



2014 LSU Softball

LSU vs. McNeese State • April 9, 2014

Tiger Park • Baton Rouge, La. • 6 p.m.

Radio: 104.5/104.9 FM

Live Stats: www.LSUsports.net

Live Updates: www.Facebook.com/LSUsoftball



SETTING THE SCENE

- ▶ LSU continues its home stand, hosting the McNeese State Cowgirls at 6 p.m. at Tiger Park in Baton Rouge.
- ▶ The Tigers won their first series of the season in taking two games from then-No. 2 ranked Tennessee last weekend. The series opening win snapped a seven-game losing streak to the Lady Vols and was the first series win over UT since the 2007 season.
- ▶ LSU is 3-0 against Louisiana teams this season, defeating ULM 14-1 last week in Monroe in a rescheduled contest.
- ▶ McNeese State is the first and only state school to make its way to Baton Rouge this season.
- ▶ LSU is 25-2 all-time against McNeese State, defeating the Cowgirls 7-1 in Lake Charles last season.

SPORTS INFORMATION

Associate AD/SID	Michael Bonnette
Senior Associate SIDs	Bill Franques, Kent Lowe
Associate SID (Softball)	Clyde Verdin
Verdin's Email	cverdin@lsu.edu
Verdin's Office Phone	(225) 578-8204
Verdin's Cell Phone	(225) 726-3434
Associate SIDs	Matt Dunaway, Will Stafford, Jake Terry
Student SIDs	Brandon Berrio, Jordan Bergeron
Student SIDs	Taylor Brown, Caroline Downer
Student SIDs	Sara Ducote, Morgan Goff
Student SIDs	Cari Gold, Nik Kragthorpe
Student SIDs	Dimitri Skoumpordis, Bria Turner
Publications Director	Krystal Bennett
Graphics Design Coordinators	Hannah Brinks, Stephanie Lyles
Staff Photographer	Steve Franz
Photography Assistant	Chris Parent
Administrative Specialist	Pam LeBlanc

WHAT'S INSIDE

- [Intro/Schedule & Results/SEC Championship Tradition](#)
- [Quick Facts/Possible Starting Lineup/2014 Roster](#)
- [LSU Record When/Media Information/Inside Look](#)
- [Season Notes/SEC Standings/Series History](#)
- [Stats/Player Season/Career Highs](#)

WHAT'S NEXT

- After McNeese, the Tigers host Georgia for a three-game SEC series April 11-13 in Baton Rouge.
- The Bulldogs won all three meetings against the Tigers last year, including knocking LSU out of the SEC tournament just four days after the series ended between the two teams.
- Georgia has won 10 of the last 11 meetings against the Tigers dating back to the 2010 season. LSU last defeated UGA, 1-0, in 2012.

SCHEDULE/RESULTS (22-16, 4-8 SEC)

FEBRUARY [13-6]	RESULT/TIME
6 No. 10/10 Texas [CST]	L, 1-6
7 Minnesota [1]	L, 0-1
7 SIU-Edwardsville [1]	W, 14-2 [5]
8 Oklahoma State [1]	W, 1-0
8 Murray State [1]	W, 10-2 [5]
9 Central Arkansas [1]	W, 8-1
14 Northwestern [2]	W, 4-0
14 George Washington [2]	W, 14-4 [5]
15 No. 18/19 South Alabama [2]	L, 1-2
15 George Washington [2]	W, 8-4
17 Penn State [2]	W, 11-3 [5]
17 Penn State [2]	L, 5-6
20 vs. Long Beach State [3]	W, 13-0 [5]
20 vs. No. 3/2 Washington [3]	W, 6-3
21 vs. No. 6/8 Oregon [3]	L, 1-4
21 vs. Cal State Fullerton [3]	W, 8-1
22 vs. No. 13/11 Stanford [3]	W, 5-3
28 Harvard [4]	L, 0-1 [12]
28 Jackson State [4]	W, 8-0 [5]
MARCH [6-9]	TIME
1 Iowa State [4]	W, 1-0
1 Lamar [4]	W, 10-0 [5]
4 at Northwestern State	W, 5-3
7 at Auburn [SEC]	W, 4-1
8 at Auburn [SEC]	L, 4-6
9 at Auburn [SEC]	L, 0-7
14 No. 1/1 Florida [SEC]	L, 6-7 [8]
15 No. 1/1 Florida [SEC, CST]	W, 3-2
16 No. 1/1 Florida [SEC, CST]	L, 2-10 [5]
19 at Nicholls	W, 9-0 [5]
22 at No. 22/16 Oklahoma	L, 1-2
23 at No. 22/16 Oklahoma	L, 2-3
28 at No. 7/5 Alabama [SEC]	L, 1-9 [6]
29 at No. 7/5 Alabama [SEC]	L, 1-2
30 at No. 7/5 Alabama [SEC, FSN]	L, 1-5
APRIL [4-1]	TIME

1 at Louisiana-Monroe	W, 14-1 [5]
4 No. 2/2 Tennessee [SEC]	W, 7-4
5 No. 2/2 Tennessee [SEC]	W, 8-4
6 No. 2/2 Tennessee [SEC]	L, 0-9 [6]
9 McNeese State	6 p.m.
11 No. 13/17 Georgia [SEC]	6 p.m.
12 No. 13/17 Georgia [SEC, CSS/CST]	6 p.m.
13 No. 13/17 Georgia [SEC]	1 p.m.
15 at Fordham	4 p.m.
16 at Hofstra	3 p.m.
16 at Hofstra	5:30 p.m.
18 at South Carolina [SEC]	6 p.m.
19 at South Carolina [SEC, ESPNU]	3 p.m.
20 at South Carolina [SEC]	12 p.m.
23 No. 19/19 South Alabama [CST]	6 p.m.
25 at Ole Miss [SEC]	6 p.m.
26 at Ole Miss [SEC]	2 p.m.
27 at Ole Miss [SEC]	1 p.m.
30 at Southeastern Louisiana	6 p.m.
MAY/JUNE [0-0]	TIME
2 Mississippi State [SEC]	6 p.m.
3 Mississippi State [SEC, CST]	7 p.m.
4 Mississippi State [SEC]	1 p.m.
7-10 SEC Tournament	TBA
15-18 NCAA Regionals	TBA
22-25 NCAA Super Regionals	TBA
29-J4 Women's College World Series	TBA

All game times are Central and subject to change; Rankings reflect NFCA and USA Softball Top 25 polls on day of game; Home games are bolded and played at Tiger Park; [SEC] Southeastern Conference game; [1] Tiger Classic [Tiger Park]; [2] Tiger Invitational [Tiger Park]; [3] Mary Nutter Collegiate Classic [Palm Springs, Calif.]; [4] Purple & Gold Challenge [Tiger Park]; [5] SEC Tournament [Columbia, S.C.]; [FSN] Fox Sports Network; [CSS] Charter/Comcast Sports Southeast; [CST] Cox Sports Television; [ESPN, ESPN2, ESPNU, ESPN3.com] SEC on ESPN Family of Networks.

LSU'S SEC CHAMPIONSHIP TRADITION

YEAR	EAST	WEST	OVERALL	TOURNAMENT
1997	South Carolina	LSU	South Carolina	South Carolina
1998	Florida	LSU	Florida	Alabama
1999	Tenn, USC	LSU	LSU	LSU
2000	Kentucky	LSU	LSU	South Carolina
2001	South Carolina	LSU	LSU	LSU
2002	South Carolina	LSU	LSU	LSU
2003	Georgia	Alabama	Georgia	Alabama
2004	Tennessee	LSU	LSU	LSU
2005	Georgia	Alabama	Georgia	Alabama
2006	Georgia	Alabama	Alabama	Tennessee
2007	Tennessee	LSU	Tennessee	LSU
2008	Florida	Alabama	Florida	Florida
2009	Florida	Alabama	Florida	Florida
2010	Florida	Alabama	Alabama	Alabama
2011	Florida	Alabama	Alabama	Tennessee
2012	Tennessee	Alabama	Alabama	Alabama
2013	Florida	LSU	Florida	Florida

CHAMPIONSHIPS	DIVISION	OVERALL	TOURNAMENT
LSU	9	5	5
Alabama	8	4	5
Florida	6	4	3
South Carolina	4	1	2
Tennessee	4	1	2
Georgia	3	2	0
Kentucky	1	0	0

QUICK FACTS

UNIVERSITY	
Location	Baton Rouge, La.
Founded	1860
Enrollment	29,549
Nickname	Tigers or Fighting Tigers
Colors	Purple and Gold
Mascot	Mike VI [live Bengal tiger]
Conference	Southeastern
Website	www.LSUports.net
President & Chancellor	Dr. F. King Alexander
NCAA Faculty Representative	Bill Demastes

ATHLETICS DEPARTMENT

Vice Chancellor/Director of Athletics	Joe Alleva
Sr. Associate AD/Operations	Verge Ausberry
Sr. Associate AD/Student Services & SWA	Miriam Segar
Sr. Associate AD/Compliance & Planning	Bo Bahnsen
Sr. Associate AD/SID	Michael Bonnette
Sr. Associate AD/Business	Mark Ewing
Sr. Associate AD/Facilities & Grounds	Ronnie Haliburton
Sr. Associate AD/Internal Affairs & Development	Eddie Nunez
Associate AD/Ticket Manager	Brian Broussard
Assistant AD/Marketing	Matt Shanklin

COACHING STAFF

Head Coach	Beth Torina
Record at LSU [Seasons]	104-57 [3]
Career Record [Seasons]	233-168 [7]
Assistant Coach	Howard Dobson
Year at LSU	3rd Season
Assistant Coach	Lindsay Leftwich
Year at LSU	3rd Season
Director of Operations	Quinlan Duhon
Year at LSU	5th Season

TEAM INFORMATION

2013 Overall Record [SEC Record]	42-16 [15-8 SEC]
2013 SEC Overall Finish [Division Finish]	T-3rd [1st - West]
2013 SEC Tournament Finish	Quarterfinals [Georgia]
2013 Postseason	NCAA Regionals [ULL]
2013 Final Ranking [NFCA/USA Softball]	18/16
Letterwinners Returning/Lost	14/5
Starters Returning/Lost	7/2
Pitchers Returning/Lost	1/2
Newcomers	6

FACILITY INFORMATION

Name [Capacity]	Tiger Park [2,489]
Dimensions [L-R]	200-210-220-210-200
Press Box Number	[225] 578-0154

PROGRAM HISTORY

All-Time Record [Percentage]	847-279-1 [.757]
NCAA Tournament Appearances	15
Years	1998-2004, 2006-2013
NCAA Tournament Record	46-31 [.597]
Women's College World Series Appearances	3
Years	2001, 2004 & 2012

SEC HISTORY

All-Time SEC Record [Percentage]	348-141-1 [.721]
SEC Western Division Titles	9
Years	1997-2002, 2004, 2007, 2013
SEC Regular Season Titles	5
Years	1999, 2000, 2001, 2002, 2004
All-Time SEC Tournament Record	36-17 [.679]
SEC Tournament Titles	5
Years	1999, 2001, 2002, 2004, 2007

POSSIBLE STARTING LINEUP • DEPTH CHART

POS	NAME	HT	CL.	GP-GS	H-AB	AVG	OB%	SLG%	R	BB	2B	3B	HR	RBI	TB	SF-SH	SB-ATT
C/DP	Kellsy Kloss	5-8	So.	36-34	26-94	.277	.370	.533	21	13	5	0	7	17	52	0-0	3-3
1B	Sandra Simmons	5-6	So.	38-38	31-103	.301	.409	.477	26	20	4	1	3	24	46	3-2	4-4
2B/DP	Allison Falcon	5-3	Sr.	38-37	35-100	.350	.400	.640	20	8	3	4	6	23	64	1-0	5-5
2B	Constance Quinn	5-5	Fr.	18-6	9-24	.375	.444	.583	7	2	2	0	1	7	14	0-3	1-1
SS	Bianka Bell	5-5	So.	38-38	35-105	.333	.457	.629	26	19	8	1	7	26	66	0-2	5-7
3B	Tammy Wray	5-7	Sr.	36-31	8-49	.163	.255	.265	3	6	2	0	1	5	13	0-2	0-0
3B	Hailey Smith	5-4	So.	9-6	4-14	.286	.565	.286	2	8	0	0	0	1	4	0-0	1-1
LF	Jacee Blades	5-7	Sr.	38-37	35-107	.327	.385	.346	19	7	0	1	0	10	37	0-7	9-12
CF	A.J. Andrews	5-4	Jr.	38-38	47-123	.382	.458	.496	26	17	5	3	1	16	61	1-2	24-25
RF	Bailey Landry	5-8	Fr.	31-28	24-73	.329	.398	.356	10	9	2	0	0	7	26	1-1	7-8
RF	Simone Heyward	5-1	Sr.	28-11	8-33	.242	.324	.303	7	4	0	1	0	3	10	0-0	7-8
DP/C	Sahvanna Jaquish	5-8	Fr.	38-38	30-110	.273	.341	.545	19	10	3	0	9	31	60	1-1	1-1
DP	Baylee Corbello	5-5	Fr.	13-13	5-27	.185	.324	.222	3	6	1	0	0	1	6	1-0	0-0
OF	Alex Boulet	5-0	Sr.	18-0	1-6	.167	.286	.167	3	0	0	0	0	1	1	0-0	4-4
OF	Alayna Falcon	5-3	So.	6-0	2-4	.500	.667	.500	1	2	0	0	0	0	2	0-0	0-0
OF	Layna Savoie	5-7	Fr.	8-0	0-2	.000	.250	.000	1	0	0	0	0	0	0	0-0	2-2
UTL	Kailey McCasland	5-5	Jr.	7-0	2-6	.333	.429	.833	2	1	0	0	1	6	5	0-0	0-0
UTL	Dylan Supak	5-11	Jr.	4-0	0-4	.000	.200	.000	1	0	0	0	0	0	0	0-0	0-0

IN THE CIRCLE

POS	NAME	HT	CL.	APP-GS	W-L	ERA	CG	SHO	SV	IP	H	R	ER	BB	SO	WP-HP	OPBA
P	Baylee Corbello	5-5	Fr.	20-17	11-5	2.51	12	5/0	0	108.2	74	45	39	84	117	9-11	.190
P	Kelsee Selman	5-8	Fr.	13-6	4-2	2.45	3	2/0	0	40.0	17	14	14	31	51	5-6	.122
P	Ashley Czechner	5-10	Sr.	20-15	7-9	3.33	10	0/0	1	96.2	106	59	46	49	56	1-13	.280
P	Bianka Bell	5-5	So.	-	-	-	-	-	-	-	-	-	-	-	-	-	-

2014 ROSTER

NO.	NAME	POS	HT.	B-T	CL.-EXP	HOMETOWN [PREVIOUS SCHOOL]
1	Layna Savoie	OF	5-7	R-R	Fr.-HS	Lake Charles, La. [Barbe HS]
2	Sahvanna Jaquish	C/INF	5-8	R-R	Fr.-HS	Highland, Calif. [Redlands East Valley HS]
3	Sandra Simmons	INF	5-6	L-L	So.-1L	Fountain Valley, Calif. [Marina HS]
5	Constance Quinn	INF	5-5	R-R	Fr.-HS	Hattiesburg, Miss. [Oak Grove HS]
6	A.J. Andrews	OF	5-5	L-R	Jr.-2L	Oldsmar, Fla. [Countryside HS]
9	Alex Boulet	OF	5-0	L-L	Sr.-3L	Crowley, La. [Notre Dame HS]
11	Dylan Supak	UTL	5-11	R-R	Jr.-2L	LaGrange, Texas [LaGrange HS]
16	Kelsee Selman	P	5-8	R-R	Fr.-HS	Lufkin, Texas [Hudson HS]
18	Tammy Wray	INF	5-7	R-R	Sr.-3L	Somers, N.Y. [Somers HS]
19	Baylee Corbello	P/UTL	5-5	R-R	Fr.-HS	Lake Charles, La. [Sam Houston HS]
21	Hailey Smith	INF	5-5	R-R	So.-1L	Bristow, Va. [Stonewall Jackson HS]
23	Jacee Blades	OF	5-7	L-R	Sr.-3L	Baton Rouge, La. [Parkview Baptist School]
24	Alayna Falcon	OF	5-3	R-R	So.-1L	Donaldsonville, La. [Ascension Catholic HS]
25	Simone Heyward	OF	5-1	L-R	Sr.-3L	Sacramento, California [Rosemont HS]
26	Bailey Landry	OF	5-8	L-R	Fr.-HS	Gonzales, La. [East Ascension HS]
27	Bianka Bell	INF/P	5-5	R-R	So.-1L	Tampa, Fla. [Chamberlain HS]
32	Allison Falcon	INF	5-3	R-R	R-Sr.-3L	Donaldsonville, La. [Ascension Catholic HS]
33	Kailey McCasland	UTL	5-5	R-R	Jr.-2L	San Clemente, Calif. [San Clemente HS]
77	Kellsy Kloss	C	5-8	R-R	So.-1L	Cypress, Calif. [Pacifica HS]
99	Ashley Czechner	P	5-10	R-R	Sr.-1L	Pawley's Island, S.C. [Chattanooga State]

COACHING STAFF

Head Coach: Beth Torina [Florida, 2000]
Assistant Coach: Howard Dobson [McNeese State, 1997]
Assistant Coach: Lindsay Leftwich [Northwestern State, 2005]
Volunteer Coach: Sharonda McDonald [Texas A&M, 2008]
Director of Operations: Quinlan Duhon [LSU, 2008]

PRONUNCIATION GUIDE

Alex BOULET	BOO-lay	JACEE Blades	Jay-CEE
Ashley CZECHNER	check-NER	Sahvannah JAQUISH	Jay-KWISH
Rachele FICO	Rachel FEE-co	Layna SAVOIE	Sah-voy
Dylan SUPAK	SHOO-pak		

COACHING STAFF

Beth TORINA	tohr-REE-na	Quinlan DUHON	do-YAWN
-------------	-------------	---------------	---------

LSU'S RECORD WHEN ...

WIN-LOSS SUMMARY	2014	OVERALL
Overall	22-16	847-279-1
Non-Conference	18-8	417-90
SEC	4-8	348-141-1
SEC Tournament	0-0	36-17
NCAA Tournament	0-0	46-31
Home	14-8	473-90-1
Away	4-7	224-117
Neutral	4-1	150-72
vs. Top 10	4-8	65-100
vs. Top 25	2-6	164-179
Louisiana Teams	3-0	151-12
<hr/>		
Day Games	15-14	600-226-1
Night Games	7-2	243-61
<hr/>		
February	13-6	223-58
March	6-9	264-78
April	3-1	246-66-1
May	0-0	113-74
<hr/>		
Sunday	1-5	164-76-1
Monday	1-1	6-1
Tuesday	2-0	55-8
Wednesday	1-0	115-17
Thursday	2-1	43-8
Friday	7-5	166-61
Saturday	8-4	298-108
<hr/>		
RHP Starter	20-12	771-248-1
LHP Starter	2-4	76-31
<hr/>		
Shutouts	7-4	383-102
Run-rule Games	9-3	197-22
Extra-inning Games	0-2	64-37
<hr/>		
One-run Games	3-8	191-97
Two-run Games	2-1	101-50
Three-run + Games	11-5	550-130
<hr/>		
Scored First	16-5	694-72-1
Opp. Scored First	6-11	154-208
Scored in 1st Inning	8-4	384-30-1
Opp. Scored in 1st Inning	3-8	112-98
<hr/>		
Scored 0-2 Runs	2-13	134-218
Scored 3-5 Runs	5-2	308-54-1
Scored 6-9 Runs	8-1	289-7
Scored 10 + Runs	7-0	118-1
<hr/>		
Opp. Scored 0-2 Runs	14-5	708-71
Opp. Scored 3-5 Runs	8-3	123-106-1
Opp. Scored 6-9 Runs	0-7	17-794
Opp. Scored 10 + Runs	0-1	1-19
<hr/>		
Out-hit Opp.	18-7	711-68-1
Out-hit by Opp.	2-7	78-186
Hits are Tied	2-2	57-27
<hr/>		
Made 0 Errors	14-5	404-72
Made 1 + Errors	8-11	443-207-1
<hr/>		
Opp. Made 0 Errors	4-11	228-147
Opp. Made 1 + Errors	18-5	621-130-1
<hr/>		
Leading after 6 Innings	10-2	552-21
Trailing after 6 Innings	2-9	25-198-1
Tied after 6 Innings	1-2	67-35

MEDIA INFORMATION

SPORTS INFORMATION

LSU Associate Sports Information Director Clyde Verdin handles the media relations duties for the Tiger softball team. Verdin can be reached at his office (225) 578-8204, on his cell (225) 726-3434 or by e-mail at cverdin@lsu.edu.

The Tiger Park press box phone number is (225) 578-0154 and will be available 90 prior to first pitch on gamedays.

PRACTICE TIMES/INTERVIEWS

LSU practices at Tiger Park and team sessions generally begin around 2 p.m. On most days, head coach Beth Torina and players are available for interviews beginning at 1:30 p.m. prior to the team practice session.

Members of the media who wish to cover practice should contact SID Clyde Verdin for the latest practice times. During the season, the Tigers generally take Monday's off.

Office and phone interviews may be arranged on special occasions. Torina's office is located on the fourth floor of the Athletic Administration Building.

All interview requests must be made at least 24 hours in advance with Verdin.

WWW.LSUSPORTS.NET

Information about the Tiger softball team, including player bios, game recaps and notes packets are available online at the Official Website of LSU Athletics, www.LSUsports.net.

LSU softball games that are broadcasted on the radio also can be heard in the Geaux Zone on LSUsports.net. Live streaming video for all home games broadcast on the radio that are not being televised by a national network as part of the SEC on ESPN package.

Live statistics for all games will be carried on LSUsports.net.

MEDIA.LSUSPORTS.NET

Media can now access images for all LSU athletics teams, including action shots, head shots and logos. To gain access to the high-resolution pictures, e-mail Clyde Verdin.

You will be assigned a user name and a password. This service is for media use only. Resale of these images is strictly prohibited.

TIGERS ON TV

LSU will make 10 television appearance during the 2014 season. Every pitch of the SEC Tournament will be carried live on ESPN and www.WatchESPN.com.

Below is a complete list of the Tigers television appearances which includes games on ESPN (cable channel 1243), Cox Sports Television (cable channel 1037), FSN (cable channel 1038) and CSS/CST (cable channel 1037).

Date	Opponent	Time	Network	Result
Feb. 6	No. 10 Texas	6 p.m.	CST	L, 1-6
March 15	No. 1 Florida	7 p.m.	CST	W, 2-3
March 16	No. 1 Florida	12 p.m.	CST	L, 2-10 [5]
March 22	at No. 22 Oklahoma	2 p.m.	FSN	L, 1-2
March 23	at No. 22 Oklahoma	12 p.m.	FSN	L, 2-3
March 30	at No. 7 Alabama	1 p.m.	FSN	L, 1-5
April 12	No. 13 Georgia	4 p.m.	CSS/CST	
April 19	at South Carolina	3 p.m.	ESPN	
April 23	No. 18 South Alabama	6 p.m.	CST	
May 3	Mississippi State	7 p.m.	CST	

TIGERS ON THE RADIO

LSU softball is in its 18th season of radio coverage, as the LSU Sports Network will broadcast 30 regular season games which includes 21 of the team's 24 SEC contests in addition to all postseason games.

The games will be broadcast in the Baton Rouge area on Country Legends 104.9 FM. In addition, the games can be heard live on the internet in the Geaux Zone at LSUsports.net.

Patrick Wright calls the play-by-play action, while Kent Lowe serves as the analyst for home games. Associate SID Matt Dunaway joins Wright for the road contests.

INSIDE LOOK • LSU VS MCNEESE STATE

LSU RECORD	22-16 [4-8 SEC]
RANKING [NFCA/USA SOFTBALL]	RV/NA
RPI	25
LAST WEEKEND	2-1 [vs. Tennessee]

HEAD COACH	Beth Torina
OVERALL RECORD	233-168
FEBRUARY	13-6
MARCH	6-9
APRIL	3-1
MAY	0-0
LAST TEN	4-6
STREAK	L-1

TEAM BATTING AVERAGE	.307
TEAM EARNED RUN AVERAGE	2.82

HITTING LEADERS

A.J. Andrews	.382, 47 H, 16 RBI, 24-25 SB-SBA
Allison Falcon	.350, 35 H, 6 HR, 4 3B, .640 SLG
Bianka Bell	.333, 7 HR, 26 RBI, .629 SLG

PITCHING LEADERS

Baylee Corbello	11-5, 2.51 ERA, 12 CG, 108.2 IP, 117 K's
Kelsea Selman	4-2, 2.45 ERA, 3 CG, 40.0 IP, 51 K's

MCNEESE STATE RECORD	27-10 [11-3 SLC]
RANKING [NFCA/USA SOFTBALL]	NA/NA
RPI	35
LAST WEEKEND	3-0 [vs Central Arkansas]

HEAD COACH	Mike Smith
OVERALL RECORD	708-209
FEBRUARY	10-7
MARCH	12-3
APRIL	5-0
MAY	0-0
LAST TEN	9-1
STREAK	W-6

TEAM BATTING AVERAGE	.278
TEAM EARNED RUN AVERAGE	1.93

HITTING LEADERS

AllanaDiVittorio	.407, 44 H, 19 RBI, 41 R, 5 HR
Lauren Langer	.385, 47 H, 17 RBI, 8 2B
Ashley Modzelewski	.325, 38 H, 11 HR, 38 RBI

PITCHING LEADERS

Rachel Smith	6-2, 1.37 ERA, 4 CG, 56.1 IP, 40 K's
Jamie Allred	16-5, 1.71 ERA, 13 CG, 139.1 IP, 136 K's

2014 STREAKS, STORYLINES AND SIDEBARS

- LSU is 22-16 overall and 4-8 in Southeastern Conference play on the season after taking two of three from the Tennessee Lady Vols over the weekend.
- The series win over Tennessee was the first for the team this season and first in SEC play. The Tigers snapped a seven-game losing streak to the Lady Vols, while earning the first series win over UT since the 2007 season.
- The 8-4 series opening win over Tennessee snapped a four-game SEC losing streak dating back to the Florida series. LSU went 3-1 last week, outscoring its opponents 29-18.
- The eight runs against the Lady Vols in game two of the series were the most scored by the Tigers in an SEC game this year.
- The combined 15 runs in the UT series are the most for LSU against a conference opponent this season.
- The Tigers are a combined 14-0 when scoring seven or more runs in a game this season. LSU has scored a combined 79 runs in the fourth and fifth inning, with 40 being the most of any inning in the fifth.
- LSU earned its sixth comeback win of the season after scoring four runs in the bottom of the seventh inning.
- In dropping the finale, the Tigers are 0-4 on Sunday's in conference play, getting outscored 31-3 in those contests.
- LSU's opponents have committed 11 errors to the Tigers' two as LSU is 11-1 when teams commit two or more in a game this year.

From The Batter's Box

- A.J. Andrews has started all 38 games out in center field and has batted in the leadoff position in every start.
- Andrews leads the team with a .382 batting average.
- Her 47 hits are a team-high.

- Andrews is 24-of-25 in stolen bases.
- Has stolen three bases in a game twice this season with four games of at least two.
- Went on a career and season-long 15 game hitting streak.
- Andrews has a team-leading 14 multi-hit games on the season, 10 nine, two-hit outings and four, three-hit outings.
- Andrews' six at bats against Harvard on Feb. 28 is an individual season high in the Southeastern Conference.
- Had her second three RBI game of the season in the opener against Tennessee, hitting her first home run of the season in a 2-for-3 night with two runs scored.
- Hit .375 in the series against Alabama with a double, RBI, run scored and two stolen bases.
- Went 3-for-6 in the series against Oklahoma with a triple, .833 slugging percentage and .625 on-base percentage.
- Drove in a season-high three RBI against Nicholls with a double.
- Averaged .333 at the plate in 12 appearances against No 1 Florida, finishing with four hits and a stolen base.
- Went 2-for-3 in the finale against the Gators with a triple, scoring both runs for the Tigers in the contest.
- Hit .538 against Auburn and Northwestern State, earning seven base knocks with a double, RBI and four runs scored with four stolen bases.
- Went 3-for-4 in the series opener against the Tigers, stealing two bases with a double, RBI and run scored.
- Hit .500 at the Mary Nutter Andrews hit .500 at the Mary Nutter Collegiate Classic with eight hits, which included a double and a triple, with four RBI.
- The four runs driven in were third on the team at the classic. She combined for five hits in nine plate appearances against Cal State

SERIES HISTORY - MCNEESE STATE

AT A GLANCE [MCNEESE STATE]

Overall	LSU leads 25-2
Home	LSU leads 17-1
Away	LSU leads 7-1
Streak	W-7

GAME-BY-GAME

Date	Result	Location
03/12/97	W, 8-1	Baton Rouge
03/12/97	W, 2-0	Baton Rouge
02/14/98	W, 7-4	Baton Rouge
02/13/99	W, 7-0	Baton Rouge
02/14/99	W, 4-1	Baton Rouge
03/24/99	W, 4-3	Baton Rouge
03/24/99	W, 6-1	Baton Rouge
02/12/00	W, 3-0	Baton Rouge
02/13/00	W, 5-0	Baton Rouge
02/14/01	W, 3-1	Lake Charles
02/14/01	W, 4-0	Lake Charles
02/22/05	W, 11-1	Baton Rouge
03/15/06	W, 3-1	Lake Charles
04/12/06	W, 1-0	Baton Rouge
03/07/07	W, 7-1	Baton Rouge
03/28/07	W, 6-0	Lake Charles
02/11/09	W, 6-0	Baton Rouge
04/22/09	L, 4-3	Lake Charles
03/31/10	W, 7-2	Lake Charles
04/21/10	L, 3-0	Baton Rouge
05/21/10	W, 6-0	Baton Rouge
02/23/11	W, 7-1	Baton Rouge
04/13/11	W, 4-2	Lake Charles
02/25/12	W, 2-0	Baton Rouge
03/28/12	W, 4-0	Lake Charles
04/17/12	W, 2-1	Baton Rouge

04/17/13 W, 7-1 Lake Charles

SEC STANDINGS

TEAM	SEC	PCT.	OVERALL	PCT.
Alabama	14 - 1	.993	35 - 5	.875
Tennessee	9 - 3	.750	32 - 5	.864
Georgia	8 - 4	.667	33 - 6	.846
Kentucky	7 - 5	.583	31 - 8	.794
Florida	8 - 7	.533	34 - 8	.809
Texas A&M	8 - 7	.533	27 - 12	.717
Auburn	6 - 6	.500	31 - 9	.768
Missouri	6 - 6	.500	28 - 9	.756
South Carolina	6 - 9	.400	25 - 14	.641
LSU	4 - 8	.333	22 - 16	.578
Mississippi St.	3 - 9	.250	30 - 12	.714
Ole Miss	3 - 9	.250	20 - 19	.512
Arkansas	2 - 10	.167	24 - 17	.585

THIS WEEK IN SEC SOFTBALL - ALL TIMES ARE CENTRAL

Monday, April 7

Ole Miss at Southeastern La.	L 2-3
Ole Miss at Southeastern La.	W 9-0

Tuesday, April 8

Campbell at South Carolina	4:00 PM
Tennessee Tech at Tennessee	4:00 PM

Wednesday, April 9

W. Illinois at Missouri	2:00 PM
Miss. Valley St. at Kentucky	4:00 PM
W. Illinois at Missouri	4:00 PM
Florida at Florida St.	5:00 PM
USC Upstate at Georgia	5:00 PM
UAB at Alabama	6:00 PM
Mississippi St. at South Alabama	6:00 PM
McNeese State at LSU	6:00 PM
Tulsa at Arkansas	6:00 PM

Friday, April 11

Alabama at Mississippi St.	5:00 PM
Florida at Florida A&M	5:00 PM
Missouri at Auburn	6:00 PM
Georgia at LSU	6:00 PM
Kentucky at Ole Miss	6:00 PM
South Carolina at Arkansas	6:00 PM
Tennessee at Texas A&M	7:00 PM

Saturday, April 12

Missouri at Auburn	12:00 PM
Alabama at Mississippi St.	12:00 PM
Florida at North Carolina St.	12:00 PM
South Carolina at Arkansas	1:00 PM
Kentucky at Ole Miss	2:00 PM
Tennessee at Texas A&M	4:00 PM
Georgia at LSU	6:00 PM

Sunday, April 13

Tennessee at Texas A&M	12:00 PM
Missouri at Auburn	1:00 PM
Alabama at Mississippi St.	1:00 PM
Georgia at LSU	1:00 PM
Kentucky at Ole Miss	1:00 PM
South Carolina at Arkansas	1:00 PM

USA TODAY/NFCA TOP 25 • APRIL 8

RANK	TEAM	RECORD	PTS	PVS
1	Oregon (30)	34-5	798	3
2	UCLA (2)	34-4	756	1
3	Alabama	35-5	735	4
4	Tennessee	32-5	684	2
5	Michigan	29-6	675	5
6	Florida	34-8	621	6
7	Arizona State	35-6	616	7
8	Florida State	38-4	606	8
9	Arizona	32-8	528	10
10	Washington	22-10	509	9
11	Kentucky	31-8	470	12
12	Baylor	28-6	436	13
13	Georgia	33-6	381	15
14	Minnesota	28-5	367	14
15	South Alabama	30-6	357	11
16	Missouri	27-10	323	16
17	Tulsa	35-4	306	17
18	Louisiana Lafayette	28-6-1	211	21
19	Oklahoma	28-8	206	22
20	Auburn	31-9-1	197	19
21	Texas A&M	27-12	188	18
22	Nebraska	26-12	183	20
23	Northwestern	22-9	77	23
24	USC Upstate	36-4	45	RV
25	Notre Dame	22-8	34	25

Dropped Out: No. 24 Stanford (24-14)

RV: : Stanford (19), James Madison (16), Houston (15), DePaul (12), LSU (12), Long Beach State (8), N.C. State (6), Hofstra (1), Louisville (1), USF (1).

Bold - 2014 Opponent; [RV] Receiving Votes

ESPN.COM/USA SOFTBALL TOP 25 • APRIL 8

RANK	TEAM	RECORD	PTS	PVS
1.	Oregon (18)	34-5	497	3
2.	Alabama (1)	35-5	471	4
3.	UCLA	34-4	452	1
4.	Michigan	29-6	428	5
5.	Tennessee	32-5	418	2
6.	Arizona State	35-6	407	6
7.	Florida State (1)	38-4	396	8
8.	Florida	34-8	358	7
9.	Arizona	32-8	334	10
10.	Washington	22-10	314	9
11.	Kentucky	31-8	279	12
12.	Baylor	28-6	276	13
13.	Oklahoma	28-8	247	15
14.	Minnesota	28-5	224	14
15.	Tulsa	35-4	198	16
16.	South Alabama	30-6	197	11
17.	Georgia	33-6	191	17
18.	Missouri	27-10	170	18
19.	Nebraska	26-12	133	20
20.	Louisiana-Lafayette	28-6-1	123	22
21.	Auburn	31-9-1	121	19
22.	Texas A&M	27-12	86	21
23.	Notre Dame	22-8	47	23
24.	USC Upstate	36-4	34	RV
25.	Northwestern	22-9	24	RV

Dropped Out: Stanford (24), South Florida (25)

RV: LSU (16), Stanford (13), North Carolina State (12), Houston (10), Texas State (5), San Diego State (4), California (4), South Florida (3), Stetson (2), Lipscomb (2), Louisville (2), James Madison (2)

Bold - 2014 Opponent; [RV] Receiving Votes

Fullerton.

- Bianca Bell is third on the team with a .333 batting average, starting all 38 games at shortstop or designated player for the Tigers.
- Bell leads the team with eight doubles and is tied for second on the team with seven home runs.
- Of Bell's 35 hits, 14 have been for extra bases.
- Has nine multi-hit games on the season with seven, two-hit contests and two, three-hit contests.
- Bell has five games this year with two RBI and two games with three.
- Bell is slugging .629 at the plate.
- Her 66 total bases so far this year lead the team.
- Bell has been walked a 19 times.
- Bell has stolen five of seven bases this season.
- Bell hit four home runs in a span of six games from Feb. 15-21.
- Reached base in 17 consecutive games from Feb. 9-March 4 which is the longest on the team this season.
- Went on an eight-game hitting streak which was a career long and third longest on the team this season.
- Hit a walk-off three-run home run to seal the 7-4 comeback win over Tennessee in the bottom of the seventh and went 2-for-4 with three RBI and a run scored.
- Hit her eighth double of the season against Alabama, driving in her 22nd RBI of the season in game three against the Crimson Tide.
- Bell hit .500 against the Oklahoma Sooners with three hits and a walk.
- Went 1-for-3 with a run scored against Nicholls.
- Had two RBI and earned three hits against Florida, which included her team-leading seventh double of the season.
- Was 4-for-6 in the final two games against Auburn, going 2-for-3 in game two with two RBI and a run scored on a double and solo home run.
- Went 3-for-3 against Lamar with a double, triple, RBI and two runs scored.
- Earned three hits in three at-bats against Jackson State with two doubles and three runs scored.
- Went 2-for-2 against Long Beach State at the Mary Nutter Collegiate Classic and scored three times.
- Needed just two at-bats against Penn State to drive in three runs and score twice with a home run.
- Had two hits against Central Arkansas, driving in two and scoring twice with a home run and a walk.
- Allison Falcon is hitting .350 on the season which is second on the team with 35 hits and 23 RBI
- Falcon has played in all 38 games, earning 37 starts with 33 coming at second base.
- Falcon has four triples on the year which leads the Southeastern Conference.

- She accounts for a little under half of the team's 11 triples this year.
- Falcon has 12 multi-hit games, with 11 two-hit games and one three-hit contest.
- Her six home runs are tied for third on the team.
- Falcon leads the team with a .640 slugging percentage.
- Is one of just five players this season to have four RBI in a game, with five multi-RBI games to her credit this year.
- Has hit six long balls this season, including hitting the first grand slam of the year for the team.
- Has struck out just eight times this season.
- Is one of three players this year in the SEC with two triples in a single game.
- Became the first LSU player since 2011 to be named SEC Player of the Week, while also being named LSWA Player of the Week on April 7-8.
- Hit .750 over a stretch of four games, including a .800 on-base percentage and 1.125 slugging percentage against ULM and Tennessee
- Helped clinch the series with a 2-for-2 day at the plate with three RBI and a run scored in game two against the Lady Vols.
- Went 2-for-3 with a home run, RBI and two runs scored against ULM
- Had two hits in seven at-bats against the Sooners.
- Went 2-for-2 with an RBI and run scored against Nicholls.
- Hit .500 for the team in the series against UF, being two of four players to earn four hits on the weekend.
- Went 4-for-8 with two RBI and two runs scored against Florida.
- Had three doubles and a home run to her credit, finishing with a slugging percentage of 1.250.
- In game two alone, Falcon had two, two-baggers and hit the solo home run that gave LSU a 3-0 lead which the team held on to for the win.
- Tripled against Auburn in the series opener, scoring once in the 4-1 win over the Tigers.
- Went 2-for-3 against Stanford, with two RBI and a run scored as her home run began the comeback for LSU against the Cardinal.
- Was 2-for-3 against Cal State Fullerton, earning a triple in the win over the Titans.
- Only hit against Washington was a solo home run in the win over the Huskies
- Went 2-for-4 against Penn State in the second game of a doubleheader with a run scored.
- Became the first player since 2004 to hit two triples in a single game in game one against Penn State, going 2-for-2 with three RBI and a run scored.
- Helped close out the game against George Washington with the team's first grand slam home run and second in consecutive games on a 2-for-2 night with two runs scored.
- Had two hits in three at-bats against Northwestern with a home

TIGERS IN THE POLLS

USA TODAY/NFCA TOP 25

Preseason	No. 17 [269]
Feb. 11	No. 21 [179]
Feb. 18	No. 23 [118]
Feb. 25	No. 22 [146]
March 4	No. 24 [77]
March 11	RV [25]
March 18	RV [22]
March 25	RV [2]
April 1	RV [1]
April 8	RV [12]
April 15	
April 22	
April 29	
May 6	
May 13	
Final	

ESPN.COM/USA SOFTBALL

Preseason	No. 19 [150]
Feb. 11	No. 21 [102]
Feb. 18	No. 23 [69]
Feb. 25	No. 21 [103]
March 4	No. 23 [67]
March 11	No. 25 [27]
March 18	RV [20]
March 25	RV [8]
April 1	NA
April 8	RV [16]
April 15	
April 22	
April 29	
May 6	
May 13	
Final	

LSU MULTI-HIT GAMES

PLAYER	2	3	4+	SEASON	CAREER
A.J. Andrews	10	4	-	14	40
Jacee Blades	5	3	1	9	34
Allison Falcon	11	1	-	12	31
Bianka Bell	7	2	-	9	26
Simone Heyward	1	-	-	1	22
Sandra Simmons	9	-	-	9	19
Tammy Wray	2	-	-	2	16
Kellsie Kloss	7	1	-	8	12
Bailey Landry	6	-	-	6	6
Sahvanna Jaquish	6	1	-	7	7
Dylan Supak	-	-	-	0	5
Kailey McCasland	-	-	-	0	3
Alex Boulet	-	-	-	0	1
Hailey Smith	-	-	-	-	1

LSU MULTI-RBI GAMES

PLAYER	2	3	4+	SEASON	CAREER
Bianka Bell	5	2	-	7	20
Allison Falcon	3	2	1	6	20
A.J. Andrews	4	2	-	5	16
Tammy Wray	1	-	-	1	14
Sandra Simmons	3	-	2	5	13
Kellsie Kloss	2	1	1	4	10
Sahvanna Jaquish	1	5	1	7	7
Jacee Blades	2	-	-	2	6
Dylan Supak	-	-	-	0	6
Bailey Landry	2	-	-	2	2
Constance Quinn	2	-	-	2	2
Simone Heyward	-	1	-	1	2
Kailey McCasland	-	-	1	1	2

LSU HITTING STREAKS

PLAYER	SEASON	CURRENT	CAREER
A.J. Andrews	15	1	15
Jacee Blades	9	-	9
Bianka Bell	8	-	8
Allison Falcon	5	4	8
Sandra Simmons	4	-	7
Kellsie Kloss	6	-	6
Bailey Landry	6	1	6
Tammy Wray	2	-	6
Sahvanna Jaquish	5	-	5
Simone Heyward	5	-	5
Constance Quinn	4	-	4
Hailey Smith	3	-	3
Kailey McCasland	1	-	3
Baylee Corbello	2	-	2
Alayna Falcon	2	-	2
Alex Boulet	1	-	2

- run, RBI and run scored against the Wildcats.
- Was perfect in two at-bats against Murray State scoring twice and driving in one.
- Drove in two on just one hit against SIUE.
- Bailey Landry has played in 31 games, making 28 starts all in the outfield.
- Is hitting .329, with 24 hits, two for doubles, with seven RBI.
- Has stolen seven bases on eight attempts this season.
- Was on a season-best six-game hitting streak from Feb. 28-March 8.
- Has six multi-hit games on the year.
- Earned one of LSU's three hits in the finale against Tennessee.
- Went 2-for-3 against Nicholls with an RBI in the two-spot of the batting order.
- Hit .444 against top-ranked Florida, with four hits and a run scored.
- Went 2-for-3 against Northwestern State with a run scored.
- Had a 2-for-2 day against Penn State with two RBI and a run scored with a double.
- Went 2-for-4 with an RBI against Central Arkansas.
- Landry went 2-for-2 with two RBI and a run scored against Murray State.
- Jacee Blades has started 37 games in left field for the Tigers and has a .327 batting average.
- Blades is tied for second on the team with 35 total hits, with one triple and nine RBI.
- Blades has stolen nine bases on 12 total attempts this season.
- Has earned nine multi-hit games on the year, and is the only player to earn four hits in a game this season.
- Blades has seven sacrifice hits on the year which leads the team.

- At one point was hitting .448 on the season which is the highest at any point for any player on the team this year.
- Went on a nine-game hitting streak which was a career-long.
- Hit .500 over four games against ULM and Tennessee, going 5-for-10 with an RBI and three runs scored and a stolen base.
- Went 2-for-3 in game two against Tennessee with an RBI and run scored.
- Went 2-for-2 with a run scored against ULM.
- Hit .667 over the course of seven games, racking up 16 hits, three RBI and seven runs scored with two stolen bases from Feb. 17-22.
- Went 3-for-4 against Stanford with an RBI and run scored
- Accounted for all but two hits against the Oregon Ducks, going 4-for-4 which was a career-high for hits in a single game.
- Scored twice against Long Beach State with a 1-for-3 day at the plate.
- Blades was a combined 5-for-5 in two games against Penn State with a triple, RBI and three runs scored against the Nittany Lions.
- Was 3-for-4 against South Alabama with a run scored and two stolen bases. Swiped two more bags against George Washington.
- Went 1-for-4 against Murray State with two RBI and 1-for-2 with two runs driven in and two sacrifice hits against SIU Edwardsville.
- Sandra Simmons is batting .301 on the season and has 31 total hits.
- Simmons has started all 38 games at first base and has a .990 fielding percentage.
- Simmons has three doubles a triple and three home runs on the year.
- She has nine, two-hit games this year.
- Has hit below .300 just three times this season.
- Is third on the team in RBI with 24, as she is the only player this

RPI REPORT - AS OF 03/30/14

Overall Ranking	25 [22-16]
Record vs. RPI 1-25	5-13
Home	3-5
Away	1-7
Neutral	1-1
Record vs. RPI 26-50	3-1
Home	1-1
Away	0-0
Neutral	2-0
Record vs. RPI 51-100	2-0
Home	1-0
Away	0-0
Neutral	1-0
Record vs. RPI 101-150	4-1
Home	3-1
Away	1-0
Neutral	0-0
Record vs. RPI 151 +	8-1
Home	6-1
Away	2-0
Neutral	0-0

OPPONENT RPI	RANK [RECORD VS.]
SEC	
Alabama	1 [0-3]
Georgia	2 [0-0]
Florida	4 [1-2]
Missouri	8 [0-0]
Tennessee	12 [2-1]
Kentucky	15 [0-0]
Texas A&M	16 [0-0]
Auburn	21 [1-2]
LSU	25
South Carolina	31 [0-0]
Mississippi State	41 [0-0]
Arkansas	72 [0-0]
Ole Miss	79 [0-0]

NON-CONFERENCE	RANK [RECORD]
Oregon	5 [0-1]
South Alabama	17 [0-1]
Oklahoma	18 [0-2]
Minnesota	19 [0-1]
Washington	23 [1-0]
Texas	27 [0-1]
Northwestern	29 [1-0]
Long Beach State	43 [1-0]
Cal State Fullerton	47 [1-0]
Stanford	51 [1-0]
Oklahoma State	60 [1-0]
Murray State	101 [1-0]
SIU Edwardsville	102 [1-0]
Harvard	109 [0-1]
Iowa State	110 [1-0]
ULM	140 [1-0]
Penn State	154 [1-1]
Lamar	164 [1-0]
Central Arkansas	180 [1-0]
Northwestern State	188 [1-0]
George Washington	195 [2-0]
Jackson State	209 [1-0]
Nicholls	213 [1-0]

2014 COMEBACK WINS

MURRAY STATE - FEB. 8 - W, 10-2

- The Tigers picked up their first comeback win of the season, coming back from a two-run deficit to run-rule the Murray State Racers after scoring 10 unanswered runs to win in five.
- Walks to Allison Falcon and Hailey Smith put two on for LSU, with Bailey Landry loading the bases on an infield single.
- A.J. Andrews singled to score Falcon, while a RBI grounder by Jacee Blades tied the game at two in the bottom of the second.
- Kelli Kloss earned a two-out double to left center, as Falcon followed suit to score Kloss and give LSU its first lead up 3-2.
- The Tigers scored six runs on six hits in the fourth for a total of nine runs in three innings, as the game ended with a Constance Quinn double and Landry hit to ice the contest

CAL STATE FULLERTON - FEB. 21 - W, 8-1

- LSU picked up another comeback win of the season, exploding for eight runs in the fifth inning to defeat the Cal State Fullerton Titans 8-1 at the Mary Nutter Collegiate Classic.
- The Tigers had just two players reach base through four innings and a single hit, LSU earned ten hits in the next two innings against two Fullerton pitchers.
- LSU went through the entire lineup in the fifth, as the team got a two-RBI triple from A.J. Andrews to give the team its first lead, while Bianka Bell earned a two-RBI double to extend it.
- The inning was capped by a three-run home run by Savannah Jaquish to make it 8-1 as LSU earned eight runs on eight hits in the fifth alone.

STANFORD - FEB. 22 - W, 5-3

- LSU picked up its second comeback win of the weekend, scoring four unanswered runs in the sixth and seventh to defeat No. 13 Stanford to close the Mary Nutter Collegiate Classic.
- Trailing 3-1, Allison Falcon hit her fourth home run of the season, a solo shot, to make it 3-2 in the top of the sixth.
- Simone Heyward led off with a single through the left side and was followed by a bunt single by A.J. Andrews with Heyward advancing to third to put runners at the corners.
- Jacee Blades hit an infield single as Heyward slid under the tag to tie the game.
- Consecutive walks to Sandra Simmons and Bianka Bell scored another to make it 4-3, while Savannah Jaquish got hit to make it 5-3.

NORTHWESTERN STATE - MARCH 4 - W, 5-3

- After giving up three runs in the first two innings, the LSU Tigers scored five runs in final three innings to defeat the Lady Demons in Natchitoches.
- Bailey Landry singled to open the Tiger fifth, with an error and walk putting A.J. Andrews and Jacee Blades on to load the bases. A grounder by Sandra Simmons and fielder's choice by Bianka Bell plated two runs as LSU tied the game.
- In the next at bat, Kelli Kloss took an 0-2 pitch over the fence in left to put LSU up 4-3 for the team's first lead of the day.
- Kloss came back in the seventh inning and gave LSU an insurance run by driving in Andrews who reached earlier with a single to make it 5-3.

AUBURN - MARCH 7 - W, 4-1

- A.J. Andrews earned three of LSU's five hits on the day as the Tigers opened SEC play with a 4-1 comeback win over Auburn to start the series.
- Andrews drove in the game-tying run and scored the go-ahead run in the sixth inning to give LSU a lead it would not relinquish.
- Bailey Landry doubled to left and Andrews continued with a shot of her own to tie the game at 1-1.
- After moving to third on a sacrifice bunt by Jacee Blades, a fielder's choice by Sandra Simmons allowed Andrews to get in under the tag and give LSU the lead up 2-1.
- Simmons moved to second on a grounder, as Kelli Kloss forced an error at short to allow Simmons to score making it 3-1.
- The final run came by virtue of a sacrifice fly by Corbello, driving in Allison Falcon who tripled.

TENNESSEE - APRIL 4 - W, 7-4

- Bianka Bell hit a walk-off three-run home run to cap a four-run inning for LSU as the Tigers knocked off No. 2 Tennessee in the series opener between the two teams.
- Bell went 2-for-3 with three RBI and a run scored, hitting her seventh home run of the season in the final inning to earn the win for LSU.
- A.J. Andrews went 2-for-3 with three RBI and two runs scored, hitting her first home run of the season in the game.
- After scoring two unearned runs in the second, Allison Falcon and Simone Heyward earned infield singles with Andrews sending one over the fence to give LSU a 3-2 lead.
- Tennessee scored two more unearned runs in the fourth, and down to their final three outs, Andrews singled down the line and moved to second on a walk to Jacee Blades.
- Savannah Jaquish singled to left scoring Andrews to make it 4-4.
- Bell took the second pitch of her at-bat against Ellen Renfroe and sent it to the Berm giving LSU the win and Renfroe her first loss of the season.

- season with two games of four RBI.
- Simmons is 3-for-3 in stolen bases.
- Earned two hits for the third straight game going 2-for-2 with a double, RBI and season-high three runs scored against ULM.
- Hit .400 and was one of two players to earn four hits against Alabama on the weekend.
- Had back-to-back two-hit games against Alabama, accounting for half of LSU's hits in the finale.
- Was walked a season high three times against Nicholls, earning six on the week when including the Oklahoma series.
- Went 2-for-3 in the finale against Auburn.
- Went 2-for-2 with two runs scored and drove in four RBI for the second time with a three-run home run.
- Had a 2-for-3 day against Iowa State, driving in the game-winning run on her final hit of the game.
- Went 1-for-4 against Washington with two RBI.
- Did not garner a hit against Penn State but had two RBI with two sacrifice flies
- Had a 2-for-3 day against George Washington with two RBI and two runs scored with a home run.
- Came in twice and drove in one on two hits against Central Arkansas
- Solo home run proved to be the difference in the Oklahoma State game as LSU defeated the Cowgirls 1-0.
- Drove in four for the first time this season, using just one hit, a double, to help defeat SIUE.
- Hit LSU's first triple of the season against Texas in the opener.
- Kelli Kloss is hitting .277 in 36 games this year.
- Kloss has started all but four games either as the catcher or designated player.
- Kloss has 26 hits on the season with five doubles and is second on the team in home runs with seven.
- She is slugging .553 on the season.
- Kloss is one of four players to drive in four runs in a game this season.
- Kloss has eight multi-hit outings.
- Averaged a team-high .444 against Alabama, earning four hits with an RBI and run scored with a .444 on-base percentage and slugging .778.
- Kloss has hit two of the last five LSU home runs.
- Hit seventh home run of the season in the series opener against the Crimson Tide.
- Hit her sixth home run of the season on a back-to-back in the series opener against Florida.
- Hit the go-ahead two-run home run in the 5-3 comeback win over Northwestern State, going 2-for-3 with three RBI.
- Went 2-for-2 with two RBI and two runs scored in the shutout win over Jackson State.
- Had a monster day going 2-for-4 against Long Beach State where she had four RBI with two runs scored on a double and home run.
- Was 2-for-4 in the finale against Penn State, with a double and an RBI.
- Opened the Penn State doubleheader with a 3-for-3 outing with an RBI and three runs scored with a home run.
- Had two hits against South Alabama.
- Hit a two-run bomb against Northwestern with a run scored.
- Went 2-for-4 against Murray State with a double, RBI and two runs scored against the Racers.
- Savannah Jaquish has started all 38 games for the Tigers in her freshman season.
- Jaquish leads the team with nine home runs on the season.
- She leads the team with 31 RBI, and has seven multi-RBI games with one four-RBI contest and five three-RBI games.
- Jaquish is hitting .273 on the season and also has three doubles.
- Behind the plate, Jaquish sports a .983 fielding percentage.
- Jaquish has only struck out 10 times, which is the second-lowest amount for the everyday starters.
- Had the game-tying RBI single in the series opener against Tennessee
- Went on a five-game hitting streak from Feb 7-14.
- Jaquish has hit four of the last ten home runs for LSU.

- Jaquish has hit five of her nine home runs as the leadoff batter in an inning.
- Also went 4-for-8 and hit two home runs in a game for the second time in her last three in the series opener against the Gators.
- Became the first player since Tammy Wray last season to hit two home runs in a single game with two solo home runs in game two against Auburn where she went 3-for-4 with two RBI and two runs scored.
- Hit the second grand slam of the season against Lamar which accounted for her only hit of the game.
- Hit a three-run bomb in a rout of Jackson State in her only hit of the contest.
- Went 2-for-3 against Harvard.
- Had a 2-for-3 game against Cal State Fullerton, driving in three runs with a run scored and a home run versus the Titans.
- Was 1-for-3 against Long Beach State, driving in three RBI against the 49ers.
- Hit the second of her two doubles during the Tiger Invitational weekend going 1-for-4 against Penn State with an RBI and run scored.
- Hit her first double of the season in a 2-for-3 outing against George Washington.
- Scored her first home run of the season against Central Arkansas for her only hit of the game against the Bears.
- Went 2-for-2 with three RBI against SIU Edwardsville.
- Tammy Wray has played in 36 games with 31 starts all coming at third base.
- Wray has a .966 fielding percentage at third this season.
- Had two hits in a game for the second time this season going 2-for-2 with a double and season-high two RBI against ULM and a run scored.
- Went 1-for-4 with an RBI, as she played solid defense all weekend with five putouts and seven assists against Florida.
- Went 1-for-3 against Lamar in the final game of the Purple and Gold Challenge
- Best game at the plate was a 2-for-3 outing against Washington with an RBI and run scored, connecting on a home run.

Off The Bench

- Simone Heyward Has appeared in 28 games, making 11 starts in the outfield.
- Heyward is hitting .242 with eight hits on the season, three RBI and seven runs scored.
- Heyward is 7-for-8 on stolen bases.
- Had one hit in three at-bats in the opener against the Lady Vols with a run scored.
- Went 2-for-3 against Stanford with a run scored.
- Was 1-for-1 against Cal State Fullerton.
- Heyward connected on a bases-clearing, three-RBI triple against George Washington.
- Alex Boulet has appeared in 18 games as a pinch runner for the Tigers.
- Has stolen three bases this season with three runs scored on the season.
- Went 1-for-2 against George Washington with an RBI.
- Constance Quinn has made 18 appearances on the year with six starts.
- Quinn has nine hits on the season with a double, seven RBI and seven runs scored in 24 plate appearances.
- Had a four-game hitting streak from Feb. 7-14.
- Has nine games with at least one hit.
- Went 1-for-2 with a run scored in a start at shortstop in game two against Tennessee
- Hit the first home run of her career in the finale against Oklahoma, driving in two runs for the second time this season.
- In her only at-bat of the game, drove in a career-high 2 RBI with a run scored against Nicholls.
- Quinn had the game-tying hit in the bottom of the seventh in game one after Florida stormed back, as she played in two games and had

2014 LSU NCAA RANKINGS (TEAM)

CATEGORY	NAT'L RANK	CONF RANK	VALUE
Batting Average	51	7	0.307
Double Plays per Game	98	9	0.32
Doubles per Game	227	13	0.92
Earned Run Average	76	10	2.82
Fielding Percentage	51	9	0.968
Home Runs per game	42	9	0.95
Scoring	69	10	5.18
Slugging Percentage	42	8	0.474
Stolen Bases per Game	10	1	1.95
Triples per Game	29	3	0.29
WL Percentage	90	12	0.579

As of 4/7/14

2014 LSU NCAA RANKINGS (PLAYERS)

CATEGORY	NAT'L RANK	CONF RANK	VALUE
Hits Allowed Per Seven Innings			
Kelsee Selman	4	1	2.98
Baylee Corbello	44	9	4.77
Home Runs Per Game			
Sahvanna Jaquish	99	8	0.24
Home Runs			
Sahvanna Jaquish	57	7	9
Bianka Bell	134	20	7
Kells Kloss	134	20	7
Sacrifice Flies			
Sandra Simmons	29	2	3
Sacrifice Hits Per Game			
Jacee Blades	111	5	0.18
Shutouts			
Baylee Corbello	28	3	5
Kelsee Selman	137	15	2
Slugging Percentage			
Allison Falcon	115	13	0.663
Stolen Bases Per Game			
A.J. Andrews	20	2	0.63
Strikeouts			
Baylee Corbello	79	5	116
Strikeouts Per 7 Innings			
Kelsee Selman	23	3	8.9
Baylee Corbello	74	8	7.5
Triples			
Allison Falcon	11	1	4
A.J. Andrews	38	3	3
Triples Per Game			
Allison Falcon	35	1	0.11
A.J. Andrews	100	3	0.08

As of 4/7/14

- a stolen base.
- Had an RBI against George Washington.
- Garnered a hit in her only at-bat against George Washington in game one.
- Went 1-for-1 with a double and run scored against Murray State.
- Baylee Corbello has made 13 starts in the batting order for LSU.
- Corbello has five hits on the season with a double and three runs scored.
- Has been walked five times this season.
- Hailey Smith has played in nine games making six starts at third base.
- Smith is hitting .286 with four hits, an RBI and two runs scored with a stolen base.
- Went 1-for-2 against Auburn, earning a single in the final inning of the game.
- Scored once with two walks against George Washington.
- Was 1-for-1 with an RBI against Central Arkansas.
- Smith was 1-for-1 with a run scored against Murray State.
- Was 1-for-3 in the opener against Texas.
- Alayna Falcon has appeared in six games as a pinch hitter and outfielder.
- Falcon has two hits in four at-bats with a run scored.
- Went 1-for-1 in her only at bat against Lamar.
- Falcon scored after going 1-for-1 against George Washington.
- Kailey McCasland has appeared in seven games as a pinch runner, pinch hitter and first baseman.
- McCasland is 2-for-6 on the season with six RBI and two runs scored.
- Hit the third grand slam of the season against ULM as a pinch hitter to earn a career-high four RBI against the Warhawks.
- Had a fielder's choice RBI to give LSU an 8-0 lead over Nicholls.
- Was 1-for-1 against Long Beach State with an RBI single.
- Crossed the plate against SIU Edwardsville.
- Layna Savoie has seen action in eight games as a pinch hitter and pinch runner.
- Savoie has stolen three bases on the season, coming against Lamar and Northwestern.
- Dylan Supak has appeared in four games as a pinch hitter and outfielder, earning four at bats on the season.

In The Circle

- Baylee Corbello has made 17 starts, all in the circle for the Tigers which leads the team with a 11-5 record.
- Leads the staff with 108.2 innings pitched, 2.51 earned run average and 117 strikeouts.
- Has 12 complete-game outings and nine complete-game victories.
- Has five shutouts which is a team-high.
- Was named the first SEC Freshman of the Week and the LSWA Pitcher of the Month for the start of the season.
- Corbello has given up a run or less in 11 games this season.
- Has held teams to two hits or fewer in eight games.
- Allowed six runs on five hits with four walks and two strikeouts in 3.2 innings of work in the last game against the Lady Vols.
- In 4.1 innings of work allowed four runs on four hits with four walks and four strikeouts in the game two victory over Tennessee.
- In three innings against ULM, allowed no runs on two hits with four strikeouts and no walks in earning her 10th victory of the season.
- Gave up one run on four hits with three walks and three strikeouts in four innings of relief in game three against Alabama.
- Allowed a season high nine runs, eight earned, on eight hits in the loss to Alabama in game one of the series.
- Had a no-hitter through five innings in the opener against Oklahoma, finishing the game allowing two runs on four hits with five walks and five strikeouts.
- Nearly tossed a perfect game against Nicholls, holding the Colonels to one hit with 12 strikeouts for her fourth double-digit strikeout performance of the season.
- Pitched two innings of relief in the finale against Florida, allowing an unearned run with two strikeouts.
- Gave up a season high six runs on five hits with nine walks on 193 pitches in the series opener against the Gators. Earned double-digit

- strikeouts for the third time this season, fanning 11.
- Allowed five runs on four hits, snapping a six-game winning streak in starts in the finale against Auburn.
- Held Auburn to just one run on two hits with eight strikeouts to open the series to earn her eighth win of the season.
- Earned her fourth shutout of the season in scattering six hits with four walks and five strikeouts against Iowa State.
- Allowed a season-high seven hits, but held Stanford to only three runs in a 5-3 comeback win for LSU.
- Gave up a single run to Cal State Fullerton on six hits with seven walks in an 8-1 win over the Titans.
- Struck out six and held Long Beach State to just two hits in a 5-0 win over the 49'ers.
- Allowed three runs to Penn State with seven walks and four strikeouts on just two hits in an 11-3 win.
- Suffered the loss against South Alabama allowing two runs, one earned, on five hits with seven strikeouts.
- Earned her second consecutive shutout with a blanking of Northwestern on four hits with eight strikeouts against the Wildcats.
- Carried a no-hitter into the sixth inning against Oklahoma State, as she finished the game striking out 13 batters which is tied for third-most by a freshman pitcher in team history.
- Became the fourth freshman hurler to earn double-digit strikeouts in their first start at LSU, fanning 10 Minnesota batters and retiring 21 of the last 23 in a 1-0 loss to Minnesota.
- Kelsee Selman has made 13 appearances with six starts on the season.
- Is 4-2 on the season with a 2.45 ERA.
- Combined to go on a 20.0 inning shutout streak over four-plus games.
- Was named the SEC Pitcher of the Week after the Purple and Gold Challenge where she gave up three hits in 11 innings of work with 16 strikeouts.
- Named to the Purple and Gold Challenge All-Tournament team and MVP.
- Became the 34th pitcher in team history to throw a no hitter, and the first since 2001 to do it in only six innings.
- Pitched the final two innings against the Warhawks, allowing one run on no hits with three walks and four strikeouts, earning three in the final inning by retiring the side.
- Pitched a third of an inning, allowing two hits on Friday against Alabama.
- Took both losses against Florida after giving up four runs on three hits with two walks and a strikeout in 0.2 innings of work.
- Allowed two runs on a home run to snap her scoreless streak in the finale against Auburn.
- Pitched the final 2.2 innings in game two against Auburn with two walks and a strikeout.
- Earned the win in relief against Northwestern State going the final 4.2 innings, giving up one hit with four walks and two strikeouts.
- Shutout Lamar with seven strikeouts and holding the Lady Cardinals to just three hits.
- No-hit Jackson State after walking the first batter of the first inning then retiring the rest with nine strikeouts.
- Pitched four innings against George Washington allowing four runs on three hits with six walks and seven strikeouts.
- Struck out 13 Central Arkansas batters to earn the first win of her collegiate career.
- Gave up two runs in 1.2 innings against Murray State with five walks and two strikeouts.
- Pitched two innings of relief in her first action at LSU, with a walk and a strikeout against Texas.
- Ashley Czechner
- Ashley Czechner has appeared in 19 games with 15 starts in her senior season.
- Czechner is 7-9 on the season with a 3.33 earned run average.
- Won three-straight from Feb. 7-15 after suffering the loss in the season opener to Texas.
- Pitched an SEC individual season-high 12 innings against Harvard.

THE LAST TIME A TIGER ...

Scored three runs in a game:	Sandra Simmons, at ULM, 04/01/14
Scored four runs in a game:	Ashley Langoni, at South Carolina, 03/25/12
Had four hits in a game:	Jacee Blades, vs. No. 3 Oregon, 02/21/14
Had five hits in a game:	Juliana Santos, at Arkansas, 04/02/11
Had five RBIs in a game:	Ashley Langoni, at Arkansas, 04/01/11
Had six RBIs in a game:	Kellsy Kloss, vs. No. 14 Michigan, 03/02/13
Had seven RBIs in a game:	Stephanie Hill, Nicholls State, 04/01/04
Had two doubles in a game:	Allison Falcon, vs. No. 1 Florida, 03/15/14
Had three doubles in a game:	Tessa Lynam, Jackson State, 02/28/03
Had two triples in a game:	Allison Falcon, vs. Penn State, 02/17/14
Had two home runs in a game:	Sahvanna Jaquish, vs. No. 1 Florida, 03/14/14
Hit a grand slam:	Kailey McCasland, at ULM, 04/01/14
Lead off game with home run:	Kirsten Shortridge, at Hawai'i, 02/07/09
Lead off inning with home run:	Constance Quinn, at No. 22 Oklahoma, 03/23/14
Hit an inside-the-park home run:	Shannon Stein, vs. Auburn, 05/08/08
Hit a walk-off home run to win regulation game:	Bianka Bell, vs. No. 2 Tennessee, 04/04/14
Hit a walk-off home run to win an extra inning game:	Anissa Young, No. 1 Alabama [10th], 04/09/11
Had eight total bases in a game:	Tammy Wray, South Carolina, 03/23/13
Had nine total bases in a game:	Sahvanna Jaquish, at Auburn, 03/08/14
Had 10 total bases in a game:	Anissa Young, Southeastern Louisiana, 02/24/10
Had 13 total bases in a game:	Ashlee Ducote, at South Carolina [Gm 2], 04/14/00
Drew three walks in a game:	Sandra Simmons, at Nicholls, 03/19/14
Drew four walks in a game:	Ashley Langoni, Penn State, 02/11/12
Drew two intentional walks in a game:	Killian Roessner, Troy, 03/11/08
Drew three intentional walks in a game:	Stephanie Hill, at Ole Miss [Gm 1], 04/17/04
Hit by pitch twice in a game:	Bianka Bell, Kentucky, 03/15/13
Struck out three times in a game:	A.J. Andrews, No. 1 Florida, 03/14/14
Struck out four times in a game:	Alex Boulet, No. 1 Alabama, 04/08/11
Struck out five times in a game:	Ashley Lewis, Southern Miss, 05/20/00
Had two sacrifices hits in a game:	Jacee Blades, vs. SIUE, 02/07/14
Had three sacrifice hits in a game:	Tara Asbill, at Alabama [Gm 1], 05/05/00
Had two sacrifice flies in a game:	Sandra Simmons, vs. Penn State, 02/17/14
Had two stolen bases in a game:	A.J. Andrews, at No. 7 Alabama, 03/29/14
Had three stolen bases in a game:	A.J. Andrews, vs. George Washington, 02/15/14
Had four stolen bases in a game:	Cassie Troclair, vs. Sacred Heart, 05/21/11
Seven-inning complete-game shutout:	Baylee Corbello, vs. Iowa State, 03/01/14
Extra-inning complete-game shutout:	Rachele Fico, at Mississippi State [14 IP], 03/08/13
Tossed a perfect game:	Rachele Fico vs. Southeastern Louisiana [5 IP], 02/16/11
Tossed a no-hitter:	Kelsee Selman, vs. Jackson State, 02/28/14
Seven-inning no-hitter:	Rachele Fico, vs. Ohio State [7 IP], 02/22/13
Seven-inning complete-game one-hitter:	Baylee Corbello, vs. Oklahoma State, 02/08/14
Recorded 13 strikeouts in a game:	Kelsee Selman, vs. Central Arkansas, 02/09/14
Recorded 14 strikeouts in a game:	Rachele Fico, Tulsa, 02/09/13
Recorded 15 strikeouts in a game:	Dani Hofer, Auburn, 03/21/08
Recorded 16 strikeouts in a game:	Dani Hofer, vs. South Florida, 03/16/08
Recorded 17 strikeouts in a game:	Brittany Mack, at No. 10 Missouri [Gm 1], 05/27/11
Recorded 18 strikeouts in a game:	Rachele Fico, vs. Syracuse, 05/20/11
Recorded 19 strikeouts in a game:	Britni Sneed, vs. Oklahoma, 05/26/01
Recorded 22 strikeouts in a game:	Rachele Fico, at Mississippi State, 03/08/13
Pitched 10+ innings:	Rachele Fico, Tulsa [10 IP], 02/09/13
Pitched 11+ innings:	Ashley Czechner, vs. Harvard, 02/28/14
Pitched 13+ innings:	Rachele Fico, at Mississippi State [14 IP], 03/08/13
Had 18 putouts:	Morgan Russell, vs. Syracuse, 05/20/11
Had 19 putouts:	Jennifer Schuelke, vs. Oklahoma, 05/26/01
Had 23 putouts:	Lauren Houston, at Mississippi State, 03/08/13
Had six assists:	Tammy Wray, No. 12 Missouri, 04/21/13
Had seven assists:	Juliana Santos, at Kentucky [Gm. 2], 04/25/10
Had eight assists:	Tammy Wray, No. 22 Florida State, 04/18/12
Had two errors:	Bianka Bell, vs. No. 1 Florida, 02/15/14
Had three errors:	Hailey Smith, vs. Central Arkansas, 02/09/14
Had four errors:	Andrea Smith, vs. Arizona, 05/26/06

- Was named to the Purple and Gold Challenge All-Tournament team.
- Czechner has struck out six batters in a game three times this season and has eight games with no less than four strikeouts.
- Took the loss in the finale against Tennessee after allowing three runs on four hits with a walk in 2.1 innings.
- Earned the first save of the year for the team in pitching the final 2.2 innings in game two and allowing no runs on three hits with a walk and two strikeouts.
- Improved to 7-8 on the season after earning the complete game victory over Tennessee after giving up four runs, all unearned on seven hits with two walks and two strikeouts
- Earned the loss in games two and three to Alabama, as two unearned runs crossed the plate in game two, as she gave up four runs on Sunday in the finale.
- Suffered the loss to OU after allowing three runs, two earned, on six hits with four strikeouts and three walks with an error.
- Snapped a three-game losing streak after earning the only win of the weekend as she held Florida to just two runs in a complete-game victory
- Came on in relief against Murray State and held the Racers to two hits with two strikeouts in earning the victory.

INNING-BY-INNING

SCORE BY INNINGS	1	2	3	4	5	6	7	8	9	10 +	TOTALS
LSU	31	39	26	39	40	10	12	0	0	0	197
Opponents	22	11	23	14	20	14	12	1	0	1	118



2014 LSU Softball
Overall Statistics for LSU (as of Apr 06, 2014)
(All games Sorted by Batting avg)



Record: 22-16 Home: 14-8 Away: 4-7 Neutral: 4-1 SEC: 4-8

Player	avg	gp-gs	ab	r	h	2b	3b	hr	rbi	tb	slg%	bb	hp	so	gdp	ob%	sf	sh	sb-att	po	a	e	fld%		
6 A.J. Andrews	.382	38-38	123	26	47	5	3	1	16	61	.496	17	1	24	0	.458	1	2	24-25	45	0	2	.957		
32 Allison Falcon	.350	38-37	100	20	35	3	4	6	23	64	.640	8	1	8	0	.400	1	0	5-5	75	36	2	.982		
27 Bianca Bell	.333	38-38	105	26	35	8	1	7	26	66	.629	19	5	19	0	.457	0	2	5-7	61	50	10	.917		
23 Jacee Blades	.327	38-37	107	19	35	0	1	0	10	37	.346	7	3	12	0	.385	0	7	9-12	59	1	2	.968		
3 Sandra Simmons	.301	38-38	103	26	31	4	1	3	24	46	.447	20	1	14	0	.409	3	2	4-4	183	18	2	.990		
77 Kellsi Kloss	.277	36-34	94	21	26	5	0	7	17	52	.553	13	1	15	0	.370	0	0	3-3	135	14	0	1.000		
2 Savannah Jaquish	.273	38-38	110	19	30	3	0	9	31	60	.545	10	2	10	0	.341	1	1	1-1	108	8	2	.983		

24 Alayna Falcon	.500	6-0	4	1	2	0	0	0	0	2	.500	2	0	0	0	.667	0	0	0-0	0	0	0	.000		
5 Constance Quinn	.375	18-6	24	7	9	2	0	1	7	14	.583	2	1	3	0	.444	0	3	1-1	8	10	1	.947		
33 Kailey McCasland	.333	7-0	6	2	2	0	0	1	6	5	.833	1	0	1	0	.429	0	0	0-0	1	0	1	.500		
26 Bailey Landry	.329	31-28	73	10	24	2	0	0	7	26	.356	9	0	16	0	.398	1	1	7-8	8	2	2	.833		
21 Hailey Smith	.286	9-6	14	2	4	0	0	0	1	4	.286	8	1	5	0	.565	0	0	1-1	4	9	3	.813		
25 Simone Heyward	.242	28-11	33	7	8	0	1	0	3	10	.303	4	0	10	0	.324	0	0	7-8	11	0	0	1.000		
19 Baylee Corbello	.185	13-13	27	3	5	1	0	0	1	6	.222	6	0	2	0	.324	1	0	0-0	2	20	0	1.000		
9 Alex Boulet	.167	18-0	6	3	1	0	0	0	1	1	.167	0	1	0	0	.286	0	0	4-4	1	0	0	1.000		
18 Tammy Wray	.163	36-31	49	3	8	2	0	1	5	13	.265	6	0	5	0	.255	0	2	0-0	33	52	3	.966		
11 Dylan Supak	.000	4-0	4	1	0	0	0	0	0	0	.000	0	1	1	0	.200	0	0	0-0	0	0	0	.000		
1 Layna Savoie	.000	8-0	2	1	0	0	0	0	0	0	.000	0	0	1	0	.000	0	0	3-3	0	0	0	.000		
Totals	.307	38	984	197	302	35	11	36	178	467	.475	132	18	146	0	.396	8	20	74-82	736	237	32	.968		
Opponents	.217	38	907	118	197	24	0	21	105	284	.313	164	30	224	0	.353	6	21	22-31	715	316	43	.960		

LOB - Team (256), Opp (277). DPs turned - Team (13), Opp (17). CI - Team (0), Opp (3). IBB - Team (3), Andrews 2, Jaquish 1, Opp (1). Picked off - Andrews 1.

(All games Sorted by Earned run avg)

Player	era	w-l	app	gs	cg	sho	sv	ip	h	r	er	bb	so	2b	3b	hr	b/avg	wp	hp	bk	sfa	sha
16 Kelsee Selman	2.45	4-2	13	6	3	2/0	0	40.0	17	14	14	31	51	2	0	3	.122	5	6	0	0	0
19 Baylee Corbello	2.51	11-5	20	17	12	5/0	0	108.2	74	45	39	84	117	8	0	9	.190	9	11	1	1	8
99 Ashley Czechner	3.33	7-9	20	15	10	0/0	1	96.2	106	59	46	49	56	14	0	9	.280	1	13	0	5	13
Totals	2.82	22-16	38	38	25	7/0	1	245.1	197	118	99	164	224	24	0	21	.217	15	30	1	6	21
Opponents	4.79	16-22	38	38	21	4/0	1	238.1	302	197	163	132	146	35	11	36	.307	14	18	6	8	20

PB - Team (7), Jaquish 4, Kloss 3, Opp (3). Pickoffs - Team (1), Kloss 1, Opp (1). SBA/ATT - Kloss (13-19), Czechner (12-17), Corbello (10-14), Jaquish (9-12).

STARTERS BY POSITION RECORD

P	STARTS	RECORD	2B	STARTS	RECORD	LF	STARTS	RECORD	DP	STARTS	RECORD
Baylee Corbello	17	11-6	Allison Falcon	35	20-15	Jacee Blades	37	22-15	Savannah Jaquish	21	11-10
Ashley Czechner	15	6-9	Constance Quinn	3	2-1	Bailey Landry	1	0-1	Kellsi Kloss	12	9-3
Kelsee Selman	6	5-1						Allison Falcon	2	1-1	
			SS	STARTS	RECORD	CF	STARTS	RECORD	Bianka Bell	2	1-1
			Bianka Bell	36	21-15	A.J. Andrews	38	22-16	Constance Quinn	1	0-1
			Constance Quinn	1	1-0						
			Savannah Jaquish	1	0-1	RF	STARTS	RECORD			
						Bailey Landry	27	15-12			
						Simone Heyward	11	7-4			
1B	STARTS	RECORD	3B	STARTS	RECORD						
Sandra Simmons	38	22-16	Tammy Wray	31	19-12						
			Hailey Smith	6	3-3						
			Constance Quinn	1	0-1						



2014 LSU Softball
Conference statistics for LSU (as of Apr 06, 2014)
(SEC games only Sorted by Batting avg)



Record: 4-8 Home: 3-3 Away: 1-5 SEC: 4-8

Player	avg	gp-gs	ab	r	h	2b	3b	hr	rbi	tb	slg%	bb	hp	so	gdp	ob%	sf	sh	sb-att	po	a	e	fld%	
6 A.J. Andrews	.385	12-12	39	7	15	2	1	1	5	22	.564	5	0	9	0	.455	0	0	5-5	15	0	1	.938	
32 Allison Falcon	.344	12-12	32	5	11	3	1	1	5	19	.594	3	0	4	0	.400	0	0	1-1	26	19	0	1.000	
26 Bailey Landry	.320	10-10	25	2	8	1	0	0	0	9	.360	1	0	4	0	.346	0	0	1-1	1	1	0	1.000	
27 Bianka Bell	.306	12-12	36	5	11	3	0	2	8	20	.556	2	1	4	0	.359	0	1	1-2	25	14	6	.867	
2 Savannah Jaquish	.278	12-12	36	6	10	1	0	4	7	23	.639	4	0	5	0	.350	0	1	0-0	12	2	1	.933	
3 Sandra Simmons	.211	12-12	38	2	8	0	0	0	2	8	.211	0	0	6	0	.211	0	0	0-0	65	5	0	1.000	
77 Kellsy Kloss	.194	12-11	31	2	6	0	0	2	2	12	.387	3	0	7	0	.265	0	0	0-0	49	5	0	1.000	
23 Jacee Blades	.152	12-12	33	2	5	0	0	0	1	5	.152	3	1	5	0	.243	0	2	1-2	20	0	1	.952	

5 Constance Quinn	.500	5-2	4	2	2	1	0	0	1	3	.750	1	0	0	0	.600	0	2	1-1	2	5	1	.875	
21 Hailey Smith	.500	1-0	2	0	1	0	0	0	0	1	.500	0	0	0	0	.500	0	0	0-0	0	1	0	1.000	
25 Simone Heyward	.200	8-2	5	2	1	0	0	0	0	1	.200	1	0	2	0	.333	0	0	3-3	5	0	0	1.000	
19 Baylee Corbello	.167	3-3	6	0	1	1	0	0	1	2	.333	0	0	0	0	.143	1	0	0-0	0	5	0	1.000	
18 Tammy Wray	.111	12-11	18	0	2	1	0	0	1	3	.167	1	0	3	0	.158	0	2	0-0	11	17	2	.933	
11 Dylan Supak	.000	1-0	1	0	0	0	0	0	0	0	.000	0	0	0	0	.000	0	0	0-0	0	0	0	.000	
33 Kailey McCasland	.000	1-0	1	0	0	0	0	0	0	0	.000	0	0	0	0	.000	0	0	0-0	0	0	0	.000	
1 Layna Savoie	.000	1-0	0	0	0	0	0	0	0	0	.000	0	0	0	0	.000	0	0	0-0	0	0	0	.000	
9 Alex Boulet	.000	3-0	0	2	0	0	0	0	0	0	.000	0	0	0	0	.000	0	0	0-0	0	0	0	.000	
Totals	.264	12	307	37	81	13	2	10	33	128	.417	24	2	49	0	.320	1	8	13-15	231	81	13	.960	
Opponents	.273	12	304	66	83	7	0	15	59	135	.444	59	17	53	0	.415	3	7	10-11	235	93	9	.973	

LOB - Team (72), Opp (93). DPs turned - Team (7), Opp (7). CI - Team (0), Opp (2). IBB - Team (2), Andrews 1, Jaquish 1, Opp (1).

(SEC games only Sorted by Earned run avg)

Player	era	w-l	app	gs	cg	sho	sv	ip	h	r	er	bb	so	2b	3b	hr	b/avg	wp	hp	bk	sfa	sha		
99 Ashley Czechner	4.32	2-4	9	6	3	0/0	1	34.0	45	27	21	15	14	3	0	5	.317	0	7	0	2	3		
19 Baylee Corbello	5.55	2-2	8	5	1	0/0	0	35.1	32	33	28	38	36	4	0	7	.241	3	7	0	1	4		

16 Kelsee Selman	5.48	0-2	5	1	0	0/0	0	7.2	6	6	6	6	3	0	0	3	.207	1	3	0	0	0		
Totals	5.00	4-8	12	12	4	0/0	1	77.0	83	66	55	59	53	7	0	15	.273	4	17	0	3	7		
Opponents	2.68	8-4	12	12	8	2/0	1	78.1	81	37	30	24	49	13	2	10	.264	3	2	0	1	8		

PR - Team (1) Kloss 1. SRA/ATT - Kloss (8-9) Corbello (7-7) Czechner (3-4) Jaquish (2-2)

STARTERS BY LINEUP SPOT RECORD

1ST	STARTS	RECORD	4TH	STARTS	RECORD	7TH	STARTS	RECORD	Jacee Blades	STARTS	RECORD
A.J. Andrews	38	22-16	Savannah Jaquish	20	11-9	Allison Falcon	36	20-16	Constance Quinn	1	1-0
2ND	STARTS	RECORD	Bianka Bell	17	11-6	Constance Quinn	1	1-0			
Jacee Blades	30	19-11	Kellsy Kloss	1	0-1	Baylee Corbello	1	1-0			
Sandra Simmons	4	2-2	5TH	STARTS	RECORD	8TH	STARTS	RECORD			
Bailey Landry	3	2-1	Kellsy Kloss	23	14-9	Tammy Wray	19	11-8			
Constance Quinn	1	0-1	Bianka Bell	10	7-3	Baylee Corbello	11	7-4			
3RD	STARTS	RECORD	Constance Quinn	2	1-1	Hailey Smith	6	3-3			
Sandra Simmons	22	15-7	Sandra Simmons	1	0-1	Allison Falcon	1	1-0			
Bianka Bell	11	4-7	Baylee Corbello	1	0-1	Kellsy Kloss	1	0-1			
Savannah Jaquish	5	3-2	Savannah Jaquish	1	0-1	9TH	STARTS	RECORD			
			6TH	STARTS	RECORD	Bailey Landry	19	11-9			
			Savannah Jaquish	12	8-4	Simone Heyward	11	7-4			
			Sandra Simmons	11	6-5						
			Kellsy Kloss	9	6-3						

NO.	PLAYER [HR NUMBER]	OPPONENT [DATE]	PITCHER	ON-BASE	INNING	OUTS	COUNT	SCORE	FINAL
1	Sandra Simmons [1]	Oklahoma State [Feb. 8]	Freeman [RHP]	0	2	2	0-1	0-0	W, 1-0
2	Bianka Bell [1]	Central Arkansas [Feb. 9]	Studioso [RHP]	1	1	1	1-0	2-0	W, 8-1
3	Sahvanna Jaquish [1]	Central Arkansas [Feb. 9]	Jenkins [RHP]	0	6	0	2-0	7-1	W, 8-1
4	Kellsie Kloss [1]	Northwestern [Feb. 14]	Wood [RHP]	1	4	2	1-1	0-0	W, 4-0
5	Allison Falcon [1]	Northwestern [Feb. 14]	Wood [RHP]	0	4	2	3-2	2-0	W, 4-0
6	Allison Falcon [2]	George Washington [Feb. 14]	Rico [LHP]	3	2	2	3-2	7-1	W, 14-4
7	Bianka Bell [2]	George Washington [Feb. 15]	Martin [RHP]	1	1	1	2-2	2-0	W, 8-4
8	Sandra Simmons [1]	George Washington [Feb. 15]	Martin [RHP]	0	5	2	1-1	4-4	W, 8-4
9	Bianka Bell [3]	Penn State [Feb. 17]	Jones [LHP]	0	3	0	1-1	6-0	W, 11-3
10	Kellsie Kloss [2]	Penn State [Feb. 17]	Jones [LHP]	0	3	0	0-0	7-0	W, 11-3
11	Bianka Bell [4]	Long Beach State [Feb. 20]	Hansen [RHP]	0	3	1	0-0	2-0	W, 13-0
12	Kellsie Kloss [3]	Long Beach State [Feb. 20]	Pola [RHP]	2	5	2	1-2	10-0	W, 13-0
13	Allison Falcon [3]	Washington [Feb. 20]	Inglesby [RHP]	0	4	0	0-0	3-2	W, 6-3
14	Tammy Wray [1]	Washington [Feb. 20]	Inglesby [RHP]	0	4	0	2-2	4-2	W, 6-3
15	Kellsie Kloss [4]	Washington [Feb. 20]	Inglesby [RHP]	0	5	2	2-2	5-2	W, 6-3
16	Bianka Bell [5]	Oregon [Feb. 21]	Hawkins [LHP]	0	4	0	1-1	0-2	L, 1-4
17	Sahvannah Jaquish [2]	Cal State Fullerton [Feb. 21]	Wesley [RHP]	2	5	2	2-1	5-1	W, 8-1
18	Allison Falcon [4]	Stanford [Feb. 22]	Schreyer [RHP]	0	6	2	3-2	1-3	W, 5-3
19	Sahvanna Jaquish [3]	Jackson State [Feb. 28]	Townsend [RHP]	2	3	0	1-2	3-0	W, 8-0
20	Sahvanna Jaquish [4]	Lamar [March 1]	Schulz [RHP]	3	1	1	0-1	1-0	W, 10-0
21	Sandra Simmons [3]	Lamar [March 1]	Schulz [RHP]	2	2	1	0-1	5-0	W, 10-0
22	Kellsie Kloss [5]	Northwestern State [March 4]	Sells [RHP]	1	5	2	0-2	2-3	W, 5-3
23	Sahvanna Jaquish [5]	Auburn [March 8]	Harper [RHP]	0	2	0	1-1	1-2	L, 4-6
24	Bianka Bell [6]	Auburn [March 8]	Harper [RHP]	0	5	1	0-0	2-6	L, 4-6
25	Sahvanna Jaquish [6]	Auburn [March 8]	Harper [RHP]	0	5	2	3-1	3-6	L, 4-6
26	Sahvanna Jaquish [7]	Florida [March 14]	Gourley [LHP]	1	3	0	0-0	1-1	L, 6-7
27	Sahvanna Jaquish [8]	Florida [March 14]	Haeger [RHP]	0	5	0	2-2	4-1	L, 6-7
28	Kellsie Kloss [6]	Florida [March 14]	Haeger [RHP]	0	5	0	1-0	5-1	L, 6-7
29	Allison Falcon [5]	Florida [March 15]	Rogers [RHP]	0	4	1	2-1	3-0	W, 3-2
30	Sahvanna Jaquish [9]	Oklahoma [March 22]	Stevens [RHP]	0	4	0	3-2	0-0	L, 1-2
31	Constance Quinn [1]	Oklahoma [March 23]	Stevens [RHP]	0	4	0	0-1	3-0	L, 2-3
32	Kellsie Kloss [7]	Alabama [March 28]	Traina [RHP]	0	2	1	2-2	0-0	L, 1-5
33	Kailey McCasland [1]	ULM [April 1]	Wilson [RHP]	3	4	0	2-2	9-0	W, 14-1
34	Allison Falcon [6]	ULM [April 1]	Wilson [RHP]	0	5	2	2-1	13-1	W, 14-1
35	Bianka Bell [7]	Tennessee [April 4]	Renfro [RHP]	2	7	1	1-0	4-4	W, 7-4

Bold represents game tying or go-ahead home run

HOME RUN BREAKDOWN

SITE	COUNT	CLASS	GAME TYPE
Home 18	0-0 Count 5	Freshman 10	Non-Conference 26
Away 9	0-1 Count 4	Sophomore 17	SEC Regular Season 9
Neutral 8	0-2 Count 1	Junior 1	SEC Tournament 0
	1-0 Count 3	Senior 7	NCAA Tournament 0
HR TYPE	1-1 Count 5		GAME RESULT
Solo 22	1-2 Count 2		Wins 25
Two-Run 4	2-0 Count 1	INNING	Losses 10
Three-Run 5	2-1 Count 3	1st Inning 3	
Grand Slam 3	2-2 Count 6	2nd Inning 4	
	3-0 Count 0	3rd Inning 5	
NUMBER OF OUTS	3-1 Count 1	4th Inning 11	MISC
0 Outs 14	3-2 Count 4	5th Inning 9	Leadoff 8
1 Out 7		6th Inning 2	Inside the Park 0
2 Outs 12		7th Inning 1	
		Extra Innings 0	

DATE	OPPONENT	RESULT	INN	LSU R-H-E	OPP. R-H-E	RECORD [SEC]	PITCHER OF RECORD	ATT	TIME
Feb. 6	No. 10/10 Texas	L, 1-6	7	1-4-0	6-7-0	0-1 [0-0]	Czechner [0-1]	1,343	2:07
Feb. 7	Minnesota [1]	L, 0-1	7	0-2-0	1-2-2	0-2 [0-0]	Corbello [0-1]	1,168	2:08
Feb. 7	SIU Edwardsville [1]	W, 14-2	[5]	14-9-0	2-2-2	1-2 [0-0]	Czechner [1-1]	1,168	1:45
Feb. 8	Oklahoma State [1]	W, 1-0	7	1-3-0	0-1-0	2-2 [0-0]	Corbello [1-1]	1,628	2:04
Feb. 8	Murray State [1]	W, 10-2	[5]	10-13-0	2-2-1	3-2 [0-0]	Czechner [2-1]	1,628	2:00
Feb. 9	Central Arkansas [1]	W, 8-1	7	8-11-3	1-4-1	4-2 [0-0]	Selman [1-0]	1,289	2:26
Feb. 14	Northwestern [2]	W, 4-0	7	4-4-0	0-4-1	5-2 [0-0]	Corbello [2-1]	1,119	2:16
Feb. 14	George Washington [2]	W, 14-4	[5]	14-9-2	4-5-1	6-2 [0-0]	Czechner [3-1]	1,119	2:04
Feb. 15	No. 18/19 South Alabama [2]	L, 2-1	7	1-9-1	2-5-1	6-3 [0-0]	Corbello [2-2]	1,548	2:40
Feb. 15	George Washington [2]	W, 8-4	7	8-8-0	4-5-4	7-3 [0-0]	Czechner [4-1]	1,548	2:21
Feb. 17	Penn State [2]	W, 11-3	[5]	11-12-0	3-2-0	8-3 [0-0]	Corbello [3-2]	1,071	1:42
Feb. 17	Penn State [2]	L, 6-5	7	5-12-1	6-8-0	8-4 [0-0]	Czechner [4-2]	1,071	2:18
Feb. 20	Long Beach State [3]	W, 13-0	[5]	13-12-2	0-2-0	9-4 [0-0]	Corbello [4-2]	245	1:54
Feb. 20	No. 3/2 Washington	W, 6-3	7	6-10-3	3-7-2	10-4 [0-0]	Czecher [5-2]	327	2:14
Feb. 21	No. 6/8 Oregon	L, 1-4	7	1-6-1	4-8-1	10-5 [0-0]	Czechner [5-3]	289	2:11
Feb. 21	Cal State Fullerton	W, 8-1	7	8-11-0	1-6-2	11-5 [0-0]	Corbello [5-2]	220	2:22
Feb. 22	No. 13/11 Stanford	W, 5-3	7	5-10-0	3-7-1	12-5 [0-0]	Corbello [6-2]	474	2:00
Feb. 28	Harvard [4]	L, 0-1	[12]	0-7-0	1-9-1	12-6 [0-0]	Czechner [5-4]	1,147	3:05
Feb. 28	Jackson State [4]	W, 8-0	[6]	8-12-0	0-0-4	13-6 [0-0]	Selman [2-0]	1,147	1:49
March 1	Iowa State [4]	W, 1-0	7	1-5-1	0-6-2	14-6 [0-0]	Corbello [7-2]	1,360	2:01
March 1	Lamar [4]	W, 10-0	[5]	10-11-0	0-3-2	15-6 [0-0]	Selman [3-0]	1,360	1:33
March 4	Northwestern State	W, 5-3	7	5-6-3	3-6-1	16-6 [0-0]	Selman [4-0]	498	2:22
March 7	Auburn	W, 4-1	7	4-6-0	1-2-2	17-6 [1-0]	Corbello [8-2]	480	1:41
March 8	Auburn	L, 4-6	7	4-10-1	6-4-0	17-7 [1-1]	Czechner [5-5]	771	2:11
March 9	Auburn	L, 0-7	7	0-8-1	7-6-0	17-8 [1-2]	Corbello [8-3]	675	1:50
March 14	No. 1/1 Florida	L, 7-6	[8]	6-10-1	7-5-0	17-9 [1-3]	Selman [4-1]	1,767	3:05
March 15	No. 1/1 Florida	W, 3-2	7	3-9-3	2-5-0	18-9 [2-3]	Czechner [6-5]	2,189	2:13
March 16	No. 1/1 Florida	L, 2-10	[5]	2-5-2	10-11-0	18-10 [2-4]	Selman [4-2]	1,680	1:50
March 19	Nicholls	W, 9-0	[5]	9-10-0	0-1-1	19-10 [2-4]	Corbello [9-3]	412	1:35
March 22	No. 22/22 Oklahoma	L, 1-2	7	1-8-1	2-4-0	19-11 [2-4]	Corbello [9-4]	993	2:35
March 23	No. 22/22 Oklahoma	L, 2-3	7	2-6-2	3-6-1	19-12 [2]4	Czechner [6-6]	693	1:56
March 28	No. 7/5 Alabama	L, 1-9	[6]	1-4-1	9-10-0	19-13 [2-5]	Corbello [9-5]	2952	2:06
March 29	No. 7/5 Alabama	L, 1-2	7	1-10-2	2-7-0	19-14 [2-6]	Czechner [6-7]	3940	2:40
March 30	No. 7/5 Alabama	L, 1-5	7	1-4-0	5-11-0	19-15 [2-7]	Czechner [6-8]	3356	1:59
April 1	ULM	W, 14-1	[5]	14-11-0	1-2-4	20-15 [2-7]	Corbello [10-5]	1081	2:39
April 4	No. 2/2 Tennessee	W, 7-4	7	7-8-2	4-7-2	21-15 [3-7]	Czechner [7-8]	1396	2:05
April 5	No. 2/2 Tennessee	W, 8-4	7	8-5-0	4-7-4	22-15 [4-7]	Corbello [11-5]	1440	2:36
April 6	No. 2/2 Tennessee	L, 0-9	[6]	0-3-0	9-9-1	22-16 [4-8]	Czechner [7-9]	1432	1:50

Home games are bolded and played at Tiger Park; Rankings reflect NFCA and USA Softball Top 25 polls on day of game; [SEC] Southeastern Conference game; [1] Tiger Classic [Tiger Park]; [2] Tiger Invitational [Tiger Park]; [3] Mary Nutter Collegiate Classic [Palm Springs, Calif.]; [4] Purple & Gold Challenge [Tiger Park]; [5] SEC Tournament [Columbia, S.C.].

DATE	OPPONENT	1ST	2ND	3RD	4TH	5TH	6TH	7TH	8TH	9TH
Feb. 6	No. 10/10 Texas	Andrews	Blades	Bell	Jaquish	Kloss	Simmons	All. Falcon	Smith	Heyward
Feb. 7	Minnesota [1]	Andrews	Blades	Bell	Jaquish	Corbello	Simmons	All. Falcon	Wray	Heyward
Feb. 7	SIU Edwardsville [1]	Andrews	Blades	Bell	Jaquish	Kloss	Simmons	All. Falcon	Wray	Heyward
Feb. 8	Oklahoma State [1]	Andrews	Blades	Bell	Jaquish	Kloss	Simmons	Corbello	All. Falcon	Heyward
Feb. 8	Murray State [1]	Andrews	Blades	Simmons	Jaquish	Bell	Kloss	All. Falcon	Smith	Landry
Feb. 9	Central Arkansas [1]	Andrews	Blades	Simmons	Jaquish	Bell	Landry	All. Falcon	Smith	Quinn
Feb. 14	Northwestern [2]	Andrews	Blades	Simmons	Jaquish	Bell	Kloss	All. Falcon	Corbello	Landry
Feb. 14	George Washington [2]	Andrews	Blades	Simmons	Jaquish	Bell	Kloss	Quinn	Smith	Heyward
Feb. 15	No. 18/19 South Alabama [2]	Andrews	Blades	Simmons	Jaquish	Bell	Kloss	All. Falcon	Wray	Heyward
Feb. 15	George Washington [2]	Andrews	Blades	Simmons	Jaquish	Bell	Kloss	Quinn	Smith	Heyward
Feb. 16	Penn State [2]	Andrews	Blades	Simmons	Jaquish	Bell	Kloss	All. Falcon	Corbello	Landry
Feb. 16	Penn State [2]	Andrews	Blades	Simmons	Jaquish	Bell	Kloss	All. Falcon	Smith	Heyward
Feb. 20	Long Beach State [3]	Andrews	Blades	Simmons	Jaquish	Bell	Kloss	All. Falcon	Corbello	Landry
Feb. 20	No. 3/2 Washington [3]	Andrews	Blades	Simmons	Bell	Kloss	Jaquish	All. Falcon	Wray	Landry
Feb. 21	No. 6/8 Oregon [3]	Andrews	Blades	Simmons	Bell	Kloss	Jaquish	All. Falcon	Wray	Landry
Feb. 21	Cal State Fullerton [3]	Andrews	Blades	Simmons	Bell	Kloss	Jaquish	All. Falcon	Corbello	Landry
Feb. 22	No. 13/11 Stanford [3]	Andrews	Blades	Simmons	Bell	Kloss	Jaquish	All. Falcon	Wray	Heyward
Feb. 28	Harvard [4]	Andrews	Blades	Simmons	Bell	Kloss	Jaquish	All. Falcon	Wray	Landry
Feb. 28	Jackson [4]	Andrews	Blades	Simmons	Bell	Kloss	Jaquish	All. Falcon	Smith	Landry
March 1	Iowa State [4]	Andrews	Blades	Simmons	Bell	Kloss	Jaquish	All. Falcon	Corbello	Landry
March 1	Lamar [4]	Andrews	Blades	Simmons	Bell	Kloss	Jaquish	All. Falcon	Wray	Landry
March 4	Northwestern State	Andrews	Blades	Simmons	Bell	Kloss	Jaquish	All. Falcon	Wray	Landry
March 7	Auburn	Andrews	Blades	Simmons	Bell	Kloss	Jaquish	All. Falcon	Corbello	Landry
March 8	Auburn	Andrews	Blades	Simmons	Bell	Kloss	Jaquish	All. Falcon	Wray	Landry
March 9	Auburn	Andrews	Blades	Simmons	Bell	Kloss	Jaquish	All. Falcon	Corbello	Landry
March 14	No. 1/1 Florida	Andrews	Simmons	Bell	Jaquish	Kloss	Landry	All. Falcon	Corbello	Blades
March 15	No. 1/1 Florida	Andrews	Simmons	Bell	Jaquish	Kloss	Landry	All. Falcon	Wray	Blades
March 16	No. 1/1 Florida	Andrews	Simmons	Bell	Jaquish	Kloss	Landry	All. Falcon	Wray	Blades
March 19	Nicholls	Andrews	Landry	Bell	Jaquish	Kloss	Simmons	All. Falcon	Corbello	Blades
March 22	No. 22/22 Oklahoma	Andrews	Landry	Bell	Jaquish	Kloss	Simmons	All. Falcon	Corbello	Blades
March 23	No. 22/22 Oklahoma	Andrews	Quinn	Bell	Jaquish	Simmons	Landry	All. Falcon	Wray	Heyward
March 28	No. 7/5 Alabama	Andrews	Simmons	Bell	Jaquish	Kloss	Landry	All. Falcon	Wray	Blades
March 29	No. 7/5 Alabama	Andrews	Blades	Simmons	Bell	Jaquish	Kloss	All. Falcon	Wray	Landry
March 30	No. 7/5 Alabama	Andrews	Blades	Jaquish	Kloss	Bell	Simmons	All. Falcon	Wray	Landry
April 1	ULM	Andrews	Landry	Jaquish	Bell	Kloss	Simmons	All. Falcon	Wray	Blades
April 4	No. 2/2 Tennessee	Andrews	Blades	Jaquish	Bell	Kloss	Simmons	All. Falcon	Wray	Heyward
April 5	No. 2/2 Tennessee	Andrews	Blades	Jaquish	Bell	Quinn	Simmons	All. Falcon	Wray	Heyward
April 6	No. 2/2 Tennessee	Andrews	Blades	Jaquish	Bell	Quinn	Simmons	All. Falcon	Kloss	Landry

Home games are bolded and played at Tiger Park; Rankings reflect NFCA and USA Softball Top 25 polls on day of game; [SEC] Southeastern Conference game; [1] Tiger Classic [Tiger Park]; [2] Tiger Invitational [Tiger Park]; [3] Mary Nutter Collegiate Classic [Palm Springs, Calif.]; [4] Purple & Gold Challenge [Tiger Park]; [5] SEC Tournament [Columbia, S.C.].

DATE	OPPONENT	P	C	1B	2B	SS	3B	LF	CF	RF	DP
Feb. 6	No. 10/10 Texas	Czechner	Kloss	Simmons	All. Falcon	Bell	Smith	Blades	Andrews	Heyward	Jaquish
Feb. 7	Minnesota [1]	Corbello	Jaquish	Simmons	Quinn	Bell	Wray	Blades	Andrews	Heyward	All. Falcon
Feb. 7	SIU Edwardsville [1]	Czechner	Kloss	Simmons	All. Falcon	Bell	Wray	Blades	Andrews	Heyward	Jaquish
Feb. 8	Oklahoma State [1]	Corbello	Jaquish	Simmons	All. Falcon	Bell	Wray	Blades	Andrews	Heyward	Kloss
Feb. 8	Murray State [1]	Selman	Kloss	Simmons	All. Falcon	Bell	Smith	Blades	Andrews	Landry	Jaquish
Feb. 9	Central Arkansas [1]	Selman	Jaquish	Simmons	Quinn	Bell	Smith	Blades	Andrews	Landry	All. Falcon
Feb. 14	Northwestern [2]	Corbello	Kloss	Simmons	All. Falcon	Bell	Wray	Blades	Andrews	Landry	Jaquish
Feb. 14	George Washington [2]	Czechner	Jaquish	Simmons	All. Falcon	Bell	Wray	Blades	Andrews	Heyward	Kloss
Feb. 15	No. 18/19 South Alabama [2]	Corbello	Jaquish	Simmons	Quinn	Bell	Smith	Blades	Andrews	Heyward	Kloss
Feb. 15	George Washington [2]	Selman	Jaquish	Simmons	Quinn	Bell	Smith	Blades	Andrews	Heyward	Kloss
Feb. 17	Penn State [2]	Corbello	Kloss	Simmons	All. Falcon	Bell	Wray	Blades	Andrews	Landry	Jaquish
Feb. 17	Penn State [2]	Czechner	Jaquish	Simmons	All. Falcon	Bell	Smith	Blades	Andrews	Heyward	Kloss
Feb. 20	Long Beach State [3]	Corbello	Jaquish	Simmons	All. Falcon	Bell	Wray	Blades	Andrews	Landry	Kloss
Feb. 20	No. 3/2 Washington [3]	Czechner	Kloss	Simmons	All. Falcon	Bell	Wray	Blades	Andrews	Landry	Jaquish
Feb. 21	No. 6/8 Oregon [3]	Czechner	Kloss	Simmons	All. Falcon	Bell	Wray	Blades	Andrews	Landry	Jaquish
Feb. 21	Cal State Fullerton [3]	Corbello	Jaquish	Simmons	All. Falcon	Bell	Wray	Blades	Andrews	Landry	Kloss
Feb. 22	No. 13/11 Stanford [3]	Corbello	Kloss	Simmons	All. Falcon	Bell	Wray	Blades	Andrews	Heyward	Jaquish
Feb. 24	Harvard [4]	Czechner	Jaquish	Simmons	All. Falcon	Bell	Smith	Blades	Andrews	Landry	Kloss
Feb. 24	Jackson State [4]	Selman	Kloss	Simmons	All. Falcon	Bell	Wray	Blades	Andrews	Landry	Jaquish
March 1	Iowa State [4]	Corbello	Kloss	Simmons	All. Falcon	Bell	Wray	Blades	Andrews	Landry	Jaquish
March 1	Lamar [4]	Selman	Jaquish	Simmons	All. Falcon	Bell	Wray	Blades	Andrews	Landry	Kloss
March 4	Northwestern State	Czechner	Jaquish	Simmons	All. Falcon	Bell	Wray	Blades	Andrews	Landry	Kloss
March 7	Auburn	Corbello	Kloss	Simmons	All. Falcon	Bell	Wray	Blades	Andrews	Landry	Jaquish
March 8	Auburn	Czechner	Jaquish	Simmons	All. Falcon	Bell	Wray	Blades	Andrews	Landry	Kloss
March 9	Auburn	Corbello	Kloss	Simmons	All. Falcon	Bell	Wray	Blades	Andrews	Landry	Jaquish
March 14	No. 1/1 Florida	Corbello	Kloss	Simmons	All. Falcon	Bell	Wray	Blades	Andrews	Landry	Jaquish
March 15	No. 1/1 Florida	Czechner	Jaquish	Simmons	All. Falcon	Bell	Wray	Blades	Andrews	Landry	Kloss
March 16	No. 1/1 Florida	Selman	Kloss	Simmons	All. Falcon	Bell	Wray	Blades	Andrews	Landry	Jaquish
March 19	Nicholls	Corbello	Kloss	Simmons	All. Falcon	Bell	Wray	Blades	Andrews	Landry	Jaquish
March 22	No. 22/22 Oklahoma	Corbello	Kloss	Simmons	All. Falcon	Bell	Wray	Blades	Andrews	Landry	Jaquish
March 23	No. 22/22 Oklahoma	Czechner	Jaquish	Simmons	All. Falcon	Bell	Wray	Landry	Andrews	Heyward	Quinn
March 28	No. 7/5 Alabama	Corbello	Kloss	Simmons	All. Falcon	Bell	Wray	Blades	Andrews	Landry	Jaquish
March 29	No. 7/5 Alabama	Czechner	Kloss	Simmons	All. Falcon	Bell	Wray	Blades	Andrews	Landry	Jaquish
March 30	No. 7/5 Alabama	Czechner	Kloss	Simmons	All. Falcon	Bell	Wray	Blades	Andrews	Landry	Jaquish
April 1	ULM	Corbello	Jaquish	Simmons	All. Falcon	Bell	Wray	Blades	Andrews	Landry	Kloss
April 4	No. 2/2 Tennessee	Czechner	Kloss	Simmons	All. Falcon	Bell	Wray	Blades	Andrews	Heyward	Jaquish
April 5	No. 2/2 Tennessee	Corbello	Jaquish	Simmons	All. Falcon	Quinn	Wray	Blades	Andrews	Heyward	Bell
April 6	No. 2/2 Tennessee	Czechner	Kloss	Simmons	All. Falcon	Jaquish	Quinn	Blades	Andrews	Heyward	Bell

Home games are bolded and played at Tiger Park; Rankings reflect NFCA and USA Softball Top 25 polls on day of game; [SEC] Southeastern Conference game; [1] Tiger Classic [Tiger Park]; [2] Tiger Invitational [Tiger Park]; [3] Mary Nutter Collegiate Classic [Palm Springs, Calif.]; [4] Purple & Gold Challenge [Tiger Park]; [5] SEC Tournament [Columbia, S.C.].



#1 LAYNA SAVOIE • FR. • OF • R-R • LAKE CHARLES, LOUISIANA

SEASON HIGHS			CAREER HIGHS		
Runs			Runs		
1	at Oklahoma	03/23/14	1	at Oklahoma	03/23/14
Hits			Hits		
NA			NA		
RBIs			RBIs		
NA			NA		
Hit Streak			Hit Streak		
NA			NA		



#2 SAHVANNA JAQUISH • FR. • C/INF • R-R • HIGHLAND, CALIFORNIA

SEASON HIGHS			CAREER HIGHS		
Runs			Runs		
2 [3x]	Florida	03/14/14	2 [3x]	Florida	03/14/14
Hits			Hits		
3	at Auburn	03/08/14	3	at Auburn	03/08/14
RBIs			RBIs		
4	Lamar	03/01/14	4	Lamar	03/01/14
Hit Streak			Hit Streak		
5 [2x]		03/14-22/14	5 [2x]		03/14-22/14



#3 SANDRA SIMMONS • SO. • INF • L-L • FOUNTAIN VALLEY, CALIFORNIA

SEASON HIGHS			CAREER HIGHS		
Runs			Runs		
3	at ULM	04/01/14	3 [2x]	at ULM	04/01/14
Hits			Hits		
2 [9x]	at ULM	04/01/14	3	Central Connecticut State	05/18/13
RBIs			RBIs		
4 [2x]	Lamar	03/01/14	4 [4x]	Lamar	03/01/14
Hit Streak			Hit Streak		
4 [2x]		02/14-17/14	7		03/19/13-03/27/13



#5 CONSTANCE QUINN • FR. • INF • R-R • HATTIESBURG, MISSISSIPPI

SEASON HIGHS			CAREER HIGHS		
Runs			Runs		
2	Tennessee	04/05/14	2	Tennessee	04/05/14
Hits			Hits		
1 [9x]	Tennessee	04/05/14	1 [9x]	Tennessee	04/05/14
RBIs			RBIs		
2 [2x]	at Oklahoma	03/23/14	2 [2x]	at Oklahoma	03/23/14
Hit Streak			Hit Streak		
4		02/07-14/14	4		02/07-14/14



#6 A.J. ANDREWS • JR. • OF • L-R • OLDSMAR, FLORIDA

SEASON HIGHS			CAREER HIGHS		
Runs			Runs		
3	SIU Edwardsville	02/07/14	3 [3x]	SIU Edwardsville	02/07/14
Hits			Hits		
3 [4x]	at Auburn	03/07/14	4	vs. No. 14 Michigan	03/02/13
RBIs			RBIs		
3 [2x]	Tennessee	04/04/14	3 [5x]	Tennessee	04.05/14
Hit Streak			Hit Streak		
15		02/28/14-03/29/14	15		2/28/14-03/29/14



#9 ALEX BOULET • SR. • OF • L-L • CROWLEY, LOUISIANA

SEASON HIGHS			CAREER HIGHS		
Runs			Runs		
1 [3x]	at Alabama	03/30/14	2 [2x]	Nicholls State	04/06/11
Hits			Hits		
1	George Washington	02/14/14	2	Nicholls State	04/06/11
RBIs			RBIs		
1	George Washington	02/14/14	1 [4x]	George Washington	02/14/14
Hit Streak			Hit Streak		
NA			2		04/23/11-04/27/11



#11 DYLAN SUPAK • JR. • UTL • R-R • LAGRANGE, TEXAS

SEASON HIGHS			CAREER HIGHS		
Runs			Runs		
1	at ULM	04/01/14	2	at Nicholls State	03/07/12
Hits			Hits		
NA			2 [5x]	at South Carolina	03/23/12
RBIs			RBIs		
NA			2 [6x]	vs. No. 10 Oregon	03/01/13
Hit Streak			Hit Streak		
NA			3		03/07/12-03/10/12



#18 TAMMY WRAY • SR. • INF • R-R • SOMERS, NEW YORK

SEASON HIGHS			CAREER HIGHS		
Runs			Runs		
1 [3x]	at ULM	04/01/14	2 [11x]	South Carolina	03/23/13
Hits			Hits		
2 [2x]	at ULM	04/01/14	3	Southeastern Louisiana	02/16/11
RBIs			RBIs		
2	at ULM	04/01/14	4	South Carolina	03/23/13
Hit Streak			Hit Streak		
NA			6 [3x]		02/16/13-02/22/13



#19 BAYLEE CORBELLO • FR. • P/UTL • R-R • LAKE CHARLES, LOUISIANA

SEASON HIGHS			CAREER HIGHS		
Runs			Runs		
1 [3x]	at Nicholls	03/19/14	1 [3x]	at Nicholls	03/19/14
Hits			Hits		
1 [5x]	at Nicholls	03/19/14	1 [5x]	at Nicholls	03/19/14
RBIs			RBIs		
1	at Auburn	03/07/14	1	at Auburn	03/07/14
Hit Streak			Hit Streak		
2		02/20-21/14	2		02/20-21/14



#21 HAILEY SMITH • SO. • INF • R-R • BRISTOW, VIRGINIA

SEASON HIGHS			CAREER HIGHS		
Runs			Runs		
1 [2x]	Murray State	02/08/14	1 [8x]	George Washington	02/15/14
Hits			Hits		
1 [4x]	Auburn	03/09/14	2	Hampton	02/09/13
RBIs			RBIs		
1	Central Arkansas	02/09/14	1 [2x]	Central Arkansas	02/09/14
Hit Streak			Hit Streak		
3		02/06-09/14	3		02/06-09/14



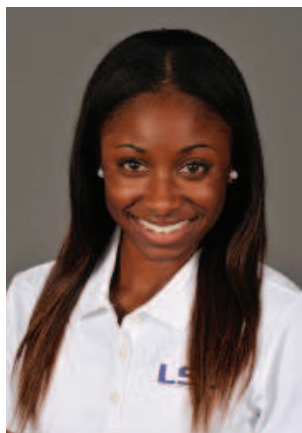
#23 JACEE BLADES • SR. • OF • L-R • BATON ROUGE, LOUISIANA

SEASON HIGHS			CAREER HIGHS		
Runs			Runs		
2 [3x]	Lamar	03/01/14	2 [7x]	Lamar	03/01/14
Hits			Hits		
4	Oregon	02/21/14	4	Oregon	02/21/14
RBIs			RBIs		
2 [2x]	Murray State	02/08/14	2 [6x]	Murray State	02/08/14
Hit Streak			Hit Streak		
9		02/17-28/14	9		02/17-28/14



#24 ALAYNA FALCON • SO. • OF • R-R • DONALDSONVILLE, LOUISIANA

SEASON HIGHS			CAREER HIGHS		
Runs			Runs		
1	George Washington	02/14/14	1	George Washington	02/14/14
Hits			Hits		
1 [2x]	Lamar	03/01/14	1 [4x]	Lamar	03/10/14
RBIs			RBIs		
NA			NA		
Hit Streak			Hit Streak		
2		02/14/13-03/01/10	2 [2x]		02/14/13-03/01/14



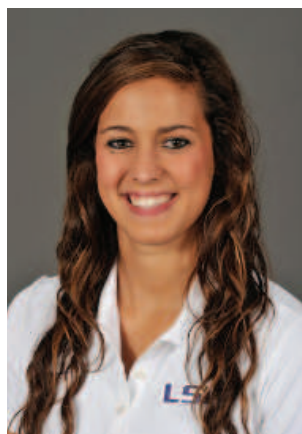
#25 SIMONE HEYWARD • SR. • OF • R-R • SACRAMENTO, CALIFORNIA

SEASON HIGHS

Runs		
1 [7x]	Tennessee	04/05/14
Hits		
2	Stanford	02/22/14
RBIs		
3	George Washington	02/14/14
Hit Streak		
2 [3x]		04/04-05/14

CAREER HIGHS

Runs		
4	Louisiana Tech	02/11/11
Hits		
3 [2x]	at Georgia	05/03/13
RBIs		
3 [2x]	George Washington	02/14/14
Hit Streak		
5 [2x]		04/21/13-05/05/13



#26 BAILEY LANDRY • FR. • OF • L-R • PRAIRIEVILLE, LOUISIANA

SEASON HIGHS

Runs		
2	Long Beach State	02/20/14
Hits		
2 [6x]	at Nicholls	03/19/14
RBIs		
2 [2x]	Penn State	02/17/14
Hit Streak		
6		02/28/14-03/08/14

CAREER HIGHS

Runs		
2	Long Beach State	02/20/14
Hits		
2 [6x]	at Nicholls	03/19/14
RBIs		
2 [2x]	Penn State	02/17/14
Hit Streak		
6		02/28/14-03/08/14



#27 BIANKA BELL • SO. • INF • R-R • TAMPA, FLORIDA

SEASON HIGHS

Runs		
3 [3x]	Jackson State	02/28/14
Hits		
3 [2x]	Lamar	03/01/14
RBIs		
3 [2x]	Tennessee	04/04/14
Hit Streak		
8		03/08-23/14

CAREER HIGHS

Runs		
3 [5x]	Jackson State	02/28/14
Hits		
3 [4x]	Lamar	03/01/14
RBIs		
4	at No. 25 South Alabama	03/27/13
Hit Streak		
8		03/08-23/14



#32 ALLISON FALCON • R SR. • INF • R-R • DONALDSONVILLE, LOUISIANA

SEASON HIGHS

Runs		
2 [3x]	at ULM	04/01/14
Hits		
3	Florida	03/15/14
RBIs		
4	George Washington	02/14/14
Hit Streak		
5		03/07-15/14

CAREER HIGHS

Runs		
3	Nicholls State	03/23/10
Hits		
3 [4x]	Florida	03/15/14
RBIs		
4	George Washington	02/14/14
Hit Streak		
9		06/02/12-02/15/13



#33 KAILEY MCCASLAND • JR. • UTL • R-R • SAN CLEMENTE, CALIFORNIA

SEASON HIGHS			CAREER HIGHS		
Runs			Runs		
1 [2x]	at ULM	04/01/14	2 [2x]	No. 22 North Carolina	02/08/13
Hits			Hits		
1 [2x]	at ULM	04/01/14	2 [3x]	Nicholls State	04/04/12
RBIs			RBIs		
4	at ULM	04/01/14	4	at ULM	04/01/14
Hit Streak			Hit Streak		
NA			3		03/07/12-03/09/12



#77 KELLSY KLOSS • SO. • C • R-R • CYPRESS, CALIFORNIA

SEASON HIGHS			CAREER HIGHS		
Runs			Runs		
3	Penn State	02/17/14	3	Penn State	02/17/14
Hits			Hits		
3	Penn State	02/17/14	3 [3x]	Penn State	02/17/14
RBIs			RBIs		
4	Long Beach State	02/20/14	6	vs. No. 14 Michigan	03/02/13
Hit Streak			Hit Streak		
6		02/15-20/14	6		02/15-20/14



#16 KELSEE SEMAN • FR. • P • R-R • LUFKIN, TEXAS

SEASON HIGHS			CAREER HIGHS		
Runs			Runs		
4	George Washington	02/15/14	4	George Washington	02/15/14
Hits			Hits		
4	Central Arkansas	02/09/14	4	Central Arkansas	02/09/14
Walks			Walks		
6	George Washington	02/15/14	6	George Washington	02/15/14
Strikeouts			Strikeouts		
13	Central Arkansas	02/09/14	13	Central Arkansas	02/09/14



#19 BAYLEE CORBELLO • FR. • P/UTL • R-R • LAKE CHARLES, LOUISIANA

SEASON HIGHS			CAREER HIGHS		
Runs			Runs		
9	at Alabama	03/28/14	6	Florida	03/14/14
Hits			Hits		
8	at Alabama	03/28/14	7	Stanford	02/22/14
Walks			Walks		
9	Florida	03/14/14	9	Florida	03/14/14
Strikeouts			Strikeouts		
13	Oklahoma State	02/08/14	13	Oklahoma State	02/08/14



#99 ASHLEY CZECHNER • SR. • P • R-R • PAWLEY'S ISLAND, SOUTH CAROLINA

SEASON HIGHS			CAREER HIGHS		
Runs			Runs		
6 [4x]	Florida	03/16/14	10	at Georgia	05/05/13
Hits			Hits		
9	Harvard	02/28/14	10	at Georgia	05/05/13
Walks			Walks		
6	Oregon	02/21/14	7	at No. 10 Texas A&M	04/13/13
Strikeouts			Strikeouts		
6 [3x]	Florida	03/16/14	15	Central Connecticut State	05/17/13