



2014 LSU Softball

LSU vs. No. 2/2 Tennessee • April 4-6, 2014

Tiger Park • Baton Rouge, La. • 6 p.m. • 6 p.m. • Noon

Radio: 104.5/104.9 FM

Live Stats: www.LSUsports.net

Live Updates: www.Facebook.com/LSUsoftball



SETTING THE SCENE

- ▶ LSU opens a seven-game home stand on Friday, hosting No. 2-ranked Tennessee for a three-game SEC series at Tiger Park in Baton Rouge.
- ▶ The Volunteers are making their first trip to Baton Rouge since the 2011 season.
- ▶ The Tigers have dropped the last seven meetings against Tennessee, as LSU is looking for its first win over the Volunteers since May of 2010.
- ▶ Tennessee is the third team in the last four weekends to be ranked in the top 10, and second to be ranked in the top three in the country when facing LSU this season.

SPORTS INFORMATION

Associate AD/SID	Michael Bonnette
Senior Associate SIDs	Bill Franques, Kent Lowe
Associate SID (Softball)	Clyde Verdin
Verdin's Email	cverdin@lsu.edu
Verdin's Office Phone	(225) 578-8204
Verdin's Cell Phone	(225) 726-3434
Associate SIDs	Matt Dunaway, Will Stafford, Jake Terry
Student SIDs	Brandon Berrio, Jordan Bergeron
Student SIDs	Taylor Brown, Caroline Downer
Student SIDs	Sara Ducote, Morgan Goff
Student SIDs	Cari Gold, Nik Kragthorpe
Student SIDs	Dimitri Skoumpordis, Bria Turner
Publications Director	Krystal Bennett
Graphics Design Coordinators	Hannah Brinks, Stephanie Lyles
Staff Photographer	Steve Franz
Photography Assistant	Chris Parent
Administrative Specialist	Pam LeBlanc

WHAT'S INSIDE

Intro/Schedule & Results/SEC Championship Tradition	1
Quick Facts/Possible Starting Lineup/2014 Roster	2
LSU Record When/Media Information/Inside Look	3
Season Notes/SEC Standings/Series History	4-11
Stats/Player Season/Career Highs	12-23

WHAT'S NEXT

- LSU remains in Tiger Park to host the McNeese State Cowgirls at 6 p.m. on Wednesday, April 9.
- The Tigers are 3-0 against teams from Louisiana this season, as the Cowgirls are the first to make their way to Baton Rouge.
- LSU is 25-2 all-time against McNeese State, defeating the Cowgirls 7-1 in Lake Charles last season.
- After McNeese, the Tigers host Georgia for a three-game SEC series April 11-13 in Baton Rouge.
- The Bulldogs won all three meetings against the Tigers last year, including knocking LSU out of the SEC tournament just four days after the series ended between the two teams.

SCHEDULE/RESULTS (20-15, 2-7 SEC)

FEBRUARY [13-6]	RESULT/TIME
6 No. 10/10 Texas [CST]	L, 1-6
7 Minnesota [1]	L, 0-1
7 SIU-Edwardsville [1]	W, 14-2 [5]
8 Oklahoma State [1]	W, 1-0
8 Murray State [1]	W, 10-2 [5]
9 Central Arkansas [1]	W, 8-1
14 Northwestern [2]	W, 4-0
14 George Washington [2]	W, 14-4 [5]
15 No. 18/19 South Alabama [2]	L, 1-2
15 George Washington [2]	W, 8-4
17 Penn State [2]	W, 11-3 [5]
17 Penn State [2]	L, 5-6
20 vs. Long Beach State [3]	W, 13-0 [5]
20 vs. No. 3/2 Washington [3]	W, 6-3
21 vs. No. 6/8 Oregon [3]	L, 1-4
21 vs. Cal State Fullerton [3]	W, 8-1
22 vs. No. 13/11 Stanford [3]	W, 5-3
28 Harvard [4]	L, 0-1 [12]
28 Jackson State [4]	W, 8-0 [5]
MARCH [6-9]	TIME
1 Iowa State [4]	W, 1-0
1 Lamar [4]	W, 10-0 [5]
4 at Northwestern State	W, 5-3
7 at Auburn [SEC]	W, 4-1
8 at Auburn [SEC]	L, 4-6
9 at Auburn [SEC]	L, 0-7
14 No. 1/1 Florida [SEC]	L, 6-7 [8]
15 No. 1/1 Florida [SEC, CST]	W, 3-2
16 No. 1/1 Florida [SEC, CST]	L, 2-10 [5]
19 at Nicholls	W, 9-0 [5]
22 at No. 22/16 Oklahoma	L, 1-2
23 at No. 22/16 Oklahoma	L, 2-3
28 at No. 7/5 Alabama [SEC]	L, 1-9 [6]
29 at No. 7/5 Alabama [SEC]	L, 1-2
30 at No. 7/5 Alabama [SEC, FSN]	L, 1-5
APRIL [1-0]	TIME

1 at Louisiana-Monroe	W, 14-1 [5]
4 No. 2/2 Tennessee [SEC]	6 p.m.
5 No. 2/2 Tennessee [SEC]	6 p.m.
6 No. 2/2 Tennessee [SEC]	12 p.m.
9 McNeese State	6 p.m.
11 No. 17/17 Georgia [SEC]	6 p.m.
12 No. 17/17 Georgia [SEC, CSS/CST]	6 p.m.
13 No. 17/17 Georgia [SEC]	1 p.m.
15 at Fordham	4 p.m.
16 at Hofstra	3 p.m.
16 at Hofstra	5:30 p.m.
18 at South Carolina [SEC]	6 p.m.
19 at South Carolina [SEC, ESPNU]	3 p.m.
20 at South Carolina [SEC]	12 p.m.
23 No. 19/19 South Alabama [CST]	6 p.m.
25 at Ole Miss [SEC]	6 p.m.
26 at Ole Miss [SEC]	2 p.m.
27 at Ole Miss [SEC]	1 p.m.
30 at Southeastern Louisiana	6 p.m.
MAY/JUNE [0-0]	TIME
2 Mississippi State [SEC]	6 p.m.
3 Mississippi State [SEC, CST]	7 p.m.
4 Mississippi State [SEC]	1 p.m.
7-10 SEC Tournament	TBA
15-18 NCAA Regionals	TBA
22-25 NCAA Super Regionals	TBA
29-J4 Women's College World Series	TBA

All game times are Central and subject to change; Rankings reflect NFCA and USA Softball Top 25 polls on day of game; Home games are bolded and played at Tiger Park; [SEC] Southeastern Conference game; [1] Tiger Classic [Tiger Park]; [2] Tiger Invitational [Tiger Park]; [3] Mary Nutter Collegiate Classic [Palm Springs, Calif.]; [4] Purple & Gold Challenge [Tiger Park]; [5] SEC Tournament [Columbia, S.C.]; [FSN] Fox Sports Network; [CSS] Charter/Comecast Sports Southeast; [CST] Cox Sports Television; [ESPN, ESPN2, ESPNU, ESPN3.com] SEC on ESPN Family of Networks.

LSU'S SEC CHAMPIONSHIP TRADITION

YEAR	EAST	WEST	OVERALL	TOURNAMENT
1997	South Carolina	LSU	South Carolina	South Carolina
1998	Florida	LSU	Florida	Alabama
1999	Tenn, USC	LSU	LSU	LSU
2000	Kentucky	LSU	LSU	South Carolina
2001	South Carolina	LSU	LSU	LSU
2002	South Carolina	LSU	LSU	LSU
2003	Georgia	Alabama	Georgia	Alabama
2004	Tennessee	LSU	LSU	LSU
2005	Georgia	Alabama	Georgia	Alabama
2006	Georgia	Alabama	Alabama	Tennessee
2007	Tennessee	LSU	Tennessee	LSU
2008	Florida	Alabama	Florida	Florida
2009	Florida	Alabama	Florida	Florida
2010	Florida	Alabama	Alabama	Alabama
2011	Florida	Alabama	Alabama	Tennessee
2012	Tennessee	Alabama	Alabama	Alabama
2013	Florida	LSU	Florida	Florida

CHAMPIONSHIPS	DIVISION	OVERALL	TOURNAMENT
LSU	9	5	5
Alabama	8	4	5
Florida	6	4	3
South Carolina	4	1	2
Tennessee	4	1	2
Georgia	3	2	0
Kentucky	1	0	0

QUICK FACTS

UNIVERSITY	
Location	Baton Rouge, La.
Founded	1860
Enrollment	29,549
Nickname	Tigers or Fighting Tigers
Colors	Purple and Gold
Mascot	Mike VI [live Bengal tiger]
Conference	Southeastern
Website	www.LSUports.net
President & Chancellor	Dr. F. King Alexander
NCAA Faculty Representative	Bill Demastes

ATHLETICS DEPARTMENT

Vice Chancellor/Director of Athletics	Joe Alleva
Sr. Associate AD/Operations	Verge Ausberry
Sr. Associate AD/Student Services & SWA	Miriam Segar
Sr. Associate AD/Compliance & Planning	Bo Bahnsen
Sr. Associate AD/SID	Michael Bonnette
Sr. Associate AD/Business	Mark Ewing
Sr. Associate AD/Facilities & Grounds	Ronnie Haliburton
Sr. Associate AD/Internal Affairs & Development	Eddie Nunez
Associate AD/Ticket Manager	Brian Broussard
Assistant AD/Marketing	Matt Shanklin

COACHING STAFF

Head Coach	Beth Torina
Record at LSU [Seasons]	102-56 [3]
Career Record [Seasons]	231-167 [7]
Assistant Coach	Howard Dobson
Year at LSU	3rd Season
Assistant Coach	Lindsay Leftwich
Year at LSU	3rd Season
Director of Operations	Quinlan Duhon
Year at LSU	5th Season

TEAM INFORMATION

2013 Overall Record [SEC Record]	42-16 [15-8 SEC]
2013 SEC Overall Finish [Division Finish]	T-3rd [1st - West]
2013 SEC Tournament Finish	Quarterfinals [Georgia]
2013 Postseason	NCAA Regionals [ULL]
2013 Final Ranking [NFCA/USA Softball]	18/16
Letterwinners Returning/Lost	14/5
Starters Returning/Lost	7/2
Pitchers Returning/Lost	1/2
Newcomers	6

FACILITY INFORMATION

Name [Capacity]	Tiger Park [2,489]
Dimensions [L-R]	200-210-220-210-200
Press Box Number	[225] 578-0154

PROGRAM HISTORY

All-Time Record [Percentage]	845-278-1 [.757]
NCAA Tournament Appearances	15
Years	1998-2004, 2006-2013
NCAA Tournament Record	46-31 [.597]
Women's College World Series Appearances	3
Years	2001, 2004 & 2012

SEC HISTORY

All-Time SEC Record [Percentage]	346-140-1 [.721]
SEC Western Division Titles	9
Years	1997-2002, 2004, 2007, 2013
SEC Regular Season Titles	5
Years	1999, 2000, 2001, 2002, 2004
All-Time SEC Tournament Record	36-17 [.679]
SEC Tournament Titles	5
Years	1999, 2001, 2002, 2004, 2007

POSSIBLE STARTING LINEUP • DEPTH CHART

POS	NAME	HT	CL.	GP-GS	H-AB	AVG	OB%	SLG%	R	BB	2B	3B	HR	RBI	TB	SF-SH	SB-ATT
C/DP	Kellsy Kloss	5-8	So.	33-32	26-89	.292	.388	.584	21	13	5	0	7	17	52	0-0	3-3
1B	Sandra Simmons	5-6	So.	35-35	31-96	.323	.433	.479	25	20	4	1	3	23	46	3-2	4-4
2B/DP	Allison Falcon	5-3	Sr.	35-34	31-95	.326	.369	.632	18	6	3	4	6	20	60	1-0	5-5
2B	Constance Quinn	5-5	Fr.	16-4	8-21	.381	.435	.571	5	1	1	0	1	7	12	0-1	1-1
SS	Bianka Bell	5-5	So.	35-35	33-96	.344	.471	.635	23	19	8	1	6	23	61	0-2	5-6
3B	Tammy Wray	5-7	Sr.	32-29	8-44	.182	.280	.295	3	6	2	0	1	5	13	0-1	0-0
3B	Hailey Smith	5-4	So.	9-6	4-14	.286	.565	.286	2	8	0	0	0	1	4	0-0	1-1
LF	Jacee Blades	5-7	Sr.	35-34	32-99	.323	.374	.343	17	6	0	1	0	9	34	0-7	8-11
CF	A.J. Andrews	5-4	Jr.	35-35	44-113	.389	.466	.487	24	16	5	3	0	13	55	1-2	24-25
RF	Bailey Landry	5-8	Fr.	30-27	23-71	.324	.395	.352	10	9	2	0	0	7	25	1-1	7-8
RF	Simone Heyward	5-1	Sr.	26-9	7-29	.241	.313	.310	5	3	0	1	0	3	9	0-0	5-6
DP/C	Sahvanna Jaquish	5-8	Fr.	35-35	29-100	.290	.363	.590	18	10	3	0	9	30	59	1-0	1-1
DP	Baylee Corbello	5-5	Fr.	13-13	5-27	.185	.324	.222	3	6	1	0	0	1	6	1-0	0-0
OF	Alex Boulet	5-0	Sr.	18-0	1-6	.167	.286	.167	3	0	0	0	0	1	1	0-0	4-4
OF	Alayna Falcon	5-3	So.	6-0	2-4	.500	.667	.500	1	2	0	0	0	0	2	0-0	0-0
OF	Layna Savoie	5-7	Fr.	8-0	0-2	.000	.250	.000	1	0	0	0	0	0	0	0-0	2-2
UTL	Kailey McCasland	5-5	Jr.	6-0	2-5	.400	.500	1.000	2	1	0	0	1	6	5	0-0	0-0
UTL	Dylan Supak	5-11	Jr.	3-0	0-3	.000	.250	.000	1	0	0	0	0	0	0	0-0	0-0

IN THE CIRCLE

POS	NAME	HT	CL.	APP-GS	W-L	ERA	CG	SHO	SV	IP	H	R	ER	BB	SO	WP-HP	OPBA
P	Baylee Corbello	5-5	Fr.	18-16	10-5	2.02	12	5/0	0	100.2	65	35	29	76	111	8-10	.182
P	Kelsee Selman	5-8	Fr.	13-6	4-2	2.45	3	2/0	0	40.0	17	14	14	31	51	5-6	.122
P	Ashley Czechner	5-10	Sr.	17-13	6-8	3.56	9	0/0	0	84.2	92	52	43	45	52	1-12	.280
P	Bianka Bell	5-5	So.	-	-	-	-	-	-	-	-	-	-	-	-	-	-

2014 ROSTER

NO.	NAME	POS	HT.	B-T	CL.-EXP	HOMETOWN [PREVIOUS SCHOOL]
1	Layna Savoie	OF	5-7	R-R	Fr.-HS	Lake Charles, La. [Barbe HS]
2	Sahvanna Jaquish	C/INF	5-8	R-R	Fr.-HS	Highland, Calif. [Redlands East Valley HS]
3	Sandra Simmons	INF	5-6	L-L	So.-1L	Fountain Valley, Calif. [Marina HS]
5	Constance Quinn	INF	5-5	R-R	Fr.-HS	Hattiesburg, Miss. [Oak Grove HS]
6	A.J. Andrews	OF	5-5	L-R	Jr.-2L	Oldsmar, Fla. [Countryside HS]
9	Alex Boulet	OF	5-0	L-L	Sr.-3L	Crowley, La. [Notre Dame HS]
11	Dylan Supak	UTL	5-11	R-R	Jr.-2L	LaGrange, Texas [LaGrange HS]
16	Kelsee Selman	P	5-8	R-R	Fr.-HS	Lufkin, Texas [Hudson HS]
18	Tammy Wray	INF	5-7	R-R	Sr.-3L	Somers, N.Y. [Somers HS]
19	Baylee Corbello	P/UTL	5-5	R-R	Fr.-HS	Lake Charles, La. [Sam Houston HS]
21	Hailey Smith	INF	5-5	R-R	So.-1L	Bristow, Va. [Stonewall Jackson HS]
23	Jacee Blades	OF	5-7	L-R	Sr.-3L	Baton Rouge, La. [Parkview Baptist School]
24	Alayna Falcon	OF	5-3	R-R	So.-1L	Donaldsonville, La. [Ascension Catholic HS]
25	Simone Heyward	OF	5-1	L-R	Sr.-3L	Sacramento, California [Rosemont HS]
26	Bailey Landry	OF	5-8	L-R	Fr.-HS	Gonzales, La. [East Ascension HS]
27	Bianka Bell	INF/P	5-5	R-R	So.-1L	Tampa, Fla. [Chamberlain HS]
32	Allison Falcon	INF	5-3	R-R	R-Sr.-3L	Donaldsonville, La. [Ascension Catholic HS]
33	Kailey McCasland	UTL	5-5	R-R	Jr.-2L	San Clemente, Calif. [San Clemente HS]
77	Kellsy Kloss	C	5-8	R-R	So.-1L	Cypress, Calif. [Pacifica HS]
99	Ashley Czechner	P	5-10	R-R	Sr.-1L	Pawley's Island, S.C. [Chattanooga State]

COACHING STAFF

Head Coach: Beth Torina [Florida, 2000]
Assistant Coach: Howard Dobson [McNeese State, 1997]
Assistant Coach: Lindsay Leftwich [Northwestern State, 2005]
Volunteer Coach: Sharonda McDonald [Texas A&M, 2008]
Director of Operations: Quinlan Duhon [LSU, 2008]

PRONUNCIATION GUIDE

Alex BOULET	BOO-lay	JACEE Blades	Jay-CEE
Ashley CZECHNER	check-NER	Sahvannah JAQUISH	Jay-KWISH
Rachee FICO	Rachel FEE-co	Layna SAVOIE	Sah-voy
Dylan SUPAK	SHOO-pak		

COACHING STAFF

Beth TORINA	tohr-REE-na	Quinlan DUHON	do-YAWN
-------------	-------------	---------------	---------

LSU'S RECORD WHEN ...

WIN-LOSS SUMMARY	2014	OVERALL
Overall	20-15	845-278-1
Non-Conference	18-8	417-90
SEC	2-7	346-140-1
SEC Tournament	0-0	36-17
NCAA Tournament	0-0	46-31
Home	12-7	471-89-1
Away	4-7	224-117
Neutral	4-1	150-72
vs. Top 10	2-7	63-99
vs. Top 25	2-6	164-179
Louisiana Teams	3-0	151-12

Day Games	13-13	598-225-1
Night Games	7-2	243-61

February	13-6	223-58
March	6-9	264-78
April	1-0	244-65-1
May	0-0	113-74

Sunday	1-4	164-75-1
Monday	1-1	6-1
Tuesday	2-0	55-8
Wednesday	1-0	115-17
Thursday	2-1	43-8
Friday	6-5	165-61
Saturday	7-4	297-108

RHP Starter	18-11	769-247-1
LHP Starter	2-4	76-31

Shutouts	7-3	383-101
Run-rule Games	9-2	197-21
Extra-inning Games	0-2	64-37

One-run Games	3-8	191-97
Two-run Games	2-1	101-50
Three-run + Games	11-4	550-129

Scored First	15-5	693-72-1
Opp. Scored First	5-10	153-207
Scored in 1st Inning	8-4	384-30-1
Opp. Scored in 1st Inning	3-7	112-97

Scored 0-2 Runs	2-12	134-217
Scored 3-5 Runs	5-2	308-54-1
Scored 6-9 Runs	6-1	287-7
Scored 10 + Runs	7-0	118-1

Opp. Scored 0-2 Runs	14-5	708-71
Opp. Scored 3-5 Runs	6-3	121-106-1
Opp. Scored 6-9 Runs	0-6	17-793
Opp. Scored 10 + Runs	0-1	1-19

Out-hit Opp.	17-7	710-68-1
Out-hit by Opp.	1-6	77-185
Hits are Tied	2-2	57-27

Made 0 Errors	13-4	403-71
Made 1 + Errors	7-11	442-207-1

Opp. Made 0 Errors	4-11	228-147
Opp. Made 1 + Errors	16-4	619-129-1

Leading after 6 Innings	9-2	551-21
Trailing after 6 Innings	1-9	24-198-1
Tied after 6 Innings	1-2	67-35

MEDIA INFORMATION

SPORTS INFORMATION

LSU Associate Sports Information Director Clyde Verdin handles the media relations duties for the Tiger softball team. Verdin can be reached at his office (225) 578-8204, on his cell (225) 726-3434 or by e-mail at cverdin@lsu.edu.

The Tiger Park press box phone number is (225) 578-0154 and will be available 90 prior to first pitch on gamedays.

PRACTICE TIMES/INTERVIEWS

LSU practices at Tiger Park and team sessions generally begin around 2 p.m. On most days, head coach Beth Torina and players are available for interviews beginning at 1:30 p.m. prior to the team practice session.

Members of the media who wish to cover practice should contact SID Clyde Verdin for the latest practice times. During the season, the Tigers generally take Monday's off.

Office and phone interviews may be arranged on special occasions. Torina's office is located on the fourth floor of the Athletic Administration Building.

All interview requests must be made at least 24 hours in advance with Verdin.

WWW.LSUSPORTS.NET

Information about the Tiger softball team, including player bios, game recaps and notes packets are available online at the Official Website of LSU Athletics, www.LSUsports.net.

LSU softball games that are broadcasted on the radio also can be heard in the Geaux Zone on LSUsports.net. Live streaming video for all home games broadcast on the radio that are not being televised by a national network as part of the SEC on ESPN package.

Live statistics for all games will be carried on LSUsports.net.

MEDIA.LSUSPORTS.NET

Media can now access images for all LSU athletics teams, including action shots, head shots and logos. To gain access to the high-resolution pictures, e-mail Clyde Verdin.

You will be assigned a user name and a password. This service is for media use only. Resale of these images is strictly prohibited.

TIGERS ON TV

LSU will make 10 television appearance during the 2014 season. Every pitch of the SEC Tournament will be carried live on ESPNU and www.WatchESPN.com.

Below is a complete list of the Tigers television appearances which includes games on ESPNU (cable channel 1243), Cox Sports Television (cable channel 1037), FSN (cable channel 1038) and CSS/CST (cable channel 1037).

Date	Opponent	Time	Network	Result
Feb. 6	No. 10 Texas	6 p.m.	CST	L, 1-6
March 15	No. 1 Florida	7 p.m.	CST	W, 2-3
March 16	No. 1 Florida	12 p.m.	CST	L, 2-10 [5]
March 22	at No. 22 Oklahoma	2 p.m.	FSN	L, 1-2
March 23	at No. 22 Oklahoma	12 p.m.	FSN	L, 2-3
March 30	at No. 7 Alabama	1 p.m.	FSN	L, 1-5
April 12	No. 19 Georgia	4 p.m.	CSS/CST	
April 19	at South Carolina	3 p.m.	ESPNU	
April 23	No. 18 South Alabama	6 p.m.	CST	
May 3	Mississippi State	7 p.m.	CST	

TIGERS ON THE RADIO

LSU softball is in its 18th season of radio coverage, as the LSU Sports Network will broadcast 30 regular season games which includes 21 of the team's 24 SEC contests in addition to all postseason games.

The games will be broadcast in the Baton Rouge area on Country Legends 104.9 FM. In addition, the games can be heard live on the internet in the Geaux Zone at LSUsports.net.

Patrick Wright calls the play-by-play action, while Kent Lowe serves as the analyst for home games. Associate SID Matt Dunaway joins Wright for the road contests.

INSIDE LOOK • LSU VS TENNESSEE

LSU RECORD	20-15 [2-7 SEC]
RANKING [NFCA/USA SOFTBALL]	RV/NA
RPI	25
LAST WEEKEND	0-3 [at. Alabama]

HEAD COACH	Beth Torina
OVERALL RECORD	231-167
FEBRUARY	13-6
MARCH	6-9
APRIL	1-0
MAY	0-0
LAST TEN	3-7
STREAK	W-1

TEAM BATTING AVERAGE	.313
TEAM EARNED RUN AVERAGE	2.67

HITTING LEADERS

A.J. Andrews	.389, 44 H, 13 RBI, 24-25 SB-SBA
Bianka Bell	.344, 6 HR, 23 RBI, .635 SLG
Allison Falcon	.326, 31 H, 6 HR, 4 3B, .632 SLG

PITCHING LEADERS

Baylee Corbello	10-5, 2.02 ERA, 12 CG, 100.2 IP, 111 K's
Kelsea Selman	4-2, 2.45 ERA, 3 CG, 40.0 IP, 51 K's

TENNESSEE RECORD	31-3 [8-1 SEC]
RANKING [NFCA/USA SOFTBALL]	2/2
RPI	5
LAST WEEKEND	3-0 [vs Florida]

CO-HEAD COACHES	Ralph and Karen Weekly
OVERALL RECORD	2016-670-4
FEBRUARY	15-1
MARCH	16-2
APRIL	0-0
MAY	0-0
LAST TEN	9-1
STREAK	W-8

TEAM BATTING AVERAGE	.335
TEAM EARNED RUN AVERAGE	1.84

HITTING LEADERS

Madison Shipman	.413, 43 H, 8 HR, 26 RBI
Annie Aldrete	.407, 37 H, 7 HR, 30 RBI
Melissa Davin	.374, 40 H, 11 2B, 32 RBI

PITCHING LEADERS

Ellen Renfroe	21-0, 1.29 ERA, 18 CG, 136.0 IP, 162 K's
Rainey Gaffin	4-2, 1.63 ERA, 1 CG, 30.0 IP, 37 K's

2014 STREAKS, STORYLINES AND SIDEBARS

- LSU enters the weekend 20-15 on the season and 2-7 in SEC play.
- LSU snapped a five-game losing streak with a 14-1 win over the ULM Warhawks in six innings on Tuesday night in Monroe.
- The win in Monroe snapped a five-game road losing streak.
- LSU tied a season high in runs and is the third time this season that the Tigers have scored that many in a contest.
- LSU had 11 hits and is the first time having more than 10 since March 1 against Lamar.
- The Tigers have produced double-digit hits four times in the last ten games.
- The Tigers are 3-0 against Louisiana teams so far this year.
- The Tigers have scored double-digit runs seven times this year and is undefeated when scoring 10 runs or more in a game.
- LSU has either tied or outthit the opponent in seven of the last 10 games.
- LSU hit two home runs against the Warhawks, the first time the team has hit multiple home runs in a game since March 14.
- The Tigers sent 17 batters to the plate in the 11-run fourth inning against ULM.
- Seven different batters earned at least one hit with four earning two against the Warhawks.

From The Batter's Box

- A.J. Andrews has started all 35 games out in center field and has batted in the leadoff position in every start.
- Andrews leads the team with a .389 batting average.
- Her 44 hits are a team-high.
- Andrews is 24-of-25 in stolen bases.
- Has stolen three bases in a game twice this season with four games of at least two.

- Went on a career and season-long 15 game hitting streak.
- Andrews has a team-leading 13 multi-hit games on the season, with nine, two-hit outings and four, three-hit outings.
- Andrews' six at bats against Harvard on Feb. 28 is an individual season high in the Southeastern Conference.
- Hit .375 in the series against Alabama with a double, RBI, run scored and two stolen bases.
- Went 3-for-6 in the series against Oklahoma with a triple, .833 slugging percentage and .625 on-base percentage.
- Drove in a season-high three RBI against Nicholls with a double.
- Averaged .333 at the plate in 12 appearances against No 1 Florida, finishing with four hits and a stolen base.
- Went 2-for-3 in the finale against the Gators with a triple, scoring both runs for the Tigers in the contest.
- Hit .538 against Auburn and Northwestern State, earning seven base knocks with a double, RBI and four runs scored with four stolen bases.
- Went 3-for-4 in the series opener against the Tigers, stealing two bases with a double, RBI and run scored.
- Hit .500 at the Mary Nutter Andrews hit .500 at the Mary Nutter Collegiate Classic with eight hits, which included a double and a triple, with four RBI.
- The four runs driven in were third on the team at the classic. She combined for five hits in nine plate appearances against Cal State Fullerton.
- Bianka Bell is second on the team with a .344 batting average, starting all 35 games at shortstop for the Tigers.
- Bell leads the team with eight doubles and is tied third on the team with six home runs.
- Of Bell's 30 hits, 15 have been for extra bases.

SERIES HISTORY - TENNESSEE

AT A GLANCE [TENNESSEE]

Overall	Tennessee leads 25-20-1
Home	LSU leads 11-10-1
Away	Tennessee leads 14-7
Neutral	LSU leads 2-1
Streak	L-7

GAME-BY-GAME

Date	Result	Location
04/25/97	L, 6-2	Knoxville
04/25/97	W, 3-2	Knoxville
04/24/98	W, 8-0	Baton Rouge
04/24/98	W, 10-1	Baton Rouge
05/09/98	W, 8-1	Columbus, Ga.
04/30/99	L, 3-2	Knoxville
04/30/99	W, 5-0	Knoxville
04/30/00	W, 4-0	Baton Rouge
04/30/00	W, 8-2	Baton Rouge
03/17/01	W, 5-0	Baton Rouge
03/17/01	W, 2-1	Baton Rouge
03/18/01	W, 9-0	Baton Rouge
03/16/02	W, 5-0	Knoxville
03/16/02	L, 4-2	Knoxville
03/08/03	W, 4-0	Baton Rouge
03/08/03	L, 3-2	Baton Rouge
03/09/03	W, 6-1	Baton Rouge
05/08/03	W, 1-0	Plant City, Fla.
03/07/04	W, 2-1	Knoxville
03/07/04	L, 4-0	Knoxville
05/07/05	L, 1-0	Baton Rouge
05/07/05	L, 3-0	Baton Rouge
05/08/05	L, 2-0	Baton Rouge
05/06/06	L, 4-0	Knoxville
05/06/06	L, 10-1	Knoxville

05/07/06	W, 4-0	Knoxville
05/13/06	L, 3-0	Athens, Ga.
04/28/07	L, 2-1	Baton Rouge
04/28/07	W, 5-1	Baton Rouge
Date	Result	Location
04/29/07	W, 3-2	Baton Rouge
04/19/08	L, 8-0	Knoxville
04/19/08	W, 8-2	Knoxville
04/20/08	L, 5-4	Knoxville
04/04/09	L, 2-1	Baton Rouge
04/04/09	L, 7-4	Baton Rouge
04/05/09	T, 3-3	Baton Rouge
05/07/09	L, 6-5	Knoxville
05/08/10	L, 6-5	Knoxville
05/08/10	W, 3-0	Knoxville
05/09/10	L, 6-1	Knoxville
04/15/11	L, 6-0	Baton Rouge
04/16/11	L, 11-0	Baton Rouge
04/17/11	L, 7-2	Baton Rouge
04/13/12	L, 2-0	Knoxville
04/14/12	L, 4-2	Knoxville
04/15/12	L, 10-2	Knoxville

SEC STANDINGS

TEAM	SEC	PCT.	OVERALL	PCT.
Alabama	11 - 1	.916	31 - 5	.861
Tennessee	8 - 1	.889	31 - 3	.911
Auburn	6 - 3	.667	31 - 6	.828
Georgia	6 - 3	.667	30 - 5	.857
Texas A&M	7 - 5	.583	26 - 9	.74
Kentucky	5 - 4	.556	28 - 7	.800
Missouri	4 - 5	.444	26 - 8	.764
Florida	5 - 7	.416	31 - 7	.815
South Carolina	5 - 7	.416	24 - 12	.667
Ole Miss	3 - 9	.250	19 - 18	.513
Arkansas	2 - 7	.222	24 - 14	.631
LSU	2 - 7	.222	20 - 15	.571
Mississippi St.	2 - 7	.222	29 - 10	.743

THIS WEEK IN SEC SOFTBALL - ALL TIMES ARE CENTRAL

Tuesday, April 1

Missouri State at Arkansas	W 9-0
Appalachian St. at Tennessee	Cancelled
Charleston So. at South Carolina	W 9-1 (6)
Presbyterian at South Carolina	W 8-0 (5)
Mississippi State at MVSU	W 13-0 (5)
LSU at UL-Monroe	W 14-1 (5)

Wednesday, April 2

FSU at Florida	L 2-3 (8)
Georgia Tech at Georgia	W 9-7
Louisville at Kentucky	W 5-0
South Alabama at Alabama	W 3-0
Texas A&M at Houston	L 1-2

Friday, April 4

*Auburn at Florida	5 p.m.
*South Carolina at Georgia	5 p.m.
*Texas A&M at Kentucky	5 p.m.
*Tennessee at LSU	6 p.m.
*Missouri at Mississippi State	6 p.m.
*Arkansas at Alabama (ESPNU)	8 p.m.

Saturday, April 5

*South Carolina at Georgia	1 p.m.
*Arkansas at Alabama	2 p.m.
*Texas A&M at Kentucky	2 p.m.
*Missouri at Mississippi State	3 p.m.
*Auburn at Florida (ESPNU)	4 p.m.
*Tennessee at LSU	6 p.m.

Sunday, April 6

*Auburn at Florida	12 p.m.
*Texas A&M at Kentucky (FSN)	12 p.m.
*South Carolina at Georgia	12:30 p.m.
*Tennessee at LSU	12 p.m.
*Missouri at Mississippi State	1 p.m.
*Arkansas at Alabama (ESPNU)	2 p.m.

USA TODAY/NFCA TOP 25 • APRIL 1

RANK	TEAM	RECORD	PTS	PVS
1	UCLA (31)	33-2	799	1
2	Tennessee (1)	31-3	757	3
3	Oregon	30-4	743	2
4	Alabama	31-5	674	7
5	Michigan	25-6	666	6
6	Florida	31-7	625	4
7	Arizona State	32-6	576	11
8	Florida State	33-4	570	9
9	Washington	21-10	567	5
10	Arizona	29-8	495	8
11	South Alabama	29-3	487	12
12	Kentucky	28-7	399	10
13	Baylor	27-6	395	14
14	Minnesota	27-4	390	15
15	Georgia	30-5	337	13
16	Missouri	25-9	304	16
17	Tulsa	32-3	295	18
18	Texas A&M	26-9	278	17
19	Auburn	31-6-1	240	21
20	Nebraska	23-11	217	19
21	Louisiana Lafayette	25-6-1	203	20
22	Oklahoma	24-8	157	22
23	Northwestern	19-8	65	23
24	Stanford	24-11	52	24
25	Notre Dame	20-7	48	25

RV: USC Upstate (24), USF (21), California (3), Houston (3), James Madison (3), **Long Beach State (3)**, N.C. State (2), LSU (1), **Mississippi State (1)**.

Bold - 2014 Opponent; [RV] Receiving Votes

ESPN.COM/USA SOFTBALL TOP 25 • APRIL 1

RANK	TEAM	RECORD	PTS	PVS
1.	UCLA (16)	33-2	493	1
2.	Tennessee (4)	31-3	481	2
3.	Oregon	30-4	451	3
4.	Alabama	30-5	441	5
5.	Michigan	25-6	414	6
6.	Arizona State	32-6	389	8
7.	Florida	31-7	378	4
8.	Florida State	33-4	360	11
9.	Washington	21-10	331	7
10.	Arizona	29-8	328	9
11.	South Alabama	29-3	297	13
12.	Kentucky	28-7	265	10
13.	Baylor	27-6	259	12
14.	Minnesota	27-4	241	15
15.	Oklahoma	24-8	192	16
16.	Tulsa	32-3	191	17
17.	Georgia	30-5	184	14
18.	Missouri	25-9	166	19
19.	Auburn	31-6-1	150	21
20.	Nebraska	23-11	148	18
21.	Texas A&M	25-10	103	20
22.	Louisiana-Lafayette	35-6-1	97	22
23.	Notre Dame	20-7	35	24
24.	Stanford	24-11	31	23
25.	South Florida	29-8	25	25

RV: USC Upstate (24), **Northwestern (11)**, NC State (5), San Diego State (3), Houston (3), **Cal State Fullerton (1)**, California (1), Virginia Tech (1), Stetson (1)

Bold - 2014 Opponent; [RV] Receiving Votes

- Has eight multi-hit games on the season with six, two-hit contests and two, three-hit contests.
- Bell has five games this year with two RBI and one game with three.
- Bell is slugging .635 at the plate which is first on the team.
- Her 61 total bases so far this year lead the team.
- Bell has been walked a 19 times.
- Bell has stolen five of seven bases this season.
- Bell hit four home runs in a span of six games from Feb. 15-21.
- Reached base in 17 consecutive games from Feb. 9-March 4 which is the longest on the team this season.
- Went on an eight-game hitting streak which was a career long and third longest on the team this season.
- Hit her eighth double of the season against Alabama, driving in her 22nd RBI of the season in game three against the Crimson Tide.
- Bell hit .500 against the Oklahoma Sooners with three hits and a walk.
- Went 1-for-3 with a run scored against Nicholls.
- Had two RBI and earned three hits against Florida, which included her team-leading seventh double of the season.
- Was 4-for-6 in the final two games against Auburn, going 2-for-3 in game two with two RBI and a run scored on a double and solo home run.
- Went 3-for-3 against Lamar with a double, triple, RBI and two runs scored.
- Earned three hits in three at-bats against Jackson State with two doubles and three runs scored.
- Went 2-for-2 against Long Beach State at the Mary Nutter Collegiate Classic and scored three times.
- Needed just two at-bats against Penn State to drive in three runs and score twice with a home run.
- Had two hits against Central Arkansas, driving in two and scoring twice with a home run and a walk.
- Bailey Landry has played in 30 games, making 27 starts all in the outfield.
- Is hitting .324, with 23 hits, two for doubles, with seven RBI.
- Has stolen seven bases on eight attempts this season.
- Was on a season-best six-game hitting streak from Feb. 28-March 8.
- Has six multi-hit games on the year.
- Went 2-for-3 against Nicholls with an RBI in the two-spot of the batting order.
- Hit .444 against top-ranked Florida, with four hits and a run scored.
- Went 2-for-3 against Northwestern State with a run scored.
- Had a 2-for-2 day against Penn State with two RBI and a run scored with a double.
- Went 2-for-4 with an RBI against Central Arkansas.
- Landry went 2-for-2 with two RBI and a run scored against Murray

- State.
- Allison Falcon is hitting .326 on the season with 31 hits and 20 RBI
- Falcon has played in all 35 games, earning 34 starts with 30 coming at second base.
- Falcon has four triples on the year which leads the Southeastern Conference.
- She accounts for a little under half of the team's 11 triples this year.
- Falcon has 11 multi-hit games, with ten two-hit games and one three-hit contest.
- Her six home runs are tied for third on the team.
- Falcon is second on the team with a .632 slugging percentage.
- Is one of just five players this season to have four RBI in a game, with five multi-RBI games to her credit this year.
- Has hit six long balls this season, including hitting the first grand slam of the year for the team.
- Has struck out just eight times this season.
- Is one of three players this year in the SEC with two triples in a single game.
- Went 2-for-3 with a home run, RBI and two runs scored against ULM
- Had two hits in seven at-bats against the Sooners.
- Went 2-for-2 with an RBI and run scored against Nicholls.
- Hit .500 for the team in the series against UF, being two of four players to earn four hits on the weekend.
- Went 4-for-8 with two RBI and two runs scored against Florida.
- Had three doubles and a home run to her credit, finishing with a slugging percentage of 1.250.
- In game two alone, Falcon had two, two-baggers and hit the solo home run that gave LSU a 3-0 lead which the team held on to for the win.
- Tripled against Auburn in the series opener, scoring once in the 4-1 win over the Tigers.
- Went 2-for-3 against Stanford, with two RBI and a run scored as her home run began the comeback for LSU against the Cardinal.
- Was 2-for-3 against Cal State Fullerton, earning a triple in the win over the Titans.
- Only hit against Washington was a solo home run in the win over the Huskies
- Went 2-for-4 against Penn State in the second game of a doubleheader with a run scored.
- Became the first player since 2004 to hit two triples in a single game in game one against Penn State, going 2-for-2 with three RBI and a run scored.
- Helped close out the game against George Washington with the team's first grand slam home run and second in consecutive games on a 2-for-2 night with two runs scored.
- Had two hits in three at-bats against Northwestern with a home run, RBI and run scored against the Wildcats.
- Was perfect in two at-bats against Murray State scoring twice and

TIGERS IN THE POLLS

USA TODAY/NFCA TOP 25

Preseason	No. 17 [269]
Feb. 11	No. 21 [179]
Feb. 18	No. 23 [118]
Feb. 25	No. 22 [146]
March 4	No. 24 [77]
March 11	RV [25]
March 18	RV [22]
March 25	RV [2]
April 1	RV [1]
April 8	
April 15	
April 22	
April 29	
May 6	
May 13	
Final	

ESPN.COM/USA SOFTBALL

Preseason	No. 19 [150]
Feb. 11	No. 21 [102]
Feb. 18	No. 23 [69]
Feb. 25	No. 21 [103]
March 4	No. 23 [67]
March 11	No. 25 [27]
March 18	RV [20]
March 25	RV [8]
April 1	NA
April 8	
April 15	
April 22	
April 29	
May 6	
May 13	
Final	

LSU MULTI-HIT GAMES

PLAYER	2	3	4+	SEASON	CAREER
A.J. Andrews	9	4	-	13	39
Jacee Blades	4	3	1	8	33
Allison Falcon	10	1	-	11	30
Bianka Bell	6	2	-	8	25
Simone Heyward	1	-	-	1	22
Sandra Simmons	9	-	-	9	19
Tammy Wray	2	-	-	2	16
Kellsie Kloss	7	1	-	8	12
Bailey Landry	6	-	-	6	6
Sahvanna Jaquish	6	1	-	7	7
Dylan Supak	-	-	-	0	5
Kailey McCasland	-	-	-	0	3
Alex Boulet	-	-	-	0	1
Hailey Smith	-	-	-	-	1

LSU MULTI-RBI GAMES

PLAYER	2	3	4+	SEASON	CAREER
Bianka Bell	5	1	-	6	19
Allison Falcon	3	1	1	5	19
A.J. Andrews	4	1	-	5	15
Tammy Wray	1	-	-	1	14
Sandra Simmons	3	-	2	5	13
Kellsie Kloss	2	1	1	4	10
Sahvanna Jaquish	1	5	1	7	7
Jacee Blades	2	-	-	2	6
Dylan Supak	-	-	-	0	6
Bailey Landry	2	-	-	2	2
Constance Quinn	2	-	-	2	2
Simone Heyward	-	1	-	1	2
Kailey McCasland	-	-	1	1	2

LSU HITTING STREAKS

PLAYER	SEASON	CURRENT	CAREER
A.J. Andrews	15	-	15
Jacee Blades	9	1	9
Bianka Bell	8	3	8
Allison Falcon	5	1	8
Sandra Simmons	4	3	7
Kellsie Kloss	6	-	6
Bailey Landry	6	-	6
Tammy Wray	2	1	6
Sahvanna Jaquish	5	1	5
Simone Heyward	5	1	5
Constance Quinn	4	-	4
Hailey Smith	3	-	3
Kailey McCasland	1	1	3
Baylee Corbello	2	-	2
Alayna Falcon	2	-	2
Alex Boulet	1	-	2

driving in one.

- Drove in two on just one hit against SIUE.
- Jacee Blades has started 34 games in left field for the Tigers and has a .323 batting average.
- Blades is third on the team with 32 total hits, with one triple and nine RBI.
- Blades has stolen eight bases on 11 total attempts this season.
- Has earned eight multi-hit games on the year, and is the only player to earn four hits in a game this season.
- Blades has seven sacrifice hits on the year which leads the team.
- At one point was hitting .448 on the season which is the highest at any point for any player on the team this year.
- Went on a nine-game hitting streak which was a career-long.
- Went 2-for-2 with a run scored against ULM.
- Hit .667 over the course of seven games, racking up 16 hits, three RBI and seven runs scored with two stolen bases from Feb. 17-22.
- Went 3-for-4 against Stanford with an RBI and run scored
- Accounted for all but two hits against the Oregon Ducks, going 4-for-4 which was a career-high for hits in a single game.
- Scored twice against Long Beach State with a 1-for-3 day at the plate.
- Blades was a combined 5-for-5 in two games against Penn State with a triple, RBI and three runs scored against the Nittany Lions.
- Was 3-for-4 against South Alabama with a run scored and two stolen bases. Swiped two more bags against George Washington.
- Went 1-for-4 against Murray State with two RBI and 1-for-2 with two runs driven in and two sacrifice hits against SIU Edwardsville.
- Sandra Simmons is batting .323 on the season and has 31 total hits.
- Simmons has started all 35 games at first base and has a .989

fielding percentage.

- Simmons has three doubles a triple and three home runs on the year.
- She has nine, two-hit games this year.
- Has hit below .300 just three times this season.
- Is tied for second on the team in RBI with 23, as she is the only player this season with two games of four RBI.
- Simmons is 3-for-3 in stolen bases.
- Earned two hits for the third straight game going 2-for-2 with a double, RBI and season-high three runs scored against ULM.
- Hit .400 and was one of two players to earn four hits against Alabama on the weekend.
- Had back-to-back two-hit games against Alabama, accounting for half of LSU's hits in the finale.
- Was walked a season high three times against Nicholls, earning six on the week when including the Oklahoma series.
- Went 2-for-3 in the finale against Auburn.
- Went 2-for-2 with two runs scored and drove in four RBI for the second time with a three-run home run.
- Had a 2-for-3 day against Iowa State, driving in the game-winning run on her final hit of the game.
- Went 1-for-4 against Washington with two RBI.
- Did not garner a hit against Penn State but had two RBI with two sacrifice flies
- Had a 2-for-3 day against George Washington with two RBI and two runs scored with a home run.
- Came in twice and drove in one on two hits against Central Arkansas
- Solo home run proved to be the difference in the Oklahoma State game as LSU defeated the Cowgirls 1-0.

RPI REPORT - AS OF 03/30/14

Overall Ranking	25 [19-15]
Record vs. RPI 1-25	4-12
Home	2-4
Away	1-7
Neutral	1-1
Record vs. RPI 26-50	3-1
Home	0-1
Away	0-0
Neutral	3-0
Record vs. RPI 51-100	2-0
Home	2-0
Away	0-0
Neutral	0-0
Record vs. RPI 101-150	2-1
Home	2-1
Away	0-0
Neutral	0-0
Record vs. RPI 151 +	8-1
Home	6-1
Away	2-0
Neutral	0-0

OPPONENT RPI

SEC	RANK [RECORD VS.]
Alabama	1 [0-3]
Georgia	2 [0-0]
Tennessee	5 [0-0]
Florida	4 [1-2]
Missouri	8 [0-0]
Texas A&M	11 [0-0]
Kentucky	18 [0-0]
Auburn	19 [1-2]
LSU	25
South Carolina	33 [0-0]
Mississippi State	39 [0-0]
Ole Miss	76 [0-0]
Arkansas	85 [0-0]

NON-CONFERENCE	RANK [RECORD]
South Alabama	10 [0-1]
Minnesota	15 [0-1]
Oregon	16 [0-1]
Washington	22 [1-0]
Oklahoma	23 [0-2]
Northwestern	24 [1-0]
Texas	34 [0-1]
Stanford	42 [1-0]
Long Beach State	43 [1-0]
Cal State Fullerton	44 [1-0]
Oklahoma State	53 [1-0]
Murray State	100 [1-0]
SIU Edwardsville	102 [1-0]
Iowa State	116 [1-0]
Harvard	146 [0-1]
Northwestern State	156 [1-0]
Penn State	175 [1-1]
Central Arkansas	183 [1-0]
Lamar	201 [1-0]
George Washington	214 [2-0]
Nicholls	230 [1-0]
Jackson State	239 [1-0]

2014 COMEBACK WINS

MURRAY STATE - FEB. 8 - W, 10-2

- The Tigers picked up their first comeback win of the season, coming back from a two-run deficit to run-rule the Murray State Racers after scoring 10 unanswered runs to win in five.
- Walks to Allison Falcon and Hailey Smith put two on for LSU, with Bailey Landry loading the bases on an infield single.
- A.J. Andrews singled to score Falcon, while a RBI grounder by Jacee Blades tied the game at two in the bottom of the second.
- Kellsy Kloss earned a two-out double to left center, as Falcon followed suit to score Kloss and give LSU its first lead up 3-2.
- The Tigers scored six runs on six hits in the fourth for a total of nine runs in three innings, as the game ended with a Constance Quinn double and Landry hit to ice the contest

CAL STATE FULLERTON - FEB. 21 - W, 8-1

- LSU picked up another comeback win of the season, exploding for eight runs in the fifth inning to defeat the Cal State Fullerton Titans 8-1 at the Mary Nutter Collegiate Classic.
- The Tigers had just two players reach base through four innings and a single hit, LSU earned ten hits in the next two innings against two Fullerton pitchers.
- LSU went through the entire lineup in the fifth, as the team got a two-RBI triple from A.J. Andrews to give the team its first lead, while Bianka Bell earned a two-RBI double to extend it.
- The inning was capped by a three-run home run by Savannah Jaquish to make it 8-1 as LSU earned eight runs on eight hits in the fifth alone.

STANFORD - FEB. 22 - W, 5-3

- LSU picked up its second comeback win of the weekend, scoring four unanswered runs in the sixth and seventh to defeat No. 13 Stanford to close the Mary Nutter Collegiate Classic.
- Trailing 3-1, Allison Falcon hit her fourth home run of the season, a solo shot, to make it 3-2 in the top of the sixth.
- Simone Heyward led off with a single through the left side and was followed by a bunt single by A.J. Andrews with Heyward advancing to third to put runners at the corners.
- Jacee Blades hit an infield single as Heyward slid in under the tag to tie the game.
- Consecutive walks to Sandra Simmons and Bianka Bell scored another to make it 4-3, while Savannah Jaquish got hit to make it 5-3.

NORTHWESTERN STATE - MARCH 4 - W, 5-3

- After giving up three runs in the first two innings, the LSU Tigers scored five runs in final three innings to defeat the Lady Demons in Natchitoches.
- Bailey Landry singled to open the Tiger fifth, with an error and walk putting A.J. Andrews and Jacee Blades on to load the bases. A grounder by Sandra Simmons and fielder's choice by Bianka Bell plated two runs as LSU tied the game.
- In the next at bat, Kellsy Kloss took an 0-2 pitch over the fence in left to put LSU up 4-3 for the team's first lead of the day.
- Kloss came back in the seventh inning and gave LSU an insurance run by driving in Andrews who reached earlier with a single to make it 5-3.

AUBURN - MARCH 7 - W, 4-1

- A.J. Andrews earned three of LSU's five hits on the day as the Tigers opened SEC play with a 4-1 comeback win over Auburn to start the series.
- Andrews drove in the game-tying run and scored the go-ahead run in the sixth inning to give LSU a lead it would not relinquish.
- Bailey Landry doubled to left and Andrews continued with a shot of her own to tie the game at 1-1.
- After moving to third on a sacrifice bunt by Jacee Blades, a fielder's choice by Sandra Simmons allowed Andrews to get in under the tag and give LSU the lead up 2-1.
- Simmons moved to second on a grounder, as Kellsy Kloss forced an error at short to allow Simmons to score making it 3-1.
- The final run came by virtue of a sacrifice fly by Corbello, driving in Allison Falcon who tripled.

- Drove in four for the first time this season, using just one hit, a double, to help defeat SIUE.
- Hit LSU's first triple of the season against Texas in the opener.
- Kellsy Kloss is hitting .292 in 33 games this year.
- Kloss has started all but three games either as the catcher or designated player.
- Kloss has 26 hits on the season with five doubles and is second on the team in home runs with seven.
- She is slugging .584 on the season.
- Kloss is one of four players to drive in four runs in a game this season.
- Kloss has eight multi-hit outings.
- Averaged a team-high .444 against Alabama, earning four hits with an RBI and run scored with a .444 on-base percentage and slugging .778.
- Kloss has hit two of the last five LSU home runs.
- Hit seventh home run of the season in the series opener against the Crimson Tide.
- Hit her sixth home run of the season on a back-to-back in the series opener against Florida.
- Hit the go-ahead two-run home run in the 5-3 comeback win over Northwestern State, going 2-for-3 with three RBI.
- Went 2-for-2 with two RBI and two runs scored in the shutout win over Jackson State.
- Had a monster day going 2-for-4 against Long Beach State where she had four RBI with two runs scored on a double and home run.
- Was 2-for-4 in the finale against Penn State, with a double and an RBI.
- Opened the Penn State doubleheader with a 3-for-3 outing with an RBI and three runs scored with a home run.
- Had two hits against South Alabama.
- Hit a two-run bomb against Northwestern with a run scored.
- Went 2-for-4 against Murray State with a double, RBI and two runs scored against the Racers.
- Savannah Jaquish has started all 35 games either at catcher or designated player.
- Jaquish leads the team with nine home runs on the season.
- She leads the team with 30 RBI, and has seven multi-RBI games with one four-RBI contest and five three-RBI games.
- Jaquish is hitting .290 on the season and also has three doubles.
- Behind the plate, Jaquish sports a .981 fielding percentage.
- Jaquish has only struck out nine times, which is the second-lowest amount for the everyday starters.
- Went on a five-game hitting streak from Feb 7-14.
- Jaquish has hit four of the last ten home runs for LSU.
- Jaquish has hit five of her nine home runs as the leadoff batter in an inning.
- Also went 4-for-8 and hit two home runs in a game for the second time in her last three in the series opener against the Gators.
- Became the first player since Tammy Wray last season to hit two home runs in a single game with two solo home runs in game two against Auburn where she went 3-for-4 with two RBI and two runs scored.
- Hit the second grand slam of the season against Lamar which accounted for her only hit of the game.
- Hit a three-run bomb in a rout of Jackson State in her only hit of the contest.
- Went 2-for-3 against Harvard.
- Had a 2-for-3 game against Cal State Fullerton, driving in three runs with a run scored and a home run versus the Titans.
- Was 1-for-3 against Long Beach State, driving in three RBI against the 49'ers.
- Hit the second of her two doubles during the Tiger Invitational weekend going 1-for-4 against Penn State with an RBI and run scored.
- Hit her first double of the season in a 2-for-3 outing against George Washington.
- Scored her first home run of the season against Central Arkansas for her only hit of the game against the Bears.
- Went 2-for-2 with three RBI against SIU Edwardsville.

- Tammy Wray has played in 33 games with 29 starts all coming at third base.
- Wray has a .963 fielding percentage at third this season.
- Had two hits in a game for the second time this season going 2-for-2 with a double and season-high two RBI against ULM and a run scored.
- Went 1-for-4 with an RBI, as she played solid defense all weekend with five putouts and seven assists against Florida.
- Went 1-for-3 against Lamar in the final game of the Purple and Gold Challenge
- Best game at the plate was a 2-for-3 outing against Washington with an RBI and run scored, connecting on a home run.

Off The Bench

- Simone Heyward Has appeared in 26 games, making nine starts in the outfield.
- Heyward is hitting .241 with seven hits on the season, three RBI and five runs scored.
- Heyward is 5-for-6 on stolen bases.
- Went 2-for-3 against Stanford with a run scored.
- Was 1-for-1 against Cal State Fullerton.
- Heyward connected on a bases-clearing, three-RBI triple against George Washington.
- Alex Boulet
- Alex Boulet has appeared in 18 games as a pinch runner for the Tigers.
- Has stolen three bases this season with three runs scored on the season.
- Went 1-for-2 against George Washington with an RBI.
- Constance Quinn has made 16 appearances on the year with four starts.
- Quinn has eight hits on the season with a double, five RBI and three runs scored in 20 plate appearances.
- Had a four-game hitting streak from Feb. 7-14.
- Has seven games with at least one hit.
- Hit the first home run of her career in the finale against Oklahoma, driving in two runs for the second time this season.
- In her only at-bat of the game, drove in a career-high 2 RBI with a run scored against Nicholls.
- Quinn had the game-tying hit in the bottom of the seventh in game one after Florida stormed back, as she played in two games and had a stolen base.
- Had an RBI against George Washington.
- Garnered a hit in her only at-bat against George Washington in game one.
- Went 1-for-1 with a double and run scored against Murray State.
- Baylee Corbello has made 13 starts in the batting order for LSU.
- Corbello has five hits on the season with a double and three runs scored.
- Has been walked five times this season.
- Hailey Smith has played in nine games making six starts at third base.
- Smith is hitting .286 with four hits, an RBI and two runs scored with a stolen base.
- Went 1-for-2 against Auburn, earning a single in the final inning of the game.
- Scored once with two walks against George Washington.
- Was 1-for-1 with an RBI against Central Arkansas.
- Smith was 1-for-1 with a run scored against Murray State.
- Was 1-for-3 in the opener against Texas.
- Alayna Falcon has appeared in six games as a pinch hitter and outfielder.
- Falcon has two hits in four at-bats with a run scored.
- Went 1-for-1 in her only at bat against Lamar.
- Falcon scored after going 1-for-1 against George Washington.
- Kailey McCasland has appeared in six games as a pinch runner, pinch hitter and first baseman.
- McCasland is 2-for-5 on the season with six RBI and two runs scored.
- Hit the third grand slam of the season against ULM as a pinch hitter to earn a career-high four RBI against the Warhawks.

2014 LSU NCAA RANKINGS (TEAM)

CATEGORY	NAT'L RANK	CONF RANK	VALUE
Batting Average	36	7	0.310
Double Plays per Game	114	6	0.29
Doubles per Game	213	13	0.94
Earned Run Average	58	9	2.70
Fielding Percentage	57	9	0.967
Home Runs per game	42	9	0.94
Scoring	83	10	4.94
Slugging Percentage	40	8	0.479
Stolen Bases per Game	9	1	2.06
Triples per Game	13	2	0.32
WL Percentage	102	12	0.55

As of 3/30/14

2014 LSU NCAA RANKINGS (PLAYERS)

CATEGORY	NAT'L RANK	CONF RANK	VALUE
Batting Average			
A.J. Andrews	103	13	0.400
Earned Run Average			
Baylee Corbello	100	14	2.08
Kelsee Selman	150	18	2.39
Hits Allowed Per Seven Innings			
Kelsee Selman	7	1	3.13
Baylee Corbello	42	10	4.52
Home Runs Per Game			
Sahvanna Jaquish	39	5	0.26
Kellsie Kloss	128	16	0.22
Home Runs			
Sahvanna Jaquish	39	5	9
Kellsie Kloss	88	16	7
RBI Per Game			
Sahvanna Jaquish	139	21	0.85
Sacrifice Flies			
Sandra Simmons	21	2	3
Sacrifice Hits Per Game			
Jacee Blades	87	3	0.21
Shutouts			
Baylee Corbello	23	3	5
Kelsee Selman	109	13	2
Stolen Bases Per Game			
A.J. Andrews	17	2	0.71
Strikeouts			
Baylee Corbello	73	5	106
Strikeouts Per 7 Innings			
Kelsee Selman	32	3	8.7
Baylee Corbello	78	9	7.6
Triples			
Allison Falcon	8	1	4
A.J. Andrews	29	3	3
Triples Per Game			
Allison Falcon	31	1	0.12
A.J. Andrews	83	3	0.09

As of 03/30/14

- Had a fielder's choice RBI to give LSU an 8-0 lead over Nicholls.
- Was 1-for-1 against Long Beach State with an RBI single.
- Crossed the plate against SIU Edwardsville.
- Layna Savoie has seen action in eight games as a pinch hitter and pinch runner.
- Savoie has stolen three bases on the season, coming against Lamar and Northwestern.
- Dylan Supak has appeared in three games as a pinch hitter and outfielder, earning two at bats on the season.

In The Circle

- Baylee Corbello as made 16 starts, all in the circle for the Tigers which leads the team with a 10-5 record.
- Leads the staff with 100.2 innings pitched, 2.02 earned run average and 111 strikeouts.
- Has 12 complete-game outings and nine complete-game victories.
- Has five shutouts which is a team-high.
- Was named the first SEC Freshman of the Week and the LSWA Pitcher of the Month for the start of the season.
- Corbello has given up a run or less in 11 games this season.
- Has held teams to two hits or fewer in eight games.
- In three innings against ULM, allowed no runs on two hits with four strikeouts and no walks in earning her 10th victory of the season.
- Gave up one run on four hits with three walks and three strikeouts in four innings of relief in game three against Alabama.
- Allowed a season high nine runs, eight earned, on eight hits in the loss to Alabama in game one of the series.
- Had a no-hitter through five innings in the opener against Oklahoma, finishing the game allowing two runs on four hits with five walks and five strikeouts.
- Nearly tossed a perfect game against Nicholls, holding the Colonels to one hit with 12 strikeouts for her fourth double-digit strikeout performance of the season.
- Pitched two innings of relief in the finale against Florida, allowing an unearned run with two strikeouts.
- Gave up a season high six runs on five hits with nine walks on 193 pitches in the series opener against the Gators. Earned double-digit strikeouts for the third time this season, fanning 11.
- Allowed five runs on four hits, snapping a six-game winning streak in starts in the finale against Auburn.
- Held Auburn to just one run on two hits with eight strikeouts to open the series to earn her eighth win of the season.
- Earned her fourth shutout of the season in scattering six hits with four walks and five strikeouts against Iowa State.
- Allowed a season-high seven hits, but held Stanford to only three runs in a 5-3 comeback win for LSU.
- Gave up a single run to Cal State Fullerton on six hits with seven walks in an 8-1 win over the Titans.
- Struck out six and held Long Beach State to just two hits in a 5-0 win over the 49ers.
- Allowed three runs to Penn State with seven walks and four strikeouts on just two hits in an 11-3 win.
- Suffered the loss against South Alabama allowing two runs, one earned, on five hits with seven strikeouts.
- Earned her second consecutive shutout with a blanking of Northwestern on four hits with eight strikeouts against the Wildcats.
- Carried a no-hitter into the sixth inning against Oklahoma State, as she finished the game striking out 13 batters which is tied for third-most by a freshman pitcher in team history.
- Became the fourth freshman hurler to earn double-digit strikeouts in their first start at LSU, fanning 10 Minnesota batters and retiring 21 of the last 23 in a 1-0 loss to Minnesota.
- Kelsee Selman has made 13 appearances with six starts on the season.
- Is 4-2 on the season with a 2.45 ERA.
- Combined to go on a 20.0 inning shutout streak over four-plus games.
- Was named the SEC Pitcher of the Week after the Purple and Gold Challenge where she gave up three hits in 11 innings of work with

- 16 strikeouts.
- Named to the Purple and Gold Challenge All-Tournament team and MVP.
- Became the 34th pitcher in team history to throw a no hitter, and the first since 2001 to do it in only six innings.
- Pitched the final two innings against the Warhawks, allowing one run on no hits with three walks and four strikeouts, earning three in the final inning by retiring the side.
- Pitched a third of an inning, allowing two hits on Friday against Alabama.
- Took both losses against Florida after giving up four runs on three hits with two walks and a strikeout in 0.2 innings of work.
- Allowed two runs on a home run to snap her scoreless streak in the finale against Auburn.
- Pitched the final 2.2 innings in game two against Auburn with two walks and a strikeout.
- Earned the win in relief against Northwestern State going the final 4.2 innings, giving up one hit with four walks and two strikeouts.
- Shutout Lamar with seven strikeouts and holding the Lady Cardinals to just three hits.
- No-hit Jackson State after walking the first batter of the first inning then retiring the rest with nine strikeouts.
- Pitched four innings against George Washington allowing four runs on three hits with six walks and seven strikeouts.
- Struck out 13 Central Arkansas batters to earn the first win of her collegiate career.
- Gave up two runs in 1.2 innings against Murray State with five walks and two strikeouts.
- Pitched two innings of relief in her first action at LSU, with a walk and a strikeout against Texas.
- Ashley Czechner has appeared in 17 games with 13 starts in her senior season.
- Czechner is 6-8 on the season with a 3.56 earned run average.
- Won three-straight from Feb. 7-15 after suffering the loss in the season opener to Texas.
- Pitched an SEC individual season-high 12 innings against Harvard.
- Was named to the Purple and Gold Challenge All-Tournament team.
- Czechner has struck out six batters in a game three times this season and has eight games with no less than four strikeouts.
- Earned the loss in games two and three to Alabama, as two unearned runs crossed the plate in game two, as she gave up four runs on Sunday in the finale.
- Suffered the loss to OU after allowing three runs, two earned, on six hits with four strikeouts and three walks with an error.
- Snapped a three-game losing streak after earning the only win of the weekend as she held Florida to just two runs in a complete-game victory
- Came on in relief against Murray State and held the Racers to two hits with two strikeouts in earning the victory.

2011 SEASON SERIES
NO. 10 TENNESSEE 2, NO 22 LSU 0 - 4/13

KNOXVILLE, Tenn. - The No. 22 LSU softball team dropped a 2-0 decision to No. 10 Tennessee during a SEC series opener Friday evening in front of 1,514 fans at Lee Stadium.

A.J. Andrews, Ashley Langoni and Morgan Russell provided the hits for the Tigers (29-11, 11-4 SEC), but Tennessee's (33-9, 14-6 SEC) Ellen Renfroe produced her NCAA-leading 14th shutout of the season. She notched five strikeouts versus two walks to improve her ledger to a 22-3 mark in 2012.

"It was everything we were expecting it to be," head coach Beth Torina said. "Both teams have great pitching, and we were expecting runs to be hard to come by. In order to beat Tennessee, we have to play our best softball. There's no doubt that tonight's game was very far from our best softball. This team is capable of a lot more, and I've asked them to come back with an better answer tomorrow because our goal is to still win this series."

Reigning SEC Player of the Week, Madison Shipman, put the Lady Vols on the scoreboard with a solo home run down the left field line during the second inning.

Tennessee tacked on an insurance run in the fifth inning. Raven Chavanne and Kat Dotson produced consecutive bunt singles, while Shipman and Sheby Burchell coaxed walks to make it 2-0.

LSU's best opportunity to score came during the sixth inning. Andrews chopped an infield single and stole second base. It was Andrews' team-leading 10th stolen base of the season.

Two batters later, Juliana Santos ripped a one-hopper up-the-middle that was fielded by a diving Shipman from the shortstop position. She threw from her knees to get Santos by a step and preserve the 2-0 shutout for Tennessee.

The Lady Vols have won 11 of the last 14 meetings over LSU in the series dating back to the 2008 season.

Rachele Fico had her run of seven straight wins dating back to March 16 come to a close. She notched six strikeouts but matched a career-high with six walks. The junior right-hander stranded 11 Tennessee baserunners, but fell to 14-5 on the season. In her five losses, Fico has received one total run of support.



2012 LSU Softball
#22 LSU at #10 Tennessee
Apr 13, 2012 at Knoxville, Tenn. (Lee Stadium)



LSU 0 (29-11,11-4 SEC)

Tennessee 2 (33-9,14-6 SEC)

Player	ab	r	h	rbi	bb	so	po	a	lob
A.J. Andrews cf	3	0	1	0	0	1	0	0	0
Jacee Blades rf	3	0	0	0	0	1	1	0	0
Ashley Langoni lf	2	0	1	0	1	1	1	0	0
Juliana Santos ss	3	0	0	0	0	0	3	2	2
Allison Falcon 2b	3	0	0	0	0	1	4	0	1
Ashley Applegate dp	3	0	0	0	0	0	0	0	0
Tammy Wray 3b	2	0	0	0	1	0	1	2	0
Morgan Russell c	2	0	1	0	0	1	6	1	0
Alex Boulet pr	0	0	0	0	0	0	0	0	0
Ashleigh Kuhn 1b	2	0	0	0	0	2	0	1	0
Rachele Fico p	0	0	0	0	0	0	0	0	0
Totals	23	0	3	0	2	5	18	5	4

Player	ab	r	h	rbi	bb	so	po	a	lob
Raven Chavanne 3b	4	1	3	0	0	0	1	3	0
Kat Dotson rf	3	0	1	0	0	0	1	0	0
Lauren Gibson 2b	2	0	0	0	2	0	2	1	0
Madison Shipman ss	3	1	1	1	1	0	1	1	3
Cheyenne Tarango dp	3	0	0	0	2	0	0	0	2
Shelby Burchell lf	0	0	0	1	3	0	1	0	0
Holly Baker pr/lf	0	0	0	0	0	0	0	0	0
Whitney Hammond lf	0	0	0	0	0	0	1	0	0
Melissa Brown 1b	2	0	1	0	0	0	8	0	3
Ashley Andrews c	1	0	0	0	0	1	6	1	0
Cat Hosfield ph	1	0	0	0	0	1	0	0	0
Tory Lewis cf	3	0	0	0	2	0	0	0	3
Ellen Renfroe p	0	0	0	0	0	0	0	1	0
Totals	22	2	6	2	6	6	21	7	11

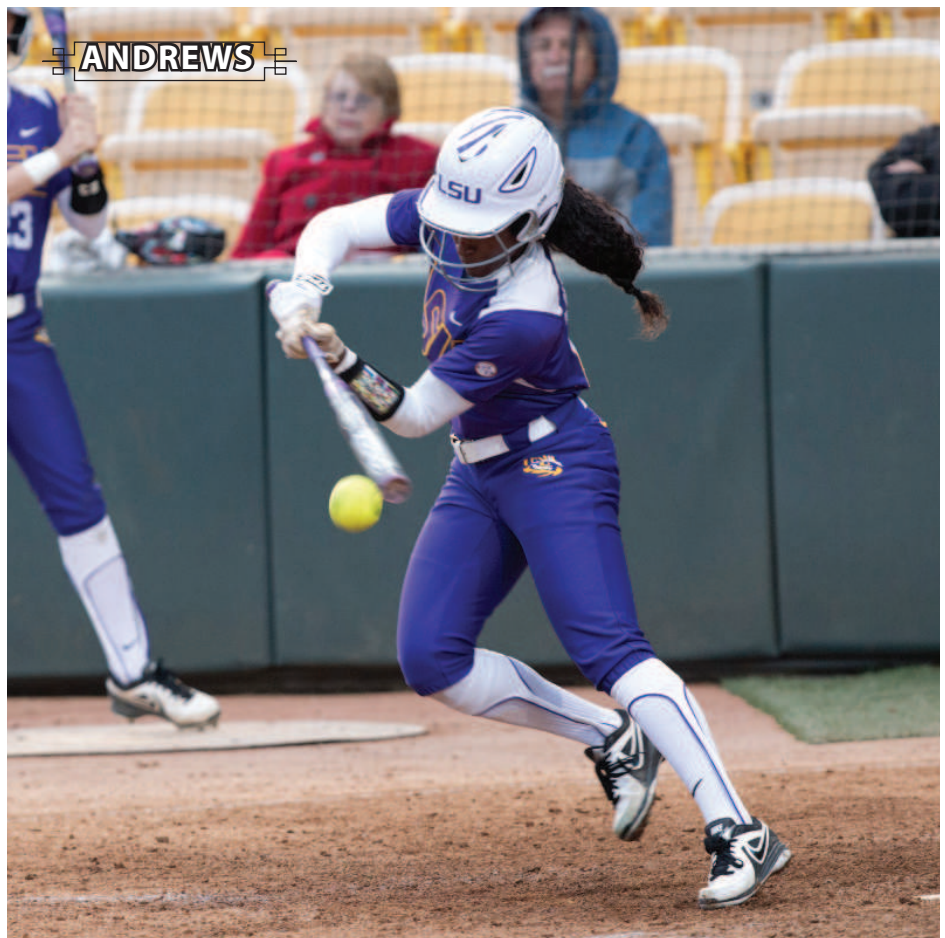
Score by Innings	1	2	3	4	5	6	7	R	H	E
LSU	0	0	0	0	0	0	0	0	3	0
Tennessee	0	1	0	0	1	0	X	2	6	0

LOB - LSU 4; Tennessee 11. HR - M. Shipman(9). HBP - K. Dotson; A. Andrews. SH - M. Brown(3). SB - Andrews(10); R. Chavanne(21). CS - Boulet(1); L. Gibson(3).

LSU	ip	h	r	er	bb	so	ab	bf	np	Tennessee	ip	h	r	er	bb	so	ab	bf	np
Rachele Fico	6.0	6	2	2	6	6	22	31	111	Ellen Renfroe	7.0	3	0	0	2	5	23	25	106

Win - E. Renfroe (22-3). Loss - Fico (14-5). Save - None.
 HBP - by Fico (A. Andrews); by Fico (K. Dotson). Inherited runners/scored: None. Pitches/strikes: Fico 111/58; E. Renfroe 106/66.

Umpires - HP: Christie Cornwell 1B: Willie Newman 3B: Shelley Mangrum
 Start: 6:04 pm Time: 1:50 Attendance: 1514
 Weather: 69 sunny; ESE 4 mph



2011 SEASON SERIES
NO 10 TENNESSEE 4, NO 22 LSU 2 • 4/14

KNOXVILLE, Tenn. - The No. 22 LSU softball team put up two runs during the seventh inning, but lost a 4-2 decision to No. 10 Tennessee in the middle game of a SEC series Saturday as 1,609 fans gathered at Lee Stadium.

The Tigers (29-12, 11-5 SEC) were able to bring the tying run to the plate, but Tennessee's Ellen Renfro recorded back-to-back strikeouts from the bullpen to record her third save of the game.

Ashley Applegate ignited the rally with a one-out walk followed by pinch hitter Kailey McCasland's single to left field. After the Lady Vols (34-9, 15-6 SEC) made the pitching change, Tammy Wray jumped on the first offering and cranked a RBI single to cut the LSU deficit down to 4-1.

With runners on the corners, pinch runner Simone Heyward and McCasland executed a double steal to perfection to bring LSU back to 4-2.

"Our offense did a good job of continuing to battle," head coach Beth Torina said. "I felt a lot different than I did after last Sunday's game at Alabama. I was happy that we continued to fight hard, and we showed that by scoring in the seventh inning. Alex, Kailey and Simone all did a great job of coming in off the bench and stepping up. Those kids are so anxious to get into the game when their number was called, and I was happy to see them all bring positive things to the inning. Hopefully, we'll be able to carry those things into tomorrow's game."

Ivy Renfro fired six innings of no-hit ball and tallied three strikeouts against four walks. She improved to 12-6 on the season. Tennessee has emerged with wins during 12 of the last 15 meetings in the series with the Tigers dating back to the 2008 season.

The Lady Vols garnered all four of their runs in the first inning. Raven Chavanne and Kat Dotson sparked the frame with a walk and a bunt single. In a matter of two pitches, Madison Shipman and Lauren Gibson smoked consecutive RBI singles through the right side to vault Tennessee to a 2-0 edge.

With runners on second and third base, the Lady Vols crossed the plate with their third run via a Brittany Mack wild pitch. Melissa Brown added a RBI ground out to make it 4-0.

Mack would settle in to post five consecutive zeroes and scatter four hits the rest of the way. The senior right-hander picked up five strikeouts versus one walk. She was dealt her third straight setback and fell to 12-7 for the season.

"I wish we would have been able to stop the bleeding earlier in that first inning," Torina said. "Brittany did an excellent job of keeping the Tennessee hitters off-balanced after the first inning, but I wish she could have made some better pitches to start the game. One-run, two-run innings we can bounce back from, but four-run innings are really hard to have an answer for. When I went out to the mound to try and change the momentum down 2-0, I felt that if someone could have stepped up at that point then we could have been in a tie ball game at the end of it."



2012 LSU Softball
#22 LSU at #10 Tennessee
Apr 14, 2012 at Knoxville, Tenn. (Lee Stadium)



LSU 2 (29-12, 11-5 SEC)

Tennessee 4 (34-9, 15-6 SEC)

Player	ab	r	h	rbi	bb	so	po	a	lob
A.J. Andrews cf	3	0	0	0	1	1	2	0	2
Jacee Blades rf	2	0	0	0	0	0	0	0	0
Ashley Langoni lf	2	0	0	0	1	0	1	0	1
Juliana Santos ss	3	0	0	0	1	0	2	0	0
Allison Falcon 2b	2	0	0	0	0	0	1	2	0
Cassie Trosclair 2b	1	0	0	0	1	1	0	0	0
Ashley Applegate dp	2	0	0	0	1	0	0	0	0
Alex Boulet pr	0	1	0	0	0	0	0	0	0
Lauren Houston c	1	0	0	0	1	0	5	0	0
Kailey McCasland ph	1	1	1	0	0	0	0	0	0
Tammy Wray 3b	3	0	1	1	0	0	0	1	0
Simone Heyward pr	0	0	0	0	0	0	0	0	0
Heidi Pizer 1b	2	0	0	0	2	8	1	0	0
Brittany Mack p/pr	1	0	0	0	0	1	2	0	0
Totals	23	2	2	1	4	5	18	7	5

Player	ab	r	h	rbi	bb	so	po	a	lob
Raven Chavanne 3b	2	1	0	0	1	0	0	2	1
Kat Dotson rf	3	1	1	0	0	1	1	0	0
Madison Shipman ss	3	1	1	1	0	1	1	3	0
Lauren Gibson 2b	3	1	3	1	0	0	0	3	0
Shelby Burchell lf	2	0	1	0	0	1	0	0	0
Holly Baker pr/lf	1	0	0	0	0	0	0	0	1
Melissa Brown 1b	3	0	0	1	0	0	13	0	2
Cat Hosfield dp	3	0	1	0	0	1	0	0	0
Ashley Andrews c	2	0	0	0	0	0	4	1	0
Tory Lewis cf	1	0	0	0	0	1	1	0	0
Cheyenne Tarango ph	1	0	0	0	0	0	0	0	0
Ivy Renfro p	0	0	0	0	0	0	1	1	0
Ellen Renfro p	0	0	0	0	0	0	0	0	0
Totals	24	4	7	3	1	5	21	10	4

Score by Innings	1	2	3	4	5	6	7	R	H	E
LSU	0	0	0	0	0	0	2	2	2	0
Tennessee	4	0	0	0	0	0	X	4	7	0

LOB - LSU 5; Tennessee 4. HBP - Blades. SH - A. Andrews(5). SB - McCasland(1); Heyward(5); L. Gibson(11).

LSU	ip	h	r	er	bb	so	ab	bf	np	Tennessee	ip	h	r	er	bb	so	ab	bf	np
Brittany Mack	6.0	7	4	4	1	5	24	26	92	Ivy Renfro	6.1	1	2	2	4	3	20	25	96
										Ellen Renfro	0.2	1	0	0	0	2	3	3	11

Win - I. Renfro (12-6). Loss - Mack (12-7). Save - E. Renfro (3).
 WP - Mack(5). HBP - by I. Renfro (Blades). Inherited runners/scored: E. Renfro 2/2. Pitches/strikes: Mack 92/61;
 I. Renfro 96/58; E. Renfro 11/8.

Umpires - HP: Willie Newman 1B: Shelley Mangrum 3B: Christie Cornwell
 Start: 12:04 pm Time: 1:55 Attendance: 1609
 Weather: 68 partly cloudy; SSW 9 mph



2011 SEASON SERIES
NO. 10 TENNESSEE 10, NO. 22 LSU 2 - 4/15

KNOXVILLE, Tenn. - No. 10 Tennessee used a pair of five-run innings to rally for a 10-2 six-inning victory and claim a series sweep over the No. 22 LSU softball team Sunday in front of a ESPN national television audience and season's best 1,845 fans at Lee Stadium.

The Tigers (29-13, 11-6 SEC) started strong and grabbed a 2-0 advantage during the second inning. Allison Falcon ripped a 2-0 offering over the left field wall for the game's first run and her second ding of the season.

Ashley Applegate and Tammy Wray followed with a single and a walk to set the table. Both runners moved into scoring position on Morgan Russell's ground out.

Two batters later with two outs, A.J. Andrews deposited a timely RBI single to left field to plate Applegate and push LSU ahead by a 2-0 margin.

Rachele Fico opened the game with four scoreless frames before Tennessee (35-9, 16-6 SEC) was able to get its high-octane offense ignited.

Tori Lewis knocked a leadoff double to start the fifth inning. On a bunt attempt back to the pitching circle, Raven Chavanne reached on Fico throwing error which allowed Lewis to cross the plate to pull the Lady Vols back within 2-1.

Kat Dotson singled through the left side, Madison Shipman reached on a fielder's choice and Lauren Gibson walked to fill the bases. On a 1-1 count, Shelby Burchell cranked a bases clearing double into the left centerfield gap to vault Tennessee to a 4-2 lead.

Melissa Brown tacked on a RBI single to chase Fico from the game. Fico dropped to 14-6 on the season and picked up two strikeouts against three walks. The junior right-hander was touched up for five runs, four earned, on eight hits.

"I thought the offense did a really good job and enough to win the ball game," head coach Beth Torina said. "Our pitching and defense didn't hold them today. Normally, those two things [pitching and defense] are our strength. Our offense fought hard for those two runs and executed their plan."

The Lady Vols ripped off five runs during the sixth inning. Dotson and Shipman connected for a single and double off of Brittany Mack in relief. A fielding error by shortstop Juliana Santos on a Gibson chopper enabled both runners to score.

Whitney Hammond and Hannah Akamine added RBI hits for the final margin of 10-2. The top six hitters of the Tennessee lineup collected nine of the team's 13 hits as the Lady Vols won for the 13th time in the last 16 meetings of the series versus LSU since 2008.

LSU returns to the friendly confines of Tiger Park to open up a five-game homestand Tuesday versus McNeese State. First pitch is slated for 6 p.m. and season ticket holders are asked to use their original McNeese State tickets dated for April 18th for admission.



2012 LSU Softball
#22 LSU at #10 Tennessee
Apr 15, 2012 at Knoxville, Tenn. (Lee Stadium)



LSU 2 (29-13,11-6 SEC)

Player	ab	r	h	rbi	bb	so	po	a	lob
A.J. Andrews cf	3	0	1	1	0	0	1	0	1
Jacee Blades rf	2	0	0	0	0	0	2	0	0
Kalley McCastland ph	1	0	0	0	0	0	0	0	2
Ashley Langoni lf	3	0	1	0	0	1	1	0	0
Juliana Santos ss	3	0	1	0	0	2	1	2	1
Allison Falcon 2b	2	1	1	1	0	0	1	3	0
Ashley Applegate dp	3	1	1	0	0	0	0	0	1
Tammy Wray 3b	2	0	0	0	1	1	0	1	0
Morgan Russell c	2	0	1	0	0	5	1	0	0
Ashleigh Kuhn 1b	2	0	0	0	1	6	0	0	0
Rachele Fico p	0	0	0	0	0	0	0	0	0
Brittany Mack p	0	0	0	0	0	0	0	0	0
Totals	23	2	6	2	1	5	17	7	5

Tennessee 10 (35-9,16-6 SEC)

Player	ab	r	h	rbi	bb	so	po	a	lob
Raven Chavanne 3b	3	1	1	0	0	0	0	3	3
Kat Dotson rf	4	1	3	0	0	0	0	1	0
Madison Shipman ss	3	2	1	0	1	0	1	2	1
Lauren Gibson 2b	2	2	1	1	2	0	2	1	0
Shelby Burchell lf/dp	4	1	1	3	0	0	1	0	2
Melissa Brown 1b	4	0	2	1	0	1	6	0	0
Cheyenne Tarango dp/ph	1	0	0	0	0	1	0	0	0
Holly Baker lf	0	0	0	0	0	0	0	0	0
Melissa Davin ph/ff	1	0	0	0	0	1	0	0	0
Whitney Hammond lf	1	1	1	1	0	0	0	0	0
Ashley Andrews c	3	1	1	0	0	0	6	0	0
Cat Hosfield ph	1	0	0	0	0	0	0	0	2
Tory Lewis cf	3	1	1	0	0	1	1	0	0
Hannah Akamine ph	1	0	1	2	0	0	0	0	0
Ellen Renfro p	0	0	0	0	0	0	0	0	2
Ivy Renfro p	0	0	0	0	0	0	0	0	0
Totals	31	10	13	8	3	4	18	8	9

Score by Innings	1	2	3	4	5	6	R	H	E
LSU	0	2	0	0	0	0	2	6	3
Tennessee	0	0	0	0	5	5	10	13	0

Note: 2 outs, 1 runner LOB when the game ended.

E - Blades(1); Santos(2); Fico(3). LOB - LSU 5; Tennessee 9. 2B - M. Shipman(9); S. Burchell(6); W. Hammond(1); T. Lewis(3). HR - Falcon(2). HBP - C. Tarango. SH - Falcon(2); R. Chavanne(5). SB - M. Shipman 2(13); L. Gibson(12); A. Andrews(5). CS - R. Chavanne(1).

LSU	ip	h	r	er	bb	so	ab	bf	np
Rachele Fico	4.1	8	5	4	3	2	20	24	79
Brittany Mack	1.1	5	5	1	0	2	11	12	44

Tennessee	ip	h	r	er	bb	so	ab	bf	np
Ellen Renfro	3.1	6	2	2	1	2	15	17	66
Ivy Renfro	2.2	0	0	0	0	3	8	8	32

Win - I. Renfro (13-6). Loss - Fico (14-6). Save - None.
 WP - Fico(5). HBP - by Mack (C. Tarango). Inherited runners/scored: Mack 1/0; I. Renfro 1/0. Pitches/strikes: Fico 79/52; Mack 44/29; E. Renfro 66/46; I. Renfro 32/20.

Umpires - HP: Shelley Mangrum 1B: Christie Cornwell 3B: Willie Newman
 Start: 4:04 pm Time: 2:17 Attendance: 1845
 Weather: 78 sunny; SSW 15 mph





2014 LSU Softball
Overall Statistics for LSU (as of Apr 01, 2014)
(All games Sorted by Batting avg)



Record: 20-15 Home: 12-7 Away: 4-7 Neutral: 4-1 SEC: 2-7

Player	avg	gp-gs	ab	r	h	2b	3b	hr	rbi	tb	slg%	bb	hp	so	gdp	ob%	sf	sh	sb-att	po	a	e	fld%		
6 A.J. Andrews	.389	35-35	113	24	44	5	3	0	13	55	.487	16	1	22	0	.466	1	2	24-25	37	0	2	.949		
27 Bianca Bell	.344	35-35	96	23	33	8	1	6	23	61	.635	19	4	19	0	.471	0	2	5-7	59	50	9	.924		
32 Allison Falcon	.326	35-34	95	18	31	3	4	6	20	60	.632	6	1	8	0	.369	1	0	5-5	72	32	2	.981		
26 Bailey Landry	.324	30-27	71	10	23	2	0	0	7	25	.352	9	0	16	0	.395	1	1	7-8	8	2	2	.833		
23 Jacee Blades	.323	35-34	99	17	32	0	1	0	9	34	.343	6	2	12	0	.374	0	7	8-11	56	1	1	.983		
3 Sandra Simmons	.323	35-35	96	25	31	4	1	3	23	46	.479	20	1	14	0	.433	3	2	4-4	163	17	2	.989		
77 Kellsi Kloss	.292	33-32	89	21	26	5	0	7	17	52	.584	13	1	14	0	.388	0	0	3-3	127	13	0	1.000		
2 Sahvanna Jaquish	.290	35-35	100	18	29	3	0	9	30	59	.590	10	2	9	0	.363	1	0	1-1	100	6	2	.981		

24 Alayna Falcon	.500	6-0	4	1	2	0	0	0	0	2	.500	2	0	0	0	.667	0	0	0-0	0	0	0	.000		
33 Kailey McCasland	.400	6-0	5	2	2	0	0	1	6	5	1.000	1	0	1	0	.500	0	0	0-0	1	0	1	.500		
5 Constance Quinn	.381	16-4	21	5	8	1	0	1	7	12	.571	1	1	3	0	.435	0	2	1-1	6	6	1	.923		
21 Hailey Smith	.286	9-6	14	2	4	0	0	0	1	4	.286	8	1	5	0	.565	0	0	1-1	4	9	3	.813		
25 Simone Heyward	.241	26-9	29	5	7	0	1	0	3	9	.310	3	0	9	0	.313	0	0	5-6	7	0	0	1.000		
19 Baylee Corbello	.185	13-13	27	3	5	1	0	0	1	6	.222	6	0	2	0	.324	1	0	0-0	2	18	0	1.000		
18 Tammy Wray	.182	33-29	44	3	8	2	0	1	5	13	.295	6	0	3	0	.280	0	1	0-0	31	48	3	.963		
9 Alex Boulet	.167	18-0	6	3	1	0	0	0	1	1	.167	0	1	0	0	.286	0	0	4-4	1	0	0	1.000		
11 Dylan Supak	.000	3-0	3	1	0	0	0	0	0	0	.000	0	1	1	0	.250	0	0	0-0	0	0	0	.000		
1 Layna Savoie	.000	8-0	2	1	0	0	0	0	0	0	.000	0	0	1	0	.000	0	0	3-3	0	0	0	.000		
Totals	.313	35	914	182	286	34	11	34	166	444	.486	126	16	139	0	.402	8	17	71-79	676	218	30	.968		
Opponents	.211	35	826	101	174	23	0	19	93	254	.308	152	28	214	0	.350	6	20	19-28	660	292	36	.964		

LOB - Team (243), Opp (258). DPs turned - Team (11), Opp (14). CI - Team (0), Opp (1). IBB - Team (2), Jaquish 1, Andrews 1, Opp (1). Picked off - Andrews 1.

(All games Sorted by Earned run avg)

Player	era	w-l	app	gs	cg	sho	sv	ip	h	r	er	bb	so	2b	3b	hr	b/avg	wp	hp	bk	sfa	sha
19 Baylee Corbello	2.02	10-5	18	16	12	5/0	0	100.2	65	35	29	76	111	8	0	8	.182	8	10	1	1	7
16 Kelsee Selman	2.45	4-2	13	6	3	2/0	0	40.0	17	14	14	31	51	2	0	3	.122	5	6	0	0	0
99 Ashley Czechner	3.56	6-8	17	13	9	0/0	0	84.2	92	52	43	45	52	13	0	8	.280	1	12	0	5	13
Totals	2.67	20-15	35	35	24	7/0	0	225.1	174	101	86	152	214	23	0	19	.211	14	28	1	6	20
Opponents	4.90	15-20	35	35	19	3/0	1	220.0	286	182	154	126	139	34	11	34	.313	14	16	6	8	17

PB - Team (7), Jaquish 4, Kloss 3, Opp (3). Pickoffs - Team (1), Kloss 1, Opp (1). SBA/ATT - Kloss (11-17), Czechner (10-15), Corbello (9-13), Jaquish (8-11).

STARTERS BY POSITION RECORD

P	STARTS	RECORD	2B	STARTS	RECORD	LF	STARTS	RECORD	DP	STARTS	RECORD
Baylee Corbello	16	10-6	Allison Falcon	32	18-14	Jacee Blades	34	20-14	Sahvanna Jaquish	20	10-10
Ashley Czechner	13	5-8	Constance Quinn	3	2-1	Bailey Landry	1	0-1	Kellsi Kloss	12	9-3
Kelsee Selman	6	5-1						Allison Falcon	2	1-1	
			SS	STARTS	RECORD	CF	STARTS	RECORD	Constance Quinn	1	0-1
C	STARTS	RECORD	Bianca Bell	35	20-15	A.J. Andrews	35	20-15			
Kellsi Kloss	20	10-10									
Sahvanna Jaquish	15	10-5	3B	STARTS	RECORD	RF	STARTS	RECORD			
			Tammy Wray	29	17-12	Bailey Landry	26	15-11			
1B	STARTS	RECORD	Hailey Smith	6	3-3	Simone Heyward	9	5-4			
Sandra Simmons	35	20-15									



2014 LSU Softball
Conference statistics for LSU (as of Mar 30, 2014)
(SEC games only Sorted by Batting avg)



Record: 2-7 Home: 1-2 Away: 1-5 SEC: 2-7

Player	avg	gp-gs	ab	r	h	2b	3b	hr	rbi	tb	slg%	bb	hp	so	gdp	ob%	sf	sh	sb-att	po	a	e	fld%	
6 A.J. Andrews	.414	9-9	29	5	12	2	1	0	2	16	.552	4	0	7	0	.485	0	0	5-5	7	0	1	.875	
2 Savannah Jaquish	.346	9-9	26	5	9	1	0	4	6	22	.846	4	0	4	0	.433	0	0	0-0	4	0	1	.800	
27 Bianka Bell	.333	9-9	27	2	9	3	0	1	5	15	.556	2	0	4	0	.379	0	1	1-2	23	14	5	.881	
26 Bailey Landry	.304	9-9	23	2	7	1	0	0	0	8	.348	1	0	4	0	.333	0	0	1-1	1	1	0	1.000	
32 Allison Falcon	.259	9-9	27	3	7	3	1	1	2	15	.556	1	0	4	0	.286	0	0	1-1	23	15	0	1.000	
3 Sandra Simmons	.258	9-9	31	1	8	0	0	0	1	8	.258	0	0	6	0	.258	0	0	0-0	45	4	0	1.000	
77 Kellsy Kloss	.231	9-9	26	2	6	0	0	2	2	12	.462	3	0	6	0	.310	0	0	0-0	41	4	0	1.000	
23 Jacee Blades	.080	9-9	25	0	2	0	0	0	0	2	.080	2	0	5	0	.148	0	2	0-1	17	0	0	1.000	

5 Constance Quinn	1.000	3-0	1	0	1	0	0	0	1	1	1.000	0	0	0	0	1.000	0	1	1-1	0	1	1	.500	
21 Hailey Smith	.500	1-0	2	0	1	0	0	0	0	1	.500	0	0	0	0	.500	0	0	0-0	0	1	0	1.000	
19 Baylee Corbello	.167	3-3	6	0	1	1	0	0	1	2	.333	0	0	0	0	.143	1	0	0-0	0	3	0	1.000	
18 Tammy Wray	.154	9-9	13	0	2	1	0	0	1	3	.231	1	0	1	0	.214	0	1	0-0	9	13	2	.917	
25 Simone Heyward	.000	6-0	1	0	0	0	0	0	0	0	.000	0	0	1	0	.000	0	0	1-1	1	0	0	1.000	
1 Layna Savoie	.000	1-0	0	0	0	0	0	0	0	0	.000	0	0	0	0	.000	0	0	0-0	0	0	0	.000	
9 Alex Boulet	.000	3-0	0	2	0	0	0	0	0	0	.000	0	0	0	0	.000	0	0	0-0	0	0	0	.000	
Totals	.274	9	237	22	65	12	2	8	21	105	.443	18	0	42	0	.324	1	5	10-12	171	62	11	.955	
Opponents	.269	9	223	49	60	6	0	13	47	105	.471	47	15	43	0	.424	3	6	7-8	180	69	2	.992	

LOB - Team (59), Opp (74). DPs turned - Team (5), Opp (4). IBB - Team (1), Jaquish 1, Opp (1).

(SEC games only Sorted by Earned run avg)

Player	era	w-l	app	gs	cg	sho	sv	ip	h	r	er	bb	so	2b	3b	hr	b/avg	wp	hp	bk	sfa	sha
19 Baylee Corbello	4.61	1-2	6	4	1	0/0	0	27.1	23	23	18	30	30	4	0	6	.228	2	6	0	1	3
99 Ashley Czechner	5.73	1-3	6	4	2	0/0	0	22.0	31	20	18	11	10	2	0	4	.333	0	6	0	2	3

16 Kelsee Selman	5.48	0-2	5	1	0	0/0	0	7.2	6	6	6	6	3	0	0	3	.207	1	3	0	0	0
Totals	5.16	2-7	9	9	3	0/0	0	57.0	60	49	42	47	43	6	0	13	.269	3	15	0	3	6
Opponents	2.45	7-2	9	9	6	1/0	1	60.0	65	22	21	18	42	12	2	8	.274	3	0	0	1	5

PB - Team (1), Kloss 1. SBA/ATT - Kloss (6-7), Corbello (6-6), Czechner (1-2), Jaquish (1-1).

STARTERS BY LINEUP SPOT RECORD

1ST	STARTS	RECORD	4TH	STARTS	RECORD	7TH	STARTS	RECORD
A.J. Andrews	35	20-15	Savannah Jaquish	20	11-9	Allison Falcon	33	18-15
2ND			Bianka Bell	14	9-5	Constance Quinn	1	1-0
Jacee Blades	27	17-10	Kellsy Kloss	1	0-1	Baylee Corbello	1	1-0
Sandra Simmons	4	2-2	5TH			8TH		
Bailey Landry	3	2-1	Kellsy Kloss	22	13-9	Tammy Wray	17	9-8
Constance Quinn	1	0-1	Bianka Bell	10	7-3	Baylee Corbello	11	7-4
3RD			Sandra Simmons	1	0-1	Hailey Smith	6	3-3
Sandra Simmons	22	15-7	Baylee Corbello	1	0-1	Allison Falcon	1	1-0
Bianka Bell	11	4-7	Savannah Jaquish	1	0-1	9TH		
Savannah Jaquish	2	1-1	6TH			Bailey Landry	18	11-7
			Savannah Jaquish	12	8-4	Simone Heyward	9	5-4
			Kellsy Kloss	9	6-3	Jacee Blades	7	3-4
			Sandra Simmons	8	4-4	Constance Quinn	1	1-0
			Bailey Landry	6	2-4			

NO.	PLAYER [HR NUMBER]	OPPONENT [DATE]	PITCHER	ON-BASE	INNING	OUTS	COUNT	SCORE	FINAL
1	Sandra Simmons [1]	Oklahoma State [Feb. 8]	Freeman [RHP]	0	2	2	0-1	0-0	W, 1-0
2	Bianka Bell [1]	Central Arkansas [Feb. 9]	Studioso [RHP]	1	1	1	1-0	2-0	W, 8-1
3	Sahvanna Jaquish [1]	Central Arkansas [Feb. 9]	Jenkins [RHP]	0	6	0	2-0	7-1	W, 8-1
4	Kellsie Kloss [1]	Northwestern [Feb. 14]	Wood [RHP]	1	4	2	1-1	0-0	W, 4-0
5	Allison Falcon [1]	Northwestern [Feb. 14]	Wood [RHP]	0	4	2	3-2	2-0	W, 4-0
6	Allison Falcon [2]	George Washington [Feb. 14]	Rico [LHP]	3	2	2	3-2	7-1	W, 14-4
7	Bianka Bell [2]	George Washington [Feb. 15]	Martin [RHP]	1	1	1	2-2	2-0	W, 8-4
8	Sandra Simmons [1]	George Washington [Feb. 15]	Martin [RHP]	0	5	2	1-1	4-4	W, 8-4
9	Bianka Bell [3]	Penn State [Feb. 17]	Jones [LHP]	0	3	0	1-1	6-0	W, 11-3
10	Kellsie Kloss [2]	Penn State [Feb. 17]	Jones [LHP]	0	3	0	0-0	7-0	W, 11-3
11	Bianka Bell [4]	Long Beach State [Feb. 20]	Hansen [RHP]	0	3	1	0-0	2-0	W, 13-0
12	Kellsie Kloss [3]	Long Beach State [Feb. 20]	Pola [RHP]	2	5	2	1-2	10-0	W, 13-0
13	Allison Falcon [3]	Washington [Feb. 20]	Inglesby [RHP]	0	4	0	0-0	3-2	W, 6-3
14	Tammy Wray [1]	Washington [Feb. 20]	Inglesby [RHP]	0	4	0	2-2	4-2	W, 6-3
15	Kellsie Kloss [4]	Washington [Feb. 20]	Inglesby [RHP]	0	5	2	2-2	5-2	W, 6-3
16	Bianka Bell [5]	Oregon [Feb. 21]	Hawkins [LHP]	0	4	0	1-1	0-2	L, 1-4
17	Sahvannah Jaquish [2]	Cal State Fullerton [Feb. 21]	Wesley [RHP]	2	5	2	2-1	5-1	W, 8-1
18	Allison Falcon [4]	Stanford [Feb. 22]	Schreyer [RHP]	0	6	2	3-2	1-3	W, 5-3
19	Sahvanna Jaquish [3]	Jackson State [Feb. 28]	Townsend [RHP]	2	3	0	1-2	3-0	W, 8-0
20	Sahvanna Jaquish [4]	Lamar [March 1]	Schulz [RHP]	3	1	1	0-1	1-0	W, 10-0
21	Sandra Simmons [3]	Lamar [March 1]	Schulz [RHP]	2	2	1	0-1	5-0	W, 10-0
22	Kellsie Kloss [5]	Northwestern State [March 4]	Sells [RHP]	1	5	2	0-2	2-3	W, 5-3
23	Sahvanna Jaquish [5]	Auburn [March 8]	Harper [RHP]	0	2	0	1-1	1-2	L, 4-6
24	Bianka Bell [6]	Auburn [March 8]	Harper [RHP]	0	5	1	0-0	2-6	L, 4-6
25	Sahvanna Jaquish [6]	Auburn [March 8]	Harper [RHP]	0	5	2	3-1	3-6	L, 4-6
26	Sahvanna Jaquish [7]	Florida [March 14]	Gourley [LHP]	1	3	0	0-0	1-1	L, 6-7
27	Sahvanna Jaquish [8]	Florida [March 14]	Haeger [RHP]	0	5	0	2-2	4-1	L, 6-7
28	Kellsie Kloss [6]	Florida [March 14]	Haeger [RHP]	0	5	0	1-0	5-1	L, 6-7
29	Allison Falcon [5]	Florida [March 15]	Rogers [RHP]	0	4	1	2-1	3-0	W, 3-2
30	Sahvanna Jaquish [9]	Oklahoma [March 22]	Stevens [RHP]	0	4	0	3-2	0-0	L, 1-2
31	Constance Quinn [1]	Oklahoma [March 23]	Stevens [RHP]	0	4	0	0-1	3-0	L, 2-3
32	Kellsie Kloss [7]	Alabama [March 28]	Traina [RHP]	0	2	1	2-2	0-0	L, 1-5
33	Kailey McCasland [1]	ULM [April 1]	Wilson [RHP]	3	4	0	2-2	9-0	W, 14-1
34	Allison Falcon [6]	ULM [April 1]	Wilson [RHP]	0	5	2	2-1	13-1	W, 14-1

Bold represents game tying or go-ahead home run

HOME RUN BREAKDOWN

SITE	COUNT	CLASS	GAME TYPE
Home 17	0-0 Count 5	Freshman 10	Non-Conference 26
Away 9	0-1 Count 4	Sophomore 16	SEC Regular Season 8
Neutral 8	0-2 Count 1	Junior 1	SEC Tournament 0
	1-0 Count 2	Senior 7	NCAA Tournament 0
HR TYPE	1-1 Count 5		GAME RESULT
Solo 22	1-2 Count 2		Wins 24
Two-Run 4	2-0 Count 1	INNING	Losses 10
Three-Run 4	2-1 Count 3	1st Inning 3	
Grand Slam 3	2-2 Count 6	2nd Inning 4	
	3-0 Count 0	3rd Inning 5	
NUMBER OF OUTS	3-1 Count 1	4th Inning 11	MISC
0 Outs 14	3-2 Count 4	5th Inning 9	Leadoff 8
1 Out 6		6th Inning 2	Inside the Park 0
2 Outs 12		7th Inning 0	
		Extra Innings 0	

DATE	OPPONENT	RESULT	INN	LSU R-H-E	OPP. R-H-E	RECORD [SEC]	PITCHER OF RECORD	ATT	TIME
Feb. 6	No. 10/10 Texas	L, 1-6	7	1-4-0	6-7-0	0-1 [0-0]	Czechner [0-1]	1,343	2:07
Feb. 7	Minnesota [1]	L, 0-1	7	0-2-0	1-2-2	0-2 [0-0]	Corbello [0-1]	1,168	2:08
Feb. 7	SIU Edwardsville [1]	W, 14-2	[5]	14-9-0	2-2-2	1-2 [0-0]	Czechner [1-1]	1,168	1:45
Feb. 8	Oklahoma State [1]	W, 1-0	7	1-3-0	0-1-0	2-2 [0-0]	Corbello [1-1]	1,628	2:04
Feb. 8	Murray State [1]	W, 10-2	[5]	10-13-0	2-2-1	3-2 [0-0]	Czechner [2-1]	1,628	2:00
Feb. 9	Central Arkansas [1]	W, 8-1	7	8-11-3	1-4-1	4-2 [0-0]	Selman [1-0]	1,289	2:26
Feb. 14	Northwestern [2]	W, 4-0	7	4-4-0	0-4-1	5-2 [0-0]	Corbello [2-1]	1,119	2:16
Feb. 14	George Washington [2]	W, 14-4	[5]	14-9-2	4-5-1	6-2 [0-0]	Czechner [3-1]	1,119	2:04
Feb. 15	No. 18/19 South Alabama [2]	L, 2-1	7	1-9-1	2-5-1	6-3 [0-0]	Corbello [2-2]	1,548	2:40
Feb. 15	George Washington [2]	W, 8-4	7	8-8-0	4-5-4	7-3 [0-0]	Czechner [4-1]	1,548	2:21
Feb. 17	Penn State [2]	W, 11-3	[5]	11-12-0	3-2-0	8-3 [0-0]	Corbello [3-2]	1,071	1:42
Feb. 17	Penn State [2]	L, 6-5	7	5-12-1	6-8-0	8-4 [0-0]	Czechner [4-2]	1,071	2:18
Feb. 20	Long Beach State [3]	W, 13-0	[5]	13-12-2	0-2-0	9-4 [0-0]	Corbello [4-2]	245	1:54
Feb. 20	No. 3/2 Washington	W, 6-3	7	6-10-3	3-7-2	10-4 [0-0]	Czecher [5-2]	327	2:14
Feb. 21	No. 6/8 Oregon	L, 1-4	7	1-6-1	4-8-1	10-5 [0-0]	Czechner [5-3]	289	2:11
Feb. 21	Cal State Fullerton	W, 8-1	7	8-11-0	1-6-2	11-5 [0-0]	Corbello [5-2]	220	2:22
Feb. 22	No. 13/11 Stanford	W, 5-3	7	5-10-0	3-7-1	12-5 [0-0]	Corbello [6-2]	474	2:00
Feb. 28	Harvard [4]	L, 0-1	[12]	0-7-0	1-9-1	12-6 [0-0]	Czechner [5-4]	1,147	3:05
Feb. 28	Jackson State [4]	W, 8-0	[6]	8-12-0	0-0-4	13-6 [0-0]	Selman [2-0]	1,147	1:49
March 1	Iowa State [4]	W, 1-0	7	1-5-1	0-6-2	14-6 [0-0]	Corbello [7-2]	1,360	2:01
March 1	Lamar [4]	W, 10-0	[5]	10-11-0	0-3-2	15-6 [0-0]	Selman [3-0]	1,360	1:33
March 4	Northwestern State	W, 5-3	7	5-6-3	3-6-1	16-6 [0-0]	Selman [4-0]	498	2:22
March 7	Auburn	W, 4-1	7	4-6-0	1-2-2	17-6 [1-0]	Corbello [8-2]	480	1:41
March 8	Auburn	L, 4-6	7	4-10-1	6-4-0	17-7 [1-1]	Czechner [5-5]	771	2:11
March 9	Auburn	L, 0-7	7	0-8-1	7-6-0	17-8 [1-2]	Corbello [8-3]	675	1:50
March 14	No. 1/1 Florida	L, 7-6	[8]	6-10-1	7-5-0	17-9 [1-3]	Selman [4-1]	1,767	3:05
March 15	No. 1/1 Florida	W, 3-2	7	3-9-3	2-5-0	18-9 [2-3]	Czechner [6-5]	2,189	2:13
March 16	No. 1/1 Florida	L, 2-10	[5]	2-5-2	10-11-0	18-10 [2-4]	Selman [4-2]	1,680	1:50
March 19	Nicholls	W, 9-0	[5]	9-10-0	0-1-1	19-10 [2-4]	Corbello [9-3]	412	1:35
March 22	No. 22/22 Oklahoma	L, 1-2	7	1-8-1	2-4-0	19-11 [2-4]	Corbello [9-4]	993	2:35
March 23	No. 22/22 Oklahoma	L, 2-3	7	2-6-2	3-6-1	19-12 [2]4	Czechner [6-6]	693	1:56
March 28	No. 7/5 Alabama	L, 1-9	[6]	1-4-1	9-10-0	19-13 [2-5]	Corbello [9-5]	2952	2:06
March 29	No. 7/5 Alabama	L, 1-2	7	1-10-2	2-7-0	19-14 [2-6]	Czechner [6-7]	3940	2:40
March 30	No. 7/5 Alabama	L, 1-5	7	1-4-0	5-11-0	19-15 [2-7]	Czechner [6-8]	3356	1:59
April 1	ULM	W, 14-1	[5]	14-11-0	1-2-4	20-15 [2-7]	Corbello [10-5]	1081	2:39

Home games are bolded and played at Tiger Park; Rankings reflect NFCA and USA Softball Top 25 polls on day of game; [SEC] Southeastern Conference game; [1] Tiger Classic [Tiger Park]; [2] Tiger Invitational [Tiger Park]; [3] Mary Nutter Collegiate Classic (Palm Springs, Calif.); [4] Purple & Gold Challenge [Tiger Park]; [5] SEC Tournament (Columbia, S.C.).

DATE	OPPONENT	1ST	2ND	3RD	4TH	5TH	6TH	7TH	8TH	9TH
Feb. 6	No. 10/10 Texas	Andrews	Blades	Bell	Jaquish	Kloss	Simmons	All. Falcon	Smith	Heyward
Feb. 7	Minnesota [1]	Andrews	Blades	Bell	Jaquish	Corbello	Simmons	All. Falcon	Wray	Heyward
Feb. 7	SIU Edwardsville [1]	Andrews	Blades	Bell	Jaquish	Kloss	Simmons	All. Falcon	Wray	Heyward
Feb. 8	Oklahoma State [1]	Andrews	Blades	Bell	Jaquish	Kloss	Simmons	Corbello	All. Falcon	Heyward
Feb. 8	Murray State [1]	Andrews	Blades	Simmons	Jaquish	Bell	Kloss	All. Falcon	Smith	Landry
Feb. 9	Central Arkansas [1]	Andrews	Blades	Simmons	Jaquish	Bell	Landry	All. Falcon	Smith	Quinn
Feb. 14	Northwestern [2]	Andrews	Blades	Simmons	Jaquish	Bell	Kloss	All. Falcon	Corbello	Landry
Feb. 14	George Washington [2]	Andrews	Blades	Simmons	Jaquish	Bell	Kloss	Quinn	Smith	Heyward
Feb. 15	No. 18/19 South Alabama [2]	Andrews	Blades	Simmons	Jaquish	Bell	Kloss	All. Falcon	Wray	Heyward
Feb. 15	George Washington [2]	Andrews	Blades	Simmons	Jaquish	Bell	Kloss	Quinn	Smith	Heyward
Feb. 16	Penn State [2]	Andrews	Blades	Simmons	Jaquish	Bell	Kloss	All. Falcon	Corbello	Landry
Feb. 16	Penn State [2]	Andrews	Blades	Simmons	Jaquish	Bell	Kloss	All. Falcon	Smith	Heyward
Feb. 20	Long Beach State [3]	Andrews	Blades	Simmons	Jaquish	Bell	Kloss	All. Falcon	Corbello	Landry
Feb. 20	No. 3/2 Washington [3]	Andrews	Blades	Simmons	Bell	Kloss	Jaquish	All. Falcon	Wray	Landry
Feb. 21	No. 6/8 Oregon [3]	Andrews	Blades	Simmons	Bell	Kloss	Jaquish	All. Falcon	Wray	Landry
Feb. 21	Cal State Fullerton [3]	Andrews	Blades	Simmons	Bell	Kloss	Jaquish	All. Falcon	Corbello	Landry
Feb. 22	No. 13/11 Stanford [3]	Andrews	Blades	Simmons	Bell	Kloss	Jaquish	All. Falcon	Wray	Heyward
Feb. 28	Harvard [4]	Andrews	Blades	Simmons	Bell	Kloss	Jaquish	All. Falcon	Wray	Landry
Feb. 28	Jackson [4]	Andrews	Blades	Simmons	Bell	Kloss	Jaquish	All. Falcon	Smith	Landry
March 1	Iowa State [4]	Andrews	Blades	Simmons	Bell	Kloss	Jaquish	All. Falcon	Corbello	Landry
March 1	Lamar [4]	Andrews	Blades	Simmons	Bell	Kloss	Jaquish	All. Falcon	Wray	Landry
March 4	Northwestern State	Andrews	Blades	Simmons	Bell	Kloss	Jaquish	All. Falcon	Wray	Landry
March 7	Auburn	Andrews	Blades	Simmons	Bell	Kloss	Jaquish	All. Falcon	Corbello	Landry
March 8	Auburn	Andrews	Blades	Simmons	Bell	Kloss	Jaquish	All. Falcon	Wray	Landry
March 9	Auburn	Andrews	Blades	Simmons	Bell	Kloss	Jaquish	All. Falcon	Corbello	Landry
March 14	No. 1/1 Florida	Andrews	Simmons	Bell	Jaquish	Kloss	Landry	All. Falcon	Corbello	Blades
March 15	No. 1/1 Florida	Andrews	Simmons	Bell	Jaquish	Kloss	Landry	All. Falcon	Wray	Blades
March 16	No. 1/1 Florida	Andrews	Simmons	Bell	Jaquish	Kloss	Landry	All. Falcon	Wray	Blades
March 19	Nicholls	Andrews	Landry	Bell	Jaquish	Kloss	Simmons	All. Falcon	Corbello	Blades
March 22	No. 22/22 Oklahoma	Andrews	Landry	Bell	Jaquish	Kloss	Simmons	All. Falcon	Corbello	Blades
March 23	No. 22/22 Oklahoma	Andrews	Quinn	Bell	Jaquish	Simmons	Landry	All. Falcon	Wray	Heyward
March 28	No. 7/5 Alabama	Andrews	Simmons	Bell	Jaquish	Kloss	Landry	All. Falcon	Wray	Blades
March 29	No. 7/5 Alabama	Andrews	Blades	Simmons	Bell	Jaquish	Kloss	All. Falcon	Wray	Landry
March 30	No. 7/5 Alabama	Andrews	Blades	Jaquish	Kloss	Bell	Simmons	All. Falcon	Wray	Landry
April 1	ULM	Andrews	Landry	Jaquish	Bell	Kloss	Simmons	All. Falcon	Wray	Blades

Home games are bolded and played at Tiger Park; Rankings reflect NFCA and USA Softball Top 25 polls on day of game; [SEC] Southeastern Conference game; [1] Tiger Classic [Tiger Park]; [2] Tiger Invitational [Tiger Park]; [3] Mary Nutter Collegiate Classic [Palm Springs, Calif.]; [4] Purple & Gold Challenge [Tiger Park]; [5] SEC Tournament [Columbia, S.C.].

DATE	OPPONENT	P	C	1B	2B	SS	3B	LF	CF	RF	DP
Feb. 6	No. 10/10 Texas	Czechner	Kloss	Simmons	All. Falcon	Bell	Smith	Blades	Andrews	Heyward	Jaquish
Feb. 7	Minnesota [1]	Corbello	Jaquish	Simmons	Quinn	Bell	Wray	Blades	Andrews	Heyward	All. Falcon
Feb. 7	SIU Edwardsville [1]	Czechner	Kloss	Simmons	All. Falcon	Bell	Wray	Blades	Andrews	Heyward	Jaquish
Feb. 8	Oklahoma State [1]	Corbello	Jaquish	Simmons	All. Falcon	Bell	Wray	Blades	Andrews	Heyward	Kloss
Feb. 8	Murray State [1]	Selman	Kloss	Simmons	All. Falcon	Bell	Smith	Blades	Andrews	Landry	Jaquish
Feb. 9	Central Arkansas [1]	Selman	Jaquish	Simmons	Quinn	Bell	Smith	Blades	Andrews	Landry	All. Falcon
Feb. 14	Northwestern [2]	Corbello	Kloss	Simmons	All. Falcon	Bell	Wray	Blades	Andrews	Landry	Jaquish
Feb. 14	George Washington [2]	Czechner	Jaquish	Simmons	All. Falcon	Bell	Wray	Blades	Andrews	Heyward	Kloss
Feb. 15	No. 18/19 South Alabama [2]	Corbello	Jaquish	Simmons	Quinn	Bell	Smith	Blades	Andrews	Heyward	Kloss
Feb. 15	George Washington [2]	Selman	Jaquish	Simmons	Quinn	Bell	Smith	Blades	Andrews	Heyward	Kloss
Feb. 17	Penn State [2]	Corbello	Kloss	Simmons	All. Falcon	Bell	Wray	Blades	Andrews	Landry	Jaquish
Feb. 17	Penn State [2]	Czechner	Jaquish	Simmons	All. Falcon	Bell	Smith	Blades	Andrews	Heyward	Kloss
Feb. 20	Long Beach State [3]	Corbello	Jaquish	Simmons	All. Falcon	Bell	Wray	Blades	Andrews	Landry	Kloss
Feb. 20	No. 3/2 Washington [3]	Czechner	Kloss	Simmons	All. Falcon	Bell	Wray	Blades	Andrews	Landry	Jaquish
Feb. 21	No. 6/8 Oregon [3]	Czechner	Kloss	Simmons	All. Falcon	Bell	Wray	Blades	Andrews	Landry	Jaquish
Feb. 21	Cal State Fullerton [3]	Corbello	Jaquish	Simmons	All. Falcon	Bell	Wray	Blades	Andrews	Landry	Kloss
Feb. 22	No. 13/11 Stanford [3]	Corbello	Kloss	Simmons	All. Falcon	Bell	Wray	Blades	Andrews	Heyward	Jaquish
Feb. 24	Harvard [4]	Czechner	Jaquish	Simmons	All. Falcon	Bell	Smith	Blades	Andrews	Landry	Kloss
Feb. 24	Jackson State [4]	Selman	Kloss	Simmons	All. Falcon	Bell	Wray	Blades	Andrews	Landry	Jaquish
March 1	Iowa State [4]	Corbello	Kloss	Simmons	All. Falcon	Bell	Wray	Blades	Andrews	Landry	Jaquish
March 1	Lamar [4]	Selman	Jaquish	Simmons	All. Falcon	Bell	Wray	Blades	Andrews	Landry	Kloss
March 4	Northwestern State	Czechner	Jaquish	Simmons	All. Falcon	Bell	Wray	Blades	Andrews	Landry	Kloss
March 7	Auburn	Corbello	Kloss	Simmons	All. Falcon	Bell	Wray	Blades	Andrews	Landry	Jaquish
March 8	Auburn	Czechner	Jaquish	Simmons	All. Falcon	Bell	Wray	Blades	Andrews	Landry	Kloss
March 9	Auburn	Corbello	Kloss	Simmons	All. Falcon	Bell	Wray	Blades	Andrews	Landry	Jaquish
March 14	No. 1/1 Florida	Corbello	Kloss	Simmons	All. Falcon	Bell	Wray	Blades	Andrews	Landry	Jaquish
March 15	No. 1/1 Florida	Czechner	Jaquish	Simmons	All. Falcon	Bell	Wray	Blades	Andrews	Landry	Kloss
March 16	No. 1/1 Florida	Selman	Kloss	Simmons	All. Falcon	Bell	Wray	Blades	Andrews	Landry	Jaquish
March 19	Nicholls	Corbello	Kloss	Simmons	All. Falcon	Bell	Wray	Blades	Andrews	Landry	Jaquish
March 22	No. 22/22 Oklahoma	Corbello	Kloss	Simmons	All. Falcon	Bell	Wray	Blades	Andrews	Landry	Jaquish
March 23	No. 22/22 Oklahoma	Czechner	Jaquish	Simmons	All. Falcon	Bell	Wray	Landry	Andrews	Heyward	Quinn
March 28	No. 7/5 Alabama	Corbello	Kloss	Simmons	All. Falcon	Bell	Wray	Blades	Andrews	Landry	Jaquish
March 29	No. 7/5 Alabama	Czechner	Kloss	Simmons	All. Falcon	Bell	Wray	Blades	Andrews	Landry	Jaquish
March 30	No. 7/5 Alabama	Czechner	Kloss	Simmons	All. Falcon	Bell	Wray	Blades	Andrews	Landry	Jaquish
April 1	ULM	Corbello	Jaquish	Simmons	All. Falcon	Bell	Wray	Blades	Andrews	Landry	Kloss

Home games are bolded and played at Tiger Park; Rankings reflect NFCA and USA Softball Top 25 polls on day of game; [SEC] Southeastern Conference game; [1] Tiger Classic [Tiger Park]; [2] Tiger Invitational [Tiger Park]; [3] Mary Nutter Collegiate Classic [Palm Springs, Calif.]; [4] Purple & Gold Challenge [Tiger Park]; [5] SEC Tournament [Columbia, S.C.].



#1 LAYNA SAVOIE • FR. • OF • R-R • LAKE CHARLES, LOUISIANA

SEASON HIGHS			CAREER HIGHS		
Runs			Runs		
1	at Oklahoma	03/23/14	1	at Oklahoma	03/23/14
Hits			Hits		
NA			NA		
RBIs			RBIs		
NA			NA		
Hit Streak			Hit Streak		
NA			NA		



#2 SAHVANNA JAQUISH • FR. • C/INF • R-R • HIGHLAND, CALIFORNIA

SEASON HIGHS			CAREER HIGHS		
Runs			Runs		
2 [3x]	Florida	03/14/14	2 [3x]	Florida	03/14/14
Hits			Hits		
3	at Auburn	03/08/14	3	at Auburn	03/08/14
RBIs			RBIs		
4	Lamar	03/01/14	4	Lamar	03/01/14
Hit Streak			Hit Streak		
5 [2x]		03/14-22/14	5 [2x]		03/14-22/14



#3 SANDRA SIMMONS • SO. • INF • L-L • FOUNTAIN VALLEY, CALIFORNIA

SEASON HIGHS			CAREER HIGHS		
Runs			Runs		
3	at ULM	04/01/14	3 [2x]	at ULM	04/01/14
Hits			Hits		
2 [9x]	at ULM	04/01/14	3	Central Connecticut State	05/18/13
RBIs			RBIs		
4 [2x]	Lamar	03/01/14	4 [4x]	Lamar	03/01/14
Hit Streak			Hit Streak		
4 [2x]		02/14-17/14	7		03/19/13-03/27/13



#5 CONSTANCE QUINN • FR. • INF • R-R • HATTIESBURG, MISSISSIPPI

SEASON HIGHS			CAREER HIGHS		
Runs			Runs		
1 [5x]	at ULM	04/01/14	1 [5x]	at ULM	04/01/14
Hits			Hits		
1 [8x]	at Oklahoma	03/23/14	1 [8x]	at Oklahoma	03/23/14
RBIs			RBIs		
2 [2x]	at Oklahoma	03/23/14	2 [2x]	at Oklahoma	03/23/14
Hit Streak			Hit Streak		
4		02/07-14/14	4		02/07-14/14



#6 A.J. ANDREWS • JR. • OF • L-R • OLDSMAR, FLORIDA

SEASON HIGHS			CAREER HIGHS		
Runs			Runs		
3	SIU Edwardsville	02/07/14	3 [3x]	SIU Edwardsville	02/07/14
Hits			Hits		
3 [4x]	at Auburn	03/07/14	4	vs. No. 14 Michigan	03/02/13
RBIs			RBIs		
3	Nicholls	03/19/14	3 [4x]	at Nicholls	03/19/14
Hit Streak			Hit Streak		
15		02/28/14-03/29/14	15		2/28/14-03/29/14



#9 ALEX BOULET • SR. • OF • L-L • CROWLEY, LOUISIANA

SEASON HIGHS			CAREER HIGHS		
Runs			Runs		
1 [3x]	at Alabama	03/30/14	2 [2x]	Nicholls State	04/06/11
Hits			Hits		
1	George Washington	02/14/14	2	Nicholls State	04/06/11
RBIs			RBIs		
1	George Washington	02/14/14	1 [4x]	George Washington	02/14/14
Hit Streak			Hit Streak		
NA			2		04/23/11-04/27/11



#11 DYLAN SUPAK • JR. • UTL • R-R • LAGRANGE, TEXAS

SEASON HIGHS			CAREER HIGHS		
Runs			Runs		
1	at ULM	04/01/14	2	at Nicholls State	03/07/12
Hits			Hits		
NA			2 [5x]	at South Carolina	03/23/12
RBIs			RBIs		
NA			2 [6x]	vs. No. 10 Oregon	03/01/13
Hit Streak			Hit Streak		
NA			3		03/07/12-03/10/12



#18 TAMMY WRAY • SR. • INF • R-R • SOMERS, NEW YORK

SEASON HIGHS			CAREER HIGHS		
Runs			Runs		
1 [3x]	at ULM	04/01/14	2 [11x]	South Carolina	03/23/13
Hits			Hits		
2 [2x]	at ULM	04/01/14	3	Southeastern Louisiana	02/16/11
RBIs			RBIs		
2	at ULM	04/01/14	4	South Carolina	03/23/13
Hit Streak			Hit Streak		
NA			6 [3x]		02/16/13-02/22/13



#19 BAYLEE CORBELLO • FR. • P/UTL • R-R • LAKE CHARLES, LOUISIANA

SEASON HIGHS			CAREER HIGHS		
Runs			Runs		
1 [3x]	at Nicholls	03/19/14	1 [3x]	at Nicholls	03/19/14
Hits			Hits		
1 [5x]	at Nicholls	03/19/14	1 [5x]	at Nicholls	03/19/14
RBIs			RBIs		
1	at Auburn	03/07/14	1	at Auburn	03/07/14
Hit Streak			Hit Streak		
2		02/20-21/14	2		02/20-21/14



#21 HAILEY SMITH • SO. • INF • R-R • BRISTOW, VIRGINIA

SEASON HIGHS			CAREER HIGHS		
Runs			Runs		
1 [2x]	Murray State	02/08/14	1 [8x]	George Washington	02/15/14
Hits			Hits		
1 [4x]	Auburn	03/09/14	2	Hampton	02/09/13
RBIs			RBIs		
1	Central Arkansas	02/09/14	1 [2x]	Central Arkansas	02/09/14
Hit Streak			Hit Streak		
3		02/06-09/14	3		02/06-09/14



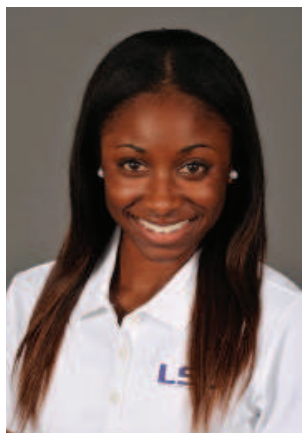
#23 JACEE BLADES • SR. • OF • L-R • BATON ROUGE, LOUISIANA

SEASON HIGHS			CAREER HIGHS		
Runs			Runs		
2 [3x]	Lamar	03/01/14	2 [7x]	Lamar	03/01/14
Hits			Hits		
4	Oregon	02/21/14	4	Oregon	02/21/14
RBIs			RBIs		
2 [2x]	Murray State	02/08/14	2 [6x]	Murray State	02/08/14
Hit Streak			Hit Streak		
9		02/17-28/14	9		02/17-28/14



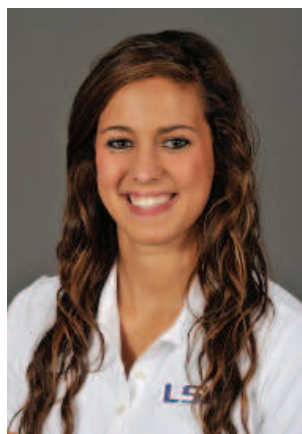
#24 ALAYNA FALCON • SO. • OF • R-R • DONALDSONVILLE, LOUISIANA

SEASON HIGHS			CAREER HIGHS		
Runs			Runs		
1	George Washington	02/14/14	1	George Washington	02/14/14
Hits			Hits		
1 [2x]	Lamar	03/01/14	1 [4x]	Lamar	03/10/14
RBIs			RBIs		
NA			NA		
Hit Streak			Hit Streak		
2		02/14/13-03/01/10	2 [2x]		02/14/13-03/01/14



#25 SIMONE HEYWARD • SR. • OF • R-R • SACRAMENTO, CALIFORNIA

SEASON HIGHS			CAREER HIGHS		
Runs			Runs		
1 [5x]	Stanford	02/22/14	4	Louisiana Tech	02/11/11
Hits			Hits		
2	Stanford	02/22/14	3 [2x]	at Georgia	05/03/13
RBIs			RBIs		
3	George Washington	02/14/14	3 [2x]	George Washington	02/14/14
Hit Streak			Hit Streak		
2 [2x]		02/21-22/14	5 [2x]		04/21/13-05/05/13



#26 BAILEY LANDRY • FR. • OF • L-R • PRAIRIEVILLE, LOUISIANA

SEASON HIGHS			CAREER HIGHS		
Runs			Runs		
2	Long Beach State	02/20/14	2	Long Beach State	02/20/14
Hits			Hits		
2 [6x]	at Nicholls	03/19/14	2 [6x]	at Nicholls	03/19/14
RBIs			RBIs		
2 [2x]	Penn State	02/17/14	2 [2x]	Penn State	02/17/14
Hit Streak			Hit Streak		
6		02/28/14-03/08/14	6		02/28/14-03/08/14



#27 BIANKA BELL • SO. • INF • R-R • TAMPA, FLORIDA

SEASON HIGHS			CAREER HIGHS		
Runs			Runs		
3 [3x]	Jackson State	02/28/14	3 [5x]	Jackson State	02/28/14
Hits			Hits		
3 [2x]	Lamar	03/01/14	3 [4x]	Lamar	03/01/14
RBIs			RBIs		
3	Penn State	02/17/14	4	at No. 25 South Alabama	03/27/13
Hit Streak			Hit Streak		
8		03/08-23/14	8		03/08-23/14



#32 ALLISON FALCON • R SR. • INF • R-R • DONALDSONVILLE, LOUISIANA

SEASON HIGHS			CAREER HIGHS		
Runs			Runs		
2 [3x]	at ULM	04/01/14	3	Nicholls State	03/23/10
Hits			Hits		
3	Florida	03/15/14	3 [4x]	Florida	03/15/14
RBIs			RBIs		
4	George Washington	02/14/14	4	George Washington	02/14/14
Hit Streak			Hit Streak		
5		03/07-15/14	9		06/02/12-02/15/13



#33 KAILEY MCCASLAND • JR. • UTL • R-R • SAN CLEMENTE, CALIFORNIA

SEASON HIGHS			CAREER HIGHS		
Runs			Runs		
1 [2x]	at ULM	04/01/14	2 [2x]	No. 22 North Carolina	02/08/13
Hits			Hits		
1 [2x]	at ULM	04/01/14	2 [3x]	Nicholls State	04/04/12
RBIs			RBIs		
4	at ULM	04/01/14	4	at ULM	04/01/14
Hit Streak			Hit Streak		
NA			3		03/07/12-03/09/12



#77 KELLSY KLOSS • SO. • C • R-R • CYPRESS, CALIFORNIA

SEASON HIGHS			CAREER HIGHS		
Runs			Runs		
3	Penn State	02/17/14	3	Penn State	02/17/14
Hits			Hits		
3	Penn State	02/17/14	3 [3x]	Penn State	02/17/14
RBIs			RBIs		
4	Long Beach State	02/20/14	6	vs. No. 14 Michigan	03/02/13
Hit Streak			Hit Streak		
6		02/15-20/14	6		02/15-20/14



#16 KELSEE SEMAN • FR. • P • R-R • LUFKIN, TEXAS

SEASON HIGHS

Runs		
4	George Washington	02/15/14
Hits		
4	Central Arkansas	02/09/14
Walks		
6	George Washington	02/15/14
Strikeouts		
13	Central Arkansas	02/09/14

CAREER HIGHS

Runs		
4	George Washington	02/15/14
Hits		
4	Central Arkansas	02/09/14
Walks		
6	George Washington	02/15/14
Strikeouts		
13	Central Arkansas	02/09/14



#19 BAYLEE CORBELLO • FR. • P/UTL • R-R • LAKE CHARLES, LOUISIANA

SEASON HIGHS

Runs		
9	at Alabama	03/28/14
Hits		
8	at Alabama	03/28/14
Walks		
9	Florida	03/14/14
Strikeouts		
13	Oklahoma State	02/08/14

CAREER HIGHS

Runs		
6	Florida	03/14/14
Hits		
7	Stanford	02/22/14
Walks		
9	Florida	03/14/14
Strikeouts		
13	Oklahoma State	02/08/14



#99 ASHLEY CZECHNER • SR. • P • R-R • PAWLEY'S ISLAND, SOUTH CAROLINA

SEASON HIGHS

Runs		
6 [4x]	Florida	03/16/14
Hits		
9	Harvard	02/28/14
Walks		
6	Oregon	02/21/14
Strikeouts		
6 [3x]	Florida	03/16/14

CAREER HIGHS

Runs		
10	at Georgia	05/05/13
Hits		
10	at Georgia	05/05/13
Walks		
7	at No. 10 Texas A&M	04/13/13
Strikeouts		
15	Central Connecticut State	05/17/13