



2012 LSU Softball

Women's College World Series • May 31
 LSU vs. No. 1 California • ASA Hall of Fame
 TV: ESPN2/ESPN3.com • Radio: 104.9 FM



Live Updates: www.Facebook.com/LSUsoftball

SETTING THE SCENE

- ▶ Fresh off its NCAA College Station Regional and NCAA Columbia Super Regional championships, LSU will appear in the program's third Women's College World Series when the Tigers face off with No. 1 national seed California.
- ▶ It marks the second time that LSU will make a WCWS trip under a first-year coach with the program. NFCA Hall of Fame inductee Yvette Girouard took the Tigers to the 2001 WCWS.
- ▶ In the current regional/super regional format that began in 2005, LSU is only the third team to reach the WCWS after knocking off two national seeds on the road joining 2008 Louisiana-Lafayette and 2008 Virginia Tech. 2005 DePaul co-hosted its super regional with Northwestern.
- ▶ Going back to 2006, LSU has been ranked in 93 of the last 102 editions of the NFCA/USA Softball Top 25 polls. The Tigers were receiving votes in both polls final regular season editions and had a run of five straight weeks being ranked come to close on May 8.

SPORTS INFORMATION

Associate AD/SID	Michael Bonnette
Senior Associate SID	Kent Lowe
Senior Associate SID	Bill Franques
Associate SID (Softball)	Matt Dunaway
Dunaway's Email	mdunaway@lsu.edu
Dunaway's Office Phone	(225) 578-1869
Dunaway's Cell Phone	(225) 226-5034
Associate SID	Bill Martin
Associate SID	Will Stafford
Associate SID	Jake Terry
Student SIDs	Kevin Alvarez, Ashley Amoss
Student SIDs	Caroline Downer, Brooke Hochstetler
Student SIDs	Melani Johnson, Seth Medvin
Student SIDs	Jake Most, Jacie Scott
Publications Director	Jason Feirman
Graphics Design Coordinators	Krystal Bennett, Courtney Wilburn
Staff Photographer	Steve Franz
Photography Assistant	Chris Parent, Hilary Scheinuk
Administrative Specialist	Pam LeBlanc

WHAT'S INSIDE

Intro/Schedule & Results/SEC Championship Tradition	1
Quick Facts/Possible Starting Lineup/2012 Roster	2
2012 Trends/Media Info/LSU-Cal Inside Look	3
Team/Player Notes	4-9
SEC Standings/LSU-Cal History & Player Stats	4
Top 25 Polls/2012 Walkoff Wins/Career Record Watch	5-6
Multi-Hit & Multi-RBI/Hitting Streak/RPI Report	7
NCAA Tournament History/2012 Comeback Wins	8-9
2012 Honors & Awards/NCAA Tournament Records	10
The Last Time/Inning-by-Inning	11
A Look Back: LSU - NCAA College Station Regional	12-17
Statistics & Player Career/Season Highs	18-23, 24-29

WHAT'S NEXT

- ▶ The LSU-California winner advances to Friday's winner's bracket tilt at 6 p.m. versus Oklahoma-South Florida winner. The loser faces elimination on Saturday at 11 a.m.

SCHEDULE/RESULTS (39-23, 15-13 SEC)

FEBRUARY [9-4]

10	Penn State [1]	L, 5-3
11	No. 15/16 Michigan [1]	L, 2-1
11	Penn State [1]	W, 1-0 [8]
12	Louisiana Tech [1]	W, 8-0 [5]
18	vs. RV/RV DePaul [2]	L, 3-1
18	vs. Cal State Northridge [2]	W, 11-0 [5]
19	vs. No. 3/1 California	L, 14-3 [5]
19	vs. Utah State	W, 13-0 [5]
21	Southeastern Louisiana	W, 7-0
25	South Alabama [3, CST]	W, 5-4
25	NR/RV McNeese State [3]	W, 2-0
26	South Alabama [3]	W, 1-0
26	Alcorn State [3]	W, 2-0

MARCH [17-4]

2	at No. 8/9 Oklahoma [4]	L, 7-0
3	vs. No. 23/NR Oklahoma State [4]	W, 7-4
3	vs. No. 8/9 Oklahoma [4]	L, 5-0
4	at No. 23/NR Oklahoma State [4]	L, 1-0 [10]
7	at Nicholls State	W, 10-2 [5]
9	Mississippi Valley State [5]	W, 2-0
9	Troy [5]	W, 6-3
10	Troy [5]	W, 1-0
10	Mississippi Valley State [5]	W, 16-0 [5]
14	No. 20/No. 19 Auburn [SEC]	W, 4-1
14	No. 20/No. 19 Auburn [SEC]	L, 2-0
16	NR/RV Mississippi State [SEC]	W, 10-7
17	NR/RV Mississippi State [SEC]	W, 3-1
18	NR/RV Mississippi State [SEC]	W, 4-0
21	RV/RV Georgia Tech	W, 2-1
23	at South Carolina [SEC]	W, 5-0
24	at South Carolina [SEC]	W, 5-0
25	at South Carolina [SEC]	W, 9-0 [6]
28	at McNeese State	W, 4-0
30	Arkansas [SEC]	W, 1-0
31	Arkansas [SEC]	W, 9-1 [5]

APRIL [8-10]

1	Arkansas [SEC]	W, 3-2
4	Nicholls State	W, 6-1
6	at No. 2/2 Alabama [SEC, ESPN]	L, 6-0
7	at No. 2/2 Alabama [SEC]	W, 3-2

8	at No. 2/2 Alabama [SEC, FSN]	L, 6-0
13	at No. 10/10 Tennessee [SEC]	L, 2-0
14	at No. 10/10 Tennessee [SEC, ESPN]	L, 4-2
15	at No. 10/10 Tennessee [SEC, ESPN]	L, 10-2 [6]
17	McNeese State	W, 2-1
18	No. 22/No. 22 Florida State	L, 8-1
20	Ole Miss [SEC, CST]	W, 4-0
21	Ole Miss [SEC, CST]	W, 2-1
22	Ole Miss [SEC]	L, 1-0
24	at No. 2/4 Florida [SEC, CSS/CST]	L, 2-1 [8]
24	at No. 2/4 Florida [SEC, CSS/CST]	W, 1-0
27	No. 12/12 Georgia [SEC]	L, 1-0 [15]
28	No. 12/12 Georgia [SEC, CST]	L, 6-1
29	No. 12/12 Georgia [SEC, CST]	W, 1-0

MAY/JUNE [5-5]

4	at Kentucky [SEC]	L, 4-3 [8]
5	at Kentucky [SEC]	L, 2-1
6	at Kentucky [SEC]	L, 1-0
10	No. 7/7 Florida [6, ESPN/ESPN3.com]	L, 1-0
18	vs. Texas State [7, ESPN3.com]	W, 1-0
19	at No. 14/13 Texas A&M [7, ESPN3.com]	W, 2-0
20	at No. 14/13 Texas A&M [7, ESPN3.com]	W, 2-1
26	at No. 10/9 Missouri [8, ESPN/ESPN3.com]	W, 6-1
27	at No. 10/9 Missouri [8, ESPN/ESPN3.com]	L, 5-1 [12]
27	at No. 10/9 Missouri [8, ESPN/ESPN3.com]	W, 3-1
31	vs. No. 1/1 California [9, ESPN2/ESPN3.com]	2:30 p.m.

All game times are Central and subject to change; Rankings reflect NFCA and USA Softball Top 25 polls on day of game; Home games are bolded and played at Tiger Park; [SEC] Southeastern Conference game; [1] Tiger Classic [Tiger Park]; [2] Louisville Slugger Desert Classic [Las Vegas, Nev.]; [3] Tiger Invitational [Tiger Park]; [4] The Preview [Norman/Oklahoma City/Stillwater, Okla.]; [5] Purple & Gold Challenge [Baton Rouge]; [6] SEC Tournament [Tuscaloosa, Ala.]; [7] NCAA College Station Regional [College Station, Texas]; [8] NCAA Columbia Super Regional [Columbia, Mo.]; [9] Women's College World Series [Oklahoma City, Okla.]; [FSN] Fox Sports Network; [CSS] Charter Sports Southeast; [CST] Cox Sports Television; [ESPN, ESPN2, ESPN, ESPN3.com] SEC on ESPN Family of Networks.

LSU'S SEC CHAMPIONSHIP TRADITION

YEAR	EAST	WEST	OVERALL	TOURNAMENT
1997	South Carolina	LSU	South Carolina	South Carolina
1998	Florida	LSU	Florida	Alabama
1999	Tenn, USC	LSU	LSU	LSU
2000	Kentucky	LSU	LSU	South Carolina
2001	South Carolina	LSU	LSU	LSU
2002	South Carolina	LSU	LSU	LSU
2003	Georgia	Alabama	Georgia	Alabama
2004	Tennessee	LSU	LSU	LSU
2005	Georgia	Alabama	Georgia	Alabama
2006	Georgia	Alabama	Alabama	Tennessee
2007	Tennessee	LSU	Tennessee	LSU
2008	Florida	Alabama	Florida	Florida
2009	Florida	Alabama	Florida	Florida

YEAR	EAST	WEST	OVERALL	TOURNAMENT
2010	Florida	Alabama	Alabama	Alabama
2011	Florida	Alabama	Alabama	Tennessee
2012	Tennessee	Alabama	Alabama	Alabama

CHAMPIONSHIPS	DIVISION	OVERALL	TOURNAMENT
LSU	8	5	5
Alabama	8	4	5
Florida	5	3	2
South Carolina	4	1	2
Tennessee	4	1	2
Georgia	3	2	0
Kentucky	1	0	0

QUICK FACTS**UNIVERSITY**

Location	Baton Rouge, La.
Founded	1860
Enrollment	28,771
Nickname	Tigers or Fighting Tigers
Colors	Purple and Gold
Mascot	Mike VI [live Bengal tiger]
Conference	Southeastern
Website	www.lsusports.net
President [Interim]	Dr. William Jenkins
Chancellor	Dr. Michael V. Martin
NCAA Faculty Representative	Bill Demastes

ATHLETICS DEPARTMENT

Director of Athletics/Vice Chancellor	Joe Allava
Senior Associate AD/Operations	Verge Ausberry
Senior Associate AD/Student Services & SWA	Miriam Segar
Senior Associate AD/External Affairs & Vice Chancellor for University Relations	Herb Vincent
Senior Associate AD/Business	Mark Ewing
Senior Associate AD/Compliance & Planning	Bo Bahnsen
Senior Associate AD/Facilities & Grounds	Ronnie Haliburton
Senior Associate AD/Internal Affairs & Project Development	Eddie Nunez
Assistant AD/Ticket Manager	Brian Broussard
Assistant AD/Marketing	Matt Shanklin

COACHING STAFF

Head Coach	Beth Torina
Record at LSU [Seasons]	39-23 [1]
Career Record [Seasons]	168-134 [5]
Assistant Coach	Howard Dobson
Year at LSU	1st Season
Assistant Coach	Lindsay Leftwich
Year at LSU	1st Season
Director of Operations	Quinlan Duhon
Year at LSU	3rd Season

TEAM INFORMATION

2011 Record [SEC]	40-18 [19-9 SEC]
2011 SEC Finish [Division]	4th [2nd West]
2011 SEC Tournament Finish	Quarterfinals
2011 Postseason	NCAA Regionals
Letterwinners Returning/Lost	13/2
Starters Returning/Lost	7/2
Pitchers Returning/Lost	3/0
Newcomers	6

FACILITY INFORMATION

Name [Capacity]	Tiger Park [2,489]
Dimensions [L-R]	200-210-220-210-200
Press Box Number	[225] 578-0154

PROGRAM HISTORY

All-Time Record [Percentage]	782-245-1 [.761]
NCAA Tournament Appearances	14
Years	1998-2004, 2006-2012
NCAA Tournament Record	41-26 [.612]
Women's College World Series Appearances	3
Years	2001, 2004 & 2012

SEC HISTORY

All-Time SEC Record [Percentage]	329-125-1 [.724]
SEC Western Division Titles	8
Years	1997-2002, 2004 & 2007
SEC Regular Season Titles	5
Years	1999, 2000, 2001, 2002, 2004
All-Time SEC Tournament Record	36-16 [.692]
SEC Tournament Titles	5
Years	1999, 2001, 2002, 2004, 2007

POSSIBLE STARTING LINEUP • DEPTH CHART

POS	NAME	HT	CL.	GP-GS	H-AB	AVG	OB%	SLG%	R	BB	2B	3B	HR	RBI	TB	SF-SH	SB-ATT
C	Morgan Russell	5-7	Sr.	35-34	13-74	.176	.315	.257	4	5	3	0	1	9	19	0-4	0-0
C	Lauren Houston	5-5	Jr.	29-28	12-53	.226	.425	.226	10	6	0	0	0	5	12	1-2	0-0
1B	Dylan Supak	5-10	Fr.	45-41	19-91	.209	.339	.275	10	14	3	0	1	11	25	0-4	1-1
1B	Heidi Pizer	5-10	Sr.	33-10	5-30	.167	.306	.167	6	6	0	0	0	4	5	0-1	2-2
1B	Ashleigh Kuhn	5-7	So.	27-21	13-59	.220	.277	.254	3	5	2	0	0	13	15	1-1	0-1
2B	Allison Falcon	5-4	So.	50-50	34-135	.252	.322	.356	17	6	3	1	3	22	48	0-5	5-6
2B	Rikki Alcaraz	5-2	Fr.	25-16	10-43	.233	.389	.302	13	10	3	0	0	4	13	0-0	2-3
SS	Juliana Santos	5-5	Sr.	55-55	39-156	.250	.333	.314	18	18	7	0	1	22	49	3-0	5-6
3B	Tammy Wray	5-7	So.	56-51	19-122	.156	.304	.172	6	22	2	0	0	9	21	0-4	1-1
3B	Kailey McCasland	5-6	Fr.	32-19	12-56	.214	.297	.286	7	5	1	0	1	9	16	1-1	1-1
LF	Ashley Langoni	5-6	Sr.	62-62	43-162	.265	.415	.457	33	43	11	1	6	30	74	5-1	6-7
LF	Tammy Vermeulen	5-7	Fr.	14-1	2-4	.500	.667	.500	4	2	0	0	0	3	2	0-0	2-2
CF	Simone Heyward	5-0	So.	37-21	12-56	.214	.395	.232	12	15	1	0	0	6	13	2-1	9-9
CF	Jacee Blades	5-6	Jr.	42-27	19-85	.224	.290	.235	12	6	1	0	0	2	20	0-5	5-8
RF	A.J. Andrews	5-4	Fr.	51-46	31-136	.228	.327	.272	19	19	0	3	0	8	37	0-4	14-17
RF	Alex Boulet	5-0	So.	33-1	0-7	.000	.000	.000	9	0	0	0	0	0	0	0-0	12-15
DP	Ashley Applegate	5-5	Sr.	60-60	33-163	.202	.305	.258	18	21	5	2	0	6	42	0-3	4-5
DP	Cassie Trosclair	5-4	Sr.	26-14	11-45	.244	.271	.311	3	1	1	1	0	7	14	1-2	3-5
DP	Brittany Mack	5-10	Sr.	7-5	1-9	.111	.111	.222	0	0	1	0	0	1	2	0-0	0-0

IN THE CIRCLE

POS	NAME	HT	CL.	APP-GS	W-L	ERA	CG	SHO	SV	IP	H	R	ER	BB	SO	WP-HP	OP-BA
P	Rachele Fico	5-7	Jr.	35-31	20-11	0.92	26	13/1	1	220.1	140	46	29	77	213	8-22	.177
P	Brittany Mack	5-10	Sr.	30-27	15-12	2.21	20	4/2	1	168.0	149	76	53	56	193	8-28	.228
P	Meghan Patterson	5-7	So.	9-4	4-0	1.83	4	2/3	0	38.1	24	10	10	16	40	5-2	.179

2012 ROSTER

NO.	NAME	POS	HT.	B-T	CL-EXP	HOMETOWN [PREVIOUS SCHOOL]
00	Ashley Langoni	OF	5-6	R-R	Sr.-3L	Pueblo, Colo. (Pueblo West HS)
1	Rikki Alcaraz	INF	5-2	L-R	Fr.-HS	Orland Park, Ill. (Marist HS)
2	Juliana Santos	INF	5-5	R-R	Sr.-3L	Newman, Calif. (Orestimba HS)
3	Cassie Trosclair	INF	5-4	L-R	Sr.-1L	New Orleans, La. (Auburn)
4	Morgan Russell	C	5-7	R-R	Sr.-3L	Edmond, Okla. (Santa Fe HS)
6	A.J. Andrews	OF	5-4	L-R	Fr.-HS	Oldsmar, Fla. (Countryside HS)
9	Alex Boulet	OF	5-0	L-L	So.-1L	Crowley, La. (Notre Dame HS)
10	Ashley Applegate	OF	5-5	L-R	R Sr.-3L	Modesto, Calif. (Fred C. Beyer HS)
11	Dylan Supak	UTL	5-10	R-R	Fr.-HS	LaGrange, Texas (LaGrange HS)
12	Heidi Pizer	INF	5-10	R-R	Sr.-2L	Tigard, Ore. (Louisiana-Lafayette)
13	Katie Guillory	OF	5-6	L-L	Sr.-3L	Lafayette, La. (Carenco HS)
16	Lauren Houston	C	5-5	R-R	Jr.-2L	Youngsville, La. (St. Thomas More Catholic HS)
18	Tammy Wray	INF	5-7	R-R	So.-1L	Somers, N.Y. (Somers HS)
20	Meghan Patterson	P	5-7	R-R	So.-1L	Destrehan, La. (Mount Carmel Academy)
23	Jacee Blades	UTL	5-6	L-R	So.-1L	Baton Rouge, La. (Parkview Baptist HS)
25	Simone Heyward	OF	5-0	L-R	So.-1L	Sacramento, Calif. (Rosemont HS)
28	Tammy Vermeulen	OF	5-7	L-R	Fr.-HS	Patchogue, N.Y. (Bayport Blue Point HS)
32	Allison Falcon	INF	5-4	R-R	R So.-1L	Donaldsonville, La. (Ascension Catholic HS)
33	Kailey McCasland	UTL	5-6	R-R	Fr.-HS	San Clemente, Calif. (San Clemente HS)
37	Rachele Fico	P	5-7	R-R	Jr.-2L	Oxford, Conn. (Masuk HS)
44	Brittany Mack	P	5-10	R-R	Sr.-3L	Round Rock, Texas (Westwood HS)
47	Ashleigh Kuhn	UTL	5-7	R-R	So.-TR	Nederland, Texas (Northwestern State)

COACHING STAFF

Head Coach: Beth Torina [Florida, 2000]

Assistant Coach: Howard Dobson [McNeese State, 1997]

Assistant Coach: Lindsay Leftwich [Northwestern State, 2005]

Director of Operations: Quinlan Duhon [LSU, 2008]

PRONUNCIATION GUIDE

Rikki ALCARAZ	awl-KUHL-raz	Ashley KUHN	koon
Alex BOULET	BOO-lay	Heidi PIZER	PIE-zer
Rachele FICO	FEE-co	Dylan SUPAK	SHOO-pak
Katie GUILLORY	Gill-or-ree	Tammy VERMEULEN	VUR-mill-yuhn
JACEE Blades	Jay-CEE		

COACHING STAFF

Beth TORINA

tohr-REE-na

Quinlan DUHON

do-YAWN

LSU'S RECORD WHEN ...

WIN-LOSS SUMMARY	2012	OVERALL
Overall	39-23	782-245-1
Non-Conference	19-8	374-77
SEC	15-13	329-125-1
SEC Tournament	0-1	36-16
NCAA Tournament	5-1	43-27
Home	24-7	433-76-1
Away	11-12	211-104
Neutral	4-4	138-65
vs. Top 10	4-11	56-90
vs. Top 25	7-15	149-161
Louisiana Teams	7-0	144-10
Day Games	25-17	563-191-1
Night Games	14-6	219-54
February	9-4	196-50
March	17-4	242-64
April	8-10	233-62-1
May	5-5	111-69
Sunday	10-7	158-64-1
Monday	0-0	5-0
Tuesday	4-1	50-8
Wednesday	4-2	110-16
Thursday	0-1	39-5
Friday	7-6	146-52
Saturday	14-6	274-100
RHP Starter	32-20	710-221-1
LHP Starter	7-3	72-24
Shutouts	22-11	358-93
Run-rule Games	7-2	179-18
Extra-inning Games	1-5	59-35
One-run Games	14-9	171-85
Two-run Games	6-5	98-46
Three-run + Games	19-9	513-114
Scored First	34-4	644-60-1
Opp. Scored First	5-19	138-185
Scored in 1st Inning	16-0	353-23-1
Opp. Scored in 1st Inning	3-9	102-84
Scored 0-2 Runs	15-20	126-192
Scored 3-5 Runs	11-3	289-47-1
Scored 6-9 Runs	8-0	262-5
Scored 10 + Runs	5-0	105-1
Opp. Scored 0-2 Runs	35-10	660-62
Opp. Scored 3-5 Runs	3-6	108-97-1
Opp. Scored 6-9 Runs	1-5	13-72
Opp. Scored 10 + Runs	0-2	1-14
Out-hit Opp.	26-2	659-54-1
Out-hit by Opp.	6-19	73-168
Hits are Tied	7-2	50-23
Made 0 Errors	18-10	371-63
Made 1 + Errors	21-13	411-182-1
Opp. Made 0 Errors	12-14	205-129
Opp. Made 1 + Errors	27-9	577-116-1
Leading after 6 Innings	28-1	513-18
Trailing after 6 Innings	0-15	22-173-1
Tied after 6 Innings	4-5	62-33

MEDIA INFORMATION

SPORTS INFORMATION

LSU Associate Sports Information Director Matt Dunaway handles the media relations duties for the Tiger softball team. Dunaway can be reached at his office (225) 578-1869, on his cell (225) 226-5034 or by e-mail at mdunaway@lsu.edu.

The Tiger Park press box phone number is (225) 578-0154 and will be available two hours prior to first pitch on gamedays.

PRACTICE TIMES/INTERVIEWS

LSU practices at Tiger Park and team sessions generally begin around 2:15 p.m. On most days, head coach Beth Torina and players are available for interviews prior to the team practice session.

Members of the media who wish to cover practice should contact SID Matt Dunaway for the latest practice times. During the season, the Tigers usually take Monday's off.

Office and phone interviews may be arranged on special occasions. Torina's office is located on the fourth floor of the Athletic Administration Building.

All interview requests must be made at least 24 hours in advance with Dunaway.

WWW.LSUSPORTS.NET

Information about the Tiger softball team, including player bios, game recaps and notes packets are available online at the Official Website of LSU Athletics, www.LSUsports.net.

LSU softball games that are broadcasted on the radio also can be heard in the Geaux Zone on LSUsports.net. Live streaming video for all home games broadcast on the radio that are not being televised by a national network as part of the SEC on ESPN package.

Live statistics for all games will be carried on LSUsports.net.

MEDIA.LSUSPORTS.NET

Media can now access images for all LSU athletics teams, including action shots, head shots and logos. To gain access to the high-resolution pictures, e-mail Matt Dunaway.

You will be assigned a user name and a password. This service is for media use only. Resale of these images is strictly prohibited.

TIGERS ON THE TUBE

LSU will make their 20th television appearance of the 2012 season at the Women's College World Series. Every pitch of the WCWS is carried live on ESPN, ESPN2 and ESPN3.com.

Below is a complete list of the Tigers television appearances which includes games on Cox Sports Television (cable channel 37, FSN (cable channel 38) and CSS/CST (cable channel 37).

Date	Opponent	Time	Network	Result
Feb. 25	South Alabama	12:30 p.m.	CST	W, 5-4
April 6	at Alabama	7 p.m.	ESPNU	L, 6-0
April 8	at Alabama	1:30 p.m.	FSN	L, 5-0
April 14	at Tennessee	11 a.m.	ESPN	L, 4-2
April 15	at Tennessee	4 p.m.	ESPN	L, 10-2
April 20	Ole Miss	6 p.m.	CST	W, 4-0
April 21	Ole Miss	6 p.m.	CST	W, 2-1
April 24	at Florida	4 p.m.	CSS/CST	L, 2-1
April 24	at Florida	6:30 p.m.	CSS/CST	W, 1-0
April 28	Georgia	4 p.m.	CST	L, 6-1
April 29	Georgia	1 p.m.	CST	W, 1-0
May 10	vs. Florida	11 a.m.	ESPNU	L, 1-0
May 18	vs. Texas State	4 p.m.	ESPN3.com	W, 1-0
May 19	at Texas A&M	1 p.m.	ESPN3.com	W, 2-0
May 20	at Texas A&M	1 p.m.	ESPN3.com	W, 2-1
May 26	at Missouri	6:30 p.m.	ESPNU	W, 6-1
May 27	at Missouri	2:30 p.m.	ESPNU	L, 5-1 [12]
May 27	at Missouri	5 p.m.	ESPNU	W, 3-1

TIGERS ON THE RADIO

LSU softball is in its 16th season of radio coverage, as the LSU Sports Network will broadcast all 28 SEC regular-season games and all postseason games.

The games will be broadcast in the Baton Rouge area on Country Legends 104.9 FM. In addition, the games can be heard live on the internet in the Geaux Zone at LSUsports.net.

Patrick Wright calls the play-by-play action, while Kent Lowe serves as the analyst for home games. Associate SID Matt Dunaway joins Wright for the road contests.

INSIDE LOOK • LSU VS. CALIFORNIA

LSU RECORD	39-23 [15-13 SEC]
RANKING [NFCA/USA SOFTBALL]	RV/RV
RPI	27
LAST WEEKEND	Missouri [W, 6-1; L, 5-1; W, 3-1]
HEAD COACH	Beth Torina
OVERALL RECORD	168-134
FEBRUARY	9-4
MARCH	17-4
APRIL	8-10
MAY	5-5
LAST 10	5-5
STREAK	W-1
TEAM BATTING AVERAGE	.221
PITCHING STAFF ERA	1.51

HITTING LEADERS

Ashley Langoni	.265, 6 HRs, 30 RBIs
Allison Falcon	.252, 3 HRs, 22 RBIs
Juliana Santos	.250, 1 HR, 22 RBIs

PITCHING LEADERS

Rachele Fico	20-11, 0.92 ERA, 213 Ks
Brittany Mack	15-12, 2.21 ERA, 193 Ks

CALIFORNIA RECORD	56-5 [21-3 PAC-12]
RANKING [NFCA/USA SOFTBALL]	1/1
RPI	1
LAST WEEKEND	Washington [W, 5-0; W, 2-0]
HEAD COACH	Diame Ninemire
OVERALL RECORD	1115-514
FEBRUARY	12-0
MARCH	19-1
APRIL	14-2
MAY	11-2
LAST 10	8-2
STREAK	W-5
TEAM BATTING AVERAGE	.318
PITCHING STAFF ERA	1.21

HITTING LEADERS

Valerie Arioto	.385, 23 HRs, 60 RBIs
Jamia Reid	.385, 0 HRs, 13 RBIs
Breana Kostreba	.308, 13 HRs, 42 RBIs

PITCHING LEADERS

Jolene Henderson	36-2, 1.10 ERA, 304 Ks
Valerie Arioto	20-3, 1.32 ERA, 155 Ks

STREAKS, STORYLINES & SIDEBARS

- LSU has compiled a 29-16 mark going back to March 7 highlighted by season's best 12-game winning streak [March 16-April 4]. The Tigers also posted a six-game run [March 7-14] during the stretch.
- However, LSU entered the NCAA postseason play with a four-game losing streak [May 4-10], losing eight of its last 10 games since the Ole Miss finale [April 22-May 10] and 14 of its last 20 contests going back to the Alabama opener [April 6-May 10].
- LSU ripped off three consecutive wins over Texas State [1-0] and No. 8 national seed Texas A&M [2-0, 2-1] to qualify for the program's first super regional since the 2007 season.
- At the NCAA Columbia Super Regional, LSU went the distance and knocked off its second straight future SEC rival in as many weekends as the Tigers toppled No. 9 national seed Missouri [6-1, 1-5, 3-1] to secure a spot in the program's third Women's College World Series.
- Complete recaps and box scores from LSU's NCAA postseason run through the NCAA College Station Regional and NCAA Columbia Super Regional championships can be found on pages 12-17.
- LSU will carry a 39-23 overall record and 15-13 SEC mark into its toughest test to date when the Tigers meet No. 1 national seed California in Thursday's Women's College World Series opener from ASA Hall of Fame Stadium in Oklahoma City.
- A series history along with player career stats versus Cal can be seen at the bottom of this page. The Golden Bears have won seven of the nine all-time meetings between the two schools.
- California claimed a 14-3 five-inning victory over LSU earlier this season at the Louisville Slugger Desert Classic held in Las Vegas. The Golden Bears connected for six first-inning runs and finished with four home runs. Breana Kostreba and Jace Williams combined for nine RBIs. The 14 runs allowed by LSU matched a program-high for a single-game. Allison Falcon, Ashleigh Kuhn and Kailey McCasland tallied RBIs for the Tigers.
- The last time LSU appeared in the WCWS was during the 2004 season where the Tigers away nearly pulled off the impossible.
- After a 2-1 win over Florida State and a 4-1 victory over California, LSU was seven outs away from winning three WCWS contests in the same day before the Golden Bears struck for a quartet of fifth inning runs.
- For her efforts, Kristin Schmidt was named the WCWS Most Outstanding Player. She is the only player to win the award outright without winning the national championship. Florida's Michelle Moultrie was named co-MOP in 2011.

- LSU has won 34 of 38 games this season when scoring first. The four exceptions came against Penn State [Feb. 10], No. 10 Tennessee [April 10], game one of a doubleheader versus No. 2 Florida [April 24] and Kentucky [May 4].
- LSU also has tallied an impressive 16-0 mark when scoring during the first inning. The Tigers ended a run of 20 straight games without a first inning run and posted both of their runs in a 2-0 triumph over Texas A&M [May 19] during the opening frame. Prior to that, LSU hadn't scored in the first inning since a 3-2 win over No. 2 Alabama [April 7].
- As a team, LSU is hitting .276 during its 39 wins compared to a .133 ratio in its 22 losses.
- In those 39 wins, LSU has outscored their opponents by a 183-34 margin sparked by 22 shutouts. The Tigers have secured a shutout in 13 of their 29 wins since the Nicholls State game [March 7].
- On April 29, LSU posted a 1-0 victory over No. 12 Georgia during the program's Senior Day after dropping the first two games of the series. Mack produced her first career hit and first career RBI with a two-out, double in the fifth inning, while Rachele Fico limited the powerful UGA offense to four hits.
- On April 24, LSU battled to a doubleheader split at No. 2 Florida. Mack fired a four-hit shutout and racked up eight strikeouts as the Tigers won in Gainesville for the first time since the 2005 season. Lauren Houston platted the game's only run with a two-out, RBI single following Ashley Applegate's triple in the second inning.
- On April 21, LSU wore teal jerseys to celebrate survivors and spread awareness during the program's inaugural "Strikeout Ovarian Cancer" event, a 2-1 victory over Ole Miss.
- Betty Dieter, mother of head coach Beth Torina and two-year ovarian cancer survivor, threw out the ceremonial first pitch. Ashleigh Kuhn, whose mother is a 10-year cervical cancer survivor, platted the game-winning RBI in the fourth inning.
- Seven weekends ago, LSU became only the second team during the 2012 season to defeat No. 2 Alabama [April 7]. The victory halted a 13-game winning streak by the home team in the LSU-Alabama rivalry and marked the Tigers first win in Tuscaloosa since 2006.
- The Tigers used a solid effort in all three phases of the game during a 3-2 triumph in-front of a then Rhoads Stadium record crowd of 3,521 fans.
- Ashley Langoni provided a two-run home run in the first inning, Rachele Fico notched nine strikeouts for a complete game in the

SERIES HISTORY - LSU VS. CALIFORNIA

AT A GLANCE [CALIFORNIA]

Overall	California leads 7-2
Home	NA
Away	NA
Neutral	California leads 7-2
WCWS	Series tied at 1-1
Streak	L-3

GAME-BY-GAME

Date	Result	Location
02/24/01	L, 3-0	Columbus, Ga.
02/16/02	L, 3-0	Las Vegas, Nev.
02/14/04	L, 5-1	Las Vegas, Nev.
02/28/04	W, 6-1	Columbus, Ga.
05/30/04	W, 4-1	Oklahoma City, Okla.
05/30/04	L, 4-1	Oklahoma City, Okla.
02/26/11	L, 11-3	Palm Springs, Calif.
02/19/12	L, 14-3 [5]	Las Vegas, Nev.

OFFENSE

Player	AVG	H-AB	R	HR	RBI	BB	SB-ATT
Houston	1.000	2-2	0	0	0	0	0-0
Pizer	1.000	1-1	0	0	0	0	0-0
Trosclair	1.000	1-1	1	0	0	0	0-0
Applegate	.667	2-3	1	0	0	0	0-0
Wray	.500	2-4	0	0	2	2	0-0
McCasland	.500	1-2	0	0	1	0	0-0
Santos	.400	2-5	1	0	1	1	0-0
Falcon	.333	1-3	1	0	1	0	0-0
Blades	.250	1-4	0	0	0	0	0-0
Heyward	.250	1-4	2	0	0	2	1-1
Langoni	.000	0-6	0	0	0	1	0-0
Russell	.000	0-4	0	0	0	0	0-0
Kuhn	.000	0-2	0	0	1	0	0-0

PITCHING

Player	W-L	ERA	IP	H	R	ER	BB	SO	AVG
Patterson	0-0	11.31	8.2	16	14	14	7	3	.381
Fico	0-1	13.12	2.2	8	5	5	0	2	.571
Mack	0-1	63.00	0.2	6	6	6	1	2	.750

SEC STANDINGS

Western Division

TEAM	SEC	PCT.	OVERALL	PCT.
Alabama	23-5	.821	55-7	.887
LSU	15-13	.536	39-23	.629
Auburn	12-16	.429	33-23	.589
Mississippi State	12-16	.429	33-24	.579
Ole Miss	7-21	.250	22-32	.407
Arkansas	7-21	.250	29-28	.509

Eastern Division

TEAM	SEC	PCT.	OVERALL	PCT.
Tennessee	22-6	.786	52-12	.813
Florida	21-7	.750	48-13	.787
Georgia	17-11	.607	45-17	.726
Kentucky	15-13	.536	30-30	.500
South Carolina	3-25	.120	23-32	.442

**THIS WEEK IN NCAA SOFTBALL - ALL TIMES ARE CENTRAL
NCAA Women's College World Series**

Thursday, May 31

G1: No. 19 South Florida vs. No. 4 Oklahoma [ESPN2]	12 p.m.
G2: LSU vs. No. 1 California [ESPN2]	2:30 p.m.
G3: No. 7 Tennessee vs. No. 2 Alabama [ESPN2]	6 p.m.
G4: No. 11 Oregon vs. No. 3 Arizona State [ESPN2]	8:30 p.m.

Friday, June 1

G5: G1 winner vs. G2 winner [ESPN2]	6 p.m.
G6: G3 winner vs. G4 winner [ESPN2]	8:30 p.m.

Saturday, June 2

G7: G1 loser vs. G2 loser [ESPN2]	11 a.m.
G8: G3 loser vs. G4 loser [ESPN2]	1:30 p.m.
G9: G7 winner vs. G6 loser [ESPN]	6 p.m.
G10: G8 winner vs. G5 loser [ESPN]	8:30 p.m.

Sunday, June 3

G11: G5 winner vs. G9 winner [ESPN]	12 p.m.
G12: G6 winner vs. G10 winner [ESPN]	2:30 p.m.
G13: G11 rematch if necessary [ESPNU]	6 p.m.
G14: G12 rematch if necessary [ESPNU]	8:30 p.m.

Championship Series

G1: Monday, June 4 [ESPN2]	7 p.m.
G2: Tuesday, June 5 [ESPN2]	7 p.m.
G3: Wednesday, June 6 if necessary [ESPN]	7 p.m.



USA TODAY/NFCA TOP 25

RANK	TEAM	RECORD	PTS	PVS
1	California [30]	50-4	750	1
2	Arizona State	46-7	705	2
3	Alabama	50-7	700	3
4	Oklahoma	45-8	662	4
5	Tennessee	46-10	614	5
6	Florida	46-11	591	7
7	Louisiana-Lafayette	49-4	562	6
8	Texas	42-10	538	8
9	Louisville	53-3	509	9
10	Missouri	43-12	475	10
11	Georgia	41-15	448	11
12	Oregon	39-15	427	13
13	Hawai'i	44-7	377	11
14	Texas A&M	39-16	354	16
15	UCLA	36-18	335	14
16	Stanford	38-17	309	15
17	Arizona	35-17	284	17
18	Washington	36-17	243	18
19	South Florida	45-11	189	19
20	Florida State	46-14	161	20
21	Michigan	39-15	141	22
22	North Carolina	41-13	135	21
23	Baylor	33-20	70	23
24	Texas Tech	40-15	65	25
25	Syracuse	40-14	30	24

Dropped Out: None

RV: BYU 22, Tulsa 19, Massachusetts 11, Georgia Tech 9 and LSU 6.

Bold - 2012 Opponent; [] First Place Votes; [RV] Receiving Votes

ESPN.COM/USA SOFTBALL TOP 25

RANK	TEAM	RECORD	PTS	PVS
1	California [20]	50-4	500	1
2	Arizona State	46-7	469	2
3	Alabama	50-7	466	3
4	Oklahoma	45-8	443	4
5	Tennessee	46-10	409	5
6	Florida	46-11	397	7
7	Louisville	53-3	348	8
8	Texas	42-10	339	10
9	Missouri	43-12	338	9
10	Louisiana-Lafayette	49-4	336	6
11	Georgia	41-15	302	11
12	Oregon	39-15	297	12
13	Texas A&M	39-16	275	14
14	UCLA	36-18	227	15
15	Arizona	35-17	222	16
16	Hawai'i	44-7	212	13
17	Stanford	38-17	159	17
18	Washington	36-17	140	18
19	Michigan	39-15	96	23
20	Florida State	46-14	94	19
21	North Carolina	41-13	84	21
22	South Florida	45-11	79	20
23	Texas Tech	40-15	70	22
24	Oregon State	34-21	41	24
25	Tulsa	41-12	35	NR

Dropped Out: No. 25 Syracuse

RV: Syracuse 29; Georgia Tech 26; Massachusetts 18; Kentucky 13; Notre Dame 12; Virginia Tech 8; LSU 7; Baylor 7; BYU 1 and South Alabama 1.

Bold - 2012 Opponent; [] First Place Votes; [RV] Receiving Votes

circle and Tammy Wray recorded the game's final out firing a strike to Allison Falcon on a chopping bunt attempt to get the speedy Kayla Braud by a step.

- Nine weekends ago when LSU notched a sweep of South Carolina [March 23-25], it marked the fourth straight season that the Tigers have posted a weekend shutout of an SEC opponent: South Carolina [2009, 2010, 2012] and Ole Miss [2011].
- 20 of LSU's 23 losses have come against NCAA Tournament teams which include No. 15 Michigan [Feb. 11], DePaul [Feb. 18], No. 3 California [Feb. 19], No. 8 Oklahoma [March 2 & 3], No. 20 Auburn [March 14], No. 2 Alabama [April 6 & 8], No. 10 Tennessee [April 13, 14 & 15], No. 22 Florida State [April 18], No. 2 Florida [April 24], No. 12 Georgia [April 27 & 28], Kentucky [May 4, 5 & 6], No. 7 Florida [May 10] and No. 9 Missouri [May 27]. 12 of those 20 setbacks listed above are to teams who reached the NCAA Super Regional round.
- A.J. Andrews has batted leadoff during 35 of LSU's last 37 games [March 23-May 27]. The lone exceptions came versus Kentucky [May 5] and Texas State [May 18].
- Andrews, an All-SEC Freshman Team pick, has collected hits in 20 of her last 39 outings [March 9-May 27] highlighted by seven multi-hit performances, which are third on the team.
- Andrews has racked up 27 of her 31 hits, scored 16 of her 19 runs and recorded 13 of her team-leading 14 stolen bases during the 39-game run.
- Andrews chipped in a 2-for-5 effort with a run scored and stolen base in LSU's 6-1 victory over No. 9 Missouri [May 26] to open the NCAA Columbia Super Regional.
- Andrews tallied a .257 hitting clip [19-for-74] and produced seven of her eight RBIs during SEC action. She garnered hits in 15 of her 25 SEC appearances. The Oldsmar, Fla., product missed the entire Mississippi State series [March 16-18] due to injury.
- Simone Heyward returned to the starting lineup during LSU's NCAA postseason opener versus Texas State [May 18]. It marked her first start since the McNeese State contest [April 17].
- Heyward knocked an infield single to open the seventh inning and scored the game's only run during a 1-0 walk-off win over Texas State. She has hit safely in six of her last 10 games when recording an at-bat [April 22-May 27].
- Heyward added a walk and a run during LSU's two-run first inning versus No. 8 Texas A&M [May 19]. For her efforts, she earned a spot on the NCAA College Station All-Regional Team.
- With LSU trailing 1-0 during the third inning of the rubber game against No. 9 Missouri [May 27], Simone Heyward provided her first extra-base hit of the season with a three-run double off MU All-American hurler Chelsea Thomas.
- In the process, Heyward also doubled her RBI total from three to six for the season.
- Heyward has scored 12 times in 2012, and LSU is 34-4 over the last two seasons when she crosses the plate.

2012 WALKOFF WINS

PENN STATE - FEBRUARY 11 - W, 1-0 [8 INNINGS]

- Beth Torina's first victory at LSU was a dramatic one. After seven scoreless innings, Ashley Langoni started the eighth with an opening walk. A wild pitch and a PSU fielding error allowed Langoni to advance to third base.
- Two batters later, Tammy Wray battled back from a 0-2 count. She worked the count full and knocked a chopper over the pitcher's circle which allowed Langoni to score the game's only run.

TROY - MARCH 10 - W, 1-0

- Dylan Supak ignited the Tigers with a leadoff single to open the seventh inning. Pinch runner Alex Boulet was called out at second base on a bang-bang play after a Kailey McCasland bunt attempt.
- Two batters later, Morgan Russell cranked a double down the left field which enabled McCasland to scamper into third base.
- With two outs and two runners in scoring position, pinch hitter Ashleigh Kuhn smoked the game-winning single to left field to allow LSU to notch a 1-0 walkoff victory.

ARKANSAS - MARCH 30 - W, 1-0

- Pinch hitter Simone Heyward drew a leadoff walk to open the seventh inning, while A.J. Andrews and Jacee Blades followed with bunt singles.
- A throwing error by Arkansas third baseman Chloe Oprzedek on Blades' hit allowed Heyward to scoot home for the win.

TEXAS STATE - MAY 18 - W, 1-0

- Simone Heyward, making her start since April 17, chopped an infield single down the third base line. Two batters later, Ashley Langoni ripped a single off the Texas State's pitchers foot.
- Juliana Santos followed with a RBI up the middle on a 1-1 offering. The ball ricocheted off the second base bag which allowed Heyward to score standing up for the game-winner.
- Ashley Langoni has contributed six of LSU's 13 home runs, banded home a team-leading 30 RBIs on the season and won LSWA Hitter of the Week [March 15].
- Langoni, an All-SEC Defensive Team selection, has vaulted her way up the LSU record book in multiple categories.
- After blasting a two-run homer at No. 2 Alabama [April 7], Langoni sits alone in fifth place on the program's all-time homers list with 29 career dingers.
- Langoni also worked her way into the No. 7 position on the career RBIs rankings. She picked up a pair of RBIs, career No. 128 and No. 129, during the first two games of the Ole Miss series [April 20-21]

TIGERS IN THE POLLS

USA TODAY/NFCA TOP 25

Preseason	No. 22 [119]
Feb. 14	No. 25 [47]
Feb. 21	RV [10]
Feb. 28	RV [15]
March 6	RV [1]
March 13	NR
March 20	RV [7]
March 27	RV [30]
April 3	No. 24 [82]
April 10	No. 22 [106]
April 17	No. 23 [62]
April 24	No. 23 [69]
May 1	No. 22 [109]
May 8	RV [23]
May 15	RV [6]
Final	

ESPN.COM/USA SOFTBALL TOP 25

Preseason	No. 20 [106]
Feb. 14	RV [26]
Feb. 21	NR
Feb. 28	RV [9]
March 6	NR
March 13	NR
March 20	RV [11]
March 27	No. 23 [43]
April 3	No. 21 [101]
April 10	No. 21 [112]
April 17	No. 23 [43]
April 24	No. 25 [42]
May 1	No. 24 [47]
May 8	RV [4]
May 15	RV [7]
Final	

CAREER RECORD WATCH • HITTING

RUNS SCORED

11	116	Lauren Castle	2004-06
12	106	Quinlan Duhon	2005-08
13	105	Ashley Langoni	2009-Current
14	100	April Janzen	1998-99, 2001-02
14	100	LaDonia Hughes	2003-04
15	99	Juliana Santos	2009-Current
16	98	Sara Fitzgerald	2001-04

HITS

19	169	Kirsten Shortridge	2009-10
20	162	Ashley Langoni	2009-2012
21	146	Juliana Santos	2009-Current
22	145	Lauren Delahoussaye	2003-06
23	144	Shaunte' Fremin	1997-2000
24	142	LaDonia Hughes	2003-04
25	138	Sara Fitzgerald	2001-04
26	137	Ashley Applegate	2008-Current

HOME RUNS

1	33	Rachel Mitchell	2007-10
2	32	Leslie Klein	2004-07
3	31	Julie Wiese	2001-04
4	30	Quinlan Duhon	2005-08
5	29	Ashley Langoni	2009-Current

RUNS BATTED IN

2	174	Tara Asbill	1997-2000
2	174	Rachel Mitchell	2007-10
4	167	Ashlee Ducote	1997-2000
5	144	Trena Peel	1999-2002
6	137	Stephanie Hastings	1998-2001
7	131	Ashley Langoni	2009-Current

MULTI-RBI GAMES

3	42	Tara Asbill	1997-2000
4	39	Ashlee Ducote	1997-2000
5	35	Christy Conner	2001-03
5	35	Ashley Langoni	2009-Current

TOTAL BASES

8	327	Julie Wiese	2001-04
9	311	Camille Harris	2003-06
10	308	Stephanie Hill	2003-06
11	300	Quinlan Duhon	2005-08
12	286	Ashley Langoni	2009-Current

WALKS

1	121	Rachel Mitchell	2007-10
2	115	Julie Wiese	2001-04
3	110	Ashley Langoni	2009-Current
4	98	Camille Harris	2003-06
5	77	Ashlee Ducote	1997-2000
6	75	Leslie Klein	2004-07
7	74	Ashley Applegate	2008-Current

SACRIFICE HITS

5	24	Jessica Mouse	2008-2011
6	20	Lauren Castle	2004-2006
7	19	Auburne Ziober	1998-2001
7	19	Aleshia Perry	2001-02
9	18	Camille Harris	2003-06
9	18	Jazz Jackson	2007-09
9	18	Morgan Russell	2009-Current

to pass Quinlan Duhon [2005-08].

- Langoni has posted hits in four of LSU's six postseason games and has hit safely during seven of her 12 outings [April 28-May 27]. For the season, she has produced a team-leading .265 batting average which included a team-high .261 clip [18-for-69] in SEC play.
- Langoni has drawn a team-leading 43 walks, including 29 free passes in her last 39 outings [March 14-May 27]. Her 43 walks are sixth among the SEC leaders.
- Langoni became the third player in program history to surpass 100 career walks during the Alabama opener [April 6]. She eclipsed former All-American Ashlee Ducote's single season mark set in 2000 during the Ole Miss opener [April 20] and enters the WCWS five walks away from matching Julie Wiese [2001-04] for second place on LSU's all-time list.
- Langoni has crossed the plate a team-high 33 times and matched her own program single-game record with four runs scored versus Utah State [Feb. 19] and at South Carolina [March 25].
- Juliana Santos and Allison Falcon not only returned to the heart of the lineup but the middle of the infield during the South Carolina series [March 23-25].
- LSU's defense has registered an errorless game in 19 of its last 33 outings starting with the South Carolina opener [March 23].
- Santos has notched hits in 31 of her 54 appearances, including 23 of her last 40 outings [March 3-14, March 23-May 27]. She missed a four-game stretch which included the entire Mississippi State series [March 16-20] due to injury.
- Santos provided the late-inning heroics with a RBI single to score Heyward to claim a 1-0 walk-off victory over Texas State [May 18]. She also chipped in 2-for-4 performance with a run scored during LSU's 6-1 triumph over No. 9 Missouri [May 26] in game one of the super regional.
- Santos has recorded 39 hits to rank second on the team. She chipped in a .257 hitting ratio [19-of-74] to go along with four of six multi-hit efforts and 11 of her 22 RBIs in conference play.
- Santos has garnered three, four-game hitting streaks [Feb. 11-18], [March 9-14] & [March 30-April 4] and a pair of three-game runs [Feb. 19-25] & [March 3-4] during the season.
- Falcon has found herself in six different spots in the batting order after starting the season at the bottom of the lineup. She has appeared in the No. 5 position during 28 of her last 31 outings [March 23-May 27]. She did not play versus Nicholls State [April 4] and No. 12 Georgia [April 29].
- During the NCAA postseason, Falcon has compiled a team-leading .294 batting average [5-for-17] and tallied four RBIs.
- Falcon has reached base in nine of her last 12 appearances [April 27-May 27]. She didn't start the Georgia finale because of Senior Day giving Cassie Troclair the start.
- Falcon, a NCAA College Station All-Regional pick, provided a RBI single to put LSU on the scoreboard during the first inning versus No. 8 Texas A&M [May 19]. She also reached on an error and scored the game's first run in the fourth inning against the Aggies [May 20].
- Falcon recorded a 2-for-3 performance and matched a career-best with three RBIs in LSU's 6-1 win over No. 9 Missouri [May 27]. Her two-run single during the third inning put LSU on the board.
- Earlier this season, Falcon missed an eight-game stretch [Feb. 25-March 4] due to injury. She has tallied a .252 batting average and notched 22 RBIs; tied with Santos for second on the team.
- Falcon produced a career-long six-game hitting streak [March 28-April 7]. She ripped a RBI single in the third inning of LSU's 3-2 win over No. 2 Alabama [April 7] which proved to be the game-winner.
- Falcon is second on the team with eight multi-hit performances only behind Langoni's 11.
- After battling an injury and appearing in only three games in 2011, Ashley Applegate has started 60 of 62 games this season with 51 of those starts coming in right field.
- Applegate has reached base in eight of her last 11 games [April 29-May 27] highlighted by a pair of 2-for-3 efforts against No. 8 Texas A&M [May 20] and No. 9 Missouri [May 27].
- Applegate equaled a career-long six-game hitting streak [March 25-April 4] being used in the lineup's No. 6 spot. She cranked a two-

CAREER RECORD WATCH • PITCHING

WINS

3	84	Emily Turner	2004-07
4	68	Ashley Lewis	1999-2001
5	59	Dani Hofer	2006-2009
6	55	Brittany Mack	2009-Current
7	54	Rachele Fico	2010-Current

STRIKEOUTS

4	623	Dani Hofer	2006-2009
5	593	Brittany Mack	2009-Current
6	567	Rachele Fico	2010-Current

STRIKEOUTS PER 7 IP

1	9.82	Britni Sneed	1999-2002
2	9.19	Dani Hofer	2006-2009
3	8.12	Kristin Schmidt	2002-2004
4	7.63	Brittany Mack	2009-Current
5	7.22	Rachele Fico	2010-Current

SHUTOUTS

3	37	Kristin Schmidt	2002-04
4	22	Rachele Fico	2010-Current
5	20	Dani Hofer	2006-2009
6	16	Ashley Lewis	1999-2001
7	15	Brandi Landry	1997-1998
7	15	Cody Trahan	2007-10
8	14	Brittany Mack	2009-Current

SAVES

1	12	Britni Sneed	1999-2002
2	8	Rachele Fico	2010-Current
3	7	Kristin Schmidt	2002-04
4	4	Sarah KnifeChief	1997-98
4	4	Emily Turner	2004-07
4	4	Dani Hofer	2006-09
7	3	Casey Faile	2008-10
7	3	Brittany Mack	2009-12

- run single during the sixth inning to vault LSU to a 3-2 comeback win in the Arkansas finale [April 1].
- Applegate registered a 2-for-3 effort with a triple and scored the game's only run during LSU's 1-0 victory at No. 2 Florida [April 24].
- Tammy Wray has found a way on-base during 19 of her last 26 games [April 6-May 27]. During the stretch, she has drawn 12 of her 22 walks and notched 10 of her 19 hits.

LSU VS. NO. 1

DAY	OPPONENT	RESULT
03/01/97	at Arizona	L, 7-4
03/05/00	vs. Washington (Columbus, Ga.)	L, 3-0
02/14/03	vs. UCLA (Las Vegas, Nev.)	L, 2-0
05/26/06	at Arizona	L, 5-0
05/26/06	at Arizona	W, 3-2
05/27/06	at Arizona	L, 14-5
04/28/07	Tennessee	L, 2-1
04/28/07	Tennessee	W, 5-1
04/29/07	Tennessee	W, 3-2
04/18/09	Florida	L, 3-0
04/18/09	Florida	L, 1-0
04/19/09	Florida	L, 12-0
03/11/11	at Georgia	L, 6-3
03/12/11	at Georgia	L, 8-0
03/13/11	at Georgia	L, 12-0
04/08/11	Alabama	W, 2-1 [14]
04/09/11	Alabama	W, 3-1 [10]
04/10/11	Alabama	W, 2-0

LSU MULTI-HIT GAMES

PLAYER	2	3	4+	SEASON	CAREER
Ashley Langoni	10	1	-	11	36
Ashley Applegate	6	-	-	6	29
Juliana Santos	4	2	-	6	29
Simone Heyward	1	-	-	1	12
Allison Falcon	7	1	-	8	11
Morgan Russell	2	-	-	2	10
Jacee Blades	3	-	-	3	9
Lauren Houston	2	-	-	2	9
Cassie Trosclair	-	-	-	0	8
Tammy Wray	1	-	-	1	8
A.J. Andrews	7	-	-	7	7
Dylan Supak	5	-	-	5	5
Ashleigh Kuhn	3	-	-	3	3
Kailey McCasland	3	-	-	3	3
Heidi Pizer	-	-	-	0	2
Rikki Alcaraz	1	-	-	1	1
Alex Boulet	-	-	-	0	1

LSU MULTI-RBI GAMES

PLAYER	2	3	4+	SEASON	CAREER
Ashley Langoni	4	4	-	8	35
Juliana Santos	6	1	-	7	22
Ashley Applegate	1	-	-	1	13
Morgan Russell	3	-	-	3	11
Tammy Wray	1	-	-	1	8
Allison Falcon	3	1	-	4	7
Lauren Houston	1	-	-	1	5
Heidi Pizer	1	-	-	1	5
Dylan Supak	5	-	-	5	5
Ashleigh Kuhn	2	-	1	3	3
A.J. Andrews	1	1	-	2	2
Cassie Trosclair	1	-	-	1	2
Rikki Alcaraz	1	-	-	1	1
Jacee Blades	1	-	-	1	1
Simone Heyward	-	1	-	1	1
Kailey McCasland	-	1	-	1	1
Tammy Vermuelen	1	-	-	1	1

LSU HITTING STREAKS

PLAYER	SEASON	CURRENT	CAREER
Jacee Blades	3	-	7
Ashley Langoni	4	1	7
Ashley Applegate	6	-	6
Allison Falcon	6	-	6
Juliana Santos	4	-	6
Tammy Wray	3	-	6
Rikki Alcaraz	5	-	5
Simone Heyward	3	2	5
Morgan Russell	2	-	5
Heidi Pizer	4	-	4
Lauren Houston	2	2	3
Ashleigh Kuhn	3	-	3
Kailey McCasland	3	-	3
Dylan Supak	3	-	3
Cassie Trosclair	3	3	3
A.J. Andrews	2	-	2
Alex Boulet	-	-	2
Katie Guillory	-	-	2
Tammy Vermeulen	2	2	2
Brittany Mack	1	-	1

- Wray's opening walk in the third inning of the rubber game versus No. 9 Missouri [May 27] ignited LSU's rally for a three-run frame.
- Wray's leadoff single led to LSU's lone run during a 1-0 victory over No. 12 Georgia [April 29]. She also coaxed a free pass to fill the bases which led to a two-run frame versus No. 14 Texas A&M [May 20].
- Morgan Russell has tallied a 4-for-27 run over her last 12 starts at catcher [April 20-May 27]. However, she produced two RBIs highlighted by a RBI double to put the finishing touches of LSU's 6-1 victory over No. 9 Missouri [May 26].
- Russell's 18 career sacrifice hits are tied for ninth in program history. Her last successful sacrifice came against Ole Miss [April 22].
- Defensively, Russell has put a close to a pair of impressive stolen base streaks in SEC play. She ended Alabama's Jennifer Fenton NCAA-record 74-base run [April 7] and stopped Tennessee's Raven Chavanne streak of 40 consecutive steals [April 15].
- Dylan Supak has produced hits in 14 of her 38 starts on the season, but has tallied a 7-for-54 clip during her last 29 games since SEC action began [March 14-May 27].
- Supak has reached base in 11 of her last 23 plate appearances over her last 11 outings [April 28-May 27] which include seven walks, two singles and two hit batters. Her opening free passes led to third-inning runs during the first two games of the NCAA Columbia Super Regional.
- Supak's five-RBI performances are third on the team only behind Langoni and Santos. She is fifth on the squad with 11 total RBIs.
- Jacee Blades has collected hits in 12 of her last 26 outings since

- the Mississippi State opener [March 16-May 18]. She registered 19 of those appearances as LSU's starting designated player.
- However, Blades has compiled a 0-for-18 stretch over her last six games [April 22-May 18]. She notched a pair of three-game hitting streaks [March 20-24 and March 28-31] and registered hits in two of three games in four of LSU's eight SEC weekend series.
- Blades scored in all three of her pinch running outings against No. 9 Missouri [May 26-27] at the NCAA Columbia Super Regional.
- In her 27 starts at catcher, Lauren Houston has reached base in 17 of those games. She has compiled a .425 on-base percentage being hit-by-a-pitch on 13 occasions, which is tied for fifth in the SEC rankings.
- Houston ended a 0-for-12 stretch at the plate [March 31-April 21] with a timely two-out, RBI single to score Applegate in LSU's 1-0 victory over No. 2 Florida [April 24].
- Cassie Trosclair made five straight starts [April 29-May 10] at designated player prior to the NCAA College Station Regional.
- Trosclair has notched hits in seven of her last nine outings where she has recorded an at-bat [April 17-May 27]. She notched a pair of pinch hits highlighted by a triple to open the seventh inning during LSU's 6-1 game one win over No. 9 Missouri [May 26].
- Trosclair picked up RBIs during the first two games of the Kentucky series [May 4 & 5] with a sacrifice fly and RBI single, respectively. She opened the run and deposited a two-out, RBI single to provide a critical insurance run during the 5th inning of a 2-1 win over McNeese State [April 17].

RPI REPORT • NATIONAL RANKINGS • AS OF 05/14/12

Overall Ranking	27 [39-23]
Record vs. RPI 1-25	8-15
Home	2-4
Away	6-8
Neutral	0-3
Record vs. RPI 26-50	11-6
Home	9-1
Away	0-4
Neutral	2-1
Record vs. RPI 51-100	5-2
Home	5-2
Away	0-0
Neutral	0-0
Record vs. RPI 101-150	8-0
Home	4-0
Away	4-0
Neutral	0-0
Record vs. RPI 151 +	7-0
Home	4-0
Away	1-0
Neutral	2-0

OPPONENT RPI	RANK [RECORD]
SEC	
Alabama	2 [1-2]
Tennessee	5 [0-3]
Florida	7 [1-2]
Georgia	15 [1-2]
LSU	27
Auburn	31 [1-1]
Mississippi State	35 [3-0]
Kentucky	36 [0-3]
Arkansas	47 [3-0]
Ole Miss	95 [2-1]
South Carolina	101 [3-0]

NCAA	RANK [RECORD]
Texas A&M	8 [2-0]
Missouri	14 [2-1]
Texas State	39 [1-0]

NON-CONFERENCE	RANK [RECORD]
California	1 [0-1]
Oklahoma	6 [0-2]
Florida State	16 [0-1]
Georgia Tech	21 [1-0]
Michigan	25 [0-1]
DePaul	26 [0-1]
Oklahoma State	38 [1-1]
South Alabama	43 [2-0]
Troy	67 [2-0]
Penn State	105 [1-1]
McNeese State	109 [3-0]
Mississippi Valley State	148 [2-0]
Louisiana Tech	154 [1-0]
Utah State	180 [1-0]
Cal State Northridge	211 [1-0]
Nicholls State	227 [2-0]
Southeastern Louisiana	243 [1-0]
Alcorn State	283 [1-0]

TOP 100 NCAA TEAM RANKINGS	RANK
ERA [1.51]	9th
W-L Percentage [.629]	62nd
Fielding Percentage [.965]	69th
Stolen Bases Per Game [1.15]	71st

TOP 100 NCAA PLAYER RANKINGS	PLAYER	RANK
ERA [0.92]	Rachele Fico	1st
Shutouts [13]	Rachele Fico	T-5th
Hits Allowed Per 7 IP [4.45]	Rachele Fico	18th
Walks Per Game [0.69]	Ashley Langoni	39th
Strikeouts Per 7 IP [8.00]	Brittany Mack	36th
Strikeouts Per 7 IP [6.80]	Rachele Fico	100th

NCAA TOURNAMENT GAME-BY-GAME

Overall	43-27		
Regionals	35-16	Home	15-8
Super Regionals	3-5	Away	9-11
World Series	5-4	Neutral	19-8

1998 NCAA REGIONALS • SEATTLE, WASH. [2-2]

05/15/98	Long Beach State		W, 2-0
05/16/98	Washington	L, 9-0 [6 Inn]	
05/16/98	Long Beach State		W, 5-4
05/17/98	Washington		L, 6-0

1999 NCAA REGIONALS • BATON ROUGE [2-2]

05/20/99	Southern	W, 12-0 [5 Inn]	
05/21/99	Oregon State		L, 3-0
05/22/99	Oklahoma		W, 7-3
05/22/99	Southern Miss		L, 4-3

2000 NCAA REGIONALS • BATON ROUGE [3-2]

05/18/00	Northwestern State		W, 7-1
05/19/00	Louisiana-Lafayette		L, 4-1
05/20/00	Hofstra		W, 2-1
05/20/00	Southern Miss	W, 1-0 [13 Inn]	
05/21/00	Southern Miss		L, 1-0 [9 Inn]

2001 NCAA REGIONALS • BATON ROUGE [4-0]

05/17/01	Cornell	W, 8-0 [6 Inn]	
05/18/01	Penn State		W, 2-1
05/19/01	Arizona State		W, 3-2
05/20/01	Louisiana-Lafayette		W, 2-1

2001 WCWS • OKLAHOMA CITY, OKLA. [2-2]

05/24/01	Stanford	L, 2-1 [8 Inn]	
05/26/01	Iowa		W, 2-1
05/26/01	Oklahoma	W, 2-1 [13 Inn]	
05/27/01	UCLA		L, 6-0

2002 NCAA REGIONALS • LAFAYETTE [3-2]

05/16/02	Northwestern State	W, 3-2 [10 Inn]	
05/18/02	Louisiana-Lafayette		W, 5-2
05/18/02	Arizona State	L, 3-2 [8 Inn]	
05/18/02	Massachusetts		W, 1-0
05/19/02	Arizona State		L, 4-1

2003 NCAA REGIONALS • AUSTIN, TEXAS [1-2]

05/15/03	Hawai'i		W, 9-4
05/16/03	Texas	L, 8-0 [6 Inn]	
05/16/03	Arizona State		L, 4-1

2004 NCAA REGIONALS • WACO, TEXAS [4-0]

05/20/04	Texas A&M-Corpus Christi		W, 4-0
05/21/04	Seton Hall		W, 3-0
05/22/04	Baylor	W, 7-3 [8 Inn]	
05/23/04	Illinois		W, 4-1

2004 WCWS • OKLAHOMA CITY, OKLA. [3-2]

05/27/04	Michigan	W, 3-2 [13 Inn]	
05/28/04	UCLA		L, 2-0
05/30/04	Florida State		W, 2-1
05/30/04	California		W, 4-1
05/30/04	California		L, 4-1

2006 NCAA REGIONALS • BATON ROUGE [3-0]

05/19/06	Princeton		W, 5-0
05/20/06	Louisiana-Lafayette	W, 7-6 [10 Inn]	
05/20/06	Louisiana-Lafayette		W, 5-4

- Off the bench, Alex Boulet has scored during eight of her last 20 pinch running appearances [March 18-May 27].
- Boulet has notched nine of her 12 steals since April 4 highlighted by a run of four straight outings [April 18-22]. Her 12 stolen bases are just outside the SEC's Top 15.
- Rikki Alcaraz has scored runs and drawn a quartet of walks in her last three outings as the starting second baseman [March 18-20, April 4]. She ignited LSU's five-run fifth inning versus Nicholls State [April 4] with a leadoff double.
- Earlier this season, Alcaraz put together a five-game hitting streak [Feb. 21-26] and claimed Tiger Invitational All-Tournament honors.
- Jacee Blades, Ashleigh Kuhn and Heidi Pizer have registered a combined 8-for-11 clip as pinch hitters. The rest of the LSU team has garnered a 7-for-38 mark.
- Kuhn has driven home 11 of her 13 RBIs during her last 15 outings [March 7-28, April 4-May 4] but has tallied a 2-for-25 clip at the plate in SEC action.
- Kailey McCasland has made 11 starts at third base and eight starts at designated player on the season.
- McCasland has produced two seventh inning, pinch-hit singles at No. 10 Tennessee [April 14] and in game one, a RBI shot to right field, at No. 2 Florida [April 24].
- McCasland broke a 0-0 tie versus No. 8 Texas A&M [May 20] with a pinch-hit sacrifice fly for LSU's first run in the regional final.
- In the circle, Rachele Fico [7] and Brittany Mack [14] have received only 21 total runs of support during their combined 23 losses on the season.
- During the NCAA postseason, the Fico-Mack duo is 5-1 and been touched for only three earned runs over 47 innings of work en route to a sparkling 0.45 ERA.
- Fico and Mack both earned spots on the NCAA College Station All-Region Team after they limited the opposition to one run on seven hits, a paltry .101 hitting clip and racked up 19 strikeouts.
- Fico, an NFCA All-South Region and All-SEC Second Team honoree, is 20-11 with a blistering 0.92 ERA which is tops in the nation. The six-time Louisiana Pitcher of the Week has been touched up for just 29 earned runs in 220.1 innings of work.
- Fico fired consecutive two-hitters versus Texas State [May 18] and No. 8 Texas A&M [May 19] to keep LSU in the winner's bracket en route to the unanimous selection of the regional's MVP.
- Fico followed those performances with victories in games one and three against No. 9 Missouri [May 26-27]. During Sunday's rubber game, she allowed just one run on two infield hits and sat down 12 of the final 14 batters she faced.
- Earlier this season, Fico tossed four straight SEC shutouts [March 18-30] sparked by 11 Ks during a three-hit shutout of NCAA Tournament participant Arkansas [March 30].
- Seven of Fico's 11 losses on the season have been decided by either a 1-0, 2-0 or 2-1 margin. 10 of those 11 setbacks also have come versus RPI Top 35 opponents.
- Fico added a four-hit gem versus Georgia [April 29] to claim her 50th career victory. She became the seventh hurler in program history to reach that impressive feat.
- During the UGA opener [April 27], Fico gutted out 15 frames without allowed an earned run. She picked up a season's best 13 strikeouts which enabled her to become the sixth pitcher in LSU history to surpass 500 career Ks.
- Fico has tossed 13 overall shutouts to rank in a fifth-place tie nationally. She has fired a quartet of one-hitters against Louisiana Tech [Feb. 12], Utah State [Feb. 19], McNeese State [Feb. 25] and Troy [March 10].
- For her career, Fico has totaled 22 shutouts. She moved past Dani Hofer [2006-09] into fourth place with her two-hit bid against Texas State [May 18].
- Fico became only the second pitcher during the 2012 season to defeat No. 2 Alabama [April 7]. She accomplished the impressive feat on the biggest of stages in-front of a then Rhoads Stadium record crowd of 3,521 spectators.
- Fico finished the game in-style by recording six of her nine strikeouts and retiring nine of the final 11 batters she faced over the

NCAA TOURNAMENT GAME-BY-GAME

2006 NCAA SUPER REGIONALS • TUCSON, ARIZ. [1-2]

05/26/06	Arizona		L, 5-0
05/27/06	Arizona		W, 3-2
05/27/06	Arizona		L, 14-5 [5 Inn]

2007 NCAA REGIONALS • PALO ALTO, CALIF. [3-0]

05/17/07	Cal State Northridge		W, 3-2
05/18/07	Fresno State		W, 1-0 [9 Inn]
05/19/07	Stanford		W, 11-5

2007 NCAA SUPER REGIONALS • TEMPE, ARIZ. [0-2]

05/25/07	Arizona State	L, 1-0 [10 Inn]	
05/26/07	Arizona State		L, 7-4

2008 NCAA REGIONALS • BATON ROUGE [2-2]

05/16/08	Mississippi Valley State	W, 8-0 [5 Inn]	
05/17/08	Louisiana-Lafayette		L, 9-4
05/17/08	East Carolina	W, 9-1 [5 Inn]	
05/18/08	Louisiana-Lafayette		L, 6-3

2009 NCAA REGIONALS • TEMPE, ARIZ. [2-2]

05/15/09	Cal State Fullerton		W, 3-2
05/16/09	Arizona State		W, 10-2
05/17/09	Arizona State		L, 6-4
05/17/09	Arizona State		L, 5-0

2010 NCAA REGIONALS • BATON ROUGE [1-2]

05/21/10	McNeese State		W, 6-0
05/22/10	Louisiana-Lafayette		L, 1-0
05/22/10	Texas A&M		L, 1-0

2011 NCAA REGIONALS • COLLEGE STATION, TEXAS [2-2]

05/20/11	Syracuse	L, 3-0 [11 Inn]	
05/21/11	Sacred Heart	W, 10-0 [6 Inn]	
05/21/11	Syracuse		W, 5-0
05/22/11	Texas A&M		L, 3-1 [9 Inn]

2012 NCAA REGIONALS • COLLEGE STATION, TEXAS [3-0]

05/18/12	Texas State		W, 1-0
05/19/12	Texas A&M		W, 2-0
05/20/12	Texas A&M		W, 2-1

2012 NCAA SUPER REGIONALS • COLUMBIA, MO. [2-1]

05/26/12	Missouri		W, 6-1
05/27/12	Missouri		L, 5-1 [12 Inn]
05/27/12	Missouri		W, 3-1

2012 COMEBACK WINS

MISSISSIPPI STATE • MARCH 16 • W, 10-7

- Down 4-1 in the third inning, the Tigers sent 12 batters to the dish and were ignited by Heidi Pizer, Ashley Applegate and Jacee Blades consecutive singles to fill the bases.
- An illegal pitch made it 4-2 before an Ashley Langoni walk reloaded the bases.
- Allison Falcon ripped a RBI single to left field to pull LSU back to within 4-3 before Dylan Supak deposited a 1-0 offering for a two-run single to vault the Tigers to a 5-4 edge.
- The Bulldogs turned to Lindsey Dunlap out of the bull pen. She proceeded to plunk Kailey McCasland, Tammy Wray and Morgan Russell in succession to allow LSU to grab a 7-4 advantage.

MISSISSIPPI STATE • MARCH 17 • W, 3-1

- Trailing 1-0, the third inning was kind to the Tigers for the second straight contest.
- Lauren Houston was hit-by-a-pitch to open the frame. Two batters later, Ashley Applegate cranked a single to centerfield. LSU loaded the bases when Jacee Blades dropped down a textbook bunt single down the first base line.
- A passed ball by MSU catcher Ka'ili Smith enabled Houston to scamper home and knot the score at 1-1.
- Down 1-2 in the count, Allison Falcon smoked a double past the diving attempt of Bulldog left fielder Jessica Cooley. The ball one-hopped off the left field wall which cleared the bases to give LSU a 3-1 advantage.

GEORGIA TECH • MARCH 20 • W, 2-1

- Behind 1-0 in the fourth inning, Dylan Supak drew a leadoff walk to spark the Tigers. Pinch runner Alex Boulet advanced to second base on an Ashley Applegate ground out and scooted over to third base on a Lauren Houston fly ball to right field.
- The frame stayed alive as Rikki Alcaraz drew a walk to place runners on the corners. That set the stage for Boulet, who alertly stole home to even the tally at 1-1 after a pickoff attempt of Alcaraz at first base. On the throw home, Alcaraz moved up to second base.
- On a full count offering, Tammy Wray ripped a RBI single through the middle to vault LSU ahead by a 2-1 margin.

ARKANSAS • APRIL 1 • W, 3-2

- Down 2-1 with one out in the sixth inning, LSU pieced together a trio of singles from Ashley Langoni, Juliana Santos and Allison Falcon to fill the bases.
- That set up Ashley Applegate, who crushed a 0-1 offering past the glove of Arkansas pitcher Kimmy Beasley. Langoni crossed the plate with the tying run, while Santos scooted home from second base and slid underneath the tag at home for the go-ahead run.

NICHOLLS STATE • APRIL 4 • W, 6-1

- LSU erased an early 1-0 deficit to extend its season's long winning streak to 12 games.
- The Tigers responded with the equalizer in the third inning. Ashley Langoni blasted a one-out triple off the right field fence and came around to score on a Santos sacrifice fly.
- LSU exploded for five runs during the fifth inning highlighted by a Juliana Santos RBI single, an Ashleigh Kuhn two-run double and a Morgan Russell RBI single.

MISSOURI • MAY 27 • W, 3-1

- Facing elimination and 1-0 deficit in the rubber game of the NCAA Columbia Super Regional, LSU struck for a three-spot during the third inning.
- Morgan Russell was hit-by-pitch sandwiched between walks to Tammy Wray and A.J. Andrews. On a 2-1 offering, Simone Heyward cleared the bases with her first extra-base hit of 2012.

final three innings.

- Fico also provided a sparkling performance during game one of a doubleheader at No. 2 Florida [April 24]. She had the Gators down to their final strike and garnered 11 Ks.
- Fico reeled off an impressive run of seven straight victories [March 16-April 8], which came to a close at No. 10 Tennessee [April 14].
- Fico has limited opponents to a .177 hitting clip and notched 213 strikeouts to rank third and fourth, respectively, in those categories among the SEC leaders.
- Brittany Mack is 15-12 with a 2.21 ERA. She had dropped seven of her last nine decisions [April 6-May 10] coming into NCAA post-season play. Her 193 strikeouts check in at the No. 8 spot among the SEC leaders.
- Mack, a NFCA All-South Region Second-Team honoree, punched LSU's ticket to the super regionals and held No. 8 Texas A&M [May 20] to one run on three hits. She tallied seven strikeouts and navigated six scoreless frames to open the contest.
- In her lone appearance at the NCAA Columbia Super Regional, Mack racked up a career-best 17 strikeouts. The 17 Ks tied for the third-highest single game total in LSU history. However, she was dealt the tough-luck loss in 12 innings as LSU's defense committed four errors which led to five unearned runs.
- Mack turned in a stellar effort with a four-hit shutout on No. 2 Florida [April 24]. She garnered eight strikeouts, including the final out with two runners on-base during the seventh inning.
- Earlier in the season, Mack produced nine consecutive wins [March 3-April 1] which came to a close during the series opener at No. 2 Alabama [April 6].
- During the nine-game run, Mack carried a no-hitter one out into the seventh inning at South Carolina [March 24]. In the process, she became the fifth pitcher in LSU history to eclipse 500 career strikeouts and the sixth hurler to reach the 50-win plateau. The senior right-hander picked up SEC Co-Pitcher of the Week [March 26] for her efforts.
- Mack was selected as the No. 1 pick during the National Pro Fast-pitch's Collegiate Draft [March 7]. It marks the third straight year the SEC has had the No. 1 pick in the NPF Draft.
- Meghan Patterson is 4-0 and has racked up 40 strikeouts in her 38.1 innings of work, including a career-best 13 Ks against Alcorn State [Feb. 26].
- Patterson has been touched up for two runs on 18 hits in her last 32 frames of action [Feb. 26-April 17]. She made her SEC season debut at South Carolina [March 25].
- Patterson garnered consecutive complete game victories versus Nicholls State [April 4] and McNeese State [April 17].

SERIES HISTORY - LSU VS. OKLAHOMA/USF

AT A GLANCE [OKLAHOMA]

Overall	LSU leads 6-5
Home	Series tied at 1-1
Away	LSU leads 3-1
Neutral	Oklahoma leads 3-2
WCWS	LSU leads 1-0
Streak	L-3

GAME-BY-GAME

Date	Result	Location
02/27/99	L, 5-2	Columbus, Ga.
05/22/99	W, 7-3	Baton Rouge
03/10/00	W, 3-0	Norman
05/26/01	W, 2-1 (13)	Oklahoma City
02/23/03	W, 7-4 (9)	Columbus, Ga.
02/07/04	L, 6-4	Baton Rouge
03/04/06	W, 2-1	Norman
03/05/06	W, 6-5 (8)	Norman
02/06/09	L, 8-0 (5)	Honolulu, Hawaii
03/02/12	L, 7-0	Norman
03/03/12	L, 5-0	Oklahoma City

AT A GLANCE [SOUTH FLORIDA]

Overall	LSU leads 3-0
Home	NA
Away	NA
Neutral	LSU leads 3-0
WCWS	NA
Streak	W-3

GAME-BY-GAME

Date	Result	Location
02/19/00	W, 5-4	Austin, Texas
02/19/00	W, 5-0	Austin, Texas
03/16/08	W, 2-1 (8)	Clearwater, Fla.

HONORS & AWARDS

RIKKI ALCARAZ

- Tiger Invitational All-Tournament Team [02/26]
- LSU's Cox Communications Academic Center Student-Athlete of the Month [April 2012]

A.J. ANDREWS

- All-SEC Freshman Team [05/09]

ASHLEY APPEGATE

- LSU's nominee for SEC's Brad Davis Community Service Post-Graduate Scholarship [03/28]

ALLISON FALCON

- NCAA College Station All-Regional Team [05/21]
- CoSIDA All-District First Team [05/04]
- Purple & Gold Challenge All-Tournament Team [03/11]

SIMONE HEYWARD

- NCAA College Station All-Regional Team [05/21]

RACHELE FICO

- NCAA College Station All-Regional Team & MVP [05/21]
- NFCA All-South Region First Team [05/17]
- All-SEC Second Team [05/09]
- USA Softball Player of the Year Top 25 Finalist [04/11]
- LSWA Pitcher of the Week [02/15, 02/29, 04/04]
- LSWA Pitcher of the Week [04/10, 04/27, 05/03]
- Purple & Gold Challenge All-Tournament Team [03/11]
- Tiger Invitational All-Tournament Team [02/26]
- Tiger Classic All-Tournament Team [02/12]

ASHLEIGH KUHN

- Purple & Gold Challenge All-Tournament Team [03/11]

ASHLEY LANGONI

- All-SEC Defensive Team [05/09]
- LSWA Hitter of the Week [03/15]
- Purple & Gold Challenge All-Tournament Team [03/11]

BRITTANY MACK

- NCAA College Station All-Regional Team [05/21]
- NFCA All-South Region Second Team [05/17]
- SEC Co Scholar-Athlete of the Year [05/09]
- SEC Community Service Team [05/07]
- LSU's nominee for SEC's H. Boyd McWhorter Scholar-Athlete Post-Graduate Scholarship [03/28]
- SEC Co-Pitcher of the Week [03/26]
- LSWA Pitcher of the Week [03/28]
- LOWE'S Senior Class Finalist [02/15]

MEGHAN PATTERSON

- Purple & Gold Challenge All-Tournament Team [03/11]
- Tiger Invitational All-Tournament Team [02/26]

MORGAN RUSSELL

- Tiger Invitational All-Tournament Team [02/26]

DYLAN SUPAK

- Purple & Gold Challenge All-Tournament Team [03/11]
- Tiger Invitational All-Tournament Team [02/26]

NCAA TOURNAMENT INDIVIDUAL GAME RECORDS

OFFENSE

At-Bats [Individual - 7x - Last Time Listed]

6	Stephanie Hill [Louisiana-Lafayette]	05/20/06
6	Leslie Klein [Louisiana-Lafayette]	05/20/06
6	Killian Roessner [Louisiana-Lafayette]	05/20/06

At-Bats [Team - 2x - Last Time Listed]

48	Louisiana-Lafayette	05/20/06
----	---------------------	----------

Runs Scored [Individual]

3	Andrea Smith [at Stanford]	05/19/07
---	----------------------------	----------

Runs Scored [Team]

13	Southern	05/20/06
----	----------	----------

Hits [Individual]

4	Leslie Klein [vs. Illinois]	05/23/04
4	Tara Asbill [vs. Long Beach State]	05/16/98

Hits [Team]

16	Louisiana-Lafayette	05/20/06
----	---------------------	----------

Doubles [Individual - 2x - Last Time Listed]

2	Ashlee Ducote [Southern]	05/20/99
---	--------------------------	----------

Doubles [Team]

4	Long Beach State	05/16/98
---	------------------	----------

Triples [Individual - 7x - Last Time Listed]

1	Cassie Trosclair [at Missouri]	05/26/12
1	Ashley Langoni [vs. Syracuse]	05/21/11

Triples [Team - 7x - Last Time Listed]

1	Missouri	05/27/12
---	----------	----------

Home Runs [Individual - 4x - Last Time Listed]

2	Ashley Langoni [at Arizona State]	05/17/09
---	-----------------------------------	----------

Home Runs [Team]

5	Stanford	05/19/07
5	Hawai'i	05/15/03

RBIs [Individual]

5	Rachel Mitchell [at Stanford]	05/19/07
---	-------------------------------	----------

RBIs [Team]

11	Stanford	05/19/07
----	----------	----------

Walks [Individual - 11x - Last Time Listed]

2	Ashley Applegate [at Missouri]	05/26/12
2	Simone Heyward [at Missouri]	05/26/12
2	Tammy Wray [at Texas A&M]	05/19/12

Walks [Team]

7	Missouri	05/26/12
---	----------	----------

Hit-by-Pitches [Individual]

2	Anissa Young [at Texas A&M]	05/22/11
2	Shannon Stein [at Stanford]	05/19/07

Hit-by-Pitches [Team - 8x - Last Time Listed]

2	Texas A&M	05/22/11
---	-----------	----------

Stolen Bases

4	Cassie Trosclair [vs. Sacred Heart]	05/21/11
---	-------------------------------------	----------

Stolen Bases [Team]

7	Sacred Heart	05/21/11
---	--------------	----------

PITCHING

Inning Pitched [Individual]

13	Kristin Schmidt [vs. Michigan]	05/27/04
13	Britni Sneed [vs. Oklahoma]	05/26/01

Strikeouts [Individual]

19	Britni Sneed [vs. Oklahoma]	05/26/01
18	Rachele Fico [vs. Syracuse]	05/20/11
17	Brittany Mack [at Missouri]	05/27/12

Fewest Runs [Individual - 9x - Min. 7 IP - Last Time Listed]

0	Rachele Fico [at Texas A&M]	05/19/12
---	-----------------------------	----------

Fewest Runs [Team - 15x - Last Time Listed]

0	Sacred Heart & Syracuse	05/21/11
---	-------------------------	----------

Most Runs [Individual]

9	Sarah KnightChief [at Washington]	05/16/98
---	-----------------------------------	----------

Most Runs [Team]

14	Arizona	05/27/06
----	---------	----------

Fewest Hits [Individual - Min. 7 IP]

1	Ashley Lewis [Penn State]	05/18/01
---	---------------------------	----------

Fewest Hits [Team - Min. 7 IP]

1	Penn State	05/18/01
---	------------	----------

Most Hits [Individual - 3x - Last Time Listed]

9	Emily Turner [at Arizona]	05/26/06
---	---------------------------	----------

Most Hits [Team]

18	Arizona	05/27/06
----	---------	----------

FIELDING

Assists [Individual - 5x - Last Time Listed]

6	Tammy Wray [at Missouri]	05/27/12
6	Tammy Wray [at Texas A&M]	05/19/12

Assists [Team]

18	Iowa	05/26/01
----	------	----------

Errors [Individual - 2x - Last Time Listed]

4	Andrea Smith [at Arizona]	05/26/06
---	---------------------------	----------

Errors [Team - 3x - Last Time Listed]

4	Missouri	05/27/12
---	----------	----------

THE LAST TIME A TIGER ...

Scored three runs in a game:	Ashley Langoni vs. No. 5 Florida, 05/14/10
Scored four runs in a game:	Ashley Langoni at South Carolina, 03/25/12
Had four hits in a game:	Juliana Santos vs. Louisiana Tech, 02/13/11
Had five hits in a game:	Juliana Santos at Arkansas, 04/02/11
Had five RBIs in a game:	Ashley Langoni at Arkansas, 04/01/11
Had six RBIs in a game:	Vanessa Soto vs. Centenary, 02/10/07
Had seven RBIs in a game:	Stephanie Hill vs. Nicholls State, 04/01/04
Had two doubles in a game:	Dylan Supak at South Carolina, 03/23/12
Had three doubles in a game:	Tessa Lynam vs. Jackson State, 02/28/03
Had two triples in a game:	Leslie Klein vs. Alcorn State, 02/20/04
Had two home runs in a game:	Anissa Young vs. Fordham, 02/26/10
Hit a grand slam:	Anissa Young [1st] & Ashley Langoni [2nd] at Arizona State, 05/16/09
Lead off game with home run:	Kirsten Shortridge at Hawai'i, 02/07/09
Lead off inning with home run:	Allison Falcon at Kentucky[3rd], 05/04/12
Hit an inside-the-park home run:	Shannon Stein vs. Auburn, 05/08/08
Hit a walk-off home run to win regulation game:	Kirsten Shortridge vs. Kentucky, 05/13/10
Hit a walk-off home run to win an extra inning game:	Anissa Young vs. No. 1 Alabama [10th], 04/09/11
Had eight total bases in a game:	Ashley Langoni vs. Syracuse, 05/21/11
Had nine total bases in a game:	Kristen Hobbs vs. Missouri, 02/10/07
Had 10 total bases in a game:	Anissa Young vs. Southeastern Louisiana, 02/24/10
Had 13 total bases in a game:	Ashlee Ducote at South Carolina [Gm 2], 04/14/00
Drew three walks in a game:	Ashley Langoni at South Carolina, 03/25/12
Drew four walks in a game:	Ashley Langoni vs. Penn State, 02/11/12
Drew two intentional walks in a game:	Killian Roessner vs. Troy, 03/11/08
Drew three intentional walks in a game:	Stephanie Hill at Ole Miss [Gm 1], 04/17/04
Hit by pitch twice in a game:	Lauren Houston at McNeese State, 03/28/12
Struck out three times in a game:	A.J. Andrews at No. 10 Missouri, 05/26/12
Struck out four times in a game:	Alex Boulet vs. No. 1 Alabama, 04/08/11
Struck out five times in a game:	Ashley Lewis vs. Southern Miss, 05/20/00
Had two sacrifice hits in a game:	Ashley Langoni vs. No. 1 Alabama, 04/08/11
Had three sacrifice hits in a game:	Tara Asbill at Alabama [Gm 1], 05/05/00
Had two sacrifice flies in a game:	Juliana Santos at Mississippi State, 04/28/11
Had two stolen bases in a game:	Alex Boulet vs. Ole Miss, 04/21/12
Had three stolen bases in a game:	Juliana Santos vs. Louisiana Tech, 02/13/11
Had four stolen bases in a game:	Cassie Troclair vs. Sacred Heart, 05/21/11
Seven-inning complete-game shutout:	Rachele Fico at No. 14 Texas A&M, 05/19/12
Extra-inning complete-game shutout:	Rachele Fico vs. Penn State [8 IP], 02/11/12
Seven-inning complete-game one-hitter:	Brittany Mack at South Carolina, 03/24/12
Tossed a perfect game:	Rachele Fico vs. Southeastern Louisiana [5 IP], 02/16/11
Tossed a no-hitter:	Meghan Patterson vs. Southern [5 IP], 02/18/11
Seven-inning no-hitter:	Emily Turner at Arkansas [Gm 2], 04/21/07
Recorded 12 strikeouts in a game:	Brittany Mack vs. No. 6 Tennessee, 04/15/11
Recorded 13 strikeouts in a game:	Rachele Fico vs. No. 12 Georgia, 04/27/12
Recorded 14 strikeouts in a game:	Brittany Mack vs. No. 1 Alabama, 04/08/11
Recorded 15 strikeouts in a game:	Dani Hofer vs. Auburn, 03/21/08
Recorded 16 strikeouts in a game:	Dani Hofer vs. South Florida, 03/16/08
Recorded 17 strikeouts in a game:	Brittany Mack at No. 10 Missouri [Gm 1], 05/27/11
Recorded 18 strikeouts in a game:	Rachele Fico vs. Syracuse, 05/20/11
Recorded 19 strikeouts in a game:	Britni Sneed vs. Oklahoma, 05/26/01
Pitched 10+ innings:	Rachele Fico vs. No. 1 Alabama, 04/11/11
Pitched 11+ innings:	Brittany Mack at No. 10 Missouri [Gm 1, 12 IP], 05/26/12
Pitched 13+ innings:	Rachele Fico vs. No. 12 Georgia [15 IP], 04/27/12
Had 17 putouts:	Morgan Russell vs. No. 12 Georgia, 04/27/12
Had 18 putouts:	Morgan Russell vs. Syracuse, 05/20/11
Had 19 putouts:	Jennifer Schuelke vs. Oklahoma, 05/26/01
Had six assists:	Tammy Wray at No. 10 Missouri [Gm 1], 05/27/12
Had seven assists:	Juliana Santos at Kentucky [Gm. 2], 04/25/10
Had eight assists:	Tammy Wray vs. No. 22 Florida State, 04/18/12
Had two errors:	Kailey McCasland vs. Auburn [Gm 1], 03/14/12
Had three errors:	Emily Turner at Arkansas [Gm 2], 04/26/06
Had four errors:	Andrea Smith vs. Arizona, 05/26/06

INNING-BY-INNING

SCORE BY INNINGS	1	2	3	4	5	6	7	8	9	10 +	TOTALS
LSU	43	26	46	25	41	11	11	1	0	0	204
Opponents	28	12	11	11	26	22	14	2	0	6	132

THE LAST TIME LSU ...

Scored 10 or more runs:	Mississippi State [10], 03/16/12
Scored 15 or more runs:	Mississippi Valley State [16], 03/10/12
Scored 20 or more runs:	vs. Grambling State [20], 02/15/06
Allowed 10 or more runs:	at No. 10 Tennessee [10], 04/15/12
Allowed 15 or more runs:	Never
Recorded 10 or more hits:	Arkansas [11], 03/31/12
Recorded 15 or more hits:	at Southeastern Louisiana [15], 03/24/10
Recorded 20 or more hits:	vs. Alcorn State [21], 02/20/04
Allowed 10 or more hits:	at No. 10 Tennessee [13], 04/15/12
Drove home 10 or more RBIs:	Mississippi Valley State [14], 03/10/12
Hit six or more doubles:	vs. Grambling State [8], 02/15/06
Hit three or more triples:	vs. Alcorn State [3], 02/20/04
Hit four or more home runs:	vs. Fordham [4], 02/26/11
Stole eight or more bases:	at Ole Miss [8], 04/22/11
Drew 10 or more walks:	vs. Memphis [10], 02/11/07
Pitched a no-hitter:	vs. Southern, 02/18/11
Pitched 15 or more strikeouts:	at No. 10 Missouri [17], 05/27/12
Committed 4 or more errors:	at No. 10 Missouri [4], 05/27/12
Defeated a ranked team:	at No. 10 Missouri [3-1] 05/26/12
Defeated a top-five ranked team:	at No. 2 Florida [1-0] 4/24/12
Lost to an unranked opponent:	at Kentucky [1-0], 05/06/12

**2012 NCAA COLLEGE STATION REGIONAL
LSU 1, TEXAS STATE 0 - 05/18**

COLLEGE STATION, Texas – Juliana Santos delivered a clutch RBI single through the middle with one out during the seventh inning to propel the LSU softball team to a dramatic 1-0 walk-off victory over Texas State to open the NCAA College Station Regional at the Aggie Softball Complex on the Texas A&M campus.

LSU (35-22) ended a four-game May losing streak and secured its 35th victory of the season. The Tigers will face No. 8 national seed Texas A&M in Saturday's winner bracket game.

"When we have hit this season, we have hit contagiously," head coach Beth Torina said. "I think our kids will start feeling more confident knowing that they are capable of grouping those hits together. Hopefully, they will give us some momentum going into tomorrow's game."

Texas State's (38-16) Chandler Hall carried a no-hitter and retired 17 consecutive batters after issuing a leadoff walk to Simone Heyward during the first inning.

It was Heyward, making her start since April 17, who chopped an infield single down the third base line to end Hall's run and start a three-hit barrage for the Tigers. Two batters later, Ashley Langoni ripped a single of her own off of Hall's foot.

That set the stage for Santos, who knocked a 1-1 offering into centerfield off the second base bag to score Heyward standing up for the game-winner.

"The fact that Simone was able to get on-base and let everyone us in the dugout know that are capable of doing it," Torina said. "Our players know with Simone's speed that they only have to do a little bit to get her to score from second base. Both seniors at the end, Ashley Langoni and Juliana Santos, came up big for us. When we're at our best, that combination was been huge."

"Before the hit, Coach Torina told me to not try to do too much," Santos said. "Be a productive out so I went to the plate with the mentality to move Simone [Heyward] to third base. I was expecting the change-up because she got me on the same pitch in my previous at-bat. I wanted to be ready for it, and I got it through. As soon the pitcher wasn't able to field it, I knew Simone was going to score."

Rachele Fico fired a two-hitter to claim her 21st career shutout. In the process, the junior right-hander eclipsed Dani Hofer for sole possession of fourth place on LSU's all-time list. She recorded six strikeouts against two walks on an economical 93 pitches.

Hall was dealt the tough-luck loss and fell to 22-7 on the season for the Bobcats.

"A ton of credit goes to Chandler Hall," Torina said. "She is talented, a great player and everything we thought she would be. We've had offensive struggles at times on our part. Hopefully, we've broken out of it, and we will carry that momentum into tomorrow's game."

Texas State's best opportunity to score came in the seventh inning. Anna Hernandez provided an opening single and advanced into scoring position on a Hall sacrifice bunt.

Courtney Harris connected for a line drive, but Langoni ran the ball down from her left field post to keep the Bobcats off the scoreboard.

"Today wasn't my best day," Fico said. "My pitches weren't as sharp as I would like them to be, so we worked on spotting the ball better, and trying to get ahead in the count. I would have liked to have had a better performance, but my defense played phenomenally behind me. Ashley Applegate and Ashley Langoni made some great plays for me in the outfield. It is really easy to pitch on the mound when you know that your team is going to back you up."



**2012 LSU Softball
Texas State vs LSU
May 18, 2012 at College Station, TX (Aggie SB Complex)**



Texas State 0 (38-16)

LSU 1 (35-22)

Player	ab	r	h	rbi	bb	so	po	a	lob
Hernandez, Selena ss	3	0	0	0	0	0	1	2	0
Baker, Brooke lf	3	0	0	0	2	0	0	0	0
Lemons, Haley 1b	3	0	1	0	0	0	11	0	0
Hernandez, Anna 2b	3	0	1	0	0	1	2	0	1
Garcia, Brittney pr	0	0	0	0	0	0	0	0	0
Hall, Chandler p	2	0	0	0	0	0	0	2	0
Harris, Courtney dp	3	0	0	0	1	0	0	0	0
Carnline, Shelby 3b	1	0	0	0	2	0	1	2	0
Ramirez, Coralee rf	3	0	0	0	0	0	0	3	0
Masek, Jordan cf	2	0	0	0	2	1	0	1	0
Hair, Macie c	0	0	0	0	0	0	3	2	0
Totals	23	0	2	0	2	6	19	8	5

Player	ab	r	h	rbi	bb	so	po	a	lob
Simone Heyward cf	2	1	1	0	1	1	0	0	0
Jacee Blades dp	3	0	0	0	0	2	0	0	0
Ashley Langoni lf	3	0	1	0	0	0	1	0	0
Juliana Santos ss	3	0	1	1	0	0	3	0	0
Allison Falcon 2b	2	0	0	0	0	0	1	1	0
Ashley Applegate rf	2	0	0	0	0	1	2	0	0
Tammy Wray 3b	2	0	0	0	0	0	0	4	0
Morgan Russell c	2	0	0	0	0	0	7	0	0
Dylan Supak 1b	2	0	0	0	0	1	6	0	0
Heidi Pizer 1b	0	0	0	0	0	0	0	0	0
Rachele Fico p	0	0	0	0	0	0	1	1	0
Totals	21	1	3	1	1	5	21	6	2

Score by Innings	1	2	3	4	5	6	7	R	H	E
Texas State	0	0	0	0	0	0	0	0	2	0
LSU	0	0	0	0	0	0	1	1	3	1

Note: 1 out, 2 runners LOB when the game ended.

E - Wray(14), LOB - Texas State 5; LSU 2. SH - Hall(10).

Texas State	ip	h	r	er	bb	so	ab	bf	np
Hall, Chandler	6.1	3	1	1	1	5	21	22	91

LSU	ip	h	r	er	bb	so	ab	bf	np
Rachele Fico	7.0	2	0	0	2	6	23	26	93

Win - Fico (17-11). Loss - Hall (22-7). Save - None.
Inherited runners/scored: None. Pitches/strikes: Hall 91/62; Fico 93/63.

Umpires - HP: Craig Hyde 1B: Dustin Douglas 3B: Steve McCown
Start: 4:02 pm Time: 1:33 Attendance: 1265
Weather: 87 sunny; SSW 11 mph



2012 NCAA COLLEGE STATION REGIONAL
LSU 2, NO. 14 TEXAS A&M 0 - 05/19

COLLEGE STATION, Texas - Rachele Fico fired her second straight two-hit shutout in as many days, and the LSU softball team claimed a 2-0 win over No. 8 national seed Texas A&M during Saturday's winner's bracket contest of the NCAA College Station Regional at the Aggie Softball Complex.

LSU (36-22) scored both of its runs in the first inning and received a few spectacular defensive plays from A.J. Andrews and Ashley Langoni from their right and left field posts, respectively. Offensively, Allison Falcon led the way with a 2-for-3 performance and a RBI.

The Tigers will square off with No. 8 national seed Texas A&M in Sunday's regional championship game. The Aggies knocked off Texas State by a 7-4 margin during an elimination contest.

"I'm so proud of our players for executing the game plan and following up on their momentum from yesterday's win," head coach Beth Torina said. "We came out attacking, we came out aggressive. I loved the way our offense swung the bats today. A lot of our players had quality at-bats throughout, and I think the credit goes to them for being that aggressive."

A.J. Andrews, Simone Heyward and Juliana Santos set the table for LSU in the first inning. Andrews slapped a single down the left field line, while Heyward and Santos reached on a walk and hit batter to fill the bases.

Allison Falcon followed up with a timely RBI single to left field on a 0-1 pitch to plate Andrews. A throwing error by Texas A&M left fielder Emily Albus allowed Heyward to cross the plate and push the LSU advantage to 2-0.

"We definitely carried over the momentum from the seventh inning against Texas State," Falcon said. "The transition was pretty smooth. Coach Torina told us to stick within our plans, to be confident and not be afraid. We had nothing to lose really."

Fico stranded a trio of Texas A&M runners in scoring position during the first three innings. The Aggies were unable to put a runner past first base the rest of the way as the junior right-hander completed her 13th shutout of the season.

Fico worked around a career-high six walks, but also added six pivotal strikeouts to improve to 18-11 on the season. It marked only the fourth time on the season that A&M (40-17) failed to score.

With a runner on first base and two outs during the fifth inning, Texas A&M's All-America catcher Meagan May lifted a shallow fly ball to left field. Langoni sprinted in and made a fully extended, diving snag to end the frame.

Fico navigated past leadoff walks in the sixth and seventh inning with six fly ball outs highlighted by a running catch by Andrews on the right field warning track during the sixth to wrap up the 2-0 triumph.

"We had a good mix of pitches today," Fico said. "We were working all four quadrants of the strike zone. I walked too many batters, but we were able to work around it. My defense came up big making plays when we needed to. Other than that, we had better break points on the ball today. That is what made us really effective."

Texas A&M's All-America hurler Mel Dumezich was tagged with the loss and dropped to 28-12 for the season. She surrendered two runs on five hits and tallied six strikeouts versus three walks.



2012 LSU Softball
LSU at #14 Texas A&M
May 19, 2012 at College Station, TX (Aggie SB Complex)



LSU 2 (36-22)

Texas A&M 0 (40-17)

Player	ab	r	h	rbi	bb	so	po	a	lob	Player	ab	r	h	rbi	bb	so	po	a	lob
A.J. Andrews rf	4	1	1	0	0	0	2	0	0	Albus, Emily lf	3	0	0	0	1	0	1	0	0
Simone Heyward cf	3	1	1	0	1	0	1	0	0	Walker, Brittany ss	3	0	1	0	1	1	1	2	1
Ashley Langoni lf	4	0	1	0	0	0	3	0	1	May, Meagan c	2	0	0	0	1	1	6	2	1
Juliana Santos ss	2	0	0	0	0	1	2	1	0	Dumezich, Mel p	1	0	0	0	2	0	0	2	0
Allison Falcon 2b	3	0	2	1	0	0	2	0	0	Garrett, Allison pr	0	0	0	0	0	0	0	0	0
Ashley Applegate dp	2	0	0	0	0	1	0	0	0	Tysarczyk, Cassie rf	3	0	0	0	0	1	0	0	4
Tammy Wray 3b	1	0	0	0	2	1	2	1	0	Garza, Amber 3b	3	0	1	0	0	1	2	0	0
Morgan Russell c	3	0	0	0	0	1	6	0	6	Morgan, Nicole 1b	3	0	0	0	0	1	9	0	1
Dylan Supak 1b	2	0	0	0	0	1	1	0	0	Villarreal, Natalie 2b	2	0	0	0	1	0	1	3	0
Heidi Pizer 1b	1	0	0	0	0	1	2	0	0	Orsak, Kelsea cf	3	0	0	0	0	1	1	0	1
Rachele Fico p	0	0	0	0	0	0	0	0	0	Ainsley, Lauren dp	0	0	0	0	0	0	0	0	0
Totals	25	2	5	1	3	6	21	2	7	Totals	23	0	2	0	6	6	21	9	8

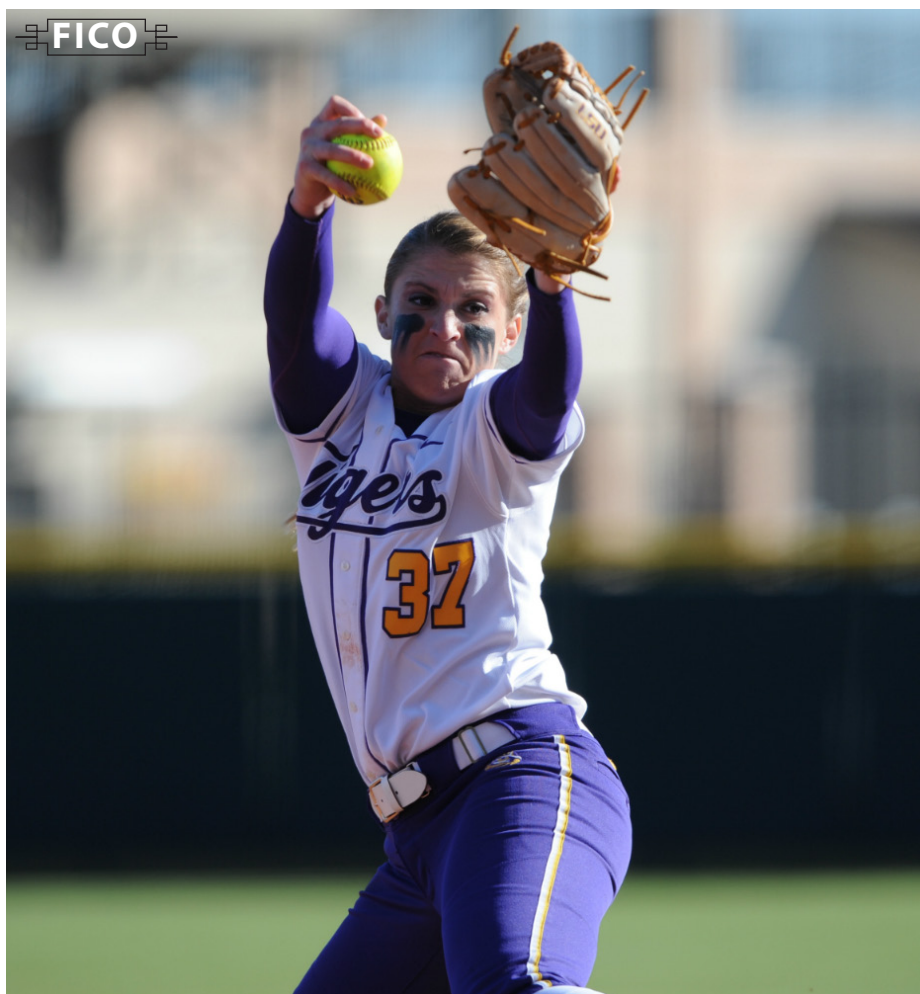
Score by Innings	1	2	3	4	5	6	7	R	H	E
LSU	2	0	0	0	0	0	0	2	5	0
Texas A&M	0	0	0	0	0	0	0	0	2	1

E - Albus(7). LOB - LSU 7; Texas A&M 8. 2B - Langoni(11); Garza(6). HBP - Santos; Applegate. SB - Heyward(7); Albus(15). CS - Applegate(1).

LSU	ip	h	r	er	bb	so	ab	bf	np	Texas A&M	ip	h	r	er	bb	so	ab	bf	np
Rachele Fico	7.0	2	0	0	6	6	23	29	137	Dumezich, Mel	7.0	5	2	3	6	25	30	116	

Win - Fico (18-11). Loss - Dumezich (28-12). Save - None.
 HBP - by Dumezich (Santos); by Dumezich (Applegate). Inherited runners/scored: None. Pitches/strikes: Fico 137/80; Dumezich 116/77.

Umpires - HP: Dustin Douglas 1B: Craig Hyde 3B: Dani Carson-Newman
 Start: 1:02 pm Time: 1:49 Attendance: 1336
 Weather: 84 sunny; SSE 11 mph



**2012 NCAA COLLEGE STATION REGIONAL
LSU 2, NO. 14 TEXAS A&M 1 - 05/20**

COLLEGE STATION, Texas - Brittany Mack put together a masterful pitching performance and the LSU softball team manufactured two runs in the fourth inning en route to a 2-1 victory over No. 8 national seed Texas A&M to claim the 2012 NCAA College Station Regional championship.

In the process, LSU (37-22) punched its first ticket to the NCAA Super Regional round since the 2007 season. The Tigers will travel to future SEC rival and No. 9 national seed Missouri.

Mack limited the potent A&M offense (41-18) to one run on three hits. In its other two NCAA College Station Regional contests, the Aggies knocked 10 home runs along with an average of nine runs and 10 hits per game.

"We couldn't be more excited about the game today and going to the super regionals," head coach Beth Torina said. "Our team played LSU softball by pitching well, playing solid defense and capitalizing on our timely runs sparked by Kailey McCasland's sacrifice fly. Texas A&M is a great team. We watched them have huge offensive numbers in the other two games. A lot of credit goes to them, and we appreciate them hosting us this weekend. It's a really excited day for our program."

Mack registered seven strikeouts versus three walks and improved to 15-11 for the season. The senior right-hander navigated her way through six scoreless innings before A&M rallied for a run during the seventh inning.

Amber Garza drew a leadoff walk and advanced to second base on pinch hitter Lindsey Sisk's ground out to third baseman Tammy Wray. She scooted over to third base on a wild pitch. Down to its final strike, Natalie Villarreal laced a RBI single through the middle to draw Texas A&M back to within 2-1.

Mack regrouped and got Kelsea Orsak to ground out five pitches later to secure the final out. The chopped two-hopper was fielded by second baseman Allison Falcon, who flipped the ball over to Heidi Pizer to send the Tigers into a regional championship dog pile right in-front of the pitcher's circle.

"I knew it was a huge deal for Brittany to avenge her loss from last season to Texas A&M," Torina said. "I was 100 percent confident and I didn't have a doubt about the type of performance I was going to get from her."

"I kept focusing on this pitch, this batter," Mack said. "I might have thrown more change-ups last year than I did this year. We definitely had a plan to throw more hard stuff to keep them off balance. We got them with a lot of drops and screws today."

Offensively, LSU pounded out six hits sparked by Ashley Applegate's 2-for-3 effort with a run scored. The Tigers scored both of their runs during a drama-filled fourth inning.

With one out, Falcon reached on a fielding error by Garza at third base. In between an ejection of assistant coach Howard Dobson, Applegate ripped a single up the middle followed by a Tammy Wray walk to load the bases.

Torina turned to her bench and pinch hitter Kailey McCasland provided the game's first run with sacrifice fly into the left centerfield gap to allow Falcon to sprint home.

"I have confidence in Kailey McCasland," Falcon said. "I knew she would step up and do her job. All I was looking for was anything deep enough that I could tag on. I know I am not the fastest, but I can score on anything that is deep enough. Kailey came through huge for us."

Dylan Supak legged out an infield single on deep ground ball in the 5-6 hole. A throwing error by A&M shortstop Brittany Walker enabled Applegate to cross the plate and push the LSU advantage to 2-0.

"Our kids scratched and clawed for these three regional wins," Torina said. "That's what we've done all season long. We know teams are going to have a hard time scoring runs against us with our pitching staff. We're going to find a way to score runs however we can."

Texas A&M's All-America pitcher Mel Dumezich was dealt the setback and completed her junior campaign with a 28-13 record. She was touched up for a pair of unearned runs on six hits and notched five Ks against a pair of free passes.



**2012 LSU Softball
#14 Texas A&M at LSU
May 20, 2012 at College Station, TX (Aggie SB Complex)**



Texas A&M 1 (41-18)

Player	ab	r	h	rbi	bb	so	po	a	lob
Albus, Emily lf	3	0	1	0	0	0	1	0	1
Walker, Brittany ss	2	0	0	0	0	0	0	3	0
May, Meagan c	2	0	0	0	1	5	0	0	0
Garrett, Allison pr	0	0	0	0	0	0	0	0	0
Dumezich, Mel p	3	0	0	0	0	2	0	1	1
Garza, Amber 3b	2	1	0	0	1	1	1	0	0
Morgan, Nicole 1b	2	0	0	0	1	1	1	1	1
Tysarczyk, Cassie rf	2	0	0	0	2	1	0	0	0
Sisk, Lindsey ph	1	0	0	0	0	0	0	0	0
Villarreal, Natalie 2b	3	0	1	0	0	2	1	1	1
Orsak, Kelsea cf	3	0	1	0	0	1	0	1	0
Ainsley, Lauren dp	0	0	0	0	0	0	0	0	0
Totals	23	1	3	1	3	7	18	7	5

LSU 2 (37-22)

Player	ab	r	h	rbi	bb	so	po	a	lob
A.J. Andrews rf	3	0	0	0	0	2	0	0	2
Simone Heyward cf	3	0	0	0	0	1	0	0	0
Ashley Langoni lf	3	0	0	0	0	0	0	0	1
Juliana Santos ss	3	0	1	0	0	1	0	0	0
Allison Falcon 2b	3	1	1	0	0	0	2	2	1
Ashley Applegate dp	3	1	2	0	0	0	0	0	0
Tammy Wray 3b	2	0	0	0	1	1	0	6	0
Lauren Houston c	2	0	1	0	0	0	8	0	2
Kailey McCasland pr	0	0	0	1	0	0	0	0	0
Dylan Supak 1b	1	0	1	0	1	0	6	0	0
Alex Boulet pr	0	0	0	0	0	0	0	0	0
Heidi Pizer pr/1b	1	0	0	0	0	0	5	0	1
Brittany Mack p	0	0	0	0	0	0	0	3	0
Totals	24	2	6	1	2	5	21	11	7

Score by Innings	1	2	3	4	5	6	7	R	H	E
Texas A&M	0	0	0	0	0	0	1	1	3	2
LSU	0	0	0	2	0	0	X	2	6	0

E - Walker(7); Garza(8). LOB - Texas A&M 5; LSU 7. SH - Walker(10). SF - McCasland(1). SB - Boulet(12).

Texas A&M	ip	h	r	er	bb	so	ab	bf	np	LSU	ip	h	r	er	bb	so	ab	bf	np
Dumezich, Mel	6.0	6	2	0	2	5	24	27	115	Brittany Mack	7.0	3	1	1	3	7	23	27	115

Win - Mack (15-11). Loss - Dumezich (28-13). Save - None.
WP - Mack 2(8). Inherited runners/scored: None. Pitches/strikes: Dumezich 115/75; Mack 115/66.

Umpires - HP: Steve McCown 1B: Dustin Douglas 3B: Dani Carson-Newman
Start: 1:02 pm Time: 1:52 Attendance: 1294
Weather: 84 sunny; SSE 8 mph



2012 NCAA COLUMBIA SUPER REGIONAL
LSU 6, NO. 10 MISSOURI 1 • 05/26

COLUMBIA, Mo. — Allison Falcon delivered a 2-for-3 performance and matched a career-high three RBIs as the LSU softball team knocked off No. 9 national seed Missouri by a 6-1 margin during the opening game of the NCAA Columbia Super Regional in front of 2,253 fans at University Field.

LSU (38-22) won its fourth consecutive NCAA Tournament game and moved within one victory of making the program's third appearance at the Women's College World Series. It also marked LSU's first NCAA Super Regional victory since the 2006 season.

LSU's offense racked up six runs and nine hits, the most runs for the Tigers since a 6-1 victory over Nicholls State back on April 4.

A.J. Andrews also matched a career-high with two hits from the leadoff spot, while Morgan Russell matched a season-high with two RBIs.

Rachele Fico went the distance for LSU in the circle and improved to 19-11 on the season. The junior right-hander sprayed eight hits and surrendered only one run to the high-octane Missouri offense. She recorded five strikeouts versus two walks to garner her third postseason win for the season.

"I feel like our team was very prepared tonight," head coach Beth Torina said. "We worked really hard this week, a lot of things with our offense. I feel really good about the preparation we did, and I feel really good about the offense. It showed up today. I liked how aggressive our team was. I like our defensive performance and our performance on the mound. I was really happy with how we played today."

LSU grabbed a 2-0 advantage during the third inning. Dylan Supak coaxed a leadoff walk, and pinch runner Jacee Blades advanced to second base on Andrews single up-the-middle. Two batters later, Ashley Langoni drew another free pass to fill the bases. Falcon ripped a timely two-run, two-out single to put LSU on the scoreboard.

Missouri (46-13) cut the LSU advantage down to 2-1 in the fourth inning. Nicole Hudson smacked a leadoff double into the left center-field gap. She crossed the plate on Kayla Kingsley two-out, RBI infield single in front of Fico in the pitcher's circle.

LSU responded with three runs during the fifth inning to bust the contest open. Simone Heyward along with Langoni and Juliana Santos set the table with a walk and two singles, respectively, to load the bases.

Falcon and Russell were hit-by-pitch sandwiched between an Ashley Applegate walk to push the LSU advantage to 5-1 and chase Missouri's All-American hurler Chelsea Thomas from the game. Thomas dropped to 26-8 for the season and was touched up for five runs on five hits. She issued a season's best six walks to go along with seven Ks.

"Thomas is a talented pitcher," Falcon said. "I think what really helped us was we stayed within our plan, really executed well and kind of threw her off a little bit."

Missouri put the first two batters on-base in the sixth inning, but LSU escaped the jam as third baseman Tammy Wray turned a 5-3 double play to keep the score at 5-1.

LSU added an insurance run during the seventh inning. Pinch hitter Cassie Trosclair cranked a leadoff triple and scored on Russell's RBI double off the left field wall to make it 6-1.

Fico worked around a bases loaded situation in the seventh inning and received a fielder's choice play from her middle infield to secure the 6-1 victory.

"We kept a good mix of things," Fico said. "I still expect more from myself. I would have liked to be a little bit sharper, but the great thing about this sport is I have a team behind me. They played great defense, and they got it done for me."



2012 LSU Softball
LSU at #10 Missouri
May 26, 2012 at Columbia, Mo. (University Field)



LSU 6 (38-22)

Player	ab	r	h	rbi	bb	so	po	a	lob
A.J. Andrews rf	5	1	2	0	0	3	0	0	3
Simone Heyward cf	2	1	0	0	2	0	0	0	0
Kailey McCasland ph	1	0	0	0	0	0	0	0	0
Ashley Langoni lf	4	1	1	0	1	2	2	0	2
Juliana Santos ss	4	1	2	0	0	1	2	2	0
Allison Falcon 2b	3	0	2	3	0	1	2	2	2
Ashley Applegate dp	2	0	0	1	2	0	0	0	2
Tammy Wray 3b	3	0	0	0	2	2	2	4	3
Cassie Trosclair ph	1	1	1	0	0	0	0	0	0
Morgan Russell c	3	0	1	2	0	1	5	0	0
Rikki Alcaraz pr	0	0	0	0	0	0	0	0	0
Dylan Supak 1b	2	0	0	1	0	5	0	0	0
Jacee Blades pr	0	1	0	0	0	0	0	0	0
Heidi Pizer 1b	0	0	0	0	1	0	3	0	0
Rachele Fico p	0	0	0	0	0	0	0	2	0
Totals	30	6	9	6	7	10	21	10	12

Missouri 1 (46-13)

Player	ab	r	h	rbi	bb	so	po	a	lob
Sykes, Mackenzie cf	4	0	2	0	0	0	0	0	0
Marston, Jenna c	4	0	1	0	0	1	11	0	0
Fleming, Ashley rf	3	0	1	0	0	0	1	0	2
Hudson, Nicole 3b	3	1	1	0	1	0	4	2	2
Roth, Kelsea 1b	2	0	0	0	1	0	4	0	0
Randazzo, Angela ph	1	0	0	0	0	0	0	0	3
Muller, Lindsey dp	2	0	1	0	0	0	0	0	0
Kingsley, Kayla lf	3	0	1	1	0	1	1	0	1
Genovese, Corrin ss	3	0	0	0	0	1	0	0	2
Stephens, Ashtin 2b	3	0	1	0	0	2	0	1	0
Thomas, Chelsea p	0	0	0	0	0	0	0	1	0
Nottelmann, Kristin p	0	0	0	0	0	0	0	1	0
Totals	28	1	8	1	2	5	21	5	10

Score by Innings	1	2	3	4	5	6	7	R	H	E
LSU	0	0	2	0	3	0	1	6	9	0
Missouri	0	0	0	1	0	0	0	1	8	1

E - Roth(3); DP - LSU 1; LOB - LSU 12; Missouri 10; 2B - Russell(3); Hudson(10); 3B - Trosclair(1); HBP - Falcon; Russell; Fleming; Muller; SB - Andrews(14); Heyward(8); Kingsley(10).

LSU	ip	h	r	er	bb	so	ab	bf	np	Missouri	ip	h	r	er	bb	so	ab	bf	np
Rachele Fico	7.0	8	1	1	2	5	28	32	119	Thomas, Chelsea	4.1	5	5	5	6	7	18	26	103
										Nottelmann, Kristin	2.2	4	1	1	1	3	12	13	54

Win - Fico (19-11). Loss - Thomas (26-8). Save - None.
 WP - Thomas(16). HBP - by Fico (Muller); by Thomas (Falcon); by Thomas (Russell); by Fico (Fleming). Inherited runners/scored: Nottelmann 3/0. Pitches/strikes: Fico 119/75; Thomas 103/56; Nottelmann 54/36.

Umpires - HP: Smokey Edds 1B: John Baca 3B: Craig Hyde
 Start: 6:34 pm Time: 2:34 Attendance: 2253
 Weather: 91 sunny; SSW 11 mph



**2012 NCAA COLUMBIA SUPER REGIONAL
NO. 10 MISSOURI 5, LSU 1 • 05/27**

COLUMBIA, Mo. - Brittany Mack racked up a career-best 17 strikeouts, but LSU's defense committed four errors which led to five Missouri unearned runs to force a rubber third game at the NCAA Columbia Super Regional.

With the score knotted at 1-1 during the 12th inning, Missouri took advantage of a passed ball off a Mack strikeout to start the inning. An Ashley Fleming single coupled with an international walk to Nicole Hudson loaded the bases.

Mack induced a ground ball off of Kelsea Roth's bat, but third baseman Tammy Wray committed a throwing error which allowed all three base runners to cross the plate. Missouri tacked on another run as Kayla Kingsley added a RBI on a fielder's choice for the final margin of 5-1.

Mack's 17 Ks was tied for third-most in a single game in program history, but she dropped to 15-12 with the hard-luck loss.

Missouri rode Chelsea Thomas' right-arm to eight strikeouts over her 11 innings of work. She picked up her 27th victory of the season.

"I thought Brittany would be really difficult for them to hit, and I knew it was going to be hard to prepare for both pitchers," Torina said. "I really thought Brittany was going to be successful today. She sure kept us in it long enough, but Chelsea was just so strong in that first game. She was really tough to deal with. I do not think it was Brittany as much as it was Chelsea against our offense."

The two teams traded unearned runs during the third inning. Missouri picked up a RBI on a fielder's choice as Ashtin Stephens executed a textbook slide around catcher Lauren Houston's tag attempt at the plate. Stephens got aboard on a leadoff walk and used alert baserunning to advance to third base on Mackenzie Sykes sacrifice bunt.

LSU countered with a Dylan Supak leadoff walk. Pinch runner Jacee Blades scooted over to second base on A.J. Andrews' sacrifice bunt. A passed ball enabled Blades to move to third base. She scored the equalizer on Ashley Langoni's sacrifice fly.



**2012 LSU Softball
#10 Missouri at LSU
May 27, 2012 at Columbia, Mo. (University Field)**



Missouri 5 (47-13)

Player	ab	r	h	rbi	bb	so	po	a	lob
Sykes, Mackenzie cf	5	0	0	0	0	3	2	0	2
Marston, Jenna c	5	1	1	1	1	2	11	0	0
Fleming, Ashley rf	5	1	1	0	1	2	0	0	0
Hudson, Nicole 3b	4	1	2	0	2	0	3	3	3
Roth, Kelsea 1b	1	0	0	0	0	1	6	0	2
Corwin, Brianna pr	0	0	0	0	0	0	0	0	0
Hay, Rachel ph	1	0	0	0	1	0	0	0	0
Randazzo, Angela ph/dp	2	1	0	0	0	1	0	0	1
Muller, Lindsey dp/1b	6	0	0	0	0	4	2	0	0
Kingsley, Kayla lf	6	0	2	1	0	1	2	1	0
Genovese, Corrin ss	6	0	1	0	0	0	2	2	2
Stephens, Ashtin 2b	3	1	0	0	1	1	6	3	2
Krebs, Princess ph	1	0	0	0	0	1	0	0	0
Thomas, Chelsea p	0	0	0	0	0	0	2	3	0
Erwin, Bailey p	0	0	0	0	0	0	0	0	0
Totals	45	5	7	2	5	17	36	12	12

LSU 1 (38-23)

Player	ab	r	h	rbi	bb	so	po	a	lob
A.J. Andrews rf	4	0	0	0	0	2	0	0	3
Simone Heyward cf	4	0	1	0	1	1	1	1	0
Ashley Langoni lf	3	0	0	1	0	0	0	0	0
Juliana Santos ss	5	0	0	0	0	1	5	2	0
Allison Falcon 2b	4	0	0	0	1	1	2	2	1
Ashley Applegate dp	5	0	2	0	0	0	0	0	0
Alex Boulet pr	0	0	0	0	0	0	0	0	0
Tammy Wray 3b	4	0	0	0	0	1	0	6	0
Cassie Troclair ph	1	0	1	0	0	0	0	0	0
Lauren Houston c	3	0	1	0	1	1	16	4	2
Kailey McCasland ph	1	0	0	0	0	0	0	0	0
Dylan Supak 1b	1	0	0	0	1	1	2	0	0
Jacee Blades pr	0	1	0	0	0	0	0	0	0
Heidi Pizer 1b	1	0	0	0	0	1	10	0	0
Brittany Mack p	0	0	0	0	0	0	0	1	0
Totals	36	1	5	1	4	9	36	15	7

Score by Innings	1	2	3	4	5	6	7	8	9	10	11	12	R	H	E
Missouri	0	0	1	0	0	0	0	0	0	0	0	4	5	7	0
LSU	0	0	1	0	0	0	0	0	0	0	0	0	1	5	4

E - Andrews(2); Wray(15); Pizer(1); Mack(5). LOB - Missouri 12; LSU 7. 2B - Hudson(11). HBP - Roth 2. SH - Sykes(2); Andrews(4); Langoni(1); Pizer(1). SF - Langoni(5). SB - Marston(11); Kingsley 2(12); Heyward(9). CS - Kingsley(1); Genovese(2).

Missouri	ip	h	r	er	bb	so	ab	bf	np	LSU	ip	h	r	er	bb	so	ab	bf	np
Thomas, Chelsea	11.0	5	1	0	4	8	33	41	167	Brittany Mack	12.0	7	5	0	5	17	45	53	204
Erwin, Bailey	1.0	0	0	0	0	1	3	3	9										

Win - Thomas (27-8). Loss - Mack (15-12). Save - None.
HBP - by Mack (Roth); by Mack (Roth). PB - Marston(3); Houston(8). Inherited runners/scored: None. Pitches/strikes: Thomas 167/111; Erwin 9/7; Mack 204/123.

Umpires - HP: John Baca 1B: Craig Hyde 3B: Smokey Edds
Start: 2:34 pm Time: 3:42 Attendance: 1627
Weather: 91 sunny; SSE 20 mph



2012 NCAA COLUMBIA SUPER REGIONAL
LSU 3, NO. 10 MISSOURI 1 • 05/27

COLUMBIA, Mo. — Simone Heyward picked the most opportune time to notch her first extra-base hit of the season and cranked a three-run, third-inning double to vault the LSU softball team to a 3-1 victory over No. 9 national seed Missouri at University Field to punch the program's third ticket to the Women's College World Series.

"First, we have to congratulate Missouri on the season they had, and what a tough battle that was today," head coach Beth Torina said. "They fought so hard, a big congrats to them on the season that they had. I am so proud of our team. I thought it was a total team effort today. We had some timely hits, with Simone, we had some great pitching and some phenomenal defensive plays today. We are just really excited to be included in this final eight."

"These kids just have such a way of shaking things off and moving on," Torina continued. "That is really them. They are just really special. I think it just has to do with the eight seniors, their leadership and just being experienced in this game. They understand that you are just one pitch away from greatness."

In the top half of the third inning, Heyward turned a critical double play to keep LSU's deficit at 1-0. With the bases loaded and one out, Heyward made a running catch going towards left centerfield. She fired a one-hop bullet to catcher Morgan Russell to gun down Missouri's Corrin Genovese at the plate.

LSU turned that play into instant momentum in the home half of the frame. Tammy Wray sparked the three-run rally with a leadoff walk, while Russell followed by getting hit-by-pitch. Dylan Supak executed a sacrifice bunt to advance pinch runner Jacee Blades and Russell into scoring position. A.J. Andrews battled her way to seven-pitch free pass to fill the bases.

On a 2-1 offering, Heyward cleared the bases with a double into the left centerfield gap. She was called out on a bang-bang play attempting to get to third base. It not only was Heyward's first extra-base hit of the season but it doubled her season RBI total.

"I don't know where the ball was, somewhere outside," Heyward said. "I think I closed my eyes when I swung, I think I did, I am not going to lie. When I opened my eyes, I saw the ball going to the fence, and I just ran."

That would be more than enough run support for Rachele Fico, who won her fourth straight NCAA postseason decision. The junior right-hander surrendered one run on two hits and recorded four strikeouts versus zero walks en route to her 20th victory of the season.

Missouri's Chelsea Thomas was dealt the loss and concluded her junior campaign at 27-9. All three runs she allowed were earned. She issued three walks in her three innings of work.

"We were just trying to keep them off-balanced," Fico said. "We were trying to limit free passes. I think we definitely got stronger as the game went on. We had a little bit of a rough start, and they were definitely barreling up on the ball. They were putting some solid balls into play. As the game went on, we definitely got stronger and gained momentum."

Missouri (47-14) made the most of a pair of infield singles from Kayla Kingsley and Genovese to open the third inning. They moved up to scoring position on Ashtin Stephens sacrifice bunt, and Mackenzie Sykes platted Kingsley on a RBI bunt of her own down the first base line for the contest's first run.

Missouri continued to charge as Jenna Marston was hit-by-pitch to load the bases. However, the threat ended with Fleming's double play ball.

Fico retired 12 of the final 14 Missouri hitters she faced with the exception of a hit batter during the sixth inning and a two-base error in the seventh inning. Ashley Langoni made up for that error by catching a Genovese fly ball on the very next play for the game's final out.

"I think I just settled down," Fico said. "Coach Torina does an awesome job with me. She knows how I work, and how I operate. She always knows the right things to say. Whenever I run into trouble, it is because I get too uptight, and I am trying to do too much. She calmed me down, told me to trust my pitches, make them spin and make them move."



2012 LSU Softball
#10 Missouri at LSU
May 27, 2012 at Columbia, Mo. (University Field)



Missouri 1 (47-14)

Player	ab	r	h	rbi	bb	so	po	a	lob
Sykes, Mackenzie cf	3	0	0	1	0	1	1	1	0
Marston, Jenna c	1	0	0	0	0	0	3	0	0
Fleming, Ashley rf	3	0	0	0	0	1	1	0	2
Hudson, Nicole 3b	3	0	0	0	0	0	1	2	1
Roth, Kelsea 1b	3	0	0	0	2	7	2	0	0
Muller, Lindsey dp	2	0	0	0	0	0	0	0	0
Jones, Kelsi ph	1	0	0	0	0	0	0	0	0
Kingsley, Kayla lf	3	1	1	0	0	0	0	0	0
Genovese, Corrin ss	3	0	1	0	0	3	4	1	0
Stephens, Ashtin 2b	1	0	0	0	0	2	1	0	0
Thomas, Chelsea p	0	0	0	0	0	0	2	0	0
Erwin, Bailey p	0	0	0	0	0	0	0	0	0
Totals	23	1	2	1	0	4	18	12	4

LSU 3 (39-23)

Player	ab	r	h	rbi	bb	so	po	a	lob
A.J. Andrews rf	2	1	0	0	1	0	2	0	0
Simone Heyward cf	2	0	1	3	1	0	1	1	0
Ashley Langoni lf	3	0	1	0	0	0	2	0	0
Juliana Santos ss	3	0	0	0	0	0	2	0	1
Allison Falcon 2b	2	0	0	0	0	0	1	0	0
Ashley Applegate dp	2	0	0	0	1	0	0	0	0
Tammy Wray 3b	1	0	0	0	1	0	1	3	0
Jacee Blades pr	0	1	0	0	0	0	0	0	0
Morgan Russell c	1	1	0	0	0	0	5	0	0
Dylan Supak 1b	1	0	0	0	0	0	6	0	0
Heidi Pizer 1b	0	0	0	0	0	0	1	0	0
Rachele Fico p	0	0	0	0	0	0	2	0	0
Totals	17	3	2	3	3	1	21	6	1

Score by Innings	1	2	3	4	5	6	7	R	H	E
Missouri	0	0	1	0	0	0	0	1	2	0
LSU	0	0	3	0	0	0	X	3	2	1

E - Langoni(3); DP - LSU 1. LOB - Missouri 4; LSU 1. 2B - Heyward(1). HBP - Marston 2; Russell. SH - Stephens(5); Supak(4).

Missouri	ip	h	r	er	bb	so	ab	bf	np	LSU	ip	h	r	er	bb	so	ab	bf	np
Thomas, Chelsea	3.0	2	3	3	3	1	8	13	45	Rachele Fico	7.0	2	1	1	0	4	23	26	94
Erwin, Bailey	3.0	0	0	0	0	0	9	9	30										

Win - Fico (20-11). Loss - Thomas (27-9). Save - None.
 HBP - by Fico (Marston); by Thomas (Russell); by Fico (Marston). Inherited runners/scored: None. Pitches/strikes: Thomas 45/25; Erwin 30/24; Fico 94/59.

Umpires - HP: Craig Hyde 1B: Smokey Edds 3B: John Baca
 Start: 6:48 pm Time: 1:38 Attendance: 1424
 Weather: 91 sunny; S 10 mph

NCAA COLUMBIA SUPER REGIONAL CHAMPS





2012 LSU Softball
Overall Statistics for LSU (as of May 27, 2012)
(All games Sorted by Batting avg)



Record: 39-23 Home: 24-7 Away: 11-12 Neutral: 4-4 SEC: 15-13

Player	avg	gp-gs	ab	r	h	2b	3b	hr	rbi	tb	slg%	bb	hp	so	gdp	ob%	sf	sh	sb-att	po	a	e	fld%
0 Ashley Langoni	.265	62-62	162	33	43	11	1	6	30	74	.457	43	2	34	1	.415	5	1	6-7	70	4	3	.961
32 Allison Falcon	.252	50-50	135	17	34	3	1	3	22	48	.356	6	8	12	1	.322	0	5	5-6	69	56	6	.954
2 Juliana Santos	.250	55-55	156	18	39	7	0	1	22	49	.314	18	3	25	3	.333	3	0	5-6	81	78	2	.988
6 A.J. Andrews	.228	51-46	136	19	31	0	3	0	8	37	.272	19	1	29	0	.327	0	4	14-17	33	0	2	.943
10 Ashley Applegate	.202	60-60	163	18	33	5	2	0	6	42	.258	21	3	21	1	.305	0	3	4-5	55	1	2	.966

28 Tammy Vermeulen	.500	14-1	4	4	2	0	0	0	3	2	.500	2	0	0	0	.667	0	0	2-2	0	0	0	.000
3 Cassie Trosclair	.244	26-14	45	3	11	1	1	0	7	14	.311	1	1	13	0	.271	1	2	3-5	5	1	2	.750
1 Rikki Alcaraz	.233	25-16	43	13	10	3	0	0	4	13	.302	10	1	13	0	.389	0	0	2-3	33	16	2	.961
16 Lauren Houston	.226	29-28	53	10	12	0	0	0	5	12	.226	6	13	6	2	.425	1	2	0-0	220	19	5	.980
23 Jacee Blades	.224	42-27	85	12	19	1	0	0	2	20	.235	6	2	19	0	.290	0	5	5-8	7	0	1	.875
47 Ashleigh Kuhn	.220	27-21	59	3	13	2	0	0	13	15	.254	5	0	10	3	.277	1	1	0-1	116	2	3	.975
33 Kailey McCasland	.214	32-19	56	7	12	1	0	1	9	16	.286	5	2	13	2	.297	1	1	1-1	11	15	4	.867
25 Simone Heyward	.214	37-21	56	12	12	1	0	0	6	13	.232	15	3	14	0	.395	2	1	9-9	21	2	1	.958
11 Dylan Supak	.209	45-41	91	10	19	3	0	1	11	25	.275	14	4	19	1	.339	0	4	1-1	151	7	4	.975
4 Morgan Russell	.176	35-34	74	4	13	3	0	1	9	19	.257	5	10	10	1	.315	0	4	0-0	246	18	0	1.000
12 Heidi Pizer	.167	33-10	30	6	5	0	0	0	4	5	.167	6	0	12	0	.306	0	1	2-2	92	3	1	.990
18 Tammy Wray	.156	56-51	122	6	19	2	0	0	9	21	.172	22	4	31	1	.304	0	4	1-1	48	114	15	.915
44 Brittany Mack	.111	7-5	9	0	1	1	0	0	1	2	.222	0	0	3	0	.111	0	0	0-0	9	45	5	.915
9 Alex Boulet	.000	33-1	7	9	0	0	0	0	0	0	.000	0	0	2	0	.000	0	0	12-15	1	0	0	1.000
Totals	.221	62	1486	204	328	44	8	13	171	427	.287	204	57	286	16	.334	14	38	72-89	1280	423	61	.965
Opponents	.198	62	1579	132	313	37	5	20	107	420	.266	149	52	446	6	.289	1	31	59-79	1237	503	52	.971

LOB - Team (359), Opp (400). DPs turned - Team (11), Opp (24). CI - Team (0), Opp (1). IBB - Team (5), Langoni 5, Opp (1).

(All games Sorted by Earned run avg)

Player	era	w-l	app	gs	cg	sho	sv	ip	h	r	er	bb	so	2b	3b	hr	b/avg	wp	hp	bk	sfa	sha
37 Rachele Fico	0.92	20-11	35	31	26	13/1	1	220.1	140	46	29	77	213	19	4	8	.177	8	22	0	1	14
44 Brittany Mack	2.21	15-12	30	27	20	4/2	1	168.0	149	76	53	56	193	14	1	9	.228	8	28	1	0	15

20 Meghan Patterson	1.83	4-0	9	4	4	2/3	0	38.1	24	10	10	16	40	4	0	3	.179	5	2	0	0	2
Totals	1.51	39-23	62	62	50	22/3	2	426.2	313	132	92	149	446	37	5	20	.198	21	52	1	1	31
Opponents	2.82	23-39	62	62	34	11/1	2	412.1	328	204	166	204	286	44	8	13	.221	18	57	7	14	38

PB - Team (13), Houston 8, Russell 5, Opp (6). Pickoffs - Team (1), Russell 1. SBA/ATT - Russell (32-43), Mack (34-42), Houston (27-36), Fico (23-33), Patterson (2-4).

STARTERS BY POSITION RECORD

P	STARTS	RECORD	2B	STARTS	RECORD	CF	STARTS	RECORD	Allison Falcon	3	3-0
Rachele Fico	31	20-11	Allison Falcon	43	23-20	A.J. Andrews	37	19-18	Dylan Supak	3	2-1
Brittany Mack	27	15-12	Rikki Alcaraz	15	13-2	Simone Heyward	21	16-5	Juliana Santos	2	2-0
Meghan Patterson	4	4-0	Cassie Trosclair	4	3-1	Jacee Blades	3	3-0	Rikki Alcaraz	1	0-1
C			SS			RF			A.J. Andrews	1	1-0
Morgan Russell	34	17-17	Juliana Santos	53	30-23	Ashley Applegate	51	32-19	Ashleigh Kuhn	1	1-0
Lauren Houston	28	22-6	Dylan Supak	5	5-0	A.J. Andrews	8	7-1	Brittany Mack	1	1-0
1B			3B			DP			Heidi Pizer	1	1-0
Dylan Supak	33	20-13	Tammy Wray	51	31-20	Jacee Blades	21	15-6	Tammy Vermeulen	1	1-0
Ashleigh Kuhn	20	12-8	Kailey McCasland	11	8-3	Cassie Trosclair	10	4-6	• 2012 game-by-game lineups by fielding position is listed on page 23.		
Heidi Pizer	9	7-2	LF			Ashley Applegate	9	5-4			
						Kailey McCasland	8	3-5			

NO.	PLAYER [HR NUMBER]	OPPONENT [DATE]	PITCHER	ON-BASE	INNING	OUTS	COUNT	SCORE	FINAL
1	Ashley Langoni [1]	Penn State [Feb. 10]	Akamine [RHP]	0	5	1	1-1	1-5	L, 5-3
2	Ashley Langoni [2]	vs. Utah State [Feb. 19]	Harmon [RHP]	1	4	0	2-2	11-0	W, 13-0
3	Morgan Russell [1]	McNeese State [Feb. 25]	Bond [RHP]	0	6	2	2-2	1-0	W, 2-0
4	Kailey McCasland [1]	vs. No. 23 Oklahoma State [March 3]	Espinosa [RHP]	0	5	1	2-1	6-2	W, 7-4
5	Ashley Langoni [3]	at Nicholls State [March 7]	Andrus [RHP]	1	1	2	0-1	0-0	W, 10-2
6	Dylan Supak [1]	at Nicholls State [March 7]	Andrus [RHP]	0	1	2	1-1	2-0	W, 10-2
7	Allison Falcon [1]	Troy [March 9]	Affeldt [RHP]	1	5	1	1-0	2-1	W, 6-3
8	Ashley Langoni [4]	at South Carolina [March 24]	Broyles [RHP]	1	3	1	2-1	1-0	W, 5-0
9	Ashley Langoni [5]	at South Carolina [March 25]	Howser [RHP]	0	1	2	0-0	0-0	W, 9-0
10	Juliana Santos [1]	at South Carolina [March 25]	Howser [RHP]	1	4	2	0-2	5-0	W, 9-0
11	Ashley Langoni [6]	at No. 2 Alabama [April 7]	Jury [RHP]	1	1	1	3-1	0-0	W, 3-2
12	Allison Falcon [2]	at No. 10 Tennessee [April 15]	E. Renfroe [RHP]	0	2	0	2-0	0-0	L, 10-2
13	Allison Falcon [3]	at Kentucky [May 4]	Bell [RHP]	0	3	0	1-2	0-0	L, 4-3

Bold represents game tying or go-ahead home run

HOME RUN BREAKDOWN

SITE	COUNT	CLASS	GAME TYPE
Home	3	Freshmen	2
Away	8	Sophomore	3
Neutral	2	Junior	0
		Senior	8
HR TYPE		INNING	
Solo	7	1st Inning	4
Two-Run	6	2nd Inning	1
Three-Run	0	3rd Inning	2
Grand Slam	0	4th Inning	2
		5th Inning	3
NUMBER OF OUTS		6th Inning	1
0 Outs	3	7th Inning	0
1 Out	5	Extra Innings	0
2 Outs	5		
		GAME RESULT	
		Wins	10
		Losses	3
		MISC	
		Leadoff	2
		Inside the Park	0

DATE	OPPONENT	RESULT	INN	LSU R-H-E	OPP. R-H-E	RECORD [SEC]	PITCHER OF RECORD	ATT	TIME
Feb. 10	Penn State [1]	L, 5-3	7	3-5-1	5-4-1	0-1 [0-0]	Mack [0-1]	1,073	2:44
Feb. 11	No. 15 Michigan [1]	L, 2-1	7	1-3-0	2-11-0	0-2 [0-0]	Mack [0-2]	1,298	1:52
Feb. 11	Penn State [1]	W, 1-0	[8]	1-3-1	0-2-1	1-2 [0-0]	Fico [1-0]	1,298	2:53
Feb. 12	Louisiana Tech [1]	W, 8-0	[5]	8-8-0	0-1-1	2-2 [0-0]	Fico [2-0]	1,046	1:28
Feb. 18	vs. DePaul [2]	L, 3-1	7	1-2-1	3-9-1	2-3 [0-0]	Fico [2-1]	387	2:14
Feb. 18	vs. Cal State Northridge [2]	W, 11-0	[5]	11-8-0	0-1-2	3-3 [0-0]	Mack [1-2]	387	1:34
Feb. 19	vs. No. 3 California [2]	L, 14-3	[5]	3-6-0	14-12-0	3-4 [0-0]	Mack [1-3]	414	1:54
Feb. 19	vs. Utah State [2]	W, 13-0	[5]	13-12-0	0-1-1	4-4 [0-0]	Fico [3-1]	414	1:48
Feb. 21	Southeastern Louisiana	W, 7-0	7	7-9-1	0-3-4	5-4 [0-0]	Mack [2-3]	893	2:02
Feb. 25	South Alabama [3]	W, 5-4	7	5-8-2	4-8-0	6-4 [0-0]	Mack [3-3]	1,268	2:00
Feb. 25	McNeese State [3]	W, 2-0	7	2-6-0	0-1-1	7-4 [0-0]	Fico [4-1]	1,268	1:45
Feb. 26	South Alabama [3]	W, 1-0	7	1-3-2	0-7-1	8-4 [0-0]	Fico [5-1]	1,065	1:58
Feb. 26	Alcorn State [3]	W, 2-0	7	2-3-1	0-1-0	9-4 [0-0]	Patterson [1-0]	1,065	1:26
March 2	at No. 8 Oklahoma [4]	L, 7-0	7	0-1-2	7-7-2	9-5 [0-0]	Mack [3-4]	647	2:04
March 3	vs. No. 23 Oklahoma State [4]	W, 7-4	7	7-9-3	4-9-3	10-5 [0-0]	Mack [4-4]	1,137	2:33
March 3	vs. No. 8 Oklahoma [4]	L, 5-0	7	0-3-2	5-6-0	10-6 [0-0]	Fico [5-2]	1,137	2:02
March 4	at No. 23 Oklahoma State [4]	L, 1-0	[10]	0-6-4	1-12-1	10-7 [0-0]	Fico [5-3]	322	2:45
March 7	at Nicholls State	W, 10-2	[5]	10-9-0	2-4-2	11-7 [0-0]	Fico [6-3]	465	1:38
March 9	Mississippi Valley State [5]	W, 2-0	7	2-2-0	0-3-1	12-7 [0-0]	Patterson [2-0]	992	1:45
March 9	Troy [5]	W, 6-3	7	6-9-5	3-9-2	13-7 [0-0]	Mack [5-4]	992	2:30
March 10	Troy [5]	W, 1-0	7	1-6-0	0-1-0	14-7 [0-0]	Fico [7-3]	1,019	1:37
March 10	Mississippi Valley State [5]	W, 16-0	[5]	16-13-1	0-2-2	15-7 [0-0]	Mack [6-4]	1,019	1:44
March 14	No. 20 Auburn [SEC]	W, 4-1	7	4-9-3	1-4-0	16-7 [1-0]	Mack [7-4]	1,226	1:59
March 14	No. 20 Auburn [SEC]	L, 2-0	7	0-1-1	2-6-1	16-8 [1-1]	Fico [7-4]	1,226	2:05
March 16	Mississippi State [SEC]	W, 10-7	7	10-8-3	7-8-2	17-8 [2-1]	Fico [8-4]	1,022	2:41
March 17	Mississippi State [SEC]	W, 3-1	7	3-5-2	1-8-0	18-8 [3-1]	Mack [8-4]	1,397	2:01
March 18	Mississippi State [SEC]	W, 4-0	7	4-3-2	0-3-2	19-8 [4-1]	Fico [9-4]	1,098	2:19
March 20	Georgia Tech	W, 2-1	7	2-4-2	1-5-2	20-8 [4-1]	Mack [9-4]	1,169	2:34
March 23	at South Carolina [SEC]	W, 5-0	7	5-8-0	0-4-0	21-8 [5-1]	Fico [10-4]	283	1:59
March 24	at South Carolina [SEC]	W, 5-0	7	5-6-2	0-1-1	22-8 [6-1]	Mack [10-4]	463	2:19
March 25	at South Carolina [SEC]	W, 9-0	[6]	9-8-0	0-3-1	23-8 [7-1]	Fico [11-4]	632	1:50
March 28	at McNeese State	W, 4-0	7	4-5-0	0-4-3	24-8 [7-1]	Mack [11-4]	794	1:51
March 30	Arkansas [SEC]	W, 1-0	7	1-7-1	0-3-1	25-8 [8-1]	Fico [12-4]	1,389	1:59
March 31	Arkansas [SEC]	W, 9-1	[5]	9-11-0	1-3-1	26-8 [9-1]	Mack [12-4]	1,421	1:33
April 1	Arkansas [SEC]	W, 3-2	7	3-7-0	2-3-1	27-8 [10-1]	Fico [13-4]	1,426	2:01
April 4	Nicholls State	W, 6-1	7	6-9-0	1-6-1	28-8 [10-1]	Patterson [3-0]	1,122	1:58
April 6	at No. 2 Alabama [SEC]	L, 6-0	7	0-4-2	6-5-0	28-9 [10-2]	Mack [12-5]	3,266	2:14
April 7	at No. 2 Alabama [SEC]	W, 3-2	7	3-5-0	2-4-0	29-9 [11-2]	Fico [14-4]	3,521	2:23
April 8	at No. 2 Alabama [SEC]	L, 6-0	7	0-1-0	6-7-0	29-10 [11-3]	Mack [12-6]	2,684	1:54
April 13	at No. 10 Tennessee [SEC]	L, 2-0	7	0-3-0	2-6-0	29-11 [11-4]	Fico [14-5]	1,514	1:50
April 14	at No. 10 Tennessee [SEC]	L, 4-2	7	2-2-0	4-7-0	29-12 [11-5]	Mack [12-7]	1,609	1:55
April 15	at No. 10 Tennessee [SEC]	L, 10-2	[6]	2-6-3	10-13-0	29-13 [11-6]	Fico [14-6]	1,845	2:17
April 17	McNeese State	W, 2-1	7	2-5-1	1-7-0	30-13 [11-6]	Patterson [4-0]	855	1:53
April 18	No. 22 Florida State	L, 8-1	7	1-5-1	1-7-1	30-14 [11-6]	Mack [12-8]	1,316	2:14
April 20	Ole Miss [SEC]	W, 4-0	7	4-5-1	0-3-0	31-14 [12-6]	Fico [15-6]	1,168	1:54
April 21	Ole Miss [SEC]	W, 2-1	7	2-3-1	1-8-1	32-14 [13-6]	Mack [13-8]	1,815	1:59
April 22	Ole Miss [SEC]	L, 1-0	7	0-2-0	1-4-0	32-15 [13-7]	Fico [15-7]	1,645	1:57
April 24	at No. 2 Florida [SEC]	L, 2-1	[8]	1-4-0	2-5-2	32-16 [13-8]	Fico [15-8]	963	2:11
April 24	at No. 2 Florida [SEC]	W, 1-0	7	1-6-1	0-4-0	33-16 [14-8]	Mack [14-8]	963	2:05
April 27	No. 12 Georgia [SEC]	L, 1-0	[15]	0-1-1	1-8-0	33-17 [14-9]	Fico [15-9]	1,489	3:50
April 28	No. 12 Georgia [SEC]	L, 6-1	7	1-5-1	6-8-0	33-18 [14-10]	Mack [14-9]	1,750	2:13
April 29	No. 12 Georgia [SEC]	W, 1-0	7	1-4-0	0-4-1	34-18 [15-10]	Fico [16-9]	1,315	1:38
May 4	at Kentucky [SEC]	L, 4-3	[8]	3-4-1	4-4-41	34-19 [15-11]	Fico [16-10]	922	2:20
May 5	at Kentucky [SEC]	L, 2-1	7	1-6-0	2-4-1	34-20 [15-12]	Mack [14-10]	1,151	1:53
May 6	at Kentucky [SEC]	L, 1-0	7	0-0-0	1-4-0	34-21 [15-13]	Fico [16-11]	1,554	1:54
May 10	vs. No. 7 Florida [6]	L, 1-0	7	0-2-0	1-2-0	34-22 [15-13]	Mack [14-11]	2,218	2:04
May 18	vs. Texas State [7]	W, 1-0	7	1-3-1	0-2-0	35-22 [15-13]	Fico [17-11]	1,265	1:33
May 19	at No. 14 Texas A&M [7]	W, 2-0	7	2-5-0	0-2-1	36-22 [15-13]	Fico [18-11]	1,336	1:49
May 20	at No. 14 Texas A&M [7]	W, 2-1	7	2-6-0	1-3-2	37-22 [15-13]	Mack [15-11]	1,294	1:52
May 26	at No. 10 Missouri [8]	W, 6-1	7	6-9-0	1-8-1	38-22 [15-13]	Fico [19-11]	2,253	2:34
May 27	at No. 10 Missouri [8]	L, 5-1	[12]	1-5-4	5-7-0	38-23 [15-13]	Mack [15-12]	1,627	3:42
May 27	at No. 10 Missouri [8]	W, 3-1	7	3-2-1	1-2-0	39-23 [15-13]	Fico [20-11]	1,424	1:38

All home games are bolded and played at Tiger Park; Rankings reflect NFCA and USA Softball Top 25 polls on day of game; [1] Tiger Classic [Tiger Park]; [2] Louisville Slugger Desert Classic [Las Vegas, Nev.]; [3] Tiger Invitational [Tiger Park]; [4] The Preview [Norman/Oklahoma City/Stillwater, Okla.]; [5] Purple & Gold Challenge [Baton Rouge]; [6] SEC Tournament [Tuscaloosa, Ala.]; [7] NCAA College Station Regional [College Station, Texas]; [8] NCAA Columbia Super Regional [Columbia, Mo.]; [9] Women's College World Series [Oklahoma City, Okla.]

DATE	OPPONENT	1ST	2ND	3RD	4TH	5TH	6TH	7TH	8TH	9TH
Feb. 10	Penn State [1]	Heyward	Santos	Langoni	Kuhn	Russell	Applegate	Wray	McCasland	Falcon
Feb. 11	No. 15 Michigan [1]	Applegate	Heyward	Santos	Langoni	Kuhn	McCasland	Russell	Wray	Falcon
Feb. 11	Penn State [1]	Applegate	Heyward	Santos	Langoni	Kuhn	Alcaraz	Wray	Houston	Blades
Feb. 12	Louisiana Tech [1]	Applegate	Heyward	Langoni	Santos	Kuhn	McCasland	Russell	Alcaraz	Falcon
Feb. 18	vs. DePaul [2]	Applegate	Heyward	Langoni	Santos	Kuhn	McCasland	Russell	Wray	Falcon
Feb. 18	vs. Cal State Northridge [2]	Applegate	Falcon	Santos	Langoni	Alcaraz	Wray	Houston	Pizer	Heyward
Feb. 19	vs. No. 3 California [2]	Applegate	Falcon	Langoni	Santos	Kuhn	McCasland	Wray	Russell	Heyward
Feb. 19	vs. Utah State [2]	Applegate	Falcon	Langoni	Santos	Wray	Heyward	Houston	Supak	Andrews
Feb. 21	Southeastern Louisiana	Applegate	Falcon	Langoni	Kuhn	Wray	Alcaraz	McCasland	Russell	Heyward
Feb. 25	South Alabama [3]	Applegate	Heyward	Langoni	Santos	Wray	Alcaraz	Supak	Houston	Trosclair
Feb. 25	McNeese State [3]	Applegate	Heyward	Langoni	Santos	Wray	Alcaraz	Supak	Russell	Trosclair
Feb. 26	South Alabama [3]	Applegate	Heyward	Langoni	Santos	Wray	Alcaraz	Supak	Russell	Trosclair
Feb. 26	Alcorn State [3]	Andrews	Heyward	Langoni	Santos	Wray	Alcaraz	Kuhn	Houston	Pizer
March 2	at No. 8 Oklahoma [4]	Applegate	Trosclair	Langoni	Santos	Wray	Alcaraz	Supak	Houston	Andrews
March 3	vs. No. 23 Oklahoma State [4]	Applegate	Trosclair	Langoni	Santos	Supak	Alcaraz	McCasland	Houston	Andrews
March 3	vs. No. 8 Oklahoma [4]	Applegate	Trosclair	Langoni	Santos	Supak	Alcaraz	McCasland	Russell	Andrews
March 4	at No. 23 Oklahoma State [4]	Applegate	Trosclair	Langoni	Santos	Supak	Alcaraz	McCasland	Russell	Andrews
March 7	at Nicholls State	Applegate	Andrews	Falcon	Langoni	Supak	McCasland	Houston	Kuhn	Trosclair
March 9	Mississippi Valley State [5]	Applegate	Falcon	Langoni	Santos	Supak	McCasland	Alcaraz	Russell	Boulet
March 9	Troy [5]	Applegate	Falcon	Langoni	Santos	Supak	McCasland	Houston	Blades	Andrews
March 10	Troy [5]	Applegate	Falcon	Langoni	Santos	Supak	McCasland	Pizer	Russell	Andrews
March 10	Mississippi Valley State [5]	Applegate	Falcon	Langoni	Supak	Kuhn	Wray	Houston	Vermeulen	Andrews
March 14	No. 20 Auburn [SEC]	Applegate	Falcon	Langoni	Santos	Supak	McCasland	Kuhn	Houston	Andrews
March 14	No. 20 Auburn [SEC]	Applegate	Falcon	Langoni	Santos	Supak	McCasland	Russell	Kuhn	Andrews
March 16	Mississippi State [SEC]	Applegate	Blades	Langoni	Falcon	Supak	McCasland	Wray	Russell	Pizer
March 17	Mississippi State [SEC]	Applegate	Blades	Langoni	Falcon	Supak	McCasland	Wray	Houston	Pizer
March 18	Mississippi State [SEC]	Applegate	Blades	Langoni	Falcon	Supak	Alcaraz	Houston	Wray	Pizer
March 20	Georgia Tech	Blades	Andrews	Langoni	Supak	Applegate	Houston	Alcaraz	Wray	Pizer
March 23	at South Carolina [SEC]	Andrews	Blades	Langoni	Santos	Falcon	Applegate	Wray	Russell	Supak
March 24	at South Carolina [SEC]	Andrews	Blades	Langoni	Santos	Falcon	Applegate	Houston	Wray	Supak
March 25	at South Carolina [SEC]	Andrews	Blades	Langoni	Santos	Falcon	Applegate	Houston	Wray	Supak
March 28	at McNeese State	Andrews	Blades	Langoni	Santos	Falcon	Applegate	Houston	Wray	Supak
March 30	Arkansas [SEC]	Andrews	Blades	Langoni	Santos	Falcon	Applegate	Wray	Russell	Kuhn
March 31	Arkansas [SEC]	Andrews	Blades	Langoni	Santos	Falcon	Applegate	Houston	Wray	Kuhn
April 1	Arkansas [SEC]	Andrews	Blades	Langoni	Santos	Falcon	Applegate	Houston	Wray	Kuhn
April 4	Nicholls State	Andrews	Heyward	Langoni	Santos	Applegate	Kuhn	McCasland	Russell	Alcaraz
April 6	at No. 2 Alabama [SEC]	Andrews	Blades	Langoni	Santos	Falcon	Applegate	Houston	Wray	Kuhn
April 7	at No. 2 Alabama [SEC]	Andrews	Blades	Langoni	Santos	Falcon	Applegate	Wray	Russell	Supak
April 8	at No. 2 Alabama [SEC]	Andrews	Blades	Langoni	Santos	Falcon	Applegate	Wray	Russell	Supak
April 13	at No. 10 Tennessee [SEC]	Andrews	Blades	Langoni	Santos	Falcon	Applegate	Wray	Russell	Kuhn
April 14	at No. 10 Tennessee [SEC]	Andrews	Blades	Langoni	Santos	Falcon	Applegate	Houston	Wray	Pizer
April 15	at No. 10 Tennessee [SEC]	Andrews	Blades	Langoni	Santos	Falcon	Applegate	Wray	Russell	Kuhn
April 17	McNeese State	Andrews	Heyward	Langoni	Santos	Falcon	Wray	Houston	Supak	Trosclair
April 18	No. 22 Florida State	Andrews	Blades	Langoni	Santos	Falcon	Applegate	Wray	Russell	Mack
April 20	Ole Miss [SEC]	Andrews	Blades	Langoni	Santos	Falcon	Applegate	Wray	Russell	Kuhn
April 21	Ole Miss [SEC]	Andrews	Blades	Langoni	Santos	Falcon	Applegate	Wray	Kuhn	Houston
April 22	Ole Miss [SEC]	Andrews	Blades	Langoni	Santos	Falcon	Applegate	Wray	Russell	Supak
April 24	at No. 2 Florida [SEC]	Andrews	Blades	Langoni	Santos	Falcon	Applegate	Wray	Russell	Supak
April 24	at No. 2 Florida [SEC]	Andrews	Blades	Langoni	Santos	Falcon	Applegate	Wray	Houston	Supak
April 27	No. 12 Georgia [SEC]	Andrews	Blades	Langoni	Santos	Falcon	Applegate	Wray	Russell	Supak
April 28	No. 12 Georgia [SEC]	Andrews	McCasland	Langoni	Santos	Falcon	Applegate	Wray	Supak	Houston
April 29	No. 12 Georgia [SEC]	Andrews	Trosclair	Langoni	Santos	Wray	Applegate	Russell	Mack	Pizer
May 4	at Kentucky [SEC]	Andrews	Trosclair	Langoni	Santos	Wray	Applegate	Falcon	Russell	Supak
May 5	at Kentucky [SEC]	Langoni	Trosclair	Santos	Falcon	Wray	Andrews	Applegate	Mack	Supak
May 6	at Kentucky [SEC]	Andrews	Trosclair	Santos	Falcon	Langoni	Applegate	Wray	Russell	Supak
May 10	vs. No. 7 Florida [6]	Andrews	Trosclair	Langoni	Santos	Falcon	Applegate	Wray	Russell	Supak
May 18	vs. Texas State [7]	Heyward	Blades	Langoni	Santos	Falcon	Applegate	Wray	Russell	Supak
May 19	at No. 14 Texas A&M [7]	Andrews	Heyward	Langoni	Santos	Falcon	Applegate	Wray	Russell	Supak
May 20	at No. 14 Texas A&M [7]	Andrews	Heyward	Langoni	Santos	Falcon	Applegate	Wray	Houston	Supak
May 26	at No. 10 Missouri [8]	Andrews	Heyward	Langoni	Santos	Falcon	Applegate	Wray	Russell	Supak
May 27	at No. 10 Missouri [8]	Andrews	Heyward	Langoni	Santos	Falcon	Applegate	Wray	Houston	Supak
May 27	at No. 10 Missouri [8]	Andrews	Heyward	Langoni	Santos	Falcon	Applegate	Wray	Russell	Supak

All home games are bolded and played at Tiger Park; Rankings reflect NFCA and USA Softball Top 25 polls on day of game; [1] Tiger Classic [Tiger Park]; [2] Louisville Slugger Desert Classic [Las Vegas, Nev.]; [3] Tiger Invitational [Tiger Park]; [4] The Preview [Norman/Oklahoma City/Stillwater, Okla.]; [5] Purple & Gold Challenge [Baton Rouge]; [6] SEC Tournament [Tuscaloosa, Ala.]; [7] NCAA College Station Regional [College Station, Texas]; [8] NCAA Columbia Super Regional [Columbia, Mo.]; [9] Women's College World Series [Oklahoma City, Okla.]

DATE	OPPONENT	P	C	1B	2B	SS	3B	LF	CF	RF	DP
Feb. 10	Penn State [1]	Mack	Russell	Kuhn	Falcon	Santos	Wray	Langoni	Heyward	Applegate	McCasland
Feb. 11	No. 15 Michigan [1]	Mack	Russell	Kuhn	Falcon	Santos	Wray	Langoni	Heyward	Applegate	McCasland
Feb. 11	Penn State [1]	Fico	Houston	Kuhn	Alcaraz	Santos	Wray	Langoni	Heyward	Applegate	Blades
Feb. 12	Louisiana Tech [1]	Fico	Russell	Kuhn	Alcaraz	Falcon	McCasland	Langoni	Heyward	Applegate	Santos
Feb. 18	vs. DePaul [2]	Fico	Russell	Kuhn	Falcon	Santos	Wray	Langoni	Heyward	Applegate	McCasland
Feb. 18	vs. Cal State Northridge [2]	Mack	Houston	Pizer	Alcaraz	Falcon	Wray	Langoni	Heyward	Applegate	Santos
Feb. 19	vs. No. 3 California [2]	Mack	Russell	Kuhn	Falcon	Santos	Wray	Langoni	Heyward	Applegate	McCasland
Feb. 19	vs. Utah State [2]	Fico	Houston	Supak	Falcon	Santos	Wray	Langoni	Heyward	Applegate	Andrews
Feb. 21	Southeastern Louisiana	Mack	Russell	Kuhn	Alcaraz	Falcon	Wray	Langoni	Heyward	Applegate	McCasland
Feb. 25	South Alabama [3]	Mack	Houston	Supak	Alcaraz	Santos	Wray	Langoni	Heyward	Applegate	Trosclair
Feb. 25	McNeese State [3]	Fico	Russell	Supak	Alcaraz	Santos	Wray	Langoni	Heyward	Applegate	Trosclair
Feb. 26	South Alabama [3]	Fico	Russell	Supak	Alcaraz	Santos	Wray	Langoni	Heyward	Applegate	Trosclair
Feb. 26	Alcorn State [3]	Patterson	Houston	Pizer	Alcaraz	Santos	Wray	Langoni	Heyward	Andrews	Kuhn
March 2	at No. 8 Oklahoma [4]	Mack	Houston	Supak	Trosclair	Santos	Wray	Langoni	Andrews	Applegate	Alcaraz
March 3	vs. No. 23 Oklahoma State [4]	Mack	Houston	Supak	Alcaraz	Santos	McCasland	Langoni	Andrews	Applegate	Trosclair
March 3	vs. No. 8 Oklahoma [4]	Fico	Russell	Supak	Alcaraz	Santos	McCasland	Langoni	Andrews	Applegate	Trosclair
March 4	at No. 23 Oklahoma State [4]	Fico	Russell	Supak	Alcaraz	Santos	McCasland	Langoni	Andrews	Applegate	Trosclair
March 7	at Nicholls State	Fico	Houston	Kuhn	Trosclair	Supak	McCasland	Langoni	Andrews	Applegate	Falcon
March 9	Mississippi Valley State [5]	Patterson	Russell	Supak	Alcaraz	Santos	McCasland	Langoni	Boulet	Applegate	Falcon
March 9	Troy [5]	Mack	Houston	Supak	Falcon	Santos	McCasland	Langoni	Andrews	Applegate	Blades
March 10	Troy [5]	Fico	Russell	Supak	Falcon	Santos	McCasland	Langoni	Andrews	Applegate	Pizer
March 10	Mississippi Valley State [5]	Mack	Houston	Kuhn	Falcon	Supak	Wray	Langoni	Andrews	Applegate	Vermeulen
March 14	No. 20 Auburn [SEC]	Mack	Houston	Kuhn	Falcon	Santos	McCasland	Langoni	Andrews	Applegate	Supak
March 14	No. 20 Auburn [SEC]	Fico	Russell	Kuhn	Falcon	Santos	McCasland	Langoni	Andrews	Applegate	Supak
March 16	Mississippi State [SEC]	Fico	Russell	Pizer	Falcon	Supak	Wray	Langoni	Blades	Applegate	McCasland
March 17	Mississippi State [SEC]	Mack	Houston	Pizer	Falcon	Supak	Wray	Langoni	Blades	Applegate	McCasland
March 18	Mississippi State [SEC]	Fico	Houston	Pizer	Alcaraz	Falcon	Wray	Langoni	Blades	Applegate	Supak
March 20	Georgia Tech	Mack	Houston	Pizer	Alcaraz	Supak	Wray	Langoni	Andrews	Applegate	Blades
March 23	at South Carolina [SEC]	Fico	Russell	Supak	Falcon	Santos	Wray	Langoni	Andrews	Applegate	Blades
March 24	at South Carolina [SEC]	Mack	Houston	Supak	Falcon	Santos	Wray	Langoni	Andrews	Applegate	Blades
March 25	at South Carolina [SEC]	Fico	Houston	Supak	Falcon	Santos	Wray	Langoni	Andrews	Applegate	Blades
March 28	at McNeese State	Mack	Houston	Supak	Falcon	Santos	Wray	Langoni	Andrews	Applegate	Blades
March 30	Arkansas [SEC]	Fico	Russell	Kuhn	Falcon	Santos	Wray	Langoni	Andrews	Applegate	Blades
March 31	Arkansas [SEC]	Mack	Houston	Kuhn	Falcon	Santos	Wray	Langoni	Andrews	Applegate	Blades
April 1	Arkansas [SEC]	Fico	Houston	Kuhn	Falcon	Santos	Wray	Langoni	Andrews	Applegate	Blades
April 4	Nicholls State	Patterson	Russell	Kuhn	Alcaraz	Santos	McCasland	Langoni	Heyward	Andrews	Applegate
April 6	at No. 2 Alabama [SEC]	Mack	Houston	Kuhn	Falcon	Santos	Wray	Langoni	Andrews	Applegate	Blades
April 7	at No. 2 Alabama [SEC]	Fico	Russell	Supak	Falcon	Santos	Wray	Langoni	Andrews	Applegate	Blades
April 8	at No. 2 Alabama [SEC]	Mack	Russell	Supak	Falcon	Santos	Wray	Langoni	Andrews	Applegate	Blades
April 13	at No. 10 Tennessee [SEC]	Fico	Russell	Kuhn	Falcon	Santos	Wray	Langoni	Andrews	Blades	Applegate
April 14	at No. 10 Tennessee [SEC]	Mack	Houston	Pizer	Falcon	Santos	Wray	Langoni	Andrews	Blades	Applegate
April 15	at No. 10 Tennessee [SEC]	Fico	Russell	Kuhn	Falcon	Santos	Wray	Langoni	Andrews	Blades	Applegate
April 17	McNeese State	Patterson	Houston	Supak	Trosclair	Santos	Wray	Langoni	Heyward	Andrews	Falcon
April 18	No. 22 Florida State	Mack	Russell	Pizer	Falcon	Santos	Wray	Langoni	Andrews	Applegate	Blades
April 20	Ole Miss [SEC]	Fico	Russell	Kuhn	Falcon	Santos	Wray	Langoni	Andrews	Applegate	Blades
April 21	Ole Miss [SEC]	Mack	Houston	Kuhn	Falcon	Santos	Wray	Langoni	Andrews	Applegate	Blades
April 22	Ole Miss [SEC]	Fico	Russell	Supak	Falcon	Santos	Wray	Langoni	Andrews	Applegate	Blades
April 24	at No. 2 Florida [SEC]	Fico	Russell	Supak	Falcon	Santos	Wray	Langoni	Andrews	Applegate	Blades
April 24	at No. 2 Florida [SEC]	Mack	Houston	Supak	Falcon	Santos	Wray	Langoni	Andrews	Applegate	Blades
April 27	No. 12 Georgia [SEC]	Fico	Russell	Supak	Falcon	Santos	Wray	Langoni	Andrews	Applegate	Blades
April 28	No. 12 Georgia [SEC]	Mack	Houston	Supak	Falcon	Santos	Wray	Langoni	Andrews	Applegate	McCasland
April 29	No. 12 Georgia [SEC]	Fico	Russell	Pizer	Trosclair	Santos	Wray	Langoni	Andrews	Applegate	Mack
May 4	at Kentucky [SEC]	Fico	Russell	Supak	Falcon	Santos	Wray	Langoni	Andrews	Applegate	Trosclair
May 5	at Kentucky [SEC]	Mack	Houston	Supak	Falcon	Santos	Wray	Langoni	Andrews	Applegate	Trosclair
May 6	at Kentucky [SEC]	Fico	Russell	Supak	Falcon	Santos	Wray	Langoni	Andrews	Applegate	Trosclair
May 10	vs. No. 7 Florida [6]	Mack	Russell	Supak	Falcon	Santos	Wray	Langoni	Andrews	Applegate	Trosclair
May 18	vs. Texas State [7]	Fico	Russell	Supak	Falcon	Santos	Wray	Langoni	Heyward	Applegate	Blades
May 19	at No. 14 Texas A&M [7]	Fico	Russell	Supak	Falcon	Santos	Wray	Langoni	Heyward	Andrews	Applegate
May 20	at No. 14 Texas A&M [7]	Mack	Houston	Supak	Falcon	Santos	Wray	Langoni	Heyward	Andrews	Applegate
May 26	at No. 10 Missouri [8]	Fico	Russell	Supak	Falcon	Santos	Wray	Langoni	Heyward	Andrews	Applegate
May 27	at No. 10 Missouri [8]	Mack	Houston	Supak	Falcon	Santos	Wray	Langoni	Heyward	Andrews	Applegate
May 27	at No. 10 Missouri [8]	Fico	Russell	Supak	Falcon	Santos	Wray	Langoni	Heyward	Andrews	Applegate

All home games are bolded and played at Tiger Park; Rankings reflect NFCA and USA Softball Top 25 polls on day of game; [1] Tiger Classic [Tiger Park]; [2] Louisville Slugger Desert Classic [Las Vegas, Nev.]; [3] Tiger Invitational [Tiger Park]; [4] The Preview [Norman/Oklahoma City/Stillwater, Okla.]; [5] Purple & Gold Challenge [Baton Rouge]; [6] SEC Tournament [Tuscaloosa, Ala.]; [7] NCAA College Station Regional [College Station, Texas]; [8] NCAA Columbia Super Regional [Columbia, Mo.]; [9] Women's College World Series [Oklahoma City, Okla.]



#00 ASHLEY LANGONI • SR. • OF • R-R • PUEBLO, COLORADO

SEASON HIGHS

Runs	4 [2x]	at South Carolina	03/25/12
Hits	3	at No. 23 Oklahoma State	03/04/12
RBIs	3 [4x]	Mississippi Valley State	03/10/12
Hit Streak	4		03/30/12-04/04/12

CAREER HIGHS

Runs	4 [2x]	at South Carolina	03/25/12
Hits	3 [6x]	at No. 23 Oklahoma State	03/04/12
RBIs	5	at Arkansas	04/01/11
Hit Streak	7		03/13/11-04/01/11



#1 RIKKI ALCARAZ • FR. • INF • L-R • ORLAND PARK, ILLINOIS

SEASON HIGHS

Runs	2 [3x]	Mississippi State	03/18/12
Hits	2	South Alabama	02/25/12
RBIs	2	Louisiana Tech	02/12/12
Hit Streak	5		02/21/12-02/26/12

CAREER HIGHS

Runs	2 [3x]	Mississippi State	03/18/12
Hits	2	South Alabama	02/25/12
RBIs	2	Louisiana Tech	02/12/12
Hit Streak	5		02/21/12-02/26/12



#2 JULIANA SANTOS • SR. • INF • R-R • NEWMAN, CALIFORNIA

SEASON HIGHS

Runs	2 [3x]	Troy	03/09/12
Hits	3 [2x]	at South Carolina	03/25/12
RBIs	3	at South Carolina	03/25/12
Hit Streak	4 [3x]		03/30/12-04/04/12

CAREER HIGHS

Runs	2 [14x]	Troy	03/09/12
Hits	5	at Arkansas	04/02/11
RBIs	5	Kentucky	03/08/09
Hit Streak	6		04/16/11-04/23/11



#3 CASSIE TROSCLAIR • SR. • INF • L-R • NEW ORLEANS, LA.

SEASON HIGHS

Runs	1 [2x]	Nicholls State	04/04/12
Hits	1 [8x]	at Kentucky	05/05/12
RBIs	2	vs. No. 23 Oklahoma State	03/03/12
Hit Streak	3		05/10/12-05/27/12

CAREER HIGHS

Runs	2 [3x]	vs. Sacred Heart	05/21/11
Hits	3 [2x]	vs. Sacred Heart	05/21/11
RBIs	2 [2x]	vs. No. 23 Oklahoma State	03/03/12
Hit Streak	3 [2x]		05/10/12-05/27/12



#4 MORGAN RUSSELL • SR. • C • R-R • EDMOND, OKLAHOMA

SEASON HIGHS

Runs		
1 [3x]	at South Carolina	03/23/12
Hits		
2 [2x]	McNeese State	02/25/12
RBIs		
2 [3x]	at No. 10 Missouri	05/27/12
Hit Streak		
2 [2x]		04/13/12-04/15/12

CAREER HIGHS

Runs		
2 [2x]	Purdue	02/13/11
Hits		
3 [2x]	South Carolina	05/07/11
RBIs		
3	UAB	02/22/09
Hit Streak		
5		02/11/11-02/18/11



#6 A.J. ANDREWS • FR. • OF • L-R • OLDSMAR, FLORIDA

SEASON HIGHS

Runs		
2 [3x]	at South Carolina	03/24/12
Hits		
2 [7x]	at No. 10 Missouri	05/26/12
RBIs		
3	at South Carolina	03/25/12
Hit Streak		
2 [9x]		05/04/12-05/05/12

CAREER HIGHS

Runs		
2 [3x]	at South Carolina	03/24/12
Hits		
2 [7x]	at No. 10 Missouri	05/26/12
RBIs		
3	at South Carolina	03/25/12
Hit Streak		
2 [9x]		05/04/12-05/05/12



#9 ALEX BOULET • SO. • OF • L-L • CROWLEY, LOUISIANA

SEASON HIGHS

Runs		
1 [9x]	No. 12 Georgia	04/29/12
Hits		
NA		
RBIs		
NA		
Hit Streak		
NA		

CAREER HIGHS

Runs		
2 [2x]	Nicholls State	04/06/11
Hits		
2	Nicholls State	04/06/11
RBIs		
1 [3x]	vs. Sacred Heart	05/22/11
Hit Streak		
2		04/23/11-04/27/11



#10 ASHLEY APPLGATE • SR. • OF • L-R • MODESTO, CALIFORNIA

SEASON HIGHS

Runs		
2 [2x]	Mississippi State	03/16/12
Hits		
2 [6x]	at No. 10 Missouri	05/27/12
RBIs		
2	Arkansas	04/01/12
Hit Streak		
6		03/25/12-04/04/12

CAREER HIGHS

Runs		
2 [10x]	Mississippi State	03/16/12
Hits		
4	Kentucky	03/07/09
RBIs		
3	at Southeastern Louisiana	03/24/10
Hit Streak		
6 [4x]		03/25/12-04/04/12



#11 DYLAN SUPAK • FR. • UTL • R-R • LAGRANGE, TEXAS

SEASON HIGHS

Runs	2	at Nicholls State	03/07/12
Hits	2 [5x]	at South Carolina	03/23/12
RBIs	2 [5x]	Mississippi State	03/16/12
Hit Streak	3		03/07/12-03/10/12

CAREER HIGHS

Runs	2	at Nicholls State	03/07/12
Hits	2 [5x]	at South Carolina	03/23/12
RBIs	2 [5x]	Mississippi State	03/16/12
Hit Streak	3		03/07/12-03/10/12



#12 HEIDI PIZER • SR. • INF • R-R • TIGARD, OREGON

SEASON HIGHS

Runs	2	Mississippi State	03/16/12
Hits	1 [5x]	No. 12 Georgia	04/28/12
RBIs	2	Mississippi Valley State	03/10/12
Hit Streak	4		03/07/12-03/16/12

CAREER HIGHS

Runs	2 [2x]	Mississippi State	03/16/12
Hits	2 [2x]	Louisiana Tech	02/13/11
RBIs	3	at Nicholls State	04/14/10
Hit Streak	4		03/07/12-03/16/12



#13 KATIE GUILLORY • SR. • OF • L-L • LAFAYETTE, LOUISIANA

SEASON HIGHS

Runs	NA		
Hits	NA		
RBIs	NA		
Hit Streak	NA		

CAREER HIGHS

Runs	1 [21x]	vs. Sacred Heart	05/21/11
Hits	1 [3x]	Nicholls State	03/04/09
RBIs	1	UAB	02/21/09
Hit Streak	2		02/25/09-03/04/09



#16 LAUREN HOUSTON • JR. • C • R-R • YOUNGVILLE, LOUISIANA

SEASON HIGHS

Runs	2	Mississippi Valley State	03/10/12
Hits	2 [2x]	Mississippi State	03/18/12
RBIs	2	vs. Utah State	02/19/12
Hit Streak	2 [3x]		05/20/12-05/27/12

CAREER HIGHS

Runs	2	Mississippi Valley State	03/10/12
Hits	2 [8x]	Mississippi State	03/18/12
RBIs	3 [2x]	vs. Nicholls State	02/19/11
Hit Streak	3 [2x]		05/06/11-05/08/11



#18 TAMMY WRAY • SO. • INF • R-R • SOMERS, NEW YORK

SEASON HIGHS

Runs		
2	vs. Cal State Northridge	02/18/12
Hits		
2	Southeastern Louisiana	02/21/12
RBIs		
2	vs. Utah State	02/19/12
Hit Streak		
3 [2x]		04/17/12-04/20/12

CAREER HIGHS

Runs		
2 [6x]	vs. Cal State Northridge	02/18/12
Hits		
3	Southeastern Louisiana	02/16/11
RBIs		
3 [5x]	vs. Sacred Heart	05/21/11
Hit Streak		
6 [2x]		03/20/11-04/06/11



#23 JACEE BLADES • SO. • OF • L-R • BATON ROUGE, LOUISIANA

SEASON HIGHS

Runs		
1 [12x]	at No. 10 Missouri	05/27/12
Hits		
2 [3x]	No. 22 Florida State	04/18/12
RBIs		
2	at South Carolina	03/23/12
Hit Streak		
3 [2x]		03/28/12-03/31/12

CAREER HIGHS

Runs		
2	vs. Nicholls State	02/19/11
Hits		
3	vs. Nicholls State	02/19/11
RBIs		
2	at South Carolina	03/23/12
Hit Streak		
7		04/22/11-05/01/11



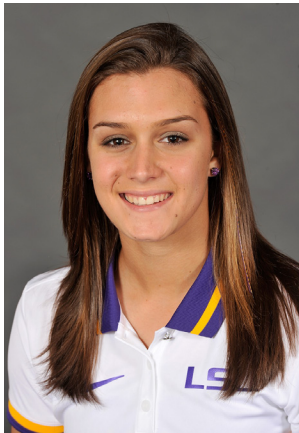
#25 SIMONE HEYWARD • SO. • OF • R-R • SACRAMENTO, CALIFORNIA

SEASON HIGHS

Runs		
2	Louisiana Tech	02/12/12
Hits		
2	Louisiana Tech	02/12/12
RBIs		
3	at No. 10 Missouri	05/27/12
Hit Streak		
3		02/21/12-02/25/12

CAREER HIGHS

Runs		
4	Louisiana Tech	02/11/11
Hits		
2 [12x]	Louisiana Tech	02/12/12
RBIs		
3	at No. 10 Missouri	05/27/12
Hit Streak		
5		05/20/11-02/11/12



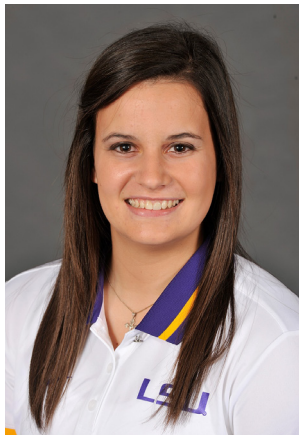
#28 TAMMY VERMEULEN • FR. • OF • L-R • PATCHOGUE, NEW YORK

SEASON HIGHS

Runs		
2	Mississippi Valley State	03/10/12
Hits		
1 [2x]	Mississippi Valley State	03/10/12
RBIs		
2	vs. Cal State Northridge	02/19/12
Hit Streak		
2		02/19/12-03/10/12

CAREER HIGHS

Runs		
2	Mississippi Valley State	03/10/12
Hits		
1 [2x]	Mississippi Valley State	03/10/12
RBIs		
2	vs. Cal State Northridge	02/19/12
Hit Streak		
2		02/19/12-03/10/12



#32 ALLISON FALCON • SO. • INF • R-R • DONALDSONVILLE, LOUISIANA

SEASON HIGHS

Runs		
2 [3x]	at Nicholls State	03/07/12
Hits		
3	vs. Cal State Northridge	02/18/12
RBIs		
3	at No. 10 Missouri	05/26/12
Hit Streak		
6 [2x]		03/28/12-04/07/12

CAREER HIGHS

Runs		
3	Nicholls State	03/23/10
Hits		
3 [2x]	vs. Cal State Northridge	02/18/11
RBIs		
3 [2x]	at No. 10 Missouri	05/26/12
Hit Streak		
6 [2x]		03/28/12-04/07/12



#33 KAILEY MCCASLAND • FR. • UTL • R-R • SAN CLEMENTE, CALIFORNIA

SEASON HIGHS

Runs		
2	vs. No. 23 Oklahoma State	03/03/12
Hits		
2 [3x]	Nicholls State	04/04/12
RBIs		
3	vs. No. 23 Oklahoma State	03/03/12
Hit Streak		
3		03/07/12-03/09/12

CAREER HIGHS

Runs		
2	vs. No. 23 Oklahoma State	03/03/12
Hits		
2 [3x]	Nicholls State	04/04/12
RBIs		
3	vs. No. 23 Oklahoma State	03/03/12
Hit Streak		
3		03/07/12-03/09/12



#47 ASHLEIGH KUHN • SO. • UTL • R-R • NEDERLAND, TEXAS

SEASON HIGHS

Runs		
1 [3x]	Mississippi State	03/18/12
Hits		
2 [3x]	Nicholls State	04/04/12
RBIs		
4	Mississippi Valley State	03/10/12
Hit Streak		
3		03/02/10-03/12/12

CAREER HIGHS

Runs		
1 [3x]	Mississippi State	03/18/12
Hits		
2 [3x]	Nicholls State	04/04/12
RBIs		
4	Mississippi Valley State	03/10/12
Hit Streak		
3		03/02/10-03/12/12



#20 MEGHAN PATTERSON • SO. • P • R-R • DESTREHAN, LOUISIANA

SEASON HIGHS			CAREER HIGHS		
Runs			Runs		
8	vs. No. 3 California	02/19/12	8	vs. No. 3 California	02/19/12
Hits			Hits		
6 [2x]	Nicholls State	04/04/12	10	vs. No. 14 California	02/26/11
Walks			Walks		
5	vs. No. 3 California	02/19/12	5	vs. No. 3 California	02/19/12
Strikeouts			Strikeouts		
13	Alcorn State	02/26/12	13	Alcorn State	02/26/12



#37 RACHELE FICO • JR. • P • R-R • OXFORD, CONNECTICUT

SEASON HIGHS			CAREER HIGHS		
Runs			Runs		
7	Mississippi State	03/16/12	7 [2x]	Mississippi State	03/16/12
Hits			Hits		
12	at No. 23 Oklahoma State	03/04/12	13	No. 24 Kentucky	03/18/11
Walks			Walks		
6 [5x]	at No. 14 Texas A&M	05/20/12	6 [7x]	at No. 14 Texas A&M	05/20/12
Strikeouts			Strikeouts		
13	No. 12 Georgia	04/27/12	18	vs. Syracuse	05/20/11



#44 BRITTANY MACK • SR. • P • R-R • ROUND ROCK, TEXAS

SEASON HIGHS			CAREER HIGHS		
Runs			Runs		
7	at No. 8 Oklahoma	03/02/12	7	at No. 8 Oklahoma	03/02/12
Hits			Hits		
11	No. 15 Michigan	02/11/12	12	Mississippi State	04/10/10
Walks			Walks		
6	vs. No. 23 Oklahoma State	03/03/12	8	No. 1 Alabama	04/08/11
Strikeouts			Strikeouts		
17	at No. 10 Missouri	05/27/12	17	at No. 10 Missouri	05/27/12