



2012 LSU Softball



No. 23 LSU vs. McNeese St & No. 22 Florida St

April 17-18 • 6 p.m. • Tiger Park

Radio: 91.1-104.9 FM • Live Stats: LSUsports.net

Live Updates: www.Facebook.com/LSUsoftball



SETTING THE SCENE

- ▶ No. 23 LSU begins a five-game week with a pair of mid-week home tilts versus McNeese State [Tuesday] and No. 23 Florida State [Wednesday]. First pitch for both games is slated for 6 p.m.
- ▶ LSU will look to bounce back after getting swept at No. 10 Tennessee where the Tigers were outscored by a 16-4 clip.
- ▶ LSU has won both of its meetings with McNeese State by 2-0 and 4-0 margins during the 2012 season. Recaps and box scores of the season series can be found on pages 7 and 8 of the notes packet.
- ▶ LSU will meet Florida State for the first time since an elimination game at the 2004 Women's College World Series. The Tigers won a 2-1 decision aided by Sara Fitzgerald's RBI single in the fourth inning and a complete game by Kristin Schmidt in the circle.
- ▶ Going back to the 2006 season, LSU has been ranked in 91 of the last 99 editions of the NFCA/USA Softball Top 25 polls. The Tigers have been ranked in both polls in three straight weeks. This week, LSU checks in at No. 23 in both polls.

SPORTS INFORMATION

Associate AD/SID	Michael Bonnette
Senior Associate SID	Kent Lowe
Senior Associate SID	Bill Franques
Associate SID (Softball)	Matt Dunaway
Dunaway's Email	mdunaway@lsu.edu
Dunaway's Office Phone	(225) 578-1869
Dunaway's Cell Phone	(225) 226-5034
Associate SID	Bill Martin
Associate SID	Will Stafford
Associate SID	Jake Terry
Student SIDs	Kevin Alvarez, Ashley Amoss
Student SIDs	Caroline Downer, Brooke Hochstelter
Student SIDs	Melani Johnson, Seth Medvin
Student SIDs	Jake Most, Jacie Scott
Publications Director	Jason Feirman
Graphics Design Coordinators	Krystal Bennett, Courtney Wilburn
Staff Photographer	Steve Franz
Photography Assistant	Chris Parent, Hilary Scheinuk
Administrative Specialist	Pam LeBlanc

WHAT'S INSIDE

Introduction/SEC Championship Tradition	1
Schedule/Results	1
Quick Facts/ Possible Starting Lineup/2012 Roster	2
Player Notes	3-6
SEC Standings & Schedule	3
Top 25 Polls/2012 Honors & Awards	4
Career Record Watch	5
Multi-Hit/Multi-RBI/Hitting Streak/ RPI Report	6
The Last Time/Inning-by-Inning	7
A Look Back: LSU vs. McNeese State	8-9
Statistics	10-15
Player Career/Season Highs	16-21

WHAT'S NEXT

- ▶ LSU plays host to Ole Miss for a SEC weekend series to continue a stretch of seven games in eight days. Game times are set for 6 p.m. [Friday & Saturday, Televised by CST] and 1 p.m. [Sunday].

SCHEDULE/RESULTS (29-13, 11-6 SEC)

FEBRUARY [9-4]

10 Penn State [1]	L, 5-3
11 No. 15/16 Michigan [1]	L, 2-1
11 Penn State [1]	W, 1-0 [8]
12 Louisiana Tech [1]	W, 8-0 [5]
18 vs. RV/RV DePaul [2]	L, 3-1
18 vs. Cal State Northridge [2]	W, 11-0 [5]
19 vs. No. 3/1 California	L, 14-3 [5]
19 vs. Utah State	W, 13-0 [5]
21 Southeastern Louisiana	W, 7-0
25 South Alabama [3, CST]	W, 5-4
25 NR/RV McNeese State [3]	W, 2-0
26 South Alabama [3]	W, 1-0
26 Alcorn State [3]	W, 2-0

MARCH [17-4]

2 at No. 8/9 Oklahoma [4]	L, 7-0
3 vs. No. 23/NR Oklahoma State [4]	W, 7-4
3 vs. No. 8/9 Oklahoma [4]	L, 5-0
4 at No. 23/NR Oklahoma State [4]	L, 1-0 [10]
7 at Nicholls State	W, 10-2 [5]
9 Mississippi Valley State [5]	W, 2-0
9 Troy [5]	W, 6-3
10 Troy [5]	W, 1-0
10 Mississippi Valley State [5]	W, 16-0 [5]
14 No. 20/No. 19 Auburn [SEC]	W, 4-1
14 No. 20/No. 19 Auburn [SEC]	L, 2-0
16 NR/RV Mississippi State [SEC]	W, 10-7
17 NR/RV Mississippi State [SEC]	W, 3-1
18 NR/RV Mississippi State [SEC]	W, 4-0
21 RV/RV Georgia Tech	W, 2-1
23 at South Carolina [SEC]	W, 5-0
24 at South Carolina [SEC]	W, 5-0
25 at South Carolina [SEC]	W, 9-0 [6]
28 at McNeese State	W, 4-0
30 Arkansas [SEC]	W, 1-0
31 Arkansas [SEC]	W, 9-1 [5]

APRIL [3-5]

1 Arkansas [SEC]	W, 3-2
4 Nicholls State	W, 6-1
6 at No. 2/2 Alabama [SEC, ESPN]	L, 6-0
7 at No. 2/2 Alabama [SEC]	W, 3-2
8 at No. 2/2 Alabama [SEC, FSN]	L, 6-0
11 at Southeastern Louisiana	PPD [Rain]
13 at No. 10/10 Tennessee [SEC]	L, 2-0
14 at No. 10/10 Tennessee [SEC, ESPN]	L, 4-2
15 at No. 10/10 Tennessee [SEC, ESPN]	L, 10-2 [6]
17 McNeese State	6 p.m.
18 No. 21/No. 22 Florida State	6 p.m.
20 Ole Miss [SEC, CST]	6 p.m.
21 Ole Miss [SEC, CST]	6 p.m.
22 Ole Miss [SEC]	1 p.m.
24 at No. 3/4 Florida [SEC, CSS]	4 p.m.
24 at No. 3/4 Florida [SEC, CSS]	6:30 p.m.
27 No. 11/11 Georgia [SEC]	6 p.m.
28 No. 11/11 Georgia [SEC, CST]	4 p.m.
29 No. 11/11 Georgia [SEC, CST]	1 p.m.

MAY/JUNE [0-0]

4 at Kentucky [SEC]	5 p.m.
5 at Kentucky [SEC]	12 p.m.
6 at Kentucky [SEC]	12 p.m.
10-12 SEC Tournament [6]	TBA
17-20 NCAA Regionals	TBA
24-27 NCAA Super Regionals	TBA
31-17 Women's College World Series	TBA

All game times are Central and subject to change; Rankings reflect NFCA and USA Softball Top 25 polls on day of game; Home games are bolded and played at Tiger Park; [SEC] Southeastern Conference game; [1] Tiger Classic [Tiger Park]; [2] Louisville Slugger Desert Classic [Las Vegas, Nev.]; [3] Tiger Invitational [Tiger Park]; [4] The Preview [Norman/Oklahoma City/Stillwater, Okla.]; [5] Purple & Gold Challenge [Baton Rouge]; [6] SEC Tournament [Tuscaloosa, Ala.]; [FSN] Fox Sports Network; [CSS] Charter Sports Southeast; [CST] Cox Sports Television; [ESPN, ESPN2, ESPN] SEC on ESPN Family of Networks.

LSU'S SEC CHAMPIONSHIP TRADITION

YEAR	EAST	WEST	OVERALL	TOURNAMENT
1997	South Carolina	LSU	South Carolina	South Carolina
1998	Florida	LSU	Florida	Alabama
1999	Tenn, S.C	LSU	LSU	LSU
2000	Kentucky	LSU	LSU	South Carolina
2001	South Carolina	LSU	LSU	LSU
2002	South Carolina	LSU	LSU	LSU
2003	Georgia	Alabama	Georgia	Alabama
2004	Tennessee	LSU	LSU	LSU
2005	Georgia	Alabama	Georgia	Alabama
2006	Georgia	Alabama	Alabama	Tennessee
2007	Tennessee	LSU	Tennessee	LSU
2008	Florida	Alabama	Florida	Florida
2009	Florida	Alabama	Florida	Florida
2010	Florida	Alabama	Alabama	Alabama
2011	Florida	Alabama	Alabama	Tennessee

CHAMPIONSHIPS	DIVISION	OVERALL	TOURNAMENT
LSU	8	5	5
Alabama	7	3	4
Florida	5	3	2
South Carolina	4	1	2
Tennessee	3	1	2
Georgia	3	2	0
Kentucky	1	0	0

QUICK FACTS

UNIVERSITY	
Location	Baton Rouge, La.
Founded	1860
Enrollment	28,771
Nickname	Tigers or Fighting Tigers
Colors	Purple and Gold
Mascot	Mike VI [live Bengal tiger]
Conference	Southeastern
Website	www.lsusports.net
President	Dr. John V. Lombardi
Chancellor	Dr. Michael V. Martin
NCAA Faculty Representative	Bill Demastes

ATHLETICS DEPARTMENT

Director of Athletics/Vice Chancellor	Joe Alleva
Senior Associate AD/Operations	Verge Ausberry
Senior Associate AD/Student Services & SWA	Miriam Segar
Senior Associate AD/External Affairs & Vice Chancellor for University Relations	Herb Vincent
Senior Associate AD/Business	Mark Ewing
Senior Associate AD/Compliance & Planning	Bo Bahnsen
Senior Associate AD/Facilities & Grounds	Ronnie Haliburton
Senior Associate AD/Internal Affairs & Project Development	Eddie Nunez
Assistant AD/Ticket Manager	Brian Broussard
Assistant AD/Marketing	Matt Shanklin

COACHING STAFF

Head Coach	Beth Torina
Record at LSU [Seasons]	29-13 [1]
Career Record [Seasons]	158-124 [5]
Assistant Coach	Howard Dobson
Year at LSU	1st Season
Assistant Coach	Lindsay Leftwich
Year at LSU	1st Season
Director of Operations	Quinlan Duhon
Year at LSU	3rd Season

TEAM INFORMATION

2011 Record [SEC]	40-18 [19-9 SEC]
2011 SEC Finish [Division]	4th [2nd West]
2011 SEC Tournament Finish	Quarterfinals
2011 Postseason	NCAA Regionals
Letterwinners Returning/Lost	13/2
Starters Returning/Lost	7/2
Pitchers Returning/Lost	3/0
Newcomers	6

FACILITY INFORMATION

Name [Capacity]	Tiger Park [2,489]
Dimensions [L-R]	200-210-220-210-200
Press Box Number	[225] 578-0154

PROGRAM HISTORY

All-Time Record [Percentage]	772-235-1 [.766]
NCAA Tournament Appearances	13
Years	1998-2004, 2006-2011
NCAA Tournament Record	38-26 [.594]
Women's College World Series Appearances	2
Years	2001 & 2004

SEC HISTORY

All-Time SEC Record [Percentage]	325-118-1 [.733]
SEC Western Division Titles	8
Years	1997-2002, 2004 & 2007
SEC Regular Season Titles	5
Years	1999, 2000, 2001, 2002, 2004
All-Time SEC Tournament Record	36-15 [.706]
SEC Tournament Titles	5
Years	1999, 2001, 2002, 2004, 2007

POSSIBLE STARTING LINEUP - DEPTH CHART

POS	NAME	HT	CL.	GP-GS	H-AB	AVG	OB%	SLG%	R	BB	2B	3B	HR	RBI	TB	SF-SH	SB-ATT
C	Morgan Russell	5-7	Sr.	22-21	9-44	.205	.364	.295	3	4	1	0	1	6	13	0-3	0-0
C	Lauren Houston	5-5	Jr.	22-21	9-39	.231	.466	.231	10	5	0	0	0	4	9	1-2	0-0
1B	Ashleigh Kuhn	5-7	So.	22-19	12-50	.240	.304	.280	3	5	2	0	0	11	14	1-1	0-1
1B	Dylan Supak	5-10	Fr.	29-25	16-67	.239	.320	.328	8	6	3	0	1	11	22	0-3	1-1
1B	Heidi Pizer	5-10	Sr.	19-8	4-23	.174	.296	.174	6	4	0	0	0	4	4	0-0	1-1
2B	Allison Falcon	5-4	So.	31-31	26-84	.310	.376	.429	15	5	2	1	2	17	36	0-2	5-6
2B	Rikki Alcaraz	5-2	Fr.	21-16	10-42	.238	.396	.310	13	10	3	0	0	4	13	0-0	2-3
SS	Juliana Santos	5-5	Sr.	35-35	29-95	.305	.398	.379	15	14	4	0	1	19	36	2-0	5-6
3B	Tammy Wray	5-7	So.	36-31	11-76	.145	.293	.158	6	13	1	0	0	8	12	0-2	1-1
3B	Kailey McCasland	5-6	Fr.	23-18	11-48	.229	.315	.313	7	4	1	0	1	7	15	0-0	1-1
LF	Ashley Langoni	5-6	Sr.	42-42	33-101	.327	.500	.604	31	37	8	1	6	26	61	3-0	5-6
LF	Tammy Vermeulen	5-7	Fr.	12-1	2-4	.500	.667	.500	3	2	0	0	0	3	2	0-0	2-2
CF	A.J. Andrews	5-4	Fr.	32-27	22-78	.282	.378	.308	13	12	0	1	0	8	24	0-1	10-12
CF	Simone Heyward	5-0	So.	22-14	6-33	.182	.370	.182	8	9	0	0	0	3	6	2-1	5-5
RF	Ashley Applegate	5-5	Sr.	41-41	26-114	.228	.328	.289	15	15	5	1	0	5	33	0-2	4-4
RF	Alex Boulet	5-0	So.	20-1	0-7	.000	.000	.000	5	0	0	0	0	0	0	0-0	5-6
DP	Jacee Blades	5-6	Jr.	30-19	16-61	.262	.328	.279	9	4	1	0	0	2	17	0-3	3-6
DP	Cassie Trosclair	5-4	Sr.	15-8	4-24	.167	.231	.208	2	1	1	0	0	4	5	0-1	2-3
-	Katie Guillory	5-7	Sr.	-	-	-	-	-	-	-	-	-	-	-	-	-	-

IN THE CIRCLE

POS	NAME	HT	CL.	APP-GS	W-L	ERA	CG	SHO	SV	IP	H	R	ER	BB	SO	WP-HP	OP BA
P	Rachele Fico	5-7	Jr.	22-20	14-6	1.07	15	9/1	1	131.0	92	32	20	45	129	5-9	.192
P	Brittany Mack	5-10	Sr.	22-19	12-7	2.46	14	3/2	1	113.2	108	45	40	38	127	5-16	.239
P	Meghan Patterson	5-7	So.	8-3	3-0	2.01	3	2/3	0	31.1	17	9	9	10	37	4-2	.159

2012 ROSTER

NO.	NAME	POS	HT.	B-T	CL.-EXP	HOMETOWN [PREVIOUS SCHOOL]
00	Ashley Langoni	OF	5-6	R-R	Sr.-3L	Pueblo, Colo. (Pueblo West HS)
1	Rikki Alcaraz	INF	5-2	L-R	Fr.-HS	Orland Park, Ill. (Marist HS)
2	Juliana Santos	INF	5-5	R-R	Sr.-3L	Newman, Calif. (Orestimba HS)
3	Cassie Trosclair	INF	5-4	L-R	Sr.-1L	New Orleans, La. (Auburn)
4	Morgan Russell	C	5-7	R-R	Sr.-3L	Edmond, Okla. (Santa Fe HS)
6	A.J. Andrews	OF	5-4	L-R	Fr.-HS	Oldsmar, Fla. (Countryside HS)
9	Alex Boulet	OF	5-0	L-L	So.-1L	Crowley, La. (Notre Dame HS)
10	Ashley Applegate	OF	5-5	L-R	R Sr.-3L	Modesto, Calif. (Fred C. Beyer HS)
11	Dylan Supak	UTL	5-10	R-R	Fr.-HS	LaGrange, Texas (LaGrange HS)
12	Heidi Pizer	INF	5-10	R-R	Sr.-2L	Tigard, Ore. (Louisiana-Lafayette)
13	Katie Guillory	OF	5-6	L-L	Sr.-3L	Lafayette, La. (Carencro HS)
16	Lauren Houston	C	5-5	R-R	Jr.-2L	Youngsville, La. (St. Thomas More Catholic HS)
18	Tammy Wray	INF	5-7	R-R	So.-1L	Somers, N.Y. (Somers HS)
20	Meghan Patterson	P	5-7	R-R	So.-1L	Destrehan, La. (Mount Carmel Academy)
23	Jacee Blades	UTL	5-6	L-R	So.-1L	Baton Rouge, La. (Parkview Baptist HS)
25	Simone Heyward	OF	5-0	L-R	So.-1L	Sacramento, Calif. (Rosemont HS)
28	Tammy Vermeulen	OF	5-7	L-R	Fr.-HS	Patchogue, N.Y. (Bayport Blue Point HS)
32	Allison Falcon	INF	5-4	R-R	R So.-1L	Donaldsonville, La. (Ascension Catholic HS)
33	Kailey McCasland	UTL	5-6	R-R	Fr.-HS	San Clemente, Calif. (San Clemente HS)
37	Rachele Fico	P	5-7	R-R	Jr.-2L	Oxford, Conn. (Masuk HS)
44	Brittany Mack	P	5-10	R-R	Sr.-3L	Round Rock, Texas (Westwood HS)
47	Ashleigh Kuhn	UTL	5-7	R-R	So.-TR	Nederland, Texas (Northwestern State)

COACHING STAFF

Head Coach: Beth Torina [Florida, 2000]	Assistant Coach: Lindsay Leftwich [Northwestern State, 2005]
Assistant Coach: Howard Dobson [McNeese State, 1997]	Director of Operations: Quinlan Duhon [LSU, 2008]

PRONUNCIATION GUIDE

Rikki ALCARAZ	awl-KUHL-raz	Ashley KUHN	koon
Alex BOULET	BOO-lay	Heidi PIZER	PIE-zer
Rachele FICO	FEE-co	Dylan SUPAK	SHOO-pak
Katie GUILLORY	Gill-or-ree	Tammy VERMEULEN	VUR-mill-yuhn
JACEE Blades	Jay-CEE		

COACHING STAFF

Beth TORINA	tohr-REE-na	Quinlan DUHON	do-YAWN
-------------	-------------	---------------	---------

STREAKS, STORYLINES & SIDEBARS

- LSU has posted a 26-9 mark dating back to Feb. 19 highlighted by season's best 12-game winning streak [March 16-April 4]. The Tigers also have posted a pair of six-game runs [Feb. 19-26 and March 7-14] during the stretch.
- LSU will carry a 29-13 overall record and 11-6 SEC mark into its mid-week meetings with McNeese State and No. 22 Florida State.
- A complete series history and player career stats against the Lady Lions and Seminoles can be seen at the bottom of the page.
- LSU currently holds sole possession of second place in the SEC Western Division standings and is currently four games behind Alabama in the loss column.
- Last time out, LSU was swept at No. 10 Tennessee and dropped to fourth place in the overall SEC race.
- Two weekends ago, LSU became only the second team during the 2012 season to defeat No. 2 Alabama. The victory halted a 13-game winning streak by the home team in the LSU-Alabama rivalry and marked the Tigers first win in Tuscaloosa since 2006.
- The Tigers used a solid effort in all three phases of the game during a 3-2 triumph in-front of a then Rhoads Stadium record crowd of 3,521 fans. Ashley Langoni provided a two-run home run in the first inning, Rachele Fico notched nine strikeouts for a complete game in the circle and Tammy Wray recorded the game's final out firing a strike to Allison Falcon on a chopping bunt attempt to get the speedy Kayla Braud by a step.
- Three weeks ago when LSU notched a sweep of South Carolina [March 23-25], it marked the fourth straight season that LSU has

- posted a weekend shutout of an SEC opponent: South Carolina [2009, 2010, 2012] and Ole Miss [2011].
- 11 of LSU's 13 losses have come against ranked opponents which include No. 15 Michigan [Feb. 11], No. 3 California [Feb. 19], No. 8 Oklahoma [March 2 & 3], No. 23 Oklahoma State [March 4, No. 20 Auburn [March 14], No. 2 Alabama [April 6 & 8] and No. 10 Tennessee [April 13-15]. DePaul [Feb. 18] is receiving votes in both editions of the Top 25 polls.
- As a team, LSU is hitting .296 during its 29 wins compared to a .140 ratio in its 13 losses.
- In those 29 wins, LSU has outscored their opponents by a 159-29 margin sparked by 17 shutouts. The Tigers have come away with wins in 13 of their last 18 outings with six shutouts since the Mississippi State opener [March 16].
- A.J. Andrews and Jacee Blades have batted 1-2 in the lineup during 11 of LSU's last 14 games [March 23-April 15]. The duo has combined to score 11 runs.
- Andrews has garnered hits in 12 of her last 20 outings [March 9-April 15] highlighted by six multi-hit performances. 18 of Andrews' 22 hits have come during the stretch, and she contributed a .282 hitting clip.
- Andrews has recorded nine of her team-leading 10 stolen bases and scored 10 of her 13 runs during the stretch.
- Andrews has produced seven of her eight RBIs during SEC play which include a two-out, RBI single during the Tennessee series finale [April 15] that placed the Tigers ahead 2-0.

SERIES HISTORY

AT A GLANCE [MCNEESE STATE]

Overall	LSU leads 23-2
Home	LSU leads 16-1
Away	LSU leads 6-1
Streak	W-5

GAME-BY-GAME

Date	Result	Location
03/12/97	W, 8-1	Baton Rouge
03/12/97	W, 2-0	Baton Rouge
02/14/98	W, 7-4	Baton Rouge
02/13/99	W, 7-0	Baton Rouge
02/14/99	W, 4-1	Baton Rouge
03/24/99	W, 4-3	Baton Rouge
03/24/99	W, 6-1	Baton Rouge
02/12/00	W, 3-0	Baton Rouge
02/13/00	W, 5-0	Baton Rouge
02/14/01	W, 3-1	Lake Charles
02/14/01	W, 4-0	Lake Charles
02/22/05	W, 11-1	Baton Rouge
03/15/06	W, 3-1	Lake Charles
04/12/06	W, 1-0	Baton Rouge
03/07/07	W, 7-1	Baton Rouge
03/28/07	W, 6-0	Lake Charles
02/11/09	W, 6-0	Baton Rouge
04/22/09	L, 4-3	Lake Charles
03/31/10	W, 7-2	Lake Charles
04/21/10	L, 3-0	Baton Rouge
05/21/10	W, 6-0	Baton Rouge
02/23/11	W, 7-1	Baton Rouge
04/13/11	W, 4-2	Lake Charles
02/25/12	W, 2-0	Baton Rouge
03/28/12	W, 4-0	Lake Charles

OFFENSE

Player	AVG	H-AB	R	HR	RBI	BB	SB-ATT
Kuhn	1.000	1-1	0	0	0	0	0-0
Blades	.667	4-6	1	0	1	1	0-0
Falcon	.667	2-3	2	0	0	2	1-1
Heyward	.429	3-7	2	0	0	2	2-2
Alcaraz	.333	1-3	1	0	0	0	0-0
Trosclair	.300	3-10	1	0	0	1	1-1
Supak	.250	1-4	0	0	0	0	0-0
Russell	.211	4-19	2	1	5	0	0-0
Applegate	.188	3-16	4	0	0	3	0-0
Houston	.167	1-6	1	0	1	1	1-1
Wray	.154	2-13	1	0	1	1	0-0
Santos	.115	3-26	3	1	4	0	2-2
Langoni	.071	2-28	1	0	3	4	2-2
Pizer	.000	0-5	0	0	0	0	0-0
Andrews	.000	0-3	0	0	0	0	0-0
McCasland	.000	0-1	0	0	0	0	0-0
Boulet	.000	0-0	1	0	0	0	1-1

PITCHING

Player	W-L	ERA	IP	H	R	ER	BB	SO	AVG
Fico	3-0	0.56	25.0	13	2	2	6	22	.155
Mack	2-1	1.31	16.0	9	3	3	6	18	.158
Patterson	0-0	2.33	3.0	4	1	1	2	5	.308

AT A GLANCE [FLORIDA STATE]

Overall	LSU leads 2-1
Away	Florida State leads 1-0
Neutral	LSU leads 2-0
Streak	W-2

GAME-BY-GAME

Date	Result	Location
03/13/98	L, 4-2	Tallahassee
02/29/04	W, 4-3	Columbus, Ga.
05/30/04	W, 2-1	Oklahoma City, Okla.

SEC STANDINGS

Western Division

TEAM	SEC	PCT.	OVERALL	PCT.
Alabama	17-2	.895	40-2	.952
LSU	11-6	.642	29-13	.690
Mississippi State	8-14	.364	25-19	.568
Auburn	5-14	.263	26-18	.591
Arkansas	4-15	.211	22-19	.537
Ole Miss	3-14	.176	16-24	.400

Eastern Division

TEAM	SEC	PCT.	OVERALL	PCT.
Florida	18-2	.900	38-5	.884
Georgia	12-7	.632	35-9	.795
Tennessee	16-6	.727	35-9	.795
Kentucky	8-9	.471	21-23	.478
South Carolina	3-16	.158	23-23	.500

THIS WEEK IN THE SEC • ALL TIMES ARE CENTRAL

Tuesday, April 17

Memphis at No. 8 Tennessee [DH]	3 p.m.
Missouri-Kansas City at Arkansas	5 p.m.
McNeese State at LSU	6 p.m.
Georgia State at No. 2 Alabama	6 p.m.
Mississippi State at Southern Miss	6 p.m.

Wednesday, April 18

Kentucky at Ole Miss [DH]	4 p.m.
Georgia Tech at No. 12 Georgia	5:30 p.m.
No. 22 Florida State at No. 23 LSU	6 p.m.

Thursday, April 19

No. 2 Alabama at No. 12 Georgia [TV: ESPN2]	7 p.m.
---	--------

Friday, April 20

Florida International at No. 3 Florida [DH]	3 p.m.
Kentucky at Mississippi State	5 p.m.
No. 2 Alabama at No. 12 Georgia	5:30 p.m.
Ole Miss at No. 23 LSU [TV: CST]	6 p.m.
No. 8 Tennessee at South Carolina	6 p.m.
Arkansas at Auburn	6 p.m.

Saturday, April 21

Florida International at No. 3 Florida [DH]	12 p.m.
Kentucky at Mississippi State [TV: ESPN2]	12 p.m.
Arkansas at Auburn	1 p.m.
No. 2 Alabama at No. 12 Georgia	1:30 p.m.
No. 11 Tennessee at South Carolina	3 p.m.
Ole Miss at No. 23 LSU [TV: CST]	6 p.m.

Sunday, April 22

No. 8 Tennessee at South Carolina	12 p.m.
Arkansas at Auburn	12 p.m.
Ole Miss at No. 23 LSU	1 p.m.
Kentucky at Mississippi State	1 p.m.



USA TODAY/NFCA TOP 25

RANK	TEAM	RECORD	PTS	PVS
1	California [24]	39-2	744	1
2	Alabama [6]	40-2	725	2
3	Florida	38-5	675	3
4	Arizona State	36-5	662	4
5	Texas	35-5	630	5
6	Oklahoma	35-6	609	6
7	Louisiana-Lafayette	38-2	548	8
8	Tennessee	35-9	539	10
9	Washington	35-9	488	7
10	Missouri	32-8	459	9
11	Louisville	38-2	443	12
12	Georgia	34-10	415	11
13	Arizona	29-12	394	13
14	Hawai'i	35-4	385	14
15	UCLA	29-12	330	16
16	Stanford	32-12	315	15
17	South Florida	40-6	263	18
18	Oregon	29-9	243	19
19	Texas A&M	29-13	234	17
20	Michigan	30-11	176	20
21	North Carolina	32-10	126	24
22	Florida State	37-10	116	21
23	LSU	29-13	62	22
24	Texas Tech	34-10	48	NR
25	Baylor	26-14	42	23

Dropped Out: No. 25 Oregon State

RV: Georgia Tech 24, Tulsa 18, Oregon State 13, Syracuse 10, Kentucky 5 and Northern Iowa 5.

Bold - 2012 Opponent; [] First Place Votes; [RV] Receiving Votes

ESPN.COM/USA SOFTBALL TOP 25

RANK	TEAM	RECORD	PTS	PVS
1	California [15]	39-2	495	1
2	Alabama [5]	40-2	485	2
3	Arizona State	36-5	452	3
4	Florida	38-5	431	4
5	Oklahoma	35-6	419	6
6	Texas	35-5	394	5
7	Tennessee	35-9	380	10
8	Louisiana-Lafayette	38-2	365	7
9	Louisville	38-2	312	12
10	Missouri	32-8	309	9
11	Washington	35-9	298	8
12	Arizona	29-12	288	13
13	Georgia	34-10	255	11
14	Oregon	29-9	233	15
15	UCLA	29-12	216	17
16	Texas A&M	29-13	200	14
17	South Florida	40-6	186	16
18	Hawai'i	35-4	170	19
19	Stanford	32-12	167	18
20	Michigan	30-11	121	20
21	North Carolina	32-10	86	24
22	Florida State	37-10	55	22
23	LSU	29-13	43	21
24	Oregon State	27-14	38	23
25	Texas Tech	34-9	27	-

Dropped Out: Baylor [25]

RV: Syracuse 25; Baylor 16; Tulsa 13; Georgia Tech 9; DePaul 8; Fresno State 1; Kentucky 1; UAB 1 and Virginia Tech 1

Bold - 2012 Opponent; [] First Place Votes; [RV] Receiving Votes

- Jacee Blades has registered hits in 10 of her last 17 outings since being inserted into the starting lineup for the Mississippi State opener [March 16]. She has garnered 11 of those 17 starts at the designated player position [March 20-April 15].
- Blades has pieced together a pair of three-game hitting streaks [March 20-24 and March 28-31]. She registered hits in two of three games in four of LSU's five SEC weekend series.
- Blades deposited a two-run double down the right field line during the second inning of the series opener, a 5-0 win, over the Gamecocks [March 23].
- Ashley Langoni has contributed six of LSU's 12 home runs, banged home a team-leading 26 RBIs on the season and won LSWA Hitter of the Week [March 15].
- Langoni has vaulted her way up the LSU record book in multiple categories. After blasting a two-run homer in game two at No. 2 Alabama [April 7], Langoni sits alone in fifth place on the program's all-time homers list with 29 career dingers.
- Langoni also worked her way into the No. 8 position on the career RBIs rankings. She enters this week's action one away from matching Quinlan Duhon [2005-08] with 128 career RBIs.
- Langoni has produced hits in nine of her last 13 outings [March 24-April 15] fueled by a trio of multi-hit efforts. She had a season's best four-game hitting streak end [March 30-April 4].
- Langoni has drawn a team-leading 37 walks, including 23 free passes in her last 20 outings [March 14-April 15]. Her 37 walks also are tied for second place in the SEC rankings.
- Langoni became the third player in program history to surpass 100 career walks during the Alabama opener [April 6]. She is one free pass away from matching former All-American Ashlee Ducote's single season mark set in 2000.
- Langoni has crossed the plate a team-high 31 times and matched her own program single-game record with four runs scored during the South Carolina finale [March 25].
- Juliana Santos and Allison Falcon not only returned to the heart of the lineup but the middle of the infield during the South Carolina series [March 23-25].
- LSU's defense has registered an errorless game in nine of its last 13 outings starting with the South Carolina opener [March 23]. It ended a stretch of seven straight games with an error where the Tigers committed 14 miscues.
- Santos has notched hits in 22 of her 35 appearances, including 14 of her last 21 outings [March 3-14, March 23-April 15]. She missed a four-game stretch [March 16-20] due to injury.
- Santos has recorded 29 hits to rank second on the team. She also has chipped in 19 RBIs and registered a season-best three RBIs sparked by a two-run dinger at South Carolina [March 25].
- Santos has already garnered three four-game hitting streaks [Feb. 11-18], [March 9-14] & [March 30-April 4] and a pair of three-game runs [Feb. 19-25] & [March 3-4].
- With two outs and the score tied at 1-1 during the fifth inning versus Nicholls State [April 4], Santos ripped the go-ahead RBI single

HONORS & AWARDS

RIKKI ALCARAZ

- Tiger Invitational All-Tournament Team [02/26]

ASHLEY APPEGATE

- LSU's nominee for SEC's Brad Davis Community Service Post-Graduate Scholarship [03/28]

ALLISON FALCON

- Purple & Gold Challenge All-Tournament Team [03/11]

RACHELE FICO

- USA Softball Player of the Year Top 25 Finalist [04/11]
- LSWA Pitcher of the Week [02/15, 02/29, 04/04, 04/10]
- Purple & Gold Challenge All-Tournament Team [03/11]
- Tiger Invitational All-Tournament Team [02/26]
- Tiger Classic All-Tournament Team [02/12]

ASHLEIGH KUHN

- Purple & Gold Challenge All-Tournament Team [03/11]

ASHLEY LANGONI

- LSWA Hitter of the Week [03/15]
- Purple & Gold Challenge All-Tournament Team [03/11]

BRITTANY MACK

- LSU's nominee for SEC's H. Boyd McWhorter Scholar-Athlete Post-Graduate Scholarship [03/28]
- SEC Co-Pitcher of the Week [03/26]
- LSWA Pitcher of the Week [03/28]
- LOWE'S Senior Class Finalist [02/15]

MEGHAN PATTERSON

- Purple & Gold Challenge All-Tournament Team [03/11]
- Tiger Invitational All-Tournament Team [02/26]

MORGAN RUSSELL

- Tiger Invitational All-Tournament Team [02/26]

DYLAN SUPAK

- Purple & Gold Challenge All-Tournament Team [03/11]
- Tiger Invitational All-Tournament Team [02/26]

to open up a five-run frame.

- Falcon has found herself in five different spots in the batting order after starting the season at the bottom of the lineup, most recently 13 straight appearances in the No. 5 position [March 23-April 15]. She did not play versus Nicholls State [April 4].

TIGERS IN THE POLLS

USA TODAY/NFCA TOP 25

Preseason	No. 22 [119]
Feb. 14	No. 25 [47]
Feb. 21	RV [10]
Feb. 28	RV [15]
March 6	RV [1]
March 13	NR
March 20	RV [7]
March 27	RV [30]
April 3	No. 24 [82]
April 10	No. 22 [106]
April 17	No. 23 [62]
April 24	
May 1	
May 8	
May 15	

ESPN.COM/USA SOFTBALL TOP 25

Preseason	No. 20 [106]
Feb. 14	RV [26]
Feb. 21	NR
Feb. 28	RV [9]
March 6	NR
March 13	NR
March 20	RV [11]
March 27	No. 23 [43]
April 3	No. 21 [101]
April 10	No. 21 [112]
April 17	No. 23 [43]
April 24	
May 1	
May 8	
May 15	

CAREER RECORD WATCH • HITTING

RUNS SCORED

11	116	Lauren Castle	2004-06
12	106	Quinlan Duhon	2005-08
13	103	Ashley Langoni	2009-Current
14	100	April Janzen	1998-99, 2001-02
14	100	LaDonia Hughes	2003-04
16	98	Sara Fitzgerald	2001-04
17	96	Juliana Santos	2009-Current

HITS

19	169	Kirsten Shortridge	2009-10
20	151	Ashley Langoni	2009-2012
21	145	Lauren Delahoussaye	2003-06
22	144	Shaunte' Fremin	1997-2000
23	142	LaDonia Hughes	2003-04
24	138	Sara Fitzgerald	2001-04
25	135	Juliana Santos	2009-Current
26	134	Jodi Otten	1997-98
27	129	Ashley Applegate	2008-Current

HOME RUNS

1	33	Rachel Mitchell	2007-10
2	32	Leslie Klein	2004-07
3	31	Julie Wiese	2001-04
4	30	Quinlan Duhon	2005-08
5	29	Ashley Langoni	2009-Current

RUNS BATTED IN

5	144	Trena Peel	1999-2002
6	137	Stephanie Hastings	1998-2001
7	128	Quinlan Duhon	2005-08
8	127	Ashley Langoni	2009-Current

MULTI-RBI GAMES

3	42	Tara Asbill	1997-2000
4	39	Ashlee Ducote	1997-2000
5	35	Christy Conner	2001-03
5	35	Ashley Langoni	2009-Current

TOTAL BASES

11	300	Quinlan Duhon	2005-08
12	285	Killian Roessner	2005-08
13	279	Lauren Castle	2004-06
14	274	Christy Conner	2001-03
15	272	Ashley Langoni	2009-Current

WALKS

1	121	Rachel Mitchell	2007-10
2	115	Julie Wiese	2001-04
3	104	Ashley Langoni	2009-Current
4	98	Camille Harris	2003-06
5	77	Ashlee Ducote	1997-2000
6	75	Leslie Klein	2004-07
7	72	Trena Peel	1999-2002
8	68	Quinlan Duhon	2005-08
8	68	Ashley Applegate	2008-Current

SACRIFICE HITS

7	19	Auburne Ziober	1998-2001
7	19	Aleshia Perry	2001-02
9	18	Camille Harris	2003-06
9	18	Jazz Jackson	2007-09
11	17	Shaunte' Fremin	1997-2000
11	17	Morgan Russell	2009-Current

- Falcon missed an eight-game stretch [Feb. 25-March 4] due to injury. She has tallied a .310 batting average and notched 17 RBIs to rank third on the team.
- Falcon recently produced a career-long six-game hitting streak [March 28-April 7]. She ripped a RBI single in the third inning of LSU's 3-2 win over No. 2 Alabama [April 7] which proved to be the game-winning hit.
- Falcon blasted a solo home run during the second inning of the Tennessee series finale [April 15] to give LSU a 1-0 edge.
- For the season, Falcon is tied with Andrews with six multi-hit performances on the team.
- After battling an injury and appearing in only three games in 2011, Ashley Applegate has started 41 of 42 games this season with 37 of those starts coming in right field.
- Applegate has recorded hits in her nine of her last 13 games [March 25-April 15]. She recently equaled a career-long six-game hitting streak [March 25-April 4] being used in the lineup's No. 6 spot.
- Applegate cranked a two-run single during the sixth inning to vault to a 3-2 comeback victory in the Arkansas finale [April 1].
- In her 21 starts at catcher, Lauren Houston has reached base in 14 of those games. She has compiled a .466 on-base percentage being hit-by-a-pitch on 13 occasions, which is second-best in the SEC rankings.
- Houston has scored a run during three of her last six appearances [March 25-April 15]. She turned in a 2-for-3 performance with a pair of singles which led to LSU scoring runs during a 4-0 win over Mississippi State [March 18].
- Tammy Wray has started her sophomore season going 11-for-76 at the plate. She knocked a RBI single in the seventh inning to spark LSU's comeback attempt which fell short 4-2 at No. 10 Tennessee [April 14].
- Dylan Supak has produced hits in 11 of her 25 starts on the season, but has tallied a 4-for-30 clip during her last 13 games since SEC action began [March 14-April 8].
- Supak delivered a two-run single which proved to be the game-winner during LSU's eight-run third inning versus Mississippi State [March 16].
- Supak's five-RBI performances are third on the team only behind Langoni and Santos. She is tied for fourth on the squad with 11 total RBIs.
- Simone Heyward has already found herself in four different positions in the batting order on the young season.
- After missing a 15-game stretch due to injury [March 2-21], Heyward has returned to action by making seven appearances as a pinch hitter [March 23-April 8] and her first start in centerfield versus Nicholls State [April 4].
- Heyward drew a leadoff walk and scored the game-winning run in LSU's 1-0 walk-off win over Arkansas [March 30]. She has scored eight times in 2012, and LSU is 30-4 over the last two seasons when she crosses the plate.
- Off the bench, Alex Boulet has scored during four of her last seven pinch running appearances [March 18-April 15]. She stole home to tie the game at 1-1 in the fourth inning versus Georgia Tech [March 20].
- Rikki Alcaraz has scored runs and drawn a quartet of walks in her last three outings as the starting second baseman [March 18-20, April 4]. She ignited LSU's five-run fifth inning versus Nicholls State [April 4] with a leadoff double.
- Earlier this season, Alcaraz put together a five-game hitting streak [Feb. 21-26] and claimed Tiger Invitational All-Tournament honors.
- Jacee Blades, Ashleigh Kuhn and Heidi Pizer have registered a combined 8-for-10 clip as pinch hitters. The rest of the LSU team has garnered a 1-for-25 mark.
- Kuhn has driven home nine of her 11 RBIs during her last 11 outings [March 7-28, April 4-15]. She has tallied a 2-for-18 clip at the plate in SEC action.
- As a pinch hitter, Kuhn ripped a walk-off RBI single during LSU's 1-0 win over Troy [March 9]. She ripped a two-run double as part of LSU's five-run, fifth inning versus Nicholls State [April 4]
- Kailey McCasland has made 11 starts at third base and seven starts at designated player on the season. She ended a 0-for-14 stretch

CAREER RECORD WATCH • PITCHING

WINS

3	84	Emily Turner	2004-07
4	68	Ashley Lewis	1999-2001
5	59	Dani Hofer	2006-2009
6	52	Brittany Mack	2009-Current
7	48	Rachele Fico	2010-Current

STRIKEOUTS

4	623	Dani Hofer	2006-2009
5	527	Brittany Mack	2009-Current
6	474	Cody Trahan	2007-10
7	473	Rachele Fico	2010-Current

STRIKEOUTS PER 7 IP

1	9.82	Britni Sneed	1999-2002
2	9.19	Dani Hofer	2006-2009
3	8.12	Kristin Schmidt	2002-2004
4	7.52	Brittany Mack	2009-Current
5	7.39	Rachele Fico	2010-Current

SHUTOUTS

4	20	Dani Hofer	2006-2009
5	18	Rachele Fico	2010-Current
6	16	Ashley Lewis	1999-2001
7	15	Brandi Landry	1997-1998
7	15	Cody Trahan	2007-10
8	13	Brittany Mack	2009-Current

SAVES

1	12	Britni Sneed	1999-2002
2	8	Rachele Fico	2010-Current
3	7	Kristin Schmidt	2002-04
4	4	Sarah KnifeChief	1997-98
4	4	Emily Turner	2004-07
4	4	Dani Hofer	2006-09
7	3	Casey Faile	2008-10
7	3	Brittany Mack	2009-12

- [March 10-28] with two hits against Nicholls State [April 4] and a pinch-hit single at No. 10 Tennessee [April 14].
- McCasland belted her first career home run, scored two runs and claimed three RBIs during LSU's 7-4 win over then No. 23 Oklahoma State [Feb. 23].
- Morgan Russell has produced hits in three of her last five starts [April 4-15], including a RBI single to cap LSU's five-run fifth inning versus Nicholls State [April 4]. Her 17 career sacrifice hits are tied for 11th in program history.
- Defensively, Russell has put a close to a pair of impressive stolen base streaks in SEC play. She ended Alabama's Jennifer Fenton NCAA-record 74-base run [April 7] and stopped Tennessee's Raven Chavanne streak of 40 consecutive steals [April 15].
- Russell contributed both of LSU's RBIs highlighted by a sixth-inning solo home run during a 2-0 win over McNeese State [Feb. 25].
- Cassie Trosclair made her season debut at the Tiger Invitational. In her first game, she ripped a RBI-double which proved to be the game-winning run in a 5-4 win over South Alabama [Feb. 25].
- Trosclair deposited a two-out, two-run single during LSU's 7-4 win over then No. 23 Oklahoma State [March 3]. She scored as a pinch runner [March 24] and added a RBI infield single [March 25] during the South Carolina series.
- In the circle, Rachele Fico is 14-6 with a blistering 1.07 ERA which ranks third in the SEC in addition to eighth-lowest nationally. The four-time Louisiana Pitcher of the Week has received only three runs of support during her six setbacks.
- For the season, Fico has been touched up for just 20 earned runs in 131.0 innings of work. She tossed four straight SEC shutouts [March 18-30] highlighted by a season's best 11 Ks in a three-hit

LSU MULTI-HIT GAMES

PLAYER	2	3	4+	SEASON	CAREER
Ashley Langoni	9	1	-	10	35
Juliana Santos	3	2	-	5	28
Ashley Applegate	3	-	-	3	26
Simone Heyward	1	-	-	1	12
Morgan Russell	2	-	-	2	10
Allison Falcon	5	1	-	6	9
Lauren Houston	2	-	-	2	9
Jacee Blades	2	-	-	2	8
Cassie Trosclair	-	-	-	0	8
Tammy Wray	1	-	-	1	8
A.J. Andrews	6	-	-	6	6
Dylan Supak	5	-	-	5	5
Ashleigh Kuhn	3	-	-	3	3
Kailey McCasland	3	-	-	3	3
Heidi Pizer	-	-	-	0	2
Rikki Alcaraz	1	-	-	1	1
Alex Boulet	-	-	-	0	1

LSU MULTI-RBI GAMES

PLAYER	2	3	4+	SEASON	CAREER
Ashley Langoni	4	4	-	8	35
Juliana Santos	6	1	-	7	22
Ashley Applegate	1	-	-	1	13
Morgan Russell	2	-	-	2	10
Tammy Wray	1	-	-	1	8
Allison Falcon	3	-	-	3	6
Lauren Houston	1	-	-	1	5
Heidi Pizer	1	-	-	1	5
Dylan Supak	5	-	-	5	5
Ashleigh Kuhn	2	-	1	3	3
A.J. Andrews	1	1	-	2	2
Cassie Trosclair	1	-	-	1	2
Rikki Alcaraz	1	-	-	1	1
Jacee Blades	1	-	-	1	1
Kailey McCasland	-	1	-	1	1
Tammy Vermuelen	1	-	-	1	1

LSU HITTING STREAKS

PLAYER	SEASON	CURRENT	CAREER
Jacee Blades	3	-	7
Ashley Langoni	4	1	7
Ashley Applegate	6	1	6
Allison Falcon	6	1	6
Juliana Santos	4	1	6
Tammy Wray	3	-	6
Rikki Alcaraz	5	2	5
Simone Heyward	3	-	5
Morgan Russell	2	2	5
Heidi Pizer	4	-	4
Lauren Houston	2	-	3
Ashleigh Kuhn	3	-	3
Kailey McCasland	3	-	3
Dylan Supak	3	-	3
A.J. Andrews	2	1	2
Alex Boulet	-	-	2
Katie Guillory	-	-	2
Cassie Trosclair	1	-	2
Tammy Vermeulen	2	2	2

shutout of Arkansas [March 30].

- Fico has already tossed nine overall shutouts to rank in a eighth-place tie nationally. She has fired a quartet of one-hitters against Louisiana Tech [Feb. 12], Utah State [Feb. 19], McNeese State [Feb. 25] and Troy [March 10].
- For her career, Fico has totaled 18 shutouts to rank fifth in program history. She is two shutouts away from Dani Hofer [2006-09] for the No. 4 spot.
- Fico became only the second pitcher during the 2012 season to defeat No. 2 Alabama [April 7]. She accomplished the impressive feat on the biggest of stages in-front of a then Rhoads Stadium record crowd of 3,521 spectators.
- Fico finished the game in-style by recording six of her nine strikeouts and retiring nine of the final 11 batters she faced over the final three innings.
- Fico's sparkling pitching performance ended a 13-game winning streak by the home team in the series and gave LSU its first win in Tuscaloosa dating back to the 2006 season.
- Fico had an impressive run of seven straight victories [March 16-April 8] come to a close at No. 10 Tennessee [April 14].
- Fico has limited opponents to a .192 hitting clip and notched 129 strikeouts to rank sixth and seventh, respectively, in those categories among the SEC leaders.
- Fico's 473 career strikeouts places her seventh on LSU's all-time list. The junior right-hander is two Ks away from passing Cody Trahan [2008-2011] for the No. 6 position.
- Brittany Mack is 12-7 with a 2.46 ERA and recently had her stretch of nine consecutive wins [March 3-April 1] come to a close during the series opener at No. 2 Alabama [April 6].

- During the nine-game run, Mack carried a no-hitter one out into the seventh inning at South Carolina [March 24]. In the process, she became the fifth pitcher in LSU history to eclipse 500 career strikeouts and reach the 50-win plateau. The senior right-hander picked up SEC Co-Pitcher of the Week [March 26] for her efforts.
- Mack was selected as the No. 1 pick during the National Pro Fast-pitch's Collegiate Draft [March 7]. It marks the third straight year the SEC has had the No. 1 pick in the NPF Draft.
- Against Mississippi State [March 16-17], Mack recorded two strikeouts in a relief appearance during the series opener to earn her first save of the season. The senior right-hander followed that up with a 10-strikeout performance in game two.
- Meghan Patterson is 3-0 and has racked up 37 strikeouts in her 31.1 innings of work, including a career-best 13 Ks against Alcorn State [Feb. 26].
- Patterson has been touched up for one run on 11 hits in her last 25 frames of action [Feb. 26-April 4]. She made her SEC season debut at South Carolina [March 25].
- Patterson went the distance and notched five strikeouts during her last start against Nicholls State [April 4].

RPI REPORT • NATIONAL RANKINGS

Overall Ranking	20
Record vs. RPI 1-25	3-11
Home	2-2
Away	1-6
Neutral	0-3
Record vs. RPI 26-50	6-1
Home	5-0
Away	0-1
Neutral	1-0
Record vs. RPI 51-100	11-1
Home	8-1
Away	3-0
Neutral	0-0
Record vs. RPI 101-150	2-0
Home	2-0
Away	0-0
Neutral	0-0
Record vs. RPI 151 +	7-0
Home	4-0
Away	1-0
Neutral	2-0

NON-CONFERENCE	RANK [RECORD]
California	1 [0-1]
Oklahoma	7 [0-2]
Florida State	18 [0-0]
DePaul	21 [0-1]
Michigan	24 [0-1]
Georgia Tech	25 [1-0]
Oklahoma State	39 [1-1]
South Alabama	42 [2-0]
Troy	55 [2-0]
McNeese State	76 [2-0]
Penn State	93 [1-1]
Mississippi Valley State	148 [2-0]
Louisiana Tech	158 [1-0]
Utah State	169 [1-0]
Cal State Northridge	174 [1-0]
Nicholls State	237 [2-0]
Southeastern Louisiana	252 [1-0]
Alcorn State	284 [1-0]

OPPONENT RPI SEC	AS OF 04/09/12 RANK [RECORD]
Alabama	2 [1-2]
Tennessee	3 [0-3]
Florida	6 [0-0]
Georgia	17 [0-0]
LSU	20
Auburn	29 [1-1]
Mississippi State	31 [3-0]
Kentucky	38 [0-0]
Arkansas	58 [3-0]
South Carolina	77 [3-0]
Ole Miss	96 [0-0]

TOP 100 NCAA TEAM RANKINGS	AS OF 04/09/12 RANK
ERA [1.75]	13th
W-L Percentage [.690]	38th
Stolen Bases Per Game [1.21]	72nd

TOP 100 NCAA PLAYER RANKINGS	THUR GAMES 04/01/12	PLAYER	RANK
ERA [1.07]		Rachele Fico	8th
Shutouts [9]		Rachele Fico	T-8th
Walks Per Game [0.88]		Ashley Langoni	9th
Strikeouts Per 7 IP [7.80]		Brittany Mack	50th
Wins [14]		Rachele Fico	73rd
Strikeouts Per 7 IP [6.90]		Rachele Fico	89th

THE LAST TIME A TIGER ...

Scored three runs in a game:	Ashley Langoni vs. No. 5 Florida, 05/14/10
Scored four runs in a game:	Ashley Langoni at South Carolina, 03/25/12
Had four hits in a game:	Juliana Santos vs. Louisiana Tech, 02/13/11
Had five hits in a game:	Juliana Santos at Arkansas, 04/02/11
Had five RBIs in a game:	Ashley Langoni at Arkansas, 04/01/11
Had six RBIs in a game:	Vanessa Soto vs. Centenary, 02/10/07
Had seven RBIs in a game:	Stephanie Hill vs. Nicholls State, 04/01/04
Had two doubles in a game:	Dylan Supak at South Carolina, 03/23/12
Had three doubles in a game:	Tessa Lynam vs. Jackson State, 02/28/03
Had two triples in a game:	Leslie Klein vs. Alcorn State, 02/20/04
Had two home runs in a game:	Anissa Young vs. Fordham, 02/26/10
Hit a grand slam:	Anissa Young [1st] & Ashley Langoni [2nd] at Arizona State, 05/16/09
Lead off game with home run:	Kirsten Shortridge at Hawai'i, 02/07/09
Lead off inning with home run:	Allison Falcon at No. 10 Tennessee [2nd], 04/15/12
Hit an inside-the-park home run:	Shannon Stein vs. Auburn, 05/08/08
Hit a walk-off home run to win regulation game:	Kirsten Shortridge vs. Kentucky, 05/13/10
Hit a walk-off home run to win an extra inning game:	Anissa Young vs. No. 1 Alabama [10th], 04/09/11
Had eight total bases in a game:	Ashley Langoni vs. Syracuse, 05/21/11
Had nine total bases in a game:	Kristen Hobbs vs. Missouri, 02/10/07
Had 10 total bases in a game:	Anissa Young vs. Southeastern Louisiana, 02/24/10
Had 13 total bases in a game:	Ashlee Ducote at South Carolina [Gm 2], 04/14/00
Drew three walks in a game:	Ashley Langoni at South Carolina, 03/25/12
Drew four walks in a game:	Ashley Langoni vs. Penn State, 02/11/12
Drew two intentional walks in a game:	Killian Roessner vs. Troy, 03/11/08
Drew three intentional walks in a game:	Stephanie Hill at Ole Miss [Gm 1], 04/17/04
Hit by pitch twice in a game:	Lauren Houston at McNeese State, 03/28/12
Struck out three times in a game:	Juliana Santos at No. 2 Alabama, 04/08/12
Struck out four times in a game:	Alex Boulet vs. No. 1 Alabama, 04/08/11
Struck out five times in a game:	Ashley Lewis vs. Southern Miss, 05/20/00
Had two sacrifice hits in a game:	Ashley Langoni vs. No. 1 Alabama, 04/08/11
Had three sacrifice hits in a game:	Tara Asbill at Alabama [Gm 1], 05/05/00
Had two sacrifice flies in a game:	Juliana Santos at Mississippi State, 04/28/11
Had two stolen bases in a game:	A.J. Andrews at No. 2 Alabama, 04/07/12
Had three stolen bases in a game:	Juliana Santos vs. Louisiana Tech, 02/13/11
Had four stolen bases in a game:	Cassie Trosclair vs. Sacred Heart, 05/21/11
Seven-inning complete-game shutout:	Rachele Fico vs. Arkansas, 03/30/12
Extra-inning complete-game shutout:	Rachele Fico vs. Penn State [8 IP], 02/11/12
Seven-inning complete-game one-hitter:	Brittany Mack at South Carolina, 03/24/12
Tossed a perfect game:	Rachele Fico vs. Southeastern Louisiana [5 IP], 02/16/11
Tossed a no-hitter:	Meghan Patterson vs. Southern [5 IP], 02/18/11
Seven-inning no-hitter:	Emily Turner at Arkansas [Gm 2], 04/21/07
Recorded 12 strikeouts in a game:	Brittany Mack vs. No. 6 Tennessee, 04/15/11
Recorded 13 strikeouts in a game:	Meghan Patterson vs. Alcorn State, 02/26/12
Recorded 14 strikeouts in a game:	Brittany Mack vs. No. 1 Alabama, 04/08/11
Recorded 15 strikeouts in a game:	Dani Hofer vs. Auburn, 03/21/08
Recorded 16 strikeouts in a game:	Dani Hofer vs. South Florida, 03/16/08
Recorded 17 strikeouts in a game:	Kristin Schmidt vs. Ole Miss [Gm 1], 04/18/03
Recorded 18 strikeouts in a game:	Rachele Fico vs. Syracuse, 05/20/11
Recorded 19 strikeouts in a game:	Britni Sneed vs. Oklahoma, 05/26/01
Pitched 10+ innings:	Rachele Fico vs. No. 1 Alabama, 04/11/11
Pitched 11+ innings:	Rachele Fico vs. Syracuse, 05/20/11
Pitched 13+ innings:	Brittany Mack vs. No. 1 Alabama, 04/10/11
Had 17 putouts:	Leigh Ann Danos vs. South Carolina [Gm 1], 03/13/04
Had 18 putouts:	Morgan Russell vs. Syracuse, 05/20/11
Had 19 putouts:	Jennifer Schuelke vs. Oklahoma, 05/26/01
Had six assists:	Cassie Trosclair vs. No. 18 Texas A&M, 05/22/11
Had seven assists:	Juliana Santos at Kentucky [Gm. 2], 04/25/10
Had eight assists:	Tara Asbill vs. South Carolina, 05/14/00
Had two errors:	Kailey McCasland vs. Auburn [Gm 1], 03/14/12
Had three errors:	Emily Turner at Arkansas [Gm 2], 04/26/06
Had four errors:	Andrea Smith vs. Arizona, 05/26/06

INNING-BY-INNING

SCORE BY INNINGS	1	2	3	4	5	6	7	8	9	10+	TOTALS
LSU	41	24	36	20	33	10	7	1	0	0	172
Opponents	22	12	5	8	21	20	7	0	0	1	96

THE LAST TIME LSU ...

Scored 10 or more runs:	Mississippi State [10], 03/16/12
Scored 15 or more runs:	Mississippi Valley State [16], 03/10/12
Scored 20 or more runs:	vs. Grambling State [20], 02/15/06
Allowed 10 or more runs:	at No. 10 Tennessee [10], 04/15/12
Allowed 15 or more runs:	Never
Recorded 10 or more hits:	Arkansas [11], 03/31/12
Recorded 15 or more hits:	at Southeastern Louisiana [15], 03/24/10
Recorded 20 or more hits:	vs. Alcorn State [21], 02/20/04
Allowed 10 or more hits:	at No. 10 Tennessee [13], 04/15/12
Drove home 10 or more RBIs:	Mississippi Valley State [14], 03/10/12
Hit six or more doubles:	vs. Grambling State [8], 02/15/06
Hit three or more triples:	vs. Alcorn State [3], 02/20/04
Hit four or more home runs:	vs. Fordham [4], 02/26/11
Stole eight or more bases:	at Ole Miss [8], 04/22/11
Drew 10 or more walks:	vs. Memphis [10], 02/11/07
Pitched a no-hitter:	vs. Southern, 02/18/11
Pitched 15 or more strikeouts:	vs. Syracuse [18], 05/20/11
Committed 4 or more errors:	Troy [5], 03/09/12
Defeated a ranked team:	at No. 2 Alabama [3-2], 04/07/12
Defeated a top-five ranked team:	at No. 2 Alabama [3-2], 04/07/12
Lost to an unranked opponent:	vs. DePaul [3-1], 02/18/12

2012 SEASON SERIES
LSU 2, MCNEESE STATE 0 - 02/25

BATON ROUGE - Rachele Fico fired her third one-hitter of the season, while Morgan Russell garnered a 2-for-3 performance with two RBIs as the LSU softball team extended its winning streak to four games with a 2-0 victory over McNeese State at Tiger Park.

"It definitely was a great day," head coach Beth Torina said. "We faced another quality opponent in McNeese State, so overall it was a great day. I liked how our kids played. I liked our offensive production today. I thought they looked very confident."

For Fico, she improved to 4-1 on the season. She garnered six strikeouts against one walk and her ERA dropped to 0.45 for the season.

McNeese State (9-5) put runners on the corners to open the game off of Fico as Claire Terracina knocked a leadoff triple, while Kim Kennedy was hit-by-pitch.

Fico buckled down and got three consecutive ground balls, including one to shortstop Juliana Santos. She alertly threw home to Russell, who tagged Terracina at the plate to keep the game scoreless.

"Getting out of that first inning after giving up the leadoff triple gave her a lot of fire, and she was really excited about that," Torina said. "After that, she just continued to dominate the rest of the way. I thought she was really solid, and it was another great performance from her."

Fico proceeded to find her groove and retired 19 consecutive batters before a one-out walk in the seventh inning.

"All of her pitches were working," Russell said. "Her curve ball was breaking great. Everything she can throw was working at its best. I was really proud of her and the way she came through. I could tell she really wanted the win."

LSU used a two-out rally in the fourth inning for the game's first run. Rikki Alcaraz and Dylan Supak ripped singles to centerfield to set the table for Russell. She took a 3-1 offering and deposited a RBI-single to vault LSU ahead, 1-0.

On her next plate appearance during the sixth inning, Russell ripped a solo home run for an insurance run to make it 2-0.

"It's awesome because we have worked so hard these past couple of weeks," Russell said. "We have hit some bumps, but now we are starting to come together as a team. We are doing our job and doing the right things. It is a great feeling."



2012 LSU Softball
McNeese State at LSU
Feb 25, 2012 at Baton Rouge, La. (Tiger Park)



McNeese State 0 (9-5)

LSU 2 (7-4)

Player	ab	r	h	rbi	bb	so	po	a	lob
Terracina, Claire lf	3	0	1	0	0	1	2	0	0
Kennedy, Kim 1b	2	0	0	0	0	0	6	0	0
Conley, Stacey c	3	0	0	0	0	1	4	0	0
DiVittorio, Alanna cf	2	0	0	0	1	1	3	0	0
Koetting, Marissa 2b	3	0	0	0	0	2	1	0	2
Denham, Tiffany dp	2	0	0	0	0	1	0	0	0
Gunn, Caitlyn ph	1	0	0	0	0	0	0	0	1
Price, Dani 3b	2	0	0	0	0	0	0	1	0
Roux, Katie ss	2	0	0	0	0	0	1	2	0
Langner, Lauren rf	2	0	0	0	0	0	1	0	0
Bond, Meagan p	0	0	0	0	0	0	0	1	0
Totals	22	0	1	0	1	6	18	4	3

Player	ab	r	h	rbi	bb	so	po	a	lob
Ashley Applegate rf	3	0	0	0	0	0	1	0	3
Simone Heyward cf	2	0	1	0	1	0	0	0	0
Ashley Langoni lf	3	0	0	0	0	1	3	0	0
Juliana Santos ss	3	0	0	0	0	0	1	3	1
Tammy Wray 3b	3	0	1	0	0	1	2	1	1
Rikki Alcaraz 2b	3	1	1	0	0	1	1	0	0
Dylan Supak 1b	2	0	1	0	0	0	5	0	0
Heidi Pizer 1b	0	0	0	0	0	0	1	0	0
Morgan Russell c	3	1	2	2	0	0	6	1	0
Cassie Trosclair dp	3	0	0	0	0	0	0	0	2
Rachele Fico p	0	0	0	0	0	0	1	2	0
Totals	25	2	6	2	1	3	21	7	7

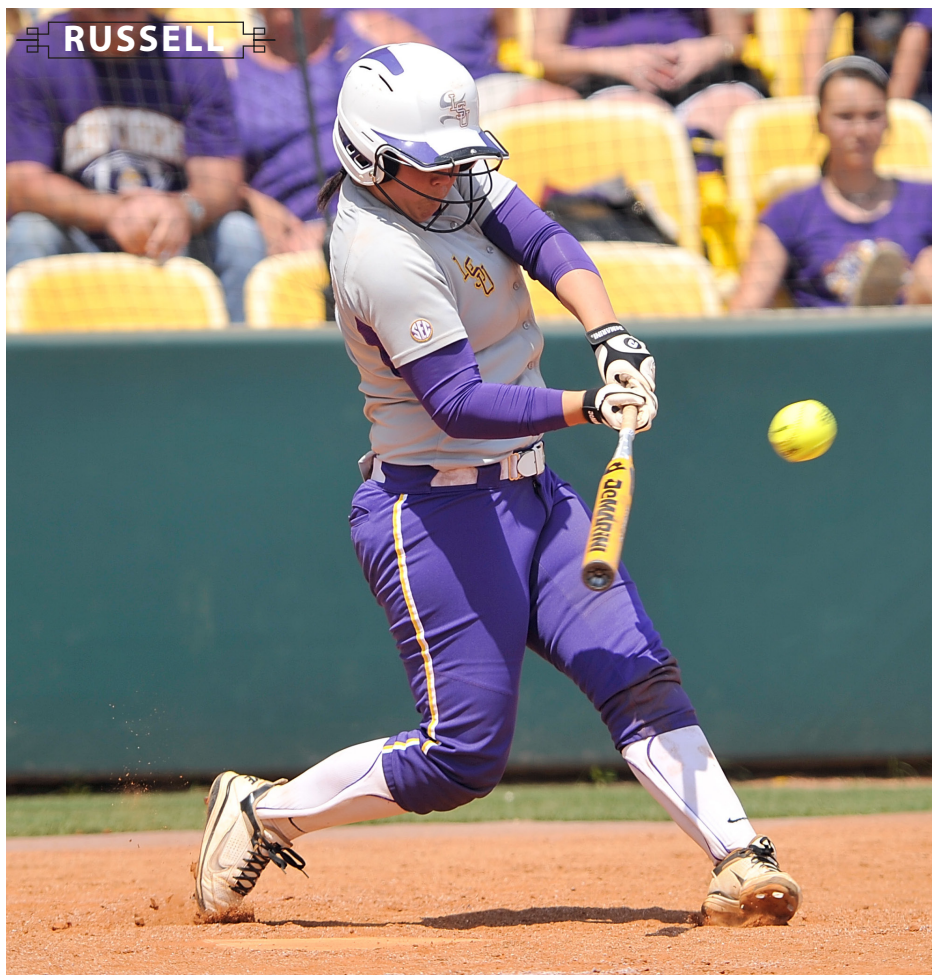
Score by Innings	1	2	3	4	5	6	7	R	H	E
McNeese State	0	0	0	0	0	0	0	0	1	1
LSU	0	0	0	1	0	1	X	2	6	0

E - Bond, M.(1). LOB - McNeese St 3; LSU 7. 3B - Terracina, C(2). HR - Russell(1). HBP - Kennedy, K.; Supak. SB - Heyward(3).

McNeese State	ip	h	r	er	bb	so	ab	bf	np	LSU	ip	h	r	er	bb	so	ab	bf	np
Bond, Meagan	6.0	6	2	2	1	3	25	27	114	Rachele Fico	7.0	1	0	0	1	6	22	24	91

Win - Fico (4-1). Loss - Bond, M. (7-3). Save - None.
 HBP - by Fico (Kennedy, K.); by Bond, M. (Supak). Inherited runners/scored: None. Pitches/strikes: Bond, M. 114/76; Fico 91/63.

Umpires - HP: Debbie Berens 1B: Michael Parker 3B: Darryl Sanders
 Start: 3:10 pm Time: 1:45 Attendance: 1268
 Weather: 59 cloudy; NE 8 mph



2012 SEASON SERIES
LSU 4, MCNEESE STATE 0 - 03/28

LAKE CHARLES - Brittany Mack fired a four-hitter as the LSU softball team extended its season's long winning streak to eight games, and the Tigers claimed their fourth straight shutout, a 4-0 victory over McNeese State at Cowgirl Diamond.

LSU (24-8) also has won 21 of its last 25 games dating back to Feb. 19 and ended McNeese State's (20-9) run of five consecutive wins.

Mack, the reigning SEC Co-Pitcher of the Week, won her eighth straight decision since March 3 and improved to 11-4 on the season. She fanned six batters versus two walks to secure LSU's 16th shutout of the season.

After a leadoff triple during the first inning, Mack sat down 10 batters in a row. Five of the seven McNeese State runners she stranded were in scoring position.

"We definitely faced a quality opponent tonight in McNeese State, and we knew they were someone we couldn't take lightly," head coach Beth Torina said. "We put Brittany Mack on the mound, approached it like one of the tougher games on our schedule and we found a way to win."

Offensively, LSU was fueled by Allison Falcon's 2-for-3 effort at the plate. Ashley Applegate, Jacee Blades and Ashleigh Kuhn also recorded hits for the Tigers.

"Allison is a tough out at the plate," Torina said. "I feel that she always has quality at-bats and is going to make something happen by putting the ball in play hard. There's no doubt that she's a difference maker in our lineup."

LSU broke through for a trio of runs during the fourth inning. Falcon smashed a one-out single to centerfield, while Applegate followed with a double into the right centerfield gap.

After Lauren Houston was hit-by-a-pitch to fill the bases, Falcon crossed the plate with LSU's first run via a wild pitch, and Applegate alertly scored from second base after a throwing error by MSU catcher Ashley Modzelewski. The Tigers made it 3-0 on a Katie Roux fielding miscue.

LSU tacked on another run in the fifth inning. With runners on the corners, Ashley Langoni and Falcon executed a double steal to perfection to push the lead to 4-0. Falcon got caught in a rundown in between first and second base, which allowed Langoni to sprint home and slide around the tag.

Tiffany Denham was tagged with the loss and fell to 7-3 for the season. She was touched up for four runs, one earned, on five hits.

"Coming off a great weekend at South Carolina, we knew we had to be focused for McNeese State," Falcon said. "We had to play at our best to come in and get the job done. This win contributes to the momentum we are building. Our defense is doing well, our pitching is phenomenal and our hitting is coming along."



2012 LSU Softball
LSU at McNeese State
Mar 28, 2012 at Lake Charles, La. (Cowgirl Diamond)



LSU 4 (24-8)

McNeese State 0 (20-9)

Player	ab	r	h	rbi	bb	so	po	a	lob	Player	ab	r	h	rbi	bb	so	po	a	lob
A.J. Andrews cf	3	0	0	0	0	0	0	0	1	Terracina, Claire lf	4	0	1	0	0	1	0	0	2
Ashleigh Kuhn ph	1	0	1	0	0	0	0	0	0	Langner, Lauren 2b	3	0	0	0	0	0	4	2	2
Jacee Blades dp	3	0	1	0	0	0	0	0	0	Divittorio, Alanna cf	2	0	0	0	1	0	0	0	0
Kailey McCasland ph	1	0	0	0	0	0	0	0	0	Koetting, Marissa rf	3	0	1	0	0	1	0	0	1
Ashley Langoni lf	3	1	0	0	1	0	1	0	0	Modzelewski, Ashley c	3	0	0	0	0	2	4	0	0
Juliana Santos ss	3	0	0	0	0	2	2	1		Kennedy, Kim 3b	3	0	1	0	0	0	0	4	2
Allison Falcon 2b	3	1	2	0	0	0	2	0	0	Price, Dani 1b	3	0	0	0	0	1	8	3	0
Ashley Applegate rf	3	1	1	0	0	1	1	0	1	Roux, Katie ss	2	0	0	0	1	1	4	4	0
Lauren Houston c	0	1	0	0	0	7	0	0		Jolly, Kelsey pr	0	0	0	0	0	0	0	0	0
Simone Heyward ph	1	0	0	0	0	0	0	0	0	Conley, Stacey dp	3	0	1	0	0	0	0	0	0
Tammy Wray 3b	3	0	0	0	1	3	3	0		Krippa, Megan pr	0	0	0	0	0	0	0	0	0
Dylan Supak 1b	2	0	0	0	0	1	4	0	2	Young, MyKeisha pr	0	0	0	0	0	0	0	0	0
Heidi Pizer ph/1b	1	0	0	0	0	1	1	0	0	Denham, Tiffany p	0	0	0	0	0	0	1	2	0
Brittany Mack p	0	0	0	0	0	0	3	0	0	Totals	26	0	4	0	2	6	21	15	7
Totals	27	4	5	0	1	4	21	8	5										

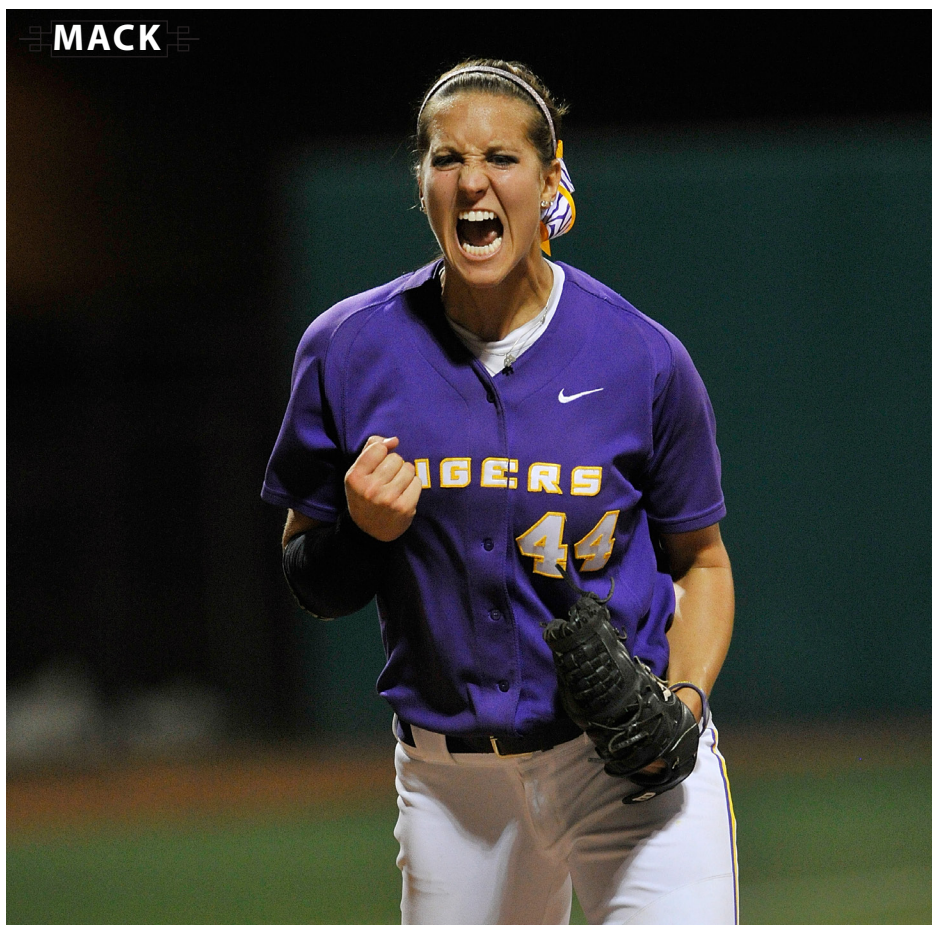
Score by Innings	1	2	3	4	5	6	7	R	H	E
LSU	0	0	0	3	1	0	0	4	5	0
McNeese State	0	0	0	0	0	0	0	0	4	3

E - Modzelewski(1); Roux, K. 2(6). DP - McNeese St 1. LOB - LSU 5; McNeese St 7. 2B - Applegate(5); Conley, S.(3). 3B - Terracina, C(7). HBP - Houston 2. SB - Langoni(4); Falcon(5).

LSU	ip	h	r	er	bb	so	ab	bf	np	McNeese State	ip	h	r	er	bb	so	ab	bf	np
Brittany Mack	7.0	4	0	0	2	6	26	28	109	Denham, Tiffany	7.0	5	4	1	1	4	27	30	100

Win - Mack (11-3). Loss - Denham, T. (7-3). Save - None.
 WP - Denham, T.(2). HBP - by Denham, T. (Houston); by Denham, T. (Houston). Inherited runners/scored: None.
 Pitches/strikes: Mack 109/78; Denham, T. 100/64.

Umpires - HP: Steven Patrick 1B: Butch Dowies 3B: Wayne George
 Start: 6:02 pm Time: 1:51 Attendance: 794
 Weather: 76 mostly cloudy; SSE 10 mph





2012 LSU Softball
Overall Statistics for LSU (as of Apr 15, 2012)
 (All games Sorted by Batting avg)



Record: 29-13 Home: 20-3 Away: 6-7 Neutral: 3-3 SEC: 11-6

Player	avg	gp-gs	ab	r	h	2b	3b	hr	rbi	tb	slg%	bb	hp	so	gdp	ob%	sf	sh	sb-att	po	a	e	fld%	
0 Ashley Langoni	.327	42-42	101	31	33	8	1	6	26	61	.604	37	1	16	0	.500	3	0	5-6	46	3	1	.980	
32 Allison Falcon	.310	31-31	84	15	26	2	1	2	17	36	.429	5	4	6	1	.376	0	2	5-6	39	32	5	.934	
2 Juliana Santos	.305	35-35	95	15	29	4	0	1	19	36	.379	14	2	11	1	.398	2	0	5-6	48	51	2	.980	
10 Ashley Applegate	.228	41-41	114	15	26	5	1	0	5	33	.289	15	2	15	1	.328	0	2	4-4	36	1	2	.949	

28 Tammy Vermeulen	.500	12-1	4	3	2	0	0	0	3	2	.500	2	0	0	0	.667	0	0	2-2	0	0	0	.000	
6 A.J. Andrews	.282	32-27	78	13	22	0	1	0	8	24	.308	12	0	12	0	.378	0	1	10-12	18	0	1	.947	
23 Jacee Blades	.262	30-19	61	9	16	1	0	0	2	17	.279	4	2	11	0	.328	0	3	3-6	7	0	1	.875	
47 Ashleigh Kuhn	.240	22-19	50	3	12	2	0	0	11	14	.280	5	0	8	2	.304	1	1	0-1	94	0	2	.979	
11 Dylan Supak	.239	29-25	67	8	16	3	0	1	11	22	.328	6	2	13	1	.320	0	3	1-1	78	6	4	.955	
1 Rikki Alcaraz	.238	21-16	42	13	10	3	0	0	4	13	.310	10	1	13	0	.396	0	0	2-3	33	16	2	.961	
16 Lauren Houston	.231	22-21	39	10	9	0	0	0	4	9	.231	5	13	4	0	.466	1	2	0-0	156	10	4	.976	
33 Kailey McCasland	.229	23-18	48	7	11	1	0	1	7	15	.313	4	2	11	2	.315	0	0	1-1	11	15	4	.867	
4 Morgan Russell	.205	22-21	44	3	9	1	0	1	6	13	.295	4	7	4	1	.364	0	3	0-0	146	14	0	1.000	
25 Simone Heyward	.182	22-14	33	8	6	0	0	0	3	6	.182	9	2	9	0	.370	2	1	5-5	15	1	1	.941	
12 Heidi Pizer	.174	19-8	23	6	4	0	0	0	4	4	.174	4	0	8	0	.296	0	0	1-1	52	2	0	1.000	
3 Cassie Trosclair	.167	15-8	24	2	4	1	0	0	4	5	.208	1	1	11	0	.231	0	1	2-3	2	1	2	.600	
18 Tammy Wray	.145	36-31	76	6	11	1	0	0	8	12	.158	13	3	19	1	.293	0	2	1-1	31	56	10	.897	
9 Alex Boulet	.000	20-1	7	5	0	0	0	0	0	0	.000	0	0	2	0	.000	0	0	5-6	1	0	0	1.000	
44 Brittany Mack	.000	4-2	4	0	0	0	0	0	0	0	.000	0	0	1	0	.000	0	0	0-0	7	37	3	.936	
Totals	.247	42	994	172	246	32	4	12	142	322	.324	150	42	174	10	.367	9	21	52-64	828	272	47	.959	
Opponents	.209	42	1038	96	217	27	3	15	80	295	.284	93	27	293	3	.291	1	23	35-48	792	316	40	.965	

LOB - Team (253), Opp (258). DPs turned - Team (4), Opp (17). CI - Team (0), Opp (1). IBB - Team (5), Langoni 5.

(All games Sorted by Earned run avg)

Player	era	w-l	app	gs	cg	sho	sv	ip	h	r	er	bb	so	2b	3b	hr	b/avg	wp	hp	bk	sfa	sha
37 Rachele Fico	1.07	14-6	22	20	15	9/1	1	131.0	92	32	20	45	129	13	2	6	.192	5	9	0	1	11
44 Brittany Mack	2.46	12-7	22	19	14	3/2	1	113.2	108	55	40	38	127	11	1	6	.239	5	16	1	0	11

20 Meghan Patterson	2.01	3-0	8	3	3	2/3	0	31.1	17	9	9	10	37	3	0	3	.159	4	2	0	0	1
Totals	1.75	29-13	42	42	32	17/3	2	276.0	217	96	69	93	293	27	3	15	.209	14	27	1	1	23
Opponents	3.63	13-29	42	42	20	7/1	1	264.0	246	172	137	150	174	32	4	12	.247	13	42	7	9	21

PB - Team (6), Houston 4, Russell 2, Opp (5). Pickoffs - Team (1), Russell 1. SBA/ATT - Russell (17-25), Mack (19-23), Houston (18-23), Fico (14-21), Patterson (2-4).

STARTERS BY POSITION RECORD

P	STARTS	RECORD	2B	STARTS	RECORD	LF	STARTS	RECORD	DP	STARTS	RECORD
Rachele Fico	20	14-6	Allison Falcon	25	15-10	Ashley Langoni	42	29-13	Jacee Blades	13	11-2
Brittany Mack	19	12-7	Rikki Alcaraz	15	13-2				Kailey McCasland	7	3-4
Meghan Patterson	3	3-0	Cassie Trosclair	2	1-1	CF	STARTS	RECORD	Cassie Trosclair	6	4-2
						A.J. Andrews	24	15-9	Ashley Applegate	4	1-3
C	STARTS	RECORD	SS	STARTS	RECORD	Simone Heyward	14	10-4	Dylan Supak	3	2-1
Lauren Houston	21	18-3	Juliana Santos	33	20-13	Jacee Blades	3	3-0	Allison Falcon	2	2-0
Morgan Russell	20	10-10	Dylan Supak	5	5-0	Alex Boulet	1	1-0	Juliana Santos	2	2-0
			Allison Falcon	4	4-0	RF	STARTS	RECORD	Rikki Alcaraz	1	0-1
1B	STARTS	RECORD	3B	STARTS	RECORD	Ashley Applegate	37	27-10	A.J. Andrews	1	1-0
Ashleigh Kuhn	18	10-8	Tammy Wray	31	21-10	Jacee Blades	3	0-3	Ashleigh Kuhn	1	1-0
Dylan Supak	17	13-4	Kailey McCasland	11	8-3	A.J. Andrews	2	2-0	Heidi Pizer	1	1-0
Heidi Pizer	7	6-1							Tammy Vermeulen	1	1-0

• 2012 game-by-game lineups by fielding position is listed on page 15.



2012 LSU Softball
Conference statistics for LSU (as of Apr 15, 2012)
(SEC games only Sorted by Batting avg)



Record: 11-6 Home: 7-1 Away: 4-5 SEC: 11-6

Player	avg	gp-gs	ab	r	h	2b	3b	hr	rbi	tb	slg%	bb	hp	so	gdp	ob%	sf	sh	sb-att	po	a	e	fld%	
0 Ashley Langoni	.389	17-17	36	12	14	3	0	3	10	26	.722	20	0	5	0	.596	1	0	2-3	21	2	0	1.000	
2 Juliana Santos	.350	14-14	40	3	14	1	0	1	10	18	.450	3	1	8	0	.400	1	0	1-2	25	25	2	.962	
6 A.J. Andrews	.310	14-14	42	7	13	0	1	0	7	15	.357	6	0	8	0	.396	0	0	6-7	12	0	1	.923	
32 Allison Falcon	.255	17-17	47	3	12	1	1	1	8	18	.383	1	2	4	0	.300	0	1	1-1	23	21	2	.957	
10 Ashley Applegate	.220	17-17	50	6	11	0	1	0	4	13	.260	3	2	7	1	.291	0	0	1-1	13	0	1	.929	
23 Jacee Blades	.217	16-15	46	7	10	1	0	0	2	11	.239	3	1	7	0	.280	0	3	1-3	5	0	1	.833	

3 Cassie Troclair	.333	6-0	3	1	1	0	0	0	1	1	.333	0	0	2	0	.333	0	0	0-0	1	0	0	1.000	
16 Lauren Houston	.263	9-9	19	3	5	0	0	0	0	5	.263	2	3	2	0	.417	0	1	0-0	50	7	2	.966	
11 Dylan Supak	.167	11-10	24	3	4	2	0	0	2	6	.250	3	1	8	0	.286	0	1	0-0	27	3	1	.968	
4 Morgan Russell	.143	8-8	14	1	2	0	0	0	1	2	.143	2	2	3	0	.333	0	1	0-0	59	5	0	1.000	
18 Tammy Wray	.121	17-15	33	2	4	0	0	0	3	4	.121	9	1	7	1	.326	0	1	0-0	12	30	4	.913	
47 Ashleigh Kuhn	.111	9-8	18	1	2	0	0	0	0	2	.111	1	0	3	1	.158	0	1	0-0	44	0	1	.978	
12 Heidi Pizer	.100	7-4	10	3	1	0	0	0	1	1	.100	1	0	5	0	.182	0	0	0-0	34	1	0	1.000	
33 Kailey McCasland	.083	6-4	12	2	1	0	0	0	0	1	.083	0	1	4	0	.154	0	0	1-1	0	6	2	.750	
25 Simone Heyward	.000	7-0	4	1	0	0	0	0	0	0	.000	2	0	3	0	.333	0	0	1-1	0	0	0	.000	
1 Rikki Alcaraz	.000	3-1	3	2	0	0	0	0	0	0	.000	2	0	0	0	.400	0	0	0-0	2	2	0	1.000	
44 Brittany Mack	.000	1-1	1	0	0	0	0	0	0	0	.000	0	0	0	0	.000	0	0	0-0	2	10	0	1.000	
9 Alex Boulet	.000	6-0	0	3	0	0	0	0	0	0	.000	0	0	0	0	.000	0	0	1-2	0	0	0	.000	
28 Tammy Vermeulen	.000	1-0	0	0	0	0	0	0	0	0	.000	0	0	0	0	.000	0	0	0-0	0	0	0	.000	
Totals	.234	17	402	60	94	8	3	5	49	123	.306	58	14	76	3	.349	2	9	15-21	332	121	19	.960	
Opponents	.211	17	417	44	88	7	1	7	39	118	.283	38	9	107	0	.290	1	11	17-23	325	134	10	.979	

LOB - Team (100), Opp (100). DPs turned - Team (0), Opp (4). IBB - Team (3), Langoni 3.

(SEC games only Sorted by Earned run avg)

Player	era	w-l	app	gs	cg	sho	sv	ip	h	r	er	bb	so	2b	3b	hr	b/avg	wp	hp	bk	sfa	sha		
37 Rachele Fico	1.61	7-3	11	10	7	3/1	0	65.1	49	21	15	26	64	5	1	5	.202	2	3	0	1	5		
44 Brittany Mack	2.68	4-3	9	7	6	1/0	1	44.1	38	23	17	12	43	2	0	2	.222	1	6	0	0	6		

20 Meghan Patterson	0.00	0-0	1	0	0	0/1	0	1.0	1	0	0	0	0	0	0	0	.250	0	0	0	0	0		
Totals	2.02	11-6	17	17	13	5/1	1	110.2	88	44	32	38	107	7	1	7	.211	3	9	0	1	11		
Opponents	3.36	6-11	17	17	7	4/0	1	108.1	94	60	52	58	76	8	3	5	.234	7	14	6	2	9		

PB - Team (2), Russell 2, Opp (2). SBA/ATT - Russell (10-13), Fico (7-12), Mack (10-11), Houston (7-10).

STARTERS BY LINEUP SPOT RECORD

1ST	STARTS	RECORD	Allison Falcon	3	3-0	7TH	STARTS	RECORD	Lauren Houston	13	11-2	9TH	STARTS	RECORD	A.J. Andrews	10	6-4
Ashley Applegate	25	18-7	Ashleigh Kuhn	2	1-1	Tammy Wray	11	6-5	Ashleigh Kuhn	6	3-3	Heidi Pizer	6	5-1	Dylan Supak	6	5-1
A.J. Andrews	15	10-5	Dylan Supak	2	2-0	Kailey McCasland	5	3-2	Heidi Pizer	1	1-0	Allison Falcon	4	1-3	Cassie Troclair	4	4-0
Jacee Blades	1	1-0	5TH STARTS RECORD			Morgan Russell	4	1-3	Simone Heyward	3	2-1	Rikki Alcaraz	1	1-0	Jacee Blades	1	1-0
Simone Heyward	1	0-1	Allison Falcon	13	8-5	Rikki Alcaraz	2	2-0	Alex Boulet	1	1-0	Morgan Russell	16	10-6	• 2012 game-by-game lineups by batting order is listed on page 14.		
2ND STARTS RECORD			Dylan Supak	12	9-3	Ashleigh Kuhn	2	2-0	Tammy Wray	11	7-4						
Jacee Blades	16	11-5	Tammy Wray	7	6-1	Heidi Pizer	1	1-0	Lauren Houston	7	6-1						
Allison Falcon	10	8-2	Ashleigh Kuhn	6	3-3	8TH STARTS RECORD			Ashleigh Kuhn	2	1-1						
Simone Heyward	9	7-2	Ashley Applegate	2	2-0	Morgan Russell	16	10-6	Rikki Alcaraz	1	1-0						
Cassie Troclair	4	1-3	Rikki Alcaraz	1	1-0	Tammy Wray	11	7-4	Jacee Blades	1	1-0						
A.J. Andrews	2	2-0	Morgan Russell	1	0-1	Lauren Houston	7	6-1	Kailey McCasland	1	0-1						
Juliana Santos	1	0-1	6TH STARTS RECORD			Ashleigh Kuhn	2	1-1	Heidi Pizer	1	1-0						
3RD STARTS RECORD			Ashley Applegate	14	8-6	Dylan Supak	1	1-0	Dylan Supak	1	1-0						
Ashley Langoni	38	26-12	Kailey McCasland	12	8-4	Ashleigh Kuhn	1	1-0	Tammy Vermuelen	1	1-0						
Juliana Santos	3	2-1	Rikki Alcaraz	11	8-3	4TH STARTS RECORD											
Allison Falcon	1	1-0	Tammy Wray	2	2-0	Juliana Santos	31	20-11									
4TH STARTS RECORD			Simone Heyward	1	1-0	Ashley Langoni	4	3-1									
Juliana Santos	31	20-11	Lauren Houston	1	1-0												
Ashley Langoni	4	3-1	Ashleigh Kuhn	1	1-0												

NO.	PLAYER [HR NUMBER]	OPPONENT [DATE]	PITCHER	ON-BASE	INNING	OUTS	COUNT	SCORE	FINAL
1	Ashley Langoni [1]	Penn State [Feb. 10]	Akamine [RHP]	0	5	1	1-1	1-5	L, 5-3
2	Ashley Langoni [2]	vs. Utah State [Feb. 19]	Harmon [RHP]	1	4	0	2-2	11-0	W, 13-0
3	Morgan Russell [1]	McNeese State [Feb. 25]	Bond [RHP]	0	6	2	2-2	1-0	W, 2-0
4	Kailey McCasland [1]	vs. No. 23 Oklahoma State [March 3]	Espinosa [RHP]	0	5	1	2-1	6-2	W, 7-4
5	Ashley Langoni [3]	at Nicholls State [March 7]	Andrus [RHP]	1	1	2	0-1	0-0	W, 10-2
6	Dylan Supak [1]	at Nicholls State [March 7]	Andrus [RHP]	0	1	2	1-1	2-0	W, 10-2
7	Allison Falcon [1]	Troy [March 9]	Affeldt [RHP]	1	5	1	1-0	2-1	W, 6-3
8	Ashley Langoni [4]	at South Carolina [March 24]	Broyles [RHP]	1	3	1	2-1	1-0	W, 5-0
9	Ashley Langoni [5]	at South Carolina [March 25]	Howser [RHP]	0	1	2	0-0	0-0	W, 9-0
10	Juliana Santos [1]	at South Carolina [March 25]	Howser [RHP]	1	4	2	0-2	5-0	W, 9-0
11	Ashley Langoni [6]	at No. 2 Alabama [April 7]	Jury [RHP]	1	1	1	3-1	0-0	W, 3-2
12	Allison Falcon [2]	at No. 10 Tennessee [April 15]	E. Renfroe [RHP]	0	2	0	2-0	0-0	L, 10-2

Bold represents game tying or go-ahead home run

HOME RUN BREAKDOWN

SITE	COUNT	CLASS	GAME TYPE
Home	3	Freshmen	2
Away	7	Sophomore	2
Neutral	2	Junior	0
		Senior	8
HR TYPE		INNING	
Solo	6	1st Inning	4
Two-Run	6	2nd Inning	1
Three-Run	0	3rd Inning	1
Grand Slam	0	4th Inning	2
		5th Inning	3
NUMBER OF OUTS		6th Inning	1
0 Outs	2	7th Inning	0
1 Out	5	Extra Innings	0
2 Outs	5		
		GAME RESULT	
		Wins	10
		Losses	2
		MISC	
		Leadoff	1
		Inside the Park	0

DATE	OPPONENT	RESULT	INN	LSU R-H-E	OPP. R-H-E	RECORD [SEC]	PITCHER OF RECORD	ATT	TIME
Feb. 10	Penn State [1]	L, 5-3	7	3-5-1	5-4-1	0-1 [0-0]	Mack [0-1]	1,073	2:44
Feb. 11	No. 15 Michigan [1]	L, 2-1	7	1-3-0	2-11-0	0-2 [0-0]	Mack [0-2]	1,298	1:52
Feb. 11	Penn State [1]	W, 1-0	[8]	1-3-1	0-2-1	1-2 [0-0]	Fico [1-0]	1,298	2:53
Feb. 12	Louisiana Tech [1]	W, 8-0	[5]	8-8-0	0-1-1	2-2 [0-0]	Fico [2-0]	1,046	1:28
Feb. 18	vs. DePaul [2]	L, 3-1	7	1-2-1	3-9-1	2-3 [0-0]	Fico [2-1]	387	2:14
Feb. 18	vs. Cal State Northridge [2]	W, 11-0	[5]	11-8-0	0-1-2	3-3 [0-0]	Mack [1-2]	387	1:34
Feb. 19	vs. No. 3 California [2]	L, 14-3	[5]	3-6-0	14-12-0	3-4 [0-0]	Mack [1-3]	414	1:54
Feb. 19	vs. Utah State [2]	W, 13-0	[5]	13-12-0	0-1-1	4-4 [0-0]	Fico [3-1]	414	1:48
Feb. 21	Southeastern Louisiana	W, 7-0	7	7-9-1	0-3-4	5-4 [0-0]	Mack [2-3]	893	2:02
Feb. 25	South Alabama [3]	W, 5-4	7	5-8-2	4-8-0	6-4 [0-0]	Mack [3-3]	1,268	2:00
Feb. 25	McNeese State [3]	W, 2-0	7	2-6-0	0-1-1	7-4 [0-0]	Fico [4-1]	1,268	1:45
Feb. 26	South Alabama [3]	W, 1-0	7	1-3-2	0-7-1	8-4 [0-0]	Fico [5-1]	1,065	1:58
Feb. 26	Alcorn State [3]	W, 2-0	7	2-3-1	0-1-0	9-4 [0-0]	Patterson [1-0]	1,065	1:26
March 2	at No. 8 Oklahoma [4]	L, 7-0	7	0-1-2	7-7-2	9-5 [0-0]	Mack [3-4]	647	2:04
March 3	vs. No. 23 Oklahoma State [4]	W, 7-4	7	7-9-3	4-9-3	10-5 [0-0]	Mack [4-4]	1,137	2:33
March 3	vs. No. 8 Oklahoma [4]	L, 5-0	7	0-3-2	5-6-0	10-6 [0-0]	Fico [5-2]	1,137	2:02
March 4	at No. 23 Oklahoma State [4]	L, 1-0	[10]	0-6-4	1-12-1	10-7 [0-0]	Fico [5-3]	322	2:45
March 7	at Nicholls State	W, 10-2	[5]	10-9-0	2-4-2	11-7 [0-0]	Fico [6-3]	465	1:38
March 9	Mississippi Valley State [5]	W, 2-0	7	2-2-0	0-3-1	12-7 [0-0]	Patterson [2-0]	992	1:45
March 9	Troy [5]	W, 6-3	7	6-9-5	3-9-2	13-7 [0-0]	Mack [5-4]	992	2:30
March 10	Troy [5]	W, 1-0	7	1-6-0	0-1-0	14-7 [0-0]	Fico [7-3]	1,019	1:37
March 10	Mississippi Valley State [5]	W, 16-0	[5]	16-13-1	0-2-2	15-7 [0-0]	Mack [6-4]	1,019	1:44
March 14	No. 20 Auburn [SEC]	W, 4-1	7	4-9-3	1-4-0	16-7 [1-0]	Mack [7-4]	1,226	1:59
March 14	No. 20 Auburn [SEC]	L, 2-0	7	0-1-1	2-6-1	16-8 [1-1]	Fico [7-4]	1,226	2:05
March 16	Mississippi State [SEC]	W, 10-7	7	10-8-3	7-8-2	17-8 [2-1]	Fico [8-4]	1,022	2:41
March 17	Mississippi State [SEC]	W, 3-1	7	3-5-2	1-8-0	18-8 [3-1]	Mack [8-4]	1,397	2:01
March 18	Mississippi State [SEC]	W, 4-0	7	4-3-2	0-3-2	19-8 [4-1]	Fico [9-4]	1,098	2:19
March 20	Georgia Tech	W, 2-1	7	2-4-2	1-5-2	20-8 [4-1]	Mack [9-4]	1,169	2:34
March 23	at South Carolina [SEC]	W, 5-0	7	5-8-0	0-4-0	21-8 [5-1]	Fico [10-4]	283	1:59
March 24	at South Carolina [SEC]	W, 5-0	7	5-6-2	0-1-1	22-8 [6-1]	Mack [10-4]	463	2:19
March 25	at South Carolina [SEC]	W, 9-0	[6]	9-8-0	0-3-1	23-8 [7-1]	Fico [11-4]	632	1:50
March 28	at McNeese State	W, 4-0	7	4-5-0	0-4-3	24-8 [7-1]	Mack [11-4]	794	1:51
March 30	Arkansas [SEC]	W, 1-0	7	1-7-1	0-3-1	25-8 [8-1]	Fico [12-4]	1,389	1:59
March 31	Arkansas [SEC]	W, 9-1	[5]	9-11-0	1-3-1	26-8 [9-1]	Mack [12-4]	1,421	1:33
April 1	Arkansas [SEC]	W, 3-2	7	3-7-0	2-3-1	27-8 [10-1]	Fico [13-4]	1,426	2:01
April 4	Nicholls State	W, 6-1	7	6-9-0	1-6-1	28-8 [10-1]	Patterson [3-0]	1,122	1:58
April 6	at No. 2 Alabama [SEC]	L, 6-0	7	0-4-2	6-5-0	28-9 [10-2]	Mack [12-5]	3,266	2:14
April 7	at No. 2 Alabama [SEC]	W, 3-2	7	3-5-0	2-4-0	29-9 [11-2]	Fico [14-4]	3,521	2:23
April 8	at No. 2 Alabama [SEC]	L, 6-0	7	0-1-0	6-7-0	29-10 [11-3]	Mack [12-6]	2,684	1:54
April 13	at No. 10 Tennessee [SEC]	L, 2-0	7	0-3-0	2-6-0	29-11 [11-4]	Fico [14-5]	1,514	1:50
April 14	at No. 10 Tennessee [SEC]	L, 4-2	7	2-2-0	4-7-0	29-12 [11-5]	Mack [12-7]	1,609	1:55
April 15	at No. 10 Tennessee [SEC]	L, 10-2	[6]	2-6-3	10-13-0	29-13 [11-6]	Fico [14-6]	1,845	2:17

All home games are bolded and played at Tiger Park; Rankings reflect NFCA and USA Softball Top 25 polls on day of game; [1] Tiger Classic [Tiger Park]; [2] Louisville Slugger Desert Classic [Las Vegas, Nev.]; [3] Tiger Invitational [Tiger Park], [4] The Preview [Norman/Oklahoma City/Stillwater, Okla.]; [5] Purple & Gold Challenge [Baton Rouge]; [6] SEC Tournament [Tuscaloosa, Ala.].

DATE	OPPONENT	1ST	2ND	3RD	4TH	5TH	6TH	7TH	8TH	9TH
Feb. 10	Penn State [1]	Heyward	Santos	Langoni	Kuhn	Russell	Applegate	Wray	McCasland	Falcon
Feb. 11	No. 15 Michigan [1]	Applegate	Heyward	Santos	Langoni	Kuhn	McCasland	Russell	Wray	Falcon
Feb. 11	Penn State [1]	Applegate	Heyward	Santos	Langoni	Kuhn	Alcaraz	Wray	Houston	Blades
Feb. 12	Louisiana Tech [1]	Applegate	Heyward	Langoni	Santos	Kuhn	McCasland	Russell	Alcaraz	Falcon
Feb. 18	vs. DePaul [2]	Applegate	Heyward	Langoni	Santos	Kuhn	McCasland	Russell	Wray	Falcon
Feb. 18	vs. Cal State Northridge [2]	Applegate	Falcon	Santos	Langoni	Alcaraz	Wray	Houston	Pizer	Heyward
Feb. 19	vs. No. 3 California [2]	Applegate	Falcon	Langoni	Santos	Kuhn	McCasland	Wray	Russell	Heyward
Feb. 19	vs. Utah State [2]	Applegate	Falcon	Langoni	Santos	Wray	Heyward	Houston	Supak	Andrews
Feb. 21	Southeastern Louisiana	Applegate	Falcon	Langoni	Kuhn	Wray	Alcaraz	McCasland	Russell	Heyward
Feb. 25	South Alabama [3]	Applegate	Heyward	Langoni	Santos	Wray	Alcaraz	Supak	Houston	Trosclair
Feb. 25	McNeese State [3]	Applegate	Heyward	Langoni	Santos	Wray	Alcaraz	Supak	Russell	Trosclair
Feb. 26	South Alabama [3]	Applegate	Heyward	Langoni	Santos	Wray	Alcaraz	Supak	Russell	Trosclair
Feb. 26	Alcorn State [3]	Andrews	Heyward	Langoni	Santos	Wray	Alcaraz	Kuhn	Houston	Pizer
March 2	at No. 8 Oklahoma [4]	Applegate	Trosclair	Langoni	Santos	Wray	Alcaraz	Supak	Houston	Andrews
March 3	vs. No. 23 Oklahoma State [4]	Applegate	Trosclair	Langoni	Santos	Supak	Alcaraz	McCasland	Houston	Andrews
March 3	vs. No. 8 Oklahoma [4]	Applegate	Trosclair	Langoni	Santos	Supak	Alcaraz	McCasland	Russell	Andrews
March 4	at No. 23 Oklahoma State [4]	Applegate	Trosclair	Langoni	Santos	Supak	Alcaraz	McCasland	Russell	Andrews
March 7	at Nicholls State	Applegate	Andrews	Falcon	Langoni	Supak	McCasland	Houston	Kuhn	Trosclair
March 9	Mississippi Valley State [5]	Applegate	Falcon	Langoni	Santos	Supak	McCasland	Alcaraz	Russell	Boulet
March 9	Troy [5]	Applegate	Falcon	Langoni	Santos	Supak	McCasland	Houston	Blades	Andrews
March 10	Troy [5]	Applegate	Falcon	Langoni	Santos	Supak	McCasland	Pizer	Russell	Andrews
March 10	Mississippi Valley State [5]	Applegate	Falcon	Langoni	Supak	Kuhn	Wray	Houston	Vermeulen	Andrews
March 14	No. 20 Auburn [SEC]	Applegate	Falcon	Langoni	Santos	Supak	McCasland	Kuhn	Houston	Andrews
March 14	No. 20 Auburn [SEC]	Applegate	Falcon	Langoni	Santos	Supak	McCasland	Russell	Kuhn	Andrews
March 16	Mississippi State [SEC]	Applegate	Blades	Langoni	Falcon	Supak	McCasland	Wray	Russell	Pizer
March 17	Mississippi State [SEC]	Applegate	Blades	Langoni	Falcon	Supak	McCasland	Wray	Houston	Pizer
March 18	Mississippi State [SEC]	Applegate	Blades	Langoni	Falcon	Supak	Alcaraz	Houston	Wray	Pizer
March 20	Georgia Tech	Blades	Andrews	Langoni	Supak	Applegate	Houston	Alcaraz	Wray	Pizer
March 23	at South Carolina [SEC]	Andrews	Blades	Langoni	Santos	Falcon	Applegate	Wray	Russell	Supak
March 24	at South Carolina [SEC]	Andrews	Blades	Langoni	Santos	Falcon	Applegate	Houston	Wray	Supak
March 25	at South Carolina [SEC]	Andrews	Blades	Langoni	Santos	Falcon	Applegate	Houston	Wray	Supak
March 28	at McNeese State	Andrews	Blades	Langoni	Santos	Falcon	Applegate	Houston	Wray	Supak
March 30	Arkansas [SEC]	Andrews	Blades	Langoni	Santos	Falcon	Applegate	Wray	Russell	Kuhn
March 31	Arkansas [SEC]	Andrews	Blades	Langoni	Santos	Falcon	Applegate	Houston	Wray	Kuhn
April 1	Arkansas [SEC]	Andrews	Blades	Langoni	Santos	Falcon	Applegate	Houston	Wray	Kuhn
April 4	Nicholls State	Andrews	Heyward	Langoni	Santos	Applegate	Kuhn	McCasland	Russell	Alcaraz
April 6	at No. 2 Alabama [SEC]	Andrews	Blades	Langoni	Santos	Falcon	Applegate	Houston	Wray	Kuhn
April 7	at No. 2 Alabama [SEC]	Andrews	Blades	Langoni	Santos	Falcon	Applegate	Wray	Russell	Supak
April 8	at No. 2 Alabama [SEC]	Andrews	Blades	Langoni	Santos	Falcon	Applegate	Wray	Russell	Supak
April 13	at No. 10 Tennessee [SEC]	Andrews	Blades	Langoni	Santos	Falcon	Applegate	Wray	Russell	Kuhn
April 14	at No. 10 Tennessee [SEC]	Andrews	Blades	Langoni	Santos	Falcon	Applegate	Houston	Wray	Pizer
April 15	at No. 10 Tennessee [SEC]	Andrews	Blades	Langoni	Santos	Falcon	Applegate	Wray	Russell	Kuhn

All home games are bolded and played at Tiger Park; Rankings reflect NFCA and USA Softball Top 25 polls on day of game; [1] Tiger Classic [Tiger Park]; [2] Louisville Slugger Desert Classic [Las Vegas, Nev.]; [3] Tiger Invitational [Tiger Park]; [4] The Preview [Norman/Oklahoma City/Stillwater, Okla.]; [5] Purple & Gold Challenge [Baton Rouge]; [6] SEC Tournament [Tuscaloosa, Ala.].

DATE	OPPONENT	P	C	1B	2B	SS	3B	LF	CF	RF	DP
Feb. 10	Penn State [1]	Mack	Russell	Kuhn	Falcon	Santos	Wray	Langoni	Heyward	Applegate	McCasland
Feb. 11	No. 15 Michigan [1]	Mack	Russell	Kuhn	Falcon	Santos	Wray	Langoni	Heyward	Applegate	McCasland
Feb. 11	Penn State [1]	Fico	Houston	Kuhn	Alcaraz	Santos	Wray	Langoni	Heyward	Applegate	Blades
Feb. 12	Louisiana Tech [1]	Fico	Russell	Kuhn	Alcaraz	Falcon	McCasland	Langoni	Heyward	Applegate	Santos
Feb. 18	vs. DePaul [2]	Fico	Russell	Kuhn	Falcon	Santos	Wray	Langoni	Heyward	Applegate	McCasland
Feb. 18	vs. Cal State Northridge [2]	Mack	Houston	Pizer	Alcaraz	Falcon	Wray	Langoni	Heyward	Applegate	Santos
Feb. 19	vs. No. 3 California [2]	Mack	Russell	Kuhn	Falcon	Santos	Wray	Langoni	Heyward	Applegate	McCasland
Feb. 19	vs. Utah State [2]	Fico	Houston	Supak	Falcon	Santos	Wray	Langoni	Heyward	Applegate	Andrews
Feb. 21	Southeastern Louisiana	Mack	Russell	Kuhn	Alcaraz	Falcon	Wray	Langoni	Heyward	Applegate	McCasland
Feb. 25	South Alabama [3]	Mack	Houston	Supak	Alcaraz	Santos	Wray	Langoni	Heyward	Applegate	Trosclair
Feb. 25	McNeese State [3]	Fico	Russell	Supak	Alcaraz	Santos	Wray	Langoni	Heyward	Applegate	Trosclair
Feb. 26	South Alabama [3]	Fico	Russell	Supak	Alcaraz	Santos	Wray	Langoni	Heyward	Applegate	Trosclair
Feb. 26	Alcorn State [3]	Patterson	Houston	Pizer	Alcaraz	Santos	Wray	Langoni	Heyward	Andrews	Kuhn
March 2	at No. 8 Oklahoma [4]	Mack	Houston	Supak	Trosclair	Santos	Wray	Langoni	Andrews	Applegate	Alcaraz
March 3	vs. No. 23 Oklahoma State [4]	Mack	Houston	Supak	Alcaraz	Santos	McCasland	Langoni	Andrews	Applegate	Trosclair
March 3	vs. No. 8 Oklahoma [4]	Fico	Russell	Supak	Alcaraz	Santos	McCasland	Langoni	Andrews	Applegate	Trosclair
March 4	at No. 23 Oklahoma State [4]	Fico	Russell	Supak	Alcaraz	Santos	McCasland	Langoni	Andrews	Applegate	Trosclair
March 7	at Nicholls State	Fico	Houston	Kuhn	Trosclair	Supak	McCasland	Langoni	Andrews	Applegate	Falcon
March 9	Mississippi Valley State [5]	Patterson	Russell	Supak	Alcaraz	Santos	McCasland	Langoni	Boulet	Applegate	Falcon
March 9	Troy [5]	Mack	Houston	Supak	Falcon	Santos	McCasland	Langoni	Andrews	Applegate	Blades
March 10	Troy [5]	Fico	Russell	Supak	Falcon	Santos	McCasland	Langoni	Andrews	Applegate	Pizer
March 10	Mississippi Valley State [5]	Mack	Houston	Kuhn	Falcon	Supak	Wray	Langoni	Andrews	Applegate	Vermeulen
March 14	No. 20 Auburn [SEC]	Mack	Houston	Kuhn	Falcon	Santos	McCasland	Langoni	Andrews	Applegate	Supak
March 14	No. 20 Auburn [SEC]	Fico	Russell	Kuhn	Falcon	Santos	McCasland	Langoni	Andrews	Applegate	Supak
March 16	Mississippi State [SEC]	Fico	Russell	Pizer	Falcon	Supak	Wray	Langoni	Blades	Applegate	McCasland
March 17	Mississippi State [SEC]	Mack	Houston	Pizer	Falcon	Supak	Wray	Langoni	Blades	Applegate	McCasland
March 18	Mississippi State [SEC]	Fico	Houston	Pizer	Alcaraz	Falcon	Wray	Langoni	Blades	Applegate	Supak
March 20	Georgia Tech	Mack	Houston	Pizer	Alcaraz	Supak	Wray	Langoni	Andrews	Applegate	Blades
March 23	at South Carolina [SEC]	Fico	Russell	Supak	Falcon	Santos	Wray	Langoni	Andrews	Applegate	Blades
March 24	at South Carolina [SEC]	Mack	Houston	Supak	Falcon	Santos	Wray	Langoni	Andrews	Applegate	Blades
March 25	at South Carolina [SEC]	Fico	Houston	Supak	Falcon	Santos	Wray	Langoni	Andrews	Applegate	Blades
March 28	at McNeese State	Mack	Houston	Supak	Falcon	Santos	Wray	Langoni	Andrews	Applegate	Blades
March 30	Arkansas [SEC]	Fico	Russell	Kuhn	Falcon	Santos	Wray	Langoni	Andrews	Applegate	Blades
March 31	Arkansas [SEC]	Mack	Houston	Kuhn	Falcon	Santos	Wray	Langoni	Andrews	Applegate	Blades
April 1	Arkansas [SEC]	Fico	Houston	Kuhn	Falcon	Santos	Wray	Langoni	Andrews	Applegate	Blades
April 4	Nicholls State	Patterson	Russell	Kuhn	Alcaraz	Santos	McCasland	Langoni	Heyward	Andrews	Applegate
April 6	at No. 2 Alabama [SEC]	Mack	Houston	Kuhn	Falcon	Santos	Wray	Langoni	Andrews	Applegate	Blades
April 7	at No. 2 Alabama [SEC]	Fico	Russell	Supak	Falcon	Santos	Wray	Langoni	Andrews	Applegate	Blades
April 8	at No. 2 Alabama [SEC]	Mack	Russell	Supak	Falcon	Santos	Wray	Langoni	Andrews	Applegate	Blades
April 13	at No. 10 Tennessee [SEC]	Fico	Russell	Kuhn	Falcon	Santos	Wray	Langoni	Andrews	Blades	Applegate
April 14	at No. 10 Tennessee [SEC]	Mack	Houston	Pizer	Falcon	Santos	Wray	Langoni	Andrews	Blades	Applegate
April 15	at No. 10 Tennessee [SEC]	Fico	Russell	Kuhn	Falcon	Santos	Wray	Langoni	Andrews	Blades	Applegate

All home games are bolded and played at Tiger Park; Rankings reflect NFCA and USA Softball Top 25 polls on day of game; [1] Tiger Classic [Tiger Park]; [2] Louisville Slugger Desert Classic [Las Vegas, Nev.]; [3] Tiger Invitational [Tiger Park], [4] The Preview [Norman/Oklahoma City/Stillwater, Okla.]; [5] Purple & Gold Challenge [Baton Rouge]; [6] SEC Tournament [Tuscaloosa, Ala.].



#00 ASHLEY LANGONI • SR. • OF • R-R • PUEBLO, COLORADO

SEASON HIGHS

Runs	4 [2x]	at South Carolina	03/25/12
Hits	3	at No. 23 Oklahoma State	03/04/12
RBIs	3 [4x]	Mississippi Valley State	03/10/12
Hit Streak	4		03/30/12-04/04/12

CAREER HIGHS

Runs	4 [2x]	at South Carolina	03/25/12
Hits	3 [6x]	at No. 23 Oklahoma State	03/04/12
RBIs	5	at Arkansas	04/01/11
Hit Streak	7		03/13/11-04/01/11



#1 RIKKI ALCARAZ • FR. • INF • L-R • ORLAND PARK, ILLINOIS

SEASON HIGHS

Runs	2 [3x]	Mississippi State	03/18/12
Hits	2	South Alabama	02/25/12
RBIs	2	Louisiana Tech	02/12/12
Hit Streak	5		02/21/12-02/26/12

CAREER HIGHS

Runs	2 [3x]	Mississippi State	03/18/12
Hits	2	South Alabama	02/25/12
RBIs	2	Louisiana Tech	02/12/12
Hit Streak	5		02/21/12-02/26/12



#2 JULIANA SANTOS • SR. • INF • R-R • NEWMAN, CALIFORNIA

SEASON HIGHS

Runs	2 [3x]	Troy	03/09/12
Hits	3 [2x]	at South Carolina	03/25/12
RBIs	3	at South Carolina	03/25/12
Hit Streak	4 [3x]		03/30/12-04/04/12

CAREER HIGHS

Runs	2 [14x]	Troy	03/09/12
Hits	5	at Arkansas	04/02/11
RBIs	5	Kentucky	03/08/09
Hit Streak	6		04/16/11-04/23/11



#3 CASSIE TROSCLAIR • SR. • INF • L-R • NEW ORLEANS, LA.

SEASON HIGHS

Runs	1 [2x]	Nicholls State	04/04/12
Hits	1 [4x]	at South Carolina	03/25/12
RBIs	2	vs. No. 23 Oklahoma State	03/03/12
Hit Streak	1 [4x]		03/25/12

CAREER HIGHS

Runs	2 [3x]	vs. Sacred Heart	05/21/11
Hits	3 [2x]	vs. Sacred Heart	05/21/11
RBIs	2 [2x]	vs. No. 23 Oklahoma State	03/03/12
Hit Streak	3		04/06/11-04/09/11



#4 MORGAN RUSSELL • SR. • C • R-R • EDMOND, OKLAHOMA

SEASON HIGHS

Runs		
1 [3x]	at South Carolina	03/23/12
Hits		
2 [2x]	McNeese State	02/25/12
RBIs		
2 [2x]	McNeese State	02/25/12
Hit Streak		
2 [2x]		04/13/12-04/15/12

CAREER HIGHS

Runs		
2 [2x]	Purdue	02/13/11
Hits		
3 [2x]	South Carolina	05/07/11
RBIs		
3	UAB	02/22/09
Hit Streak		
5		02/11/11-02/18/11



#6 A.J. ANDREWS • FR. • OF • L-R • OLDSMAR, FLORIDA

SEASON HIGHS

Runs		
2 [3x]	at South Carolina	03/24/12
Hits		
2 [6x]	Arkansas	03/30/12
RBIs		
3	at South Carolina	03/25/12
Hit Streak		
2 [6x]		04/08/12-04/13/12

CAREER HIGHS

Runs		
2 [3x]	at South Carolina	03/24/12
Hits		
2 [6x]	Arkansas	03/30/12
RBIs		
3	at South Carolina	03/25/12
Hit Streak		
2 [6x]		04/08/12-04/13/12



#9 ALEX BOULET • SO. • OF • L-L • CROWLEY, LOUISIANA

SEASON HIGHS

Runs		
1 [6x]	at No. 10 Tennessee	04/14/12
Hits		
NA		
RBIs		
NA		
Hit Streak		
NA		

CAREER HIGHS

Runs		
2 [2x]	Nicholls State	04/06/11
Hits		
2	Nicholls State	04/06/11
RBIs		
1 [3x]	vs. Sacred Heart	05/22/11
Hit Streak		
2		04/23/11-04/27/11



#10 ASHLEY APPLGATE • SR. • OF • L-R • MODESTO, CALIFORNIA

SEASON HIGHS

Runs		
2 [2x]	Mississippi State	03/16/12
Hits		
2 [3x]	Arkansas	04/01/12
RBIs		
2	Arkansas	04/01/12
Hit Streak		
6		03/25/12-04/04/12

CAREER HIGHS

Runs		
2 [10x]	Mississippi State	03/16/12
Hits		
4	Kentucky	03/07/09
RBIs		
3	at Southeastern Louisiana	03/24/10
Hit Streak		
6 [4x]		03/25/12-04/04/12



#11 DYLAN SUPAK • FR. • UTL • R-R • LAGRANGE, TEXAS

SEASON HIGHS

Runs	2	at Nicholls State	03/07/12
Hits	2 [5x]	at South Carolina	03/23/12
RBIs	2 [5x]	Mississippi State	03/16/12
Hit Streak	3		03/07/12-03/10/12

CAREER HIGHS

Runs	2	at Nicholls State	03/07/12
Hits	2 [5x]	at South Carolina	03/23/12
RBIs	2 [5x]	Mississippi State	03/16/12
Hit Streak	3		03/07/12-03/10/12



#12 HEIDI PIZER • SR. • INF • R-R • TIGARD, OREGON

SEASON HIGHS

Runs	2	Mississippi State	03/16/12
Hits	1 [4x]	Mississippi State	03/16/12
RBIs	2	Mississippi Valley State	03/10/12
Hit Streak	4		03/07/12-03/16/12

CAREER HIGHS

Runs	2 [2x]	Mississippi State	03/16/12
Hits	2 [2x]	Louisiana Tech	02/13/11
RBIs	3	at Nicholls State	04/14/10
Hit Streak	4		03/07/12-03/16/12



#13 KATIE GUILLORY • SR. • OF • L-L • LAFAYETTE, LOUISIANA

SEASON HIGHS

Runs	NA		
Hits	NA		
RBIs	NA		
Hit Streak	NA		

CAREER HIGHS

Runs	1 [21x]	vs. Sacred Heart	05/21/11
Hits	1 [3x]	Nicholls State	03/04/09
RBIs	1	UAB	02/21/09
Hit Streak	2		02/25/09-03/04/09



#16 LAUREN HOUSTON • JR. • C • R-R • YOUNGVILLE, LOUISIANA

SEASON HIGHS

Runs	2	Mississippi Valley State	03/10/12
Hits	2 [2x]	Mississippi State	03/18/12
RBIs	2	vs. Utah State	02/19/12
Hit Streak	2 [2x]		03/24/12-03/25/12

CAREER HIGHS

Runs	2	Mississippi Valley State	03/10/12
Hits	2 [8x]	Mississippi State	03/18/12
RBIs	3 [2x]	vs. Nicholls State	02/19/11
Hit Streak	3 [2x]		05/06/11-05/08/11



#18 TAMMY WRAY • SO. • INF • R-R • SOMERS, NEW YORK

SEASON HIGHS

Runs		
2	vs. Cal State Northridge	02/18/12
Hits		
2	Southeastern Louisiana	02/21/12
RBIs		
2	vs. Utah State	02/19/12
Hit Streak		
3		02/19/12-02/21/12

CAREER HIGHS

Runs		
2 [6x]	vs. Cal State Northridge	02/18/12
Hits		
3	Southeastern Louisiana	02/16/11
RBIs		
3 [5x]	vs. Sacred Heart	05/21/11
Hit Streak		
6 [2x]		03/20/11-04/06/11



#23 JACEE BLADES • SO. • OF • L-R • BATON ROUGE, LOUISIANA

SEASON HIGHS

Runs		
1 [9x]	Arkansas	04/01/12
Hits		
2 [2x]	at South Carolina	03/24/12
RBIs		
2	at South Carolina	03/23/12
Hit Streak		
3 [2x]		03/28/12-03/31/12

CAREER HIGHS

Runs		
2	vs. Nicholls State	02/19/11
Hits		
3	vs. Nicholls State	02/19/11
RBIs		
2	at South Carolina	03/23/12
Hit Streak		
7		04/22/11-05/01/11



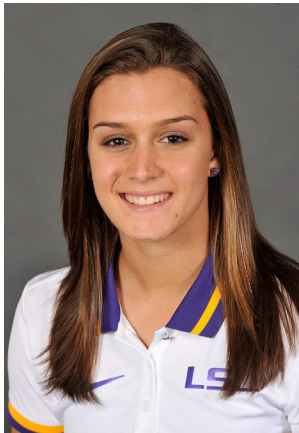
#25 SIMONE HEYWARD • SO. • OF • R-R • SACRAMENTO, CALIFORNIA

SEASON HIGHS

Runs		
2	Louisiana Tech	02/12/12
Hits		
2	Louisiana Tech	02/12/12
RBIs		
1 [3x]	vs. Utah State	02/19/12
Hit Streak		
3		02/21/12-02/25/12

CAREER HIGHS

Runs		
4	Louisiana Tech	02/11/11
Hits		
2 [12x]	Louisiana Tech	02/12/12
RBIs		
1 [12x]	vs. Utah State	02/19/12
Hit Streak		
5		05/20/11-02/11/12



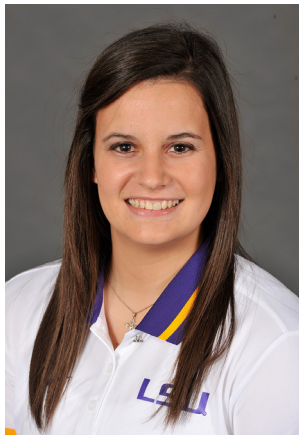
#28 TAMMY VERMEULEN • FR. • OF • L-R • PATCHOGUE, NEW YORK

SEASON HIGHS

Runs		
2	Mississippi Valley State	03/10/12
Hits		
1 [2x]	Mississippi Valley State	03/10/12
RBIs		
2	vs. Cal State Northridge	02/19/12
Hit Streak		
2		02/19/12-03/10/12

CAREER HIGHS

Runs		
2	Mississippi Valley State	03/10/12
Hits		
1 [2x]	Mississippi Valley State	03/10/12
RBIs		
2	vs. Cal State Northridge	02/19/12
Hit Streak		
2		02/19/12-03/10/12



#32 ALLISON FALCON • SO. • INF • R-R • DONALDSONVILLE, LOUISIANA

SEASON HIGHS

Runs		
2 [3x]	at Nicholls State	03/07/12
Hits		
3	vs. Cal State Northridge	02/18/12
RBIs		
2 [3x]	Mississippi State	03/17/12
Hit Streak		
6 [2x]		03/28/12-04/07/12

CAREER HIGHS

Runs		
3	Nicholls State	03/23/10
Hits		
3 [2x]	vs. Cal State Northridge	02/18/11
RBIs		
3	Purdue	02/13/11
Hit Streak		
6 [2x]		03/28/12-04/07/12



#33 KAILEY MCCASLAND • FR. • UTL • R-R • SAN CLEMENTE, CALIFORNIA

SEASON HIGHS

Runs		
2	vs. No. 23 Oklahoma State	03/03/12
Hits		
2 [3x]	Nicholls State	04/04/12
RBIs		
3	vs. No. 23 Oklahoma State	03/03/12
Hit Streak		
3		03/07/12-03/09/12

CAREER HIGHS

Runs		
2	vs. No. 23 Oklahoma State	03/03/12
Hits		
2 [3x]	Nicholls State	04/04/12
RBIs		
3	vs. No. 23 Oklahoma State	03/03/12
Hit Streak		
3		03/07/12-03/09/12



#47 ASHLEIGH KUHN • SO. • UTL • R-R • NEDERLAND, TEXAS

SEASON HIGHS

Runs		
1 [3x]	Mississippi State	03/18/12
Hits		
2 [3x]	Nicholls State	04/04/12
RBIs		
4	Mississippi Valley State	03/10/12
Hit Streak		
3		03/02/10-03/12/12

CAREER HIGHS

Runs		
1 [3x]	Mississippi State	03/18/12
Hits		
2 [3x]	Nicholls State	04/04/12
RBIs		
4	Mississippi Valley State	03/10/12
Hit Streak		
3		03/02/10-03/12/12



#20 MEGHAN PATTERSON • SO. • P • R-R • DESTREHAN, LOUISIANA

SEASON HIGHS

Runs			
8	vs. No. 3 California		02/19/12
Hits			
6 [2x]	Nicholls State		04/04/12
Walks			
5	vs. No. 3 California		02/19/12
Strikeouts			
13	Alcorn State		02/26/12

CAREER HIGHS

Runs			
8	vs. No. 3 California		02/19/12
Hits			
10	vs. No. 14 California		02/26/11
Walks			
5	vs. No. 3 California		02/19/12
Strikeouts			
13	Alcorn State		02/26/12



#37 RACHELE FICO • JR. • P • R-R • OXFORD, CONNECTICUT

SEASON HIGHS

Runs			
7	Mississippi State		03/16/12
Hits			
12	at No. 23 Oklahoma State		03/04/12
Walks			
6 [2x]	at No. 10 Tennessee		04/13/12
Strikeouts			
10 [3x]	at South Carolina		03/23/12

CAREER HIGHS

Runs			
7 [2x]	Mississippi State		03/16/12
Hits			
13	No. 24 Kentucky		03/18/11
Walks			
6 [5x]	at No. 10 Tennessee		04/13/12
Strikeouts			
18	vs. Syracuse		05/20/11



#44 BRITTANY MACK • SR. • P • R-R • ROUND ROCK, TEXAS

SEASON HIGHS

Runs			
7	at No. 8 Oklahoma		03/02/12
Hits			
11	No. 15 Michigan		02/11/12
Walks			
6	vs. No. 23 Oklahoma State		03/03/12
Strikeouts			
13	Penn State		02/10/12

CAREER HIGHS

Runs			
7	at No. 8 Oklahoma		03/02/12
Hits			
12	Mississippi State		04/10/10
Walks			
8	No. 1 Alabama		04/08/11
Strikeouts			
14	No. 1 Alabama		04/08/11