



2012 LSU Softball



LSU, Louisiana Tech, Michigan, Penn State
February 10-12 • Tiger Park • Baton Rouge

Live Stats: LSUsports.net • Radio: KLSU [Mich. Only]
Live Updates: www.Facebook.com/LSUsoftball



SETTING THE SCENE

- ▶ No. 22 LSU starts the 2012 season at home as Louisiana Tech, No. 15 Michigan and Penn State visit the capitol city for the Tiger Classic. It marks the first time since 2007-2008 that the Tigers have opened back-to-back seasons at home.
- ▶ LSU has won 22 consecutive opening weekend home games dating back to the 2004 season.
- ▶ LSU is 13-2 in season openers and has won five of its last six by an impressive 47-8 margin, including a pair of double digit shutouts over Stephen F. Austin (2006) and St. John's (2008).
- ▶ Overall, LSU has outscored its opponents by a 138-16 tally in openers and posted nine shutouts. The Tigers' two setbacks came against Illinois (2005) and North Carolina (2010).
- ▶ Going back to the 2006 season, LSU has been ranked in 86 of the last 88 editions of both the *USA Today/NFCA* and *ESPN/USA Softball* Top 25 polls. The Tigers are one of six SEC teams to be ranked and check in at No. 22 and No. 20, respectively.

SPORTS INFORMATION

Associate AD/SID	Michael Bonnette
Senior Associate SID	Kent Lowe
Senior Associate SID	Bill Franques
Associate SID (Softball)	Matt Dunaway
Dunaway's Email	mdunaway@lsu.edu
Dunaway's Office Phone	(225) 578-1869
Dunaway's Cell Phone	(225) 226-5034
Associate SID	Bill Martin
Associate SID	Will Stafford
Associate SID	Jake Terry
Student SIDs	Kevin Alvarez, Ashley Amoss
Student SIDs	Caroline Downer, Brooke Hochstetler
Student SIDs	Melani Johnson, Seth Medvin
Student SIDs	Jake Most, Jacie Scott
Publications Director	Jason Feirman
Graphics Design Coordinators	Krystal Bennett, Courtney Wilburn
Staff Photographer	Steve Franz
Photography Assistant	Chris Parent, Hilary Scheinuk
Administrative Specialist	Pam LeBlanc

WHAT'S INSIDE

Introduction/Media Information	1
Schedule/Results	1
The Last Time/Inning-by-Inning	2
A Look Back: LSU vs. Louisiana Tech & Michigan	3-4
Statistics	5-10
Player Career/Season Highs	11-16

WHAT'S NEXT

- ▶ LSU finishes its five-game homestand to open the 2012 season Wednesday against Florida State. First pitch is slated for 6 p.m. from Tiger Park.

SCHEDULE/RESULTS (0-0, 0-0 SEC)

FEBRUARY [0-0]

10	Penn State [1]	6 p.m.
11	No. 15/16 Michigan [1]	12:30 p.m.
11	Penn State [1]	3 p.m.
12	Louisiana Tech [1]	12:30 p.m.
15	RV/RV Florida State	6 p.m.
18	vs. RV/RV DePaul [2]	11 a.m.
18	vs. Cal State Northridge [2]	1:15 p.m.
19	vs. No. 4/3 California	1:15 p.m.
19	vs. Utah State	3:30 p.m.
21	Southeastern Louisiana	6 p.m.
25	South Alabama [3]	12:30 p.m.
25	McNeese State [3]	3 p.m.
26	South Alabama [3]	3 p.m.
26	Alcorn State [3]	5:30 p.m.

MARCH [0-0]

2	at No. 5/6 Oklahoma [4]	6 p.m.
3	vs. No. 11/16 Oklahoma State [4]	11 a.m.
3	vs. No. 5/6 Oklahoma [4]	4 p.m.
4	at No. 11/16 Oklahoma State [4]	12 p.m.
7	at Nicholls State	6 p.m.
9	Mississippi Valley State [5]	5 p.m.
9	Troy [5]	7:30 p.m.
10	Troy [5]	1:30 p.m.
10	Mississippi Valley State [5]	4 p.m.
14	NR/RV Auburn [SEC]	5 p.m.
14	NR/RV Auburn [SEC]	7:30 p.m.
16	Mississippi State [SEC]	6 p.m.
17	Mississippi State [SEC]	4 p.m.
18	Mississippi State [SEC]	1 p.m.
21	RV/No. 23 Georgia Tech	6 p.m.
23	at South Carolina [SEC]	5 p.m.
24	at South Carolina [SEC]	1 p.m.
25	at South Carolina [SEC]	12 p.m.
28	at McNeese State	6 p.m.
30	Arkansas [SEC]	6 p.m.
31	Arkansas [SEC]	4 p.m.

APRIL [0-0]

1	Arkansas [SEC]	1 p.m.
4	Nicholls State	6 p.m.
6	at No. 3/2 Alabama [SEC]	6:30 p.m.
7	at No. 3/2 Alabama [SEC]	1:30 p.m.
8	at No. 3/2 Alabama [SEC]	1:30 p.m.
11	at Southeastern Louisiana	6 p.m.
13	at No. 14/9 Tennessee [SEC]	5 p.m.
14	at No. 14/9 Tennessee [SEC]	1 p.m.
15	at No. 14/9 Tennessee [SEC]	11:30 a.m.
18	McNeese State	6 p.m.
20	Ole Miss [SEC]	6 p.m.
21	Ole Miss [SEC]	6 p.m.
22	Ole Miss [SEC]	1 p.m.
24	at No. 2/4 Florida [SEC]	4 p.m.
24	at No. 2/4 Florida [SEC]	6:30 p.m.
27	No. 10/12 Georgia [SEC]	6 p.m.
28	No. 10/12 Georgia [SEC]	4 p.m.
29	No. 10/12 Georgia [SEC]	1 p.m.

MAY/JUNE [0-0]

4	at No. 13/18 Kentucky [SEC]	5 p.m.
5	at No. 13/18 Kentucky [SEC]	12 p.m.
6	at No. 13/18 Kentucky [SEC]	12 p.m.
10-12	SEC Tournament [6]	TBA
17-20	NCAA Regionals	TBA
24-27	NCAA Super Regionals	TBA
31-37	Women's College World Series	TBA

All game times are Central and subject to change; Rankings reflect NFCA and USA Softball Top 25 polls on day of game; Home games are bolded and played at Tiger Park; [SEC] Southeastern Conference game; [1] Tiger Classic [Tiger Park]; [2] Louisville Slugger Desert Classic [Las Vegas, Nev.]; [3] Tiger Invitational [Tiger Park]; [4] The Preview [Norman/Oklahoma City/Stillwater, Okla.]; [5] Purple & Gold Challenge [Baton Rouge]; [6] SEC Tournament [Tuscaloosa, Ala.]; [FSN] Fox Sports Network; [CST] Cox Sports Television; [ESPN2, ESPN] SEC on ESPN Family of Networks.

MEDIA INFORMATION

SPORTS INFORMATION

LSU Associate Sports Information Director Matt Dunaway handles the media relations duties for the Tiger softball team. Dunaway can be reached at his office (225) 578-1869, on his cell (225) 226-5034 or by e-mail at mdunaway@lsu.edu.

The Tiger Park press box phone number is (225) 578-0154 and will be available two hours prior to first pitch on gamedays.

PRACTICE TIMES/INTERVIEWS

LSU practices at Tiger Park and team sessions generally begin around 2:15 p.m. On most days, head coach Beth Torina and players are available for interviews prior to the team practice session.

Members of the media who wish to cover practice should contact SID Matt Dunaway for the latest practice times. During the season, the Tigers usually take Monday's off.

Office and phone interviews may be arranged on special occasions. Her office is located on the fourth floor of the Athletic Administration Building.

All interview requests must be made at least 24 hours in advance with Dunaway.

WWW.LSUSPORTS.NET

Information about the Tiger softball team, including player bios, game recaps and notes packets are available online at the Official Website of LSU Athletics, www.LSUsports.net

LSU softball games that are broadcasted on the radio can be heard in the Geaux Zone on LSUsports.net in addition to live streaming video for all home games broadcast on the radio that are not being televised by a national network as part of the SEC on ESPN package.

Live statistics for all games will be carried on LSUsports.net.

MEDIA.LSUSPORTS.NET

Media can now access images for all LSU athletics teams, including action shots, head shots and logos. To gain access to the high-resolution pictures, e-mail Matt Dunaway.

You will be assigned a user name and a password. This service is for media use only. Resale of these images is strictly prohibited.

THE LAST TIME A TIGER ...

Scored three runs in a game:	Ashley Langoni vs. No. 5 Florida, 05/14/10
Scored four runs in a game:	Simone Heyward vs. Louisiana Tech, 02/11/11
Had four hits in a game:	Juliana Santos vs. Louisiana Tech, 02/13/11
Had five hits in a game:	Juliana Santos at Arkansas, 04/02/11
Had five RBIs in a game:	Ashley Langoni at Arkansas, 04/01/11
Had six RBIs in a game:	Vanessa Soto vs. Centenary, 02/10/07
Had seven RBIs in a game:	Stephanie Hill vs. Nicholls State, 04/01/04
Had two doubles in a game:	Juliana Santos at Ole Miss, 04/23/11
Had three doubles in a game:	Tessa Lynam vs. Jackson State, 02/28/03
Had two triples in a game:	Leslie Klein vs. Alcorn State, 02/20/04
Had two home runs in a game:	Anissa Young vs. Fordham, 02/26/10
Hit a grand slam:	Anissa Young [1st] & Ashley Langoni [2nd] at Arizona State, 05/16/09
Lead off game with home run:	Kirsten Shortridge at Hawai'i, 02/07/09
Lead off inning with home run:	Anissa Young vs. No. 1 Alabama [14th], 04/08/11
Hit an inside-the-park home run:	Shannon Stein vs. Auburn, 05/08/08
Hit a walk-off home run to win regulation game:	Kirsten Shortridge vs. Kentucky, 05/13/10
Hit a walk-off home run to win an extra inning game:	Anissa Young vs. No. 1 Alabama [10th], 04/09/10
Had eight total bases in a game:	Ashley Langoni vs. Syracuse, 05/21/11
Had nine total bases in a game:	Kristen Hobbs vs. Missouri, 02/10/07
Had 10 total bases in a game:	Anissa Young vs. Southeastern Louisiana, 02/24/10
Had 13 total bases in a game:	Ashlee Ducote at South Carolina [Gm 2], 04/14/00
Drew three walks in a game:	Tammy Wray at Mississippi State, 05/01/11
Drew four walks in a game:	Rachel Mitchell vs. Missouri State, 02/16/07
Drew two intentional walks in a game:	Killian Roessner vs. Troy, 03/11/08
Drew three intentional walks in a game:	Stephanie Hill at Ole Miss [Gm 1], 04/17/04
Hit by pitch twice in a game:	Lauren Houston at Mississippi State, 04/30/11
Struck out three times in a game:	Simone Heyward vs. Syracuse, 05/20/11
Struck out four times in a game:	Alex Boulet vs. No. 1 Alabama, 04/08/11
Struck out five times in a game:	Ashley Lewis vs. Southern Miss, 05/20/00
Had two sacrifice hits in a game:	Ashley Langoni vs. No. 1 Alabama, 04/08/11
Had three sacrifice hits in a game:	Tara Asbill at Alabama [Gm 1], 05/05/00
Had two sacrifice flies in a game:	Juliana Santos at Mississippi State, 04/28/11
Had two stolen bases in a game:	Anissa Young vs. Sacred Heart, 05/21/11
Had three stolen bases in a game:	Juliana Santos vs. Louisiana Tech, 02/13/11
Had four stolen bases in a game:	Cassie Trosclair vs. Sacred Heart, 05/21/11
Seven-inning complete-game shutout:	Brittany Mack vs. Syracuse, 05/21/11
Extra-inning complete-game shutout:	Brittany Mack vs. Hofstra [9 IP], 03/04/11
Seven-inning complete-game one-hitter:	Brittany Mack at Ole Miss, 04/24/11
Tossed a perfect game:	Rachele Fico vs. Southeastern Louisiana [5 IP], 02/16/11
Tossed a no-hitter:	Meghan Patterson vs. Southern [5 IP], 02/18/11
Seven-inning no-hitter:	Emily Turner at Arkansas [Gm 2], 04/21/07
Recorded 12 strikeouts in a game:	Brittany Mack vs. No. 6 Tennessee, 04/15/11
Recorded 13 strikeouts in a game:	Rachele Fico vs. Purdue, 02/12/11
Recorded 14 strikeouts in a game:	Brittany Mack vs. No. 1 Alabama, 04/08/11
Recorded 15 strikeouts in a game:	Dani Hofer vs. Auburn, 03/21/08
Recorded 16 strikeouts in a game:	Dani Hofer vs. South Florida, 03/16/08
Recorded 17 strikeouts in a game:	Kristin Schmidt vs. Ole Miss [Gm 1], 04/18/03
Recorded 18 strikeouts in a game:	Rachele Fico vs. Syracuse, 05/20/11
Recorded 19 strikeouts in a game:	Britni Sneed vs. Oklahoma, 05/26/01
Pitched 10+ innings:	Rachele Fico vs. No. 1 Alabama, 04/11/11
Pitched 11+ innings:	Rachele Fico vs. Syracuse, 05/20/11
Pitched 13+ innings:	Brittany Mack vs. No. 1 Alabama, 04/10/11
Had 17 putouts:	Leigh Ann Danos vs. South Carolina [Gm 1], 03/13/04
Had 18 putouts:	Morgan Russell vs. Syracuse, 05/20/11
Had 19 putouts:	Jennifer Schuelke vs. Oklahoma, 05/26/01
Had six assists:	Cassie Trosclair vs. No. 18 Texas A&M, 05/22/11
Had seven assists:	Juliana Santos at Kentucky [Gm. 2], 04/25/10
Had eight assists:	Tara Asbill vs. South Carolina, 05/14/00
Had two errors:	Brittany Mack at Mississippi State, 04/29/11
Had three errors:	Emily Turner at Arkansas [Gm 2], 04/26/06
Had four errors:	Andrea Smith vs. Arizona, 05/26/06

INNING-BY-INNING

SCORE BY INNINGS	1	2	3	4	5	6	7	8	9	10+	TOTALS
LSU	34	24	66	29	34	34	16	0	3	3	243
Opponents	14	10	34	32	16	18	26	2	0	3	157

THE LAST TIME LSU ...

Scored 10 or more runs:	vs. Sacred Heart [10], 05/20/11
Scored 15 or more runs:	at Nicholls State [15], 04/14/10
Scored 20 or more runs:	vs. Grambling State [20], 02/15/06
Allowed 10 or more runs:	No. 6 Tennessee [11], 04/16/11
Allowed 15 or more runs:	Never
Recorded 10 or more hits:	vs. Sacred Heart[12], 05/20/11
Recorded 15 or more hits:	at Southeastern Louisiana [15], 03/24/10
Recorded 20 or more hits:	vs. Alcorn State [21], 02/20/04
Drove home 10 or more RBIs:	Louisiana Tech [10], 02/13/11
Hit six or more doubles:	vs. Grambling State [8], 02/15/06
Hit three or more triples:	vs. Alcorn State [3], 02/20/04
Hit four or more home runs:	vs. Fordham [4], 02/26/11
Stole eight or more bases:	at Ole Miss [8], 04/22/11
Drew 10 or more walks:	vs. Memphis [10], 02/11/07
Pitched a no-hitter:	vs. Southern, 02/18/11
Pitched 15 or more strikeouts:	vs. Auburn [15], 03/21/08
Committed 4 or more errors:	vs. Fordham [4], 02/26/11
Defeated a ranked team:	at No. 25 Auburn [7-3, 1-0], 04/20/11
Defeated a top-five ranked team:	vs. No. 1 Alabama [2-1, 3-1, 2-0], 04/08-09-10/11
Lost to an unranked opponent:	vs. Syracuse [3-0], 05/20/11

2011 SEASON SERIES

NO. 19 LSU 9, LOUISIANA TECH 1 • 02/11

NO. 19 LSU 10, LOUISIANA TECH 2 • 02/13

BATON ROUGE – LSU dented the scoreboard with runs in five of the six frames highlighted by a trio of runs in the first and sixth innings.

Simone Heyward was hit-by-a-pitch to open the game. She stole second, advanced to third on a Louisiana Tech error and crossed the plate on a Anissa Young RBI-single. Later in the frame, Heidi Pizer would draw walk and Jacee Blades was hit-by-a-pitch, both with the bases loaded, to make it 3-0.

That would be more than enough run support for Rachele Fico, who was touched up for a run on three hits. She fired in 11 strikeouts to match a career-high.

The Tigers added single runs in the second, third and fourth innings. Juliana Santos slapped a RBI-single to score Heyward, who opened the second with a leadoff triple. Pizer and Ashley Langoni would tack on runs with a sacrifice fly and RBI-groundout, respectively, to extend the lead to 6-0 after four innings.

Louisiana Tech scored its lone run on a Janna Frandrup RBI-double in the third inning. Fico slammed the door on the Lady Techsters and retired nine of the last 10 batters she faced, four via the strikeout.

Cassie Trosclair and Heyward cranked back-to-back singles to start the sixth inning. Santos cleared the bases with a two-run triple. Two batters later, Young added a RBI-groundout to score Santos for the final margin of 9-1.

"I have been working really hard rehabbing and my trainers have been helping me a lot. Finally I am ready and healthy to play," Santos said. "We have depth at every position. We all have confidence in each other and it is going to be a very good season. I look forward to watching us."

BATON ROUGE – Four different Tigers provided multiple RBIs led by Lauren Houston, who turned in a 2-for-3 effort and a career-best three RBIs. Heidi Pizer, Juliana Santos and Tammy Wray connected for two RBIs apiece, while Santos notched her first career four-hit performance.

"This is a new year, a new team and we are really excited about where we are going," Houston said. "A bunch of us came out with a whole new mindset after the way our season ended last year. I know personally I have worked very hard over the summer and offseason along with the rest of my teammates. We know what we need to do to get the job done."

LSU raced out of the gates and exploded for eight runs over the first two innings. The Tigers have now dented the scoreboard during the first inning in four of their six games.

Heyward ripped a leadoff triple and scampered home on a Santos RBI-single for the 1-0 edge. Pizer and Houston capped the three-run frame with back-to-back RBI-singles with two outs.

Heyward, Santos and Langoni set the table in the second inning. With one out, Anissa Young was hit-by-a-pitch to force Heyward home before Wray smashed a two-run single through the left side to extend the lead to 6-0. Houston tacked on a sacrifice fly, and Pizer belted a RBI-double down the right field line to make it 8-0.

Louisiana Tech struck for two runs in the third inning, but LSU fired back with single runs during the fourth and fifth. Santos capped her 4-for-4 day with a RBI-single to compete the 10-2 victory.

Meghan Patterson equaled a career-high and compiled 11 Ks over her five innings of work. She allowed two runs, one earned, on three hits to improve to 2-0 for the season.

"It's a long weekend," head coach Yvette Girouard said. "Six games in three days, that's a lot of ball to play, especially when you are going to class and have to meet other obligations. I thought our pitchers were phenomenal minus a few innings. For Brittany Mack, it was very important that she finished [the first game], which she did. For Meghan Patterson to work herself out of a jam, she faced a little bit of adversity, which made her better today."



2011 LSU Softball
Louisiana Tech at #19 LSU
Feb 11, 2011 at Baton Rouge, La. (Tiger Park)



Louisiana Tech 1 (1-1)

Player	ab	r	h	rbi	bb	so	po	a	lob
Harmon, Kendra lf	3	0	0	0	2	0	0	0	0
Gambo, Christina cf	2	1	1	0	0	1	0	0	0
Wilson, Charday cf	1	0	0	0	0	1	1	1	0
Frandrup, Janna dp/p	2	0	1	1	0	1	0	1	0
Knowles, Meghan 1b	3	0	0	0	0	4	0	2	0
Geisler, Allie c	1	0	0	0	1	3	1	0	0
Allday, Rachel pr	0	0	0	0	0	0	0	0	0
Van Winkle, Tricia c	1	0	0	0	0	2	0	0	0
Goza, Molly 3b	3	0	1	0	0	2	0	0	0
Doiron, Heather 2b	2	0	0	0	2	1	1	0	0
Hill, Katelynn rf	1	0	0	0	1	1	1	1	1
Jones, Michelle ss	2	0	0	0	2	3	5	2	0
Krieg, Meghan p	0	0	0	0	0	0	0	0	0
Totals	21	1	3	1	0	11	17	10	5

LSU 9 (1-0)

Player	ab	r	h	rbi	bb	so	po	a	lob
Simone Heyward cf	3	4	2	0	0	0	0	0	0
Juliana Santos dp	3	1	2	3	1	1	0	0	0
Ashley Langoni lf	2	1	0	1	2	1	1	0	0
Anissa Young 1b	3	1	1	2	0	0	4	0	0
Tammy Wray 3b	3	0	1	0	0	0	1	1	2
Lauren Houston c	3	0	1	0	0	1	12	0	0
Alex Boulet pr	0	1	0	0	0	0	0	0	0
Heidi Pizer ss	1	0	0	2	1	1	0	0	0
Jacee Blades rf	1	0	1	1	0	0	0	0	0
Tiffany Shaw lf	1	0	0	0	0	0	0	0	0
Cassie Trosclair 2b	3	1	1	0	0	1	0	1	3
Rachele Fico p	0	0	0	0	0	0	0	2	0
Totals	23	9	9	9	4	5	18	4	5

Score by Innings	1	2	3	4	5	6	R	H	E
Louisiana Tech	0	0	1	0	0	0	1	3	2
LSU	3	1	1	1	0	3	9	9	0

Note: 2 outs, 0 runners LOB when the game ended.

E - Knowles, M(1); Geisler, A(1), DP - La. Tech 2, LOB - La. Tech 5; LSU 5, 2B - Frandrup, J(1), 3B - Heyward(1); Santos(1), HBP - Frandrup, J; Geisler, A; Hill, K; Heyward; Young; Blades. SF - Pizer(1), SB - Heyward 2(2); Santos(1); Langoni(1); Boulet 2(2). CS - Blades(1).

Louisiana Tech	ip	h	r	er	bb	so	ab	bf	np	LSU	ip	h	r	er	bb	so	ab	bf	np
Krieg, Meghan	4.0	6	6	5	4	3	15	23	82	Rachele Fico	6.0	3	1	1	0	11	21	24	91
Frandrup, Janna	1.2	3	3	3	0	2	8	8	26										

Win - Fico (1-0). Loss - Krieg, M (0-1). Save - None.

WP - Krieg, M(1); Fico(1), HBP - by Fico (Frandrup, J); by Krieg, M (Heyward); by Krieg, M (Blades); by Fico (Geisler, A); by Fico (Hill, K); by Krieg, M (Young). Inherited runners/scored: None. Pitches/strikes: Krieg, M 82/45; Frandrup, J 26/19; Fico 91/62.

Umpires - HP: Chris Tehonica 1B: Jana Tidwell 3B: Larry White

Start: 3:07 pm Time: 1:31 Attendance:

Weather: 49 and sunny, NNW 7 mph



2011 LSU Softball
Louisiana Tech at #19 LSU
Feb 13, 2011 at Baton Rouge, La. (Tiger Park)



Louisiana Tech 2 (2-3)

Player	ab	r	h	rbi	bb	so	po	a	lob
Harmon, Kendra cf	1	0	0	0	0	1	0	0	0
Wilson, Charday cf	1	0	1	0	0	0	1	0	0
Doiron, Heather 2b	3	0	1	1	0	1	1	1	2
Frandrup, Janna dp/1b	2	0	1	1	0	2	0	0	0
Knowles, Meghan 1b/dp	1	0	0	0	1	0	0	1	0
Kipp, Erin ph/dp	2	0	0	0	1	0	0	0	0
Geisler, Allie rf	3	0	0	0	2	0	0	0	0
Goza, Molly 3b	2	0	0	0	2	0	3	3	0
Van Winkle, Tricia c	2	0	0	0	2	5	2	0	0
Krieg, Cassie lf	1	1	0	0	1	1	0	0	0
Jones, Michelle p	0	1	0	0	2	0	2	0	0
Eichmann, Emma ss	0	0	0	0	0	3	2	0	0
Totals	18	2	3	2	3	11	13	10	6

LSU 10 (6-0)

Player	ab	r	h	rbi	bb	so	po	a	lob
Simone Heyward cf	3	2	1	0	0	1	0	0	0
Juliana Santos dp	4	1	4	2	0	0	0	0	0
Ashley Langoni lf	1	2	0	0	2	0	0	0	1
Anissa Young 1b	1	2	1	1	1	0	2	0	0
Alex Boulet pr	0	1	0	0	0	0	0	0	0
Tammy Wray 3b	3	1	1	2	0	0	0	1	0
Lauren Houston c	2	0	2	3	0	0	11	0	0
Heidi Pizer ss	3	0	2	2	0	0	2	0	0
Cassie Trosclair 2b	3	0	0	0	1	0	0	0	4
Tiffany Shaw rf	3	1	1	0	0	0	0	0	0
Meghan Patterson p	0	0	0	0	0	0	0	0	0
Totals	23	10	12	10	3	2	15	1	6

Score by Innings	1	2	3	4	5	R	H	E
Louisiana Tech	0	0	2	0	0	2	3	3
LSU	3	5	0	1	1	10	12	1

Note: 1 out, 1 runner LOB when the game ended.

E - Van Winkle(1); Krieg, C(1); Jones, M(1); Pizer(1), LOB - La. Tech 6; LSU 6, 2B - Frandrup, J(2); Pizer(1), 3B - Heyward(2), HBP - Frandrup, J; Heyward; Young, SH - Wilson, C(1), SF - Houston(1), SB - Santos 3(5); Boulet(6); Shaw 2(3). CS - Wray(1); Shaw(1).

Louisiana Tech	ip	h	r	er	bb	so	ab	bf	np	LSU	ip	h	r	er	bb	so	ab	bf	np
Jones, Michelle	4.1	12	10	8	3	2	23	29	91	Meghan Patterson	5.0	3	2	1	3	11	18	23	100

Win - Patterson (2-0). Loss - Jones, M (0-1). Save - None.

HBP - by Jones, M (Heyward); by Jones, M (Young); by Patterson (Frandrup, J), PB - Van Winkle(1). Inherited runners/scored: None. Pitches/strikes: Jones, M 91/53; Patterson 100/65.

Umpires - HP: Craig Elmore 1B: Larry White 3B: Jana Tidwell

Start: 1:58 pm Time: 1:39 Attendance: 1135

Weather: 66 and sunny; SW 8 mph

2010 SEASON SERIES
NO. 4 MICHIGAN 2, NO. 19 LSU 0 • 02/20

BATON ROUGE – The No. 19 LSU softball team dropped a 2-0 decision to No. 4 Michigan during day two of the Wilson/DeMarini Tiger Classic at Tiger Park.

LSU couldn't get the bats going as Michigan's All-American hurler Jordan Taylor limited the Tigers to three hits and tallied 13 strikeouts to improve to 4-0 on the season.

The Wolverines took advantage of a Brittany Mack fielding error in the first inning. After a sacrifice bunt and a ground ball moved Bree Evans to third base, she came around to score on a wild pitch for the game's first run.

LSU used alert running on the base paths by Shortridge and Mitchell to put runners on second and third with one out in the home half of the frame. The Tigers couldn't provide the equalizer as Young struck out followed by check-swing pop-up by Langoni to keep the score at 1-0.

LSU threatened again in the fourth inning after Mitchell and Langoni squeezed out singles to put runners on first and second base with one out. Taylor responded with a pair of strikeouts to escape the jam to open a stretch of 11 consecutive batters retired to end the game.

Michigan manufactured an insurance run in the fifth inning when Maggie Viefhaus provided a two-out RBI-single to push the Wolverine edge to 2-0.



2010 LSU Softball
#4 Michigan at #19 LSU
Feb 20, 2010 at Baton Rouge, La. (Tiger Park)



Michigan 2 (5-1)

LSU 0 (5-4)

Player	ab	r	h	rbi	bb	so	po	a	lob
Evans, Bree lf	4	1	2	0	0	0	0	0	0
Findlay, Angela rf	3	0	1	0	0	0	0	0	1
Viefhaus, Maggie 3b	3	0	1	1	0	0	0	2	1
St. Clair, Roya c	2	0	1	0	1	1	12	0	2
Larsen, Kristin pr	0	0	0	0	0	0	0	0	0
Chidester, Amanda 2b	2	0	0	0	0	2	4	1	1
Nemitz, Nikki dp	3	0	0	0	0	1	0	0	0
Shaw, Dorian 1b	3	0	0	0	0	2	5	0	1
Kirkpatrick, Steph ss	3	1	1	0	0	1	0	0	0
Bausher, Molly cf	3	0	0	0	0	1	0	0	0
Taylor, Jordan p	0	0	0	0	0	0	0	2	0
Totals	26	2	6	1	1	8	21	5	6

Player	ab	r	h	rbi	bb	so	po	a	lob
Kirsten Shortridge cf	3	0	1	0	0	2	3	0	0
Ashley Applegate dp	3	0	0	0	0	1	0	0	0
Rachel Mitchell rf	2	0	1	0	1	0	0	0	0
Anissa Young 1b	3	0	0	0	0	3	4	0	0
Ashley Langoni lf	3	0	1	0	0	0	1	0	2
Juliana Santos ss/2b	2	0	0	0	0	2	2	0	0
Allison Falcon ss	1	0	0	0	0	1	1	0	0
Courtney Hollier 2b/ss	3	0	0	0	0	1	2	3	2
Morgan Russell c	1	0	0	0	0	0	8	0	0
Lauren Capello ph	1	0	0	0	0	1	0	0	0
Jessica Mouse 3b	2	0	0	0	0	1	0	3	0
Brittany Mack p	0	0	0	0	0	0	0	3	0
Totals	24	0	3	0	1	12	21	9	4

Score by Innings	1	2	3	4	5	6	7	R	H	E
Michigan	1	0	0	0	1	0	0	2	6	0
LSU	0	0	0	0	0	0	0	0	3	2

E - Falcon(2); Mack(1). LOB - Michigan 6; LSU 4. SH - A. Findlay(1); Chidester(2). SB - Mitchell(3).

Michigan	ip	h	r	er	bb	so	ab	bf	np	LSU	ip	h	r	er	bb	so	ab	bf	np
Taylor, Jordan	7.0	3	0	0	1	12	24	25	91	Brittany Mack	7.0	6	2	1	1	8	26	29	98

Win - J. Taylor (4-0). Loss - Mack (1-2). Save - None.
 WP - Mack(2). Inherited runners/scored: None. Pitches/strikes: J. Taylor 91/65; Mack 98/61.

Umpires - HP: Scott Mair 1B: Shelley Mangrum 3B: Jana Tidwell
 Start: 1:40 pm Time: 1:57 Attendance: 1169
 Weather: 66 and sunny



MACK



**2011 LSU Softball
Overall Statistics for LSU (FINAL)
(All games Sorted by Batting avg)**



Record: 40-18 Home: 21-6 Away: 13-7 Neutral: 6-5 SEC: 19-9

Player	avg	gp-gs	ab	r	h	2b	3b	hr	rbi	tb	slg%	bb	hp	so	gdp	ob%	sf	sh	sb-att	po	a	e	fld%	
25 Simone Heyward	.294	53-53	153	39	45	1	3	0	9	52	.340	28	9	33	0	.429	1	3	23-29	27	3	2	.938	
19 Anissa Young	.272	57-57	147	30	40	6	0	10	42	76	.517	27	26	29	1	.465	0	1	2-2	307	21	4	.988	
1 Tiffany Shaw	.272	58-51	147	18	40	1	0	0	12	41	.279	7	8	19	0	.340	0	4	16-23	20	0	0	1.000	
0 Ashley Langoni	.271	58-58	177	24	48	6	2	5	38	73	.412	21	3	21	2	.356	1	2	6-7	41	3	2	.957	
18 Tammy Wray	.247	58-58	166	20	41	7	0	8	33	72	.434	24	3	52	1	.351	1	1	0-1	51	126	7	.962	
16 Lauren Houston	.246	49-45	118	5	29	3	0	2	13	38	.322	7	20	17	1	.384	1	3	1-1	309	15	5	.985	
2 Juliana Santos	.232	55-54	164	27	38	9	2	1	26	54	.329	15	5	22	0	.310	3	8	10-12	53	74	8	.941	

3 Cassie Trosclair	.270	50-36	100	19	27	1	0	0	5	28	.280	4	0	28	0	.298	0	2	9-12	44	45	6	.937	
23 Jacee Blades	.252	53-38	103	15	26	1	0	0	5	27	.262	9	2	16	0	.325	0	3	3-5	60	25	0	1.000	
9 Alex Boulet	.212	51-16	52	23	11	0	1	0	3	13	.250	2	2	14	0	.268	0	2	19-24	18	3	1	.955	
4 Morgan Russell	.202	43-37	99	7	20	3	0	0	11	23	.232	10	6	13	2	.313	0	6	1-1	199	10	2	.991	
32 Allison Falcon	.167	5-3	6	1	1	0	1	0	3	3	.500	0	1	1	1	.250	1	0	0-0	1	3	0	1.000	
12 Heidi Pizer	.146	30-16	48	6	7	2	0	1	9	12	.250	6	1	19	0	.250	1	0	0-0	53	2	5	.917	
13 Katie Guillory	.000	17-0	0	7	0	0	0	0	0	0	.000	0	0	0	0	.000	0	0	1-2	0	0	0	.000	
10 Ashley Applegate	.000	3-0	0	2	0	0	0	0	0	0	.000	0	0	0	0	.000	0	0	0-0	0	0	0	.000	
Totals	.252	58	1480	243	373	40	9	27	209	512	.346	160	86	284	8	.357	9	35	91-119	1197	424	45	.973	
Opponents	.208	58	1448	157	301	34	3	26	145	419	.289	139	44	483	4	.296	5	38	51-64	1156	490	71	.959	

LOB - Team (373), Opp (322). DPs turned - Team (12), Opp (25). IBB - Team (2), Wray 1, Young 1, Opp (1). Picked off - Wray 1.

(All games Sorted by Earned run avg)

Player	era	w-l	app	gs	cg	sho	sv	ip	h	r	er	bb	so	2b	3b	hr	b/avg	wp	hp	bk	sfa	sha
44 Brittany Mack	1.74	20-7	33	27	17	6/4	1	184.2	131	66	46	64	209	14	1	5	.197	9	20	0	2	17
37 Rachele Fico	2.40	14-10	32	23	16	5/3	2	160.2	126	62	55	50	183	12	1	16	.217	4	18	12	2	18

20 Meghan Patterson	3.26	6-1	17	8	5	3/3	0	53.2	44	29	25	25	91	8	1	5	.217	1	6	0	1	3
Totals	2.21	40-18	58	58	38	19/5	3	399.0	301	157	126	139	483	34	3	26	.208	14	44	12	5	38
Opponents	3.34	18-40	58	58	32	9/0	1	385.1	373	243	184	160	284	40	9	27	.252	22	86	4	9	35

PB - Team (8), Houston 6, Russell 2, Opp (7). Pickoffs - Team (3), Houston 2, Russell 1, Opp (1). SBA/ATT - Houston (33-41), Mack (26-33), Russell (18-23), Fico (17-22), Patterson (8-9).

STARTERS BY LINEUP SPOT RECORD

1ST	STARTS	RECORD	4TH	STARTS	RECORD	7TH	STARTS	RECORD	8TH	STARTS	RECORD
Simone Heyward	46	33-13	Anissa Young	24	17-7	Morgan Russell	19	15-4	Jacee Blades	32	21-11
Tiffany Shaw	12	7-5	Ashley Langoni	21	15-6	Heidi Pizer	15	12-3	Cassie Trosclair	16	12-4
			Tammy Wray	13	8-5	Juliana Santos	7	2-5	Alex Boulet	5	5-0
2ND	STARTS	RECORD	5TH	STARTS	RECORD	Jacee Blades	5	2-3	Morgan Russell	3	1-2
Juliana Santos	43	33-10	Tammy Wray	42	31-11	Lauren Houston	4	4-0	Heidi Pizer	1	1-0
Tiffany Shaw	11	5-6	Ashley Langoni	10	5-5	Cassie Trosclair	3	3-0	Tiffany Shaw	1	0-1
Cassie Trosclair	3	2-1	Lauren Houston	4	2-2	Allison Falcon	3	2-1	9TH	STARTS	RECORD
Simone Heyward	1	0-1	Anissa Young	2	2-0	Tiffany Shaw	1	0-1	Tiffany Shaw	26	22-4
			6TH	STARTS	RECORD	Tammy Wray	1	0-1	Cassie Trosclair	14	7-7
			Lauren Houston	37	28-9				Alex Boulet	11	5-6
			Morgan Russell	15	8-7				Simone Heyward	6	5-1
			Juliana Santos	4	3-1				Jacee Blades	1	1-0
			Tammy Wray	2	1-1						

• 2011 game-by-game lineups by batting order is listed on page 15.

NO.	PLAYER [HR NUMBER]	OPPONENT [DATE]	PITCHER	ON-BASE	INNING	OUTS	COUNT	SCORE	FINAL
1	Anissa Young [1]	Purdue [Feb. 12]	Petruzzi [LHP]	1	3	2	2-1	2-0	W, 5-3
2	Tammy Wray [1]	Southeastern Louisiana [Feb. 16]	Morse [RHP]	1	1	2	3-1	1-0	W, 9-0
3	Anissa Young [2]	Southeastern Louisiana [Feb. 16]	Morse [RHP]	1	3	2	0-1	3-0	W, 9-0
4	Anissa Young [3]	vs. No. 20 Oklahoma State [Feb. 18]	Espinosa [RHP]	1	3	2	1-0	0-0	L, 5-3
5	Heidi Pizer [1]	at Houston [Feb. 19]	Bourgeois [RHP]	1	4	2	0-0	1-1	L, 5-4
6	Lauren Houston [1]	vs. Nicholls State [Feb. 19]	Winklemann [RHP]	2	5	1	1-0	8-2	W, 11-2
7	Anissa Young [4]	vs. Fordham [Feb. 26]	Mineau [RHP]	0	1	2	0-2	0-0	W, 6-2
8	Anissa Young [5]	vs. Fordham [Feb. 26]	Mineau [RHP]	2	6	2	0-0	1-2	W, 6-2
9	Tammy Wray [2]	vs. Fordham [Feb. 26]	Mineau [RHP]	0	6	2	2-2	4-2	W, 6-2
10	Ashley Langoni [1]	vs. Fordham [Feb. 26]	Mineau [RHP]	0	6	2	2-0	5-2	W, 6-2
11	Tammy Wray [3]	vs. Cal Poly [Feb. 27]	Cahn [RHP]	1	3	1	2-1	1-1	W, 7-4
12	Anissa Young [6]	Pittsburgh [March 4]	Jones [RHP]	2	6	1	1-0	1-0	W, 4-0
13	Lauren Houston [2]	at No. 1 Georgia [March 11]	Owen [RHP]	0	7	0	2-2	1-6	L, 6-3
14	Juliana Santos [1]	at No. 1 Georgia [March 11]	Owen [RHP]	0	7	0	3-2	2-6	L, 6-3
15	Ashley Langoni [2]	No. 24 Kentucky [March 20]	Riley [RHP]	0	3	2	3-2	1-1	W, 4-1
16	Tammy Wray [4]	at Nicholls State [March 23]	Bennett [RHP]	0	2	1	1-1	0-0	W, 8-0
17	Ashley Langoni [3]	at Arkansas [April 1]	McLemore [RHP]	2	4	2	1-0	2-0	W, 8-0
18	Tammy Wray [5]	at Arkansas [April 1]	Cohen [RHP]	2	7	0	2-2	5-0	W, 8-0
19	Tammy Wray [6]	at Arkansas [April 2]	Jones [RHP]	2	6	1	3-1	5-0	W, 10-1
20	Anissa Young [7]	No. 1 Alabama [April 8]	Traina [RHP]	0	14	0	2-2	1-1	W, 2-1
21	Anissa Young [8]	No. 1 Alabama [April 9]	Dunne [RHP]	1	10	1	2-1	1-1	W, 3-1
22	Ashley Langoni [4]	at No. 25 Auburn [April 20]	Schmalz [RHP]	2	3	0	1-0	1-0	W, 7-3
23	Tammy Wray [7]	at No. 25 Auburn [April 20]	Schmalz [RHP]	0	3	1	1-2	4-0	W, 7-3
24	Anissa Young [9]	at Mississippi State [May 1]	Becker [LHP]	1	1	1	1-1	0-0	W, 3-1
25	Anissa Young [10]	South Carolina [May 6]	Broyles [RHP]	1	1	1	0-0	0-0	W, 3-2
26	Tammy Wray [8]	vs. Sacred Heart [May 21]	Russell [RHP]	2	6	1	1-0	7-0	W, 10-0
27	Ashley Langoni [5]	vs. Syracuse [May 21]	Caira [RHP]	1	5	2	1-0	2-0	W, 5-0

Bold represents game tying or go-ahead home run

HOME RUN BREAKDOWN

SITE	COUNT	CLASS	GAME TYPE
Home	8	Freshmen	8
Away	10	Sophomore	2
Neutral	9	Junior	17
		Senior	0
HR TYPE		INNING	
Solo	9	1st Inning	4
Two-Run	10	2nd Inning	1
Three-Run	8	3rd Inning	7
Grand Slam	0	4th Inning	2
NUMBER OF OUTS		5th Inning	2
0 Outs	4	6th Inning	6
1 Out	9	7th Inning	3
2 Outs	14	Extra Innings	2
		GAME RESULT	
		Wins	23
		Losses	4
		MISC	
		Leadoff	2
		Inside the Park	0

DATE	OPPONENT	RESULT	INN	LSU R-H-E	OPP. R-H-E	RECORD [SEC]	PITCHER OF RECORD	ATT	TIME
Feb. 11	Louisiana Tech [1]	W, 9-1	[6]	9-9-0	1-3-2	1-0 [0-0]	Fico [1-0]	903	1:31
Feb. 11	Bowling Green [1]	W, 5-0	7	5-8-0	0-1-1	2-0 [0-0]	Mack [1-0]	903	1:38
Feb. 12	Bowling Green [1]	W, 6-0	7	6-10-0	0-4-1	3-0 [0-0]	Patterson [1-0]	1,189	2:04
Feb. 12	Purdue [1]	W, 5-3	7	5-7-1	3-4-1	4-0 [0-0]	Fico [2-0]	1,189	1:29
Feb. 13	Purdue [1]	W, 6-2	7	6-7-0	2-7-1	5-0 [0-0]	Mack [2-0]	1,135	1:49
Feb. 13	Louisiana Tech [1]	W, 10-2	[5]	10-12-1	2-3-3	6-0 [0-0]	Patterson [2-0]	1,135	1:39
Feb. 16	Southeastern Louisiana	W, 9-0	[5]	9-9-0	0-0-0	7-0 [0-0]	Fico [3-0]	1,011	1:08
Feb. 18	vs. Southern [2]	W, 12-0	[5]	12-7-1	0-0-4	8-0 [0-0]	Patterson [3-0]	537	1:33
Feb. 18	vs. No. 20 Oklahoma State [2]	L, 5-3	7	3-6-0	5-7-0	8-1 [0-0]	Fico [3-1]	537	2:32
Feb. 19	at Houston [2]	L, 5-4	[8]	4-7-2	5-5-0	8-2 [0-0]	Fico [3-2]	1,326	2:12
Feb. 19	vs. Nicholls State [2]	W, 11-2	[5]	11-8-0	2-2-3	9-2 [0-0]	Patterson [4-0]	1,326	1:29
Feb. 20	at Houston [2]	L, 1-0	[8]	0-3-0	1-1-1	9-3 [0-0]	Fico [3-3]	1,157	2:08
Feb. 23	McNeese State	W, 7-1	7	7-5-0	1-6-2	10-3 [0-0]	Mack [3-0]	917	2:08
Feb. 25	vs. No. 3 Arizona [3]	L, 4-1	7	1-4-0	4-3-1	10-4 [0-0]	Mack [3-1]	578	1:58
Feb. 26	vs. No. 14 California [3]	L, 11-3	7	3-9-5	11-18-1	10-5 [0-0]	Fico [3-4]	534	2:11
Feb. 26	vs. Fordham [3]	W, 6-2	7	6-5-4	2-4-0	11-5 [0-0]	Mack [4-1]	534	1:41
Feb. 27	vs. Cal Poly [3]	W, 7-4	7	7-7-2	4-9-0	12-5 [0-0]	Fico [4-4]	398	2:23
March 4	Pittsburgh [4]	W, 4-0	7	4-6-0	0-1-0	13-5 [0-0]	Patterson [5-0]	916	1:26
March 4	Hofstra [4]	W, 1-0	[9]	1-13-0	0-2-0	14-5 [0-0]	Mack [5-1]	916	2:20
March 6	No. 12 Texas [4]	W, 2-1	7	2-3-1	1-4-0	15-5 [0-0]	Fico [5-4]	968	1:43
March 9	No. 2 Florida [SEC]	L, 8-1	7	1-3-0	8-12-2	15-6 [0-1]	Fico [5-5]	1,267	1:40
March 9	No. 2 Florida [SEC]	L, 5-0	7	0-1-1	5-10-1	15-7 [0-2]	Mack [5-2]	1,267	1:43
March 11	at No. 1 Georgia [SEC]	L, 6-3	7	3-5-1	6-9-1	15-8 [0-3]	Fico [5-6]	335	2:11
March 12	at No. 1 Georgia [SEC]	L, 8-0	[5]	0-4-1	8-9-0	15-9 [0-4]	Mack [5-3]	1,355	1:42
March 13	at No. 1 Georgia [SEC]	L, 12-0	[5]	0-2-2	12-10-1	15-10 [0-5]	Fico [5-7]	1,392	1:42
March 16	at Southern Miss	L, 7-0	7	0-4-0	7-7-0	15-11 [0-5]	Patterson [5-1]	847	2:11
March 18	No. 24 Kentucky [SEC]	L, 6-1	7	6-13-1	1-7-1	15-12 [0-6]	Fico [5-8]	1,118	2:05
March 19	No. 24 Kentucky [SEC]	W, 2-1	7	1-4-0	2-2-0	16-12 [1-6]	Mack [6-3]	1,273	2:02
March 20	No. 24 Kentucky [SEC]	W, 4-1	7	1-1-2	4-5-1	17-12 [2-6]	Mack [7-3]	1,222	1:34
March 23	at Nicholls State	W, 8-0	[5]	8-7-1	0-2-3	18-12 [2-6]	Patterson [6-1]	293	1:21
April 1	at Arkansas [SEC]	W, 8-0	7	8-10-0	0-4-2	19-12 [3-6]	Fico [6-8]	556	1:49
April 2	at Arkansas [SEC]	W, 10-1	7	10-11-0	1-5-4	20-12 [4-6]	Mack [8-3]	672	2:22
April 3	at Arkansas [SEC]	W, 1-0	7	1-5-0	0-3-2	21-12 [5-6]	Fico [7-8]	585	1:37
April 6	Nicholls State	W, 8-0	[5]	0-4-1	8-11-0	22-12 [5-6]	Fico [8-8]	965	1:38
April 8	No. 1 Alabama [SEC]	W, 2-1	[14]	1-8-0	2-7-1	23-12 [6-6]	Mack [9-3]	1,503	4:31
April 9	No. 1 Alabama [SEC]	W, 3-1	[10]	1-4-3	3-7-0	24-12 [7-6]	Fico [9-8]	2,563	3:15
April 10	No. 1 Alabama [SEC]	W, 2-0	7	0-2-1	2-0-2	25-12 [8-6]	Mack [10-3]	1,865	2:02
April 13	at McNeese State	W, 4-2	[9]	4-9-1	2-6-2	26-12 [8-6]	Fico [10-8]	506	2:26
April 15	No. 6 Tennessee [SEC]	L, 6-0	7	0-3-1	6-6-0	26-13 [8-7]	Mack [10-4]	1,326	2:01
April 16	No. 6 Tennessee [SEC]	L, 11-0	7	0-4-1	11-10-0	26-14 [8-8]	Fico [10-9]	1,260	2:09
April 17	No. 6 Tennessee [SEC]	L, 7-2	7	2-5-3	7-10-1	26-15 [8-9]	Mack [10-5]	1,280	2:24
April 20	at No. 25 Auburn [SEC]	W, 7-3	7	7-7-1	3-6-3	27-15 [9-9]	Mack [11-5]	203	2:24
April 20	at No. 25 Auburn [SEC]	W, 1-0	7	1-7-1	0-3-1	28-15 [10-9]	Fico [11-9]	203	1:43
April 22	at Ole Miss [SEC]	W, 8-0	7	8-7-0	0-4-4	29-15 [11-9]	Mack [12-5]	387	2:20
April 23	at Ole Miss [SEC]	W, 4-0	7	4-8-0	0-3-0	30-15 [12-9]	Fico [12-9]	511	1:56
April 24	at Ole Miss [SEC]	W, 4-0	7	4-2-0	0-1-2	31-15 [13-9]	Mack [13-5]	118	1:48
April 27	Southern Miss	W, 2-0	7	2-6-0	0-5-2	32-15 [13-9]	Fico [13-9]	1,176	1:51
April 29	at Mississippi State [SEC]	W, 4-2	7	4-10-3	2-8-1	33-15 [14-9]	Mack [14-5]	226	2:11
April 30	at Mississippi State [SEC]	W, 7-6	7	7-9-0	6-5-4	34-15 [15-9]	Mack [15-5]	215	2:20
May 1	at Mississippi State [SEC]	W, 3-1	7	3-5-0	1-3-0	35-15 [16-9]	Mack [16-5]	213	1:57
May 6	South Carolina [SEC]	W, 3-2	7	3-6-2	2-5-0	36-15 [17-9]	Mack [17-5]	1,429	2:04
May 7	South Carolina [SEC]	W, 6-1	7	6-11-0	1-8-2	37-15 [18-9]	Fico [14-9]	1,515	2:13
May 8	South Carolina [SEC]	W, 8-0	[5]	8-6-0	0-2-2	38-15 [19-9]	Mack [18-5]	1,483	2:11
May 12	vs. No. 8 Georgia [5]	L, 9-0	[5]	0-2-1	9-9-0	38-16 [19-9]	Mack [18-6]	1,080	1:43
May 20	vs. Syracuse [6]	L, 3-0	[11]	0-5-2	3-6-0	38-17 [19-9]	Fico [14-10]	1,098	2:45
May 21	vs. Sacred Heart [6]	W, 10-0	[6]	10-12-0	0-2-3	39-17 [19-9]	Mack [19-6]	1,249	1:33
May 21	vs. Syracuse [6]	W, 5-0	7	5-8-0	0-4-0	40-17 [19-9]	Mack [20-6]	1,249	1:32
May 22	at No. 18 Texas A&M [6]	L, 3-1	[9]	1-4-1	3-4-0	40-18 [19-9]	Mack [20-7]	1,252	2:12

All home games are bolded and played at Tiger Park • All rankings reflect NFCA Top 25 poll on day of game • [SEC] Southeastern Conference game; [1] Wilson/DeMarini Tiger Classic [Tiger Park]; [2] Houston Hilton Plaza Classic [Houston, Texas]; [3] Cathedral City Classic [Palm Springs, Calif.]; [4] Purple & Gold Challenge [Tiger Park]; [5] SEC Tournament [Oxford, Miss.]; [6] NCAA College Station Regional [College Station, Texas].

DATE	OPPONENT	1ST	2ND	3RD	4TH	5TH	6TH	7TH	8TH	9TH
Feb. 11	Louisiana Tech [1]	Heyward	Santos	Langoni	Young	Wray	Houston	Pizer	Blades	Trosclair
Feb. 11	Bowling Green [1]	Heyward	Santos	Langoni	Young	Wray	Russell	Pizer	Boulet	Trosclair
Feb. 12	Bowling Green [1]	Heyward	Santos	Langoni	Young	Wray	Houston	Pizer	Trosclair	Shaw
Feb. 12	Purdue [1]	Heyward	Santos	Langoni	Young	Wray	Russell	Falcon	Trosclair	Shaw
Feb. 13	Purdue [1]	Heyward	Santos	Langoni	Young	Wray	Russell	Falcon	Trosclair	Blades
Feb. 13	Louisiana Tech [1]	Heyward	Santos	Langoni	Young	Wray	Houston	Pizer	Trosclair	Shaw
Feb. 16	Southeastern Louisiana	Heyward	Santos	Langoni	Young	Wray	Russell	Pizer	Trosclair	Shaw
Feb. 18	vs. Southern [2]	Heyward	Santos	Langoni	Young	Wray	Houston	Blades	Trosclair	Shaw
Feb. 18	vs. No. 20 Oklahoma State [2]	Shaw	Santos	Langoni	Young	Wray	Russell	Falcon	Blades	Boulet
Feb. 19	at Houston [2]	Shaw	Santos	Langoni	Young	Wray	Russell	Pizer	Blades	Trosclair
Feb. 19	vs. Nicholls State [2]	Shaw	Santos	Langoni	Young	Wray	Houston	Blades	Boulet	Trosclair
Feb. 20	at Houston [2]	Shaw	Santos	Langoni	Young	Wray	Russell	Pizer	Blades	Trosclair
Feb. 23	McNeese State	Shaw	Santos	Langoni	Young	Wray	Russell	Houston	Blades	Trosclair
Feb. 25	vs. No. 3 Arizona [3]	Heyward	Santos	Langoni	Young	Wray	Russell	Blades	Shaw	Trosclair
Feb. 26	vs. No. 14 California [3]	Heyward	Santos	Langoni	Young	Wray	Russell	Shaw	Blades	Trosclair
Feb. 26	vs. Fordham [3]	Heyward	Shaw	Young	Wray	Langoni	Santos	Houston	Blades	Trosclair
Feb. 27	vs. Cal Poly [3]	Heyward	Shaw	Young	Wray	Langoni	Santos	Houston	Pizer	Trosclair
March 4	Pittsburgh [4]	Heyward	Shaw	Young	Wray	Langoni	Russell	Santos	Blades	Trosclair
March 4	Hofstra [4]	Heyward	Shaw	Young	Wray	Langoni	Houston	Santos	Blades	Boulet
March 6	No. 12 Texas [4]	Heyward	Shaw	Young	Wray	Langoni	Santos	Houston	Blades	Boulet
March 9	No. 2 Florida [SEC]	Heyward	Shaw	Young	Wray	Langoni	Russell	Santos	Blades	Boulet
March 9	No. 2 Florida [SEC]	Heyward	Shaw	Young	Wray	Langoni	Houston	Santos	Blades	Boulet
March 11	at No. 1 Georgia [SEC]	Heyward	Shaw	Young	Wray	Langoni	Houston	Santos	Blades	Boulet
March 12	at No. 1 Georgia [SEC]	Heyward	Shaw	Young	Wray	Langoni	Houston	Santos	Blades	Trosclair
March 13	at No. 1 Georgia [SEC]	Heyward	Shaw	Young	Wray	Langoni	Houston	Santos	Blades	Trosclair
March 16	at Southern Miss	Heyward	Santos	Langoni	Young	Wray	Houston	Blades	Trosclair	Shaw
March 18	No. 24 Kentucky [SEC]	Heyward	Shaw	Langoni	Young	Wray	Russell	Blades	Trosclair	Boulet
March 19	No. 24 Kentucky [SEC]	Heyward	Santos	Langoni	Young	Wray	Houston	Pizer	Blades	Shaw
March 20	No. 24 Kentucky [SEC]	Heyward	Santos	Langoni	Young	Wray	Houston	Pizer	Blades	Shaw
March 23	at Nicholls State	Heyward	Santos	Langoni	Young	Wray	Russell	Pizer	Blades	Shaw
April 1	at Arkansas [SEC]	Heyward	Santos	Langoni	Young	Wray	Houston	Pizer	Trosclair	Shaw
April 2	at Arkansas [SEC]	Heyward	Santos	Langoni	Young	Wray	Houston	Russell	Trosclair	Boulet
April 3	at Arkansas [SEC]	Heyward	Santos	Langoni	Young	Wray	Houston	Russell	Trosclair	Boulet
April 6	Nicholls State	Heyward	Santos	Langoni	Wray	Young	Houston	Trosclair	Boulet	Shaw
April 8	No. 1 Alabama [SEC]	Heyward	Santos	Langoni	Wray	Young	Houston	Trosclair	Boulet	Shaw
April 9	No. 1 Alabama [SEC]	Heyward	Santos	Langoni	Young	Wray	Houston	Trosclair	Boulet	Shaw
April 10	No. 1 Alabama [SEC]	Heyward	Trosclair	Young	Langoni	Wray	Houston	Pizer	Blades	Shaw
April 13	at McNeese State	Heyward	Trosclair	Young	Langoni	Wray	Houston	Pizer	Russell	Shaw
April 15	No. 6 Tennessee [SEC]	Heyward	Trosclair	Young	Langoni	Wray	Houston	Pizer	Russell	Shaw
April 16	No. 6 Tennessee [SEC]	Shaw	Heyward	Young	Langoni	Houston	Santos	Wray	Russell	Trosclair
April 17	No. 6 Tennessee [SEC]	Shaw	Santos	Young	Langoni	Houston	Wray	Russell	Trosclair	Heyward
April 20	at No. 25 Auburn [SEC]	Shaw	Santos	Young	Langoni	Houston	Wray	Russell	Trosclair	Heyward
April 20	at No. 25 Auburn [SEC]	Shaw	Santos	Young	Langoni	Wray	Houston	Russell	Blades	Heyward
April 22	at Ole Miss [SEC]	Shaw	Santos	Young	Langoni	Wray	Houston	Russell	Blades	Heyward
April 23	at Ole Miss [SEC]	Shaw	Santos	Young	Langoni	Wray	Houston	Russell	Blades	Heyward
April 24	at Ole Miss [SEC]	Shaw	Santos	Young	Langoni	Wray	Houston	Russell	Blades	Heyward
April 27	Southern Miss	Heyward	Santos	Langoni	Wray	Houston	Russell	Pizer	Blades	Shaw
April 29	at Mississippi State [SEC]	Heyward	Santos	Young	Langoni	Wray	Houston	Russell	Blades	Shaw
April 30	at Mississippi State [SEC]	Heyward	Santos	Young	Langoni	Wray	Houston	Russell	Blades	Shaw
May 1	at Mississippi State [SEC]	Heyward	Santos	Young	Langoni	Wray	Houston	Russell	Blades	Shaw
May 6	South Carolina [SEC]	Heyward	Santos	Young	Langoni	Wray	Houston	Russell	Blades	Shaw
May 7	South Carolina [SEC]	Heyward	Santos	Young	Langoni	Wray	Houston	Russell	Blades	Shaw
May 8	South Carolina [SEC]	Heyward	Santos	Young	Langoni	Wray	Houston	Russell	Blades	Shaw
May 12	vs. No. 8 Georgia [5]	Heyward	Santos	Young	Langoni	Wray	Houston	Russell	Blades	Shaw
May 20	vs. Syracuse [6]	Heyward	Santos	Young	Langoni	Wray	Houston	Russell	Blades	Shaw
May 21	vs. Sacred Heart [6]	Heyward	Santos	Young	Langoni	Wray	Houston	Russell	Trosclair	Shaw
May 21	vs. Syracuse [6]	Heyward	Santos	Young	Langoni	Wray	Houston	Russell	Trosclair	Boulet
May 22	at No. 18 Texas A&M [6]	Heyward	Santos	Young	Langoni	Wray	Houston	Russell	Trosclair	Boulet

All home games are bolded and played at Tiger Park • All rankings reflect NFCA Top 25 poll on day of game • [SEC] Southeastern Conference game; [1] Wilson/DeMarini Tiger Classic [Tiger Park]; [2] Houston Hilton Plaza Classic [Houston, Texas]; [3] Cathedral City Classic [Palm Springs, Calif.]; [4] Purple & Gold Challenge [Tiger Park]; [5] SEC Tournament [Oxford, Miss.]; [6] NCAA College Station Regional [College Station, Texas].

DATE	OPPONENT	P	C	1B	2B	SS	3B	LF	CF	RF	DP
Feb. 11	Louisiana Tech [1]	Fico	Houston	Young	Trosclair	Pizer	Wray	Langoni	Heyward	Blades	Santos
Feb. 11	Bowling Green [1]	Mack	Russell	Young	Trosclair	Pizer	Wray	Langoni	Heyward	Boulet	Santos
Feb. 12	Bowling Green [1]	Patterson	Houston	Young	Trosclair	Pizer	Wray	Langoni	Heyward	Shaw	Santos
Feb. 12	Purdue [1]	Fico	Russell	Young	Santos	Falcon	Wray	Langoni	Heyward	Shaw	Trosclair
Feb. 13	Purdue [1]	Mack	Russell	Young	Santos	Falcon	Wray	Langoni	Heyward	Blades	Trosclair
Feb. 13	Louisiana Tech [1]	Patterson	Houston	Young	Trosclair	Pizer	Wray	Langoni	Heyward	Shaw	Santos
Feb. 16	Southeastern Louisiana	Fico	Russell	Young	Trosclair	Pizer	Wray	Langoni	Heyward	Shaw	Santos
Feb. 18	vs. Southern [2]	Patterson	Houston	Young	Trosclair	Blades	Wray	Langoni	Heyward	Shaw	Santos
Feb. 18	vs. No. 20 Oklahoma State [2]	Fico	Russell	Young	Santos	Falcon	Wray	Langoni	Boulet	Blades	Shaw
Feb. 19	at Houston [2]	Mack	Russell	Young	Trosclair	Pizer	Wray	Langoni	Blades	Shaw	Santos
Feb. 19	vs. Nicholls State [2]	Patterson	Houston	Young	Trosclair	Blades	Wray	Langoni	Boulet	Shaw	Santos
Feb. 20	at Houston [2]	Fico	Russell	Young	Trosclair	Santos	Wray	Langoni	Blades	Shaw	Pizer
Feb. 23	McNeese State	Patterson	Houston	Young	Trosclair	Santos	Wray	Langoni	Blades	Shaw	Russell
Feb. 25	vs. No. 3 Arizona [3]	Mack	Russell	Young	Trosclair	Santos	Wray	Langoni	Heyward	Blades	Shaw
Feb. 26	vs. No. 14 California [3]	Fico	Russell	Young	Trosclair	Santos	Wray	Langoni	Heyward	Blades	Shaw
Feb. 26	vs. Fordham [3]	Mack	Houston	Young	Trosclair	Santos	Wray	Langoni	Heyward	Blades	Shaw
Feb. 27	vs. Cal Poly [3]	Mack	Houston	Pizer	Trosclair	Santos	Wray	Langoni	Heyward	Shaw	Young
March 4	Pittsburgh [4]	Patterson	Russell	Young	Trosclair	Santos	Wray	Langoni	Heyward	Blades	Shaw
March 4	Hofstra [4]	Mack	Houston	Young	Blades	Santos	Wray	Langoni	Heyward	Boulet	Shaw
March 6	No. 12 Texas [4]	Fico	Houston	Young	Blades	Santos	Wray	Langoni	Heyward	Boulet	Shaw
March 9	No. 2 Florida [SEC]	Fico	Russell	Young	Blades	Santos	Wray	Langoni	Heyward	Boulet	Shaw
March 9	No. 2 Florida [SEC]	Mack	Houston	Young	Blades	Santos	Wray	Langoni	Heyward	Boulet	Shaw
March 11	at No. 1 Georgia [SEC]	Fico	Houston	Young	Blades	Santos	Wray	Langoni	Heyward	Boulet	Shaw
March 12	at No. 1 Georgia [SEC]	Mack	Houston	Young	Trosclair	Santos	Wray	Langoni	Heyward	Blades	Shaw
March 13	at No. 1 Georgia [SEC]	Fico	Houston	Young	Trosclair	Santos	Wray	Langoni	Heyward	Blades	Shaw
March 16	at Southern Miss	Patterson	Houston	Young	Trosclair	Santos	Wray	Langoni	Heyward	Blades	Shaw
March 18	No. 24 Kentucky [SEC]	Fico	Russell	Young	Trosclair	Blades	Wray	Langoni	Heyward	Boulet	Shaw
March 19	No. 24 Kentucky [SEC]	Mack	Houston	Pizer	Blades	Wray	Young	Langoni	Heyward	Shaw	Santos
March 20	No. 24 Kentucky [SEC]	Mack	Houston	Pizer	Wray	Young	Langoni	Heyward	Shaw	Santos	
March 23	at Nicholls State	Patterson	Russell	Pizer	Santos	Wray	Young	Langoni	Heyward	Blades	Shaw
April 1	at Arkansas [SEC]	Fico	Houston	Pizer	Santos	Wray	Young	Langoni	Heyward	Shaw	Trosclair
April 2	at Arkansas [SEC]	Mack	Houston	Young	Trosclair	Santos	Wray	Langoni	Heyward	Boulet	Russell
April 3	at Arkansas [SEC]	Fico	Russell	Young	Trosclair	Santos	Wray	Langoni	Heyward	Boulet	Houston
April 6	Nicholls State	Fico	Houston	Young	Trosclair	Santos	Wray	Langoni	Heyward	Boulet	Shaw
April 8	No. 1 Alabama [SEC]	Mack	Houston	Young	Trosclair	Santos	Wray	Langoni	Heyward	Boulet	Shaw
April 9	No. 1 Alabama [SEC]	Fico	Houston	Young	Trosclair	Santos	Wray	Langoni	Heyward	Boulet	Shaw
April 10	No. 1 Alabama [SEC]	Mack	Houston	Pizer	Trosclair	Wray	Young	Langoni	Heyward	Blades	Shaw
April 13	at McNeese State	Fico	Russell	Pizer	Trosclair	Wray	Young	Langoni	Heyward	Shaw	Houston
April 15	No. 6 Tennessee [SEC]	Mack	Houston	Pizer	Trosclair	Wray	Young	Langoni	Heyward	Shaw	Russell
April 16	No. 6 Tennessee [SEC]	Fico	Houston	Young	Trosclair	Wray	Santos	Langoni	Heyward	Shaw	Russell
April 17	No. 6 Tennessee [SEC]	Mack	Houston	Young	Trosclair	Santos	Wray	Langoni	Heyward	Shaw	Russell
April 20	at No. 25 Auburn [SEC]	Mack	Houston	Young	Trosclair	Santos	Wray	Langoni	Heyward	Shaw	Russell
April 20	at No. 25 Auburn [SEC]	Fico	Russell	Young	Blades	Santos	Wray	Langoni	Heyward	Shaw	Houston
April 22	at Ole Miss [SEC]	Mack	Houston	Young	Blades	Santos	Wray	Langoni	Heyward	Shaw	Russell
April 23	at Ole Miss [SEC]	Fico	Russell	Young	Blades	Santos	Wray	Langoni	Heyward	Shaw	Houston
April 24	at Ole Miss [SEC]	Mack	Houston	Young	Blades	Santos	Wray	Langoni	Heyward	Shaw	Russell
April 27	Southern Miss	Fico	Houston	Pizer	Blades	Santos	Wray	Langoni	Heyward	Shaw	Russell
April 29	at Mississippi State [SEC]	Mack	Houston	Young	Blades	Santos	Wray	Langoni	Heyward	Shaw	Russell
April 30	at Mississippi State [SEC]	Fico	Russell	Young	Blades	Santos	Wray	Langoni	Heyward	Shaw	Houston
May 1	at Mississippi State [SEC]	Mack	Houston	Young	Blades	Santos	Wray	Langoni	Heyward	Shaw	Russell
May 6	South Carolina [SEC]	Mack	Houston	Young	Blades	Santos	Wray	Langoni	Heyward	Shaw	Russell
May 7	South Carolina [SEC]	Fico	Russell	Young	Blades	Santos	Wray	Langoni	Heyward	Shaw	Houston
May 8	South Carolina [SEC]	Mack	Houston	Young	Blades	Santos	Wray	Langoni	Heyward	Shaw	Russell
May 12	vs. No. 8 Georgia [5]	Mack	Houston	Young	Blades	Santos	Wray	Langoni	Heyward	Shaw	Russell
May 20	vs. Syracuse [6]	Fico	Russell	Young	Blades	Santos	Wray	Langoni	Heyward	Shaw	Houston
May 21	vs. Sacred Heart [6]	Mack	Russell	Young	Trosclair	Santos	Wray	Langoni	Heyward	Shaw	Houston
May 21	vs. Syracuse [6]	Mack	Russell	Young	Trosclair	Santos	Wray	Langoni	Heyward	Boulet	Houston
May 22	at No. 18 Texas A&M [6]	Mack	Russell	Young	Trosclair	Santos	Wray	Langoni	Heyward	Boulet	Houston

All home games are bolded and played at Tiger Park • All rankings reflect NFCA Top 25 poll on day of game • [SEC] Southeastern Conference game; [1] Wilson/DeMarini Tiger Classic [Tiger Park]; [2] Houston Hilton Plaza Classic [Houston, Texas]; [3] Cathedral City Classic [Palm Springs, Calif.]; [4] Purple & Gold Challenge [Tiger Park]; [5] SEC Tournament [Oxford, Miss.]; [6] NCAA College Station Regional [College Station, Texas].



#00 ASHLEY LANGONI • R-R • OF • R-R • PUEBLO, COLORADO

SEASON HIGHS

Runs
NA

Hits
NA

RBIs
NA

Hit Streak
NA

CAREER HIGHS

Runs
3 vs. No. 5 Florida 05/14/10

Hits
3 [5x] vs. Syracuse 05/21/11

RBIs
5 at Arkansas 04/01/11

Hit Streak
7 03/13/11-04/01/11



#1 RIKKI ALCARAZ • FR. • INF • L-R • ORLAND PARK, ILLINOIS

SEASON HIGHS

Runs
NA

Hits
NA

RBIs
NA

Hit Streak
NA

CAREER HIGHS

Runs
NA

Hits
NA

RBIs
NA

Hit Streak
NA



#2 JULIANA SANTOS • JR. • INF • R-R • NEWMAN, CALIFORNIA

SEASON HIGHS

Runs
NA

Hits
NA

RBIs
NA

Hit Streak
NA

CAREER HIGHS

Runs
2 [11x] at Ole Miss 04/22/11

Hits
5 at Arkansas 04/02/11

RBIs
5 Kentucky 03/08/09

Hit Streak
6 04/16/11-04/23/11



#3 CASSIE TROSCLAIR • SR. • INF • L-R • NEW ORLEANS, LA.

SEASON HIGHS

Runs
NA

Hits
NA

RBIs
NA

Hit Streak
NA

CAREER HIGHS

Runs
2 [3x] vs. Sacred Heart 05/21/11

Hits
3 [2x] vs. Sacred Heart 05/21/11

RBIs
2 vs. Southern 02/18/11

Hit Streak
3 04/06/11-04/09/11



#4 MORGAN RUSSELL • SR. • C • R-R • EDMOND, OKLAHOMA

SEASON HIGHS

Runs
NA

Hits
NA

RBIs
NA

Hit Streak
NA

CAREER HIGHS

Runs
2 [2x] Purdue 02/13/11

Hits
3 [2x] South Carolina 05/07/11

RBIs
3 UAB 02/22/09

Hit Streak
5 02/11/11-02/18/11



#6 A.J. ANDREWS • FR. • OF • L-R • OLDSMAR, FLORIDA

SEASON HIGHS

Runs
NA

Hits
NA

RBIs
NA

Hit Streak
NA

CAREER HIGHS

Runs
NA

Hits
NA

RBIs
NA

Hit Streak
NA



#9 ALEX BOULET • SO. • OF • L-L • CROWLEY, LOUISIANA

SEASON HIGHS

Runs
NA

Hits
NA

RBIs
NA

Hit Streak
NA

CAREER HIGHS

Runs
2 [2x] Nicholls State 04/06/11

Hits
2 Nicholls State 04/06/11

RBIs
1 [3x] vs. Sacred Heart 05/22/11

Hit Streak
2 [2x] 04/23/11-04/27/11



#10 ASHLEY APPEGATE • SR. • OF • L-R • MODESTO, CALIFORNIA

SEASON HIGHS

Runs
NA

Hits
NA

RBIs
NA

Hit Streak
NA

CAREER HIGHS

Runs
2 [9x] at Nicholls State 04/14/10

Hits
4 Kentucky 03/07/09

RBIs
3 at Southeastern Louisiana 03/24/10

Hit Streak
6 [4x] 05/08/10-05/15/10



#11 DYLAN SUPAK • FR. • UTL • R-R • LAGRANGE, TEXAS

SEASON HIGHS

Runs
NA

Hits
NA

RBIs
NA

Hit Streak
NA

CAREER HIGHS

Runs
NA

Hits
NA

RBIs
NA

Hit Streak
NA



#12 HEIDI PIZER • SR. • INF • R-R • TIGARD, OREGON

SEASON HIGHS

Runs
NA

Hits
NA

RBIs
NA

Hit Streak
NA

CAREER HIGHS

Runs
2 at Nicholls State 04/14/10

Hits
2 [2x] Louisiana Tech 02/13/11

RBIs
3 at Nicholls State 04/14/10

Hit Streak
3 02/11/11-02/13/11



#13 KATIE GUILLORY • SR. • OF • L-L • LAFAYETTE, LOUISIANA

SEASON HIGHS

Runs
NA

Hits
NA

RBIs
NA

Hit Streak
NA

CAREER HIGHS

Runs
1 [21x] vs. Sacred Heart 05/21/11

Hits
1 [3x] Nicholls State 03/04/09

RBIs
1 UAB 02/21/09

Hit Streak
2 02/25/09-03/04/09



#16 LAUREN HOUSTON • JR. • C • R-R • YOUNGVILLE, LOUISIANA

SEASON HIGHS

Runs
NA

Hits
NA

RBIs
NA

Hit Streak
NA

CAREER HIGHS

Runs
1 [6x] at Mississippi State 04/29/11

Hits
2 [6x] at No. 1 Georgia 03/11/11

RBIs
3 [2x] vs. Nicholls State 02/19/11

Hit Streak
3 [2x] 05/06/11-05/08/11



#18 TAMMY WRAY • SO. • INF • R-R • SOMERS, NEW YORK

SEASON HIGHS

Runs
NA

Hits
NA

RBI's
NA

Hit Streak
NA

CAREER HIGHS

Runs
2 [5x] at Nicholls State 03/23/11

Hits
3 Southeastern Louisiana 02/16/11

RBI's
3 [5x] vs. Sacred Heart 05/21/11

Hit Streak
6 [2x] 03/20/11-04/06/11



#23 JACEE BLADES • SO. • OF • L-R • BATON ROUGE, LOUISIANA

SEASON HIGHS

Runs
NA

Hits
NA

RBI's
NA

Hit Streak
NA

CAREER HIGHS

Runs
2 vs. Nicholls State 02/19/11

Hits
3 vs. Nicholls State 02/19/11

RBI's
1 [5x] at Ole Miss 04/23/11

Hit Streak
7 04/22/11-05/01/11



#25 SIMONE HEYWARD • SO. • OF • R-R • SACRAMENTO, CALIFORNIA

SEASON HIGHS

Runs
NA

Hits
NA

RBI's
NA

Hit Streak
NA

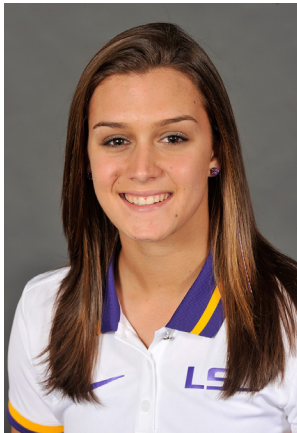
CAREER HIGHS

Runs
4 Louisiana Tech 02/11/11

Hits
2 [11x] vs. Syracuse 05/21/11

RBI's
1 [9x] vs. Syracuse 05/21/11

Hit Streak
4 [4x] 05/20/11-05/22/11



#28 TAMMY VERMEULEN • FR. • OF • L-R • PATCHOGUE, NEW YORK

SEASON HIGHS

Runs
NA

Hits
NA

RBI's
NA

Hit Streak
NA

CAREER HIGHS

Runs
NA

Hits
NA

RBI's
NA

Hit Streak
NA



#32 ALLISON FALCON • SO. • INF • R-R • DONALDSONVILLE, LOUISIANA

SEASON HIGHS		CAREER HIGHS	
Runs	NA	Runs	3
Hits	NA	Hits	3
RBIs	NA	RBIs	3
Hit Streak	NA	Hit Streak	2 [2x]
			Nicholls State 03/23/10
			Southern 02/26/10
			Purdue 02/13/11
			03/20/10



#33 KAILEY MCCASLAND • FR. • UTL • R-R • SAN CLEMENTE, CALIFORNIA

SEASON HIGHS		CAREER HIGHS	
Runs	NA	Runs	NA
Hits	NA	Hits	NA
RBIs	NA	RBIs	NA
Hit Streak	NA	Hit Streak	NA



#47 ASHLEIGH KUHN • SO. • UTL • R-R • NEDERLAND, TEXAS

SEASON HIGHS		CAREER HIGHS	
Runs	NA	Runs	NA
Hits	NA	Hits	NA
RBIs	NA	RBIs	NA
Hit Streak	NA	Hit Streak	NA



#20 MEGHAN PATTERSON • SO. • P • R-R • DESTREHAN, LOUISIANA

SEASON HIGHS

Runs

NA

Hits

NA

Walks

NA

Strikeouts

NA

CAREER HIGHS

Runs

6

vs. No. 14 California

02/26/11

Hits

10

vs. No. 14 California

02/26/11

Walks

4

vs. Southern

02/18/11

Strikeouts

11 [2x]

Louisiana Tech

02/13/11



#37 RACHELE FICO • JR. • P • R-R • OXFORD, CONNECTICUT

SEASON HIGHS

Runs

NA

Hits

NA

Walks

NA

Strikeouts

NA

CAREER HIGHS

Runs

7

No. 6 Tennessee

04/16/11

Hits

13

No. 24 Kentucky

03/18/11

Walks

6 [3x]

at Mississippi State

04/30/11

Strikeouts

18

vs. Syracuse

05/20/11



#44 BRITTANY MACK • SR. • P • R-R • ROUND ROCK, TEXAS

SEASON HIGHS

Runs

NA

Hits

NA

Walks

NA

Strikeouts

NA

CAREER HIGHS

Runs

6 [3x]

vs. No. 8 Georgia

05/12/11

Hits

12

Mississippi State

04/10/10

Walks

8

No. 1 Alabama

04/08/11

Strikeouts

14

No. 1 Alabama

04/08/11