

# LSU 2010-11 BASKETBALL

NATIONAL TITLES  
1935

SEC CHAMPIONS  
1935 • 1953 • 1954 • 1979 • 1981  
1985 • 1991 • 2000 • 2006 • 2009

NCAA FINAL FOUR  
1953 • 1981 • 1986 • 2006

## 10 McNeese State University

December 16 2010 \* 7 p.m. \* CST  
Baton Rouge, La. \* Pete Maravich Assembly Center

### LSU (6-3)

#### November

Fri. 12	NORTHWESTERN STATE	<b>W, 87-78</b>
Tues. 16	NICHOLLS STATE	L, 53-62
Thurs. 18	TENN-MARTIN (CST)	<b>W, 79-56</b>
Sun. 21	Memphis (at Tupelo, Miss.)(CBSCS)	L, 60-71
Wed. 24	CENTENARY	<b>W, 78-36</b>
Sun. 28	at South Alabama (CSS)	<b>W, 80-65</b>
Tues. 30	HOUSTON	<b>W, 73-57</b>

#### December

Sat. 11	CENTRAL MICHIGAN (CST)	<b>W, 59-55</b>
Mon. 13	COASTAL CAROLINA	L, 69-78 (ot)
Thurs. 16	MCNEESE (CST)	7 p.m.
Sat. 18	WICHITA STATE (at Bossier City)(CST)	7 p.m.
Wed. 22	NORTH TEXAS (CST)	7 p.m.
Mon. 27	SOUTHERN (CST)	6 p.m.
Wed. 29	at Rice (CBSCS)	7 p.m.

#### January

Sun 2	at Virginia (FSN)	4:30 p.m.
Sat. 8	*at Auburn (FSN)	5 p.m.
Wed. 12	*ARKANSAS (SEC Network)	7 p.m.
Sat. 15	*at Kentucky (SEC Network)	3 p.m.
Sat. 22	*OLE MISS (SEC Network)	12:30 p.m.
Wed. 26	*at Tennessee (SEC Network)	7 p.m.
Sat. 29	*at Alabama (FSN)	7 p.m.

#### February

Wed. 2	*SOUTH CAROLINA (SEC Network)	7 p.m.
Sat. 5	*MISSISSIPPI STATE (SEC Network)	3 p.m.
Wed. 9	*at Ole Miss (CSS/CST)	8 p.m.
Sat. 12	*at Arkansas (SEC Network)	7 p.m.
Thurs. 17	*ALABAMA (ESPN/ESPN2)	8 p.m.
Sun. 20	*FLORIDA (ESPN/ESPN2)	Noon
Wed. 23	*at Mississippi State (CSS/CST)	8 p.m.
Sat. 26	*VANDERBILT (SEC Network)	12:30 p.m.

#### March

Wed. 2	*at Georgia (SEC Network)	7 p.m.
Sat. 5	*AUBURN (FSN)	6 p.m.
March 10-13 SEC Tournament (Atlanta, Ga.)		

### On the Air

#### Radio • LSU Sports Radio Network

Jim Hawthorne, play-by-play  
Kevin Ford, host/analyst  
Ricky Blanton, analyst

#### Television • CST

Lyn Rollins, play-by-play  
Jordy Hultberg, host/analyst



### PROJECTED LSU LINEUP (BASED ON LAST GAME)

#### PG 10 Andre Stringer (5-9, Fr., Jackson, Miss.) 15.2 ppg, 2.1 rpg, 2.9 apg

Has had 21 points on two occasions ... Hit four treys for the fourth time this season against Coastal Carolina (12/13) ... Has started last seven games at the point ... Long-range shooter has hit 21 treys in first nine games (2.3 a game) ... Led the team in scoring in seven games, double figures in eight ... 17-18 at line over 3 games, 21-53 from the arc.

#### G 22 Ralston Turner (6-6, Fr., Muscle Shoals, Ala.) 12.4 ppg, 3.3 rpg, 1.8 apg

Turner led the Tigers in scoring vs. Houston (11/30) with 15 points ... Had three treys and hit 6-of-12 field goals in first collegiate game, scoring 21 against NW St. (11/12) ... Six games in double figures ... 17-of-45 from arc (37.8 percent).

#### G 45 Aaron Dotson (6-4, So., Seattle Wash.) 10.7 ppg, 3.0 ppg, 2.4 apg

Dotson, now another season removed from his senior year HS knee injury, continues to impress with 15 points at South Alabama (11/28), including four treys ... 2-2 from arc vs. Houston (11/30) ... 11-of-18 from three line (61.1%) ... Has already scored more points (66-63) and has more treys (11-7) than last year.

#### F 24 Storm Warren (6-7, Jr., Monroe, La.) 7.1 ppg, 6.8 rpg

One of bigger rebound games of career vs. Nicholls (11/16) with 14 ... Had second double double, 11th career, vs. Houston (11/30) with 12 points, 11 rebounds ... Started 40 straight games ... 17-of-30 from field last four games (9.2 ppg those 4).

#### F 5 Malcolm White (6-9, Jr., Baton Rouge, La.) 8.3 ppg, 5.0 rpg

White played his first game in over a year against NW St. (11/12) after transferring from Ole Miss ... Had three blocks and was in double figures (12) ... Led team in scoring against C. Michigan (12/11) ... Had first college double double with 12 points 15 rebounds vs. UTM (11/18) ... 9 offensive rebounds in the contest ... 29-of-58 from the field (50.0%).

### STORYLINES

- The numbers went against LSU in the overtime loss to Coastal Carolina Monday, after shooting 56 percent in the first half of the contest. LSU shot just 12-of-39 the remaining 25 minutes (30.8%) after shooting nearly 50% in the last four games.

- In its three losses, LSU has given up 39 second chance points, while scoring 22 of its own ... Coastal Carolina had 19 second chance points off its 16 offensive rebounds, to LSU's 10 off its 14 offensive boards.

- LSU is now 1-2 in overtime in the

Trent Johnson era.

- The win versus Central Michigan (12/11) was just the fifth for LSU in the Trent Johnson era when trailing with 10 minutes to play (5-27) and 5 minutes to play (5-30) ... With LSU scoring just 59 points, it marked just the third win in 22 games in the Trent Johnson era that LSU has won when scoring less than 60 points.

- In the last two games, LSU has had to make comebacks in regulation play, one from 11 points down to beat Central Michigan over the course of

the final 14 minutes, and a nine point deficit in the final nine minutes to force overtime against Coastal.

- LSU falls to 8-19 when allowing 70 or more points in the Trent Johnson era.

- Starting with tonight's game, every contest the rest of the season will be televised either regionally or nationally ... CST will have the next four games (including picking up the Cox Kansas feed Saturday in Bossier City) and CBS College has picked up the Rice game.

### BREAKDOWN

#### LSU

Record	6-3
Ranking	N/A
Last Game	December 13 in Baton Rouge lost to Coastal Carolina, 78-69 (ot)
Head Coach	Trent Johnson
Career Record	203-152/12th season
LSU Record	44-31/3rd season
vs. McNeese:	2-0

#### McNeese State

Record	6-3
Ranking	N/A
Last Game	December 13 in Lake Charles defeated McNeese, 84-66
Head Coach	Dave Simmons
Career Record	55-74/5th year
MSU Record	55-74/5th year
vs. LSU	0-4

# Upcoming LSU Basketball Media Calendar

## 20

### MONDAY

The Trent Johnson Radio Show, 7 p.m. Tj Ribs on Acadian (LSU Sports Radio Network)

Team makes annual Christmas visit to Our Lady of the Lake Hospital Children's Center, 1 p.m.

## 21

### TUESDAY

**Media Session**  
2 p.m. - Media Room, LSU Practice Facility

**Practice**  
3 p.m. -- Practice Facility or Main PMAC Floor

## 15

### WEDNESDAY

**Media Session**  
2 p.m. - Media Room, LSU Practice Facility

**Practice**  
3 p.m. -- Practice Facility or Main PMAC Floor

## 16

### THURSDAY

Game No. 10  
McNeese State at LSU, 7 p.m. (Maravich Center), TV: CST. Radio: LSU Sports Radio Network (100.7 FM in Baton Rouge).

## 17

### FRIDAY

**Practice**  
Leave for Bossier City.

## 18

### SATURDAY

Game No. 11  
Wichita State vs. LSU, 7 p.m. (CenturyTel Center, Bossier City, La.) TV: CST (picking up Cox Kansas broadcast). Radio: LSU Sports Radio Network (100.7 FM in Baton Rouge).

## 19

### SUNDAY

10:35 p.m. in Baton Rouge -- Debut of Inside LSU Basketball presented by Academy Sports and Outdoors. WBRZ-TV local affiliate. Other affiliates listed at [LSUsports.net/tvaffiliates](http://LSUsports.net/tvaffiliates).

## LSU Media Services

### Media Availability

Coach Trent Johnson is available in his office for early morning appointments and phone interviews. Please contact Basketball SID Kent Lowe (225-578-1864, [clowe@lsu.edu](mailto:clowe@lsu.edu)) at least 24 hours in advance.

### SEC Teleconference

The 12 SEC coaches are featured on a teleconference each Monday, January through March through the conference season. The conference starts at 10 a.m. (CST). Coach Johnson is on at 10:28 a.m. CST. To access the media only number contact Kent Lowe or the SEC Media Relations Office (205-458-3010).

### Media Sessions

Coach Johnson meets with the media two days prior to games, before practice at a time to be announced, in the practice facility meeting room. Some travel and scheduling issues may change the time and day so media should contact the Sports Information Office to confirm start time.

### The Trent Johnson Show

Presented by Capital One Bank

The weekly call-in show takes place Mondays at 7 p.m. from T.J. Ribs on Acadian Thruway ... The show airs in Baton Rouge on local flagship New Country 100.7 FM The Tiger, on the Internet at [www.LSUsports.net](http://www.LSUsports.net) and on many LSU Sports Radio Network affiliates.

### Inside LSU Basketball

Coach Johnson's weekly TV show is on a state-wide network ... WBRZ-TV, Channel 2, airs the show at 10:35 p.m. Sundays beginning on Dec. 19. Television affiliates for the show are listed online at [LSUsports.net/tvaffiliates](http://LSUsports.net/tvaffiliates)

### Player Media Sessions

The players will be available at the media sessions that are normally conducted two days prior to the game. Please let Kent Lowe (225-578-1864, [clowe@lsu.edu](mailto:clowe@lsu.edu)) know which players you would like to have at the media session at least 24 hours in advance.

### Post Game

Coach Johnson will be in the media room of the practice facility after the game and the NCAA cooling off period ... Requested players will be brought to the practice facility media room as well. ... THE LSU DRESSING ROOM IS CLOSED ... To reach the media room, take the Northwest Corridor portal (where the LSU team enters the floor) ... When reaching the multi-purpose room and the glass doors, turn right ... Before reaching the steps, turn left and then take a right down the first hallway to the double wood doors and enter the media room. LSU marshalls will help direct you to the area ... The visiting coach has an interview area (where the pre-game meal is served) that he can use for his post-game media obligations if he wishes.

### WHO TO CONTACT

#### Sports Information Office

(225) 578-8226

**Michael Bonnette** - [mbonnet@lsu.edu](mailto:mbonnet@lsu.edu)

Assoc. AD/Sports Information Director

**C. Kent Lowe** - [clowe@lsu.edu](mailto:clowe@lsu.edu)

Sr. Assoc. Sports Information Director (Basketball Contact)

**Jake Terry** - [jterry9@lsu.edu](mailto:jterry9@lsu.edu)

Associate Sports Information Director (Social Media)

#### LSU Television

Kevin Wagner - [jwagne2@lsu.edu](mailto:jwagne2@lsu.edu)

#### LSU Radio

Jim Hawthorne - [lsuradio@lsu.edu](mailto:lsuradio@lsu.edu)

#### LSU Sports Information Mailing Address

P.O. Box 25095, Baton Rouge, LA 70894

### ON THE INTERNET

#### [www.LSUsports.net/media](http://www.LSUsports.net/media)

The Official Website of LSU Athletics is home to all the basketball information you need. Schedules, results, rosters, bios, statistics and game notes can be found and are always up to date.

#### <http://media.lsusports.net>

Media can access images for all LSU athletic teams, including action shots, heads shots, logos, etc. To gain access to the high-resolution pictures, email Michael Bonnette. You will be assigned a login and password that will enable you to retrieve pictures. This service is for the media use only.

#### [LSUsports.net/media](http://LSUsports.net/media)

Request credentials online, go to the men's basketball link.



### LSU Basketball on Twitter & Facebook

[facebook.com/lsubasketball](http://facebook.com/lsubasketball)

[twitter.com/lsubasketball](http://twitter.com/lsubasketball)

[twitter.com/lసుcoachjohnson](http://twitter.com/lసుcoachjohnson)

[twitter.com/lసుmediaalerts](http://twitter.com/lసుmediaalerts)

[LSUsports.net/connect](http://LSUsports.net/connect)

# Trent Johnson

Head Coach • 3rd year at LSU (12th year as head coach)

Trent Johnson believes the LSU basketball program is moving forward.

With an outstanding recruiting class of student-athletes that fit the LSU program, Johnson is anxious to see this group "be a team" in 2010-11.

As Johnson, the 20th head men's basketball coach at LSU enters his third season, he seeks to build on more than a decade of excellence at LSU, Stanford and Nevada. Having earned Conference Coach of the Year in all three leagues (WAC, Pac-10 and SEC), Johnson and his staff continue toward maintaining LSU basketball as one of the premier programs in the country.

In his first season at LSU, Johnson led the Tigers to 27 wins, tied for the third most wins in a season in LSU history, and won the SEC regular season championships with a record of 13-3. LSU returned to the NCAA Tournament for the first time since 2006, advancing to the second round before falling, 84-70, to North Carolina. In the opening round, LSU defeated nationally-ranked Butler.

Coach Johnson, who eats, sleeps and drinks college basketball year round, believes in both development on the court and also personal, social and academic development. As players grasp his vision for success, they have the opportunity to embrace playing in a face-paced system, executing in the half court and defending and rebounding at a high level.

Johnson has a record of success that continues here at LSU. His team will have to blend together and learn from a coach that is a fierce competitor who exudes and demands toughness.

His devotion to the team, his protective beliefs toward his players and his loyalty to his former players is evidenced by the fact that three of his former players are now members of the LSU basketball staff. Johnson is a program builder and he has re-established the base of the LSU program by visiting with former players and coaches to bring together the past, present and the future of the program.

Johnson also is charged with the development of athletes both on and off the court. Off the court, he is working hard to make sure student-athletes understand the "student" part of their days at LSU. At all three spots in his head coach-

ing career, he has developed not just successful athletes and winning basketball teams, but young men who are having success in life.

In his head coaching career, he has taken teams in seven of the last eight seasons to post-season play, including five NCAA appearances. In addition, Johnson has seen six of his former assistant coaches become head coaches at successful programs.

Johnson has been rewarded as the consensus SEC Coach of the Year and was a finalist for four national coach of the year honors as he became the first LSU men's basketball coach to win the league title and take the team to post-season play in his first year at the school.

Under Johnson's watch, he has already coached an SEC POY in Marvyn Thomas who now plays for the NO Hornets, Garrett Temple who is in his second year in the NBA with the San Antonio Spurs and Tasmir Mitchell, who finished his career as the third all-time leading scorer and sixth all-time rebounder in school history.

Thornton, Temple and Mitchell represent Johnson's ability to teach and mold a well-rounded basketball player into having both a good offensive and defensive presence that can benefit the team and provide a chance to play at the next level.

Johnson has always been a big believer in special causes and joined former LSU basketball coach Dale Brown and star center Shaquille O'Neal in cutting series of commercials that aired nationally for the "Be A Match" organization in support of bone marrow donors.

This past June, Johnson was part of a 10-day trip to Africa as part of the TRIAD Trust program that was established to stop the transmission of HIV through culturally relevant, locally sustainable health and life skills education-based programs in communities affected by HIV/AIDS.

He also is a member of the Board of Directors of the National Association of Basketball Coaches and has served on the NABC Special Committee on Recruiting and Access.

Johnson, who was born in Berkeley, Calif., and call Seattle, Wash., his home, is married to Jackie and they have two children: a daughter, Tinishia, 27, and a son, Terry, 24.



## The Johnson File

**NAME:** Trent Johnson  
**BIRTH DATE:** September 12, 1956  
**AGE:** 54  
**BIRTHPLACE:** Berkeley, Calif.  
**HOMETOWN:** Seattle, Wash.  
**WIFE:** Jackie  
**CHILDREN:** Tinishia (27), Terry (24)  
**COLLEGE:** BS, Boise State University, 1986

## PLAYING EXPERIENCE

**Boise State University (Boise, Idaho)**  
 Finished in the top 10 in career scoring and rebounding at the school ... In 1976, team advanced to NCAA Tournament after winning the Big Sky Tournament ... In his junior year, named the Most Improved Player and in his final season was named All-Big Sky.

## COACHING EXPERIENCE

**1986-89** - Assistant Coach, Utah  
**1989-92** - Assistant Coach, University of Washington  
**1992-96** - Assistant Coach, Rice  
**1996-99** - Assistant Coach, Stanford  
**1999-04** - Head Coach, University of Nevada ... Compiled a 79-74 overall record ... 2003 team went to NIT, 2004 team won WAC Tourney and advanced to the NCAA Sweet 16.  
**2004-08** - Head Coach, Stanford ... Four year record of 80-47 ... Team advanced to post-season play each of his four years, 2008 team won 28 games and advanced to the NCAA Sweet 16.  
**April 10, 2008** -- Named the 20th Head Basketball Coach at LSU.  
**2008-09** -- LSU wins the SEC title with 13-3 record, finishes 27-8 and advances to the second round of NCAA Tournament to push mark to seven straight years of coaching teams to post-season play.  
**Nov. 24, 2010** -- Won his 200th game as a collegiate head coach (78-36, vs. Centenary).

## LEAGUE COACH OF THE YEAR HONORS

**2003** -- Western Athletic Conference  
**2008** -- Pac-10  
**2009** -- Southeastern Conference

## The Trent Johnson Record

YEAR	SCHOOL	/---OVERALL---/		/---CONF.---/		FINISH
		W-L	PCT.	W-L	PCT.	
1999-00	Nevada	9-20	.310	6-10	.375	3rd-Big West
2000-01	Nevada	10-18	.357	3-13	.187	9th-WAC
2001-02	Nevada	17-13	.567	9-9	.500	5th-WAC
2002-03	Nevada	18-14	.562	11-7	.611	4th-WAC NIT First Round
2003-04	Nevada	25-9	.735	13-5	.722	1st WAC/Tourney Champ; NCAA Sweet 16
2004-05	Stanford	18-13	.581	11-7	.611	4th-Pac 10/NCAA First Round
2005-06	Stanford	16-14	.533	11-7	.611	5th-Pac 10/NIT Second Round
2006-07	Stanford	18-13	.581	10-8	.555	6th-Pac 10/NCAA First Round
2007-08	Stanford	28-7	.800	13-5	.722	2nd-Pac10/NCAA Sweet 16
<b>2008-09</b>	<b>LSU</b>	<b>27-8</b>	<b>.771</b>	<b>13-3</b>	<b>.812</b>	<b>1st-West, SEC Champs, NCAA 2nd rd.</b>
<b>2009-10</b>	<b>LSU</b>	<b>11-20</b>	<b>.354</b>	<b>2-14</b>	<b>.125</b>	<b>6th-West</b>
<b>2010-11</b>	<b>LSU</b>	<b>6-3</b>	<b>.667</b>			
<b>Totals</b>	<b>12 Years</b>	<b>203-152</b>	<b>.572</b>	<b>102-88</b>	<b>.536</b>	<b>7 tournaments, 2 NCAA Sweet 16</b>
	<b>Nevada</b>	<b>5 Years</b>	<b>79-74</b>	<b>.516</b>	<b>.488</b>	<b>1 WAC title, 1 NCAA Sweet 16</b>
	<b>Stanford</b>	<b>4 Years</b>	<b>80-47</b>	<b>.630</b>	<b>.625</b>	<b>4 tournaments, 1 NCAA Sweet 16</b>
	<b>LSU</b>	<b>3 Years</b>	<b>44-31</b>	<b>.587</b>	<b>.469</b>	<b>1 SEC Title, 1 NCAA 2nd Rd.</b>

## CAREER SPECIALTY NUMBERS

### CAREER DOUBLE-FIGURE GAMES

Storm Warren 23  
 Andre Stringer 8  
 Aaron Dotson 7  
 Ralston Turner 6  
 Dennis Harris 5  
 Malcolm White 4  
 Matt Derenbecker 1

### CAREER DOUBLE-FIGURE REBOUNDS

Storm Warren 12

### CAREER DOUBLE-DOUBLES

Storm Warren 11  
 Malcolm White 1

### CAREER THREE-POINTERS

Andre Stringer 21  
 Aaron Dotson 19  
 Ralston Turner 17  
 Chris Bass 10  
 Daron Populist 7  
 Matt Derenbecker 7  
 Dennis Harris 5  
 Garrett Green 3

### CAREER ASSISTS

Chris Bass 161  
 Aaron Dotson 51  
 Eddie Ludwig 28  
 Andre Stringer 26  
 Storm Warren 23  
 Ralston Turner 16  
 Daron Populist 15  
 Dennis Harris 14  
 Garrett Green 13  
 Matt Derenbecker 8  
 Malcolm White 2

### CAREER BLOCKS

Storm Warren 71  
 Garrett Green 18  
 Aaron Dotson 17  
 Dennis Harris 15  
 Malcolm White 11  
 Chris Bass 7  
 Eddie Ludwig 3  
 Ralston Turner 1  
 Malcolm Derenbecker 1  
 Andre Stinger 1

### CAREER STEALS

Storm Warren 59  
 Chris Bass 35  
 Eddie Ludwig 22  
 Garrett Green 20  
 Aaron Dotson 17  
 Andre Stringer 13  
 Dennis Harris 10  
 Ralston Turner 6  
 Malcolm White 3  
 Daron Populist 1  
 Matt Derenbecker 1

## 2010-11 LSU Men's Basketball Roster

NO.	NAME	CL.	POS.	HT.	WT.	EXP.	HOMETOWN/LAST SCHOOL
3	Garrett Green	Jr.	F	6-11	230	2VL	Woodland Hills, Calif/Taft HS
4	Chris Bass	Jr.	G	6-1	185	2VL	Baton Rouge, La./Lee Academy (Ma.)
5	Malcolm White	Jr.	F	6-9	225	RS	Baton Rouge, La./Ole Miss
10	Andre Stringer	Fr.	G	5-9	170	HS	Jackson, Miss./Forest Hill HS
13	Eddie Ludwig	So.	F	6-9	215	1L	Metairie, La./Metairie Park Country Day
14	Jalen Courtney	Fr.	F	6-8	210	HS	Jackson, Miss./Provine HS
15	Dennis Harris	So.	F	6-11	190	1L	Jonesboro, Ga./Mundy's Mill HS
21	Matt Derenbecker	Fr.	F	6-7	185	HS	Metairie, La./Metairie Park Country Day
22	Ralston Turner	Fr.	G	6-6	193	HS	Muscle Shoals, Ala./Muscle Shoals HS
24	Storm Warren	Jr.	F	6-7	230	2L	Monroe, La./Richwood HS
25	Daron Populist	So.	G	5-10	170	1L	Slidell, La./Salmen HS
41**	Justin Hamilton	Jr.	C	6-11	260	TR	Alpine, Utah/Iowa State
45	Aaron Dotson	So.	G	6-4	205	1L	Seattle, Wash./Rainier Beach HS
55**	Andrew Del Piero	So.	C	7-2	286	RS	Austin, Texas/Westlake HS

\*\*redshirt in 2010-11 after transferring from Iowa State; \*\*redshirt in 2010-11

**Head Coach:** Trent Johnson (Boise State, '86), 3rd year at LSU

**Assistant Coach:** Donny Guerinoni (Nevada, '01), 3rd year at LSU

**Assistant Coach:** Lynn Nance (Washington, '65), 1st year at LSU

**Assistant Coach:** Brent Scott (Rice, '03), 3rd year at LSU

**Director of Basketball Operations:** Nick Robinson (Stanford, '05), 2nd year at LSU

**Executive Asst. to Head Coach:** Brittany Carvalhido (Oklahoma State, '05), 1st year LSU men, 3rd year at LSU

### A High School Correction

We must make note that there is a mistake in the written media guide publications on the high school of LSU's Andre Stringer ... He is actually from Forest HILL High School in Jackson, Miss., not Forest Park as appears in the guide ... He is one of two players from Jackson as Jalen Courtney came to LSU from Provine High.

### Transactions

Center Andrew Del Piero was redshirted prior to the beginning of the season ... Dennis Harris sprained his left ankle the week of the season opener ... Missed the first seven games, but returned against Central Michigan (12/11).

### The Numbers Game

Here are some of the important numbers with the LSU basketball program:

**103** - This is the 103rd season of basketball at LSU.

**32-4** - LSU record in Trent Johnson era when scoring at least 70 points.

**3-19** -- Central Michigan win was team's third when scoring less than 60 in the Trent Johnson era (59-55)

**1-2** -- LSU record in overtime in Trent Johnson era (0-1 this season, C. Carolina, 12/13)

**5** -- No of wins in the Trent Johnson era when LSU trailed both at the 10 and 5 minute marks (last Central Michigan, 12/11)

**1** -- One loss in Trent Johnson era when LSU scores at least 80 points (Aub, 1/20/10)

**11** -- Number of career double doubles by Storm Warren (two this season)

**1999** -- Last time a freshman scored at least 21 points in a season opener for LSU (Ralston Turner and Andre Stringer -- 2010-11; Ronald Dupree vs. Grambling in opening game of 1999-00 season.)

**10-0** -- Record when LSU shoots 50 percent or better in the Trent Johnson era (3-0 this year)

**7** -- Number of times LSU has won when outrebounded in Trent Johnson era (7-19 record)

**35-11** -- Record when LSU out rebounds opponent, but two losses this year (Nicholls, Memphis).

**40-5** -- Record when LSU out shoot opponents.

**1403** -- Number of LSU wins in program history (1,400 came 11/24 vs. Centenary)

**6** -- Number of SEC titles LSU has won since 1980 (second most in SEC)

**3** - Number of SEC Championships won or shared since 2000 (2000, 2006, 2009)

**10** -- Number of SEC championships LSU has won, second most in league.

### Last Game - Coastal Carolina 78, LSU 69 (ot) (December 13 -- Baton Rouge)

The Tigers tried to come back from a big deficit for the second straight game but could only manage to force the game to overtime this time before falling to Coastal Carolina ... LSU fell behind by nine as Coastal went on a 14-0 run to go up 50-41 with 11:22 to play in regula-

tion ... Like Saturday, when LSU was down 11 to Central Michigan, the Tigers rallied, tying the game back for the first time at 60-60 with 2:09 to play on a Malcolm White dunk ... LSU could never get the lead, fell behind by four, and tied the game at 64-64 with eight seconds to play on a Storm Warren put back ... In the overtime, Coastal got two treys and built a 74-66 lead with 2:06 to go in the extra session, outscoring LSU, 14-5.

Andre Stringer led the Tigers for the seventh time this season with 16 points, including four treys for the fourth time this season and also had five assists in the game ... Ralston Turner had 15 points ... Garrett Green had a career high nine points in 20 minutes of play.

### Numbers From the Game

LSU is now 1-2 in overtime in the Trent Johnson era and 18-17 in home overtime games ... It was the first overtime game at home since Jan. 19, 2005, a 66-63 win over Arkansas ... The loss snapped a string of four overtime wins in the PMAC ... LSU is now shooting 37.7 percent (60-159) and 18-55 from the arc in the three games it has lost, compared with 49.7 percent (151-304) and 40-93 (43.5%) from the arc in the six wins ... LSU is also out rebounds 37.0-35.7 in the three losses with seven more turnovers and opponents have 12 more steals ... LSU is just 8-19 when allowing 70 points or more in a game ... Ironically, LSU has had the lead in all three of its losses this year - The Tigers were up 25-21 at the half against Nicholls, up 34-33 in the game with Memphis and, up five, 35-30, against Coastal Carolina ... LSU was out score d13 in the second half by Nicholls, 10 by Memphis and nine by Coastal Carolina ... In those three games, LSU was 25-of-85 from the field in the second half (29.4 percent) compared to 38-of-84 (45.2 percent) for opponents.

The Coastal Carolina game also snapped a streak of seven straight games with more rebounds ... LSU is 7-19 in the Trent Johnson era when out rebounded.

### Heading Toward a "Neutral" Home Game

The game with Wichita State is the final game of a three-game contract between the two schools that was presented to the two teams by a promoter beginning in the 2006-07 season ... LSU and Wichita State met in November 2006 in Baton Rouge and then in December 2007 in Wichita ... With the coaching change at LSU prior to the 2008-09 series, the final game of the contract was delayed and is now taking place at the CenturyTel Center in Bossier City on Saturday night at 7 p.m.

### CST Adds Wichita Game; Every Thing On TV From Here On

With Cox Sports Television deciding to add the Cox Kansas broadcast of the LSU-Wichita State game Saturday from the CenturyTel Center in Bossier City, it means two things: 1) CST will have coverage of the next four games through Dec. 27 of the Tigers and 2) as the second-year of the Southeastern Conference's 15-year agreement with the ESPN family of networks, every game from here on out for the remainder of the season will be televised on some regional or national basis ... LSU's game at Rice (Dec. 29) has been picked up by CBS College Sports and LSU will make its first appearance on ACC Sunday Night Hoops on Jan. 2 on FSN at Virginia.

Once conference play starts, LSU has nine games on the regionally-syndicated SEC Network, three on FSN, two on CSS/CST and two on ESPN.

### About McNeese State, The Series

The Cowboys from Lake Charles come in with a 6-3 record with six home wins, including Monday night's 84-66 win over SW Assemblies of GOD ... McNeese also has wins over Georgia State, Louisiana College, Louisiana-Lafayette, Jarvis Christian and Louisiana Tech ... Its three losses are at Washington, at Southern Miss and at Miami ... In Monday night's game, Patrick Richard led McNeese with 21 points and five steals, while Dontae Cannon added 10. P. J. Alawoya off the bench had 13 rebounds as no McNeese player played more than 27 minutes ... McNeese shot 44.2 percent with just eight turnovers (forcing 21) but SW Assemblies out rebounded the Cowboys, 50-37.

The teams will be meeting for the 20th time since the series started on Dec. 6, 1986 in Lake Charles with LSU winning 77-62. The other 18 meetings have all been in the PMAC and LSU leads the series, 19-0.

Dave Simmons is in his fifth year as the head coach of the Cowboys ... Simmons is well-known throughout the state for his time also at Northwestern State, a prior stint as a McNeese assistant and at Louisiana Tech ... Simmons is a member of the Louisiana Basketball Hall of Fame and played at Louisiana Tech, scoring more than 1,500 points from 1977-81.

## CAREER DOUBLE-DOUBLES

### STORM WARREN (11)

Game	Date	Pts	Reb
Alcorn State	11/20/08	11	11
ULM	11/13/09	15	12
Indiana State	11/16/09	14	12
Western Ky.	11/17/09	20	11
UL-Laf.	12/1/09	18	16
N'wesern st.	12/12/09	21	16
SE Louisiana	12/14/09	14	12
Nicholls	12/17/09	13	11
Auburn	1/20/10	17	11
UT-Martin	11/18/10	12	11
Houston	11/30/10	12	11

### LSU Scoring Runs

5-0	14
6-0	10
7-0	6
8-0	4
9-0	3
10-0	1
11-0	2 (UTM, C. Mich)
12-0	
13-0	
14-0	1 (Centenary)
15-0	

### Opp. Scoring Runs

5-0	8
6-0	6
7-0	6
8-0	4
9-0	1
10-0	
11-0	1 (C. Mich)
12-0	
13-0	
14-0	1 (C. Carolina)
15-0	

## COMPARING THE STATISTICS

Overall	LSU	MSU
Scoring Average	71.0	74.7
Opp. Scoring Average	61.9	75.6
Scoring Margin	+9.1	-0.9
FG Percentage	45.6	42.1
Opp. FG Percentage	37.8	44.7
3 PT FG Pct.	39.5	38.1
Opp. 3 PT FG Pct.	31.4	34.0
3FGs per Game	6.4	7.4
FT Percentage	69.1	69.3
Opp. FT Percentage	64.6	63.3
FT Made Per Game	17.7	18.3
Rebound Avg.	37.6	34.8
Opp. Rebound Avg.	32.8	41.0
Rebound Margin	+4.8	-6.2
Assists Average	12.8	10.6
TO Average	16.0	13.6
Blocks Average	4.1	2.3
Steals Average	7.2	7.6

### Season 40 At PMAC

It was the 1971-72 season that the first game was played in the then LSU Assembly Center, although the Tigers had to open on the road for the first five games before returning home to open the building on Jan. 3, 1972 against Vanderbilt, an 80-73 loss. The Tigers got their first win in the building on Jan. 6, 1972 against Georgetown, 90-71.

Last year, LSU was 11-7 in the Maravich Center, 9-1 in non-conference games ... LSU is 5-2 this season and 458-156 (74.6) all-time in the building and 245-35 in non-conference games (.878) ... Trent Johnson is 26-4 in home non-conference games.

### Success At Home

The PMAC has proved to be a difficult place to play as since the start of the 2002-03 season, LSU has won 113 games, an average of 13.6 wins per year. LSU's win total is second only to Florida in the same time period (through play on Monday):

Florida 126  
**LSU 113**  
 Vanderbilt 106  
 Kentucky 104  
 Tennessee 103  
 Alabama 98  
 Arkansas 96  
 Mississippi State 94  
 South Carolina 90  
 Auburn 87  
 Ole Miss 87  
 Georgia 80

### On The Road

The win by the Tigers at South Alabama on Nov. 28 marked the first win on an opponent's home court since the Tigers beat Kentucky on Feb. 28, 2009 ... Between home and neutral courts a year ago, LSU was 0-13, compared to the championship year of 2009 when LSU was 8-6, including 6-3 in SEC play ... LSU's last "neutral" court win was its first round NCAA win over Butler in March 2009 ... In program history, LSU is 401-569 on opponent's home courts ... Trent Johnson is 7-12 in true road games and 9-20 in all games away from the Maravich Center.

### LSU Second In SEC Titles Over Last 30 Years

LSU has won 10 Southeastern Conference titles in its first 102 seasons and six of those have come since the 1980-81 seasons, which is second only to the 12 that Kentucky has won during that time period. Florida is third with four. Tennessee (3), Mississippi State (2), Alabama (2) and Arkansas (2) are the only ones with multiple conference regular season titles in that time period.

### Good Nights Shooting

Three times this season, LSU has been able to shoot at least 50 percent from the field ... The first came in the opening game of the season (Nov. 12) against Northwestern State when LSU shot 60 percent (24-of-40) ... It was a consistent performance as LSU was 13-of-22 in the first half (59.1 percent) and 11-of-18 (61.1 percent) in the second half ... It marked the first time LSU shot 60 percent from the field since shooting 63.6 percent against Grambling State on Dec. 13, 2008 ... LSU's 32 free throw makes in the game were the seventh most free throw makes in LSU history.

At South Alabama (11/28), LSU was 16-of-24 in the first half to propel a 25-of-47 shooting game (53.2 percent) ... LSU was 12-of-17 from the three-point arc and shot 70.6 percent, the best percentage LSU shot since 2006 ... LSU was 10-of-13 in the first half and 2-of-4 in the second 20 minutes.

LSU made it two straight games at 50 percent or better against Houston (11/30), making 17-of-30 in the first half enroute to a 26-of-52 night (50.0%).

The Tigers are now 3-0 this year when shooting 50 percent or better and 10-0 overall in the Trent Johnson era.

LSU is fifth in the SEC in field goal percentage (45.6 percent) and LSU is third in field goal percentage defense in the league at 37.8 percent.

### The Arc

LSU feel below 40 percent from the three-point line for the season after going 7-of-22 (31.8%) against Coastal on Monday night ... The Tigers are 58-of-147 of 39.5 percent, behind

only Kentucky who is the only team over 40 percent at 40.3 going into the next game.

LSU has made an average of 6.4 treys a contest, an improvement from last season when LSU made 141 threes (an average of 4.5 a game) ... LSU made just 28.7 percent a year ago from the arc ... Last year, Aaron Dotson as a freshman made seven treys ... Through nine games, he has 11; in fact, he is 11-of-18 for the season ... Andre Stringer has made 21, Turner 17 ... The threesome of Stringer, Turner and Dotson have made 49 of LSU's 58 treys ... Dotson's three-point shooting percentage is seventh in the league.

The South Alabama game, with LSU making 70.6 percent, marked the first time LSU had hit 70 percent in a game since Jan. 7, 1989 when LSU was 7-of-9 from the three-point line against Auburn (77.8 percent).

### The Free Throws Helped Win Last Saturday

LSU was 4-of-10 from the free throw line, trailing Central Michigan and struggling in a half-court game ... But LSU began to get to the line in the later stages and the free throws started dropping, finishing 16-of-22 (72.7%) ... LSU couldn't quite get that against Coastal on Monday, making just 10-of-17 and dropping LSU's season percentage to 69.1 percent (159-230) ... LSU has been to the line 24 more times than opponents and has 26 more makes ... LSU is sixth in the league in free throw percentage (69.1%).

Eddie Ludwig leads the team at 87.5 percent (21-of-24), with Stringer, thanks to making 17-of-18 in the last three games, is now at 82.8 percent. Aaron Dotson has made 29-of-39 or 74.4 percent. Ludwig is fifth in the league in free throw percentage, Stringer eighth.

### 1,400 And Counting

When LSU defeated Centenary on Nov. 24, the Tigers won their 1,400th game in the history of the basketball program that began in January 1909 ... LSU was at that time the 47th program in the modern basketball Division I to have won at least 1,400 games in its history.

### Player Efficiency Quota

Like the quarterback ratings in the NFL, the NBA uses an efficiency scale to determine its top players ... It's the plus or minus number coaches look at when determining the success of a players game night ... The quotient is based on a plus-minus + total of: (Points + Rebounds + Assists + Steals + Blocks) minus ((Field Goal Attempts - Field Goals Made) + (Free Throw Attempts - Free Throws Made) + Turnovers) ... Here is what the crack research staff at LSU came up with when applying the formula to some of the LSU players and their efficiency quota average coming into Thursday's game with McNeese:

**Storm Warren - +12.0**

**Andre Stringer - + 11.8**

**Aaron Dotson -- +10.9**

**Ralston Turner -- +9.9**

**Malcolm White -- +9.0**

**Eddie Ludwig -- +6.5**

**Garrett Green -- +5.9**

The figure also comes into played in individual game totals for example against Houston (11/30), Storm Warren was a +24, but Aaron Dotson had the best single game total of the young season with a +25 against Memphis (11/21) ... In the game where Andre Stringer was MVP of the Coors Classic at South Alabama, he recorded a +22 (11/28).

### Healthy Aaron Dotson

Hard work and patience has paid off for the Seattle sophomore as he has been able to play with confidence and full speed this season ... A knee injury at Rainier Beach HS that caused him to miss most of his senior season after signing with LSU and it shook his confidence as a college freshman ... Fans are now seeing what coaches saw in practices and scrimmages from day one this year how far he has come ... Against Northwestern State (11/12), Dotson hit 5-of-5 field goals (one of only two players in the SEC to be perfect from the field on opening night) and scored 17 points in 27 minutes of play ... Against UT-Martin, Dotson hit 4-of-8 field goal attempts and 5-of-6 at the line to get 13 points and six rebounds in 19 minutes ... Against Memphis (11/21), Dotson scored 12 points and had one of the rare four-point plays with a long three-pointer and a free throw ... He has been in double figures in four of the games this season and hit 28-of-54 overall from the field and 11-of-18 from the arc, averaging 10.7 points a game.

## TIGER TRENDS

LSU RECORD...	10-11	COACH J.ERA
In November	5-2	13-4
In December	1-1	12-4
In January		7-11
In February		9-7
In March		3-5
In April		
<b>LSU vs. AP Ranked Opponents</b>		
At home		0-4
On the road		0-1
Neutral	0-1	1-3
<b>LSU's Record in Games...</b>		
Decided by 5 pts or less	1-0	10-5
Decided by 10 pts or less	2-3	17-17
Decided by 11 pts or more	4-0	27-14
At night	5-2	32-17
During the day	1-1	12-14
Decided in Overtime	0-1	1-2
Televised	3-1	22-27
<b>LSU's Record When Scoring...</b>		
Less than 60 points	1-1	3-19
60-69 points	0-2	9-8
70-79 points	3-0	16-3
80-89 points	2-0	12-1
90-99 points		4-0
100 or more points		
<b>LSU's Record When Allowing...</b>		
Less than 60 points	4-0	18-3
60-69 points	1-1	18-9
70-79 points	1-2	7-11
80-89 points		0-7
90-99 points		1-1
100 or more points		
<b>LSU's Record When...</b>		
Leading at the half	6-3	34-11
Losing at the half		7-21
Tied at the half		3-2
Lead 10 minutes left	5-0	37-3
Losing 10 minutes left	1-3	5-27
Tied 10 minutes left		2-1
Lead 5 minutes left	5-0	38-1
Losing 5 minutes left	1-3	5-30
Tied 5 minutes left		1-0
<b>LSU's Record When Shooting...</b>		
50% or higher	3-0	10-0
Less than 50%	3-3	34-31
Better than opponent	6-1	40-5
Worse than opponent	0-2	4-26
Even Shooting		
More 3PT FGs than opp.	2-1	18-5
<b>LSU's Record When...</b>		
Outrebounding opp.	5-2	35-11
Outrebounded by opp.	1-1	7-19
Equal rebounds		2-1
<b>LSU's Record When Committing...</b>		
Fewer TO than opp.	2-1	25-12
More TO than opp.	4-1	15-15
Equal TO	0-1	4-4
15 or fewer TO	3-1	29-24

## TRENT JOHNSON ERA INDIVIDUAL SUPERLATIVES

### Points

1. 41 Tasmin Mitchell - at Miss. St. (2-11-09)
2. 38 Tasmin Mitchell - vs. Aub. (1-20-10)
3. 33 Marcus Thornton - vs. SE La (1-3-09)
4. 32 Marcus Thornton - vs. Fla. (2-24-09)
5. 31 Marcus Thornton - vs. Miss. St. (1-21-09)
6. 30 Marcus Thornton - 3 times
6. 30 Tasmin Mitchell - vs. SC (1-14-09)

### FG Made

1. 15 Tasmin Mitchell - vs. Aub (1-20-10)
2. 12 Tasmin Mitchell - at Miss. St. (2-11-09)
2. 12 Tasmin Mitchell - at Georgia (2-4-09)
4. 11 Tasmin Mitchell - vs. Nicholls (12-17-09)
4. 11 Marcus Thornton - at Georgia (2-4-09)
4. 11 Marcus Thornton - at SE La. (1-3-09)
4. 11 Marcus Thornton - vs. UL-Laf (12-31-08)

### 3FG Made

1. 6 Marcus Thornton - vs. Florida (2/24/09)
2. 5 Marcus Thornton - twice
2. 5 Bo Spencer - twice
6. 4 Andre Stringer - four times
6. 4 Aaron Dotson - at S. Alabama (11/28/10)
6. 4 15 other times

### FT Made

1. 15 - Tasmin Mitchell - vs. Miss. St (2-11-09)
2. 12 - Marcus Thornton - Auburn (2-21-09)
3. 11 - Andre Stringer - vs. Houston (11/30/10)
3. 11 - Tasmin Mitchell - NW State (12-12-09)
5. 10 - Marcus Thornton - Florida (2-24-09)
5. 10 - Tasmin Mitchell twice

### Rebounds

1. 18 Tasmin Mitchell - vs. SE La. (12-14-09)
2. 17 Tasmin Mitchell - vs. Tennessee (2-4-10)
3. 16 Storm Warren - vs. NW State (12/12/09)
3. 16 Storm Warren - vs. UL-Laf (12-1-09)
5. 15 Malcolm White - vs. UT-Martin (11/18/10)
5. 15 Tasmin Mitchell - Cal St Full (12/2/08)

### Assists

1. 9 Garrett Temple - vs. Ole Miss (2/14/09)
1. 9 Garrett Temple - vs. Ole Miss (1/17/09)
3. 7 Garrett Temple - vs. Cal St Full (12/2/08)
4. 6 Bo Spencer - vs. Florida (2/24/09)
4. 6 Garrett Temple - 4 times
4. 6 Chris Bass - 4 times

### Blocks

1. 7 Chris Johnson - vs. Arkansas (1/31/09)
2. 6 Chris Johnson - twice
4. 5 Chris Johnson - Nicholls State (12/17/08)
5. 4 Chris Johnson - 10 times
5. 4 Storm Warren - vs. Houston (11/30/10)

### Steals

1. 7 Marcus Thornton - vs. Arkansas (2/18/09)
2. 6 Tasmin Mitchell - vs. UL-Laf (12/31/08)
2. 6 Garrett Temple - twice
5. 5 Tasmin Mitchell - vs. Kentucky (2/28/09)
5. 5 Garrett Temple - vs. Xavier (1/24/09)
5. 5 Bo Spencer - vs. S. Carolina (1/14/09)
5. 5 Storm Warren - vs. Arkansas (2/24/10)
5. 5 Chris Bass - NW State (11/12/10)

### Bass Turning Assist Numbers

The junior, whose brother Brandon, was 2005 SEC Player of the Year and plays now for the NBA Orlando Magic, last year was one of the tops in the SEC in assist-to-turnover ratio with 97 assists and just 38 turnovers ... After struggling in the first two games, Bass is turning the numbers back in his favor with 21 assists and 13 turnovers ... In his career, Bass has 161 assists and 66 turnovers.

### Andre Stringer

The freshman from Jackson had a unique streak of being the Tigers top scorer in each of the first six games and double figures for the first seven ... He leads the team in scoring at 15.2 points per game (ninth in the league), having made 21 three-pointers, including four games with four each ... Stringer is also good at getting to the line, averaging 6.4 free throw attempts a game ... He is averaging 27.3 minutes a game, 2.1 rebounds and 2.9 assists a contest ... And, if that isn't enough, on Nov. 28 at South Alabama, the 5-9 point guard was credited with his first block of his college career.

### The Other Freshmen Contributing

The Tigers had all four freshmen on the floor in the opener with Northwestern State, one as a starter in Ralston Turner, while Andre Stringer, Jalen Courtney and Matt Derenbecker came off the bench ... Turner played 38 minutes, scoring 21 points with five rebounds, two assists and two steals ... Turner was one of three players on opening night in the league to play 38 minutes ... Stringer came off the bench to play 25 minutes at point guard, also scoring 21 points ... Both Turner and Stringer hit half their field goal attempts (Turner 6-of-12, Stringer 5-of-10) ... The two of them combined to make all of LSU's seven three-pointers.

Courtney scored two points in three minutes, while Derenbecker played six minutes. Derenbecker had his big game in the Nicholls State contest (11/16) with 14 points and six boards.

In game three, the two freshman started as Stringer moved into the starting lineup.

Freshman players on the LSU team have accounted for 46.1 percent of LSU's scoring and they have had 15 of LSU's 25 double figure scoring games this season (Stringer 8, Turner 6, Derenbecker 1).

### Storm Warren

The veteran member of this team without a senior as far as starts and playing time, Warren has started 40 consecutive games dating back to last year and broke out of mini-scoring drought getting nine points against South Alabama on Nov. 28 ... He then had his second double double at home against Houston (11/30) with 12 points and 11 rebounds ... In the last three games, Warren is 13-of-24 from the field and 3-of-4 from the line ... He now has 11 career double doubles, two this season ... The other came against UT-Martin (11/18) when he also had 12 points and 11 rebounds ... He had one of his double doubles as a freshman, eight last season and now two as a junior ... He was two off his career high in boards when he pulled down 14 against Nicholls State (11/16) ... He is averaging a team best 6.8 rebounds a game this season.

### Malcolm White

White became the 38th player in LSU history to grab at least 15 rebounds in a game, hitting that number against UTM (11/18) in recording his first collegiate double double ... White, who played at Ole Miss for two seasons, before transferring and sitting out last year under NCAA transfer rules, had 12 points, 15 rebounds and three blocks in 31 minutes ... White had his fourth double figure scoring game of the season against Central Michigan, leading the team with 12 points (12/11).

### Garrett Green

Green is probably the healthiest he has been at LSU, fighting back problems all through his career ... Twice after scoring eight points off the bench against Memphis (11/21) and Centenary (11/24), he came back and just missed his first double digit scoring game with nine points in 20 minutes against Coastal Carolina (12/13) ... He was four-of-six from the field ... He is averaging 4.0 points and 4.8 rebounds a game so far this year.

### Dennis Harris

Harris, who has been and continues to battle a sprained left ankle, got on the floor against Central Michigan (12/11) to start his sophomore season, playing six minutes and hitting his first field goal attempt of the season ... Last year, Harris played in 29 games, starting nine, and averaged 4.6 points and 3.1 rebounds.



## Six Former Tigers Playing In NBA This Season

When the NBA season got underway, there were seven former LSU players on rosters. That number is now six as the San Antonio Spurs recently waived Garrett Temple. Here are the six players and the teams they play on;

**Brandon Bass, Orlando Magic – 2nd season with Orlando, sixth in NBA**

**Glen Davis, Boston Celtics – 4th season with Boston**

**Shaquille O’Neal, Boston Celtics – 1st season with Boston, 19th in the NBA**

**Anthony Randolph, New York Knicks – 1st season with Knicks, 3rd in the NBA**

**Tyrus Thomas, Charlotte Bobcats – 1st full season with Charlotte, fifth in NBA**

**Marcus Thornton, New Orleans Hornets – 2nd season with Hornets**

The NBA D-League play is underway and former LSU point guard Randy Livingston is beginning his first season as the head coach of the Idaho Stampede. Rookie Tasmin Mitchell is playing for the Erie Bayhawks, while Darnell Lazare is on the roster of the Maine Red Claws. Lazare was a member of the 2006 Final Four team. Chris Johnson is on the roster for the Dakota Wizard and Temple, who started with the Spurs, is back with the Rio Grande team in the league.

## LSU Adds Two Important Signees During Early Signing Period

Coach Trent Johnson announced on Wednesday that the LSU athletics department had received and approved two National Letters of Intent from players for the 2011-12 men’s basketball season.

The players are John Isaac, a 6-4, 215-pound guard from New Llano, La., who attends Pickering High School; and, Johnny O’Bryant, a 6-9, 245-pound power forward from Cleveland, Miss., and East HS.

“It is a good day for Tiger basketball,” said Coach Johnson. “Obviously, these are two quality young men who happen to be very, very good basketball players. They fit into the direction in which our program is headed, and that means playing elite level college basketball.”

Isaac missed all of last season with a torn left ACL, but as a sophomore he averaged a double double with 18.5 points and 11.5 rebounds. He shot 59 percent from the field and averaged 8.6 assists and 1.8 steals. He was First-Team All-District that year in his fourth season of varsity competition for Pickering. He has been a starter on the Pickering varsity since the seventh grade.

O’Bryant is the nation’s No. 6 ranked power forward by ESPNU (21st overall in the country) and the No. 8 power forward and nation’s 38th player overall according to Rivals.com.

He averaged 15 points and 7.2 rebounds last season as a junior as East reached the Class 3A semifinals. Two years ago, O’Bryant was a member of the USA Basketball U16 team that captured gold in Mendoza, Argentina at the FIBA Americans Championship and followed that up with another gold medal in Hamburg, Germany with the U17 national team.

## Tigers Invited to 2011 Charleston Classic

The LSU men’s basketball team will be part of the eight-team field for the 2011 Charleston Classic to be contested Nov. 17, 18 and 20, 2011.

The field for the fourth annual tournament in addition to the Tigers includes Georgia Tech, Saint Joseph’s, Seton Hall, Tulsa, Virginia Commonwealth, Western Kentucky and Baylor.

The 2011 Charleston Classic, a bracket-format tournament, will feature 12 games over the three days. Each team will compete in one game per day, advancing through a bracket-tournament format. The two teams that remain undefeated throughout will face off in a championship match Sunday, Nov. 20, 2011.

## Next Up – Off to Bossier City for Saturday

The Tigers will play a “neutral court” home game in Bossier City Saturday night at 7 p.m. at the CenturyTel Center ... The game will be televised by Cox Kansas and will now be picked up by the Cox Sports TV regional network ... Tickets for the game are available at www.Ticketmaster.com ... LSU next plays in Baton Rouge on Wednesday against North Texas in a 7 p.m. game televised by CST ... Tickets for that game are available at LSUtix.net.

SCORING BREAKDOWN					
CLASS	PTS	PCT.			
Freshmen	295	46.1			
Sophomores	145	22.7			
Juniors	199	31.1			
SCORING	PTS	PCT.			
Starters	453	70.9			
Bench	186	29.1			
POINTS IN PAINT	PTS	APG			
LSU	218	24.2			
Opponents	188	20.9			
POINTS OFF TO	PTS	APG			
LSU	141	15.7			
Opponents	137	15.3			
SECOND CHANCE POINTS	PTS	APG			
LSU	109	12.1			
Opponents	86	9.5			
BENCH SCORING	PTS	APG			
LSU	186	20.6			
Opponents	185	20.5			
FT% LAST 5 MINUTES	PCT				
LSU	44-64	68.8			
Opponents	49-71	69.0			
FG% LAST 5 MINUTES	PCT				
LSU	26-61	42.6			
Opponents	32-65	49.2			
3FG% LAST 5 MINUTES	PCT				
LSU	5-25	20.0			
Opp.	9-22	40.9			
W-L RECORDS OF STARTING LINEUPS (G, G, F, F, F or G,G,G,F,F)					
1-1 -- Bass, Turner, Dotson, White, Warren					
5-2 -- Stringer, Turner, Dotson, White, Warren					
LEADING SCORERS -- Stringer 7, Turner 2, Derenbecker 1, White 1					
LEADING REBOUNDERS -- Green 3, Warren 2, White 1, Ludwig 1, Turner 2					
LEADING ASSISTS -- Stringer 4, Bass 3, Dotson 3, Ludwig 2, Turner 2					
TOTAL DUNKS -- White 5, Courtney 1, Dotson 3, Bass 1, Warren 2, Turner 2, Green 2					
DOUBLE FIGURE SCORING GAMES -- Stringer 8, Turner 6, White 3, Dotson 3, Warren 2, Derenebecker 1,					
DOUBLE DOUBLE -- Warren 2					
PLAYERS SCORING IN DOUBLE FIGURES BY GAME					
0	1	2	3	4	5 or more
	1	3	3	1	1



# Garrett Green

Forward \* 6-11 \* 230 \* Junior \* 2L \* Woodland Hills, Calif. (Taft HS)

# 3

### Top Performances

**Points**  
 Season: 9, vs. C. Carolina, 12/13/10  
 Career: 9, vs. C. Carolina, 12/13/10

**Rebounds**  
 Season: 9, vs. Centenary, 11/24/10  
 Career: 9, vs. Centenary, 11/24/10

**Field Goals Made**  
 Season: 4, three times  
 Career: 4, three times

**3 PT FG Made**  
 Season  
 Career: 1, three times

**Free Throws Made**  
 Season: 2, vs. Houston, 11/30/10  
 Career: 2, vs. Houston, 11/30/10

**Assists**  
 Season: 1, vs. Nicholls, 11/16/10  
 Career: 3, at Florida, 1/16/10

**Blocks**  
 Season: 2, vs. C. Carolina, 12/13/10  
 Career: 2, three times

**Steals**  
 Season: 3, vs. Centenary, 11/24/10  
 Career: 3, twice

**Minutes Played**  
 Season: 20, vs. C. Carolina, 12/13/10  
 Career: 30, at Vanderbilt, 2/13/10

### Top Career Scoring Games

1. 9 -- vs. Coastal Carolina, 12/13/10
2. 8 -- vs. Centenary, 11/24/10
2. 8 -- vs. Memphis, 11/21/10
4. 7 -- vs. McNeese, 1/4/10
5. 6 -- vs. Arkansas, 2/24/10
5. 6 -- at Vanderbilt, 2/13/10
5. 6 -- vs. Oregon State, 12/21/07
8. 5 -- vs. Northwestern State, 12/12/09
9. 4 -- eight times

### 2008 SEC Freshman Academic Honor Roll

#### Junior Season (2010-11)

Had a career high of eight against Memphis (11/21) ... Equaled career high in points and set career high in rebounds against Centenary (11/24) ... Career high of nine points on 4-of-6 shooting and two blocks against Coastal Carolina (12/13)

#### Green's Game-by-Game Statistics

2010-11 OPPONENT	MIN	FG	3FG	FT	REB	PF/D	A	TO	BLK	STL	PTS
Northwestern State	11	1-1	0-0	0-0	6	2-0	0	1	0	0	2
Nicholls	5	0-1	0-0	0-2	4	1-0	1	0	0	0	0
Tennessee-Martin	5	1-2	0-0	1-2	3	1-0	0	1	0	1	3
Memphis (Tupelo)	13	4-7	0-0	0-1	4	5-1	0	0	1	1	8
Centenary	16	4-9	0-1	0-2	9	1-0	0	0	0	3	8
at South Alabama	11	0-3	0-0	0-0	5	3-0	0	3	0	1	0
Houston	14	1-6	0-1	2-4	5	2-0	0	2	0	1	4
Central Michigan	6	1-1	0-0	0-0	3	0-0	0	0	0	0	2
Coastal Carolina	20	4-6	0-0	1-3	4	1-0	0	0	2	0	9
McNeese State											
Wichita St. (Sport)											
North Texas											
Southern											
at Rice											
at Virginia											
at Auburn											
Arkansas											
at Kentucky											
Ole Miss											
at Tennessee											
at Alabama											
South Carolina											
Mississippi State											
at Ole Miss											
at Arkansas											
Alabama											
Florida											
at Miss. State											
Vanderbilt											
at Georgia											
Auburn											
SEC Tournament											

#### Garrett Green's Career Stats

YEAR	GP-GS	MIN/AVG	FG-FGA	PCT.	3FG-FGA	PCT.	FT-FTA	PCT.	REB.-AVG	PF-FO	AST	TO	BLK	STL	PTS-AVG.
07-08	25-1	241-9.6	20-47	.426	2-5	.400	3-7	.429	40-1.6	41-1	3	11	5	1	45-1.6
08-09	Redshirt														
09-10	30-11	320-10.7	27-80	.338	1-4	.250	8-27	.296	74-2.5	51-1	9	30	10	12	63-2.1
10-11	9-0	101-11.2	16-36	.444	0-2	.000	4-14	.286	43-4.8	16-1	1	7	3	7	36-4.0
<b>Totals</b>	<b>64-12</b>	<b>662-10.3</b>	<b>63-163</b>	<b>.387</b>	<b>3-11</b>	<b>.273</b>	<b>15-48</b>	<b>.313</b>	<b>157-2.5</b>	<b>108-3</b>	<b>13</b>	<b>48</b>	<b>18</b>	<b>20</b>	<b>144-2.3</b>



# Chris Bass

Guard \* 6-1 \* 185 \* Junior \* 2L \*Baton Rouge, La. (Lee Academy Prep)

# 4

### Top Performances

**Points**  
 Season: 6, vs. Central Mich., 12/11/10  
 Career: 7, twice

**Rebounds**  
 Season: 5, vs. Centenary, 11/24/10  
 Career: 8, vs. Grambling, 12/13/08

**Field Goals Made**  
 Season: 2, three times  
 Career: 3, three times

**3 PT FG Made**  
 Season:  
 Career: 2, twice

**Free Throws Made**  
 Season: 2, twice  
 Career: 3, at Utah, 1/2/10

**Assists**  
 Season: 5, vs. UT-Martin, 11/18/10  
 Career: 6, four times

**Blocks**  
 Season:  
 Career: 2, vs. Utah, 1/2/10

**Steals**  
 Season: 5, vs. NW St., 11/12/10  
 Career: 5, vs. NW St., 11/12/10

**Minutes Played**  
 Season: 20, vs. Houston, 11/30/10  
 Career: 36, vs. N'western St., 12/12/09

- Top Career Scoring Games**
- 7 vs. Connecticut, 11/25/09
  - 7 vs. ULM, 11/13/09
  - 6 vs. C. Michigan, 12/11/10
  - 6 at Florida, 1/16/10
  - 6 vs. Southeastern, 12/14/09
  - 6 vs. Grambling
  - 5 vs. Kentucky, 2/6/10
  - 5 vs. Louisiana Lafayette, 12/1/09
  - 5 vs. Alabama, 2/8/09
  - 4 five times

### Junior Season (2010-11)

Career high in steals of 5 vs. NW State (11/12) in the opener ... Back on track with assists, getting 5 with no turnovers versus UTM (11/18) ... After starting first two games with 2 assists, 6 turnovers, had 14 assists, 3 turnovers last five games ... Bass hit two free throws in the waning seconds to ice the Central Michigan win (12/11) with a season high six points.

### Bass' Game-by-Game Statistics

#### 2010-11

OPPONENT	MIN	FG	3FG	FT	REB	PF/D	A	TO	BLK	STL	PTS
Northwestern State	18	1-1	0-0	2-4	2	2-0	2	5	0	5	4
Nicholls	10	0-0	0-0	0-2	2	0-0	0	1	0	0	0
Tennessee-Martin	16	2-3	0-0	0-0	3	3-0	5	0	0	0	4
Memphis (Tupelo)	17	0-1	0-0	0-0	2	0-0	4	1	1	0	0
Centenary	16	1-2	0-0	1-3	5	1-0	1	1	0	0	3
at South Alabama	12	0-0	0-0	1-4	2	2-0	0	0	0	0	1
Houston	20	1-1	0-0	0-0	1	1-0	4	1	0	0	2
Central Michigan	17	2-5	0-0	2-2	4	0-0	4	3	0	1	6
Coastal Carolina	14	2-2	0-0	0-0	0	2-0	1	1	0	0	4
McNeese State											
Wichita St. (Sport)											
North Texas											
Southern											
at Rice											
at Virginia											
at Auburn											
Arkansas											
at Kentucky											
Ole Miss											
at Tennessee											
at Alabama											
South Carolina											
Mississippi State											
at Ole Miss											
at Arkansas											
Alabama											
Florida											
at Miss. State											
Vanderbilt											
at Georgia											
Auburn											
SEC Tournament											

### Chris Bass' Career Stats

YEAR	GP-GS	MIN/AVG	FG-FGA	PCT.	3FG-FGA	PCT.	FT-FTA	PCT.	REB.-AVG	PF-FO	AST	TO	BLK	STL	PTS-AVG.
08-09	28-0	276/9.9	7-26	.269	4-14	.286	5-14	.357	31-1.1	21-0	43	14	1	5	23-0.8
09-10	31-19	744/24.0	28-84	.333	6-33	.182	8-19	.421	73-2.4	51-3	97	38	5	24	70-2.3
10-11	9-2	140-15.6	9-15	.600	0-0	.000	6-15	.400	21-2.3	11-0	21	13	1	6	24-2.7
<b>Totals</b>	<b>68-21</b>	<b>1160-17.1</b>	<b>44-125</b>	<b>.352</b>	<b>10-47</b>	<b>.213</b>	<b>19-48</b>	<b>.396</b>	<b>125-1.8</b>	<b>83-3</b>	<b>161</b>	<b>65</b>	<b>7</b>	<b>35</b>	<b>117-1.7</b>



# Malcolm White

Forward \* 6-9 \* 225 \* Junior \* Redshirt Transfer \* Baton Rouge, La. \* Ole Miss

# 5

### Top LSU Performances

<b>Points</b>	
Season:	14, vs. Centenary, 11/24/10
Career:	14, vs. Centenary, 11/24/10

<b>Rebounds</b>	
Season:	15, vs. UT-Martin, 11/18/10
Career:	15, vs. UT-Martin, 11/18/10

<b>Field Goals Made</b>	
Season:	6, vs. Centenary, 11/24/10
Career:	6, vs. Centenary, 11/24/10

<b>3 PT FG Made</b>	
Season:	
Career:	

<b>Free Throws Made</b>	
Season:	6, vs. NW St., 11/12/10
Career:	6, vs. NW St., 11/12/10

<b>Assists</b>	
Season:	2, vs. UT-Martin, 11/18/10
Career:	2, vs. UT-Martin, 11/18/10

<b>Blocks</b>	
Season:	3, twice
Career:	3, twice

<b>Steals</b>	
Season:	2, vs. C. Michigan, 12/11/10
Career:	2, vs. C. Michigan, 12/11/10

<b>Minutes Played</b>	
Season:	34, vs. NW St., 11/12/10
Career:	34, vs. NW St., 11/12/10

### Top LSU Career Scoring Games

- 14 vs. Centenary, 11/24/10
- 12 vs. C. Michigan, 12/11/10
- 12 vs. UT-Martin, 11/18/10
- 12 vs. NW State, 11/12/10
- 9 vs. Houston, 11/30/10
- 5 vs. Coastal Carolina, 12/13/10
- 5 vs. Memphis, 11/21/10
- 4 at South Alabama, 11/28/10
- 2 vs. Nicholls, 11/16/10

### Junior Season (2010-11)

In first game in over a year, scored 12 points in 34 minutes with three blocks against NW St. (11/12/10) ... Had his first college double-double against UTM (11/18) with 12 points, 15 rebounds (9 offensive) ... Made first six shots and had season best 14 against Centenary (11/24) ... Had his fourth double figure game against C. Michigan (12/11) with 12.

### White's Game-by-Game Statistics

2009-10	OPPONENT	MIN	FG	3FG	FT	REB	PF/D	A	TO	BLK	STL	PTS
	Northwestern State	34	3-8	0-0	6-11	4	4-0	0	4	3	0	12
	Nicholls	10	1-1	0-0	0-0	2	3-0	0	3	1	0	2
	Tennessee-Martin	31	5-13	0-0	2-4	15	2-0	2	3	3	0	12
	Memphis (Tupelo)	17	1-4	0-0	3-4	4	5-1	0	1	1	0	5
	Centenary	21	6-7	0-0	2-2	7	1-0	0	0	0	0	14
	at South Alabama	28	2-4	0-0	0-0	4	2-0	0	0	1	0	4
	Houston	23	4-7	0-0	1-2	2	4-0	0	0	0	1	9
	Central Michigan	30	5-11	0-0	2-4	4	2-0	0	0	2	2	12
	Coastal Carolina	19	2-3	0-0	1-4	3	4-0	0	1	0	0	5
	McNeese State											
	Wichita St. (Sport)											
	North Texas											
	Southern											
	at Rice											
	at Virginia											
	at Auburn											
	Arkansas											
	at Kentucky											
	Ole Miss											
	at Tennessee											
	at Alabama											
	South Carolina											
	Mississippi State											
	at Ole Miss											
	at Arkansas											
	Alabama											
	Florida											
	at Miss. State											
	Vanderbilt											
	at Georgia											
	Auburn											
	SEC Tournament											

### Malcolm White's Career Stats

YEAR	GP-GS	MIN/AVG	FG-FGA	PCT.	3FG-FGA	PCT.	FT-FTA	PCT.	REB.-AVG	PF-FO	AST	TO	BLK	STL	PTS-AVG.
10-11	9-9	213-23.7	29-58	.500	0-0	.000	17-37	.548	45-5.0	27-1	2	12	11	3	75-8.3
<b>Totals</b>	<b>9-9</b>	<b>213-23.7</b>	<b>29-58</b>	<b>.500</b>	<b>0-0</b>	<b>.000</b>	<b>17-37</b>	<b>.548</b>	<b>45-5.0</b>	<b>27-1</b>	<b>2</b>	<b>12</b>	<b>11</b>	<b>3</b>	<b>75-8.3</b>



# Andre Stringer

Guard \* 5-9 \* 170 \* Freshman \* HS \* Jackson, Miss. (Forest Park HS)

# 10

### Top Performances

Points	
Season:	21, twice
Career:	21, twice

Rebounds	
Season:	4, at S. Alabama, 11/28/10
Career:	4, at S. Alabama, 11/28/10

Field Goals Made	
Season:	7, at S. Alabama, 11/28/10
Career:	7, at S. Alabama, 11/28/10

3 PT FG Made	
Season:	4, four times
Career:	4, four times

Free Throws Made	
Season:	11, vs. Houston, 11/30/10
Career:	11, vs. Houston, 11/30/10

Assists	
Season:	5, twice
Career:	5, twice

Blocks	
Season:	1, at S. Alabama, 11/28/10
Career:	1, at S. Alabama, 11/28/10

Steals	
Season:	3, twice
Career:	3, twice

Minutes Played	
Season:	33, vs. C. Carolina, 12/13/10
Career:	33, vs. C. Carolina, 12/13/10

### Top Career Scoring Games

1.	21	at S. Alabama, 11/28/10
1.	21	vs. NW State, 11/12/10
3.	16	vs. Coastal Carolina, 12/13/10
3.	16	vs. Centenary, 11/24/10
5.	15	vs. UT-Martin, 11/18/10
6.	14	vs. Nicholls, 11/16/10
7.	13	vs. Houston, 11/30/10
7.	13	vs. Memphis, 11/21/10
9.	1	vs. C. Michigan, 12/11/10

### Freshman Season (2010-11)

Hit four treys in the season opener against NW State (11/12), with five assists in scoring 21 points ... Third straight double figure scoring game against UTM (11/18) with 15 points in his first career start ... Led team for fourth straight game in scoring with big second half against Memphis (11/21) ... 26 free throws made in first four games ... Team lead in scoring streak reaches five vs. Centenary (11/24) ... Streak reached six and he was MVP of Coors Classic in Mobile with another 21 point game that included four treys vs. South Alabama (11/28) ... Didn't lead team in scoring for first time this season vs. Houston (11/30), but did have his seventh straight double figure scoring game ... First game not in double figures against C. Michigan (12/11) ... Stringer had four treys for the fourth time against Coast Carolina (12/13)

### Stringer's Game-by-Game Statistics

2009-10	MIN	FG	3FG	FT	REB	PF/D	A	TO	BLK	STL	PTS
Northwestern State	25	5-10	4-9	7-10	3	4-0	5	6	0	0	21
Nicholls	31	4-13	3-8	3-3	2	0-0	3	0	0	0	14
Tennessee-Martin	32	3-12	1-7	8-9	2	2-0	1	2	0	3	15
Memphis (Tupelo)	31	2-6	1-3	8-11	2	3-0	2	3	0	1	13
Centenary	19	5-7	4-6	2-3	0	1-0	4	1	0	1	16
at South Alabama	30	7-13	4-6	3-4	4	1-0	3	2	1	2	21
Houston	24	1-6	0-4	11-12	3	3-0	3	4	0	3	13
Central Michigan	21	1-6	0-2	6-6	1	3-0	0	6	0	1	8
Coastal Carolina	33	6-15	4-8	0-0	2	3-0	5	2	0	2	16
McNeese State											
Wichita St. (S'port)											
North Texas											
Southern											
at Rice											
at Virginia											
at Auburn											
Arkansas											
at Kentucky											
Ole Miss											
at Tennessee											
at Alabama											
South Carolina											
Mississippi State											
at Ole Miss											
at Arkansas											
Alabama											
Florida											
at Miss. State											
Vanderbilt											
at Georgia											
Auburn											
SEC Tournament											

### Andre Stringer's Career Stats

YEAR	GP-GS	MIN/AVG	FG-FGA	PCT.	3FG-FGA	PCT.	FT-FTA	PCT.	REB.-AVG	PF-FO	AST	TO	BLK	STL	PTS-AVG.
10-11	9-7	246-27.3	34-88	.386	21-53	.396	48-58	.828	19-2.1	20-0	26	26	1	13	137-15.2
<b>Totals</b>	<b>9-7</b>	<b>246-27.3</b>	<b>34-88</b>	<b>.386</b>	<b>21-53</b>	<b>.396</b>	<b>48-58</b>	<b>.828</b>	<b>19-2.1</b>	<b>20-0</b>	<b>26</b>	<b>26</b>	<b>1</b>	<b>13</b>	<b>137-15.2</b>



# Eddie Ludwig

Forward \* 6-9 \* 215 \* Sophomore \* 1L \* Metairie, La. (Metairie Park Country Day)

# 13

### Top Performances

**Points**

Season:	8, vs. Memphis, 11/21/10
Career:	9, twice

**Rebounds**

Season:	8, vs. Memphis, 11/21/10
Career:	8, vs. Memphis, 11/21/10

**Field Goals Made**

Season:	3, vs. Memphis, 11/21/10
Career:	3, three times

**3 PT FG Made**

Season:	
Career:	

**Free Throws Made**

Season:	5, vs. UT-Martin, 11/18/10
Career:	5, twice

**Assists**

Season:	4, twice
Career:	5, at Arkansas, 2/10/10

**Blocks**

Season:	
Career:	1, three times

**Steals**

Season:	3, vs. NW St., 11/12/10
Career:	4, vs. Georgia, 3/6/10

**Minutes Played**

Season:	32, vs. Memphis, 11/21/10
Career:	32, vs. Memphis, 11/21/10

### Top Career Scoring Games

- 9 at Ole Miss, 3/4/10
- 9 vs. Rice, 12/19/08
- 8 vs. Memphis, 11/21/10
- 8 vs. Tennessee (SECT), 3/11/10
- 6 vs. Centenary, 11/24/10
- 6 vs. Connecticut, 11/25/09
- 5 vs. Houston, 11/30/10
- 5 vs. UT-Martin, 11/18/10
- 5 vs. Northwestern State, 12/12/09
- 4 five times

### Sophomore Season (2010-11)

His best game of the year, one point off his career high with 32 minutes with eight points against Memphis (11/21) ... Also had career high eight rebounds and career minutes played (32).

### Ludwig's Game-by-Game Statistics

2010-11 OPPONENT	MIN	FG	3FG	FT	REB	PF/D	A	TO	BLK	STL	PTS
Northwestern State	18	0-0	0-0	4-4	3	5-1	0	2	0	3	4
Nicholls	22	1-2	0-0	2-2	2	3-0	0	2	0	0	4
Tennessee-Martin	12	0-0	0-0	5-6	1	2-0	0	0	0	0	5
Memphis (Tupelo)	32	3-7	0-2	2-2	8	3-0	1	2	0	1	8
Centenary	24	2-5	0-0	2-3	5	2-0	4	1	0	1	6
at South Alabama	21	0-0	0-0	4-4	4	1-0	4	4	0	0	4
Houston	10	2-2	0-0	1-1	3	0-0	0	0	0	2	5
Central Michigan	8	1-3	0-0	1-2	2	2-0	0	1	0	0	3
Coastal Carolina	11	0-0	0-0	0-0	1	0-0	0	0	0	1	0
McNeese State											
Wichita St. (S'port)											
North Texas											
Southern											
at Rice											
at Virginia											
at Auburn											
Arkansas											
at Kentucky											
Ole Miss											
at Tennessee											
at Alabama											
South Carolina											
Mississippi State											
at Ole Miss											
at Arkansas											
Alabama											
Florida											
at Miss. State											
Vanderbilt											
at Georgia											
Auburn											
SEC Tournament											

### Eddie Ludwig's Career Stats

YEAR	GP-GS	MIN/AVG	FG-FGA	PCT.	3FG-FGA	PCT.	FT-FTA	PCT.	REB-AVG	PF-FD	AST	TO	BLK	STL	PTS-AVG.
09-10	30-1	383/12.8	22-64	.344	0-8	.000	26-30	.867	74-2.5	47-0	19	19	3	14	70-2.3
10-11	9-0	158-17.6	9-19	.474	0-2	.000	21-24	.875	29-3.2	18-1	9	12	0	8	39-4.3
<b>Totals</b>	<b>39-1</b>	<b>541-13.9</b>	<b>31-83</b>	<b>.373</b>	<b>0-10</b>	<b>.000</b>	<b>47-54</b>	<b>.870</b>	<b>103-2.6</b>	<b>65-1</b>	<b>28</b>	<b>31</b>	<b>3</b>	<b>22</b>	<b>109-2.8</b>



# Jalen Courtney

Forward \* 6-8 \* 210 \* Freshman \* HS \* Jackson, Miss. (Provine HS)

# 14

### Top Performances

**Points**  
 Season: 2, three times  
 Career: 2, three times

**Rebounds**  
 Season: 3, vs. Centenary, 11/24/10  
 Career: 3, vs. Centenary, 11/24/10

**Field Goals Made**  
 Season: 1, twice  
 Career: 1, twice

**3 PT FG Made**  
 Season:  
 Career:

**Free Throws Made**  
 Season: 2, vs. Centenary, 11/24/10  
 Career: 2, vs. Centenary, 11/24/10

**Assists**  
 Season:  
 Career:

**Blocks**  
 Season:  
 Career:

**Steals**  
 Season:  
 Career:

**Minutes Played**  
 Season: 12, vs. Centenary, 11/24/10  
 Career: 12, vs. Centenary, 11/24/10

**Top Career Scoring Games**  
 1. 2 vs. NW State, 11/12/10  
 1. 2 vs. Centenary, 11/24/10  
 1. 2 vs. Memphis, 11/21/10  
 4. 1 vs. UT-Martin, 11/18/10

### Freshman Season (2010-11)

#### Courtney's Game-by-Game Statistics

2010-11	OPONENT	MIN	FG	3FG	FT	REB	PF/D	A	TO	BLK	STL	PTS
Northwestern State	3	1-1	0-0	0-0	0	0-0	0	0	0	0	0	2
Nicholls	DNP											
Tennessee-Martin	4	0-1	0-0	1-2	1	1-0	0	0	0	0	0	1
Memphis (Tupelo)	5	1-1	0-0	0-0	0	1-0	0	0	0	0	0	2
Centenary	12	0-1	0-1	2-2	3	1-0	0	0	0	0	0	2
at South Alabama	1	0-0	0-0	0-0	0	0-0	0	0	0	0	0	0
Houston	DNP											
Central Michigan	DNP											
Coastal Carolina	1	0-0	0-0	0-0	0	0-0	0	0	0	0	0	0
McNeese State												
Wichita St. (Sport)												
North Texas												
Southern												
at Rice												
at Virginia												
at Auburn												
Arkansas												
at Kentucky												
Ole Miss												
at Tennessee												
at Alabama												
South Carolina												
Mississippi State												
at Ole Miss												
at Arkansas												
Alabama												
Florida												
at Miss. State												
Vanderbilt												
at Georgia												
Auburn												
SEC Tournament												

### Jalen Courtney's Career Stats

YEAR	GP-GS	MIN/AVG	FG-FGA	PCT.	3FG-FGA	PCT.	FT-FTA	PCT.	REB.-AVG	PF-FD	AST	TO	BLK	STL	PTS-AVG.
10-11	6-0	26-4.3	2-4	.500	0-1	.000	3-4	.750	4-0.7	3-0	0	0	0	0	7-1.2
<b>Totals</b>	<b>6-0</b>	<b>26-4.3</b>	<b>2-4</b>	<b>.500</b>	<b>0-1</b>	<b>.000</b>	<b>3-4</b>	<b>.750</b>	<b>4-0.7</b>	<b>3-0</b>	<b>0</b>	<b>0</b>	<b>0</b>	<b>0</b>	<b>7-1.2</b>



# Dennis Harris

Forward • 6-11 \* 190 \* Sophomore \* 1L \* Jonesboro, Ga. (Mundy's Mills HS)

# 15

### Top Performances

#### Points

Season: 2, vs. C. Michigan, 12/11/10  
 Career: 12, vs. Alabama, 1/19/10

#### Rebounds

Season: 3, vs. C. Carolina, 12/13/10  
 Career: 8, twice

#### Field Goals Made

Season: 1, vs. C. Michigan, 12/11/10  
 Career: 5, three times

#### 3 PT FG Made

Season:  
 Career: 2, vs. Miss. State, 2/20/10

#### Free Throws Made

Season:  
 Career: 3, vs. ULM, 11/13/09

#### Assists

Season:  
 Career: 4, vs. Western Ky, 11/17/09

#### Blocks

Season: 1, twice  
 Career: 2, twice

#### Steals

Season: 2, vs. C. Michigan, 12/11/10  
 Career: 2, twice

#### Minutes Played

Season: 15, vs. C. Carolina, 12/13/10  
 Career: 29, vs. Western Ky., 11/17/09

### Top Career Scoring Games

1. 12 vs. Alabama, 1/9/10
2. 10 at Auburn, 2/27/10
2. 10 vs. Mississippi State, 2/20/10
2. 10 at Vanderbilt, 2/13/10
2. 10 vs. Indiana State, 11/16/09
6. 9 vs. Western Kentucky, 11/17/09
6. 9 vs. ULM, 11/13/09
8. 8 at Alabama, 1/27/10
9. 7 vs. McNeese, 1/4/10
10. 6 three times

### Sophomore Season (2010-11)

Missed start of season with left ankle sprain (NW St., 11/12) ... Finally made his 2010-11 season debut against Central Michigan (12/11)

### Harris' Game-by-Game Statistics

#### 2010-11

OPPONENT	MIN	FG	3FG	FT	REB	PF/D	A	TO	BLK	STL	PTS
Northwestern State	DNP -- injury										
Nicholls	DNP -- injury										
Tennessee-Martin	DNP -- injury										
Memphis (Tupelo)	DNP -- injury										
Centenary	DNP -- injury										
at South Alabama	DNP -- injury										
Houston	DNP -- injury										
Central Michigan	6	1-1	0-0	0-0	0	0-0	0	1	1	2	2
Coastal Carolina	15	0-2	0-0	0-0	3	2-0	0	1	1	0	0
McNeese State											
Wichita St. (Sport)											
North Texas											
Southern											
at Rice											
at Virginia											
at Auburn											
Arkansas											
at Kentucky											
Ole Miss											
at Tennessee											
at Alabama											
South Carolina											
Mississippi State											
at Ole Miss											
at Arkansas											
Alabama											
Florida											
at Miss. State											
Vanderbilt											
at Georgia											
Auburn											
SEC Tournament											

### Dennis Harris' Career Stats

YEAR	GP-GS	MIN/AVG	FG-FGA	PCT.	3FG-FGA	PCT.	FT-FTA	PCT.	REB.-AVG	PF-FD	AST	TO	BLK	STL	PTS-AVG.
09-10	29-9	415/14.3	56-111	.505	5-16	.313	17-32	.531	91-3.1	64-1	14	19	14	8	134-4.6
10-11	2-0	21-10.5	1-3	.333	0-0	.000	0-0	.000	3-1.5	2-0	0	2	2	2	2-1.0
<b>Totals</b>	<b>31-9</b>	<b>436-14.1</b>	<b>57-114</b>	<b>.500</b>	<b>5-16</b>	<b>.313</b>	<b>17-32</b>	<b>.531</b>	<b>94-3.0</b>	<b>66-1</b>	<b>14</b>	<b>21</b>	<b>16</b>	<b>10</b>	<b>136-4.4</b>





# Matt Derenbecker

Forward \* 6-7 \* 185 \* Freshman \* HS \* Metairie, La. (Metairie Park Country Day)

# 21

### Top Performances

#### Points

Season:	14, vs. Nicholls, 11/16/10
Career:	14, vs. Nicholls, 11/16/10

#### Rebounds

Season:	6, vs. Nicholls, 11/16/10
Career:	6, vs. Nicholls, 11/16/10

#### Field Goals Made

Season:	5, vs. Nicholls, 11/16/10
Career:	5, vs. Nicholls, 11/16/10

#### 3 PT FG Made

Season:	3, vs. Nicholls, 11/16/10
Career:	3, vs. Nicholls, 11/16/10

#### Free Throws Made

Season:	1, twice
Career:	1, twice

#### Assists

Season:	3, at C. Carolina, 12/13/10
Career:	3, at C. Carolina, 12/13/10

#### Blocks

Season:	1, vs. Centenary, 11/24/10
Career:	1, vs. Centenary, 11/24/10

#### Steals

Season:	1, at S. Alabama, 11/28/10
Career:	1, at S. Alabama, 11/28/10

#### Minutes Played

Season:	25, vs. Nicholls, 11/16/10
Career:	25, vs. Nicholls, 11/16/10

### Top Career Scoring Games

1.	14	vs. Nicholls, 11/16/10
2.	9	at S. Alabama, 11/28/10
3.	6	vs. Centenary, 11/24/10
4.	5	vs. Houston, 11/30/10
5.	3	vs. Coastal Carolina, 12/13/10
4.	2	vs. UT-Martin, 11/18/10

### Freshman Season (2010-11)

Posted his first LSU points in Nicholls game (11/16) ... Hit all three field goal attempts, including two treys in nine-point effort at South Alabama (11/28).

### Derenbecker's Game-by-Game Statistics

#### 2009-10

OPPONENT	MIN	FG	3FG	FT	REB	PF/D	A	TO	BLK	STL	PTS
Northwestern State	6	0-0	0-0	0-0	0	2-0	0	2	0	0	0
Nicholls	28	5-10	3-7	1-1	6	3-0	0	2	0	0	14
Tennessee-Martin	19	1-3	0-2	0-0	2	1-0	0	1	0	0	2
Memphis (Tupelo)	8	0-3	0-3	0-0	1	1-0	1	0	0	0	0
Centenary	22	3-8	0-4	0-0	0	1-0	1	1	1	0	6
at South Alabama	15	3-3	2-2	1-2	4	2-0	2	0	0	1	9
Houston	11	2-4	1-2	0-0	0	0-0	0	1	0	0	5
Central Michigan	7	0-0	0-0	0-0	0	2-0	1	1	0	0	0
Coastal Carolina	18	1-6	1-2	0-0	1	2-0	3	0	0	0	3
McNeese State											
Wichita St. (Sport)											
North Texas											
Southern											
at Rice											
at Virginia											
at Auburn											
Arkansas											
at Kentucky											
Ole Miss											
at Tennessee											
at Alabama											
South Carolina											
Mississippi State											
at Ole Miss											
at Arkansas											
Alabama											
Florida											
at Miss. State											
Vanderbilt											
at Georgia											
Auburn											
SEC Tournament											

### Matt Derenbecker's Career Stats

YEAR	GP-GS	MIN/AVG	FG-FGA	PCT.	3FG-FGA	PCT.	FT-FTA	PCT.	REB.-AVG	PF-FO	AST	TO	BLK	STL	PTS-AVG.
10-11	9-0	134-14.9	15-37	.405	7-22	.318	2-3	.667	14-1.6	14-0	8	8	1	1	39-4.3
<b>Totals</b>	<b>9-0</b>	<b>134-14.9</b>	<b>15-37</b>	<b>.405</b>	<b>7-22</b>	<b>.318</b>	<b>2-3</b>	<b>.667</b>	<b>14-1.6</b>	<b>14-0</b>	<b>8</b>	<b>8</b>	<b>1</b>	<b>1</b>	<b>39-4.3</b>



# Ralston Turner

Guard \* 6-6 \* 193 \* Freshman \* HS \* Muscle Shoals, Ala. (Muscle Shoals HS)

# 22

### Top Performances

#### Points

Season:	21, vs. NW St., 11/12/10
Career:	21, vs. NW St., 11/12/10

#### Rebounds

Season:	7, vs. C. Michigan, 12/11/10
Career:	7, vs. C. Michigan, 12/11/10

#### Field Goals Made

Season:	6, twice
Career:	6, twice

#### 3 PT FG Made

Season:	3, three times
Career:	3, three times

#### Free Throws Made

Season:	6, vs. NW St., 11/12/10
Career:	6, vs. NW St., 11/12/10

#### Assists

Season:	5, vs. Houston, 11/30/10
Career:	5, vs. Houston, 11/30/10

#### Blocks

Season:	1, vs. Memphis, 11/21/10
Career:	1, vs. Memphis, 11/21/10

#### Steals

Season:	2, vs. NW St., 11/12/10
Career:	2, vs. NW St., 11/12/10

#### Minutes Played

Season:	38, twice
Career:	38, twice

### Top Career Scoring Games

1.	21	vs. Northwestern State., 11/12/10
2.	17	at S. Alabama, 11/28/10
3.	15	vs. Coastal Carolina, 12/13/10
3.	15	vs. Houston, 11/30/10
5.	11	vs. Memphis, 11/21/10
6.	10	vs. UT-Martin, 11/18/10
7.	9	vs. C. Michigan, 12/11/10
8.	8	vs. Centenary, 11/24/10
9.	6	vs. Nicholls, 11/16/10

### Freshman Season (2010-11)

Started the opening college game of his career and in 38 minutes scored 21 points, hitting 6-of-12 field goals with three treys against NW State (11/12) ... Third double figure game against Memphis (11/21).

### Turner's Game-by-Game Statistics

#### 2010-11

OPPONENT	MIN	FG	3FG	FT	REB	PF/D	A	TO	BLK	STL	PTS
Northwestern State	38	6-12	3-6	6-9	5	2-0	2	2	0	2	21
Nicholls	30	1-6	0-2	4-4	2	2-0	2	1	0	0	6
Tennessee-Martin	27	4-10	2-5	0-0	1	0-0	0	3	0	1	10
Memphis (Tupelo)	26	3-10	2-5	3-4	2	2-0	1	2	1	0	11
Centenary	21	3-6	2-5	0-0	3	1-0	1	2	0	0	8
at South Alabama	22	5-7	2-4	5-8	1	5-1	0	1	0	1	17
Houston	34	6-10	2-5	1-2	3	0-0	5	6	0	0	15
Central Michigan	38	3-4	3-4	0-2	7	3-0	4	1	0	1	9
Coastal Carolina	35	5-16	1-9	4-4	6	4-0	1	3	0	1	15
McNeese State											
Wichita St. (Sport)											
North Texas											
Southern											
at Rice											
at Virginia											
at Auburn											
Arkansas											
at Kentucky											
Ole Miss											
at Tennessee											
at Alabama											
South Carolina											
Mississippi State											
at Ole Miss											
at Arkansas											
Alabama											
Florida											
at Miss. State											
Vanderbilt											
at Georgia											
Auburn											
SEC Tournament											

### Ralston Turner's Career Stats

YEAR	GP-GS	MIN/AVG	FG-FGA	PCT.	3FG-FGA	PCT.	FT-FTA	PCT.	REB.-AVG	PF-FD	AST	TO	BLK	STL	PTS-AVG.
10-11	9-9	271/30.1	36-81	.444	17-45	.378	23-33	.697	30-3.3	19-1	16	21	1	6	112-12.4
<b>Totals</b>	<b>9-9</b>	<b>271/30.1</b>	<b>36-81</b>	<b>.444</b>	<b>17-45</b>	<b>.378</b>	<b>23-33</b>	<b>.697</b>	<b>30-3.3</b>	<b>19-1</b>	<b>16</b>	<b>21</b>	<b>1</b>	<b>6</b>	<b>112-12.4</b>



# Storm Warren

Forward \* 6-7 \* 230 \* Junior \* 2L \* Monroe, La. (Richwood HS)

# 24

### Top Performances

#### Points

Season: 12, twice  
 Career: 21, twice

#### Rebounds

Season: 14, vs. Nicholls, 11/16/10  
 Career: 16, twice

#### Field Goals Made

Season: 6, twice  
 Career: 9, twice

#### 3 PT FG Made

Season:  
 Career:

#### Free Throws Made

Season: 2, vs. Nicholls, 11/16/10  
 Career: 9, twice

#### Assists

Season: 2, vs. NW St., 11/12/10  
 Career: 4, vs. ULM, 11/13/09

#### Blocks

Season: 4, vs. Houston, 11/30/10  
 Career: 4, three times

#### Steals

Season: 3, twice  
 Career: 3, four times

#### Minutes Played

Season: 36, vs. Nicholls, 11/16/10  
 Career: 39, vs. UL-Lafayette, 12/1/09

### Top Career Scoring Games

1. 21 at Utah, 1/2/10
1. 21 vs. Northwestern State, 12/12/09
3. 20 vs. Western Kentucky, 11/17/09
4. 19 at South Carolina, 1/13/10
5. 18 vs. Tennessee (SECT), 3/11/10
5. 18 vs. UL-Lafayette, 12/1/09
7. 17 vs. Auburn, 1/20/10
8. 15 vs. UConn, 11/25/09
8. 15 vs. ULM, 11/13/09
10. 14 four times

### Junior Season (2010-11)

Started his 32nd consecutive game in the season opener against NW St. (11/12) .... 10th career double double against UT-Martin (11/18) and second consecutive game in double figure rebounds

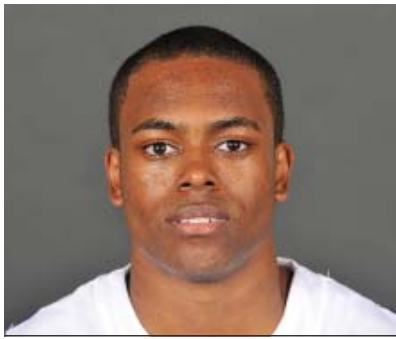
### Warren's Game-by-Game Statistics

#### 2010-11

OPPONENT	MIN	FG	3FG	FT	REB	PF/D	A	TO	BLK	STL	PTS
Northwestern State	17	2-2	0-0	0-0	4	4-0	2	2	0	1	4
Nicholls	36	3-7	0-0	2-3	14	2-0	1	2	1	3	8
Tennessee-Martin	27	6-9	0-0	0-0	11	3-0	0	2	2	2	12
Memphis (Tupelo)	14	1-6	0-0	0-0	3	5-1	0	0	0	2	2
Centenary	16	0-6	0-0	1-2	6	1-0	1	1	3	2	1
at South Alabama	17	3-7	0-0	3-4	3	3-0	0	0	1	0	9
Houston	33	6-10	0-0	0-0	11	3-0	0	2	4	3	12
Central Michigan	29	4-7	0-0	0-0	4	2-0	0	1	1	0	8
Coastal Carolina	22	4-6	0-0	0-0	5	3-0	0	3	0	1	8
McNeese State											
Wichita St. (Sport)											
North Texas											
Southern											
at Rice											
at Virginia											
at Auburn											
Arkansas											
at Kentucky											
Ole Miss											
at Tennessee											
at Alabama											
South Carolina											
Mississippi State											
at Ole Miss											
at Arkansas											
Alabama											
Florida											
at Miss. State											
Vanderbilt											
at Georgia											
Auburn											
SEC Tournament											

### Storm Warren's Career Stats

YEAR	GP-GS	MIN/AVG	FG-FGA	PCT.	3FG-FGA	PCT.	FT-FTA	PCT.	REB.-AVG	PF-FD	AST	TO	BLK	STL	PTS-AVG.
08-09	30-0	224-7.5	21-49	.429	0-0	.000	19-39	.487	53-1.8	32-1	6	9	15	12	61-2.0
09-10	31-31	827-26.7	141-263	.536	0-0	.000	84-123	.683	223-7.2	104-5	13	46	44	33	366-11.8
10-11	9-9	211-23.4	29-60	.483	0-0	.000	6-9	.667	61-6.8	26-1	4	13	12	14	64-7.1
<b>Totals</b>	<b>70-40</b>	<b>1262-18.0</b>	<b>191-372</b>	<b>.513</b>	<b>0-0</b>	<b>.000</b>	<b>109-171</b>	<b>.637</b>	<b>337-4.8</b>	<b>162-7</b>	<b>23</b>	<b>68</b>	<b>71</b>	<b>59</b>	<b>491-7.0</b>



# Daron Populist

Guard \* 5-10 \* 170 \* Sophomore \* 1L \* Slidell, La. (Salmen HS)

# 25

### Top Performances

#### Points

Season: 6, vs. Centenary, 11/24/10  
 Career: 8, vs. Arkansas, 2/24/10

#### Rebounds

Season: 2, twice  
 Career: 2, four times

#### Field Goals Made

Season: 2, vs. Centenary, 11/24/10  
 Career: 2, twice

#### 3 PT FG Made

Season: 2, vs. Centenary, 11/24/10  
 Career: 2, twice

#### Free Throws Made

Season  
 Career: 2, vs. Arkansas, 2/24/10

#### Assists

Season: 2, vs. NW St., 11/12/10  
 Career: 2, three times

#### Blocks

Season:  
 Career:

#### Steals

Season:  
 Career: 1, vs. Georgia, 3/6/10

#### Minutes Played

Season: 13, vs. Centenary, 11/24/10  
 Career: 23, twice

### Top Career Scoring Games

1. 8 vs. Arkansas, 2/24/10
2. 6 vs. Centenary, 11/24/10
3. 4 at Mississippi State, 1/30/10
4. 3 vs. Georgia, 3/6/10
4. 3 vs. Tennessee, 2/4/10
6. 2 vs. UT-Martin, 11/18/10
6. 2 at Arkansas, 2/10/10

### Sophomore Season (2010-11)

Played 13 minutes versus Centenary (11/24), scoring six points, hitting two treys

### Populist's Game-by-Game Statistics

#### 2009-10

OPPONENT	MIN	FG	3FG	FT	REB	PF/D	A	TO	BLK	STL	PTS
Northwestern State	3	0-0	0-0	0-0	0	1-0	2	0	0	0	0
Nicholls	7	0-1	0-0	0-0	0	4-0	0	3	0	0	0
Tennessee-Martin	8	1-1	0-0	0-0	2	2-0	1	0	0	0	2
Memphis (Tupelo)	DNP										
Centenary	13	2-5	2-4	0-0	2	1-0	1	0	0	0	6
at South Alabama	4	0-1	0-0	0-0	1	0-0	1	0	0	0	0
Houston	DNP										
Central Michigan	4	0-0	0-0	0-0	0	0-0	1	0	0	0	0
Coastal Carolina	DNP										
McNeese State											
Wichita St. (S'port)											
North Texas											
Southern											
at Rice											
at Virginia											
at Auburn											
Arkansas											
at Kentucky											
Ole Miss											
at Tennessee											
at Alabama											
South Carolina											
Mississippi State											
at Ole Miss											
at Arkansas											
Alabama											
Florida											
at Miss. State											
Vanderbilt											
at Georgia											
Auburn											
SEC Tournament											

### Daron Populist's Career Stats

YEAR	GP-GS	MIN/AVG	FG-FGA	PCT.	3FG-FGA	PCT.	FT-FTA	PCT.	REB.-AVG	PF-FO	AST	TO	BLK	STL	PTS-AVG.
09-10	16-0	156-9.8	6-21	.286	5-16	.313	3-4	.750	8-0.5	7-0	9	9	0	1	20-1.3
10-11	6-0	39-6.5	3-8	.375	2-4	.500	0-0	.000	5-0.8	8-0	6	3	0	0	8-1.3
<b>Totals</b>	<b>22-0</b>	<b>195-8.9</b>	<b>9-29</b>	<b>.310</b>	<b>7-20</b>	<b>.350</b>	<b>3-4</b>	<b>.750</b>	<b>13-0.6</b>	<b>15-0</b>	<b>15</b>	<b>12</b>	<b>0</b>	<b>1</b>	<b>28-1.3</b>



# Aaron Dotson

Guard \* 6-4 \* 205 \* Sophomore \* 1 L \* Seattle, Wash. (Rainier Beach HS)

# 45

## Top Performances

### Points

Season: 17, vs. NW St., 11/12/10  
 Career: 17, vs. NW St., 11/12/10

### Rebounds

Season: 6, vs. UT-Martin, 11/21/10  
 Career: 6, vs. UT-Martin, 11/21/10

### Field Goals Made

Season: 5, twice  
 Career: 5, twice

### 3 PT FG Made

Season: 4, at S. Alabama, 11/28/10  
 Career: 4, at S. Alabama, 11/28/10

### Free Throws Made

Season: 7, vs. NW St., 11/12/10  
 Career: 7, vs. NW St., 11/12/10

### Assists

Season: 4, three times  
 Career: 5, vs. McNeese, 1/4/10

### Blocks

Season: 2, vs. Nicholls, 11/16/10  
 Career: 2, tjree to,es

### Steals

Season: 2, vs. Memphis, 11/21/10  
 Career: 2, vs. Memphis, 11/21/10

### Minutes Played

Season: 39, at S. Alabama, 11/28/10  
 Career: 39, at S. Alabama, 11/28/10

## Top Career Scoring Games

1. 17 vs. Northwestern State, 11/12/10
2. 15 at S. Alabama, 11/28/10
3. 13 vs. UT-Martin, 11/18/10
4. 12 vs. Memphis, 11/21/10
5. 11 vs. Washington State, 12/22/09
6. 10 vs. McNeese, 1/4/10
6. 10 vs. Rice, 12/19/09
8. 9 vs. Coastal Carolina, 12/13/10
8. 9 vs. C. Michigan, 12/11/10
9. 8 twice

## Sophomore Season (2010-11)

Had a career high of 17 points in the season opener against NW St. (11/12) .. Hit two treys for second straight game against Centenary (11/24), 4-of-last-5 from arc ... In six games has made more threes (8) than last year (7) ... Made four at South Alabama (11/28)

## Dotson's Game-by-Game Statistics

### 2010-11

OPPONENT	MIN	FG	3FG	FT	REB	PF/D	A	TO	BLK	STL	PTS
Northwestern State	27	5-5	0-0	7-8	3	4-0	0	1	1	2	17
Nicholls	21	1-2	0-0	2-2	2	3-0	0	2	0	0	5
Tennessee-Martin	19	4-8	0-1	5-6	6	3-0	2	3	0	0	13
Memphis (Tupelo)	37	3-7	2-2	4-7	4	2-0	4	4	0	2	12
Centenary	20	3-5	2-3	0-0	1	1-0	4	1	0	0	8
at South Alabama	39	5-9	4-5	1-2	3	5-1	4	1	0	0	15
Houston	31	3-6	2-2	0-0	3	3-0	2	0	1	0	8
Central Michigan	34	2-4	0-1	5-6	0	3-0	2	2	0	1	9
Coastal Carolina	37	2-8	1-3	4-6	5	2-0	3	5	1	0	9
McNeese State											
Wichita St. (S'port)											
North Texas											
Southern											
at Rice											
at Virginia											
at Auburn											
Arkansas											
at Kentucky											
Ole Miss											
at Tennessee											
at Alabama											
South Carolina											
Mississippi State											
at Ole Miss											
at Arkansas											
Alabama											
Florida											
at Miss. State											
Vanderbilt											
at Georgia											
Auburn											
SEC Tournament											

## Aaron Dotson's Career Stats

YEAR	GP-GS	MIN/AVG	FG-FGA	PCT.	3FG-FGA	PCT.	FT-FTA	PCT.	REB.-AVG	PF-FO	AST	TO	BLK	STL	PTS-AVG.
09-10	29-17	539-18.6	32-109	.294	7-46	.152	23-43	.535	48-1.7	61-3	29	33	12	12	93-3.2
10-11	9-9	265-29.4	28-54	.519	11-18	.611	29-39	.744	27-3.0	27-1	22	21	5	5	96-10.7
<b>Totals</b>	<b>38-26</b>	<b>804-21.2</b>	<b>60-163</b>	<b>.368</b>	<b>18-64</b>	<b>.281</b>	<b>52-82</b>	<b>.634</b>	<b>75-2.0</b>	<b>88-4</b>	<b>51</b>	<b>54</b>	<b>17</b>	<b>17</b>	<b>190-5.0</b>

# The Last Time LSU ...

## ALL GAMES

### Scoring

Less Than 50 points	49 -- vs. Tenn. (SECT) (49-59), 3/11/10
50 or more points	69 -- vs. Coastal Carolina (69-78), 12/13/10
60 or more points	69 -- vs. Coastal Carolina (69-78), 12/13/10
70 or more points	73 -- vs. Houston (73-57), 11/30/10
80 or more points	80 -- at S. Alabama (80-65), 11/28/10
90 or more points	97 -- at Miss. State (97-94), 2/11/09
100 or more points	104 -- vs. Nicholls State (104-57), 11/21/05

### Opponents Scoring

Less than 50 points	36 -- by Centenary (36-78), 11/24/10
50 or more points	78 -- by Coastal Carolina (78-69), 12/13/10
60 or more points	78 -- by Coastal Carolina (78-69), 12/13/10
70 or more points	78 -- by Coastal Carolina (78-69), 12/13/10
80 or more points	87 -- by Kentucky (87-52), 2/10/10
90 or more points	94-- by Miss. State (94-97), 2/11/09
100 or more points	101 -- by Ohio State (101-113), 1-15-05

### Field Goal Percentage

Shot 29 percent or less	29.2 -- at Alabama (14-48), 1/27/10
Shot 30 percent or more	40.6 -- vs. Coastal Carolina (26-64), 12/13/10
Shot 40 percent or more	40.6 -- vs. Coastal Carolina (26-64), 12/13/10
Shot 50 percent or more	50.0 -- vs. Houston (26-52), 11/30/10
Shot 60 percent or more	60.0 -- vs. NW State (24-40), 11/12/10
Shot 70 percent or more	70.3 -- vs. Centenary (45-64), 1-15-03

### Opponents Field Goal Percentage

Shot 29 percent or less	28.3 -- by Centenary (13-46), 11/24/10
Shot 30 percent or more	45.0 -- by Coastal Carolina (27-60), 12/13/10
Shot 40 percent or more	45.0 -- by Coastal Carolina (27-60), 12/13/10
Shot 50 percent or more	51.0 -- by Ole Miss (26-51), 3/4/10
Shot 60 percent or more	61.0 -- by Arizona State (25-41), 11/27/09

### Three-Point FG Percentage

Shot less than 10 pct	7.1 -- at Xavier (1-14), 12/29/09
Shot 10 percent or more	31.8 -- vs. Coastal Carolina (7-22), 12/13/10
Shot 20 percent or more	31.8 -- vs. Coastal Carolina (7-22), 12/13/10
Shot 30 percent or more	31.8 -- vs. Coastal Carolina (7-22), 12/13/10
Shot 40 percent or more	42.9 -- vs. Central Michigan (3-7), 12/11/10
Shot 50 percent or more	70.6 -- at S. Alabama (12-17), 11/28/10
Shot 60 percent or more	70.6 -- at S. Alabama (12-17), 11/28/10

### Opponents Three-Point FG Percentage

Shot less than 10 pct	7.1 -- by Georgia (1-14), 1/25/06
Shot 10 percent or more	35.7 -- by Coastal Carolina (5-14), 12/13/10
Shot 20 percent or more	35.7 -- by Coastal Carolina (5-14), 12/13/10
Shot 30 percent or more	35.7 -- by Coastal Carolina (5-14), 12/13/10
Shot 40 percent or more	46.4 -- by Auburn (13-28), 2/27/10
Shot 50 percent or more	52.9 -- by Alabama (9-17), 1/27/10
Shot 60 percent or more	60.0 -- by McNeese State (9-15), 12/22/08

### Free Throw Percentage

Shot less than 50 pct	46.7 -- at Ole Miss (7-15), 1/12/08
Shot 50 percent or more	58.8 -- vs. Coastal Carolina (12/13/10)
Shot 60 percent or more	72.7 -- vs. Central Michigan (16-22), 12/11/10
Shot 70 percent or more	72.7 -- vs. Central Michigan (16-22), 12/11/10
Shot 80 percent or more	90.0 -- vs. Georgia (9-10), 3/6/10
Shot 90 percent or more	90.0 -- vs. Georgia (9-10), 3/6/10
Shot 100 percent	100.0 -- vs. Grambling State (4-4), 12/13/08

### Rebounds

Less than 29 rebounds	29 -- at Arkansas, 2/10/10
Had 30 or more rebounds	35 -- vs. Coastal Carolina, 12/13/10
Had 40 or more rebounds	43 -- vs. Centenary, 11/24/10
Had 50 or more rebounds	52 -- vs. UT-Martin, 11/18/10
Had 60 or more rebounds	60 -- vs. Troy State, 12-22-98

### Opponent Rebounds

Less than 20 rebounds	17 -- vs. Nicholls State, 12/17/08
Had 20 or more rebounds	45 -- by Coastal Carolina, 12/13/10
Had 30 or more rebounds	45 -- by Coastal Carolina, 12/13/10
Had 40 or more rebounds	45 -- by Coastal Carolina, 12/13/10
Had 50 or more rebounds	53 -- by Kentucky, 2/6/10

### Assists

Less than 5 assists	4 -- vs. Alabama, 1-27-10
5 assists or more	13 -- vs. Coastal Carolina, 12/13/10
10 assists or more	13 -- vs. Coastal Carolina, 12/13/10
15 assists or more	17 -- vs. Centenary, 11/24/10
20 assists or more	22 -- vs. McNeese, 1/4/10
25 assists or more	26 -- vs. Troy, 11/30/08
30 or more assists	33 -- vs. Georgia State, 12-28-94

### Opponent Assists

Less than 5 assists	2 -- by Central Michigan, 12/11/10
5 assists or more	7 -- by Coastal Carolina, 12/13/10
10 assists or more	10 -- by S. Alabama, 11/28/10
15 assists or more	17 -- by Ole Miss, 3/4/10
20 assists or more	21 -- by Vanderbilt, 1/19/08
25 assists or more	28 -- by Fresno State, 11/26/99
30 assists or more	33 -- by Kentucky, 1-16-96

### Blocks

0 blocks	0 -- at Miss. State, 1/30/10
1 or more blocks	4 -- vs. Coastal Carolina, 12/13/10
5 or more blocks	5 -- vs. Houston, 11/30/10
10 or more blocks	11 -- vs. Ole Miss, 2/14/09
15 or more blocks	16 -- vs. Alcorn State, 11/20/08

### Opponent Blocks

0 blocks	0 -- by Western Kentucky, 11/17/09
1 or more blocks	5 -- by Coastal Carolina, 12/13/10
5 or more blocks	5 -- by Coastal Carolina, 12/13/10
10 or more blocks	11 -- by UConn, 1/6/07

### Steals

0 steals	0 -- vs. Georgia Tech, 3-17-90
1 or more steals	5 -- vs. Coastal Carolina, 12/13/10
5 or more steals	5 -- vs. Coastal Carolina, 12/13/10
10 or more steals	10 -- vs. Houston, 11/30/10
15 or more steals	22 -- vs. Arkansas, 2-17-01

### Opponent Steals

0 steals	0 -- by Washington State, 12/27/08
1 or more steals	8 -- by Coastal Carolina, 12/13/10
5 or more steals	8 -- by Coastal Carolina, 12/13/10
10 or more steals	12 -- by Nicholls, 11/16/10
15 or more steals	16 -- by Miami (Fla.), 12-27-01

# The Last Time An LSU Player...

## ALL GAMES

Scored 20 or more points .....	21 Andre Stringer, at South Alabama, 11/28/10
Scored 25 or more points.....	26 Bo Spencer, at Auburn, 2/27/10
Scored 30 or more points .....	38 Tasmin Mitchell, vs. Auburn, 1/20/10
Scored 35 or more points.....	38 Tasmin Mitchell, vs. Auburn, 1/20/10
Scored 40 or more points .....	41 Tasmin Mitchell, at Miss State, 2/11/09
Scored 45 or more points .....	46 Chris Jackson, vs. Vanderbilt, 2-18-90
Scored 50 or more points .....	51 Chris Jackson, vs. Texas, 1-2-90
Scored 55 or more points .....	55 Chris Jackson, vs. Ole Miss, 3-4-89
Scored 60 or more .....	64 Pete Maravich, vs. Kentucky, 2-21-70
Scored double figures in 5 straight games.....	7 Andre Stringer, 11/12/10 to 11/28/10
Scored double figures in 10 straight games .....	15 Tasmin Mitchell, 11/27/09 to 1/23/10
Scored double figures in 15 straight games .....	15 Tasmin Mitchell, 11/27/09 to 1/23/10
Scored double figures in 20 straight games.....	48 Glen Davis, 3/5/05 to 12/17/06
Scored double figures in 25 straight games.....	48 Glen Davis, 3/5/05 to 12/17/06
Scored double figures in 30 straight games.....	48 Glen Davis, 3/5/05 to 12/17/06
Scored double figures in 35 straight games.....	48 Glen Davis, 3/5/05 to 12/17/06
Scored double figures in 40 straight games .....	48 Glen Davis, 3/5/05 to 12/17/06
Scored double figures in 45 or more straight game .....	48 Glen Davis, 3/5/05 to 12/17/06
Scored 20 points or more in 2 straight games .....	2 Bo Spencer, 26 at Auburn (2/27/10); 20 at Ole Miss (3/4/10)
Scored 20 points or more in 3 straight games .....	3 Bo Spencer, 22 vs. Rice (12/19/09); 23 vs. Washington State (12/22/09); 20 at Xavier (12/29/09)
Scored 20 points or more in 4 straight games .....	4 Tasmin Mitchell, 26 vs. Louisiana-Lafayette (12/1/09); 24 vs. Northwestern State (12/12/09); 24 vs. Southeastern Louisiana (12/14/09); 27 vs. Nicholls State (12/17/09)
Scored 20 points or more in 5 straight games .....	6 Marcus Thornton, 25 at Ole Miss (1/12/08); 27 vs. Auburn (1/16/08); 27 at Vandy (1/19/08); 20 vs. Arkansas (1/26/08); 38 at Auburn (1/30/08); 22 vs. Alabama (2/2/08)
Scored 30 points or more in consecutive games.....	2 Marcus Thornton, 31 vs. Miss. State (1/21/09); 30 vs. Xavier (1/24/09)
Made 10-14 field goals in a game .....	10 Tasmin Mitchell, at Miss. State, 1/30/10
Made 15 or more field goals in a game.....	15 Tasmin Mitchell, vs. Auburn, 1/20/10
Attempted 15-19 field goals in a game .....	15 Andre Stringer, vs. Coastal Carolina, 12/13/10
Attempted 20-24 field goals in a game .....	16 Ralston Turner, vs. Coastal Carolina, 12/13/10
Attempted 25-29 field goals in a game .....	21 Tasmin Mitchell, vs. Georgia, 3/6/10
Attempted 30 or more field goals in a game .....	27 Marcus Thornton, at Miss. State, 3/8/08
Made 5 three pointers in a game .....	34 Ronnie Henderson, vs. Oklahoma State, 12-20-94
Made 6-9 three pointers in a game.....	5 Bo Spencer, at Ole Miss, 3/4/10
Made 10 or more three pointers in a game.....	6 Marcus Thornton, vs. Florida, 2/24/09
Attempted 7 three pointers in a game.....	10 Chris Jackson, vs. Tennessee, 2-10-90
Attempted 8-10 three pointers in a game .....	8 Andre Stringer, vs. Coastal Carolina, 12/13/10
Attempted 11 or more three pointers in a game .....	9 Ralston Turner, vs. Coastal Carolina, 12/13/10
	8 Andre Stringer, vs. Coastal Carolina, 12/13/10
	9 Ralston Turner, vs. Coastal Carolina, 12/13/10
	11 Bo Spencer, at Ole Miss, 3/4/10

# The Last Time An LSU Player...

## ALL GAMES

Had 10 or more rebounds .....	11 Storm Warren, vs. Houston, 11/30/10
Had 15 or more rebound .....	15 Malcolm White, vs. UT-Martin, 11/18/10
Had 20 or more rebounds .....	21 Jaime Lloreda, vs. McNeese State, 11-24-03
Had 10 or more rebounds in 2 straight games .....	2 Storm Warren, 14 vs. Nicholls, 11/16/10; 11 vs. UT-Martin, 11/18/10
Had 10 or more rebounds in 3 straight games .....	3 Tasmin Mitchell, 10 at Alabama, 1/27/10; 10 at Miss. State, 1/30/10; 17 vs. Tennessee, 2/4/10
.....	
Had 10 or more rebounds in 4 straight games .....	4 Tasmin Mitchell, 11 vs. Ole Miss, 1/23/10; 10 at Alabama, 1/27/10; 10 at Miss. State, 1/30/10; 17 vs. Tennessee, 2/4/10
.....	
Had 10 or more rebounds in 5 straight games .....	5 Tasmin Mitchell, 10 vs. Auburn, 1/20/10; 11 vs. Ole Miss, 1/23/10; 10 at Alabama, 1/27/10; 10 at Miss. State, 1/30/10; 17 vs. Tennessee, 2/4/10
.....	
Had 10 or more rebounds in 6 or more games.....	8 Glen Davis, 11 at Alabama, 2/4/06; 16 vs. Arkansas, 2/8/06; 15 at Florida, 2/11/06; 13 vs. Miss. State, 2/15/06; 11 at Auburn, 2/18/06; 11 at Vandy, 2/22/06; 15 vs. Kentucky, 2/25/06; 10 at S. Carolina, 2/28/06
.....	
.....	
Had 9 offensive rebounds in a game.....	9 Malcolm White, vs. UT-Martin, 11/18/10
Had 10 defensive rebounds in a game.....	12 Storm Warren, vs. Nicholls, 11/16/10
.....	
Had 5 or more assists.....	5 Andre Stringer, vs. Coastal Carolina, 12/13/10
Had 8 or more assists.....	9 Garrett Temple, vs. Ole Miss, 2/14/09
Had 11 or more assists .....	12 Torris Bright, vs. McNeese State, 12-7-02
Had 16 or more assists .....	18 Randy Livingston, vs. George Mason, 12-3-94
.....	
Had 3 or more blocks in a game .....	4 Storm Warren, vs. Houston, 11/30/10
Had 5 or more blocks in a game .....	6 Chris Johnson, at Arkansas, 2/18/09
Had 8 or more blocks in a game .....	9 Tyrus Thomas, vs. Tennessee, 1/14/06
Had 11 or more blocks in a game .....	11 Stromile Swift, vs. Alabama, 2-10-99
.....	
Had 3 or more steals in a game.....	3 Storm Warren, vs. Houston, 11/30/10
.....	Andre Stringer, vs. Houston, 11/30/10
Had 5 or more steals in a game.....	5 Chris Bass, vs. Northwestern St., 11/12/10
Had 8 or more steals in a game .....	8 Clarence Ceasar, vs. Auburn, 1-8-94
Had 10 or more steals in a game .....	10 Shawn Griggs, vs. Tennessee, 2-23-91
.....	
Had a double-double .....	Storm Warren, vs. Houston, 12 pts, 11 reb., 11/30/10
Had a double-double in 2 straight games .....	Tasmin Mitchell, at Miss. State, 26 pts-10 reb., 1/30/10; vs. Tennessee, 13 pts-17 reb., 2/4/10
.....	
Had a double-double in 3 or more straight games.....	3 Storm Warren, vs. Northwestern State, 21 pts-16 reb., 12/12/09; vs. Southeastern La. 14 pts-12 reb, 12/14/09; vs. Nicholls St., 13 pts-11 reb., vs. 12/17/09
.....	
Had a double-double in 4 or more straight games .....	4 Storm Warren, vs. UL-Lafayette, 18 pts-16 reb., 12/1/09; vs. Northwestern State, 21 pts-16 reb., 12/1/09; vs. Southeastern La. 14 pts-12 reb., 12/14/09; vs. Nicholls State, 13 pts-11 reb., 12/17/09
.....	
.....	
Had a triple-double .....	Shaquille O'Neal, 26 pts-13 reb-11 blks, vs. BYU, 3-19-92
.....	
Played 40 minutes in a game.....	40 Bo Spencer vs. Tennessee (SECT), 3/11/10
Played 41 or more in a game .....	44 Bo Spencer, vs. Washington State, 12/22/09
.....	45 Tasmin Mitchell, vs. Washington State, 12/22/09
Played 50 or more minutes in a game .....	54 Maurice Carter, vs. Alabama, 2-10-99



**THE STAT CREW SYSTEM**  
**LSU Combined Team Statistics (as of Dec 13, 2010)**  
**All games**

<b>RECORD:</b>	<b>OVERALL</b>	<b>HOME</b>	<b>AWAY</b>	<b>NEUTRAL</b>
ALL GAMES	6-3	5-2	1-0	0-1
CONFERENCE	0-0	0-0	0-0	0-0
NON-CONFERENCE	6-3	5-2	1-0	0-1

##	Player	gp-gs	min	avg	Total		3-Point		F-Throw		Rebounds				pf	dq	a	to	blk	stl	pts	avg
					fg-fga	fg%	3fg-fga	3fg%	ft-fta	ft%	off	def	tot	avg								
10	STRINGER, Andre	9-7	246	27.3	34-88	.386	21-53	.396	48-58	.828	4	15	19	2.1	20	0	26	26	1	13	137	15.2
22	TURNER, Ralston	9-9	271	30.1	36-81	.444	17-45	.378	23-33	.697	3	27	30	3.3	19	1	16	21	1	6	112	12.4
45	DOTSON, Aaron	9-9	265	29.4	28-54	.519	11-18	.611	29-39	.744	8	19	27	3.0	27	1	22	21	5	5	96	10.7
05	WHITE, Malcolm	9-9	213	23.7	29-58	.500	0-0	.000	17-31	.548	22	23	45	5.0	27	1	2	12	11	3	75	8.3
24	WARREN, Storm	9-9	211	23.4	29-60	.483	0-0	.000	6-9	.667	20	41	61	6.8	26	1	4	13	12	14	64	7.1
21	DERENBECKER, Matt	9-0	134	14.9	15-37	.405	7-22	.318	2-3	.667	2	12	14	1.6	14	0	8	8	1	1	39	4.3
13	LUDWIG, Eddie	9-0	158	17.6	9-19	.474	0-2	.000	21-24	.875	14	15	29	3.2	18	1	9	12	0	8	39	4.3
03	GREEN, Garrett	9-0	101	11.2	16-36	.444	0-2	.000	4-14	.286	13	30	43	4.8	16	1	1	7	3	7	36	4.0
04	BASS, Chris	9-2	140	15.6	9-15	.600	0-0	.000	6-15	.400	3	18	21	2.3	11	0	21	13	1	6	24	2.7
25	POPULIST, Daron	6-0	39	6.5	3-8	.375	2-4	.500	0-0	.000	0	5	5	0.8	8	0	6	3	0	0	8	1.3
14	COURTNEY, Jalen	6-0	26	4.3	2-4	.500	0-1	.000	3-4	.750	0	4	4	0.7	3	0	0	0	0	0	7	1.2
15	HARRIS, Dennis	2-0	21	10.5	1-3	.333	0-0	.000	0-0	.000	0	3	3	1.5	2	0	0	2	2	2	2	1.0
Team											19	18	37				6					
Total.....		9	1825		211-463	.456	58-147	.395	159-230	.691	108	230	338	37.6	191	6	115	144	37	65	639	71.0
Opponents.....		9	1825		188-498	.378	48-153	.314	133-206	.646	120	175	295	32.8	197	4	60	130	33	73	557	61.9

<b>TEAM STATISTICS</b>	<b>LSU</b>	<b>OPP</b>	<b>Date</b>	<b>Opponent</b>	<b>Score</b>	<b>Att.</b>
SCORING	639	557	11/12/10	NORTHWESTERN STATE	w 87-78	7842
Points per game	71.0	61.9	11/16/10	NICHOLLS STATE	L 53-62	6913
Scoring margin	+9.1	-	11/18/10	TENNESSEE-MARTIN	w 79-56	6607
FIELD GOALS-ATT	211-463	188-498	11/21/10	vs Memphis	L 61-70	7941
Field goal pct	.456	.378	11/24/10	CENTENARY	w 78-36	6742
3 POINT FG-ATT	58-147	48-153	11/28/10	at South Alabama	w 80-65	3653
3-point FG pct	.395	.314	11/30/10	HOUSTON	w 73-57	6688
3-pt FG made per game	6.4	5.3	12/11/10	CENTRAL MICHIGAN	w 59-55	6898
FREE THROWS-ATT	159-230	133-206	12/13/10	COASTAL CAROLINA	Lot 69-78	6425
Free throw pct	.691	.646				
F-Throws made per game	17.7	14.8				
REBOUNDS	338	295				
Rebounds per game	37.6	32.8				
Rebounding margin	+4.8	-				
ASSISTS	115	60				
Assists per game	12.8	6.7				
TURNOVERS	144	130				
Turnovers per game	16.0	14.4				
Turnover margin	-1.6	-				
Assist/turnover ratio	0.8	0.5				
STEALS	65	73				
Steals per game	7.2	8.1				
BLOCKS	37	33				
Blocks per game	4.1	3.7				
ATTENDANCE	48115	11594				
Home games-Avg/Game	7-6874	1-3653				
Neutral site-Avg/Game	-	1-7941				

\* - Conference game

<b>Score by Periods</b>	<b>1st</b>	<b>2nd</b>	<b>OT</b>	<b>Totals</b>
LSU	321	313	5	639
Opponents	237	306	14	557

**THE STAT CREW SYSTEM**  
**LSU Category Leaders (as of Dec 13, 2010)**  
**All games**

<b>Points</b>	<b>G</b>	<b>Pts</b>	<b>Pts/G</b>	<b>Scoring Average</b>	<b>G</b>	<b>Pts</b>	<b>Avg/G</b>
STRINGER, Andre	9	137	15.2	STRINGER, Andre	9	137	15.2
TURNER, Ralston	9	112	12.4	TURNER, Ralston	9	112	12.4
DOTSON, Aaron	9	96	10.7	DOTSON, Aaron	9	96	10.7
WHITE, Malcolm	9	75	8.3	WHITE, Malcolm	9	75	8.3
WARREN, Storm	9	64	7.1	WARREN, Storm	9	64	7.1
LUDWIG, Eddie	9	39	4.3	LUDWIG, Eddie	9	39	4.3
DERENBECKER, Matt	9	39	4.3	DERENBECKER, Matt	9	39	4.3
GREEN, Garrett	9	36	4.0	GREEN, Garrett	9	36	4.0
BASS, Chris	9	24	2.7	BASS, Chris	9	24	2.7
POPULIST, Daron	6	8	1.3	POPULIST, Daron	6	8	1.3
COURTNEY, Jalen	6	7	1.2	COURTNEY, Jalen	6	7	1.2
HARRIS, Dennis	2	2	1.0	HARRIS, Dennis	2	2	1.0

<b>FG Percentage</b>	<b>FG</b>	<b>Att</b>	<b>Pct</b>	<b>Field Goal Attempts</b>	<b>G</b>	<b>Att</b>	<b>Att/G</b>
BASS, Chris	9	15	.600	STRINGER, Andre	9	88	9.8
DOTSON, Aaron	28	54	.519	TURNER, Ralston	9	81	9.0
WHITE, Malcolm	29	58	.500	WARREN, Storm	9	60	6.7
COURTNEY, Jalen	2	4	.500	WHITE, Malcolm	9	58	6.4
WARREN, Storm	29	60	.483	DOTSON, Aaron	9	54	6.0
LUDWIG, Eddie	9	19	.474	<b>Field Goals Made</b>	<b>G</b>	<b>Made</b>	<b>Made/G</b>
GREEN, Garrett	16	36	.444	TURNER, Ralston	9	36	4.0
TURNER, Ralston	36	81	.444	STRINGER, Andre	9	34	3.8
DERENBECKER, Matt	15	37	.405	WHITE, Malcolm	9	29	3.2
STRINGER, Andre	34	88	.386	WARREN, Storm	9	29	3.2
POPULIST, Daron	3	8	.375	DOTSON, Aaron	9	28	3.1
HARRIS, Dennis	1	3	.333				

<b>3-Point Percentage</b>	<b>3FG</b>	<b>Att</b>	<b>Pct</b>	<b>3-Point FG Attempts</b>	<b>G</b>	<b>Att</b>	<b>Att/G</b>
DOTSON, Aaron	11	18	.611	STRINGER, Andre	9	53	5.9
POPULIST, Daron	2	4	.500	TURNER, Ralston	9	45	5.0
STRINGER, Andre	21	53	.396	DERENBECKER, Matt	9	22	2.4
TURNER, Ralston	17	45	.378	DOTSON, Aaron	9	18	2.0
DERENBECKER, Matt	7	22	.318	POPULIST, Daron	6	4	0.7
LUDWIG, Eddie	0	2	.000	<b>3-Point FG Made</b>	<b>G</b>	<b>Made</b>	<b>Made/G</b>
GREEN, Garrett	0	2	.000	STRINGER, Andre	9	21	2.3
COURTNEY, Jalen	0	1	.000	TURNER, Ralston	9	17	1.9
				DOTSON, Aaron	9	11	1.2
				DERENBECKER, Matt	9	7	0.8
				POPULIST, Daron	6	2	0.3

<b>Free Throw Percent</b>	<b>FG</b>	<b>Att</b>	<b>Pct</b>	<b>Free Throw Attempts</b>	<b>G</b>	<b>Att</b>	<b>Att/G</b>
LUDWIG, Eddie	21	24	.875	STRINGER, Andre	9	58	6.4
STRINGER, Andre	48	58	.828	DOTSON, Aaron	9	39	4.3
COURTNEY, Jalen	3	4	.750	TURNER, Ralston	9	33	3.7
DOTSON, Aaron	29	39	.744	WHITE, Malcolm	9	31	3.4
TURNER, Ralston	23	33	.697	LUDWIG, Eddie	9	24	2.7
DERENBECKER, Matt	2	3	.667	<b>Free Throws Made</b>	<b>G</b>	<b>Made</b>	<b>Made/G</b>
WARREN, Storm	6	9	.667	STRINGER, Andre	9	48	5.3
WHITE, Malcolm	17	31	.548	DOTSON, Aaron	9	29	3.2
BASS, Chris	6	15	.400	TURNER, Ralston	9	23	2.6
GREEN, Garrett	4	14	.286	LUDWIG, Eddie	9	21	2.3
				WHITE, Malcolm	9	17	1.9

**THE STAT CREW SYSTEM**  
**LSU Category Leaders (as of Dec 13, 2010)**  
**All games**

<u>Rebounds</u>	<u>G</u>	<u>Reb</u>	<u>Reb/G</u>	<u>Assists</u>	<u>G</u>	<u>No.</u>	<u>Ast/G</u>
WARREN, Storm	9	61	6.8	STRINGER, Andre	9	26	2.9
WHITE, Malcolm	9	45	5.0	DOTSON, Aaron	9	22	2.4
GREEN, Garrett	9	43	4.8	BASS, Chris	9	21	2.3
TURNER, Ralston	9	30	3.3	TURNER, Ralston	9	16	1.8
LUDWIG, Eddie	9	29	3.2	LUDWIG, Eddie	9	9	1.0

<u>Rebound Average</u>	<u>G</u>	<u>Reb</u>	<u>Avg/G</u>	<u>Steals</u>	<u>G</u>	<u>No.</u>	<u>Stl/G</u>
WARREN, Storm	9	61	6.8	WARREN, Storm	9	14	1.6
WHITE, Malcolm	9	45	5.0	STRINGER, Andre	9	13	1.4
GREEN, Garrett	9	43	4.8	LUDWIG, Eddie	9	8	0.9
TURNER, Ralston	9	30	3.3	GREEN, Garrett	9	7	0.8
LUDWIG, Eddie	9	29	3.2	TURNER, Ralston	9	6	0.7
				BASS, Chris	9	6	0.7

<u>Offensive Rebounds</u>	<u>G</u>	<u>No.</u>	<u>Avg/G</u>	<u>Blocked Shots</u>	<u>G</u>	<u>No.</u>	<u>Blk/G</u>
WHITE, Malcolm	9	22	2.4	WARREN, Storm	9	12	1.3
WARREN, Storm	9	20	2.2	WHITE, Malcolm	9	11	1.2
LUDWIG, Eddie	9	14	1.6	DOTSON, Aaron	9	5	0.6
GREEN, Garrett	9	13	1.4	GREEN, Garrett	9	3	0.3
DOTSON, Aaron	9	8	0.9	HARRIS, Dennis	2	2	1.0

<u>Defensive Rebounds</u>	<u>G</u>	<u>No.</u>	<u>Avg/G</u>	<u>Minutes</u>	<u>G</u>	<u>No.</u>	<u>Min/G</u>
WARREN, Storm	9	41	4.6	TURNER, Ralston	9	271	30.1
GREEN, Garrett	9	30	3.3	DOTSON, Aaron	9	265	29.4
TURNER, Ralston	9	27	3.0	STRINGER, Andre	9	246	27.3
WHITE, Malcolm	9	23	2.6	WHITE, Malcolm	9	213	23.7
DOTSON, Aaron	9	19	2.1	WARREN, Storm	9	211	23.4

<u>Fouls</u>	<u>G</u>	<u>No.</u>	<u>Per/G</u>	<u>Turnovers</u>	<u>G</u>	<u>No.</u>	<u>TO/G</u>
WHITE, Malcolm	9	27	3.0	STRINGER, Andre	9	26	2.9
DOTSON, Aaron	9	27	3.0	DOTSON, Aaron	9	21	2.3
WARREN, Storm	9	26	2.9	TURNER, Ralston	9	21	2.3
STRINGER, Andre	9	20	2.2	BASS, Chris	9	13	1.4
TURNER, Ralston	9	19	2.1	WARREN, Storm	9	13	1.4

<u>Foulouts</u>	<u>G</u>	<u>No.</u>
WHITE, Malcolm	9	1
DOTSON, Aaron	9	1
WARREN, Storm	9	1
GREEN, Garrett	9	1
TURNER, Ralston	9	1
LUDWIG, Eddie	9	1

THE STAT CREW SYSTEM  
 LSU Team Game-by-Game (as of Dec 13, 2010)  
 All games

TEAM STATISTICS

Opponent	Date	Score		Total		3-Pointers		Free throws		Rebounds				pf	a	t/o	blk	stl	pts	avg
				fg-fga	pct	3fg-fga	pct	ft-fta	pct	off	def	tot	avg							
NORTHWESTERN STATE	11/12/10	87-78	W	24-40	.600	7-15	.467	32-46	.696	9	24	33	33.0	30	13	25	4	13	87	87.0
NICHOLLS STATE	11/16/10	53-62	L	16-43	.372	6-18	.333	15-21	.714	7	30	37	35.0	22	8	18	4	3	53	70.0
TENNESSEE-MARTIN	11/18/10	79-56	W	27-62	.435	3-15	.200	22-29	.759	22	30	52	40.7	20	11	15	5	7	79	73.0
vs Memphis	11/21/10	61-70	L	18-52	.346	5-15	.333	20-29	.690	9	26	35	39.2	27	13	13	4	7	61	70.0
CENTENARY	11/24/10	78-36	W	29-61	.475	10-24	.417	10-17	.588	17	26	43	40.0	12	17	9	4	7	78	71.6
at South Alabama	11/28/10	80-65	W	25-47	.532	12-17	.706	18-28	.643	9	29	38	39.7	24	14	14	3	5	80	73.0
HOUSTON	11/30/10	73-57	W	26-52	.500	5-14	.357	16-21	.762	14	21	35	39.0	16	14	17	5	10	73	73.0
CENTRAL MICHIGAN	12/11/10	59-55	W	20-42	.476	3-7	.429	16-22	.727	7	23	30	37.9	17	12	17	4	8	59	71.2
COASTAL CAROLINA	12/13/10	69-78	Lot	26-64	.406	7-22	.318	10-17	.588	14	21	35	37.6	23	13	16	4	5	69	71.0
LSU		639		211-463	.456	58-147	.395	159-230	.691	108	230	338	37.6	191	115	144	37	65	639	71.0
Opponents		557		188-498	.378	48-153	.314	133-206	.646	120	175	295	32.8	197	60	130	33	73	557	61.9

Games played: 9  
 Points/game: 71.0  
 FG Pct: 45.6  
 3FG Pct: 39.5  
 FT Pct: 69.1

Rebounds/game: 37.6  
 Assists/game: 12.8  
 Turnovers/game: 16.0  
 Assist/turnover ratio: 0.8  
 Steals/game: 7.2  
 Blocks/game: 4.1

THE STAT CREW SYSTEM  
 LSU Opponent Game-by-Game (as of Dec 13, 2010)  
 All games

OPPONENT STATISTICS

Opponent	Date	Score		Total		3-Pointers		Free throws		Rebounds				pf	a	t/o	blk	stl	pts	avg
				fg-fga	pct	3fg-fga	pct	ft-fta	pct	off	def	tot	avg							
NORTHWESTERN STATE	11/12/10	87-78	W	29-70	.414	7-26	.269	13-27	.481	24	12	36	36.0	32	8	17	3	14	78	78.0
NICHOLLS STATE	11/16/10	53-62	L	19-53	.358	6-19	.316	18-27	.667	10	23	33	34.5	19	7	8	2	12	62	70.0
TENNESSEE-MARTIN	11/18/10	79-56	W	19-60	.317	4-18	.222	14-22	.636	16	16	32	33.7	23	4	14	2	8	56	65.3
vs Memphis	11/21/10	61-70	L	23-49	.469	7-19	.368	17-28	.607	6	27	33	33.5	27	9	16	5	7	70	66.5
CENTENARY	11/24/10	78-36	W	13-46	.283	4-15	.267	6-10	.600	7	19	26	32.0	16	7	15	4	5	36	60.4
at South Alabama	11/28/10	80-65	W	18-54	.333	6-16	.375	23-31	.742	12	17	29	31.5	24	10	9	7	4	65	61.2
HOUSTON	11/30/10	73-57	W	23-58	.397	6-16	.375	5-12	.417	18	14	32	31.6	20	6	19	3	6	57	60.6
CENTRAL MICHIGAN	12/11/10	59-55	W	17-48	.354	3-10	.300	18-23	.783	11	18	29	31.3	18	2	16	2	9	55	59.9
COASTAL CAROLINA	12/13/10	69-78	Lot	27-60	.450	5-14	.357	19-26	.731	16	29	45	32.8	18	7	16	5	8	78	61.9
Opponents		557		188-498	.378	48-153	.314	133-206	.646	120	175	295	32.8	197	60	130	33	73	557	61.9
LSU		639		211-463	.456	58-147	.395	159-230	.691	108	230	338	37.6	191	115	144	37	65	639	71.0

Games played: 9  
 Points/game: 61.9  
 FG Pct: 37.8  
 3FG Pct: 31.4  
 FT Pct: 64.6

Rebounds/game: 32.8  
 Assists/game: 6.7  
 Turnovers/game: 14.4  
 Assist/turnover ratio: 0.5  
 Steals/game: 8.1  
 Blocks/game: 3.7

THE STAT CREW SYSTEM  
 LSU Points-Rebounds-Assists (as of Dec 13, 2010)  
 All games

Opponent	Date	Score		03	04	05	10	13	14	15
				GREEN,GARR	BASS,CHRIS	WHITE,MALC	STRINGER,A	LUDWIG,EDD	COURTNEY,J	HARRIS,DEN
NORTHWESTERN STATE	11/12/10	87-78	w	2-6-0	4-2-2	12-4-0	21-3-5	4-3-0	2-0-0	DNP
NICHOLLS STATE	11/16/10	53-62	L	0-4-1	0-2-0	2-2-0	14-2-3	4-2-0	DNP	DNP
TENNESSEE-MARTIN	11/18/10	79-56	w	3-3-0	4-3-5	12-15-2	15-2-1	5-1-0	1-1-0	DNP
vs Memphis	11/21/10	61-70	L	8-4-0	0-2-4	5-4-0	13-2-2	8-8-1	2-0-0	DNP
CENTENARY	11/24/10	78-36	w	8-9-0	3-5-1	14-7-0	16-0-4	6-5-4	2-3-0	DNP
at South Alabama	11/28/10	80-65	w	0-5-0	1-2-0	4-4-0	21-4-3	4-4-4	0-0-0	DNP
HOUSTON	11/30/10	73-57	w	4-5-0	2-1-4	9-2-0	13-3-3	5-3-0	DNP	DNP
CENTRAL MICHIGAN	12/11/10	59-55	w	2-3-0	6-4-4	12-4-0	8-1-0	3-2-0	DNP	2-0-0
COASTAL CAROLINA	12/13/10	69-78	L	9-4-0	4-0-1	5-3-0	16-2-5	0-1-0	0-0-0	0-3-0

Opponent	Date	Score		21	22	24	25	45
				DERENBECKE	TURNER,RAL	WARREN,STO	POPULIST,D	DOTSON,AAR
NORTHWESTERN STATE	11/12/10	87-78	w	0-0-0	21-5-2	4-4-2	0-0-2	17-3-0
NICHOLLS STATE	11/16/10	53-62	L	14-6-0	6-2-2	8-14-1	0-0-0	5-2-1
TENNESSEE-MARTIN	11/18/10	79-56	w	2-2-0	10-1-0	12-11-0	2-2-1	13-6-2
vs Memphis	11/21/10	61-70	L	0-1-1	11-2-1	2-3-0	DNP	12-4-4
CENTENARY	11/24/10	78-36	w	6-0-1	8-3-1	1-6-1	6-2-1	8-1-4
at South Alabama	11/28/10	80-65	w	9-4-2	17-1-0	9-3-0	0-1-1	15-3-4
HOUSTON	11/30/10	73-57	w	5-0-0	15-3-5	12-11-0	DNP	8-3-2
CENTRAL MICHIGAN	12/11/10	59-55	w	0-0-1	9-7-4	8-4-0	0-0-1	9-0-2
COASTAL CAROLINA	12/13/10	69-78	L	3-1-3	15-6-1	8-5-0	DNP	9-5-3

THE STAT CREW SYSTEM  
 LSU Team High/Low Analysis (as of Dec 13, 2010)  
 All games

LSU - TEAM GAME HIGHS

POINTS	87	NORTHWESTERN STATE (11/12/10)
	80	at South Alabama (11/28/10)
	79	TENNESSEE-MARTIN (11/18/10)
	78	CENTENARY (11/24/10)
FIELD GOALS MADE	73	HOUSTON (11/30/10)
	29	CENTENARY (11/24/10)
FIELD GOAL ATTEMPTS	27	TENNESSEE-MARTIN (11/18/10)
	64	COASTAL CAROLINA (12/13/10)
FIELD GOAL PERCENTAGE	62	TENNESSEE-MARTIN (11/18/10)
	.600 (24-40)	NORTHWESTERN STATE (11/12/10)
3 PT FIELD GOALS MADE	.532 (25-47)	at South Alabama (11/28/10)
	12	at South Alabama (11/28/10)
3 PT FG ATTEMPTS	10	CENTENARY (11/24/10)
	24	CENTENARY (11/24/10)
3 PT FG PERCENTAGE	22	COASTAL CAROLINA (12/13/10)
	.706 (12-17)	at South Alabama (11/28/10)
FREE THROWS MADE	.467 (7-15)	NORTHWESTERN STATE (11/12/10)
	32	NORTHWESTERN STATE (11/12/10)
FREE THROW ATTEMPTS	22	TENNESSEE-MARTIN (11/18/10)
	46	NORTHWESTERN STATE (11/12/10)
FREE THROW PERCENTAGE	29	vs Memphis (11/21/10)
	29	TENNESSEE-MARTIN (11/18/10)
REBOUNDS	.762 (16-21)	HOUSTON (11/30/10)
	.759 (22-29)	TENNESSEE-MARTIN (11/18/10)
ASSISTS	52	TENNESSEE-MARTIN (11/18/10)
	43	CENTENARY (11/24/10)
STEALS	17	CENTENARY (11/24/10)
	14	HOUSTON (11/30/10)
BLOCKED SHOTS	14	at South Alabama (11/28/10)
	13	NORTHWESTERN STATE (11/12/10)
TURNOVERS	10	HOUSTON (11/30/10)
	5	HOUSTON (11/30/10)
FOULS	5	TENNESSEE-MARTIN (11/18/10)
	25	NORTHWESTERN STATE (11/12/10)
	18	NICHOLLS STATE (11/16/10)
	30	NORTHWESTERN STATE (11/12/10)
	27	vs Memphis (11/21/10)

**THE STAT CREW SYSTEM**  
**LSU High/Low Analysis (as of Dec 13, 2010)**  
**All games**

**Opponent - GAME HIGHS**

POINTS	78		COASTAL CAROLINA (12/13/10)
	78		NORTHWESTERN STATE (11/12/10)
	70		vs Memphis (11/21/10)
	65		at South Alabama (11/28/10)
	62		NICHOLLS STATE (11/16/10)
FIELD GOALS MADE	29		NORTHWESTERN STATE (11/12/10)
	27		COASTAL CAROLINA (12/13/10)
FIELD GOAL ATTEMPTS	70		NORTHWESTERN STATE (11/12/10)
	60		COASTAL CAROLINA (12/13/10)
	60		TENNESSEE-MARTIN (11/18/10)
FIELD GOAL PERCENTAGE	.469	(23-49)	vs Memphis (11/21/10)
	.450	(27-60)	COASTAL CAROLINA (12/13/10)
3 PT FIELD GOALS MADE	7		vs Memphis (11/21/10)
	7		NORTHWESTERN STATE (11/12/10)
3 PT FG ATTEMPTS	26		NORTHWESTERN STATE (11/12/10)
	19		vs Memphis (11/21/10)
	19		NICHOLLS STATE (11/16/10)
3 PT FG PERCENTAGE	.375	(6-16)	HOUSTON (11/30/10)
	.375	(6-16)	at South Alabama (11/28/10)
FREE THROWS MADE	23		at South Alabama (11/28/10)
	19		COASTAL CAROLINA (12/13/10)
FREE THROW ATTEMPTS	31		at South Alabama (11/28/10)
	28		vs Memphis (11/21/10)
FREE THROW PERCENTAGE	.783	(18-23)	CENTRAL MICHIGAN (12/11/10)
	.742	(23-31)	at South Alabama (11/28/10)
REBOUNDS	45		COASTAL CAROLINA (12/13/10)
	36		NORTHWESTERN STATE (11/12/10)
ASSISTS	10		at South Alabama (11/28/10)
	9		vs Memphis (11/21/10)
STEALS	14		NORTHWESTERN STATE (11/12/10)
	12		NICHOLLS STATE (11/16/10)
BLOCKED SHOTS	7		at South Alabama (11/28/10)
	5		COASTAL CAROLINA (12/13/10)
	5		vs Memphis (11/21/10)
TURNOVERS	19		HOUSTON (11/30/10)
	17		NORTHWESTERN STATE (11/12/10)
FOULS	32		NORTHWESTERN STATE (11/12/10)
	27		vs Memphis (11/21/10)



THE STAT CREW SYSTEM  
 LSU High/Low Analysis (as of Dec 13, 2010)  
 All games

LSU - GAME LOWS

POINTS	53		NICHOLLS STATE (11/16/10)
	59		CENTRAL MICHIGAN (12/11/10)
	61		vs Memphis (11/21/10)
	69		COASTAL CAROLINA (12/13/10)
	73		HOUSTON (11/30/10)
FIELD GOALS MADE	16		NICHOLLS STATE (11/16/10)
	18		vs Memphis (11/21/10)
FIELD GOAL ATTEMPTS	40		NORTHWESTERN STATE (11/12/10)
	42		CENTRAL MICHIGAN (12/11/10)
FIELD GOAL PERCENTAGE	.346	(18-52)	vs Memphis (11/21/10)
	.372	(16-43)	NICHOLLS STATE (11/16/10)
3 PT FIELD GOALS MADE	3		TENNESSEE-MARTIN (11/18/10)
	3		CENTRAL MICHIGAN (12/11/10)
3 PT FG ATTEMPTS	7		CENTRAL MICHIGAN (12/11/10)
	14		HOUSTON (11/30/10)
3 PT FG PERCENTAGE	.200	(3-15)	TENNESSEE-MARTIN (11/18/10)
	.318	(7-22)	COASTAL CAROLINA (12/13/10)
FREE THROWS MADE	10		CENTENARY (11/24/10)
	10		COASTAL CAROLINA (12/13/10)
FREE THROW ATTEMPTS	17		CENTENARY (11/24/10)
	17		COASTAL CAROLINA (12/13/10)
FREE THROW PERCENTAGE	.588	(10-17)	CENTENARY (11/24/10)
	.588	(10-17)	COASTAL CAROLINA (12/13/10)
REBOUNDS	30		CENTRAL MICHIGAN (12/11/10)
	33		NORTHWESTERN STATE (11/12/10)
ASSISTS	8		NICHOLLS STATE (11/16/10)
	11		TENNESSEE-MARTIN (11/18/10)
STEALS	3		NICHOLLS STATE (11/16/10)
	5		at South Alabama (11/28/10)
	5		COASTAL CAROLINA (12/13/10)
BLOCKED SHOTS	3		at South Alabama (11/28/10)
	4		NORTHWESTERN STATE (11/12/10)
	4		NICHOLLS STATE (11/16/10)
	4		vs Memphis (11/21/10)
	4		CENTENARY (11/24/10)
	4		CENTRAL MICHIGAN (12/11/10)
	4		COASTAL CAROLINA (12/13/10)
TURNOVERS	9		CENTENARY (11/24/10)
	13		vs Memphis (11/21/10)
FOULS	12		CENTENARY (11/24/10)
	16		HOUSTON (11/30/10)

THE STAT CREW SYSTEM  
 LSU High/Low Analysis (as of Dec 13, 2010)  
 All games

Opponent - GAME LOWS

POINTS	36		CENTENARY (11/24/10)
	55		CENTRAL MICHIGAN (12/11/10)
	56		TENNESSEE-MARTIN (11/18/10)
	57		HOUSTON (11/30/10)
	62		NICHOLLS STATE (11/16/10)
FIELD GOALS MADE	13		CENTENARY (11/24/10)
	17		CENTRAL MICHIGAN (12/11/10)
FIELD GOAL ATTEMPTS	46		CENTENARY (11/24/10)
	48		CENTRAL MICHIGAN (12/11/10)
FIELD GOAL PERCENTAGE	.283	(13-46)	CENTENARY (11/24/10)
	.317	(19-60)	TENNESSEE-MARTIN (11/18/10)
3 PT FIELD GOALS MADE	3		CENTRAL MICHIGAN (12/11/10)
	4		TENNESSEE-MARTIN (11/18/10)
	4		CENTENARY (11/24/10)
3 PT FG ATTEMPTS	10		CENTRAL MICHIGAN (12/11/10)
	14		COASTAL CAROLINA (12/13/10)
3 PT FG PERCENTAGE	.222	(4-18)	TENNESSEE-MARTIN (11/18/10)
	.267	(4-15)	CENTENARY (11/24/10)
FREE THROWS MADE	5		HOUSTON (11/30/10)
	6		CENTENARY (11/24/10)
FREE THROW ATTEMPTS	10		CENTENARY (11/24/10)
	12		HOUSTON (11/30/10)
FREE THROW PERCENTAGE	.417	(5-12)	HOUSTON (11/30/10)
	.481	(13-27)	NORTHWESTERN STATE (11/12/10)
REBOUNDS	26		CENTENARY (11/24/10)
	29		at South Alabama (11/28/10)
	29		CENTRAL MICHIGAN (12/11/10)
ASSISTS	2		CENTRAL MICHIGAN (12/11/10)
	4		TENNESSEE-MARTIN (11/18/10)
STEALS	4		at South Alabama (11/28/10)
	5		CENTENARY (11/24/10)
BLOCKED SHOTS	2		NICHOLLS STATE (11/16/10)
	2		TENNESSEE-MARTIN (11/18/10)
	2		CENTRAL MICHIGAN (12/11/10)
TURNOVERS	8		NICHOLLS STATE (11/16/10)
	9		at South Alabama (11/28/10)
FOULS	16		CENTENARY (11/24/10)
	18		CENTRAL MICHIGAN (12/11/10)
	18		COASTAL CAROLINA (12/13/10)

**THE STAT CREW SYSTEM**  
**LSU Player High/Low Analysis (as of Dec 13, 2010)**  
**All games**

**LSU - INDIVIDUAL GAME HIGHS**

Points	21		STRINGER, Andre at South Alabama (11/28/10)
	21		STRINGER, Andre vs Northwestern State (11/12/10)
	21		TURNER, Ralston vs Northwestern State (11/12/10)
	17		TURNER, Ralston at South Alabama (11/28/10)
	17		DOTSON, Aaron vs Northwestern State (11/12/10)
Field Goals Made	7		STRINGER, Andre at South Alabama (11/28/10)
	6		STRINGER, Andre vs Coastal Carolina (12/13/10)
	6		WARREN, Storm vs Houston (11/30/10)
	6		TURNER, Ralston vs Houston (11/30/10)
	6		WHITE, Malcolm vs Centenary (11/24/10)
	6		WARREN, Storm vs Tennessee-Martin (11/18/10)
	6		TURNER, Ralston vs Northwestern State (11/12/10)
Field Goal Att.	16		TURNER, Ralston vs Coastal Carolina (12/13/10)
	15		STRINGER, Andre vs Coastal Carolina (12/13/10)
	13		STRINGER, Andre at South Alabama (11/28/10)
	13		WHITE, Malcolm vs Tennessee-Martin (11/18/10)
	13		STRINGER, Andre vs Nicholls State (11/16/10)
FG Pct (min 5 made)	1.000	(5-5)	DOTSON, Aaron vs Northwestern State (11/12/10)
	.857	(6-7)	WHITE, Malcolm vs Centenary (11/24/10)
	.714	(5-7)	TURNER, Ralston at South Alabama (11/28/10)
	.714	(5-7)	STRINGER, Andre vs Centenary (11/24/10)
	.667	(6-9)	WARREN, Storm vs Tennessee-Martin (11/18/10)
3-Point FG Made	4		STRINGER, Andre vs Coastal Carolina (12/13/10)
	4		STRINGER, Andre at South Alabama (11/28/10)
	4		DOTSON, Aaron at South Alabama (11/28/10)
	4		STRINGER, Andre vs Centenary (11/24/10)
	4		STRINGER, Andre vs Northwestern State (11/12/10)
3-Point FG Att.	9		TURNER, Ralston vs Coastal Carolina (12/13/10)
	9		STRINGER, Andre vs Northwestern State (11/12/10)
	8		STRINGER, Andre vs Coastal Carolina (12/13/10)
	8		STRINGER, Andre vs Nicholls State (11/16/10)
	7		STRINGER, Andre vs Tennessee-Martin (11/18/10)
	7		DERENBECKER, Matt vs Nicholls State (11/16/10)
3-Pt FG Pct (min 3 made)	.800	(4-5)	DOTSON, Aaron at South Alabama (11/28/10)
	.750	(3-4)	TURNER, Ralston vs Central Michigan (12/11/10)
	.667	(4-6)	STRINGER, Andre at South Alabama (11/28/10)
	.667	(4-6)	STRINGER, Andre vs Centenary (11/24/10)
	.500	(4-8)	STRINGER, Andre vs Coastal Carolina (12/13/10)
	.500	(3-6)	TURNER, Ralston vs Northwestern State (11/12/10)
Free Throws Made	11		STRINGER, Andre vs Houston (11/30/10)
	8		STRINGER, Andre vs Memphis (11/21/10)
	8		STRINGER, Andre vs Tennessee-Martin (11/18/10)
	7		STRINGER, Andre vs Northwestern State (11/12/10)
	7		DOTSON, Aaron vs Northwestern State (11/12/10)
Free Throw Att.	12		STRINGER, Andre vs Houston (11/30/10)
	11		STRINGER, Andre vs Memphis (11/21/10)
	11		WHITE, Malcolm vs Northwestern State (11/12/10)
	10		STRINGER, Andre vs Northwestern State (11/12/10)
	9		STRINGER, Andre vs Tennessee-Martin (11/18/10)
	9		TURNER, Ralston vs Northwestern State (11/12/10)
FT Pct (min 5 made)	1.000	(6-6)	STRINGER, Andre vs Central Michigan (12/11/10)
	.917	(11-12)	STRINGER, Andre vs Houston (11/30/10)
	.889	(8-9)	STRINGER, Andre vs Tennessee-Martin (11/18/10)

	.875	(7-8)	DOTSON, Aaron vs Northwestern State (11/12/10)
	.833	(5-6)	DOTSON, Aaron vs Central Michigan (12/11/10)
	.833	(5-6)	DOTSON, Aaron vs Tennessee-Martin (11/18/10)
	.833	(5-6)	LUDWIG, Eddie vs Tennessee-Martin (11/18/10)
Rebounds	15		WHITE, Malcolm vs Tennessee-Martin (11/18/10)
	14		WARREN, Storm vs Nicholls State (11/16/10)
	11		WARREN, Storm vs Houston (11/30/10)
	11		WARREN, Storm vs Tennessee-Martin (11/18/10)
	9		GREEN, Garrett vs Centenary (11/24/10)
Assists	5		STRINGER, Andre vs Coastal Carolina (12/13/10)
	5		TURNER, Ralston vs Houston (11/30/10)
	5		BASS, Chris vs Tennessee-Martin (11/18/10)
	5		STRINGER, Andre vs Northwestern State (11/12/10)
	4		BASS, Chris vs Central Michigan (12/11/10)
	4		TURNER, Ralston vs Central Michigan (12/11/10)
	4		BASS, Chris vs Houston (11/30/10)
	4		LUDWIG, Eddie at South Alabama (11/28/10)
	4		DOTSON, Aaron at South Alabama (11/28/10)
	4		STRINGER, Andre vs Centenary (11/24/10)
	4		DOTSON, Aaron vs Centenary (11/24/10)
	4		LUDWIG, Eddie vs Centenary (11/24/10)
	4		BASS, Chris vs Memphis (11/21/10)
	4		DOTSON, Aaron vs Memphis (11/21/10)
Steals	5		BASS, Chris vs Northwestern State (11/12/10)
	3		WARREN, Storm vs Houston (11/30/10)
	3		STRINGER, Andre vs Houston (11/30/10)
	3		GREEN, Garrett vs Centenary (11/24/10)
	3		STRINGER, Andre vs Tennessee-Martin (11/18/10)
	3		WARREN, Storm vs Nicholls State (11/16/10)
	3		LUDWIG, Eddie vs Northwestern State (11/12/10)
Blocked Shots	4		WARREN, Storm vs Houston (11/30/10)
	3		WARREN, Storm vs Centenary (11/24/10)
	3		WHITE, Malcolm vs Tennessee-Martin (11/18/10)
	3		WHITE, Malcolm vs Northwestern State (11/12/10)
	2		GREEN, Garrett vs Coastal Carolina (12/13/10)
	2		WHITE, Malcolm vs Central Michigan (12/11/10)
	2		WARREN, Storm vs Tennessee-Martin (11/18/10)
	2		DOTSON, Aaron vs Nicholls State (11/16/10)
Turnovers	6		STRINGER, Andre vs Central Michigan (12/11/10)
	6		TURNER, Ralston vs Houston (11/30/10)
	6		STRINGER, Andre vs Northwestern State (11/12/10)
	5		DOTSON, Aaron vs Coastal Carolina (12/13/10)
	5		BASS, Chris vs Northwestern State (11/12/10)
Fouls	5		DOTSON, Aaron at South Alabama (11/28/10)
	5		TURNER, Ralston at South Alabama (11/28/10)
	5		GREEN, Garrett vs Memphis (11/21/10)
	5		WHITE, Malcolm vs Memphis (11/21/10)
	5		WARREN, Storm vs Memphis (11/21/10)
	5		LUDWIG, Eddie vs Northwestern State (11/12/10)





# Game 9 - Coastal Carolina 78, LSU 69 (ot)

12/13/10 7 p.m. at Maravich Center (Baton Rouge, LA)

COASTAL	FG-A	3FG-A	FT-A	REB	PF	TP	A	TO	BLK	S	MIN
MCLAURIN, Sam f	1-2	0-0	0-0	7	4	2	1	3	0	2	20
GRAY, Chad f	7-12	4-5	4-6	7	1	22	0	4	2	1	37
NIEMAN, Danny g	1-5	0-1	6-6	4	2	8	4	1	0	1	37
HOLLOWAY, D. g	8-17	0-3	2-2	7	3	18	0	5	0	2	39
GREENWOOD, K. g	1-3	0-1	1-4	2	0	3	1	1	0	0	19
CRAWFORD, Brandon	1-2	0-0	0-0	2	3	2	0	1	1	0	15
RAFFA, Anthony	2-6	1-4	4-4	2	3	9	1	0	0	2	34
HOLMES, Mike	6-13	0-0	2-4	10	2	14	0	1	2	0	24
Team				4							
Totals	27-60	5-14	19-26	45	18	76	7	16	5	8	225

FG% 1st Half 12-29 41.4% 2nd half: 11-25 44.0% OT: 4-6 66.7% Game: 45.0% DB  
 3FG% 1st Half 1-4 25.0% 2nd half: 2-7 28.6% OT: 2-3 66.7 Game: 35.7% Reb  
 FT% 1st Half 5-10 50.0% 2nd half: 10-12 83.3% OT: 4-4 100.0 Game: 73.1% 3

LSU	FG-A	3FG-A	FT-A	REB	PF	TP	A	TO	BLK	S	MIN
WHITE, Malcolm f	2-3	0-0	1-4	3	4	5	0	1	0	0	19
WARREN, Storm f	4-6	0-0	0-0	5	3	8	0	3	0	1	22
STRINGER, Andre g	6-15	4-8	0-0	2	3	16	5	2	0	2	33
TURNER, Ralston g	5-16	1-9	4-4	6	4	15	1	3	0	1	35
DOTSON, Aaron g	2-8	1-3	4-6	5	2	9	3	5	1	0	37
GREEN, Garrett	4-6	0-0	1-3	4	1	9	0	0	2	0	20
BASS, Chris	2-2	0-0	0-0	0	2	4	1	1	0	0	14
LUDWIG, Eddie	0-0	0-0	0-0	1	0	0	0	0	0	1	11
COURTNEY, Jalen	0-0	0-0	0-0	0	0	0	0	0	0	0	1
HARRIS, Dennis	0-2	0-0	0-0	3	2	0	0	1	1	0	15
DERENBECKER, Matt	1-6	1-2	0-0	1	2	3	3	0	0	0	18
Team				5							
Totals	26-64	7-22	10-17	35	23	69	13	16	4	5	225

FG% 1st Half 14-25 56.0% 2nd half: 10-31 32.3% OT: 2-8 25.0% Game: 40.6% DB  
 3FG% 1st Half 2-6 33.3% 2nd half: 4-11 36.4% OT: 1-5 20.0% Game: 31.8% Reb  
 FT% 1st Half 5-7 71.4% 2nd half: 5-8 62.5% OT: 0-2 0.0% Game: 58.8% 2

Officials: Tony Greene, Anthony Jordan, Mike Nanc  
 Technical Fouls: Coastal -- None. LSU -- None.  
 Attendance: 6425

Coastal Carolina 30-34-14 -- 78  
 LSU 35-29- 5 -- 69