

## 5 Centenary College

November 24, 2010 \* 7 p.m.  
Baton Rouge, La. \* Pete Maravich Assembly Center

### LSU (2-2)

#### November

Fri. 12	NORTHWESTERN STATE	<b>W, 87-78</b>
Tues. 16	NICHOLLS STATE	L, 53-62
Thurs. 18	TENN-MARTIN (CST)	<b>W, 79-56</b>
Sun. 21	Memphis (at Tupelo, Miss.)(CBSCS)	L, 60-71
Wed. 24	CENTENARY	7 p.m.
Sun. 28	at South Alabama (CSS)	3 p.m.
Tues. 30	HOUSTON	7 p.m.

#### December

Sat. 11	CENTRAL MICHIGAN (CST)	7 p.m.
Mon. 13	COASTAL CAROLINA	7 p.m.
Thurs. 16	MCNEESE (CST)	7 p.m.
Sat. 18	WICHITA STATE (at Shreveport)	7 p.m.
Wed. 22	NORTH TEXAS (CST)	7 p.m.
Mon. 27	SOUTHERN (CST)	6 p.m.
Wed. 29	at Rice (CBSCS)	7 p.m.

#### January

Sun 2	at Virginia (FSN)	4:30 p.m.
Sat. 8	*at Auburn (FSN)	5 p.m.
Wed. 12	*ARKANSAS (SEC Network)	7 p.m.
Sat. 15	*at Kentucky (SEC Network)	3 p.m.
Sat. 22	*OLE MISS (SEC Network)	12:30 p.m.
Wed. 26	*at Tennessee (SEC Network)	7 p.m.
Sat. 29	*at Alabama (FSN)	7 p.m.

#### February

Wed. 2	*SOUTH CAROLINA (SEC Network)	7 p.m.
Sat. 5	*MISSISSIPPI STATE (SEC Network)	3 p.m.
Wed. 9	*at Ole Miss (CSS/CST)	8 p.m.
Sat. 12	*at Arkansas (SEC Network)	7 p.m.
Thurs. 17	*ALABAMA (ESPN/ESPN2)	8 p.m.
Sun. 20	*FLORIDA (ESPN/ESPN2)	Noon
Wed. 23	*at Mississippi State (CSS/CST)	8 p.m.
Sat. 26	*VANDERBILT (SEC Network)	12:30 p.m.

#### March

Wed. 2	*at Georgia (SEC Network)	7 p.m.
Sat. 5	*AUBURN (FSN)	6 p.m.
March 10-13 SEC Tournament (Atlanta, Ga.)		

### On the Air

#### Radio • LSU Sports Radio Network

Jim Hawthorne, play-by-play  
Kevin Ford, host/analyst

#### Television • None

### PROJECTED LSU LINEUP (BASED ON LAST GAME)

#### PG 10 Andre Stringer (5-9, Fr., Jackson, Miss.) 15.8 ppg, 2.3 rpg, 2.7 apg

Stringer got his first LSU start against UT-Martin (11/18) and in 32 minutes had his third straight double figure scoring game with 15 points ... Had 12 second half points to lead LSU in scoring against Memphis (11/21) ... Had 21 in the opener against Northwestern State (11/12) ... Long-range three-point shooter has hit 9 in first four contests.

#### G 22 Ralston Turner (6-6, Fr., Muscle Shoals, Ala.) 12.0 ppg, 2.5 rpg

Turner made his debut a good one, hitting 6-of-12 from the field, including three treys in NW St. (11/12) win ... Played 38 minutes in collegiate debut ... One of two freshmen on the LSU team (Andre Stringer) to score 21 in first game.

#### G 45 Aaron Dotson (6-4, So., Seattle Wash.) 11.8 ppg, 3.8 rpg, 1.7 apg

Dotson, now another season removed from his senior year high school knee injury, showed the talent and confidence Tiger fans were hoping for against NW St. (11/12), scoring 17 points ... Had a good 12 point effort vs. Memphis (11/21).

#### F 24 Storm Warren (6-7, Jr., Monroe, La.) 6.5 ppg, 8.0 rpg

Had one of the bigger rebound games of his career against Nicholls (11/16) with 14 boards ... Then had his 10th career double double against UTM (11/18) with 12 points and 11 rebounds ... Has started 35 consecutive games for LSU ... Struggled with foul trouble vs. Memphis (11/21), playing just 14 minutes with two points.

#### F 5 Malcolm White (6-9, Jr., Baton Rouge, La.) 7.8 ppg, 6.3 rpg, 2.0 bpg

White played his first game in over a year against NW St. (11/12) after transferring from Ole Miss ... Had three blocks and was in double figures (12) ... Had first college double double with 12 points 15 rebounds vs. UTM (11/18) ... 9 offensive rebounds in the contest ... Played just 17 minutes vs. Memphis (11/21) because of foul trouble.

### STORYLINES

- Tigers return home for only home game of the week as they host Centenary on Wednesday night.

- Tigers have one of the youngest teams in the league with no seniors and five players who logged their first LSU minutes in the season opener.

- All five starters were in double figures against UTM (11/18) ... That was the first time since a February 2009 game with Auburn.

- The numbers have lessened but opponents in four games have

- attempted 35 more shots than the Tigers with opponents making five more field goals (90) than LSU (85) ... A lot of those extra shots come from an opponent offensive rebound total of +9 and an LSU turnover margin of -16.

- \*LSU helped its cause on the offensive boards by grabbing 22 offensive rebounds, including nine by Malcolm White in the UT-Martin game (11/18)..

- Coach Trent Johnson enters the game with 199 wins in 350 games,

- one win shy of 200 career wins. He is in his 12th year as head coach, third at LSU, after serving time at Stanford and Nevada.

- Other numbers: LSU is one win shy of 1,400 wins in program history.

- This will be the 10th meeting between LSU and Centenary, which is in a transition from Division I to Division III with its athletic program ... LSU leads the series, 8-1. Teams last played in December 2008.

### BREAKDOWN

#### LSU

<b>Record</b>	2-2
<b>Ranking</b>	N/A
<b>Last Game</b>	November 21 in Tupelo, Miss. lost to Memphis, 70-61
<b>Head Coach</b>	Trent Johnson
<b>Career Record</b>	199-151/12th season
<b>LSU Record</b>	40-30/3rd season
<b>vs. Centenary:</b>	1-0

#### Centenary College

<b>Record</b>	0-5
<b>Ranking</b>	N/A
<b>Last Game</b>	November 22 in Shreveport lost to NW State, 83-70
<b>Head Coach</b>	Adam Walsh
<b>Career Record</b>	0-5/1st season
<b>CC Record</b>	0-5/1st season
<b>vs. LSU</b>	First Meeting

# Upcoming LSU Basketball Media Calendar

## 29

### MONDAY

**Media Session**  
2 p.m. - Media Room, LSU Practice Facility

### Practice

3 p.m. -- Practice Facility or Main PMAC Floor

## 30

### TUESDAY

Game No. 7  
Houston at LSU, 7 p.m. (Maravich Center), No TV. Radio: LSU Sports Radio Network (100.7 FM in Baton Rouge). Live audio and video online [LSUsports.net/live](http://LSUsports.net/live)

## 24

### WEDNESDAY

Game No. 5  
Centenary at LSU, 7 p.m. (Maravich Center) No TV. Radio: LSU Sports Radio Network (100.7 FM in Baton Rouge). Live audio online [LSUsports.net/live](http://LSUsports.net/live)

## 25

### THURSDAY

Happy Thanksgiving!

## 26

### FRIDAY

**Team Departs for Mobile**

## 27

### SATURDAY

**.Coors Classic Luncheon in Mobile featuring both coaches.**

## 28

### SUNDAY

Game No. 6  
LSU at South Alabama, 3 p.m. (Mitchell Center, Mobile, Ala.) TV: CSS Radio: LSU Sports Radio Network (100.7 FM in Baton Rouge).

## LSU Media Services

### Media Availability

Coach Trent Johnson is available in his office for early morning appointments and phone interviews. Please contact Basketball SID Kent Lowe (225-578-1864, [clowe@lsu.edu](mailto:clowe@lsu.edu)) at least 24 hours in advance.

### SEC Teleconference

The 12 SEC coaches are featured on a teleconference each Monday, January through March through the conference season. The conference starts at 10 a.m. (CST). Coach Johnson is on at 10:28 a.m. CST. To access the media only number contact Kent Lowe or the SEC Media Relations Office (205-458-3010).

### Media Sessions

Coach Johnson meets with the media two days prior to games, before practice at a time to be announced, in the practice facility meeting room. Some travel and scheduling issues may change the time and day so media should contact the Sports Information Office to confirm start time.

### The Trent Johnson Show

Presented by Capital One Bank

The weekly call-in show takes place Mondays (beginning in December) at 7 p.m. from T.J. Ribs on Acadian Thruway ... The show airs in Baton Rouge on local flagship New Country 100.7 FM The Tiger, on the Internet at [www.LSUsports.net](http://www.LSUsports.net) and on many LSU Sports Radio Network affiliates.

### Inside LSU Basketball

Coach Johnson's weekly TV show is on a state-wide network ... WBRZ-TV, Channel 2, airs the show at 10:35 p.m. Sundays beginning in mid-December. Television affiliates for the show are listed online at [LSUsports.net/tvaffiliates](http://LSUsports.net/tvaffiliates)

### Player Media Sessions

The players will be available at the media sessions that are normally conducted two days prior to the game. Please let Kent Lowe (225-578-1864, [clowe@lsu.edu](mailto:clowe@lsu.edu)) know which players you would like to have at the media session at least 24 hours in advance.

### Post Game

Coach Johnson will be in the media room of the practice facility after the game and the NCAA cooling off period ... Requested players will be brought to the practice facility media room as well. ... THE LSU DRESSING ROOM IS CLOSED ... To reach the media room, take the Northwest Corridor portal (where the LSU team enters the floor) ... When reaching the multi-purpose room and the glass doors, turn right ... Before reaching the steps, turn left and then take a right down the first hallway to the double wood doors and enter the media room. LSU marshalls will help direct you to the area ... The visiting coach has an interview area (where the pre-game meal is served) that he can use for his post-game media obligations if he wishes.

### WHO TO CONTACT

#### Sports Information Office

(225) 578-8226

**Michael Bonnette** - [mbonnet@lsu.edu](mailto:mbonnet@lsu.edu)

Assoc. AD/Sports Information Director

**C. Kent Lowe** - [clowe@lsu.edu](mailto:clowe@lsu.edu)

Sr. Assoc. Sports Information Director (Basketball Contact)

**Jake Terry** - [jterry9@lsu.edu](mailto:jterry9@lsu.edu)

Associate Sports Information Director (Social Media)

#### LSU Television

Kevin Wagner - [jwagne2@lsu.edu](mailto:jwagne2@lsu.edu)

#### LSU Radio

Jim Hawthorne - [lsuradio@lsu.edu](mailto:lsuradio@lsu.edu)

#### LSU Sports Information Mailing Address

P.O. Box 25095, Baton Rouge, LA 70894

### ON THE INTERNET

#### [www.LSUsports.net/media](http://www.LSUsports.net/media)

The Official Website of LSU Athletics is home to all the basketball information you need. Schedules, results, rosters, bios, statistics and game notes can be found and are always up to date.

#### <http://media.lsusports.net>

Media can access images for all LSU athletic teams, including action shots, heads shots, logos, etc. To gain access to the high-resolution pictures, email Michael Bonnette. You will be assigned a login and password that will enable you to retrieve pictures. This service is for the media use only.

#### [LSUsports.net/media](http://LSUsports.net/media)

Request credentials online, go to the men's basketball link.



### LSU Basketball on Twitter & Facebook

[facebook.com/lsubasketball](http://facebook.com/lsubasketball)  
[twitter.com/lsubasketball](http://twitter.com/lsubasketball)  
[twitter.com/lsucoachjohnson](http://twitter.com/lsucoachjohnson)  
[twitter.com/lsumediaalerts](http://twitter.com/lsumediaalerts)  
[LSUsports.net/connect](http://LSUsports.net/connect)

# Trent Johnson

Head Coach • 3rd year at LSU (12th year as head coach)

Trent Johnson believes the LSU basketball program is moving forward.

With an outstanding recruiting class of student-athletes that fit the LSU program, Johnson is anxious to see this group "be a team" in 2010-11.

As Johnson, the 20th head men's basketball coach at LSU enters his third season, he seeks to build on more than a decade of excellence at LSU, Stanford and Nevada. Having earned Conference Coach of the Year in all three leagues (WAC, Pac-10 and SEC), Johnson and his staff continue toward maintaining LSU basketball as one of the premier programs in the country.

In his first season at LSU, Johnson led the Tigers to 27 wins, tied for the third most wins in a season in LSU history, and won the SEC regular season championships with a record of 13-3. LSU returned to the NCAA Tournament for the first time since 2006, advancing to the second round before falling, 84-70, to North Carolina. In the opening round, LSU defeated nationally-ranked Butler.

Coach Johnson, who eats, sleeps and drinks college basketball year round, believes in both development on the court and also personal, social and academic development. As players grasp his vision for success, they have the opportunity to embrace playing in a face-paced system, executing in the half court and defending and rebounding at a high level.

Johnson has a record of success that continues here at LSU. His team will have to blend together and learn from a coach that is a fierce competitor who exudes and demands toughness.

His devotion to the team, his protective beliefs toward his players and his loyalty to his former players is evidenced by the fact that three of his former players are now members of the LSU basketball staff. Johnson is a program builder and he has re-established the base of the LSU program by visiting with former players and coaches to bring together the past, present and the future of the program.

Johnson also is charged with the development of athletes both on and off the court. Off the court, he is working hard to make sure student-athletes understand the "student" part of their days at LSU. At all three spots in his head coach-

ing career, he has developed not just successful athletes and winning basketball teams, but young men who are having success in life.

In his head coaching career, he has taken teams in seven of the last eight seasons to post-season play, including five NCAA appearances. In addition, Johnson has seen six of his former assistant coaches become head coaches at successful programs.

Johnson has been rewarded as the consensus SEC Coach of the Year and was a finalist for four national coach of the year honors as he became the first LSU men's basketball coach to win the league title and take the team to post-season play in his first year at the school.

Under Johnson's watch, he has already coached an SEC POY in Marvyn Thomas who now plays for the NO Hornets, Garrett Temple who is in his second year in the NBA with the San Antonio Spurs and Tasmir Mitchell, who finished his career as the third all-time leading scorer and sixth all-time rebounder in school history.

Thomas, Temple and Mitchell represent Johnson's ability to teach and mold a well-rounded basketball player into having both a good offensive and defensive presence that can benefit the team and provide a chance to play at the next level.

Johnson has always been a big believer in special causes and joined former LSU basketball coach Dale Brown and star center Shaquille O'Neal in cutting series of commercials that aired nationally for the "Be A Match" organization in support of bone marrow donors.

This past June, Johnson was part of a 10-day trip to Africa as part of the TRIAD Trust program that was established to stop the transmission of HIV through culturally relevant, locally sustainable health and life skills education-based programs in communities affected by HIV/AIDS.

He also is a member of the Board of Directors of the National Association of Basketball Coaches and has served on the NABC Special Committee on Recruiting and Access.

Johnson, who was born in Berkeley, Calif., and call Seattle, Wash., his home, is married to Jackie and they have two children: a daughter, Tinishia, 27, and a son, Terry, 24.



## The Johnson File

**NAME:** Trent Johnson  
**BIRTH DATE:** September 12, 1956  
**AGE:** 54  
**BIRTHPLACE:** Berkeley, Calif.  
**HOMETOWN:** Seattle, Wash.  
**WIFE:** Jackie  
**CHILDREN:** Tinishia (27), Terry (24)  
**COLLEGE:** BS, Boise State University, 1986

## PLAYING EXPERIENCE

**Boise State University (Boise, Idaho)**  
 Finished in the top 10 in career scoring and rebounding at the school ... In 1976, team advanced to NCAA Tournament after winning the Big Sky Tournament ... In his junior year, named the Most Improved Player and in his final season was named All-Big Sky.

## COACHING EXPERIENCE

**1986-89** - Assistant Coach, Utah  
**1989-92** - Assistant Coach, University of Washington  
**1992-96** - Assistant Coach, Rice.  
**1996-99** - Assistant Coach, Stanford  
**1999-04** - Head Coach, University of Nevada ... Compiled a 79-74 overall record ... 2003 team went to NIT, 2004 team won WAC Tourney and advanced to the NCAA Sweet 16.  
**2004-08** - Head Coach, Stanford ... Four year record of 80-47 ... Team advanced to post-season play each of his four years, 2008 team won 28 games and advanced to the NCAA Sweet 16.  
**April 10, 2008** -- Named the 20th Head Basketball Coach at LSU.  
**2008-09** -- LSU wins the SEC title with 13-3 record, finishes 27-8 and advances to the second round of NCAA Tournament to push mark to seven straight years of coaching teams to post-season play.

## LEAGUE COACH OF THE YEAR HONORS

**2003** -- Western Athletic Conference  
**2008** -- Pac-10  
**2009** -- Southeastern Conference

## The Trent Johnson Record

YEAR	SCHOOL	/---OVERALL---/		/---CONF.---/		FINISH
		W-L	PCT.	W-L	PCT.	
1999-00	Nevada	9-20	.310	6-10	.375	3rd-Big West
2000-01	Nevada	10-18	.357	3-13	.187	9th-WAC
2001-02	Nevada	17-13	.567	9-9	.500	5th-WAC
2002-03	Nevada	18-14	.562	11-7	.611	4th-WAC/NIT First Round
2003-04	Nevada	25-9	.735	13-5	.722	1st WAC/Tourney Champ; NCAA Sweet 16
2004-05	Stanford	18-13	.581	11-7	.611	4th-Pac 10/NCAA First Round
2005-06	Stanford	16-14	.533	11-7	.611	5th-Pac 10/NIT Second Round
2006-07	Stanford	18-13	.581	10-8	.555	6th-Pac 10/NCAA First Round
2007-08	Stanford	28-7	.800	13-5	.722	2nd-Pac10/NCAA Sweet 16
<b>2008-09</b>	<b>LSU</b>	<b>27-8</b>	<b>.771</b>	<b>13-3</b>	<b>.812</b>	<b>1st-West, SEC Champs, NCAA 2nd rd.</b>
<b>2009-10</b>	<b>LSU</b>	<b>11-20</b>	<b>.354</b>	<b>2-14</b>	<b>.125</b>	<b>6th-West</b>
<b>2010-11</b>	<b>LSU</b>	<b>2-2</b>	<b>.500</b>			
<b>Totals</b>	<b>11 Years</b>	<b>199-151</b>	<b>.568</b>	<b>102-88</b>	<b>.536</b>	<b>7 tournaments, 2 NCAA Sweet 16</b>
<b>Nevada</b>	<b>5 Years</b>	<b>79-74</b>	<b>.516</b>	<b>42-44</b>	<b>.488</b>	<b>1 WAC title, 1 NCAA Sweet 16</b>
<b>Stanford</b>	<b>4 Years</b>	<b>80-47</b>	<b>.630</b>	<b>45-27</b>	<b>.625</b>	<b>4 tournaments, 1 NCAA Sweet 16</b>
<b>LSU</b>	<b>2 Years</b>	<b>40-30</b>	<b>.571</b>	<b>15-17</b>	<b>.469</b>	<b>1 SEC Title, 1 NCAA 2nd Rd.</b>

## CAREER SPECIALTY NUMBERS

### CAREER DOUBLE-FIGURE GAMES

Storm Warren 22  
 Aaron Dotson 6  
 Dennis Harris 5  
 Andre Stringer 4  
 Ralston Turner 3  
 Malcolm White 2  
 Matt Derenbecker 1

### CAREER DOUBLE-FIGURE REBOUNDS

Storm Warren 11

### CAREER DOUBLE-DOUBLES

Storm Warren 10  
 Storm Warren 1

### CAREER THREE-POINTERS

Chris Bass 10  
 Aaron Dotson 10  
 Andre Stringer 8  
 Ralston Turner 7  
 Dennis Harris 5  
 Daron Populist 5  
 Garrett Green 3  
 Matt Derenbecker 3

### CAREER ASSISTS

Chris Bass 151  
 Aaron Dotson 36  
 Storm Warren 22  
 Eddie Ludwig 20  
 Dennis Harris 14  
 Garrett Green 13  
 Daron Populist 12  
 Andre Stringer 11  
 Ralston Turner 5  
 Malcolm White 2  
 Matt Derenbecker 1

### CAREER BLOCKS

Storm Warren 62  
 Garrett Green 16  
 Aaron Dotson 15  
 Dennis Harris 14  
 Malcolm White 8  
 Chris Bass 7  
 Eddie Ludwig 3  
 Ralston Turner 1

### CAREER STEALS

Storm Warren 53  
 Chris Bass 34  
 Eddie Ludwig 18  
 Aaron Dotson 16  
 Garrett Green 15  
 Dennis Harris 8  
 Andre Stringer 4  
 Ralston Turner 3  
 Daron Populist 1

# 2010-11 LSU Men's Basketball Roster

NO.	NAME	CL.	POS.	HT.	WT.	EXP.	HOMETOWN/LAST SCHOOL
3	Garrett Green	Jr.	F	6-11	230	2VL	Woodland Hills, Calif/Taft HS
4	Chris Bass	Jr.	G	6-1	185	2VL	Baton Rouge, La./Lee Academy (Ma.)
5	Malcolm White	Jr.	F	6-9	225	RS	Baton Rouge, La./Ole Miss
10	Andre Stringer	Fr.	G	5-9	170	HS	Jackson, Miss./Forest Hill
13	Eddie Ludwig	So.	F	6-9	215	1L	Metairie, La./Metairie Park Country Day
14	Jalen Courtney	Fr.	F	6-8	210	HS	Jackson, Miss./Provine HS
15	Dennis Harris	So.	F	6-11	190	1L	Jonesboro, Ga./Mundy's Mill HS
21	Matt Derenbecker	Fr.	F	6-7	185	HS	Metairie, La./Metairie Park Country Day
22	Ralston Turner	Fr.	G	6-6	193	HS	Muscle Shoals, Ala./Muscle Shoals HS
24	Storm Warren	Jr.	F	6-7	230	2L	Monroe, La./Richwood HS
25	Daron Populist	So.	G	5-10	170	1L	Slidell, La./Salmen HS
41**	Justin Hamilton	Jr.	C	6-11	260	TR	Alpine, Utah/Iowa State
45	Aaron Dotson	So.	G	6-4	205	1L	Seattle, Wash./Rainier Beach HS
55	Andrew Del Piero	So.	C	7-2	286	RS	Austin, Texas/Westlake HS

\*\*redshirt in 2010-11 after transferring from Iowa State

**Head Coach:** Trent Johnson (Boise State, '86), 3rd year at LSU

**Assistant Coach:** Donny Guerinoni (Nevada, '01), 3rd year at LSU

**Assistant Coach:** Lynn Nance (Washington, '65), 1st year at LSU

**Assistant Coach:** Brent Scott (Rice, '03), 3rd year at LSU

**Director of Basketball Operations:** Nick Robinson (Stanford, '05), 2nd year at LSU

**Executive Asst. to Head Coach:** Brittany Carvalhido (Oklahoma State, '05), 1st year LSU men, 3rd year at LSU

## Transactions

Center Andrew Del Piero was redshirted prior to the beginning of the season ... Dennis Harris sprained his left ankle prior to the start of the season ... Missed first four games, and is listed as day-to-day entering the week.

## The Numbers Game

Here are some of the important numbers with the LSU basketball program:

**103** - This is the start of the 103rd season of basketball at LSU.

**29-4** - LSU record in Trent Johnson era when scoring at least 70 points.

**1** -- One loss in Trent Johnson era when LSU scores at least 80 points (Aub, 1/20)

**10** -- Number of career double doubles by Storm Warren (one this season)

**1999** -- Last time a freshman scored at least 21 points in a season opener for LSU (Ralston Turner and Andre Stringer -- 2010-11; Ronald Dupree vs. Grambling in opening game of 1999-00 season.)

**8-0** -- Record when LSU shoots 50 percent or better in the Trent Johnson era

**7** -- Number of times LSU has won when outrebounded in Trent Johnson era (7-18 record)

**31-11** -- Record when LSU out rebounds opponent, but two losses this year (Nicholls, Memphis).

**36-5** -- Record when LSU out shoot opponents.

**6** -- Number of SEC titles LSU has won since 1980 (second most in SEC)

**3** - Number of SEC Championships won or shared since 2000 (2000, 2006, 2009)

**10** -- Number of SEC championships LSU has won, second most in league.

## Last Game - Memphis 70, LSU 61 (Nov. 21 -- Tupelo, Miss.)

LSU kept 19th-ranked Memphis on the ropes most of the game in what proved to be a road "neutral" court game Sunday at the BancorpSouth Arena in Tupelo, Miss. The Tigers shot 42.9 percent in the opening half, including 3-of-6 treys, as Aaron Dotson scored 12 points and Garrett Green took over with starters in foul trouble and had a career high eight markers ... LSU came from eight down with under 10 minutes to go in the first half to take its first lead at 24-23 with 4:31 to play in the half on an Eddie Ludwig layup ... A four-point play (three-pointer and free throw) by Aaron Dotson in the final 1:31 of the half had LSU up three, 31-28, and a free throw by Andre Stringer with 24 seconds left put LSU up, 34-33, at the intermission.

LSU's shooting did not remain constant in the second half and five of LSU's six second half turnovers came early as Memphis went on a 16-6 run to take a 49-40 lead with 10:56 to go in the game ... But the Tigers fought back to gradually whittle the lead down and take the lead at 57-56 on a Stringer layup with 4:48 to play (LSU's last FG of the game). But Memphis closed the game on a 14-4 run for the final margin ... LSU, with some good looks, shot just 25 percent in the second half (6-24) and three post players - Malcolm White, Storm Warren, Green - all fouled out .

Stringer led LSU in scoring for the fourth straight game with 13 points, while Dotson had 12 and Ralston Turner 11 as the guards combined for 36 of LSU's 61 points.

## Numbers From the Game

For the fourth straight game LSU lowered its turnover number, this time to 13 ... LSU was only able to convert Memphis' 16 turnovers into four points, while Memphis had 15 points off LSU's 13 turnovers ... The Tigers continue to get to the line and make a good percentage, making 20-of-29 against Memphis ... LSU out rebounded the opponent for the third time in four games this year, 35-33, but lost for the second time this year when having more rebounds.

## About Centenary, The Series

What was known for many years as the smallest Division I basketball school in the nation, the Gents are playing their final year in The Summit League as they make the transition from Division I to Division III in athletics ... The Gents will move to the American Southwest Conference next year where Louisiana College is also a member ... But to this season ... The Gents have struggled so far this season with an 0-5 record with losses to Memphis, UT-Martin, Arkansas-Monticello, Tulane and Northwestern State ... Monday's game in Shreveport against the Demons, was Centenary's best performance of the year as they shot 60 percent in the first half to build a 38-30 advantage at the break ... But the Demons shot 64.3 percent in the second half and despite the Gents making 55.1 percent for the game (27-of-49), Northwestern State put up 52 points to win the game, 83-70.

Maxx Nakwaasah led the Gents with 19 points, while Logan Lowery had 15 and Leo Davis 12 ... Northwestern State had a 32-31 rebound edge, but Centenary turned it over 26 times and the Demons scored 32 points off turnovers ... Adam Walsh was named the Gents head coach in May of this year after serving on the staff as an assistant coach.

The game will serve as the final game LSU will play as part of the Global Sports Challenge that included the games at home with Northwestern State and UT-Martin and last Sunday's game in Tupelo with Memphis.

## Season 40 At The PMAC

It was the 1971-72 season that the first game was played in the then LSU Assembly Center, although the Tigers had to open on the road for the first five games before returning home to open the building on Jan. 3, 1972 against Vanderbilt, an 80-73 loss. The Tigers got their first win in the building on Jan. 6, 1972 against Georgetown, 90-71.

Last year, LSU was 11-7 in the Maravich Center, 9-1 in non-conference games ... LSU is 2-1 this season and 455-155 (74.6) all-time in the building and 242-34 in non-conference games (.876) ... Trent Johnson is 23-3 in home non-conference games.

## Success At Home

The PMAC has proved to be a difficult place to play as since the start of the 2002-03 season, LSU has won 110 games, an average of 13.6 wins per year. LSU's win total is second only to Florida in the same time period (through play on Monday):

Florida 124

### LSU 111

Kentucky 102

Vanderbilt 102

Tennessee 102

Alabama 96

Arkansas 93

Mississippi State 90

South Carolina 86

Auburn 85

Ole Miss 84

Georgia 79

## On The Road

Between home and neutral courts a year ago, LSU was 0-13, compared to the championship year of 2009 when LSU was 8-6, including 6-3 in SEC play ... LSU's last "neutral" court win was its first round NCAA win over Butler in March 2009 ... LSU's last win on a team's home court was at Kentucky on Feb. 28, 2009.

## Shooting The Round Ball On Opening Night

The Tigers shot the ball consistently and well when they were able to get the ball into the offense, shooting 60 percent for the night against the Demons (24-of-40) ... LSU was 13-of-22 in the first half for 59.1 percent and 11-of-18 (61.1 percent) in the second 20 minutes ... It marks the first time LSU shot 60 percent from the field since shooting 63.6 percent (35-55) against Grambling State on Dec. 13, 2008 ... It was the eighth time in the Trent Johnson era that LSU has shot 50 percent or better in a game and LSU is 8-0 in those contests.

## CAREER DOUBLE-DOUBLES

### STORM WARREN (10)

Game	Date	Pts	Reb
Alcorn State	11/20/08	11	11
ULM	11/13/09	15	12
Indiana State	11/16/09	14	12
Western Ky.	11/17/09	20	11
UL-Laf.	12/1/09	18	16
N'wesern st.	12/12/09	21	16
SE Louisiana	12/14/09	14	12
Nicholls	12/17/09	13	11
Auburn	1/20/10	17	11
UT-Martin	11/18/10	12	11

### LSU Scoring Runs

5-0	8
6-0	4
7-0	5
8-0	1
9-0	1
10-0	
11-0	1 (UTM)
12-0	
13-0	
14-0	
15-0	

### Opp. Scoring Runs

5-0	6
6-0	3
7-0	3
8-0	3
9-0	1
10-0	
11-0	
12-0	
13-0	
14-0	
15-0	

## COMPARING THE STATISTICS

Overall	LSU	CC
Scoring Average	70.0	54.4
Opp. Scoring Average	66.5	85.0
Scoring Margin	+3.5	-30.6
FG Percentage	43.1	36.7
Opp. FG Percentage	38.8	49.6
3 PT FG Pct.	33.3	25.6
Opp. 3 PT FG Pct.	29.3	36.8
3FGs per Game	5.3	4.6
FT Percentage	71.2	56.3
Opp. FT Percentage	59.6	70.3
FT Made Per Game	22.3	13.4
Rebound Avg.	39.2	32.4
Opp. Rebound Avg.	33.5	39.8
Rebound Margin	+5.8	-7.4
Assists Average	11.3	11.2
TO Average	17.8	21.0
Blocks Average	4.3	2.4
Steals Average	7.5	6.0

The Tigers were 7-of-15 from the arc and 32-of-46 from the free throw line ... The 32 free throw makes was tied for the seventh most free throw makes at LSU and just nine away from the school record of 41 ... The most free throws made LSU had a year ago in a game was 20.

### The Free Throws Cometh

LSU is averaging 31 free throw attempts through the first four games, a number that if it would continue would put LSU near an all-time record for attempts by season's end ... But of LSU's 125 attempts, LSU has made 89 or 71.2 percent. LSU is averaging 22.3 makes a game, on pace to top the mark of 667 made by the 1969-70 team when free throws were shot on every foul. Only one other team, the 1980-81 squad, had over 600 free throw makes at LSU. It should be remembered they were helped by the fact they played a school record 31 games.

Four players are averaging over 76 percent at the line early on – Eddie Ludwig (92.9%, 13-14); Andre Stringer (78.8%, 26-33); Ralston Turner (76.5%, 13-17); Aaron Dotson (76.0%, 19-25).

LSU is fifth in the league in free throw percentage as a team and Ludwig is fourth.

### Healthy Aaron Dotson

The LSU fans have gotten to see the Aaron Dotson that they have been hoping to see ever since he was signed out of Rainier Beach HS in Seattle ... But a high school senior knee injury that caused him to miss the majority of his senior year at Rainier, shook his confidence as a college freshman ... It has been obvious to coaches in practices and scrimmages this was a different player this year and it showed in the opener against Northwestern State ... Dotson hit 5-of-5 field goals (one of only two players in the SEC to be perfect from the field on opening night) and scored 17 points in 27 minutes of play ... Against UT-Martin, Dotson hit 4-of-8 field goal attempts and 5-of-6 at the line to get 13 points and six rebounds in 19 minutes ... Against Memphis (11/21), Dotson scored 12 points and had one of the rare four-point plays with a long three-pointer and a free throw ... So far, Dotson is 13-of-22 from the field and 2-of-4 outside the arc, averaging 11.8 points per game and 3.8 rebounds.

### Bass Turning Assist Numbers

In the last two games, Chris Bass has gotten the assist-to-turnover numbers started back the right way after struggling with turnovers in the first two games ... After having just two assists in the first two games, Bass had five against UT-Martin and four against Memphis to raise his early season total of to 11 and put him on the positive side with 11 assists and seven turnovers.

### The Freshmen

The Tigers had all four freshmen on the floor in the opener with Northwestern State, one as a starter in Ralston Turner, while Andre Stringer, Jalen Courtney and Matt Derenbecker came off the bench ... Turner played 38 minutes, scoring 21 points with five rebounds, two assists and two steals ... Turner was one of three players on opening night in the league to play 38 minutes ... Stringer came off the bench to play 25 minutes at point guard, also scoring 21 points ... Both Turner and Stringer hit half their field goal attempts (Turner 6-of-12, Stringer 5-of-10) ... The two of them combined to make all of LSU's seven three-pointers.

Courtney scored two points in three minutes, while Derenbecker played six minutes.

Against Nicholls, it was two freshmen leading LSU in scoring again as Stringer and Derenbecker each hit three treys in 14-point performances ... Stringer had three assists and no turnovers in 31 minutes, while Derenbecker logged 28 minutes ... So far in two games, Stringer has hit seven of LSU's 13 team three-point field goals.

It was same song third verse as freshman Stringer, in his first starting assignment for the Tigers, led the scoring with 15 points in 32 minutes ... In fact, he has led the team in scoring in all four games with 13 points ... He is the only player in double figures for all four games ... Turner and Dotson are the only other players in double figures three of the four games.

Freshman players on the LSU team have accounted for 47 percent of LSU's scoring.

### A High School Correction

Since we are in Mississippi, we must make note that there is a mistake in the written media guide publications on the high school of LSU's Andre Stringer ... He is actually from Forest HILL High School in Jackson, Miss., not Forest Park as appears in the guide ... He is one of two players from Jackson as Jalen Courtney came to LSU from Provine High.

### Warren On The Boards

The junior from Monroe was the last player (before Malcolm White on Thursday) to get nine offensive rebounds (against Northwestern State a year ago) and 10 defensive rebounds (Nicholls State, 11/16) after his 14 rebound performance Tuesday ... He was just two off his career high of 16 and it was his third best of his career after the two 16-rebound performances

in late 2009 in back-to-back games against Northwestern State and Louisiana Lafayette ... Warren, who was seventh in the league a year ago in rebounding, is averaging 8.0 rebounds.

Warren had his first double double (11/18) (12 pts-11 reb) to give him 10 for his career (1 as a freshman, 9 as a sophomore, 1 as a junior).

#### Malcolm White

White became the 38th player in LSU history to grab at least 15 rebounds in a game, hitting that number against UTM (11/18) in recording his first collegiate double double ... White, who played at Ole Miss for two seasons, before transferring and sitting out last year under NCAA transfer rules, had 12 points, 15 rebounds and three blocks in 31 minutes.

#### Seven Former Tigers Were On NBA Opening Day Rosters; Six Playing

When the NBA season got underway, there were seven former LSU players on rosters. That number is now six as on last week the San Antonio Spurs waived Garrett Temple. Here are the six players and the teams they play on;

**Brandon Bass, Orlando Magic – 2nd season with Orlando, sixth in NBA**

**Glen Davis, Boston Celtics – 4th season with Boston**

**Shaquille O’Neal, Boston Celtics – 1st season with Boston, 19th in the NBA**

**Anthony Randolph, New York Knicks – 1st season with Knicks, 3rd in the NBA**

**Tyrus Thomas, Charlotte Bobcats – 1st full season with Charlotte, fifth in NBA**

**Marcus Thornton, New Orleans Hornets – 2nd season with Hornets**

The NBA D-League play is underway and former LSU point guard Randy Livingston will begin his first season as the head coach of the Idaho Stampede. Rookie Tasmin Mitchell will be playing for the Erie Bayhawks, while Darnell Lazare will be on the roster of the Maine Red Claws. Lazare was a member of the 2006 Final Four team. Terry Martin, a senior on the 2009 SEC championship team, is listed as a tryout roster member of the Utah Flash. Austin is the Spurs D-League team and Temple was not sent to Austin, so we will update his status as news warrants.

#### LSU Adds Two Important Signees During Early Signing Period

Coach Trent Johnson announced on Wednesday that the LSU athletics department had received and approved two National Letters of Intent from players for the 2011-12 men’s basketball season.

The players are John Isaac, a 6-4, 215-pound guard from New Llano, La., who attends Pickering High School; and, Johnny O’Bryant, a 6-9, 245-pound power forward from Cleveland, Miss., and East HS.

“It is a good day for Tiger basketball,” said Coach Johnson. “Obviously, these are two quality young men who happen to be very, very good basketball players. They fit into the direction in which our program is headed, and that means playing elite level college basketball.”

Isaac missed all of last season with a torn left ACL, but as a sophomore he averaged a double double with 18.5 points and 11.5 rebounds. He shot 59 percent from the field and averaged 8.6 assists and 1.8 steals. He was First-Team All-District that year in his fourth season of varsity competition for Pickering. He has been a starter on the Pickering varsity since the seventh grade.

O’Bryant is the nation’s No. 6 ranked power forward by ESPN (21st overall in the country) and the No. 8 power forward and nation’s 38th player overall according to Rivals.com.

He averaged 15 points and 7.2 rebounds last season as a junior as East reached the Class 3A semifinals. Two years ago, O’Bryant was a member of the USA Basketball U16 team that captured gold in Mendoza, Argentina at the FIBA Americas Championship and followed that up with another gold medal in Hamburg, Germany with the U17 national team.

#### Tigers Invited to 2011 Charleston Classic

The LSU men’s basketball team will be part of the eight-team field for the 2011 Charleston Classic to be contested Nov. 17, 18 and 20, 2011 at Carolina First Arena in Charleston, S.C.

The field for the fourth annual tournament in addition to the Tigers includes Georgia Tech, Saint Joseph’s, Seton Hall, Tulsa, Virginia Commonwealth, Western Kentucky and Baylor.

The 2011 Charleston Classic, a bracket-format tournament, will feature 12 games over the three days. Each team will compete in one game per day, advancing through a bracket-tournament format. The two teams that remain undefeated throughout will face off in a championship match Sunday, Nov. 20, 2011.

This family-friendly tournament offers the teams a week of practice, play and experiences in-and-around historic Charleston. Addition information, including travel packages, can be found on the Charleston Classic Web site at [www.charlestonclassic.com](http://www.charlestonclassic.com)

The Charleston Classic is owned and operated by ESPN Regional Television, Inc. (ERT), a

TIGER TRENDS		
LSU RECORD...	10-11	COACH JERA
In November	2-2	10-4
In December		11-3
In January		7-11
In February		9-7
In March		3-5
In April		
<b>LSU vs. AP Ranked Opponents</b>		
At home		0-4
On the road		0-1
Neutral	0-1	1-3
<b>LSU's Record in Games...</b>		
Decided by 5 pts or less		9-5
Decided by 10 pts or less	1-2	16-16
Decided by 11 pts or more	1-0	24-14
At night	2-1	29-16
During the day	0-1	11-14
Decided in Overtime		1-1
Televised	1-1	20-27
<b>LSU's Record When Scoring...</b>		
Less than 60 points	0-1	2-19
60-69 points	0-1	9-7
70-79 points	1-0	14-3
80-89 points	1-0	11-1
90-99 points		4-0
100 or more points		
<b>LSU's Record When Allowing...</b>		
Less than 60 points	1-0	15-3
60-69 points	0-1	17-9
70-79 points	1-1	7-10
80-89 points		0-7
90-99 points		1-1
100 or more points		
<b>LSU's Record When...</b>		
Leading at the half	2-2	30-10
Losing at the half		7-21
Tied at the half		3-2
Lead 10 minutes left	2-0	34-3
Losing 10 minutes left	0-2	4-26
Tied 10 minutes left		2-1
Lead 5 minutes left	2-0	35-1
Losing 5 minutes left	0-2	4-29
Tied 5 minutes left		1-0
<b>LSU's Record When Shooting...</b>		
50% or higher	1-0	8-0
Less than 50%	1-2	32-30
Better than opponent	2-1	36-5
Worse than opponent	0-1	4-25
Even Shooting		
More 3PT FGs than opp.		16-4
<b>LSU's Record When...</b>		
Outrebounding opp.	1-2	31-11
Outrebounded by opp.	1-0	7-18
Equal rebounds		2-1
<b>LSU's Record When Committing...</b>		
Fewer TO than opp.	0-1	23-12
More TO than opp.	2-1	13-15
Equal TO		4-3
15 or fewer TO	1-1	27-24

## TRENT JOHNSON ERA INDIVIDUAL SUPERLATIVES

### Points

1. 41 Tasmin Mitchell - at Miss. St. (2-11-09)
2. 38 Tasmin Mitchell - vs. Aub. (1-20-10)
3. 33 Marcus Thornton - vs. SE La (1-3-09)
4. 32 Marcus Thornton - vs. Fla. (2-24-09)
5. 31 Marcus Thornton - vs. Miss. St. (1-21-09)
6. 30 Marcus Thornton - 3 times
6. 30 Tasmin Mitchell - vs. SC (1-14-09)

### FG Made

1. 15 Tasmin Mitchell - vs. Aub (1-20-10)
2. 12 Tasmin Mitchell - at Miss. St. (2-11-09)
2. 12 Tasmin Mitchell - at Georgia (2-4-09)
4. 11 Tasmin Mitchell - vs. Nicholls (12-17-09)
4. 11 Marcus Thornton - at Georgia (2-4-09)
4. 11 Marcus Thornton - at SE La. (1-3-09)
4. 11 Marcus Thornton - vs. UL-Laf (12-31-08)

### 3FG Made

1. 6 Marcus Thornton - vs. Florida (2/24/09)
2. 5 Marcus Thornton - twice
2. 5 Bo Spencer - twice
6. 4 Andre Stringer - vs. NW State (11/12/10)
6. 4 Bo Spencer - eight times
6. 4. Garrett Temple
6. 4 Marcus Thornton - three times
6. 4 Terry Martin
6. 4 Tasmin Mitchell - twice

### FT Made

1. 15 - Tasmin Mitchell - vs. Miss. St (2-11-09)
2. 12 - Marcus Thornton - AUburn (2-21-09)
3. 11 - Tasmin Mitchell - NW State (12-12-09)
4. 10 - Marcus Thornton - Florida (2-24-09)
4. 10 - Tasmin Mitchell twice

### Rebounds

1. 18 Tasmin Mitchell - vs. SE La. (12-14-09)
2. 17 Tasmin Mitchell - vs. Tennessee (2-4-10)
3. 16 Storm Warren - vs. NW State (12/12/09)
3. 16 Storm Warren - vs. UL-Laf (12-1-09)
5. 15 Malcolm White - vs. UT-Martin (11/18/10)
5. 15 Tasmin Mitchell - Cal St Full (12/2/08)

### Assists

1. 9 Garrett Temple - vs. Ole Miss (2/14/09)
1. 9 Garrett Temple - vs. Ole Miss (1/17/09)
3. 7 Garrett Temple - vs. Cal St Full (12/2/08)
4. 6 Bo Spencer - vs. Florida (2/24/09)
4. 6 Garrett Temple - 4 times
4. 6 Chris Bass - 4 times

### Blocks

1. 7 Chris Johnson - vs. Arkansas (1/31/09)
2. 6 Chris Johnson - twice
4. 5 Chris Johnson - Nicholls State (12/17/08)
5. 4 Chris Johnson - 10 times

### Steals

1. 7 Marcus Thornton - vs. Arkansas (2/18/09)
2. 6 Tasmin Mitchell - vs. UL-Laf (12/31/08)
2. 6 Garrett Temple - twice
5. 5 Tasmin Mitchell - vs. Kentucky (2/28/09)
5. 5 Garrett Temple - vs. Xavier (1/24/09)
5. 5 Bo Spencer - vs. S. Carolina (1/14/09)
5. 5 Storm Warren - vs. Arkansas (2/24/10)
5. 5 Chris Bass - NW State (11/12/10)

subsidiary of ESPN.

### Next Up - Tigers Headed To Mobile, Ala. For Coors Classic

LSU will leave Baton Rouge on Friday afternoon for Mobile, Ala., to take part in the Coors Classic Basketball Game presented by the GoDaddy.com Bowl. LSU and South Alabama will meet at the Mitchell Center on the USA campus at 3 p.m. Sunday in a game to be televised by CSS (the game will not be seen on CST due to Hornets and LSU replay conflict) ... This will be the second time the two teams will meet ... LSU concludes the pre-final exams portion of its schedule on Tuesday, Nov. 30 against Houston at 7 p.m. Tickets for that game are available online at LSUtix.net.



## SCORING BREAKDOWN

CLASS	PTS	PCT.
Freshmen	132	47.1
Sophomores	70	25.0
Juniors	78	27.8
SCORING	PTS	PCT.
Starters	184	65.7
Bench	96	34.3
POINTS IN PAINT	PTS	APG
LSU	104	26.0
Opponents	88	22.0
POINTS OFF TO	PTS	APG
LSU	50	12.5
Opponents	74	18.5
BENCH SCORING	PTS	APG
LSU	78	26.0
Opponents	94	31.3
FT% LAST 5 MINUTES		PCT
LSU	14-24	58.3
Opponents	27-42	64.3
FG% LAST 5 MINUTES		PCT
LSU	13-27	48.1
Opponents	17-30	56.7
3FG% LAST 5 MINUTES		PCT
LSU	2-11	18.2
Opp.	4-9	44.4

### W-L RECORDS OF STARTING LINEUPS (G, G, F, F, F or G,G,G,F,F)

1-1 -- Bass, Turner, Dotson, White, Warren

1-1 -- Stringer, Turner, Dotson, White, Warren

LEADING SCORERS -- Turner 1, Stringer 4, Derenbecker 1

LEADING REBOUNDERS -- Green 1, Warren 1, White 1, Ludwig 1

LEADING ASSISTS -- Stringer 2, Bass 2, Dotson 1

TOTAL DUNKS -- White 2, Courtney 1, Dotson 2, Bass 1, Warren 1, Turner 1, Green 1

DOUBLE FIGURE SCORING GAMES -- Turner 2, Stringer 4, White 1, Dotson 2, Derenebecker 1

DOUBLE DOUBLE -- Warren 1

### PLAYERS SCORING IN DOUBLE FIGURES BY GAME

0	1	2	3	4	5 or more
		1	1	1	1



# Garrett Green

Forward \* 6-11 \* 230 \* Junior \* 2L \* Woodland Hills, Calif. (Taft HS)

# 3

### Top Performances

**Points**  
 Season: 8, vs. Memphis, 11/21/10  
 Career: 8, vs. Memphis, 11/21/10

**Rebounds**  
 Season: 6, vs. NW St., 11/12/10  
 Career: 8, vs. Southern, 11/30/07

**Field Goals Made**  
 Season: 4, vs. Memphis, 11/21/10  
 Career: 4, vs. Memphis, 11/21/10

**3 PT FG Made**  
 Season  
 Career: 1, three times

**Free Throws Made**  
 Season: 1, vs. UT-Martin, 11/18/10  
 Career: 1, 11 times

**Assists**  
 Season: 1, vs. Nicholls, 11/16/10  
 Career: 3, at Florida, 1/16/10

**Blocks**  
 Season: 1, vs. Memphis, 11/21/10  
 Career: 2, twice

**Steals**  
 Season: 1, twice  
 Career: 3, vs. Arkansas, 2/24/10

**Minutes Played**  
 Season 13, vs. Memphis, 11/21/10  
 Career: 30, at Vanderbilt, 2/13/01

- Top Career Scoring Games**
- 8 -- vs. Memphis, 11/21/10
  - 7 -- vs. McNeese, 1/4/10
  - 6 -- vs. Arkansas, 2/24/10
  - 6 -- at Vanderbilt, 2/13/10
  - 6 -- vs. Oregon State, 12/21/07
  - 5 -- vs. Northwestern State, 12/12/09
  - 4 -- seven times

### 2008 SEC Freshman Academic Honor Roll

#### Junior Season (2010-11)

Had a career high of eight against Memphis (11/21)

#### Green's Game-by-Game Statistics

2010-11 OPPONENT	MIN	FG	3FG	FT	REB	PF/D	A	TO	BLK	STL	PTS
Northwestern State	11	1-1	0-0	0-0	6	2-0	0	1	0	0	2
Nicholls	5	0-1	0-0	0-2	4	1-0	1	0	0	0	0
Tennessee-Martin	5	1-2	0-0	1-2	3	1-0	0	1	0	1	3
Memphis (Tupelo)	13	4-7	0-0	0-1	4	5-1	0	0	1	1	8
Centenary											
at South Alabama											
Houston											
Central Michigan											
Coastal Carolina											
McNeese State											
Wichita St. (S'port)											
North Texas											
Southern											
at Rice											
at Virginia											
at Auburn											
Arkansas											
at Kentucky											
Ole Miss											
at Tennessee											
at Alabama											
South Carolina											
Mississippi State											
at Ole Miss											
at Arkansas											
Alabama											
Florida											
at Miss. State											
Vanderbilt											
at Georgia											
Auburn											
SEC Tournament											

### Garrett Green's Career Stats

YEAR	GP-GS	MIN/AVG	FG-FGA	PCT.	3FG-FGA	PCT.	FT-FTA	PCT.	REB.-AVG	PF-FO	AST	TO	BLK	STL	PTS-AVG.
07-08	25-1	241-9.6	20-47	.426	2-5	.400	3-7	.429	40-1.6	41-1	3	11	5	1	45-1.6
08-09	Redshirt														
09-10	30-11	320-10.7	27-80	.338	1-4	.250	8-27	.296	74-2.5	51-1	9	30	10	12	63-2.1
10-11	4-0	34-8.5	6-11	.545	0-0	.000	1-5	.200	17-4.3	9-1	1	2	1	2	13-3.3
<b>Totals</b>	<b>59-12</b>	<b>595-10.1</b>	<b>53-138</b>	<b>.384</b>	<b>3-9</b>	<b>.333</b>	<b>12-39</b>	<b>.308</b>	<b>131-2.2</b>	<b>101-3</b>	<b>13</b>	<b>43</b>	<b>16</b>	<b>15</b>	<b>121-2.1</b>



# Chris Bass

Guard \* 6-1 \* 185 \* Junior \* 2L \*Baton Rouge, La. (Lee Academy Prep)

# 4

### Top Performances

**Points**  
 Season: 4, twice  
 Career: 7, twice

**Rebounds**  
 Season: 3, vs. UT-Martin, 11/18/10  
 Career: 8, vs. Grambling, 12/13/08

**Field Goals Made**  
 Season: 2, vs. UT-Martin, 11/18/10  
 Career: 3, three times

**3 PT FG Made**  
 Season:  
 Career: 2, twice

**Free Throws Made**  
 Season: 2, vs. NW St., 11/12/10  
 Career: 3, at Utah, 1/2/10

**Assists**  
 Season: 5, vs. UT-Martin, 11/18/10  
 Career: 6, four times

**Blocks**  
 Season:  
 Career: 2, vs. Utah, 1/2/10

**Steals**  
 Season: 5, vs. NW St., 11/12/10  
 Career: 5, vs. NW St., 11/12/10

**Minutes Played**  
 Season: 18, vs. NW St., 11/12/10  
 Career: 36, vs. Northwestern St., 12/12/09

### Top Career Scoring Games

1. 7 vs. Connecticut, 11/25/09
1. 7 vs. ULM, 11/13/09
3. 6 at Florida, 1/16/10
3. 6 vs. Southeastern, 12/14/09
3. 6 vs. Grambling
6. 5 vs. Kentucky, 2/6/10
6. 5 vs. Louisiana Lafayette, 12/1/09
6. 5 vs. Alabama, 2/8/09
9. 4 vs. UT-Martin, 11/18/10
9. 4 vs. NW State, 11/12/10
9. 4 vs. Northwestern State, 12/12/09
9. 4 vs. Northwestern State, 11/23/08

### Junior Season (2010-11)

Career high in steals of 5 vs. NW State (11/12) in the opener ... Back on track with assists, getting 5 with no turnovers versus UTM (11/18)

### Bass' Game-by-Game Statistics

2010-11	OPPONENT	MIN	FG	3FG	FT	REB	PF/D	A	TO	BLK	STL	PTS
	Northwestern State	18	1-1	0-0	2-4	2	2-0	2	5	0	5	4
	Nicholls	10	0-0	0-0	0-2	2	0-0	0	1	0	0	0
	Tennessee-Martin	16	2-3	0-0	0-0	3	3-0	5	0	0	0	4
	Memphis (Tupelo)	17	0-1	0-0	0-0	2	0-0	4	1	1	0	0
	Centenary											
	at South Alabama											
	Houston											
	Central Michigan											
	Coastal Carolina											
	McNeese State											
	Wichita St. (Sport)											
	North Texas											
	Southern											
	at Rice											
	at Virginia											
	at Auburn											
	Arkansas											
	at Kentucky											
	Ole Miss											
	at Tennessee											
	at Alabama											
	South Carolina											
	Mississippi State											
	at Ole Miss											
	at Arkansas											
	Alabama											
	Florida											
	at Miss. State											
	Vanderbilt											
	at Georgia											
	Auburn											
	SEC Tournament											

### Chris Bass' Career Stats

YEAR	GP-GS	MIN/AVG	FG-FGA	PCT.	3FG-FGA	PCT.	FT-FTA	PCT.	REB.-AVG	PF-FO	AST	TO	BLK	STL	PTS-AVG.
08-09	28-0	276/9.9	7-26	.269	4-14	.286	5-14	.357	31-1.1	21-0	43	14	1	5	23-0.8
09-10	31-19	744/24.0	28-84	.333	6-33	.182	8-19	.421	73-2.4	51-3	97	38	5	24	70-2.3
10-11	4-2	61-15.3	3-5	.600	0-0	.000	2-6	.333	9-2.3	5-0	11	7	1	5	8-2.0
<b>Totals</b>	<b>63-21</b>	<b>1081/17.2</b>	<b>38-115</b>	<b>.330</b>	<b>10-47</b>	<b>.213</b>	<b>15-39</b>	<b>.385</b>	<b>113-1.8</b>	<b>77-3</b>	<b>151</b>	<b>59</b>	<b>7</b>	<b>34</b>	<b>101-1.6</b>



# Malcolm White

Forward \* 6-9 \* 225 \* Junior \* Redshirt Transfer \* Baton Rouge, La. \* Ole Miss

# 5

### Top LSU Performances

#### Points

Season: 12, twice  
 Career: 12, twice

#### Rebounds

Season: 15, vs. UT-Martin, 11/18/10  
 Career: 15, vs. UT-Martin, 11/18/10

#### Field Goals Made

Season: 5, vs. UT-Martin, 11/18/10  
 Career: 5, vs. UT-Martin, 11/18/10

#### 3 PT FG Made

Season:  
 Career:

#### Free Throws Made

Season: 6, vs. NW St., 11/12/10  
 Career: 6, vs. NW St., 11/12/10

#### Assists

Season: 2, vs. UT-Martin, 11/18/10  
 Career: 2, vs. UT-Martin, 11/18/10

#### Blocks

Season: 3, twice  
 Career: 3, twice

#### Steals

Season:  
 Career:

#### Minutes Played

Season: 34, vs. NW St., 11/12/10  
 Career: 34, vs. NW St., 11/12/10

### Top LSU Career Scoring Games

1. 12 vs. UT-Martin, 11/18/10
1. 12 vs. NW State, 11/12/10
3. 5 vs. Memphis, 11/21/10
2. 2 vs. Nicholls, 11/16/10

### Junior Season (2010-11)

In first game in over a year, scored 12 points in 34 minutes with three blocks against NW St. (11/12/10) ... Had his first college double-double against UTM (11/18) with 12 points, 15 rebounds (9 offensive).

### White's Game-by-Game Statistics

#### 2009-10

OPPONENT	MIN	FG	3FG	FT	REB	PF/D	A	TO	BLK	STL	PTS
Northwestern State	34	3-8	0-0	6-11	4	4-0	0	4	3	0	12
Nicholls	10	1-1	0-0	0-0	2	3-0	0	3	1	0	2
Tennessee-Martin	31	5-13	0-0	2-4	15	2-0	2	3	3	0	12
Memphis (Tupelo)	17	1-4	0-0	3-4	4	5-1	0	1	1	0	5
Centenary											
at South Alabama											
Houston											
Central Michigan											
Coastal Carolina											
McNeese State											
Wichita St. (S'port)											
North Texas											
Southern											
at Rice											
at Virginia											
at Auburn											
Arkansas											
at Kentucky											
Ole Miss											
at Tennessee											
at Alabama											
South Carolina											
Mississippi State											
at Ole Miss											
at Arkansas											
Alabama											
Florida											
at Miss. State											
Vanderbilt											
at Georgia											
Auburn											
SEC Tournament											

### Malcolm White's Career Stats

YEAR	GP-GS	MIN/AVG	FG-FGA	PCT.	3FG-FGA	PCT.	FT-FTA	PCT.	REB.-AVG	PF-FO	AST	TO	BLK	STL	PTS-AVG.
10-11	4-4	92-23.0	10-26	.385	0-0	.000	11-19	.579	25-6.3	14-1	2	11	8	0	31-7.8
<b>Totals</b>	<b>4-4</b>	<b>92-23.0</b>	<b>10-26</b>	<b>.385</b>	<b>0-0</b>	<b>.000</b>	<b>11-19</b>	<b>.579</b>	<b>25-6.3</b>	<b>14-1</b>	<b>2</b>	<b>11</b>	<b>8</b>	<b>0</b>	<b>31-7.8</b>



# Andre Stringer

Guard \* 5-9 \* 170 \* Freshman \* HS \* Jackson, Miss. (Forest Park HS)

# 10

### Top Performances

#### Points

Season:	21, vs. NW St., 11/12/10
Career:	21, vs. NW St., 11/12/10

#### Rebounds

Season:	3, vs. NW St., 11/12/10
Career:	3, vs. NW St., 11/12/10

#### Field Goals Made

Season:	5, vs. NW St., 11/12/10
Career:	5, vs. NW St., 11/12/10

#### 3 PT FG Made

Season:	4, vs. NW St., 11/12/10
Career:	4, vs. NW St., 11/12/10

#### Free Throws Made

Season:	8, twice
Career:	8, twice

#### Assists

Season:	5, vs. NW St., 11/12/10
Career:	5, vs. NW St., 11/12/10

#### Blocks

Season:	
Career:	

#### Steals

Season:	3, vs. UT-Martin, 11/18/10
Career:	3, vs. UT-Martin, 11/18/10

#### Minutes Played

Season:	32, vs. UT-Martin, 11/18/10
Career:	32, vs. UT-Martin, 11/18/10

### Top Career Scoring Games

1.	21	vs. NW State, 11/12/10
2.	15	vs. UT-Martin, 11/18/10
3.	14	vs. Nicholls, 11/16/10
4.	13	vs. Memphis, 11/21/10

### Freshman Season (2010-11)

Hit four treys in the season opener against NW State (11/12), with five assists in scoring 21 points ... Third straight double figure scoring game against UTM (11/18) with 15 points in his first career start ... Led team for fourth straight game in scoring with big second half against Memphis (11/21) ... 26 free throws made in first four games.

### Stringer's Game-by-Game Statistics

#### 2009-10

OPPONENT	MIN	FG	3FG	FT	REB	PF/D	A	TO	BLK	STL	PTS
Northwestern State	25	5-10	4-9	7-10	3	4-0	5	6	0	0	21
Nicholls	31	4-13	3-8	3-3	2	0-0	3	0	0	0	14
Tennessee-Martin	32	3-12	1-7	8-9	2	2-0	1	2	0	3	15
Memphis (Tupelo)	31	2-6	1-3	8-11	2	3-0	2	3	0	1	31
Centenary											
at South Alabama											
Houston											
Central Michigan											
Coastal Carolina											
McNeese State											
Wichita St. (Sport)											
North Texas											
Southern											
at Rice											
at Virginia											
at Auburn											
Arkansas											
at Kentucky											
Ole Miss											
at Tennessee											
at Alabama											
South Carolina											
Mississippi State											
at Ole Miss											
at Arkansas											
Alabama											
Florida											
at Miss. State											
Vanderbilt											
at Georgia											
Auburn											
SEC Tournament											

### Andre Stringer's Career Stats

YEAR	GP-GS	MIN/AVG	FG-FGA	PCT.	3FG-FGA	PCT.	FT-FTA	PCT.	REB.-AVG	PF-FO	AST	TO	BLK	STL	PTS-AVG.
10-11	4-2	119-29.8	14-41	.341	9-27	.333	26-33	.788	9-2.3	9-0	11	11	0	4	63-15.8
<b>Totals</b>	<b>4-2</b>	<b>119-29.8</b>	<b>14-41</b>	<b>.341</b>	<b>9-27</b>	<b>.333</b>	<b>26-33</b>	<b>.788</b>	<b>9-2.3</b>	<b>9-0</b>	<b>11</b>	<b>11</b>	<b>0</b>	<b>4</b>	<b>63-15.8</b>



# Eddie Ludwig

Forward \* 6-9 \* 215 \* Sophomore \* 1L \* Metairie, La. (Metairie Park Country Day)

# 13

### Top Performances

<b>Points</b>	
Season:	8, vs. Memphis, 11/21/10
Career:	9, twice

<b>Rebounds</b>	
Season:	8, vs. Memphis, 11/21/10
Career:	8, vs. Memphis, 11/21/10

<b>Field Goals Made</b>	
Season:	3, vs. Memphis, 11/21/10
Career:	3, three times

<b>3 PT FG Made</b>	
Season:	
Career:	

<b>Free Throws Made</b>	
Season:	5, vs. UT-Martin, 11/18/10
Career:	5, twice

<b>Assists</b>	
Season:	1, vs. Memphis, 11/21/10
Career:	5, at Arkansas, 2/10/10

<b>Blocks</b>	
Season:	
Career:	1, three times

<b>Steals</b>	
Season:	3, vs. NW St., 11/12/10
Career:	4, vs. Georgia, 3/6/10

<b>Minutes Played</b>	
Season:	32, vs. Memphis, 11/21/10
Career:	32, vs. Memphis, 11/21/10

### Top Career Scoring Games

1.	9	at Ole Miss, 3/4/10
1.	9	vs. Rice, 12/19/08
3.	8	vs. Memphis, 11/21/10
3.	8	vs. Tennessee (SECT), 3/11/10
5.	6	vs. Connecticut, 11/25/09
6.	5	vs. UT-Martin, 11/18/10
6.	5	vs. Northwestern State, 12/12/09
8.	4	vs. Nicholls, 11/16/10
8.	4	vs. Northwestern State, 11/12/10
8.	4	at Florida, 1/16/10
8.	4	vs. Southeastern, 12/14/09

### Sophomore Season (2010-11)

His best game of the year, one point off his career high with 32 minutes with eight points against Memphis (11/21) ... Also had career high eight rebounds and career minutes played (32).

### Ludwig's Game-by-Game Statistics

2010-11	MIN	FG	3FG	FT	REB	PF/D	A	TO	BLK	STL	PTS
Northwestern State	18	0-0	0-0	4-4	3	5-1	0	2	0	3	4
Nicholls	22	1-2	0-0	2-2	2	3-0	0	2	0	0	4
Tennessee-Martin	12	0-0	0-0	5-6	1	2-0	0	0	0	0	5
Memphis (Tupelo)	32	3-7	0-2	2-2	8	3-0	1	2	0	1	8
Centenary											
at South Alabama											
Houston											
Central Michigan											
Coastal Carolina											
McNeese State											
Wichita St. (S'port)											
North Texas											
Southern											
at Rice											
at Virginia											
at Auburn											
Arkansas											
at Kentucky											
Ole Miss											
at Tennessee											
at Alabama											
South Carolina											
Mississippi State											
at Ole Miss											
at Arkansas											
Alabama											
Florida											
at Miss. State											
Vanderbilt											
at Georgia											
Auburn											
SEC Tournament											

### Eddie Ludwig's Career Stats

YEAR	GP-GS	MIN/AVG	FG-FGA	PCT.	3FG-FGA	PCT.	FT-FTA	PCT.	REB.-AVG	PF-FD	AST	TO	BLK	STL	PTS-AVG.
09-10	30-1	383/12.8	22-64	.344	0-8	.000	26-30	.867	74-2.5	47-0	19	19	3	14	70-2.3
10-11	4-0	84/21.0	4-9	.444	0-2	.000	13-14	.929	14-3.5	13-1	1	6	0	4q	21-5.3
<b>Totals</b>	<b>34-1</b>	<b>467/13.7</b>	<b>26-73</b>	<b>.356</b>	<b>0-10</b>	<b>.000</b>	<b>39-44</b>	<b>.886</b>	<b>88-2.6</b>	<b>60-1</b>	<b>20</b>	<b>25</b>	<b>3</b>	<b>18</b>	<b>91-2.7</b>



# Jalen Courtney

Forward \* 6-8 \* 210 \* Freshman \* HS \* Jackson, Miss. (Provine HS)

# 14

### Top Performances

#### Points

Season: 2, twice  
 Career: 2, twice

#### Rebounds

Season:  
 Career:

#### Field Goals Made

Season: 1, twice  
 Career: 1, twice

#### 3 PT FG Made

Season:  
 Career:

#### Free Throws Made

Season: 1, vs. UT-Martin, 11/18/10  
 Career: 1, vs. UT-Martin, 11/18/10

#### Assists

Season:  
 Career:

#### Blocks

Season:  
 Career:

#### Steals

Season:  
 Career:

#### Minutes Played

Season: 5, vs. Memphis, 11/21/10  
 Career: 5, vs. Memphis, 11/21/10

### Top Career Scoring Games

1. 3 vs. NW State, 11/12/10
2. 2 vs. Memphis, 11/21/10
3. 1 vs. UT-Martin, 11/18/10

### Freshman Season (2010-11)

#### Courtney's Game-by-Game Statistics

##### 2010-11

OPPONENT	MIN	FG	3FG	FT	REB	PF/D	A	TO	BLK	STL	PTS
Northwestern State	3	1-1	0-0	0-0	0	0-0	0	0	0	0	2
Nicholls	DNP										
Tennessee-Martin	4	0-1	0-0	1-2	1	1-0	0	0	0	0	1
Memphis (Tupelo)	5	1-1	0-0	0-0	0	1-0	0	0	0	0	2
Centenary											
at South Alabama											
Houston											
Central Michigan											
Coastal Carolina											
McNeese State											
Wichita St. (Sport)											
North Texas											
Southern											
at Rice											
at Virginia											
at Auburn											
Arkansas											
at Kentucky											
Ole Miss											
at Tennessee											
at Alabama											
South Carolina											
Mississippi State											
at Ole Miss											
at Arkansas											
Alabama											
Florida											
at Miss. State											
Vanderbilt											
at Georgia											
Auburn											
SEC Tournament											

### Jalen Courtney's Career Stats

YEAR	GP-GS	MIN/AVG	FG-FGA	PCT.	3FG-FGA	PCT.	FT-FTA	PCT.	REB.-AVG	PF-FD	AST	TO	BLK	STL	PTS-AVG.
10-11	3-0	12-4.0	2-3	.667	0-0	.000	1-2	.500	1-0.3	2-0	0	0	0	0	5-1.7
<b>Totals</b>	<b>3-0</b>	<b>12-4.0</b>	<b>2-3</b>	<b>.667</b>	<b>0-0</b>	<b>.000</b>	<b>1-2</b>	<b>.500</b>	<b>1-0.3</b>	<b>2-0</b>	<b>0</b>	<b>0</b>	<b>0</b>	<b>0</b>	<b>5-1.7</b>



# Dennis Harris

Forward • 6-11 \* 190 \* Sophomore \* 1L \* Jonesboro, Ga. (Mundy's Mills HS)

# 15

### Top Performances

**Points**  
 Season:  
 Career: 12, vs. Alabama, 1/19/10

**Rebounds**  
 Season:  
 Career: 8, twice

**Field Goals Made**  
 Season:  
 Career: 5, three times

**3 PT FG Made**  
 Season:  
 Career: 2, vs. Miss. State, 2/20/10

**Free Throws Made**  
 Season:  
 Career: 3, vs. ULM, 11/13/09

**Assists**  
 Season:  
 Career: 4, vs. Western Ky, 11/17/09

**Blocks**  
 Season:  
 Career: 2, twice

**Steals**  
 Season:  
 Career: 2, vs. Miss. State, 2/20/10

**Minutes Played**  
 Season:  
 Career: 29, vs. Western Ky., 11/17/09

### Top Career Scoring Games

1. 12 vs. Alabama, 1/9/10
2. 10 at Auburn, 2/27/10
2. 10 vs. Mississippi State, 2/20/10
2. 10 at Vanderbilt, 2/13/10
2. 10 vs. Indiana State, 11/16/09
6. 9 vs. Western Kentucky, 11/17/09
6. 9 vs. ULM, 11/13/09
8. 8 at Alabama, 1/27/10
9. 7 vs. McNeese, 1/4/10
10. 6 three times

### Sophomore Season (2010-11)

Missed start of season with left ankle sprain (NW St., 11/12)

### Harris' Game-by-Game Statistics

2010-11	MIN	FG	3FG	FT	REB	PF/D	A	TO	BLK	STL	PTS
Northwestern State	DNP -- injury										
Nicholls	DNP -- injury										
Tennessee-Martin	DNP -- injury										
Memphis (Tupelo)	DNP -- injury										
Centenary											
at South Alabama											
Houston											
Central Michigan											
Coastal Carolina											
McNeese State											
Wichita St. (Sport)											
North Texas											
Southern											
at Rice											
at Virginia											
at Auburn											
Arkansas											
at Kentucky											
Ole Miss											
at Tennessee											
at Alabama											
South Carolina											
Mississippi State											
at Ole Miss											
at Arkansas											
Alabama											
Florida											
at Miss. State											
Vanderbilt											
at Georgia											
Auburn											
SEC Tournament											

### Dennis Harris' Career Stats

YEAR	GP-GS	MIN/AVG	FG-FGA	PCT.	3FG-FGA	PCT.	FT-FTA	PCT.	REB.-AVG	PF-FD	AST	TO	BLK	STL	PTS-AVG.
09-10	29-9	415/14.3	56-111	.505	5-16	.313	17-32	.531	91-3.1	64-1	14	19	14	8	134-4.6
<b>Totals</b>	<b>29-9</b>	<b>415/14.3</b>	<b>56-111</b>	<b>.505</b>	<b>5-16</b>	<b>.313</b>	<b>17-32</b>	<b>.531</b>	<b>91-3.1</b>	<b>64-1</b>	<b>14</b>	<b>19</b>	<b>14</b>	<b>8</b>	<b>134-4.6</b>





# Matt Derenbecker

Forward \* 6-7 \* 185 \* Freshman \* HS \* Metairie, La. (Metairie Park Country Day)

# 21

### Top Performances

**Points**  
 Season: 14, vs. Nicholls, 11/16/10  
 Career: 14, vs. Nicholls, 11/16/10

**Rebounds**  
 Season: 6, vs. Nicholls, 11/16/10  
 Career: 6, vs. Nicholls, 11/16/10

**Field Goals Made**  
 Season: 5, vs. Nicholls, 11/16/10  
 Career: 5, vs. Nicholls, 11/16/10

**3 PT FG Made**  
 Season: 3, vs. Nicholls, 11/16/10  
 Career: 3, vs. Nicholls, 11/16/10

**Free Throws Made**  
 Season: 1, vs. Nicholls, 11/16/10  
 Career: 1, vs. Nicholls, 11/16/10

**Assists**  
 Season: 1, vs. Memphis, 11/21/10  
 Career: 1, vs. Memphis, 11/21/10

**Blocks**  
 Season:  
 Career:

**Steals**  
 Season:  
 Career:

**Minutes Played**  
 Season: 25, vs. Nicholls, 11/16/10  
 Career: 25, vs. Nicholls, 11/16/10

### Top Career Scoring Games

- 14 vs. Nicholls, 11/16/10
- 2 vs. UT-Martin, 11/18/10

### Freshman Season (2010-11)

Posted his first LSU points in Nicholls game (11/16)

### Derenbecker's Game-by-Game Statistics

#### 2009-10

OPPONENT	MIN	FG	3FG	FT	REB	PF/D	A	TO	BLK	STL	PTS
Northwestern State	6	0-0	0-0	0-0	0	2-0	0	2	0	0	0
Nicholls	28	5-10	3-7	1-1	6	3-0	0	2	0	0	14
Tennessee-Martin	19	1-3	0-2	0-0	2	1-0	0	1	0	0	2
Memphis (Tupelo)	8	0-3	0-3	0-0	1	1-0	1	0	0	0	0
Centenary											
at South Alabama											
Houston											
Central Michigan											
Coastal Carolina											
McNeese State											
Wichita St. (S'port)											
North Texas											
Southern											
at Rice											
at Virginia											
at Auburn											
Arkansas											
at Kentucky											
Ole Miss											
at Tennessee											
at Alabama											
South Carolina											
Mississippi State											
at Ole Miss											
at Arkansas											
Alabama											
Florida											
at Miss. State											
Vanderbilt											
at Georgia											
Auburn											
SEC Tournament											

### Matt Derenbecker's Career Stats

YEAR	GP-GS	MIN/AVG	FG-FGA	PCT.	3FG-FGA	PCT.	FT-FTA	PCT.	REB.-AVG	PF-FO	AST	TO	BLK	STL	PTS-AVG.
10-11	4-0	61-15.3	6-16	.375	3-12	.250	1-1	1.000	9-2.3	7-0	1	5	0	0	16-4.0
<b>Totals</b>	<b>4-0</b>	<b>61-15.3</b>	<b>6-16</b>	<b>.375</b>	<b>3-12</b>	<b>.250</b>	<b>1-1</b>	<b>1.000</b>	<b>9-2.3</b>	<b>7-0</b>	<b>1</b>	<b>5</b>	<b>0</b>	<b>0</b>	<b>16-4.0</b>



# Ralston Turner

Guard \* 6-6 \* 193 \* Freshman \* HS \* Muscle Shoals, Ala. (Muscle Shoals HS)

# 22

### Top Performances

**Points**  
 Season: 21, vs. NW St., 11/12/10  
 Career: 21, vs. NW St., 11/12/10

**Rebounds**  
 Season: 5, vs. NW St., 11/12/10  
 Career: 5, vs. NW St., 11/12/10

**Field Goals Made**  
 Season: 6, vs. NW St., 11/12/10  
 Career: 6, vs. NW St., 11/12/10

**3 PT FG Made**  
 Season: 3, vs. NW St., 11/12/10  
 Career: 3, vs. NW St., 11/12/10

**Free Throws Made**  
 Season: 6, vs. NW St., 11/12/10  
 Career: 6, vs. NW St., 11/12/10

**Assists**  
 Season: 2, vs. NW St., 11/12/10  
 Career: 2, vs. NW St., 11/12/10

**Blocks**  
 Season: 1, vs. Memphis, 11/21/10  
 Career: 1, vs. Memphis, 11/21/10

**Steals**  
 Season: 2, vs. NW St., 11/12/10  
 Career: 2, vs. NW St., 11/12/10

**Minutes Played**  
 Season: 38, vs. NW St., 11/12/10  
 Career: 38, vs. NW St., 11/12/10

### Top Career Scoring Games

- 21 vs. Northwestern State., 11/12/10
- 11 vs. Memphis, 11/21/10
- 10 vs. UT-Martin, 11/18/10
- 6 vs. Nicholls, 11/16/10

### Freshman Season (2010-11)

Started the opening college game of his career and in 38 minutes scored 21 points, hitting 6-of-12 field goals with three treys against NW State (11/12) ... Third double figure game against Memphis (11/21).

### Turner's Game-by-Game Statistics

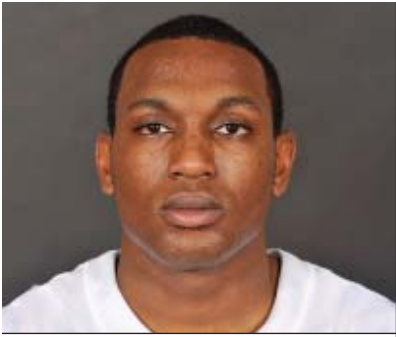
#### 2010-11

OPPONENT	MIN	FG	3FG	FT	REB	PF/D	A	TO	BLK	STL	PTS
Northwestern State	38	6-12	3-6	6-9	5	2-0	2	2	0	2	21
Nicholls	30	1-6	0-2	4-4	2	2-0	2	1	0	0	6
Tennessee-Martin	27	4-10	2-5	0-0	1	0-0	0	3	0	1	10
Memphis (Tupelo)	26	3-10	2-5	3-4	2	2-0	1	2	1	0	11

Centenary
at South Alabama
Houston
Central Michigan
Coastal Carolina
McNeese State
Wichita St. (Sport)
North Texas
Southern
at Rice
at Virginia
at Auburn
Arkansas
at Kentucky
Ole Miss
at Tennessee
at Alabama
South Carolina
Mississippi State
at Ole Miss
at Arkansas
Alabama
Florida
at Miss. State
Vanderbilt
at Georgia
Auburn
SEC Tournament

### Ralston Turner's Career Stats

YEAR	GP-GS	MIN/AVG	FG-FGA	PCT.	3FG-FGA	PCT.	FT-FTA	PCT.	REB.-AVG	PF-FD	AST	TO	BLK	STL	PTS-AVG.
10-11	4-4	121-30.3	14-38	.368	7-18	.389	13-17	.765	10-2.5	6-0	5	8	1	3	48-12.0
<b>Totals</b>	<b>4-4</b>	<b>121-30.3</b>	<b>14-38</b>	<b>.368</b>	<b>7-18</b>	<b>.389</b>	<b>13-17</b>	<b>.765</b>	<b>10-2.5</b>	<b>6-0</b>	<b>5</b>	<b>8</b>	<b>1</b>	<b>3</b>	<b>48-12.0</b>



# Storm Warren

Forward \* 6-7 \* 230 \* Junior \* 2L \* Monroe, La. (Richwood HS)

# 24

### Top Performances

**Points**  
 Season: 12, vs. UT-Martin, 12/18/10  
 Career: 21, twice

**Rebounds**  
 Season: 14, vs. Nicholls, 11/16/10  
 Career: 16, twice

**Field Goals Made**  
 Season: 6, vs. UT-Martin, 11/18/10  
 Career: 9, twice

**3 PT FG Made**  
 Season:  
 Career:

**Free Throws Made**  
 Season: 2, vs. Nicholls, 11/16/10  
 Career: 9, twice

**Assists**  
 Season: 2, vs. NW St., 11/12/10  
 Career: 4, vs. ULM, 11/13/09

**Blocks**  
 Season: 2, vs. UT-Martin, 11/18/10  
 Career: 4, twice

**Steals**  
 Season: 3, vs. Nicholls, 11/16/10  
 Career: 3, three times

**Minutes Played**  
 Season: 36, vs. Nicholls, 11/16/10  
 Career: 39, vs. UL-Lafayette, 12/1/09

### Top Career Scoring Games

1. 21 at Utah, 1/2/10
1. 21 vs. Northwestern State, 12/12/09
3. 20 vs. Western Kentucky, 11/17/09
4. 19 at South Carolina, 1/13/10
5. 18 vs. Tennessee (SECT), 3/11/10
5. 18 vs. UL-Lafayette, 12/1/09
7. 17 vs. Auburn, 1/20/10
8. 15 vs. UConn, 11/25/09
8. 15 vs. ULM, 11/13/09
10. 14 four times

### Junior Season (2010-11)

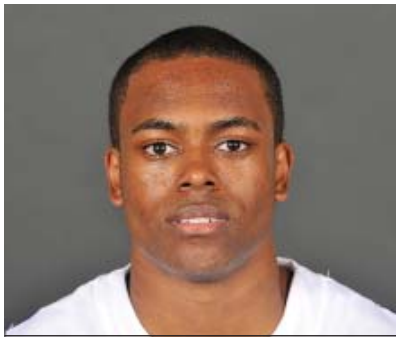
Started his 32nd consecutive game in the season opener against NW St. (11/12) .... 10th career double double against UT-Martin (11/18) and second consecutive game in double figure rebounds

### Warren's Game-by-Game Statistics

2010-11 OPPONENT	MIN	FG	3FG	FT	REB	PF/D	A	TO	BLK	STL	PTS
Northwestern State	17	2-2	0-0	0-0	4	4-0	2	2	0	1	4
Nicholls	36	3-7	0-0	2-3	14	2-0	1	2	1	3	8
Tennessee-Martin	27	6-9	0-0	0-0	11	3-0	0	2	2	2	12
Memphis (Tupelo)	14	1-6	0-0	0-0	3	5-0	0	0	0	2	2
Centenary											
at South Alabama											
Houston											
Central Michigan											
Coastal Carolina											
McNeese State											
Wichita St. (Sport)											
North Texas											
Southern											
at Rice											
at Virginia											
at Auburn											
Arkansas											
at Kentucky											
Ole Miss											
at Tennessee											
at Alabama											
South Carolina											
Mississippi State											
at Ole Miss											
at Arkansas											
Alabama											
Florida											
at Miss. State											
Vanderbilt											
at Georgia											
Auburn											
SEC Tournament											

### Storm Warren's Career Stats

YEAR	GP-GS	MIN/AVG	FG-FGA	PCT.	3FG-FGA	PCT.	FT-FTA	PCT.	REB.-AVG	PF-FD	AST	TO	BLK	STL	PTS-AVG.
08-09	30-0	224-7.5	21-49	.429	0-0	.000	19-39	.487	53-1.8	32-1	6	9	15	12	61-2.0
09-10	31-31	827-26.7	141-263	.536	0-0	.000	84-123	.683	223-7.2	104-5	13	46	44	33	366-11.8
10-11	4-4	94/23.5	12-24	.500	0-0	.000	2-3	.667	32-8.0	14-1	3	6	3	8	26-6.5
<b>Totals</b>	<b>65-35</b>	<b>1145-17.6</b>	<b>174-336</b>	<b>.518</b>	<b>0-0</b>	<b>.000</b>	<b>105-165</b>	<b>.636</b>	<b>308-4.7</b>	<b>150-7</b>	<b>22</b>	<b>61</b>	<b>62</b>	<b>53</b>	<b>453-7.0</b>



# Daron Populist

Guard \* 5-10 \* 170 \* Sophomore \* 1L \* Slidell, La. (Salmen HS)

# 25

### Top Performances

#### Points

Season: 2, vs. UT-Martin, 11/18/10  
 Career: 8, vs. Arkansas, 2/24/10

#### Rebounds

Season: 2, vs. UT-Martin, 11/18/10  
 Career: 2, three times

#### Field Goals Made

Season: 1, vs. UT-Martin, 11/18/10  
 Career: 2, vs. Arkansas, 2/24/10

#### 3 PT FG Made

Season:  
 Career: 2, vs. Arkansas, 2/24/10

#### Free Throws Made

Season  
 Career: 2, vs. Arkansas, 2/24/10

#### Assists

Season: 2, vs. NW St., 11/12/10  
 Career: 2, three times

#### Blocks

Season:  
 Career:

#### Steals

Season:  
 Career: 1, vs. Georgia, 3/6/10

#### Minutes Played

Season: 8, vs. UT-Martin, 11/18/10  
 Career: 23, twice

### Top Career Scoring Games

1. 8 vs. Arkansas, 2/24/10
2. 4 at Mississippi State, 1/30/10
3. 3 vs. Georgia, 3/6/10
3. 3 vs. Tennessee, 2/4/10
5. 2 vs. UT-Martin, 11/18/10
5. 2 at Arkansas, 2/10/10

### Sophomore Season (2010-11)

#### Populist's Game-by-Game Statistics

##### 2009-10

OPPONENT	MIN	FG	3FG	FT	REB	PF/D	A	TO	BLK	STL	PTS
Northwestern State	3	0-0	0-0	0-0	0	1-0	2	0	0	0	0
Nicholls	7	0-1	0-0	0-0	0	4-0	0	3	0	0	0
Tennessee-Martin	8	1-1	0-0	0-0	2	2-0	1	0	0	0	2
Memphis (Tupelo)	DNP										
Centenary											
at South Alabama											
Houston											
Central Michigan											
Coastal Carolina											
McNeese State											
Wichita St. (S'port)											
North Texas											
Southern											
at Rice											
at Virginia											
at Auburn											
Arkansas											
at Kentucky											
Ole Miss											
at Tennessee											
at Alabama											
South Carolina											
Mississippi State											
at Ole Miss											
at Arkansas											
Alabama											
Florida											
at Miss. State											
Vanderbilt											
at Georgia											
Auburn											
SEC Tournament											

### Daron Populist's Career Stats

YEAR	GP-GS	MIN/AVG	FG-FGA	PCT.	3FG-FGA	PCT.	FT-FTA	PCT.	REB.-AVG	PF-FO	AST	TO	BLK	STL	PTS-AVG.
09-10	16-0	156-9.8	6-21	.286	5-16	.313	3-4	.750	8-0.5	7-0	9	9	0	1	20-1.3
10-11	3-0	18-6.0	1-2	.500	0-0	.000	0-0	.000	2-0.7	7-0	3	3	0	0	2-0.7
<b>Totals</b>	<b>19-0</b>	<b>174-9.2</b>	<b>7-23</b>	<b>.304</b>	<b>5-16</b>	<b>.313</b>	<b>3-4</b>	<b>.750</b>	<b>10-0.5</b>	<b>14-0</b>	<b>12</b>	<b>12</b>	<b>0</b>	<b>1</b>	<b>22-1.2</b>



# Aaron Dotson

Guard \* 6-4 \* 205 \* Sophomore \* 1 L \* Seattle, Wash. (Rainier Beach HS)

# 45

### Top Performances

#### Points

Season: 17, vs. NW St., 11/12/10  
 Career: 17, vs. NW St., 11/12/10

#### Rebounds

Season: 6, vs. UT-Martin, 11/21/10  
 Career: 6, vs. UT-Martin, 11/21/10

#### Field Goals Made

Season: 5, vs. NW St., 11/12/10  
 Career: 5, vs. NW St., 11/12/10

#### 3 PT FG Made

Season: 2, vs. Memphis, 11/21/10  
 Career: 2, twice

#### Free Throws Made

Season: 7, vs. NW St., 11/12/10  
 Career: 7, vs. NW St., 11/12/10

#### Assists

Season: 4, vs. Memphis, 11/21/10  
 Career: 5, vs. McNeese, 1/4/10

#### Blocks

Season: 2, vs. Nicholls, 11/16/10  
 Career: 2, tjree to,es

#### Steals

Season: 2, vs. Memphis, 11/21/10  
 Career: 2, vs. Memphis, 11/21/10

#### Minutes Played

Season: 37, vs. Memphis, 11/21/10  
 Career: 38, vs. Wash. St., 12/22/09

### Top Career Scoring Games

1. 17 vs. Northwestern State, 11/12/10
2. 13 vs. UT-Martin, 11/18/10
3. 12 vs. Memphis, 11/21/10
4. 11 vs. Washington State, 12/22/09
5. 10 vs. McNeese, 1/4/10
5. 10 vs. Rice, 12/19/09
7. 7 at Ole Miss, 3/4/10
8. 6 vs. Tennessee, 2/4/10
8. 6 vs. ULM, 11/13/09
10. 5 four times

### Sophomore Season (2010-11)

Had a career high of 17 points in the season opener against NW St. (11/12)

### Dotson's Game-by-Game Statistics

#### 2010-11

OPPONENT	MIN	FG	3FG	FT	REB	PF/D	A	TO	BLK	STL	PTS
Northwestern State	27	5-5	0-0	7-8	3	4-0	0	1	1	2	17
Nicholls	21	1-2	0-0	2-2	2	3-0	0	2	0	0	5
Tennessee-Martin	19	4-8	0-1	5-6	6	3-0	2	3	0	0	13
Memphis (Tupelo)	37	3-7	2-2	4-7	4	2-0	4	4	0	2	12
Centenary											
at South Alabama											
Houston											
Central Michigan											
Coastal Carolina											
McNeese State											
Wichita St. (S'port)											
North Texas											
Southern											
at Rice											
at Virginia											
at Auburn											
Arkansas											
at Kentucky											
Ole Miss											
at Tennessee											
at Alabama											
South Carolina											
Mississippi State											
at Ole Miss											
at Arkansas											
Alabama											
Florida											
at Miss. State											
Vanderbilt											
at Georgia											
Auburn											
SEC Tournament											

### Aaron Dotson's Career Stats

YEAR	GP-GS	MIN/AVG	FG-FGA	PCT.	3FG-FGA	PCT.	FT-FTA	PCT.	REB.-AVG	PF-FO	AST	TO	BLK	STL	PTS-AVG.
09-10	29-17	539-18.6	32-109	.294	7-46	.152	23-43	.535	48-1.7	61-3	29	33	12	12	93-3.2
10-11	4-4	104-26.0	13-22	.591	2-4	.500	19-25	.760	15-3.8	13-0	7	12	3	4	47-11.8
<b>Totals</b>	<b>33-21</b>	<b>643-19.5</b>	<b>45-131</b>	<b>.344</b>	<b>9-50</b>	<b>.180</b>	<b>42-68</b>	<b>.618</b>	<b>63-1.9</b>	<b>74-3</b>	<b>36</b>	<b>45</b>	<b>15</b>	<b>16</b>	<b>141-4.3</b>

# The Last Time LSU ...

## ALL GAMES

### Scoring

Less Than 50 points	49 -- vs. Tenn. (SECT) (49-59), 3/11/10
50 or more points	61 -- vs. Memphis (61-70), 11/21/10
60 or more points	61 -- vs. Memphis (61-70), 11/21/10
70 or more points	79 -- vs. UT-Martin (79-56), 11/18/10
80 or more points	87 -- vs. NW State (87-78), 11/12/10
90 or more points	97 -- at Miss. State (97-94), 2/11/09
100 or more points	104 -- vs. Nicholls State (104-57), 11/21/05

### Opponents Scoring

Less than 50 points	48 -- vs. Arkansas (48-50), 3/6/10
50 or more points	70 -- by Memphis (70-61), 11/18/10
60 or more points	70 -- by Memphis (70-61), 11/18/10
70 or more points	70 -- by Memphis (70-61), 11/21/10
80 or more points	87 -- by Kentucky (87-52), 2/10/10
90 or more points	94 -- by Miss. State (94-97), 2/11/09
100 or more points	101 -- by Ohio State (101-113), 1-15-05

### Field Goal Percentage

Shot 29 percent or less	29.2 -- at Alabama (14-48), 1/27/10
Shot 30 percent or more	34.6 -- vs. Memphis (18-52), 11/21/10
Shot 40 percent or more	43.5 -- vs. UT-Martin (27-62), 11/18/10
Shot 50 percent or more	60.0 -- vs. NW State (24-40), 11/12/10
Shot 60 percent or more	60.0 -- vs. NW State (24-40), 11/12/10
Shot 70 percent or more	70.3 -- vs. Centenary (45-64), 1-15-03

### Opponents Field Goal Percentage

Shot 29 percent or less	27.1 -- by Grambling St. (35-55), 12/13/08
Shot 30 percent or more	46.9 -- by Memphis (23-49), 11/21/10
Shot 40 percent or more	46.9 -- by Memphis (23-49), 11/21/10
Shot 50 percent or more	51.0 -- by Ole Miss (26-51), 3/4/10
Shot 60 percent or more	61.0 -- by Arizona State (25-41), 11/27/09

### Three-Point FG Percentage

Shot less than 10 pct	7.1 -- at Xavier (1-14), 12/29/09
Shot 10 percent or more	33.3 -- vs. Memphis (5-15), 11/21/10
Shot 20 percent or more	33.3 -- vs. Memphis (5-15), 11/21/10
Shot 30 percent or more	33.3 -- vs. Memphis (5-15), 11/21/10
Shot 40 percent or more	46.7 -- vs. Northwestern St. (7-15), 11/12/10
Shot 50 percent or more	50.0 -- vs. Arizona State (5-10), 11/27/09
Shot 60 percent or more	63.6 -- vs. Georgia (7-11), 1/25/06

### Opponents Three-Point FG Percentage

Shot less than 10 pct	7.1 -- by Georgia (1-14), 1/25/06
Shot 10 percent or more	36.8 -- by Memphis (7-19), 11/21/10
Shot 20 percent or more	36.8 -- by Memphis (7-19), 11/21/10
Shot 30 percent or more	36.8 -- by Memphis (7-19), 11/21/10
Shot 40 percent or more	46.4 -- by Auburn (13-28), 2/27/10
Shot 50 percent or more	52.9 -- by Alabama (9-17), 1/27/10
Shot 60 percent or more	60.0 -- by McNeese State (9-15), 12/22/08

### Free Throw Percentage

Shot less than 50 pct	46.7 -- at Ole Miss (7-15), 1/12/08
Shot 50 percent or more	69.0 -- vs. Memphis (20-29), 11/21/10
Shot 60 percent or more	69.0 -- vs. Memphis (20-29), 11/21/10
Shot 70 percent or more	75.9 -- vs. UT-Martin (22-29), 11/18/10
Shot 80 percent or more	90.0 -- vs. Georgia (9-10), 3/6/10
Shot 90 percent or more	90.0 -- vs. Georgia (9-10), 3/6/10
Shot 100 percent	100.0 -- vs. Grambling State (4-4), 12/13/08

### Rebounds

Less than 29 rebounds	29 -- at Arkansas, 2/10/10
Had 30 or more rebounds	35 -- vs. Memphis, 11/21/10
Had 40 or more rebounds	52 -- vs. UT-Martin, 11/18/10
Had 50 or more rebounds	52 -- vs. UT-Martin, 11/18/10
Had 60 or more rebounds	60 -- vs. Troy State, 12-22-98

### Opponent Rebounds

Less than 20 rebounds	17 -- vs. Nicholls State, 12/17/08
Had 20 or more rebounds	33 -- by Memphis, 11/21/10
Had 30 or more rebounds	33 -- by Memphis, 11/21/10
Had 40 or more rebounds	41 -- by Tennessee (SECT), 3/11/10
Had 50 or more rebounds	53 -- by Kentucky, 2/6/10

### Assists

Less than 5 assists	4 -- vs. Alabama, 1-27-10
5 assists or more	13 -- vs. Memphis, 11/21/10
10 assists or more	13 -- vs. Memphis, 11/21/10
15 assists or more	22 -- vs. McNeese, 1/4/10
20 assists or more	22 -- vs. McNeese, 1/4/10
25 assists or more	26 -- vs. Troy, 11/30/08
30 or more assists	33 -- vs. Georgia State, 12-28-94

### Opponent Assists

Less than 5 assists.	4 -- by UT-Martin, 11/18/10
5 assists or more	9 -- by Memphis, 11/21/10
10 assists or more	8 -- by Northwestern St., 11/12/10
15 assists or more	17 -- by Ole Miss, 3/4/10
20 assists or more	21 -- by Vanderbilt, 1/19/08
25 assists or more	28 -- by Fresno State, 11/26/99
30 assists or more	33 -- by Kentucky, 1-16-96

### Blocks

0 blocks	0 -- at Miss. State, 1/30/10
1 or more blocks	4 -- vs. Memphis, 11/21/10
5 or more blocks	5 -- vs. UT-Martin, 11/18/10
10 or more blocks	11 -- vs. Ole Miss, 2/14/09
15 or more blocks	16 -- vs. Alcorn State, 11/20/08

### Opponent Blocks

0 blocks	0 -- by Western Kentucky, 11/17/09
1 or more blocks	5 -- by Memphis, 11/21/10
5 or more blocks	5 -- by Memphis, 11/21/10
10 or more blocks	11 -- by UConn, 1/6/07

### Steals

0 steals	0 -- vs. Georgia Tech, 3-17-90
1 or more steals	7 -- vs. Memphis, 11/21/10
5 or more steals	7 -- vs. Memphis, 11/21/10
10 or more steals	13 -- vs. Northwestern St., 11/12/10
15 or more steals	22 -- vs. Arkansas, 2-17-01

### Opponent Steals

0 steals	0 -- by Washington State, 12/27/08
1 or more steals	7 -- by Memphis, 11/21/10
5 or more steals	7 -- by Memphis, 11/21/10
10 or more steals	12 -- by Nicholls, 11/16/10
15 or more steals	16 -- by Miami (Fla.), 12-27-01

# The Last Time An LSU Player...

## ALL GAMES

Scored 20 or more points .....	21	Ralston Turner, vs. Northwestern St., 11/12/10
.....	21	Andre Stringer, vs. Northwestern St., 11/12/10
Scored 25 or more points.....	26	Bo Spencer, at Auburn, 2/27/10
Scored 30 or more points .....	38	Tasmin Mitchell, vs. Auburn, 1/20/10
Scored 35 or more points.....	38	Tasmin Mitchell, vs. Auburn, 1/20/10
Scored 40 or more points .....	41	Tasmin Mitchell, at Miss State, 2/11/09
Scored 45 or more points .....	46	Chris Jackson, vs. Vanderbilt, 2-18-90
Scored 50 or more points .....	51	Chris Jackson, vs. Texas, 1-2-90
Scored 55 or more points .....	55	Chris Jackson, vs. Ole Miss, 3-4-89
Scored 60 or more .....	64	Pete Maravich, vs. Kentucky, 2-21-70
Scored double figures in 5 straight games.....	7	Tasmin Mitchell, 1/30/10 to 2/24/10
Scored double figures in 10 straight games .....	15	Tasmin Mitchell, 11/27/09 to 1/23/10
Scored double figures in 15 straight games .....	15	Tasmin Mitchell, 11/27/09 to 1/23/10
Scored double figures in 20 straight games.....	48	Glen Davis, 3/5/05 to 12/17/06
Scored double figures in 25 straight games.....	48	Glen Davis, 3/5/05 to 12/17/06
Scored double figures in 30 straight games.....	48	Glen Davis, 3/5/05 to 12/17/06
Scored double figures in 35 straight games.....	48	Glen Davis, 3/5/05 to 12/17/06
Scored double figures in 40 straight games .....	48	Glen Davis, 3/5/05 to 12/17/06
Scored double figures in 45 or more straight game .....	48	Glen Davis, 3/5/05 to 12/17/06
Scored 20 points or more in 2 straight games .....	2	Bo Spencer, 26 at Auburn (2/27/10); 20 at Ole Miss (3/4/10)
Scored 20 points or more in 3 straight games .....	3	Bo Spencer, 22 vs. Rice (12/19/09); 23 vs. Washington State (12/22/09); 20 at Xavier (12/29/09)
.....		
Scored 20 points or more in 4 straight games .....	4	Tasmin Mitchell, 26 vs. Louisiana-Lafayette (12/1/09); 24 vs. Northwestern State (12/12/09); 24 vs. Southeastern Louisiana (12/14/09); 27 vs. Nicholls State (12/17/09)
.....		
Scored 20 points or more in 5 straight games .....	6	Marcus Thornton, 25 at Ole Miss (1/12/08); 27 vs. Auburn (1/16/08); 27 at Vandy (1/19/08); 20 vs. Arkansas (1/26/08); 38 at Auburn (1/30/08); 22 vs. Alabama (2/2/08)
.....		
Scored 30 points or more in consecutive games.....	2	Marcus Thornton, 31 vs. Miss. State (1/21/09); 30 vs. Xavier (1/24/09)
.....		
Made 10-14 field goals in a game .....	10	Tasmin Mitchell, at Miss. State, 1/30/10
Made 15 or more field goals in a game.....	15	Tasmin Mitchell, vs. Auburn, 1/20/10
Attempted 15-19 field goals in a game .....	21	Tasmin Mitchell, vs. Georgia, 3/6/10
Attempted 20-24 field goals in a game .....	21	Tasmin Mitchell, vs. Georgia, 3/6/10
Attempted 25-29 field goals in a game .....	27	Marcus Thornton, at Miss. State, 3/8/08
Attempted 30 or more field goals in a game .....	34	Ronnie Henderson, vs. Oklahoma State, 12-20-94
Made 5 three pointers in a game .....	5	Bo Spencer, at Ole Miss, 3/4/10
Made 6-9 three pointers in a game.....	6	Marcus Thornton, vs. Florida, 2/24/09
Made 10 or more three pointers in a game.....	10	Chris Jackson, vs. Tennessee, 2-10-90
Attempted 7 three pointers in a game.....	7	Andre Stringer, vs. UT-Martin, 11/18/10
Attempted 8-10 three pointers in a game .....	8	Andre Stringer, vs. Nicholls, 11/16/10
Attempted 11 or more three pointers in a game .....	11	Bo Spencer, at Ole Miss, 3/4/10

# The Last Time An LSU Player...

## ALL GAMES

Had 10 or more rebounds .....	11 Storm Warren, vs. UT-Martin, 11/18/10
Had 15 or more rebound .....	15 Malcolm White, vs. UT-Martin, 11/18/10
Had 20 or more rebounds .....	21 Jaime Lloreda, vs. McNeese State, 11-24-03
Had 10 or more rebounds in 2 straight games .....	2 Storm Warren, 14 vs. Nicholls, 11/16/10; 11 vs. UT-Martin, 11/18/10
Had 10 or more rebounds in 3 straight games .....	3 Tasmin Mitchell, 10 at Alabama, 1/27/10; 10 at Miss. State, 1/30/10; 17 vs. Tennessee, 2/4/10
.....	
Had 10 or more rebounds in 4 straight games .....	4 Tasmin Mitchell, 11 vs. Ole Miss, 1/23/10; 10 at Alabama, 1/27/10; 10 at Miss. State, 1/30/10; 17 vs. Tennessee, 2/4/10
.....	
Had 10 or more rebounds in 5 straight games .....	5 Tasmin Mitchell, 10 vs. Auburn, 1/20/10; 11 vs. Ole Miss, 1/23/10; 10 at Alabama, 1/27/10; 10 at Miss. State, 1/30/10; 17 vs. Tennessee, 2/4/10
.....	
Had 10 or more rebounds in 6 or more games.....	8 Glen Davis, 11 at Alabama, 2/4/06; 16 vs. Arkansas, 2/8/06; 15 at Florida, 2/11/06; 13 vs. Miss. State, 2/15/06; 11 at Auburn, 2/18/06; 11 at Vandy, 2/22/06; 15 vs. Kentucky, 2/25/06; 10 at S. Carolina, 2/28/06
.....	
.....	
Had 9 offensive rebounds in a game.....	9 Malcolm White, vs. UT-Martin, 11/18/10
Had 10 defensive rebounds in a game.....	12 Storm Warren, vs. Nicholls, 11/16/10
.....	
Had 5 or more assists.....	5 Chris Bass, vs. UT-Martin, 11/18/10
Had 8 or more assists.....	9 Garrett Temple, vs. Ole Miss, 2/14/09
Had 11 or more assists .....	12 Torris Bright, vs. McNeese State, 12-7-02
Had 16 or more assists .....	18 Randy Livingston, vs. George Mason, 12-3-94
.....	
Had 3 or more blocks in a game .....	3 Malcolm White, vs. UT-Martin, 11/18/10
Had 5 or more blocks in a game .....	6 Chris Johnson, at Arkansas, 2/18/09
Had 8 or more blocks in a game .....	9 Tyrus Thomas, vs. Tennessee, 1/14/06
Had 11 or more blocks in a game .....	11 Stromile Swift, vs. Alabama, 2-10-99
.....	
Had 3 or more steals in a game.....	3 Andre Stringer, vs. UT-Martin, 11/18/10
Had 5 or more steals in a game.....	5 Chris Bass, vs. Northwestern St., 11/12/10
Had 8 or more steals in a game .....	8 Clarence Ceasar, vs. Auburn, 1-8-94
Had 10 or more steals in a game .....	10 Shawn Griggs, vs. Tennessee, 2-23-91
.....	
Had a double-double .....	Malcolm White, vs. UT-Martin, 12 pts, 15 reb.
.....	Storm Warren, vs. UT-Martin, 12 pts, 11 reb.
Had a double-double in 2 straight games .....	Tasmin Mitchell, at Miss. State, 26 pts-10 reb., 1/30/10; vs. Tennessee, 13 pts-17 reb., 2/4/10
.....	
Had a double-double in 3 or more straight games.....	3 Storm Warren, vs. Northwestern State, 21 pts-16 reb., 12/12/09; vs. Southeastern La. 14 pts-12 reb, 12/14/09; vs. Nicholls St., 13 pts-11 reb., vs. 12/17/09
.....	
Had a double-double in 4 or more straight games .....	4 Storm Warren, vs. UL-Lafayette, 18 pts-16 reb., 12/1/09; vs. Northwestern State, 21 pts-16 reb., 12/1/09; vs. Southeastern La. 14 pts-12 reb., 12/14/09; vs. Nicholls State, 13 pts-11 reb., 12/17/09
.....	
.....	
Had a triple-double .....	Shaquille O'Neal, 26 pts-13 reb-11 blks, vs. BYU, 3-19-92
.....	
Played 40 minutes in a game.....	40 Bo Spencer vs. Tennessee (SECT), 3/11/10
Played 41 or more in a game .....	44 Bo Spencer, vs. Washington State, 12/22/09
.....	45 Tasmin Mitchell, vs. Washington State, 12/22/09
Played 50 or more minutes in a game .....	54 Maurice Carter, vs. Alabama, 2-10-99



**THE STAT CREW SYSTEM**  
**LSU Combined Team Statistics (as of Nov 22, 2010)**  
**All games**

<b>RECORD:</b>	<b>OVERALL</b>	<b>HOME</b>	<b>AWAY</b>	<b>NEUTRAL</b>
ALL GAMES	2-2	2-1	0-0	0-1
CONFERENCE	0-0	0-0	0-0	0-0
NON-CONFERENCE	2-2	2-1	0-0	0-1

#	Player	gp-gs	min	avg	Total		3-Point		F-Throw		Rebounds				pf	dq	a	to	blk	stl	pts	avg
					fg-fga	fg%	3fg-fga	3fg%	ft-fta	ft%	off	def	tot	avg								
10	STRINGER, Andre	4-2	119	29.8	14-41	.341	9-27	.333	26-33	.788	1	8	9	2.3	9	0	11	11	0	4	63	15.8
22	TURNER, Ralston	4-4	121	30.3	14-38	.368	7-18	.389	13-17	.765	1	9	10	2.5	6	0	5	8	1	3	48	12.0
45	DOTSON, Aaron	4-4	104	26.0	13-22	.591	2-4	.500	19-25	.760	4	11	15	3.8	13	0	7	12	3	4	47	11.8
05	WHITE, Malcolm	4-4	92	23.0	10-26	.385	0-0	.000	11-19	.579	11	14	25	6.3	14	1	2	11	8	0	31	7.8
24	WARREN, Storm	4-4	94	23.5	12-24	.500	0-0	.000	2-3	.667	10	22	32	8.0	14	1	3	6	3	8	26	6.5
13	LUDWIG, Eddie	4-0	84	21.0	4-9	.444	0-2	.000	13-14	.929	7	7	14	3.5	13	1	1	6	0	4	21	5.3
21	DERENBECKER, Matt	4-0	61	15.3	6-16	.375	3-12	.250	1-1	1.000	1	8	9	2.3	7	0	1	5	0	0	16	4.0
03	GREEN, Garrett	4-0	34	8.5	6-11	.545	0-0	.000	1-5	.200	4	13	17	4.3	9	1	1	2	1	2	13	3.3
04	BASS, Chris	4-2	61	15.3	3-5	.600	0-0	.000	2-6	.333	1	8	9	2.3	5	0	11	7	1	5	8	2.0
14	COURTNEY, Jalen	3-0	12	4.0	2-3	.667	0-0	.000	1-2	.500	0	1	1	0.3	2	0	0	0	0	0	5	1.7
25	POPULIST, Daron	3-0	18	6.0	1-2	.500	0-0	.000	0-0	.000	0	2	2	0.7	7	0	3	3	0	0	2	0.7
Team											7	7	14									
Total.....		4	800		85-197	.431	21-63	.333	89-125	.712	47	110	157	39.2	99	4	45	71	17	30	280	70.0
Opponents.....		4	800		90-232	.388	24-82	.293	62-104	.596	56	78	134	33.5	101	2	28	55	12	41	266	66.5

<b>TEAM STATISTICS</b>	<b>LSU</b>	<b>OPP</b>	<b>Date</b>	<b>Opponent</b>	<b>Score</b>	<b>Att.</b>
SCORING	280	266	11/12/10	NORTHWESTERN STATE	w 87-78	7842
Points per game	70.0	66.5	11/16/10	NICHOLLS STATE	L 53-62	6913
Scoring margin	+3.5	-	11/18/10	TENNESSEE-MARTIN	w 79-56	6607
FIELD GOALS-ATT	85-197	90-232	11/21/10	vs Memphis	L 61-70	7941
Field goal pct	.431	.388	* - Conference game			
3 POINT FG-ATT	21-63	24-82				
3-point FG pct	.333	.293				
3-pt FG made per game	5.3	6.0				
FREE THROWS-ATT	89-125	62-104				
Free throw pct	.712	.596				
F-Throws made per game	22.3	15.5				
REBOUNDS	157	134				
Rebounds per game	39.2	33.5				
Rebounding margin	+5.8	-				
ASSISTS	45	28				
Assists per game	11.3	7.0				
TURNOVERS	71	55				
Turnovers per game	17.8	13.8				
Turnover margin	-4.0	-				
Assist/turnover ratio	0.6	0.5				
STEALS	30	41				
Steals per game	7.5	10.3				
BLOCKS	17	12				
Blocks per game	4.3	3.0				
ATTENDANCE	21362	7941				
Home games-Avg/Game	3-7121	0-0				
Neutral site-Avg/Game	-	1-7941				

<b>Score by Periods</b>	<b>1st</b>	<b>2nd</b>	<b>Totals</b>
LSU	138	142	280
Opponents	114	152	266

**THE STAT CREW SYSTEM**  
**LSU Category Leaders (as of Nov 22, 2010)**  
**All games**

<b>Points</b>	<b>G</b>	<b>Pts</b>	<b>Pts/G</b>	<b>Scoring Average</b>	<b>G</b>	<b>Pts</b>	<b>Avg/G</b>
STRINGER, Andre	4	63	15.8	STRINGER, Andre	4	63	15.8
TURNER, Ralston	4	48	12.0	TURNER, Ralston	4	48	12.0
DOTSON, Aaron	4	47	11.8	DOTSON, Aaron	4	47	11.8
WHITE, Malcolm	4	31	7.8	WHITE, Malcolm	4	31	7.8
WARREN, Storm	4	26	6.5	WARREN, Storm	4	26	6.5
LUDWIG, Eddie	4	21	5.3	LUDWIG, Eddie	4	21	5.3
DERENBECKER, Matt	4	16	4.0	DERENBECKER, Matt	4	16	4.0
GREEN, Garrett	4	13	3.3	GREEN, Garrett	4	13	3.3
BASS, Chris	4	8	2.0	BASS, Chris	4	8	2.0
COURTNEY, Jalen	3	5	1.7	COURTNEY, Jalen	3	5	1.7
POPULIST, Daron	3	2	0.7	POPULIST, Daron	3	2	0.7

<b>FG Percentage</b>	<b>FG</b>	<b>Att</b>	<b>Pct</b>	<b>Field Goal Attempts</b>	<b>G</b>	<b>Att</b>	<b>Att/G</b>
COURTNEY, Jalen	2	3	.667	STRINGER, Andre	4	41	10.3
BASS, Chris	3	5	.600	TURNER, Ralston	4	38	9.5
DOTSON, Aaron	13	22	.591	WHITE, Malcolm	4	26	6.5
GREEN, Garrett	6	11	.545	WARREN, Storm	4	24	6.0
WARREN, Storm	12	24	.500	DOTSON, Aaron	4	22	5.5
POPULIST, Daron	1	2	.500				
LUDWIG, Eddie	4	9	.444	<b>Field Goals Made</b>	<b>G</b>	<b>Made</b>	<b>Made/G</b>
WHITE, Malcolm	10	26	.385	STRINGER, Andre	4	14	3.5
DERENBECKER, Matt	6	16	.375	TURNER, Ralston	4	14	3.5
TURNER, Ralston	14	38	.368	DOTSON, Aaron	4	13	3.3
STRINGER, Andre	14	41	.341	WARREN, Storm	4	12	3.0
				WHITE, Malcolm	4	10	2.5

<b>3-Point Percentage</b>	<b>3FG</b>	<b>Att</b>	<b>Pct</b>	<b>3-Point FG Attempts</b>	<b>G</b>	<b>Att</b>	<b>Att/G</b>
DOTSON, Aaron	2	4	.500	STRINGER, Andre	4	27	6.8
TURNER, Ralston	7	18	.389	TURNER, Ralston	4	18	4.5
STRINGER, Andre	9	27	.333	DERENBECKER, Matt	4	12	3.0
DERENBECKER, Matt	3	12	.250	DOTSON, Aaron	4	4	1.0
LUDWIG, Eddie	0	2	.000	LUDWIG, Eddie	4	2	0.5

<b>3-Point FG Made</b>	<b>G</b>	<b>Made</b>	<b>Made/G</b>
STRINGER, Andre	4	9	2.3
TURNER, Ralston	4	7	1.8
DERENBECKER, Matt	4	3	0.8
DOTSON, Aaron	4	2	0.5

<b>Free Throw Percent</b>	<b>FG</b>	<b>Att</b>	<b>Pct</b>	<b>Free Throw Attempts</b>	<b>G</b>	<b>Att</b>	<b>Att/G</b>
DERENBECKER, Matt	1	1	1.000	STRINGER, Andre	4	33	8.3
LUDWIG, Eddie	13	14	.929	DOTSON, Aaron	4	25	6.3
STRINGER, Andre	26	33	.788	WHITE, Malcolm	4	19	4.8
TURNER, Ralston	13	17	.765	TURNER, Ralston	4	17	4.3
DOTSON, Aaron	19	25	.760	LUDWIG, Eddie	4	14	3.5
WARREN, Storm	2	3	.667				
WHITE, Malcolm	11	19	.579	<b>Free Throws Made</b>	<b>G</b>	<b>Made</b>	<b>Made/G</b>
COURTNEY, Jalen	1	2	.500	STRINGER, Andre	4	26	6.5
BASS, Chris	2	6	.333	DOTSON, Aaron	4	19	4.8
GREEN, Garrett	1	5	.200	LUDWIG, Eddie	4	13	3.3
				TURNER, Ralston	4	13	3.3
				WHITE, Malcolm	4	11	2.8

**THE STAT CREW SYSTEM**  
**LSU Category Leaders (as of Nov 22, 2010)**  
**All games**

<u>Rebounds</u>	<u>G</u>	<u>Reb</u>	<u>Reb/G</u>
WARREN, Storm	4	32	8.0
WHITE, Malcolm	4	25	6.3
GREEN, Garrett	4	17	4.3
DOTSON, Aaron	4	15	3.8
LUDWIG, Eddie	4	14	3.5

<u>Rebound Average</u>	<u>G</u>	<u>Reb</u>	<u>Avg/G</u>
WARREN, Storm	4	32	8.0
WHITE, Malcolm	4	25	6.3
GREEN, Garrett	4	17	4.3
DOTSON, Aaron	4	15	3.8
LUDWIG, Eddie	4	14	3.5

<u>Offensive Rebounds</u>	<u>G</u>	<u>No.</u>	<u>Avg/G</u>
WHITE, Malcolm	4	11	2.8
WARREN, Storm	4	10	2.5
LUDWIG, Eddie	4	7	1.8
DOTSON, Aaron	4	4	1.0
GREEN, Garrett	4	4	1.0

<u>Defensive Rebounds</u>	<u>G</u>	<u>No.</u>	<u>Avg/G</u>
WARREN, Storm	4	22	5.5
WHITE, Malcolm	4	14	3.5
GREEN, Garrett	4	13	3.3
DOTSON, Aaron	4	11	2.8
TURNER, Ralston	4	9	2.3

<u>Fouls</u>	<u>G</u>	<u>No.</u>	<u>Per/G</u>
WHITE, Malcolm	4	14	3.5
WARREN, Storm	4	14	3.5
DOTSON, Aaron	4	13	3.3
LUDWIG, Eddie	4	13	3.3
STRINGER, Andre	4	9	2.3
GREEN, Garrett	4	9	2.3

<u>Foulsouts</u>	<u>G</u>	<u>No.</u>
LUDWIG, Eddie	4	1
WHITE, Malcolm	4	1
GREEN, Garrett	4	1
WARREN, Storm	4	1

<u>Assists</u>	<u>G</u>	<u>No.</u>	<u>Ast/G</u>
BASS, Chris	4	11	2.8
STRINGER, Andre	4	11	2.8
DOTSON, Aaron	4	7	1.8
TURNER, Ralston	4	5	1.3
POPULIST, Daron	3	3	1.0
WARREN, Storm	4	3	0.8

<u>Steals</u>	<u>G</u>	<u>No.</u>	<u>Stl/G</u>
WARREN, Storm	4	8	2.0
BASS, Chris	4	5	1.3
LUDWIG, Eddie	4	4	1.0
DOTSON, Aaron	4	4	1.0
STRINGER, Andre	4	4	1.0

<u>Blocked Shots</u>	<u>G</u>	<u>No.</u>	<u>Blk/G</u>
WHITE, Malcolm	4	8	2.0
DOTSON, Aaron	4	3	0.8
WARREN, Storm	4	3	0.8
BASS, Chris	4	1	0.3
TURNER, Ralston	4	1	0.3
GREEN, Garrett	4	1	0.3

<u>Minutes</u>	<u>G</u>	<u>No.</u>	<u>Min/G</u>
TURNER, Ralston	4	121	30.3
STRINGER, Andre	4	119	29.8
DOTSON, Aaron	4	104	26.0
WARREN, Storm	4	94	23.5
WHITE, Malcolm	4	92	23.0

<u>Turnovers</u>	<u>G</u>	<u>No.</u>	<u>TO/G</u>
DOTSON, Aaron	4	12	3.0
STRINGER, Andre	4	11	2.8
WHITE, Malcolm	4	11	2.8
TURNER, Ralston	4	8	2.0
BASS, Chris	4	7	1.8

THE STAT CREW SYSTEM  
 LSU Team Game-by-Game (as of Nov 22, 2010)  
 All games

TEAM STATISTICS

Opponent	Date	Score		Total		3-Pointers		Free throws		Rebounds				pf	a	t/o	blk	stl	pts	avg
				fg-fga	pct	3fg-fga	pct	ft-fta	pct	off	def	tot	avg							
NORTHWESTERN STATE	11/12/10	87-78	W	24-40	.600	7-15	.467	32-46	.696	9	24	33	33.0	30	13	25	4	13	87	87.0
NICHOLLS STATE	11/16/10	53-62	L	16-43	.372	6-18	.333	15-21	.714	7	30	37	35.0	22	8	18	4	3	53	70.0
TENNESSEE-MARTIN	11/18/10	79-56	W	27-62	.435	3-15	.200	22-29	.759	22	30	52	40.7	20	11	15	5	7	79	73.0
vs Memphis	11/21/10	61-70	L	18-52	.346	5-15	.333	20-29	.690	9	26	35	39.2	27	13	13	4	7	61	70.0
LSU		280		85-197	.431	21-63	.333	89-125	.712	47	110	157	39.2	99	45	71	17	30	280	70.0
Opponents		266		90-232	.388	24-82	.293	62-104	.596	56	78	134	33.5	101	28	55	12	41	266	66.5

Games played: 4  
 Points/game: 70.0  
 FG Pct: 43.1  
 3FG Pct: 33.3  
 FT Pct: 71.2

Rebounds/game: 39.2  
 Assists/game: 11.3  
 Turnovers/game: 17.8  
 Assist/turnover ratio: 0.6  
 Steals/game: 7.5  
 Blocks/game: 4.3

THE STAT CREW SYSTEM  
 LSU Opponent Game-by-Game (as of Nov 22, 2010)  
 All games

OPPONENT STATISTICS

Opponent	Date	Score		Total		3-Pointers		Free throws		Rebounds				pf	a	t/o	blk	stl	pts	avg
				fg-fga	pct	3fg-fga	pct	ft-fta	pct	off	def	tot	avg							
NORTHWESTERN STATE	11/12/10	87-78	W	29-70	.414	7-26	.269	13-27	.481	24	12	36	36.0	32	8	17	3	14	78	78.0
NICHOLLS STATE	11/16/10	53-62	L	19-53	.358	6-19	.316	18-27	.667	10	23	33	34.5	19	7	8	2	12	62	70.0
TENNESSEE-MARTIN	11/18/10	79-56	W	19-60	.317	4-18	.222	14-22	.636	16	16	32	33.7	23	4	14	2	8	56	65.3
vs Memphis	11/21/10	61-70	L	23-49	.469	7-19	.368	17-28	.607	6	27	33	33.5	27	9	16	5	7	70	66.5
Opponents		266		90-232	.388	24-82	.293	62-104	.596	56	78	134	33.5	101	28	55	12	41	266	66.5
LSU		280		85-197	.431	21-63	.333	89-125	.712	47	110	157	39.2	99	45	71	17	30	280	70.0

Games played: 4  
 Points/game: 66.5  
 FG Pct: 38.8  
 3FG Pct: 29.3  
 FT Pct: 59.6

Rebounds/game: 33.5  
 Assists/game: 7.0  
 Turnovers/game: 13.8  
 Assist/turnover ratio: 0.5  
 Steals/game: 10.3  
 Blocks/game: 3.0

**THE STAT CREW SYSTEM**  
**LSU Points-Rebounds-Assists (as of Nov 22, 2010)**  
**All games**

Opponent	Date	Score		03	04	05	10	13	14	21
				GREEN,GARR	BASS,CHRIS	WHITE,MALC	STRINGER,A	LUDWIG,EDD	COURTNEY,J	DERENBECKE
NORTHWESTERN STATE	11/12/10	87-78	w	2-6-0	4-2-2	12-4-0	21-3-5	4-3-0	2-0-0	0-0-0
NICHOLLS STATE	11/16/10	53-62	L	0-4-1	0-2-0	2-2-0	14-2-3	4-2-0	DNP	14-6-0
TENNESSEE-MARTIN	11/18/10	79-56	w	3-3-0	4-3-5	12-15-2	15-2-1	5-1-0	1-1-0	2-2-0
vs Memphis	11/21/10	61-70	L	8-4-0	0-2-4	5-4-0	13-2-2	8-8-1	2-0-0	0-1-1

Opponent	Date	Score		22	24	25	45
				TURNER,RAL	WARREN,STO	POPULIST,D	DOTSON,AAR
NORTHWESTERN STATE	11/12/10	87-78	w	21-5-2	4-4-2	0-0-2	17-3-0
NICHOLLS STATE	11/16/10	53-62	L	6-2-2	8-14-1	0-0-0	5-2-1
TENNESSEE-MARTIN	11/18/10	79-56	w	10-1-0	12-11-0	2-2-1	13-6-2
vs Memphis	11/21/10	61-70	L	11-2-1	2-3-0	DNP	12-4-4

## 2010-11 LSU Men's Basketball Game Boxscores

### Game 1 - LSU 87, Northwestern State 78

11/12/10 7 p.m. at Maravich Center (Baton Rouge, LA)

NW ST	FG-A	3FG-A	FT-A	REB	PF	TP	A	TO	BLK	S	MIN
HULBIN, James f	0-4	0-2	0-2	5	4	0	0	3	1	0	8
EVANS, O.J. c	0-3	0-0	0-0	0	3	0	0	0	0	2	8
DAVIS, Shamir g	1-3	0-1	0-0	1	4	2	0	4	0	0	13
ELLIS, Louis g	1-5	0-2	2-2	4	1	4	1	2	0	1	16
CLARK, Charles g	0-1	0-0	0-0	0	1	0	1	0	0	0	9
KNIGHT, Dominic	1-6	0-1	0-0	1	2	2	1	0	0	1	12
WASHINGTON, T.	1-1	0-0	0-0	1	1	2	0	0	0	0	3
MCCONATHY, L.	0-0	0-0	0-0	0	2	0	2	0	0	0	13
ROBINSON, Patrick	0-1	0-1	0-0	0	0	0	0	0	0	0	3
BAKER, Devon	6-14	3-7	1-2	2	4	16	1	0	0	3	32
PRATT, Will	10-20	1-8	8-12	5	4	29	1	5	0	5	30
MOSLEY, William	4-5	0-0	2-9	9	4	10	0	1	2	2	30
STEWART, Gary	5-7	3-4	0-0	2	2	13	1	2	0	0	23
Team				6							
Totals	29-70	7-26	13-27	36	32	78	8	17	3	14	200

FG% 1st Half	15-30	50.0%	2nd half:	14-40	35.0%	Game:	29-70	41.4%	DB
3FG% 1st Half	4-11	36.4%	2nd half:	3-15	20.0%	Game:	7-26	26.9%	Reb
FT% 1st Half	7-9	77.8%	2nd half:	6-18	33.3%	Game:	13-27	48.1%	7

LSU	FG-A	3FG-A	FT-A	REB	PF	TP	A	TO	BLK	S	MIN
WHITE, Malcolm f	3-8	0-0	6-11	4	4	12	0	4	3	0	34
WARREN, Storm f	2-2	0-0	0-0	4	4	4	2	0	1	0	17
BASS, Chris g	1-1	0-0	2-4	2	2	4	2	5	0	5	18
TURNER, Ralson g	6-12	3-6	6-9	5	2	21	2	2	0	2	38
DOTSON, Aaron g	5-5	0-0	7-8	3	4	17	0	1	1	2	27
GREEN, Garrett	1-1	0-0	0-0	6	2	2	0	1	0	0	11
STRINGER, Andre	5-10	4-9	7-10	3	4	21	5	6	0	0	25
LUDWIG, Eddie	0-0	0-0	4-4	3	5	4	0	2	0	3	18
COURTNEY, Jalen	1-1	0-0	0-0	0	2	0	0	0	0	0	3
DERENBECKER, Matt	0-0	0-0	0-0	0	2	0	0	2	0	0	6
POPULIST, Daron	0-0	0-0	0-0	0	1	0	2	0	0	0	3
Team				3							
Totals	24-40	7-15	32-46	33	30	87	13	25	4	13	200

FG% 1st Half	13-22	59.1%	2nd half:	11-18	61.1%	Game:	24-40	60.0%	DB
3FG% 1st Half	4-10	40.0%	2nd half:	3-5	60.0%	Game:	7-15	46.7%	Reb
FT% 1st Half	13-22	59.1%	2nd half:	19-24	79.2%	Game:	32-46	69.6%	9

Officials: Tony Greene, Bert Smith, Carlos Gonzalez  
Attendance: 7842

Northwestern State 41-37 -- 78  
LSU 43-44 -- 87

### Game 2 - Nicholls 62, LSU 53

11/16/10 7 p.m. at Maravich Center (Baton Rouge, LA)

NICHOLLS	FG-A	3FG-A	FT-A	REB	PF	TP	A	TO	BLK	S	MIN
BOSE, Anatoly f	8-20	2-5	10-13	5	1	28	2	1	0	0	35
MARTIN, Ben g	0-4	0-4	2-3	3	4	2	1	0	0	2	27
FRANKLIN, Kenny g	3-6	2-4	0-1	2	1	8	3	0	1	0	33
HUNTER, Fred g	7-16	2-5	2-4	7	4	18	1	4	0	6	32
CARTER, Kellan g	0-3	0-0	1-2	3	2	1	0	1	0	3	28
THOMAS, Dantrell	0-2	0-0	0-0	2	3	0	0	0	0	1	14
HAMMOND, Bryan	1-2	0-1	0-0	3	1	2	0	1	0	0	12
MOORE, Eldridge	0-0	0-0	3-4	2	2	3	0	1	1	0	15
TALKINGTON, Chris	0-0	0-0	0-0	0	1	0	0	0	0	0	4
ROETHLE, Andy	0-0	0-0	0-0	0	0	0	0	0	0	0	0
Team				6							
Totals	19-53	6-19	18-27	33	19	62	7	8	2	12	200

FG% 1st Half	7-24	29.2%	2nd half:	12-29	41.4%	Game:	19-53	35.8%	DB
3FG% 1st Half	3-7	42.9%	2nd half:	3-12	25.0%	Game:	6-19	31.6%	Reb
FT% 1st Half	4-7	57.1%	2nd half:	14-20	70.0%	Game:	18-27	66.7%	3

LSU	FG-A	3FG-A	FT-A	REB	PF	TP	A	TO	BLK	S	MIN
WHITE, Malcolm f	1-1	0-0	0-0	2	3	2	0	3	1	0	10
WARREN, Storm f	3-7	0-0	2-3	14	2	8	1	2	1	3	36
BASS, Chris g	0-0	0-0	0-2	2	0	0	0	1	0	0	10
TURNER, Ralson g	1-6	0-2	4-4	2	2	6	2	1	0	0	30
DOTSON, Aaron g	1-2	0-1	3-4	2	4	5	1	4	2	0	21
GREEN, Garrett	0-1	0-0	0-2	4	1	0	1	0	0	0	5
STRINGER, Andre	4-13	3-8	3-3	2	0	14	3	0	0	0	31
LUDWIG, Eddie	1-2	0-0	2-2	3	4	0	2	0	0	0	22
DERENBECKER, Matt	5-10	3-7	1-1	6	3	14	0	2	0	0	28
POPULIST, Daron	0-1	0-0	0-0	0	4	0	0	3	0	0	7
Team				1							
Totals	16-43	6-18	15-21	37	22	53	8	18	4	3	200

FG% 1st Half	9-21	42.9%	2nd half:	7-22	31.8%	Game:	16-43	37.2%	DB
3FG% 1st Half	2-7	28.6%	2nd half:	4-11	36.4%	Game:	6-18	33.3%	Reb
FT% 1st Half	5-5	100.0%	2nd half:	10-16	62.5%	Game:	15-21	71.4%	3

Officials: Ted Valentine, D Doug Shows, John Heatly  
Technical Fouls: Nicholls -- None. LSU -- None.  
Attendance: 6913

Nicholls State 21-41 -- 62  
LSU 25-28 -- 53

### Game 3 - LSU 79, UT-Martin 56

11/18/10 7 p.m. at Maravich Center (Baton Rouge, LA)

UT-MARTIN	FG-A	3FG-A	FT-A	REB	PF	TP	A	TO	BLK	S	MIN
SIMMONS, Benzor f	1-6	0-2	2-2	3	0	4	1	4	0	1	25
SPENCER, Ron c	0-2	0-0	0-2	4	2	0	0	0	2	0	12
RICHARDSON, Chris g	3-9	1-4	0-1	3	3	7	1	5	0	0	23
LIABO, Mike g	3-8	1-5	2-2	1	2	9	2	0	0	1	20
CLAYTON, Reuben g	7-14	2-3	3-3	4	3	19	0	1	0	1	19
SMITH, Terrence	3-10	0-2	3-4	4	2	9	0	1	0	2	25
MINOR, Omari	1-1	0-0	3-4	2	2	5	0	1	0	0	17
KING, Troy	1-5	0-2	0-0	2	4	2	0	1	0	1	15
IRARRAZABAL, A.	0-2	0-0	0-0	1	0	0	0	0	0	0	16
SMITH, Dane	0-3	0-0	1-4	2	1	1	0	1	0	1	16
MOPO, Pierre	0-0	0-0	0-0	0	3	0	0	0	0	1	12
Team				6							
Totals	19-60	4-18	14-22	32	23	56	4	14	2	8	200

FG% 1st Half	7-22	31.82%	2nd half:	12-38	31.6%	Game:	19-60	31.7%	DB
3FG% 1st Half	1-8	12.5%	2nd half:	3-10	30.0%	Game:	4-18	22.2%	Reb
FT% 1st Half	4-8	50.0%	2nd half:	10-14	71.4%	Game:	14-22	63.6%	3

LSU	FG-A	3FG-A	FT-A	REB	PF	TP	A	TO	BLK	S	MIN
WHITE, Malcolm f	5-13	0-0	2-4	15	2	12	2	3	3	0	31
WARREN, Storm f	6-9	0-0	0-0	11	3	12	0	2	2	2	27
STRINGER, Andre g	3-12	1-7	8-9	2	15	1	2	0	3	0	32
TURNER, Ralson g	4-10	2-5	0-0	1	0	10	0	3	0	1	27
DOTSON, Aaron g	4-8	0-1	5-6	6	3	13	2	3	0	0	19
GREEN, Garrett	1-2	0-0	1-2	3	1	3	0	1	0	1	5
BASS, Chris	2-3	0-0	-0	3	3	4	5	0	0	0	16
LUDWIG, Eddie	0-0	0-0	5-6	1	2	5	0	0	0	0	12
COURTNEY, Jalen	0-1	0-0	1-2	1	1	1	0	0	0	0	4
DERENBECKER, Matt	1-3	0-2	0-0	2	1	2	0	1	0	0	19
POPULIST, Daron	1-1	0-0	0-0	2	2	2	1	0	0	0	8
Team				5							
Totals	27-62	3-15	22-29	52	20	79	11	15	5	7	200

FG% 1st Half	13-32	40.6%	2nd half:	14-30	46.7%	Game:	27-62	43.5%	DB
3FG% 1st Half	2-10	20.0%	2nd half:	1-5	20.0%	Game:	3-15	20.0%	Reb
FT% 1st Half	8-10	80.0%	2nd half:	14-19	73.7%	Game:	22-29	75.9%	4

Officials: J. B. Caldwell, Brian Shey, Chuck Jones  
Technical Fouls: UTM -- None. LSU -- None.  
Attendance: 6607

UT-Martin 19-37 -- 56  
LSU 36-43 -- 79

### Game 4 - Memphis 70, LSU 61

11/21/10 4 p.m. at BancorpSouth Arena (Tupelo, MS)

LSU	FG-A	3FG-A	FT-A	REB	PF	TP	A	TO	BLK	S	MIN
WHITE, Malcolm f	1-4	0-0	3-4	4	5	5	0	1	1	0	17
WARREN, Storm f	1-6	0-0	0-0	3	5	2	0	0	0	2	14
STRINGER, Andre g	2-6	1-3	8-11	2	3	13	2	3	0	1	31
TURNER, Ralson g	3-10	2-5	3-4	2	2	11	1	2	1	0	26
DOTSON, Aaron g	3-7	2-2									