

# LSU 2010-11 BASKETBALL

NATIONAL TITLES  
1935

SEC CHAMPIONS  
1935 • 1953 • 1954 • 1979 • 1981  
1985 • 1991 • 2000 • 2006 • 2009

NCAA FINAL FOUR  
1953 • 1981 • 1986 • 2006

1

## Northwestern State

November 12, 2010 • 7 p.m.

Baton Rouge, La. • Pete Maravich Assembly Center (13,214)

### LSU (0-0)

#### November

Fri. 12	NORTHWESTERN STATE	7 p.m.
Tues. 16	NICHOLLS STATE	7 p.m.
Thurs. 18	TENN-MARTIN (CST)	7 p.m.
Sun. 21	Memphis (at Tupelo, Miss.)(CBSCS)	4 p.m.
Wed. 24	CENTENARY	7 p.m.
Sun. 28	at South Alabama (CSS)	3 p.m.
Tues. 30	HOUSTON	7 p.m.

#### December

Sat. 11	CENTRAL MICHIGAN (CST)	7 p.m.
Mon. 13	COASTAL CAROLINA	7 p.m.
Thurs. 16	MCNEESE (CST)	7 p.m.
Sat. 18	WICHITA STATE (at Shreveport)	7 p.m.
Wed. 22	NORTH TEXAS (CST)	7 p.m.
Mon. 27	SOUTHERN (CST)	6 p.m.
Wed. 29	at Rice (CBSCS)	7 p.m.

#### January

Sun 2	at Virginia (FSN)	4:30 p.m.
Sat. 8	*at Auburn (FSN)	5 p.m.
Wed. 12	*ARKANSAS (SEC Network)	7 p.m.
Sat. 15	*at Kentucky (SEC Network)	3 p.m.
Sat. 22	*OLE MISS (SEC Network)	12:30 p.m.
Wed. 26	*at Tennessee (SEC Network)	7 p.m.
Sat. 29	*at Alabama (FSN)	7 p.m.

#### February

Wed. 2	*SOUTH CAROLINA (SEC Network)	7 p.m.
Sat. 5	*MISSISSIPPI STATE (SEC Network)	3 p.m.
Wed. 9	*at Ole Miss (CSS/CST)	8 p.m.
Sat. 12	*at Arkansas (SEC Network)	7 p.m.
Thurs. 17	*ALABAMA (ESPN/ESPN2)	8 p.m.
Sun. 20	*FLORIDA (ESPN/ESPN2)	Noon
Wed. 23	*at Mississippi State (CSS/CST)	8 p.m.
Sat. 26	*VANDERBILT (SEC Network)	12:30 p.m.

#### March

Wed. 2	*at Georgia (SEC Network)	7 p.m.
Sat. 5	*AUBURN (FSN)	6 p.m.
March 10-13	SEC Tournament (Atlanta, Ga.)	

### On the Air

#### Radio • LSU Sports Radio Network

Jim Hawthorne, play-by-play  
Ricky Blanton, analyst  
Kevin Ford, host/analyst

#### Television • None

### PROJECTED LSU LINEUP

**PG 4 Chris Bass (6-1, Jr., Baton Rouge) or  
10 Andre Stringer (5-9, Fr., Jackson, Miss.)**

Bass started 19 games and played in all 31 a year ago, averaging 2.3 points but having one of the best assist-to-turnover ratios of 97 to 38 and 140-52 in his two years ... Stringer was Mr. Basketball in the state of Mississippi averaging 26 points and nine assists a game his senior year.

**G-F 45 Aaron Dotson (6-4, So., Seattle Wash.) and/or  
21 Matt Derenbecker (6-7, Fr., Metairie, La.) and/or  
22 Ralston Turner (6-6, Fr., Muscle Shoals, Ala.)**

Dotson showed in Friday's scrimmage he completely healthy and has his confidence back from the knee surgery that shut down his senior season at Rainier Beach HS and slowed him during his freshman year at LSU ... Derenbecker, a Louisiana Gatorade Player of the Year, averaged 25.5 points in earning state's top player in the classification ... Turner hit 7-of-9 field goal attempts in the Friday scrimmage after averaging 21 points last season.

**F-F 24 Storm Warren (6-7, Jr., Monroe, La.) and/or  
5 Malcolm White (6-9, Jr., Baton Rouge, La.) and/or  
13 Eddie Ludwig (6-9, So., Metairie, La.)**

Warren started all 31 games a year ago and averaged 11.8 points and 7.2 rebounds, finishing seventh in the league in rebound average ... One of most improved players in Division I in scoring average from freshman (2.0) to sophomore season (11.8) ... White is now eligible to play after sitting out last year at LSU after transferring from Ole Miss ... Started 27 of 31 games as a sophomore for the Rebels, averaging 7.2 points a game ... Ludwig had one start as a freshman, averaging 2.3 points and 2.5 rebounds ... Average 6.3 points over the course of the last three games.

### STORYLINES

- Tigers enter the season with a two-game home winning streak dating back to last year.

- LSU enters the game with an 81-game home court winning streak against Louisiana schools which started on Dec. 8, 1988.

- Tigers have one of the youngest teams in the league with no seniors and six players who could log their first LSU minutes this season.

- Under Trent Johnson, LSU is 2-0 in season openers and the Tigers

- are 83-19 (.814) all-time in opening games.

- Next week against Tennessee-Martin (Nov. 18), LSU will play its 600th game in the Maravich Center. LSU is 453-154 (74.6%) in the building which is beginning its 40th season as the host of men's basketball games.

- Coach Trent Johnson enters his 12th season as head coach with 197 wins in 346 games, three wins shy of 200 career wins.

- Other numbers: This will be the 2,454th game played by the LSU basketball team since the program started intercollegiate play on Jan. 30, 1909 ... LSU is three wins shy of 1,400 wins in program history.

- If Storm Warren starts the season opener, it will be his 32nd consecutive start after starting every game a year ago.

- LSU and the Demons meeting for 22nd time with LSU leading 15-6 and 11-4 in Baton Rouge ... Fourth straight year teams have played.

### BREAKDOWN

#### LSU

<b>Record</b>	11-20 last year
<b>Ranking</b>	N/A
<b>Last Game</b>	March 6 in Nashville lost to Tennessee, 59-49
<b>Head Coach</b>	Trent Johnson
<b>Career Record</b>	197-149/12th season
<b>LSU Record</b>	38-28/3rd season
<b>vs. NW St.</b>	4-0

#### Northwestern State University

<b>Record</b>	10-19 last year
<b>Ranking</b>	N/A
<b>Last Game</b>	March 6 in Hammond lost to Southeastern, 77-86
<b>Head Coach</b>	Mike McConathy
<b>Career Record</b>	518-233/28th season
<b>NW St. Record</b>	166-174/12th season
<b>vs. LSU</b>	0-5

# Upcoming LSU Basketball Media Calendar

## 15

### MONDAY

#### Practice

3 p.m. -- LSU Practice Facility (Closed to the media) No formal media session because of football conference events that day.

## 16

### TUESDAY

#### Game No. 2

Nicholls State at LSU, 7 p.m. (Maravich Center) ... Tickets at [LSUtix.net](http://LSUtix.net) and beginning at 5:30 p.m. at upper concourse ticket windows. No TV, Radio: LSU Sports Radio Network (100.7 FM in Baton Rouge)

## 10

### WEDNESDAY

#### Media Session

2 p.m. - Media Room, LSU Practice Facility

## 11

### THURSDAY

#### Practice

3 p.m. - LSU Practice Facility (closed to media)

## 12

### FRIDAY

#### Game No. 1

Northwestern State at LSU, 7 p.m. (Maravich Center) No TV, Radio: LSU Sports Radio Network (100.7 FM in Baton Rouge). Live online [LSUsports.net/live](http://LSUsports.net/live)

## 13

### SATURDAY

## 14

### SUNDAY

Practice TBA

## LSU Media Services

### Media Availability

Coach Trent Johnson is available in his office for early morning appointments and phone interviews. Please contact Basketball SID Kent Lowe (225-578-1864, [clowe@lsu.edu](mailto:clowe@lsu.edu)) at least 24 hours in advance.

### SEC Teleconference

The 12 SEC coaches are featured on a teleconference each Monday, January through March through the conference season. The conference starts at 10 a.m. (CST). Coach Johnson is on at 10:28 a.m. CST. To access the media only number contact Kent Lowe or the SEC Media Relations Office (205-458-3010).

### Media Sessions

Coach Johnson meets with the media two days prior to games, before practice at a time to be announced, in the practice facility meeting room. Some travel and scheduling issues may change the time and day so media should contact the Sports Information Office to confirm start time.

### The Trent Johnson Show

Presented by Capital One Bank

The weekly call-in show takes place Mondays at 7 p.m. from T.J. Ribs on Acadian Thruway ... The show airs in Baton Rouge on local flagship New Country 100.7 FM The Tiger, on the Internet at [www.LSUsports.net](http://www.LSUsports.net) and on many LSU Sports Radio Network affiliates.

### Inside LSU Basketball

Coach Johnson's weekly TV show is on a state-wide network ... WBRZ-TV, Channel 2, airs the show at 10:35 p.m. Sundays beginning in mid-December. Television affiliates for the show are listed online at [LSUsports.net/tvaffiliates](http://LSUsports.net/tvaffiliates)

### Player Media Sessions

The players will be available at the media sessions that are normally conducted two days prior to the game. Please let Kent Lowe (225-578-1864, [clowe@lsu.edu](mailto:clowe@lsu.edu)) know which players you would like to have at the media session at least 24 hours in advance.

### Post Game

Coach Johnson will be in the media room of the practice facility after the game and the NCAA cooling off period ... Requested players will be brought to the practice facility media room as well. ... THE LSU DRESSING ROOM IS CLOSED ... To reach the media room, take the Northeast Corridor media entrance and exit the building. Take an immediate left and the LSU staffer will direct you in the back door of the media room ... The visiting team dressing area is in the Northeast Corridor and across from the media work area. ... The visiting coach has an interview area (where the pre-game meal is served) that he can use for his post-game media obligations if he wishes.

### WHO TO CONTACT

#### Sports Information Office

(225) 578-8226

**Michael Bonnette** - [mbonnet@lsu.edu](mailto:mbonnet@lsu.edu)

Assoc. AD/Sports Information Director

**C. Kent Lowe** - [clowe@lsu.edu](mailto:clowe@lsu.edu)

Sr. Assoc. Sports Information Director (Basketball Contact)

**Jake Terry** - [jterry9@lsu.edu](mailto:jterry9@lsu.edu)

Associate Sports Information Director (Social Media)

#### LSU Television

Kevin Wagner - [jwagne2@lsu.edu](mailto:jwagne2@lsu.edu)

#### LSU Radio

Jim Hawthorne - [lsuradio@lsu.edu](mailto:lsuradio@lsu.edu)

#### LSU Sports Information Mailing Address

P.O. Box 25095, Baton Rouge, LA 70894

### ON THE INTERNET

#### [www.LSUsports.net/media](http://www.LSUsports.net/media)

The Official Website of LSU Athletics is home to all the basketball information you need. Schedules, results, rosters, bios, statistics and game notes can be found and are always up to date.

#### <http://media.lsusports.net>

Media can access images for all LSU athletic teams, including action shots, heads shots, logos, etc. To gain access to the high-resolution pictures, email Michael Bonnette. You will be assigned a login and password that will enable you to retrieve pictures. This service is for the media use only.

#### [LSUsports.net/media](http://LSUsports.net/media)

Request credentials online, go to the men's basketball link.



### LSU Basketball on Twitter & Facebook

[facebook.com/lsubasketball](http://facebook.com/lsubasketball)

[twitter.com/lsubasketball](http://twitter.com/lsubasketball)

[twitter.com/lsocoachjohnson](http://twitter.com/lsocoachjohnson)

[twitter.com/lsumediaalerts](http://twitter.com/lsumediaalerts)

[LSUsports.net/connect](http://LSUsports.net/connect)

# Trent Johnson

Head Coach • 3rd year at LSU (12th year as head coach)

Trent Johnson believes the LSU basketball program is moving forward.

With an outstanding recruiting class of student-athletes that fit the LSU program, Johnson is anxious to see this group "be a team" in 2010-11.

As Johnson, the 20th head men's basketball coach at LSU enters his third season, he seeks to build on more than a decade of excellence at LSU, Stanford and Nevada. Having earned Conference Coach of the Year in all three leagues (WAC, Pac-10 and SEC), Johnson and his staff continue toward maintaining LSU basketball as one of the premier programs in the country.

In his first season at LSU, Johnson led the Tigers to 27 wins, tied for the third most wins in a season in LSU history, and won the SEC regular season championships with a record of 13-3. LSU returned to the NCAA Tournament for the first time since 2006, advancing to the second round before falling, 84-70, to North Carolina. In the opening round, LSU defeated nationally-ranked Butler.

Coach Johnson, who eats, sleeps and drinks college basketball year round, believes in both development on the court and also personal, social and academic development. As players grasp his vision for success, they have the opportunity to embrace playing in a face-paced system, executing in the half court and defending and rebounding at a high level.

Johnson has a record of success that continues here at LSU. His team will have to blend together and learn from a coach that is a fierce competitor who exudes and demands toughness.

His devotion to the team, his protective beliefs toward his players and his loyalty to his former players is evidenced by the fact that three of his former players are now members of the LSU basketball staff. Johnson is a program builder and he has re-established the base of the LSU program by visiting with former players and coaches to bring together the past, present and the future of the program.

Johnson also is charged with the development of athletes both on and off the court. Off the court, he is working hard to make sure student-athletes understand the "student" part of their days at LSU. At all three spots in his head coach-

ing career, he has developed not just successful athletes and winning basketball teams, but young men who are having success in life.

In his head coaching career, he has taken teams in seven of the last eight seasons to post-season play, including five NCAA appearances. In addition, Johnson has seen six of his former assistant coaches become head coaches at successful programs.

Johnson has been rewarded as the consensus SEC Coach of the Year and was a finalist for four national coach of the year honors as he became the first LSU men's basketball coach to win the league title and take the team to post-season play in his first year at the school.

Under Johnson's watch, he has already coached an SEC POY in Marvyn Thomas who now plays for the NO Hornets, Garrett Temple who is in his second year in the NBA with the San Antonio Spurs and Tashin Mitchell, who finished his career as the third all-time leading scorer and sixth all-time rebounder in school history.

Thomas, Temple and Mitchell represent Johnson's ability to teach and mold a well-rounded basketball player into having both a good offensive and defensive presence that can benefit the team and provide a chance to play at the next level.

Johnson has always been a big believer in special causes and joined former LSU basketball coach Dale Brown and star center Shaquille O'Neal in cutting series of commercials that aired nationally for the "Be A Match" organization in support of bone marrow donors.

This past June, Johnson was part of a 10-day trip to Africa as part of the TRIAD Trust program that was established to stop the transmission of HIV through culturally relevant, locally sustainable health and life skills education-based programs in communities affected by HIV/AIDS.

He also is a member of the Board of Directors of the National Association of Basketball Coaches and has served on the NABC Special Committee on Recruiting and Access.

Johnson, who was born in Berkeley, Calif., and call Seattle, Wash., his home, is married to Jackie and they have two children: a daughter, Tinishia, 27, and a son, Terry, 24.



## The Johnson File

**NAME:** Trent Johnson  
**BIRTH DATE:** September 12, 1956  
**AGE:** 54  
**BIRTHPLACE:** Berkeley, Calif.  
**HOMETOWN:** Seattle, Wash.  
**WIFE:** Jackie  
**CHILDREN:** Tinishia (27), Terry (24)  
**COLLEGE:** BS, Boise State University, 1986

## PLAYING EXPERIENCE

### Boise State University (Boise, Idaho)

Finished in the top 10 in career scoring and rebounding at the school ... In 1976, team advanced to NCAA Tournament after winning the Big Sky Tournament ... In his junior year, named the Most Improved Player and in his final season was named All-Big Sky.

## COACHING EXPERIENCE

**1986-89** - Assistant Coach, Utah  
**1989-92** - Assistant Coach, University of Washington  
**1992-96** - Assistant Coach, Rice  
**1996-99** - Assistant Coach, Stanford  
**1999-04** - Head Coach, University of Nevada ... Compiled a 79-74 overall record ... 2003 team went to NIT, 2004 team won WAC Tourney and advanced to the NCAA Sweet 16.  
**2004-08** - Head Coach, Stanford ... Four year record of 80-47 ... Team advanced to post-season play each of his four years, 2008 team won 28 games and advanced to the NCAA Sweet 16.  
**April 10, 2008** -- Named the 20th Head Basketball Coach at LSU.  
**2008-09** -- LSU wins the SEC title with 13-3 record, finishes 27-8 and advances to the second round of NCAA Tournament to push mark to seven straight years of coaching teams to post-season play.

## LEAGUE COACH OF THE YEAR HONORS

**2003** -- Western Athletic Conference  
**2008** -- Pac-10  
**2009** -- Southeastern Conference

## The Trent Johnson Record

YEAR	SCHOOL	/---OVERALL---/		/---CONF.---/		FINISH
		W-L	PCT.	W-L	PCT.	
1999-00	Nevada	9-20	.310	6-10	.375	3rd-Big West
2000-01	Nevada	10-18	.357	3-13	.187	9th-WAC
2001-02	Nevada	17-13	.567	9-9	.500	5th-WAC
2002-03	Nevada	18-14	.562	11-7	.611	4th-WAC/NIT First Round
2003-04	Nevada	25-9	.735	13-5	.722	1st WAC/Tourney Champ; NCAA Sweet 16
2004-05	Stanford	18-13	.581	11-7	.611	4th-Pac 10/NCAA First Round
2005-06	Stanford	16-14	.533	11-7	.611	5th-Pac 10/NIT Second Round
2006-07	Stanford	18-13	.581	10-8	.555	6th-Pac 10/NCAA First Round
2007-08	Stanford	28-7	.800	13-5	.722	2nd-Pac10/NCAA Sweet 16
<b>2008-09</b>	<b>LSU</b>	<b>27-8</b>	<b>.771</b>	<b>13-3</b>	<b>.812</b>	<b>1st-West, SEC Champs, NCAA 2nd rd.</b>
<b>2009-10</b>	<b>LSU</b>	<b>11-20</b>	<b>.354</b>	<b>2-14</b>	<b>.125</b>	<b>6th-West</b>
<b>2010-11</b>	<b>LSU</b>					
<b>Totals</b>	<b>11 Years</b>	<b>197-149</b>	<b>.569</b>	<b>102-88</b>	<b>.536</b>	<b>7 tournaments, 2 NCAA Sweet 16</b>
<b>Nevada</b>	<b>5 Years</b>	<b>79-74</b>	<b>.516</b>	<b>42-44</b>	<b>.488</b>	<b>1 WAC title, 1 NCAA Sweet 16</b>
<b>Stanford</b>	<b>4 Years</b>	<b>80-47</b>	<b>.630</b>	<b>45-27</b>	<b>.625</b>	<b>4 tournaments, 1 NCAA Sweet 16</b>
<b>LSU</b>	<b>2 Years</b>	<b>38-28</b>	<b>.576</b>	<b>15-17</b>	<b>.469</b>	<b>1 SEC Title, 1 NCAA 2nd Rd.</b>

## CAREER SPECIALTY NUMBERS

### **CAREER DOUBLE-FIGURE GAMES**

Storm Warren 21  
Dennis Harris 5  
Aaron Dotson 3

### **CAREER DOUBLE-FIGURE REBOUNDS**

Storm Warren 9

### **CAREER DOUBLE-DOUBLES**

Storm Warren 9

### **CAREER THREE-POINTERS**

Chris Bass 10  
Aaron Dotson 7  
Dennis Harris 5  
Daron Populist 5  
Garrett Green 3

### **CAREER ASSISTS**

Chris Bass 140  
Aaron Dotson 29  
Eddie Ludwig 19  
Storm Warren 19  
Dennis Harris 14  
Garrett Green 12  
Daron Populist 9

### **CAREER BLOCKS**

Storm Warren 59  
Garrett Green 15  
Dennis Harris 14  
Aaron Dotson 12  
Chris Bass 6  
Eddie Ludwig 3

### **CAREER STEALS**

Storm Warren 45  
Chris Bass 29  
Garrett Green 13  
Aaron Dotson 12  
Eddie Ludwig 14  
Dennis Harris 8  
Daron Populist 1

## 2010-11 LSU Men's Basketball Roster

NO.	NAME	CL.	POS.	HT.	WT.	EXP.	HOMETOWN/LAST SCHOOL
3	Garrett Green	Jr.	F	6-11	230	2VL	Woodland Hills, Calif/Taft HS
4	Chris Bass	Jr.	G	6-1	185	2VL	Baton Rouge, La./Lee Academy (Ma.)
5	Malcolm White	Jr.	F	6-9	225	RS	Baton Rouge, La./Ole Miss
10	Andre Stringer	Fr.	G	5-9	170	HS	Jackson, Miss./Forest Park
13	Eddie Ludwig	So.	F	6-9	215	1L	Metairie, La./Metairie Park Country Day
14	Jalen Courtney	Fr.	F	6-8	210	HS	Jackson, Miss./Provine HS
15	Dennis Harris	So.	F	6-11	190	1L	Jonesboro, Ga./Mundy's Mill HS
21	Matt Derenbecker	Fr.	F	6-7	185	HS	Metairie, La./Metairie Park Country Day
22	Ralston Turner	Fr.	G	6-6	193	HS	Muscle Shoals, Ala./Muscle Shoals HS
24	Storm Warren	Jr.	F	6-7	230	2L	Monroe, La./Richwood HS
25	Daron Populist	So.	G	5-10	170	1L	Slidell, La./Salmen HS
41**	Justin Hamilton	Jr.	C	6-11	260	TR	Alpine, Utah/Iowa State
45	Aaron Dotson	So.	G	6-4	205	1L	Seattle, Wash./Rainier Beach HS
55	Andrew Del Piero	So.	C	7-2	286	RS	Austin, Texas/Westlake HS

\*\*redshirt in 2010-11 after transferring from Iowa State

**Head Coach:** Trent Johnson (Boise State, '86), 3rd year at LSU

**Assistant Coach:** Donny Guerinoni (Nevada, '01), 3rd year at LSU

**Assistant Coach:** Lynn Nance (Washington, '65), 1st year at LSU

**Assistant Coach:** Brent Scott (Rice, '03), 3rd year at LSU

**Director of Basketball Operations:** Nick Robinson (Stanford, '05), 2nd year at LSU

**Executive Asst. to Head Coach:** Brittany Carvalhido (Oklahoma State, '05), 1st year LSU men, 3rd year at LSU

## Transactions

### The Numbers Game

Here are some of the important numbers with the LSU basketball program:

**103** – This is the start of the 103rd season of basketball at LSU.

**27-4** – LSU record in Trent Johnson era when scoring at least 70 points.

**1** -- One loss in Trent Johnson era when LSU scores at least 80 points (Aub, 1/20)

**80** -- Number of consecutive wins against Louisiana schools in the Maravich Center since Dec. 8, 1988.

**9** -- Number of career double doubles by Storm Warren (eight last season)

**6** -- Number of SEC titles LSU has won since 1980 (second most in SEC)

**3** – Number of SEC Championships won or shared since 2000 (2000, 2006, 2009)

**10** -- Number of SEC championships LSU has won, second most in league.

### Scrimmages Rather Than Exhibitions

For the third straight year, there were no men's exhibition games prior to the start of the 2010-11 season. LSU took advantage of an NCAA rule that many schools are using to play other Division I schools in private scrimmages. No media or fans are allowed to watch and the only people in the building are athletic staff members. Each team may keep stats of its own players and shoot video for teaching purposes. No publicity may be given of the results of the scrimmage.

LSU did hold a public Purple-Gold scrimmage last Friday ... In the 30-minute contest, Ralston Turner hit 7-of-9 field goals, including four treys to lead all scorers with 21 points, while Matt Derenbecker scored 13, Aaron Dotson 12 and Dennis Harris 11. Malcolm White had nine points and a scrimmage best nine rebounds ... The teams combined to shoot 13-of-26 from the arc and 15-of-19 from the free throw line.

### Opening Games

The Tigers have done well in season openers in the first 102 years of the program with an 83-19 record ... This will mark the 15th straight season the Tigers have opened in the confines of the Pete Maravich Assembly Center and LSU has won each of the last 14 openers.

### About Northwestern State, The Series

The Demons were 10-19 a year ago, but are picked third in the Southland Conference Eastern Division in the voting of SLC coaches and sports information personnel. Nicholls, whom LSU plays on Tuesday, is the favorite in the East, followed by Southeastern and Northwestern State ... Senior Will Pratt was a Preseason All-SLC selection ... He averaged 13.4 points and 4.1 rebounds while shooting 49 percent last year in his first season with the Demons. The 6-5 left-handed forward averaged 16.3 points per game in conference games.

Mike McConathy enters his 12th year in Natchitoches as the head coach of the Demons and his 27th year as a head coach.

This will mark the 22nd time overall the teams have met, the fourth consecutive year they have played ... LSU leads the series, 15-6, and 11-4 in games played in Baton Rouge ... LSU is 7-0 since the series resumed in the modern era of LSU basketball, 1989. Prior to that, the

teams had not met since a Northwestern State win in Shreveport in 1956.

### Season 40 At The PMAC

It was the 1971-72 season that the first game was played in the then LSU Assembly Center, although the Tigers had to open on the road for the first five games before returning home to open the building on Jan. 3, 1972 against Vanderbilt, an 80-73 loss. The Tigers got their first win in the building on Jan. 6, 1972 against Georgetown, 90-71.

Last year, LSU was 11-7 in the Maravich Center, 9-1 in non-conference games ... LSU is 453-154 (74.6) all-time in the building and 240-33 in non-conference games (.879) ... Trent Johnson is 21-2 in home non-conference games in his first two years.

### Success At Home

The PMAC has proved to be a difficult place to play as since the start of the 2002-03 season, LSU has won 109 games, an average of 13.6 wins per year. LSU's win total is second only to Florida in the same time period:

Florida 121

#### LSU 109

Kentucky 101

Vanderbilt 101

Tennessee 99

Alabama 94

Arkansas 91

Mississippi State 87

Auburn 84

South Carolina 84

Ole Miss 82

Georgia 77

### Past Freshman Openers For The Tigers

Stan Kaufmann, an LSU freshman himself volunteering in the SID office, did some research on some of the top freshman games in past years in opening games:

11/27/07 - S.E Louisiana - Anthony Randolph - 19 pts, 13 reb.

11/18/05 - Southern - Tasmin Mitchell - 19 pts, 12 reb; Tyrus Thomas - 18 pts, 8 reb

11/19/04 - Tulane - Glen Davis - 16 pts, 13 reb

11/21/03 - Southern - Brandon Bass - 15 pts, 11 reb; Darnell Lazare - 13 pts

11/17/01 - Campbell - Antonio Hudson - 11 pts

11/20/99 - Grambling State - Ronald Dupree - 21 pts, 8 reb, 3 ast

11/22/96 - Troy - Lester Earl - 25 pts, 7 reb, 3 ast

11/24/95 - Saint Louis - Gene Nabors - 11 pts, 9 ast

11/25/94 - S.E. Louisiana - Randy Livingston - 22 pts, 10-19 FG

11/26/93 - Ronnie Henderson - 21 pts, 5 reb, 7-10 FG

11/22/91 - N.E. Louisiana - Clarence Ceaser - 16 pts, 4 reb

11/15/89 - Mississippi State - Shaquille O'Neal - 10 pts, 5 reb

12/4/87 - Nicholls - Wayne Sims - 7 pts, 11 reb

11/28/84 - Loyola Chicago - John Williams - 21 pts, 11 reb; Jose Vargas - 22 pts, 10 reb

11/15/76 - Tulane - Rudy Macklin - 13 pts, **32 reb (school record)**; Jordy Hultberg - 28 pts, 3 reb

11/28/75 - CCNY - Lionel Green - 17 pts, 10 reb; Donald Newman - 18 pts, 8 reb

11/29/74 - Southern California - Kenny Higgs - 19 pts

12/2/67 - Tampa - Pete Maravich - 48 pts

### Seven Former Tigers On NBA Opening Day Rosters

When the NBA season got underway, there were seven former LSU players on rosters. Here's a look at how the season started for each.

**Brandon Bass, Orlando Magic** -- 8.5 ppg, 6.0 rpg, 1.3 apg

**Glen Davis, Boston Celtics** -- 12.3 ppg, 4.5 rpg, 1.0 spg

**Shaquille O'Neal, Boston Celtics** -- 8.7 ppg, 5.3 rpg (missed last five knee injury - day-to-day)

**Anthony Randolph, New York Knicks** -- 1.7 ppg, 4.0 rebounds per game

**Garrett Temple, San Antonio Spurs** -- 0.7 ppg, 0.7 rebounds per game

**Tyrus Thomas, Charlotte Bobcats** -- 11.9 ppg, 5.4 rpg, 1.4 bpg

**Marcus Thornton, New Orleans Hornets** -- 7.3 ppg, 2.7 rpg

### LSU Adds Two Important Signees During Early Signing Period

Coach Trent Johnson announced on Wednesday that the LSU athletics department had

## CAREER DOUBLE-DOUBLES

### STORM WARREN (9)

Game	Date	Pts	Reb
Alcorn State	11/20/08	11	11
ULM	11/13/09	15	12
Indiana State	11/16/09	14	12
Western Ky.	11/17/09	20	11
UL-Laf.	12/1/09	18	16
N'wesern st.	12/12/09	21	16
SE Louisiana	12/14/09	14	12
Nicholls	12/17/09	13	11
Auburn	1/20/10	17	11

### LSU Scoring Runs

5-0

6-0

7-0

8-0

9-0

10-0

11-0

12-0

13-0

14-0

15-0

### Opp. Scoring Runs

5-0

6-0

7-0

8-0

9-0

10-0

11-0

12-0

13-0

14-0

15-0



## COMPARING THE STATISTICS

Overall (last season)	LSU	NSU
Scoring Average	61.5	75.4
Opp. Scoring Average	66.4	80.4
Scoring Margin	-4.9	-5.1
FG Percentage	40.0	43.4
Opp. FG Percentage	43.1	44.6
3 PT FG Pct.	28.7	34.7
Opp. 3 PT FG Pct.	34.6	34.8
3FGs per Game	4.5	6.3
FT Percentage	69.6	60.9
Opp. FT Percentage	66.5	68.6
FT Made Per Game	12.4	17.6
Rebound Avg.	35.9	37.7
Opp. Rebound Avg.	34.9	41.6
Rebound Margin	+1.0	-3.9
Assists Average	11.4	12.5
TO Average	12.8	16.8
Blocks Average	3.7	4.9
Steals Average	6.1	7.9

received and approved two National Letters of Intent from players for the 2011-12 men's basketball season.

The players are John Isaac, a 6-4, 215-pound guard from New Llano, La., who attends Pickering High School; and, Johnny O'Bryant, a 6-9, 245-pound power forward from Cleveland, Miss., and East HS.

"It is a good day for Tiger basketball," said Coach Johnson. "Obviously, these are two quality young men who happen to be very, very good basketball players. They fit into the direction in which our program is headed, and that means playing elite level college basketball."

Isaac missed all of last season with a torn left ACL, but as a sophomore he averaged a double double with 18.5 points and 11.5 rebounds. He shot 59 percent from the field and averaged 8.6 assists and 1.8 steals. He was First-Team All-District that year in his fourth season of varsity competition for Pickering. He has been a starter on the Pickering varsity since the seventh grade.

"John Isaac is a very physical wing player who missed junior year because of an ACL injury," said Johnson. "If that injury had not occurred, he probably would have been one of the top 50 or 60 players in the country. He is a very physical and athletic young man. When you talk about physical, he is also playing football this season."

O'Bryant is the nation's No. 6 ranked power forward by ESPNU (21st overall in the country) and the No. 8 power forward and nation's 38th player overall according to Rivals.com.

He averaged 15 points and 7.2 rebounds last season as a junior as East reached the Class 3A semifinals. Two years ago, O'Bryant was a member of the USA Basketball U16 team that captured gold in Mendoza, Argentina at the FIBA Americans Championship and followed that up with another gold medal in Hamburg, Germany with the U17 national team.

"Johnny O'Bryant, if he was in a Tiger uniform today he would be one of our three best players," the third-year LSU Coach said. "He has a wealth of experience with USA Basketball and is one of the top players in the country. He gives us a physical presence with some durability on the front line and a strong skill set. He is a young man that Tiger fans need to enjoy every second of every day because he has a chance to be an impact player and play basketball for a long time.

"My assistant coaches did an excellent job, especially Brent Scott, in the recruitment process of both these young men. All that being said, fans should judge this recruiting class at the end of their career, not at the start of it. There is a lot of hard work in front of us. There is a lot of hard work in front of both of these young men. But they are looking forward, as much as I am, to achieving their goals at LSU and beyond."

### Tigers Invited to 2011 Charleston Classic

The LSU men's basketball team will be part of the eight-team field for the 2011 Charleston Classic to be contested Nov. 17, 18 and 20, 2011 at Carolina First Arena in Charleston, S.C.

The field for the fourth annual tournament in addition to the Tigers includes Georgia Tech, Saint Joseph's, Seton Hall, Tulsa, Virginia Commonwealth, Western Kentucky and Baylor.

The 2011 Charleston Classic, a bracket-format tournament, will feature 12 games over the three days. Each team will compete in one game per day, advancing through a bracket-tournament format. The two teams that remain undefeated throughout will face off in a championship match Sunday, Nov. 20, 2011.

This family-friendly tournament offers the teams a week of practice, play and experiences in-and-around historic Charleston. Addition information, including travel packages, can be found on the Charleston Classic Web site at [www.charlestonclassic.com](http://www.charlestonclassic.com)

The Charleston Classic is owned and operated by ESPN Regional Television, Inc. (ERT), a subsidiary of ESPN.

### Next Up -- A Three-Game Week, Starting Tuesday With Nicholls State

The first busy week of the non-conference begins on Tuesday night as SLC Eastern Division favorite Nicholls comes to the Maravich Center for a 7 p.m. game. There is no television for the game but the game will be broadcast on the LSU Sports Radio Network and video from the scoreboard cameras will be available at [LSUsports.net/live](http://LSUsports.net/live) in the Geaux Zone. Tickets are available starting at \$10 and \$5 for youth ages 3-12 at [LSUtix.net](http://LSUtix.net).

LSU will also host Tennessee-Martin on Thursday night, Nov. 18, at 7 p.m. in the first of five non-conference games televised by LSU partner Cox Sports TV and then the week concludes on Nov. 21 in Tupelo, Miss., as LSU faces Memphis in a 4 p.m. game televised by CBS College Sports.

# The Last Time LSU ...

## ALL GAMES

### Scoring

Less Than 50 points	49 -- vs. Tenn. (SECT) (49-59), 3/11/10
50 or more points	50 -- vs. Georgia (50-48), 3/6/10
60 or more points	65 -- vs. Arkansas (65-54), 2/24/10
70 or more points	80 -- vs. Auburn (80-84), 1/20/10
80 or more points	80 -- vs. Auburn (80-84), 1/20/10
90 or more points	97 -- at Miss. State (97-94), 2/11/09
100 or more points	104 -- vs. Nicholls State (104-57), 11/21/05

### Opponents Scoring

Less than 50 points	48 -- vs. Arkansas (48-50), 3/6/10
50 or more points	59 -- by Tennessee (SECT)(59-49), 3/11/10
60 or more points	72 -- by Ole Miss (72-59), 3/4/10
70 or more points	72 -- by Ole Miss (72-59), 3/4/10
80 or more points	87 -- by Kentucky (87-52), 2/10/10
90 or more points	94 -- by Miss. State (94-97), 2/11/09
100 or more points	101 -- by Ohio State (101-113), 1-15-05

### Field Goal Percentage

Shot 29 percent or less	29.2 -- at Alabama (14-48), 1/27/10
Shot 30 percent or more	35.7 -- vs. Tennessee (SECT)(20-56), 3/11/10
Shot 40 percent or more	47.1 -- at Auburn (24-51), 2/27/10
Shot 50 percent or more	59.6 -- vs. McNeese (31-52), 1/4/10
Shot 60 percent or more	63.6 -- vs. Grambling State (35-55), 12/13/08
Shot 70 percent or more	70.3 -- vs. Centenary (45-64), 1-15-03

### Opponents Field Goal Percentage

Shot 29 percent or less	27.1 -- by Grambling St. (35-55), 12/13/08
Shot 30 percent or more	37.3 -- by Tennessee (SECT)(19-51), 3/11/10
Shot 40 percent or more	51.0 -- by Ole Miss (26-51), 3/4/10
Shot 50 percent or more	51.0 -- by Ole Miss (26-51), 3/4/10
Shot 60 percent or more	61.0 -- by Arizona State (25-41), 11/27/09

### Three-Point FG Percentage

Shot less than 10 pct	7.1 -- at Xavier (1-14), 12/29/09
Shot 10 percent or more	18.8 -- vs. Tennessee (SECT)(3-16), 3/11/10
Shot 20 percent or more	22.7 -- vs. Georgia (5-22), 3/6/10
Shot 30 percent or more	38.9 -- at Ole Miss (7-18), 3/4/10
Shot 40 percent or more	43.8 -- vs. Arkansas (7-16), 2/24/10
Shot 50 percent or more	50.0 -- vs. Arizona State (5-10), 11/27/09
Shot 60 percent or more	63.6 -- vs. Georgia (7-11), 1/25/06

### Opponents Three-Point FG Percentage

Shot less than 10 pct	7.1 -- by Georgia (1-14), 1/25/06
Shot 10 percent or more	17.4 -- by Tennessee (SECT)(4-23), 3/11/10
Shot 20 percent or more	26.7 -- by Georgia (4-15), 3/6/10
Shot 30 percent or more	37.5 -- by Ole Miss (9-24), 3/4/10
Shot 40 percent or more	46.4 -- by Auburn (13-28), 2/27/10
Shot 50 percent or more	52.9 -- by Alabama (9-17), 1/27/10
Shot 60 percent or more	60.0 -- by McNeese State (9-15), 12/22/08

### Free Throw Percentage

Shot less than 50 pct	46.7 -- at Ole Miss (7-15), 1/12/08
Shot 50 percent or more	50.0 -- vs. Tennessee (SECT)(6-12), 3/11/10
Shot 60 percent or more	90.0 -- vs. Georgia (9-10), 3/6/10
Shot 70 percent or more	90.0 -- vs. Georgia (9-10), 3/6/10
Shot 80 percent or more	90.0 -- vs. Georgia (9-10), 3/6/10
Shot 90 percent or more	90.0 -- vs. Georgia (9-10), 3/6/10
Shot 100 percent	100.0 -- vs. Grambling State (4-4), 12/13/08

### Rebounds

Less than 29 rebounds	29 -- at Arkansas, 2/10/10
Had 30 or more rebounds	34 -- vs. Tennessee (SECT), 3/11/10
Had 40 or more rebounds	43 -- at Washington St., 12/22/09
Had 50 or more rebounds	50 -- vs. Indiana State, 11/16/09
Had 60 or more rebounds	60 -- vs. Troy State, 12-22-98

### Opponent Rebounds

Less than 20 rebounds	17 -- vs. Nicholls State, 12/17/08
Had 20 or more rebounds	41 -- by Tennessee (SECT), 3/11/10
Had 30 or more rebounds	41 -- by Tennessee (SECT), 3/11/10
Had 40 or more rebounds	41 -- by Tennessee (SECT), 3/11/10
Had 50 or more rebounds	53 -- by Kentucky, 2/6/10

### Assists

Less than 5 assists	4 -- at Alabama, 1/27/10
5 assists or more	11 -- vs. Tennessee (SECT), 3/11/10
10 assists or more	11 -- vs. Tennessee (SECT), 3/11/10
15 assists or more	22 -- vs. McNeese, 1/4/10
20 assists or more	22 -- vs. McNeese, 1/4/10
25 assists or more	26 -- vs. Troy, 11/30/08
30 or more assists	33 -- vs. Georgia State, 12-28-94

### Opponent Assists

Less than 5 assists.	1 -- by Indiana State, 11/16/09
5 assists or more	8 -- by Tennessee (SECT), 3/11/10
10 assists or more	11 -- by Georgia, 3/6/10
15 assists or more	17 -- by Ole Miss, 3/4/10
20 assists or more	21 -- by Vanderbilt, 1/19/08
25 assists or more	28 -- by Fresno State, 11/26/99
30 assists or more	33 -- by Kentucky, 1-16-96

### Blocks

0 blocks	0 -- at Miss. State, 1/30/10
1 or more blocks	4 -- vs. Tennessee (SECT), 3/11/10
5 or more blocks	9 -- vs. Arkansas, 2/24/10
10 or more blocks	11 -- vs. Ole Miss, 2/14/09
15 or more blocks	16 -- vs. Alcorn State, 11/20/08

### Opponent Blocks

0 blocks	0 -- by Western Kentucky, 11/17/09
1 or more blocks	4 -- by Tennessee (SECT), 3/11/10
5 or more blocks	9 -- by Miss. State, 2/20/10
10 or more blocks	11 -- by UConn, 1/6/07

### Steals

0 steals	0 -- vs. Georgia Tech, 3-17-90
1 or more steals	7 -- vs. Tennessee (SECT), 3/11/10
5 or more steals	7 -- vs. Tennessee (SECT), 3/11/10
10 or more steals	10 -- vs. Georgia, 3/6/10
15 or more steals	22 -- vs. Arkansas, 2-17-01

### Opponent Steals

0 steals	0 -- by Washington State, 12/27/08
1 or more steals	3 -- by Tennessee (SECT), 3/11/10
5 or more steals	7 -- by Georgia, 3/6/10
10 or more steals	11 -- by Arkansas, 2/24/10
15 or more steals	16 -- by Miami (Fla.), 12-27-01

# The Last Time An LSU Player...

## ALL GAMES

Scored 20 or more points .....	20	Tasmin Mitchell, vs. Georgia, 3/6/10
Scored 25 or more points.....	26	Bo Spencer, at Auburn, 2/27/10
Scored 30 or more points .....	38	Tasmin Mitchell, vs. Auburn, 1/20/10
Scored 35 or more points.....	38	Tasmin Mitchell, vs. Auburn, 1/20/10
Scored 40 or more points .....	41	Tasmin Mitchell, at Miss State, 2/11/09
Scored 45 or more points .....	46	Chris Jackson, vs. Vanderbilt, 2-18-90
Scored 50 or more points .....	51	Chris Jackson, vs. Texas, 1-2-90
Scored 55 or more points .....	55	Chris Jackson, vs. Ole Miss, 3-4-89
Scored 60 or more .....	64	Pete Maravich, vs. Kentucky, 2-21-70
Scored double figures in 5 straight games.....	7	Tasmin Mitchell, 1/30/10 to 2/24/10
Scored double figures in 10 straight games .....	15	Tasmin Mitchell, 11/27/09 to 1/23/10
Scored double figures in 15 straight games .....	15	Tasmin Mitchell, 11/27/09 to 1/23/10
Scored double figures in 20 straight games.....	48	Glen Davis, 3/5/05 to 12/17/06
Scored double figures in 25 straight games.....	48	Glen Davis, 3/5/05 to 12/17/06
Scored double figures in 30 straight games.....	48	Glen Davis, 3/5/05 to 12/17/06
Scored double figures in 35 straight games.....	48	Glen Davis, 3/5/05 to 12/17/06
Scored double figures in 40 straight games .....	48	Glen Davis, 3/5/05 to 12/17/06
Scored double figures in 45 or more straight game .....	48	Glen Davis, 3/5/05 to 12/17/06
Scored 20 points or more in 2 straight games .....	2	Bo Spencer, 26 at Auburn (2/27/10); 20 at Ole Miss (3/4/10)
Scored 20 points or more in 3 straight games .....	3	Bo Spencer, 22 vs. Rice (12/19/09); 23 vs. Washington State (12/22/09); 20 at Xavier (12/29/09)
Scored 20 points or more in 4 straight games .....	4	Tasmin Mitchell, 26 vs. Louisiana-Lafayette (12/1/09); 24 vs. Northwestern State (12/12/09); 24 vs. Southeastern Louisiana (12/14/09); 27 vs. Nicholls State (12/17/09)
Scored 20 points or more in 5 straight games .....	6	Marcus Thornton, 25 at Ole Miss (1/12/08); 27 vs. Auburn (1/16/08); 27 at Vandy (1/19/08); 20 vs. Arkansas (1/26/08); 38 at Auburn (1/30/08); 22 vs. Alabama (2/2/08)
Scored 30 points or more in consecutive games .....	2	Marcus Thornton, 31 vs. Miss. State (1/21/09); 30 vs. Xavier (1/24/09)
Made 10-14 field goals in a game .....	10	Tasmin Mitchell, at Miss. State, 1/30/10
Made 15 or more field goals in a game.....	15	Tasmin Mitchell, vs. Auburn, 1/20/10
Attempted 15-19 field goals in a game .....	21	Tasmin Mitchell, vs. Georgia, 3/6/10
Attempted 20-24 field goals in a game .....	21	Tasmin Mitchell, vs. Georgia, 3/6/10
Attempted 25-29 field goals in a game .....	27	Marcus Thornton, at Miss. State, 3/8/08
Attempted 30 or more field goals in a game .....	34	Ronnie Henderson, vs. Oklahoma State, 12-20-94
Made 5 three pointers in a game .....	5	Bo Spencer, at Ole Miss, 3/4/10
Made 6-9 three pointers in a game.....	6	Marcus Thornton, vs. Florida, 2/24/09
Made 10 or more three pointers in a game.....	10	Chris Jackson, vs. Tennessee, 2-10-90
Attempted 7 three pointers in a game.....	8	Bo Spencer, vs. Tennessee, 3/11/10
Attempted 8-10 three pointers in a game .....	8	Bo Spencer, vs. Tennessee, 3/11/10
Attempted 11 or more three pointers in a game .....	11	Bo Spencer, at Ole Miss, 3/4/10



# The Last Time An LSU Player...

## ALL GAMES

Had 10 or more rebounds .....	13 Tasmin Mitchell, at Ole Miss, 3/4/10
Had 15 or more rebounds.....	17 Tasmin Mitchell, vs. Tennessee, 2/4/10
Had 20 or more rebounds.....	21 Jaime Lloreda, vs. McNeese State, 11-24-03
Had 10 or more rebounds in 2 straight games .....	2 Tasmin Mitchell, 10 at Miss. State, 1/30/10; 17 vs. Tennessee, 2/4/10
Had 10 or more rebounds in 3 straight games .....	3 Tasmin Mitchell, 10 at Alabama, 1/27/10; 10 at Miss. State, 1/30/10; 17 vs. Tennessee, 2/4/10
.....	
Had 10 or more rebounds in 4 straight games .....	4 Tasmin Mitchell, 11 vs. Ole Miss, 1/23/10; 10 at Alabama, 1/27/10; 10 at Miss. State, 1/30/10; 17 vs. Tennessee, 2/4/10
.....	
Had 10 or more rebounds in 5 straight games .....	5 Tasmin Mitchell, 10 vs. Auburn, 1/20/10; 11 vs. Ole Miss, 1/23/10; 10 at Alabama, 1/27/10; 10 at Miss. State, 1/30/10; 17 vs. Tennessee, 2/4/10
.....	
Had 10 or more rebounds in 6 or more games.....	8 Glen Davis, 11 at Alabama, 2/4/06; 16 vs. Arkansas, 2/8/06; 15 at Florida, 2/11/06; 13 vs. Miss. State, 2/15/06; 11 at Auburn, 2/18/06; 11 at Vandy, 2/22/06; 15 vs. Kentucky, 2/25/06; 10 at S. Carolina, 2/28/06
.....	
.....	
Had 9 offensive rebounds in a game.....	9 Storm Warren, vs. Northwestern State, 12/12/09
Had 10 defensive rebounds in a game.....	10 Tasmin Mitchell, at Arkansas, 2/10/10
.....	
Had 5 or more assists.....	6 Chris Bass, vs. Miss. State, 2/20/10
Had 8 or more assists.....	9 Garrett Temple, vs. Ole Miss, 2/14/09
Had 11 or more assists .....	12 Torris Bright, vs. McNeese State, 12-7-02
Had 16 or more assists .....	18 Randy Livingston, vs. George Mason, 12-3-94
.....	
Had 3 or more blocks in a game .....	4 Storm Warren, vs. Georgia, 3/6/10
Had 5 or more blocks in a game .....	6 Chris Johnson, at Arkansas, 2/18/09
Had 8 or more blocks in a game .....	9 Tyrus Thomas, vs. Tennessee, 1/14/06
Had 11 or more blocks in a game .....	11 Stromile Swift, vs. Alabama, 2-10-99
.....	
.....	
Had 3 or more steals in a game.....	4 Eddie Ludwig, vs. Georgia, 3/6/10
Had 5 or more steals in a game.....	7 Marcus Thornton, at Arkansas, 2/18/09
Had 8 or more steals in a game .....	8 Clarence Ceasar, vs. Auburn, 1-8-94
Had 10 or more steals in a game .....	10 Shawn Griggs, vs. Tennessee, 2-23-91
.....	
.....	
Had a double-double .....	Tasmin Mitchell, at Ole Miss, 11 pts-13 reb., 3/4/10
Had a double-double in 2 straight games .....	Tasmin Mitchell, at Miss. State, 26 pts-10 reb., 1/30/10; vs. Tennessee, 13 pts-17 reb., 2/4/10
.....	
Had a double-double in 3 or more straight games.....	3 Storm Warren, vs. Northwestern State, 21 pts-16 reb., 12/12/09; vs. Southeastern La. 14 pts-12 reb, 12/14/09; vs. Nicholls St., 13 pts-11 reb., vs. 12/17/09
.....	
.....	
Had a double-double in 4 or more straight games .....	4 Storm Warren, vs. UL-Lafayette, 18 pts-16 reb., 12/1/09; vs. Northwestern State, 21 pts-16 reb., 12/1/09; vs. Southeastern La. 14 pts-12 reb., 12/14/09; vs. Nicholls State, 13 pts-11 reb., 12/17/09
.....	
.....	
Had a triple-double .....	Shaquille O'Neal, 26 pts-13 reb-11 blks, vs. BYU, 3-19-92
.....	
.....	
Played 40 minutes in a game.....	40 Bo Spencer vs. Tennessee (SECT), 3/11/10
Played 41 or more in a game .....	44 Bo Spencer, vs. Washington State, 12/22/09
.....	45 Tasmin Mitchell, vs. Washington State, 12/22/09
Played 50 or more minutes in a game .....	54 Maurice Carter, vs. Alabama, 2-10-99



# Garrett Green

Forward \* 6-11 \* 230 \* Junior \* 2L \* Woodland Hills, Calif. (Taft HS)

# 3

### Top Performances

**Points**  
 Season:  
 Career: 7, vs. McNeese, 1/4/10

**Rebounds**  
 Season:  
 Career: 8, vs. Southern, 11/30/07

**Field Goals Made**  
 Season:  
 Career: 3, three times

**3 PT FG Made**  
 Season:  
 Career: 1, three times

**Free Throws Made**  
 Season:  
 Career: 1, 10 times

**Assists**  
 Season:  
 Career: 3, at Florida, 1/16/10

**Blocks**  
 Season:  
 Career: 2, twice

**Steals**  
 Season:  
 Career: 3, vs. Arkansas, 2/24/10

**Minutes Played**  
 Season:  
 Career: 30, at Vanderbilt, 2/13/01

- Top Career Scoring Games**
- 7 -- vs. McNeese, 1/4/10
  - 6 -- vs. Arkansas, 2/24/10
  - 6 -- at Vanderbilt, 2/13/10
  - 6 -- vs. Oregon State, 12/21/07
  - 5 -- vs. Northwestern State, 12/12/09
  - 4 -- seven times

### 2008 SEC Freshman Academic Honor Roll

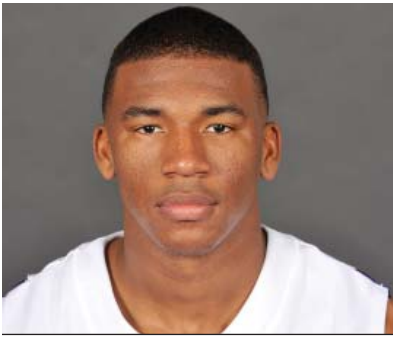
#### Junior Season (2010-11)

#### Green's Game-by-Game Statistics

2010-11	MIN	FG	3FG	FT	REB	PF/D	A	TO	BLK	STL	PTS
Northwestern State											
Nicholls											
Tennessee-Martin											
Memphis (Tupelo)											
Centenary											
at South Alabama											
Houston											
Central Michigan											
Coastal Carolina											
McNeese State											
Wichita St. (S'port)											
North Texas											
Southern											
at Rice											
at Virginia											
at Auburn											
Arkansas											
at Kentucky											
Ole Miss											
at Tennessee											
at Alabama											
South Carolina											
Mississippi State											
at Ole Miss											
at Arkansas											
Alabama											
Florida											
at Miss. State											
Vanderbilt											
at Georgia											
Auburn											
SEC Tournament											

#### Garrett Green's Career Stats

YEAR	GP-GS	MIN/AVG	FG-FGA	PCT.	3FG-FGA	PCT.	FT-FTA	PCT.	REB.-AVG	PF-FO	AST	TO	BLK	STL	PTS-AVG.
07-08	25-1	241-9.6	20-47	.426	2-5	.400	3-7	.429	40-1.6	41-1	3	11	5	1	45-1.6
08-09	Redshirt														
09-10	30-11	320-10.7	27-80	.338	1-4	.250	8-27	.296	74-2.5	51-1	9	30	10	12	63-2.1
10-11															
<b>Totals</b>	<b>55-12</b>	<b>561-10.2</b>	<b>47-127</b>	<b>.370</b>	<b>3-9</b>	<b>.333</b>	<b>11-34</b>	<b>.324</b>	<b>114-2.1</b>	<b>92-2</b>	<b>12</b>	<b>41</b>	<b>15</b>	<b>13</b>	<b>108-2.0</b>



# Chris Bass

Guard \* 6-1 \* 185 \* Junior \* 2L \*Baton Rouge, La. (Lee Academy Prep)

# 4

### Top Performances

**Points**  
 Season:  
 Career: 7, twice

**Rebounds**  
 Season:  
 Career: 8, vs. Grambling, 12/13/08

**Field Goals Made**  
 Season:  
 Career: 3, three times

**3 PT FG Made**  
 Season:  
 Career: 2, twice

**Free Throws Made**  
 Season:  
 Career: 3, at Utah, 1/2/10

**Assists**  
 Season:  
 Career: 6, four times

**Blocks**  
 Season:  
 Career: 2, vs. Utah, 1/2/10

**Steals**  
 Season:  
 Career: 4, vs. ULM, 11/13/09

**Minutes Played**  
 Season:  
 Career: 36, vs. Northwestern St., 12/12/09

- Top Career Scoring Games**
1. 7 vs. Connecticut, 11/25/09
  1. 7 vs. ULM, 11/13/09
  3. 6 at Florida, 1/16/10
  3. 6 vs. Southeastern, 12/14/09
  3. 6 vs. Grambling
  6. 5 vs. Kentucky, 2/6/10
  6. 5 vs. Louisiana Lafayette, 12/1/09
  6. 5 vs. Alabama, 2/8/09
  9. 4 vs. Northwestern State, 12/12/09
  9. 4 vs. Northwestern State, 11/23/08

### Junior Season (2010-11)

#### Bass' Game-by-Game Statistics

2010-11	MIN	FG	3FG	FT	REB	PF/D	A	TO	BLK	STL	PTS
Northwestern State											
Nicholls											
Tennessee-Martin											
Memphis (Tupelo)											
Centenary											
at South Alabama											
Houston											
Central Michigan											
Coastal Carolina											
McNeese State											
Wichita St. (Sport)											
North Texas											
Southern											
at Rice											
at Virginia											
at Auburn											
Arkansas											
at Kentucky											
Ole Miss											
at Tennessee											
at Alabama											
South Carolina											
Mississippi State											
at Ole Miss											
at Arkansas											
Alabama											
Florida											
at Miss. State											
Vanderbilt											
at Georgia											
Auburn											
SEC Tournament											

#### Chris Bass' Career Stats

YEAR	GP-GS	MIN/AVG	FG-FGA	PCT.	3FG-FGA	PCT.	FT-FTA	PCT.	REB.-AVG	PF-FO	AST	TO	BLK	STL	PTS-AVG.
08-09	28-0	276/9.9	7-26	.269	4-14	.286	5-14	.357	31-1.1	21-0	43	14	1	5	23-0.8
09-10	31-19	744/24.0	28-84	.333	6-33	.182	8-19	.421	73-2.4	51-3	97	38	5	24	70-2.3
10-11															
<b>Totals</b>	<b>59-19</b>	<b>1020/17.3</b>	<b>35-110</b>	<b>.318</b>	<b>10-47</b>	<b>.213</b>	<b>13-33</b>	<b>.394</b>	<b>104-1.8</b>	<b>72-3</b>	<b>140</b>	<b>52</b>	<b>6</b>	<b>29</b>	<b>93-1.6</b>



# Eddie Ludwig

Forward \* 6-9 \* 215 \* Sophomore \* 1L \* Metairie, La. (Metairie Park Country Day)

# 13

### Top Performances

**Points**  
 Season: \_\_\_\_\_  
 Career: 9, twice

**Rebounds**  
 Season: \_\_\_\_\_  
 Career: 6, three times

**Field Goals Made**  
 Season: \_\_\_\_\_  
 Career: 3, twice

**3 PT FG Made**  
 Season: \_\_\_\_\_  
 Career: \_\_\_\_\_

**Free Throws Made**  
 Season: \_\_\_\_\_  
 Career: 5, vs. Rice, 12/19/09

**Assists**  
 Season: \_\_\_\_\_  
 Career: 5, at Arkansas, 2/10/10

**Blocks**  
 Season: \_\_\_\_\_  
 Career: 1, three times

**Steals**  
 Season: \_\_\_\_\_  
 Career: 4, vs. Georgia, 3/6/10

**Minutes Played**  
 Season: \_\_\_\_\_  
 Career: 31, vs. Tenn. (SECT), 3/11/10

### Top Career Scoring Games

1. 9 at Ole Miss, 3/4/10
1. 9 vs. Rice, 12/19/08
3. 8 vs. Tennessee (SECT), 3/11/10
4. 6 vs. Connecticut, 11/25/09
5. 5 vs. Northwestern State, 12/12/09
6. 4 at Florida, 1/16/10
6. 4 vs. Southeastern, 12/14/09
8. 3 vs. Ole Miss, 1/23/10
9. 3 vs. Indiana State, 11/16/09
10. 2 nine times

### Sophomore Season (2010-11)

#### Ludwig's Game-by-Game Statistics

2010-11 OPPONENT	MIN	FG	3FG	FT	REB	PF/D	A	TO	BLK	STL	PTS
Northwestern State											
Nicholls											
Tennessee-Martin											
Memphis (Tupelo)											
Centenary											
at South Alabama											
Houston											
Central Michigan											
Coastal Carolina											
McNeese State											
Wichita St. (Sport)											
North Texas											
Southern											
at Rice											
at Virginia											
at Auburn											
Arkansas											
at Kentucky											
Ole Miss											
at Tennessee											
at Alabama											
South Carolina											
Mississippi State											
at Ole Miss											
at Arkansas											
Alabama											
Florida											
at Miss. State											
Vanderbilt											
at Georgia											
Auburn											
SEC Tournament											

### Eddie Ludwig's Career Stats

YEAR	GP-GS	MIN/AVG	FG-FGA	PCT.	3FG-FGA	PCT.	FT-FTA	PCT.	REB.-AVG	PF-FD	AST	TO	BLK	STL	PTS-AVG.
09-10	30-1	383/12.8	22-64	.344	0-8	.000	26-30	.867	74-2.5	47-0	19	19	3	14	70-2.3
10-11															
<b>Totas</b>	<b>30-1</b>	<b>383/12.8</b>	<b>22-64</b>	<b>.344</b>	<b>0-8</b>	<b>.000</b>	<b>26-30</b>	<b>.867</b>	<b>24-2.5</b>	<b>47-0</b>	<b>19</b>	<b>19</b>	<b>3</b>	<b>14</b>	<b>70-2.3</b>



# Dennis Harris

Forward • 6-11 \* 190 \* Sophomore \* 1L \* Jonesboro, Ga. (Mundy's Mills HS)

# 15

### Top Performances

**Points**  
 Season:  
 Career: 12, vs. Alabama, 1/19/10

**Rebounds**  
 Season:  
 Career: 8, twice

**Field Goals Made**  
 Season:  
 Career: 5, three times

**3 PT FG Made**  
 Season:  
 Career: 2, vs. Miss. State, 2/20/10

**Free Throws Made**  
 Season:  
 Career: 3, vs. ULM, 11/13/09

**Assists**  
 Season:  
 Career: 4, vs. Western Ky, 11/17/09

**Blocks**  
 Season:  
 Career: 2, twice

**Steals**  
 Season:  
 Career: 2, vs. Miss. State, 2/20/10

**Minutes Played**  
 Season:  
 Career: 29, vs. Western Ky., 11/17/09

### Top Career Scoring Games

1. 12 vs. Alabama, 1/9/10
2. 10 at Auburn, 2/27/10
2. 10 vs. Mississippi State, 2/20/10
2. 10 at Vanderbilt, 2/13/10
2. 10 vs. Indiana State, 11/16/09
6. 9 vs. Western Kentucky, 11/17/09
6. 9 vs. ULM, 11/13/09
8. 8 at Alabama, 1/27/10
9. 7 vs. McNeese, 1/4/10
10. 6 three times

### Sophomore Season (2010-11)

#### Harris' Game-by-Game Statistics

2010-11	MIN	FG	3FG	FT	REB	PF/D	A	TO	BLK	STL	PTS
Northwestern State											
Nicholls											
Tennessee-Martin											
Memphis (Tupelo)											
Centenary											
at South Alabama											
Houston											
Central Michigan											
Coastal Carolina											
McNeese State											
Wichita St. (Sport)											
North Texas											
Southern											
at Rice											
at Virginia											
at Auburn											
Arkansas											
at Kentucky											
Ole Miss											
at Tennessee											
at Alabama											
South Carolina											
Mississippi State											
at Ole Miss											
at Arkansas											
Alabama											
Florida											
at Miss. State											
Vanderbilt											
at Georgia											
Auburn											
SEC Tournament											

### Dennis Harris' Career Stats

YEAR	GP-GS	MIN/AVG	FG-FGA	PCT.	3FG-FGA	PCT.	FT-FTA	PCT.	REB.-AVG	PF-FD	AST	TO	BLK	STL	PTS-AVG.
09-10	29-9	415/14.3	56-111	.505	5-16	.313	17-32	.531	91-3.1	64-1	14	19	14	8	134-4.6
<b>Totals</b>	<b>29-9</b>	<b>415/14.3</b>	<b>56-111</b>	<b>.505</b>	<b>5-16</b>	<b>.313</b>	<b>17-32</b>	<b>.531</b>	<b>91-3.1</b>	<b>64-1</b>	<b>14</b>	<b>19</b>	<b>14</b>	<b>8</b>	<b>134-4.6</b>





# Storm Warren

Forward \* 6-7 \* 230 \* Junior \* 2L \* Monroe, La. (Richwood HS)

# 24

### Top Performances

**Points**  
 Season: \_\_\_\_\_  
 Career: 21, twice

**Rebounds**  
 Season: \_\_\_\_\_  
 Career: 16, twice

**Field Goals Made**  
 Season: \_\_\_\_\_  
 Career: 9, twice

**3 PT FG Made**  
 Season: \_\_\_\_\_  
 Career: \_\_\_\_\_

**Free Throws Made**  
 Season: \_\_\_\_\_  
 Career: 9, twice

**Assists**  
 Season: \_\_\_\_\_  
 Career: 4, vs. ULM, 11/13/09

**Blocks**  
 Season: \_\_\_\_\_  
 Career: 4, twice

**Steals**  
 Season: \_\_\_\_\_  
 Career: 3, twice

**Minutes Played**  
 Season: \_\_\_\_\_  
 Career: 39, vs. UL-Lafayette, 12/1/09

### Top Career Scoring Games

1. 21 at Utah, 1/2/10
1. 21 vs. Northwestern State, 12/12/09
3. 20 vs. Western Kentucky, 11/17/09
4. 19 at South Carolina, 1/13/10
5. 18 vs. Tennessee (SECT), 3/11/10
5. 18 vs. UL-Lafayette, 12/1/09
7. 17 vs. Auburn, 1/20/10
8. 15 vs. UConn, 11/25/09
8. 15 vs. ULM, 11/13/09
10. 14 four times

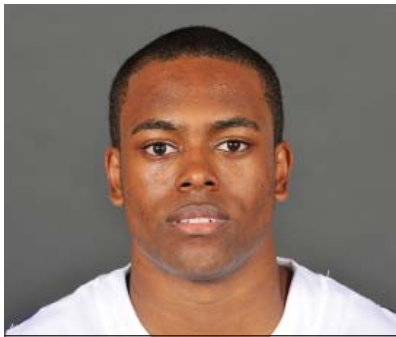
### Junior Season (2010-11)

#### Warren's Game-by-Game Statistics

2010-11 OPPONENT	MIN	FG	3FG	FT	REB	PF/D	A	TO	BLK	STL	PTS
Northwestern State											
Nicholls											
Tennessee-Martin											
Memphis (Tupelo)											
Centenary											
at South Alabama											
Houston											
Central Michigan											
Coastal Carolina											
McNeese State											
Wichita St. (Sport)											
North Texas											
Southern											
at Rice											
at Virginia											
at Auburn											
Arkansas											
at Kentucky											
Ole Miss											
at Tennessee											
at Alabama											
South Carolina											
Mississippi State											
at Ole Miss											
at Arkansas											
Alabama											
Florida											
at Miss. State											
Vanderbilt											
at Georgia											
Auburn											
SEC Tournament											

### Storm Warren's Career Stats

YEAR	GP-GS	MIN/AVG	FG-FGA	PCT.	3FG-FGA	PCT.	FT-FTA	PCT.	REB.-AVG	PF-FD	AST	TO	BLK	STL	PTS-AVG.
08-09	30-0	224-7.5	21-49	.429	0-0	.000	19-39	.487	53-1.8	32-1	6	9	15	12	61-2.0
09-10	31-31	827-26.7	141-263	.536	0-0	.000	84-123	.683	223-7.2	104-5	13	46	44	33	366-11.8
10-11															
<b>Totals</b>	<b>61-31</b>	<b>1051-17.2</b>	<b>162-312</b>	<b>.519</b>	<b>0-0</b>	<b>.000</b>	<b>103-162</b>	<b>.636</b>	<b>276-4.5</b>	<b>136-6</b>	<b>19</b>	<b>55</b>	<b>59</b>	<b>45</b>	<b>427-7.0</b>



# Daron Populist

Guard \* 5-10 \* 170 \* Sophomore \* 1L \* Slidell, La. (Salmen HS)

# 25

### Top Performances

#### Points

Season:

Career: 8, vs. Arkansas, 2/24/10

#### Rebounds

Season:

Career: 2, twice

#### Field Goals Made

Season:

Career: 2, vs. Arkansas, 2/24/10

#### 3 PT FG Made

Season:

Career: 2, vs. Arkansas, 2/24/10

#### Free Throws Made

Season:

Career: 2, vs. Arkansas, 2/24/10

#### Assists

Season:

Career: 2, twice

#### Blocks

Season:

Career:

#### Steals

Season:

Career: 1, vs. Georgia, 3/6/10

#### Minutes Played

Season:

Career: 23, twice

### Top Career Scoring Games

1. 8 vs. Arkansas, 2/24/10
2. 4 at Mississippi State, 1/30/10
3. 3 vs. Georgia, 3/6/10
3. 3 vs. Tennessee, 2/4/10
5. 2 at Arkansas, 2/10/10

### Sophomore Season (2010-11)

#### Populist's Game-by-Game Statistics

##### 2009-10

OPPONENT	MIN	FG	3FG	FT	REB	PF/D	A	TO	BLK	STL	PTS
Northwestern State											
Nicholls											
Tennessee-Martin											
Memphis (Tupelo)											
Centenary											
at South Alabama											
Houston											
Central Michigan											
Coastal Carolina											
McNeese State											
Wichita St. (S'port)											
North Texas											
Southern											
at Rice											
at Virginia											
at Auburn											
Arkansas											
at Kentucky											
Ole Miss											
at Tennessee											
at Alabama											
South Carolina											
Mississippi State											
at Ole Miss											
at Arkansas											
Alabama											
Florida											
at Miss. State											
Vanderbilt											
at Georgia											
Auburn											
SEC Tournament											

### Daron Populist's Career Stats

YEAR	GP-GS	MIN/AVG	FG-FGA	PCT.	3FG-FGA	PCT.	FT-FTA	PCT.	REB.-AVG	PF-FO	AST	TO	BLK	STL	PTS-AVG.
09-10	16-0	156-9.8	6-21	.286	5-16	.313	3-4	.750	8-0.5	7-0	9	9	0	1	20-1.3
10-11															
Totals	16-0	156-9.8	6-21	.286	5-16	.313	3-4	.750	8-0.5	7-0	9	9	0	1	20-1.3



# Aaron Dotson

Guard \* 6-4 \* 205 \* Sophomore \* 1 L \* Seattle, Wash. (Rainier Beach HS)

# 45

### Top Performances

#### Points

Season: \_\_\_\_\_  
 Career: 11, vs. Wash. St., 12/22/09

#### Rebounds

Season: \_\_\_\_\_  
 Career: 5, vs. Arizona St., 11/27/09

#### Field Goals Made

Season: \_\_\_\_\_  
 Career: 4, three times

#### 3 PT FG Made

Season: \_\_\_\_\_  
 Career: 2, vs. McNeese, 1/4/10

#### Free Throws Made

Season: \_\_\_\_\_  
 Career: 3, twice

#### Assists

Season: \_\_\_\_\_  
 Career: 5, vs. McNeese, 1/4/10

#### Blocks

Season: \_\_\_\_\_  
 Career: 2, twice

#### Steals

Season: \_\_\_\_\_  
 Career: 1, 10 times

#### Minutes Played

Season: \_\_\_\_\_  
 Career: 38, vs. Wash. St., 12/22/09

### Top Career Scoring Games

1. 11 vs. Washington State, 12/22/09
2. 10 vs. McNeese, 1/4/10
2. 10 vs. Rice, 12/19/09
4. 7 at Ole Miss, 3/4/10
5. 6 vs. Tennessee, 2/4/10
5. 6 vs. ULM, 11/13/09
7. 5 vs. Utah, 1/2/10
7. 5 vs. Southeastern, 12/14/09
7. 5 vs. Arizona State, 11/27/09
10. 3 vs. Alabama, 1/19/10

### Sophomore Season (2010-11)

#### Dotson's Game-by-Game Statistics

##### 2009-10

OPPONENT	MIN	FG	3FG	FT	REB	PF/D	A	TO	BLK	STL	PTS
Northwestern State											
Nicholls											
Tennessee-Martin											
Memphis (Tupelo)											
Centenary											
at South Alabama											
Houston											
Central Michigan											
Coastal Carolina											
McNeese State											
Wichita St. (S'port)											
North Texas											
Southern											
at Rice											
at Virginia											
at Auburn											
Arkansas											
at Kentucky											
Ole Miss											
at Tennessee											
at Alabama											
South Carolina											
Mississippi State											
at Ole Miss											
at Arkansas											
Alabama											
Florida											
at Miss. State											
Vanderbilt											
at Georgia											
Auburn											
SEC Tournament											

### Aaron Dotson's Career Stats

YEAR	GP-GS	MIN/AVG	FG-FGA	PCT.	3FG-FGA	PCT.	FT-FTA	PCT.	REB.-AVG	PF-FO	AST	TO	BLK	STL	PTS-AVG.
09-10	29-17	539-18.6	32-109	.294	7-46	.152	23-43	.535	48-1.7	61-3	29	33	12	12	93-3.2
10-11															
<b>Totals</b>	<b>29-17</b>	<b>539-18.6</b>	<b>32-109</b>	<b>.294</b>	<b>7-46</b>	<b>.152</b>	<b>23-43</b>	<b>.535</b>	<b>48-1.7</b>	<b>61-3</b>	<b>29</b>	<b>33</b>	<b>12</b>	<b>12</b>	<b>93-3.2</b>