



LSU XC Invitational

University Club

Invited Teams

Email andypdl@lsu.edu if interested in competing at any LSU cross country or indoor meets.

Important Dates & Deadlines

All times listed are Central Time (CST)

Tuesday, September 12th	3:00pm	Deadline to enter LSU XC Invitational -Entries are unlimited in number of each race -Entries are completed on www.directathletics.com
Friday, September 15th	7:00am	Packet pickup available at the coach's hospitality -Light breakfast available
	7:45am	National Anthem 30min before first race
	8:15am	Men's 6k
	9:00am	Women's 5k

Meet Information

Address of the course:

University Club of Baton Rouge
15333 Memorial Tower Dr.
Baton Rouge, LA 70810

Awards: Shirt for top 15 individual finishers, pick up at the end of the finish chute.

Course Description: The course is a relatively flat course with a few sections that have rolling hills that are common on golf courses. The course is run both in the fairway and short grass rough adjacent to the fairways. The course has good footing throughout with predominantly wide sweeping turns.

Entry Fee: \$250 per team/gender (\$500 for both men and women if combined)
\$5 unattached athletes. Email andypdl@lsu.edu for entry.

Locker Rooms: There are no locker rooms, showers, or dressing rooms onsite at University Club

Parking: There will be multiple shuttles running back and forth from parking to the course
Public parking will be at:

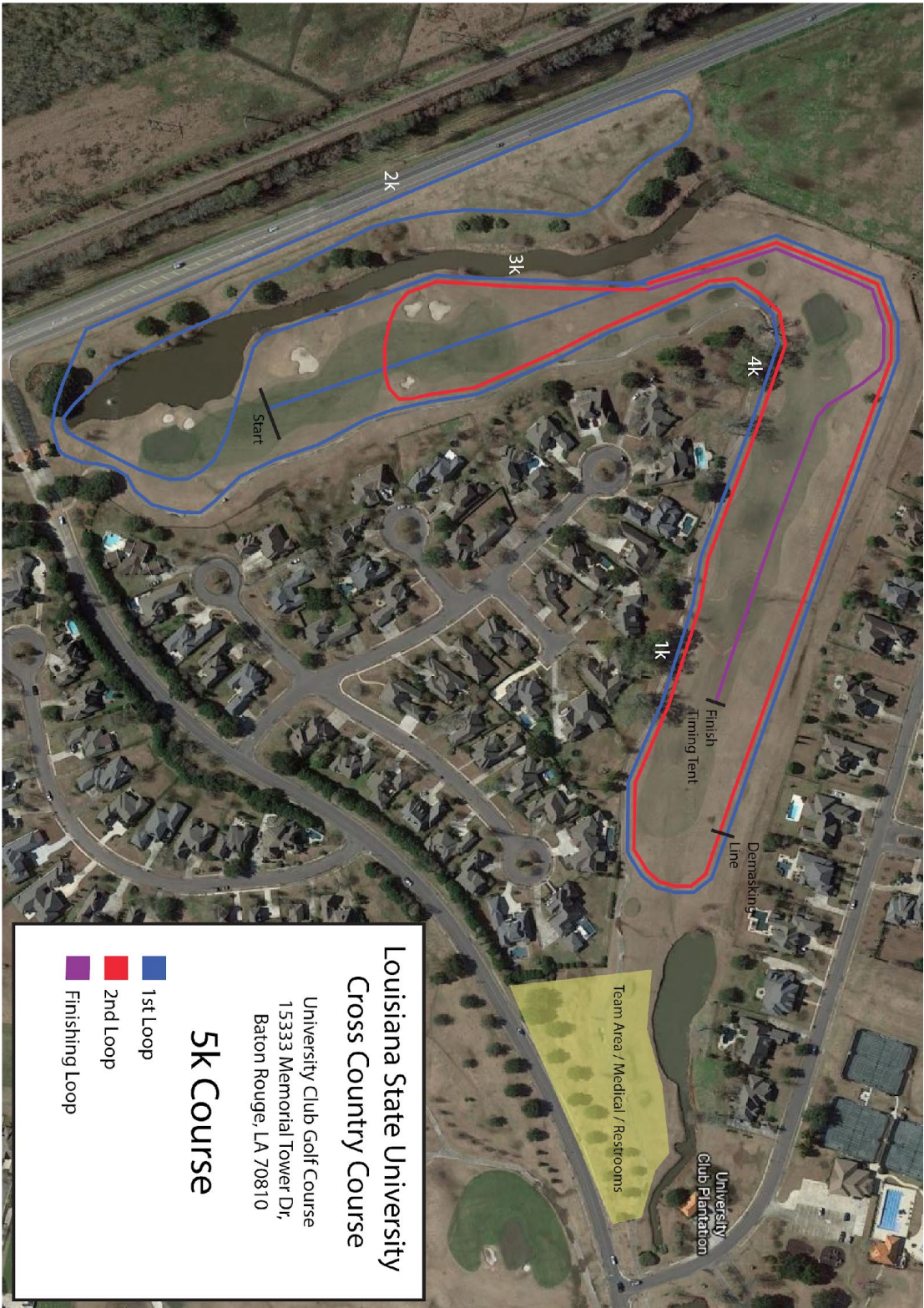
L'Auberge Casino and Hotel
777 L'Auberge Ave
Baton Rouge, LA 70820

Results: Results will be posted at <https://lsusports.net/meetinfo/>

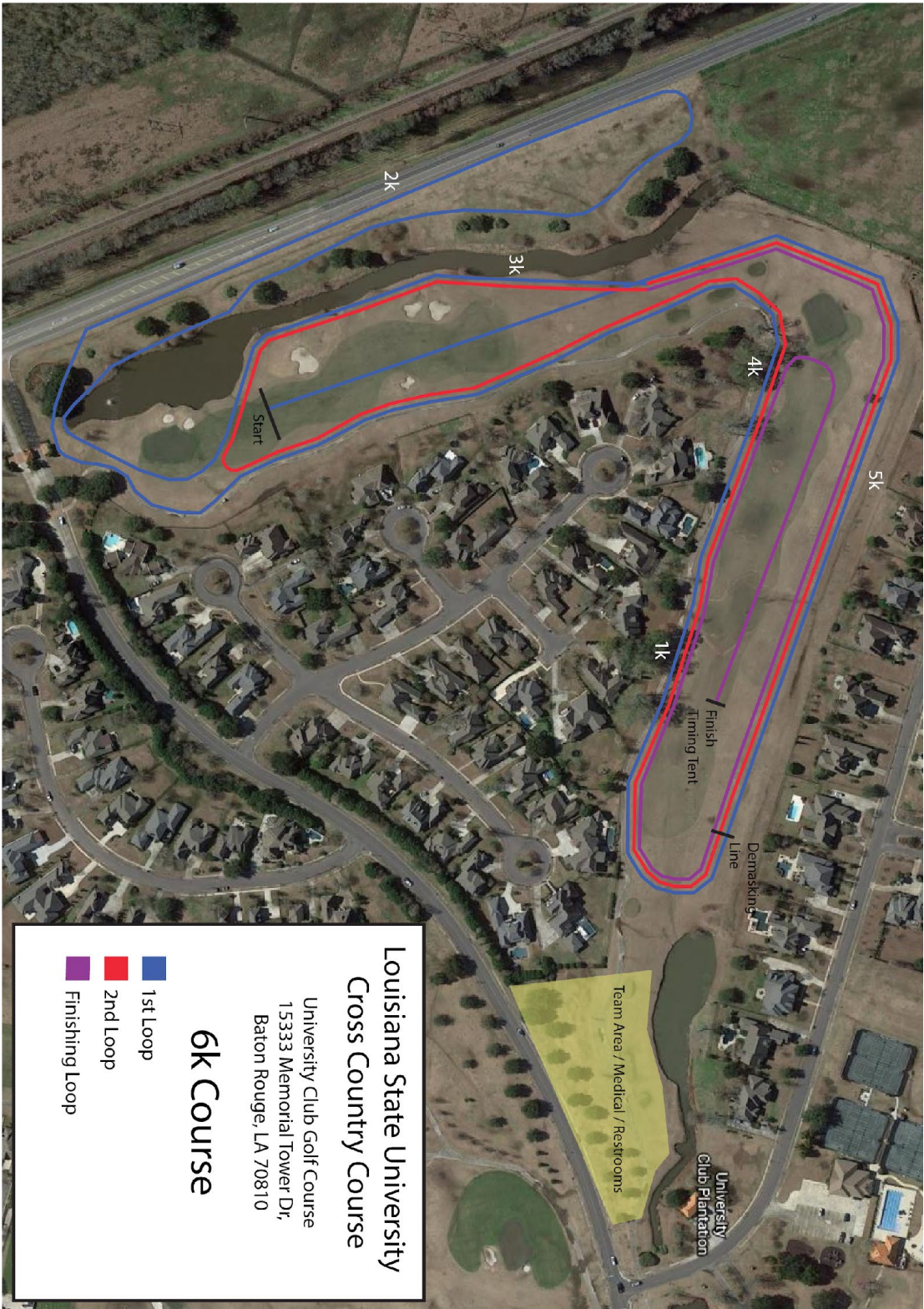
Starting Box Assignments: At packet pick-up each team will have been assigned to a starting box that will be painted on the starting line.

Team Set-up Area: There will be a designated area where teams can set up tarps, tents, chairs, etc. The team set up area is within 100m of the finish line. The start line is approximately 400m from the team tent area. Portable restroom facilities will be available in the immediate vicinity of the team area.

WOMEN'S 5K MAP

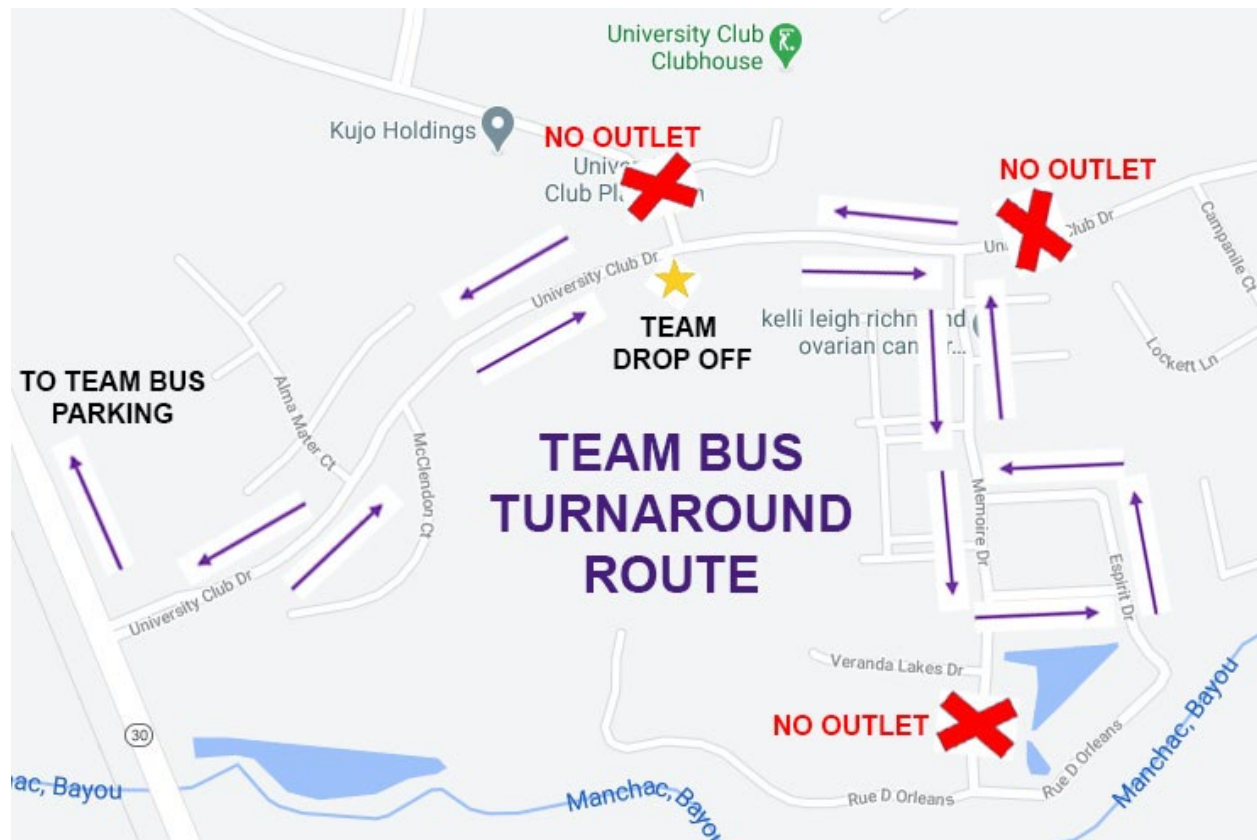


MEN'S 6K MAP



PARKING MAP & BUS FLOW TRAFFIC

1. Head East: On University Club Drive.
2. Stop: On University Club Drive just before Memorial Tower Drive.
3. Unload passengers.
4. Head East: Continue on University Club Drive.
5. Turn Right: On Memoire Drive.
6. Turn Left: On Rue Dauphine.
7. Turn Left: On Espirit Drive.
8. Turn Left: On Lac D or Ave.
9. Turn Right: On Memoire Drive.
10. Turn Left: On University Club Drive.
11. Turn Right: On Hwy 30 towards team parking at L'Auberge Hotel.



****TEAM BUSES WILL DROP OFF AT COURSE AND THEN PROCEED TO PARKING AREA AT L'AUBERGE HOTEL:**

L'Auberge Casino and Hotel
777 L'Auberge Ave
Baton Rouge, LA 70820

Team Drop Off Directions:

From Baton Rouge Metropolitan Airport

Take I-110 South to exit 1A for Government Street
Turn Right onto Government Street
Turn Left onto St. Phillips Street
Continue onto LA-30/Nicholson Drive for approximately 9.5 miles
Turn Left onto University Club Drive
Team Drop off at Corner of University Club Drive and Memorial Tower Drive

From East on I-12W:

Take Exit 1A to merge onto I-10E towards New Orleans
Take Exit 162A for Bluebonnet Blvd Toward LA-1248
Keep right at the fork and turn onto Bluebonnet Blvd for approximately 2.5 miles
Turn left onto LA-30/Nicholson Drive for approximately 1.5 miles
Turn Left onto University Club Drive
Team Drop off at Corner of University Club Drive and Memorial Tower Drive

From West on I-10E:

Take Exit 155A for LA-30/Nicholson Dr/Highland Rd
Keep right at the fork and continue toward Terrace Ave
Keep left and merge onto Terrace Ave following signs for LA-30/Nicholson Drive
Continue onto LA-30/Nicholson Drive for approximately 9.5 miles
Turn Left onto University Club Drive
Team Drop off at Corner of University Club Drive and Memorial Tower Drive