



EVENT SCHEDULE

7:00am Packet pick up begins at coaches' hospitality

-Light breakfast available

7:45am National anthem 30min before first race

8:15am Men's 6k

9:00am Women's 5k

Participating Teams: Email andypdl@lsu.edu for confirmation into the meet.

Entries: **Entries are due by Tuesday, September 20th by NOON.** Entries are unlimited in number in each race. All entries are completed online through www.directathletics.com

Entry Fee: \$150 per team/gender (\$300 for both men and women if combined)
\$5 unattached athletes. Email andypdl@lsu.edu for entry.

Awards: Shirt for top 15 individual finishers, pick up at the end of the finish chute.

Parking: Public parking will be at: **L'Auberge Casino and Hotel**
777 L'Auberge Ave
Baton Rouge, LA 70820

*There will be multiple shuttles running back and forth from parking to the course

Address of the course:

University Club of Baton Rouge
15333 Memorial Tower Dr.
Baton Rouge, LA 70810

Course Description: The course is a relatively flat course with a few sections that have rolling hills that are common on golf courses. The course is run both in the fairway and short grass rough adjacent to the fairways. The course has good footing throughout with predominantly wide sweeping turns.

Team Drop Off Directions:

From Baton Rouge Metropolitan Airport

Take I-110 South to exit 1A for Government Street

Turn Right onto Government Street

Turn Left onto St. Phillips Street

Continue onto LA-30/Nicholson Drive for approximately 9.5 miles

Turn Left onto University Club Drive

Team Drop off at Corner of University Club Drive and Memorial Tower Drive

From East on I-12W:

Take Exit 1A to merge onto I-10E towards New Orleans
Take Exit 162A for Bluebonnet Blvd Toward LA-1248
Keep right at the fork and turn onto Bluebonnet Blvd for approximately 2.5 miles
Turn left onto LA-30/Nicholson Drive for approximately 1.5 miles
Turn Left onto University Club Drive
Team Drop off at Corner of University Club Drive and Memorial Tower Drive

From West on I-10E:

Take Exit 155A for LA-30/Nicholson Dr/Highland Rd
Keep right at the fork and continue toward Terrace Ave
Keep left and merge onto Terrace Ave following signs for LA-30/Nicholson Drive
Continue onto LA-30/Nicholson Drive for approximately 9.5 miles
Turn Left onto University Club Drive
Team Drop off at Corner of University Club Drive and Memorial Tower Drive

****TEAM BUSES WILL DROP OFF AT COURSE AND THEN PROCEED TO PARKING AREA AT L'AUBERGE HOTEL:**

L'Auberge Casino and Hotel
777 L'Auberge Ave
Baton Rouge, LA 70820

Starting Box Assignments: At packet pick-up each team will have been assigned to a starting box that will be painted on the starting line.

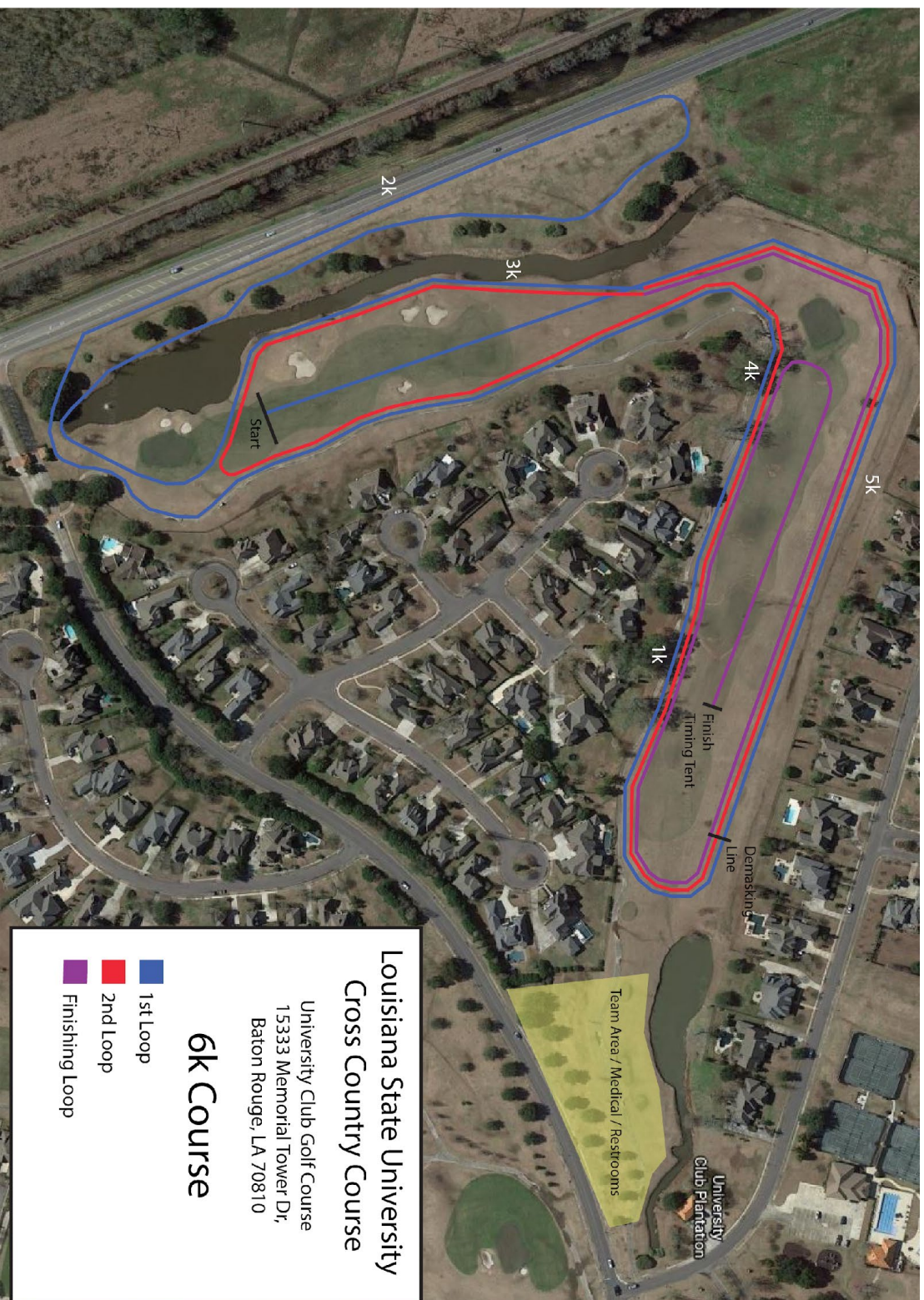
Team Set-up Area: There will be a designated area where teams can set up tarps, tents, chairs, etc. The team set up area is within 100m of the finish line. The start line is approximately 400m from the team tent area. Portable restroom facilities will be available in the immediate vicinity of the team area.

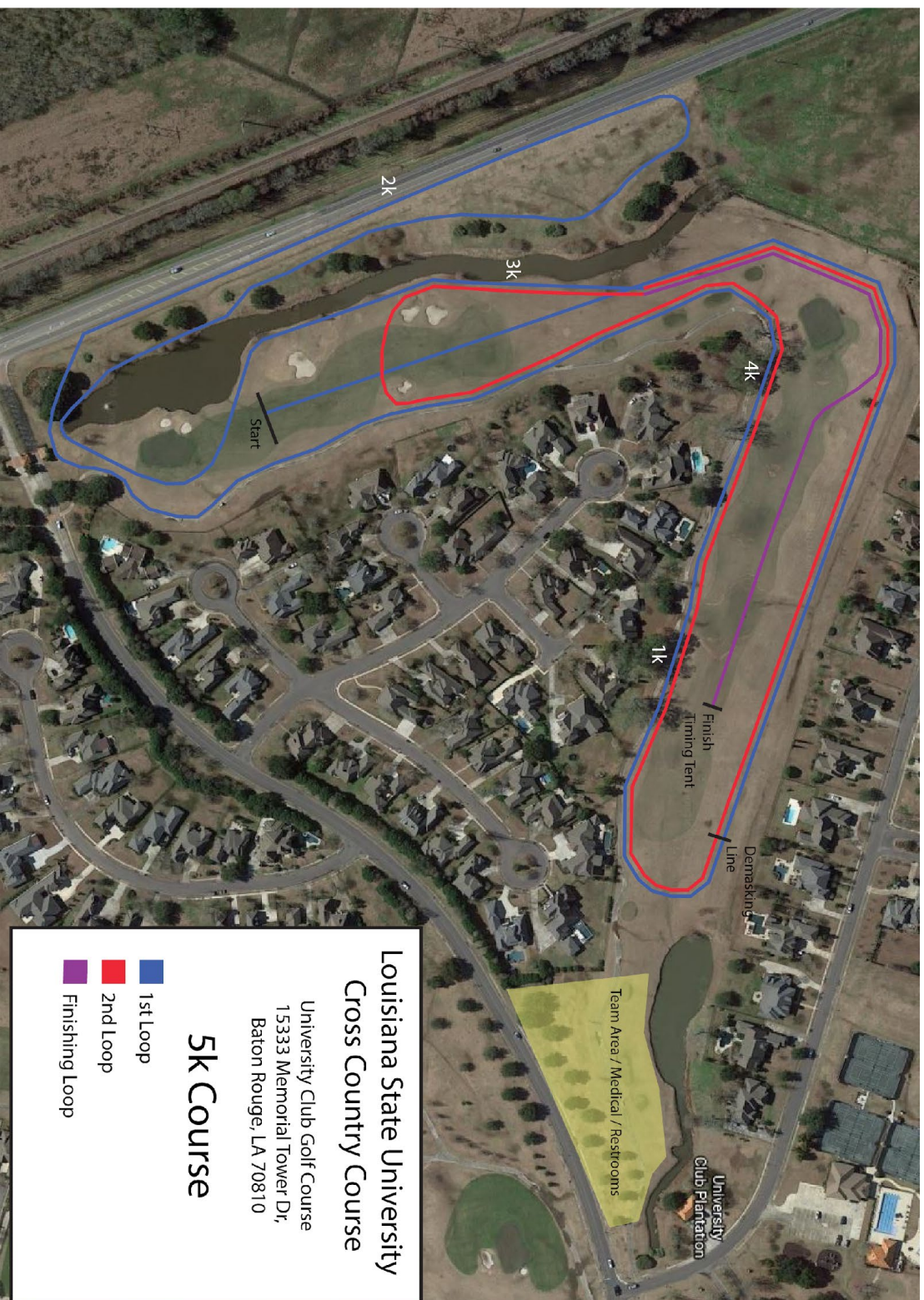
COVID-19 Protocols: Subject to change based on the direction from state and national health offices.

Locker Rooms: There are no locker rooms, showers, or dressing rooms onsite at University Club.

Results: Results will be posted with live updates and final results on <http://pttiming.com/events> and Twitter: @pttiming

Contract Person: Andy Ponce de Leon, andypdl@lsu.edu, 225-326-0983





BUS INFORMATION

1. Head East: On University Club Drive.
2. Stop: On University Club Drive just before Memorial Tower Drive.
3. Unload passengers.
4. Head East: Continue on University Club Drive.
5. Turn Right: On Memoire Drive.
6. Turn Left: On Rue Dauphine.
7. Turn Left: On Espirit Drive.
8. Turn Left: On Lac D or Ave.
9. Turn Right: On Memoire Drive.
10. Turn Left: On University Club Drive.
11. Turn Right: On Hwy 30 towards team parking at L'Auberge Hotel.

