



2016

MEN'S TENNIS MEDIA GUIDE



Contents

LSUsports.net
f LSUsports.net/fancage

CREDITS

EDITORS: Ellen Farmer, Brandon Berrio, Jake Terry
LAYOUT & DESIGN: Mallory Bourgeois, Jason Feirman
PHOTOGRAPHY: Steve Franz, Chris Parent, Kyle Zedaker,
Madeline VeZain
© Copyright Louisiana State University

2	Table of Contents
4	2016 Schedule
5	Quick Facts/Roster
6	Television Roster
7	Head Coach Jeff Brown
9	Assistant Coach Danny Bryan
10	Support Staff
11	Player Bios
19	2015 Records and Rankings
20	2015 Final Stats
21	2015 Match-by-Match Results
24	LSU Tennis Complex
26	Tigers in the Pros
28	Coaching Records
29	Athlete Honors

30	SEC and NCAA History
32	National Rankings
33	Record vs. Opponents
34	Year-by-Year Finishes
36	Year-by-Year Results
43	LSU Record Book
44	All-Americans
46	College Grand Slams
48	Letterwinners





2016 Schedule

JANUARY

8-10	FGC Invitational	Fort Myers, Fla.	TBA
23-24	ITA Kickoff	Tampa, Fla.	TBA
31	Rice	Houston, Texas	12 p.m.

FEBRUARY

19	Drake	Baton Rouge, La.	3 p.m.
19	Nicholls	Baton Rouge, La.	7 p.m.
26	North Florida	Baton Rouge, La.	5 p.m.
28	Stetson	Baton Rouge, La.	12 p.m.
28	Lamar	Baton Rouge, La.	5 p.m.

MARCH

2	Tulane	New Orleans, La.	4 p.m.
4	Florida *	Baton Rouge, La.	5:30 p.m.
6	Auburn *	Baton Rouge, La.	1 p.m.
6	Alcorn St.	Baton Rouge, La.	5 p.m.
11	Ole Miss*	Oxford, Miss.	5 p.m.
13	Arkansas*	Fayetteville, Ark.	1 p.m.
18	Alabama *	Baton Rouge, La.	5:30 p.m.
20	Mississippi St. *	Baton Rouge, La.	1 p.m.
27	Vanderbilt*	Nashville, Tenn.	12 p.m.
29	Brown	Baton Rouge, La.	3 p.m.

APRIL

1	South Carolina *	Baton Rouge, La.	5:30 p.m.
3	Georgia *	Baton Rouge, La.	1 p.m.
3	New Orleans	Baton Rouge, La.	6 p.m.
8	Tennessee *	Knocksville, Tenn.	1 p.m.
15	Texas AGM	College Station, Texas	6 p.m.
20-21	SEC Championship	Columbia, S.C.	TBA

MAY

13	NCAA 1st/2nd Rounds	Campus Sites TBD	TBA
19-24	NCAA Team Championships	Tulsa, Okla	TBA
25-30	NCAA Singles/Doubles Champ.	Tulsa, Okla	TBA

Bold - Denotes home matches; Admission to all home events are free

* - Denotes SEC Match

Matches are central and subject to change

Quick Facts

UNIVERSITY

Location: Baton Rouge
Founded: 1860
Enrollment: 30,451
Team Name: Tigers
University President: F. King Alexander
Colors: Purple and Gold
Conference: Southeastern
Athletics Website: LSUsports.net
Tennis Facility: LSU Tennis Complex
Faculty Athletics Representative: Dr. Bill Demastes
Athletic Director: Joe Alleva

TEAM INFORMATION

2015 Overall Record: 18-9
2015 SEC Record: 6-6
2015 NCAA Tournament Finish: Second Round
Final 2015 Ranking: No. 30 (ITA)
2016 Letterwinners returning/lost: 6/4
2016 Newcomers: 3

COACHING STAFF

Head Coach: Jeff Brown (LSU, 1989)
18th Season, Record at LSU: 286-177
@LSUCoachJBrown
Assistant Coach: Danny Bryan (LSU, 2008)
8th Season
@LSUDannyBryan

SPORTS INFORMATION

Assistant AD/Communications: Michael Bonnette
Men's Tennis Primary Contact: Ellen Farmer
Email: efarme3@lsu.edu
Office Phone: 225-578-4758
Communications Office: 225-578-8226
Communications Mailing Address:
LSU Athletics Administration Building
Baton Rouge, LA 70803

SOCIAL MEDIA

@LSUTennis on Twitter and Instagram
Facebook.com/lsutennis



Roster

NAME	HT.	CL.	HOMETOWN (HIGH SCHOOL/PREVIOUS SCHOOL)
Cameron Andry	5-11	Fr.	Baton Rouge, La. (St. Michael the Archangel HS)
Boris Arias	6-1	Sr.	La Paz, Bolivia (Colesol Saint Germain)
Justin Butsch	5-9	Jr.	Miami, Fla. (Kaplan College Prep)
Gabor Csonka	5-10	So.	Niregyhaza, Hungary (Zrinyi Ilona/Ohio Dominican)
Jordan Daigle	6-2	Jr.	Lafayette, La. (Laurel Springs HS/Virginia)
Simon Freund	5-10	So.	Stockholm, Sweden (Stockholms Idrottsgymnasium)
Andrew Korinek	5-11	Sr.	Mansfield, Texas (Mansfield HS/Texas)
Nikola Samardzic	6-1	Fr.	New York City, N.Y. (Edison Academics)
Tam Trinh	5-9	Jr.	Dallas, Texas (J.J. Pearce HS)

2016 MEN'S TENNIS

ROSTER



Cameron Andry

5-11, Fr.-HS
Baton Rouge, La



Boris Arias

6-1, Sr.-3L
La Paz, Bolivia



Justin Butsch

5-9, Jr.-2L
Miami, Fla.



Gabor Csonka

5-10, So.-TR
Nyiregyhaza, Hungary



Jordan Daigle

6-2, Jr.-1L
Lafayette, La.



Simon Freund

5-10, So.-1L
Stockholm, Sweden



Andrew Korinek

5-11, Sr.-2L
Mansfield, Texas



Nikola Samardzic

6-1, Fr.-HS
New York City, N.Y.



Tam Trinh

5-9, Sr.-3L
Dallas, Texas



Jeff Brown

HEAD COACH

YEAR AT LSU: 19TH

BIRTHDATE: NOV. 15, 1966

BIRTHPLACE: DUBUQUE, IOWA

📧 @LSUCoachJBrown

Jeff Brown has been a part of LSU tennis for almost half his life, playing a major role in nearly all of the most successful teams in the program's history. Now entering into his 19th season as the Tigers' head coach, Brown has done more than just maintain the standards of excellence that have characterized LSU tennis since his days as a player here. He has raised the bar substantially.

Brown took the reins of the program in 1998 after serving as an assistant to Jerry Simmons for three seasons. He was an All-American doubles player for LSU in 1988 and spent five years on the professional circuit. Brown led the Tigers to back-to-back SEC Championships in 1998 and 1999, becoming the first person in league history to do so in his first two seasons as head coach. The Tigers also won the SEC Tournament both years.

He has since proven those feats were more than just beginner's luck. Brown quickly earned respect among his peers due to his lengthy list of achievements. Brown has taken his teams to the NCAA Tournament in 15 out of 17 years, and earned Louisiana Coach of the Year honors in 1998, 1999, 2001, 2002, 2005, 2007 and 2013. He has coached 16 All-Americans in his tenure, and after young teams fell out of the top 20 in 2002 and 2003, he brought the team back to the national spotlight in 2004. In 2005, Brown helped the Tigers return to the top 10 for the first time since 1998 with a 21-9 overall record and a tie for third place in the SEC.

With Brown at the helm, the Tigers have finished in the top 10 three times during

his tenure. But he's not ready to stop there. More than anyone, Brown himself would like to get back to the top of the conference because he remembers the thrill of being a part of championship teams.

"The years when we won the SEC and got to the Final Fours set the standard that we want to get back to," he said. "When you have a couple of years where you don't make it, you really appreciate it, and you're hungry for more."

Brown has put his Tigers in position to succeed on and off the court. Brown helped setup "Duel Under the Oaks" on October 29, 2006, a charity event held on LSU's campus that helped raise more than \$400,000 for LSU Health Sciences Center students impacted by the hurricanes that ripped through Louisiana in 2005. The event included a youth tennis clinic, tennis exhibitions with LSU tennis players and local celebrities and the main event of an exhibition match with former tennis pros Pete Sampras against Todd Martin at the Pete Maravich Assembly Center. The event was such a success that LSU hosted "Dual Under the Oaks II" in December 2008. During Brown's LSU tenure, the Tigers have had 3 SEC Scholar Athlete's of the Year, 13 Academic All-Americans and 63 SEC Honor Roll members.

The Tigers were honored by the NCAA in 2008 for their Academic Progress Rate score. The Tigers scored a perfect APR of 1000 in the report by the NCAA. The LSU men's tennis team scored the highest among LSU sports for the third year in a row. The NCAA recognized college sports teams from around the country that

achieved an APR score in the top 10 percent of all squads in their respective sports.

The LSU men's tennis team is one of only 10 sports teams out of 236 squads in the entire Southeastern Conference that were recognized for academic achievement by the NCAA, and it is the only men's tennis team in the SEC to achieve the honor. In 2014, the Tigers received their fourth NCAA Public Recognition Award for their exceptional work in the classroom as part of the NCAA's Academic Performance Program. They also earned the highest team GPA at LSU for the 2015 season.

When Brown took over the program in 1998, he was already well acquainted with the demands of being successful in college tennis. He enjoyed tremendous success as a player at LSU from 1985-88, as evidenced by his two All-SEC awards. He joined the Tiger tennis elite in his senior season when he eclipsed the 100-career victory mark. That same year he captained LSU's only NCAA finals team. He still has the fifth-most wins of any player in LSU history. Brown helped lead the Tigers to an 85-35 record as an assistant coach from 1994-97. LSU finished in the top-10 three of those four years.

"To be a part of LSU from so many angles, first as a player, then as an assistant and now as a head coach has been wonderful," Brown said. "The tradition that has been here is that we're competing for championships and we're going to fight you to the end. That's the thing that's always been known about LSU in most sports and particularly tennis."

"LSU's overall sports excellence helps because our guys are around other people



Brown's LSU Coaching Records

YEAR	SCHOOL	RECORD	PCT.	SEC FINISH	FINAL RANK
1998	LSU	25-2	.926	1st	2nd
1999	LSU	20-7	.740	1st	4th
2000	LSU	20-6	.769	4th	12th
2001	LSU	16-8	.667	3rd	13th
2002	LSU	11-14	.440	11th	29th
2003	LSU	13-11	.542	5th (tie)	24th
2004	LSU	18-7	.720	3rd (tie)	13th
2005	LSU	21-9	.700	3rd (tie)	10th
2006	LSU	15-10	.600	3rd (tie)	25th
2007	LSU	18-7	.720	3rd (tie)	15th
2008	LSU	15-9	.625	6th	18th
2009	LSU	11-12	.478	8th	28th
2010	LSU	8-15	.347	5th	46th
2011	LSU	12-14	.461	7th (Tie)	34th
2012	LSU	15-11	.577	6th (Tie)	21st
2013	LSU	16-12	.571	10th (Tie)	22nd
2014	LSU	14-14	.500	13th	46th
2015	LSU	18-9	.653	7th	30th
TOTALS		285-177	.617		

who are used to winning. Athletes here run into each other often and it's almost like there's a silent competition amongst the sports. You are pulling for each other of course, but at the same time you're driven not to fall behind the other sports on campus."

"Jeff represents what the LSU tennis program is all about," said Hall of Fame coach Jerry Simmons, who coached Brown on the 1988 LSU team that reached the NCAA Tournament championship match. Brown was team captain that year, leading the Tigers to a 27-2 record. Three years earlier as a freshman, Brown won a crucial SEC match at No. 4 singles that enabled LSU to win the conference crown.

"I knew as a player that I probably wanted to be a coach," Brown said. "I could see that it was something that kept you young and kept you around young people. Everyone I came in contact with as a player has had some influence on me as a coach."

Brown came across quite a few tennis legends as a player. He earned his degree at LSU in 1989 while serving as an assistant coach, and then left Baton Rouge for the ATP tour. He won the doubles title at the Volvo International in 1990 and advanced to the round of 16 at the U.S. Open by beating the team of Pete Sampras and Jim Courier in the first round. Brown also advanced to the round of 16 at both the Australian Open and Wimbledon. His No. 47 international ranking in doubles is the third highest ranking ever for a former LSU player, behind only former Tiger Ken Skupski who was ranked No. 44 and Michael Venus who was ranked No. 42 in doubles.

Brown married the former Deborah Schaeffer of Colorado Springs, Colo., on Nov. 19, 1999. They have two young boys, Connor (11) and Cameron (9).



Brown with wife Debi and their two sons Connor (9) and Cameron (7).

Brown's Experience:

PLAYING EXPERIENCE

- LSU's Fifth All-Time Winningest Singles Player (100 Career Wins)
- 1988 Team Captain
- 1985 All-SEC Singles
- 1985 SEC No. 4 Singles Champion
- 1986 SEC No. 3 Doubles Champion
- 1988 SEC All-SEC Singles and Doubles
- 1988 NCAA Singles and Doubles Participant
- 1988 Doubles All-American
- Four-year Letterman (1985-88)

PROFESSIONAL CAREER

- 1990 Volvo International Doubles Champion
- 1990 U.S. Open Doubles Round of 16
- 1991 Volvo International Doubles Finalist
- 1991 Australian Open Doubles Round of 16
- 1991 Wimbledon Doubles Round of 16

COACHING HONORS

- 1998 SEC Co-Coach of the Year
- 1998 ITA Region III Coach of the Year
- 1998 Louisiana Coach of the Year
- 1999 College Tennis Magazine National

COACH OF THE YEAR

- 1999 Louisiana Coach of the Year
- 2001 Louisiana Coach of the Year
- 2002 Louisiana Coach of the Year
- 2005 Louisiana Coach of the Year
- 2007 Louisiana Coach of the Year
- 2013 Louisiana Coach of the Year

Danny Bryan

ASSISTANT COACH

YEAR AT LSU: 9TH

BIRTHDATE: DEC. 15, 1985

BIRTHPLACE: LAFAYETTE, LA.

📱 @LSUDannyBryan



Danny Bryan stepped onto the court as an assistant coach for LSU in 2009, but it was not the first time Bryan stepped onto the court for the Tigers. Bryan served as a volunteer coach in fall 2008 and was a four-year letterman for the Tigers from 2003-07.

As an assistant coach, Bryan is instrumental in one-on-one instruction, and at one of his first tournaments in his new position, Bryan coached former LSU standout Michael Venus in the final match at the D'Novo All-American Championships where Venus became the first Tiger to win the title in the history of the program.

With experience in three different facets of LSU tennis and almost a lifetime geared toward the game, Bryan helped guide the Tigers along with head coach Jeff Brown to another season in the national spotlight during his inaugural year. The team earned a No. 28 billing at the close of the 2009 season as well as an NCAA Tournament berth.

Bryan has been a mainstay at LSU for more than eight years now, but his journey toward LSU began long ago. Tennis runs through his veins, passed down through his father and three uncles that played collegiate tennis, as well as a grandfather that played on the pro circuit.

After cracking the starting lineup his freshman year, he served as a leader both on and off the court. Bryan served as a co-captain for the Tigers his junior and senior seasons, and the New Orleans native made an impact in Louisiana, the Southeastern Conference and the national rankings. Bryan earned First-Team All-Louisiana honors for three consecutive years. In 2007, he earned First-Team All-SEC honors and finished his senior season at No. 40 in the ITA singles rankings and No. 6 in doubles with partner Colt Gaston.

Bryan made an impact on the LSU record books as well. He sits tied at 14th in career singles wins at 84 with LSU greats Dan Kiernan, Gus Fernandez and Jason Hazely. His doubles campaign was no less impressive as he capped his senior season by winning the 2007 SEC Indoor Championships with partner Gaston and captured 110 career doubles win to earn Doubles All-America status.

The culmination of an impressive career on the courts as well as outstanding leadership ability earned Bryan the 2007 ITA National Arthur Ashe Jr. Leadership and Sportsmanship Award. Not only did he shine on the courts, his service work allowed him to shine

COACHING EXPERIENCE

YEARS	CAPACITY	UNIVERSITY
2008-present	Assistant Coach	LSU

COACHING HONORS

- 2013 ITA Southern Region Assistant Coach of the Year

PLAYING EXPERIENCE

- 2006-07 Team Captain
- 2007 ITA Doubles All-American
- 2007 First-Team All-SEC
- 2007 ITA National Arthur Ashe Jr. Leadership & Sportsmanship Award Winner
- 2007 First-Team All-Louisiana
- 2007 SEC Community Service Team
- 2007 LSU Male Volunteer of the Year
- 2007 SEC Indoors Doubles Champion
- 2006 Second-Team All-SEC
- 2006 SEC Good Works Team
- 2006 First-Team All-Louisiana
- 2005 SEC Good Works Team
- 2005 First-Team All-Louisiana
- Four-year letterman (2003-07)

in the community as well. From 2005-07 Bryan was named to the Southeastern Conference Community service team, and in 2007, his efforts earned him 2007 LSU Male Volunteer of the Year.

Bryan married former LSU gymnast Jade Jenkins on Jan. 2, 2010. They have one son, Parker (4).



SUPPORT STAFF



Eddie Nunez
Deputy Athletic Director



Kirstin Defusco
Academic Counselor



Emily Hairston
Strength &
Conditioning Coach



John Michael Busch
Manager



Sean Guilbeau
Manager



Gregory Suhor
Manager



Samantha Baker
Graduate Assistant
Student Trainer



Alison Horne
Athletic Training Student



Ellen Farmer
Sports Information Director



Jenna Hall
Director of Operations



Boris Arias

SENIOR • LA PAZ, BOLIVIA

JUNIOR SEASON (2014-15)

A consistent performer for the Tigers, Boris Arias showed he is a player to watch heading into his senior season ... Played the majority of his matches on court four ... Enjoyed a red-hot start as he had a streak of 35 consecutive games without a loss across both doubles and singles play between Jan. 31 and Feb. 7 ... Went on to earn a 25-10 singles record on the season ... Finished the season tied for the second most wins on the team ... Part of the No. 14 doubles team along with partner Jordan Daigle ... The duo earned six victories over teams ranked in the top fifty, including three wins in the top eight ... Finished with a 14-9 doubles record.

SOPHOMORE SEASON (2013-14)

Spent most of the season ranked in doubles with partner Chris Simpson ... Entered the first dual season rankings at No. 60 in doubles and moved as high as No. 20 during the season ... Picked up three ranked doubles wins with Simpson over pairs from Michigan, Liberty and George Washington ... Went 11-11 in singles and 13-10 in doubles during the dual season, while participating in all but two dual matches ... Spent most of the season on courts 2 and 3 in singles and court 1 in doubles ... Earned an 8-6 record in singles, while going 11-4 in doubles during tournament play ... Clinched the dual match against Southern Miss with a 6-2, 6-2 win on court 4 ... Reached the ITA Southern Regional doubles finals and 2013 SEC Fall Classic doubles quarterfinals with Simpson ... Went on a five-match win streak in doubles from February 8 to February 28 ... Went 21-10 in doubles with Simpson ... Earned his second varsity letter.

FRESHMAN SEASON (2012-13)

Went 9-6 in singles and 9-11 in doubles dual match play ... Appeared for the majority of the season on Courts 5 and 6 in singles and Court 3 in doubles ... Partnered with Olivier Borsos and Chris Simpson for the majority of the season ... Notched a 3-7 fall singles record and a 2-8 doubles mark ... Competed in the ITA All-American Championships, the ITA Southern Regional, the Conference Challenge in College Station, and the Key Biscayne Invitational ... Clinched an upset victory for the Tigers over then-No. 11 Texas A&M when he came from behind to defeat Niall Angus 7-5, 4-6, 7-6(1), despite being down to match point twice ... Partnered with Simpson at the ITA All-American Championships to defeat then-No. 13 Diego Acosta and Aaron Dujovne of Purdue 8-3 ... Earned his first varsity letter.

PRIOR TO LSU

Came to LSU ranked 1,089 in the ATP doubles standings and 1,095 in the singles rankings ... Listed as high as No. 64 in the world in juniors tennis ... Captured the singles title at the 2011 Junior South American Championships by defeating the No. 2 junior player in the world in the finals ... Won the doubles title at the Bolivia F1 Futures event in 2011 ... Reached the singles quarterfinal round at the Peru F4 Futures event in 2011 ... Attended Colesol Saint Germain High School where he also played soccer.

PERSONAL

Born Sept. 11, 1993 in La Paz, Bolivia ... Son of Edgar Arias and Rosolia Compuzano ... Has one older brother, Rodrigo ... Chose LSU because of the coaches.

Honors

2015 ITA Doubles All-American

Singles

YEAR	RECORD	1	2	3	4	5	6	TOUR
2012-13	12-13	-	1-0	-	-	3-3	5-3	3-7
2013-14	19-17	0-1	4-6	3-3	3-1	1-0	-	8-6
2014-15	25-10	-	1-0	4-2	7-1	3-0	1-0	2-1
TOTALS	56-40	0-1	6-6	7-5	14-2	7-3	6-3	13-14

Doubles

YEAR	RECORD	1	2	3	TOUR
2012-13	12-19	-	1-0	9-11	2-8
2013-14	25-14	10-6	0-1	4-3	11-4
2014-15	17-11	6-6	4-0	—	0-0
TOTALS	37-33	16-12	5-1	13-14	13-12



Andrew Korinek

SENIOR • MANSFIELD, TEXAS

JUNIOR SEASON (2014-15)

Korinek picked up eight singles win along with a 7-6 doubles record in his junior campaign ... Went 4-2 on court six where he saw the most of his court time ... Earned second varsity letter ... ITA Scholar Athlete ... SEC Academic Honor Roll.

SOPHOMORE SEASON (2013-14)

Completed in all tournaments and 27 of 28 dual matches for the Tigers in his first season ... Finished the dual season with a 14-6 record in doubles, winning eight of his final 10 matches ... Played on all three courts in doubles with four different partners ... Went 22-16 overall in singles ... Finished with a 13-9 singles record in the dual season ... Played most singles matches of the dual season on Courts 2, 3 and 4 ... Went 6-4 on court 2, 3-3 on court 3 and 3-2 on court 4 ... Earned his first varsity letter at LSU.

FRESHMAN SEASON (at Texas 2012-13)

He notched a 16-5 overall singles record for the 2012-13 season, going 7-2 in dual-match play ... He went 1-0 on Courts 1 and 4, 2-0 on Court 5, and 3-2 on Court 6 ... He amassed a 4-7 overall doubles record, notching a 1-4 dual-match record ... He earned his first varsity letter ... Transferred to LSU in the summer of 2013.

HIGH SCHOOL

Ranked as high as No. 7 nationally among high school seniors by TennisRecruiting.net ... Won the boys' 16 doubles draw at the 2010 USTA Boys' National Championships in Kalamazoo, Mich. ... Reached the singles semifinals at the 2010 USTA Winter National Championships ... Won the boys' 18 division singles title at the age of 16 at the Texas Sectional Championships ... Won the 2011 USTA Texas Sectional event in Waco, Texas ... 2011 Texas UIL 5A state singles champion.

PERSONAL

Born Andrew Timoth Korinek on Sept. 14, 1993 in Dallas, Texas ... Son of John and Laurie Korinek ... Has four siblings, Elizabeth, Josh, Matthew and Mary Kate ... Sister Elizabeth played one year of tennis at Abilene Christian University.

Singles

YEAR	RECORD	1	2	3	4	5	6	TOUR
2013-14	22-16	-	6-4	3-3	4-2	-	-	9-7
2014-15	8-12	-	-	0-1	1-4	2-2	4-2	1-3
TOTALS	30-28	-	6-4	3-4	5-6	2-2	4-2	10-10

Doubles

YEAR	RECORD	1	2	3	TOUR
2013-14	17-14	2-0	0-1	12-5	3-8
2014-15	7-6	-	1-0	1-1	5-5
TOTALS	24-20	2-0	1-1	13-6	8-13



Tam Trinh

SENIOR • DALLAS, TEXAS

JUNIOR SEASON (2014-15)

Opened the season as half of the No. 14 doubles team along with Eric Perez ... Earned a 15-12 doubles record ... Second most doubles victories on the team ... Competed primarily on courts one and two in doubles ... Clinched the win on court three against Tennessee with a 7-5, 6-2 victory on court three ... Spent most of the season on court three in singles ... Was ranked as high as No. 67 in singles on the season.

SOPHOMORE SEASON (2013-14)

Spent most of the season ranked in doubles with Eric Perez ... Entered the doubles rankings at No. 46 after going 6-0 in tournament play ... Went 20-14 overall in doubles on the year ... Went 11-8 in matches with Perez and 5-3 with Justin Butsch ... Clinched the first dual match of his career with a 6-2, 6-2 victory over Blake Gregor of New Orleans ... Clinched the match against No. 36 South Carolina on March 28 with an 8-6 doubles victory on court 1 with Perez over Chip Cox and Tsvetan Mihov ... Sent LSU to the 2014 SEC Tournament Quarterfinals with a 6-1, 6-4 win over Mississippi State's Robin Haden for his third clinch of the season ... Spent most of the season on court 4 in singles ... Also played matches on courts 2 through 5 ... Finished the season winning three of his last five singles matches ... Earned his second varsity letter.

FRESHMAN SEASON (2012-13)

Held a 12-13 mark in singles for the dual-match season and went 12-12 in doubles play ... Appeared on all six courts in singles but competed primarily on Courts 3, 4 and 5 ... Appeared primarily on Courts 1 and 2 in doubles ... Competed primarily with Stefan Szacinski and Roger Anderson in doubles ... Ranked as high as No. 31 in doubles with partner Stefan Szacinski ... Took down three ranked opponents in doubles including back-to-back SEC victories on the road against then-No. 33 Florida's No. 53 duo of Billy Federhofer and Gordon Watson and then-No. 33 South Carolina's No. 55 pair of Kyle Koch and Harry Menzies, both on Court 2 with partner Stefan Szacinski ... Also defeated then-No. 7 Ole Miss' No. 40 doubles team of Stefan Lindmark and Johan Backstrom with Szacinski to help the Tigers pull off the upset victory ... Competed in the ITA All-American Championships, ITA Southern Regional, Conference Challenge, and Key Biscayne Collegiate Invitational ... Earned his first varsity letter.

PRIOR TO LSU

Ranked as a five star and a top-50 player nationally by the Tennis Recruiting Network ... Listed in the top five of the 18s division in singles in Texas ... Won the gold ball by claiming the boys 16 and under doubles national championship in Kalamazoo, Mich., in 2010 ... Attended J.J. Pearce High School where he graduated with honors ... Became state singles champion by winning the 2008 Texas State Championship.

PERSONAL

Born Nov. 30, 1993 in Dallas, Texas ... Full name is Tam Trong Trinh ... Son of Hieu and Dung Trinh ... Has one older sibling, Tin ... Chose LSU because of his relationship with the coaches ... Plans to major in biological engineering.

Singles

YEAR	RECORD	1	2	3	4	5	6	TOUR
2012-13	17-19	2-1	0-3	2-3	4-4	2-2	2-0	5-6
2013-14	16-17	-	1-0	1-2	3-6	1-1	3-1	7-7
2014-15	12-20	0-1	1-0	7-8	-	-	-	4-11
TOTALS	45-56	2-2	2-3	10-13	7-10	3-3	5-1	15-24

Doubles

YEAR	RECORD	1	2	3	TOUR
2012-13	17-17	3-5	9-6	0-1	5-5
2013-14	20-14	3-5	6-6	2-0	9-3
2014-15	21-18	5-0	8-5	0-1	8-12
TOTALS	58-49	11-10	23-17	2-2	22-20



Gabor Csonka

SOPHOMORE • NYIREGYHAZA, HUNGARY

PRIOR TO LSU

Csonka excelled in his freshman season for Ohio Dominican ... Competed in the 2014-15 campaign with a 23-1 overall singles record ... A perfect 15-0 record at the No. 1 singles position ... Finished 21-2 in doubles play ... Transferred to LSU summer of 2015.

PERSONAL

Born August 18, 1993 ... Son of Zsolt Risko and Laszlowe Csonka ... Has one brother, Roland and one sister, Tamara ... Plans to major in Sports Management.



Justin Butsch

JUNIOR • MIAMI, FLA.

SOPHOMORE SEASON (2014-15)

Turned in a strong season for the Tigers as he competed in every dual tournament on courts two through six ... Accumulated the largest win total on the team for the season with a 26-12 record ... Recorded a ranked victory during tournament play at the Conference Challenge in College Station in October where he defeated then-No. 46 Jeremy Efferding of Texas A&M ... Butsch and his doubles teammate Chris Simpson earned the most doubles victories on the team with a 19-9 record ... Butsch will be a key piece for the Tigers moving forward.

FRESHMAN SEASON (2013-14)

Named to the SEC All-Freshman Team after clinching four dual matches over ranked opponents and becoming an asset to the Tigers as a first-year player ... Clinched LSU's first SEC win at Ole Miss and lifted the Tigers to a 4-3 victory over George Washington ... Named SEC Freshman of the Week on March 19 ... Tallied a 19-16 overall record as a newcomer ... Went 11-10 in dual season singles matches with a 3-3 conference record ... Improved in the lineup from court 5 to court 2 ... Held a 3-1 record on court 3 and went 5-3 on court 5 ... Went undefeated on two courts in SEC matches, going 2-0 on court five and 1-0 on court three ... Went 16-16 in overall in doubles, which includes a 9-6 record on court 2 and a 5-3 record on court three ... Earned his first varsity letter.

PRIOR TO LSU

Attended USTA National Training Center in Boca Raton, Fla. ... International Tennis Federation Copa del Café Quarterfinalist ... Boy's National Open Winner in the 14s and 16s divisions ... Attended Kaplan College Prep Online

PERSONAL

Born Jan. 7, 1995 in Miami, Florida ... Full name is Justin Oliver Butsch ... Nicknames are JB, Jr. ... Son of Oliver Butsch and Mildred Munoz ... Chose LSU because the coaches, atmosphere and the work ethic in the program ... Plans to major in mass communication.

Honors

2014 SEC All-Freshman Team
SEC Freshman of the Week (March 19, 2014)

Singles

YEAR	RECORD	1	2	3	4	5	6	TOUR
2013-14	19-15	---	1-4	3-1	1-1	5-3	1-0	8-6
2014-15	26-12	---	1-0	2-0	7-2	5-3	3-1	8-6
TOTALS	45-27	---	2-4	5-1	8-3	10-6	4-1	16-12

Doubles

YEAR	RECORD	1	2	3	TOUR
2013-14	15-16	---	8-6	5-3	2-7
2014-15	21-13	1-0	5-1	10-4	5-8
TOTALS	36-29	1-0	13-7	15-7	7-15



Jordan Daigle

JUNIOR • LAFAYETTE, LA.

SOPHOMORE SEASON (2014-15)

In his first season with LSU, Jordan Daigle patrolled court one for the Tigers for much of the dual season ... Selected to the 2015 All-SEC First Team ... Amassed an 11-7 record on the year in singles, and a 14-9 doubles record ... Notched three victories over ranked opponents including No. 79 Giammarco Micolani of Arkansas, No. 56 Uros Petronijevic of San Diego and No. 12 Dominic Koepfer of Tulane ... Partnered up with Boris Arias to earn six victories over teams in the top 50 including three wins in the top eight ... Finished the season ranked No. 76 by the ITA in singles and No. 14 in doubles.

PRIOR TO LSU

Top-10, blue chip recruit in the country according to tennisrecruiting.net ... Played in Junior US Open in 2012 ... Signed with Virginia where he posted a 19-5 singles record and an 8-4 doubles record as a freshman during the 2013-14 season ... Ranked as high as No. 43 nationally in the ITA singles standings in his freshman season ... Had an 8-2 dual match singles record ... Transferred to LSU in the summer of 2014.

PERSONAL

Born May 18, 1994 ... Son of Robert and LeAnne Daigle ... Has one brother, Rory, and three sisters, Hailey, Megan and Jennifer ... Two sisters (Megan and Jennifer) and his father attended LSU ... Plans to major in real estate finance.

Honors

2015 All-SEC First Team

2015 ITA Doubles All-American

Singles

YEAR	RECORD	1	2	3	4	5	6	TOUR
2014-15	11-7	9-4	-	-	-	-	-	2-3
TOTALS	11-7	9-4	-	-	-	-	-	2-3

Doubles

YEAR	RECORD	1	2	3	TOUR
2014-15	14-11	6-6	3-0	-	5-5
TOTALS	14-11	6-6	3-0	-	5-5



Simon Freund

SOPHOMORE • STOCKHOLM, SWEDEN

FRESHMAN SEASON (2014-15)

Was able to compete in all but five competitions for the Tigers ... Showed promise as he compiled a 16-12 record in singles with the majority of matches on courts five and six ... Flashed his clutch gene in the first round of the Southeastern Conference Tournament when he clinched the match on court six to advance to the conference tournament quarterfinals.

PRIOR TO LSU

Ranked as high as 110 in juniors on ITF ... Amassed a singles record of 42-17 while posting a doubles record of 23-16 during his juniors career ... Also played soccer in high school.

PERSONAL

Born Sept. 28, 1996 ... Son of Peter and Lin Zhang Freund ... Plans to major in psychology.

Singles

YEAR	RECORD	1	2	3	4	5	6	TOUR
2014-15	16-12	-	-	1-0	-	5-0	3-4	7-8
Totals	16-12	-	-	1-0	-	5-0	3-4	7-8

Doubles

YEAR	RECORD	1	2	3	TOUR
2014-15	7-8	-	-	1-1	6-7
TOTALS	7-8	-	-	1-1	6-7



Cameron Andry

FR. • BATON ROUGE, LA.

PRIOR TO LSU

Four Star Recruit ... A 49-0 high school career record
... Held No. 1 ranking in Louisiana six straight years ...
Member of The Advocate's "Star of Stars" for three years
... All-Metro MVP for three years.

PERSONAL

Born October 3, 1996 ... Son of Keith and Krista Andry ...
Has one older brother, Collin ... Chose LSU because it's
close to home and has always wanted to play for the
Tigers ... Plans to major in Petroleum Engineering.



Nikola Samardzic

FR. • NEW YORK, NEW YORK

PRIOR TO LSU

Samardzic came to LSU as a Blue Chip Signee ... Ranked
highest at No. 7 in 2015 according to tennisrecruiting.net

PERSONAL

Born Sep. 15, 1997 in Manhattan, N.Y. ... Son of Strahinja
and Sanja Samardzic ... Has one older sibling, Ognjen ...
Plans to major in Business.



2015 Records and Rankings

LSU

Overall:	18-9
Home	14-2
Away	1-4
Neutral	3-3
Vs. SEC	6-6
Vs. SEC West	3-3
Vs. SEC East	3-3
Non-Conference	12-3
Louisiana Teams	2-0
Vs. Top 25	1-7
Vs. Top 10	0-4
Longest Win Streak	7

2015 Dual-Match Results

Record: 18-9

Coach: Jeff Brown

National Rank: 30

Lamar	W, 6-1
Nicholls	L, 7-0
#29 San Diego	W, 4-2
#3 TCU	L, 4-1
#45 Purdue	W, 7-0
Jackson State	W, 7-0
Jackson State	W, 7-0
Alcorn State	W, 7-0
Rice	W, 6-1
#21 Tulane	W, 4-3
#72 Tennessee	W, 4-0
#12 Kentucky	W, 4-1
#69 at South Carolina	L, 4-1
#17 at Georgia	L, 4-2
#56 at Vanderbilt	W, 4-1
New Orleans	W, 7-0
#50 at Alabama	W, 4-3
#22 Mississippi	L, 4-3
#32 Arkansas	W, 6-1
#25 at Florida	L, 4-2
#64 at Auburn	W, 4-3
#7 Texas A&M	L, 4-0
#44 at Mississippi State	L, 4-2
SEC Tournament	
(College Station, Texas)	
#69 South Carolina	W, 4-1
#7 at Texas A&M	L, 4-0
NCAA Tournament	
(Waco, Texas)	
Texas San Antonio	W, 4-0
#18 at Baylor	L, 4-0

LSU in the ITA Rankings

Date	Rank
Jan. 6	45
Jan. 20	45
Jan. 28	39
Feb. 3	42
Feb. 17	40
Feb. 24	31
March 3	28
March 10	33
March 17	23
March 24	24
March 31	25
April 7	24
April 14	25
April 21	27
May 1	29
May 26/June 3	30

Singles Rankings

Chris Simpson

Date	Rank
Jan. 6	55
Feb. 10	101
Feb. 24	98
March 10	117
April 7	121

Jordan Daigle

Date	Rank
Feb. 10	118
Feb. 24	64
March 10	85
March 24	75
April 7	76

April 14	74
April 21	75
May 1	76
May 26/June 3	82

Tam Trinh

Date	Rank
Jan. 6	67
Feb. 10	115
Feb. 24	125

Justin Butsch

Date	Rank
Jan. 6	111
Feb. 24	119

Doubles Rankings

Trinh/Perez

Date	Rank
Jan. 6	52
March 10	71

Daigle/Arias

Date	Rank
Feb. 10	45
Feb. 24	57
March 10	18
March 24	20
April 7	23
April 14	20
April 21	15
May 1	14
May 26/June 3	12



Singles

	OVERALL	DUAL	TOUR	SEC	1	2	3	4	5	6	VS. NAT'L
Boris Arias	25-10	16-3	9-7	7-2	---	1-0	4-2	7-1	3-0	1-0	2-1
John Michael Busch	2-6	0-0	2-6	0-0	---	---	---	---	---	---	0-0
Justin Butsch	26-12	18-6	8-6	6-4	---	1-0	2-0	7-2	5-3	3-1	1-2
Jordan Daigle	11-7	9-4	2-3	3-4	9-4	---	---	---	---	---	3-3
Simon Freund	16-12	9-4	7-8	1-2	---	---	1-0	---	5-0	3-4	0-2
Harrison Kennedy	7-8	4-0	3-8	0-0	---	---	---	---	1-0	3-0	0-1
Andrew Korinek	8-12	7-9	1-3	6-4	---	---	0-1	1-4	2-2	4-2	0-3
Eric Perez	7-4	3-0	4-4	0-0	---	---	---	---	---	3-0	0-0
Chris Simpson	25-13	15-6	10-7	5-5	3-1	12-5	---	---	---	---	2-4
Tam Trinh	12-20	8-9	4-11	2-6	0-1	1-0	7-8	---	---	---	1-6
Totals	139-104	89-41	50-63	30-27	12-6	15-5	14-11	15-7	16-5	17-7	9-22
Percentage	.572	.685	.442	.526	.667	.750	.560	.682	.762	.708	.290

Doubles Teams

	OVERALL	DUAL	TOUR	SEC	1	2	3	NAT'L
Daigle/Simpson	0-2	0-0	0-2	0-0	---	---	---	0-0
Korinek/Trinh	4-3	1-0	3-3	0-0	---	1-0	---	0-0
Busch/Kennedy	6-3	1-0	5-3	0-0	---	---	1-0	0-0
Butsch/Freund	0-2	0-0	0-1	0-0	---	---	---	0-0
Perez/Trinh	15-12	11-4	4-8	5-4	5-0	6-4	---	0-2
Freund/Kennedy	2-1	1-0	1-1	0-0	---	---	1-0	0-0
Butsch/Simpson	19-9	15-4	4-5	5-4	1-0	5-1	9-3	1-1
Arias/Daigle	14-9	9-6	5-3	4-5	6-6	3-0	---	5-5
Arias/Freund	2-1	0-0	2-1	0-0	---	---	---	0-0
Busch/Simpson	0-1	0-0	0-1	0-0	---	---	---	0-0
Freund/Perez	2-1	0-0	2-1	0-0	---	---	---	0-0
Busch/Freund	0-1	0-0	0-1	0-0	---	---	---	0-0
Freund/Korinek	1-1	0-0	1-1	0-0	---	---	---	0-0
Simpson/Trinh	2-2	1-1	1-1	0-0	---	1-1	---	0-1
Korinek/Perez	0-1	0-0	0-1	0-0	---	---	---	0-0
Butsch/Korinek	2-1	1-1	1-0	0-0	---	---	1-1	0-0
Busch/Perez	1-0	1-0	0-0	0-0	---	---	1-0	0-0
Arias/Perez	1-0	1-0	0-0	0-0	---	1-0	---	0-0
Freund/Trinh	0-1	0-1	0-0	0-0	---	---	0-1	0-0

Doubles

	OVERALL	DUAL	TOUR	SEC	1	2	3	NAT'L
Boris Arias	17-11	10-6	7-5	4-5	6-6	4-0	---	5-5
John Michael Busch	7-5	2-0	5-5	0-0	---	1-1	2-0	0-0
Justin Butsch	21-13	16-5	5-8	5-4	1-0	5-1	10-4	1-1
Jordan Daigle	14-11	9-6	5-5	4-5	6-6	3-0	---	5-5
Simon Freund	7-8	9-6	5-5	4-5	6-6	3-0	---	5-5
Harrison Kennedy	8-4	2-0	6-4	0-0	---	---	2-0	0-0
Andrew Korinek	7-6	2-1	5-5	0-0	---	1-0	1-1	0-0
Eric Perez	19-14	13-4	6-10	5-4	5-0	7-4	1-0	0-2
Chris Simpson	21-14	16-5	5-9	5-4	1-0	6-2	9-3	1-2
Tam Trinh	21-18	13-6	8-12	5-4	5-0	8-5	0-1	0-3
Totals	71-52	42-17	29-35	14-13	12-6	17-6	13-5	6-9
Percentage	.577	.712	.453	.519	.667	.739	.722	.400

#45 LSU 6, Lamar 1

Jan 18, 2015 at Baton Rouge (Dub Robinson Stadium)

Singles competition

1. Nikita Lis (LAMAR) def. #67 Tam Trinh (LSU) 6-4, 2-6, 1-0 (10-8)
2. #55 Chris Simpson (LSU) def. Michael Feucht (LAMAR) 6-2, 6-1
3. #111 Justin Butsch (LSU) def. Jeandre Hoogenboezem (LAMAR) 6-4, 7-5
4. Boris Arias (LSU) def. Benny Schweizer (LAMAR) 6-1, 6-3
5. Simon Freund (LSU) def. Juuso Laitinen (LAMAR) 6-1, 6-2
6. Harrison Kennedy (LSU) def. Mikko Rajamaki (LAMAR) 7-5, 6-1

Doubles competition

1. Boris Arias/Jordan Daigle (LSU) vs. #29 Michael Feucht/Nikita Lis (LAMAR) 4-4, unfinished
2. #52 Tam Trinh/Eric Perez (LSU) def. Jeandre Hoogenboezem/Benny Schweizer (LAMAR) 6-0
3. Chris Simpson/Justin Butsch (LSU) def. Juuso Laitinen/Mikko Rajamaki (LAMAR) 6-2

#45 LSU 7, Nicholls 0

Jan 18, 2015 at Baton Rouge (Dub Robinson Stadium)

Singles competition

1. #55 Chris Simpson (LSU) def. Sam Meessen (NICM) 6-4, 6-1
2. #67 Tam Trinh (LSU) def. Partha Adavelly (NICM) 7-5, 6-1
3. #111 Justin Butsch (LSU) def. Evan Karatzas (NICM) 6-1, 6-2
4. Boris Arias (LSU) def. Bernard Wezeman (NICM) 2-6, 6-0, 7-6
5. Simon Freund (LSU) def. Kieran Cronin (NICM) 6-2, 6-2
6. Harrison Kennedy (LSU) def. Max Sinn (NICM) 6-2, 6-2

Doubles competition

1. #52 Tam Trinh/Eric Perez (LSU) def. Bernard Wezeman/Kieran Cronin (NICM) 6-4
2. Chris Simpson/Justin Butsch (LSU) def. Sam Meessen/Lukas Clemens (NICM) 6-2
3. Boris Arias/Simon Freund (LSU) vs. Partha Adavelly/Evan Karatzas (NICM) 5-4, unfinished

#44 LSU 4, #33 San Diego 2

Jan 24, 2015 at College Station, TX (Mitchell Tennis Center)

Singles competition

1. Jordan Daigle (LSU) def. Uros Petronijevic (USD) 4-6, 6-3, 6-3
2. Filip Vittek (USD) vs. Chris Simpson (LSU) 6-4, 4-6, 1-1, unfinished
3. Romain Kalaydjian (USD) def. Tam Trinh (LSU) 6-3, 7-6 (10-8)
4. Jordan Angus (USD) def. Andrew Korinek (LSU) 6-3, 7-6 (7-3)
5. Justin Butsch (LSU) def. Ciaran Fitzgerald (USD) 6-1, 6-4
6. Boris Arias (LSU) def. Geoffrey Fosso (USD) 6-3, 6-1

Doubles competition

1. Jordan Angus/Filip Vittek (USD) vs. Boris Arias/Jordan Daigle (LSU) 4-5, unfinished
2. Chris Simpson/Tam Trinh (LSU) def. Ciaran Fitzgerald/Uros Petronijevic (USD) 6-2
3. Justin Butsch/Andrew Korinek (LSU) def. Geoffrey Fosso/Romain Kalaydjian (USD) 6-4

#37 TCU 4, #45 LSU 1

Jan 25, 2015 at College Station, TX (Mitchell Tennis Center)

Singles competition

1. #24 Cameron Norrie (TCU) vs. Jordan Daigle (LSU) 7-5, 6-6, unfinished
2. Nick Chappell (TCU) vs. #55 Chris Simpson (LSU) 6-4, 3-6, 3-1, unfinished
3. #91 Will Stein (TCU) def. Andrew Korinek (LSU) 6-3, 6-4
4. Arnau Dachs (TCU) def. #111 Justin Butsch (LSU) 6-2, 6-1
5. Boris Arias (LSU) def. Facundo Lugones (TCU) 6-1, 6-3
6. #87 Guillermo Nuñez (TCU) def. Simon Freund (LSU) 6-3, 1-6, 6-3

Doubles competition

1. #20 Nick Chappell/Will Stein (TCU) vs. Jordan Daigle/Boris Arias (LSU) 5-4, unfinished
2. #15 Cameron Norrie/Trevor Johnson (TCU) def. Chris Simpson/Tam Trinh (LSU) 6-3
3. Arnau Dachs/Guillermo Nuñez (TCU) def. Justin Butsch/Andrew Korinek (LSU) 6-2

#39 LSU 7, #49 Purdue 0

Jan 31, 2015 at Baton Rouge, La. (Dub Robinson Stadium)

Singles competition

1. Jordan Daigle (LSU) def. #84 Ricky Medinilla (PUR) 7-6, 6-3
2. #55 Chris Simpson (LSU) def. Diego Acosta (PUR) 6-0, 6-4
3. #67 Tam Trinh (LSU) def. Mateus Silva (PUR) 6-3, 5-7, 7-6
4. Boris Arias (LSU) def. Renan Hanayama (PUR) 6-0, 6-0
5. #111 Justin Butsch (LSU) def. Arthur Dobradin (PUR) 6-0, 6-1
6. Simon Freund (LSU) def. Lucas Dages (PUR) 1-6, 6-1, 15-13

Doubles competition

1. #52 Tam Trinh/Eric Perez (LSU) def. Diego Acosta/Ricky Medinilla (PUR) 6-4
2. Boris Arias/Jordan Daigle (LSU) def. Arthur Dobradin/Mateus Silva (PUR) 6-0
3. Chris Simpson/Justin Butsch (LSU) vs. Lucas Dages/Renan Hanayama (PUR) 5-4, unfinished

#42 LSU 7, Jackson State 0

Feb 07, 2015 at Baton Rouge (Dub Robinson Stadium)

Singles competition

1. Jordan Daigle (LSU) def. Carlos Martinez (JSUM) 6-2, 6-2
2. #55 Chris Simpson (LSU) def. Camilo Patino (JSUM) 6-0, 6-3
3. #67 Tam Trinh (LSU) def. Miguel Gomez Martin (JSUM) 6-0, 6-1
4. #111 Justin Butsch (LSU) def. Vishu Prasad (JSUM) 6-1, 6-2
5. Simon Freund (LSU) def. Styllanon Gkontsarlis (JSUM) 6-2, 6-3
6. Harrison Kennedy (LSU) def. Federico Mendletta (JSUM) 6-2, 6-1

Doubles competition

1. #52 Eric Perez/Tam Trinh (LSU) vs. Carlos Martinez/Richie Agarwal (JSUM) 5-2, unfinished
2. Boris Arias/Jordan Daigle (LSU) def. Camilo Patino/Miguel Gomez Martin (JSUM) 6-0
3. Chris Simpson/Justin Butsch (LSU) def. Hernan Geria/Federico Mendletta (JSUM) 6-3

#42 LSU 7, Jackson State 0

Feb 07, 2015 at Baton Rouge, La. (Dub Robinson Stadium)

Singles competition

1. #55 Chris Simpson (LSU) def. Miguel Gomez Martin (JSU) 6-0, 6-2
2. Boris Arias (LSU) def. Camilo Patino (JSU) 6-0, 6-3
3. #67 Tam Trinh (LSU) def. Richie Agarwal (JSU) 6-3, 6-4
4. #111 Justin Butsch (LSU) def. Styllanon Gkontsarlis (JSU) 6-2, 6-1
5. Simon Freund (LSU) def. Hernan Geria (JSU) 6-0, 6-0
6. Eric Perez (LSU) def. Ryan Swanier (JSU) 6-1, 6-1

Doubles competition

1. Chris Simpson/Justin Butsch (LSU) def. Carlos Martinez/Richie Agarwal (JSUM) 6-1
2. Eric Perez/Simon Freund (LSU) vs. Styllanon Gkontsarlis/Miguel Gomez Martin (JSUM) 5-4, uf
3. John Michael Busch/Harrison Kennedy (LSU) def. Hernan Geria/Federico Mendletta (JSUM) 6-3

#42 LSU 7, Alcorn State 0

Feb 07, 2015 at Baton Rouge (Dub Stadium)

Singles competition

1. Jordan Daigle (LSU) def. Ernesto Santillan (ALC) 6-2, 5-7, 10-3
2. #55 Chris Simpson (LSU) def. Nikita Kostikov (ALC) 6-3, 6-2
3. #67 Tam Trinh (LSU) def. Nischay Rawal (ALC) 6-1, 6-2
4. #111 Justin Butsch (LSU) def. Vasudev Vijayaraman (ALC) 6-2, 6-0
5. Simon Freund (LSU) def. Garry Amor (ALC) 6-1, 6-0
6. Eric Perez (LSU) def. Kilian Salgado (ALC) 6-1, 6-2

Doubles competition

1. Boris Arias/Jordan Daigle (LSU) def. Ernesto Santillan/Nikita Kostikov (ALC) 6-1
2. Chris Simpson/Justin Butsch (LSU) def. Nischay Rawal/Vasudev Vijayaraman (ALC) 6-2
3. Eric Perez/John Michael Busch (LSU) def. Garry Amor/Kilian Salgado (ALC) 6-1

#42 LSU 6, Rice 1

Feb 15, 2015 at Baton Rouge, La. (Dub Robinson Stadium)

Singles competition

1. #118 Jordan Daigle (LSU) def. Srikar Alla (RICE) 6-3, 6-4
2. #101 Chris Simpson (LSU) def. Jamie Malik (RICE) 6-3, 7-6 (8-6)
3. #115 Tam Trinh (LSU) def. Adam Gustafsson (RICE) 6-3, 6-2
4. Max Andrews (RICE) def. Andrew Korinek (LSU) 6-0, 2-6, 6-4
5. Boris Arias (LSU) def. David Warren (RICE) 6-2, 5-7, 1-0 (10-5)
6. Justin Butsch (LSU) def. Gustavo Gonzalez (RICE) 6-2, 6-1

Doubles competition

1. Tam Trinh/Eric Perez (LSU) def. Max Andrews/David Warren (RICE) 6-3
2. Srikar Alla/Jamie Malik (RICE) vs. #45 Jordan Daigle/Boris Arias (LSU) no result
3. Chris Simpson/Justin Butsch (LSU) def. Adam Gustafsson/Gustavo Gonzalez (RICE) 6-4

#40 LSU 4, #51 Tulane 3

Feb 22, 2015 at Baton Rouge, La. (Dub Robinson Stadium)

Singles competition

1. #118 Jordan Daigle (LSU) def. #5 Dominik Koepfer (TLN) 7-6 (7-0), 6-1
2. #101 Chris Simpson (LSU) def. Constantin Schmitz (TLN) 4-6, 6-4, 6-3
3. Alex Van Cott (TLN) def. #115 Tam Trinh (LSU) 6-7 (1-7), 6-3, 6-3
4. Chi-Shan Jao (TLN) def. Boris Arias (LSU) 6-0, 6-3
5. Sebastian Rey (TLN) def. Andrew Korinek (LSU) 3-6, 6-0, 6-3
6. Justin Butsch (LSU) def. Ian Van Cott (TLN) 7-5, 7-6 (7-4)

Doubles competition

1. Tam Trinh/Eric Perez (LSU) def. Dominik Koepfer/Chi-Shan Jao (TLN) 6-3
2. #45 Jordan Daigle/Boris Arias (LSU) def. Constantin Schmitz/Sebastian Rey (TLN) 7-5
3. Chris Simpson/Justin Butsch (LSU) vs. Alex Van Cott/Ian Van Cott (TLN) 6-5, unfinished

#31 LSU 4, #56 Tennessee 0**Feb 27, 2015 at Baton Rouge, La. (Dub Robinson Stadium)****Singles competition**

1. #64 Jordan Daigle (LSU) vs. #15 Mikelis Libietis (UT-M) 4-6, 7-5, unfinished
2. #98 Chris Simpson (LSU) def. Hunter Reese (UT-M) 6-1, 6-2
3. #125 Tam Trinh (LSU) def. Jack Schipanski (UT-M) 7-5, 6-2
4. Boris Arias (LSU) vs. Luis Valero (UT-M) 7-6, 4-4, unfinished
5. #119 Justin Butsch (LSU) vs. Jess Jones (UT-M) 6-3, 5-3, unfinished
6. Andrew Korinek (LSU) def. Bartosz Sawicki (UT-M) 6-2, 6-0

Doubles competition

1. #57 Boris Arias/Jordan Daigle (LSU) vs. #3 Hunter Reese/Mikelis Libietis (UT-M) 4-5, unfinished
2. Tam Trinh/Eric Perez (LSU) def. Bartosz Sawicki/Luis Valero (UT-M) 6-2
3. Chris Simpson/Justin Butsch (LSU) def. Jack Schipanski/Andrew Dromsky (UT-M) 6-4

#31 LSU 4, Kentucky 1**Mar 01, 2015 at Baton Rouge, La. (Dub Robinson Stadium)****Singles competition**

1. #64 Jordan Daigle (LSU) vs. #83 Beck Pennington (UK) 4-6, 7-6, 3-1, unfinished
2. #98 Chris Simpson (LSU) def. Jerry Lopez (UK) 6-2, 6-4
3. #122 William Bushamuka (UK) def. #125 Tam Trinh (LSU) 7-6, 6-0
4. Boris Arias (LSU) def. Kevin Lai (UK) 6-2, 7-5
5. #119 Justin Butsch (LSU) vs. Trey Yates (UK) 6-3, 4-6, 3-4, unfinished
6. Andrew Korinek (LSU) def. Nils Ellefsen (UK) 6-4, 2-6, 6-1

Doubles competition

1. #57 Boris Arias/Jordan Daigle (LSU) def. #45 Beck Pennington/Kevin Lai (UK) 6-3
2. Tam Trinh/Eric Perez (LSU) def. Jerry Lopez/William Bushamuka (UK) 6-4
3. Chris Simpson/Justin Butsch (LSU) vs. Nils Ellefsen/Trey Yates (UK) 4-4, unfinished

#40 South Carolina 4, #28 LSU 1**Mar 6, 2015 at Columbia, Sc. (Columbia, Sc.)****Singles competition**

1. #64 Jordan Daigle (LSU) def. Andrew Adams (SC) 6-2, 7-6
2. Kyle Koch (SC) def. #98 Chris Simpson (LSU) 6-3, 6-7, 6-1
3. Thiago Pinheiro (SC) def. #125 Tam Trinh (LSU) 6-3, 6-3
4. #101 Andrew Schafer (SC) def. #119 Justin Butsch (LSU) 6-1, 7-6
5. Boris Arias (LSU) vs. Harrison O'Keefe (SC) 6-7, unfinished
6. Andrew Korinek (LSU) vs. Thomas Mayronne (SC) 1-6, 0-1, unfinished

Doubles competition

1. #57 Boris Arias/Jordan Daigle (LSU) vs. Thiago Pinheiro/Kyle Koch (SC) 5-3, unfinished
2. Thomas Mayronne/Harrison O'Keefe (SC) def. Eric Perez/Tam Trinh (LSU) 6-2
3. Andrew Adams/Andrew Schafer (SC) def. Justin Butsch/Chris Simpson (LSU) 6-3

#33 LSU 4, #11 Vanderbilt 1**Mar 15, 2015 at Baton Rouge, La. (Dub Stadium)****Singles competition**

1. #10 Gonzales Austin (VANDY) def. #85 Jordan Daigle (LSU) 6-2, 6-4
2. #117 Chris Simpson (LSU) vs. Rhys Johnson (VANDY) 6-3, 5-6, unfinished
3. Tam Trinh (LSU) def. Daniel Valent (VANDY) 7-5, 6-4
4. Justin Butsch (LSU) def. Kris Yee (VANDY) 6-2, 6-1
5. Boris Arias (LSU) def. Suresh Eswaran (VANDY) 6-3, 6-3
6. Andrew Korinek (LSU) vs. Jeffrey Offerdahl (VANDY) 6-3, 4-6, 2-0, unfinished

Doubles competition

1. #18 Boris Arias/Jordan Daigle (LSU) def. #1 Gonzales Austin/Rhys Johnson (VANDY) 6-4
2. Baker Newman/Pen Binet (VANDY) def. Tam Trinh/Eric Perez (LSU) 6-1
3. Chris Simpson/Justin Butsch (LSU) def. Suresh Eswaran/Daniel Valent (VANDY) 6-1

#33 LSU 7, New Orleans 0**Mar 15, 2015 at Baton Rouge, La. (Dub Robinson Stadium)****Singles competition**

1. #117 Chris Simpson (LSU) def. Rui Silva (UNO) 6-0, 6-2
2. Justin Butsch (LSU) def. Gonzalo Garcia (UNO) 6-3, 6-1
3. Simon Freund (LSU) def. Blake Gregor (UNO) 6-3, 6-3
4. Andrew Korinek (LSU) def. Romain Lefevre (UNO) 6-1, 6-2
5. Harrison Kennedy (LSU) def. Giacomo Adoncecchi (UNO) 6-0, 6-4
6. Eric Perez (LSU) def. Daniel Populus (UNO) 7-6, 6-0

Doubles competition

1. Chris Simpson/Justin Butsch (LSU) vs. Blake Gregor/Rui Silva (UNO) 5-4, unfinished
2. Eric Perez/Boris Arias (LSU) def. Romain Lefevre/Giacomo Adoncecchi (UNO) 6-1
3. Simon Freund/Harrison Kennedy (LSU) def. Gonzalo Garcia/Luis Albuquerque (UNO) 6-2

#23 LSU 4, #60 Alabama 3**Mar 20, 2015 at Tuscaloosa, Ala.****Singles competition**

1. #85 Jordan Daigle (LSU) def. Korey Lovett (BAMA) 7-6, 6-4
2. #117 Chris Simpson (LSU) def. Becker O'Shaughnesse (BAMA) 6-4, 3-6, 7-5
3. Nikko Madregallejo (BAMA) def. Tam Trinh (LSU) 7-6, 6-4
4. Boris Arias (LSU) def. Danny Kerznerman (BAMA) 6-3, 1-6, 6-1
5. Stuart Kenyon (BAMA) def. Justin Butsch (LSU) 6-4, 2-6, 6-3
6. Andrew Korinek (LSU) def. Sam Edwards (BAMA) 7-5, 7-6

Doubles competition

1. #32 Korey Lovett/Becker O'Shaughnesse (BAMA) def. #18 Jordan Daigle/Boris Arias (LSU) 6-4
2. Sean Donohue/Stuart Kenyon (BAMA) vs. #71 Eric Perez/Tam Trinh (LSU) 4-4, unfinished
3. Sam Edwards/Nikko Madregallejo (BAMA) def. Chris Simpson/Justin Butsch (LSU) 6-1

#13 Ole Miss 4, #24 LSU 3**Mar 27, 2015 at Baton Rouge, La. (Dub Robinson Stadium)****Singles competition**

1. #15 Nik Scholtz (OM) def. #75 Jordan Daigle (LSU) 6-3, 1-6, 7-6
2. #84 Stefan Lindmark (OM) def. Chris Simpson (LSU) 7-6, 7-5
3. Gustav Hansson (OM) def. Tam Trinh (LSU) 6-2, 6-4
4. Boris Arias (LSU) def. William Kallberg (OM) 6-2, 6-3
5. Justin Butsch (LSU) def. Ricardo Jorge (OM) 6-3, 6-3
6. Vinod Gowda (OM) def. Andrew Korinek (LSU) 6-3, 6-2

Doubles competition

1. #20 Jordan Daigle/Boris Arias (LSU) def. Zvonimir Babic/Nik Scholtz (OM) 6-4
2. Tam Trinh/Eric Perez (LSU) vs. Gustav Hansson/Stefan Lindmark (OM) 4-4, unfinished
3. Chris Simpson/Justin Butsch (LSU) def. William Kallberg/Grey Hamilton (OM) 6-3

#24 LSU 6, #53 Arkansas 1**Mar 29, 2015 at Baton Rouge, La. (Dub Robinson Stadium)****Singles competition**

1. #75 Jordan Daigle (LSU) def. #81 Giammarco Micolani (ARK) 6-2, 1-6, 7-5
2. Chris Simpson (LSU) def. Jovan Parlic (ARK) 6-4, 6-0
3. Boris Arias (LSU) def. William Albanese (ARK) 6-3, 2-6, 6-2
4. Justin Butsch (LSU) def. Johan den Toom (ARK) 6-2, 6-2
5. Andrew Korinek (LSU) def. Santiago Munoz (ARK) 6-4, 3-6, 6-2
6. David Herrerias (ARK) def. Simon Freund (LSU) 7-6, 6-4

Doubles competition

1. #20 Boris Arias/Jordan Daigle (LSU) vs. Jovan Parlic/Giammarco Micolani (ARK) 3-3, uf
2. Tam Trinh/Eric Perez (LSU) def. William Albanese/Johan den Toom (ARK) 6-2
3. Chris Simpson/Justin Butsch (LSU) def. David Herrerias/Juan Marino (ARK) 6-1

#16 Florida 4, #25 LSU 2**Apr 03, 2015 at Gainesville, Fla.****Singles competition**

1. #71 Diego Hidalgo (UF) vs. #75 Jordan Daigle (LSU) 3-6, 6-1, 5-4, unfinished
2. #115 Elliott Orkin (UF) def. Chris Simpson (LSU) 5-7, 6-3, 6-2
3. Gordon Watson (UF) def. Tam Trinh (LSU) 6-3, 6-3
4. Boris Arias (LSU) def. #118 Maxx Lipman (UF) 6-4, 6-1
5. Chase Perez-Blanco (UF) def. Justin Butsch (LSU) 6-2, 6-3
6. Andrew Korinek (LSU) def. Jordan Belga (UF) 7-6, 6-3

Doubles competition

1. #42 Diego Hidalgo/Gordon Watson (UF) def. #20 Jordan Daigle/Boris Arias (LSU) 7-6
2. Maxx Lipman/Elliott Orkin (UF) def. Eric Perez/Tam Trinh (LSU) 6-4
3. Justin Butsch/Chris Simpson (LSU) def. Oliver Landert/Joshua Wardell (UF) 6-1

#25 LSU 4, #46 Auburn 3**Apr 05, 2015 at Auburn, Alabama (Yarbrough Tennis Center)****Singles competition**

1. Lukas Ollert (AU) def. Jordan Daigle (LSU) 6-2, 6-0
2. Chris Simpson (LSU) def. Marko Krickovic (AU) 6-3, 6-4
3. Maxime Hinnisdals (AU) def. Boris Arias (LSU) 6-3, 3-6, 6-3
4. Justin Butsch (LSU) def. Dante Saleh (AU) 6-7 (5-7), 6-3, 6-4
5. Andrew Korinek (LSU) def. Joseph Van Dooren (AU) 7-6 (7-2), 6-1
6. Simon Freund (LSU) def. Petar Tomic (AU) 7-6, 6-4

Doubles competition

1. Lukas Ollert/Marko Krickovic (AU) def. Jordan Daigle/Boris Arias (LSU) 6-4
2. Eric Perez/Tam Trinh (LSU) def. Maxime Hinnisdals/Joseph Van Dooren (AU) 6-0
3. Oliver Plaskett/Petar Tomic (AU) def. Chris Simpson/Justin Butsch (LSU) 6-3

#7 Texas A&M 4, #24 LSU 0

Apr 09, 2015 at Baton Rouge, La. (Dub Robinson Stadium)

Singles competition

1. #121 Chris Simpson (LSU) vs. #60 Jeremy Efferding (TAMU) 6-7, 1-1, unfinished
2. #76 Jordan Daigle (LSU) vs. #64 Shane Vinsant (TAMU) 4-6, 5-5, unfinished
3. Arthur Rinderknech (TAMU) def. Boris Arias (LSU) 6-0, 6-4
4. Tam Trinh (LSU) vs. #55 Harrison Adams (TAMU) 6-7, 3-3, unfinished
5. #78 AJ Catanzariti (TAMU) def. Andrew Korinek (LSU) 7-5, 6-2
6. Jordi Arconada (TAMU) def. Justin Butsch (LSU) 6-2, 6-1

Doubles competition

1. #13 Harrison Adams/Shane Vinsant (TAMU) def. #23 Boris Arias/Jordan Daigle (LSU) 6-4
2. #41 Jordan Szabo/Jeremy Efferding (TAMU) def. Tam Trinh/Eric Perez (LSU) 6-2
3. Chris Simpson/Justin Butsch (LSU) vs. AJ Catanzariti/Arthur Rinderknech (TAMU) 5-6, unfinished

#20 Mississippi State 4, #25 LSU 2

Apr 12, 2015 at Starkville, Miss.

Singles competition

1. #73 Florian Lakat (MSU) def. #121 Chris Simpson (LSU) 6-1, 7-5
2. Juan Cruz Estevearena (MSU) vs. #74 Jordan Daigle (LSU) 3-6, 6-3, 5-5, unfinished
3. Boris Arias (LSU) def. #96 Mate Cutura (MSU) 6-4, 6-4
4. Rishab Agarwal (MSU) def. Andrew Korinek (LSU) 6-2, 1-6, 6-1
5. Justin Butsch (LSU) def. Tassilo Schmid (MSU) 6-2, 6-4
6. Julian Cash (MSU) def. Simon Freund (LSU) 2-6, 6-3, 7-6

Doubles competition

1. #15 Julian Cash/Florian Lakat (MSU) def. #23 Boris Arias/Jordan Daigle (LSU) 6-4
2. Mate Cutura/Tassilo Schmid (MSU) def. Chris Simpson/Justin Butsch (LSU) 6-4
3. Juan Cruz Estevearena/Robin Haden (MSU) vs. Tam Trinh/Simon Freund (LSU) 3-5, unfinished

#25 LSU 4, #45 South Carolina 1

Apr 16, 2015 at College Station, TX (George P Mitchell Tennis Center)

Singles competition

1. #74 Jordan Daigle (LSU) vs. Andrew Adams (SC) 5-7, 6-3, 0-1, unfinished
2. Kyle Koch (SC) def. Chris Simpson (LSU) 6-3, 6-4
3. Boris Arias (LSU) def. Andrew Schafer (SC) 6-2, 6-2
4. Andrew Korinek (LSU) vs. Thiago Pinheiro (SC) 4-6, 5-5, unfinished
5. Justin Butsch (LSU) def. Sam Swank (SC) 6-3, 6-1
6. Simon Freund (LSU) def. Thomas Maryonne (SC) 6-3, 6-4

Doubles competition

1. #20 Jordan Daigle/Boris Arias (LSU) def. #29 Kyle Koch/Thiago Pinheiro (SC) 6-3
2. Justin Butsch/Chris Simpson (LSU) def. Sam Swank/Thomas Maryonne (SC) 6-2
3. Simon Freund/Tam Trinh (LSU) vs. Andrew Schafer/Andrew Adams (SC) 5-3, unfinished

#6 Texas A&M 4, #25 LSU 0

Apr 17, 2015 at College Station, TX (George P Mitchell Tennis Center)

Singles competition

1. #61 Jeremy Efferding (TAMU) vs. #74 Jordan Daigle (LSU) 4-6, 4-2, unfinished
2. #69 Shane Vinsant (TAMU) vs. Chris Simpson (LSU) 2-6, 4-4, unfinished
3. Arthur Rinderknech (TAMU) vs. Boris Arias (LSU) 6-3, 4-4, unfinished
4. #55 Harrison Adams (TAMU) def. Andrew Korinek (LSU) 6-4, 6-1
5. #93 AJ Catanzariti (TAMU) def. Justin Butsch (LSU) 6-0, 6-2
6. Jordi Arconada (TAMU) def. Simon Freund (LSU) 6-4, 6-3

Doubles competition

1. #11 Harrison Adams/Shane Vinsant (TAMU) def. #20 Jordan Daigle/Boris Arias (LSU) 6-1
2. Chris Simpson/Justin Butsch (LSU) def. #46 Jeremy Efferding/Jordan Szabo (TAMU) 6-2
3. Arthur Rinderknech/AJ Catanzariti (TAMU) def. Tam Trinh/Simon Freund (LSU) 7-5

#29 LSU 4, #59 UTSA 0

May 08, 2015 at Waco, Texas (Hawkins Indoor Tennis Center)

Singles competition

1. #76 Jordan Daigle (LSU) vs. #70 Tomas Stillman (UTSA) 5-7, 5-2, unfinished
2. Chris Simpson (LSU) def. Yannick Junger (UTSA) 6-2, 6-2
3. Boris Arias (LSU) def. Tito Moreiras (UTSA) 6-2, 6-4
4. Tam Trinh (LSU) vs. Joel Rubio (UTSA) 6-2, 3-5, unfinished
5. Andrew Korinek (LSU) vs. Joao Riquelme (UTSA) 4-6, 6-3, unfinished
6. Justin Butsch (LSU) def. Diogo Casa (UTSA) 6-4, 7-5

Doubles competition

1. #14 Jordan Daigle/Boris Arias (LSU) vs. #78 Tomas Stillman/Tito Moreiras (UTSA) 7-5, unfinished
2. Tam Trinh/Andrew Korinek (LSU) def. Yannick Junger/Diogo Casa (UTSA) 8-3
3. Chris Simpson/Justin Butsch (LSU) def. Joel Rubio/Jake Rother (UTSA) 8-2

#29 LSU 0, #2 Baylor 4

May 09, 2015 at Waco, Texas (Hawkins Indoor Tennis Center)

Singles competition

1. #102 Jordan Daigle (LSU) vs. #17 Julian Lenz (Baylor) unfinished
2. Chris Simpson (LSU) vs. Tony Lupieri (Baylor) unfinished
3. Boris Arias (LSU) vs. #56 Maxime Tchoutakin (Baylor) unfinished
4. Diego Galeano (Baylor) def. Tam Trinh (LSU) 6-4, 6-2
5. Mate Zsiga def. Andrew Korinek (LSU) 6-4, 6-0
6. Felipe Rios (Baylor) def. Simon Freund (LSU) 6-1, 6-1

Doubles competition

1. #8 Jordan Daigle/Boris Arias (LSU) def. Julian Lenz/Diego Galeano (Baylor) 8-5
2. Felipe Rios/Vince Schneider (Baylor) def. Tam Trinh/Andrew Korinek (LSU) 8-3
3. Maxime Tchoutakian/Mate Zsiga def. Chris Simpson/Justin Butsch (LSU) 8-6



LSU TENNIS

COMPLEX

In August 2015, the tennis programs opened the state-of-the-art LSU Tennis Complex. With more than 160,000 square feet of space, the facility features championship-caliber courts with 12 outdoors and six indoors. Housed inside the indoor facility are players' lounges, locker rooms, cardio room, satellite training room and coaches' offices for both the men's and women's teams.

Dual matches will take place on the north side of the facility at the W.T. 'Dub' Robinson Championship courts. The six remaining outdoor courts are located on the south side and allow the facility to host two matches at one time.

Fans may enjoy all the action with excellent sight lines from a total of 1,400 seats facing the 12 outdoor courts. The six indoor courts allow the Tigers to host different tournaments in front of more than 300 fans above the playing surface. The new facility also guarantees that both teams will never miss a practice or match due to unfavorable weather conditions.

Point-by-point scoring is available through Daktronics scoreboards on all 18 courts within the facility for an enhanced fan experience. Each set of courts also features a larger scoreboard with scores from all six courts. Fans off-site can track live matches online through StatBroadcast (www.LSUstats.com), which is directly linked to each judge's controller.

Spectators will also benefit from a permanent concession stand located on the west side of the facility between the two sets of outdoor courts. Members of the media will be able to provide coverage in the press box facing the W.T. 'Dub'

Robinson Championship courts.

The LSU tennis programs are already reaping the benefits of the opening of the new facility. The men's team hosted a fall invitational in 2015, while the women will play host to the SEC Tournament in April 2016.

The LSU Tennis Complex is located on Gourrier Avenue across from LSU Baseball's Alex Box Stadium, Skip Bertman Field. The LSU Tennis Complex replaces W.T. 'Dub' Robinson Stadium, which had served as home of both men's and women's tennis programs since 1976.



The family of W.T. 'Dub' Robinson on the championship courts of the new LSU Tennis Facility.



Mike the Tiger statue is the focal point of the plaza in front of the LSU Tennis Complex on Gourrier Lane.



The new cardio room with weights, StairMaster and stationary bike.



The lobby that leads to the coaches' offices and indoor courts.



LSU administration, along with coaches of the men's and women's teams, at the facility ribbon cutting.



The new training room features a hot tub and cold tub for after practice and matches.



A three-time All-American, Ken Skupski has the fourth-most career wins in Tiger Tennis history.

Tigers

IN THE PROS



Success doesn't stop on the courts at LSU. Many former LSU tennis players have had success on the pro tour following their collegiate careers.



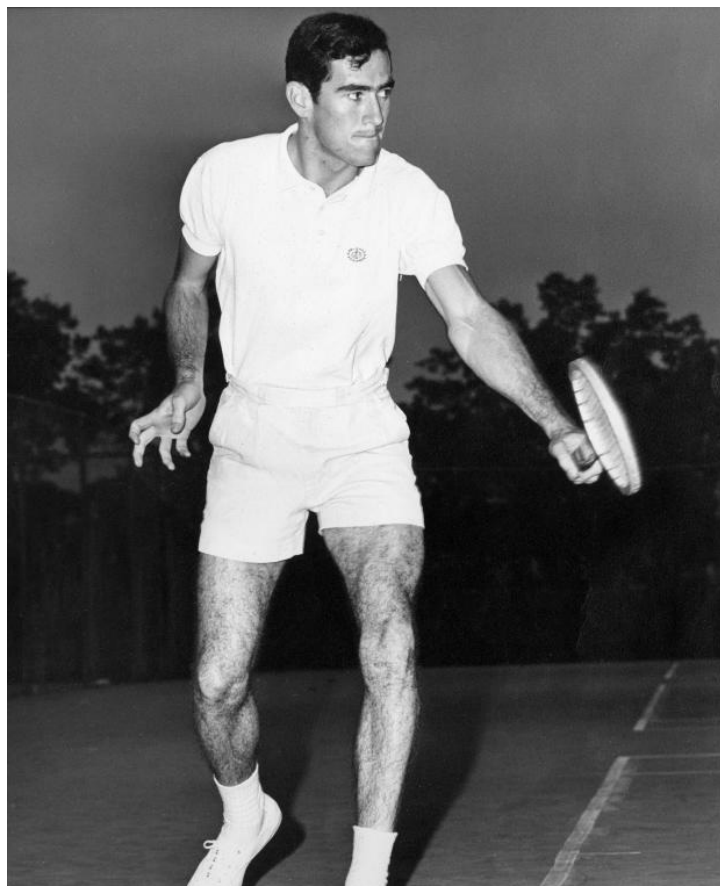
Former Tiger James Cluskey competed for his home country of Ireland's Davis Cup team.



Former LSU standout Michael Venus is a current member of New Zealand's Davis Cup team.

FORMER LSU PLAYERS Career Pro Tour Rankings

NAME	SINGLES	DOUBLES
Barrientos, Felix	180	n/a
Braga, Pedro	251	330
Brown, Jeff	831	47
Bryan, Danny	n/a	803
Chemla, Michael	341	591
Cluskey, James	801	145
El Sawy, Tamar	128	125
Faulk, Steve	107	n/a
Gaston, Colt	n/a	460
Hand, Tom	990	n/a
Holtari, Jane	550	558
Homedes, Carlos	636	394
Ideta, Ryan	760	575
Kiernan, Daniel	709	150
Kjellsten, Johan	318	431
Leaycraft, Donnie	509	957
Milbrink, Johan	690	680
Noonan, Jason	773	599
Pacheo, Mario	453	265
Perez, Fernando	356	169
Pesola, Juha	720	646
Ramaswami, Ajay	529	287
Richman, Peter	922	747
Skupski, Ken	527	80
Skupski, Neal	932	86
So, Roland	367	373
Uribe, Billy	226	92
Venus, Michael	843	42
Viator, Teddy	743	599
Wood, Steve	495	403



Steve Faulk career high pro singles ranking of No. 107 is highest by an LSU Tennis player.



Michael Venus (right) with doubles partner Mate Pavic after their 2015 ATP Doubles titles at the Open de Nice Côte d'Azur.

Coaching Records



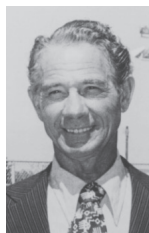
Paul Young
1925-1932



Charles Diel
1933-1942



Mike Donahue
1946-1947



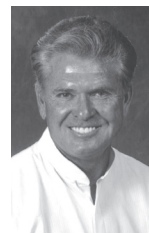
W.T. "Dub" Robinson
1948-1974, 1979



Steve Carter
1975-1978



Steve Strome
1980-1982



Jerry Simmons
1983-1997



Jeff Brown
1998-present

Paul Young

1925-1932 (8 years)
12-12-1 (.500)

Charles Diel

1933-1942 (10 years)
30-20-5 (.591)
SEC Championships: 1 (1940)

Mike Donahue

1946-1947 (2 years)
0-7 (.000)

W.T. "Dub" Robinson

1948-1974, 1979 (28 years)
189-180-9 (.512)
All-SEC Selections: 11
All-Americans: 1

Steve Carter

1975-1978 (4 years)
76-19 (.800)
SEC Championships: 1 (1976)
SEC Coach of the Year Honors: 1 (1978)
NCAA Championships Appearances: 1
All-SEC Selections: 4

Steve Strome

1980-1982 (3 years)
46-27 (.630)
All-SEC Selections: 2

Jerry Simmons

1983-1997 (15 years)
278-105 (.726)
SEC Championships: 1 (1985)
SEC Coach of the Year Honors: 2 (1988, 1997)
NCAA Championships Appearances: 13
All-Americans: 19
All-SEC Selections: 34

Jeff Brown

1998-present (18 years)
286-177 (.618)
SEC Championships: 2 (1998, 1999)
SEC Tournament Championships: 2 (1998, 1999)
SEC Coach of the Year Honors: 1 (1998)
SEC Player of the Year Honors: 2
Michal Chmela, 1998; Michael Venus, 2009
NCAA Championships Appearances: 15
SEC Scholar-Athlete of the Year Honors: 4
Bryan Fisher, 2004; Paul White, 2005;
Kevin Dessauer, 2007; Kevin Dessauer, 2008
All-Americans: 16
All-SEC Selections: 29

YEAR	W-L-T	SEC FINISH	POST SEASON	COACH
1925	3-0			Paul Young
1926	0-2			Paul Young
1927	1-2-1			Paul Young
1928	2-2			Paul Young
1929	3-2			Paul Young
1930	2-1			Paul Young
1931	1-1			Paul Young
1932	0-2			Paul Young
1933	2-1			Charles Diel
1934	0-4			Charles Diel
1935	2-2-1			Charles Diel
1936	2-3			Charles Diel
1937	2-2			Charles Diel
1938	3-2			Charles Diel
1939	4-1-2			Charles Diel
1940	10-1			Charles Diel
1941	4-3-1	2nd		Charles Diel
1942	1-1-1	2nd		Charles Diel
1946	0-4			Mike Donahue
1947	0-3			Mike Donahue
1948	5-4			Dub Robinson
1949	8-5-2			Dub Robinson
1950	8-7			Dub Robinson
1951	4-9			Dub Robinson
1952	11-4			Dub Robinson
1953	12-1	2nd		Dub Robinson
1954	9-1	2nd		Dub Robinson
1955	6-5	4th		Dub Robinson
1956	0-9	7th		Dub Robinson
1957	8-3-1	2nd		Dub Robinson
1958	6-5	2nd		Dub Robinson
1959	8-6	4th		Dub Robinson
1960	2-9	9th		Dub Robinson
1961	1-8-1	5th		Dub Robinson
1962	7-5	3rd		Dub Robinson
1963	2-8-1	6th		Dub Robinson
1964	5-7-1	7th		Dub Robinson
1965	5-8	7th		Dub Robinson
1966	6-6	6th		Dub Robinson
1967	6-4	5th		Dub Robinson
1968	5-8-1	5th		Dub Robinson
1969	7-7-1	6th		Dub Robinson
1970	6-8	5th		Dub Robinson
1971	8-6-1	7th		Dub Robinson
1972	6-11	7th		Dub Robinson

YEAR	W-L-T	SEC FINISH	POST SEASON	COACH
1973	8-8	7th		Dub Robinson
1974	14-5	3rd		Dub Robinson
1975	11-8	6th		Steve Carter
1976	21-6	1st		Steve Carter
1977	22-2	2nd		Steve Carter
1978	22-3	3rd	NCAA Final 16	Steve Carter
1979	16-7	3rd		Dub Robinson
1980	14-10	3rd		Steve Strome
1981	15-11	8th		Steve Strome
1982	17-6	7th		Steve Strome
1983	19-9	5th		Jerry Simmons
1984	19-10	5th	NCAA Final 16	Jerry Simmons
1985	19-8	1st	NCAA Final 16	Jerry Simmons
1986	17-8	3rd	NCAA Final 16	Jerry Simmons
1987	23-6	3rd	NCAA Final Eight	Jerry Simmons
1988	27-2	3rd	NCAA Runner-up	Jerry Simmons
1989	22-5	3rd	NCAA Final Eight	Jerry Simmons
1990	13-9	3rd	NCAA Final 16	Jerry Simmons
1991	19-6	2nd	NCAA Final Eight	Jerry Simmons
1992	17-7	2nd	NCAA Final Eight	Jerry Simmons
1993	16-6	3rd	NCAA Final Eight	Jerry Simmons
1994	10-13	9th		Jerry Simmons
1995	19-4	2nd	NCAA Final 16	Jerry Simmons
1996	21-5	4th	NCAA Final 16	Jerry Simmons
1997	17-7	3rd	NCAA Final 16	Jerry Simmons
1998	25-2	1st	NCAA Semifinal	Jeff Brown
1999	20-7	1st	NCAA Semifinal	Jeff Brown
2000	20-6	4th	NCAA Final 16	Jeff Brown
2001	16-8	3rd	NCAA Final 16	Jeff Brown
2002	11-14	11th	NCAA 2nd Round	Jeff Brown
2003	13-11	5th	NCAA 1st Round	Jeff Brown
2004	18-7	5th	NCAA 2nd Round	Jeff Brown
2005	21-9	7th	NCAA Final 16	Jeff Brown
2006	15-10	4th	NCAA 1st Round	Jeff Brown
2007	18-7	3rd	NCAA Final 16	Jeff Brown
2008	15-9	6th	NCAA 2nd Round	Jeff Brown
2009	11-12	8th	NCAA 2nd Round	Jeff Brown
2010	8-15	9th		Jeff Brown
2011	12-14	7th (tie)	NCAA 2nd Round	Jeff Brown
2012	15-11	6th (tie)	NCAA 2nd Round	Jeff Brown
2013	16-12	10th (tie)	NCAA 2nd Round	Jeff Brown
2014	14-14	13th		Jeff Brown
2015	18-9	7th	NCAA 2nd Round	Jeff Brown

TOTAL ALL-AMERICA HONORS - 44

(Singles - 25; Doubles - 19)

1970

Steve Faulk (Singles)

1984

Fernando Perez (Singles)

1985

Fernando Perez (Singles)

1987

Felix Barrientos (Singles)
Billy Uribe (Singles)

1988

Felix Barrientos (Singles, Doubles)
Jeff Brown (Doubles)
Donni Leaycraft (Singles)
Billy Uribe (Singles)

1989

Johan Kjellsten (Singles)
Donni Leaycraft (Singles)
Roland So (Singles)

1990

Tom Furukrantz (Singles, Doubles)
Mario Pacheco (Singles)

1992

Tamer El Sawy (Singles, Doubles)
Mario Pacheco (Singles, Doubles)

1993

Tamer El Sawy (Singles)
Juha Pesola (Singles, Doubles)
Michael Wesbrooks (Doubles)

1995

Pedro Braga (Singles)

1998

Michal Chmela (Singles, Doubles)
Tom Hand (Doubles)

1999

Michal Chmela (Singles)

2000

Michal Chmela (Doubles)
Dan Kiernan (Doubles)

2001

Ajay Ramaswami (Singles)

2005

Mark Growcott (Doubles)
Ken Skupski (Doubles)

2006

Ken Skupski (Singles)

2007

Danny Bryan (Doubles)
Colt Gaston (Doubles)
Ken Skupski (Singles)

2009

Neal Skupski (Doubles)
Michael Venus (Singles, Doubles)

2011

Sebastian Carlsson (Doubles)
Neal Skupski (Doubles)

2012

Neal Skupski (Singles)

2015

Boris Arias (Doubles)
Jordan Daigle (Doubles)

ITA SCHOLAR ATHLETES Selections - 28

1998

Thomas Hand
Jonas Samuelsson

2003

Bryan Fisher

ITA ALL-ACADEMIC TEAM 2004

Bryan Fisher
Paul White

2005

Kevin Dessauer
Mark Growcott
Ken Skupski
Paul White

2006

Eric De Roche
Kevin Dessauer
Ken Skupski

2007

Jan Zelezny
Kevin Dessauer
Ken Skupski

2008

Jan Zelezny
Kevin Dessauer
Sebastian Carlsson

2009

Sebastian Carlsson
Cody Loup

2010

Sebastian Carlsson
Stefan Szacinski

2012

James Turbervill

2013

Stefan Szacinski

2014

John Michael Busch

2015

Jordan Daigle
Harrison Kennedy
Andrew Korinek

TOTAL SEC ACADEMIC HONOR ROLL SELECTIONS - 121

1985

Jason Noonan

1986

Michael Hammett

1987

Michael Hammett

1988

Michael Hammett

1989

Johan Kjellsten

1991

Michael Wesbrooks

1992

Marcelo Achondo
Janne Holtari
Steve Vasquez
Thad Slaton
Michael Wesbrooks

1993

Juha Pesola
Michael Wesbrooks

1994

Janne Holtari
Juha Pesola

1995

Gus Fernandes

1996

Chad Dudley
Gus Fernandes
Eduardo Villagomez

1997

Gus Fernandes
Kirk Fisher
Jonas Samuelsson
Eduardo Villagomez

1998

Michal Chmela
Pedro Escudero
Kirk Fisher
Tom Hand

Ed Rubin
Jonas Samuelsson

1999

Michal Chmela
Tom Hand
Jonathan Hurd
Ed Rubin
Jonas Samuelsson

2000

Michal Chmela
Tom Hand
Jonathan Hurd
Anthony Mateljan
Ed Rubin
Samer Shamieh
Jesse Smatt

2001

Jonathan Hurd
Dan Kiernan
Anthony Mateljan
John Gray Pou
Ajay Ramaswami
John Sruk

2002

Jonathan Hurd
Dan Kiernan
Anthony Mateljan
John Gray Pou
Ajay Ramaswami

2003

Bryan Fisher
Jason Hazley
Daniel Kiernan
Sebastian Rutka

2004

Bryan Fisher
Jason Hazley
Cory Ross
Sebastian Rutka
Paul White

2005

Kevin Dessauer
Colt Gaston
Mark Growcott
Jason Hazley
Peter Richman
Ken Skupski
Paul White

2006

Eric DeRoche
Kevin Dessauer
Mark Growcott
Ken Skupski
Paul White

2007

Danny Bryan
Eric DeRoche
Kevin Dessauer
Colt Gaston

Ken Skupski
Jan Zelezny

2008

James Cluskey
Kevin Dessauer
Colt Gaston
Jan Zelezny

2009

Sebastian Carlsson
Julien Gauthier
Ryan Lissner
Cody Loup
David Roberts
Michael Venus

2010

Mark Bowtell
Sebastian Carlsson
Julien Gauthier
Cody Loup
David Roberts

2011

Olivier Borsos
Sebastian Carlsson
Julien Gauthier
Tom Knights
John Michaelis
David Roberts
Neal Skupski
Stefan Szacinski
James Turbervill

2012

Mark Bowtell
Tom Knights
David Roberts
Stefan Szacinski
James Turbervill

2013

Roger Anderson
Olivier Borsos
Mark Bowtell
Will Suk
Stefan Szacinski

2014

John Michael Busch
Harrison Kennedy
Andrew Korinek

2015

John Michael Busch
Jordan Daigle
Harrison Kennedy
Andrew Korinek
Tam Trinh

SEC TEAM CHAMPIONSHIPS - 5

YEAR	HEAD COACH	RECORD
1940	Charles Diel	10-1
1976	Steve Carter	21-6
1985	Jerry Simmons	19-8
1998	Jeff Brown	25-2
1999	Jeff Brown	20-7

SEC TOURNAMENT CHAMPIONS - 2

YEAR	RUNNER-UP	HOST
1998	Georgia	Auburn
1999	Georgia	Florida

SEC COACH OF THE YEAR - 4

YEAR	HEAD COACH	RECORD	SEC FINISH
1978	Steve Carter	22-3	3rd
1988	Jerry Simmons	27-2	3rd
1997	Jerry Simmons	17-7	3rd
1998	Jeff Brown	25-2	1st

SEC PLAYER OF THE YEAR - 2

YEAR	PLAYER
1998	Michal Chmela
2009	Michael Venus

SEC SCHOLAR-ATHLETE OF THE YEAR - 4

YEAR	PLAYER
2004	Bryan Fisher
2005	Paul White
2007	Kevin Dessauer
2008	Kevin Dessauer (Co-SEC Scholar-Athlete of the Year)

INDIVIDUAL SEC CHAMPIONS (SINGLES) - 18

YEAR	PLAYER
------	--------

No. 1 Singles

1970	Steve Faulk
1983	Fernando Perez
1986	Fernando Perez

No. 2 Singles

1940	L.C. Kirkland
1958	Tommy Robinson

No. 3 Singles

1954	Dave Rosenbaum
1976	Gary Albertine
1980	Mark Shoptaugh
1985	Billy Uribe

No. 4 Singles

1954	Ronnie Fenasci
1977	Drew Meyers
1985	Jeff Brown
1987	Donni Leaycraft
1988	Donni Leaycraft

No. 5 Singles

1958	John Robinson
1974	Johnny Foster
1985	Carlos Homodes

No. 6 Singles

1954	Benton Presslar
------	-----------------

INDIVIDUAL SEC CHAMPIONS (DOUBLES) - 8**No. 1 Doubles**

Year	Players
1962	Les Nicholson - Ernest Cox

No. 2 Doubles

1958	Larry Hammett - Buddy Gomez
1959	Tommy Robinson - Johnny Robinson
1968	Steve Faulk - Tommy Hudson
1977	Alan Chandronnait - Robert Rouse
1984	Steve Wood - Jason Noonan

No. 3 Doubles

1957	Larry Hammett - Buddy Gomez
1986	Jeff Brown - Jason Noonan

*No singles or doubles champions were recognized by the SEC following the 1989 season.

ALL-SEC SINGLES HONORS - 80

YEAR	PLAYER
1966	Robert Hubbard (Second Team)
1967	Bob Ecuyer (Second Team)
1968	Steve Faulk (First Team)
	Robert Hubbard (Second Team)
1969	Steve Faulk (First Team)
1970	Steve Faulk (First Team)
	Tommy Ducrest (Second Team)
1971	Tommy Ducrest (First Team)
1974	Gary Albertine
1976	Hal Gorman
1977	Alan Chandronnait
	Hal Gorman
1978	Hal Gorman
1979	Hal Gorman
	Mike Dransky
1980	Drew Meyers
	Mark Shoptaugh
1983	Fernandez Perez
	Teddy Viator
1984	Fernandez Perez
1985	Fernandez Perez (First Team)
	Carlos Homedes (Honorable Mention)
	Billy Uribe (Honorable Mention)
	Jeff Brown (Honorable Mention)
1986	Fernandez Perez
	Billy Uribe
1987	Felix Barrientos
	Donni Leaycraft
	Billy Uribe
1988	Felix Barrientos
	Jeff Brown
	Donni Leaycraft
	Billy Uribe
1989	Donni Leaycraft
	Johan Kjellsten
1990	Donni Leaycraft
1991	Johan Milbrink
1992	Tamer El Sawy
1993	Tamer El Sawy (First Team)
	Juha Pesola (Second Team)
	Michael Wesbrooks (Second Team)
1995	Pedro Braga (First Team)
	Zak Blanchard (Second Team)
1996	Gus Fernandes (First Team)
	Chad Dudley (Second Team)
	Ryan Ideta (Second Team)
1997	Pedro Escudero (Second Team)
	Michal Chmela (Second Team)
1998	Michal Chmela (First Team)
	Pedro Escudero (Second Team)
1999	Michal Chmela (First Team)
	Tom Hand (Second Team)
2000	Michal Chmela (First Team)
	Tom Hand (First Team)
2001	Ajay Ramaswami (First Team)
2002	Dan Kieman (Second Team)
2003	Jason Hazley (First Team)
	Bryan Fisher (First Team)
	Peter Richman (Second Team)
2004	Ken Skupski (First Team)
	Bryan Fisher (Second Team)
	Jason Hazley (Second Team)
2005	Ken Skupski (First Team)
	Mark Growcott (First Team)
2006	Ken Skupski (First Team)
2007	Ken Skupski (First Team)
	Danny Bryan (First Team)
	Kevin Dessauer (Second Team)
2008	Michael Venus (First Team)
	Kevin Dessauer (Second Team)

ALL-SEC SINGLES HONORS (CONTINUED)

Year	Player
2009	Michael Venus (First Team)
2010	Neal Skupski (Second Team)
2011	Neal Skupski (Second Team)
2012	Neal Skupski (Second Team)
	Olivier Borsos (Second Team)
2013	Chris Simpson (Second Team)
	Stefan Szacinski (Second Team)
2014	Chris Simpson (Second Team)
2015	Jordan Daigle (First Team)
	Chris Simpson (Second Team)

ALL-SEC DOUBLES HONORS - 6

Year	Players
1988	Jeff Brown - Felix Barrientos
1995	Pedro Braga - Zak Blanchard (Second Team)
1996	Chad Dudley - Ryan Ideta (Second Team)
1998	Michal Chmela - Tom Hand (Second Team)
2005	Mark Growcott - Ken Skupski (First Team)
2006	Danny Bryan - Colt Gaston (Second Team)

NCAA TOURNAMENT APPEARANCES - 30

Year	Head Coach	Final Ranking
1978	Steve Carter	12th
1984	Jerry Simmons	12th
1985	Jerry Simmons	9th
1986	Jerry Simmons	12th
1987	Jerry Simmons	8th
1988	Jerry Simmons	2nd
1989	Jerry Simmons	8th
1990	Jerry Simmons	11th
1991	Jerry Simmons	6th
1992	Jerry Simmons	10th
1993	Jerry Simmons	8th
1995	Jerry Simmons	9th
1996	Jerry Simmons	12th
1997	Jerry Simmons	9th
1998	Jeff Brown	2nd
1999	Jeff Brown	4th
2000	Jeff Brown	12th
2001	Jeff Brown	13th
2002	Jeff Brown	29th
2003	Jeff Brown	24th
2004	Jeff Brown	13th
2005	Jeff Brown	10th
2006	Jeff Brown	25th
2007	Jeff Brown	15th
2008	Jeff Brown	18th
2009	Jeff Brown	28th
2011	Jeff Brown	32nd
2012	Jeff Brown	25th
2013	Jeff Brown	22nd
2015	Jeff Brown	30th

LSU AT THE NCAA TEAM CHAMPIONSHIPS

Best Finish: 2nd (1988)

NCAA REGIONALS

Record: 17-6

1996 AT BATON ROUGE, LA.

First Round: LSU def. Kentucky, 4-1
Semifinal: LSU def. UAB, 4-2
Final: LSU def. Auburn, 4-3

1999 AT BATON ROUGE, LA.

Semifinal: LSU def. Alcorn State, 4-0
Final: LSU def. Tulane, 4-1

2000 AT BATON ROUGE, LA.

Semifinal: LSU def. Alcorn State, 4-0
Final: LSU def. Clemson, 4-0

2001 AT BATON ROUGE, LA.

Semifinal: LSU def. Marist, 4-0
Final: LSU def. Texas, 4-2

2002 AT COLLEGE STATION, TEXAS

Semifinal: LSU def. TCU, 4-0
Final: Texas A&M def. LSU, 4-0

2003 AT NEW ORLEANS, LA

First Round: South Alabama def. LSU, 4-2

2004 AT BATON ROUGE, LA.

First Round: LSU def. Southern, 4-0
Second Round: Rice def. LSU, 4-0

2005 AT BATON ROUGE, LA.

First Round: LSU def. Binghamton, 4-0
Second Round: LSU def. Tulane, 4-1

2006 AT CORAL GABLES, FLA.

First Round: Minnesota def. LSU, 4-2

2007 AT BATON ROUGE, LA.

First Round: LSU def. Alcorn State, 4-0
Second Round: LSU def. Vanderbilt, 4-0

2008 AT CHAMPAIGN, ILL.

First Round: LSU def. Drake, 4-1
Second Round: Illinois def. LSU, 4-2

2009 AT BATON ROUGE, LA.

First Round: LSU def. Rice, 4-0
Second Round: Ole Miss def. LSU, 4-2

NCAA CHAMPIONSHIPS

Record: 15-24

1978 AT ATHENS, GA.

First Round: Pepperdine def. LSU, 6-3

1984 AT ATHENS, GA.

First Round: UCLA def. LSU, 6-0

1985 AT ATHENS, GA.

First Round: Clemson def. LSU, 5-1

1986 AT ATHENS, GA.

First Round: SMU def. LSU, 5-2

1987 AT ATHENS, GA.

First Round: LSU def. Texas, 5-2
Second Round: USC def. LSU, 5-3

1988 AT ATHENS, GA.

First Round: Bye
Second Round: LSU def. California, 6-0
Quarterfinal: LSU def. Georgia, 5-3
Semifinal: LSU def. Michigan, 5-4
Final: Stanford def. LSU, 5-2

1989 AT ATHENS, GA.

First Round: Bye
Second Round: LSU def. Clemson, 5-3
Quarterfinal: Stanford def. LSU, 5-3

1990 AT PALM SPRINGS, CALIF.

First Round: California def. LSU, 5-3

1991 AT ATHENS, GA.

First Round: Bye
Second Round: LSU def. TCU, 5-2
Quarterfinal: California def. LSU, 5-2

1992 AT ATHENS, GA.

First Round: Bye
Second Round: LSU def. Pepperdine, 5-2
Quarterfinal: Stanford def. LSU, 5-2

1993 AT ATHENS, GA.

First Round: Bye
Second Round: Duke def. LSU, 5-2

1995 AT ATHENS, GA.

First Round: TCU def. LSU, 4-0

1996 AT ATHENS, GA.

First Round: TCU def. LSU, 4-3

1997 AT LOS ANGELES, CALIF.

First Round: Duke def. LSU, 4-1

1998 AT ATHENS, GA.

First Round: LSU def. SMU, 4-0
Quarterfinal: LSU def. Ole Miss, 4-0
Semifinal: Georgia def. LSU, 4-1

1999 AT ATHENS, GA.

First Round: LSU def. Fresno State, 4-1
Quarterfinal: LSU def. Duke, 4-3
Semifinal: UCLA def. LSU, 4-1

2000 AT ATHENS, GA.

First Round: Illinois def. LSU, 4-3

2001 AT ATHENS, GA.

First Round: Texas A&M def. LSU, 4-1

2005 AT COLLEGE STATION, TEXAS

First Round: Georgia def. LSU, 4-0

2007 AT ATHENS, GA.

First Round: Ohio State def. LSU, 4-0

2011 AT COLLEGE STATION, TEXAS

First Round: LSU def. Indiana, 4-3
Second Round: Texas A&M def. LSU, 4-0

2012 AT DURHAM, N.C.

First Round: LSU def. Northwestern, 4-0
Second Round: Duke def. LSU, 4-1

2013 AT MALIBU, CALIF.

First Round: LSU def. Stanford, 4-2
Second Round: Pepperdine def. LSU, 4-0

2015 AT WACO, TEXAS

First Round: LSU def. UTSA 4-0
Sound Round: Baylor



The 1998 & 1999 men's tennis teams won back-to-back SEC championships.

TEAM

Year	Head Coach	Final Ranking
1970	W.T. Robinson	16th
1973	W.T. Robinson	20th
1976	Steve Carter	20th
1978	Steve Carter	12th
1984	Jerry Simmons	12th
1985	Jerry Simmons	9th
1986	Jerry Simmons	12th
1987	Jerry Simmons	8th
1988	Jerry Simmons	2nd
1989	Jerry Simmons	8th
1990	Jerry Simmons	11th
1991	Jerry Simmons	6th
1992	Jerry Simmons	10th
1993	Jerry Simmons	8th
1994	Jerry Simmons	22nd
1995	Jerry Simmons	9th
1996	Jerry Simmons	12th
1997	Jerry Simmons	9th
1998	Jeff Brown	2nd
1999	Jeff Brown	4th
2000	Jeff Brown	12th
2001	Jeff Brown	14th
2002	Jeff Brown	29th
2003	Jeff Brown	24th
2004	Jeff Brown	13th
2005	Jeff Brown	10th
2006	Jeff Brown	25th
2007	Jeff Brown	15th
2008	Jeff Brown	18th
2009	Jeff Brown	28th
2010	Jeff Brown	46th
2011	Jeff Brown	32nd
2012	Jeff Brown	25th
2013	Jeff Brown	22nd
2015	Jeff Brown	30th

SINGLES

Year	Player	Final Ranking
1983	Fernando Perez	35th
	Teddy Viator	68th
	Fernando Perez	18th
1984	Teddy Viator	62nd
	Steve Wood	90th
	Fernando Perez	20th
1985	Billy Uribe	46th
	Steve Wood	81st
	Jason Noonan	80th
1986	Billy Uribe	44th
	Felix Barrientos	31st
	Donni Leaycraft	40th
1987	Jeff Brown	58th
	Felix Barrientos	20th
	Billy Uribe	28th
1988	Donni Leaycraft	36th
	Jeff Brown	39th
1989	Donni Leaycraft	3rd
	Johan Kjellsten	7th
	Roland So	40th
1990	Tom Furukrantz	83rd
	Tom Furukrantz	20th
	Johan Milbrink	31st
1991	Donni Leaycraft	46th
	Johan Milbrink	22nd
	Tamer El Sawy	43rd
1992	Janne Holtari	24th
	Mario Pacheco	69th
	Tamer El Sawy	16th
1993	Janne Holtari	24th
	Mario Pacheco	49th
	Tamer El Sawy	3rd

1993	Juha Pesola	56th
	Tamer El Sawy	3rd
	Juha Pesola	18th
1994	Michael Wesbrooks	82nd
	Pedro Braga	32nd
	Janne Holtari	58th
1995	Pedro Braga	18th
	Gus Fernandes	40th
	Ryan Ideta	65th
1996	Gus Fernandes	28th
	Pedro Braga	93rd
	Pedro Escudero	25th
1997	Michal Chmela	33rd
	Michal Chmela	6th
	Pedro Escudero	34th
1998	Pedro Braga	76th
	Michal Chmela	12th
	Tom Hand	39th
1999	Tom Hand	24th
	Michal Chmela	30th
	Ajay Ramaswami	100th
2000	Ajay Ramaswami	16th
	Dan Kiernan	51st
	Dan Kiernan	53rd
2001	Bryan Fisher	113th
	Peter Richman	62nd
	Ken Skupski	34th
2002	Ken Skupski	40th
	Ken Skupski	19th
	Ken Skupski	20th
2003	Danny Bryan	40th
	Kevin Dessauer	92nd
	Michael Venus	31st
2004	Jan Zelezny	110th
	Michael Venus	7th
	Neal Skupski	47th
2005	Sebastian Carlsson	109th
	Neal Skupski	87th
	Neal Skupski	37th
2006	Olivier Borsos	40th
	Chris Simpson	102nd
	Chris Simpson	47th
2007	Stefan Szacinski	103rd
	Chris Simpson	77th
	Jordan Daigle	82nd

DOUBLES

1983	Fernando Perez - Steve Wood	26th
	Steve Wood - Jason Noonan	18th
	Billy Uribe - Carlos Homedes	33rd
1984	Billy Uribe - Carlos Homedes	40th
	Felix Barrientos - Jeff Brown	44th
	Felix Barrientos - Jeff Brown	4th
1985	Mario Pacheco - Ged Schwing	17th
	Mario Pacheco - Tom Furukrantz	10th
	Mario Pacheco - Tamer El Sawy	23rd
1986	Mario Pacheco - Tamer El Sawy	12th
	Janne Holtari - Steve Vasquez	26th
	Juha Pesola - Michael Wesbrooks	11th
1987	Tamer El Sawy - Alex Guevara	27th
	Pedro Braga - Zak Blanchard	18th
	Chad Dudley - Ryan Ideta	19th
1988	Michal Chmela - Tom Hand	30th
	Zak Blanchard-Eduardo Villagomez	49th
	Tom Hand - Michal Chmela	8th
1989	Tom Hand - Ed Rubin	43rd
	Michal Chmela - Dan Kiernan	14th
	Dan Kiernan - Sebastian Rutka	29th
1990	Bryan Fisher - Jason Hazley	21st
	Bryan Fisher - Jason Hazley	15th
	Sebastian Rutka - Cory Ross	51st
1991	Ken Skupski - Mark Growcott	4th
	Ken Skupski - Mark Growcott	17th
	Colt Gaston - Danny Bryan	43rd

2006	James Cluskey - Ken Skupski	24th
	James Cluskey - Michael Venu	14th
	Michael Venus - Neal Skupski	4th
2007	Sebastian Carlsson - Neal Skupski	38th
	Roger Anderson - Neal Skupski	77th
	Sebastian Carlsson - Neal Skupski	10th
2008	Neal Skupski - Chris Simpson	30th
	Olivier Borsos - Chris Simpson	83rd
	Stefan Szacinski - Tam Trinh	59th
2009	Chris Simpson - Stefan Szacinski	81st
	Chris Simpson- Boris Arias	43rd
	Tam Trinh- Eric Perez	46th
2010	Boris Arias-Jordan Daigle	12th
	Boris Arias-Jordan Daigle	12th
	Boris Arias-Jordan Daigle	12th

BEST FINISHES

Team

2nd (1988, 1998)

Singles

3rd (Donni Leaycraft - 1989, Tamer El Sawy - 1993)

Doubles

4th (Felix Barrientos & Jeff Brown - 1988, Ken Skupski & Mark Growcott - 2005, Michael Venus & Neal Skupski - 2009)

Opponent History

LSU

Opponent	Record	Percentage	Last Meeting
Alabama	42-26-1	.612	2015
UAB	1-0-0	1.000	1996
Alcorn State	6-0-0	1.000	2015
Arkansas	27-5-0	.839	2015
Arizona	1-0-0	1.000	1987
Arizona State	2-0-0	1.000	1987
Auburn	32-16-0	.660	2015
Austin Peay	1-0-0	1.000	1981
B.R. Tennis Club	2-1-0	.667	1955
Baylor	6-1-1	.857	2015
Binghamton	1-0-0	1.000	2005
Birmingham Southern	1-1-0	.500	1948
Brigham Young	1-0-0	1.000	1982
Boise State	1-0-0	1.000	2005
Butler	1-0-0	1.000	1982
California	6-4-0	.600	2012
UC-Irvine	0-2-0	.000	1990
Centenary	20-0-0	1.000	2008
Central Michigan	2-0-0	1.000	1980
Cincinnati	1-0-0	1.000	1954
Clemson	7-7-0	.500	2012
Colorado	3-0-0	1.000	2006
Cornell College	1-0-0	1.000	1949
Denver	1-0-0	1.000	1953
Drake	1-0-0	1.000	2008
Duke	3-4-0	.429	2012
Eastern Michigan	1-0-0	1.000	1976
Emory	1-0-0	1.000	1940
Florida	28-28-1	.509	2015
Florida State	8-6-0	.571	2010
Fresno State	1-0-0	1.000	1999
Furman	2-1-0	.667	1971
Georgia	18-49-0	.273	2015
Georgia Tech	13-9-1	.587	1976
Gulfport Navy	0-2-0	.000	1946
Gustavus Adolphus	1-0-0	1.000	1936
Harvard	2-1-0	.667	1994
Houston	7-18-3	.304	1983
Howard	0-1-0	.000	1948
Illinois	5-5-0	.500	2008
Illinois State	2-0-0	1.000	2012
Indiana	3-3-0	.500	2013
Indiana State	2-0-0	1.000	2000
Iowa	2-0-0	1.000	1976
Jacksonville	3-0-0	1.000	1978
Jackson State	2-0-0	1.000	2015
Jacksonville State	1-0-0	1.000	1952
Kalamazoo College	0-1-0	.000	1963
Kansas	5-0-0	1.000	1988
Kentucky	31-17-0	.638	2015
Lake Charles AFB	2-0-0	1.000	1953
Lamar	22-9-0	.700	2015
Liberty	1-0-0	1.000	2014
Louisiana-Lafayette	19-0-0	1.000	2012
Louisiana-Monroe	3-0-0	1.000	2002
Louisiana College	9-2-0	.818	1985
Louisiana Tech	1-0-0	1.000	1933
Louisville	1-0-0	1.000	2010
Loyola (New Orleans)	12-3-0	.800	1955
Marist	1-0-0	1.000	2001
McNeese State	1-0-0	1.000	1986
Memphis	5-3-0	.625	1982
Miami (Fla.)	8-6-0	.571	1998
Miami (Ohio)	2-0-0	1.000	1981
Michigan	5-3-0	.625	2014
Michigan State	5-0-0	1.000	1999
Mid. Tenn. State	1-0-0	1.000	1980
Millsaps	1-0-0	1.000	1930
Minnesota	6-3-0	.667	2012
Mississippi	46-18-0	.730	2015
Mississippi State	46-21-1	.697	2015
Missouri	2-0-0	1.000	1977
Murray State	1-1-0	.500	1965

Opponent	Record	Percentage	Last Meeting
Nebraska	1-0-0	1.000	2011
New Mexico	2-0-0	1.000	2002
New Mexico State	1-0-0	1.000	1982
New Orleans	27-0-0	1.000	2015
Nicholls State	4-0-0	1.000	2015
North Carolina	0-2-0	.000	1993
North Florida	1-0-0	1.000	2014
North Texas	1-0-0	1.000	1983
Northern Illinois	1-0-0	1.000	1969
Northwestern	5-4-0	.556	2012
Northwestern State	7-0-0	1.000	1952
Notre Dame	4-1-0	.800	1996
Ohio State	5-9-0	.357	2013
Oklahoma	5-1-0	.833	1982
Oklahoma City	1-0-0	1.000	1983
Oklahoma State	5-3-0	.625	1991
Pensacola Navy	3-5-0	.375	1958
Pepperdine	4-7-0	.364	1992
Presbyterian	0-2-0	.000	1971
Principia	1-0-0	1.000	1977
Purdue	3-0-0	1.000	2015
Rhodes College	2-0-0	1.000	1967
Rice	16-17-2	.468	2015
Richmond	1-0-0	1.000	1983
St. Edward's	2-0-0	1.000	1965
Sewanee	0-1-0	.000	1949
South Alabama	6-1-0	.857	2003
South Carolina	28-10-0	.750	2015
South Florida	11-0-0	1.000	2013
Southern	17-0-0	1.000	2008
Southern California	2-7-0	.222	2000
Southern Illinois	8-1-0	.889	1989
Southern Methodist	5-8-0	.385	2003
Southern Miss	25-0-0	1.000	2014
Southeastern La.	11-0-0	1.000	2005
Spring Hill	1-0-0	1.000	1938
Stanford	1-5-0	.167	1998
Stephen F. Austin	1-0-0	1.000	1985
St. John's	1-0-0	1.000	2012
Tennessee	32-29-1	.517	2015
Texas	10-16-1	.370	2004
Texas A&M	20-25-0	.441	2015
Texas A&M-CC	0-1-0	.000	1966
Texas-Arlington	2-0-0	1.000	1996
Texas Christian	6-12-0	.353	2015
Texas El-Paso	1-0-0	1.000	1988
Texas-Pan American	4-0-0	1.000	1996
Texas-San Antonio	3-0-0	1.000	2015
Texas State	2-0-0	1.000	2005
Texas Tech	3-0-0	1.000	2009
Trinity	0-6-0	.000	1983
Tulane	30-45-2	.397	2015
Tulsa	4-2-0	.667	2003
UCLA	0-6-0	.000	2006
Univ. of San Diego	1-0-0	1.000	2015
Vanderbilt	46-19-1	.703	2015
Virginia	0-1-0	.000	2010
Wake Forest	2-1-0	.667	2014
West Florida	4-0-0	1.000	1997
West State College	1-0-0	1.000	1938
West Texas A&M	1-0-0	1.000	1984
Wichita State	0-1-0	.000	1981
William & Mary	0-1-0	.000	1980
Wisconsin	3-0-0	1.000	1981
Wright State	1-0-0	1.000	2013
Others	4-4-0	.500	-

1925

3-0

Head Coach: Paul Young

1926

0-2

Head Coach: Paul Young

1927

1-2-1

Head Coach: Paul Young

1928

2-2

Head Coach: Paul Young

1929

3-2

Head Coach: Paul Young

1930

2-1

Head Coach: Paul Young

1931

1-1

Head Coach: Paul Young

1932

0-2

Head Coach: Paul Young

1933

2-1

Head Coach: Charles Diel

1934

1-4

Head Coach: Charles Diel

1935

2-2-1

Head Coach: Charles Diel

1936

2-3

Head Coach: Charles Diel

1937

2-2

Head Coach: Charles Diel

1938

3-2

Head Coach: Charles Diel

1939

4-1-2

Head Coach: Charles Diel

1940

10-1

Head Coach: Charles Diel
SEC Champions**1941**

4-3-1

Head Coach: Charles Diel
SEC Runner-up**1942**

1-1-1

Head Coach: Charles Diel

1946

0-4

Head Coach: Mike Donahue

1947

0-3

Head Coach: Mike Donahue

1948

5-4

Head Coach: W.T. "Dub" Robinson

1949

8-5-2

Head Coach: W.T. "Dub" Robinson

1950

8-7

Head Coach: W.T. "Dub" Robinson

1951

4-9

Head Coach: W.T. "Dub" Robinson

1952

11-4

Head Coach: W.T. "Dub" Robinson

1953

12-1

Head Coach: W.T. "Dub" Robinson
SEC Runner-up**1954**

9-1

Head Coach: W.T. "Dub" Robinson
SEC Runner-up**1955**

6-5

Head Coach: W.T. "Dub" Robinson
SEC Finish: 4th**1956**

0-9

Head Coach: W.T. "Dub" Robinson
SEC Finish: 7th**1957**

8-3-1

Head Coach: W.T. "Dub" Robinson
SEC Runner-up**1958**

6-5

Head Coach: W.T. "Dub" Robinson
SEC Runner-up**1959**

8-6

Head Coach: W.T. "Dub" Robinson
SEC Finish: 4th**1960**

2-9

Head Coach: W.T. "Dub" Robinson
SEC Finish: 9th**1961**

1-8-1

Head Coach: W.T. "Dub" Robinson
SEC Finish: 5th**1962**

7-5

Head Coach: W.T. "Dub" Robinson
SEC Finish: 3rd**1963**

2-8-1

Head Coach: W.T. "Dub" Robinson
SEC Finish: 6th**1964**

5-7-1

Head Coach: W.T. "Dub" Robinson
SEC Finish: 7th**1965**

5-8

Head Coach: W.T. "Dub" Robinson
SEC Finish: 7th**1966**

6-6

Head Coach: W.T. "Dub" Robinson
SEC Finish: 5th**1967**

6-4

Head Coach: W.T. "Dub" Robinson
SEC Finish: 5th**1968**

5-8-1

Head Coach: W.T. "Dub" Robinson
SEC Finish: 5th**1969**

7-7-1

Head Coach: W.T. "Dub" Robinson
SEC Finish: 6th**1970**

6-8

Head Coach: W.T. "Dub" Robinson
SEC Finish: 5th
Final Ranking: 16th**1971**

8-6-1

Head Coach: W.T. "Dub" Robinson
SEC Finish: 7th**1972**

6-11

Head Coach: W.T. "Dub" Robinson
SEC Finish: 7th**1973**

8-8

Head Coach: W.T. "Dub" Robinson
SEC Finish: 7th
Final Ranking: 20th**1974**

14-5

Head Coach: W.T. "Dub" Robinson
SEC Finish: 3rd**1975**

11-8

Head Coach: Steve Carter
SEC Finish: 6th**1976**

21-6

Head Coach: Steve Carter
SEC Champions**1977**

22-2

Head Coach: Steve Carter
SEC Runner-up**1978**

22-3

Head Coach: Steve Carter
SEC Finish: 3rd
Final Ranking: 12th
NCAA Final 16
SEC Coach of the Year**1979**

16-7

Head Coach: W.T. "Dub" Robinson
SEC Finish: 3rd

1980

14-10
Head Coach: Steve Strome
SEC Finish: 3rd

1981

15-11
Head Coach: Steve Strome
SEC Finish: 8th

1982

17-6
Head Coach: Steve Strome
SEC Finish: 7th

1983

19-9
Head Coach: Jerry Simmons
SEC Finish: 5th

1984

19-10
Head Coach: Jerry Simmons
SEC Finish: 5th
Final Ranking: 12th
NCAA Final 16
National Indoor Round of 16

1985

19-8
Head Coach: Jerry Simmons
SEC Champions
Final Ranking: 9th
NCAA Final 16

1986

17-8
Head Coach: Jerry Simmons
SEC Finish: 3rd
Final Ranking: 12th
NCAA Final 16
National Indoor Round of 16

1987

23-6
Head Coach: Jerry Simmons
SEC Finish: 3rd
Final Ranking: 8th
NCAA Final Eight
National Indoor Quarterfinalist

1988

27-2
Head Coach: Jerry Simmons
SEC Regular Season Champions
SEC Finish: 3rd
Final Ranking: 2nd
NCAA Runner-up
National Indoor Runner-up
SEC Coach of the Year

1989

22-5
Head Coach: Jerry Simmons
SEC Regular Season Champions
SEC Finish: 3rd
Final Ranking: 8th
NCAA Final Eight
National Indoor Quarterfinalist

1990

13-9
Head Coach: Jerry Simmons
SEC Finish: 3rd
Final Ranking: 16th
NCAA Final 16
National Indoor Quarterfinalist

1991

19-6
Head Coach: Jerry Simmons
SEC Runner-up
Final Ranking: 6th
NCAA Final Eight
National Indoor Quarterfinalist

1992

17-7
Head Coach: Jerry Simmons
SEC Regular Season Champions
SEC Tournament Runner-up
SEC Finish: 2nd
Final Ranking: 10th
NCAA Final Eight

1993

16-6
Head Coach: Jerry Simmons
SEC Finish: 3rd
Final Ranking: 8th
NCAA Final Eight
National Indoor Quarterfinalist

1994

10-13
Head Coach: Jerry Simmons
SEC Finish: 9th
National Indoor Round of 16

1995

19-4
Head Coach: Jerry Simmons
SEC Runner-up
Final Ranking: 8th
NCAA Final 16

1996

21-5
Head Coach: Jerry Simmons
SEC Finish: 4th
Final Ranking: 14th
NCAA Final 16
NCAA Region III Champions

1997

17-7
Head Coach: Jerry Simmons
SEC Finish: 3rd
Final Ranking: 9th
NCAA Final 16
National Indoor Round of 16
SEC Coach of the Year

1998

25-2
Head Coach: Jeff Brown
SEC Champions
Final Ranking: 2nd
NCAA Runner-up
NCAA Semifinal
National Indoor Quarterfinalist
SEC Coach of the Year
SEC Tournament Champions

1999

20-7
Head Coach: Jeff Brown
SEC Champions
Final Ranking: 4th
NCAA Semifinal
SEC Coach of the Year
SEC Tournament Champions

2000

20-6
Head Coach: Jeff Brown
SEC Finish: 4th
Final Ranking: 12th
NCAA Final 16

2001

16-8
Head Coach: Jeff Brown
SEC Finish: 3rd
Final Ranking: 13th
NCAA Final 16

2002

11-14
Head Coach: Jeff Brown
SEC Finish: 11th
Final Ranking: 29th
NCAA 2nd Round

2003

13-11
Head Coach: Jeff Brown
SEC Finish: 5th
Final Ranking: 24th
NCAA 1st Round

2004

18-7
Head Coach: Jeff Brown
SEC Finish: 5th
Final Ranking: 13th
NCAA 2nd Round

2005

21-9
Head Coach: Jeff Brown
SEC Finish: 7th
Final Ranking: 10th
NCAA Final 16

2006

15-10
Head Coach: Jeff Brown
SEC Finish: 4th
Final Ranking: 25th
NCAA 1st Round

2007

18-7
Head Coach: Jeff Brown
SEC Finish: 3rd
Final Ranking: 15th
NCAA Final 16

2008

15-9
Head Coach: Jeff Brown
SEC Finish: 6th
Final Ranking: 19th
NCAA 2nd Round

2009

11-12
Head Coach: Jeff Brown
SEC Finish: 8th
Final Ranking: 28th
NCAA 2nd Round

2010

8-15
Head Coach: Jeff Brown
SEC Finish: 9th
Final Ranking: 46th
SEC Tournament Second Round

2011

12-14
Head Coach: Jeff Brown
SEC Finish: 7th (tie)
Final Ranking: 32nd
SEC Tournament Second Round

2012

15-11
Head Coach: Jeff Brown
SEC Finish: 6th (tie)
Final Ranking: 25th
NCAA 2nd Round

2013

16-12
Head Coach: Jeff Brown
SEC Finish: 10th (tie)
Final Ranking: 22nd
NCAA 2nd Round

2014

14-14
Head Coach: Jeff Brown
SEC Finish: 13th
Final Ranking: 46th
SEC Tournament Quarterfinals

2015

18-9
Head Coach: Jeff Brown
SEC Finish: 7th
Final Ranking: 30th
NCAA 2nd Round

Year-By-Year Results

1925 (3-0)

COACH: PAUL YOUNG

Alabama	W	3-0
Louisiana College	W	3-0
Louisiana College	W	3-0

1926 (0-2)

COACH: PAUL YOUNG

Tulane	L	1-5
Tulane	L	1-2

1927 (1-2-1)

COACH: PAUL YOUNG

Tulane	L	1-5
Tulane	L	2-4
Alabama	T	3-3
USL	W	6-0

1928 (2-2)

COACH: PAUL YOUNG

Tulane	L	0-6
North Carolina	L	1-2
Louisiana College	W	6-0
USL	W	4-2

1929 (3-2)

COACH: PAUL YOUNG

USL	W	4-2
Louisiana College	W	4-2
Loyola (New Orleans)	W	5-1
Tulane	L	1-5
Alabama	L	1-5

1930 (2-1)

COACH: PAUL YOUNG

Ole Miss	L	2-4
Millsaps	W	4-2
Louisiana College	W	4-2

1931 (1-1)

COACH: PAUL YOUNG

USL	W	6-0
Alabama	L	1-5

1932 (0-2)

COACH: CHARLES DIEHL

Tulane	L	0-6
Tulane	L	0-6

1933 (2-1)

COACH: CHARLES DIEHL

Louisiana Tech	W	6-0
Louisiana College	W	5-1
Louisiana College	L	2-4

1934 (0-4)

COACH: CHARLES DIEHL

Rice	L	1-5
Tulane	L	1-5
Rice	L	0-6
Tulane	L	0-6

1935 (2-2-1)

COACH: CHARLES DIEHL

Northwestern State	W	6-0
Rice	T	3-3
Louisiana College	W	6-0
Tulane	L	2-6
Tulane	L	2-6

1936 (2-3)

COACH: CHARLES DIEHL

Louisiana College	L	2-4
Mississippi State	W	7-0
Furman	L	3-4
Gustavus Adolphus	W	6-0
Tulane	L	0-6

1937 (2-2)

COACH: CHARLES DIEHL

Furman	W	6-0
Alabama	W	6-0
Tulane	L	0-6
Rice	L	2-4

1938 (3-2)

COACH: CHARLES DIEHL

Illinois	W	4-2
Baylor	W	4-2
Spring Hill	W	5-1
Tulane	L	0-6
Alabama	L	2-4

1939 (4-1-2)

COACH: CHARLES DIEHL

West State College	W	5-1
Alabama	W	4-2
Illinois	W	6-0
Rice	T	3-3
Ole Miss	W	4-1
Tulane	L	0-6
Baylor	T	3-3

1941 (4-3-1)

COACH: CHARLES DIEHL

SEC RUNNER-UP		
Colorado	W	6-0
Texas	L	2-4
Rice	W	5-1
Florida	L	2-5
Alabama	W	6-0
Tulane	L	2-3
Tulane	T	3-3
Louisiana College	W	4-2

1942 (1-1-1)

COACH: CHARLES DIEHL

Rice	L	2-4
Tulane	W	2-1
Tulane	T	3-3

1943-45 - No Team

1946 (0-4)

COACH: MIKE DONAHUE

Tulane	L	0-6
Gulfport Navy	L	0-6
Tulane	L	0-6
Gulfport Navy	L	3-6

1947 (0-3)

COACH: MIKE DONAHUE

Tulane	L	0-6
Miami (Fla.)	L	0-6
Rice	L	0-6

1948 (5-4)

COACH: W.T. ROBINSON

Northwestern State	W	7-2
Baton Rouge Tennis Club	L	3-9
Loyola	W	4-3
Northwestern State	W	6-1
Loyola	W	7-1
Mississippi State	W	7-2
Tulane	L	0-6
Birmingham Southern	L	3-4
Howard	L	2-5

1949 (8-5-2)

COACH: W.T. ROBINSON

Northwestern State	W	6-0
Pensacola Navy	L	3-4
Florida	L	1-6
Baton Rouge Tennis Club	W	8-4
Loyola	W	4-1

Cornell of Iowa	W	3-0
Pensacola Navy	W	6-1
Loyola	W	5-1
Georgia Tech	T	3-3
Vanderbilt	L	1-7
Ole Miss	W	7-0
Tulane	L	1-6
Mississippi State	W	7-0
Florida	T	3-3
Sewanee	L	1-4

1950 (8-7)

COACH: W.T. ROBINSON

Baylor	W	5-2
Pensacola Navy	L	2-5
Mississippi State	W	7-2
Georgia	W	6-3
Georgia Tech	W	6-3
Loyola	L	3-4
Loyola	W	4-3
Mississippi State	W	4-3
Houston	L	0-6
Florida	L	0-9
Tulane	L	1-6
Alabama	W	6-3
Southwestern (Tenn.)	W	7-2
Alabama	L	2-7
Vanderbilt	L	3-6

1951 (4-9)

COACH: W.T. ROBINSON

Northwestern State	W	7-2
Tulane	L	0-9
Alabama	L	0-8
Mississippi State	W	8-1
Vanderbilt	L	2-7
Mississippi State	W	9-0
Loyola	L	3-6
Loyola	L	0-5
Georgia	L	4-5
Georgia Tech	W	6-3
Houston	L	0-6
SMU	L	0-6
Pensacola Navy	L	4-5

1952 (11-4)

COACH: W.T. ROBINSON

Lamar	W	6-0
Loyola	W	6-3
Loyola	W	4-3
Norhtwestern State	W	7-0
Vanderbilt	L	3-6
Tennessee	L	3-6
TCU	W	5-1
Pensacola Navy	L	3-6
Mississippi State	W	6-3
Georgia Tech	W	5-4
Georgia	W	9-0
Lake Charles AFB	W	7-0
Tulane	L	0-9
Alabama	W	8-1
Jacksonville State	W	9-0

1953 (12-1)

COACH: W.T. ROBINSON

SEC RUNNER-UP		
Lamar	W	5-1
Mississippi State	W	5-1
Denver	W	7-2
Florida State	W	8-1
Houston	W	5-1
Alabama	W	9-0
Vanderbilt	W	6-2
Loyola	W	5-2
Tennessee	W	7-2
Georgia Tech	W	9-0
Lake Charles AFB	W	9-0

Loyola	W	6-1
Tulane	L	1-7

1954 (9-1)

COACH: W.T. ROBINSON

SEC RUNNER-UP		
Lamar	W	4-3
Texas A&M	W	12-1
Vanderbilt	W	9-0
Florida State	W	8-2
Cincinnati	W	8-2
Tennessee	W	9-0
Mississippi State	W	9-0
Loyola	W	4-1
Tulane	L	3-6
Georgia Tech	W	9-0

1955 (6-5)

COACH: W.T. ROBINSON

Pensacola Navy	L	3-6
Baton Rouge Tennis Club	W	6-3
Northwestern	W	7-2
Tennessee	W	5-4
Vanderbilt	W	7-2
Lamar	L	0-9
Houston	L	0-9
Tulane	L	0-9
Florida	L	3-5
Loyola	W	6-1
Georgia Tech	W	8-1

1956 (0-9)

COACH: W.T. ROBINSON

Lamar	L	0-5
Texas A&M	L	3-6
Northwestern	L	1-5
Presbyterian	L	1-5
Vanderbilt	L	2-7
Georgia Tech	L	3-6
Rice	L	3-6
Houston	L	3-6
Tulane	L	0-9

1957 (8-3-1)

COACH: W.T. ROBINSON

SEC RUNNER-UP		
Pensacola Navy	W	9-0
Lamar	L	1-8
Houston	T	3-3
Illinois	W	9-0
Mississippi State	W	8-0
Vanderbilt	W	9-0
Miami (Fla.)	L	0-6
Georgia Tech	W	8-1
Georgia	W	8-1
Tulane	L	2-7
Tennessee	W	9-0
Florida	W	7-2

1958 (6-5)

COACH: W.T. ROBINSON

SEC RUNNER-UP		
Lamar	L	0-9
Houston	L	2-5
Northwestern	W	9-0
Vanderbilt	W	9-0
Florida State	W	7-2
Pensacola Navy	W	6-0
Miami (Fla.)	L	2-7
Lamar	L	3-6
Tulane	L	4-5
Georgia Tech	W	7-2
Georgia	W	8-1

1959 (8-6)

COACH: W.T. ROBINSON

Lamar	L	2-5
Lamar	L	1-5
Georgia	L	2-7
Georgia Tech	L	2-7
Houston	W	7-2
Tulane	L	0-9
Florida	W	6-3
Florida State	W	6-3
Texas	W	4-2
Miami (Fla.)	L	2-7
Ole Miss	W	7-2
Vanderbilt	W	8-1
Tennessee	W	6-3
Duke	W	5-4

1960 (2-9)

COACH: W.T. ROBINSON

Southern Miss	W	9-0
Vanderbilt	L	3-6
Northwestern	L	2-7
Florida State	L	0-9
Florida	L	0-9
Mississippi State	L	0-9
Houston	L	0-6
Texas	L	0-6
Georgia Tech	L	1-8
Ole Miss	W	6-0
Tulane	L	1-8

1961 (1-8-1)

COACH: W.T. ROBINSON

Southern Illinois	W	4-2
Northwestern	L	3-5
Texas	L	1-5
Mississippi State	L	3-6
Vanderbilt	L	4-5
Rice	L	1-5
Florida State	L	1-8
Tulane	L	0-8
Lamar	L	0-5
Houston	T	3-3

1962 (7-5)

COACH: W.T. ROBINSON

Northwestern	L	1-8
Vanderbilt	L	4-5
Houston	W	6-0
Texas	L	0-6
Rice	L	0-6
Mississippi State	W	8-1
Kentucky	W	9-0
Georgia Tech	W	8-1
Texas A&M	W	5-2
Ole Miss	W	9-0
Southern Miss	W	7-2
Tulane	L	0-9

1963 (2-8-1)

COACH: W.T. ROBINSON

Kalamazoo College	L	3-6
Texas	L	0-6
Houston	L	0-5
Texas A&M	L	0-9
Vanderbilt	T	4-4
Ole Miss	W	5-4
Mississippi State	L	0-9
Rice	L	0-6
Alabama	L	1-8
Southern Miss	W	7-2
Tulane	L	0-9

1964 (5-7-1)

COACH: W.T. ROBINSON

Texas A&M	L	4-5
Kentucky	W	9-0
Vanderbilt	W	7-2
Rice	L	1-5
Texas	L	0-7
St. Edward's	W	6-1
Mississippi State	L	0-9
Murray State	W	7-2
Ole Miss	W	9-0
Georgia Tech	L	3-6
Houston	T	3-3
Alabama	L	2-7
Tulane	L	1-8

1965 (5-8)

COACH: W.T. ROBINSON

Houston	L	1-5
Texas A&M	L	0-6
St. Edward's	W	3-2
Alabama	L	4-5
Rice	L	0-7
Georgia Tech	L	0-9
Murray State	L	1-8
Ole Miss	W	9-0
Memphis State	W	8-1
Vanderbilt	W	7-2
Tennessee	L	0-9
Southern Miss	W	6-3
Tulane	L	0-9

1966 (6-6)

COACH: W.T. ROBINSON

Houston	W	4-2
Vanderbilt	W	9-0
Texas A&M	L	1-8
Oklahoma	W	4-3
Mississippi State	L	2-7
Corpus Christi	L	1-8
Tennessee	L	1-8
Georgia Tech	L	3-6
Ole Miss	W	8-1
Alabama	W	7-2
Southern Miss	W	5-0
Tulane	L	0-9

1967 (6-4)

COACH: W.T. ROBINSON

Rice	W	4-2
Texas A&M	W	8-1
Southwestern (Tenn.)	W	9-1
Illinois	W	4-3
Georgia Tech	L	4-5
Tennessee	L	0-9
Houston	W	4-3
Mississippi State	L	0-8
Ole Miss	W	8-1
Tulane	L	0-9

1968 (5-8-1)

COACH: W.T. ROBINSON

Lamar	L	3-6
Mississippi State	L	1-6
Georgia	L	3-6
Michigan State	W	5-4
Michigan State	W	6-3
Oklahoma	W	4-3
USL	W	8-1
Ole Miss	W	7-2
Florida	L	2-8
Tennessee	T	2-2
Georgia Tech	L	2-7
Texas	L	2-5
Houston	L	2-4
Tulane	L	0-9

1969 (7-7-1)

COACH: W.T. ROBINSON

Florida State	L	2-7
Houston	L	4-5
Texas	T	3-3
Minnesota	L	2-7
Northwestern	W	5-4
Lamar	W	9-0
Texas A&M	L	2-7
Kansas	W	3-4
USL	W	8-1
Northern Illinois	W	9-0
Florida	L	1-8
Tennessee	L	3-6
Tulane	L	0-9
Mississippi State	W	5-4
Ole Miss	W	8-1

1970 (6-8)

COACH: W.T. ROBINSON

FINAL RANKING: NO. 16

Florida State	L	3-6
Texas	L	3-6
Houston	L	0-9
Texas A&M	W	5-4
Southern Illinois	L	2-7
Vanderbilt	L	4-5
South Florida	W	7-2
Alabama	W	8-1
Florida	W	6-3
Tennessee	L	1-8
Georgia	L	0-9
Georgia Tech	L	4-5
Lamar	W	7-2
Tulane	W	6-3

1971 (8-6-1)

COACH: W.T. ROBINSON

Furman	W	6-3
Memphis State	L	3-6
Houston	W	4-3
William & Mary	W	9-0
Lamar	W	5-4
Texas A&M	L	2-7
Mississippi State	T	3-3
Georgia	L	0-9
Vanderbilt	W	7-2
Kentucky	W	6-3
Tennessee	W	5-4
Presbyterian	L	3-6
Tulane	L	2-6
Ole Miss	W	9-0
Alabama	L	3-6

1972 (6-11)

COACH: W.T. ROBINSON

Lamar	W	5-4
Texas A&M	L	1-8
Indiana	L	2-7
Indiana	L	4-5
Ole Miss	W	9-0
Alabama	L	1-8
Mississippi State	L	4-5
Georgia	L	1-8
Texas	L	1-8
Houston	L	1-8
Vanderbilt	W	8-1
Kentucky	L	2-7
Florida	L	1-8
Tennessee	L	1-8
Georgia Tech	W	7-2
Alabama	W	5-4
Tulane	W	6-3

1973 (8-8)

COACH: W.T. ROBINSON

FINAL RANKING: NO. 20

Houston	L	2-7
Georgia	L	0-9
Notre Dame	W	7-2
Missouri	W	8-1
Ole Miss	W	9-0
Oklahoma State	W	9-0
Alabama	L	3-6
South Carolina	W	6-3
Texas A&M	L	3-6
Texas	L	2-7
Lamar	W	6-3
Vanderbilt	W	8-1
Florida	L	3-6
Tennessee	L	4-5
Kentucky	W	7-2
Tulane	L	2-7

1974 (14-5)

COACH: W.T. ROBINSON

Lamar	W	8-1
Texas A&M	L	3-6
Mississippi State	W	9-0
Texas	L	1-8
Michigan State	W	9-0
Ohio State	W	6-3
Oklahoma	W	7-2
Northwestern	W	9-0
Auburn	W	8-1
Florida	L	4-5
Kentucky	W	7-2
Tennessee	L	2-7
Ole Miss	W	7-2
Memphis State	W	7-2
Vanderbilt	W	9-0
Alabama	W	5-4
Georgia	L	3-6
Georgia Tech	W	9-0
Tulane	W	9-0

1975 (11-8)

COACH: STEVE CARTER

Rice	W	8-1
Texas A&M	L	4-5
Trinity	L	1-8
Kansas	W	8-1
Iowa	W	6-3
Houston	L	2-7
Clemson	W	7-2
Florida State	L	2-7
Miami (Fla.)	L	1-8
Florida	L	2-7
Auburn	W	5-2
Tennessee	W	7-2
Kentucky	W	5-4
Ole Miss	W	9-0
Vanderbilt	W	9-0
Mississippi State	W	6-3
Alabama	L	3-6
Georgia	L	1-8
Tulane	W	6-3

1977 (22-2)

COACH: STEVE CARTER

SEC RUNNER-UP

Rice	W	9-0
Vanderbilt	W	7-2
Lamar	W	8-1
Texas A&M	W	9-0
Texas	L	4-5
Memphis State	W	5-4
Oklahoma State	W	8-1
Missouri	W	8-1
Clemson	W	8-1
Principia	W	9-0

Year-By-Year Results

Michigan State	W	9-0
Southern Illinois	W	8-1
Florida	W	7-2
Jacksonville	W	9-0
Tennessee	W	6-3
South Florida	W	7-2
New Orleans	W	9-0
USL	W	9-0
Tulane	W	6-3
Ole Miss	W	8-1
Auburn	W	6-3
Mississippi State	W	7-2
Alabama	W	7-2
Georgia	L	4-5

1978 (20-3)

COACH: STEVE CARTER

NCAA TOURNAMENT - FINAL 16

FINAL RANKING: NO. 12

Texas A&M	W	9-0
Northeast Louisiana	W	8-1
Trinity	L	1-8
Lamar	W	8-1
Tennessee	W	8-1
Jacksonville	W	8-1
Southern Illinois	W	7-2
Wisconsin	W	7-2
Mississippi State	W	7-2
Auburn	W	7-2
Illinois State	W	7-2
Minnesota	W	9-0
Clemson	L	4-5
Rice	W	7-2
Army	W	9-0
Alabama	W	7-2
Ole Miss	W	7-2
Vanderbilt	W	5-4
New Orleans	W	9-0
USL	W	8-1
Tulane	W	8-1
Georgia	W	5-4

NCAA FIRST ROUND

Pepperdine	L	3-6
------------	---	-----

1979 (16-7)

COACH: W.T. ROBINSON

Baylor	W	9-0
Clemson	L	4-5
Oklahoma State	L	3-6
Texas Pan American	W	5-4
Arkansas	L	0-9
Southern Illinois	W	6-3
Rice	W	6-3
TCU	L	4-5
Central Michigan	W	9-0
Oklahoma	W	6-3
Houston	L	1-8
Lamar	W	8-1
Texas A&M	W	6-3
Wisconsin	W	5-1
Minnesota	W	5-1
Clemson	L	1-8
Trinity	L	0-9
Army	W	8-1
Memphis	L	4-5
Georgia	L	4-5
Alabama	W	8-1
Auburn	W	5-4
Florida	L	2-7
USL	W	5-4
New Orleans	W	6-0
Tulane	W	7-2
Ole Miss	W	9-0
Vanderbilt	W	5-4

1980 (14-10)

COACH: STEVE STROME

Texas A&M	L	4-5
Lamar	W	7-2
Mississippi State	L	4-5
William & Mary	W	9-0
Central Michigan	W	8-1
Oklahoma	W	7-2
Middle Tennessee	W	8-1
Miami (Ohio)	W	8-1
Centenary	W	9-0
Georgia	L	1-8
Tennessee	L	4-5
Memphis	L	3-6
Ole Miss	W	9-0
Rice	L	4-5
Houston	L	4-5
Tulane	W	8-1
Florida	W	8-1
USL	W	9-0
Alabama	L	3-6
Trinity	L	1-8
South Alabama	W	8-1
Auburn	L	4-5
Kentucky	W	5-4

1981 (15-11)

COACH: STEVE STROME

Rice	L	4-5
Austin Peay	W	6-3
Lamar	W	7-2
New Mexico	W	9-0
Houston	L	1-8
Michigan	W	5-4
Texas Pan American	W	6-3
Wichita State	L	1-5
Oklahoma State	L	2-7
Indiana State	W	8-1
Southern Illinois	W	7-2
Kansas	W	8-1
Miami (Ohio)	W	7-2
Wisconsin	W	9-0
Georgia	L	2-7
South Carolina	L	3-6
Centenary	W	7-2
South Alabama	W	5-4
Mississippi State	W	6-3
Alabama	L	2-7
Auburn	L	2-7
Florida	L	3-6
Ole Miss	L	4-5
Tulane	W	8-1
Tennessee	L	2-7
Kentucky	W	7-2

1982 (17-6)

COACH: STEVE STROME

New Orleans	W	8-1
Florida State	W	7-2
Pepperdine	L	2-7
Oklahoma	L	4-5
Arizona State	W	6-3
Brigham Young	W	6-3
Butler	W	9-0
Pan American	W	5-4
Texas Tech	W	7-2
New Mexico State	W	6-2
Florida	W	5-4
Memphis	W	7-2
Alabama	L	4-5
Mississippi State	W	7-2
Ole Miss	W	6-3
Vanderbilt	L	3-6
Tennessee	L	3-6
Georgia	L	2-7
South Alabama	W	5-4
Auburn	W	6-3

Lamar	W	8-1
Tulane	W	7-2
Kentucky	W	5-4

1983 (19-9)

COACH: JERRY SIMMONS

Tulsa	W	6-3
Arkansas	L	3-6
Clemson	L	2-7
North Texas	W	7-2
Southwest Texas State	W	5-1
Texas A&M	L	4-5
Houston	W	9-0
Oklahoma City	W	6-3
Minnesota	W	6-3
Texas	L	0-6
Texas A&M	L	2-5
Tulsa	L	4-5
Purdue	W	8-1
Richmond	W	8-1
Kentucky	W	5-4
USL	W	8-1
Georgia	W	5-4
Alabama	W	7-2
Auburn	L	1-5
Florida	W	8-1
Tennessee	L	3-6
Rice	W	5-4
Vanderbilt	W	5-4
Florida State	W	6-3
New Orleans	W	6-0
New Orleans	W	9-0
Ole Miss	W	7-2
Trinity	L	1-8

1984 (19-10)

COACH: JERRY SIMMONS

NCAA TOURNAMENT

NATIONAL INDOOR ROUND OF 16

FINAL RANKING: NO. 12

Auburn	W	5-4
Georgia	L	4-5
Pepperdine	L	4-5
SMU	L	2-6
Texas	L	1-8
USL	W	9-0
Texas A&M	W	7-2
Florida State	W	5-1
USC	L	1-8
UCLA	L	1-8
Tulane	W	9-0
New Orleans	W	9-0
New Orleans	W	6-0
Indiana	W	9-0
Alabama	W	6-3
West Texas State	W	5-1
Centenary	W	9-0
Ohio State	W	9-0
Vanderbilt	W	9-0
Mississippi State	W	8-1
Pepperdine	L	4-5
Florida	W	6-3
Georgia	L	3-6
Kentucky	W	6-3
Ohio State	W	8-1
Auburn	L	1-8
Tennessee	W	6-2
Ole Miss	W	7-2
NCAA FIRST ROUND		
UCLA	L	0-6

1985 (19-8)

COACH: JERRY SIMMONS

SEC CHAMPIONS

FINAL RANKING: NO. 9

Arkansas	W	5-4
Clemson	W	5-1
USC	L	3-5
Harvard	W	5-2
Pepperdine	L	3-5
Louisiana College	W	8-1
Centenary	W	8-1
Stanford	L	4-5
Lamar	W	9-0
Pepperdine	L	1-8
USC	L	1-8
New Orleans	W	8-1
Stephen F. Austin	W	6-0
Purdue	W	9-0
Ole Miss	W	8-1
Tulsa	W	9-0
SMU	L	3-6
Mississippi State	W	9-0
Alabama	W	6-3
Kentucky	W	7-2
New Orleans	W	9-0
Georgia	L	4-5
Auburn	W	6-3
Vanderbilt	W	9-0

NCAA FIRST ROUND

Clemson	L	1-5
---------	---	-----

1986 (17-7)

COACH: JERRY SIMMONS

NCAA TOURNAMENT FINAL 16

NATIONAL INDOOR ROUND OF 16

FINAL RANKING: NO. 12

Tulane	W	8-1
McNeese State	W	7-2
UCLA	L	2-7
California	L	2-5
Minnesota	L	3-5
Arkansas	W	5-4
New Orleans	W	9-0
Vanderbilt	W	9-0
Lamar	W	8-1
Arkansas	L	2-7
Oklahoma State	W	7-2
South Carolina	W	8-1
TCU	W	5-4
Florida	W	6-3
Pepperdine	L	3-6
Clemson	L	3-6
Auburn	W	6-3
Ole Miss	W	8-1
Alabama	W	5-4
New Orleans	W	6-0
Georgia	L	3-6
Tennessee	W	5-4
Kentucky	W	5-4
Mississippi State	W	9-0
NCAA FIRST ROUND		
SMU	L	2-5

1987 (23-6)

COACH: JERRY SIMMONS

NCAA FINAL EIGHT

NATIONAL INDOOR QUARTERFINALIST

FINAL RANKING: NO. 8

Arizona	W	7-2
Minnesota	W	5-2
Oklahoma State	W	5-1
Lamar	W	9-0
Tulane	W	8-1
Pepperdine	W	5-1
Georgia	L	4-5
SMU	W	5-1
SMU	L	2-7

Arizona State	W	6-3
Miami (Fla.)	W	7-2
Wake Forest	W	6-0
Arkansas	W	8-1
Southern Illinois	W	9-0
TCU	L	4-5
Kentucky	W	8-1
Mississippi State	W	8-1
California	W	5-4
Ole Miss	W	9-0
Florida	W	7-2
Auburn	W	6-3
Alabama	W	5-4
Georgia	L	2-7
Vanderbilt	W	8-1
Tennessee	W	6-3
South Carolina	L	3-6
NCAA SECOND ROUND		
Texas	W	5-2
NCAA QUARTERFINALS		
USC	L	3-5

1988 (27-2)

COACH: JERRY SIMMONS

SEC REG. SEASON CHAMPIONS

NATIONAL INDOOR RUNNER-UP

NCAA RUNNER-UP

FINAL RANK: NO. 2

Indiana	W	5-1
SMU	W	7-2
Clemson	W	7-2
Miami	W	9-0
Texas A&M	W	9-0
SMU	W	5-2
California	W	5-3
Pepperdine	W	5-1
Georgia	W	6-2
USC	L	3-5
Kansas	W	9-0
South Carolina	W	6-0
Alabama	W	8-1
South Florida	W	9-0
TCU	W	7-2
California	W	7-2
Florida	W	8-1
Mississippi State	W	7-2
Auburn	W	6-3
Texas El-Paso	W	5-1
Vanderbilt	W	9-0
Georgia	W	5-4
Kentucky	W	5-4
Tennessee	W	7-2
Ole Miss	W	5-1

NCAA SECOND ROUND

California W 6-0

NCAA QUARTERFINALS

Georgia W 5-3

NCAA SEMIFINALS

Michigan W 5-4

NCAA FINAL

Stanford L 2-5

1989 (22-5)

COACH: JERRY SIMMONS

SEC REG. SEASON CHAMPIONS

NATIONAL INDOOR QUARTERFINALIST

NCAA FINAL EIGHT

FINAL RANK: NO. 8

South Alabama	W	9-0
Texas	W	6-3
Tulane	W	9-0
Southern Miss	W	6-0
USL	W	8-1
South Carolina	L	3-5
Miami	W	5-3
Pepperdine	W	5-1
Baylor	W	8-1
Ole Miss	W	8-1

Texas A&M	W	7-0
Southern Illinois	W	8-0
Vanderbilt	W	7-2
Texas	W	5-1
Georgia	W	5-4
TCU	L	1-5
Miami	W	6-3
Alabama	W	6-3
Kentucky	W	5-4
South Carolina	W	5-4
Tennessee	L	4-5
UC-Irvine	L	2-7
Mississippi State	W	8-1
Auburn	W	6-3
Florida	W	6-3

NCAA SECOND ROUND

Clemson W 5-3

NCAA QUARTERFINALS

Stanford L 3-5

1990 (13-9)

COACH: JERRY SIMMONS

NCAA FINAL 16

NATIONAL INDOOR QUARTERFINALIST

FINAL RANK: NO. 16

South Alabama	W	6-0
Texas	W	5-3
Tulane	W	9-0
Harvard	W	5-3
UC-Irvine	L	4-5
Miami	L	1-5
Texas	L	4-5
Southern Miss	W	6-0
South Carolina	W	5-2
TCU	L	4-5
Mississippi State	W	5-1
Alabama	L	4-5
Kentucky	W	5-2
Auburn	W	5-2
Ole Miss	W	5-4
Vanderbilt	W	8-1
Tennessee	L	1-5
Georgia	L	3-5
Florida	W	5-1

SEC TOURNAMENT

Florida W 6-0

Georgia L 2-5

NCAA FIRST ROUND

California L 3-5

1991 (19-6)

COACH: JERRY SIMMONS

SEC RUNNER-UP

NATIONAL INDOOR QUARTERFINALIST

NCAA FINAL EIGHT

FINAL RANK: NO. 6

Tulane	W	9-0
Baylor	W	9-0
Oklahoma State	W	9-0
Florida	L	2-7
Southern Miss	W	6-0
California	W	5-4
USC	L	1-5
Miami	W	5-2
Texas	W	5-3
Mississippi State	W	5-3
Texas	W	5-4
TCU	L	2-5
Texas-San Antonio	W	5-1
South Carolina	W	5-2
Kentucky	L	3-5
Alabama	W	5-1
Georgia	W	5-3
Ole Miss	W	5-2
Tennessee	W	5-2
Auburn	W	5-2
Vanderbilt	W	9-0

SEC TOURNAMENT

Ole Miss W 5-3

Mississippi State L 3-5

NCAA SECOND ROUND

TCU W 5-3

NCAA QUARTERFINALS

California L 2-5

1992 (17-7)

COACH: JERRY SIMMONS

SEC REG. SEASON CHAMPIONS

SEC TOURNAMENT RUNNER-UP

NATIONAL INDOOR QUARTERFINALIST

NCAA FINAL EIGHT

FINAL RANK: NO. 10

Tulane	W	8-0
Vanderbilt	W	6-1
Southern Miss	W	9-0
Baylor	W	9-0
South Alabama	W	9-0
California	W	5-1
Notre Dame	L	1-4
UCLA	L	2-4
Mississippi State	L	4-5
South Carolina	W	6-0
TCU	L	4-5
Florida	W	5-4
Arkansas	W	6-0
Alabama	W	8-1
Auburn	W	8-1
Ole Miss	W	6-0
Kentucky	L	1-5
Georgia	W	5-1
Tennessee	W	7-2

SEC TOURNAMENT*

Florida W 5-2

Georgia W 5-1

Kentucky L 2-5

NCAA SECOND ROUND

Pepperdine W 5-2

NCAA QUARTERFINALS

Stanford L 2-5

1993 (16-6)

COACH: JERRY SIMMONS

NCAA FINAL EIGHT

NATIONAL INDOOR QUARTERFINALIST

FINAL RANK: NO. 8

Lamar	W	7-0
Centenary	W	7-0
Southern Miss	W	7-0
Colorado	W	7-0
Stanford	W	4-3
North Carolina	L	3-4
Mississippi State	W	4-3
TCU	L	3-4
Vanderbilt	W	7-0
Ole Miss	W	5-0
South Carolina	W	4-2
Auburn	W	5-2
Georgia	L	3-4
Notre Dame	W	5-2
Mississippi State	L	2-5
Alabama	W	6-1
Kentucky	W	5-1
Arkansas	W	4-0
Tennessee	W	6-1
Florida	W	6-0

SEC TOURNAMENT

Tennessee L 3-4

NCAA SECOND ROUND

Duke L 2-5

1994 (10-13)

COACH: JERRY SIMMONS

NATIONAL INDOOR ROUND OF 16

Tulane	W	7-0
West Florida	W	7-0
Lamar	W	7-0
Centenary	W	5-2
Southern Miss	W	6-1
Duke	L	2-5
USC	L	1-5
Harvard	L	2-5
TCU	L	2-5
Ole Miss	L	0-4
Alabama	L	1-6
Mississippi State	L	3-4
South Carolina	W	4-2
Notre Dame	W	5-2
Vanderbilt	L	2-4
Arkansas	W	4-1
Auburn	L	3-4
Florida	L	1-6
Georgia	L	2-5
Tennessee	W	5-2
Kentucky	L	3-4

SEC TOURNAMENT

South Carolina W 4-2

Florida L 3-4

1995 (19-4)

COACH: JERRY SIMMONS

SEC RUNNER-UP

FINAL RANK: NO. 8

New Orleans	W	7-0
Southern	W	7-0
West Florida	W	6-0
Centenary	W	7-0
Southeastern Louisiana	W	6-0
Texas Tech	W	7-0
Tulane	W	7-0
Florida	W	5-2
South Carolina	W	6-1
Ole Miss	W	5-2
Auburn	L	3-4
Georgia	L	2-5
Kentucky	W	5-2
Vanderbilt	W	6-1
Mississippi State	W	4-3
Tennessee	W	5-1
Arkansas	W	6-1
Alabama	W	5-1

SEC CHAMPIONSHIP

Auburn W 4-1

Mississippi State W 4-3

Georgia L 0-4

NCAA FIRST ROUND

TCU L 4-0

1996 (21-5)

COACH: JERRY SIMMONS

NCAA FINAL 16

NCAA REGION III CHAMPIONS

FINAL RANK: NO. 14

Notre Dame	W	4-2
New Orleans	W	7-0
West Florida	W	7-0
Southern	W	7-0
Southeastern Louisiana	W	7-0
Southern Miss	W	7-0
Ole Miss	L	2-4
Alabama	W	6-1
Centenary	W	7-0
Texas-Pan American	W	7-0
Texas-Arlington	W	7-0
South Carolina	W	7-0
Arkansas	W	5-2
Florida	L	3-4
Mississippi State	W	5-2

Year-By-Year Results

Auburn	W	5-2
Vanderbilt	W	4-1
Tennessee	W	5-2
Kentucky	W	4-3
Georgia	L	4-0
SEC TOURNAMENT		
Auburn	W	4-1
Georgia	L	1-4
NCAA REGION III CHAMPIONSHIPS		
Kentucky	W	4-1
UAB	W	4-2
Auburn	W	4-3
NCAA FIRST ROUND		
TCU	L	4-3

1997 (17-7)

COACH: JERRY SIMMONS

NCAA FINAL 16

NATIONAL INDOOR ROUND OF 16

FINAL RANK: NO. 9

Centenary	W	7-0
Southern	W	7-0
New Orleans	W	7-0
USL	W	7-0
West Florida	W	6-1
Vanderbilt	W	6-1
Pepperdine	L	3-4
Stanford	L	1-6
Columbia	W	4-1
Florida	W	4-3
Southern Miss	W	6-1
South Carolina	W	5-1
Alabama	W	4-3
Ole Miss	W	6-1
Mississippi State	L	1-6
Tennessee	W	7-0
Arkansas	W	6-0
Kentucky	W	4-1
Auburn	L	3-4
Georgia	L	2-4

SEC TOURNAMENT

Kentucky	W	4-0
Georgia	L	2-4
Miami (Fla.)	W	4-2

NCAA FIRST ROUND

Duke	L	1-4
------	---	-----

1998 (25-2)

COACH: JEFF BROWN

SEC CHAMPIONS

SEC TOURNAMENT CHAMPIONS

NCAA SEMIFINALIST

NATIONAL INDOOR QUARTERFINALIST

FINAL RANK: NO. 2

Southern	W	7-0
Centenary	W	7-0
Miami (Fla.)	W	6-1
Southeastern Louisiana	W	7-0
New Orleans	W	7-0
Texas A&M	W	4-3
USC	W	4-1
Stanford	L	7-0
Duke	W	6-1
Southern Miss	W	6-1
South Carolina	W	5-2
Florida	W	4-3
Auburn	W	5-2
Mississippi State	W	5-2
Vanderbilt	W	7-0
Ole Miss	W	5-2
Arkansas	W	4-0
Alabama	W	4-0
Georgia	W	5-2
Tennessee	W	4-3
Kentucky	W	6-1
SEC TOURNAMENT		
Auburn	W	4-1
Ole Miss	W	4-1

Georgia	W	4-3
NCAA FIRST ROUND		
SMU	W	4-0
NCAA QUARTERFINAL		
Ole Miss	W	4-0
NCAA SEMIFINAL		
Georgia	L	4-1

1999 (20-7)

COACH JEFF BROWN

SEC CHAMPIONS

SEC TOURNAMENT CHAMPIONS

NCAA SEMIFINALIST

NATIONAL RANK: NO. 4

Southeastern Louisiana	W	7-0
Southern	W	6-0
Centenary	W	6-0
Mississippi State	W	4-3
Southern Miss	W	7-0
Texas A&M	L	6-1
Michigan State	W	5-2
Vanderbilt	L	4-3
Ole Miss	L	5-2
Indiana	L	4-3
South Carolina	W	4-3
Florida	W	4-3
Kentucky	L	5-2
Tennessee	L	4-3
South Florida	W	5-2
Georgia	W	4-3
Alabama	W	6-1
Auburn	W	5-2
Arkansas	W	7-0

SEC TOURNAMENT

Tennessee	W	4-1
South Carolina	W	4-1
Georgia	W	4-3

NCAA REGIONAL

Alcorn State	W	4-0
Tulane	W	4-1

NCAA FIRST ROUND

Fresno State	W	4-1
NCAA SECOND ROUND		
Duke	W	4-3

NCAA SEMIFINAL

UCLA	L	4-1
------	---	-----

2000 (20-6)

COACH JEFF BROWN

NCAA FINAL 16

NATIONAL RANK: NO. 12

Southern	W	6-0
Centenary	W	7-0
New Orleans	W	6-1
USC	W	4-3
Tennessee	L	4-3
Indiana State	W	4-3
Southern Miss	W	5-2
Mississippi State	W	5-2
South Alabama	W	7-0
Florida	L	4-2
Texas A&M	W	5-2
Vanderbilt	W	6-1
Alabama	W	7-0
Tulane	W	7-0
South Carolina	W	7-0
Ole Miss	W	6-1
Arkansas	W	5-2
SMU	W	5-2
Tennessee	L	5-2
Auburn	W	4-3
Kentucky	W	5-2
Georgia	L	6-0
SEC TOURNAMENT		
Georgia	L	4-1
NCAA REGIONAL		
Alcorn State	W	4-0
Clemson	W	4-0

NCAA FIRST ROUND		
Illinois	L	4-3

2001 (16-8)

COACH: JEFF BROWN

NCAA FINAL 16

NATIONAL RANK: NO. 13

Southern	W	7-0
Centenary	W	7-0
Southeastern Louisiana	W	7-0
Louisiana-Monroe	W	7-0
Texas A&M	L	4-3
Louisiana-Lafayette	W	7-0
Mississippi State	L	5-2
Southern Miss	W	6-1
Vanderbilt	W	6-1
Arkansas	W	4-3
Kentucky	W	4-3
Georgia	L	4-3
Texas-Arlington	W	7-0
Auburn	L	4-3
Florida	W	4-3
South Carolina	L	4-2
SMU	L	4-2
Alabama	W	5-2
Mississippi	W	4-3

SEC TOURNAMENT

Alabama	L	4-3
---------	---	-----

NCAA REGIONAL

Marist	W	4-0
Texas	W	4-2

NCAA FIRST ROUND

Texas A&M	L	4-1
-----------	---	-----

2002 (11-14)

COACH: JEFF BROWN

NCAA SECOND ROUND

NATIONAL RANK: NO. 29

Centenary	W	7-0
Southern	W	6-0
New Mexico	W	5-2
Illinois	L	5-2
Alabama	L	4-1
Auburn	L	4-1
Texas A&M	L	4-2
South Carolina	L	5-2
Florida	L	4-3
Tennessee	L	5-2
Georgia	L	4-0
Southern Miss	W	6-1
South Florida	W	5-2
Vanderbilt	L	4-3
Kentucky	L	4-2
SMU	L	4-3
Mississippi State	W	5-2
Ole Miss	L	4-3
Arkansas	W	4-3
Louisiana-Monroe	W	7-0
Southern	W	5-0

SEC TOURNAMENT

Alabama	W	4-2
Auburn	L	4-0

NCAA REGIONAL

TCU	W	4-0
Texas A&M	L	4-0

2003 (13-11)

COACH: JEFF BROWN

NCAA FIRST ROUND

NATIONAL RANK: NO. 24

Centenary	W	7-0
Southern	W	7-0
Texas-San Antonio	W	6-1
Southern	W	6-0
Southeastern	W	6-1
Texas A&M	L	2-5
Tulsa	W	6-1
Alabama	L	1-6

Auburn	W	6-1
South Carolina	L	3-4
Florida	L	0-7
Tennessee	W	4-3
Georgia	L	3-4
Texas	W	4-3
Vanderbilt	L	2-5
Kentucky	W	4-2
Mississippi State	W	4-3
Ole Miss	L	1-5
Illinois	L	1-6
Arkansas	W	7-0
SMU	L	3-4

SEC TOURNAMENT

Arkansas	W	4-0
----------	---	-----

Kentucky	L	1-4
----------	---	-----

NCAA REGIONAL

South Alabama	L	4-2
---------------	---	-----

2004 (18-7)

COACH: JEFF BROWN

NCAA SECOND ROUND

NATIONAL RANK: NO. 13

Southern Miss	W	7-0
Southern	W	6-1
Louisiana-Lafayette	W	5-2
Southeastern Louisiana	W	7-0
Centenary	W	6-0
Texas	W	5-2
New Orleans	W	6-1
Georgia	L	3-4
Tennessee	W	4-3
Texas A&M	W	5-2
Kentucky	L	6-1
Vanderbilt	W	5-2
Ole Miss	L	3-4
Miss. State	W	6-1
Auburn	W	4-3
Alabama	W	6-1
Tulane	L	5-2
Arkansas	W	5-2
Tulsa	W	6-1
Florida	L	2-5
South Carolina	W	4-1

SEC CHAMPIONSHIPS

Alabama	W	4-0
Kentucky	L	4-0

NCAA REGIONAL

Southern	W	4-0
Rice	L	4-0

2005 (21-9)

COACH: JEFF BROWN

NCAA FINAL 16

NATIONAL RANK: NO. 10

Southeastern Louisiana	W	6-1
Centenary	W	6-0
Southern	W	6-0
New Orleans	W	6-1
Southern Miss	W	7-0
Texas Southern	W	7-0
Louisiana-Lafayette	W	7-0
Duke	L	2-4
Boise State	W	4-2
Ohio State	W	4-1
Texas A&M	W	4-1
Florida	L	2-4
South Carolina	L	3-4
Georgia	L	2-5
Tennessee	L	3-4
South Florida	W	6-1
Michigan	W	5-2
Kentucky	L	3-4
Vanderbilt	W	4-0
Ole Miss	L	3-4
Mississippi State	W	4-3
Auburn	W	6-1

Alabama	W	5-2
Tulane	W	6-1
Arkansas	W	4-3
SEC TOURNAMENT		
Auburn	W	4-2
Ole Miss	L	3-4
NCAA REGIONAL		
Binghamton	W	4-0
Tulane	W	4-1
NCAA FINAL 16		
Georgia	L	0-4

2006 (15-10)

COACH: JEFF BROWN
NCAA FIRST ROUND
NATIONAL RANK: NO. 25

Southern Miss	W	7-0
Centenary	W	7-0
Nicholls St.	W	6-1
Southern	W	6-1
Michigan	W	5-2
Ohio State	L	6-1
UCLA	L	4-2
Colorado	W	4-1
Arkansas	W	4-1
Clemson	L	4-3
TCU	L	4-3
Tennessee	W	4-3
Georgia	L	6-1
Kentucky	L	4-3
Vanderbilt	W	4-3
Texas A&M	-	PP
South Carolina	W	7-0
Florida	W	4-3
Ole Miss	W	4-3
Mississippi State	W	7-0
UL-Lafayette	W	5-2
Alabama	W	4-3
Auburn	L	4-3
Arkansas	L	4-3

SEC TOURNAMENT

Mississippi State	L	2-4
-------------------	---	-----

NCAA REGIONAL

Minnesota	L	2-4
-----------	---	-----

2007 (18-7)

COACH: JEFF BROWN
NCAA ROUND OF 16
NATIONAL RANK: NO. 15

Southern	W	6-0
Centenary	W	6-0
Southern Miss	W	7-0
UL-Lafayette	W	7-0
Rice	W	4-3
Ohio St	L	2-4
TCU	W	6-1
Tennessee	W	4-3
Georgia	L	1-6
Kentucky	W	6-1
Vanderbilt	W	6-1
Texas A&M	W	4-3
Illinois	W	4-3
South Carolina	W	4-0
Florida	L	3-4
Ole Miss	L	3-4
Mississippi St.	W	6-1
Alabama	W	5-2
Auburn	L	3-4
Arkansas	W	5-2

SEC TOURNAMENT

Tennessee	W	4-2
Georgia	L	1-4

NCAA REGIONAL

Alcorn St.	W	4-0
Vanderbilt	W	4-0

NCAA ROUND OF 16

Ohio State	L	4-0
------------	---	-----

2008 (15-9)

COACH: JEFF BROWN
NCAA SECOND ROUND
NATIONAL RANK: NO. 19

Louisiana-Lafayette	W	7-0
Illinois	L	1-6
Southern Miss	W	7-0
Southern	W	7-0
Clemson	Cancelled	
Texas A&M	W	5-2
Alabama	L	2-5
Auburn	L	2-5
Kentucky	W	4-0
Vanderbilt	W	6-1
Centenary	W	7-0
South Florida	W	5-2
Ohio State	L	2-4
Rice	W	4-2
Georgia	L	2-4
Tennessee	L	1-6
South Carolina	W	6-1
Florida	W	4-3
Mississippi State	W	5-2
Ole Miss	L	2-5
Arkansas	W	5-2

SEC TOURNAMENT

Mississippi State	W	4-0
Tennessee	L	2-4

NCAA REGIONAL

Drake	W	4-1
Illinois	L	2-4

2009 (11-12)

COACH: JEFF BROWN
NCAA SECOND ROUND
NATIONAL RANK: NO. 28

Texas Tech	W	4-3
Tulsa	L	2-4
Rice	W	4-3
Ohio State	L	0-7
Louisiana Lafayette	W	4-0
New Orleans	W	4-0
Auburn	L	3-4
Alabama	L	2-5
Vanderbilt	W	4-3
Kentucky	L	0-7
South Florida	W	4-3
Texas A&M	L	3-4
Georgia	L	2-5
Tennessee	L	3-4
Florida	L	2-5
South Carolina	W	5-1
Ole Miss	L	2-5
Mississippi State	W	4-2
Arkansas	W	4-0

SEC TOURNAMENT

South Carolina	W	4-2
Ole Miss	L	2-4

NCAA REGIONAL

Rice	W	4-0
Ole Miss	L	2-4

2010 (8-15)

COACH: JEFF BROWN
SEC TOURNAMENT SECOND ROUND
NATIONAL RANK: 46

Louisville	L	2-4
Florida State	L	2-4
Rice	L	1-6
Virginia	L	0-7
UL-Lafayette	W	6-1
New Orleans	W	4-0
Texas A&M	L	2-5
South Carolina	W	5-2
Florida	L	0-7
Mississippi State	W	4-3
Ole Miss	L	3-4

Wake Forest	W	4-2
Tennessee	L	0-7
Ohio State	L	2-4
Georgia	L	2-5
Alabama	L	3-4
Auburn	L	2-5
Kentucky	L	2-5
Vanderbilt	L	3-4
South Florida	W	4-3
Arkansas	W	5-2
SEC TOURNAMENT		
Alabama	W	4-2
Tennessee	L	0-4

2011 (12-14)

COACH: JEFF BROWN
SEC TOURNAMENT SECOND ROUND
NATIONAL RANK: 32

#15 Texas Tech	L	0-4
Auburn	L	1-4
Rice	W	5-2
UL-Lafayette	W	6-1
New Orleans	W	7-0
#4 Ohio State	L	0-7
Wake Forest	L	1-4
#14 Texas A&M	L	1-6
#11 Florida	L	1-6
South Carolina	W	5-2
#1 Virginia	L	2-5
#22 Ole Miss	W	4-2
Mississippi St.	L	2-5
#16 Michigan	W	5-2
#8 Georgia	L	0-7
Nebraska	W	4-3
#2 Tennessee	L	3-4
#18 Auburn	W	5-2
Alabama	W	4-2
Vanderbilt	L	0-7
#12 Kentucky	L	1-6
Arkansas	W	6-1

SEC TOURNAMENT

Alabama	W	4-0
#5 Georgia	L	1-4

2012 (15-11)

COACH: JEFF BROWN
NCAA SECOND ROUND
NATIONAL RANK: 25

Rice	W	5-2
#13 California	L	0-4
#25 Minnesota	W	4-0
Clemson	W	5-2
Michigan	L	2-5
Tulane	W	7-0
#12 Texas A&M	W	4-3
New Orleans	W	6-1
#9 Kentucky	L	1-5
Vanderbilt	W	6-1
Alabama	W	5-0
Auburn	L	2-5
USF	W	4-3
Illinois State	W	5-1
St. John's	W	4-3
#2 Ohio State	L	1-6
#24 Tennessee	L	3-4
#4 Georgia	L	3-4
#10 Mississippi State	L	1-6
#14 Ole Miss	L	2-5
South Carolina	W	4-3
#9 Florida	W	4-2
Arkansas	W	4-0

SEC TOURNAMENT

Vanderbilt	L	3-4
------------	---	-----

NCAA FIRST AND SECOND ROUNDS

Northwestern	W	4-0
#8 Duke	L	1-4

2013 (16-12)

COACH: JEFF BROWN
NCAA SECOND ROUND
NATIONAL RANK: 22

Southern Miss	W	6-1
#11 Mississippi State	L	0-7
#23 Indiana	W	4-3
USF	W	5-2
Rice	W	4-3
Texas Tech	PPD	
#4 Ohio State	L	0-7
Wright State	W	6-1
#25 Vanderbilt	L	3-4
#6 Kentucky	L	0-4
Auburn	L	2-5
Alabama	L	1-6
#11 Texas A&M	W	4-3
Michigan	L	2-5
#7 Ole Miss	W	4-3
Nicholls	W	7-0
#20 Florida	W	4-2
#25 South Carolina	L	1-4
Tulane	W	7-0
New Orleans	W	6-0
#4 Georgia	L	0-4
#6 Tennessee	W	4-3
Alcorn State	W	7-0
#11 Mississippi State	L	1-4
Arkansas	W	4-1
Jackson State	W	4-0
SEC TOURNAMENT		
#17 South Carolina	L	3-4
NCAA FIRST AND SECOND ROUNDS		
Stanford	W	4-2
#12 Pepperdine	L	0-4

2014 (14-14)

COACH: JEFF BROWN
SEC TOURNAMENT QUARTERFINAL ROUND
NATIONAL RANK: 46

Rice	W	4-3
#19 Wake Forest	L	1-4
#15 Vanderbilt	L	1-4
North Florida	W	4-0
Liberty	W	7-0
Southern Miss	W	6-1
Jackson State	W	7-0
Michigan	L	2-5
#25 Kentucky	L	2-5
New Orleans	W	7-0
#14 Vanderbilt	L	1-4
Alabama	L	3-4
Alcorn State	W	6-0
Auburn	L	1-4
George Washington	W	4-3
#9 Texas A&M	L	0-4
Nicholls	W	7-0
#22 Mississippi State	L	2-4
Ole Miss	W	4-1
South Carolina	W	4-3
#15 Florida	L	0-4
#20 Tennessee	L	1-4
#8 Georgia	L	0-4
Tulane	W	4-0
Arkansas	L	1-4
SEC TOURNAMENT		
Arkansas	W	4-1
#17 Mississippi State	W	4-2
#15 Florida	L	0-4

Year-By-Year Results

2015 (18-9)

COACH: JEFF BROWN

NCAA SECOND ROUND

NATIONAL RANK: 30

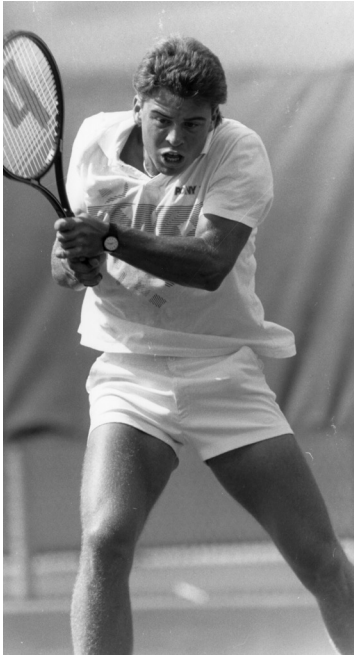
Lamar	W	6-1
Nicholls	W	7-0
San Diego	W	4-2
TCU	L	1-4
Purdue	W	7-0
Wisconsin	Canceled	
Jackson State	W	7-0
Jackson State	W	7-0
Alcorn State	W	7-0
Rice	W	6-1
Tulane	W	4-3
Tennessee	W	4-0
Kentucky	W	4-1
South Carolina	L	1-4
#4 Georgia	L	2-4
#11 Vanderbilt	W	4-1
New Orleans	W	7-0
Alabama	W	4-3
#13 Ole Miss	L	3-4
Arkansas	W	6-1
#16 Florida	L	2-4
Auburn	W	4-3
#7 Texas A&M	L	0-4
#20 Mississippi State	L	2-4

SEC TOURNAMENT

South Carolina	W	4-1
#6 Texas A&M	L	0-4

NCAA FIRST AND SECOND ROUNDS

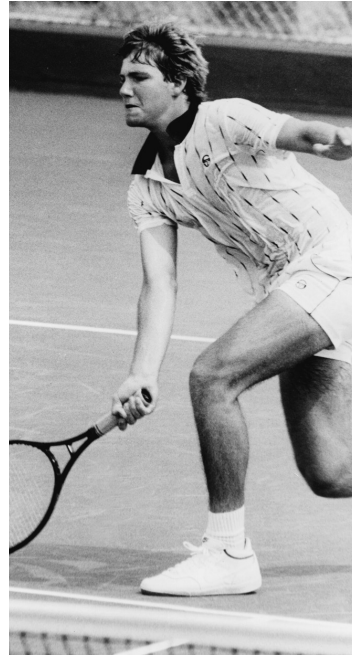
UTSA	W	4-0
#2 Baylor	L	0-4



Donni Leaycraft



Tom Hand



Jeff Brown



Ken Skupski

Individual

Most Singles Matches Won:

Career: Donni Leaycraft-135 (1987-90)

Season (overall): Donni Leaycraft-42 (1989)

Season (dual): Donni Leaycraft-25 (1988)

Most Doubles Matches Won:

Career: Chad Dudley-Ryan Ideta-71 (1993-96)

Season: Ken Skupski-Mark Growcott-34 (2005)

Best Winning Percentage (season):

Mike Hammett .903 (28-3, 1988)

Team

Most Wins: 27 (1988)

Most Consecutive Wins: 18 (1977, 1988, 1998)

Highest Winning Percentage: .931 (27-2, 1988)

Most Shutouts: 10 (1940)

Most Consecutive Shutouts: 7 (1995)

Most Singles Wins (Season)

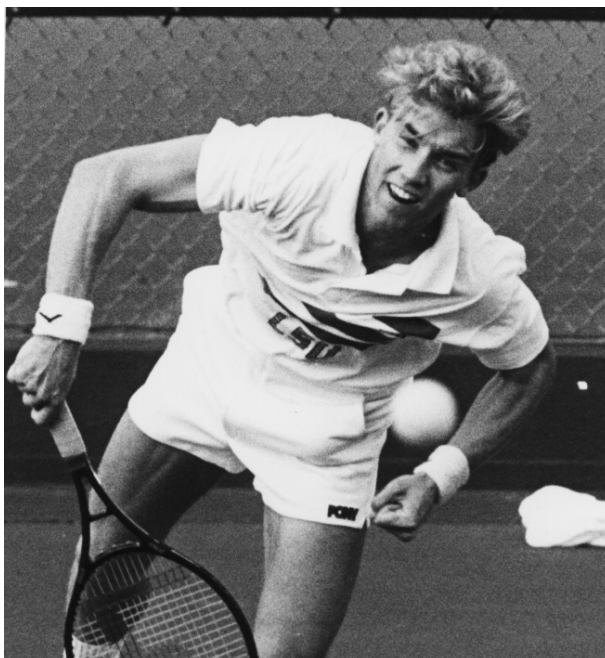
	PLAYER	RECORD	YEAR
1.	Donni Leaycraft	42-10	1989
2.	Tamer El Sawy	39-5	1993
3.	Johan Kjellsten	38-11	1989
4.	Billy Uribe	37-19	1986
5.	Mark Shoptaugh	34-4	1980
	Johan Milbrink	34-17	1990
	Tom Hand	34-9	2000
8.	Juha Pesola	31-5	1992
	Donni Leaycraft	31-6	1988
	Tom Hand	31-9	1999

All-Time Singles Wins Leaders

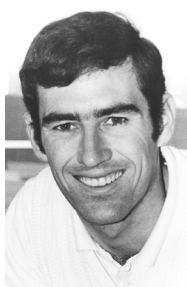
	PLAYER	RECORD	YEARS
1.	Donni Leaycraft	135-38	1987-90
2.	Billy Uribe	116-45	1985-88
3.	Tom Hand	107-43	1997-2000
4.	Ken Skupski	104-54	2003-07
5.	Jeff Brown	100-49	1985-88
6.	Mario Pacheco	99-52	1988-92
7.	Teddy Viator	96-35	1981-84
	Michael Wesbrooks	96-42	1989-93
9.	Mark Shoptaugh	94-20	1977-80
10.	Zak Blanchard	91-38	1995-98
11.	Carlos Homedes	90-45	1984-87
	Drew Meyers	90-34	1977-80
13.	Ryan Ideta	85-32	1993-96
14.	Dan Kiernan	84-47	1998-2002
	Gus Fernandez	84-50	1994-97
	Jason Hazely	84-78	2001-04
	Danny Bryan	84-44	2003-07
18.	Michal Chmela	83-33	1997-2000
19.	Jason Noonan	81-48	1983-86
20.	Jose' Leon	80-28	1993-96



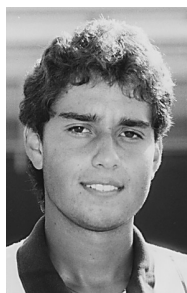
Billy Uribe



Johan Kjellsten



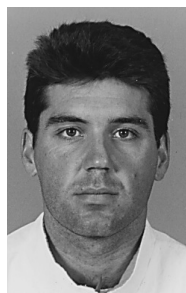
Steve Faulk
Singles - 1970



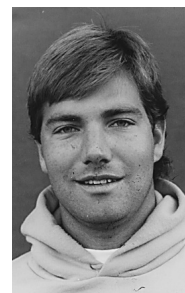
Fernando Perez
Singles - 1984, 1985



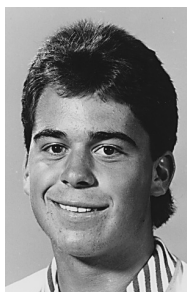
Felix Barrientos
Singles - 1987, 1988
Doubles - 1988



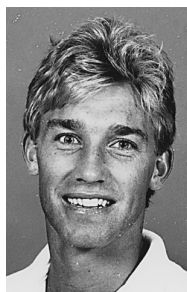
Billy Uribe
Singles - 1987, 1988



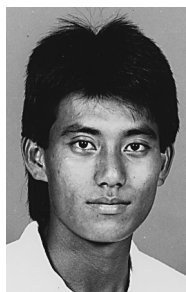
Jeff Brown
Doubles - 1988



Donni Leaycraft
Singles - 1988, 1989



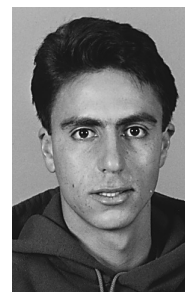
Johan Kjellsten
Singles - 1989



Roland So
Singles - 1989



Tom Furukrantz
Singles, Doubles - 1990



Mario Pacheco
Singles - 1990, 1992
Doubles - 1992



Tamer El Sawy
Singles - 1992, 1993
Doubles - 1992



Juha Pesola
Singles, Doubles - 1993



Michael Wesbrooks
Doubles - 1993



Pedro Braga
Singles - 1995



Michal Chmela
Singles - 1998, 1999,
Doubles - 1998, 2000



Daniel Kiernan



Michael Venus



Tom Hand
Doubles - 1998



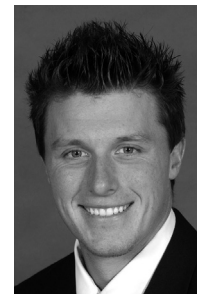
Dan Kiernan
Doubles - 2000



Ajay Ramaswami
Singles - 2001



Mark Growcott
Doubles - 2005



Ken Skupski
Doubles - 2005
Singles - 2006, 2007



Danny Bryan
Doubles - 2007



Colt Gaston
Doubles - 2007



Michael Venus
Singles - 2009
Doubles - 2009



Neal Skupski
Doubles - 2009, 2011



Sebastian Carlsson
Doubles - 2011



Boris Arias
Doubles - 2015



Jordan Daigle
Doubles - 2015

Michael Venus

2008 D'Novo/All-American
Champion
2008 All-American Singles

College Grand Slams

Michael Venus defeated the nation's No. 1 player Oleksandr Nedovyesov of Oklahoma State University to win the 2008 D'Novo All-American Championship, becoming the first in school history to win the title.

"LSU has had many great players in the history of the program. For Michael to be the first to win speaks to both the prestige of the tournament and to his level of play," LSU head coach Jeff Brown said. "It's also validation of the program in all that we are doing in practice, weights and conditioning is getting results."

As Venus, No. 20 in preseason ITA rankings, and Nedovyesov squared off, the 6-3 LSU senior was battling severe knee pain. Venus was able to capture the first set by a 7-6 (5) mark, but faltered in the following set, allowing Nedovyesov to post a 6-2 mark. "Michael lost concentration in the second set and the match could have easily slid downhill," LSU assistant coach Danny Bryan said. "His knee was hurting him so badly, I thought he was going to have to stop the match, but he was able to fight through it and that's what made the third set so amazing."

After a close first set and falling in the second, Venus was able to overcome both the physical and mental hurdle his knee caused and capture the match in a stellar third set performance. Venus posted a 6-4 mark to win the set and the championship match. "Winning felt good. I was hurting and as I got into the third set, Danny motivated me and reminded me of how hard I had worked. It gave me the motivation I needed to push through when things

got tough," Venus said.

Venus' run at the 2008 ITA All-American advanced him over six ranked opponents in the ITA's preseason rankings. Venus began his campaign on a solid note as he knocked off No. 98 Roy Kalmanovich of Illinois, 6-2, 6-2, before moving into the second round to defeat No. 23 Jaime Hunt of Georgia, 6-4, 7-6(8). The highlight of Venus' performance prior to the finals would be his victory over No. 4 Alex Clayton of Stanford. He advanced in straight sets over Clayton, 6-4, 6-1, moving into the tournament quarterfinals.

In the quarterfinals, Venus defeated Arkansas' Blake Strode, No. 41, in a heated match, 1-6, 6-3, 6-4, to catapult him into the semis where the senior would overcome No. 31 Enrique Olivares of East Tennessee State, 7-6 (3), 6-1, creating history by becoming the first Tiger to ever advance into the finals at the ITA All-American.

Venus' road to the 2008 All-American singles title:

First Round: def. Roy Kalmanovich (Illinois), 6-2, 6-2
Second Round: def. Jamie Hunt (Georgia), 6-4, 7-6 (10-8)
Third Round: def. Alex Clayton (Stanford), 6-4, 6-1
Quarterfinal: def. Blake Strode (Arkansas), 1-6, 6-3, 6-4
Semifinal: def. Enrique Olivares (ETSU), 7-6 (7-3), 6-1
Final: def. Oleksandr Nedovyesov (Oklahoma State), 7-6 (7-5), 2-6, 6-4

Donni Leaycraft

1989 NCAA Singles Champion

Donni Leaycraft capped off his record-setting junior season by becoming the first LSU player to win the NCAA singles title. Leaycraft entered the NCAA singles tournament as the 13th seed and proceeded to breeze through the first four rounds, winning all four matches in straight sets. In the semifinal, Leaycraft upset hometown favorite Pablo Montana of Georgia in three sets and then beat Steven Jung of Nebraska 6-1, 4-6, 6-3 to claim the title. Leaycraft finished the year with a 42-10 record and ranked No. 3 in the nation.



Leaycraft's road to the 1989 NCAA singles titles:

First Round: def. Lee Galway (Boise State), 6-3, 6-1
Second Round: def. Mark Mance (Duke), 6-1, 6-3
Third Round: def. Conny Falk (Miami), 6-1, 6-4
Quarterfinal: def. Al Parker (Georgia), 7-5, 6-1
Semifinal: def. Pablo Montana (Georgia), 7-5, 4-6, 6-2
Final: def. Steven Jung (Nebraska), 6-1, 4-6, 6-3

Johan Kjellsten

1988 Clay Court Singles Champion

Johan Kjellsten did not waste any time making an impact after transferring from McNeese State prior to his senior season. At the Clay Courts, Kjellsten, who was the tournament's eighth seed, knocked off top-ranked Malivai Washington of Michigan, 6-3, 6-3 in the quarterfinal and then cruised past fourth-ranked Greg Failla of Southern Cal in the semifinal. In the final, Kjellsten knocked off 12th-ranked Stephen Enochs of Georgia 2-6, 6-2, 6-1 to give LSU the school's first grand slam event winner. Kjellsten went on to post a 38-11 overall singles record and finished the year ranked No. 7 in the country.



Kjellsten's road to the 1988 clay court singles title:

First Round: def. Ellis Ferriera (Alabama), 7-6, 7-6
Second Round: def. Brice Karsh (Tennessee), 6-3, 3-6, 6-3
Quarterfinal: def. Malivai Washington (Michigan), 6-3, 6-3
Semifinal: def. Greg Failla (Southern Cal), 6-2, 6-0
Final: def. Stephen Enochs (Georgia), 2-6, 6-2, 6-1

Tamer El Sawy

1993 NCAA Singles Semifinalist

Arguably the best player to ever play for LSU, Tamer El Sawy capped off his career with the Tigers with one of the best individual seasons in school history. El Sawy posted a 39-5 overall record and reached the semifinals of the NCAA singles tournament in 1993. He breezed through the first three rounds of draw before beating Roland Thornqvist of North Carolina in three sets in the quarterfinal. El Sawy, the No. 3 seed, then dropped a three-set match No. 1-ranked Chris Woodruff of Tennessee. The El Sawy-Woodruff semifinal match was said to be the best match of the tournament and it was only fitting that it would be the last match El Sawy would play at LSU.

El Sawy at the 1993 NCAA Singles

Tournament

First Round: def. Chris Pressley (Duke), 4-6, 6-0, 6-2

Second Round: def. Fredrik Axsater (San Diego), 6-2, 6-0

Third Round: def. Wayne Black (Southern Cal), 6-1, 7-6

Quarterfinal: def. Roland Thornqvist (N. Carolina), 6-7, 6-4, 6-4

Semifinal: lost to Chris Woodruff (Tenn.), 6-2, 5-7, 6-3

Michael Wesbrooks & Juha

Pesola

1993 NCAA Doubles Semifinalists

Michael Wesbrooks and Juha Pesola put together one of the best doubles seasons in LSU history as the Tiger tandem posted a 23-2 overall record and advanced to the semifinals at the NCAA doubles tournament in 1993. Wesbrooks and Pesola, both seniors, were a perfect 12-0 in SEC action and had an incredible 20-1 mark in dual matches. At the NCAA doubles tournament, the duo posted three wins, two over seeded opponents, before losing to eventual champion Mark Merklein and David Blair of Florida in the semifinal. Wesbrooks and Pesola finished the year ranked No. 11 in the nation.

Wesbrooks & Pesola at the NCAA Doubles Tournament

First Round: def. Martinez-Weaver (Texas A&M), 6-2, 5-7, 6-4

Second Round: def. Lampert-Wild (Clemson), 6-3, 7-6

Quarterfinal: def. Haggard-Woodruff (Tenn.), 5-7, 6-3, 6-3

Semifinal: lost to Merklein-Blair (Florida), 6-4, 6-4

Michal Chmela

1999 ITA All-American Semifinalist

Michal Chmela, in his lone fall tournament of the season, became the first Tiger to advance to a Grand Slam semifinal in six years at the ITA All-American hosted by the University of Texas. Chmela, seeded-fourth knocked off three ranked opponents in straight sets to reach the round of four. There he fell to sixth-seeded Brian Vahaly of Virginia in a three-set thriller.

Chmela at the 1999 ITA All-American

First Round: def. Andy Leber (UT-Arlington), 6-1, 3-0, ret.

Second Round: def. Johan Hesoun (Kentucky), 6-4, 6-3

Third Round: def. James Shortall (Ole Miss), 7-6 (0), 6-2

Quarterfinal: def. Johann Jooste (Baylor), 7-6, 6-1

Semifinal: lost to Brian Vahaly (Virginia), 1-6, 6-4, 7-6 (4)

Ken Skupski

2004 ITA All-American Semifinalist

Ken Skupski, knocked off three ranked opponents en route to the semifinals of the first tournament of his sophomore year. One of those wins was the biggest of his career; a quarterfinal upset of Old Dominion's ninth-ranked Izac van der Merwe. He was only slowed by second-ranked Sam Warburg of Stanford in the semifinals.

Skupski at the 2004 ITA All-American

First Round: def. Greg Shearer (Fresno State), 6-2, 6-3

Second Round: def. Chris Brandi (Florida), 6-4, 5-7, 6-3

Third Round: def. Shannon Buck (Air Force), 6-4, 7-6 (8-6)

Quarterfinal: def. Izac van der Merwe (Old Dominion), 6-4, 7-6

Semifinal: lost to Sam Warburg (Stanford), 6-7, 1-6

Mark Growcott & Ken Skupski

2005 NCAA Doubles Finalist

Ken Skupski and Mark Growcott posted the best doubles season in LSU history, battling their way through some of the nation's top doubles teams en route to a runner-up finish at the NCAA Doubles Championships. The Tiger tandem defeated No. 2 seeded K. C. Corkery and Sam Warburg of Stanford in straight sets in the semifinal round to become the first LSU pair to reach the title match. Skupski and Growcott ended the season with 34-10 record, including a 9-2 mark in the SEC, and set a school record for most doubles victories in a season.



Skupski & Growcott at the NCAA Doubles Tournament

First Round: def. Joelson-Matijevic (Texas A&M) 6-1, 3-6, 7-5

Second Round: def. Schoeck-Shields (Boise State) 7-6 (2), 3-6, 6-2

Quarterfinal: def. Charm-Shamasdin (Brown) 6-3, 6-7 (2), 6-4

Semifinal: def. Corkery-Warburg (Stanford) 7-6 (1), 6-4

Championship: lost to Ruiz-Isner (Georgia) 7-6 (4), 7-5

A

Sam Abramson (1929-30)
 Marcelo Achondo (1991-92)
 Mauricio Agüero (1980-81)
 Roger Anderson (2010-13)
 Nabil Al-Alawi (1962-64)
 Gary Albertine (1973-76)
 Rick Allen (1967-68)
 Mario Alvarez (2000)
Boris Arias (2013-15)
 Walt Ayres (1940)

B

Reese Baker (1976)
 Spud Baldwin (1951)
 Gary Barnett (1979)
 Felix Barrientos (1986-88)
 Ernest Barton (1948)
 Hugh Baxley (1955)
 Max Begue (1969-72)
 Dale Bennett (1952)
 Joe Bettison (1960, 1963)
 Larry Black (1967-69)
 Zak Blanchard (1995-98)
 Olivier Borsos (2010-13)
 Tad Bourg (1969-70)
 Mark Bowtell (2009-11, 2012-13)
 Pedro Braga (1994-98)
 David Broer (1982)
 Jeff Brown (1985-88)
 Danny Bryan (2004-07)
 Jack Burleigh (1982-83)
 Jack Bushman (1937-39)
 John Michael Busch (2014-15)
Justin Butsch (2014-15)

C

Martel Campbell (2004-06)
 Gary Cannon (1976-77)
 John Cannon (1934-35)
 Sebastian Carlsson (2008-11)
 Kenny Carter (1956-58)
 Steve Carter (1963-65)
 Alan Chandronnait (1976-78)
 Michal Chmela (1997-2000)
 Frank Church (1975)
 Grant Clark (1941)
 Stevenson Clarke (1980-83)
 James Cluskey (2006-09)
 Walter Cockerham (1952-54)
 Eugene Cole (1937)
 Jim Collins (1936-38)
 Dudley Couvillion (1930)
 Beverly Covington (1948-50)
 Ernest Cox (1960-63)
 Mitch Creekmore (1971-75)
 Dickie Crowell (1959-60)

D

Jordan Daigle (2015)
 Devakul Debriddi (1936)
 Kevin Dessauer (2005-08)
 Eric DeRoche (2006-07)
 Ryan Detlefs (1994)
 Wayne Diel (1968-71)
 Tommy Ducrest (1969-72)
 Chad Dudley (1993-96)
 Howard Dumont (1959-60)

E

Bob Eckstein (1948)
 Bobby Ecuyer (1967)
 Ed Eerett (1925)
 Tamer El Sawy (1991-93)
 Otto Engleman (1954)
 Pedro Escudero (1997-98)

F

Al Fagot (1967-68)
 Steve Faulk (1968-70)
 Ronnie Fenasci (1953-55, 57)
 Tracy Fenelon (1981)
 Gus Fernandes (1994-97)
 Bryan Fisher (2001-04)
 Kirk Fisher (1996-98)
 Johnny Foster (1972-75)
Simon Freund (2015)
 Tom Furukrantz (1989-90)

G

Colt Gaston (2004-06, 08)
 Glen Gatenby (1974, 76)
 Julien Gauthier (2008-10)
 Jordan Girdley (2011)
 Gene Glanker (1947)
 Leo Gold (1926-28)
 Edgar Gomez (1957-59)
 Rod Gonzalez (1990)
 Gary Gorman (1979)
 Hal Gorman (1976-79)
 Frankie Green (2003)
 Jack Greene (1960-62)
 Mark Growcott (2005-06)
 Alex Guevara (1993)
 Salvador Gustella (1938-39)

H

John Hackett (1928-30)
 Bobby Hagerman (1972-75)
 Johnny Hamilton (1956)
 Larry Hammett (1957-59)
 Michael Hammett (1986-88)
 Tom Hand (1997-2000)
 Dan Hardesty (1946-47)
 Bob Harvey (1947-48)
 Jason Hazley (2002-05)
 Pat Hebert (1930)
 Frank Hennessy (1977)
 Joe Hill (2013)
 Dick Holt (1956)
 Janne Holtari (1991-92, 94)
 William Holtman (1951-52)
 Carlos Homedes (1985-87)
 Joe Hubbard (1963-65)
 Robert Hubbard (1966-68)
 Tommy Hudson (1966-68)
 William Hudson (1968)
 Dave Humphreys (1932-35)
 Edwin Hunter (1932)
 Jonathan Hurd (1998-2001)**I**
 Ryan Ideta (1993-96)
 H.L. Isaminger (1932-33)

J

Bernard Jacoby (1940-42)
 Francie Johnston (1930)
 Chad Jones (1990)

K

Frank Kaplan (1938)
 Joe Kelly (1970)
 Robert Kennan (1925)
 Harrison Kennedy (2013-15)
 Ed Ketchum (1935-36)
 Mike Keyton (1965)
 Daniel Kiernan (1999-2002)
 L.C. Kirkland (1939-41)
 Johan Kjellsten (1989)
 Kenneth Koach (1948-49)
 Tom Knights (2011-12)
Andrew Korinek (2014-15)

L

Jack Lanier (1942)
 W.L. Lanier (1926)
 Bazile Lanneau (1948-50)
 Randy Lavercombe (1972-73, 75)
 Donni Leaycraft (1987-90)
 Harry Lee (1956)
 William LeFevre (2005-06)
 Jose Leon (1993-96)
 Charles Lewis (1929)
 David Longmire (1964-66)
 Cody Loup (2009-10)
 Steve Lovett (1980)

M

Curt Maddox (2009)
 Cedric Martin (1971)
 Anthony Mateljan (1999-2001)
 Bill McDowell (1950)
 Billy McGehee (1973-76)
 M.J. McLaney (1937)
 Charles McVea (1929)
 Andrew Meyers (2009)
 Drew Meyers (1977-80)
 John Michaelis (2011-12)
 Johan Milbrink (1990-91)
 Willard Mixon (1938-39)
 David Methvin (1971)
 Larry Mills (1948-50)
 Ellis Murov (1969)

N

Tommy Neck (1959-61)
 Brandon Nicholson (2001-03)
 Les Nicholson (1960-61)
 Tommy Nido (1979-82)
 Jason Noonan (1983-86)

O

Mike Oransky (1978-80)
 Hugh Obourn (1965-66)
 Jere Overdyke (1970-71)
 Billy Owens (1941-42, 46-47)

P

Mario Pacheco (1989-92)
 Charles Padgett (1946)
 Juha Pesola (1992-93)
 Charlie Pitts (1952-54)
 Eric Perez (2014-15)
 Fernando Perez (1983-86)
 Mauricio Posso (1980)
 John Gray Pou (2000-01)
 Bill Power (1967)
 Benton Presslar (1953-55)

R

Ajay Ramaswami (2000-01)
 Charles Rees (1961)
 Roger Richardson (1949-51)
 Peter Richman (2002-04)
 Pat Rickey (1960-62)
 Kenneth Roach (1948-49)
 David Roberts (2009-12)
 Jim Roberts (1958)
 Ed Robertson (1932-33, 35)
 Jess Robertson (1963)
 Johnny Robinson (1958-59)
 Tommy Robinson (1957-59)
 W.T. (Dub) Robinson (1932, 34-36)
 David Romer (1953-54)
 David Rosenbaum (1953-54)
 Cory Ross (2002-04)
 Robert Rouse (1974-77)
 Ed Rubin (1997-2000)
 Sebastian Rutka (2001-04)

S

Sanjin Sadovich (2001)
 Jonas Samuelsson (1996-99)
 Tom Sanders (1935-37)
 DeWitt Sauls (1926-28)
 Pat Scanlon (1955-56)
 Geza Schay (1950)
 Darrell Schultz (1952-53)
 Brett Schwartz (1984)
 Ged Schwing (1986-89)
 Samer Shamieh (1999-2000)
 Mark Shoptaugh (1977-80)
 Aubrey Sievers (1933-36)
 Chris Simpson (2012-15)
 J.T. Sims (1973-76)
 Fred Simoneau (1965)
 Ken Skupski (2004-07)
 Neal Skupski (2009-12)
 Thad Slanton (1991-92)
 Jesse Smatt (1999-2002)
 Roland So (1987-89)
 Jonathan Sorbo (1981-82)
 John Sruk (1999-2001)
 Joe Stevens (1946-47)
 Stefan Szacinski (2010-13)

T

Irvin Thompson (1949)
 Mark Tindle (1971-72)
 Jonathan Tragardh (2004-05, 08-09)
 Clinton Trepdahl (1967)
 Robert Tudor (1954-57)
 James Turbervill (2010, 2012)
Tam Trinh (2013-15)

U

Billy Umstaedter (1940-42)
 Billy Uribe (1985-88)
 Kenny Uselton (1966)

V

Steve Vasquez (1989-92)
 John Venable (1951)
 Michael Venus (2008-09)
 Teddy Viator (1981-84)
 Todd Viator (1987-89)
 Eduardo Villagomez (1995-98)

W

Milton Walker (1951, 55)
 Jim Walthall (1960)
 Cecil Webb (1951, 53)
 Michael Wesbrooks (1990-93)
 Paul White (2003-06)
 Earl Williamson (1946-47)
 Carl Winslow (1981-82)
 Marcello Wolff (1970)
 Steve Wood (1983-85)

Y

Paul Young (1952-54)

Z

Jan Zelezny (2007-08)

Current players in **BOLD**