



LSU at Tennessee

02/14/26 Food City Center, Knoxville, Tennessee
2025-2026 Men's Basketball

Game Time: 6:01 PM
Game Duration: 1:56
Attendance: 21,678

Officials: Byron Jarrett, Lucas Santos, Bharat Ramnanan

LSU - 63 Record: 14-11 (2-10)

NO.	Name	F	Min	FG	3P	FT	Rebounds			Fouls		TP	AS	TO	ST	Blocks		+/-
				M-A	M-A	M-A	OR	DR	TOT	PF	FD					BS	BA	
8	Pablo Tamba	F	32:18	4-8	2-3	3-8	1	1	2	4	5	13	1	0	0	0	0	-3
10	Marquel Sutton	F	32:06	6-15	1-3	2-2	2	7	9	4	3	15	0	0	1	0	2	-13
1	Michael Nwoko	C	21:22	3-7	0-0	4-5	3	2	5	4	3	10	0	1	0	1	0	-11
2	Jalen Reece	G	40:00	4-8	3-5	4-4	0	0	0	0	2	15	4	1	0	0	0	-10
4	Rashad King	G	20:00	1-6	0-4	0-0	0	0	0	3	1	2	3	0	1	0	0	-9
7	PJ Carter		15:17	0-3	0-3	0-0	0	0	0	0	0	0	1	1	0	0	0	-1
6	Robert Miller III		16:47	1-2	0-0	0-0	2	2	4	4	0	2	0	0	2	1	0	6
0	Mazi Mosley		22:10	2-6	2-5	0-0	0	2	2	0	2	6	2	0	0	0	0	-9
Team							0	2	2	0		0						
Totals				21-55	8-23	13-19	8	16	24	19	16	63	11	3	4	2	2	-10

Shooting By Period		
1 st FG%	9-26	34.6%
3PT%	4-10	40.0%
FT%	7-11	63.6%
2 nd FG%	12-29	41.4%
3PT%	4-13	30.8%
FT%	6-8	75%
GM FG%	21-55	38.2%
3PT%	8-23	34.8%
FT%	13-19	68.4%

Dead Ball Rebounds: 3, 0

Major Fouls: NONE

Tennessee - 73 Record: 18-7 (8-4)

NO.	Name	F	Min	FG	3P	FT	Rebounds			Fouls		TP	AS	TO	ST	Blocks		+/-
				M-A	M-A	M-A	OR	DR	TOT	PF	FD					BS	BA	
10	Nate Ament	F	35:38	6-19	0-3	10-11	2	7	9	0	8	22	1	0	0	2	2	8
13	J.P. Estrella	F	27:59	7-9	0-0	2-4	6	3	9	4	3	16	0	1	0	0	0	6
34	Felix Okpara	C	27:14	1-4	0-0	1-2	2	5	7	2	3	3	0	0	0	0	0	-1
0	Ja'Kobi Gillespie	G	35:07	4-9	4-8	0-0	0	2	2	1	1	12	6	2	1	0	0	10
3	Bishop Boswell	G	22:13	1-2	0-1	0-0	1	2	3	4	0	2	3	1	0	0	0	-2
6	DeWayne Brown II		11:19	0-1	0-0	3-4	1	1	2	1	3	3	2	0	0	0	0	4
23	Jaylen Carey		13:17	3-5	0-0	1-2	1	4	5	2	1	7	3	2	1	0	0	11
24	Troy Henderson		02:30	0-1	0-1	0-0	0	0	0	0	0	0	1	1	0	0	0	2
1	Amari Evans		06:45	0-0	0-0	0-0	0	2	2	0	0	0	1	0	0	0	0	0
35	Ethan Burg		17:59	3-4	2-3	0-0	1	1	2	2	0	8	0	1	0	0	0	12
Team							2	2	4	0		0		1				
Totals				25-54	6-16	17-23	16	29	45	16	19	73	17	9	2	2	2	10

Shooting By Period		
1 st FG%	13-26	50.0%
3PT%	3-9	33.3%
FT%	6-10	60%
2 nd FG%	12-28	42.9%
3PT%	3-7	42.9%
FT%	11-13	84.6%
GM FG%	25-54	46.3%
3PT%	6-16	37.5%
FT%	17-23	73.9%

Dead Ball Rebounds: 3, 0

Major Fouls: NONE

	LSU	TENN
Biggest lead	3 (2 nd 14:28)	12 (1 st 4:44)
Best Scoring Run	9 (2 nd 18:24)	8 (1 st 11:22)
Lead Changes	4	
Times Tied	6	
Time with Lead	03:26	34:22

Points from	LSU	TENN
Turnovers	6	2
Paint	18	34
Second Chance	4	22
Fast Breaks	6	7
Bench	8	18

	Period by Period Scoring		
	1st	2nd	TOT
LSU	29	34	63
TENN	35	38	73



Officials: Byron Jarrett, Lucas Santos, Bharat Ramnanan

Quarter 1

Quarter Starters:

TENN	0 Gillespie J	3 Boswell B	10 Ament N	13 Estrella J	34 Okpara F
LSU	1 Nwoko M	2 Reece J	4 King R	8 Tamba P	10 Sutton M

Game Time	TENN	Score	Diff	LSU
20:00	34 OKPARA F jumpball lost			1 NWOKO M jumpball won
19:45				10 SUTTON M 2pt FG in the paint, jump shot missed
19:45	34 OKPARA F defensive rebound (1)			
19:28	0 GILLESPIE J 3pt FG , jump shot made (3)	3-0	3	
19:28	3 BOSWELL B assist (1)			
19:03				10 SUTTON M 2pt FG in the paint, layup blocked
19:03	10 AMENT N block (1)			
18:55	13 ESTRELLA J defensive rebound (1)			
18:42	13 ESTRELLA J foul received (1)			4 KING R foul personal (1 - 1)
18:41	34 OKPARA F foul received (1)			1 NWOKO M foul personal (1 - 2)
18:38	10 AMENT N 2pt FG outside the paint, jump shot made (2)	5-0	5	
18:38	0 GILLESPIE J assist (1)			
18:10				8 TAMBA P 2pt FG in the paint, turnaround jump shot missed
18:06	10 AMENT N defensive rebound (1)			
18:02	10 AMENT N 2pt FG in the paint, driving layup missed			
17:59				8 TAMBA P defensive rebound (1)
17:50		5-3	2	2 REECE J 3pt FG , jump shot made (3)
17:50				4 KING R assist (1)
17:34	13 ESTRELLA J 2pt FG in the paint, layup made (2)	7-3	4	
17:34	0 GILLESPIE J assist (2)			
17:06		7-5	2	8 TAMBA P 2pt FG outside the paint, jump shot made (2)
16:47	34 OKPARA F 2pt FG in the paint, layup missed			
16:41				10 SUTTON M defensive rebound (1)
16:37				4 KING R 3pt FG , jump shot missed
16:33	0 GILLESPIE J defensive rebound (1)			
16:29	0 GILLESPIE J turnover lost ball (out of bounds) (1)			4 KING R steal (1)
16:22	13 ESTRELLA J substitution out			
16:22	34 OKPARA F substitution out			
16:22	6 BROWN II D substitution in			
16:22	23 CAREY J substitution in			
16:22				4 KING R substitution out
16:22				7 CARTER P substitution in
16:22	0 GILLESPIE J substitution out			
16:22	24 HENDERSON T substitution in			
16:08				8 TAMBA P 2pt FG from turnover outside the paint, jump shot missed
16:05	10 AMENT N defensive rebound (2)			
16:05				1 NWOKO M substitution out
16:05				6 MILLER III R substitution in
15:55	10 AMENT N 2pt FG in the paint, jump shot made (4)	9-5	4	
15:36	23 CAREY J foul shooting (1 - 1)			8 TAMBA P foul received (1)
15:36	Timeout commercial			
15:36				8 TAMBA P free throw 1 - 2 missed



LSU at Tennessee

02/14/26 Food City Center, Knoxville, Tennessee
2025-2026 Men's Basketball

Game Time: 6:01 PM
Game Duration: 1:56
Attendance: 21,678

Officials: Byron Jarrett, Lucas Santos, Bharat Ramnanan

Game Time	TENN	Score	Diff	LSU
15:36				offensive dead ball rebound (1)
15:36				8 TAMBA P free throw 2 - 2 missed
15:35	23 CAREY J defensive rebound (1)			
15:14	24 HENDERSON T 3pt FG , jump shot missed			
15:12	6 BROWN II D offensive rebound (1)			
15:12	6 BROWN II D foul received (1)			6 MILLER III R foul personal (1 - 3)
14:55	10 AMENT N 3pt FG second chance, jump shot missed			
14:52				6 MILLER III R defensive rebound (1)
14:27				10 SUTTON M 2pt FG outside the paint, jump shot missed
14:25	3 BOSWELL B defensive rebound (1)			
14:15	24 HENDERSON T turnover bad pass (1)			6 MILLER III R steal (1)
14:12	3 BOSWELL B foul shooting (1 - 2)			2 REECE J foul received (1)
14:12		9-6	3	2 REECE J free throw fast break 1 - 2 made (4)
14:12	3 BOSWELL B substitution out			
14:12	10 AMENT N substitution out			
14:12	24 HENDERSON T substitution out			
14:12	0 GILLESPIE J substitution in			
14:12	1 EVANS A substitution in			
14:12	35 BURG E substitution in			
14:12				10 SUTTON M substitution out
14:12				4 KING R substitution in
14:12		9-7	2	2 REECE J free throw fast break 2 - 2 made (5)
13:43	0 GILLESPIE J turnover lost ball (out of bounds) (2)			6 MILLER III R steal (2)
13:38				8 TAMBA P 2pt FG from turnover in the paint, driving layup missed
13:35	1 EVANS A defensive rebound (1)			
13:19	23 CAREY J foul received (1)			6 MILLER III R foul shooting (2 - 4)
13:19	23 CAREY J free throw 1 - 2 missed			
13:19	offensive dead ball rebound (1)			
13:19				6 MILLER III R substitution out
13:19				8 TAMBA P substitution out
13:19				1 NWOKO M substitution in
13:19				10 SUTTON M substitution in
13:19	23 CAREY J free throw 2 - 2 made (1)	10-7	3	
13:12	23 CAREY J steal (1)			7 CARTER P turnover bad pass (1)
13:08	35 BURG E 2pt FG fast break from turnover in the paint, driving layup made (2)	12-7	5	
13:08	23 CAREY J assist (1)			
12:54				1 NWOKO M 2pt FG in the paint, layup missed
12:51				1 NWOKO M offensive rebound (1)
12:50				1 NWOKO M 2pt FG second chance in the paint, layup missed
12:48	1 EVANS A defensive rebound (2)			
12:40	23 CAREY J 2pt FG in the paint, layup made (3)	14-7	7	
12:40	6 BROWN II D assist (1)			
12:13				7 CARTER P 3pt FG , jump shot missed
12:09	35 BURG E defensive rebound (1)			
11:54	6 BROWN II D foul received (2)			10 SUTTON M foul shooting (1 - 5)
11:54	Timeout commercial			
11:54				7 CARTER P substitution out
11:54				0 MOSLEY M substitution in



LSU at Tennessee

02/14/26 Food City Center, Knoxville, Tennessee
2025-2026 Men's Basketball

Game Time: 6:01 PM
Game Duration: 1:56
Attendance: 21,678

Officials: Byron Jarrett, Lucas Santos, Bharat Ramnanan

Game Time	TENN	Score	Diff	LSU
11:54	1 EVANS A substitution out			
11:54	23 CAREY J substitution out			
11:54	10 AMENT N substitution in			
11:54	34 OKPARA F substitution in			
11:54	6 BROWN II D free throw 1 - 2 missed			
11:54	offensive dead ball rebound (2)			
11:54	6 BROWN II D free throw 2 - 2 made (1)	15-7	8	
11:53	6 BROWN II D substitution out			
11:53	13 ESTRELLA J substitution in			
11:43				2 REECE J 2pt FG in the paint, jump shot missed
11:40				1 NWOKO M offensive rebound (2)
11:38				1 NWOKO M 2pt FG second chance in the paint, layup missed
11:35	defensive rebound (12)			
11:35	35 BURG E substitution out			
11:35	3 BOSWELL B substitution in			
11:22	10 AMENT N foul received (1)			4 KING R foul personal (2 - 6)
11:22				4 KING R substitution out
11:22				8 TAMBA P substitution in
11:22	13 ESTRELLA J 2pt FG in the paint, dunk, made (4)	17-7	10	
11:22	3 BOSWELL B assist (2)			
10:58		17-10	7	0 MOSLEY M 3pt FG , jump shot made (3)
10:43	0 GILLESPIE J 3pt FG , jump shot missed			
10:39	3 BOSWELL B offensive rebound (2)			
10:30	13 ESTRELLA J 2pt FG second chance in the paint, hook shot made (6)	19-10	9	
10:30	10 AMENT N assist (1)			
10:08				10 SUTTON M 3pt FG , jump shot missed
10:04	10 AMENT N defensive rebound (3)			
09:50	10 AMENT N foul received (2)			10 SUTTON M foul shooting (2 - 7)
09:50	10 AMENT N free throw 1 - 2 made (5)	20-10	10	
09:50	10 AMENT N free throw 2 - 2 made (6)	21-10	11	
09:37	34 OKPARA F foul shooting (1 - 3)			1 NWOKO M foul received (1)
09:37		21-11	10	1 NWOKO M free throw 1 - 2 made (1)
09:37	10 AMENT N substitution out			
09:37	1 EVANS A substitution in			
09:37		21-12	9	1 NWOKO M free throw 2 - 2 made (2)
09:14	34 OKPARA F 2pt FG in the paint, layup missed			
09:10	13 ESTRELLA J offensive rebound (2)			
09:10	13 ESTRELLA J 2pt FG second chance in the paint, tip-in layup missed			
09:09				10 SUTTON M defensive rebound (2)
08:43				0 MOSLEY M 3pt FG , jump shot missed
08:40	34 OKPARA F defensive rebound (2)			
08:25	13 ESTRELLA J 2pt FG in the paint, dunk, made (8)	23-12	11	
08:25	1 EVANS A assist (1)			
07:53		23-15	8	0 MOSLEY M 3pt FG , jump shot made (6)
07:34	0 GILLESPIE J 3pt FG , jump shot missed			
07:33				defensive rebound (7)
07:33	Timeout commercial			
07:33	1 EVANS A substitution out			



LSU at Tennessee

02/14/26 Food City Center, Knoxville, Tennessee
2025-2026 Men's Basketball

Game Time: 6:01 PM
Game Duration: 1:56
Attendance: 21,678

Officials: Byron Jarrett, Lucas Santos, Bharat Ramnanan

Game Time	TENN	Score	Diff	LSU
07:33	13 ESTRELLA J substitution out			
07:33	34 OKPARA F substitution out			
07:33	6 BROWN II D substitution in			
07:33	10 AMENT N substitution in			
07:33	23 CAREY J substitution in			
07:33				8 TAMBA P substitution out
07:33				7 CARTER P substitution in
07:24	3 BOSWELL B foul personal (2 - 4)			0 MOSLEY M foul received (1)
07:23	3 BOSWELL B substitution out			
07:23	35 BURG E substitution in			
07:11				7 CARTER P 3pt FG , jump shot missed
07:09	23 CAREY J defensive rebound (2)			
07:01	23 CAREY J turnover lost ball (out of bounds) (1)			
07:01				10 SUTTON M substitution out
07:01				8 TAMBA P substitution in
06:43				0 MOSLEY M 2pt FG from turnover outside the paint, floating jump shot missed
06:38	23 CAREY J defensive rebound (3)			
06:22	23 CAREY J 2pt FG in the paint, layup made (5)	25-15	10	
06:22	6 BROWN II D assist (2)			
06:05	35 BURG E foul personal (1 - 5)			0 MOSLEY M foul received (2)
06:01		25-17	8	2 REECE J 2pt FG in the paint, layup made (7)
06:01				0 MOSLEY M assist (1)
05:29	35 BURG E 3pt FG , jump shot made (5)	28-17	11	
05:29	23 CAREY J assist (2)			
05:09		28-19	9	1 NWOKO M 2pt FG in the paint, driving layup made (4)
04:48	10 AMENT N 2pt FG in the paint, layup missed			
04:47	offensive rebound (19)			
04:47	0 GILLESPIE J substitution out			
04:47	24 HENDERSON T substitution in			
04:44	35 BURG E 3pt FG second chance, jump shot made (8)	31-19	12	
04:44	24 HENDERSON T assist (1)			
04:27		31-21	10	1 NWOKO M 2pt FG outside the paint, jump shot made (6)
04:27				2 REECE J assist (1)
04:27	23 CAREY J foul shooting (2 - 6)			1 NWOKO M foul received (2)
04:27	6 BROWN II D substitution out			
04:27	23 CAREY J substitution out			
04:27	24 HENDERSON T substitution out			
04:27	1 EVANS A substitution in			
04:27	13 ESTRELLA J substitution in			
04:27	34 OKPARA F substitution in			
04:27		31-22	9	1 NWOKO M free throw 1 - 1 made (7)
04:27				1 NWOKO M substitution out
04:27				6 MILLER III R substitution in
04:03	13 ESTRELLA J foul received (2)			8 TAMBA P foul shooting (1 - 8)
04:03	13 ESTRELLA J free throw 1 - 2 missed			
04:03	offensive dead ball rebound (3)			
04:03	13 ESTRELLA J free throw 2 - 2 made (9)	32-22	10	
03:42		32-24	8	8 TAMBA P 2pt FG in the paint, layup made (4)



LSU at Tennessee

02/14/26 Food City Center, Knoxville, Tennessee
2025-2026 Men's Basketball

Game Time: 6:01 PM
Game Duration: 1:56
Attendance: 21,678

Officials: Byron Jarrett, Lucas Santos, Bharat Ramnanan

Game Time	TENN	Score	Diff	LSU
03:13	10 AMENT N 3pt FG , jump shot missed			
03:11	10 AMENT N offensive rebound (4)			
03:10	10 AMENT N 2pt FG second chance in the paint, driving layup made (8)	34-24	10	
02:48	35 BURG E foul shooting (2 - 7)			2 REECE J foul received (2)
02:48	Timeout commercial			
02:48				6 MILLER III R substitution out
02:48				1 NWOKO M substitution in
02:48		34-25	9	2 REECE J free throw 1 - 2 made (8)
02:48		34-26	8	2 REECE J free throw 2 - 2 made (9)
02:17	10 AMENT N 3pt FG , jump shot missed			
02:17				1 NWOKO M defensive rebound (3)
02:04	13 ESTRELLA J foul personal (1 - 8)			8 TAMBA P foul received (2)
02:04	1 EVANS A substitution out			
02:04	13 ESTRELLA J substitution out			
02:04	0 GILLESPIE J substitution in			
02:04	6 BROWN II D substitution in			
02:04				8 TAMBA P 1&1 free throw 1 missed
02:03	34 OKPARA F defensive rebound (3)			
01:48	34 OKPARA F foul received (2)			1 NWOKO M foul shooting (2 - 9)
01:48	34 OKPARA F free throw 1 - 2 made (1)	35-26	9	
01:48	34 OKPARA F free throw 2 - 2 missed			
01:47	10 AMENT N offensive rebound (5)			
01:42	10 AMENT N 2pt FG second chance outside the paint, jump shot missed			
01:37				0 MOSLEY M defensive rebound (1)
01:25	0 GILLESPIE J foul received (1)			1 NWOKO M foul offensive (3 - 10)
01:25				1 NWOKO M turnover offensive (1)
01:25				1 NWOKO M substitution out
01:25				6 MILLER III R substitution in
01:06	10 AMENT N 2pt FG from turnover in the paint, jump shot blocked			
01:06				6 MILLER III R block (1)
01:01				0 MOSLEY M defensive rebound (2)
00:39		35-29	6	8 TAMBA P 3pt FG , jump shot made (7)
00:39				2 REECE J assist (2)
00:37	6 BROWN II D foul shooting (1 - 9)			8 TAMBA P foul received (3)
00:37	6 BROWN II D substitution out			
00:37	23 CAREY J substitution in			
00:37				8 TAMBA P free throw 1 - 1 missed
00:36	23 CAREY J defensive rebound (4)			
00:28	Timeout short			
00:06	turnover shot clock (5)			
00:06				Timeout short
00:06	23 CAREY J substitution out			
00:06	13 ESTRELLA J substitution in			
00:00				7 CARTER P 3pt FG from turnover, jump shot missed
00:00	10 AMENT N defensive rebound (6)			
END OF PERIOD				
TENN 35-29 LSU				



Officials: Byron Jarrett, Lucas Santos, Bharat Ramnanan

LSU - 29

NO.	Name	F	Min	FG	3P	FT	Rebounds			Fouls		TP	AS	TO	ST	Blocks		+/-
				M-A	M-A	M-A	OR	DR	TOT	PF	FD					BS	BA	
8	Pablo Tamba	F	17:31	3-6	1-1	0-4	0	1	1	1	3	7	0	0	0	0	0	0
10	Marquel Sutton	F	12:06	0-4	0-1	0-0	0	2	2	2	0	0	0	0	0	0	1	-9
1	Michael Nwoko	C	14:10	2-5	0-0	3-3	2	1	3	3	2	7	0	1	0	0	0	-8
2	Jalen Reece	G	20:00	2-3	1-1	4-4	0	0	0	0	2	9	2	0	0	0	0	-6
4	Rashad King	G	06:28	0-1	0-1	0-0	0	0	0	2	0	0	1	0	1	0	0	-7
7	PJ Carter		12:01	0-3	0-3	0-0	0	0	0	0	0	0	0	1	0	0	0	-3
6	Robert Miller III		05:50	0-0	0-0	0-0	0	1	1	2	0	0	0	0	2	1	0	2
0	Mazi Mosley		11:54	2-4	2-3	0-0	0	2	2	0	2	6	1	0	0	0	0	1
Team							0	1	1	0	0	0		0				
Totals				9-26	4-10	7-11	2	8	10	10	9	29	4	2	3	1	1	-6

Shooting By Period		
1 st FG%	9-26	34.6%
3PT%	4-10	40.0%
FT%	7-11	63.6%
GM FG%	9-26	34.6%
3PT%	4-10	40.0%
FT%	7-11	63.6%

Dead Ball Rebounds: 1, 0

Major Fouls: NONE

Tennessee - 35

NO.	Name	F	Min	FG	3P	FT	Rebounds			Fouls		TP	AS	TO	ST	Blocks		+/-
				M-A	M-A	M-A	OR	DR	TOT	PF	FD					BS	BA	
10	Nate Ament	F	15:38	3-10	0-3	2-2	2	4	6	0	2	8	1	0	0	1	1	4
13	J.P. Estrella	F	10:28	4-5	0-0	1-2	1	1	2	1	2	9	0	0	0	0	0	0
34	Felix Okpara	C	12:26	0-2	0-0	1-2	0	3	3	1	2	1	0	0	0	0	0	-1
0	Ja'Kobi Gillespie	G	15:07	1-3	1-3	0-0	0	1	1	0	1	3	2	2	0	0	0	6
3	Bishop Boswell	G	10:00	0-0	0-0	0-0	1	1	2	2	0	0	2	0	0	0	0	3
6	DeWayne Brown II		09:02	0-0	0-0	1-2	1	0	1	1	2	1	2	0	0	0	0	6
23	Jaylen Carey		08:05	2-2	0-0	1-2	0	4	4	2	1	5	2	1	1	0	0	7
24	Troy Henderson		02:30	0-1	0-1	0-0	0	0	0	0	0	0	1	1	0	0	0	2
1	Amari Evans		06:45	0-0	0-0	0-0	0	2	2	0	0	0	1	0	0	0	0	0
35	Ethan Burg		10:00	3-3	2-2	0-0	0	1	1	2	0	8	0	0	0	0	0	3
Team							1	1	2	0	0	0		1				
Totals				13-26	3-9	6-10	6	18	24	9	10	35	11	5	1	1	1	6

Shooting By Period		
1 st FG%	13-26	50.0%
3PT%	3-9	33.3%
FT%	6-10	60%
GM FG%	13-26	50.0%
3PT%	3-9	33.3%
FT%	6-10	60.0%

Dead Ball Rebounds: 3, 0

Major Fouls: NONE

	LSU	TENN
Biggest lead	0 (1 st 20:00)	12 (1 st 4:44)
Best Scoring Run	3 (1 st 17:50)	8 (1 st 11:22)
Lead Changes	0	
Times Tied	0	
Time with Lead	00:00	19:28

Points from	LSU	TENN
Turnovers	2	2
Paint	6	18
Second Chance	0	7
Fast Breaks	2	2
Bench	6	14

	Period by Period Scoring		
	1st	2nd	TOT
LSU	29	34	63
TENN	35	38	73



LSU at Tennessee

02/14/26 Food City Center, Knoxville, Tennessee
2025-2026 Men's Basketball

Officials: Byron Jarrett, Lucas Santos, Bharat Ramnanan

Quarter 2

Quarter Starters:

TENN	0 Gillespie J	3 Boswell B	10 Ament N	13 Estrella J	34 Okpara F
LSU	2 Reece J	4 King R	6 Miller III R	8 Tamba P	10 Sutton M

Game Time	TENN	Score	Diff	LSU
20:00	35 BURG E substitution out			
20:00	3 BOSWELL B substitution in			
20:00				0 MOSLEY M substitution out
20:00				7 CARTER P substitution out
20:00				4 KING R substitution in
20:00				10 SUTTON M substitution in
19:37	34 OKPARA F 2pt FG in the paint, hook shot missed			
19:33				10 SUTTON M defensive rebound (3)
19:16		35-32	3	8 TAMBA P 3pt FG , jump shot made (10)
19:16				2 REECE J assist (3)
18:51	10 AMENT N 2pt FG in the paint, driving layup missed			
18:48				10 SUTTON M defensive rebound (4)
18:24		35-35	0	2 REECE J 3pt FG , jump shot made (12)
17:58	3 BOSWELL B 2pt FG outside the paint, jump shot made (2)	37-35	2	
17:38		37-37	0	10 SUTTON M 2pt FG in the paint, dunk, made (2)
17:38				2 REECE J assist (4)
17:10	0 GILLESPIE J 3pt FG , jump shot missed			
17:07	34 OKPARA F offensive rebound (4)			
17:00	0 GILLESPIE J 3pt FG second chance, jump shot made (6)	40-37	3	
17:00	3 BOSWELL B assist (3)			
16:32		40-40	0	2 REECE J 3pt FG , jump shot made (15)
16:32				4 KING R assist (2)
16:18	13 ESTRELLA J foul received (3)			6 MILLER III R foul shooting (3 - 1)
16:18	13 ESTRELLA J free throw 1 - 2 made (10)	41-40	1	
16:18				4 KING R substitution out
16:18				0 MOSLEY M substitution in
16:18	13 ESTRELLA J free throw 2 - 2 missed			
16:17				defensive rebound (13)
16:00				10 SUTTON M 2pt FG in the paint, layup missed
15:55	34 OKPARA F defensive rebound (5)			
15:42	0 GILLESPIE J 2pt FG in the paint, jump shot missed			
15:38				10 SUTTON M defensive rebound (5)
15:35	34 OKPARA F foul shooting (2 - 1)			10 SUTTON M foul received (1)
15:35	Timeout commercial			
15:35	13 ESTRELLA J substitution out			
15:35	34 OKPARA F substitution out			
15:35	6 BROWN II D substitution in			
15:35	23 CAREY J substitution in			
15:35		41-41	0	10 SUTTON M free throw fast break 1 - 2 made (3)
15:35		41-42	-1	10 SUTTON M free throw fast break 2 - 2 made (4)
15:12	6 BROWN II D 2pt FG in the paint, floating jump shot missed			
15:07				10 SUTTON M defensive rebound (6)
14:50				10 SUTTON M 3pt FG , jump shot missed



LSU at Tennessee

02/14/26 Food City Center, Knoxville, Tennessee
2025-2026 Men's Basketball

Officials: Byron Jarrett, Lucas Santos, Bharat Ramnanan

Game Time	TENN	Score	Diff	LSU
14:46	6 BROWN II D defensive rebound (2)			
14:30	23 CAREY J turnover lost ball (out of bounds) (2)			
14:28		41-44	-3	10 SUTTON M 2pt FG fast break from turnover in the paint, dunk, made (6)
14:28				0 MOSLEY M assist (2)
14:02	23 CAREY J 2pt FG in the paint, jump shot missed			
13:57	23 CAREY J offensive rebound (5)			
13:57	23 CAREY J 2pt FG second chance in the paint, tip-in layup made (7)	43-44	-1	
13:29		43-46	-3	6 MILLER III R 2pt FG outside the paint, hook shot made (2)
13:18	6 BROWN II D foul received (3)			6 MILLER III R foul shooting (4 - 2)
13:18	6 BROWN II D free throw 1 - 2 made (2)	44-46	-2	
13:18				6 MILLER III R substitution out
13:18				1 NWOKO M substitution in
13:18	6 BROWN II D free throw 2 - 2 made (3)	45-46	-1	
13:18	6 BROWN II D substitution out			
13:18	35 BURG E substitution in			
13:06	3 BOSWELL B foul personal (3 - 2)			10 SUTTON M foul received (2)
13:06	3 BOSWELL B substitution out			
13:06	13 ESTRELLA J substitution in			
12:54				0 MOSLEY M 3pt FG , jump shot missed
12:52				8 TAMBA P offensive rebound (2)
12:43				2 REECE J 3pt FG second chance, jump shot missed
12:40	defensive rebound (29)			
12:14	10 AMENT N foul received (3)			1 NWOKO M foul shooting (4 - 3)
12:14	10 AMENT N free throw 1 - 2 made (9)	46-46	0	
12:14				1 NWOKO M substitution out
12:14				4 KING R substitution in
12:14	10 AMENT N free throw 2 - 2 made (10)	47-46	1	
12:00		47-48	-1	4 KING R 2pt FG in the paint, layup made (2)
11:55	10 AMENT N 2pt FG fast break in the paint, layup made (12)	49-48	1	
11:55	0 GILLESPIE J assist (3)			
11:55	10 AMENT N foul received (4)			4 KING R foul shooting (3 - 4)
11:55	Timeout commercial			
11:55	10 AMENT N free throw fast break 1 - 1 made (13)	50-48	2	
11:41				10 SUTTON M 2pt FG in the paint, layup blocked
11:41	10 AMENT N block (2)			
11:37				10 SUTTON M offensive rebound (7)
11:36		50-50	0	10 SUTTON M 2pt FG second chance in the paint, layup made (8)
11:14	0 GILLESPIE J 3pt FG , jump shot made (9)	53-50	3	
11:14	23 CAREY J assist (3)			
10:51				4 KING R 3pt FG , jump shot missed
10:47	13 ESTRELLA J defensive rebound (3)			
10:35	23 CAREY J 2pt FG in the paint, layup missed			
10:31	13 ESTRELLA J offensive rebound (4)			
10:31	13 ESTRELLA J 2pt FG second chance in the paint, tip-in layup made (12)	55-50	5	
10:23				Timeout short
10:23	23 CAREY J substitution out			



LSU at Tennessee

02/14/26 Food City Center, Knoxville, Tennessee
2025-2026 Men's Basketball

Game Time: 6:01 PM
Game Duration: 1:56
Attendance: 21,678

Officials: Byron Jarrett, Lucas Santos, Bharat Ramnanan

Game Time	TENN	Score	Diff	LSU
10:23	34 OKPARA F substitution in			
10:23				8 TAMBA P substitution out
10:23				1 NWOKO M substitution in
10:13				0 MOSLEY M 3pt FG , jump shot missed
10:09	13 ESTRELLA J defensive rebound (5)			
09:54	35 BURG E turnover bad pass (1)			
09:40				1 NWOKO M 2pt FG from turnover outside the paint, hook shot missed
09:36	34 OKPARA F defensive rebound (6)			
09:28	0 GILLESPIE J 3pt FG , jump shot made (12)	58-50	8	
09:00		58-52	6	1 NWOKO M 2pt FG outside the paint, hook shot made (9)
09:00				4 KING R assist (3)
08:42	10 AMENT N 2pt FG outside the paint, jump shot missed			
08:37	13 ESTRELLA J offensive rebound (6)			
08:37	13 ESTRELLA J 2pt FG second chance in the paint, tip-in layup made (14)	60-52	8	
08:26	13 ESTRELLA J foul shooting (2 - 3)			1 NWOKO M foul received (3)
08:26				1 NWOKO M free throw 1 - 2 missed
08:26				offensive dead ball rebound (2)
08:26				0 MOSLEY M substitution out
08:26				7 CARTER P substitution in
08:26		60-53	7	1 NWOKO M free throw 2 - 2 made (10)
08:07	10 AMENT N 2pt FG in the paint, jump shot missed			
08:07	34 OKPARA F offensive rebound (7)			
08:07	34 OKPARA F foul received (3)			10 SUTTON M foul personal (3 - 5)
08:05	13 ESTRELLA J foul offensive (3 - 4)			10 SUTTON M foul received (3)
08:05	13 ESTRELLA J turnover offensive (1)			
08:05	35 BURG E substitution out			
08:05	3 BOSWELL B substitution in			
07:38				4 KING R 2pt FG from turnover outside the paint, jump shot missed
07:34	3 BOSWELL B defensive rebound (3)			
07:16	3 BOSWELL B 3pt FG , jump shot missed			
07:13	offensive rebound (37)			
07:13	Timeout commercial			
06:55	10 AMENT N 2pt FG second chance in the paint, layup missed			
06:52	13 ESTRELLA J offensive rebound (7)			
06:52	13 ESTRELLA J 2pt FG second chance in the paint, tip-in layup missed			
06:51	13 ESTRELLA J offensive rebound (8)			
06:51	13 ESTRELLA J 2pt FG second chance in the paint, tip-in layup made (16)	62-53	9	
06:34		62-55	7	10 SUTTON M 2pt FG in the paint, driving layup made (10)
06:23	10 AMENT N 2pt FG in the paint, turnaround jump shot made (15)	64-55	9	
06:23	0 GILLESPIE J assist (4)			
06:01		64-58	6	10 SUTTON M 3pt FG , jump shot made (13)
06:01				7 CARTER P assist (1)
05:28	10 AMENT N 2pt FG in the paint, jump shot blocked			
05:28				1 NWOKO M block (1)
05:23				1 NWOKO M defensive rebound (4)



LSU at Tennessee

02/14/26 Food City Center, Knoxville, Tennessee
2025-2026 Men's Basketball

Officials: Byron Jarrett, Lucas Santos, Bharat Ramnanan

Game Time	TENN	Score	Diff	LSU
05:21	0 GILLESPIE J steal (1)			2 REECE J turnover bad pass (1)
05:11	3 BOSWELL B turnover bad pass (1)			10 SUTTON M steal (1)
05:10	3 BOSWELL B foul personal (4 - 5)			4 KING R foul received (1)
05:10	3 BOSWELL B substitution out			
05:10	35 BURG E substitution in			
05:10				1 NWOKO M substitution out
05:10				7 CARTER P substitution out
05:10				6 MILLER III R substitution in
05:10				8 TAMBA P substitution in
04:57				2 REECE J 3pt FG from turnover, jump shot missed
04:53				6 MILLER III R offensive rebound (2)
04:48		64-60	4	10 SUTTON M 2pt FG from turnover second chance in the paint, layup made (15)
04:48				8 TAMBA P assist (1)
04:33	0 GILLESPIE J 3pt FG , jump shot missed			
04:30	35 BURG E offensive rebound (2)			
04:16	10 AMENT N 2pt FG second chance in the paint, jump shot made (17)	66-60	6	
04:16	0 GILLESPIE J assist (5)			
03:46	13 ESTRELLA J foul shooting (4 - 6)			8 TAMBA P foul received (4)
03:46	Timeout commercial			
03:46				8 TAMBA P free throw 1 - 2 missed
03:46				offensive dead ball rebound (3)
03:46		66-61	5	8 TAMBA P free throw 2 - 2 made (11)
03:35	10 AMENT N foul received (5)			8 TAMBA P foul personal (2 - 6)
03:28	34 OKPARA F 2pt FG in the paint, layup made (3)	68-61	7	
03:28	0 GILLESPIE J assist (6)			
03:08				6 MILLER III R 2pt FG in the paint, layup missed
03:05				10 SUTTON M offensive rebound (8)
03:04				4 KING R 3pt FG second chance, jump shot missed
03:01				6 MILLER III R offensive rebound (3)
02:59				4 KING R 3pt FG second chance, jump shot missed
02:55	0 GILLESPIE J defensive rebound (2)			
02:36	35 BURG E 3pt FG , jump shot missed			
02:33				6 MILLER III R defensive rebound (4)
02:27				10 SUTTON M 2pt FG in the paint, layup missed
02:24	10 AMENT N defensive rebound (7)			
02:24				4 KING R substitution out
02:24				0 MOSLEY M substitution in
02:24	35 BURG E substitution out			
02:24	3 BOSWELL B substitution in			
02:01	10 AMENT N 2pt FG in the paint, layup missed			
01:58				10 SUTTON M defensive rebound (9)
01:46	0 GILLESPIE J foul personal (1 - 7)			8 TAMBA P foul received (5)
01:46		68-62	6	8 TAMBA P 1&1 free throw 1 made (12)
01:46		68-63	5	8 TAMBA P 1&1 free throw 2 made (13)
01:27	10 AMENT N foul received (6)			8 TAMBA P foul personal (3 - 7)
01:27	10 AMENT N 1&1 free throw 1 made (18)	69-63	6	
01:27	10 AMENT N 1&1 free throw 2 missed			
01:25	13 ESTRELLA J offensive rebound (9)			



Official Basketball Play by Play - Second Half

LSU at Tennessee

02/14/26 Food City Center, Knoxville, Tennessee
2025-2026 Men's Basketball

Game Time: 6:01 PM

Game Duration: 1:56

Attendance: 21,678

Officials: Byron Jarrett, Lucas Santos, Bharat Ramnanan

Game Time	TENN	Score	Diff	LSU
01:14	10 AMENT N foul received (7)			8 TAMBA P foul personal (4 - 8)
01:14	10 AMENT N 1&1 free throw 1 made (19)	70-63	7	
01:14	10 AMENT N 1&1 free throw 2 made (20)	71-63	8	
00:55				8 TAMBA P 3pt FG , jump shot missed
00:55	10 AMENT N defensive rebound (8)			
00:55	10 AMENT N foul received (8)			10 SUTTON M foul personal (4 - 9)
00:55	10 AMENT N 1&1 free throw 1 made (21)	72-63	9	
00:55	10 AMENT N 1&1 free throw 2 made (22)	73-63	10	
00:55				6 MILLER III R substitution out
00:55				1 NWOKO M substitution in
00:34				2 REECE J 2pt FG in the paint, floating jump shot missed
00:32				1 NWOKO M offensive rebound (5)
00:22				10 SUTTON M 2pt FG second chance in the paint, jump shot missed
00:18	10 AMENT N defensive rebound (9)			
END OF GAME				
TENN 73-63 LSU				



LSU at Tennessee

02/14/26 Food City Center, Knoxville, Tennessee
2025-2026 Men's Basketball

Game Time: 6:01 PM
Game Duration: 1:56
Attendance: 21,678

Officials: Byron Jarrett, Lucas Santos, Bharat Ramnanan

LSU - 34

NO.	Name	F	Min	FG	3P	FT	Rebounds			Fouls		TP	AS	TO	ST	Blocks		+/-	
				M-A	M-A	M-A	OR	DR	TOT	PF	FD					BS	BA		
8	Pablo Tamba	F	14:47	1-2	1-2	3-4	1	0	1	3	2	6	1	0	0	0	0	-3	
10	Marquel Sutton	F	20:00	6-11	1-2	2-2	2	5	7	2	3	15	0	0	1	0	1	-4	
1	Michael Nwoko	C	07:12	1-2	0-0	1-2	1	1	2	1	1	3	0	0	0	1	0	-3	
2	Jalen Reece	G	20:00	2-5	2-4	0-0	0	0	0	0	0	6	2	1	0	0	0	-4	
4	Rashad King	G	13:32	1-5	0-3	0-0	0	0	0	1	1	2	2	0	0	0	0	-2	
0	Mazi Mosley		10:16	0-2	0-2	0-0	0	0	0	0	0	0	1	0	0	0	0	-10	
7	PJ Carter		03:16	0-0	0-0	0-0	0	0	0	0	0	0	1	0	0	0	0	2	
6	Robert Miller III		10:57	1-2	0-0	0-0	2	1	3	2	0	2	0	0	0	0	0	4	
Team							0	1	1	0	0	0	0	0	0	0	0	0	
Totals				12-29	4-13	6-8	6	8	14	9	7	34	7	1	1	1	1	1	-4

Shooting By Period		
2 nd FG%	12-29	41.4%
3PT%	4-13	30.8%
FT%	6-8	75%
GM FG%	12-29	41.4%
3PT%	4-13	30.8%
FT%	6-8	75.0%

Dead Ball Rebounds: 2, 0

Major Fouls: NONE

Tennessee - 38

NO.	Name	F	Min	FG	3P	FT	Rebounds			Fouls		TP	AS	TO	ST	Blocks		+/-	
				M-A	M-A	M-A	OR	DR	TOT	PF	FD					BS	BA		
10	Nate Ament	F	20:00	3-9	0-0	8-9	0	3	3	0	6	14	0	0	0	1	1	4	
13	J.P. Estrella	F	17:31	3-4	0-0	1-2	5	2	7	3	1	7	0	1	0	0	0	6	
34	Felix Okpara	C	14:48	1-2	0-0	0-0	2	2	4	1	1	2	0	0	0	0	0	0	
0	Ja'Kobi Gillespie	G	20:00	3-6	3-5	0-0	0	1	1	1	0	9	4	0	1	0	0	4	
3	Bishop Boswell	G	12:13	1-2	0-1	0-0	0	1	1	2	0	2	1	1	0	0	0	-5	
6	DeWayne Brown II		02:17	0-1	0-0	2-2	0	1	1	0	1	2	0	0	0	0	0	-2	
23	Jaylen Carey		05:12	1-3	0-0	0-0	1	0	1	0	0	2	1	1	0	0	0	4	
35	Ethan Burg		07:59	0-1	0-1	0-0	1	0	1	0	0	0	0	1	0	0	0	9	
Team							1	1	2	0	0	0	0	0	0	0	0		
Totals				12-28	3-7	11-13	10	11	21	7	9	38	6	4	1	1	1	1	4

Shooting By Period		
2 nd FG%	12-28	42.9%
3PT%	3-7	42.9%
FT%	11-13	84.6%
GM FG%	12-28	42.9%
3PT%	3-7	42.9%
FT%	11-13	84.6%

Dead Ball Rebounds: 0, 0

Major Fouls: NONE

	LSU	TENN
Biggest lead	3 (2 nd 14:28)	10 (2 nd 0:55)
Best Scoring Run	6 (2 nd 18:24)	8 (2 nd 9:28)
Lead Changes	4	
Times Tied	6	
Time with Lead	03:26	14:31

	LSU	TENN
Points from	4	0
Turnovers	12	16
Paint	4	15
Second Chance	4	5
Fast Breaks	2	4
Bench		

	Period by Period Scoring		
	1st	2nd	TOT
LSU	29	34	63
TENN	35	38	73



LSU at Tennessee

02/14/26 Food City Center, Knoxville, Tennessee
2025-2026 Men's Basketball

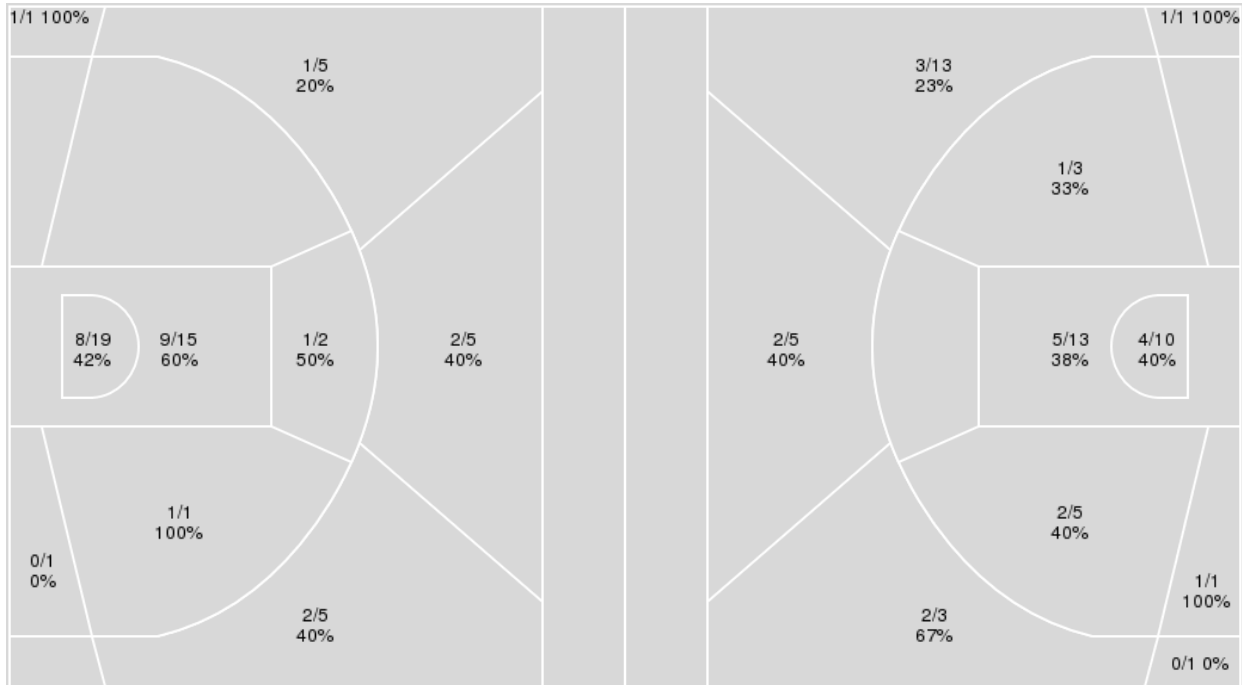
Officials: Byron Jarrett, Lucas Santos, Bharat Ramnanan

Players => All; FG Types => All ; Results => All ;

Players => All; FG Types => All ; Results => All ;

Tennessee

LSU



Tennessee	M/A	%
Field Goals	25/54	46
2 Points	19/38	50
3 Points	6/16	38
Free Throws	17/23	74

LSU	M/A	%
Field Goals	21/55	38
2 Points	13/32	41
3 Points	8/23	35
Free Throws	13/19	68



LSU at Tennessee

02/14/26 Food City Center, Knoxville, Tennessee
2025-2026 Men's Basketball

Game Time: 6:01 PM
Game Duration: 1:56
Attendance: 21,678

Officials: Byron Jarrett, Lucas Santos, Bharat Ramnanan

LSU

No	Name	Mins		Score		Points Diff		Points per Min		Assists		Rebounds		Steals		Turnovers	
		On	Off	On	Off	On	Off	On	Off	On	Off	On	Off	On	Off	On	Off
0	Mazi Mosley	22:10	17:50	36-45	27-28	-9	-1	1.62	1.51	5	6	13	11	0	4	1	2
1	Michael Nwoko	21:22	18:38	30-41	33-32	-11	1	1.40	1.77	5	6	11	13	2	2	3	0
2	Jalen Reece	40:00	00:00	63-73	0-0	-10	0	1.57	0.00	11	0	24	0	4	0	3	0
4	Rashad King	20:00	20:00	32-41	31-32	-9	-1	1.60	1.55	7	4	12	12	3	1	2	1
6	Robert Miller III	16:47	23:13	29-23	34-50	6	-16	1.73	1.46	6	5	12	12	2	2	0	3
7	PJ Carter	15:17	24:43	22-23	41-50	-1	-9	1.44	1.66	4	7	6	18	3	1	3	0
8	Pablo Tamba	32:18	07:42	55-58	8-15	-3	-7	1.70	1.04	9	2	21	3	3	1	1	2
10	Marquel Sutton	32:06	07:54	48-61	15-12	-13	3	1.50	1.90	8	3	21	3	3	1	2	1

Tennessee

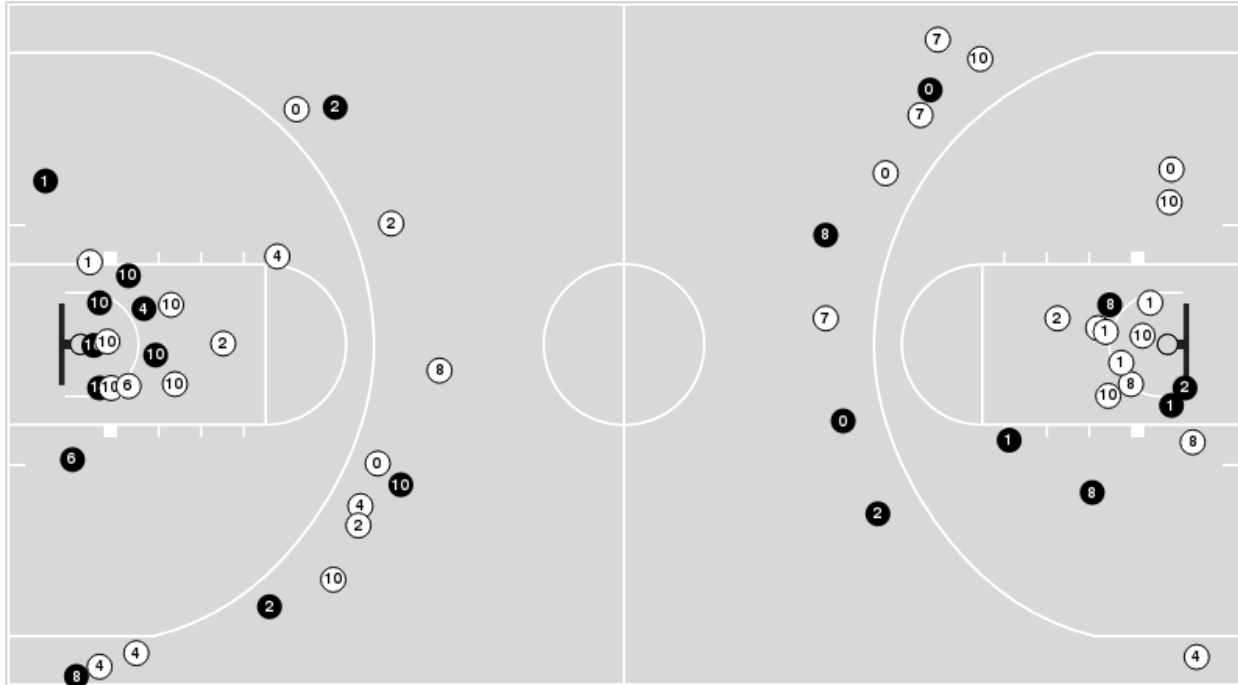
No	Name	Mins		Score		Points Diff		Points per Min		Assists		Rebounds		Steals		Turnovers	
		On	Off	On	Off	On	Off	On	Off	On	Off	On	Off	On	Off	On	Off
0	Ja'Kobi Gillespie	35:07	04:53	65-55	8-8	10	0	1.85	1.64	16	1	40	5	2	0	8	1
1	Amari Evans	06:45	33:15	10-10	63-53	0	10	1.48	1.89	3	14	6	39	1	1	1	8
3	Bishop Boswell	22:13	17:47	36-38	37-25	-2	12	1.62	2.08	8	9	23	22	1	1	4	5
6	DeWayne Brown II	11:19	28:41	21-17	52-46	4	6	1.86	1.81	5	12	14	31	1	1	4	5
10	Nate Ament	35:38	04:22	66-58	7-5	8	2	1.85	1.60	14	3	40	5	1	1	8	1
13	J.P. Estrella	27:59	12:01	52-46	21-17	6	4	1.86	1.75	12	5	30	15	1	1	4	5
23	Jaylen Carey	13:17	26:43	29-18	44-45	11	-1	2.18	1.65	7	10	16	29	1	1	5	4
24	Troy Henderson	02:30	37:30	5-3	68-60	2	8	2.00	1.81	1	16	4	41	0	2	1	8
34	Felix Okpara	27:14	12:46	44-45	29-18	-1	11	1.62	2.27	10	7	30	15	1	1	5	4
35	Ethan Burg	17:59	22:01	37-25	36-38	12	-2	2.06	1.64	9	8	22	23	1	1	5	4



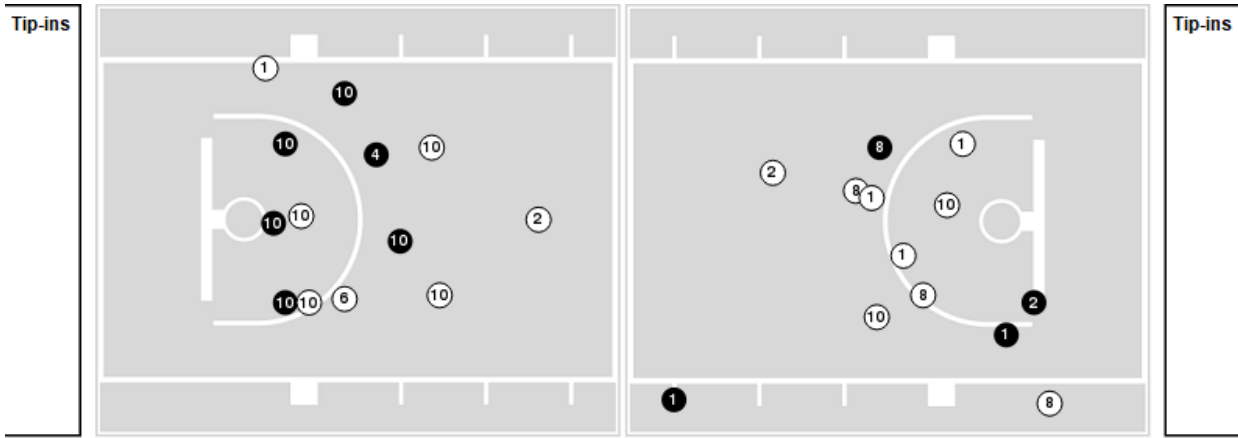
Officials: Byron Jarrett, Lucas Santos, Bharat Ramnanan

Players => All ; FG Types => All ; Results => All ;
LSU

All Field Goals



Shots in the Paint



● Made ○ Missed N - Player Number

LSU	M/A	%
Field Goals	21/55	38
2 Points	13/32	41
3 Points	8/23	35
Free Throws	13/19	68

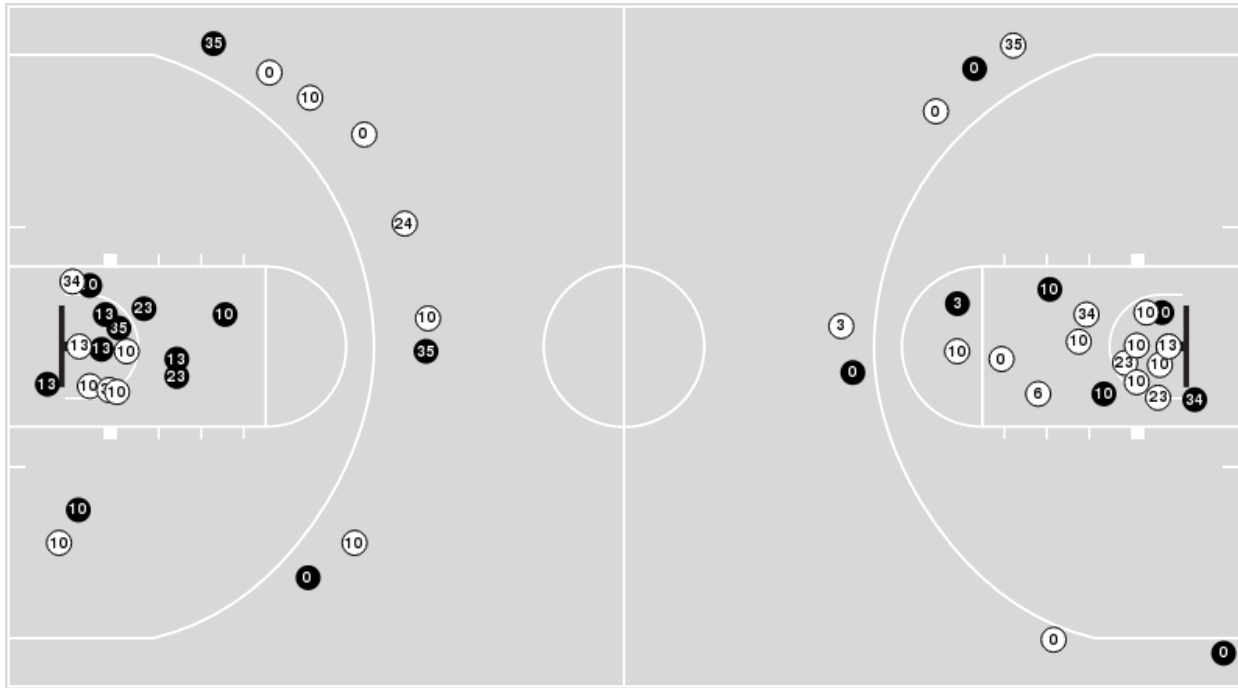
LSU	M/A	%
Points in the Paint	18 (9/23)	39
Fast Break Points	6 (5/5)	100
Second Chance Points	4 (2/8)	25
Effective FG%	45	



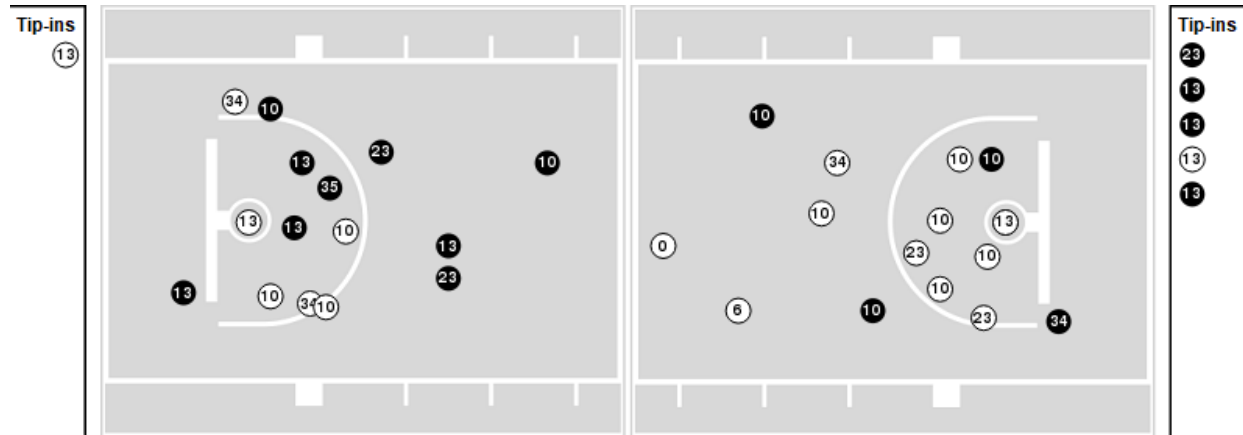
Players => All ; FG Types => All ; Results => All ;

Tennessee

All Field Goals



Shots in the Paint



● Made ○ Missed N - Player Number

Tennessee	M/A	%
Field Goals	25/54	46
2 Points	19/38	50
3 Points	6/16	38
Free Throws	17/23	74

Tennessee	M/A	%
Points in the Paint	34 (17/34)	50
Fast Break Points	7 (5/5)	100
Second Chance Points	22 (11/16)	69
Effective FG%	52	



LSU at Tennessee

02/14/26 Food City Center, Knoxville, Tennessee
2025-2026 Men's Basketball

Officials: Byron Jarrett, Lucas Santos, Bharat Ramnanan

LSU

Lineup	Quarter On	Time On	Quarter Off	Time Off	Time on Court	Score	Score Diff	Reb	Stl	Tov	Ass	PPP
1- Nwoko M/ 2- Reece J/ 4- King R/ 8- Tamba P/ 10- Sutton M/	1	20:00	1	16:22	03:38	5-7	-2	2	1	0	1	0.8333
1- Nwoko M/ 2- Reece J/ 7- Carter P/ 8- Tamba P/ 10- Sutton M/	1	16:22	1	16:05	00:17	0-0	0	0	0	0	0	0.0000
2- Reece J/ 6- Miller III R/ 7- Carter P/ 8- Tamba P/ 10- Sutton M/	1	16:05	1	14:12	01:53	1-2	-1	1	1	0	0	0.4310
2- Reece J/ 4- King R/ 6- Miller III R/ 7- Carter P/ 8- Tamba P/	1	14:12	1	13:19	00:53	1-0	1	0	1	0	0	0.6944
1- Nwoko M/ 2- Reece J/ 4- King R/ 7- Carter P/ 10- Sutton M/	1	13:19	1	11:54	01:25	0-5	-5	1	0	1	0	0.0000
0- Mosley M/ 1- Nwoko M/ 2- Reece J/ 4- King R/ 10- Sutton M/	1	11:54	1	11:22	00:32	0-1	-1	1	0	0	0	0.0000
0- Mosley M/ 1- Nwoko M/ 2- Reece J/ 8- Tamba P/ 10- Sutton M/	1	11:22	1	07:33	03:49	8-8	0	2	0	0	0	1.6393
0- Mosley M/ 1- Nwoko M/ 2- Reece J/ 7- Carter P/ 10- Sutton M/	1	07:33	1	07:01	00:32	0-0	0	0	0	0	0	0.0000
0- Mosley M/ 1- Nwoko M/ 2- Reece J/ 7- Carter P/ 8- Tamba P/	1	07:01	1	04:27	02:34	7-8	-1	0	0	0	2	1.5766
0- Mosley M/ 2- Reece J/ 6- Miller III R/ 7- Carter P/ 8- Tamba P/	1	04:27	1	02:48	01:39	2-3	-1	0	0	0	0	2.0000
0- Mosley M/ 1- Nwoko M/ 2- Reece J/ 7- Carter P/ 8- Tamba P/	1	02:48	1	01:25	01:23	2-1	1	2	0	1	0	0.8621
0- Mosley M/ 2- Reece J/ 6- Miller III R/ 7- Carter P/ 8- Tamba P/	1	01:25	2	20:00	01:25	3-0	3	1	0	0	1	1.2295
2- Reece J/ 4- King R/ 6- Miller III R/ 8- Tamba P/ 10- Sutton M/	2	20:00	2	16:18	03:42	11-6	5	2	0	0	3	2.7500
0- Mosley M/ 2- Reece J/ 6- Miller III R/ 8- Tamba P/ 10- Sutton M/	2	16:18	2	13:18	03:00	6-3	3	3	0	0	1	1.2295
0- Mosley M/ 1- Nwoko M/ 2- Reece J/ 8- Tamba P/ 10- Sutton M/	2	13:18	2	12:14	01:04	0-2	-2	1	0	0	0	0.0000
0- Mosley M/ 2- Reece J/ 4- King R/ 8- Tamba P/ 10- Sutton M/	2	12:14	2	10:23	01:51	4-9	-5	1	0	0	0	1.3333
0- Mosley M/ 1- Nwoko M/ 2- Reece J/ 4- King R/ 10- Sutton M/	2	10:23	2	08:26	01:57	2-5	-3	0	0	0	1	0.5814
1- Nwoko M/ 2- Reece J/ 4- King R/ 7- Carter P/ 10- Sutton M/	2	08:26	2	05:10	03:16	6-4	2	1	1	1	1	1.3514
2- Reece J/ 4- King R/ 6- Miller III R/ 8- Tamba P/ 10- Sutton M/	2	05:10	2	02:24	02:46	3-4	-1	4	0	0	1	0.7732
0- Mosley M/ 2- Reece J/ 6- Miller III R/ 8- Tamba P/ 10- Sutton M/	2	02:24	2	00:55	01:29	2-5	-3	1	0	0	0	1.0638
0- Mosley M/ 1- Nwoko M/ 2- Reece J/ 8- Tamba P/ 10- Sutton M/	2	00:55	2	00:00	00:55	0-0	0	1	0	0	0	0.0000



LSU at Tennessee

02/14/26 Food City Center, Knoxville, Tennessee
2025-2026 Men's Basketball

Game Time: 6:01 PM
Game Duration: 1:56
Attendance: 21,678

Officials: Byron Jarrett, Lucas Santos, Bharat Ramnanan

Tennessee

Lineup	Quarter On	Time On	Quarter Off	Time Off	Time on Court	Score	Score Diff	Reb	Stl	Tov	Ass	PPP
0- Gillespie J/ 3- Boswell B/ 10- Ament N/ 13- Estrella J/ 34- Okpara F/	1	20:00	1	16:22	03:38	7-5	2	4	0	1	3	1.1667
0- Gillespie J/ 3- Boswell B/ 6- Brown II D/ 10- Ament N/ 23- Carey J/	1	16:22	1	16:22	00:00	0-0	0	0	0	0	0	0.0000
3- Boswell B/ 6- Brown II D/ 10- Ament N/ 23- Carey J/ 24- Henderson T/	1	16:22	1	14:12	02:10	2-1	1	4	0	1	0	0.6667
0- Gillespie J/ 1- Evans A/ 6- Brown II D/ 23- Carey J/ 35- Burg E/	1	14:12	1	11:54	02:18	5-1	4	3	1	1	2	1.2887
0- Gillespie J/ 6- Brown II D/ 10- Ament N/ 34- Okpara F/ 35- Burg E/	1	11:54	1	11:53	00:01	1-0	1	0	0	0	0	1.1364
0- Gillespie J/ 10- Ament N/ 13- Estrella J/ 34- Okpara F/ 35- Burg E/	1	11:53	1	11:35	00:18	0-0	0	1	0	0	0	0.0000
0- Gillespie J/ 3- Boswell B/ 10- Ament N/ 13- Estrella J/ 34- Okpara F/	1	11:35	1	09:37	01:58	6-4	2	2	0	0	2	2.0833
0- Gillespie J/ 1- Evans A/ 3- Boswell B/ 13- Estrella J/ 34- Okpara F/	1	09:37	1	07:33	02:04	2-4	-2	2	0	0	1	0.6667
0- Gillespie J/ 3- Boswell B/ 6- Brown II D/ 10- Ament N/ 23- Carey J/	1	07:33	1	07:23	00:10	0-0	0	0	0	0	0	0.0000
0- Gillespie J/ 6- Brown II D/ 10- Ament N/ 23- Carey J/ 35- Burg E/	1	07:23	1	04:47	02:36	5-4	1	3	0	1	2	1.6667
6- Brown II D/ 10- Ament N/ 23- Carey J/ 24- Henderson T/ 35- Burg E/	1	04:47	1	04:27	00:20	3-2	1	0	0	0	1	3.0000
1- Evans A/ 10- Ament N/ 13- Estrella J/ 34- Okpara F/ 35- Burg E/	1	04:27	1	02:04	02:23	3-5	-2	1	0	0	0	1.0417
0- Gillespie J/ 6- Brown II D/ 10- Ament N/ 34- Okpara F/ 35- Burg E/	1	02:04	1	00:37	01:26	1-3	-2	2	0	0	0	0.5319
0- Gillespie J/ 10- Ament N/ 23- Carey J/ 34- Okpara F/ 35- Burg E/	1	00:37	1	00:06	00:30	0-0	0	1	0	1	0	0.0000
0- Gillespie J/ 10- Ament N/ 13- Estrella J/ 34- Okpara F/ 35- Burg E/	1	00:06	2	20:00	00:06	0-0	0	1	0	0	0	0.0000
0- Gillespie J/ 3- Boswell B/ 10- Ament N/ 13- Estrella J/ 34- Okpara F/	2	20:00	2	15:35	04:25	6-11	-5	2	0	0	1	1.0204
0- Gillespie J/ 3- Boswell B/ 6- Brown II D/ 10- Ament N/ 23- Carey J/	2	15:35	2	13:18	02:17	4-6	-2	2	0	1	0	1.0309
0- Gillespie J/ 3- Boswell B/ 10- Ament N/ 23- Carey J/ 35- Burg E/	2	13:18	2	13:06	00:12	0-0	0	0	0	0	0	0.0000
0- Gillespie J/ 10- Ament N/ 13- Estrella J/ 23- Carey J/ 35- Burg E/	2	13:06	2	10:23	02:43	10-4	6	3	0	0	2	2.3148
0- Gillespie J/ 10- Ament N/ 13- Estrella J/ 34- Okpara F/ 35- Burg E/	2	10:23	2	08:05	02:18	5-3	2	4	0	2	0	1.2500
0- Gillespie J/ 3- Boswell B/ 10- Ament N/ 13- Estrella J/ 34- Okpara F/	2	08:05	2	05:10	02:55	4-5	-1	4	1	1	1	1.0000
0- Gillespie J/ 10- Ament N/ 13- Estrella J/ 34- Okpara F/ 35- Burg E/	2	05:10	2	02:24	02:46	4-3	1	3	0	0	2	1.3333
0- Gillespie J/ 3- Boswell B/ 10- Ament N/ 13- Estrella J/ 34- Okpara F/	2	02:24	2	00:00	02:24	5-2	3	3	0	0	0	1.8939



Officials: Byron Jarrett, Lucas Santos, Bharat Ramnanan

LSU

Lineup	Time	Score	Score Diff	Pts/Min	Reb	Stl	Tov	Ass	PPP
2- Reece J/ 4- King R/ 6- Miller III R/ 8- Tamba P/ 10- Sutton M/	06:28	14-10	4	2.1649	6	0	0	4	1.7766
0- Mosley M/ 1- Nwoko M/ 2- Reece J/ 8- Tamba P/ 10- Sutton M/	05:48	8-10	-2	1.3793	4	0	0	0	1.1628
1- Nwoko M/ 2- Reece J/ 4- King R/ 7- Carter P/ 10- Sutton M/	04:41	6-9	-3	1.2811	2	1	2	1	0.8065
0- Mosley M/ 2- Reece J/ 6- Miller III R/ 8- Tamba P/ 10- Sutton M/	04:29	8-8	0	1.7844	4	0	0	1	1.1834
0- Mosley M/ 1- Nwoko M/ 2- Reece J/ 7- Carter P/ 8- Tamba P/	03:57	9-9	0	2.2785	2	0	1	2	1.3314
1- Nwoko M/ 2- Reece J/ 4- King R/ 8- Tamba P/ 10- Sutton M/	03:38	5-7	-2	1.3761	2	1	0	1	0.8333
0- Mosley M/ 2- Reece J/ 6- Miller III R/ 7- Carter P/ 8- Tamba P/	03:04	5-3	2	1.6304	1	0	0	1	1.4535
0- Mosley M/ 1- Nwoko M/ 2- Reece J/ 4- King R/ 10- Sutton M/	02:29	2-6	-4	0.8054	1	0	0	1	0.4505
2- Reece J/ 6- Miller III R/ 7- Carter P/ 8- Tamba P/ 10- Sutton M/	01:53	1-2	-1	0.5310	1	1	0	0	0.4310
0- Mosley M/ 2- Reece J/ 4- King R/ 8- Tamba P/ 10- Sutton M/	01:51	4-9	-5	2.1622	1	0	0	0	1.3333
2- Reece J/ 4- King R/ 6- Miller III R/ 7- Carter P/ 8- Tamba P/	00:53	1-0	1	1.1321	0	1	0	0	0.6944
0- Mosley M/ 1- Nwoko M/ 2- Reece J/ 7- Carter P/ 10- Sutton M/	00:32	0-0	0	0.0000	0	0	0	0	0.0000
1- Nwoko M/ 2- Reece J/ 7- Carter P/ 8- Tamba P/ 10- Sutton M/	00:17	0-0	0	0.0000	0	0	0	0	0.0000



Officials: Byron Jarrett, Lucas Santos, Bharat Ramnanan

Tennessee

Lineup	Time	Score	Score Diff	Pts/Min	Reb	Stl	Tov	Ass	PPP
0- Gillespie J/ 3- Boswell B/ 10- Ament N/ 13- Estrella J/ 34- Okpara F/	15:20	28-27	1	1.8261	15	1	2	7	1.3084
0- Gillespie J/ 10- Ament N/ 13- Estrella J/ 34- Okpara F/ 35- Burg E/	05:28	9-6	3	1.6433	9	0	2	2	1.2857
0- Gillespie J/ 10- Ament N/ 13- Estrella J/ 23- Carey J/ 35- Burg E/	02:43	10-4	6	3.6810	3	0	0	2	2.3148
0- Gillespie J/ 6- Brown II D/ 10- Ament N/ 23- Carey J/ 35- Burg E/	02:36	5-4	1	1.9231	3	0	1	2	1.6667
0- Gillespie J/ 3- Boswell B/ 6- Brown II D/ 10- Ament N/ 23- Carey J/	02:27	4-6	-2	1.6327	2	0	1	0	1.0309
1- Evans A/ 10- Ament N/ 13- Estrella J/ 34- Okpara F/ 35- Burg E/	02:23	3-5	-2	1.2587	1	0	0	0	1.0417
0- Gillespie J/ 1- Evans A/ 6- Brown II D/ 23- Carey J/ 35- Burg E/	02:18	5-1	4	2.1739	3	1	1	2	1.2887
3- Boswell B/ 6- Brown II D/ 10- Ament N/ 23- Carey J/ 24- Henderson T/	02:10	2-1	1	0.9231	4	0	1	0	0.6667
0- Gillespie J/ 1- Evans A/ 3- Boswell B/ 13- Estrella J/ 34- Okpara F/	02:04	2-4	-2	0.9677	2	0	0	1	0.6667
0- Gillespie J/ 6- Brown II D/ 10- Ament N/ 34- Okpara F/ 35- Burg E/	01:27	2-3	-1	1.3699	2	0	0	0	0.7246
0- Gillespie J/ 10- Ament N/ 23- Carey J/ 34- Okpara F/ 35- Burg E/	00:30	0-0	0	0.0000	1	0	1	0	0.0000
6- Brown II D/ 10- Ament N/ 23- Carey J/ 24- Henderson T/ 35- Burg E/	00:20	3-2	1	9.0000	0	0	0	1	3.0000
0- Gillespie J/ 3- Boswell B/ 10- Ament N/ 23- Carey J/ 35- Burg E/	00:12	0-0	0	0.0000	0	0	0	0	0.0000