



Officials: Bart Lenox, Jason Baker, Erroll Lewis

Northwestern St. - 53

Record: 2-5

NO.	Name	Min	FG			3P			FT			Rebounds			Fouls		TP	AS	TO	ST	Blocks		+/-
			M-A	M-A	M-A	OR	DR	TOT	PF	FD	OR	DR	TOT	BS	BA								
2	Jerald Colonel	F 24:47	3-9	0-0	0-1	5	3	8	3	2	6	1	0	0	2	2	-21						
23	Willie Williams	F 28:43	1-3	0-0	0-3	4	4	8	0	4	2	2	3	1	0	-13							
3	Landyn Jumawan	G 22:11	0-3	0-3	1-2	0	1	1	3	1	1	2	1	2	0	-9							
9	Addison Patterson	G 25:51	1-9	0-1	2-4	5	4	9	1	2	4	2	7	2	1	-12							
10	Jon Sanders	G 24:23	5-15	4-8	0-0	0	2	2	3	1	14	0	3	0	0	-23							
1	JT Warren	15:15	2-7	0-4	0-0	0	1	1	1	0	4	0	1	0	0	-9							
5	Micah Thomas	22:05	3-9	2-5	0-0	1	1	2	1	0	8	2	1	1	0	-16							
7	Love Bettis	14:40	3-7	2-4	0-0	0	1	1	0	0	8	2	2	2	0	2							
11	Chris Mubiru	14:23	1-2	0-1	0-0	1	1	2	2	1	2	0	1	0	0	-25							
21	J.C. Riley	06:37	2-3	0-0	0-0	0	0	0	0	0	4	0	0	0	0	4							
4	Mitch Williams	01:06	0-0	0-0	0-0	0	0	0	0	0	0	0	0	0	0	2							
Team						5	1	6			0		0										
<b>Totals</b>			21-67	8-26	3-10	21	19	40	14	11	53	11	19	8	3	9	-24						

Shooting By Period		
1st FG%	11-32	34.4%
3PT%	4-12	33.3%
FT%	0-0	0%
2nd FG%	10-35	28.6%
3PT%	4-14	28.6%
FT%	3-10	30%
GM FG%	21-67	31.3%
3PT%	8-26	30.8%
FT%	3-10	30.0%

Dead Ball Rebounds: 3, 2

Technical Fouls::NONE

LSU - 77

Record: 6-1

NO.	Name	Min	FG			3P			FT			Rebounds			Fouls		TP	AS	TO	ST	Blocks		+/-
			M-A	M-A	M-A	OR	DR	TOT	PF	FD	OR	DR	TOT	BS	BA								
9	Jalen Reed	F 26:46	5-9	0-1	1-2	2	3	5	2	1	11	1	1	0	1	0	26						
11	Corey Chest	F 30:22	3-4	0-0	3-4	3	7	10	1	3	9	2	3	1	5	0	17						
1	Jordan Sears	G 26:47	6-14	6-11	0-0	1	4	5	3	1	18	2	1	0	1	2	20						
4	Dji Bailey	G 33:17	2-2	0-0	1-1	0	4	4	3	2	5	4	3	3	1	0	18						
5	Cam Carter	G 30:05	5-13	3-8	2-2	0	2	2	1	2	15	3	0	2	0	1	19						
0	Vyctorius Miller	20:48	2-7	0-3	7-7	2	3	5	0	4	11	2	1	1	0	0	18						
3	Curtis Givens III	13:13	2-6	1-3	0-0	0	0	0	1	0	5	1	1	0	0	0	4						
20	Derek Fountain	09:19	0-1	0-0	0-0	0	2	2	0	0	0	0	1	2	0	-3							
6	Robert Miller III	05:01	1-1	0-0	1-2	1	1	2	0	1	3	0	0	1	1	0	4						
2	Mike Williams III	02:11	0-0	0-0	0-0	0	0	0	0	0	0	0	0	0	0	0	1						
14	Trace Young	01:06	0-0	0-0	0-0	1	0	1	0	0	0	0	1	0	0	-2							
25	Adam Benhayoune	01:06	0-1	0-1	0-0	0	0	0	0	0	0	0	0	0	0	-2							
Team						1	2	3			0		2										
<b>Totals</b>			26-58	10-27	15-18	11	28	39	11	14	77	15	14	10	9	3	24						

Shooting By Period		
1st FG%	9-26	34.6%
3PT%	3-13	23.1%
FT%	4-6	66.7%
2nd FG%	17-32	53.1%
3PT%	7-14	50.0%
FT%	11-12	91.7%
GM FG%	26-58	44.8%
3PT%	10-27	37.0%
FT%	15-18	83.3%

Dead Ball Rebounds: 3, 1

Technical Fouls::NONE

	NSU	LSU
Biggest lead	6 (1st 7:29)	29 (2nd 4:55)
Best Scoring Run	7(2nd 3:33)	17(2nd 12:49)
Lead Changes	2	
Times Tied	5	
Time with Lead	13:12	23:08

	NSU	LSU
Points from		
Turnovers	9	14
Paint	20	32
Second Chance	13	21
Fast Breaks	7	13
Bench	26	19

	Period by Period Scoring		
	1st	2nd	TOT
NSU	26	27	53
LSU	25	52	77



**Period 1**

**Quarter Starters:**

<b>LSU</b>	1 Sears J	4 Bailey D	5 Carter C	9 Reed J	11 Chest C
<b>NSU</b>	2 Colonel J	3 Jumawan L	9 Patterson A	10 Sanders J	23 Williams W

Game Time	LSU	Score	Diff	NSU
20:00	11 CHEST C jumpball lost			2 COLONEL J jumpball won
19:48				9 PATTERSON A 2pt FG in the paint, layup blocked
19:48	9 REED J block (1)			
19:48				offensive rebound (1)
19:34				9 PATTERSON A 2pt FG second chance in the paint, layup blocked
19:34	11 CHEST C block (1)			
19:30	4 BAILEY D defensive rebound (1)			
19:26	1 SEARS J 3pt FG , jump shot missed			
19:23	9 REED J offensive rebound (1)			
19:22	9 REED J 2pt FG second chance in the paint, layup missed			
19:20	11 CHEST C offensive rebound (1)			
19:06	1 SEARS J 3pt FG second chance, jump shot made (3)	<b>3-0</b>	<b>3</b>	
19:06	5 CARTER C assist (1)			
18:51				9 PATTERSON A 2pt FG in the paint, layup missed
18:48				9 PATTERSON A offensive rebound (1)
18:47				9 PATTERSON A turnover bad pass (1)
18:28	5 CARTER C 3pt FG from turnover, jump shot missed			
18:26				2 COLONEL J defensive rebound (1)
18:26	9 REED J foul personal (1 - 1)			2 COLONEL J foul drawn (1)
18:11	11 CHEST C steal (1)			3 JUMAWAN L turnover bad pass (1)
18:05	1 SEARS J 3pt FG from turnover, jump shot blocked			
18:05				2 COLONEL J block (1)
17:58				10 SANDERS J defensive rebound (1)
17:42				10 SANDERS J 2pt FG in the paint, layup missed
17:38				23 WILLIAMS W offensive rebound (1)
17:37				10 SANDERS J 3pt FG second chance, jump shot missed
17:34				9 PATTERSON A offensive rebound (2)
17:34				9 PATTERSON A turnover out of bounds (2)
17:13	1 SEARS J 3pt FG from turnover, jump shot missed			
17:11				3 JUMAWAN L defensive rebound (1)
16:44				3 JUMAWAN L 3pt FG , jump shot missed
16:39				2 COLONEL J offensive rebound (2)
16:38		<b>3-3</b>	<b>0</b>	10 SANDERS J 3pt FG second chance, jump shot made (3)
16:38				2 COLONEL J assist (1)
16:05	9 REED J 2pt FG in the paint, jump shot missed			
16:00				9 PATTERSON A defensive rebound (3)
15:54	4 BAILEY D steal (1)			9 PATTERSON A turnover lost ball (3)
15:50	Timeout media			
15:50	11 CHEST C substitution out			
15:50	0 MILLER V substitution in			
15:48	4 BAILEY D turnover bad pass (1)			9 PATTERSON A steal (1)
15:36	4 BAILEY D steal (2)			23 WILLIAMS W turnover lost ball (1)



Official Basketball Play by Play - First Half  
**Northwestern St. at LSU**  
 11/29/24 Maravich Assembly Center, Baton Rouge  
 2024-25 Men's Basketball

**Game Time:** 7:00 PM  
**Game Duration:** 1:50  
**Attendance:** 8,042

**Officials:** Bart Lenox, Jason Baker, Erroll Lewis

Game Time	LSU	Score	Diff	NSU
15:28	5 CARTER C 3pt FG from turnover, jump shot missed			
15:24	0 MILLER V offensive rebound (1)			
15:22	9 REED J 2pt FG from turnover second chance in the paint, layup made (2)	5-3	2	
15:22	0 MILLER V assist (1)			
15:10				10 SANDERS J 2pt FG outside the paint, jump shot missed
15:04				9 PATTERSON A offensive rebound (4)
15:04		5-5	0	9 PATTERSON A 2pt FG second chance in the paint, tip-in layup made (2)
14:54	9 REED J 2pt FG in the paint, layup made (4)	7-5	2	
14:54	4 BAILEY D assist (1)			
14:38	4 BAILEY D steal (3)			9 PATTERSON A turnover lost ball (4)
14:28	0 MILLER V 2pt FG from turnover in the paint, layup missed			
14:27				2 COLONEL J defensive rebound (3)
14:00		7-7	0	2 COLONEL J 2pt FG outside the paint, jump shot made (2)
14:00				23 WILLIAMS W assist (1)
13:39	0 MILLER V 3pt FG , jump shot missed			
13:36				23 WILLIAMS W defensive rebound (2)
13:15		7-10	-3	10 SANDERS J 3pt FG , jump shot made (6)
13:15				9 PATTERSON A assist (1)
12:51	9 REED J 2pt FG in the paint, layup made (6)	9-10	-1	
12:33				3 JUMAWAN L 3pt FG , jump shot missed
12:32				offensive dead ball rebound (1)
12:32	9 REED J foul personal (2 - 2)			23 WILLIAMS W foul drawn (1)
12:24				2 COLONEL J substitution out
12:24				3 JUMAWAN L substitution out
12:24				9 PATTERSON A substitution out
12:24				10 SANDERS J substitution out
12:24				23 WILLIAMS W substitution out
12:24				1 WARREN J substitution in
12:24				5 THOMAS M substitution in
12:24				7 BETTIS L substitution in
12:24				11 MUBIRU C substitution in
12:24				21 RILEY J substitution in
12:24	4 BAILEY D substitution out			
12:24	9 REED J substitution out			
12:24	3 GIVENS III C substitution in			
12:24	11 CHEST C substitution in			
12:24	1 SEARS J substitution out			
12:24	20 FOUNTAIN D substitution in			
12:20				21 RILEY J 2pt FG second chance in the paint, layup blocked
12:20	11 CHEST C block (2)			
12:12				offensive rebound (13)
12:13				11 MUBIRU C turnover travel (1)
12:09	3 GIVENS III C 3pt FG from turnover, jump shot missed			
12:06				11 MUBIRU C defensive rebound (1)
11:51				5 THOMAS M 2pt FG in the paint, jump shot missed
11:49	11 CHEST C defensive rebound (2)			
11:45	11 CHEST C foul drawn (1)			11 MUBIRU C foul personal (1 - 1)
11:45				Timeout media



Official Basketball Play by Play - First Half  
**Northwestern St. at LSU**  
 11/29/24 Maravich Assembly Center, Baton Rouge  
 2024-25 Men's Basketball

**Game Time:** 7:00 PM  
**Game Duration:** 1:50  
**Attendance:** 8,042

**Officials:** Bart Lenox, Jason Baker, Erroll Lewis

Game Time	LSU	Score	Diff	NSU
11:19	0 MILLER V 3pt FG , jump shot missed			
11:18				defensive rebound (15)
11:01		<b>9-12</b>	<b>-3</b>	1 WARREN J 2pt FG outside the paint, jump shot made (2)
10:29	0 MILLER V 2pt FG in the paint, layup made (2)	<b>11-12</b>	<b>-1</b>	
10:10	jump ball situation			
10:10	20 FOUNTAIN D steal (1)			7 BETTIS L turnover lost ball (1)
10:10	5 CARTER C substitution out			
10:10	4 BAILEY D substitution in			
09:39	turnover shot clock (2)			
09:39				11 MUBIRU C substitution out
09:39				9 PATTERSON A substitution in
09:24	20 FOUNTAIN D steal (2)			9 PATTERSON A turnover bad pass (5)
09:21	4 BAILEY D turnover bad pass (2)			7 BETTIS L steal (1)
09:15		<b>11-14</b>	<b>-3</b>	7 BETTIS L 2pt FG fast break from turnover in the paint, layup made (2)
08:54	0 MILLER V 2pt FG outside the paint, jump shot missed			
08:50				7 BETTIS L defensive rebound (1)
08:47				1 WARREN J 3pt FG , jump shot missed
08:44	11 CHEST C defensive rebound (3)			
08:23	4 BAILEY D 2pt FG in the paint, jump shot made (2)	<b>13-14</b>	<b>-1</b>	
08:04		<b>13-17</b>	<b>-4</b>	5 THOMAS M 3pt FG , jump shot made (3)
07:46	0 MILLER V turnover lost ball (1)			
07:46	Timeout media			
07:46	20 FOUNTAIN D substitution out			
07:46	1 SEARS J substitution in			
07:46	9 REED J substitution in			
07:46	3 GIVENS III C substitution out			
07:46				1 WARREN J substitution out
07:46				10 SANDERS J substitution in
07:46				7 BETTIS L substitution out
07:46				21 RILEY J substitution out
07:46				23 WILLIAMS W substitution in
07:46				2 COLONEL J substitution in
07:29		<b>13-19</b>	<b>-6</b>	2 COLONEL J 2pt FG from turnover in the paint, layup made (4)
07:15	9 REED J turnover lost ball (1)			9 PATTERSON A steal (2)
06:56	0 MILLER V steal (1)			23 WILLIAMS W turnover lost ball (2)
06:34	1 SEARS J 3pt FG from turnover, jump shot made (6)	<b>16-19</b>	<b>-3</b>	
06:34	4 BAILEY D assist (2)			
06:14				10 SANDERS J 2pt FG outside the paint, jump shot blocked
06:14	11 CHEST C block (3)			
06:09				2 COLONEL J offensive rebound (4)
06:03				10 SANDERS J 2pt FG second chance in the paint, jump shot missed
06:01	9 REED J defensive rebound (2)			
05:53	1 SEARS J 3pt FG , jump shot made (9)	<b>19-19</b>	<b>0</b>	
05:53	4 BAILEY D assist (3)			
05:52				Timeout 30 Sec
05:52	0 MILLER V substitution out			
05:52	5 CARTER C substitution in			
05:52				5 THOMAS M substitution out



**Officials:** Bart Lenox, Jason Baker, Erroll Lewis

Game Time	LSU	Score	Diff	NSU
05:52				3 JUMAWAN L substitution in
05:32		<b>19-22</b>	<b>-3</b>	10 SANDERS J 3pt FG , jump shot made (9)
05:32				9 PATTERSON A assist (2)
05:07	11 CHEST C 2pt FG in the paint, layup missed			
05:05	11 CHEST C offensive rebound (4)			
05:05	11 CHEST C foul drawn (2)			2 COLONEL J foul shooting (1 - 2)
05:05	11 CHEST C free throw 1 - 2 missed			
05:05	offensive dead ball rebound (1)			
05:05	11 CHEST C free throw 2 - 2 made (1)	<b>20-22</b>	<b>-2</b>	
04:46				2 COLONEL J 2pt FG in the paint, layup blocked
04:46	4 BAILEY D block (1)			
04:41	9 REED J defensive rebound (3)			
04:37	11 CHEST C foul drawn (3)			2 COLONEL J foul shooting (2 - 3)
04:37	11 CHEST C free throw 1 - 2 made (2)	<b>21-22</b>	<b>-1</b>	
04:37	9 REED J substitution out			
04:37	20 FOUNTAIN D substitution in			
04:37				2 COLONEL J substitution out
04:37				1 WARREN J substitution in
04:37	11 CHEST C free throw 2 - 2 made (3)	<b>22-22</b>	<b>0</b>	
04:23		<b>22-24</b>	<b>-2</b>	10 SANDERS J 2pt FG outside the paint, jump shot made (11)
04:04	11 CHEST C turnover bad pass (1)			3 JUMAWAN L steal (1)
03:56				9 PATTERSON A 3pt FG from turnover, jump shot missed
03:52	1 SEARS J defensive rebound (1)			
03:49	1 SEARS J turnover lost ball (1)			
03:49	Timeout media			
03:48				9 PATTERSON A turnover bad pass (6)
03:38	20 FOUNTAIN D 2pt FG from turnover in the paint, layup missed			
03:35				1 WARREN J defensive rebound (1)
03:21				10 SANDERS J 3pt FG , jump shot missed
03:18	20 FOUNTAIN D defensive rebound (1)			
03:12	5 CARTER C 3pt FG , jump shot missed			
03:10				23 WILLIAMS W defensive rebound (3)
03:02				1 WARREN J 3pt FG , jump shot missed
02:59	1 SEARS J defensive rebound (2)			
02:58	1 SEARS J foul drawn (1)			3 JUMAWAN L foul personal (1 - 4)
02:58	20 FOUNTAIN D substitution out			
02:58	9 REED J substitution in			
02:56	9 REED J foul drawn (1)			10 SANDERS J foul shooting (1 - 5)
02:56	9 REED J free throw 1 - 2 made (7)	<b>23-24</b>	<b>-1</b>	
02:56				3 JUMAWAN L substitution out
02:56				5 THOMAS M substitution in
02:56	9 REED J free throw 2 - 2 missed			
02:55				23 WILLIAMS W defensive rebound (4)
02:55	11 CHEST C foul personal (1 - 3)			23 WILLIAMS W foul drawn (2)
02:55	9 REED J substitution out			
02:55	20 FOUNTAIN D substitution in			
02:34				1 WARREN J turnover travel (1)
02:34	20 FOUNTAIN D substitution out			
02:34	9 REED J substitution in			



Official Basketball Play by Play - First Half  
**Northwestern St. at LSU**  
 11/29/24 Maravich Assembly Center, Baton Rouge  
 2024-25 Men's Basketball

**Game Time:** 7:00 PM  
**Game Duration:** 1:50  
**Attendance:** 8,042

**Officials:** Bart Lenox, Jason Baker, Erroll Lewis

Game Time	LSU	Score	Diff	NSU
02:13	11 CHEST C turnover lost ball (2)			5 THOMAS M steal (1)
02:09				5 THOMAS M 2pt FG from turnover in the paint, layup missed
02:09	defensive rebound (13)			
02:00	1 SEARS J 3pt FG , jump shot missed			
01:57				9 PATTERSON A defensive rebound (5)
01:41		<b>23-26</b>	<b>-3</b>	5 THOMAS M 2pt FG in the paint, jump shot made (5)
01:10	1 SEARS J 2pt FG outside the paint, jump shot missed			
01:09	offensive dead ball rebound (2)			
01:09	turnover shot clock (9)			
01:09	9 REED J substitution out			
01:09	20 FOUNTAIN D substitution in			
01:09				10 SANDERS J substitution out
01:09				7 BETTIS L substitution in
00:41				1 WARREN J 2pt FG from turnover outside the paint, jump shot missed
00:39	defensive rebound (14)			
00:39	20 FOUNTAIN D substitution out			
00:39	9 REED J substitution in			
00:39				23 WILLIAMS W substitution out
00:39				11 MUBIRU C substitution in
00:30	9 REED J 2pt FG in the paint, dunk, made (9)	<b>25-26</b>	<b>-1</b>	
00:30	1 SEARS J assist (1)			
00:02				1 WARREN J 3pt FG , jump shot missed
00:00				9 PATTERSON A offensive rebound (6)
00:00				9 PATTERSON A 2pt FG second chance in the paint, tip-in layup missed
00:00	1 SEARS J defensive rebound (3)			
<b>END OF PERIOD</b>				
<b>LSU 25-26 NSU</b>				



**Officials:** Bart Lenox, Jason Baker, Erroll Lewis

**Northwestern St. - 26**

NO.	Name	Min	FG			Rebounds			Fouls		TP	AS	TO	ST	Blocks		+/-
			M-A	M-A	M-A	OR	DR	TOT	PF	FD					BS	BA	
2	Jerald Colonel	F 10:45	2-3	0-0	0-0	2	2	4	2	1	4	1	0	0	1	1	-2
23	Willie Williams	F 14:43	0-0	0-0	0-0	1	3	4	0	2	0	1	2	0	0	0	0
3	Landyn Jumawan	G 10:32	0-2	0-2	0-0	0	1	1	1	0	0	0	1	1	0	0	2
9	Addison Patterson	G 17:15	1-6	0-1	0-0	4	2	6	0	0	2	2	6	2	0	2	1
10	Jon Sanders	G 14:13	4-10	3-5	0-0	0	1	1	1	0	11	0	0	0	0	1	0
1	JT Warren	09:15	1-5	0-3	0-0	0	1	1	0	0	2	0	1	0	0	0	3
5	Micah Thomas	09:28	2-4	1-1	0-0	0	0	0	0	0	5	0	0	1	0	0	-1
7	Love Bettis	05:47	1-1	0-0	0-0	0	1	1	0	0	2	0	1	1	0	0	1
11	Chris Mubiru	03:25	0-0	0-0	0-0	0	1	1	1	0	0	0	1	0	0	0	-2
21	J.C. Riley	04:38	0-1	0-0	0-0	0	0	0	0	0	0	0	0	0	0	1	3
Team						2	1	3			0		0				
<b>Totals</b>			11-32	4-12	0-0	9	13	22	5	3	26	4	12	5	1	5	1

Shooting By Period		
1st FG%	11-32	34.4%
3PT%	4-12	33.3%
FT%	0-0	0%
GM FG%	11-32	34.4%
3PT%	4-12	33.3%
FT%	0-0	0.0%

Dead Ball Rebounds: 1, 0

Technical Fouls::NONE

**LSU - 25**

NO.	Name	Min	FG			Rebounds			Fouls		TP	AS	TO	ST	Blocks		+/-
			M-A	M-A	M-A	OR	DR	TOT	PF	FD					BS	BA	
9	Jalen Reed	F 12:53	4-6	0-0	1-2	1	2	3	2	1	9	0	1	0	1	0	3
11	Corey Chest	F 16:34	0-1	0-0	3-4	2	2	4	1	3	3	0	2	1	3	0	0
1	Jordan Sears	G 15:22	3-8	3-7	0-0	0	3	3	0	1	9	1	1	0	0	1	2
4	Dji Bailey	G 17:46	1-1	0-0	0-0	0	1	1	0	0	2	3	2	3	1	0	-1
5	Cam Carter	G 15:42	0-3	0-3	0-0	0	0	0	0	0	0	1	0	0	0	0	-2
0	Vyctorius Miller	09:58	1-5	0-2	0-0	1	0	1	0	0	2	1	1	1	0	0	0
3	Curtis Givens III	04:38	0-1	0-1	0-0	0	0	0	0	0	0	0	0	0	0	0	-3
20	Derek Fountain	07:08	0-1	0-0	0-0	0	1	1	0	0	0	0	0	2	0	0	-4
Team						0	2	2			0		2				
<b>Totals</b>			9-26	3-13	4-6	4	11	15	3	5	25	6	9	7	5	1	-1

Shooting By Period		
1st FG%	9-26	34.6%
3PT%	3-13	23.1%
FT%	4-6	66.7%
GM FG%	9-26	34.6%
3PT%	3-13	23.1%
FT%	4-6	66.7%

Dead Ball Rebounds: 2, 0

Technical Fouls::NONE

	NSU	LSU
<b>Biggest lead</b>	6 (1 <sup>st</sup> 7:29)	3 (1 <sup>st</sup> 19:06)
<b>Best Scoring Run</b>	5(1 <sup>st</sup> 13:15)	6(1 <sup>st</sup> 5:53)
<b>Lead Changes</b>	1	
<b>Times Tied</b>	5	
<b>Time with Lead</b>	12:40	03:40

Points from	NSU	LSU
<b>Turnovers</b>	4	5
<b>Paint</b>	8	12
<b>Second Chance</b>	5	6
<b>Fast Breaks</b>	2	0
<b>Bench</b>	9	2

	Period by Period Scoring		
	1st	2nd	TOT
<b>NSU</b>	26	27	53
<b>LSU</b>	25	52	77



**Northwestern St. at LSU**

**Period 2**

**Quarter Starters:**

<b>LSU</b>	1 Sears J	4 Bailey D	5 Carter C	9 Reed J	11 Chest C
<b>NSU</b>	2 Colonel J	3 Jumawan L	9 Patterson A	10 Sanders J	23 Williams W

Game Time	LSU	Score	Diff	NSU
20:00				1 WARREN J substitution out
20:00				5 THOMAS M substitution out
20:00				7 BETTIS L substitution out
20:00				11 MUBIRU C substitution out
20:00				2 COLONEL J substitution in
20:00				3 JUMAWAN L substitution in
20:00				10 SANDERS J substitution in
20:00				23 WILLIAMS W substitution in
19:36				9 PATTERSON A 2pt FG outside the paint, jump shot missed
19:32	1 SEARS J defensive rebound (4)			
19:28	5 CARTER C 3pt FG fast break, jump shot made (3)	<b>28-26</b>	<b>2</b>	
19:28	11 CHEST C assist (1)			
19:10	5 CARTER C steal (1)			23 WILLIAMS W turnover bad pass (3)
19:07	11 CHEST C 2pt FG fast break from turnover in the paint, dunk, made (5)	<b>30-26</b>	<b>4</b>	
19:07	5 CARTER C assist (2)			
19:05				Timeout 30 Sec
18:43		<b>30-29</b>	<b>1</b>	10 SANDERS J 3pt FG , jump shot made (14)
18:31	5 CARTER C 3pt FG , jump shot blocked			
18:31				9 PATTERSON A block (1)
18:29	offensive rebound (17)			
18:19	5 CARTER C foul drawn (1)			3 JUMAWAN L foul personal (2 - 1)
18:11	1 SEARS J 3pt FG second chance, jump shot made (12)	<b>33-29</b>	<b>4</b>	
18:11	5 CARTER C assist (3)			
17:49	1 SEARS J foul personal (1 - 1)			10 SANDERS J foul drawn (1)
17:40				10 SANDERS J 2pt FG in the paint, jump shot missed
17:38	9 REED J defensive rebound (4)			
17:31	9 REED J 3pt FG , jump shot missed			
17:29				defensive dead ball rebound (2)
17:10				2 COLONEL J 2pt FG in the paint, jump shot missed
17:07	11 CHEST C defensive rebound (5)			
17:06	11 CHEST C turnover bad pass (3)			
16:55				10 SANDERS J 3pt FG from turnover, jump shot missed
16:53	5 CARTER C defensive rebound (1)			
16:46	5 CARTER C 2pt FG in the paint, layup missed			
16:45	9 REED J offensive rebound (5)			
16:45				3 JUMAWAN L substitution out
16:45				9 PATTERSON A substitution out
16:45				5 THOMAS M substitution in
16:45				11 MUBIRU C substitution in
16:43	5 CARTER C 3pt FG second chance, jump shot made (6)	<b>36-29</b>	<b>7</b>	
16:43	4 BAILEY D assist (4)			
16:25				10 SANDERS J turnover bad pass (1)





**Northwestern St. at LSU**

**Officials:** Bart Lenox, Jason Baker, Erroll Lewis

Game Time	LSU	Score	Diff	NSU
15:59	5 CARTER C 2pt FG from turnover outside the paint, jump shot missed			
15:54				10 SANDERS J defensive rebound (2)
15:33				23 WILLIAMS W 2pt FG in the paint, layup blocked
15:33	11 CHEST C block (4)			
15:30	11 CHEST C defensive rebound (6)			
15:23	4 BAILEY D 2pt FG in the paint, layup made (4)	<b>38-29</b>	<b>9</b>	
15:23	1 SEARS J assist (2)			
15:23	4 BAILEY D foul drawn (1)			10 SANDERS J foul shooting (2 - 2)
15:23	Timeout media			
15:23				23 WILLIAMS W substitution out
15:23				1 WARREN J substitution in
15:23	4 BAILEY D free throw 1 - 1 made (5)	<b>39-29</b>	<b>10</b>	
15:23	4 BAILEY D substitution out			
15:23	0 MILLER V substitution in			
15:12				5 THOMAS M 3pt FG , jump shot missed
15:05				2 COLONEL J offensive rebound (5)
15:05				2 COLONEL J 2pt FG second chance in the paint, tip-in layup missed
15:03				5 THOMAS M offensive rebound (1)
15:02				5 THOMAS M turnover lost ball (1)
14:48	5 CARTER C 2pt FG from turnover in the paint, layup missed			
14:44	11 CHEST C offensive rebound (7)			
14:44	11 CHEST C 2pt FG from turnover second chance in the paint, tip-in layup made (7)	<b>41-29</b>	<b>12</b>	
14:32	5 CARTER C steal (2)			10 SANDERS J turnover bad pass (2)
14:29	5 CARTER C 2pt FG fast break from turnover in the paint, layup made (8)	<b>43-29</b>	<b>14</b>	
14:27				Timeout 30 Sec
14:27				10 SANDERS J substitution out
14:27				7 BETTIS L substitution in
14:27	11 CHEST C substitution out			
14:27	4 BAILEY D substitution in			
14:25				7 BETTIS L turnover bad pass (2)
14:25				2 COLONEL J substitution out
14:25				9 PATTERSON A substitution in
14:21	9 REED J 2pt FG from turnover in the paint, layup missed			
14:20				9 PATTERSON A defensive rebound (7)
13:59				7 BETTIS L 2pt FG in the paint, layup blocked
13:59	1 SEARS J block (1)			
13:59				offensive rebound (27)
13:51				7 BETTIS L 2pt FG second chance outside the paint, jump shot missed
13:48	5 CARTER C defensive rebound (2)			
13:43	5 CARTER C 2pt FG fast break in the paint, layup made (10)	<b>45-29</b>	<b>16</b>	
13:29				5 THOMAS M 3pt FG , jump shot missed
13:24				offensive rebound (28)
13:24	1 SEARS J substitution out			
13:24	9 REED J substitution out			
13:24	3 GIVENS III C substitution in			
13:24	6 MILLER III R substitution in			



**Northwestern St. at LSU**

11/29/24 Maravich Assembly Center, Baton Rouge  
2024-25 Men's Basketball

**Game Time:** 7:00 PM  
**Game Duration:** 1:50  
**Attendance:** 8,042

**Officials:** Bart Lenox, Jason Baker, Erroll Lewis

Game Time	LSU	Score	Diff	NSU
13:08				9 PATTERSON A 2pt FG second chance in the paint, jump shot missed
13:05	4 BAILEY D defensive rebound (2)			
12:49	0 MILLER V 2pt FG in the paint, layup made (4)	<b>47-29</b>	<b>18</b>	
12:29				9 PATTERSON A 2pt FG in the paint, jump shot missed
12:25				11 MUBIRU C offensive rebound (2)
12:25		<b>47-31</b>	<b>16</b>	11 MUBIRU C 2pt FG second chance in the paint, tip-in layup made (2)
12:10	3 GIVENS III C 2pt FG in the paint, jump shot missed			
12:10				defensive dead ball rebound (3)
12:10				7 BETTIS L substitution out
12:10				10 SANDERS J substitution in
12:08				9 PATTERSON A turnover bad pass (7)
11:57	0 MILLER V foul drawn (1)			11 MUBIRU C foul shooting (2 - 3)
11:57	Timeout media			
11:57				5 THOMAS M substitution out
11:57				3 JUMAWAN L substitution in
11:57	0 MILLER V free throw 1 - 2 made (5)	<b>48-31</b>	<b>17</b>	
11:57	0 MILLER V free throw 2 - 2 made (6)	<b>49-31</b>	<b>18</b>	
11:43				10 SANDERS J 2pt FG in the paint, layup blocked
11:43	6 MILLER III R block (1)			
11:38				9 PATTERSON A offensive rebound (8)
11:38	4 BAILEY D foul shooting (1 - 2)			9 PATTERSON A foul drawn (1)
11:38		<b>49-32</b>	<b>17</b>	9 PATTERSON A free throw 1 - 2 made (3)
11:38				9 PATTERSON A free throw 2 - 2 missed
11:36	0 MILLER V defensive rebound (2)			
11:32	5 CARTER C 3pt FG fast break, jump shot made (13)	<b>52-32</b>	<b>20</b>	
11:32	3 GIVENS III C assist (1)			
11:04		<b>52-34</b>	<b>18</b>	1 WARREN J 2pt FG in the paint, jump shot made (4)
11:04				3 JUMAWAN L assist (1)
10:42	3 GIVENS III C 2pt FG in the paint, layup missed			
10:39	6 MILLER III R offensive rebound (1)			
10:39	6 MILLER III R 2pt FG second chance in the paint, tip-in layup made (2)	<b>54-34</b>	<b>20</b>	
10:28	6 MILLER III R steal (1)			10 SANDERS J turnover bad pass (3)
10:26	6 MILLER III R foul drawn (1)			1 WARREN J foul flagrant 1 (1 - 4)
10:26	6 MILLER III R free throw fast break 1 - 2 missed			
10:26	offensive dead ball rebound (3)			
10:26	6 MILLER III R free throw fast break 2 - 2 made (3)	<b>55-34</b>	<b>21</b>	
10:26	5 CARTER C substitution out			
10:26	6 MILLER III R substitution out			
10:26	9 REED J substitution in			
10:26	11 CHEST C substitution in			
10:26				1 WARREN J substitution out
10:26				9 PATTERSON A substitution out
10:26				2 COLONEL J substitution in
10:26				23 WILLIAMS W substitution in
10:10	0 MILLER V 3pt FG , jump shot missed			
10:07				23 WILLIAMS W defensive rebound (5)
09:45				2 COLONEL J 2pt FG in the paint, layup blocked



**Northwestern St. at LSU**

11/29/24 Maravich Assembly Center, Baton Rouge  
2024-25 Men's Basketball

**Game Time:** 7:00 PM  
**Game Duration:** 1:50  
**Attendance:** 8,042

**Officials:** Bart Lenox, Jason Baker, Erroll Lewis

Game Time	LSU	Score	Diff	NSU
09:45	11 CHEST C block (5)			
09:42				2 COLONEL J offensive rebound (6)
09:40				23 WILLIAMS W 2pt FG second chance in the paint, layup missed
09:39				offensive rebound (33)
09:37				2 COLONEL J 2pt FG second chance outside the paint, jump shot missed
09:34	4 BAILEY D defensive rebound (3)			
09:33	4 BAILEY D foul drawn (2)			3 JUMAWAN L foul personal (3 - 5)
09:21	11 CHEST C 2pt FG in the paint, dunk, made (9)	<b>57-34</b>	<b>23</b>	
09:21	9 REED J assist (1)			
09:03				10 SANDERS J 3pt FG , jump shot missed
09:01	11 CHEST C defensive rebound (8)			
08:55	0 MILLER V foul drawn (2)			10 SANDERS J foul personal (3 - 6)
08:55				10 SANDERS J substitution out
08:55				5 THOMAS M substitution in
08:47	3 GIVENS III C 3pt FG , jump shot made (3)	<b>60-34</b>	<b>26</b>	
08:47	0 MILLER V assist (2)			
08:30	4 BAILEY D foul personal (2 - 3)			11 MUBIRU C foul drawn (1)
08:23				3 JUMAWAN L 3pt FG , jump shot missed
08:21				2 COLONEL J offensive rebound (7)
08:07				5 THOMAS M 2pt FG second chance outside the paint, jump shot missed
08:03	11 CHEST C defensive rebound (9)			
07:58	Timeout media			
07:58	9 REED J substitution out			
07:58	6 MILLER III R substitution in			
07:58				11 MUBIRU C substitution out
07:58				7 BETTIS L substitution in
07:41	3 GIVENS III C turnover bad pass (1)			3 JUMAWAN L steal (2)
07:38	3 GIVENS III C foul shooting (1 - 4)			3 JUMAWAN L foul drawn (1)
07:38		<b>60-35</b>	<b>25</b>	3 JUMAWAN L free throw fast break 1 - 2 made (1)
07:38				3 JUMAWAN L free throw fast break 2 - 2 missed
07:36				23 WILLIAMS W offensive rebound (6)
07:27				2 COLONEL J 2pt FG second chance in the paint, dunk, missed
07:24				23 WILLIAMS W offensive rebound (7)
07:23		<b>60-38</b>	<b>22</b>	7 BETTIS L 3pt FG second chance, jump shot made (5)
07:23				23 WILLIAMS W assist (2)
07:03	3 GIVENS III C 3pt FG , jump shot missed			
07:00	0 MILLER V offensive rebound (3)			
07:00	0 MILLER V foul drawn (3)			5 THOMAS M foul personal (1 - 7)
07:00	3 GIVENS III C substitution out			
07:00	6 MILLER III R substitution out			
07:00	1 SEARS J substitution in			
07:00	9 REED J substitution in			
07:00	0 MILLER V 1&1 free throw 1 made (7)	<b>61-38</b>	<b>23</b>	
07:00	0 MILLER V 1&1 free throw 2 made (8)	<b>62-38</b>	<b>24</b>	
07:00	0 MILLER V substitution out			
07:00	5 CARTER C substitution in			
06:44	4 BAILEY D foul shooting (3 - 5)			23 WILLIAMS W foul drawn (3)



**Northwestern St. at LSU**

11/29/24 Maravich Assembly Center, Baton Rouge  
2024-25 Men's Basketball

**Game Time:** 7:00 PM  
**Game Duration:** 1:50  
**Attendance:** 8,042

**Officials:** Bart Lenox, Jason Baker, Erroll Lewis

Game Time	LSU	Score	Diff	NSU
06:44				23 WILLIAMS W free throw 1 - 2 missed
06:44				offensive dead ball rebound (4)
06:44				23 WILLIAMS W free throw 2 - 2 missed
06:42	4 BAILEY D defensive rebound (4)			
06:29	9 REED J 2pt FG in the paint, layup made (11)	<b>64-38</b>	<b>26</b>	
06:09		<b>64-41</b>	<b>23</b>	7 BETTIS L 3pt FG , jump shot made (8)
06:09				3 JUMAWAN L assist (2)
05:48	1 SEARS J 3pt FG , jump shot made (15)	<b>67-41</b>	<b>26</b>	
05:48	11 CHEST C assist (2)			
05:32				7 BETTIS L 3pt FG , jump shot missed
05:29	11 CHEST C defensive rebound (10)			
05:13	5 CARTER C 3pt FG , jump shot missed			
05:09	1 SEARS J offensive rebound (5)			
04:55	1 SEARS J 3pt FG second chance, jump shot made (18)	<b>70-41</b>	<b>29</b>	
04:32		<b>70-44</b>	<b>26</b>	5 THOMAS M 3pt FG , jump shot made (8)
04:32				7 BETTIS L assist (1)
04:01	4 BAILEY D turnover lost ball (3)			23 WILLIAMS W steal (1)
03:57		<b>70-46</b>	<b>24</b>	2 COLONEL J 2pt FG fast break from turnover in the paint, dunk, made (6)
03:57				5 THOMAS M assist (1)
03:44	1 SEARS J 2pt FG in the paint, layup missed			
03:41				5 THOMAS M defensive rebound (2)
03:36				5 THOMAS M 3pt FG , jump shot missed
03:35				23 WILLIAMS W offensive rebound (8)
03:33		<b>70-48</b>	<b>22</b>	23 WILLIAMS W 2pt FG second chance in the paint, layup made (2)
03:33	1 SEARS J foul shooting (2 - 6)			23 WILLIAMS W foul drawn (4)
03:33	Timeout media			
03:33	4 BAILEY D substitution out			
03:33	0 MILLER V substitution in			
03:33				3 JUMAWAN L substitution out
03:33				7 BETTIS L substitution out
03:33				9 PATTERSON A substitution in
03:33				10 SANDERS J substitution in
03:33				23 WILLIAMS W free throw 1 - 1 missed
03:33	0 MILLER V defensive rebound (4)			
03:14	5 CARTER C foul drawn (2)			9 PATTERSON A foul shooting (1 - 8)
03:14	5 CARTER C free throw 1 - 2 made (14)	<b>71-48</b>	<b>23</b>	
03:14				23 WILLIAMS W substitution out
03:14				1 WARREN J substitution in
03:14	5 CARTER C free throw 2 - 2 made (15)	<b>72-48</b>	<b>24</b>	
03:04	5 CARTER C foul shooting (1 - 7)			9 PATTERSON A foul drawn (2)
03:04				9 PATTERSON A free throw 1 - 2 missed
03:04				offensive dead ball rebound (5)
03:04		<b>72-49</b>	<b>23</b>	9 PATTERSON A free throw 2 - 2 made (4)
02:51	1 SEARS J 2pt FG in the paint, jump shot blocked			
02:51				2 COLONEL J block (2)
02:48				2 COLONEL J defensive rebound (8)
02:33				1 WARREN J 3pt FG , jump shot missed
02:29	0 MILLER V defensive rebound (5)			



**Northwestern St. at LSU**

11/29/24 Maravich Assembly Center, Baton Rouge  
2024-25 Men's Basketball

**Game Time:** 7:00 PM  
**Game Duration:** 1:50  
**Attendance:** 8,042

**Officials:** Bart Lenox, Jason Baker, Erroll Lewis

Game Time	LSU	Score	Diff	NSU
02:23	1 SEARS J 3pt FG , jump shot missed			
02:20				9 PATTERSON A defensive rebound (9)
02:11	1 SEARS J foul personal (3 - 8)			2 COLONEL J foul drawn (2)
02:11	1 SEARS J substitution out			
02:11	5 CARTER C substitution out			
02:11	9 REED J substitution out			
02:11	11 CHEST C substitution out			
02:11	2 WILLIAMS III M substitution in			
02:11	3 GIVENS III C substitution in			
02:11	6 MILLER III R substitution in			
02:11	20 FOUNTAIN D substitution in			
02:11				1 WARREN J substitution out
02:11				9 PATTERSON A substitution out
02:11				10 SANDERS J substitution out
02:11				7 BETTIS L substitution in
02:11				11 MUBIRU C substitution in
02:11				23 WILLIAMS W substitution in
02:10				2 COLONEL J 1&1 free throw 1 missed
02:10	6 MILLER III R defensive rebound (2)			
01:59	0 MILLER V foul drawn (4)			2 COLONEL J foul shooting (3 - 9)
01:59	0 MILLER V free throw 1 - 3 made (9)	<b>73-49</b>	<b>24</b>	
01:59	0 MILLER V free throw 2 - 3 made (10)	<b>74-49</b>	<b>25</b>	
01:59				2 COLONEL J substitution out
01:59				21 RILEY J substitution in
01:59	0 MILLER V free throw 3 - 3 made (11)	<b>75-49</b>	<b>26</b>	
01:45		<b>75-51</b>	<b>24</b>	21 RILEY J 2pt FG in the paint, layup made (2)
01:45				5 THOMAS M assist (2)
01:31	3 GIVENS III C 2pt FG in the paint, layup made (5)	<b>77-51</b>	<b>26</b>	
01:10				7 BETTIS L 3pt FG , jump shot missed
01:06	20 FOUNTAIN D defensive rebound (2)			
01:06	Timeout 30 Sec			
01:06	0 MILLER V substitution out			
01:06	6 MILLER III R substitution out			
01:06	14 YOUNG T substitution in			
01:06	25 BENHAYOUNE A substitution in			
01:06				5 THOMAS M substitution out
01:06				4 WILLIAMS M substitution in
00:55	20 FOUNTAIN D turnover lost ball (1)			
00:40				11 MUBIRU C 3pt FG from turnover, jump shot missed
00:38	defensive dead ball rebound (4)			
00:28	25 BENHAYOUNE A 3pt FG , jump shot missed			
00:22	14 YOUNG T offensive rebound (1)			
00:20	14 YOUNG T turnover lost ball (1)			7 BETTIS L steal (2)
00:13		<b>77-53</b>	<b>24</b>	21 RILEY J 2pt FG fast break from turnover in the paint, layup made (4)
00:13				7 BETTIS L assist (2)
<b>END OF GAME</b>				
<b>LSU 77-53 NSU</b>				



Officials: Bart Lenox, Jason Baker, Erroll Lewis

Northwestern St. - 27

NO.	Name	Min	FG			Rebounds			Fouls		TP	AS	TO	ST	Blocks		+/-
			M-A	M-A	M-A	OR	DR	TOT	PF	FD					BS	BA	
2	Jerald Colonel	F 14:02	1-6	0-0	0-1	3	1	4	1	1	2	0	0	0	1	1	-19
23	Willie Williams	F 14:00	1-3	0-0	0-3	3	1	4	0	2	2	1	1	1	0	1	-13
3	Landyn Jumawan	G 11:39	0-1	0-1	1-2	0	0	0	2	1	1	2	0	1	0	0	-11
9	Addison Patterson	G 08:36	0-3	0-0	2-4	1	2	3	1	2	2	0	1	0	1	0	-13
10	Jon Sanders	G 10:10	1-5	1-3	0-0	0	1	1	2	1	3	0	3	0	0	1	-23
5	Micah Thomas	12:37	1-5	1-4	0-0	1	1	2	1	0	3	2	1	0	0	0	-15
11	Chris Mubiru	10:58	1-2	0-1	0-0	1	0	1	1	1	2	0	0	0	0	0	-23
1	JT Warren	06:00	1-2	0-1	0-0	0	0	0	1	0	2	0	0	0	0	0	-12
7	Love Bettis	08:53	2-6	2-4	0-0	0	0	0	0	0	6	2	1	1	0	1	1
21	J.C. Riley	01:59	2-2	0-0	0-0	0	0	0	0	0	4	0	0	0	0	0	1
4	Mitch Williams	01:06	0-0	0-0	0-0	0	0	0	0	0	0	0	0	0	0	0	2
Team						3	0	3			0		0				
<b>Totals</b>			10-35	4-14	3-10	12	6	18	9	8	27	7	7	3	2	4	-25

Shooting By Period		
2 <sup>nd</sup> FG%	10-35	28.6%
3PT%	4-14	28.6%
FT%	3-10	30%
GM FG%	10-35	28.6%
3PT%	4-14	28.6%
FT%	3-10	30.0%

Dead Ball Rebounds: 2, 2

Technical Fouls::NONE

LSU - 52

NO.	Name	Min	FG			Rebounds			Fouls		TP	AS	TO	ST	Blocks		+/-
			M-A	M-A	M-A	OR	DR	TOT	PF	FD					BS	BA	
9	Jalen Reed	F 13:53	1-3	0-1	0-0	1	1	2	0	0	2	1	0	0	0	0	23
11	Corey Chest	F 13:48	3-3	0-0	0-0	1	5	6	0	0	6	2	1	0	2	0	17
1	Jordan Sears	G 11:25	3-6	3-4	0-0	1	1	2	3	0	9	1	0	0	1	1	18
4	Dji Bailey	G 15:31	1-1	0-0	1-1	0	3	3	3	2	3	1	1	0	0	0	19
5	Cam Carter	G 14:23	5-10	3-5	2-2	0	2	2	1	2	15	2	0	2	0	1	21
0	Vyctorius Miller	10:50	1-2	0-1	7-7	1	3	4	0	4	9	1	0	0	0	0	18
3	Curtis Givens III	08:35	2-5	1-2	0-0	0	0	0	1	0	5	1	1	0	0	0	7
6	Robert Miller III	05:01	1-1	0-0	1-2	1	1	2	0	1	3	0	0	1	1	0	4
2	Mike Williams III	02:11	0-0	0-0	0-0	0	0	0	0	0	0	0	0	0	0	0	1
20	Derek Fountain	02:11	0-0	0-0	0-0	0	1	1	0	0	0	0	1	0	0	0	1
14	Trace Young	01:06	0-0	0-0	0-0	1	0	1	0	0	0	0	1	0	0	0	-2
25	Adam Benhayoune	01:06	0-1	0-1	0-0	0	0	0	0	0	0	0	0	0	0	0	-2
Team						1	0	1			0		0				
<b>Totals</b>			17-32	7-14	11-12	7	17	24	8	9	52	9	5	3	4	2	25

Shooting By Period		
2 <sup>nd</sup> FG%	17-32	53.1%
3PT%	7-14	50.0%
FT%	11-12	91.7%
GM FG%	17-32	53.1%
3PT%	7-14	50.0%
FT%	11-12	91.7%

Dead Ball Rebounds: 1, 1

Technical Fouls::NONE

	NSU	LSU
Biggest lead	1 (2 <sup>nd</sup> 19:36)	29 (2 <sup>nd</sup> 4:55)
Best Scoring Run	7(2 <sup>nd</sup> 3:33)	17(2 <sup>nd</sup> 12:49)
Lead Changes	1	
Times Tied	0	
Time with Lead	00:08	19:28

Points from	NSU	LSU
Turnovers	5	9
Paint	12	20
Second Chance	8	15
Fast Breaks	5	13
Bench	17	17

	Period by Period Scoring		
	1st	2nd	TOT
NSU	26	27	53
LSU	25	52	77

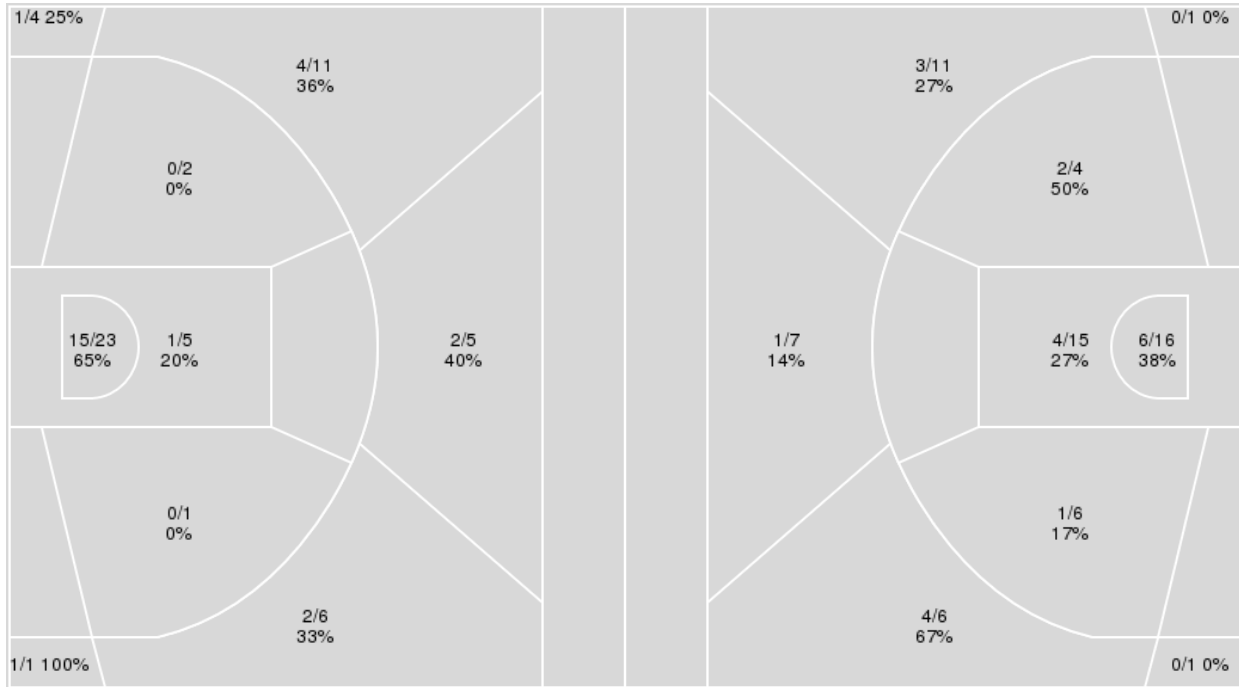


**Officials:** Bart Lenox, Jason Baker, Erroll Lewis

{ Players => 0, 1, 2, 3, 4, 5, 6, 7, 8, 9, 10, 11, 14, 15, 20, 25; } FG Types { Players => All; } FG Types => All; Results => All;  
 => All; Results => All;

**LSU**

**Northwestern St.**



LSU	M/A	%
Field Goals	26/58	45
2 Points	16/31	52
3 Points	10/27	37
Free Throws	15/18	83

Northwestern St.	M/A	%
Field Goals	21/67	31
2 Points	13/41	32
3 Points	8/26	31
Free Throws	3/10	30



**Northwestern St. at LSU**

11/29/24 Maravich Assembly Center, Baton Rouge  
2024-25 Men's Basketball

**Game Time:** 7:00 PM  
**Game Duration:** 1:50  
**Attendance:** 8,042

**Officials:** Bart Lenox, Jason Baker, Erroll Lewis

**Northwestern St.**

No	Name	Mins		Score		Points Diff		Points per Min		Assists		Rebounds		Steals		Turnovers	
		On	Off	On	Off	On	Off	On	Off	On	Off	On	Off	On	Off	On	Off
1	JT Warren	15:15	24:45	17 - 26	36 - 51	-9	-15	1.11	1.45	1	10	18	22	3	5	10	9
2	Jerald Colonel	24:47	15:13	33 - 54	20 - 23	-21	-3	1.33	1.31	8	3	26	14	4	4	12	7
3	Landyn Jumawan	22:11	17:49	35 - 44	18 - 33	-9	-15	1.58	1.01	9	2	23	17	4	4	9	10
4	Mitch Williams	01:06	38:54	2 - 0	51 - 77	2	-26	1.82	1.31	1	10	0	40	1	7	0	19
5	Micah Thomas	22:05	17:55	30 - 46	23 - 31	-16	-8	1.36	1.28	5	6	22	18	5	3	10	9
7	Love Bettis	14:40	25:20	27 - 25	26 - 52	2	-26	1.84	1.03	6	5	13	27	4	4	4	15
9	Addison Patterson	25:51	14:09	33 - 45	20 - 32	-12	-12	1.28	1.41	5	6	26	14	5	3	13	6
10	Jon Sanders	24:23	15:37	26 - 49	27 - 28	-23	-1	1.07	1.73	5	6	26	14	4	4	15	4
11	Chris Mubiru	14:23	25:38	11 - 36	42 - 41	-25	1	0.77	1.64	3	8	16	24	1	7	8	11
21	J.C. Riley	06:37	33:23	11 - 7	42 - 70	4	-28	1.66	1.26	2	9	4	36	2	6	3	16
23	Willie Williams	28:43	11:18	40 - 53	13 - 24	-13	-11	1.39	1.15	10	1	26	14	7	1	11	8

**LSU**

No	Name	Mins		Score		Points Diff		Points per Min		Assists		Rebounds		Steals		Turnovers	
		On	Off	On	Off	On	Off	On	Off	On	Off	On	Off	On	Off	On	Off
0	Vyctorius Miller	20:48	19:12	46 - 28	31 - 25	18	6	2.21	1.61	7	8	17	22	7	3	6	8
1	Jordan Sears	26:47	13:13	53 - 33	24 - 20	20	4	1.98	1.82	12	3	27	12	7	3	8	6
2	Mike Williams III	02:11	37:49	5 - 4	72 - 49	1	23	2.29	1.90	0	15	3	36	0	10	2	12
3	Curtis Givens III	13:13	26:47	24 - 20	53 - 33	4	20	1.82	1.98	3	12	12	27	3	7	6	8
4	Dji Bailey	33:17	06:43	64 - 46	13 - 7	18	6	1.92	1.94	15	0	32	7	8	2	12	2
5	Cam Carter	30:05	09:55	57 - 38	20 - 15	19	5	1.89	2.02	11	4	30	9	8	2	7	7
6	Robert Miller III	05:01	34:59	15 - 11	62 - 42	4	20	2.99	1.77	1	14	6	33	1	9	1	13
9	Jalen Reed	26:46	13:15	57 - 31	20 - 22	26	-2	2.13	1.51	14	1	26	13	7	3	6	8
11	Corey Chest	30:22	09:38	54 - 37	23 - 16	17	7	1.78	2.39	12	3	31	8	7	3	11	3
14	Trace Young	01:06	38:54	0 - 2	77 - 51	-2	26	0.00	1.98	0	15	1	38	0	10	2	12
20	Derek Fountain	09:19	30:42	10 - 13	67 - 40	-3	27	1.07	2.18	0	15	9	30	2	8	7	7
25	Adam Benhayoune	01:06	38:54	0 - 2	77 - 51	-2	26	0.00	1.98	0	15	1	38	0	10	2	12

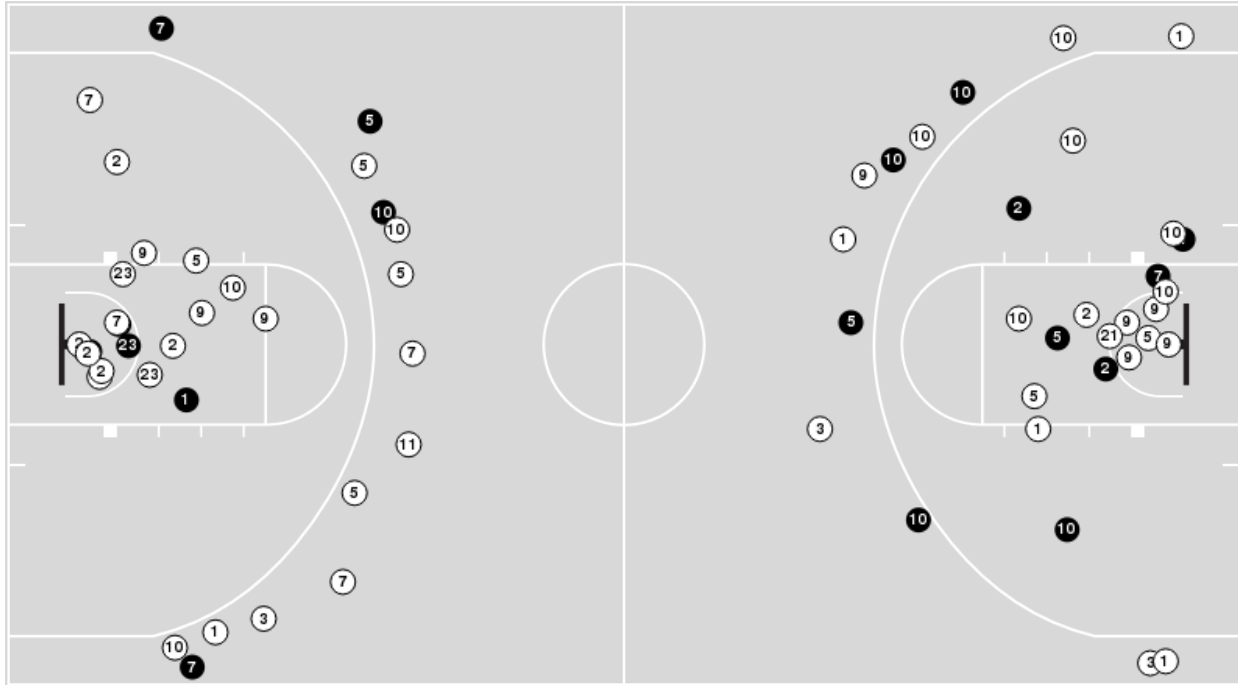




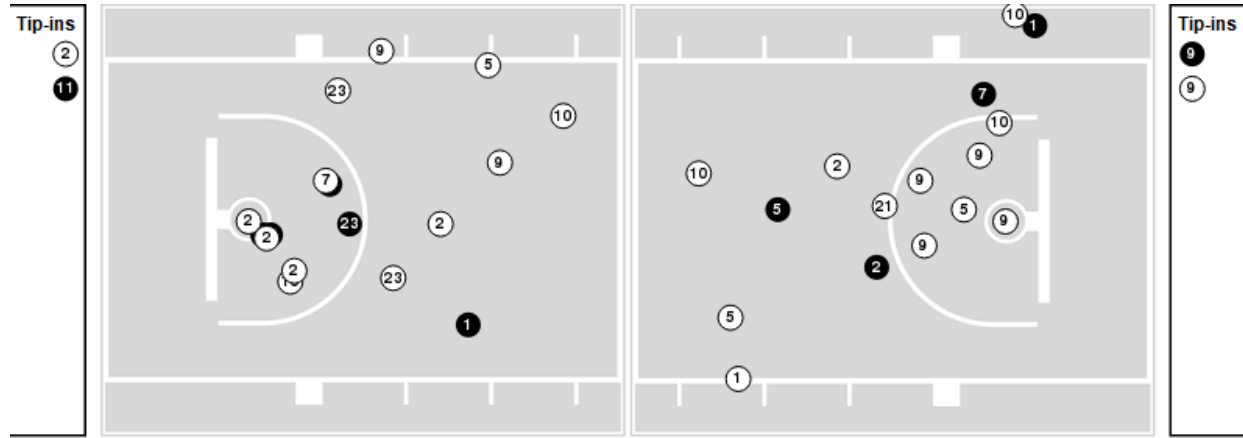
**Officials:** Bart Lenox, Jason Baker, Erroll Lewis

Players => AllFG Types=>AllResults=>All  
**Northwestern St.**

**All Field Goals**



**Blow Up Chart**



● Made    ○ Missed    N - Player Number

Northwestern St.	M/A	%
Field Goals	21/67	31
2 Points	13/41	32
3 Points	8/26	31
Free Throws	3/10	30

Northwestern St.	M/A	%
Points in the Paint	20 (10 / 31)	32
Fast Break Points	7 (4/5)	80
Second Chance Points	13 (6/20)	30
Effective FG%	37	

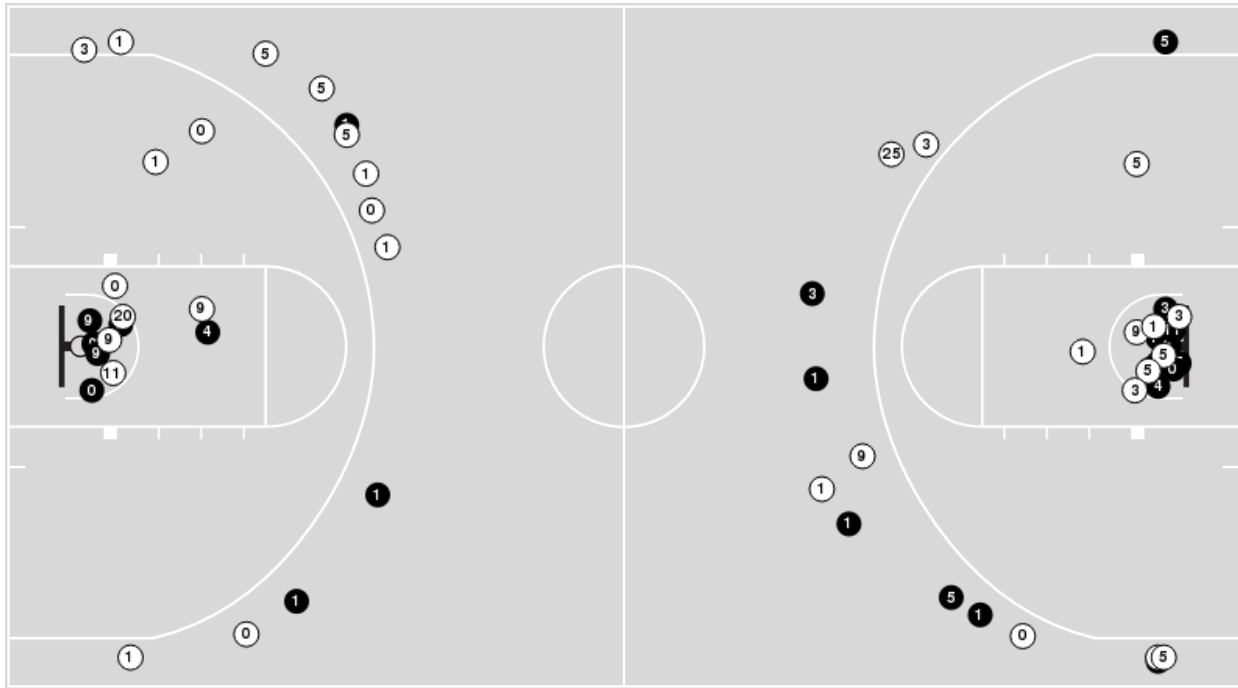


**Officials:** Bart Lenox, Jason Baker, Erroll Lewis

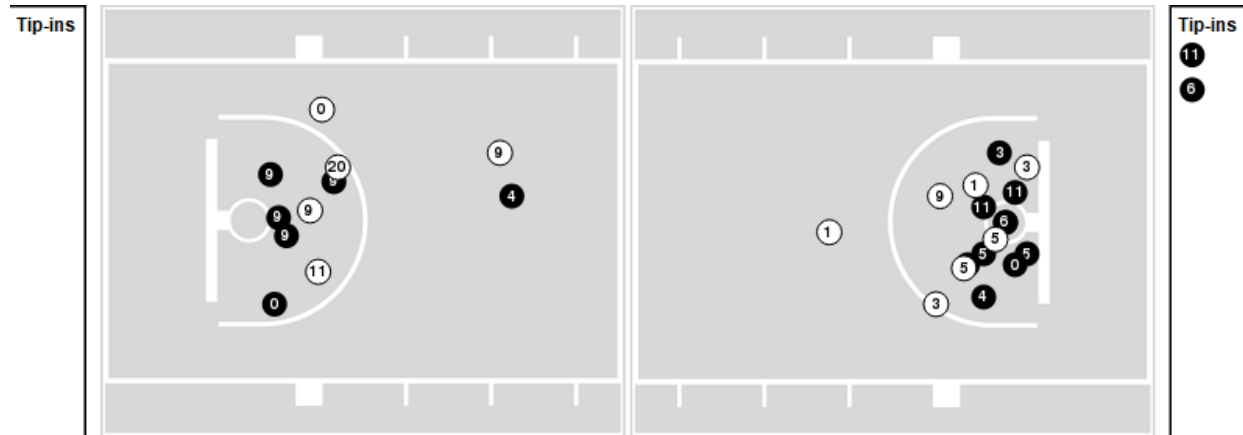
Players => 0, 1, 2, 3, 4, 5, 6, 7, 8, 9, 10, 11, 14, 15, 20, 25FG Types=>AllResults=>All

**LSU**

**All Field Goals**



**Blow Up Chart**



● Made    ○ Missed    N - Player Number

LSU	M/A	%
Field Goals	26/58	45
2 Points	16/31	52
3 Points	10/27	37
Free Throws	15/18	83

LSU	M/A	%
Points in the Paint	32 (16 / 28)	57
Fast Break Points	13 (6/7)	86
Second Chance Points	21 (10/12)	83
Effective FG%	53	



**Officials:** Bart Lenox, Jason Baker, Erroll Lewis

**Northwestern St.**

Lineup	Quarter On	Time On	Quarter Off	Time Off	Time on Court	Score	Score Diff	Reb	Stl	Tov	Ass	PPP
2- Colonel J/ 3- Jumawan L/ 9- Patterson A/ 10- Sanders J/ 23- Williams W/	1	20:00	1	12:24	07:36	10-9	1	12	1	6	3	0.8333
1- Warren J/ 5- Thomas M/ 7- Bettis L/ 11- Mubiru C/ 21- Riley J/	1	12:24	1	09:39	02:45	2-2	0	3	0	2	0	0.5000
1- Warren J/ 5- Thomas M/ 7- Bettis L/ 9- Patterson A/ 21- Riley J/	1	09:39	1	07:46	01:53	5-2	3	1	1	1	0	1.2500
2- Colonel J/ 5- Thomas M/ 9- Patterson A/ 10- Sanders J/ 23- Williams W/	1	07:46	1	05:52	01:54	2-6	-4	1	1	1	0	0.6667
2- Colonel J/ 3- Jumawan L/ 9- Patterson A/ 10- Sanders J/ 23- Williams W/	1	05:52	1	04:37	01:15	3-2	1	0	0	0	1	1.5000
1- Warren J/ 3- Jumawan L/ 9- Patterson A/ 10- Sanders J/ 23- Williams W/	1	04:37	1	02:56	01:41	2-2	0	2	1	1	0	0.4000
1- Warren J/ 5- Thomas M/ 9- Patterson A/ 10- Sanders J/ 23- Williams W/	1	02:56	1	01:09	01:47	2-0	2	2	1	1	0	0.6667
1- Warren J/ 5- Thomas M/ 7- Bettis L/ 9- Patterson A/ 23- Williams W/	1	01:09	1	00:39	00:29	0-0	0	0	0	0	0	0.0000
1- Warren J/ 5- Thomas M/ 7- Bettis L/ 9- Patterson A/ 11- Mubiru C/	1	00:39	2	20:00	00:39	0-2	-2	1	0	0	0	0.0000
2- Colonel J/ 3- Jumawan L/ 9- Patterson A/ 10- Sanders J/ 23- Williams W/	2	20:00	2	16:45	03:15	3-8	-5	0	0	1	0	0.5000
2- Colonel J/ 5- Thomas M/ 10- Sanders J/ 11- Mubiru C/ 23- Williams W/	2	16:45	2	15:23	01:22	0-5	-5	1	0	1	0	0.0000
1- Warren J/ 2- Colonel J/ 5- Thomas M/ 10- Sanders J/ 11- Mubiru C/	2	15:23	2	14:27	00:56	0-5	-5	2	0	2	0	0.0000
1- Warren J/ 2- Colonel J/ 5- Thomas M/ 7- Bettis L/ 11- Mubiru C/	2	14:27	2	14:25	00:02	0-0	0	0	0	1	0	0.0000
1- Warren J/ 5- Thomas M/ 7- Bettis L/ 9- Patterson A/ 11- Mubiru C/	2	14:25	2	12:10	02:15	2-4	-2	4	0	0	0	0.6667
1- Warren J/ 5- Thomas M/ 9- Patterson A/ 10- Sanders J/ 11- Mubiru C/	2	12:10	2	11:57	00:13	0-0	0	0	0	1	0	0.0000
1- Warren J/ 3- Jumawan L/ 9- Patterson A/ 10- Sanders J/ 11- Mubiru C/	2	11:57	2	10:26	01:31	3-8	-5	1	0	1	1	1.0417
2- Colonel J/ 3- Jumawan L/ 10- Sanders J/ 11- Mubiru C/ 23- Williams W/	2	10:26	2	08:55	01:31	0-2	-2	3	0	0	0	0.0000
2- Colonel J/ 3- Jumawan L/ 5- Thomas M/ 11- Mubiru C/ 23- Williams W/	2	08:55	2	07:58	00:57	0-3	-3	1	0	0	0	0.0000
2- Colonel J/ 3- Jumawan L/ 5- Thomas M/ 7- Bettis L/ 23- Williams W/	2	07:58	2	03:33	04:25	14-10	4	4	2	0	4	2.0710
2- Colonel J/ 5- Thomas M/ 9- Patterson A/ 10- Sanders J/ 23- Williams W/	2	03:33	2	03:14	00:19	0-1	-1	0	0	0	0	0.0000
1- Warren J/ 2- Colonel J/ 5- Thomas M/ 9- Patterson A/ 10- Sanders J/	2	03:14	2	02:11	01:03	1-1	0	2	0	0	0	0.5319
2- Colonel J/ 5- Thomas M/ 7- Bettis L/ 11- Mubiru C/ 23- Williams W/	2	02:11	2	01:59	00:12	0-2	-2	0	0	0	0	0.0000
5- Thomas M/ 7- Bettis L/ 11- Mubiru C/ 21- Riley J/ 23- Williams W/	2	01:59	2	01:06	00:53	2-3	-1	0	0	0	1	1.0000
4- Williams M/ 7- Bettis L/ 11- Mubiru C/ 21- Riley J/ 23- Williams W/	2	01:06	2	00:00	01:06	2-0	2	0	1	0	1	1.0000



**Officials:** Bart Lenox, Jason Baker, Erroll Lewis

**LSU**

Lineup	Quarter On	Time On	Quarter Off	Time Off	Time on Court	Score	Score Diff	Reb	Stl	Tov	Ass	PPP
1- Sears J/ 4- Bailey D/ 5- Carter C/ 9- Reed J/ 11- Chest C/	1	20:00	1	15:50	04:10	3-3	0	3	2	0	1	0.6000
0- Miller V/ 1- Sears J/ 4- Bailey D/ 5- Carter C/ 9- Reed J/	1	15:50	1	12:24	03:26	6-7	-1	1	2	1	2	1.0000
0- Miller V/ 3- Givens III C/ 5- Carter C/ 11- Chest C/ 20- Fountain D/	1	12:24	1	10:10	02:14	2-2	0	1	1	0	0	0.6667
0- Miller V/ 3- Givens III C/ 4- Bailey D/ 11- Chest C/ 20- Fountain D/	1	10:10	1	07:46	02:24	2-5	-3	1	1	3	0	0.4000
0- Miller V/ 1- Sears J/ 4- Bailey D/ 9- Reed J/ 11- Chest C/	1	07:46	1	05:52	01:54	6-2	4	1	1	1	2	2.0000
1- Sears J/ 4- Bailey D/ 5- Carter C/ 9- Reed J/ 11- Chest C/	1	05:52	1	04:37	01:15	2-3	-1	2	0	0	0	1.5152
1- Sears J/ 4- Bailey D/ 5- Carter C/ 11- Chest C/ 20- Fountain D/	1	04:37	1	02:58	01:39	1-2	-1	3	0	2	0	0.2252
1- Sears J/ 4- Bailey D/ 5- Carter C/ 9- Reed J/ 11- Chest C/	1	02:58	1	02:55	00:03	1-0	1	0	0	0	0	1.1364
1- Sears J/ 4- Bailey D/ 5- Carter C/ 11- Chest C/ 20- Fountain D/	1	02:55	1	02:34	00:21	0-0	0	0	0	0	0	0.0000
1- Sears J/ 4- Bailey D/ 5- Carter C/ 9- Reed J/ 11- Chest C/	1	02:34	1	01:09	01:25	0-2	-2	1	0	2	0	0.0000
1- Sears J/ 4- Bailey D/ 5- Carter C/ 11- Chest C/ 20- Fountain D/	1	01:09	1	00:39	00:29	0-0	0	1	0	0	0	0.0000
1- Sears J/ 4- Bailey D/ 5- Carter C/ 9- Reed J/ 11- Chest C/	1	00:39	2	15:23	05:16	16-3	13	8	1	1	6	1.6949
0- Miller V/ 1- Sears J/ 5- Carter C/ 9- Reed J/ 11- Chest C/	2	15:23	2	14:27	00:56	4-0	4	1	1	0	0	2.0000
0- Miller V/ 1- Sears J/ 4- Bailey D/ 5- Carter C/ 9- Reed J/	2	14:27	2	13:24	01:03	2-0	2	1	0	0	0	1.0000
0- Miller V/ 3- Givens III C/ 4- Bailey D/ 5- Carter C/ 6- Miller III R/	2	13:24	2	10:26	02:58	10-5	5	3	1	0	1	1.7361
0- Miller V/ 3- Givens III C/ 4- Bailey D/ 9- Reed J/ 11- Chest C/	2	10:26	2	07:58	02:28	5-0	5	3	0	0	2	1.6667
0- Miller V/ 3- Givens III C/ 4- Bailey D/ 6- Miller III R/ 11- Chest C/	2	07:58	2	07:00	00:58	0-4	-4	1	0	1	0	0.0000
0- Miller V/ 1- Sears J/ 4- Bailey D/ 9- Reed J/ 11- Chest C/	2	07:00	2	07:00	00:00	2-0	2	0	0	0	0	2.2727
1- Sears J/ 4- Bailey D/ 5- Carter C/ 9- Reed J/ 11- Chest C/	2	07:00	2	03:33	03:27	8-10	-2	3	0	1	1	1.6000
0- Miller V/ 1- Sears J/ 5- Carter C/ 9- Reed J/ 11- Chest C/	2	03:33	2	02:11	01:22	2-1	1	2	0	0	0	0.6944
0- Miller V/ 2- Williams III M/ 3- Givens III C/ 6- Miller III R/ 20- Fountain D/	2	02:11	2	01:06	01:05	5-2	3	2	0	0	0	2.1552
2- Williams III M/ 3- Givens III C/ 14- Young T/ 20- Fountain D/ 25- Benhayoune A/	2	01:06	2	00:00	01:06	0-2	-2	1	0	2	0	0.0000



**Officials:** Bart Lenox, Jason Baker, Erroll Lewis

**Northwestern St.**

Lineup	Time	Score	Score Diff	Pts/Min	Reb	Stl	Tov	Ass	PPP
2- Colonel J/ 3- Jumawan L/ 9- Patterson A/ 10- Sanders J/ 23- Williams W/	12:06	16-19	-3	1.3223	12	1	7	4	0.8000
2- Colonel J/ 3- Jumawan L/ 5- Thomas M/ 7- Bettis L/ 23- Williams W/	04:25	14-10	4	3.1698	4	2	0	4	2.0710
1- Warren J/ 5- Thomas M/ 7- Bettis L/ 9- Patterson A/ 11- Mubiru C/	02:54	2-6	-4	0.6877	5	0	0	0	0.5000
1- Warren J/ 5- Thomas M/ 7- Bettis L/ 11- Mubiru C/ 21- Riley J/	02:45	2-2	0	0.7273	3	0	2	0	0.5000
2- Colonel J/ 5- Thomas M/ 9- Patterson A/ 10- Sanders J/ 23- Williams W/	02:13	2-7	-5	0.9023	1	1	1	0	0.5814
1- Warren J/ 5- Thomas M/ 7- Bettis L/ 9- Patterson A/ 21- Riley J/	01:53	5-2	3	2.6549	1	1	1	0	1.2500
1- Warren J/ 5- Thomas M/ 9- Patterson A/ 10- Sanders J/ 23- Williams W/	01:47	2-0	2	1.1215	2	1	1	0	0.6667
1- Warren J/ 3- Jumawan L/ 9- Patterson A/ 10- Sanders J/ 23- Williams W/	01:41	2-2	0	1.1881	2	1	1	0	0.4000
1- Warren J/ 3- Jumawan L/ 9- Patterson A/ 10- Sanders J/ 11- Mubiru C/	01:31	3-8	-5	1.9780	1	0	1	1	1.0417
2- Colonel J/ 3- Jumawan L/ 10- Sanders J/ 11- Mubiru C/ 23- Williams W/	01:31	0-2	-2	0.0000	3	0	0	0	0.0000
2- Colonel J/ 5- Thomas M/ 10- Sanders J/ 11- Mubiru C/ 23- Williams W/	01:22	0-5	-5	0.0000	1	0	1	0	0.0000
4- Williams M/ 7- Bettis L/ 11- Mubiru C/ 21- Riley J/ 23- Williams W/	01:06	2-0	2	1.8182	0	1	0	1	1.0000
1- Warren J/ 2- Colonel J/ 5- Thomas M/ 9- Patterson A/ 10- Sanders J/	01:03	1-1	0	0.9524	2	0	0	0	0.5319
2- Colonel J/ 3- Jumawan L/ 5- Thomas M/ 11- Mubiru C/ 23- Williams W/	00:57	0-3	-3	0.0000	1	0	0	0	0.0000
1- Warren J/ 2- Colonel J/ 5- Thomas M/ 10- Sanders J/ 11- Mubiru C/	00:56	0-5	-5	0.0000	2	0	2	0	0.0000
5- Thomas M/ 7- Bettis L/ 11- Mubiru C/ 21- Riley J/ 23- Williams W/	00:53	2-3	-1	2.2642	0	0	0	1	1.0000
1- Warren J/ 5- Thomas M/ 7- Bettis L/ 9- Patterson A/ 23- Williams W/	00:29	0-0	0	0.0000	0	0	0	0	0.0000
1- Warren J/ 5- Thomas M/ 9- Patterson A/ 10- Sanders J/ 11- Mubiru C/	00:13	0-0	0	0.0000	0	0	1	0	0.0000
2- Colonel J/ 5- Thomas M/ 7- Bettis L/ 11- Mubiru C/ 23- Williams W/	00:12	0-2	-2	0.0000	0	0	0	0	0.0000
1- Warren J/ 2- Colonel J/ 5- Thomas M/ 7- Bettis L/ 11- Mubiru C/	00:02	0-0	0	0.0000	0	0	1	0	0.0000



**Officials:** Bart Lenox, Jason Baker, Erroll Lewis

**LSU**

Lineup	Time	Score	Score Diff	Pts/Min	Reb	Stl	Tov	Ass	PPP
1- Sears J/ 4- Bailey D/ 5- Carter C/ 9- Reed J/ 11- Chest C/	15:36	30-21	9	1.9221	17	3	4	8	1.1700
0- Miller V/ 1- Sears J/ 4- Bailey D/ 5- Carter C/ 9- Reed J/	04:29	8-7	1	1.7844	2	2	1	2	1.0000
0- Miller V/ 3- Givens III C/ 4- Bailey D/ 5- Carter C/ 6- Miller III R/	02:58	10-5	5	3.3708	3	1	0	1	1.7361
1- Sears J/ 4- Bailey D/ 5- Carter C/ 11- Chest C/ 20- Fountain D/	02:29	1-2	-1	0.4013	4	0	2	0	0.2252
0- Miller V/ 3- Givens III C/ 4- Bailey D/ 9- Reed J/ 11- Chest C/	02:28	5-0	5	2.0270	3	0	0	2	1.6667
0- Miller V/ 3- Givens III C/ 4- Bailey D/ 11- Chest C/ 20- Fountain D/	02:24	2-5	-3	0.8333	1	1	3	0	0.4000
0- Miller V/ 1- Sears J/ 5- Carter C/ 9- Reed J/ 11- Chest C/	02:18	6-1	5	2.6087	3	1	0	0	1.2295
0- Miller V/ 3- Givens III C/ 5- Carter C/ 11- Chest C/ 20- Fountain D/	02:14	2-2	0	0.8955	1	1	0	0	0.6667
0- Miller V/ 1- Sears J/ 4- Bailey D/ 9- Reed J/ 11- Chest C/	01:54	8-2	6	4.2105	1	1	1	2	2.0619
2- Williams III M/ 3- Givens III C/ 14- Young T/ 20- Fountain D/ 25- Benhayoune A/	01:06	0-2	-2	0.0000	1	0	2	0	0.0000
0- Miller V/ 2- Williams III M/ 3- Givens III C/ 6- Miller III R/ 20- Fountain D/	01:05	5-2	3	4.6154	2	0	0	0	2.1552
0- Miller V/ 3- Givens III C/ 4- Bailey D/ 6- Miller III R/ 11- Chest C/	00:58	0-4	-4	0.0000	1	0	1	0	0.0000