



LSU at Alabama

01/27/24 Coleman Coliseum, Tuscaloosa
2023-24 Men's Basketball

Game Time: 7:00 PM
Game Duration: 2:13
Attendance: 13,474

Officials: Doug Shows, Owen Shortt, Bharat Ramnanan

LSU - 88 Record: 11-9 (3-4)

| NO. | Name | F/C | Min | FG | | 3P | | FT | | Rebounds | | | Fouls | | TP | AS | TO | ST | Blocks | | +/- |
|---------------|-------------------|-----|-------|-------|-------|-------|----|----|-----|----------|----|----|-------|----|----|----|----|-----|--------|--|-----|
| | | | | M-A | M-A | M-A | OR | DR | TOT | PF | FD | BS | BA | | | | | | | | |
| 13 | Jalen Reed | F | 20:00 | 3-5 | 1-1 | 2-2 | 1 | 3 | 4 | 2 | 1 | 9 | 1 | 0 | 0 | 2 | 1 | -10 | | | |
| 9 | Will Baker | C | 21:24 | 4-9 | 1-3 | 3-4 | 4 | 0 | 4 | 2 | 2 | 12 | 1 | 2 | 0 | 0 | 0 | -14 | | | |
| 2 | Mike Williams III | G | 23:28 | 5-11 | 2-5 | 4-5 | 0 | 3 | 3 | 4 | 2 | 16 | 0 | 3 | 0 | 0 | 0 | -9 | | | |
| 3 | Jalen Cook | G | 19:53 | 4-13 | 3-9 | 0-0 | 2 | 1 | 3 | 4 | 1 | 11 | 2 | 0 | 0 | 0 | 1 | -14 | | | |
| 6 | Jordan Wright | G | 30:54 | 4-12 | 1-5 | 1-3 | 0 | 1 | 1 | 4 | 3 | 10 | 5 | 2 | 1 | 1 | 0 | -22 | | | |
| 0 | Trae Hannibal | | 20:20 | 2-6 | 0-0 | 3-6 | 0 | 2 | 2 | 1 | 5 | 7 | 2 | 2 | 3 | 0 | 1 | -11 | | | |
| 12 | Hunter Dean | | 15:11 | 1-1 | 0-0 | 1-2 | 2 | 1 | 3 | 0 | 1 | 3 | 0 | 1 | 0 | 0 | 0 | 0 | | | |
| 15 | Tyrell Ward | | 19:15 | 0-4 | 0-2 | 2-3 | 1 | 2 | 3 | 3 | 2 | 2 | 2 | 0 | 3 | 1 | 1 | -5 | | | |
| 20 | Derek Fountain | | 19:03 | 6-9 | 2-2 | 0-0 | 2 | 4 | 6 | 2 | 0 | 14 | 0 | 0 | 0 | 0 | 0 | -14 | | | |
| 5 | Mwani Wilkinson | | 10:32 | 1-1 | 1-1 | 1-2 | 0 | 1 | 1 | 2 | 1 | 4 | 0 | 0 | 0 | 0 | 0 | -6 | | | |
| Team | | | | | | | | | | 2 | 1 | 3 | | | | 0 | | | | | |
| Totals | | | | 30-71 | 11-28 | 17-27 | 14 | 19 | 33 | 24 | 18 | 88 | 13 | 10 | 7 | 4 | 4 | -21 | | | |

| Shooting By Period | | |
|---------------------|-------|-------|
| 1 st FG% | 16-33 | 48.5% |
| 3PT% | 5-13 | 38.5% |
| FT% | 7-13 | 53.8% |
| 2 nd FG% | 14-38 | 36.8% |
| 3PT% | 6-15 | 40.0% |
| FT% | 10-14 | 71.4% |
| GM FG% | 30-71 | 42.3% |
| 3PT% | 11-28 | 39.3% |
| FT% | 17-27 | 63.0% |

Dead Ball Rebounds: 6, 0

Technical Fouls::NONE

Alabama - 109 Record: 14-6 (6-1)

| NO. | Name | F/C | Min | FG | | 3P | | FT | | Rebounds | | | Fouls | | TP | AS | TO | ST | Blocks | | +/- |
|---------------|------------------------|-----|-------|-------|-------|-------|----|----|-----|----------|----|-----|-------|----|----|----|----|----|--------|--|-----|
| | | | | M-A | M-A | M-A | OR | DR | TOT | PF | FD | BS | BA | | | | | | | | |
| 2 | Grant Nelson | F | 24:00 | 3-4 | 0-1 | 6-6 | 2 | 3 | 5 | 1 | 6 | 12 | 1 | 0 | 0 | 1 | 0 | 19 | | | |
| 1 | Mark Sears | G | 29:23 | 5-11 | 0-5 | 11-11 | 1 | 2 | 3 | 0 | 6 | 21 | 5 | 2 | 1 | 0 | 0 | 16 | | | |
| 3 | Rylan Griffen | G | 17:44 | 4-7 | 4-6 | 0-0 | 0 | 2 | 2 | 5 | 1 | 12 | 4 | 2 | 0 | 0 | 1 | 4 | | | |
| 12 | Latrell Wrightsell Jr. | G | 29:09 | 6-12 | 5-10 | 2-2 | 0 | 1 | 1 | 3 | 1 | 19 | 0 | 1 | 2 | 0 | 0 | 19 | | | |
| 55 | Aaron Estrada | G | 30:54 | 6-13 | 2-6 | 4-5 | 4 | 2 | 6 | 0 | 4 | 18 | 7 | 3 | 2 | 0 | 1 | 28 | | | |
| 10 | Mouhamed Dioubate | | 14:24 | 4-4 | 0-0 | 0-1 | 0 | 1 | 1 | 2 | 2 | 8 | 2 | 2 | 1 | 1 | 0 | 4 | | | |
| 11 | Mohamed Wague | | 03:48 | 0-0 | 0-0 | 0-0 | 1 | 1 | 2 | 2 | 0 | 0 | 1 | 0 | 0 | 0 | 0 | -6 | | | |
| 24 | Sam Walters | | 10:57 | 2-3 | 1-2 | 2-2 | 0 | 5 | 5 | 2 | 2 | 7 | 1 | 0 | 0 | 1 | 0 | -3 | | | |
| 15 | Jarin Stevenson | | 20:12 | 2-5 | 1-3 | 0-0 | 0 | 5 | 5 | 1 | 1 | 5 | 2 | 1 | 1 | 0 | 1 | 15 | | | |
| 4 | Davin Cosby Jr. | | 07:19 | 1-1 | 1-1 | 0-1 | 1 | 2 | 3 | 0 | 1 | 3 | 0 | 0 | 1 | 0 | 0 | 1 | | | |
| 23 | Nick Pringle | | 07:48 | 1-2 | 0-0 | 0-0 | 1 | 3 | 4 | 2 | 0 | 2 | 0 | 1 | 0 | 1 | 1 | 6 | | | |
| 31 | Max Scharnowski | | 02:11 | 1-1 | 0-0 | 0-0 | 0 | 0 | 0 | 1 | 0 | 2 | 0 | 0 | 0 | 0 | 0 | 1 | | | |
| 32 | Kai Spears | | 02:11 | 0-0 | 0-0 | 0-0 | 0 | 0 | 0 | 0 | 0 | 0 | 0 | 0 | 0 | 0 | 0 | 1 | | | |
| Team | | | | | | | | | | 1 | 4 | 5 | | | | 0 | | | | | |
| Totals | | | | 35-63 | 14-34 | 25-28 | 11 | 31 | 42 | 20 | 24 | 109 | 23 | 12 | 8 | 4 | 4 | 21 | | | |

| Shooting By Period | | |
|---------------------|-------|-------|
| 1 st FG% | 15-33 | 45.5% |
| 3PT% | 8-23 | 34.8% |
| FT% | 12-14 | 85.7% |
| 2 nd FG% | 20-30 | 66.7% |
| 3PT% | 6-11 | 54.5% |
| FT% | 13-14 | 92.9% |
| GM FG% | 35-63 | 55.6% |
| 3PT% | 14-34 | 41.2% |
| FT% | 25-28 | 89.3% |

Dead Ball Rebounds: 1, 0

Technical Fouls:Coach 1st3:13Griffen 2nd11:44

| | LSU | ALA |
|------------------|---------------------------|---------------------------|
| Biggest lead | 2 (1 st 19:13) | 23 (2 nd 0:21) |
| Best Scoring Run | 7 (1 st 9:14) | 8 (2 nd 11:44) |
| Lead Changes | 9 | |
| Times Tied | 5 | |
| Time with Lead | 01:26 | 33:45 |

| Points from | LSU | ALA |
|---------------|-----|-----|
| Turnovers | 11 | 12 |
| Paint | 34 | 42 |
| Second Chance | 18 | 16 |
| Fast Breaks | 4 | 22 |
| Bench | 30 | 27 |

| | Period by Period Scoring | | |
|-----|--------------------------|-----|-----|
| | 1st | 2nd | TOT |
| LSU | 44 | 44 | 88 |
| ALA | 50 | 59 | 109 |



LSU at Alabama

01/27/24 Coleman Coliseum, Tuscaloosa
2023-24 Men's Basketball

Game Time: 7:00 PM
Game Duration: 2:13
Attendance: 13,474

Officials: Doug Shows, Owen Shortt, Bharat Ramnanan

Period 1

Quarter Starters:

| | | | | | |
|------------|------------------|------------|-------------|---------------------|--------------|
| ALA | 1 Sears M | 2 Nelson G | 3 Griffen R | 12 Wrightsell Jr. L | 55 Estrada A |
| LSU | 2 Williams III M | 3 Cook J | 6 Wright J | 9 Baker W | 13 Reed J |

| Game Time | ALA | Score | Diff | LSU |
|-----------|---|--------------|-----------|---|
| 20:00 | 2 NELSON G jumpball lost | | | 9 BAKER W jumpball won |
| 19:46 | | | | 9 BAKER W 2pt FG in the paint, layup missed |
| 19:42 | | | | 9 BAKER W offensive rebound (1) |
| 19:41 | | | | 9 BAKER W 2pt FG second chance in the paint, layup missed |
| 19:39 | | | | offensive rebound (2) |
| 19:33 | 3 GRIFFEN R foul drawn (1) | | | 9 BAKER W foul offensive (1 - 1) |
| 19:33 | | | | 9 BAKER W turnover offensive (1) |
| 19:23 | 55 ESTRADA A 3pt FG from turnover, jump shot missed | | | |
| 19:18 | | | | 13 REED J defensive rebound (1) |
| 19:13 | | 0-2 | -2 | 9 BAKER W 2pt FG in the paint, layup made (2) |
| 19:13 | | | | 13 REED J assist (1) |
| 19:01 | 3 GRIFFEN R 3pt FG , jump shot made (3) | 3-2 | 1 | |
| 18:46 | | | | 3 COOK J 3pt FG , jump shot missed |
| 18:46 | defensive rebound (1) | | | |
| 18:22 | 12 WRIGHTSELL JR. L 3pt FG , jump shot made (3) | 6-2 | 4 | |
| 18:22 | 55 ESTRADA A assist (1) | | | |
| 18:10 | | 6-5 | 1 | 2 WILLIAMS III M 3pt FG , jump shot made (3) |
| 18:10 | | | | 3 COOK J assist (1) |
| 17:55 | 12 WRIGHTSELL JR. L 3pt FG , jump shot made (6) | 9-5 | 4 | |
| 17:55 | 3 GRIFFEN R assist (1) | | | |
| 17:36 | | 9-8 | 1 | 2 WILLIAMS III M 3pt FG , jump shot made (6) |
| 17:36 | | | | 3 COOK J assist (2) |
| 17:15 | 55 ESTRADA A 3pt FG , jump shot made (3) | 12-8 | 4 | |
| 17:15 | 3 GRIFFEN R assist (2) | | | |
| 17:00 | | 12-10 | 2 | 3 COOK J 2pt FG in the paint, layup made (2) |
| 16:52 | 55 ESTRADA A foul drawn (1) | | | 13 REED J foul shooting (1 - 2) |
| 16:52 | 55 ESTRADA A free throw fast break 1 - 2 missed | | | |
| 16:52 | offensive dead ball rebound (1) | | | |
| 16:52 | 55 ESTRADA A free throw fast break 2 - 2 made (4) | 13-10 | 3 | |
| 16:36 | | | | 3 COOK J 3pt FG , jump shot missed |
| 16:32 | 1 SEARS M defensive rebound (1) | | | |
| 16:22 | 2 NELSON G 2pt FG in the paint, layup made (2) | 15-10 | 5 | |
| 16:22 | 3 GRIFFEN R assist (3) | | | |
| 16:09 | 55 ESTRADA A substitution out | | | |
| 16:09 | 10 DIOUBATE M substitution in | | | |
| 16:09 | 2 NELSON G substitution out | | | |
| 16:09 | 11 WAGUE M substitution in | | | |
| 16:04 | 11 WAGUE M foul shooting (1 - 1) | | | 9 BAKER W foul drawn (1) |
| 16:04 | | | | 9 BAKER W free throw 1 - 2 missed |
| 16:04 | | | | offensive dead ball rebound (1) |
| 16:04 | | | | 3 COOK J substitution out |
| 16:04 | | | | 0 HANNIBAL T substitution in |
| 16:04 | | 15-11 | 4 | 9 BAKER W free throw 2 - 2 made (3) |



LSU at Alabama

01/27/24 Coleman Coliseum, Tuscaloosa
2023-24 Men's Basketball

Game Time: 7:00 PM
Game Duration: 2:13
Attendance: 13,474

Officials: Doug Shows, Owen Shortt, Bharat Ramnanan

| Game Time | ALA | Score | Diff | LSU |
|-----------|--|--------------|-----------|---|
| 16:04 | | | | 9 BAKER W substitution out |
| 16:04 | | | | 12 DEAN H substitution in |
| 15:51 | 3 GRIFFEN R 3pt FG , jump shot missed | | | |
| 15:49 | | | | defensive rebound (4) |
| 15:49 | Timeout media | | | |
| 15:49 | 3 GRIFFEN R substitution out | | | |
| 15:49 | 24 WALTERS S substitution in | | | |
| 15:27 | | 15-13 | 2 | 12 DEAN H 2pt FG in the paint, layup made (2) |
| 15:27 | | | | 6 WRIGHT J assist (1) |
| 15:08 | 24 WALTERS S 3pt FG , jump shot missed | | | |
| 15:05 | | | | 13 REED J defensive rebound (2) |
| 14:59 | | | | 2 WILLIAMS III M 3pt FG , jump shot missed |
| 14:56 | 11 WAGUE M defensive rebound (1) | | | |
| 14:51 | 10 DIOUBATE M 2pt FG fast break in the paint, layup made (2) | 17-13 | 4 | |
| 14:51 | 1 SEARS M assist (1) | | | |
| 14:40 | | | | 6 WRIGHT J 3pt FG , jump shot missed |
| 14:37 | | | | 12 DEAN H offensive rebound (1) |
| 14:32 | | 17-15 | 2 | 2 WILLIAMS III M 2pt FG second chance outside the paint, jump shot made (8) |
| 14:14 | 1 SEARS M 3pt FG , jump shot missed | | | |
| 14:11 | | | | 2 WILLIAMS III M defensive rebound (1) |
| 13:56 | | 17-17 | 0 | 6 WRIGHT J 2pt FG outside the paint, jump shot made (2) |
| 13:48 | 10 DIOUBATE M foul drawn (1) | | | 13 REED J foul personal (2 - 3) |
| 13:48 | 1 SEARS M substitution out | | | |
| 13:48 | 10 DIOUBATE M substitution out | | | |
| 13:48 | 11 WAGUE M substitution out | | | |
| 13:48 | 12 WRIGHTSELL JR. L substitution out | | | |
| 13:48 | 2 NELSON G substitution in | | | |
| 13:48 | 3 GRIFFEN R substitution in | | | |
| 13:48 | 15 STEVENSON J substitution in | | | |
| 13:48 | 55 ESTRADA A substitution in | | | |
| 13:48 | | | | 2 WILLIAMS III M substitution out |
| 13:48 | | | | 6 WRIGHT J substitution out |
| 13:48 | | | | 13 REED J substitution out |
| 13:48 | | | | 3 COOK J substitution in |
| 13:48 | | | | 15 WARD T substitution in |
| 13:48 | | | | 20 FOUNTAIN D substitution in |
| 13:43 | 55 ESTRADA A foul drawn (2) | | | 3 COOK J foul personal (1 - 4) |
| 13:34 | 55 ESTRADA A 2pt FG outside the paint, jump shot missed | | | |
| 13:33 | | | | 0 HANNIBAL T defensive rebound (1) |
| 13:33 | 24 WALTERS S foul personal (1 - 2) | | | 0 HANNIBAL T foul drawn (1) |
| 13:15 | 24 WALTERS S foul shooting (2 - 3) | | | 0 HANNIBAL T foul drawn (2) |
| 13:15 | | 17-18 | -1 | 0 HANNIBAL T free throw 1 - 2 made (1) |
| 13:15 | 24 WALTERS S substitution out | | | |
| 13:15 | 4 COSBY JR. D substitution in | | | |
| 13:15 | | | | 0 HANNIBAL T free throw 2 - 2 missed |
| 13:15 | 15 STEVENSON J defensive rebound (1) | | | |
| 12:56 | 15 STEVENSON J 3pt FG , jump shot made (3) | 20-18 | 2 | |
| 12:56 | 55 ESTRADA A assist (2) | | | |



LSU at Alabama

01/27/24 Coleman Coliseum, Tuscaloosa
2023-24 Men's Basketball

Game Time: 7:00 PM
Game Duration: 2:13
Attendance: 13,474

Officials: Doug Shows, Owen Shortt, Bharat Ramnanan

| Game Time | ALA | Score | Diff | LSU |
|-----------|---|--------------|----------|--|
| 12:33 | | 20-20 | 0 | 20 FOUNTAIN D 2pt FG in the paint, layup made (2) |
| 12:25 | 2 NELSON G foul drawn (1) | | | 15 WARD T foul personal (1 - 5) |
| 12:25 | | | | 12 DEAN H substitution out |
| 12:25 | | | | 9 BAKER W substitution in |
| 12:19 | 2 NELSON G foul drawn (2) | | | 9 BAKER W foul shooting (2 - 6) |
| 12:19 | 2 NELSON G free throw 1 - 3 made (3) | 21-20 | 1 | |
| 12:19 | 2 NELSON G free throw 2 - 3 made (4) | 22-20 | 2 | |
| 12:19 | | | | 9 BAKER W substitution out |
| 12:19 | | | | 12 DEAN H substitution in |
| 12:19 | 2 NELSON G free throw 3 - 3 made (5) | 23-20 | 3 | |
| 12:19 | | | | 0 HANNIBAL T substitution out |
| 12:19 | | | | 2 WILLIAMS III M substitution in |
| 12:02 | | | | 20 FOUNTAIN D 2pt FG in the paint, layup missed |
| 12:00 | 4 COSBY JR. D defensive rebound (1) | | | |
| 11:56 | 15 STEVENSON J 2pt FG in the paint, layup blocked | | | |
| 11:56 | | | | 15 WARD T block (1) |
| 11:50 | | | | 20 FOUNTAIN D defensive rebound (1) |
| 11:47 | | | | 2 WILLIAMS III M 2pt FG in the paint, layup missed |
| 11:45 | 4 COSBY JR. D defensive rebound (2) | | | |
| 11:39 | 4 COSBY JR. D 3pt FG , jump shot made (3) | 26-20 | 6 | |
| 11:39 | 55 ESTRADA A assist (3) | | | |
| 11:23 | | 26-23 | 3 | 3 COOK J 3pt FG , jump shot made (5) |
| 11:13 | 55 ESTRADA A 3pt FG , jump shot missed | | | |
| 11:11 | | | | 2 WILLIAMS III M defensive rebound (2) |
| 11:02 | | | | 3 COOK J 3pt FG , jump shot missed |
| 10:59 | | | | 3 COOK J offensive rebound (1) |
| 10:58 | | 26-26 | 0 | 3 COOK J 3pt FG second chance, jump shot made (8) |
| 10:45 | 3 GRIFFEN R 3pt FG , jump shot missed | | | |
| 10:42 | 4 COSBY JR. D offensive rebound (3) | | | |
| 10:39 | 55 ESTRADA A 3pt FG second chance, jump shot missed | | | |
| 10:37 | | | | 12 DEAN H defensive rebound (2) |
| 10:23 | | | | 3 COOK J 3pt FG , jump shot missed |
| 10:20 | 15 STEVENSON J defensive rebound (2) | | | |
| 10:14 | 2 NELSON G 3pt FG , jump shot missed | | | |
| 10:11 | | | | 20 FOUNTAIN D defensive rebound (2) |
| 09:48 | 55 ESTRADA A steal (1) | | | 2 WILLIAMS III M turnover bad pass (1) |
| 09:47 | 4 COSBY JR. D foul drawn (1) | | | 2 WILLIAMS III M foul personal (1 - 7) |
| 09:47 | Timeout media | | | |
| 09:47 | 2 NELSON G substitution out | | | |
| 09:47 | 15 STEVENSON J substitution out | | | |
| 09:47 | 55 ESTRADA A substitution out | | | |
| 09:47 | 1 SEARS M substitution in | | | |
| 09:47 | 11 WAGUE M substitution in | | | |
| 09:47 | 12 WRIGHTSELL JR. L substitution in | | | |
| 09:47 | | | | 2 WILLIAMS III M substitution out |
| 09:47 | | | | 20 FOUNTAIN D substitution out |
| 09:47 | | | | 0 HANNIBAL T substitution in |
| 09:47 | | | | 6 WRIGHT J substitution in |
| 09:47 | 4 COSBY JR. D 1&1 free throw 1 missed | | | |



LSU at Alabama

01/27/24 Coleman Coliseum, Tuscaloosa
2023-24 Men's Basketball

Game Time: 7:00 PM
Game Duration: 2:13
Attendance: 13,474

Officials: Doug Shows, Owen Shortt, Bharat Ramnanan

| Game Time | ALA | Score | Diff | LSU |
|-----------|---|--------------|-----------|---|
| 09:46 | | | | 0 HANNIBAL T defensive rebound (2) |
| 09:27 | 3 GRIFFEN R foul personal (1 - 4) | | | 0 HANNIBAL T foul drawn (3) |
| 09:26 | 4 COSBY JR. D substitution out | | | |
| 09:26 | 24 WALTERS S substitution in | | | |
| 09:14 | 3 GRIFFEN R foul shooting (2 - 5) | | | 12 DEAN H foul drawn (1) |
| 09:14 | | 26-27 | -1 | 12 DEAN H free throw 1 - 2 made (3) |
| 09:14 | | | | 12 DEAN H free throw 2 - 2 missed |
| 09:13 | 24 WALTERS S defensive rebound (1) | | | |
| 09:03 | 12 WRIGHTSELL JR. L 3pt FG , jump shot missed | | | |
| 09:01 | 11 WAGUE M offensive rebound (2) | | | |
| 08:54 | 1 SEARS M 2pt FG second chance in the paint, layup made (2) | 28-27 | 1 | |
| 08:54 | 11 WAGUE M assist (1) | | | |
| 08:34 | | | | 0 HANNIBAL T 2pt FG in the paint, layup missed |
| 08:31 | | | | 3 COOK J offensive rebound (2) |
| 08:28 | 11 WAGUE M foul personal (2 - 6) | | | 3 COOK J foul drawn (1) |
| 08:28 | | | | 12 DEAN H substitution out |
| 08:28 | | | | 15 WARD T substitution out |
| 08:28 | | | | 5 WILKINSON M substitution in |
| 08:28 | | | | 20 FOUNTAIN D substitution in |
| 08:20 | | 28-29 | -1 | 6 WRIGHT J 2pt FG second chance in the paint, layup made (4) |
| 08:20 | 3 GRIFFEN R foul shooting (3 - 7) | | | 6 WRIGHT J foul drawn (1) |
| 08:20 | 3 GRIFFEN R substitution out | | | |
| 08:20 | 11 WAGUE M substitution out | | | |
| 08:20 | 15 STEVENSON J substitution in | | | |
| 08:20 | 55 ESTRADA A substitution in | | | |
| 08:20 | | | | 6 WRIGHT J free throw 1 - 1 missed |
| 08:19 | 24 WALTERS S defensive rebound (2) | | | |
| 08:02 | 1 SEARS M foul drawn (1) | | | 0 HANNIBAL T foul personal (1 - 8) |
| 08:02 | | | | 0 HANNIBAL T substitution out |
| 08:02 | | | | 2 WILLIAMS III M substitution in |
| 08:02 | 24 WALTERS S substitution out | | | |
| 08:02 | 10 DIOUBATE M substitution in | | | |
| 08:02 | 1 SEARS M 1&1 free throw 1 made (3) | 29-29 | 0 | |
| 08:02 | 1 SEARS M 1&1 free throw 2 made (4) | 30-29 | 1 | |
| 07:52 | | 30-32 | -2 | 5 WILKINSON M 3pt FG , jump shot made (3) |
| 07:52 | | | | 6 WRIGHT J assist (2) |
| 07:36 | Timeout media | | | |
| 07:35 | 15 STEVENSON J 2pt FG in the paint, dunk, made (5) | 32-32 | 0 | |
| 07:35 | 55 ESTRADA A assist (4) | | | |
| 07:11 | | | | 6 WRIGHT J turnover bad pass (1) |
| 06:59 | 10 DIOUBATE M turnover bad pass (1) | | | 6 WRIGHT J steal (1) |
| 06:51 | | | | 2 WILLIAMS III M 3pt FG from turnover, jump shot missed |
| 06:49 | | | | 20 FOUNTAIN D offensive rebound (3) |
| 06:48 | | | | 20 FOUNTAIN D 2pt FG from turnover second chance in the paint, layup missed |
| 06:46 | 12 WRIGHTSELL JR. L defensive rebound (1) | | | |
| 06:42 | 12 WRIGHTSELL JR. L 2pt FG in the paint, layup missed | | | |
| 06:40 | | | | 20 FOUNTAIN D defensive rebound (4) |
| 06:22 | | | | 6 WRIGHT J 3pt FG , jump shot missed |



LSU at Alabama

01/27/24 Coleman Coliseum, Tuscaloosa
2023-24 Men's Basketball

Game Time: 7:00 PM
Game Duration: 2:13
Attendance: 13,474

Officials: Doug Shows, Owen Shortt, Bharat Ramnaran

| Game Time | ALA | Score | Diff | LSU |
|-----------|--|--------------|----------|---|
| 06:18 | 10 DIOUBATE M defensive rebound (1) | | | |
| 06:12 | 12 WRIGHTSELL JR. L 3pt FG , jump shot made (9) | 35-32 | 3 | |
| 06:12 | 1 SEARS M assist (2) | | | |
| 05:44 | 10 DIOUBATE M substitution out | | | |
| 05:44 | 2 NELSON G substitution in | | | |
| 05:44 | | | | 3 COOK J substitution out |
| 05:44 | | | | 6 WRIGHT J substitution out |
| 05:44 | | | | 20 FOUNTAIN D substitution out |
| 05:44 | | | | 0 HANNIBAL T substitution in |
| 05:44 | | | | 12 DEAN H substitution in |
| 05:44 | | | | 15 WARD T substitution in |
| 05:35 | | | | 2 WILLIAMS III M 2pt FG in the paint, layup missed |
| 05:32 | 15 STEVENSON J defensive rebound (3) | | | |
| 05:28 | 12 WRIGHTSELL JR. L 3pt FG , jump shot missed | | | |
| 05:26 | 55 ESTRADA A offensive rebound (1) | | | |
| 05:25 | 55 ESTRADA A foul drawn (3) | | | 15 WARD T foul personal (2 - 9) |
| 05:25 | | | | 15 WARD T substitution out |
| 05:25 | | | | 6 WRIGHT J substitution in |
| 05:25 | 55 ESTRADA A 1&1 free throw 1 made (5) | 36-32 | 4 | |
| 05:25 | | | | 5 WILKINSON M substitution out |
| 05:25 | | | | 20 FOUNTAIN D substitution in |
| 05:25 | 55 ESTRADA A 1&1 free throw 2 made (6) | 37-32 | 5 | |
| 05:09 | | 37-34 | 3 | 0 HANNIBAL T 2pt FG in the paint, layup made (3) |
| 04:57 | 1 SEARS M 3pt FG , jump shot missed | | | |
| 04:55 | 55 ESTRADA A offensive rebound (2) | | | |
| 04:46 | 55 ESTRADA A 3pt FG second chance, jump shot missed | | | |
| 04:44 | 2 NELSON G offensive rebound (1) | | | |
| 04:35 | 2 NELSON G 2pt FG second chance in the paint, layup made (7) | 39-34 | 5 | |
| 04:13 | | 39-36 | 3 | 20 FOUNTAIN D 2pt FG in the paint, jump shot made (4) |
| 03:59 | 2 NELSON G foul drawn (3) | | | 2 WILLIAMS III M foul shooting (2 - 10) |
| 03:59 | | | | Timeout media |
| 03:59 | 15 STEVENSON J substitution out | | | |
| 03:59 | 10 DIOUBATE M substitution in | | | |
| 03:59 | | | | 2 WILLIAMS III M substitution out |
| 03:59 | | | | 5 WILKINSON M substitution in |
| 03:59 | 2 NELSON G free throw 1 - 2 made (8) | 40-36 | 4 | |
| 03:59 | 2 NELSON G free throw 2 - 2 made (9) | 41-36 | 5 | |
| 03:33 | 2 NELSON G foul shooting (1 - 8) | | | 0 HANNIBAL T foul drawn (4) |
| 03:33 | | 41-37 | 4 | 0 HANNIBAL T free throw 1 - 2 made (4) |
| 03:33 | | 41-38 | 3 | 0 HANNIBAL T free throw 2 - 2 made (5) |
| 03:17 | 55 ESTRADA A turnover lost ball (1) | | | 0 HANNIBAL T steal (1) |
| 03:13 | 12 WRIGHTSELL JR. L foul shooting (1 - 9) | | | 5 WILKINSON M foul drawn (1) |
| 03:13 | foul coach class A technical (10) | | | |
| 03:13 | | 41-39 | 2 | 6 WRIGHT J free throw 1 - 2 made (5) |
| 03:13 | | | | 6 WRIGHT J free throw 2 - 2 missed |
| 03:13 | | | | offensive dead ball rebound (2) |
| 03:13 | | | | 5 WILKINSON M free throw 1 - 2 missed |
| 03:13 | | | | offensive dead ball rebound (3) |



LSU at Alabama

01/27/24 Coleman Coliseum, Tuscaloosa
2023-24 Men's Basketball

Game Time: 7:00 PM
Game Duration: 2:13
Attendance: 13,474

Officials: Doug Shows, Owen Shortt, Bharat Ramnanan

| Game Time | ALA | Score | Diff | LSU |
|----------------------|---|--------------|----------|---|
| 03:13 | | 41-40 | 1 | 5 WILKINSON M free throw 2 - 2 made (4) |
| 02:53 | 12 WRIGHTSELL JR. L 3pt FG , jump shot made (12) | 44-40 | 4 | |
| 02:53 | 55 ESTRADA A assist (5) | | | |
| 02:45 | | 44-42 | 2 | 0 HANNIBAL T 2pt FG fast break in the paint, layup made (7) |
| 02:31 | 1 SEARS M 3pt FG , jump shot missed | | | |
| 02:28 | 55 ESTRADA A offensive rebound (3) | | | |
| 02:26 | 12 WRIGHTSELL JR. L 3pt FG second chance, jump shot missed | | | |
| 02:22 | | | | 5 WILKINSON M defensive rebound (1) |
| 02:05 | | | | 6 WRIGHT J 2pt FG in the paint, layup missed |
| 02:01 | 2 NELSON G defensive rebound (2) | | | |
| 01:45 | 12 WRIGHTSELL JR. L foul drawn (1) | | | 5 WILKINSON M foul personal (1 - 11) |
| 01:45 | 12 WRIGHTSELL JR. L free throw 1 - 2 made (13) | 45-42 | 3 | |
| 01:45 | 10 DIOUBATE M substitution out | | | |
| 01:45 | 15 STEVENSON J substitution in | | | |
| 01:45 | 12 WRIGHTSELL JR. L free throw 2 - 2 made (14) | 46-42 | 4 | |
| 01:28 | 12 WRIGHTSELL JR. L steal (1) | | | 0 HANNIBAL T turnover bad pass (1) |
| 01:16 | 1 SEARS M 2pt FG from turnover in the paint, layup made (6) | 48-42 | 6 | |
| 00:48 | 15 STEVENSON J steal (1) | | | 12 DEAN H turnover lost ball (1) |
| 00:43 | 55 ESTRADA A 2pt FG fast break from turnover in the paint, layup made (8) | 50-42 | 8 | |
| 00:43 | 15 STEVENSON J assist (1) | | | |
| 00:42 | | | | Timeout 30 Sec |
| 00:42 | | | | 0 HANNIBAL T substitution out |
| 00:42 | | | | 3 COOK J substitution in |
| 00:28 | | | | 3 COOK J 2pt FG in the paint, layup missed |
| 00:28 | | | | 20 FOUNTAIN D offensive rebound (5) |
| 00:28 | | 50-44 | 6 | 20 FOUNTAIN D 2pt FG second chance in the paint, dunk, made (6) |
| 00:00 | 1 SEARS M 3pt FG , jump shot missed | | | |
| 00:00 | 2 NELSON G offensive rebound (3) | | | |
| END OF PERIOD | | | | |
| ALA 50-44 LSU | | | | |



LSU at Alabama

01/27/24 Coleman Coliseum, Tuscaloosa
2023-24 Men's Basketball

Game Time: 7:00 PM
Game Duration: 2:13
Attendance: 13,474

Officials: Doug Shows, Owen Shortt, Bharat Ramnanan

LSU - 44

Table with columns: NO. Name, Min, FG M-A, 3P M-A, FT M-A, Rebounds (OR, DR, TOT), Fouls (PF, FD), TP, AS, TO, ST, Blocks (BS, BA), +/-

Shooting By Period table with columns: 1st FG%, 3PT%, FT%, GM FG%, 3PT%, FT%

Dead Ball Rebounds: 3, 0

Technical Fouls::NONE

Alabama - 50

Table with columns: NO. Name, Min, FG M-A, 3P M-A, FT M-A, Rebounds (OR, DR, TOT), Fouls (PF, FD), TP, AS, TO, ST, Blocks (BS, BA), +/-

Shooting By Period table with columns: 1st FG%, 3PT%, FT%, GM FG%, 3PT%, FT%

Dead Ball Rebounds: 1, 0

Technical Fouls:Coach 1st3:13

Summary table with columns: LSU, ALA for categories: Biggest lead, Best Scoring Run, Lead Changes, Times Tied, Time with Lead

Summary table with columns: LSU, ALA for categories: Points from, Turnovers, Paint, Second Chance, Fast Breaks, Bench

Period by Period Scoring table with columns: 1st, 2nd, TOT for LSU and ALA



LSU at Alabama

01/27/24 Coleman Coliseum, Tuscaloosa
2023-24 Men's Basketball

Game Time: 7:00 PM
Game Duration: 2:13
Attendance: 13,474

Officials: Doug Shows, Owen Shortt, Bharat Ramnanan

Period 2

Quarter Starters:

| | | | | | |
|------------|------------------|------------|-------------|---------------------|--------------|
| ALA | 1 Sears M | 2 Nelson G | 3 Griffen R | 12 Wrightsell Jr. L | 55 Estrada A |
| LSU | 2 Williams III M | 3 Cook J | 6 Wright J | 9 Baker W | 13 Reed J |

| Game Time | ALA | Score | Diff | LSU |
|-----------|---|--------------|----------|--|
| 20:00 | 15 STEVENSON J substitution out | | | |
| 20:00 | 3 GRIFFEN R substitution in | | | |
| 20:00 | | | | 5 WILKINSON M substitution out |
| 20:00 | | | | 12 DEAN H substitution out |
| 20:00 | | | | 20 FOUNTAIN D substitution out |
| 20:00 | | | | 2 WILLIAMS III M substitution in |
| 20:00 | | | | 9 BAKER W substitution in |
| 20:00 | | | | 13 REED J substitution in |
| 19:32 | 55 ESTRADA A 2pt FG outside the paint, turnaround jump shot blocked | | | |
| 19:32 | | | | 13 REED J block (1) |
| 19:27 | | | | 13 REED J defensive rebound (3) |
| 19:16 | | 50-46 | 4 | 6 WRIGHT J 2pt FG in the paint, layup made (7) |
| 18:52 | 12 WRIGHTSELL JR. L 3pt FG , jump shot missed | | | |
| 18:49 | | | | 2 WILLIAMS III M defensive rebound (3) |
| 18:41 | | | | 9 BAKER W 3pt FG , jump shot missed |
| 18:38 | 55 ESTRADA A defensive rebound (4) | | | |
| 18:33 | 55 ESTRADA A 2pt FG fast break in the paint, layup made (10) | 52-46 | 6 | |
| 18:17 | | 52-48 | 4 | 13 REED J 2pt FG in the paint, layup made (2) |
| 18:08 | 2 NELSON G foul drawn (4) | | | 3 COOK J foul personal (2 - 1) |
| 18:08 | 3 GRIFFEN R substitution out | | | |
| 18:08 | 15 STEVENSON J substitution in | | | |
| 18:08 | | | | 2 WILLIAMS III M substitution out |
| 18:08 | | | | 0 HANNIBAL T substitution in |
| 18:00 | 12 WRIGHTSELL JR. L 3pt FG , jump shot missed | | | |
| 17:56 | 1 SEARS M offensive rebound (2) | | | |
| 17:54 | 55 ESTRADA A 3pt FG second chance, jump shot made (13) | 55-48 | 7 | |
| 17:54 | 1 SEARS M assist (3) | | | |
| 17:39 | | | | 3 COOK J 2pt FG outside the paint, jump shot missed |
| 17:36 | 2 NELSON G defensive rebound (4) | | | |
| 17:32 | 2 NELSON G foul drawn (5) | | | 6 WRIGHT J foul personal (1 - 2) |
| 17:15 | 15 STEVENSON J 3pt FG , jump shot missed | | | |
| 17:11 | | | | 3 COOK J defensive rebound (3) |
| 17:06 | | | | 3 COOK J 2pt FG outside the paint, jump shot blocked |
| 17:06 | 2 NELSON G block (1) | | | |
| 17:06 | defensive rebound (24) | | | |
| 16:51 | 1 SEARS M 2pt FG in the paint, layup made (8) | 57-48 | 9 | |
| 16:51 | 2 NELSON G assist (1) | | | |
| 16:41 | | 57-50 | 7 | 9 BAKER W 2pt FG in the paint, layup made (5) |
| 16:41 | | | | 6 WRIGHT J assist (3) |
| 16:27 | 55 ESTRADA A 2pt FG in the paint, layup made (15) | 59-50 | 9 | |
| 16:27 | 1 SEARS M assist (4) | | | |
| 16:01 | | 59-53 | 6 | 9 BAKER W 3pt FG , jump shot made (8) |



LSU at Alabama

01/27/24 Coleman Coliseum, Tuscaloosa
2023-24 Men's Basketball

Game Time: 7:00 PM
Game Duration: 2:13
Attendance: 13,474

Officials: Doug Shows, Owen Shortt, Bharat Ramnanan

| Game Time | ALA | Score | Diff | LSU |
|-----------|--|--------------|-----------|---|
| 16:01 | | | | 6 WRIGHT J assist (4) |
| 16:00 | | | | Timeout 30 Sec |
| 16:00 | Timeout media | | | |
| 16:00 | 2 NELSON G substitution out | | | |
| 16:00 | 23 PRINGLE N substitution in | | | |
| 15:46 | 1 SEARS M turnover bad pass (1) | | | 0 HANNIBAL T steal (2) |
| 15:42 | 12 WRIGHTSELL JR. L steal (2) | | | 0 HANNIBAL T turnover bad pass (2) |
| 15:38 | 12 WRIGHTSELL JR. L 2pt FG from turnover in the paint, layup made (16) | 61-53 | 8 | |
| 15:14 | | | | 3 COOK J 3pt FG , jump shot missed |
| 15:11 | 15 STEVENSON J defensive rebound (4) | | | |
| 15:09 | 12 WRIGHTSELL JR. L 3pt FG fast break, jump shot made (19) | 64-53 | 11 | |
| 15:09 | 15 STEVENSON J assist (2) | | | |
| 14:57 | | | | 6 WRIGHT J 2pt FG in the paint, layup missed |
| 14:54 | 15 STEVENSON J defensive rebound (5) | | | |
| 14:54 | 15 STEVENSON J foul drawn (1) | | | 6 WRIGHT J foul personal (2 - 3) |
| 14:54 | | | | 3 COOK J substitution out |
| 14:54 | | | | 15 WARD T substitution in |
| 14:54 | Timeout media | | | |
| 14:35 | 12 WRIGHTSELL JR. L turnover lost ball (1) | | | 15 WARD T steal (1) |
| 14:21 | 12 WRIGHTSELL JR. L foul shooting (2 - 1) | | | 15 WARD T foul drawn (1) |
| 14:21 | | 64-54 | 10 | 15 WARD T free throw 1 - 3 made (1) |
| 14:21 | | | | 15 WARD T free throw 2 - 3 missed |
| 14:21 | | | | offensive dead ball rebound (4) |
| 14:21 | 1 SEARS M substitution out | | | |
| 14:21 | 3 GRIFFEN R substitution in | | | |
| 14:21 | | 64-55 | 9 | 15 WARD T free throw 3 - 3 made (2) |
| 14:13 | 3 GRIFFEN R turnover bad pass (1) | | | |
| 13:54 | | | | 15 WARD T 3pt FG from turnover, jump shot missed |
| 13:51 | | | | offensive rebound (23) |
| 13:46 | | 64-57 | 7 | 13 REED J 2pt FG from turnover second chance in the paint, dunk, made (4) |
| 13:46 | | | | 0 HANNIBAL T assist (1) |
| 13:22 | 23 PRINGLE N 2pt FG in the paint, dunk, blocked | | | |
| 13:22 | | | | 13 REED J block (2) |
| 13:17 | | | | 6 WRIGHT J defensive rebound (1) |
| 13:11 | | | | 0 HANNIBAL T 2pt FG in the paint, layup missed |
| 13:07 | | | | 9 BAKER W offensive rebound (2) |
| 13:06 | 55 ESTRADA A steal (2) | | | 9 BAKER W turnover bad pass (2) |
| 13:02 | 3 GRIFFEN R 3pt FG fast break from turnover, jump shot made (6) | 67-57 | 10 | |
| 13:02 | 55 ESTRADA A assist (6) | | | |
| 12:38 | | | | 13 REED J 2pt FG in the paint, layup missed |
| 12:35 | 3 GRIFFEN R defensive rebound (1) | | | |
| 12:32 | 3 GRIFFEN R 2pt FG in the paint, dunk, blocked | | | |
| 12:32 | | | | 6 WRIGHT J block (1) |
| 12:27 | 55 ESTRADA A offensive rebound (5) | | | |
| 12:25 | 55 ESTRADA A 2pt FG second chance in the paint, layup made (17) | 69-57 | 12 | |
| 12:25 | 55 ESTRADA A foul drawn (4) | | | 6 WRIGHT J foul shooting (3 - 4) |



LSU at Alabama

01/27/24 Coleman Coliseum, Tuscaloosa
2023-24 Men's Basketball

Game Time: 7:00 PM
Game Duration: 2:13
Attendance: 13,474

Officials: Doug Shows, Owen Shortt, Bharat Ramnanan

| Game Time | ALA | Score | Diff | LSU |
|-----------|--|--------------|-----------|---|
| 12:25 | 15 STEVENSON J substitution out | | | |
| 12:25 | 2 NELSON G substitution in | | | |
| 12:25 | 23 PRINGLE N substitution out | | | |
| 12:25 | 10 DIOUBATE M substitution in | | | |
| 12:25 | | | | 0 HANNIBAL T substitution out |
| 12:25 | | | | 9 BAKER W substitution out |
| 12:25 | | | | 13 REED J substitution out |
| 12:25 | | | | 2 WILLIAMS III M substitution in |
| 12:25 | | | | 12 DEAN H substitution in |
| 12:25 | | | | 20 FOUNTAIN D substitution in |
| 12:25 | 55 ESTRADA A free throw 1 - 1 made (18) | 70-57 | 13 | |
| 12:16 | | | | 6 WRIGHT J 3pt FG , jump shot missed |
| 12:14 | 3 GRIFFEN R defensive rebound (2) | | | |
| 12:10 | 3 GRIFFEN R turnover bad pass (2) | | | |
| 11:56 | | | | 6 WRIGHT J 2pt FG from turnover in the paint, layup missed |
| 11:53 | | | | 12 DEAN H offensive rebound (3) |
| 11:50 | | | | 15 WARD T 2pt FG from turnover second chance outside the paint, jump shot blocked |
| 11:50 | 10 DIOUBATE M block (1) | | | |
| 11:44 | 55 ESTRADA A defensive rebound (6) | | | |
| 11:44 | 10 DIOUBATE M 2pt FG fast break in the paint, dunk, made (4) | 72-57 | 15 | |
| 11:44 | 3 GRIFFEN R assist (4) | | | |
| 11:44 | | | | Timeout 30 Sec |
| 11:44 | 3 GRIFFEN R foul class A technical (4 - 2) | | | |
| 11:44 | 12 WRIGHTSELL JR. L substitution out | | | |
| 11:44 | 55 ESTRADA A substitution out | | | |
| 11:44 | 1 SEARS M substitution in | | | |
| 11:44 | 24 WALTERS S substitution in | | | |
| 11:44 | | | | 6 WRIGHT J substitution out |
| 11:44 | | | | 0 HANNIBAL T substitution in |
| 11:44 | | 72-58 | 14 | 2 WILLIAMS III M free throw 1 - 2 made (9) |
| 11:44 | | | | 2 WILLIAMS III M free throw 2 - 2 missed |
| 11:44 | | | | offensive dead ball rebound (5) |
| 11:31 | | | | 15 WARD T 2pt FG second chance in the paint, layup missed |
| 11:28 | 24 WALTERS S defensive rebound (3) | | | |
| 11:18 | 24 WALTERS S foul drawn (1) | | | 2 WILLIAMS III M foul personal (3 - 5) |
| 11:11 | 3 GRIFFEN R 3pt FG , jump shot made (9) | 75-58 | 17 | |
| 11:11 | 10 DIOUBATE M assist (1) | | | |
| 10:43 | | 75-61 | 14 | 20 FOUNTAIN D 3pt FG , jump shot made (9) |
| 10:43 | | | | 0 HANNIBAL T assist (2) |
| 10:28 | 1 SEARS M 2pt FG in the paint, layup missed | | | |
| 10:28 | offensive rebound (32) | | | |
| 10:28 | | | | 0 HANNIBAL T substitution out |
| 10:28 | | | | 2 WILLIAMS III M substitution out |
| 10:28 | | | | 12 DEAN H substitution out |
| 10:28 | | | | 3 COOK J substitution in |
| 10:28 | | | | 6 WRIGHT J substitution in |
| 10:28 | | | | 9 BAKER W substitution in |
| 10:17 | 1 SEARS M foul drawn (2) | | | 3 COOK J foul shooting (3 - 6) |



LSU at Alabama

01/27/24 Coleman Coliseum, Tuscaloosa
2023-24 Men's Basketball

Game Time: 7:00 PM
Game Duration: 2:13
Attendance: 13,474

Officials: Doug Shows, Owen Shortt, Bharat Ramnanan

| Game Time | ALA | Score | Diff | LSU |
|-----------|---|--------------|-----------|---|
| 10:17 | 1 SEARS M free throw 1 - 2 made (9) | 76-61 | 15 | |
| 10:17 | 3 GRIFFEN R substitution out | | | |
| 10:17 | 55 ESTRADA A substitution in | | | |
| 10:17 | 1 SEARS M free throw 2 - 2 made (10) | 77-61 | 16 | |
| 10:07 | | | | 9 BAKER W 3pt FG , jump shot missed |
| 10:04 | 2 NELSON G defensive rebound (5) | | | |
| 10:00 | 24 WALTERS S 2pt FG fast break in the paint, layup made (2) | 79-61 | 18 | |
| 09:49 | | 79-64 | 15 | 3 COOK J 3pt FG , jump shot made (11) |
| 09:39 | 1 SEARS M 2pt FG in the paint, layup made (12) | 81-64 | 17 | |
| 09:26 | 10 DIOUBATE M steal (1) | | | 6 WRIGHT J turnover lost ball (2) |
| 09:23 | 10 DIOUBATE M turnover bad pass (2) | | | |
| 09:10 | | 81-67 | 14 | 20 FOUNTAIN D 3pt FG from turnover, jump shot made (12) |
| 09:10 | | | | 6 WRIGHT J assist (5) |
| 09:01 | 1 SEARS M foul drawn (3) | | | 3 COOK J foul personal (4 - 7) |
| 09:01 | 1 SEARS M 1&1 free throw 1 made (13) | 82-67 | 15 | |
| 09:01 | | | | 15 WARD T substitution out |
| 09:01 | | | | 2 WILLIAMS III M substitution in |
| 09:01 | 1 SEARS M 1&1 free throw 2 made (14) | 83-67 | 16 | |
| 08:49 | | | | 3 COOK J 3pt FG , jump shot missed |
| 08:46 | 24 WALTERS S defensive rebound (4) | | | |
| 08:39 | 1 SEARS M foul drawn (4) | | | 2 WILLIAMS III M foul personal (4 - 8) |
| 08:39 | 1 SEARS M 1&1 free throw 1 made (15) | 84-67 | 17 | |
| 08:39 | 1 SEARS M 1&1 free throw 2 made (16) | 85-67 | 18 | |
| 08:24 | 10 DIOUBATE M foul shooting (1 - 3) | | | 9 BAKER W foul drawn (2) |
| 08:24 | | 85-68 | 17 | 9 BAKER W free throw 1 - 2 made (9) |
| 08:24 | 10 DIOUBATE M substitution out | | | |
| 08:24 | 12 WRIGHTSELL JR. L substitution in | | | |
| 08:24 | | | | 3 COOK J substitution out |
| 08:24 | | | | 0 HANNIBAL T substitution in |
| 08:24 | | 85-69 | 16 | 9 BAKER W free throw 2 - 2 made (10) |
| 08:24 | | | | 9 BAKER W substitution out |
| 08:24 | | | | 13 REED J substitution in |
| 08:15 | 2 NELSON G 2pt FG in the paint, dunk, made (11) | 87-69 | 18 | |
| 08:15 | 55 ESTRADA A assist (7) | | | |
| 08:15 | 2 NELSON G foul drawn (6) | | | 20 FOUNTAIN D foul shooting (1 - 9) |
| 08:15 | 24 WALTERS S substitution out | | | |
| 08:15 | 15 STEVENSON J substitution in | | | |
| 08:15 | 2 NELSON G free throw 1 - 1 made (12) | 88-69 | 19 | |
| 07:47 | 1 SEARS M steal (1) | | | 2 WILLIAMS III M turnover lost ball (2) |
| 07:43 | 1 SEARS M 2pt FG fast break from turnover in the paint, layup made (18) | 90-69 | 21 | |
| 07:43 | 1 SEARS M foul drawn (5) | | | 20 FOUNTAIN D foul shooting (2 - 10) |
| 07:43 | Timeout media | | | |
| 07:43 | 2 NELSON G substitution out | | | |
| 07:43 | 55 ESTRADA A substitution out | | | |
| 07:43 | 3 GRIFFEN R substitution in | | | |
| 07:43 | 23 PRINGLE N substitution in | | | |
| 07:43 | | | | 2 WILLIAMS III M substitution out |
| 07:43 | | | | 20 FOUNTAIN D substitution out |



LSU at Alabama

01/27/24 Coleman Coliseum, Tuscaloosa
2023-24 Men's Basketball

Game Time: 7:00 PM
Game Duration: 2:13
Attendance: 13,474

Officials: Doug Shows, Owen Shortt, Bharat Ramnaran

| Game Time | ALA | Score | Diff | LSU |
|-----------|---|--------------|-----------|---|
| 07:43 | | | | 9 BAKER W substitution in |
| 07:43 | | | | 15 WARD T substitution in |
| 07:43 | 1 SEARS M free throw fast break 1 - 1 made (19) | 91-69 | 22 | |
| 07:27 | 23 PRINGLE N foul personal (1 - 4) | | | 6 WRIGHT J foul drawn (2) |
| 07:20 | | 91-72 | 19 | 6 WRIGHT J 3pt FG , jump shot made (10) |
| 07:20 | | | | 15 WARD T assist (1) |
| 06:58 | 3 GRIFFEN R 3pt FG , jump shot made (12) | 94-72 | 22 | |
| 06:58 | 1 SEARS M assist (5) | | | |
| 06:48 | | | | 0 HANNIBAL T 2pt FG in the paint, layup missed |
| 06:45 | | | | 9 BAKER W offensive rebound (3) |
| 06:42 | | 94-75 | 19 | 13 REED J 3pt FG second chance, jump shot made (7) |
| 06:42 | | | | 9 BAKER W assist (1) |
| 06:21 | 15 STEVENSON J 3pt FG , jump shot missed | | | |
| 06:17 | | | | 15 WARD T defensive rebound (1) |
| 06:03 | 23 PRINGLE N foul shooting (2 - 5) | | | 0 HANNIBAL T foul drawn (5) |
| 06:03 | | | | 0 HANNIBAL T free throw 1 - 2 missed |
| 06:03 | | | | offensive dead ball rebound (6) |
| 06:03 | 1 SEARS M substitution out | | | |
| 06:03 | 55 ESTRADA A substitution in | | | |
| 06:03 | | | | 0 HANNIBAL T free throw 2 - 2 missed |
| 06:02 | 23 PRINGLE N defensive rebound (1) | | | |
| 05:52 | 55 ESTRADA A turnover bad pass (2) | | | 0 HANNIBAL T steal (3) |
| 05:43 | | | | 0 HANNIBAL T 2pt FG from turnover in the paint, layup blocked |
| 05:43 | 23 PRINGLE N block (1) | | | |
| 05:39 | 23 PRINGLE N defensive rebound (2) | | | |
| 05:38 | 23 PRINGLE N turnover bad pass (1) | | | 15 WARD T steal (2) |
| 05:34 | 3 GRIFFEN R foul personal (5 - 6) | | | 6 WRIGHT J foul drawn (3) |
| 05:34 | 3 GRIFFEN R substitution out | | | |
| 05:34 | 1 SEARS M substitution in | | | |
| 05:34 | | | | 0 HANNIBAL T substitution out |
| 05:34 | | | | 2 WILLIAMS III M substitution in |
| 05:32 | | | | 2 WILLIAMS III M 3pt FG from turnover, jump shot missed |
| 05:31 | defensive rebound (37) | | | |
| 05:12 | 1 SEARS M turnover travel (2) | | | |
| 05:12 | 15 STEVENSON J substitution out | | | |
| 05:12 | 2 NELSON G substitution in | | | |
| 04:57 | | | | 6 WRIGHT J 2pt FG from turnover outside the paint, jump shot missed |
| 04:54 | 1 SEARS M defensive rebound (3) | | | |
| 04:50 | 1 SEARS M foul drawn (6) | | | 6 WRIGHT J foul personal (4 - 11) |
| 04:50 | 1 SEARS M free throw fast break 1 - 2 made (20) | 95-75 | 20 | |
| 04:50 | 1 SEARS M free throw fast break 2 - 2 made (21) | 96-75 | 21 | |
| 04:35 | | | | 15 WARD T 3pt FG , jump shot missed |
| 04:33 | | | | 15 WARD T offensive rebound (2) |
| 04:24 | 12 WRIGHTSELL JR. L foul shooting (3 - 7) | | | 13 REED J foul drawn (1) |
| 04:24 | | 96-76 | 20 | 13 REED J free throw 1 - 2 made (8) |
| 04:24 | | 96-77 | 19 | 13 REED J free throw 2 - 2 made (9) |
| 04:12 | 1 SEARS M 3pt FG , jump shot missed | | | |
| 04:10 | | | | 15 WARD T defensive rebound (3) |



LSU at Alabama

01/27/24 Coleman Coliseum, Tuscaloosa
2023-24 Men's Basketball

Game Time: 7:00 PM
Game Duration: 2:13
Attendance: 13,474

Officials: Doug Shows, Owen Shortt, Bharat Ramnanan

| Game Time | ALA | Score | Diff | LSU |
|-----------|--|---------------|-----------|--|
| 03:50 | | | | 6 WRIGHT J 3pt FG , jump shot missed |
| 03:48 | 23 PRINGLE N defensive rebound (3) | | | |
| 03:44 | 55 ESTRADA A 2pt FG in the paint, layup missed | | | |
| 03:40 | 23 PRINGLE N offensive rebound (4) | | | |
| 03:40 | 23 PRINGLE N 2pt FG second chance in the paint, layup made (2) | 98-77 | 21 | |
| 03:30 | Timeout media | | | |
| 03:30 | 1 SEARS M substitution out | | | |
| 03:30 | 2 NELSON G substitution out | | | |
| 03:30 | 12 WRIGHTSELL JR. L substitution out | | | |
| 03:30 | 23 PRINGLE N substitution out | | | |
| 03:30 | 4 COSBY JR. D substitution in | | | |
| 03:30 | 10 DIOUBATE M substitution in | | | |
| 03:30 | 15 STEVENSON J substitution in | | | |
| 03:30 | 24 WALTERS S substitution in | | | |
| 03:30 | | | | 6 WRIGHT J substitution out |
| 03:30 | | | | 5 WILKINSON M substitution in |
| 03:16 | | 98-79 | 19 | 2 WILLIAMS III M 2pt FG in the paint, layup made (11) |
| 03:16 | 10 DIOUBATE M foul shooting (2 - 8) | | | 2 WILLIAMS III M foul drawn (1) |
| 03:16 | | 98-80 | 18 | 2 WILLIAMS III M free throw 1 - 1 made (12) |
| 03:03 | 10 DIOUBATE M 2pt FG in the paint, layup made (6) | 100-80 | 20 | |
| 03:03 | 24 WALTERS S assist (1) | | | |
| 02:49 | 4 COSBY JR. D steal (1) | | | 2 WILLIAMS III M turnover lost ball (3) |
| 02:40 | 55 ESTRADA A turnover bad pass (3) | | | 15 WARD T steal (3) |
| 02:26 | | | | 9 BAKER W 2pt FG from turnover in the paint, hook shot missed |
| 02:23 | | | | 13 REED J offensive rebound (4) |
| 02:21 | | | | 13 REED J 2pt FG from turnover second chance in the paint, layup blocked |
| 02:21 | 24 WALTERS S block (1) | | | |
| 02:17 | 24 WALTERS S defensive rebound (5) | | | |
| 02:11 | 15 STEVENSON J foul offensive (1 - 9) | | | 15 WARD T foul drawn (2) |
| 02:11 | 15 STEVENSON J turnover offensive (1) | | | |
| 02:11 | 15 STEVENSON J substitution out | | | |
| 02:11 | 55 ESTRADA A substitution out | | | |
| 02:11 | 31 SCHARNOWSKI M substitution in | | | |
| 02:11 | 32 SPEARS K substitution in | | | |
| 02:11 | | | | 13 REED J substitution out |
| 02:11 | | | | 20 FOUNTAIN D substitution in |
| 01:58 | | 100-82 | 18 | 9 BAKER W 2pt FG from turnover in the paint, dunk, made (12) |
| 01:58 | | | | 15 WARD T assist (2) |
| 01:48 | 10 DIOUBATE M 2pt FG in the paint, layup made (8) | 102-82 | 20 | |
| 01:48 | 10 DIOUBATE M foul drawn (2) | | | 15 WARD T foul shooting (3 - 12) |
| 01:48 | 10 DIOUBATE M free throw 1 - 1 missed | | | |
| 01:47 | | | | 20 FOUNTAIN D defensive rebound (6) |
| 01:41 | 31 SCHARNOWSKI M foul shooting (1 - 10) | | | 2 WILLIAMS III M foul drawn (2) |
| 01:41 | | 102-83 | 19 | 2 WILLIAMS III M free throw fast break 1 - 2 made (13) |
| 01:41 | | 102-84 | 18 | 2 WILLIAMS III M free throw fast break 2 - 2 made (14) |
| 01:31 | 24 WALTERS S 3pt FG , jump shot made (5) | 105-84 | 21 | |
| 01:31 | 10 DIOUBATE M assist (2) | | | |
| 01:18 | | | | 2 WILLIAMS III M 2pt FG in the paint, layup missed |



LSU at Alabama

01/27/24 Coleman Coliseum, Tuscaloosa
2023-24 Men's Basketball

Game Time: 7:00 PM
Game Duration: 2:13
Attendance: 13,474

Officials: Doug Shows, Owen Shortt, Bharat Ramnanan

| Game Time | ALA | Score | Diff | LSU |
|-----------------------|--|---------------|-----------|--|
| 01:15 | | | | 9 BAKER W offensive rebound (4) |
| 01:13 | | 105-86 | 19 | 20 FOUNTAIN D 2pt FG second chance in the paint, layup made (14) |
| 00:54 | 24 WALTERS S foul drawn (2) | | | 5 WILKINSON M foul shooting (2 - 13) |
| 00:54 | 24 WALTERS S free throw 1 - 2 made (6) | 106-86 | 20 | |
| 00:54 | 24 WALTERS S free throw 2 - 2 made (7) | 107-86 | 21 | |
| 00:43 | | | | 20 FOUNTAIN D 2pt FG in the paint, layup missed |
| 00:42 | defensive rebound (42) | | | |
| 00:21 | 31 SCHARNOWSKI M 2pt FG in the paint, layup made (2) | 109-86 | 23 | |
| 00:09 | | 109-88 | 21 | 2 WILLIAMS III M 2pt FG in the paint, layup made (16) |
| END OF GAME | | | | |
| ALA 109-88 LSU | | | | |



LSU at Alabama

01/27/24 Coleman Coliseum, Tuscaloosa
2023-24 Men's Basketball

Game Time: 7:00 PM
Game Duration: 2:13
Attendance: 13,474

Officials: Doug Shows, Owen Shortt, Bharat Ramnanan

LSU - 44

| NO. | Name | Min | FG | 3P | FT | Rebounds | | | Fouls | | TP | AS | TO | ST | Blocks | | +/- |
|---------------|-------------------|---------|-------|------|-------|----------|----|-----|-------|----|----|----|----|----|--------|----|-----|
| | | | M-A | M-A | M-A | OR | DR | TOT | PF | FD | | | | | BS | BA | |
| 13 | Jalen Reed | F 13:48 | 3-5 | 1-1 | 2-2 | 1 | 1 | 2 | 0 | 1 | 9 | 0 | 0 | 0 | 2 | 1 | -10 |
| 9 | Will Baker | C 17:22 | 3-6 | 1-3 | 2-2 | 3 | 0 | 3 | 0 | 1 | 9 | 1 | 1 | 0 | 0 | 0 | -8 |
| 2 | Mike Williams III | G 10:41 | 2-4 | 0-1 | 4-5 | 0 | 1 | 1 | 2 | 2 | 8 | 0 | 2 | 0 | 0 | 0 | -8 |
| 3 | Jalen Cook | G 07:10 | 1-5 | 1-3 | 0-0 | 0 | 1 | 1 | 3 | 0 | 3 | 0 | 0 | 0 | 0 | 1 | -8 |
| 6 | Jordan Wright | G 15:14 | 2-7 | 1-3 | 0-0 | 0 | 1 | 1 | 4 | 2 | 5 | 3 | 1 | 0 | 1 | 0 | -16 |
| 0 | Trae Hannibal | 09:49 | 0-3 | 0-0 | 0-2 | 0 | 0 | 0 | 0 | 1 | 0 | 2 | 1 | 2 | 0 | 1 | -9 |
| 15 | Tyrell Ward | 13:36 | 0-4 | 0-2 | 2-3 | 1 | 2 | 3 | 1 | 2 | 2 | 2 | 0 | 3 | 0 | 1 | -4 |
| 12 | Hunter Dean | 01:57 | 0-0 | 0-0 | 0-0 | 1 | 0 | 1 | 0 | 0 | 0 | 0 | 0 | 0 | 0 | 0 | -2 |
| 20 | Derek Fountain | 06:53 | 3-4 | 2-2 | 0-0 | 0 | 1 | 1 | 2 | 0 | 8 | 0 | 0 | 0 | 0 | 0 | -10 |
| 5 | Mwani Wilkinson | 03:30 | 0-0 | 0-0 | 0-0 | 0 | 0 | 0 | 1 | 0 | 0 | 0 | 0 | 0 | 0 | 0 | 0 |
| Team | | | | | | 1 | 0 | 1 | | | 0 | | 0 | | | | |
| Totals | | | 14-38 | 6-15 | 10-14 | 7 | 7 | 14 | 13 | 9 | 44 | 8 | 5 | 5 | 3 | 4 | -15 |

| Shooting By Period | | |
|---------------------|-------|-------|
| 2 nd FG% | 14-38 | 36.8% |
| 3PT% | 6-15 | 40.0% |
| FT% | 10-14 | 71.4% |
| GM FG% | 14-38 | 36.8% |
| 3PT% | 6-15 | 40.0% |
| FT% | 10-14 | 71.4% |

Dead Ball Rebounds: 3, 0

Technical Fouls::NONE

Alabama - 59

| NO. | Name | Min | FG | 3P | FT | Rebounds | | | Fouls | | TP | AS | TO | ST | Blocks | | +/- |
|---------------|------------------------|---------|-------|------|-------|----------|----|-----|-------|----|----|----|----|----|--------|----|-----|
| | | | M-A | M-A | M-A | OR | DR | TOT | PF | FD | | | | | BS | BA | |
| 2 | Grant Nelson | F 10:24 | 1-1 | 0-0 | 1-1 | 0 | 2 | 2 | 0 | 3 | 3 | 1 | 0 | 0 | 1 | 0 | 11 |
| 1 | Mark Sears | G 13:24 | 3-5 | 0-1 | 9-9 | 1 | 1 | 2 | 0 | 5 | 15 | 3 | 2 | 1 | 0 | 0 | 10 |
| 3 | Rylan Griffen | G 08:05 | 3-4 | 3-3 | 0-0 | 0 | 2 | 2 | 2 | 0 | 9 | 1 | 2 | 0 | 0 | 1 | 1 |
| 12 | Latrell Wrightsell Jr. | G 13:10 | 2-4 | 1-3 | 0-0 | 0 | 0 | 0 | 2 | 0 | 5 | 0 | 1 | 1 | 0 | 0 | 13 |
| 55 | Aaron Estrada | G 14:42 | 4-6 | 1-1 | 1-1 | 1 | 2 | 3 | 0 | 1 | 10 | 2 | 2 | 1 | 0 | 1 | 16 |
| 15 | Jarin Stevenson | 10:05 | 0-2 | 0-2 | 0-0 | 0 | 2 | 2 | 1 | 1 | 0 | 1 | 1 | 0 | 0 | 0 | 8 |
| 23 | Nick Pringle | 07:48 | 1-2 | 0-0 | 0-0 | 1 | 3 | 4 | 2 | 0 | 2 | 0 | 1 | 0 | 1 | 1 | 6 |
| 10 | Mouhamed Dioubate | 07:31 | 3-3 | 0-0 | 0-1 | 0 | 0 | 0 | 2 | 1 | 6 | 2 | 1 | 1 | 1 | 0 | 5 |
| 24 | Sam Walters | 06:59 | 2-2 | 1-1 | 2-2 | 0 | 3 | 3 | 0 | 2 | 7 | 1 | 0 | 0 | 1 | 0 | 3 |
| 4 | Davin Cosby Jr. | 03:30 | 0-0 | 0-0 | 0-0 | 0 | 0 | 0 | 0 | 0 | 0 | 0 | 0 | 1 | 0 | 0 | 0 |
| 31 | Max Scharnowski | 02:11 | 1-1 | 0-0 | 0-0 | 0 | 0 | 0 | 1 | 0 | 2 | 0 | 0 | 0 | 0 | 0 | 1 |
| 32 | Kai Spears | 02:11 | 0-0 | 0-0 | 0-0 | 0 | 0 | 0 | 0 | 0 | 0 | 0 | 0 | 0 | 0 | 0 | 1 |
| Team | | | | | | 1 | 3 | 4 | | | 0 | | 0 | | | | |
| Totals | | | 20-30 | 6-11 | 13-14 | 4 | 18 | 22 | 10 | 13 | 59 | 11 | 10 | 5 | 4 | 3 | 15 |

| Shooting By Period | | |
|---------------------|-------|-------|
| 2 nd FG% | 20-30 | 66.7% |
| 3PT% | 6-11 | 54.5% |
| FT% | 13-14 | 92.9% |
| GM FG% | 20-30 | 66.7% |
| 3PT% | 6-11 | 54.5% |
| FT% | 13-14 | 92.9% |

Dead Ball Rebounds: 0, 0

Technical Fouls:Griffen 2nd11:44

| | LSU | ALA |
|------------------|---------------------------|---------------------------|
| Biggest lead | 0 (1 st 20:00) | 23 (2 nd 0:21) |
| Best Scoring Run | 4(2 nd 13:46) | 8(2 nd 11:44) |
| Lead Changes | 0 | |
| Times Tied | 0 | |
| Time with Lead | 00:00 | 19:32 |

| Points from | LSU | ALA |
|---------------|-----|-----|
| Turnovers | 9 | 8 |
| Paint | 16 | 28 |
| Second Chance | 9 | 10 |
| Fast Breaks | 2 | 17 |
| Bench | 10 | 17 |

| | Period by Period Scoring | | |
|-----|--------------------------|-----|-----|
| | 1st | 2nd | TOT |
| LSU | 44 | 44 | 88 |
| ALA | 50 | 59 | 109 |



LSU at Alabama

01/27/24 Coleman Coliseum, Tuscaloosa
2023-24 Men's Basketball

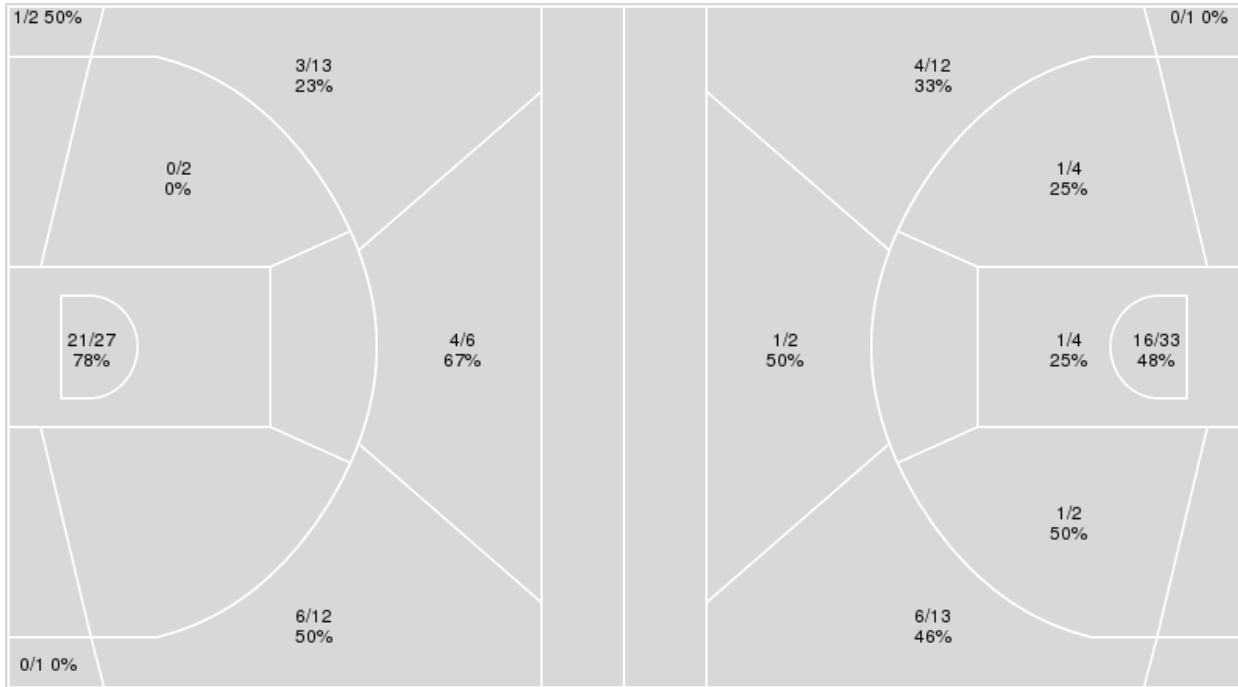
Officials: Doug Shows, Owen Shortt, Bharat Ramnanan

{ Players => All; } FG Types => All; Results => All;

{ Players => 0, 1, 2, 3, 5, 6, 9, 10, 11, 12, 13, 14, 15, 20, 25; } FG Types
=> All; Results => All;

Alabama

LSU



| Alabama | M/A | % |
|-------------|-------|----|
| Field Goals | 35/63 | 56 |
| 2 Points | 21/29 | 72 |
| 3 Points | 14/34 | 41 |
| Free Throws | 25/28 | 89 |

| LSU | M/A | % |
|-------------|-------|----|
| Field Goals | 30/71 | 42 |
| 2 Points | 19/43 | 44 |
| 3 Points | 11/28 | 39 |
| Free Throws | 17/27 | 63 |



LSU at Alabama

01/27/24 Coleman Coliseum, Tuscaloosa
2023-24 Men's Basketball

Game Time: 7:00 PM
Game Duration: 2:13
Attendance: 13,474

Officials: Doug Shows, Owen Shortt, Bharat Ramnanan

LSU

| No | Name | Mins | | Score | | Points Diff | | Points per Min | | Assists | | Rebounds | | Steals | | Turnovers | |
|----|-------------------|-------|-------|---------|---------|-------------|-----|----------------|------|---------|-----|----------|-----|--------|-----|-----------|-----|
| | | On | Off | On | Off | On | Off | On | Off | On | Off | On | Off | On | Off | On | Off |
| 0 | Trae Hannibal | 20:20 | 19:40 | 43 - 54 | 45 - 55 | -11 | -10 | 2.11 | 2.29 | 7 | 6 | 14 | 19 | 5 | 2 | 5 | 5 |
| 2 | Mike Williams III | 23:28 | 16:32 | 53 - 62 | 35 - 47 | -9 | -12 | 2.26 | 2.12 | 7 | 6 | 22 | 11 | 2 | 5 | 5 | 5 |
| 3 | Jalen Cook | 19:53 | 20:07 | 43 - 57 | 45 - 52 | -14 | -7 | 2.16 | 2.24 | 7 | 6 | 17 | 16 | 2 | 5 | 5 | 5 |
| 5 | Mwani Wilkinson | 10:32 | 29:28 | 24 - 30 | 64 - 79 | -6 | -15 | 2.28 | 2.17 | 2 | 11 | 7 | 26 | 3 | 4 | 4 | 6 |
| 6 | Jordan Wright | 30:54 | 09:06 | 64 - 86 | 24 - 23 | -22 | 1 | 2.07 | 2.64 | 11 | 2 | 24 | 9 | 6 | 1 | 8 | 2 |
| 9 | Will Baker | 21:24 | 18:36 | 51 - 65 | 37 - 44 | -14 | -7 | 2.38 | 1.99 | 10 | 3 | 16 | 17 | 5 | 2 | 5 | 5 |
| 12 | Hunter Dean | 15:11 | 24:49 | 32 - 32 | 56 - 77 | 0 | -21 | 2.11 | 2.26 | 2 | 11 | 15 | 18 | 1 | 6 | 3 | 7 |
| 13 | Jalen Reed | 20:00 | 20:00 | 41 - 51 | 47 - 58 | -10 | -11 | 2.05 | 2.35 | 9 | 4 | 18 | 15 | 5 | 2 | 5 | 5 |
| 15 | Tyrell Ward | 19:15 | 20:45 | 43 - 48 | 45 - 61 | -5 | -16 | 2.23 | 2.17 | 6 | 7 | 19 | 14 | 4 | 3 | 4 | 6 |
| 20 | Derek Fountain | 19:03 | 20:57 | 46 - 60 | 42 - 49 | -14 | -7 | 2.41 | 2.00 | 4 | 9 | 13 | 20 | 2 | 5 | 6 | 4 |

Alabama

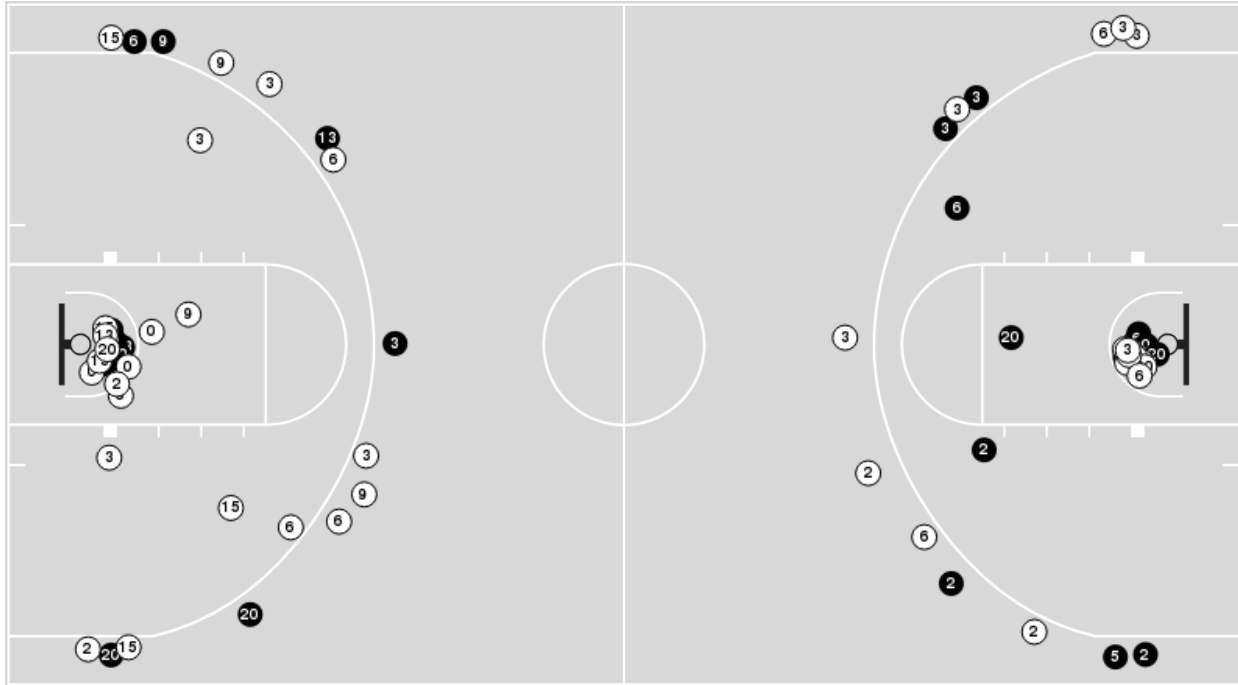
| No | Name | Mins | | Score | | Points Diff | | Points per Min | | Assists | | Rebounds | | Steals | | Turnovers | |
|----|------------------------|-------|-------|---------|----------|-------------|-----|----------------|------|---------|-----|----------|-----|--------|-----|-----------|-----|
| | | On | Off | On | Off | On | Off | On | Off | On | Off | On | Off | On | Off | On | Off |
| 1 | Mark Sears | 29:23 | 10:37 | 81 - 65 | 28 - 23 | 16 | 5 | 2.76 | 2.64 | 17 | 6 | 29 | 13 | 5 | 3 | 6 | 6 |
| 2 | Grant Nelson | 24:00 | 16:00 | 73 - 54 | 36 - 34 | 19 | 2 | 3.04 | 2.25 | 14 | 9 | 27 | 15 | 5 | 3 | 3 | 9 |
| 3 | Rylan Griffen | 17:44 | 22:16 | 44 - 40 | 65 - 48 | 4 | 17 | 2.48 | 2.92 | 11 | 12 | 18 | 24 | 2 | 6 | 4 | 8 |
| 4 | Davin Cosby Jr. | 07:19 | 32:41 | 20 - 19 | 89 - 69 | 1 | 20 | 2.73 | 2.72 | 4 | 19 | 7 | 35 | 2 | 6 | 2 | 10 |
| 10 | Mouhamed Dioubate | 14:24 | 25:36 | 42 - 38 | 67 - 50 | 4 | 17 | 2.92 | 2.62 | 8 | 15 | 13 | 29 | 2 | 6 | 6 | 6 |
| 11 | Mohamed Wague | 03:48 | 36:12 | 4 - 10 | 105 - 78 | -6 | 27 | 1.05 | 2.90 | 2 | 21 | 3 | 39 | 0 | 8 | 0 | 12 |
| 12 | Latrell Wrightsell Jr. | 29:09 | 10:51 | 76 - 57 | 33 - 31 | 19 | 2 | 2.61 | 3.04 | 18 | 5 | 31 | 11 | 5 | 3 | 9 | 3 |
| 15 | Jarin Stevenson | 20:12 | 19:48 | 51 - 36 | 58 - 52 | 15 | 6 | 2.52 | 2.93 | 12 | 11 | 24 | 18 | 7 | 1 | 9 | 3 |
| 23 | Nick Pringle | 07:48 | 32:12 | 18 - 12 | 91 - 76 | 6 | 15 | 2.31 | 2.83 | 3 | 20 | 10 | 32 | 2 | 6 | 6 | 6 |
| 24 | Sam Walters | 10:57 | 29:03 | 30 - 33 | 79 - 55 | -3 | 24 | 2.74 | 2.72 | 6 | 17 | 10 | 32 | 2 | 6 | 3 | 9 |
| 31 | Max Scharnowski | 02:11 | 37:49 | 9 - 8 | 100 - 80 | 1 | 20 | 4.12 | 2.64 | 1 | 22 | 1 | 41 | 0 | 8 | 0 | 12 |
| 32 | Kai Spears | 02:11 | 37:49 | 9 - 8 | 100 - 80 | 1 | 20 | 4.12 | 2.64 | 1 | 22 | 1 | 41 | 0 | 8 | 0 | 12 |
| 55 | Aaron Estrada | 30:54 | 09:06 | 88 - 60 | 21 - 28 | 28 | -7 | 2.85 | 2.31 | 18 | 5 | 36 | 6 | 8 | 0 | 12 | 0 |



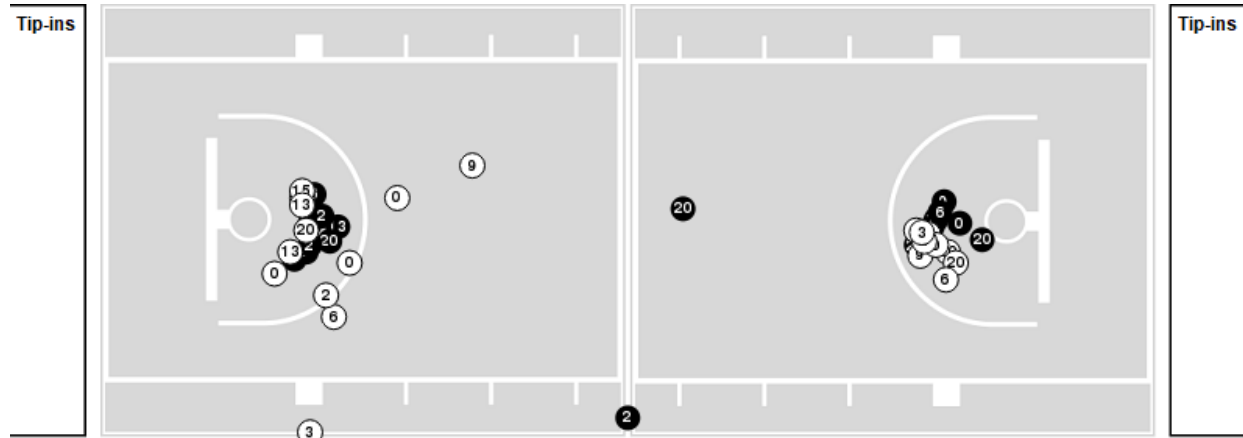
Players => 0, 1, 2, 3, 5, 6, 9, 10, 11, 12, 13, 14, 15, 20, 25FG Types=>AllResults=>All

LSU

All Field Goals



Blow Up Chart



● Made ○ Missed N - Player Number

| LSU | M/A | % |
|-------------|-------|----|
| Field Goals | 30/71 | 42 |
| 2 Points | 19/43 | 44 |
| 3 Points | 11/28 | 39 |
| Free Throws | 17/27 | 63 |

| LSU | M/A | % |
|----------------------|--------------|-----|
| Points in the Paint | 34 (17 / 37) | 46 |
| Fast Break Points | 4 (3/3) | 100 |
| Second Chance Points | 18 (9/15) | 60 |
| Effective FG% | 50 | |



LSU at Alabama

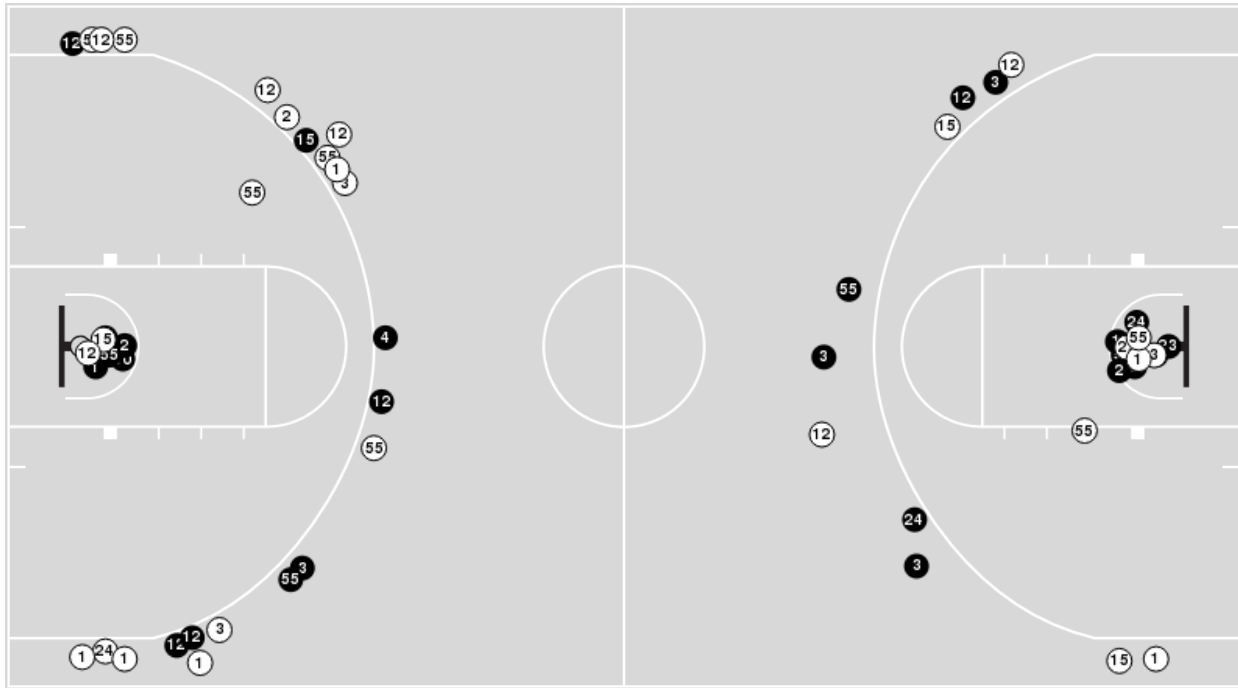
01/27/24 Coleman Coliseum, Tuscaloosa
2023-24 Men's Basketball

Officials: Doug Shows, Owen Shortt, Bharat Ramnanan

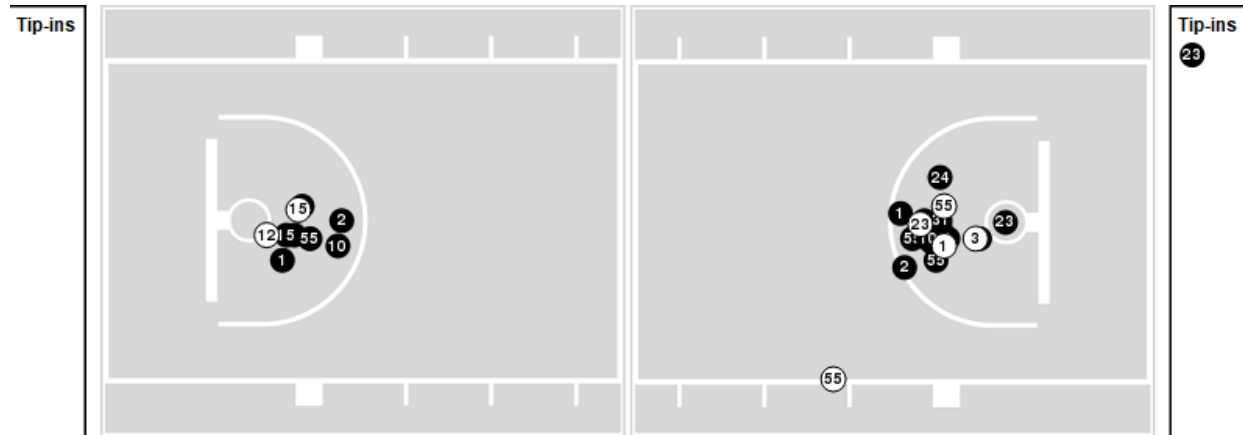
Players => AllFG Types=>AllResults=>All

Alabama

All Field Goals



Blow Up Chart



● Made ○ Missed N - Player Number

| Alabama | M/A | % |
|-------------|-------|----|
| Field Goals | 35/63 | 56 |
| 2 Points | 21/29 | 72 |
| 3 Points | 14/34 | 41 |
| Free Throws | 25/28 | 89 |

| Alabama | M/A | % |
|----------------------|--------------|----|
| Points in the Paint | 42 (21 / 27) | 78 |
| Fast Break Points | 22 (12/13) | 92 |
| Second Chance Points | 16 (10/13) | 77 |
| Effective FG% | 67 | |



LSU at Alabama

01/27/24 Coleman Coliseum, Tuscaloosa
2023-24 Men's Basketball

Game Time: 7:00 PM
Game Duration: 2:13
Attendance: 13,474

Officials: Doug Shows, Owen Shortt, Bharat Ramnanan

LSU

| Lineup | Quarter On | Time On | Quarter Off | Time Off | Time on Court | Score | Score Diff | Reb | Stl | Tov | Ass | PPP |
|--|------------|---------|-------------|----------|---------------|-------|------------|-----|-----|-----|-----|--------|
| 2- Williams III M/ 3- Cook J/ 6- Wright J/ 9- Baker W/ 13- Reed J/ | 1 | 20:00 | 1 | 16:04 | 03:56 | 10-15 | -5 | 3 | 0 | 1 | 3 | 1.3441 |
| 0- Hannibal T/ 2- Williams III M/ 6- Wright J/ 9- Baker W/ 13- Reed J/ | 1 | 16:04 | 1 | 16:04 | 00:00 | 1-0 | 1 | 0 | 0 | 0 | 0 | 2.2727 |
| 0- Hannibal T/ 2- Williams III M/ 6- Wright J/ 12- Dean H/ 13- Reed J/ | 1 | 16:04 | 1 | 13:48 | 02:16 | 6-2 | 4 | 4 | 0 | 0 | 1 | 1.5000 |
| 0- Hannibal T/ 3- Cook J/ 12- Dean H/ 15- Ward T/ 20- Fountain D/ | 1 | 13:48 | 1 | 12:25 | 01:23 | 3-3 | 0 | 1 | 0 | 0 | 0 | 1.5957 |
| 0- Hannibal T/ 3- Cook J/ 9- Baker W/ 15- Ward T/ 20- Fountain D/ | 1 | 12:25 | 1 | 12:19 | 00:06 | 0-2 | -2 | 0 | 0 | 0 | 0 | 0.0000 |
| 0- Hannibal T/ 3- Cook J/ 12- Dean H/ 15- Ward T/ 20- Fountain D/ | 1 | 12:19 | 1 | 12:19 | 00:00 | 0-1 | -1 | 0 | 0 | 0 | 0 | 0.0000 |
| 2- Williams III M/ 3- Cook J/ 12- Dean H/ 15- Ward T/ 20- Fountain D/ | 1 | 12:19 | 1 | 09:47 | 02:32 | 6-3 | 3 | 5 | 0 | 1 | 0 | 1.0000 |
| 0- Hannibal T/ 3- Cook J/ 6- Wright J/ 12- Dean H/ 15- Ward T/ | 1 | 09:47 | 1 | 08:28 | 01:19 | 1-2 | -1 | 2 | 0 | 0 | 0 | 1.1364 |
| 0- Hannibal T/ 3- Cook J/ 5- Wilkinson M/ 6- Wright J/ 20- Fountain D/ | 1 | 08:28 | 1 | 08:02 | 00:26 | 2-0 | 2 | 0 | 0 | 0 | 0 | 1.3889 |
| 2- Williams III M/ 3- Cook J/ 5- Wilkinson M/ 6- Wright J/ 20- Fountain D/ | 1 | 08:02 | 1 | 05:44 | 02:18 | 3-7 | -4 | 2 | 1 | 1 | 1 | 0.7500 |
| 0- Hannibal T/ 2- Williams III M/ 5- Wilkinson M/ 12- Dean H/ 15- Ward T/ | 1 | 05:44 | 1 | 05:25 | 00:19 | 0-0 | 0 | 0 | 0 | 0 | 0 | 0.0000 |
| 0- Hannibal T/ 2- Williams III M/ 5- Wilkinson M/ 6- Wright J/ 12- Dean H/ | 1 | 05:25 | 1 | 05:25 | 00:00 | 0-1 | -1 | 0 | 0 | 0 | 0 | 0.0000 |
| 0- Hannibal T/ 2- Williams III M/ 6- Wright J/ 12- Dean H/ 20- Fountain D/ | 1 | 05:25 | 1 | 03:59 | 01:26 | 4-3 | 1 | 0 | 0 | 0 | 0 | 2.0000 |
| 0- Hannibal T/ 5- Wilkinson M/ 6- Wright J/ 12- Dean H/ 20- Fountain D/ | 1 | 03:59 | 1 | 00:42 | 03:16 | 6-11 | -5 | 1 | 1 | 2 | 0 | 0.9036 |
| 3- Cook J/ 5- Wilkinson M/ 6- Wright J/ 12- Dean H/ 20- Fountain D/ | 1 | 00:42 | 2 | 20:00 | 00:42 | 2-0 | 2 | 1 | 0 | 0 | 0 | 2.0000 |
| 2- Williams III M/ 3- Cook J/ 6- Wright J/ 9- Baker W/ 13- Reed J/ | 2 | 20:00 | 2 | 18:08 | 01:52 | 4-2 | 2 | 2 | 0 | 0 | 0 | 1.3333 |
| 0- Hannibal T/ 3- Cook J/ 6- Wright J/ 9- Baker W/ 13- Reed J/ | 2 | 18:08 | 2 | 14:54 | 03:14 | 5-12 | -7 | 1 | 1 | 1 | 2 | 0.7143 |
| 0- Hannibal T/ 6- Wright J/ 9- Baker W/ 13- Reed J/ 15- Ward T/ | 2 | 14:54 | 2 | 12:25 | 02:29 | 4-5 | -1 | 3 | 1 | 1 | 1 | 0.9259 |
| 2- Williams III M/ 6- Wright J/ 12- Dean H/ 15- Ward T/ 20- Fountain D/ | 2 | 12:25 | 2 | 11:44 | 00:41 | 0-3 | -3 | 1 | 0 | 0 | 0 | 0.0000 |
| 0- Hannibal T/ 2- Williams III M/ 12- Dean H/ 15- Ward T/ 20- Fountain D/ | 2 | 11:44 | 2 | 10:28 | 01:16 | 4-3 | 1 | 0 | 0 | 0 | 1 | 1.3889 |
| 3- Cook J/ 6- Wright J/ 9- Baker W/ 15- Ward T/ 20- Fountain D/ | 2 | 10:28 | 2 | 09:01 | 01:27 | 6-7 | -1 | 0 | 0 | 1 | 1 | 1.5000 |
| 2- Williams III M/ 3- Cook J/ 6- Wright J/ 9- Baker W/ 20- Fountain D/ | 2 | 09:01 | 2 | 08:24 | 00:37 | 1-3 | -2 | 0 | 0 | 0 | 0 | 0.6944 |
| 0- Hannibal T/ 2- Williams III M/ 6- Wright J/ 9- Baker W/ 20- Fountain D/ | 2 | 08:24 | 2 | 08:24 | 00:00 | 1-0 | 1 | 0 | 0 | 0 | 0 | 2.2727 |
| 0- Hannibal T/ 2- Williams III M/ 6- Wright J/ 13- Reed J/ 20- Fountain D/ | 2 | 08:24 | 2 | 07:43 | 00:41 | 0-5 | -5 | 0 | 0 | 1 | 0 | 0.0000 |
| 0- Hannibal T/ 6- Wright J/ 9- Baker W/ 13- Reed J/ 15- Ward T/ | 2 | 07:43 | 2 | 05:34 | 02:09 | 6-4 | 2 | 2 | 2 | 0 | 2 | 1.5464 |
| 2- Williams III M/ 6- Wright J/ 9- Baker W/ 13- Reed J/ 15- Ward T/ | 2 | 05:34 | 2 | 03:30 | 02:04 | 2-4 | -2 | 2 | 0 | 0 | 0 | 0.5155 |
| 2- Williams III M/ 5- Wilkinson M/ 9- Baker W/ 13- Reed J/ 15- Ward T/ | 2 | 03:30 | 2 | 02:11 | 01:19 | 3-2 | 1 | 1 | 1 | 1 | 0 | 0.8721 |
| 2- Williams III M/ 5- Wilkinson M/ 9- Baker W/ 15- Ward T/ 20- Fountain D/ | 2 | 02:11 | 2 | 00:00 | 02:11 | 8-9 | -1 | 2 | 0 | 0 | 1 | 1.6393 |



LSU at Alabama

01/27/24 Coleman Coliseum, Tuscaloosa
2023-24 Men's Basketball

Game Time: 7:00 PM
Game Duration: 2:13
Attendance: 13,474

Officials: Doug Shows, Owen Shortt, Bharat Ramnanan

Alabama

| Lineup | Quarter On | Time On | Quarter Off | Time Off | Time on Court | Score | Score Diff | Reb | Stl | Tov | Ass | PPP |
|--|------------|---------|-------------|----------|---------------|-------|------------|-----|-----|-----|-----|--------|
| 1- Sears M/ 2- Nelson G/ 3- Griffen R/ 12- Wrightsell Jr. L/ 55- Estrada A/ | 1 | 20:00 | 1 | 16:09 | 03:51 | 15-10 | 5 | 2 | 0 | 0 | 4 | 2.1802 |
| 1- Sears M/ 2- Nelson G/ 3- Griffen R/ 10- Dioubate M/ 12- Wrightsell Jr. L/ | 1 | 16:09 | 1 | 16:09 | 00:00 | 0-0 | 0 | 0 | 0 | 0 | 0 | 0.0000 |
| 1- Sears M/ 3- Griffen R/ 10- Dioubate M/ 11- Wague M/ 12- Wrightsell Jr. L/ | 1 | 16:09 | 1 | 15:49 | 00:20 | 0-1 | -1 | 0 | 0 | 0 | 0 | 0.0000 |
| 1- Sears M/ 10- Dioubate M/ 11- Wague M/ 12- Wrightsell Jr. L/ 24- Walters S/ | 1 | 15:49 | 1 | 13:48 | 02:01 | 2-6 | -4 | 1 | 0 | 0 | 1 | 0.6667 |
| 2- Nelson G/ 3- Griffen R/ 15- Stevenson J/ 24- Walters S/ 55- Estrada A/ | 1 | 13:48 | 1 | 13:15 | 00:33 | 0-1 | -1 | 0 | 0 | 0 | 0 | 0.0000 |
| 2- Nelson G/ 3- Griffen R/ 4- Cosby Jr. D/ 15- Stevenson J/ 55- Estrada A/ | 1 | 13:15 | 1 | 09:47 | 03:28 | 9-8 | 1 | 5 | 1 | 0 | 2 | 1.2295 |
| 1- Sears M/ 3- Griffen R/ 4- Cosby Jr. D/ 11- Wague M/ 12- Wrightsell Jr. L/ | 1 | 09:47 | 1 | 09:26 | 00:21 | 0-0 | 0 | 0 | 0 | 0 | 0 | 0.0000 |
| 1- Sears M/ 3- Griffen R/ 11- Wague M/ 12- Wrightsell Jr. L/ 24- Walters S/ | 1 | 09:26 | 1 | 08:20 | 01:06 | 2-3 | -1 | 2 | 0 | 0 | 1 | 2.0000 |
| 1- Sears M/ 12- Wrightsell Jr. L/ 15- Stevenson J/ 24- Walters S/ 55- Estrada A/ | 1 | 08:20 | 1 | 08:02 | 00:18 | 0-0 | 0 | 1 | 0 | 0 | 0 | 0.0000 |
| 1- Sears M/ 10- Dioubate M/ 12- Wrightsell Jr. L/ 15- Stevenson J/ 55- Estrada A/ | 1 | 08:02 | 1 | 05:44 | 02:18 | 7-3 | 4 | 2 | 0 | 1 | 2 | 1.4344 |
| 1- Sears M/ 2- Nelson G/ 12- Wrightsell Jr. L/ 15- Stevenson J/ 55- Estrada A/ | 1 | 05:44 | 1 | 03:59 | 01:45 | 4-4 | 0 | 4 | 0 | 0 | 0 | 2.1277 |
| 1- Sears M/ 2- Nelson G/ 10- Dioubate M/ 12- Wrightsell Jr. L/ 55- Estrada A/ | 1 | 03:59 | 1 | 01:45 | 02:14 | 6-6 | 0 | 2 | 0 | 1 | 1 | 1.3889 |
| 1- Sears M/ 2- Nelson G/ 12- Wrightsell Jr. L/ 15- Stevenson J/ 55- Estrada A/ | 1 | 01:45 | 2 | 20:00 | 01:45 | 5-2 | 3 | 1 | 2 | 0 | 1 | 2.0492 |
| 1- Sears M/ 2- Nelson G/ 3- Griffen R/ 12- Wrightsell Jr. L/ 55- Estrada A/ | 2 | 20:00 | 2 | 18:08 | 01:52 | 2-4 | -2 | 1 | 0 | 0 | 0 | 0.6667 |
| 1- Sears M/ 2- Nelson G/ 12- Wrightsell Jr. L/ 15- Stevenson J/ 55- Estrada A/ | 2 | 18:08 | 2 | 16:00 | 02:08 | 7-5 | 2 | 3 | 0 | 0 | 3 | 1.7500 |
| 1- Sears M/ 12- Wrightsell Jr. L/ 15- Stevenson J/ 23- Pringle N/ 55- Estrada A/ | 2 | 16:00 | 2 | 14:21 | 01:39 | 5-1 | 4 | 2 | 1 | 2 | 1 | 1.2500 |
| 3- Griffen R/ 12- Wrightsell Jr. L/ 15- Stevenson J/ 23- Pringle N/ 55- Estrada A/ | 2 | 14:21 | 2 | 12:25 | 01:56 | 5-3 | 2 | 2 | 1 | 1 | 1 | 1.2500 |
| 2- Nelson G/ 3- Griffen R/ 10- Dioubate M/ 12- Wrightsell Jr. L/ 55- Estrada A/ | 2 | 12:25 | 2 | 11:44 | 00:41 | 3-0 | 3 | 2 | 0 | 1 | 1 | 1.2295 |
| 1- Sears M/ 2- Nelson G/ 3- Griffen R/ 10- Dioubate M/ 24- Walters S/ | 2 | 11:44 | 2 | 10:17 | 01:27 | 4-4 | 0 | 2 | 0 | 0 | 1 | 2.7778 |
| 1- Sears M/ 2- Nelson G/ 10- Dioubate M/ 24- Walters S/ 55- Estrada A/ | 2 | 10:17 | 2 | 08:24 | 01:53 | 9-7 | 2 | 2 | 1 | 1 | 0 | 1.7308 |
| 1- Sears M/ 2- Nelson G/ 12- Wrightsell Jr. L/ 24- Walters S/ 55- Estrada A/ | 2 | 08:24 | 2 | 08:15 | 00:09 | 2-1 | 1 | 0 | 0 | 0 | 1 | 2.0000 |
| 1- Sears M/ 2- Nelson G/ 12- Wrightsell Jr. L/ 15- Stevenson J/ 55- Estrada A/ | 2 | 08:15 | 2 | 07:43 | 00:32 | 3-0 | 3 | 0 | 1 | 0 | 0 | 2.0833 |
| 1- Sears M/ 3- Griffen R/ 12- Wrightsell Jr. L/ 15- Stevenson J/ 23- Pringle N/ | 2 | 07:43 | 2 | 06:03 | 01:40 | 4-6 | -2 | 0 | 0 | 0 | 1 | 1.6393 |
| 3- Griffen R/ 12- Wrightsell Jr. L/ 15- Stevenson J/ 23- Pringle N/ 55- Estrada A/ | 2 | 06:03 | 2 | 05:34 | 00:29 | 0-0 | 0 | 2 | 0 | 2 | 0 | 0.0000 |
| 1- Sears M/ 12- Wrightsell Jr. L/ 15- Stevenson J/ 23- Pringle N/ 55- Estrada A/ | 2 | 05:34 | 2 | 05:12 | 00:22 | 0-0 | 0 | 1 | 0 | 1 | 0 | 0.0000 |
| 1- Sears M/ 2- Nelson G/ 12- Wrightsell Jr. L/ 23- Pringle N/ 55- Estrada A/ | 2 | 05:12 | 2 | 03:30 | 01:42 | 4-2 | 2 | 3 | 0 | 0 | 0 | 1.3889 |
| 4- Cosby Jr. D/ 10- Dioubate M/ 15- Stevenson J/ 24- Walters S/ 55- Estrada A/ | 2 | 03:30 | 2 | 02:11 | 01:19 | 2-3 | -1 | 1 | 1 | 2 | 1 | 0.6667 |
| 4- Cosby Jr. D/ 10- Dioubate M/ 24- Walters S/ 31- Scharnowski M/ 32- Spears K/ | 2 | 02:11 | 2 | 00:00 | 02:11 | 9-8 | 1 | 1 | 0 | 0 | 1 | 2.0833 |



LSU at Alabama

01/27/24 Coleman Coliseum, Tuscaloosa
2023-24 Men's Basketball

Game Time: 7:00 PM
Game Duration: 2:13
Attendance: 13,474

Officials: Doug Shows, Owen Shortt, Bharat Ramnanan

LSU

| Lineup | Time | Score | Score Diff | Pts/Min | Reb | Stl | Tov | Ass | PPP |
|--|-------|-------|------------|---------|-----|-----|-----|-----|--------|
| 2- Williams III M/ 3- Cook J/ 6- Wright J/ 9- Baker W/ 13- Reed J/ | 05:48 | 14-17 | -3 | 2.4138 | 5 | 0 | 1 | 3 | 1.3410 |
| 0- Hannibal T/ 6- Wright J/ 9- Baker W/ 13- Reed J/ 15- Ward T/ | 04:38 | 10-9 | 1 | 2.1583 | 5 | 3 | 1 | 3 | 1.2195 |
| 0- Hannibal T/ 5- Wilkinson M/ 6- Wright J/ 12- Dean H/ 20- Fountain D/ | 03:16 | 6-11 | -5 | 1.8339 | 1 | 1 | 2 | 0 | 0.9036 |
| 0- Hannibal T/ 3- Cook J/ 6- Wright J/ 9- Baker W/ 13- Reed J/ | 03:14 | 5-12 | -7 | 1.5464 | 1 | 1 | 1 | 2 | 0.7143 |
| 2- Williams III M/ 3- Cook J/ 12- Dean H/ 15- Ward T/ 20- Fountain D/ | 02:32 | 6-3 | 3 | 2.3684 | 5 | 0 | 1 | 0 | 1.0000 |
| 2- Williams III M/ 3- Cook J/ 5- Wilkinson M/ 6- Wright J/ 20- Fountain D/ | 02:18 | 3-7 | -4 | 1.3043 | 2 | 1 | 1 | 1 | 0.7500 |
| 0- Hannibal T/ 2- Williams III M/ 6- Wright J/ 12- Dean H/ 13- Reed J/ | 02:16 | 6-2 | 4 | 2.6471 | 4 | 0 | 0 | 1 | 1.5000 |
| 2- Williams III M/ 5- Wilkinson M/ 9- Baker W/ 15- Ward T/ 20- Fountain D/ | 02:11 | 8-9 | -1 | 3.6641 | 2 | 0 | 0 | 1 | 1.6393 |
| 2- Williams III M/ 6- Wright J/ 9- Baker W/ 13- Reed J/ 15- Ward T/ | 02:04 | 2-4 | -2 | 0.9677 | 2 | 0 | 0 | 0 | 0.5155 |
| 3- Cook J/ 6- Wright J/ 9- Baker W/ 15- Ward T/ 20- Fountain D/ | 01:27 | 6-7 | -1 | 4.1379 | 0 | 0 | 1 | 1 | 1.5000 |
| 0- Hannibal T/ 2- Williams III M/ 6- Wright J/ 12- Dean H/ 20- Fountain D/ | 01:26 | 4-3 | 1 | 2.7907 | 0 | 0 | 0 | 0 | 2.0000 |
| 0- Hannibal T/ 3- Cook J/ 12- Dean H/ 15- Ward T/ 20- Fountain D/ | 01:23 | 3-4 | -1 | 2.1687 | 1 | 0 | 0 | 0 | 1.5957 |
| 0- Hannibal T/ 3- Cook J/ 6- Wright J/ 12- Dean H/ 15- Ward T/ | 01:19 | 1-2 | -1 | 0.7595 | 2 | 0 | 0 | 0 | 1.1364 |
| 2- Williams III M/ 5- Wilkinson M/ 9- Baker W/ 13- Reed J/ 15- Ward T/ | 01:19 | 3-2 | 1 | 2.2785 | 1 | 1 | 1 | 0 | 0.8721 |
| 0- Hannibal T/ 2- Williams III M/ 12- Dean H/ 15- Ward T/ 20- Fountain D/ | 01:16 | 4-3 | 1 | 3.1579 | 0 | 0 | 0 | 1 | 1.3889 |
| 3- Cook J/ 5- Wilkinson M/ 6- Wright J/ 12- Dean H/ 20- Fountain D/ | 00:42 | 2-0 | 2 | 2.8103 | 1 | 0 | 0 | 0 | 2.0000 |
| 2- Williams III M/ 6- Wright J/ 12- Dean H/ 15- Ward T/ 20- Fountain D/ | 00:41 | 0-3 | -3 | 0.0000 | 1 | 0 | 0 | 0 | 0.0000 |
| 0- Hannibal T/ 2- Williams III M/ 6- Wright J/ 13- Reed J/ 20- Fountain D/ | 00:41 | 0-5 | -5 | 0.0000 | 0 | 0 | 1 | 0 | 0.0000 |
| 2- Williams III M/ 3- Cook J/ 6- Wright J/ 9- Baker W/ 20- Fountain D/ | 00:37 | 1-3 | -2 | 1.6216 | 0 | 0 | 0 | 0 | 0.6944 |
| 0- Hannibal T/ 3- Cook J/ 5- Wilkinson M/ 6- Wright J/ 20- Fountain D/ | 00:26 | 2-0 | 2 | 4.6154 | 0 | 0 | 0 | 0 | 1.3889 |
| 0- Hannibal T/ 2- Williams III M/ 5- Wilkinson M/ 12- Dean H/ 15- Ward T/ | 00:19 | 0-0 | 0 | 0.0000 | 0 | 0 | 0 | 0 | 0.0000 |
| 0- Hannibal T/ 3- Cook J/ 9- Baker W/ 15- Ward T/ 20- Fountain D/ | 00:06 | 0-2 | -2 | 0.0000 | 0 | 0 | 0 | 0 | 0.0000 |
| 0- Hannibal T/ 2- Williams III M/ 6- Wright J/ 9- Baker W/ 13- Reed J/ | 00:00 | 1-0 | 1 | ∞ | 0 | 0 | 0 | 0 | 2.2727 |
| 0- Hannibal T/ 2- Williams III M/ 5- Wilkinson M/ 6- Wright J/ 12- Dean H/ | 00:00 | 0-1 | -1 | NaN | 0 | 0 | 0 | 0 | 0.0000 |
| 0- Hannibal T/ 2- Williams III M/ 6- Wright J/ 9- Baker W/ 20- Fountain D/ | 00:00 | 1-0 | 1 | ∞ | 0 | 0 | 0 | 0 | 2.2727 |



LSU at Alabama

01/27/24 Coleman Coliseum, Tuscaloosa
2023-24 Men's Basketball

Game Time: 7:00 PM
Game Duration: 2:13
Attendance: 13,474

Officials: Doug Shows, Owen Shortt, Bharat Ramnanan

Alabama

| Lineup | Time | Score | Score Diff | Pts/Min | Reb | Stl | Tov | Ass | PPP |
|--|-------|-------|------------|---------|-----|-----|-----|-----|--------|
| 1- Sears M/ 2- Nelson G/ 12- Wrightsell Jr. L/ 15- Stevenson J/ 55- Estrada A/ | 06:10 | 19-11 | 8 | 3.0811 | 8 | 3 | 0 | 4 | 1.9467 |
| 1- Sears M/ 2- Nelson G/ 3- Griffen R/ 12- Wrightsell Jr. L/ 55- Estrada A/ | 05:43 | 17-14 | 3 | 2.9738 | 3 | 0 | 0 | 4 | 1.7206 |
| 2- Nelson G/ 3- Griffen R/ 4- Cosby Jr. D/ 15- Stevenson J/ 55- Estrada A/ | 03:28 | 9-8 | 1 | 2.5962 | 5 | 1 | 0 | 2 | 1.2295 |
| 3- Griffen R/ 12- Wrightsell Jr. L/ 15- Stevenson J/ 23- Pringle N/ 55- Estrada A/ | 02:25 | 5-3 | 2 | 2.0690 | 4 | 1 | 3 | 1 | 0.8333 |
| 1- Sears M/ 10- Dioubate M/ 12- Wrightsell Jr. L/ 15- Stevenson J/ 55- Estrada A/ | 02:18 | 7-3 | 4 | 3.0435 | 2 | 0 | 1 | 2 | 1.4344 |
| 1- Sears M/ 2- Nelson G/ 10- Dioubate M/ 12- Wrightsell Jr. L/ 55- Estrada A/ | 02:14 | 6-6 | 0 | 2.6866 | 2 | 0 | 1 | 1 | 1.3889 |
| 4- Cosby Jr. D/ 10- Dioubate M/ 24- Walters S/ 31- Scharnowski M/ 32- Spears K/ | 02:11 | 9-8 | 1 | 4.1221 | 1 | 0 | 0 | 1 | 2.0833 |
| 1- Sears M/ 10- Dioubate M/ 11- Wague M/ 12- Wrightsell Jr. L/ 24- Walters S/ | 02:01 | 2-6 | -4 | 0.9917 | 1 | 0 | 0 | 1 | 0.6667 |
| 1- Sears M/ 12- Wrightsell Jr. L/ 15- Stevenson J/ 23- Pringle N/ 55- Estrada A/ | 02:01 | 5-1 | 4 | 2.4793 | 3 | 1 | 3 | 1 | 1.0000 |
| 1- Sears M/ 2- Nelson G/ 10- Dioubate M/ 24- Walters S/ 55- Estrada A/ | 01:53 | 9-7 | 2 | 4.7788 | 2 | 1 | 1 | 0 | 1.7308 |
| 1- Sears M/ 2- Nelson G/ 12- Wrightsell Jr. L/ 23- Pringle N/ 55- Estrada A/ | 01:42 | 4-2 | 2 | 2.3529 | 3 | 0 | 0 | 0 | 1.3889 |
| 1- Sears M/ 3- Griffen R/ 12- Wrightsell Jr. L/ 15- Stevenson J/ 23- Pringle N/ | 01:40 | 4-6 | -2 | 2.4000 | 0 | 0 | 0 | 1 | 1.6393 |
| 1- Sears M/ 2- Nelson G/ 3- Griffen R/ 10- Dioubate M/ 24- Walters S/ | 01:27 | 4-4 | 0 | 2.7586 | 2 | 0 | 0 | 1 | 2.7778 |
| 4- Cosby Jr. D/ 10- Dioubate M/ 15- Stevenson J/ 24- Walters S/ 55- Estrada A/ | 01:19 | 2-3 | -1 | 1.5190 | 1 | 1 | 2 | 1 | 0.6667 |
| 1- Sears M/ 3- Griffen R/ 11- Wague M/ 12- Wrightsell Jr. L/ 24- Walters S/ | 01:06 | 2-3 | -1 | 1.8182 | 2 | 0 | 0 | 1 | 2.0000 |
| 2- Nelson G/ 3- Griffen R/ 10- Dioubate M/ 12- Wrightsell Jr. L/ 55- Estrada A/ | 00:41 | 3-0 | 3 | 4.3902 | 2 | 0 | 1 | 1 | 1.2295 |
| 2- Nelson G/ 3- Griffen R/ 15- Stevenson J/ 24- Walters S/ 55- Estrada A/ | 00:33 | 0-1 | -1 | 0.0000 | 0 | 0 | 0 | 0 | 0.0000 |
| 1- Sears M/ 3- Griffen R/ 4- Cosby Jr. D/ 11- Wague M/ 12- Wrightsell Jr. L/ | 00:21 | 0-0 | 0 | 0.0000 | 0 | 0 | 0 | 0 | 0.0000 |
| 1- Sears M/ 3- Griffen R/ 10- Dioubate M/ 11- Wague M/ 12- Wrightsell Jr. L/ | 00:20 | 0-1 | -1 | 0.0000 | 0 | 0 | 0 | 0 | 0.0000 |
| 1- Sears M/ 12- Wrightsell Jr. L/ 15- Stevenson J/ 24- Walters S/ 55- Estrada A/ | 00:18 | 0-0 | 0 | 0.0000 | 1 | 0 | 0 | 0 | 0.0000 |
| 1- Sears M/ 2- Nelson G/ 12- Wrightsell Jr. L/ 24- Walters S/ 55- Estrada A/ | 00:09 | 2-1 | 1 | 13.3333 | 0 | 0 | 0 | 1 | 2.0000 |
| 1- Sears M/ 2- Nelson G/ 3- Griffen R/ 10- Dioubate M/ 12- Wrightsell Jr. L/ | 00:00 | 0-0 | 0 | NaN | 0 | 0 | 0 | 0 | 0.0000 |