



LSU at Florida

03/04/23 Exactech Arena at Stephen C. O'Connell Center, Gainesville  
2022-23 Men's Basketball

Game Time: 6:00 PM  
Game Duration: 2:05  
Attendance: 10,280

Officials: Pat Adams, Byron Jarrett, Patrick Evans

LSU - 67 Record: 13-18 (2-16)

NO.	Name	F	Min	FG	3P	FT	Rebounds			Fouls		TP	AS	TO	ST	Blocks		+/-
				M-A	M-A	M-A	OR	DR	TOT	PF	FD					BS	BA	
12	KJ Williams	F	29:45	6-13	0-2	7-10	4	5	9	4	6	19	1	1	1	0	0	-7
15	Tyrell Ward	F	19:51	0-2	0-2	0-2	0	1	1	2	1	0	1	0	0	0	0	-10
20	Derek Fountain	F	32:44	6-10	1-2	0-0	5	7	12	2	1	13	0	2	0	1	1	-9
1	Cam Hayes	G	28:37	2-8	0-2	4-4	0	2	2	3	3	8	1	1	2	0	0	-6
44	Adam Miller	G	33:17	4-10	2-6	0-0	0	4	4	1	0	10	2	3	1	0	0	-12
3	Justice Hill		19:17	1-4	0-2	0-0	0	0	0	0	0	2	0	0	0	0	1	-1
13	Jalen Reed		18:51	2-7	0-0	2-3	2	5	7	4	2	6	3	4	0	0	0	-6
0	Trae Hannibal		17:38	2-6	0-0	5-6	3	2	5	2	6	9	1	1	1	0	2	-9
Team							3	0	3			0		1				
<b>Totals</b>				23-60	3-16	18-25	17	26	43	18	19	67	9	13	5	1	4	-12

Shooting By Period		
1st FG%	12-30	40.0%
3PT%	2-11	18.2%
FT%	7-11	63.6%
2nd FG%	11-30	36.7%
3PT%	1-5	20.0%
FT%	11-14	78.6%
GM FG%	23-60	38.3%
3PT%	3-16	18.8%
FT%	18-25	72.0%

Dead Ball Rebounds: 3, 0

Technical Fouls::NONE

Florida - 79 Record: 16-15 (9-9)

NO.	Name	C	Min	FG	3P	FT	Rebounds			Fouls		TP	AS	TO	ST	Blocks		+/-
				M-A	M-A	M-A	OR	DR	TOT	PF	FD					BS	BA	
33	Jason Jitoboh	C	21:20	2-5	0-0	2-2	3	1	4	2	1	6	1	2	0	1	0	6
0	Myreon Jones	G	18:22	1-2	1-2	0-0	0	3	3	1	0	3	1	0	2	0	0	-11
5	Will Richard	G	35:16	7-10	3-6	1-1	1	5	6	4	1	18	2	0	2	0	0	11
11	Kyle Lofton	G	30:58	4-11	2-5	6-8	1	4	5	2	5	16	5	1	2	1	0	10
24	Riley Kugel	G	31:56	8-14	4-7	1-1	1	2	3	2	3	21	1	4	0	0	1	10
3	Alex Fudge		18:47	2-7	0-3	2-2	3	3	6	5	3	6	1	1	0	1	0	8
10	Denzel Aberdeen		09:08	0-1	0-0	0-0	0	2	2	1	1	0	1	0	0	0	0	2
14	Kowacie Reeves		20:10	4-10	0-2	0-2	2	2	4	0	2	8	0	0	1	0	0	15
4	Niels Lane		12:37	0-1	0-0	1-4	0	0	0	2	2	1	1	0	0	1	0	10
13	Aleks Szymczyk		00:42	0-0	0-0	0-0	0	0	0	0	0	0	0	0	0	0	0	-1
20	Jack May		00:22	0-0	0-0	0-0	0	0	0	0	0	0	0	0	0	0	0	0
21	Alex Klatsky		00:22	0-0	0-0	0-0	0	0	0	0	0	0	0	0	0	0	0	0
Team							0	2	2			0		0				
<b>Totals</b>				28-61	10-25	13-20	11	24	35	19	18	79	13	8	7	4	1	12

Shooting By Period		
1st FG%	12-31	38.7%
3PT%	3-11	27.3%
FT%	2-4	50%
2nd FG%	16-30	53.3%
3PT%	7-14	50.0%
FT%	11-16	68.8%
GM FG%	28-61	45.9%
3PT%	10-25	40.0%
FT%	13-20	65.0%

Dead Ball Rebounds: 3, 0

Technical Fouls::NONE

	LSU	UF
Biggest lead	12 (2 <sup>nd</sup> 15:45)	14 (2 <sup>nd</sup> 1:45)
Best Scoring Run	9(1 <sup>st</sup> 5:04)	7(2 <sup>nd</sup> 5:04)
Lead Changes	6	
Times Tied	7	
Time with Lead	21:20	13:17

Points from	LSU	UF
Turnovers	4	13
Paint	38	36
Second Chance	17	19
Fast Breaks	7	11
Bench	17	15

	Period by Period Scoring		
	1st	2nd	TOT
LSU	33	34	67
UF	29	50	79



**Period 1**

**Quarter Starters:**

<b>UF</b>	0 Jones M	5 Richard W	11 Lofton K	24 Kugel R	33 Jitoboh J
<b>LSU</b>	1 Hayes C	12 Williams K	15 Ward T	20 Fountain D	44 Miller A

Game Time	UF	Score	Diff	LSU
20:00	33 JITOBOH J jumpball won			20 FOUNTAIN D jumpball lost
19:31	33 JITOBOH J foul drawn (1)			12 WILLIAMS K foul shooting (1 - 1)
19:31	33 JITOBOH J free throw 1 - 2 made (1)	<b>1-0</b>	<b>1</b>	
19:31	33 JITOBOH J free throw 2 - 2 made (2)	<b>2-0</b>	<b>2</b>	
19:13	24 KUGEL R foul shooting (1 - 1)			15 WARD T foul drawn (1)
19:13				15 WARD T free throw 1 - 2 missed
19:13				offensive dead ball rebound (1)
19:13				15 WARD T free throw 2 - 2 missed
19:12	33 JITOBOH J defensive rebound (1)			
18:57	24 KUGEL R turnover bad pass (1)			1 HAYES C steal (1)
18:53				1 HAYES C 2pt FG from turnover in the paint, driving layup missed
18:49	5 RICHARD W defensive rebound (1)			
18:40	24 KUGEL R 3pt FG , jump shot missed			
18:35	33 JITOBOH J offensive rebound (2)			
18:33	5 RICHARD W 3pt FG second chance, jump shot made (3)	<b>5-0</b>	<b>5</b>	
18:33	11 LOFTON K assist (1)			
18:13	5 RICHARD W steal (1)			20 FOUNTAIN D turnover lost ball (1)
17:57	11 LOFTON K 3pt FG from turnover, jump shot missed			
17:53				20 FOUNTAIN D defensive rebound (1)
17:49	11 LOFTON K foul personal (1 - 2)			12 WILLIAMS K foul drawn (1)
17:41		<b>5-3</b>	<b>2</b>	20 FOUNTAIN D 3pt FG , jump shot made (3)
17:41				44 MILLER A assist (1)
17:17	24 KUGEL R 2pt FG in the paint, jump shot made (2)	<b>7-3</b>	<b>4</b>	
17:01	5 RICHARD W steal (2)			44 MILLER A turnover bad pass (1)
16:46	33 JITOBOH J turnover travel (1)			
16:46				1 HAYES C substitution out
16:46				3 HILL J substitution in
16:32	0 JONES M steal (1)			20 FOUNTAIN D turnover bad pass (2)
16:18	33 JITOBOH J 2pt FG from turnover in the paint, jump shot missed			
16:16				20 FOUNTAIN D defensive rebound (2)
16:04		<b>7-5</b>	<b>2</b>	44 MILLER A 2pt FG in the paint, driving layup made (2)
15:40	24 KUGEL R 3pt FG , jump shot missed			
15:36				20 FOUNTAIN D defensive rebound (3)
15:25				44 MILLER A 2pt FG outside the paint, jump shot missed
15:22	11 LOFTON K defensive rebound (1)			
15:10	0 JONES M 3pt FG , jump shot missed			
15:06				44 MILLER A defensive rebound (1)
15:02		<b>7-7</b>	<b>0</b>	44 MILLER A 2pt FG fast break in the paint, driving layup made (4)
14:39	24 KUGEL R turnover out of bounds (2)			
14:39	Timeout media			
14:39	0 JONES M substitution out			



**LSU at Florida**

03/04/23 Exactech Arena at Stephen C. O'Connell Center, Gainesville  
2022-23 Men's Basketball

**Game Time:** 6:00 PM  
**Game Duration:** 2:05  
**Attendance:** 10,280

**Officials:** Pat Adams, Byron Jarrett, Patrick Evans

Game Time	UF	Score	Diff	LSU
14:39	24 KUGEL R substitution out			
14:39	33 JITOBOH J substitution out			
14:39	3 FUDGE A substitution in			
14:39	10 ABERDEEN D substitution in			
14:39	14 REEVES K substitution in			
14:39				15 WARD T substitution out
14:39				13 REED J substitution in
14:26				12 WILLIAMS K 2pt FG from turnover outside the paint, jump shot missed
14:24	3 FUDGE A defensive rebound (1)			
14:04	3 FUDGE A 3pt FG , jump shot missed			
14:01				20 FOUNTAIN D defensive rebound (4)
13:45		<b>7-9</b>	<b>-2</b>	12 WILLIAMS K 2pt FG in the paint, layup made (2)
13:45				13 REED J assist (1)
13:29	11 LOFTON K 2pt FG in the paint, driving layup missed			
13:26				13 REED J defensive rebound (1)
13:22				12 WILLIAMS K 3pt FG , jump shot missed
13:19	11 LOFTON K defensive rebound (2)			
13:19	11 LOFTON K turnover out of bounds (1)			
13:19				20 FOUNTAIN D substitution out
13:19				0 HANNIBAL T substitution in
13:13				44 MILLER A 3pt FG from turnover, jump shot missed
13:10	10 ABERDEEN D defensive rebound (1)			
12:59	14 REEVES K 3pt FG , jump shot missed			
12:54				12 WILLIAMS K defensive rebound (1)
12:43				44 MILLER A 3pt FG , jump shot missed
12:39	10 ABERDEEN D defensive rebound (2)			
12:36	5 RICHARD W 2pt FG fast break in the paint, dunk, made (5)	<b>9-9</b>	<b>0</b>	
12:36	10 ABERDEEN D assist (1)			
12:21	3 FUDGE A foul drawn (1)			0 HANNIBAL T foul offensive (1 - 2)
12:21				0 HANNIBAL T turnover offensive (1)
12:21	5 RICHARD W substitution out			
12:21	24 KUGEL R substitution in			
12:21				12 WILLIAMS K substitution out
12:21				44 MILLER A substitution out
12:21				1 HAYES C substitution in
12:21				20 FOUNTAIN D substitution in
11:54	3 FUDGE A 2pt FG from turnover outside the paint, jump shot missed			
11:51				20 FOUNTAIN D defensive rebound (5)
11:27				3 HILL J 2pt FG in the paint, layup blocked
11:27	11 LOFTON K block (1)			
11:27				offensive rebound (9)
11:27	Timeout media			
11:27	11 LOFTON K substitution out			
11:27	0 JONES M substitution in			
11:27				3 HILL J substitution out
11:27				15 WARD T substitution in
11:27	10 ABERDEEN D foul personal (1 - 3)			1 HAYES C foul drawn (1)



**LSU at Florida**

03/04/23 Exactech Arena at Stephen C. O'Connell Center, Gainesville  
2022-23 Men's Basketball

**Game Time:** 6:00 PM  
**Game Duration:** 2:05  
**Attendance:** 10,280

**Officials:** Pat Adams, Byron Jarrett, Patrick Evans

Game Time	UF	Score	Diff	LSU
11:14		<b>9-11</b>	<b>-2</b>	0 HANNIBAL T 2pt FG second chance in the paint, driving layup made (2)
10:49	14 REEVES K foul drawn (1)			20 FOUNTAIN D foul shooting (1 - 3)
10:49	14 REEVES K free throw 1 - 2 missed			
10:49	offensive dead ball rebound (1)			
10:49	14 REEVES K free throw 2 - 2 missed			
10:48				13 REED J defensive rebound (2)
10:23		<b>9-13</b>	<b>-4</b>	20 FOUNTAIN D 2pt FG outside the paint, jump shot made (5)
10:23				0 HANNIBAL T assist (1)
10:00	10 ABERDEEN D 2pt FG in the paint, driving layup missed			
09:58	3 FUDGE A offensive rebound (2)			
09:57	3 FUDGE A 2pt FG second chance in the paint, layup missed			
09:57	3 FUDGE A offensive rebound (3)			
09:55	3 FUDGE A 2pt FG second chance in the paint, layup made (2)	<b>11-13</b>	<b>-2</b>	
09:38	14 REEVES K foul drawn (2)			13 REED J foul offensive (1 - 4)
09:38				13 REED J turnover offensive (1)
09:38	3 FUDGE A substitution out			
09:38	10 ABERDEEN D substitution out			
09:38	14 REEVES K substitution out			
09:38	4 LANE N substitution in			
09:38	5 RICHARD W substitution in			
09:38	33 JITOBOH J substitution in			
09:38				13 REED J substitution out
09:38				12 WILLIAMS K substitution in
09:25	24 KUGEL R 2pt FG from turnover in the paint, driving layup missed			
09:21	33 JITOBOH J offensive rebound (3)			
09:21	33 JITOBOH J 2pt FG from turnover second chance in the paint, layup made (4)	<b>13-13</b>	<b>0</b>	
09:09				15 WARD T 3pt FG , jump shot missed
09:07				12 WILLIAMS K offensive rebound (2)
09:05				1 HAYES C 3pt FG second chance, jump shot missed
09:01				0 HANNIBAL T offensive rebound (1)
08:50				12 WILLIAMS K 3pt FG second chance, jump shot missed
08:46	0 JONES M defensive rebound (1)			
08:34	33 JITOBOH J turnover lost ball (2)			0 HANNIBAL T steal (1)
08:25				15 WARD T 3pt FG from turnover, jump shot missed
08:22	24 KUGEL R defensive rebound (1)			
08:21	24 KUGEL R foul drawn (1)			15 WARD T foul personal (1 - 5)
08:21				0 HANNIBAL T substitution out
08:21				15 WARD T substitution out
08:21				20 FOUNTAIN D substitution out
08:21				3 HILL J substitution in
08:21				13 REED J substitution in
08:21				44 MILLER A substitution in
08:17	33 JITOBOH J 2pt FG in the paint, dunk, made (6)	<b>15-13</b>	<b>2</b>	
08:17	0 JONES M assist (1)			
07:54	Timeout media			
07:44		<b>15-15</b>	<b>0</b>	3 HILL J 2pt FG in the paint, driving layup made (2)
07:24	5 RICHARD W 3pt FG , jump shot made (8)	<b>18-15</b>	<b>3</b>	



**LSU at Florida**

03/04/23 Exactech Arena at Stephen C. O'Connell Center, Gainesville  
2022-23 Men's Basketball

**Game Time:** 6:00 PM  
**Game Duration:** 2:05  
**Attendance:** 10,280

**Officials:** Pat Adams, Byron Jarrett, Patrick Evans

Game Time	UF	Score	Diff	LSU
07:24	4 LANE N assist (1)			
06:56				13 REED J 2pt FG in the paint, layup missed
06:53				12 WILLIAMS K offensive rebound (3)
06:50		<b>18-17</b>	<b>1</b>	12 WILLIAMS K 2pt FG second chance in the paint, hook shot made (4)
06:25	24 KUGEL R 2pt FG in the paint, driving layup missed			
06:21				44 MILLER A defensive rebound (2)
06:16		<b>18-19</b>	<b>-1</b>	13 REED J 2pt FG in the paint, layup made (2)
06:16	24 KUGEL R foul shooting (2 - 4)			13 REED J foul drawn (1)
06:16	24 KUGEL R substitution out			
06:16	11 LOFTON K substitution in			
06:16		<b>18-20</b>	<b>-2</b>	13 REED J free throw 1 - 1 made (3)
05:55	4 LANE N 2pt FG in the paint, layup missed			
05:53				12 WILLIAMS K defensive rebound (4)
05:48	4 LANE N substitution out			
05:48	3 FUDGE A substitution in			
05:41		<b>18-23</b>	<b>-5</b>	44 MILLER A 3pt FG , jump shot made (7)
05:41				12 WILLIAMS K assist (1)
05:11	33 JITOBOH J 2pt FG in the paint, jump shot missed			
05:09				13 REED J defensive rebound (3)
05:04	33 JITOBOH J foul shooting (1 - 5)			13 REED J foul drawn (2)
05:04				13 REED J free throw fast break 1 - 2 missed
05:04				offensive dead ball rebound (2)
05:04		<b>18-24</b>	<b>-6</b>	13 REED J free throw fast break 2 - 2 made (4)
04:44	5 RICHARD W 3pt FG , jump shot missed			
04:41				1 HAYES C defensive rebound (1)
04:38				3 HILL J 3pt FG , jump shot missed
04:33				offensive rebound (18)
04:33				1 HAYES C substitution out
04:33				0 HANNIBAL T substitution in
04:27				12 WILLIAMS K 2pt FG second chance in the paint, layup missed
04:25	5 RICHARD W defensive rebound (2)			
04:02	3 FUDGE A 3pt FG , jump shot missed			
03:58	33 JITOBOH J offensive rebound (4)			
03:43	11 LOFTON K 3pt FG second chance, step back jump shot made (3)	<b>21-24</b>	<b>-3</b>	
03:28	3 FUDGE A foul shooting (1 - 6)			0 HANNIBAL T foul drawn (1)
03:28				Timeout media
03:28	0 JONES M substitution out			
03:28	33 JITOBOH J substitution out			
03:28	14 REEVES K substitution in			
03:28	24 KUGEL R substitution in			
03:28				3 HILL J substitution out
03:28				13 REED J substitution out
03:28				1 HAYES C substitution in
03:28				20 FOUNTAIN D substitution in
03:28				0 HANNIBAL T free throw 1 - 2 missed
03:28				offensive dead ball rebound (3)
03:28		<b>21-25</b>	<b>-4</b>	0 HANNIBAL T free throw 2 - 2 made (3)



**LSU at Florida**

03/04/23 Exactech Arena at Stephen C. O'Connell Center, Gainesville  
2022-23 Men's Basketball

**Game Time:** 6:00 PM  
**Game Duration:** 2:05  
**Attendance:** 10,280

**Officials:** Pat Adams, Byron Jarrett, Patrick Evans

Game Time	UF	Score	Diff	LSU
03:09	14 REEVES K 2pt FG in the paint, jump shot missed			
03:06	14 REEVES K offensive rebound (1)			
03:06	14 REEVES K 2pt FG second chance in the paint, layup made (2)	<b>23-25</b>	<b>-2</b>	
02:53				20 FOUNTAIN D 2pt FG in the paint, jump shot blocked
02:53	3 FUDGE A block (1)			
02:52	defensive rebound (17)			
02:35	14 REEVES K 2pt FG in the paint, layup made (4)	<b>25-25</b>	<b>0</b>	
02:35	11 LOFTON K assist (2)			
02:19				44 MILLER A 3pt FG , jump shot missed
02:15				20 FOUNTAIN D offensive rebound (6)
02:14		<b>25-27</b>	<b>-2</b>	20 FOUNTAIN D 2pt FG second chance in the paint, layup made (7)
01:49	11 LOFTON K 2pt FG in the paint, layup made (5)	<b>27-27</b>	<b>0</b>	
01:32	11 LOFTON K foul personal (2 - 7)			12 WILLIAMS K foul drawn (2)
01:32		<b>27-28</b>	<b>-1</b>	12 WILLIAMS K 1&1 free throw 1 made (5)
01:32		<b>27-29</b>	<b>-2</b>	12 WILLIAMS K 1&1 free throw 2 made (6)
01:22	11 LOFTON K foul drawn (1)			1 HAYES C foul personal (1 - 6)
01:10	24 KUGEL R 2pt FG in the paint, jump shot made (4)	<b>29-29</b>	<b>0</b>	
01:00				12 WILLIAMS K 2pt FG in the paint, layup missed
00:58				12 WILLIAMS K offensive rebound (5)
00:57		<b>29-31</b>	<b>-2</b>	12 WILLIAMS K 2pt FG second chance in the paint, layup made (8)
00:55	3 FUDGE A turnover bad pass (1)			1 HAYES C steal (2)
00:55	3 FUDGE A foul shooting (2 - 8)			1 HAYES C foul drawn (2)
00:55		<b>29-32</b>	<b>-3</b>	1 HAYES C free throw fast break 1 - 2 made (1)
00:55		<b>29-33</b>	<b>-4</b>	1 HAYES C free throw fast break 2 - 2 made (2)
00:55	Timeout 30 Sec			
00:30	14 REEVES K 2pt FG outside the paint, turnaround jump shot missed			
00:27				12 WILLIAMS K defensive rebound (6)
00:18				Timeout 30 Sec
00:18	14 REEVES K substitution out			
00:18	4 LANE N substitution in			
00:03				12 WILLIAMS K 2pt FG in the paint, jump shot missed
00:00	3 FUDGE A defensive rebound (4)			
<b>END OF PERIOD</b>				
<b>UF 29-33 LSU</b>				



LSU at Florida

03/04/23 Exactech Arena at Stephen C. O'Connell Center, Gainesville  
2022-23 Men's Basketball

Game Time: 6:00 PM  
Game Duration: 2:05  
Attendance: 10,280

Officials: Pat Adams, Byron Jarrett, Patrick Evans

LSU - 33

NO.	Name	F	Min	FG	3P	FT	Rebounds			Fouls		TP	AS	TO	ST	Blocks		+/-
				M-A	M-A	M-A	OR	DR	TOT	PF	FD					BS	BA	
12	KJ Williams	F	17:17	3-9	0-2	2-2	3	3	6	1	2	8	1	0	0	0	0	2
15	Tyrell Ward	F	08:27	0-2	0-2	0-2	0	0	0	1	1	0	0	0	0	0	0	0
20	Derek Fountain	F	14:09	3-4	1-1	0-0	1	5	6	1	0	7	0	2	0	0	1	3
1	Cam Hayes	G	14:30	0-2	0-1	2-2	0	1	1	1	2	2	0	0	2	0	0	3
44	Adam Miller	G	16:00	3-7	1-4	0-0	0	2	2	0	0	7	1	1	0	0	0	4
3	Justice Hill		10:12	1-3	0-1	0-0	0	0	0	0	0	2	0	0	0	0	1	7
13	Jalen Reed		09:54	1-2	0-0	2-3	0	3	3	1	2	4	1	1	0	0	0	5
0	Trae Hannibal		09:31	1-1	0-0	1-2	1	0	1	1	1	3	1	1	1	0	0	-4
Team							2	0	2			0		0				
<b>Totals</b>				12-30	2-11	7-11	7	14	21	6	8	33	4	5	3	0	2	4

Shooting By Period		
1st FG%	12-30	40.0%
3PT%	2-11	18.2%
FT%	7-11	63.6%
GM FG%	12-30	40.0%
3PT%	2-11	18.2%
FT%	7-11	63.6%

Dead Ball Rebounds: 3, 0

Technical Fouls::NONE

Florida - 29

NO.	Name	C	Min	FG	3P	FT	Rebounds			Fouls		TP	AS	TO	ST	Blocks		+/-
				M-A	M-A	M-A	OR	DR	TOT	PF	FD					BS	BA	
33	Jason Jitoboh	C	11:31	2-4	0-0	2-2	3	1	4	1	1	6	0	2	0	0	0	-1
0	Myreon Jones	G	13:20	0-1	0-1	0-0	0	1	1	0	0	0	1	0	1	0	0	-3
5	Will Richard	G	17:17	3-4	2-3	0-0	0	2	2	0	0	8	0	0	2	0	0	-2
11	Kyle Lofton	G	14:49	2-4	1-2	0-0	0	2	2	2	1	5	2	1	0	1	0	-3
24	Riley Kugel	G	14:54	2-6	0-2	0-0	0	1	1	2	1	4	0	2	0	0	0	-2
3	Alex Fudge		10:49	1-5	0-2	0-0	2	2	4	2	1	2	0	1	0	1	0	-4
10	Denzel Aberdeen		05:01	0-1	0-0	0-0	0	2	2	1	0	0	1	0	0	0	0	-2
14	Kowacie Reeves		08:10	2-5	0-1	0-2	1	0	1	0	2	4	0	0	0	0	0	-3
4	Niels Lane		04:09	0-1	0-0	0-0	0	0	0	0	0	0	1	0	0	0	0	0
Team							0	1	1			0		0				
<b>Totals</b>				12-31	3-11	2-4	6	12	18	8	6	29	5	6	3	2	0	-4

Shooting By Period		
1st FG%	12-31	38.7%
3PT%	3-11	27.3%
FT%	2-4	50%
GM FG%	12-31	38.7%
3PT%	3-11	27.3%
FT%	2-4	50.0%

Dead Ball Rebounds: 1, 0

Technical Fouls::NONE

	LSU	UF
Biggest lead	6 (1 <sup>st</sup> 5:04)	5 (1 <sup>st</sup> 18:33)
Best Scoring Run	9 (1 <sup>st</sup> 5:04)	6 (1 <sup>st</sup> 8:17)
Lead Changes	3	
Times Tied	7	
Time with Lead	08:27	06:10

Points from	LSU	UF
Turnovers	2	2
Paint	18	18
Second Chance	8	12
Fast Breaks	5	2
Bench	9	6

	Period by Period Scoring		
	1st	2nd	TOT
LSU	33	34	67
UF	29	50	79



**Officials:** Pat Adams, Byron Jarrett, Patrick Evans

**Period 2**

**Quarter Starters:**

<b>UF</b>	0 Jones M	5 Richard W	11 Lofton K	24 Kugel R	33 Jitoboh J
<b>LSU</b>	1 Hayes C	12 Williams K	15 Ward T	20 Fountain D	44 Miller A

Game Time	UF	Score	Diff	LSU
20:00	3 FUDGE A substitution out			
20:00	4 LANE N substitution out			
20:00	0 JONES M substitution in			
20:00	33 JITOBOH J substitution in			
20:00				0 HANNIBAL T substitution out
20:00				15 WARD T substitution in
19:36	33 JITOBOH J foul shooting (2 - 1)			1 HAYES C foul drawn (3)
19:36		<b>29-34</b>	<b>-5</b>	1 HAYES C free throw 1 - 2 made (3)
19:36		<b>29-35</b>	<b>-6</b>	1 HAYES C free throw 2 - 2 made (4)
19:14	11 LOFTON K 2pt FG in the paint, layup missed			
19:11				15 WARD T defensive rebound (1)
18:57				1 HAYES C 3pt FG , jump shot missed
18:54	0 JONES M defensive rebound (2)			
18:33	5 RICHARD W 3pt FG , jump shot made (11)	<b>32-35</b>	<b>-3</b>	
18:33	33 JITOBOH J assist (1)			
18:21		<b>32-38</b>	<b>-6</b>	44 MILLER A 3pt FG , jump shot made (10)
18:21				1 HAYES C assist (1)
17:56	24 KUGEL R 3pt FG , jump shot missed			
17:53				1 HAYES C defensive rebound (2)
17:33	0 JONES M steal (2)			12 WILLIAMS K turnover lost ball (1)
17:27	11 LOFTON K 2pt FG from turnover in the paint, driving layup missed			
17:25				20 FOUNTAIN D defensive rebound (7)
17:20		<b>32-40</b>	<b>-8</b>	12 WILLIAMS K 2pt FG in the paint, layup made (10)
16:49	5 RICHARD W 3pt FG , jump shot missed			
16:45				44 MILLER A defensive rebound (3)
16:22		<b>32-42</b>	<b>-10</b>	12 WILLIAMS K 2pt FG in the paint, layup made (12)
16:22				44 MILLER A assist (2)
16:07	24 KUGEL R foul drawn (2)			15 WARD T foul personal (2 - 1)
16:07	0 JONES M substitution out			
16:07	10 ABERDEEN D substitution in			
16:07				1 HAYES C substitution out
16:07				20 FOUNTAIN D substitution out
16:07				3 HILL J substitution in
16:07				13 REED J substitution in
16:03	11 LOFTON K foul drawn (2)			13 REED J foul shooting (2 - 2)
16:03	11 LOFTON K free throw 1 - 2 missed			
16:03	offensive dead ball rebound (2)			
16:03	11 LOFTON K free throw 2 - 2 missed			
16:02				12 WILLIAMS K defensive rebound (7)
15:45		<b>32-44</b>	<b>-12</b>	12 WILLIAMS K 2pt FG in the paint, dunk, made (14)
15:45				15 WARD T assist (1)
15:31	24 KUGEL R 3pt FG , jump shot made (7)	<b>35-44</b>	<b>-9</b>	





Official Basketball Play by Play - Second Half  
**LSU at Florida**  
 03/04/23 Exactech Arena at Stephen C. O'Connell Center, Gainesville  
 2022-23 Men's Basketball

**Game Time:** 6:00 PM  
**Game Duration:** 2:05  
**Attendance:** 10,280

**Officials:** Pat Adams, Byron Jarrett, Patrick Evans

Game Time	UF	Score	Diff	LSU
15:29	Timeout 30 Sec			
15:29	Timeout media			
15:29	11 LOFTON K substitution out			
15:29	33 JITOBOH J substitution out			
15:29	3 FUDGE A substitution in			
15:29	4 LANE N substitution in			
15:08	5 RICHARD W foul shooting (1 - 2)			12 WILLIAMS K foul drawn (3)
15:08	Timeout media			
15:08		<b>35-45</b>	<b>-10</b>	12 WILLIAMS K free throw 1 - 2 made (15)
15:08				12 WILLIAMS K free throw 2 - 2 missed
15:07	3 FUDGE A defensive rebound (5)			
14:54	5 RICHARD W 2pt FG in the paint, layup made (13)	<b>37-45</b>	<b>-8</b>	
14:54	3 FUDGE A assist (1)			
14:54	5 RICHARD W foul drawn (1)			12 WILLIAMS K foul shooting (2 - 3)
14:54	5 RICHARD W free throw 1 - 1 made (14)	<b>38-45</b>	<b>-7</b>	
14:48	3 FUDGE A foul drawn (2)			13 REED J foul offensive (3 - 4)
14:48				13 REED J turnover offensive (2)
14:48				13 REED J substitution out
14:48				20 FOUNTAIN D substitution in
14:35	5 RICHARD W 3pt FG from turnover, jump shot missed			
14:31				44 MILLER A defensive rebound (4)
14:18				44 MILLER A turnover dribbling violation (2)
14:04	24 KUGEL R 3pt FG from turnover, jump shot made (10)	<b>41-45</b>	<b>-4</b>	
13:32				44 MILLER A 3pt FG , jump shot missed
13:29	5 RICHARD W defensive rebound (3)			
13:11	4 LANE N foul drawn (1)			12 WILLIAMS K foul shooting (3 - 5)
13:11	4 LANE N free throw 1 - 2 missed			
13:11	offensive dead ball rebound (3)			
13:11				12 WILLIAMS K substitution out
13:11				15 WARD T substitution out
13:11				44 MILLER A substitution out
13:11				0 HANNIBAL T substitution in
13:11				1 HAYES C substitution in
13:11				13 REED J substitution in
13:11	4 LANE N free throw 2 - 2 missed			
13:10				20 FOUNTAIN D defensive rebound (8)
12:42	5 RICHARD W foul personal (2 - 3)			0 HANNIBAL T foul drawn (2)
12:26				0 HANNIBAL T 2pt FG outside the paint, jump shot blocked
12:26	4 LANE N block (1)			
12:22				13 REED J offensive rebound (4)
12:21				13 REED J 2pt FG second chance in the paint, jump shot missed
12:19				20 FOUNTAIN D offensive rebound (9)
12:18		<b>41-47</b>	<b>-6</b>	20 FOUNTAIN D 2pt FG second chance in the paint, layup made (9)
12:07	10 ABERDEEN D foul drawn (1)			1 HAYES C foul personal (2 - 6)
12:00	3 FUDGE A foul drawn (3)			0 HANNIBAL T foul shooting (2 - 7)
12:00	Timeout media			
12:00	5 RICHARD W substitution out			
12:00	10 ABERDEEN D substitution out			



**Officials:** Pat Adams, Byron Jarrett, Patrick Evans

Game Time	UF	Score	Diff	LSU
12:00	11 LOFTON K substitution in			
12:00	14 REEVES K substitution in			
12:00	3 FUDGE A free throw 1 - 2 made (3)	<b>42-47</b>	<b>-5</b>	
12:00	3 FUDGE A free throw 2 - 2 made (4)	<b>43-47</b>	<b>-4</b>	
11:30		<b>43-49</b>	<b>-6</b>	13 REED J 2pt FG in the paint, driving layup made (6)
11:12	3 FUDGE A 3pt FG , jump shot missed			
11:10				0 HANNIBAL T defensive rebound (2)
11:10	4 LANE N foul personal (1 - 4)			0 HANNIBAL T foul drawn (3)
10:59				13 REED J turnover travel (3)
10:48	14 REEVES K 2pt FG from turnover in the paint, driving layup missed			
10:41	11 LOFTON K offensive rebound (3)			
10:41	11 LOFTON K 2pt FG from turnover second chance in the paint, layup missed			
10:38	3 FUDGE A offensive rebound (6)			
10:38	3 FUDGE A 2pt FG from turnover second chance in the paint, dunk, made (6)	<b>45-49</b>	<b>-4</b>	
10:28				13 REED J 2pt FG in the paint, dunk, missed
10:28	defensive rebound (24)			
10:28				0 HANNIBAL T substitution out
10:28				13 REED J substitution out
10:28				12 WILLIAMS K substitution in
10:28				44 MILLER A substitution in
10:10	24 KUGEL R turnover lost ball (3)			12 WILLIAMS K steal (1)
10:06				1 HAYES C 2pt FG from turnover in the paint, layup missed
10:03	11 LOFTON K defensive rebound (4)			
09:59	4 LANE N foul drawn (2)			12 WILLIAMS K foul shooting (4 - 8)
09:59	4 LANE N free throw fast break 1 - 2 made (1)	<b>46-49</b>	<b>-3</b>	
09:59	24 KUGEL R substitution out			
09:59	5 RICHARD W substitution in			
09:59				3 HILL J substitution out
09:59				12 WILLIAMS K substitution out
09:59				0 HANNIBAL T substitution in
09:59				13 REED J substitution in
09:59	4 LANE N free throw fast break 2 - 2 missed			
09:57	14 REEVES K offensive rebound (2)			
09:55	11 LOFTON K 3pt FG second chance, jump shot missed			
09:52	5 RICHARD W offensive rebound (4)			
09:51	5 RICHARD W 2pt FG second chance in the paint, layup made (16)	<b>48-49</b>	<b>-1</b>	
09:49				Timeout 30 Sec
09:38	4 LANE N foul personal (2 - 5)			0 HANNIBAL T foul drawn (4)
09:27	3 FUDGE A foul personal (3 - 6)			20 FOUNTAIN D foul drawn (1)
09:09				0 HANNIBAL T 2pt FG in the paint, layup missed
09:07				0 HANNIBAL T offensive rebound (3)
09:09	3 FUDGE A foul shooting (4 - 7)			0 HANNIBAL T foul drawn (5)
09:09		<b>48-50</b>	<b>-2</b>	0 HANNIBAL T free throw 1 - 2 made (4)
09:09	3 FUDGE A substitution out			
09:09	13 SZYMZYK A substitution in			
09:09		<b>48-51</b>	<b>-3</b>	0 HANNIBAL T free throw 2 - 2 made (5)



**Officials:** Pat Adams, Byron Jarrett, Patrick Evans

Game Time	UF	Score	Diff	LSU
08:55	11 LOFTON K 2pt FG in the paint, layup made (7)	<b>50-51</b>	<b>-1</b>	
08:55	5 RICHARD W assist (1)			
08:41		<b>50-53</b>	<b>-3</b>	0 HANNIBAL T 2pt FG in the paint, layup made (7)
08:41				13 REED J assist (2)
08:27	11 LOFTON K foul drawn (3)			1 HAYES C foul personal (3 - 9)
08:27	13 SZYMCZYK A substitution out			
08:27	33 JITOBOH J substitution in			
08:27	11 LOFTON K 1&1 free throw 1 made (8)	<b>51-53</b>	<b>-2</b>	
08:27	11 LOFTON K 1&1 free throw 2 made (9)	<b>52-53</b>	<b>-1</b>	
08:27				1 HAYES C substitution out
08:27				3 HILL J substitution in
08:16				0 HANNIBAL T 2pt FG in the paint, layup missed
08:14				13 REED J offensive rebound (5)
08:13				13 REED J 2pt FG second chance in the paint, layup missed
08:10	11 LOFTON K defensive rebound (5)			
07:47	33 JITOBOH J 2pt FG in the paint, layup missed			
07:44				13 REED J defensive rebound (6)
07:32	14 REEVES K steal (1)			13 REED J turnover bad pass (4)
07:29	14 REEVES K 2pt FG fast break from turnover in the paint, dunk, made (6)	<b>54-53</b>	<b>1</b>	
07:01				0 HANNIBAL T 2pt FG in the paint, driving layup blocked
07:01	33 JITOBOH J block (1)			
07:01				offensive rebound (35)
07:01	Timeout media			
07:01	4 LANE N substitution out			
07:01	24 KUGEL R substitution in			
07:01				0 HANNIBAL T substitution out
07:01				3 HILL J substitution out
07:01				1 HAYES C substitution in
07:01				15 WARD T substitution in
06:57				13 REED J 2pt FG second chance in the paint, layup missed
06:53	24 KUGEL R defensive rebound (2)			
06:44	14 REEVES K 3pt FG , jump shot missed			
06:40				13 REED J defensive rebound (7)
06:34		<b>54-55</b>	<b>-1</b>	20 FOUNTAIN D 2pt FG in the paint, layup made (11)
06:34				13 REED J assist (3)
06:12	5 RICHARD W 2pt FG in the paint, layup made (18)	<b>56-55</b>	<b>1</b>	
06:12	11 LOFTON K assist (3)			
05:46				20 FOUNTAIN D 3pt FG , jump shot missed
05:42	5 RICHARD W defensive rebound (5)			
05:16	24 KUGEL R 2pt FG in the paint, layup blocked			
05:16				20 FOUNTAIN D block (1)
05:11	24 KUGEL R offensive rebound (3)			
05:10	11 LOFTON K 3pt FG second chance, jump shot made (12)	<b>59-55</b>	<b>4</b>	
05:10	24 KUGEL R assist (1)			
05:10				20 FOUNTAIN D substitution out
05:10				12 WILLIAMS K substitution in
05:04	11 LOFTON K steal (1)			1 HAYES C turnover bad pass (1)
05:04	11 LOFTON K foul drawn (4)			13 REED J foul personal (4 - 10)



**LSU at Florida**

03/04/23 Exactech Arena at Stephen C. O'Connell Center, Gainesville  
2022-23 Men's Basketball

**Game Time:** 6:00 PM  
**Game Duration:** 2:05  
**Attendance:** 10,280

**Officials:** Pat Adams, Byron Jarrett, Patrick Evans

Game Time	UF	Score	Diff	LSU
05:04	11 LOFTON K free throw fast break 1 - 2 made (13)	<b>60-55</b>	<b>5</b>	
05:04				13 REED J substitution out
05:04				20 FOUNTAIN D substitution in
05:04	11 LOFTON K free throw fast break 2 - 2 made (14)	<b>61-55</b>	<b>6</b>	
04:48	5 RICHARD W foul personal (3 - 8)			12 WILLIAMS K foul drawn (4)
04:48		<b>61-56</b>	<b>5</b>	12 WILLIAMS K 1&1 free throw 1 made (16)
04:48				12 WILLIAMS K 1&1 free throw 2 missed
04:47	14 REEVES K defensive rebound (3)			
04:32	24 KUGEL R 3pt FG , jump shot made (13)	<b>64-56</b>	<b>8</b>	
04:14		<b>64-58</b>	<b>6</b>	1 HAYES C 2pt FG in the paint, layup made (6)
03:53	24 KUGEL R 3pt FG , jump shot made (16)	<b>67-58</b>	<b>9</b>	
03:34		<b>67-60</b>	<b>7</b>	1 HAYES C 2pt FG in the paint, driving layup made (8)
03:12	14 REEVES K 2pt FG in the paint, driving layup made (8)	<b>69-60</b>	<b>9</b>	
03:09	Timeout 30 Sec			
03:09	Timeout media			
03:09	33 JITOBOH J substitution out			
03:09	3 FUDGE A substitution in			
02:49				1 HAYES C 2pt FG in the paint, jump shot missed
02:46	5 RICHARD W defensive rebound (6)			
02:26	24 KUGEL R 2pt FG in the paint, layup made (18)	<b>71-60</b>	<b>11</b>	
02:26	11 LOFTON K assist (4)			
02:26	24 KUGEL R foul drawn (3)			20 FOUNTAIN D foul shooting (2 - 11)
02:26				15 WARD T substitution out
02:26				0 HANNIBAL T substitution in
02:26	24 KUGEL R free throw 1 - 1 made (19)	<b>72-60</b>	<b>12</b>	
02:16				turnover 10 sec back court (12)
01:57	11 LOFTON K 3pt FG from turnover, jump shot missed			
01:54				0 HANNIBAL T defensive rebound (4)
01:50	11 LOFTON K steal (2)			44 MILLER A turnover lost ball (3)
01:45	24 KUGEL R 2pt FG fast break from turnover in the paint, layup made (21)	<b>74-60</b>	<b>14</b>	
01:45	11 LOFTON K assist (5)			
01:33				1 HAYES C 2pt FG in the paint, jump shot missed
01:31				12 WILLIAMS K offensive rebound (8)
01:31	3 FUDGE A foul shooting (5 - 9)			12 WILLIAMS K foul drawn (5)
01:31	3 FUDGE A substitution out			
01:31	0 JONES M substitution in			
01:31		<b>74-61</b>	<b>13</b>	12 WILLIAMS K free throw 1 - 2 made (17)
01:31				1 HAYES C substitution out
01:31				3 HILL J substitution in
01:31				12 WILLIAMS K free throw 2 - 2 missed
01:30	14 REEVES K defensive rebound (4)			
01:18	14 REEVES K 2pt FG in the paint, layup missed			
01:16				12 WILLIAMS K defensive rebound (9)
01:07				3 HILL J 3pt FG , jump shot missed
01:05				0 HANNIBAL T offensive rebound (5)
01:05	0 JONES M foul personal (1 - 10)			0 HANNIBAL T foul drawn (6)
01:05		<b>74-62</b>	<b>12</b>	0 HANNIBAL T free throw 1 - 2 made (8)
01:05		<b>74-63</b>	<b>11</b>	0 HANNIBAL T free throw 2 - 2 made (9)



**Officials:** Pat Adams, Byron Jarrett, Patrick Evans

Game Time	UF	Score	Diff	LSU
00:56	0 JONES M 3pt FG , jump shot made (3)	<b>77-63</b>	<b>14</b>	
00:56	5 RICHARD W assist (2)			
00:49	5 RICHARD W foul shooting (4 - 11)			12 WILLIAMS K foul drawn (6)
00:49		<b>77-64</b>	<b>13</b>	12 WILLIAMS K free throw fast break 1 - 2 made (18)
00:49		<b>77-65</b>	<b>12</b>	12 WILLIAMS K free throw fast break 2 - 2 made (19)
00:45	24 KUGEL R turnover lost ball (4)			44 MILLER A steal (1)
00:44				44 MILLER A 2pt FG from turnover in the paint, layup missed
00:44				20 FOUNTAIN D offensive rebound (10)
00:44		<b>77-67</b>	<b>10</b>	20 FOUNTAIN D 2pt FG from turnover second chance in the paint, layup made (13)
00:44				Timeout 30 Sec
00:36	11 LOFTON K foul drawn (5)			44 MILLER A foul personal (1 - 12)
00:36	11 LOFTON K free throw fast break 1 - 2 made (15)	<b>78-67</b>	<b>11</b>	
00:36	11 LOFTON K free throw fast break 2 - 2 made (16)	<b>79-67</b>	<b>12</b>	
00:28				12 WILLIAMS K 2pt FG outside the paint, jump shot missed
00:26				20 FOUNTAIN D offensive rebound (11)
00:25				20 FOUNTAIN D 2pt FG second chance in the paint, layup missed
00:20				20 FOUNTAIN D offensive rebound (12)
00:21				20 FOUNTAIN D 2pt FG second chance in the paint, layup missed
00:21	0 JONES M defensive rebound (3)			
00:21	0 JONES M substitution out			
00:21	11 LOFTON K substitution out			
00:21	20 MAY J substitution in			
00:21	21 KLATSKY A substitution in			
<b>END OF GAME</b>				
<b>UF 79-67 LSU</b>				



LSU at Florida

03/04/23 Exactech Arena at Stephen C. O'Connell Center, Gainesville  
2022-23 Men's Basketball

Game Time: 6:00 PM  
Game Duration: 2:05  
Attendance: 10,280

Officials: Pat Adams, Byron Jarrett, Patrick Evans

LSU - 34

NO.	Name	F	Min	FG	3P	FT	Rebounds			Fouls		TP	AS	TO	ST	Blocks		+/-
				M-A	M-A	M-A	OR	DR	TOT	PF	FD					BS	BA	
12	KJ Williams	F	12:28	3-4	0-0	5-8	1	2	3	3	4	11	0	1	1	0	0	-9
15	Tyrell Ward	F	11:24	0-0	0-0	0-0	0	1	1	1	0	0	1	0	0	0	0	-10
20	Derek Fountain	F	18:35	3-6	0-1	0-0	4	2	6	1	1	6	0	0	0	1	0	-12
1	Cam Hayes	G	14:07	2-6	0-1	2-2	0	1	1	2	1	6	1	1	0	0	0	-9
44	Adam Miller	G	17:17	1-3	1-2	0-0	0	2	2	1	0	3	1	2	1	0	0	-16
3	Justice Hill		09:05	0-1	0-1	0-0	0	0	0	0	0	0	0	0	0	0	0	-8
13	Jalen Reed		08:57	1-5	0-0	0-0	2	2	4	3	0	2	2	3	0	0	0	-11
0	Trae Hannibal		08:07	1-5	0-0	4-4	2	2	4	1	5	6	0	0	0	0	2	-5
Team							1	0	1			0		1				
<b>Totals</b>				11-30	1-5	11-14	10	12	22	12	11	34	5	8	2	1	2	-16

Shooting By Period		
2 <sup>nd</sup> FG%	11-30	36.7%
3PT%	1-5	20.0%
FT%	11-14	78.6%
GM FG%	11-30	36.7%
3PT%	1-5	20.0%
FT%	11-14	78.6%

Dead Ball Rebounds: 0, 0

Technical Fouls::NONE

Florida - 50

NO.	Name	C	Min	FG	3P	FT	Rebounds			Fouls		TP	AS	TO	ST	Blocks		+/-
				M-A	M-A	M-A	OR	DR	TOT	PF	FD					BS	BA	
33	Jason Jitoboh	C	09:49	0-1	0-0	0-0	0	0	0	1	0	0	1	0	0	1	0	7
0	Myreon Jones	G	05:02	1-1	1-1	0-0	0	2	2	1	0	3	0	0	1	0	0	-8
5	Will Richard	G	17:59	4-6	1-3	1-1	1	3	4	4	1	10	2	0	0	0	0	13
11	Kyle Lofton	G	16:09	2-7	1-3	6-8	1	2	3	0	4	11	3	0	2	0	0	13
24	Riley Kugel	G	17:02	6-8	4-5	1-1	1	1	2	0	2	17	1	2	0	0	1	12
10	Denzel Aberdeen		04:07	0-0	0-0	0-0	0	0	0	0	1	0	0	0	0	0	0	4
3	Alex Fudge		07:58	1-2	0-1	2-2	1	1	2	3	2	4	1	0	0	0	0	12
4	Niels Lane		08:28	0-0	0-0	1-4	0	0	0	2	2	1	0	0	0	1	0	10
14	Kowacie Reeves		12:00	2-5	0-1	0-0	1	2	3	0	0	4	0	0	1	0	0	18
13	Aleks Szymczyk		00:42	0-0	0-0	0-0	0	0	0	0	0	0	0	0	0	0	0	-1
20	Jack May		00:22	0-0	0-0	0-0	0	0	0	0	0	0	0	0	0	0	0	0
21	Alex Klatsky		00:22	0-0	0-0	0-0	0	0	0	0	0	0	0	0	0	0	0	0
Team							0	1	1			0		0				
<b>Totals</b>				16-30	7-14	11-16	5	12	17	11	12	50	8	2	4	2	1	16

Shooting By Period		
2 <sup>nd</sup> FG%	16-30	53.3%
3PT%	7-14	50.0%
FT%	11-16	68.8%
GM FG%	16-30	53.3%
3PT%	7-14	50.0%
FT%	11-16	68.8%

Dead Ball Rebounds: 2, 0

Technical Fouls::NONE

	LSU	UF
Biggest lead	12 (2 <sup>nd</sup> 15:45)	14 (2 <sup>nd</sup> 1:45)
Best Scoring Run	9(2 <sup>nd</sup> 15:45)	7(2 <sup>nd</sup> 5:04)
Lead Changes	3	
Times Tied	0	
Time with Lead	12:29	07:07

Points from	LSU	UF
Turnovers	2	11
Paint	20	18
Second Chance	9	7
Fast Breaks	2	9
Bench	8	9

	Period by Period Scoring		
	1st	2nd	TOT
LSU	33	34	67
UF	29	50	79



**LSU at Florida**

03/04/23 Exactech Arena at Stephen C. O'Connell Center, Gainesville  
2022-23 Men's Basketball

**Game Time:** 6:00 PM  
**Game Duration:** 2:05  
**Attendance:** 10,280

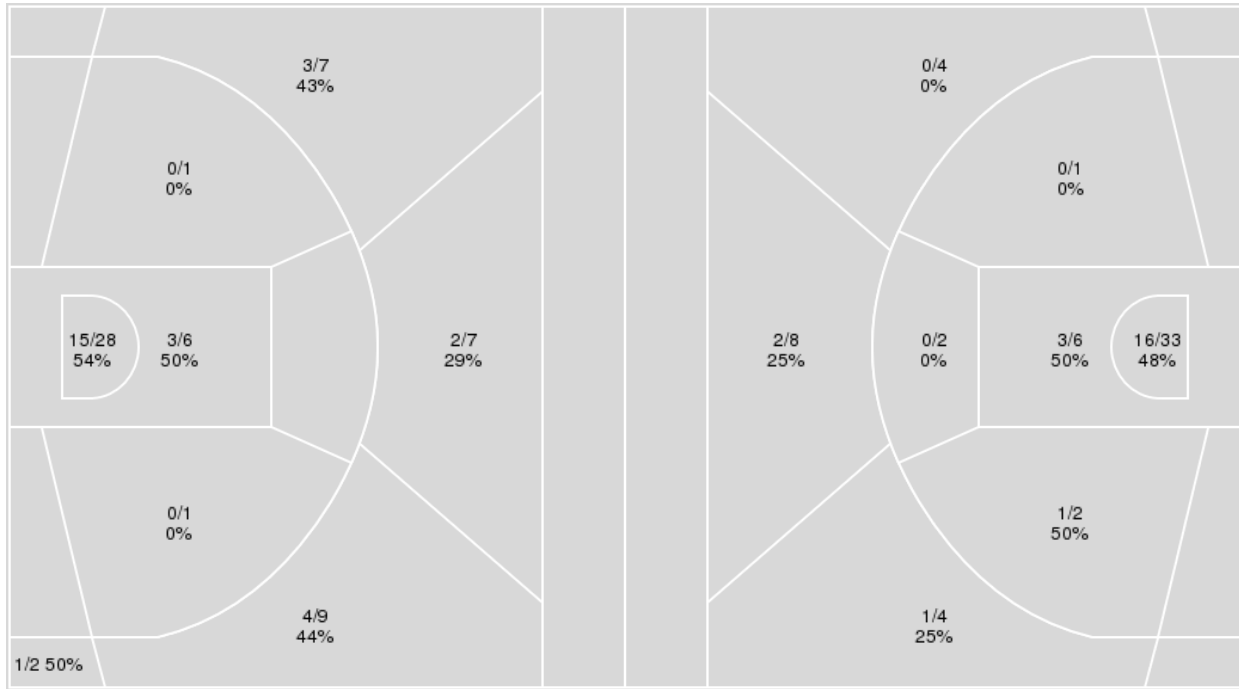
**Officials:** Pat Adams, Byron Jarrett, Patrick Evans

{ Players => 0, 1, 2, 3, 4, 5, 10, 11, 12, 13, 14, 20, 21, 24, 33; } FG  
Types => All; Results => All;

{ Players => 0, 1, 2, 3, 4, 5, 10, 11, 12, 13, 15, 20, 21, 25, 30, 34, 44; }  
FG Types => All; Results => All;

**Florida**

**LSU**



Florida	M/A	%
Field Goals	28/61	46
2 Points	18/36	50
3 Points	10/25	40
Free Throws	13/20	65

LSU	M/A	%
Field Goals	23/60	38
2 Points	20/44	45
3 Points	3/16	19
Free Throws	18/25	72



**LSU at Florida**

03/04/23 Exactech Arena at Stephen C. O'Connell Center, Gainesville  
2022-23 Men's Basketball

**Game Time:** 6:00 PM  
**Game Duration:** 2:05  
**Attendance:** 10,280

**Officials:** Pat Adams, Byron Jarrett, Patrick Evans

**LSU**

No	Name	Mins		Score		Points Diff		Points per Min		Assists		Rebounds		Steals		Turnovers	
		On	Off	On	Off	On	Off	On	Off	On	Off	On	Off	On	Off	On	Off
0	Trae Hannibal	17:38	22:22	28 - 37	39 - 42	-9	-3	1.59	1.74	2	7	24	19	3	2	6	7
1	Cam Hayes	28:37	11:23	52 - 58	15 - 21	-6	-6	1.82	1.32	7	2	27	16	4	1	8	5
3	Justice Hill	19:17	20:43	30 - 31	37 - 48	-1	-11	1.56	1.79	3	6	28	15	2	3	6	7
12	KJ Williams	29:45	10:15	53 - 60	14 - 19	-7	-5	1.78	1.37	6	3	31	12	5	0	10	3
13	Jalen Reed	18:51	21:09	30 - 36	37 - 43	-6	-6	1.59	1.75	6	3	22	21	0	5	6	7
15	Tyrell Ward	19:51	20:09	30 - 40	37 - 39	-10	-2	1.51	1.84	6	3	14	29	2	3	8	5
20	Derek Fountain	32:44	07:16	53 - 62	14 - 17	-9	-3	1.62	1.93	7	2	35	8	5	0	10	3
44	Adam Miller	33:17	06:43	59 - 71	8 - 8	-12	0	1.77	1.19	8	1	34	9	4	1	11	2

**Florida**

No	Name	Mins		Score		Points Diff		Points per Min		Assists		Rebounds		Steals		Turnovers	
		On	Off	On	Off	On	Off	On	Off	On	Off	On	Off	On	Off	On	Off
0	Myreon Jones	18:22	21:38	27 - 38	52 - 29	-11	23	1.47	2.40	5	8	14	21	4	3	5	3
3	Alex Fudge	18:47	21:13	33 - 25	46 - 42	8	4	1.76	2.17	5	8	20	15	1	6	3	5
4	Niels Lane	12:37	27:23	26 - 16	53 - 51	10	2	2.06	1.94	4	9	13	22	1	6	2	6
5	Will Richard	35:16	04:44	72 - 61	7 - 6	11	1	2.04	1.48	13	0	29	6	7	0	7	1
10	Denzel Aberdeen	09:08	30:52	13 - 11	66 - 56	2	10	1.42	2.14	2	11	8	27	0	7	1	7
11	Kyle Lofton	30:58	09:02	64 - 54	15 - 13	10	2	2.07	1.66	10	3	28	7	7	0	7	1
13	Aleks Szymczyk	00:42	39:18	2 - 3	77 - 64	-1	13	2.86	1.96	1	12	0	35	0	7	0	8
14	Kowacie Reeves	20:10	19:50	50 - 35	29 - 32	15	-3	2.48	1.46	8	5	22	13	3	4	4	4
20	Jack May	00:22	39:38	0 - 0	79 - 67	0	12	0.00	1.99	0	13	0	35	0	7	0	8
21	Alex Klatsky	00:22	39:38	0 - 0	79 - 67	0	12	0.00	1.99	0	13	0	35	0	7	0	8
24	Riley Kugel	31:56	08:04	66 - 56	13 - 11	10	2	2.07	1.61	11	2	26	9	6	1	7	1
33	Jason Jitoboh	21:20	18:40	42 - 36	37 - 31	6	6	1.97	1.98	6	7	15	20	6	1	4	4

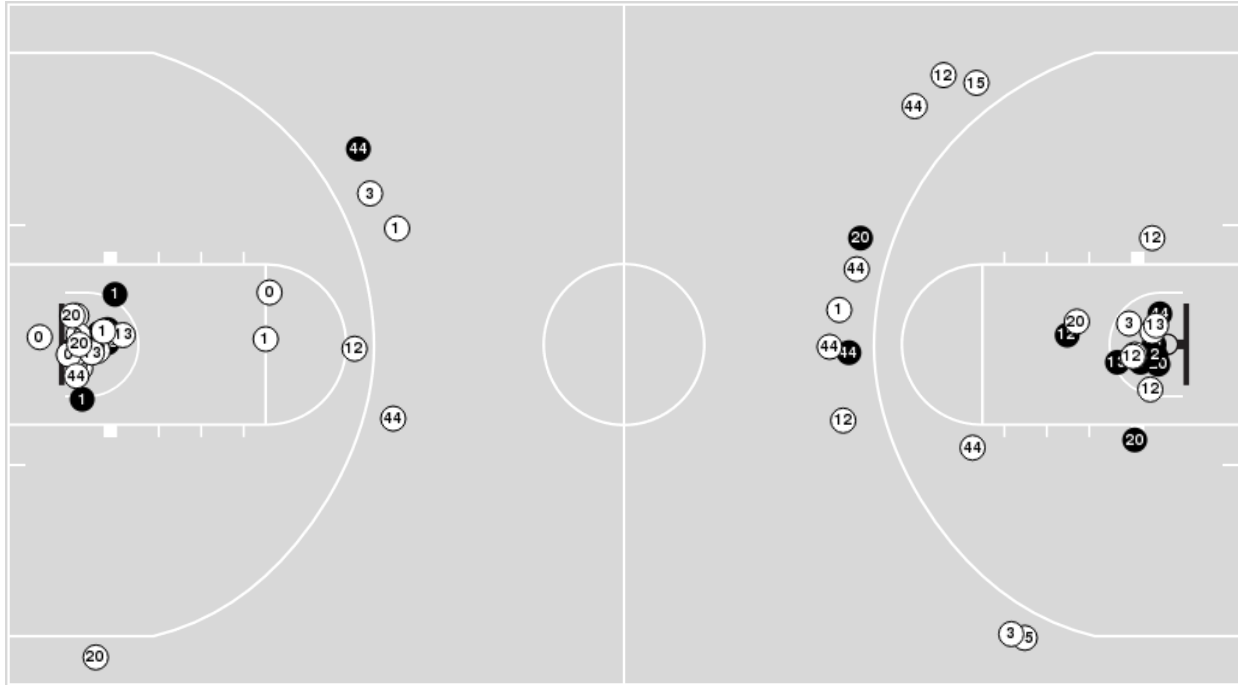




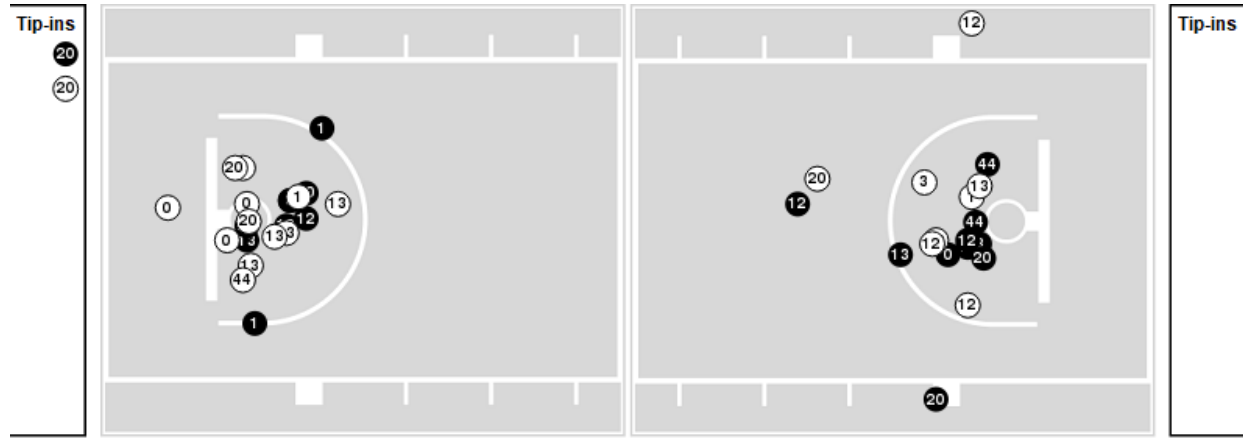
Players => 0, 1, 2, 3, 4, 5, 10, 11, 12, 13, 15, 20, 21, 25, 30, 34, 44 FG Types=>All Results=>All

**LSU**

**All Field Goals**



**Blow Up Chart**



● Made    ○ Missed    N - Player Number

LSU	M/A	%
Field Goals	23/60	38
2 Points	20/44	45
3 Points	3/16	19
Free Throws	18/25	72

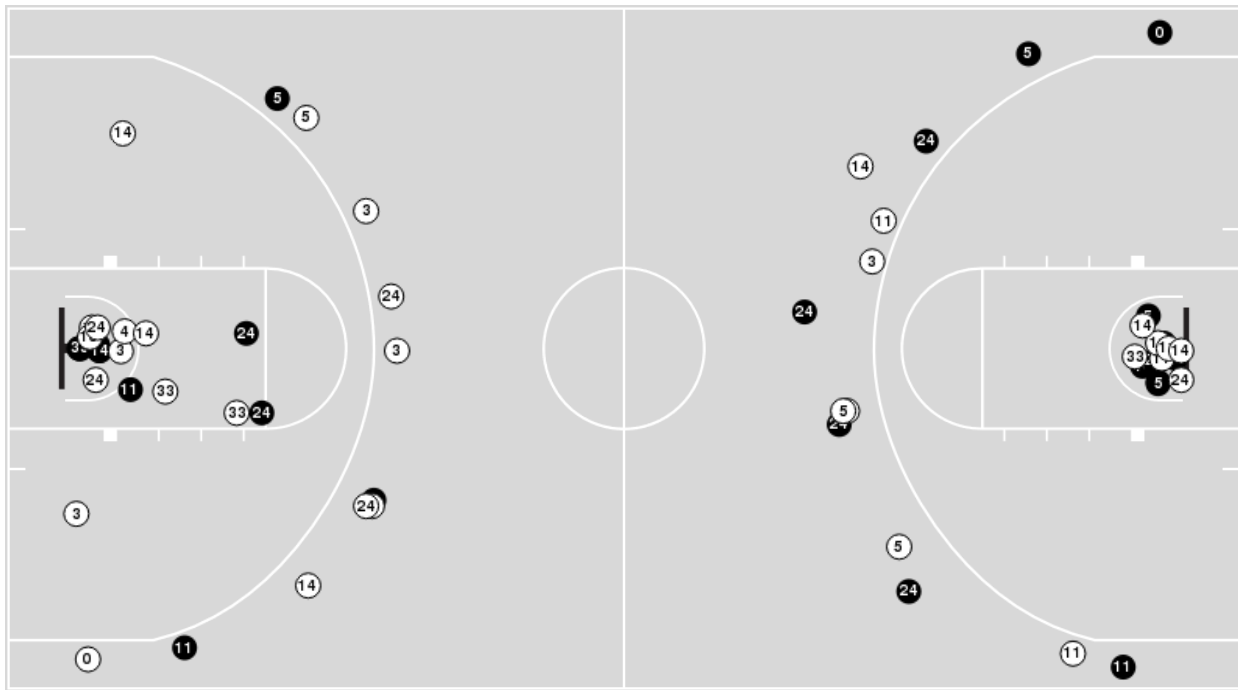
LSU	M/A	%
Points in the Paint	38 (19 / 39)	49
Fast Break Points	7 (6/7)	86
Second Chance Points	17 (11/20)	55
Effective FG%	41	



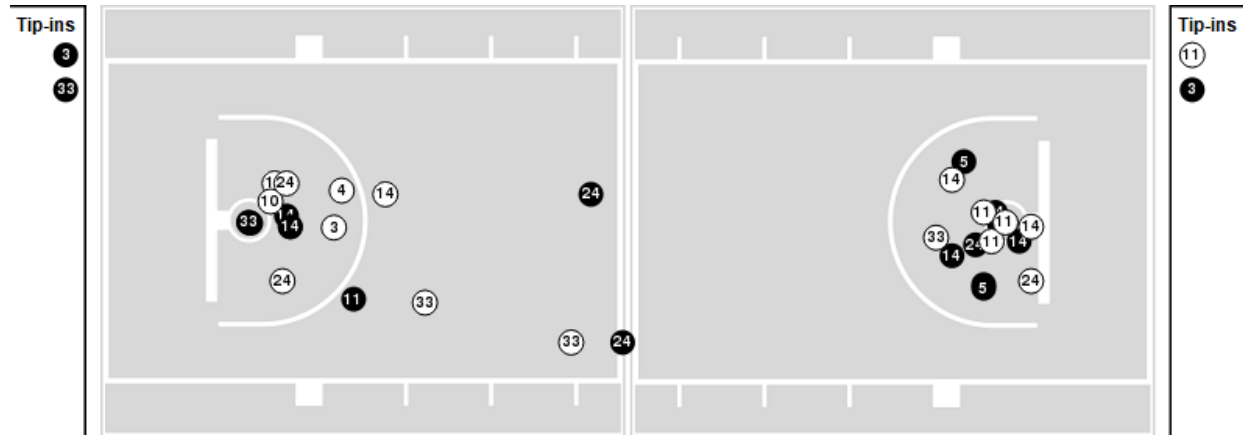
Players => 0, 1, 2, 3, 4, 5, 10, 11, 12, 13, 14, 20, 21, 24, 33FG Types=>AllResults=>All

Florida

All Field Goals



Blow Up Chart



● Made ○ Missed N - Player Number

Florida	M/A	%
Field Goals	28/61	46
2 Points	18/36	50
3 Points	10/25	40
Free Throws	13/20	65

Florida	M/A	%
Points in the Paint	36 (18 / 34)	53
Fast Break Points	11 (8/9)	89
Second Chance Points	19 (8/11)	73
Effective FG%	54	



**LSU at Florida**

03/04/23 Exactech Arena at Stephen C. O'Connell Center, Gainesville  
2022-23 Men's Basketball

**Game Time:** 6:00 PM  
**Game Duration:** 2:05  
**Attendance:** 10,280

**Officials:** Pat Adams, Byron Jarrett, Patrick Evans

**LSU**

Lineup	Quarter On	Time On	Quarter Off	Time Off	Time on Court	Score	Score Diff	Reb	Stl	Tov	Ass	PPP
1- Hayes C/ 12- Williams K/ 15- Ward T/ 20- Fountain D/ 44- Miller A/	1	20:00	1	16:46	03:14	3-7	-4	1	1	2	1	0.6148
3- Hill J/ 12- Williams K/ 15- Ward T/ 20- Fountain D/ 44- Miller A/	1	16:46	1	14:39	02:07	4-0	4	3	0	1	0	1.0000
3- Hill J/ 12- Williams K/ 13- Reed J/ 20- Fountain D/ 44- Miller A/	1	14:39	1	13:19	01:20	2-0	2	2	0	0	1	0.6667
0- Hannibal T/ 3- Hill J/ 12- Williams K/ 13- Reed J/ 44- Miller A/	1	13:19	1	12:21	00:58	0-2	-2	1	0	1	0	0.0000
0- Hannibal T/ 1- Hayes C/ 3- Hill J/ 13- Reed J/ 20- Fountain D/	1	12:21	1	11:27	00:54	0-0	0	2	0	0	0	0.0000
0- Hannibal T/ 1- Hayes C/ 13- Reed J/ 15- Ward T/ 20- Fountain D/	1	11:27	1	09:38	01:49	4-2	2	1	0	1	1	1.3333
0- Hannibal T/ 1- Hayes C/ 12- Williams K/ 15- Ward T/ 20- Fountain D/	1	09:38	1	08:21	01:17	0-2	-2	2	1	0	0	0.0000
1- Hayes C/ 3- Hill J/ 12- Williams K/ 13- Reed J/ 44- Miller A/	1	08:21	1	04:33	03:48	11-5	6	6	0	0	1	2.0677
0- Hannibal T/ 3- Hill J/ 12- Williams K/ 13- Reed J/ 44- Miller A/	1	04:33	1	03:28	01:05	0-3	-3	0	0	0	0	0.0000
0- Hannibal T/ 1- Hayes C/ 12- Williams K/ 20- Fountain D/ 44- Miller A/	1	03:28	2	20:00	03:28	9-8	1	3	1	0	0	1.3554
1- Hayes C/ 12- Williams K/ 15- Ward T/ 20- Fountain D/ 44- Miller A/	2	20:00	2	16:07	03:53	9-3	6	4	0	1	2	1.5306
3- Hill J/ 12- Williams K/ 13- Reed J/ 15- Ward T/ 44- Miller A/	2	16:07	2	14:48	01:19	3-6	-3	1	0	1	1	1.0417
3- Hill J/ 12- Williams K/ 15- Ward T/ 20- Fountain D/ 44- Miller A/	2	14:48	2	13:11	01:37	0-3	-3	1	0	1	0	0.0000
0- Hannibal T/ 1- Hayes C/ 3- Hill J/ 13- Reed J/ 20- Fountain D/	2	13:11	2	10:28	02:43	4-4	0	4	0	1	0	1.0000
1- Hayes C/ 3- Hill J/ 12- Williams K/ 20- Fountain D/ 44- Miller A/	2	10:28	2	09:59	00:29	0-1	-1	0	1	0	0	0.0000
0- Hannibal T/ 1- Hayes C/ 13- Reed J/ 20- Fountain D/ 44- Miller A/	2	09:59	2	08:27	01:32	4-6	-2	1	0	0	1	2.1277
0- Hannibal T/ 3- Hill J/ 13- Reed J/ 20- Fountain D/ 44- Miller A/	2	08:27	2	07:01	01:26	0-2	-2	3	0	1	0	0.0000
1- Hayes C/ 13- Reed J/ 15- Ward T/ 20- Fountain D/ 44- Miller A/	2	07:01	2	05:10	01:51	2-5	-3	1	0	0	1	0.6667
1- Hayes C/ 12- Williams K/ 13- Reed J/ 15- Ward T/ 44- Miller A/	2	05:10	2	05:04	00:06	0-1	-1	0	0	1	0	0.0000
1- Hayes C/ 12- Williams K/ 15- Ward T/ 20- Fountain D/ 44- Miller A/	2	05:04	2	02:26	02:38	5-11	-6	0	0	0	0	1.2887
0- Hannibal T/ 1- Hayes C/ 12- Williams K/ 20- Fountain D/ 44- Miller A/	2	02:26	2	01:31	00:55	1-3	-2	2	0	2	0	0.4098
0- Hannibal T/ 3- Hill J/ 12- Williams K/ 20- Fountain D/ 44- Miller A/	2	01:31	2	00:00	01:31	6-5	1	5	1	0	0	1.4286



**LSU at Florida**

03/04/23 Exactech Arena at Stephen C. O'Connell Center, Gainesville  
2022-23 Men's Basketball

**Game Time:** 6:00 PM  
**Game Duration:** 2:05  
**Attendance:** 10,280

**Officials:** Pat Adams, Byron Jarrett, Patrick Evans

**Florida**

Lineup	Quarter On	Time On	Quarter Off	Time Off	Time on Court	Score	Score Diff	Reb	Stl	Tov	Ass	PPP
0- Jones M/ 5- Richard W/ 11- Lofton K/ 24- Kugel R/ 33- Jitoboh J/	1	20:00	1	14:39	05:21	7-7	0	4	3	3	1	0.7085
3- Fudge A/ 5- Richard W/ 10- Aberdeen D/ 11- Lofton K/ 14- Reeves K/	1	14:39	1	12:21	02:18	2-2	0	4	0	1	1	0.4000
3- Fudge A/ 10- Aberdeen D/ 11- Lofton K/ 14- Reeves K/ 24- Kugel R/	1	12:21	1	11:27	00:54	0-0	0	0	0	0	0	0.0000
0- Jones M/ 3- Fudge A/ 10- Aberdeen D/ 14- Reeves K/ 24- Kugel R/	1	11:27	1	09:38	01:49	2-4	-2	2	0	0	0	1.0638
0- Jones M/ 4- Lane N/ 5- Richard W/ 24- Kugel R/ 33- Jitoboh J/	1	09:38	1	06:16	03:22	7-6	1	3	0	1	2	1.4000
0- Jones M/ 4- Lane N/ 5- Richard W/ 11- Lofton K/ 33- Jitoboh J/	1	06:16	1	05:48	00:28	0-1	-1	0	0	0	0	0.0000
0- Jones M/ 3- Fudge A/ 5- Richard W/ 11- Lofton K/ 33- Jitoboh J/	1	05:48	1	03:28	02:20	3-4	-1	2	0	0	0	1.0000
3- Fudge A/ 5- Richard W/ 11- Lofton K/ 14- Reeves K/ 24- Kugel R/	1	03:28	1	00:18	03:09	8-9	-1	2	0	1	1	1.3333
3- Fudge A/ 4- Lane N/ 5- Richard W/ 11- Lofton K/ 24- Kugel R/	1	00:18	2	20:00	00:19	0-0	0	1	0	0	0	0.0000
0- Jones M/ 5- Richard W/ 11- Lofton K/ 24- Kugel R/ 33- Jitoboh J/	2	20:00	2	16:07	03:53	3-9	-6	1	1	0	1	0.6000
5- Richard W/ 10- Aberdeen D/ 11- Lofton K/ 24- Kugel R/ 33- Jitoboh J/	2	16:07	2	15:29	00:38	3-2	1	0	0	0	0	1.5957
3- Fudge A/ 4- Lane N/ 5- Richard W/ 10- Aberdeen D/ 24- Kugel R/	2	15:29	2	12:00	03:29	6-3	3	2	0	0	1	1.3889
3- Fudge A/ 4- Lane N/ 11- Lofton K/ 14- Reeves K/ 24- Kugel R/	2	12:00	2	09:59	02:01	5-2	3	4	0	1	0	1.1574
3- Fudge A/ 4- Lane N/ 5- Richard W/ 11- Lofton K/ 14- Reeves K/	2	09:59	2	09:09	00:50	2-1	1	2	0	0	0	4.5455
4- Lane N/ 5- Richard W/ 11- Lofton K/ 13- Szymczyk A/ 14- Reeves K/	2	09:09	2	08:27	00:42	2-3	-1	0	0	0	1	2.0000
4- Lane N/ 5- Richard W/ 11- Lofton K/ 14- Reeves K/ 33- Jitoboh J/	2	08:27	2	07:01	01:26	4-0	4	1	1	0	0	1.3889
5- Richard W/ 11- Lofton K/ 14- Reeves K/ 24- Kugel R/ 33- Jitoboh J/	2	07:01	2	03:09	03:52	15-7	8	4	1	0	2	2.1802
3- Fudge A/ 5- Richard W/ 11- Lofton K/ 14- Reeves K/ 24- Kugel R/	2	03:09	2	01:31	01:38	5-0	5	1	1	0	2	1.4535
0- Jones M/ 5- Richard W/ 11- Lofton K/ 14- Reeves K/ 24- Kugel R/	2	01:31	2	00:21	01:09	5-7	-2	2	0	1	1	1.2887
5- Richard W/ 14- Reeves K/ 20- May J/ 21- Klatsky A/ 24- Kugel R/	2	00:21	2	00:00	00:22	0-0	0	0	0	0	0	0.0000



**LSU at Florida**

03/04/23 Exactech Arena at Stephen C. O'Connell Center, Gainesville  
2022-23 Men's Basketball

**Game Time:** 6:00 PM  
**Game Duration:** 2:05  
**Attendance:** 10,280

**Officials:** Pat Adams, Byron Jarrett, Patrick Evans

**LSU**

Lineup	Time	Score	Score Diff	Pts/Min	Reb	Stl	Tov	Ass	PPP
1- Hayes C/ 12- Williams K/ 15- Ward T/ 20- Fountain D/ 44- Miller A/	09:45	17-21	-4	1.7436	5	1	3	3	1.1612
0- Hannibal T/ 1- Hayes C/ 12- Williams K/ 20- Fountain D/ 44- Miller A/	04:23	10-11	-1	2.2814	5	1	2	0	1.1013
1- Hayes C/ 3- Hill J/ 12- Williams K/ 13- Reed J/ 44- Miller A/	03:48	11-5	6	2.8947	6	0	0	1	2.0677
3- Hill J/ 12- Williams K/ 15- Ward T/ 20- Fountain D/ 44- Miller A/	03:44	4-3	1	1.0714	4	0	2	0	0.6667
0- Hannibal T/ 1- Hayes C/ 3- Hill J/ 13- Reed J/ 20- Fountain D/	03:37	4-4	0	1.1060	6	0	1	0	1.0000
0- Hannibal T/ 3- Hill J/ 12- Williams K/ 13- Reed J/ 44- Miller A/	02:03	0-5	-5	0.0000	1	0	1	0	0.0000
1- Hayes C/ 13- Reed J/ 15- Ward T/ 20- Fountain D/ 44- Miller A/	01:51	2-5	-3	1.0811	1	0	0	1	0.6667
0- Hannibal T/ 1- Hayes C/ 13- Reed J/ 15- Ward T/ 20- Fountain D/	01:49	4-2	2	2.2018	1	0	1	1	1.3333
0- Hannibal T/ 1- Hayes C/ 13- Reed J/ 20- Fountain D/ 44- Miller A/	01:32	4-6	-2	2.6087	1	0	0	1	2.1277
0- Hannibal T/ 3- Hill J/ 12- Williams K/ 20- Fountain D/ 44- Miller A/	01:31	6-5	1	3.9560	5	1	0	0	1.4286
0- Hannibal T/ 3- Hill J/ 13- Reed J/ 20- Fountain D/ 44- Miller A/	01:26	0-2	-2	0.0000	3	0	1	0	0.0000
3- Hill J/ 12- Williams K/ 13- Reed J/ 20- Fountain D/ 44- Miller A/	01:20	2-0	2	1.5000	2	0	0	1	0.6667
3- Hill J/ 12- Williams K/ 13- Reed J/ 15- Ward T/ 44- Miller A/	01:19	3-6	-3	2.2785	1	0	1	1	1.0417
0- Hannibal T/ 1- Hayes C/ 12- Williams K/ 15- Ward T/ 20- Fountain D/	01:17	0-2	-2	0.0000	2	1	0	0	0.0000
1- Hayes C/ 3- Hill J/ 12- Williams K/ 20- Fountain D/ 44- Miller A/	00:29	0-1	-1	0.0000	0	1	0	0	0.0000
1- Hayes C/ 12- Williams K/ 13- Reed J/ 15- Ward T/ 44- Miller A/	00:06	0-1	-1	0.0000	0	0	1	0	0.0000



## LSU at Florida

03/04/23 Exactech Arena at Stephen C. O'Connell Center, Gainesville  
2022-23 Men's BasketballGame Time: 6:00 PM  
Game Duration: 2:05  
Attendance: 10,280

Officials: Pat Adams, Byron Jarrett, Patrick Evans

## Florida

Lineup	Time	Score	Score Diff	Pts/Min	Reb	Stl	Tov	Ass	PPP
0- Jones M/ 5- Richard W/ 11- Lofton K/ 24- Kugel R/ 33- Jitoboh J/	09:14	10-16	-6	1.0830	5	4	3	2	0.6720
3- Fudge A/ 5- Richard W/ 11- Lofton K/ 14- Reeves K/ 24- Kugel R/	04:47	13-9	4	2.7178	3	1	1	3	1.3771
5- Richard W/ 11- Lofton K/ 14- Reeves K/ 24- Kugel R/ 33- Jitoboh J/	03:52	15-7	8	3.8793	4	1	0	2	2.1802
3- Fudge A/ 4- Lane N/ 5- Richard W/ 10- Aberdeen D/ 24- Kugel R/	03:29	6-3	3	1.7225	2	0	0	1	1.3889
0- Jones M/ 4- Lane N/ 5- Richard W/ 24- Kugel R/ 33- Jitoboh J/	03:22	7-6	1	2.0792	3	0	1	2	1.4000
0- Jones M/ 3- Fudge A/ 5- Richard W/ 11- Lofton K/ 33- Jitoboh J/	02:20	3-4	-1	1.2857	2	0	0	0	1.0000
3- Fudge A/ 5- Richard W/ 10- Aberdeen D/ 11- Lofton K/ 14- Reeves K/	02:18	2-2	0	0.8696	4	0	1	1	0.4000
3- Fudge A/ 4- Lane N/ 11- Lofton K/ 14- Reeves K/ 24- Kugel R/	02:01	5-2	3	2.4793	4	0	1	0	1.1574
0- Jones M/ 3- Fudge A/ 10- Aberdeen D/ 14- Reeves K/ 24- Kugel R/	01:49	2-4	-2	1.1009	2	0	0	0	1.0638
4- Lane N/ 5- Richard W/ 11- Lofton K/ 14- Reeves K/ 33- Jitoboh J/	01:26	4-0	4	2.7907	1	1	0	0	1.3889
0- Jones M/ 5- Richard W/ 11- Lofton K/ 14- Reeves K/ 24- Kugel R/	01:09	5-7	-2	4.3478	2	0	1	1	1.2887
3- Fudge A/ 10- Aberdeen D/ 11- Lofton K/ 14- Reeves K/ 24- Kugel R/	00:54	0-0	0	0.0000	0	0	0	0	0.0000
3- Fudge A/ 4- Lane N/ 5- Richard W/ 11- Lofton K/ 14- Reeves K/	00:50	2-1	1	2.4000	2	0	0	0	4.5455
4- Lane N/ 5- Richard W/ 11- Lofton K/ 13- Szymczyk A/ 14- Reeves K/	00:42	2-3	-1	2.8571	0	0	0	1	2.0000
5- Richard W/ 10- Aberdeen D/ 11- Lofton K/ 24- Kugel R/ 33- Jitoboh J/	00:38	3-2	1	4.7368	0	0	0	0	1.5957
0- Jones M/ 4- Lane N/ 5- Richard W/ 11- Lofton K/ 33- Jitoboh J/	00:28	0-1	-1	0.0000	0	0	0	0	0.0000
5- Richard W/ 14- Reeves K/ 20- May J/ 21- Klatsky A/ 24- Kugel R/	00:22	0-0	0	0.0000	0	0	0	0	0.0000
3- Fudge A/ 4- Lane N/ 5- Richard W/ 11- Lofton K/ 24- Kugel R/	00:19	0-0	0	0.0000	1	0	0	0	0.0000