



Missouri at LSU

03/01/23 Maravich Assembly Center, Baton Rouge
2022-23 Men's Basketball

Game Time: 8:00 PM
Game Duration: 2:01
Attendance: 8,453

Officials: Terry Oglesby, Mike Nance, Brian Dorsey

Missouri - 81

Record: 22-8 (10-7)

NO.	Name	Min	FG	3P	FT	Rebounds			Fouls		TP	AS	TO	ST	Blocks		+/-
			M-A	M-A	M-A	OR	DR	TOT	PF	FD					BS	BA	
0	Mohamed Diarra	F 14:31	2-6	0-2	1-1	0	2	2	3	1	5	1	2	2	0	0	0
24	Kobe Brown	F 31:54	2-8	0-3	4-4	1	5	6	3	2	8	1	1	0	2	1	13
4	DeAndre Gholston	G 30:54	7-12	2-4	4-4	0	2	2	2	4	20	1	3	1	0	0	-2
5	D'Moi Hodge	G 33:13	8-16	5-11	2-2	2	1	3	3	2	23	1	0	5	0	1	9
10	Nick Honor	G 28:59	2-5	1-4	0-0	1	0	1	2	2	5	2	0	0	0	0	-2
35	Noah Carter	29:39	6-10	1-4	0-0	3	4	7	3	0	13	1	1	1	0	0	3
2	Tre Gomillion	04:19	0-0	0-0	0-0	1	0	1	1	1	0	0	0	0	0	0	-2
55	Sean East II	21:32	1-5	0-1	2-2	0	3	3	0	2	4	6	0	0	0	0	12
23	Aidan Shaw	04:59	1-1	1-1	0-0	1	0	1	1	0	3	0	0	0	0	0	-6
Team						1	2	3			0		0				
Totals			29-63	10-30	13-13	10	19	29	18	14	81	13	7	9	2	2	5

Shooting By Period		
1st FG%	12-30	40.0%
3PT%	6-18	33.3%
FT%	4-4	100%
2nd FG%	17-33	51.5%
3PT%	4-12	33.3%
FT%	9-9	100%
GM FG%	29-63	46.0%
3PT%	10-30	33.3%
FT%	13-13	100.0%

Dead Ball Rebounds: 0, 0

Technical Fouls::NONE

LSU - 76

Record: 13-17 (2-15)

NO.	Name	Min	FG	3P	FT	Rebounds			Fouls		TP	AS	TO	ST	Blocks		+/-
			M-A	M-A	M-A	OR	DR	TOT	PF	FD					BS	BA	
12	KJ Williams	F 38:48	6-12	4-7	8-8	4	10	14	3	5	24	2	3	1	0	1	-7
20	Derek Fountain	F 21:23	3-6	0-0	2-4	1	3	4	0	2	8	1	0	0	0	0	-1
1	Cam Hayes	G 32:09	1-7	1-4	2-2	0	3	3	4	2	5	4	4	1	0	0	-4
30	Parker Edwards	G 06:07	2-2	2-2	0-0	0	0	0	1	0	6	0	0	0	0	0	4
44	Adam Miller	G 37:25	5-10	5-9	2-2	0	0	0	0	3	17	3	6	0	0	0	-6
15	Tyrell Ward	27:50	1-5	1-4	2-2	1	3	4	4	1	5	3	0	2	0	0	-2
3	Justice Hill	07:51	0-0	0-0	0-0	0	0	0	1	0	0	3	1	0	0	0	-1
13	Jalen Reed	19:49	3-6	1-2	4-4	4	3	7	1	5	11	0	0	0	2	0	-2
0	Trae Hannibal	08:38	0-1	0-0	0-0	0	1	1	0	0	0	0	1	0	0	1	-6
Team						0	0	0			0		1				
Totals			21-49	14-28	20-22	10	23	33	14	18	76	16	16	4	2	2	-5

Shooting By Period		
1st FG%	12-25	48.0%
3PT%	11-15	73.3%
FT%	12-12	100%
2nd FG%	9-24	37.5%
3PT%	3-13	23.1%
FT%	8-10	80%
GM FG%	21-49	42.9%
3PT%	14-28	50.0%
FT%	20-22	90.9%

Dead Ball Rebounds: 1, 1

Technical Fouls::NONE

	MIS	LSU
Biggest lead	5 (2 nd 0:23)	19 (1 st 2:56)
Best Scoring Run	8(2 nd 18:36)	8(1 st 18:07)
Lead Changes	1	
Times Tied	4	
Time with Lead	01:37	36:12

Points from	MIS	LSU
Turnovers	20	2
Paint	32	12
Second Chance	8	15
Fast Breaks	22	7
Bench	20	16

	Period by Period Scoring		
	1st	2nd	TOT
MIS	34	47	81
LSU	47	29	76



Officials: Terry Oglesby, Mike Nance, Brian Dorsey

Period 1

Quarter Starters:

LSU	1 Hayes C	12 Williams K	20 Fountain D	30 Edwards P	44 Miller A
MIS	0 Diarra M	4 Gholston D	5 Hodge D	10 Honor N	24 Brown K

Game Time	LSU	Score	Diff	MIS
20:00	20 FOUNTAIN D jumpball won			0 DIARRA M jumpball lost
19:48	30 EDWARDS P 3pt FG , jump shot made (3)	3-0	3	
19:48	20 FOUNTAIN D assist (1)			
19:14				10 HONOR N 3pt FG , jump shot missed
19:11	20 FOUNTAIN D defensive rebound (1)			
18:51	30 EDWARDS P 3pt FG , jump shot made (6)	6-0	6	
18:51	44 MILLER A assist (1)			
18:32				24 BROWN K 3pt FG , jump shot missed
18:29	1 HAYES C defensive rebound (1)			
18:14	1 HAYES C 2pt FG in the paint, layup missed			
18:10	12 WILLIAMS K offensive rebound (1)			
18:07	12 WILLIAMS K 2pt FG second chance in the paint, layup missed			
18:07	20 FOUNTAIN D offensive rebound (2)			
18:07	20 FOUNTAIN D 2pt FG second chance in the paint, layup made (2)	8-0	8	
17:48		8-2	6	5 HODGE D 2pt FG in the paint, layup made (2)
17:48				0 DIARRA M assist (1)
17:26	12 WILLIAMS K foul drawn (1)			24 BROWN K foul shooting (1 - 1)
17:26	12 WILLIAMS K free throw 1 - 2 made (1)	9-2	7	
17:26	12 WILLIAMS K free throw 2 - 2 made (2)	10-2	8	
17:12				0 DIARRA M 3pt FG , jump shot missed
17:08	12 WILLIAMS K defensive rebound (2)			
17:00	20 FOUNTAIN D 2pt FG in the paint, layup missed			
16:57	12 WILLIAMS K offensive rebound (3)			
16:44	12 WILLIAMS K 3pt FG second chance, jump shot made (5)	13-2	11	
16:44	1 HAYES C assist (1)			
16:26	1 HAYES C steal (1)			4 GHOLSTON D turnover bad pass (1)
16:10	12 WILLIAMS K 3pt FG from turnover, jump shot missed			
16:06				24 BROWN K defensive rebound (1)
15:57		13-5	8	5 HODGE D 3pt FG , jump shot made (5)
15:57				4 GHOLSTON D assist (1)
15:33	20 FOUNTAIN D 2pt FG in the paint, layup missed			
15:30				defensive rebound (2)
15:30	Timeout media			
15:30	30 EDWARDS P substitution out			
15:30	15 WARD T substitution in			
15:30				0 DIARRA M substitution out
15:30				35 CARTER N substitution in
15:12				5 HODGE D 3pt FG , jump shot missed
15:09	20 FOUNTAIN D defensive rebound (3)			
14:52	1 HAYES C turnover bad pass (1)			4 GHOLSTON D steal (1)
14:46				4 GHOLSTON D turnover bad pass (2)
14:46				10 HONOR N substitution out



Missouri at LSU

03/01/23 Maravich Assembly Center, Baton Rouge
2022-23 Men's Basketball

Game Time: 8:00 PM
Game Duration: 2:01
Attendance: 8,453

Officials: Terry Oglesby, Mike Nance, Brian Dorsey

Game Time	LSU	Score	Diff	MIS
14:46				2 GOMILLION T substitution in
14:32	44 MILLER A turnover bad pass (1)			
14:14				35 CARTER N 3pt FG from turnover, jump shot missed
14:12				2 GOMILLION T offensive rebound (1)
14:12	1 HAYES C foul personal (1 - 1)			2 GOMILLION T foul drawn (1)
14:12				5 HODGE D substitution out
14:12				55 EAST II S substitution in
14:05				35 CARTER N turnover travel (1)
13:47	12 WILLIAMS K 2pt FG from turnover in the paint, layup blocked			
13:47				24 BROWN K block (1)
13:43				35 CARTER N defensive rebound (1)
13:32		13-8	5	4 GHOLSTON D 3pt FG , jump shot made (3)
13:19	12 WILLIAMS K foul drawn (2)			35 CARTER N foul shooting (1 - 2)
13:19	12 WILLIAMS K free throw 1 - 2 made (6)	14-8	6	
13:19	1 HAYES C substitution out			
13:19	20 FOUNTAIN D substitution out			
13:19	3 HILL J substitution in			
13:19	13 REED J substitution in			
13:19	12 WILLIAMS K free throw 2 - 2 made (7)	15-8	7	
13:01		15-11	4	4 GHOLSTON D 3pt FG , jump shot made (6)
13:01				35 CARTER N assist (1)
12:36	13 REED J foul drawn (1)			2 GOMILLION T foul personal (1 - 3)
12:21	13 REED J foul drawn (2)			4 GHOLSTON D foul personal (1 - 4)
12:21				24 BROWN K substitution out
12:21				23 SHAW A substitution in
12:16	44 MILLER A 3pt FG , jump shot made (3)	18-11	7	
12:16	3 HILL J assist (1)			
12:07				4 GHOLSTON D 3pt FG , jump shot missed
12:04				23 SHAW A offensive rebound (1)
11:57	15 WARD T steal (1)			4 GHOLSTON D turnover lost ball (3)
11:49	44 MILLER A 2pt FG from turnover in the paint, layup missed			
11:45				55 EAST II S defensive rebound (1)
11:39				55 EAST II S 2pt FG in the paint, jump shot missed
11:35	13 REED J defensive rebound (1)			
11:32	44 MILLER A 3pt FG , jump shot missed			
11:29				55 EAST II S defensive rebound (2)
11:18		18-14	4	23 SHAW A 3pt FG , jump shot made (3)
11:18				55 EAST II S assist (1)
10:48	13 REED J 3pt FG , jump shot made (3)	21-14	7	
10:48	44 MILLER A assist (2)			
10:36				55 EAST II S 3pt FG , jump shot missed
10:32	15 WARD T defensive rebound (1)			
10:28	44 MILLER A 3pt FG fast break, jump shot made (6)	24-14	10	
10:28	15 WARD T assist (1)			
10:27				Timeout media
10:27				2 GOMILLION T substitution out
10:27				4 GHOLSTON D substitution out
10:27				5 HODGE D substitution in
10:27				24 BROWN K substitution in



Official Basketball Play by Play - First Half
Missouri at LSU
 03/01/23 Maravich Assembly Center, Baton Rouge
 2022-23 Men's Basketball

Game Time: 8:00 PM
Game Duration: 2:01
Attendance: 8,453

Officials: Terry Oglesby, Mike Nance, Brian Dorsey

Game Time	LSU	Score	Diff	MIS
10:06		24-16	8	35 CARTER N 2pt FG in the paint, layup made (2)
10:06				24 BROWN K assist (1)
09:44	15 WARD T 3pt FG , jump shot missed			
09:40				35 CARTER N defensive rebound (2)
09:21				55 EAST II S 2pt FG in the paint, jump shot missed
09:18				5 HODGE D offensive rebound (1)
09:16	13 REED J substitution out			
09:16	44 MILLER A substitution out			
09:16	0 HANNIBAL T substitution in			
09:16	20 FOUNTAIN D substitution in			
09:16				10 HONOR N substitution in
09:16				23 SHAW A substitution out
09:15				5 HODGE D 2pt FG second chance in the paint, layup missed
09:12	12 WILLIAMS K defensive rebound (4)			
09:07	15 WARD T foul drawn (1)			24 BROWN K foul shooting (2 - 5)
09:07	15 WARD T free throw fast break 1 - 2 made (1)	25-16	9	
09:07	15 WARD T free throw fast break 2 - 2 made (2)	26-16	10	
08:58	3 HILL J foul personal (1 - 2)			55 EAST II S foul drawn (1)
08:40	15 WARD T foul personal (1 - 3)			10 HONOR N foul drawn (1)
08:40	3 HILL J substitution out			
08:40	1 HAYES C substitution in			
08:29				35 CARTER N 3pt FG , jump shot missed
08:27	defensive dead ball rebound (1)			
08:13	12 WILLIAMS K 3pt FG , jump shot made (10)	29-16	13	
08:13	1 HAYES C assist (2)			
08:01				24 BROWN K 3pt FG , jump shot missed
07:58	12 WILLIAMS K defensive rebound (5)			
07:55	0 HANNIBAL T turnover bad pass (1)			5 HODGE D steal (1)
07:44		29-18	11	24 BROWN K 2pt FG from turnover in the paint, dunk, made (2)
07:44				55 EAST II S assist (2)
07:23	1 HAYES C 2pt FG outside the paint, jump shot missed			
07:20				24 BROWN K defensive rebound (2)
07:17				24 BROWN K 2pt FG in the paint, layup missed
07:13				35 CARTER N offensive rebound (3)
07:13		29-20	9	35 CARTER N 2pt FG second chance in the paint, layup made (4)
06:41	turnover shot clock (4)			
06:41		Timeout media		
06:41	15 WARD T substitution out			
06:41	44 MILLER A substitution in			
06:22				5 HODGE D 3pt FG from turnover, jump shot missed
06:18	0 HANNIBAL T defensive rebound (1)			
05:58	0 HANNIBAL T 2pt FG in the paint, jump shot blocked			
05:58				24 BROWN K block (2)
05:54				24 BROWN K defensive rebound (3)
05:41				35 CARTER N 2pt FG in the paint, dunk, missed
05:37	12 WILLIAMS K defensive rebound (6)			
05:34	1 HAYES C foul drawn (1)			10 HONOR N foul personal (1 - 6)
05:34	0 HANNIBAL T substitution out			



Missouri at LSU

03/01/23 Maravich Assembly Center, Baton Rouge
2022-23 Men's Basketball

Game Time: 8:00 PM
Game Duration: 2:01
Attendance: 8,453

Officials: Terry Oglesby, Mike Nance, Brian Dorsey

Game Time	LSU	Score	Diff	MIS
05:34	15 WARD T substitution in			
05:34				55 EAST II S substitution out
05:34				4 GHOLSTON D substitution in
05:31	12 WILLIAMS K 3pt FG , jump shot made (13)	32-20	12	
05:31	15 WARD T assist (2)			
05:15		32-22	10	4 GHOLSTON D 2pt FG in the paint, layup made (8)
04:52	44 MILLER A 3pt FG , jump shot made (9)	35-22	13	
04:52	15 WARD T assist (3)			
04:33	15 WARD T steal (2)			24 BROWN K turnover bad pass (1)
04:29	44 MILLER A foul drawn (1)			24 BROWN K foul shooting (3 - 7)
04:29	44 MILLER A free throw fast break 1 - 2 made (10)	36-22	14	
04:29	12 WILLIAMS K substitution out			
04:29	13 REED J substitution in			
04:29				24 BROWN K substitution out
04:29				23 SHAW A substitution in
04:29	44 MILLER A free throw fast break 2 - 2 made (11)	37-22	15	
04:10				10 HONOR N 3pt FG , jump shot missed
04:06	15 WARD T defensive rebound (2)			
03:46	1 HAYES C 3pt FG , jump shot made (3)	40-22	18	
03:46	44 MILLER A assist (3)			
03:44				Timeout 30 Sec
03:18				4 GHOLSTON D 2pt FG outside the paint, jump shot missed
03:17				5 HODGE D offensive rebound (2)
03:17	15 WARD T foul shooting (2 - 4)			5 HODGE D foul drawn (1)
03:17		40-23	17	5 HODGE D free throw 1 - 2 made (6)
03:17				23 SHAW A substitution out
03:17				0 DIARRA M substitution in
03:17		40-24	16	5 HODGE D free throw 2 - 2 made (7)
03:17	20 FOUNTAIN D substitution out			
03:17	12 WILLIAMS K substitution in			
02:56	44 MILLER A 3pt FG , jump shot made (14)	43-24	19	
02:56	1 HAYES C assist (3)			
02:39				0 DIARRA M turnover travel (1)
02:27	12 WILLIAMS K 2pt FG from turnover in the paint, jump shot missed			
02:25				5 HODGE D defensive rebound (3)
02:22		43-27	16	10 HONOR N 3pt FG fast break, jump shot made (3)
01:59	12 WILLIAMS K foul drawn (3)			35 CARTER N foul shooting (2 - 8)
01:59	12 WILLIAMS K free throw 1 - 2 made (14)	44-27	17	
01:59	15 WARD T substitution out			
01:59	30 EDWARDS P substitution in			
01:59	12 WILLIAMS K free throw 2 - 2 made (15)	45-27	18	
01:44	12 WILLIAMS K steal (1)			0 DIARRA M turnover bad pass (2)
01:42	1 HAYES C turnover bad pass (2)			5 HODGE D steal (2)
01:37		45-30	15	5 HODGE D 3pt FG fast break from turnover, jump shot made (10)
01:37				10 HONOR N assist (1)
01:17	12 WILLIAMS K 3pt FG , jump shot missed			
01:13				0 DIARRA M defensive rebound (1)
01:09				5 HODGE D 3pt FG , jump shot missed



Official Basketball Play by Play - First Half

Missouri at LSU

03/01/23 Maravich Assembly Center, Baton Rouge
2022-23 Men's Basketball

Game Time: 8:00 PM
Game Duration: 2:01
Attendance: 8,453

Officials: Terry Oglesby, Mike Nance, Brian Dorsey

Game Time	LSU	Score	Diff	MIS
01:06	1 HAYES C defensive rebound (2)			
00:53	12 WILLIAMS K turnover 3 seconds (1)			
00:41	30 EDWARDS P foul shooting (1 - 5)			4 GHOLSTON D foul drawn (1)
00:41		45-31	14	4 GHOLSTON D free throw 1 - 2 made (9)
00:41				35 CARTER N substitution out
00:41				23 SHAW A substitution in
00:41		45-32	13	4 GHOLSTON D free throw 2 - 2 made (10)
00:21	1 HAYES C foul drawn (2)			23 SHAW A foul personal (1 - 9)
00:21	30 EDWARDS P substitution out			
00:21	0 HANNIBAL T substitution in			
00:21	1 HAYES C 1&1 free throw 1 made (4)	46-32	14	
00:21				0 DIARRA M substitution out
00:21				35 CARTER N substitution in
00:21	1 HAYES C 1&1 free throw 2 made (5)	47-32	15	
00:00		47-34	13	4 GHOLSTON D 2pt FG outside the paint, jump shot made (12)
END OF PERIOD				
LSU 47-34 MIS				



Missouri at LSU

03/01/23 Maravich Assembly Center, Baton Rouge
2022-23 Men's Basketball

Game Time: 8:00 PM
Game Duration: 2:01
Attendance: 8,453

Officials: Terry Oglesby, Mike Nance, Brian Dorsey

Missouri - 34

NO.	Name	Min	FG	3P	FT	Rebounds			Fouls		TP	AS	TO	ST	Blocks		+/-
			M-A	M-A	M-A	OR	DR	TOT	PF	FD					BS	BA	
0	Mohamed Diarra	F 07:25	0-1	0-1	0-0	0	1	1	0	0	0	1	2	0	0	0	-5
24	Kobe Brown	F 13:37	1-4	0-2	0-0	0	3	3	3	0	2	1	1	0	2	0	-8
4	DeAndre Gholston	G 15:07	4-6	2-3	2-2	0	0	0	1	1	12	1	3	1	0	0	-14
5	D'Moi Hodge	G 16:15	3-7	2-5	2-2	2	1	3	0	1	10	0	0	2	0	0	-11
10	Nick Honor	G 14:30	1-3	1-3	0-0	0	0	0	1	1	3	1	0	0	0	0	-13
35	Noah Carter	15:10	2-5	0-2	0-0	1	2	3	2	0	4	1	1	0	0	0	-5
2	Tre Gomillion	04:19	0-0	0-0	0-0	1	0	1	1	1	0	0	0	0	0	0	-2
55	Sean East II	08:38	0-3	0-1	0-0	0	2	2	0	1	0	2	0	0	0	0	-1
23	Aidan Shaw	04:59	1-1	1-1	0-0	1	0	1	1	0	3	0	0	0	0	0	-6
Team						0	1	1			0			0			
Totals			12-30	6-18	4-4	5	10	15	9	5	34	7	7	3	2	0	-13

Shooting By Period		
1st FG%	12-30	40.0%
3PT%	6-18	33.3%
FT%	4-4	100%
GM FG%	12-30	40.0%
3PT%	6-18	33.3%
FT%	4-4	100.0%

Dead Ball Rebounds: 0, 0

Technical Fouls::NONE

LSU - 47

NO.	Name	Min	FG	3P	FT	Rebounds			Fouls		TP	AS	TO	ST	Blocks		+/-
			M-A	M-A	M-A	OR	DR	TOT	PF	FD					BS	BA	
12	KJ Williams	F 18:48	3-8	3-5	6-6	2	4	6	0	3	15	0	1	1	0	1	11
20	Derek Fountain	F 12:40	1-3	0-0	0-0	1	2	3	0	0	2	1	0	0	0	0	14
1	Cam Hayes	G 15:21	1-3	1-1	2-2	0	2	2	1	2	5	3	2	1	0	0	9
30	Parker Edwards	G 06:07	2-2	2-2	0-0	0	0	0	1	0	6	0	0	0	0	0	4
44	Adam Miller	G 17:25	4-6	4-5	2-2	0	0	0	0	1	14	3	1	0	0	0	12
15	Tyrell Ward	12:24	0-1	0-1	2-2	0	2	2	2	1	2	3	0	2	0	0	9
3	Justice Hill	04:39	0-0	0-0	0-0	0	0	0	1	0	0	1	0	0	0	0	4
13	Jalen Reed	08:32	1-1	1-1	0-0	0	1	1	0	2	3	0	0	0	0	0	1
0	Trae Hannibal	04:04	0-1	0-0	0-0	0	1	1	0	0	0	0	1	0	0	1	1
Team						0	0	0			0		1				
Totals			12-25	11-15	12-12	3	12	15	5	9	47	11	6	4	0	2	13

Shooting By Period		
1st FG%	12-25	48.0%
3PT%	11-15	73.3%
FT%	12-12	100%
GM FG%	12-25	48.0%
3PT%	11-15	73.3%
FT%	12-12	100.0%

Dead Ball Rebounds: 0, 1

Technical Fouls::NONE

	MIS	LSU
Biggest lead	0 (1 st 20:00)	19 (1 st 2:56)
Best Scoring Run	6(1 st 13:32)	8(1 st 18:07)
Lead Changes	0	
Times Tied	0	
Time with Lead	00:00	19:48

Points from	MIS	LSU
Turnovers	7	2
Paint	10	2
Second Chance	4	5
Fast Breaks	6	7
Bench	7	5

	Period by Period Scoring		
	1st	2nd	TOT
MIS	34	47	81
LSU	47	29	76



Missouri at LSU

Period 2

Quarter Starters:

LSU	1 Hayes C	12 Williams K	15 Ward T	20 Fountain D	44 Miller A
MIS	0 Diarra M	4 Gholston D	5 Hodge D	10 Honor N	24 Brown K

Game Time	LSU	Score	Diff	MIS
20:00	0 HANNIBAL T substitution out			
20:00	13 REED J substitution out			
20:00	15 WARD T substitution in			
20:00	20 FOUNTAIN D substitution in			
20:00				23 SHAW A substitution out
20:00				35 CARTER N substitution out
20:00				0 DIARRA M substitution in
20:00				24 BROWN K substitution in
19:44		47-36	11	4 GHOLSTON D 2pt FG outside the paint, jump shot made (14)
19:28	44 MILLER A turnover bad pass (2)			0 DIARRA M steal (1)
19:23		47-38	9	5 HODGE D 2pt FG fast break from turnover in the paint, layup made (12)
19:18	Timeout 30 Sec			
19:03	44 MILLER A 3pt FG , jump shot missed			
19:00				4 GHOLSTON D defensive rebound (1)
19:00	12 WILLIAMS K foul personal (1 - 1)			4 GHOLSTON D foul drawn (2)
18:36		47-40	7	4 GHOLSTON D 2pt FG in the paint, layup made (16)
18:20	20 FOUNTAIN D foul drawn (1)			0 DIARRA M foul shooting (1 - 1)
18:20	20 FOUNTAIN D free throw 1 - 2 made (3)	48-40	8	
18:20	20 FOUNTAIN D free throw 2 - 2 made (4)	49-40	9	
18:10		49-42	7	0 DIARRA M 2pt FG in the paint, jump shot made (2)
18:10				10 HONOR N assist (2)
18:10	12 WILLIAMS K foul shooting (2 - 2)			0 DIARRA M foul drawn (1)
18:10		49-43	6	0 DIARRA M free throw 1 - 1 made (3)
17:51	44 MILLER A foul drawn (2)			5 HODGE D foul personal (1 - 2)
17:47	1 HAYES C 3pt FG , jump shot missed			
17:44				4 GHOLSTON D defensive rebound (2)
17:37		49-45	4	4 GHOLSTON D 2pt FG in the paint, layup made (18)
17:15	15 WARD T 3pt FG , jump shot made (5)	52-45	7	
17:15	12 WILLIAMS K assist (1)			
16:48				0 DIARRA M 2pt FG in the paint, layup missed
16:46	12 WILLIAMS K defensive rebound (7)			
16:31	44 MILLER A turnover lost ball (3)			0 DIARRA M steal (2)
16:26				5 HODGE D 3pt FG from turnover, jump shot missed
16:23	20 FOUNTAIN D defensive rebound (4)			
16:05	15 WARD T 3pt FG , jump shot missed			
16:02				0 DIARRA M defensive rebound (2)
15:59	15 WARD T foul personal (3 - 3)			5 HODGE D foul drawn (2)
15:59				Timeout media
15:59	15 WARD T substitution out			
15:59	0 HANNIBAL T substitution in			
15:38	1 HAYES C foul shooting (2 - 4)			24 BROWN K foul drawn (1)
15:38		52-46	6	24 BROWN K free throw 1 - 2 made (3)



Missouri at LSU

Officials: Terry Oglesby, Mike Nance, Brian Dorsey

Game Time	LSU	Score	Diff	MIS
15:38		52-47	5	24 BROWN K free throw 2 - 2 made (4)
15:23	20 FOUNTAIN D 2pt FG in the paint, layup made (6)	54-47	7	
15:02				0 DIARRA M 3pt FG , jump shot missed
14:59				10 HONOR N offensive rebound (1)
14:57				10 HONOR N 3pt FG second chance, jump shot missed
14:54	12 WILLIAMS K defensive rebound (8)			
14:45	44 MILLER A turnover lost ball (4)			5 HODGE D steal (3)
14:42		54-49	5	0 DIARRA M 2pt FG fast break from turnover in the paint, dunk, made (5)
14:42				5 HODGE D assist (1)
14:37				Timeout 30 Sec
14:37	1 HAYES C substitution out			
14:37	3 HILL J substitution in			
14:37				24 BROWN K substitution out
14:37				35 CARTER N substitution in
14:20	44 MILLER A foul drawn (3)			5 HODGE D foul personal (2 - 3)
14:08	44 MILLER A 3pt FG , jump shot made (17)	57-49	8	
14:08	3 HILL J assist (2)			
13:53				0 DIARRA M 2pt FG in the paint, layup missed
13:53	12 WILLIAMS K defensive rebound (9)			
13:53	12 WILLIAMS K foul drawn (4)			0 DIARRA M foul personal (2 - 4)
13:38	20 FOUNTAIN D foul drawn (2)			4 GHOLSTON D foul shooting (2 - 5)
13:38	20 FOUNTAIN D free throw 1 - 2 missed			
13:38	offensive dead ball rebound (2)			
13:38				0 DIARRA M substitution out
13:38				4 GHOLSTON D substitution out
13:38				24 BROWN K substitution in
13:38				55 EAST II S substitution in
13:38	20 FOUNTAIN D free throw 2 - 2 missed			
13:37				35 CARTER N defensive rebound (4)
13:08				5 HODGE D 3pt FG , jump shot missed
13:06				35 CARTER N offensive rebound (5)
13:06		57-51	6	35 CARTER N 2pt FG second chance in the paint, layup made (6)
12:41	20 FOUNTAIN D 2pt FG in the paint, dunk, made (8)	59-51	8	
12:41	3 HILL J assist (3)			
12:15		59-53	6	24 BROWN K 2pt FG in the paint, hook shot made (6)
12:02	20 FOUNTAIN D 2pt FG in the paint, dunk, missed			
11:57				55 EAST II S defensive rebound (3)
11:54		59-56	3	5 HODGE D 3pt FG fast break, jump shot made (15)
11:54				55 EAST II S assist (3)
11:34	3 HILL J turnover bad pass (1)			5 HODGE D steal (4)
11:27		59-59	0	5 HODGE D 3pt FG fast break from turnover, jump shot made (18)
11:27				55 EAST II S assist (4)
11:25	Timeout 30 Sec			
11:25	0 HANNIBAL T substitution out			
11:25	3 HILL J substitution out			
11:25	20 FOUNTAIN D substitution out			
11:25	1 HAYES C substitution in			



Missouri at LSU

03/01/23 Maravich Assembly Center, Baton Rouge
2022-23 Men's Basketball

Game Time: 8:00 PM
Game Duration: 2:01
Attendance: 8,453

Officials: Terry Oglesby, Mike Nance, Brian Dorsey

Game Time	LSU	Score	Diff	MIS
11:25	13 REED J substitution in			
11:25	15 WARD T substitution in			
11:11	13 REED J foul drawn (3)			35 CARTER N foul personal (3 - 6)
10:54	15 WARD T 3pt FG , jump shot missed			
10:50	13 REED J offensive rebound (2)			
10:50	13 REED J 2pt FG second chance in the paint, dunk, made (5)	61-59	2	
10:36	1 HAYES C foul personal (3 - 5)			10 HONOR N foul drawn (2)
10:17				5 HODGE D 2pt FG in the paint, layup blocked
10:17	13 REED J block (1)			
10:15	13 REED J defensive rebound (3)			
10:14	1 HAYES C turnover bad pass (3)			5 HODGE D steal (5)
10:09		61-61	0	5 HODGE D 2pt FG fast break from turnover in the paint, layup made (20)
09:54	12 WILLIAMS K foul drawn (5)			10 HONOR N foul shooting (2 - 7)
09:54	12 WILLIAMS K free throw 1 - 2 made (16)	62-61	1	
09:54	12 WILLIAMS K free throw 2 - 2 made (17)	63-61	2	
09:33				24 BROWN K 2pt FG in the paint, layup missed
09:31				24 BROWN K offensive rebound (4)
09:29				24 BROWN K 2pt FG second chance in the paint, jump shot blocked
09:29	13 REED J block (2)			
09:25	13 REED J defensive rebound (4)			
09:25	12 WILLIAMS K turnover lost ball (2)			
09:25				5 HODGE D substitution out
09:25				4 GHOLSTON D substitution in
09:09				24 BROWN K 3pt FG from turnover, jump shot missed
09:06	12 WILLIAMS K defensive rebound (10)			
08:50	12 WILLIAMS K 3pt FG , jump shot made (20)	66-61	5	
08:50	1 HAYES C assist (4)			
08:24		66-64	2	35 CARTER N 3pt FG , jump shot made (9)
08:24				55 EAST II S assist (5)
07:58	13 REED J 3pt FG , jump shot missed			
07:54	13 REED J offensive rebound (5)			
07:53	13 REED J 2pt FG second chance in the paint, layup made (7)	68-64	4	
07:53	12 WILLIAMS K assist (2)			
07:39		68-66	2	10 HONOR N 2pt FG in the paint, jump shot made (5)
07:15	44 MILLER A 3pt FG , jump shot missed			
07:10	15 WARD T offensive rebound (3)			
07:10	15 WARD T 2pt FG second chance in the paint, layup missed			
07:06	12 WILLIAMS K offensive rebound (11)			
07:06	12 WILLIAMS K 2pt FG second chance in the paint, layup made (22)	70-66	4	
06:39				35 CARTER N 3pt FG , jump shot missed
06:36	1 HAYES C defensive rebound (3)			
06:23	12 WILLIAMS K foul offensive (3 - 6)			4 GHOLSTON D foul drawn (3)
06:23	12 WILLIAMS K turnover offensive (3)			
06:23	Timeout media			
06:23				24 BROWN K substitution out
06:23				55 EAST II S substitution out
06:23				0 DIARRA M substitution in



Missouri at LSU

Officials: Terry Oglesby, Mike Nance, Brian Dorsey

Game Time	LSU	Score	Diff	MIS
06:23				5 HODGE D substitution in
06:05				4 GHOLSTON D 2pt FG from turnover in the paint, jump shot missed
06:02	12 WILLIAMS K defensive rebound (12)			
05:41	13 REED J 2pt FG in the paint, layup missed			
05:39	13 REED J offensive rebound (6)			
05:39	13 REED J foul drawn (4)			0 DIARRA M foul shooting (3 - 8)
05:39				0 DIARRA M substitution out
05:39				10 HONOR N substitution out
05:39				24 BROWN K substitution in
05:39				55 EAST II S substitution in
05:39	13 REED J free throw 1 - 2 made (8)	71-66	5	
05:39	13 REED J free throw 2 - 2 made (9)	72-66	6	
05:17		72-68	4	35 CARTER N 2pt FG in the paint, layup made (11)
05:01	1 HAYES C turnover bad pass (4)			
04:47				5 HODGE D 3pt FG from turnover, jump shot missed
04:45				offensive rebound (24)
04:31				4 GHOLSTON D 2pt FG from turnover second chance outside the paint, jump shot missed
04:28	15 WARD T defensive rebound (4)			
04:15	44 MILLER A turnover bad pass (5)			
03:57	13 REED J foul shooting (1 - 7)			24 BROWN K foul drawn (2)
03:57	Timeout media			
03:57		72-69	3	24 BROWN K free throw 1 - 2 made (7)
03:57		72-70	2	24 BROWN K free throw 2 - 2 made (8)
03:32	1 HAYES C 2pt FG outside the paint, jump shot missed			
03:30				24 BROWN K defensive rebound (5)
03:01		72-72	0	55 EAST II S 2pt FG outside the paint, jump shot made (2)
02:38	12 WILLIAMS K 2pt FG outside the paint, jump shot made (24)	74-72	2	
02:24				4 GHOLSTON D 3pt FG , jump shot missed
02:21				35 CARTER N offensive rebound (6)
02:21		74-74	0	35 CARTER N 2pt FG second chance in the paint, layup made (13)
01:49	1 HAYES C 3pt FG , jump shot missed			
01:47				defensive rebound (27)
01:37		74-77	-3	5 HODGE D 3pt FG , jump shot made (23)
01:37				55 EAST II S assist (6)
01:13	13 REED J 2pt FG outside the paint, jump shot missed			
01:10	12 WILLIAMS K offensive rebound (13)			
01:09	44 MILLER A 3pt FG second chance, jump shot missed			
01:04				35 CARTER N defensive rebound (7)
00:41				55 EAST II S 2pt FG outside the paint, jump shot missed
00:38	12 WILLIAMS K defensive rebound (14)			
00:36	Timeout 60 Sec			
00:25	44 MILLER A turnover lost ball (6)			35 CARTER N steal (1)
00:23	1 HAYES C foul personal (4 - 8)			55 EAST II S foul drawn (2)
00:23		74-78	-4	55 EAST II S 1&1 free throw 1 made (3)
00:23		74-79	-5	55 EAST II S 1&1 free throw 2 made (4)
00:11	12 WILLIAMS K 3pt FG , jump shot missed			
00:08	13 REED J offensive rebound (7)			



Official Basketball Play by Play - Second Half

Missouri at LSU

03/01/23 Maravich Assembly Center, Baton Rouge
2022-23 Men's Basketball

Game Time: 8:00 PM
Game Duration: 2:01
Attendance: 8,453

Officials: Terry Oglesby, Mike Nance, Brian Dorsey

Game Time	LSU	Score	Diff	MIS
00:08	13 REED J foul drawn (5)			5 HODGE D foul shooting (3 - 9)
00:08	13 REED J free throw 1 - 2 made (10)	75-79	-4	
00:08	13 REED J free throw 2 - 2 made (11)	76-79	-3	
00:08	13 REED J substitution out			
00:08	20 FOUNTAIN D substitution in			
00:08				Timeout 60 Sec
00:08				35 CARTER N substitution out
00:08				10 HONOR N substitution in
00:06	15 WARD T foul personal (4 - 9)			4 GHOLSTON D foul drawn (4)
00:06		76-80	-4	4 GHOLSTON D 1&1 free throw 1 made (19)
00:06		76-81	-5	4 GHOLSTON D 1&1 free throw 2 made (20)
00:00	1 HAYES C 3pt FG , jump shot missed			
00:00				24 BROWN K defensive rebound (6)
END OF GAME				
LSU 76-81 MIS				



Missouri at LSU

03/01/23 Maravich Assembly Center, Baton Rouge
2022-23 Men's Basketball

Game Time: 8:00 PM
Game Duration: 2:01
Attendance: 8,453

Officials: Terry Oglesby, Mike Nance, Brian Dorsey

Missouri - 47

NO.	Name	F	Min	FG	3P	FT	Rebounds			Fouls		TP	AS	TO	ST	Blocks		+/-
				M-A	M-A	M-A	OR	DR	TOT	PF	FD					BS	BA	
0	Mohamed Diarra	F	07:06	2-5	0-1	1-1	0	1	1	3	1	5	0	0	2	0	0	5
24	Kobe Brown	F	18:17	1-4	0-1	4-4	1	2	3	0	2	6	0	0	0	0	1	21
4	DeAndre Gholston	G	15:47	3-6	0-1	2-2	0	2	2	1	3	8	0	0	0	0	0	12
5	D'Moi Hodge	G	16:58	5-9	3-6	0-0	0	0	0	3	1	13	1	0	3	0	1	20
10	Nick Honor	G	14:29	1-2	0-1	0-0	1	0	1	1	1	2	1	0	0	0	0	11
23	Aidan Shaw		00:00	0-0	0-0	0-0	0	0	0	0	0	0	0	0	0	0	0	0
35	Noah Carter		14:29	4-5	1-2	0-0	2	2	4	1	0	9	0	0	1	0	0	8
55	Sean East II		12:54	1-2	0-0	2-2	0	1	1	0	1	4	4	0	0	0	0	13
Team							1	1	2			0		0				
Totals				17-33	4-12	9-9	5	9	14	9	9	47	6	0	6	0	2	18

Shooting By Period		
2 nd FG%	17-33	51.5%
3PT%	4-12	33.3%
FT%	9-9	100%
GM FG%	17-33	51.5%
3PT%	4-12	33.3%
FT%	9-9	100.0%

Dead Ball Rebounds: 0, 0

Technical Fouls::NONE

LSU - 29

NO.	Name	F	Min	FG	3P	FT	Rebounds			Fouls		TP	AS	TO	ST	Blocks		+/-
				M-A	M-A	M-A	OR	DR	TOT	PF	FD					BS	BA	
12	KJ Williams	F	20:00	3-4	1-2	2-2	2	6	8	3	2	9	2	2	0	0	0	-18
20	Derek Fountain	F	08:43	2-3	0-0	2-4	0	1	1	0	2	6	0	0	0	0	0	-15
1	Cam Hayes	G	16:48	0-4	0-3	0-0	0	1	1	3	0	0	1	2	0	0	0	-13
30	Parker Edwards	G	00:00	0-0	0-0	0-0	0	0	0	0	0	0	0	0	0	0	0	0
44	Adam Miller	G	20:00	1-4	1-4	0-0	0	0	0	0	2	3	0	5	0	0	0	-18
15	Tyrell Ward		15:26	1-4	1-3	0-0	1	1	2	2	0	3	0	0	0	0	0	-11
0	Trae Hannibal		04:34	0-0	0-0	0-0	0	0	0	0	0	0	0	0	0	0	0	-7
3	Justice Hill		03:12	0-0	0-0	0-0	0	0	0	0	0	0	2	1	0	0	0	-5
13	Jalen Reed		11:17	2-5	0-1	4-4	4	2	6	1	3	8	0	0	0	2	0	-3
Team							0	0	0			0		0				
Totals				9-24	3-13	8-10	7	11	18	9	9	29	5	10	0	2	0	-18

Shooting By Period		
2 nd FG%	9-24	37.5%
3PT%	3-13	23.1%
FT%	8-10	80%
GM FG%	9-24	37.5%
3PT%	3-13	23.1%
FT%	8-10	80.0%

Dead Ball Rebounds: 1, 0

Technical Fouls::NONE

	MIS	LSU
Biggest lead	5 (2 nd 0:23)	11 (2 nd 19:44)
Best Scoring Run	8 (2 nd 11:27)	5 (2 nd 8:50)
Lead Changes	1	
Times Tied	4	
Time with Lead	01:37	16:08

Points from	MIS	LSU
Turnovers	13	0
Paint	22	10
Second Chance	4	10
Fast Breaks	16	0
Bench	13	11

	Period by Period Scoring		
	1st	2nd	TOT
MIS	34	47	81
LSU	47	29	76



Missouri at LSU

03/01/23 Maravich Assembly Center, Baton Rouge
2022-23 Men's Basketball

Game Time: 8:00 PM
Game Duration: 2:01
Attendance: 8,453

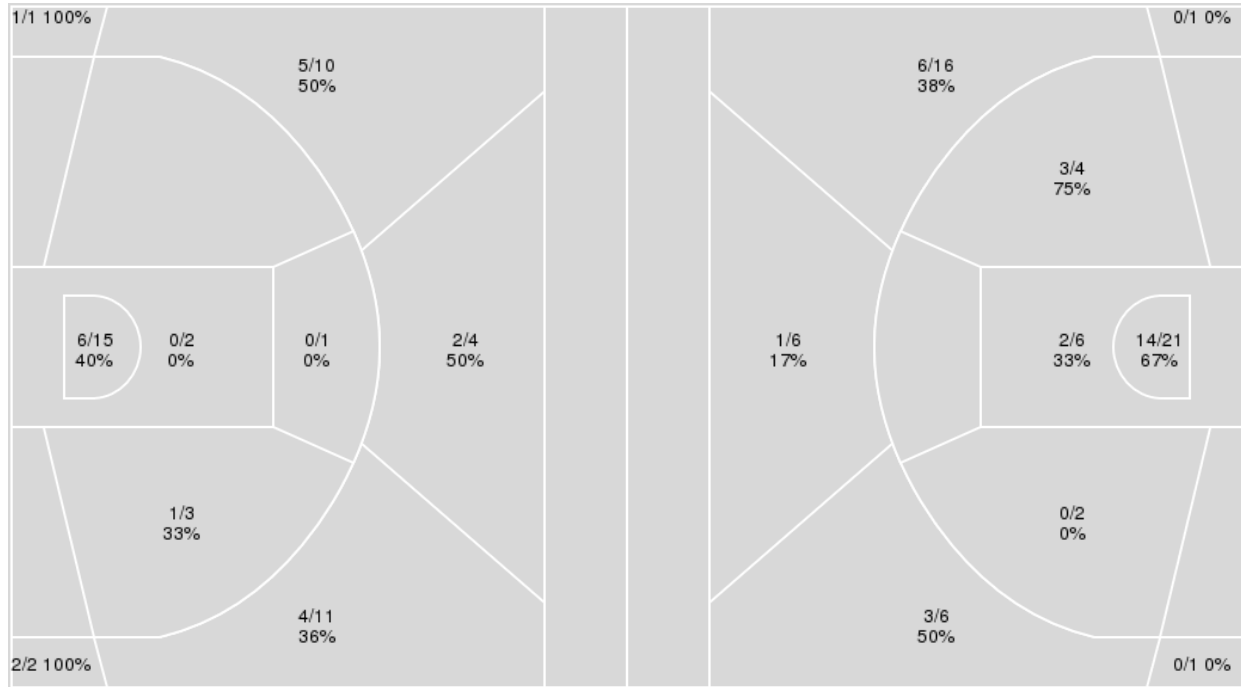
Officials: Terry Oglesby, Mike Nance, Brian Dorsey

{ Players => 0, 1, 2, 3, 4, 5, 10, 11, 12, 13, 15, 20, 21, 25, 30, 34, 44; }
FG Types => All; Results => All;

{ Players => 0, 1, 2, 4, 5, 10, 11, 12, 13, 23, 24, 31, 35, 45, 55; } FG
Types => All; Results => All;

LSU

Missouri



LSU	M/A	%
Field Goals	21/49	43
2 Points	7/21	33
3 Points	14/28	50
Free Throws	20/22	91

Missouri	M/A	%
Field Goals	29/63	46
2 Points	19/33	58
3 Points	10/30	33
Free Throws	13/13	100



Missouri at LSU

03/01/23 Maravich Assembly Center, Baton Rouge
2022-23 Men's Basketball

Game Time: 8:00 PM
Game Duration: 2:01
Attendance: 8,453

Officials: Terry Oglesby, Mike Nance, Brian Dorsey

Missouri

No	Name	Mins		Score		Points Diff		Points per Min		Assists		Rebounds		Steals		Turnovers	
		On	Off	On	Off	On	Off	On	Off	On	Off	On	Off	On	Off	On	Off
0	Mohamed Diarra	14:31	25:29	29 - 29	52 - 47	0	5	2.00	2.04	5	8	8	21	4	5	3	4
2	Tre Gomillion	04:19	35:41	9 - 11	72 - 65	-2	7	2.08	2.02	2	11	5	24	0	9	2	5
4	DeAndre Gholston	30:54	09:06	63 - 65	18 - 11	-2	7	2.04	1.98	9	4	20	9	6	3	7	0
5	D'Moi Hodge	33:13	06:47	67 - 58	14 - 18	9	-4	2.02	2.06	10	3	25	4	9	0	5	2
10	Nick Honor	28:59	11:01	57 - 59	24 - 17	-2	7	1.97	2.18	9	4	17	12	8	1	5	2
23	Aidan Shaw	04:59	35:01	9 - 15	72 - 61	-6	11	1.81	2.06	2	11	6	23	0	9	1	6
24	Kobe Brown	31:54	08:06	66 - 53	15 - 23	13	-8	2.07	1.85	11	2	23	6	8	1	4	3
35	Noah Carter	29:39	10:21	58 - 55	23 - 21	3	2	1.96	2.22	9	4	22	7	6	3	6	1
55	Sean East II	21:32	18:28	47 - 35	34 - 41	12	-7	2.18	1.84	8	5	19	10	4	5	2	5

LSU

No	Name	Mins		Score		Points Diff		Points per Min		Assists		Rebounds		Steals		Turnovers	
		On	Off	On	Off	On	Off	On	Off	On	Off	On	Off	On	Off	On	Off
0	Trae Hannibal	08:38	31:22	14 - 20	62 - 61	-6	1	1.62	1.98	3	13	6	27	0	4	4	12
1	Cam Hayes	32:09	07:51	59 - 63	17 - 18	-4	-1	1.84	2.17	11	5	29	4	3	1	15	1
3	Justice Hill	07:51	32:09	17 - 18	59 - 63	-1	-4	2.17	1.84	5	11	4	29	1	3	1	15
12	KJ Williams	38:48	01:12	72 - 79	4 - 2	-7	2	1.86	3.33	15	1	32	1	4	0	16	0
13	Jalen Reed	19:49	20:11	38 - 40	38 - 41	-2	-3	1.92	1.88	7	9	18	15	2	2	8	8
15	Tyrell Ward	27:50	12:10	53 - 55	23 - 26	-2	-3	1.90	1.89	11	5	22	11	2	2	12	4
20	Derek Fountain	21:23	18:37	42 - 43	34 - 38	-1	-4	1.96	1.83	10	6	16	17	2	2	8	8
30	Parker Edwards	06:07	33:53	14 - 10	62 - 71	4	-9	2.29	1.83	3	13	7	26	2	2	2	14
44	Adam Miller	37:25	02:35	71 - 77	5 - 4	-6	1	1.90	1.94	15	1	31	2	4	0	14	2



Missouri at LSU

03/01/23 Maravich Assembly Center, Baton Rouge
2022-23 Men's Basketball

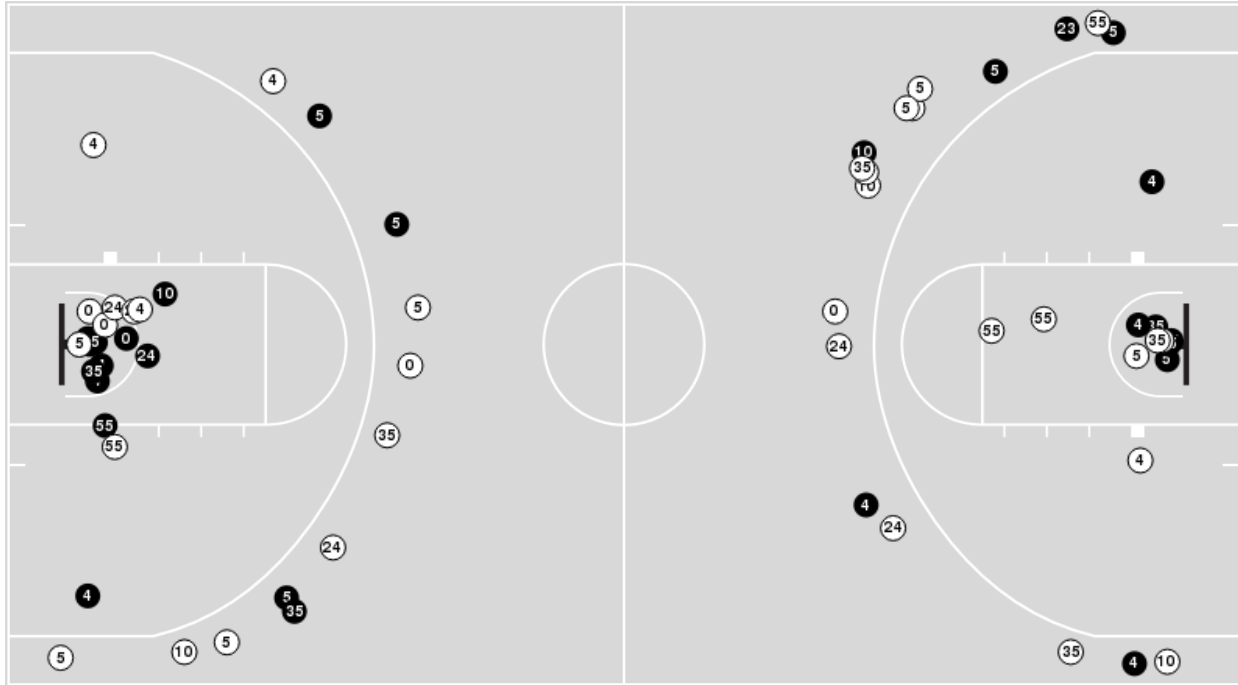
Game Time: 8:00 PM
Game Duration: 2:01
Attendance: 8,453

Officials: Terry Oglesby, Mike Nance, Brian Dorsey

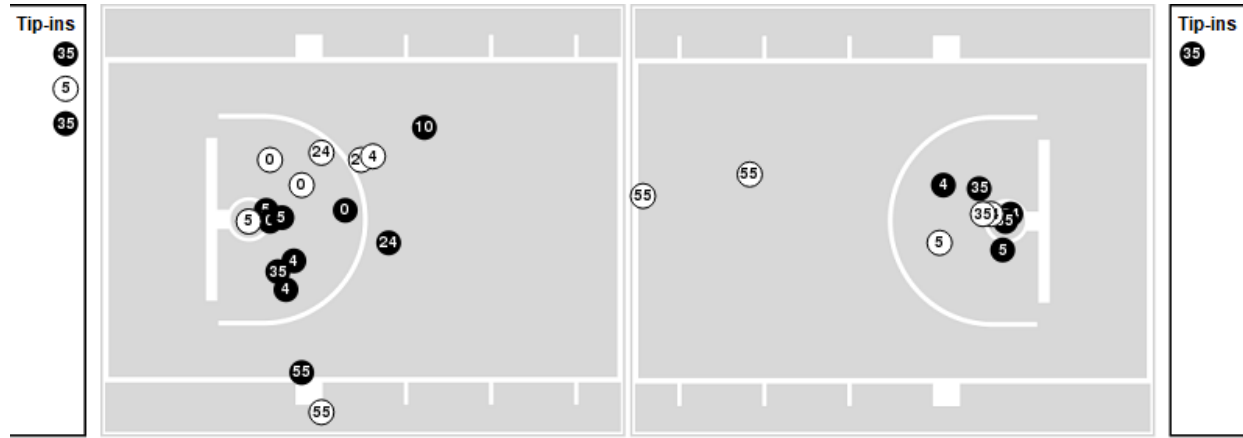
Players => 0, 1, 2, 4, 5, 10, 11, 12, 13, 23, 24, 31, 35, 45, 55 FG Types=>All Results=>All

Missouri

All Field Goals



Blow Up Chart



● Made ○ Missed N - Player Number

Missouri	M/A	%
Field Goals	29/63	46
2 Points	19/33	58
3 Points	10/30	33
Free Throws	13/13	100

Missouri	M/A	%
Points in the Paint	32 (16 / 27)	59
Fast Break Points	22 (11/11)	100
Second Chance Points	8 (5/9)	56
Effective FG%	54	



Missouri at LSU

03/01/23 Maravich Assembly Center, Baton Rouge
2022-23 Men's Basketball

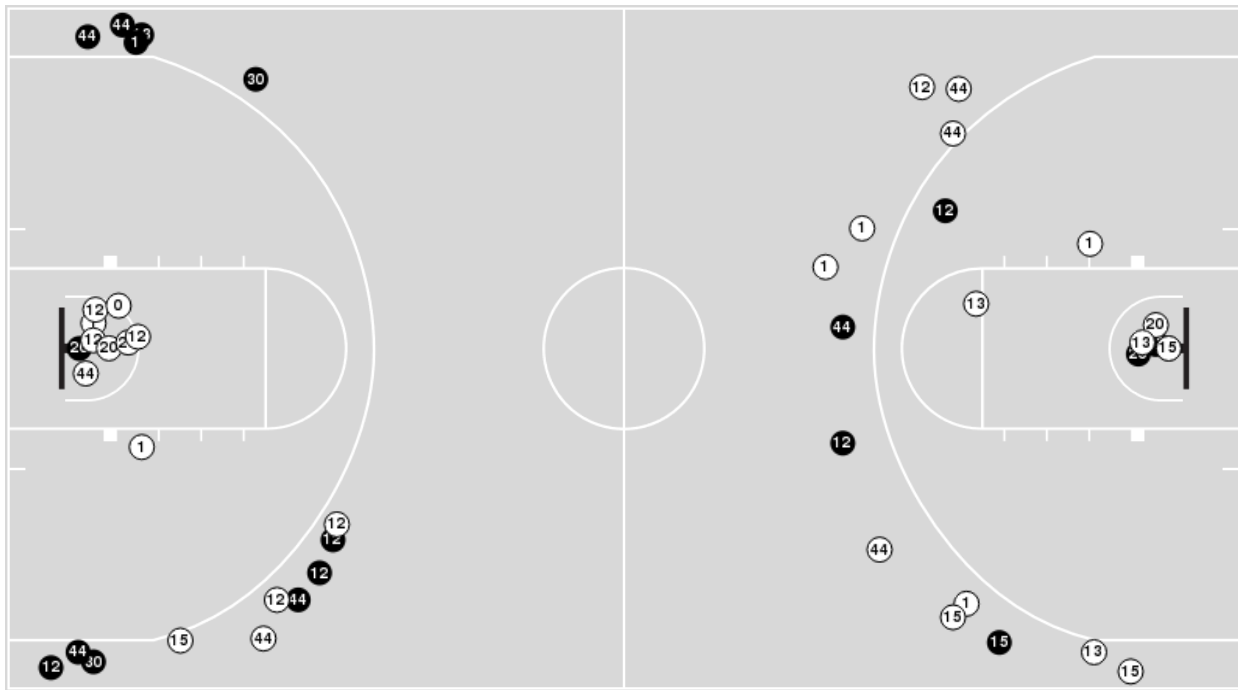
Game Time: 8:00 PM
Game Duration: 2:01
Attendance: 8,453

Officials: Terry Oglesby, Mike Nance, Brian Dorsey

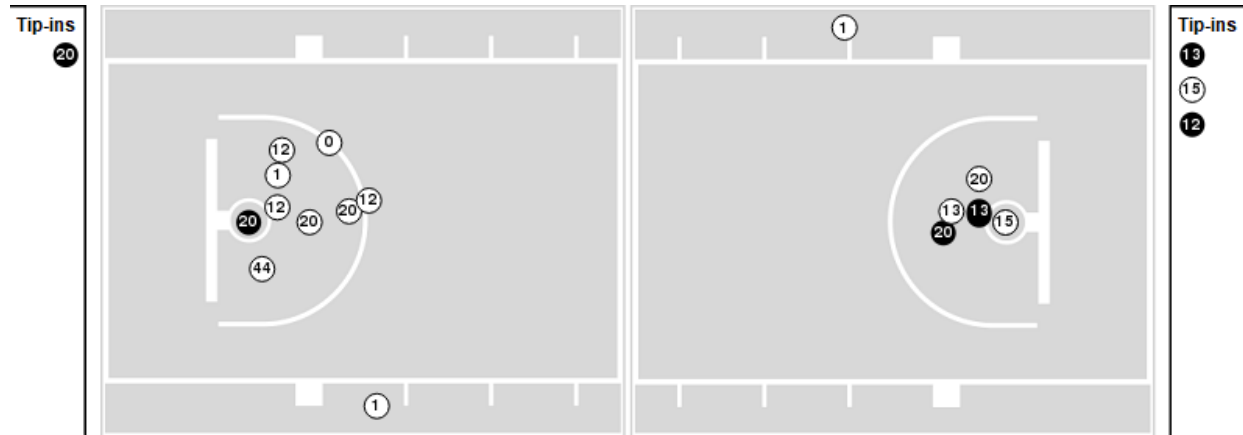
Players => 0, 1, 2, 3, 4, 5, 10, 11, 12, 13, 15, 20, 21, 25, 30, 34, 44 FG Types=>AllResults=>All

LSU

All Field Goals



Blow Up Chart



● Made ○ Missed N - Player Number

LSU	M/A	%
Field Goals	21/49	43
2 Points	7/21	33
3 Points	14/28	50
Free Throws	20/22	91

LSU	M/A	%
Points in the Paint	12 (6 / 17)	35
Fast Break Points	7 (5/5)	100
Second Chance Points	15 (9/12)	75
Effective FG%	57	



Missouri at LSU

03/01/23 Maravich Assembly Center, Baton Rouge
2022-23 Men's Basketball

Game Time: 8:00 PM
Game Duration: 2:01
Attendance: 8,453

Officials: Terry Oglesby, Mike Nance, Brian Dorsey

Missouri

Lineup	Quarter On	Time On	Quarter Off	Time Off	Time on Court	Score	Score Diff	Reb	Stl	Tov	Ass	PPP
0- Diarra M/ 4- Gholston D/ 5- Hodge D/ 10- Honor N/ 24- Brown K/	1	20:00	1	15:30	04:30	5-13	-8	2	0	1	2	0.8333
4- Gholston D/ 5- Hodge D/ 10- Honor N/ 24- Brown K/ 35- Carter N/	1	15:30	1	14:46	00:44	0-0	0	0	1	1	0	0.0000
2- Gomillion T/ 4- Gholston D/ 5- Hodge D/ 24- Brown K/ 35- Carter N/	1	14:46	1	14:12	00:34	0-0	0	1	0	0	0	0.0000
2- Gomillion T/ 4- Gholston D/ 24- Brown K/ 35- Carter N/ 55- East II S/	1	14:12	1	12:21	01:51	6-2	4	1	0	1	1	2.0000
2- Gomillion T/ 4- Gholston D/ 23- Shaw A/ 35- Carter N/ 55- East II S/	1	12:21	1	10:27	01:54	3-9	-6	3	0	1	1	0.7500
5- Hodge D/ 23- Shaw A/ 24- Brown K/ 35- Carter N/ 55- East II S/	1	10:27	1	09:16	01:11	2-0	2	2	0	0	1	2.0000
5- Hodge D/ 10- Honor N/ 24- Brown K/ 35- Carter N/ 55- East II S/	1	09:16	1	05:34	03:42	4-5	-1	3	1	0	1	0.5714
4- Gholston D/ 5- Hodge D/ 10- Honor N/ 24- Brown K/ 35- Carter N/	1	05:34	1	04:29	01:05	2-7	-5	0	0	1	0	1.0000
4- Gholston D/ 5- Hodge D/ 10- Honor N/ 23- Shaw A/ 35- Carter N/	1	04:29	1	03:17	01:12	1-4	-3	1	0	0	0	0.6944
0- Diarra M/ 4- Gholston D/ 5- Hodge D/ 10- Honor N/ 35- Carter N/	1	03:17	1	00:41	02:35	8-5	3	2	1	2	1	1.3605
0- Diarra M/ 4- Gholston D/ 5- Hodge D/ 10- Honor N/ 23- Shaw A/	1	00:41	1	00:21	00:20	1-1	0	0	0	0	0	2.2727
4- Gholston D/ 5- Hodge D/ 10- Honor N/ 23- Shaw A/ 35- Carter N/	1	00:21	2	20:00	00:22	2-1	1	0	0	0	0	2.0000
0- Diarra M/ 4- Gholston D/ 5- Hodge D/ 10- Honor N/ 24- Brown K/	2	20:00	2	14:37	05:23	15-7	8	4	3	0	2	1.4535
0- Diarra M/ 4- Gholston D/ 5- Hodge D/ 10- Honor N/ 35- Carter N/	2	14:37	2	13:38	00:59	0-3	-3	0	0	0	0	0.0000
5- Hodge D/ 10- Honor N/ 24- Brown K/ 35- Carter N/ 55- East II S/	2	13:38	2	09:25	04:13	12-6	6	4	2	0	2	1.7143
4- Gholston D/ 10- Honor N/ 24- Brown K/ 35- Carter N/ 55- East II S/	2	09:25	2	06:23	03:02	5-7	-2	0	0	0	1	1.2500
0- Diarra M/ 4- Gholston D/ 5- Hodge D/ 10- Honor N/ 35- Carter N/	2	06:23	2	05:39	00:44	0-0	0	0	0	0	0	0.0000
4- Gholston D/ 5- Hodge D/ 24- Brown K/ 35- Carter N/ 55- East II S/	2	05:39	2	00:08	05:31	13-6	7	5	1	0	1	1.6753
4- Gholston D/ 5- Hodge D/ 10- Honor N/ 24- Brown K/ 55- East II S/	2	00:08	2	00:00	00:08	2-0	2	1	0	0	0	2.2727



Missouri at LSU

LSU

Lineup	Quarter On	Time On	Quarter Off	Time Off	Time on Court	Score	Score Diff	Reb	Stl	Tov	Ass	PPP
1- Hayes C/ 12- Williams K/ 20- Fountain D/ 30- Edwards P/ 44- Miller A/	1	20:00	1	15:30	04:30	13-5	8	6	1	0	3	1.8895
1- Hayes C/ 12- Williams K/ 15- Ward T/ 20- Fountain D/ 44- Miller A/	1	15:30	1	13:19	02:11	1-3	-2	1	0	2	0	0.2907
3- Hill J/ 12- Williams K/ 13- Reed J/ 15- Ward T/ 44- Miller A/	1	13:19	1	09:16	04:03	10-8	2	2	1	0	3	1.5528
0- Hannibal T/ 3- Hill J/ 12- Williams K/ 15- Ward T/ 20- Fountain D/	1	09:16	1	08:40	00:36	2-0	2	1	0	0	0	2.2727
0- Hannibal T/ 1- Hayes C/ 12- Williams K/ 15- Ward T/ 20- Fountain D/	1	08:40	1	06:41	01:59	3-4	-1	1	0	2	1	0.7500
0- Hannibal T/ 1- Hayes C/ 12- Williams K/ 20- Fountain D/ 44- Miller A/	1	06:41	1	05:34	01:07	0-0	0	2	0	0	0	0.0000
1- Hayes C/ 12- Williams K/ 15- Ward T/ 20- Fountain D/ 44- Miller A/	1	05:34	1	04:29	01:05	7-2	5	0	1	0	2	2.8689
1- Hayes C/ 13- Reed J/ 15- Ward T/ 20- Fountain D/ 44- Miller A/	1	04:29	1	03:17	01:12	4-2	2	1	0	0	1	2.7778
1- Hayes C/ 12- Williams K/ 13- Reed J/ 15- Ward T/ 44- Miller A/	1	03:17	1	01:59	01:18	4-3	1	0	0	0	1	1.6393
1- Hayes C/ 12- Williams K/ 13- Reed J/ 30- Edwards P/ 44- Miller A/	1	01:59	1	00:21	01:37	1-5	-4	1	1	2	0	0.2907
0- Hannibal T/ 1- Hayes C/ 12- Williams K/ 13- Reed J/ 44- Miller A/	1	00:21	2	20:00	00:22	2-2	0	0	0	0	0	2.2727
1- Hayes C/ 12- Williams K/ 15- Ward T/ 20- Fountain D/ 44- Miller A/	2	20:00	2	15:59	04:01	5-11	-6	2	0	2	1	0.7267
0- Hannibal T/ 1- Hayes C/ 12- Williams K/ 20- Fountain D/ 44- Miller A/	2	15:59	2	14:37	01:22	2-4	-2	1	0	1	0	1.0000
0- Hannibal T/ 3- Hill J/ 12- Williams K/ 20- Fountain D/ 44- Miller A/	2	14:37	2	11:25	03:12	5-10	-5	1	0	1	2	1.0246
1- Hayes C/ 12- Williams K/ 13- Reed J/ 15- Ward T/ 44- Miller A/	2	11:25	2	00:08	11:17	17-20	-3	14	0	6	2	1.0216
1- Hayes C/ 12- Williams K/ 15- Ward T/ 20- Fountain D/ 44- Miller A/	2	00:08	2	00:00	00:08	0-2	-2	0	0	0	0	0.0000



Missouri at LSU

03/01/23 Maravich Assembly Center, Baton Rouge
2022-23 Men's Basketball

Game Time: 8:00 PM
Game Duration: 2:01
Attendance: 8,453

Officials: Terry Oglesby, Mike Nance, Brian Dorsey

Missouri

Lineup	Time	Score	Score Diff	Pts/Min	Reb	Stl	Tov	Ass	PPP
0- Diarra M/ 4- Gholston D/ 5- Hodge D/ 10- Honor N/ 24- Brown K/	09:53	20-20	0	2.0236	6	3	1	4	1.2255
5- Hodge D/ 10- Honor N/ 24- Brown K/ 35- Carter N/ 55- East II S/	07:55	16-11	5	2.0211	7	3	0	3	1.1429
4- Gholston D/ 5- Hodge D/ 24- Brown K/ 35- Carter N/ 55- East II S/	05:31	13-6	7	2.3565	5	1	0	1	1.6753
0- Diarra M/ 4- Gholston D/ 5- Hodge D/ 10- Honor N/ 35- Carter N/	04:18	8-8	0	1.8605	2	1	2	1	1.0152
4- Gholston D/ 10- Honor N/ 24- Brown K/ 35- Carter N/ 55- East II S/	03:02	5-7	-2	1.6484	0	0	0	1	1.2500
2- Gomillion T/ 4- Gholston D/ 23- Shaw A/ 35- Carter N/ 55- East II S/	01:54	3-9	-6	1.5789	3	0	1	1	0.7500
2- Gomillion T/ 4- Gholston D/ 24- Brown K/ 35- Carter N/ 55- East II S/	01:51	6-2	4	3.2432	1	0	1	1	2.0000
4- Gholston D/ 5- Hodge D/ 10- Honor N/ 24- Brown K/ 35- Carter N/	01:49	2-7	-5	1.1009	0	1	2	0	0.5000
4- Gholston D/ 5- Hodge D/ 10- Honor N/ 23- Shaw A/ 35- Carter N/	01:34	3-5	-2	1.9149	1	0	0	0	1.2295
5- Hodge D/ 23- Shaw A/ 24- Brown K/ 35- Carter N/ 55- East II S/	01:11	2-0	2	1.6901	2	0	0	1	2.0000
2- Gomillion T/ 4- Gholston D/ 5- Hodge D/ 24- Brown K/ 35- Carter N/	00:34	0-0	0	0.0000	1	0	0	0	0.0000
0- Diarra M/ 4- Gholston D/ 5- Hodge D/ 10- Honor N/ 23- Shaw A/	00:20	1-1	0	3.0000	0	0	0	0	2.2727
4- Gholston D/ 5- Hodge D/ 10- Honor N/ 24- Brown K/ 55- East II S/	00:08	2-0	2	15.0000	1	0	0	0	2.2727



Official Basketball Line Up Analysis - Final
Missouri at LSU
 03/01/23 Maravich Assembly Center, Baton Rouge
 2022-23 Men's Basketball

Game Time: 8:00 PM
Game Duration: 2:01
Attendance: 8,453

Officials: Terry Oglesby, Mike Nance, Brian Dorsey

LSU

Lineup	Time	Score	Score Diff	Pts/Min	Reb	Stl	Tov	Ass	PPP
1- Hayes C/ 12- Williams K/ 13- Reed J/ 15- Ward T/ 44- Miller A/	12:35	21-23	-2	1.6689	14	0	6	3	1.1006
1- Hayes C/ 12- Williams K/ 15- Ward T/ 20- Fountain D/ 44- Miller A/	07:25	13-18	-5	1.7528	3	1	4	3	0.9448
1- Hayes C/ 12- Williams K/ 20- Fountain D/ 30- Edwards P/ 44- Miller A/	04:30	13-5	8	2.8889	6	1	0	3	1.8895
3- Hill J/ 12- Williams K/ 13- Reed J/ 15- Ward T/ 44- Miller A/	04:03	10-8	2	2.4691	2	1	0	3	1.5528
0- Hannibal T/ 3- Hill J/ 12- Williams K/ 20- Fountain D/ 44- Miller A/	03:12	5-10	-5	1.5625	1	0	1	2	1.0246
0- Hannibal T/ 1- Hayes C/ 12- Williams K/ 20- Fountain D/ 44- Miller A/	02:29	2-4	-2	0.8054	3	0	1	0	0.6667
0- Hannibal T/ 1- Hayes C/ 12- Williams K/ 15- Ward T/ 20- Fountain D/	01:59	3-4	-1	1.5126	1	0	2	1	0.7500
1- Hayes C/ 12- Williams K/ 13- Reed J/ 30- Edwards P/ 44- Miller A/	01:37	1-5	-4	0.6186	1	1	2	0	0.2907
1- Hayes C/ 13- Reed J/ 15- Ward T/ 20- Fountain D/ 44- Miller A/	01:12	4-2	2	3.3333	1	0	0	1	2.7778
0- Hannibal T/ 3- Hill J/ 12- Williams K/ 15- Ward T/ 20- Fountain D/	00:36	2-0	2	3.3333	1	0	0	0	2.2727
0- Hannibal T/ 1- Hayes C/ 12- Williams K/ 13- Reed J/ 44- Miller A/	00:22	2-2	0	5.4545	0	0	0	0	2.2727