



Vanderbilt at LSU

02/22/23 Maravich Assembly Center, Baton Rouge  
2022-23 Men's Basketball

Game Time: 6:00 PM  
Game Duration: 2:05  
Attendance: 8,827

Officials: Joe Lindsay, Vladimir Voyard-Tadal, Patrick Evans

Vanderbilt - 77

Record: 15-13 (8-7)

| NO.           | Name                  | F/C | Min   | FG    |       |       | Rebounds |    |     | Fouls |    | TP | AS | TO | ST | Blocks |    | +/- |
|---------------|-----------------------|-----|-------|-------|-------|-------|----------|----|-----|-------|----|----|----|----|----|--------|----|-----|
|               |                       |     |       | M-A   | M-A   | M-A   | OR       | DR | TOT | PF    | FD |    |    |    |    | BS     | BA |     |
| 10            | Myles Stute           | F   | 14:18 | 0-4   | 0-4   | 0-0   | 0        | 1  | 1   | 3     | 1  | 0  | 1  | 0  | 0  | 0      | 1  | -5  |
| 21            | Liam Robbins          | C   | 33:35 | 6-14  | 2-5   | 9-15  | 4        | 7  | 11  | 4     | 12 | 23 | 0  | 4  | 0  | 9      | 0  | -4  |
| 0             | Tyrin Lawrence        | G   | 31:45 | 8-12  | 2-3   | 1-1   | 0        | 2  | 2   | 2     | 1  | 19 | 2  | 2  | 1  | 0      | 0  | -5  |
| 5             | Ezra Manjon           | G   | 27:15 | 3-4   | 0-0   | 1-3   | 0        | 3  | 3   | 4     | 3  | 7  | 7  | 1  | 1  | 0      | 0  | 6   |
| 12            | Trey Thomas           | G   | 39:05 | 4-10  | 3-7   | 0-0   | 1        | 1  | 2   | 2     | 1  | 11 | 1  | 0  | 0  | 0      | 0  | -4  |
| 4             | Jordan Wright         |     | 19:09 | 1-6   | 1-2   | 3-4   | 3        | 5  | 8   | 3     | 4  | 6  | 2  | 0  | 0  | 0      | 1  | -2  |
| 1             | Colin Smith           |     | 16:04 | 4-7   | 3-5   | 0-0   | 0        | 3  | 3   | 1     | 0  | 11 | 0  | 0  | 0  | 0      | 0  | -9  |
| 42            | Quentin Millora-Brown |     | 08:44 | 0-1   | 0-0   | 0-0   | 1        | 1  | 2   | 1     | 1  | 0  | 0  | 0  | 0  | 1      | 1  | -4  |
| 3             | Paul Lewis            |     | 06:34 | 0-1   | 0-1   | 0-0   | 0        | 1  | 1   | 0     | 0  | 0  | 1  | 0  | 0  | 0      | 0  | -9  |
| 20            | Emmanuel Ansong       |     | 03:31 | 0-0   | 0-0   | 0-0   | 0        | 0  | 0   | 0     | 0  | 0  | 0  | 0  | 0  | 1      | 0  | 1   |
| Team          |                       |     |       |       |       |       | 2        | 0  | 2   |       |    | 0  |    | 1  |    |        |    |     |
| <b>Totals</b> |                       |     |       | 26-59 | 11-27 | 14-23 | 11       | 24 | 35  | 20    | 23 | 77 | 14 | 8  | 2  | 11     | 3  | -7  |

| Shooting By Period |       |       |
|--------------------|-------|-------|
| 1st FG%            | 10-32 | 31.3% |
| 3PT%               | 6-17  | 35.3% |
| FT%                | 6-8   | 75%   |
| 2nd FG%            | 16-27 | 59.3% |
| 3PT%               | 5-10  | 50.0% |
| FT%                | 8-15  | 53.3% |
| GM FG%             | 26-59 | 44.1% |
| 3PT%               | 11-27 | 40.7% |
| FT%                | 14-23 | 60.9% |

Dead Ball Rebounds: 4, 0

Technical Fouls::NONE

LSU - 84

Record: 13-15 (2-13)

| NO.           | Name               | F/C | Min   | FG    |      |       | Rebounds |    |     | Fouls |    | TP | AS | TO | ST | Blocks |    | +/- |
|---------------|--------------------|-----|-------|-------|------|-------|----------|----|-----|-------|----|----|----|----|----|--------|----|-----|
|               |                    |     |       | M-A   | M-A  | M-A   | OR       | DR | TOT | PF    | FD |    |    |    |    | BS     | BA |     |
| 12            | KJ Williams        | F   | 35:55 | 13-25 | 5-10 | 4-6   | 4        | 6  | 10  | 0     | 5  | 35 | 0  | 1  | 1  | 0      | 6  | 7   |
| 15            | Tyrell Ward        | F   | 18:07 | 3-3   | 2-2  | 0-0   | 0        | 2  | 2   | 3     | 0  | 8  | 1  | 0  | 1  | 0      | 0  | -1  |
| 20            | Derek Fountain     | F   | 20:08 | 1-5   | 0-0  | 0-0   | 3        | 3  | 6   | 4     | 1  | 2  | 2  | 0  | 0  | 1      | 2  | 1   |
| 1             | Cam Hayes          | G   | 18:58 | 1-6   | 0-0  | 2-2   | 1        | 4  | 5   | 2     | 3  | 4  | 3  | 1  | 1  | 0      | 2  | -1  |
| 44            | Adam Miller        | G   | 32:58 | 4-10  | 1-4  | 9-10  | 1        | 4  | 5   | 3     | 6  | 18 | 3  | 3  | 2  | 0      | 1  | -1  |
| 3             | Justice Hill       |     | 27:02 | 2-7   | 1-5  | 1-2   | 2        | 1  | 3   | 0     | 1  | 6  | 4  | 1  | 0  | 0      | 0  | 12  |
| 13            | Jalen Reed         |     | 15:03 | 3-4   | 0-0  | 2-3   | 0        | 2  | 2   | 5     | 2  | 8  | 0  | 1  | 0  | 2      | 0  | 2   |
| 34            | Shawn Phillips Jr. |     | 10:03 | 0-0   | 0-0  | 0-0   | 0        | 2  | 2   | 4     | 0  | 0  | 1  | 0  | 0  | 0      | 0  | 1   |
| 0             | Trae Hannibal      |     | 21:46 | 0-0   | 0-0  | 3-4   | 2        | 3  | 5   | 2     | 2  | 3  | 1  | 0  | 1  | 0      | 0  | 15  |
| Team          |                    |     |       |       |      |       | 0        | 0  | 0   |       |    | 0  |    | 0  |    |        |    |     |
| <b>Totals</b> |                    |     |       | 27-60 | 9-21 | 21-27 | 13       | 27 | 40  | 23    | 20 | 84 | 15 | 7  | 6  | 3      | 11 | 7   |

| Shooting By Period |       |       |
|--------------------|-------|-------|
| 1st FG%            | 13-34 | 38.2% |
| 3PT%               | 6-13  | 46.2% |
| FT%                | 7-10  | 70%   |
| 2nd FG%            | 14-26 | 53.8% |
| 3PT%               | 3-8   | 37.5% |
| FT%                | 14-17 | 82.4% |
| GM FG%             | 27-60 | 45.0% |
| 3PT%               | 9-21  | 42.9% |
| FT%                | 21-27 | 77.8% |

Dead Ball Rebounds: 2, 0

Technical Fouls::NONE

|                  | VAN           | LSU           |
|------------------|---------------|---------------|
| Biggest lead     | 7 (1st 16:31) | 11 (2nd 4:17) |
| Best Scoring Run | 6(1st 16:31)  | 13(1st 6:48)  |
| Lead Changes     | 3             |               |
| Times Tied       | 2             |               |
| Time with Lead   | 09:25         | 28:53         |

| Points from   | VAN | LSU |
|---------------|-----|-----|
| Turnovers     | 14  | 12  |
| Paint         | 28  | 28  |
| Second Chance | 12  | 14  |
| Fast Breaks   | 6   | 9   |
| Bench         | 17  | 17  |

|     | Period by Period Scoring |     |     |
|-----|--------------------------|-----|-----|
|     | 1st                      | 2nd | TOT |
| VAN | 32                       | 45  | 77  |
| LSU | 39                       | 45  | 84  |



**Officials:** Joe Lindsay, Vladimir Voyard-Tadal, Patrick Evans

**Period 1**

**Quarter Starters:**

|            |              |               |            |               |              |
|------------|--------------|---------------|------------|---------------|--------------|
| <b>LSU</b> | 1 Hayes C    | 12 Williams K | 15 Ward T  | 20 Fountain D | 44 Miller A  |
| <b>VAN</b> | 0 Lawrence T | 5 Manjon E    | 10 Stute M | 12 Thomas T   | 21 Robbins L |

| Game Time | LSU  | Score      | Diff      | VAN   |
|-----------|--|------------|-----------|---|
| 20:00     | 20 FOUNTAIN D jumpball lost  |            |           | 21 ROBBINS L jumpball won                             |
| 19:33     |  | <b>0-3</b> | <b>-3</b> | 0 LAWRENCE T 3pt FG , jump shot made (3)              |
| 19:33     |  |            |           | 12 THOMAS T assist (1)                                |
| 19:18     | 12 WILLIAMS K 3pt FG , jump shot missed                                |            |           |   |
| 19:15     | 20 FOUNTAIN D offensive rebound (1)                                    |            |           |   |
| 19:06     | 1 HAYES C 2pt FG second chance outside the paint, jump shot missed     |            |           |   |
| 19:02     |  |            |           | 21 ROBBINS L defensive rebound (1)                    |
| 18:51     |  |            |           | 10 STUTE M 3pt FG , jump shot missed                  |
| 18:48     | 20 FOUNTAIN D defensive rebound (2)                                    |            |           |   |
| 18:40     | 1 HAYES C foul drawn (1)   |            |           | 5 MANJON E foul personal (1 - 1)                      |
| 18:29     | 20 FOUNTAIN D 2pt FG in the paint, layup blocked                       |            |           |   |
| 18:29     |  |            |           | 21 ROBBINS L block (1)                                |
| 18:26     |  |            |           | 5 MANJON E defensive rebound (1)                      |
| 18:22     |  |            |           | 10 STUTE M 3pt FG , jump shot missed                  |
| 18:19     |  |            |           | offensive dead ball rebound (1)                       |
| 18:19     | 15 WARD T foul personal (1 - 1)  |            |           | 10 STUTE M foul drawn (1)                             |
| 18:15     |  |            |           | 21 ROBBINS L 3pt FG second chance, jump shot missed   |
| 18:11     | 20 FOUNTAIN D defensive rebound (3)                                    |            |           |   |
| 17:55     | 44 MILLER A 2pt FG outside the paint, jump shot missed                 |            |           |   |
| 17:51     | 20 FOUNTAIN D offensive rebound (4)                                    |            |           |   |
| 17:50     | 20 FOUNTAIN D 2pt FG second chance in the paint, layup blocked         |            |           |   |
| 17:50     |  |            |           | 21 ROBBINS L block (2)                                |
| 17:47     |  |            |           | 5 MANJON E defensive rebound (2)                      |
| 17:40     | 1 HAYES C steal (1)  |            |           | 21 ROBBINS L turnover lost ball (1)                   |
| 17:35     | 15 WARD T 2pt FG fast break from turnover in the paint, layup made (2) | <b>2-3</b> | <b>-1</b> |   |
| 17:35     | 44 MILLER A assist (1)   |            |           |   |
| 17:13     |  | <b>2-6</b> | <b>-4</b> | 0 LAWRENCE T 3pt FG , jump shot made (6)              |
| 17:13     |  |            |           | 5 MANJON E assist (1)                                 |
| 16:58     | 1 HAYES C foul drawn (2)   |            |           | 5 MANJON E foul personal (2 - 2)                      |
| 16:58     |  |            |           | 5 MANJON E substitution out                           |
| 16:58     |  |            |           | 4 WRIGHT J substitution in                            |
| 16:45     | 44 MILLER A turnover travel (1)  |            |           |   |
| 16:31     |  | <b>2-9</b> | <b>-7</b> | 21 ROBBINS L 3pt FG from turnover, jump shot made (3) |
| 16:31     |  |            |           | 10 STUTE M assist (1)                                 |
| 16:18     | 15 WARD T 3pt FG , jump shot made (5)                                  | <b>5-9</b> | <b>-4</b> |   |
| 16:18     | 20 FOUNTAIN D assist (1)   |            |           |   |
| 15:56     |  |            |           | 21 ROBBINS L 2pt FG in the paint, layup missed        |
| 15:56     |  |            |           | 4 WRIGHT J offensive rebound (1)                      |
| 15:55     | Timeout media  |            |           |   |
| 15:44     |  |            |           | turnover shot clock (2)                               |
| 15:30     | 12 WILLIAMS K 2pt FG from turnover in the paint, layup blocked         |            |           |   |



Official Basketball Play by Play - First Half  
**Vanderbilt at LSU**  
 02/22/23 Maravich Assembly Center, Baton Rouge  
 2022-23 Men's Basketball

**Game Time:** 6:00 PM  
**Game Duration:** 2:05  
**Attendance:** 8,827

**Officials:** Joe Lindsay, Vladimir Voyard-Tadal, Patrick Evans

| Game Time | LSU   | Score        | Diff      | VAN  |
|-----------|---|--------------|-----------|--|
| 15:30     |   |              |           | 21 ROBBINS L block (3)   |
| 15:27     |   |              |           | 4 WRIGHT J defensive rebound (2)                               |
| 15:22     | 15 WARD T foul shooting (2 - 2)                             |              |           | 21 ROBBINS L foul drawn (1)                                    |
| 15:22     | 15 WARD T substitution out                                  |              |           |  |
| 15:22     | 3 HILL J substitution in                                    |              |           |  |
| 15:22     |   | <b>5-10</b>  | <b>-5</b> | 21 ROBBINS L free throw fast break 1 - 2 made (4)              |
| 15:22     |   | <b>5-11</b>  | <b>-6</b> | 21 ROBBINS L free throw fast break 2 - 2 made (5)              |
| 15:11     | 12 WILLIAMS K 3pt FG , jump shot made (3)                   | <b>8-11</b>  | <b>-3</b> |  |
| 15:11     | 1 HAYES C assist (1)  |              |           |  |
| 14:59     |   |              |           | 0 LAWRENCE T 3pt FG , jump shot missed                         |
| 14:53     | 1 HAYES C defensive rebound (1)                             |              |           |  |
| 14:50     | 3 HILL J 3pt FG , jump shot made (3)                        | <b>11-11</b> | <b>0</b>  |  |
| 14:50     | 1 HAYES C assist (2)  |              |           |  |
| 14:27     | 44 MILLER A steal (1)                                       |              |           | 0 LAWRENCE T turnover bad pass (1)                             |
| 14:23     | 1 HAYES C 2pt FG from turnover in the paint, layup missed   |              |           |  |
| 14:22     | 44 MILLER A offensive rebound (1)                           |              |           |  |
| 14:22     | 44 MILLER A foul offensive (1 - 3)                          |              |           | 4 WRIGHT J foul drawn (1)                                      |
| 14:22     | 44 MILLER A turnover offensive (2)                          |              |           |  |
| 14:22     | 1 HAYES C substitution out                                  |              |           |  |
| 14:22     | 13 REED J substitution in                                   |              |           |  |
| 14:22     |   |              |           | 10 STUTE M substitution out                                    |
| 14:22     |   |              |           | 1 SMITH C substitution in                                      |
| 13:59     |   | <b>11-13</b> | <b>-2</b> | 0 LAWRENCE T 2pt FG from turnover in the paint, layup made (8) |
| 13:59     | 20 FOUNTAIN D foul shooting (1 - 4)                         |              |           | 0 LAWRENCE T foul drawn (1)                                    |
| 13:59     |   |              |           | 21 ROBBINS L substitution out                                  |
| 13:59     |   |              |           | 42 MILLORA-BROWN Q substitution in                             |
| 13:59     |   | <b>11-14</b> | <b>-3</b> | 0 LAWRENCE T free throw 1 - 1 made (9)                         |
| 13:44     | 3 HILL J turnover bad pass (1)                              |              |           |  |
| 13:22     |   |              |           | 4 WRIGHT J 2pt FG from turnover in the paint, jump shot missed |
| 13:19     | 13 REED J defensive rebound (1)                             |              |           |  |
| 13:13     | 20 FOUNTAIN D foul drawn (1)                                |              |           | 1 SMITH C foul personal (1 - 3)                                |
| 13:13     | 20 FOUNTAIN D substitution out                              |              |           |  |
| 13:13     | 1 HAYES C substitution in                                   |              |           |  |
| 13:00     | 44 MILLER A foul drawn (1)                                  |              |           | 4 WRIGHT J foul shooting (1 - 4)                               |
| 13:00     | 44 MILLER A free throw 1 - 2 made (1)                       | <b>12-14</b> | <b>-2</b> |  |
| 13:00     | 12 WILLIAMS K substitution out                              |              |           |  |
| 13:00     | 34 PHILLIPS JR. S substitution in                           |              |           |  |
| 13:00     | 44 MILLER A free throw 2 - 2 made (2)                       | <b>13-14</b> | <b>-1</b> |  |
| 12:44     |   | <b>13-16</b> | <b>-3</b> | 0 LAWRENCE T 2pt FG in the paint, layup made (11)              |
| 12:21     | 3 HILL J 3pt FG , jump shot missed                          |              |           |  |
| 12:17     | 3 HILL J offensive rebound (1)                              |              |           |  |
| 12:11     | 13 REED J 2pt FG second chance in the paint, layup made (2) | <b>15-16</b> | <b>-1</b> |  |
| 12:11     | 44 MILLER A assist (2)                                      |              |           |  |
| 11:59     |   |              |           | 4 WRIGHT J 2pt FG outside the paint, jump shot missed          |
| 11:58     | 44 MILLER A defensive rebound (2)                           |              |           |  |
| 11:58     | 13 REED J foul offensive (1 - 5)                            |              |           | 42 MILLORA-BROWN Q foul drawn (1)                              |
| 11:58     | 13 REED J turnover offensive (1)                            |              |           |  |
| 11:58     |   |              |           | Timeout media  |



Official Basketball Play by Play - First Half  
**Vanderbilt at LSU**  
 02/22/23 Maravich Assembly Center, Baton Rouge  
 2022-23 Men's Basketball

**Game Time:** 6:00 PM  
**Game Duration:** 2:05  
**Attendance:** 8,827

**Officials:** Joe Lindsay, Vladimir Voyard-Tadal, Patrick Evans

| Game Time | LSU  | Score        | Diff      | VAN   |
|-----------|--|--------------|-----------|---|
| 11:58     | 44 MILLER A substitution out                           |              |           |   |
| 11:58     | 0 HANNIBAL T substitution in                           |              |           |   |
| 11:58     |  |              |           | 0 LAWRENCE T substitution out                                     |
| 11:58     |  |              |           | 3 LEWIS P substitution in   |
| 11:48     |  | <b>15-18</b> | <b>-3</b> | 12 THOMAS T 2pt FG from turnover in the paint, jump shot made (2) |
| 11:34     | 13 REED J 2pt FG in the paint, layup missed            |              |           |   |
| 11:28     |  |              |           | 1 SMITH C defensive rebound (1)                                   |
| 11:08     |  |              |           | 1 SMITH C 3pt FG , jump shot missed                               |
| 11:05     | 34 PHILLIPS JR. S defensive rebound (1)                |              |           |   |
| 10:57     | 1 HAYES C 2pt FG in the paint, layup blocked           |              |           |   |
| 10:57     |  |              |           | 42 MILLORA-BROWN Q block (1)                                      |
| 10:54     |  |              |           | 42 MILLORA-BROWN Q defensive rebound (1)                          |
| 10:44     |  |              |           | 4 WRIGHT J 2pt FG in the paint, jump shot missed                  |
| 10:37     | 1 HAYES C defensive rebound (2)                        |              |           |   |
| 10:34     | jump ball situation                                    |              |           |   |
| 10:34     | 34 PHILLIPS JR. S substitution out                     |              |           |   |
| 10:34     | 12 WILLIAMS K substitution in                          |              |           |   |
| 10:34     |  |              |           | 42 MILLORA-BROWN Q substitution out                               |
| 10:34     |  |              |           | 21 ROBBINS L substitution in                                      |
| 10:34     |  |              |           | 4 WRIGHT J substitution out                                       |
| 10:34     |  |              |           | 10 STUTE M substitution in  |
| 10:22     | 1 HAYES C 2pt FG outside the paint, jump shot made (2) | <b>17-18</b> | <b>-1</b> |   |
| 10:22     | 3 HILL J assist (1)                                    |              |           |   |
| 09:58     |  |              |           | 21 ROBBINS L 3pt FG , jump shot missed                            |
| 09:54     | 1 HAYES C defensive rebound (3)                        |              |           |   |
| 09:47     | 13 REED J 2pt FG in the paint, layup made (4)          | <b>19-18</b> | <b>1</b>  |   |
| 09:32     |  |              |           | 12 THOMAS T 3pt FG , jump shot missed                             |
| 09:27     | 0 HANNIBAL T defensive rebound (1)                     |              |           |   |
| 09:23     | 3 HILL J 3pt FG , jump shot missed                     |              |           |   |
| 09:20     |  |              |           | 21 ROBBINS L defensive rebound (2)                                |
| 09:05     |  |              |           | 21 ROBBINS L 2pt FG in the paint, jump shot missed                |
| 09:02     | 12 WILLIAMS K defensive rebound (1)                    |              |           |   |
| 08:45     | 12 WILLIAMS K 2pt FG in the paint, layup made (5)      | <b>21-18</b> | <b>3</b>  |   |
| 08:32     |  |              |           | 10 STUTE M 3pt FG , jump shot missed                              |
| 08:29     | 3 HILL J defensive rebound (2)                         |              |           |   |
| 08:11     | 12 WILLIAMS K 3pt FG , jump shot missed                |              |           |   |
| 08:08     |  |              |           | 12 THOMAS T defensive rebound (1)                                 |
| 07:56     | 13 REED J foul personal (2 - 6)                        |              |           | 21 ROBBINS L foul drawn (2)                                       |
| 07:56     | Timeout media  |              |           |   |
| 07:56     | 1 HAYES C substitution out                             |              |           |   |
| 07:56     | 3 HILL J substitution out                              |              |           |   |
| 07:56     | 13 REED J substitution out                             |              |           |   |
| 07:56     | 15 WARD T substitution in                              |              |           |   |
| 07:56     | 20 FOUNTAIN D substitution in                          |              |           |   |
| 07:56     | 44 MILLER A substitution in                            |              |           |   |
| 07:56     |  |              |           | 12 THOMAS T substitution out                                      |
| 07:56     |  |              |           | 0 LAWRENCE T substitution in                                      |
| 07:49     |  |              |           | 0 LAWRENCE T 2pt FG outside the paint, jump shot missed           |



Official Basketball Play by Play - First Half  
**Vanderbilt at LSU**  
 02/22/23 Maravich Assembly Center, Baton Rouge  
 2022-23 Men's Basketball

**Game Time:** 6:00 PM  
**Game Duration:** 2:05  
**Attendance:** 8,827

**Officials:** Joe Lindsay, Vladimir Voyard-Tadal, Patrick Evans

| Game Time | LSU   | Score        | Diff      | VAN  |
|-----------|---|--------------|-----------|--|
| 07:46     | 15 WARD T defensive rebound (1)                                 |              |           |  |
| 07:41     | 12 WILLIAMS K 3pt FG , jump shot missed                         |              |           |  |
| 07:36     | 0 HANNIBAL T offensive rebound (2)                              |              |           |  |
| 07:32     | 44 MILLER A 3pt FG second chance, jump shot made (5)            | <b>24-18</b> | <b>6</b>  |  |
| 07:32     | 15 WARD T assist (1)  |              |           |  |
| 07:07     |   |              |           | 3 LEWIS P 3pt FG , jump shot missed                  |
| 07:02     | 0 HANNIBAL T defensive rebound (3)                              |              |           |  |
| 07:01     | 0 HANNIBAL T foul drawn (1)                                     |              |           | 0 LAWRENCE T foul flagrant 1 (1 - 5)                 |
| 07:01     |   |              |           | 3 LEWIS P substitution out                           |
| 07:01     |   |              |           | 12 THOMAS T substitution in                          |
| 07:01     | 0 HANNIBAL T free throw fast break 1 - 2 missed                 |              |           |  |
| 07:01     | offensive dead ball rebound (1)                                 |              |           |  |
| 07:01     | 0 HANNIBAL T free throw fast break 2 - 2 made (1)               | <b>25-18</b> | <b>7</b>  |  |
| 06:52     | 20 FOUNTAIN D 2pt FG in the paint, dunk, missed                 |              |           |  |
| 06:49     | 0 HANNIBAL T offensive rebound (4)                              |              |           |  |
| 06:48     | 12 WILLIAMS K 2pt FG second chance in the paint, layup made (7) | <b>27-18</b> | <b>9</b>  |  |
| 06:48     | 0 HANNIBAL T assist (1)   |              |           |  |
| 06:48     | 12 WILLIAMS K foul drawn (1)                                    |              |           | 10 STUTE M foul shooting (1 - 6)                     |
| 06:48     | 12 WILLIAMS K free throw 1 - 1 made (8)                         | <b>28-18</b> | <b>10</b> |  |
| 06:35     |   |              |           | 0 LAWRENCE T 2pt FG in the paint, layup missed       |
| 06:31     | 12 WILLIAMS K defensive rebound (2)                             |              |           |  |
| 06:26     | 44 MILLER A 3pt FG , jump shot missed                           |              |           |  |
| 06:22     |   |              |           | 1 SMITH C defensive rebound (2)                      |
| 06:11     |   |              |           | 21 ROBBINS L 3pt FG , jump shot missed               |
| 06:07     |   |              |           | 12 THOMAS T offensive rebound (2)                    |
| 06:06     |   | <b>28-21</b> | <b>7</b>  | 12 THOMAS T 3pt FG second chance, jump shot made (5) |
| 05:50     | 12 WILLIAMS K foul drawn (2)                                    |              |           | 10 STUTE M foul personal (2 - 7)                     |
| 05:50     | 0 HANNIBAL T substitution out                                   |              |           |  |
| 05:50     | 1 HAYES C substitution in                                       |              |           |  |
| 05:50     |   |              |           | 0 LAWRENCE T substitution out                        |
| 05:50     |   |              |           | 1 SMITH C substitution out                           |
| 05:50     |   |              |           | 10 STUTE M substitution out                          |
| 05:50     |   |              |           | 4 WRIGHT J substitution in                           |
| 05:50     |   |              |           | 5 MANJON E substitution in                           |
| 05:50     |   |              |           | 20 ANSONG E substitution in                          |
| 05:50     | 12 WILLIAMS K 1&1 free throw 1 made (9)                         | <b>29-21</b> | <b>8</b>  |  |
| 05:50     | 12 WILLIAMS K 1&1 free throw 2 missed                           |              |           |  |
| 05:48     |   |              |           | 21 ROBBINS L defensive rebound (3)                   |
| 05:33     | 20 FOUNTAIN D foul personal (2 - 7)                             |              |           | 4 WRIGHT J foul drawn (2)                            |
| 05:33     | 20 FOUNTAIN D substitution out                                  |              |           |  |
| 05:33     | 13 REED J substitution in                                       |              |           |  |
| 05:33     |   | <b>29-22</b> | <b>7</b>  | 4 WRIGHT J 1&1 free throw 1 made (1)                 |
| 05:33     |   | <b>29-23</b> | <b>6</b>  | 4 WRIGHT J 1&1 free throw 2 made (2)                 |
| 05:19     | 44 MILLER A 2pt FG in the paint, layup blocked                  |              |           |  |
| 05:19     |   |              |           | 21 ROBBINS L block (4)                               |
| 05:15     | 12 WILLIAMS K offensive rebound (3)                             |              |           |  |
| 05:15     | 12 WILLIAMS K 2pt FG second chance in the paint, layup blocked  |              |           |  |
| 05:15     |   |              |           | 21 ROBBINS L block (5)                               |



Official Basketball Play by Play - First Half  
**Vanderbilt at LSU**  
 02/22/23 Maravich Assembly Center, Baton Rouge  
 2022-23 Men's Basketball

**Game Time:** 6:00 PM  
**Game Duration:** 2:05  
**Attendance:** 8,827

**Officials:** Joe Lindsay, Vladimir Voyard-Tadal, Patrick Evans

| Game Time | LSU  | Score        | Diff     | VAN  |
|-----------|--|--------------|----------|--|
| 05:13     |  |              |          | 4 WRIGHT J defensive rebound (3)                               |
| 05:11     |  |              |          | 4 WRIGHT J 2pt FG in the paint, layup blocked                  |
| 05:11     | 13 REED J block (1)  |              |          |  |
| 05:11     |  |              |          | offensive rebound (14)   |
| 04:55     |  | <b>29-26</b> | <b>3</b> | 4 WRIGHT J 3pt FG second chance, jump shot made (5)            |
| 04:55     |  |              |          | 5 MANJON E assist (2)  |
| 04:33     | 15 WARD T 3pt FG , jump shot made (8)                          | <b>32-26</b> | <b>6</b> |  |
| 04:33     | 1 HAYES C assist (3)   |              |          |  |
| 04:12     | 44 MILLER A steal (2)  |              |          | 21 ROBBINS L turnover lost ball (2)                            |
| 04:09     | 44 MILLER A foul drawn (2)                                     |              |          | 4 WRIGHT J foul shooting (2 - 8)                               |
| 04:09     | 44 MILLER A free throw fast break 1 - 2 made (6)               | <b>33-26</b> | <b>7</b> |  |
| 04:09     | 12 WILLIAMS K substitution out                                 |              |          |  |
| 04:09     | 34 PHILLIPS JR. S substitution in                              |              |          |  |
| 04:09     | 44 MILLER A free throw fast break 2 - 2 made (7)               | <b>34-26</b> | <b>8</b> |  |
| 03:44     | 34 PHILLIPS JR. S foul personal (1 - 8)                        |              |          | 21 ROBBINS L foul drawn (3)                                    |
| 03:44     | Timeout media  |              |          |  |
| 03:44     | 15 WARD T substitution out                                     |              |          |  |
| 03:44     | 3 HILL J substitution in                                       |              |          |  |
| 03:44     |  |              |          | 21 ROBBINS L 1&1 free throw 1 missed                           |
| 03:42     |  |              |          | 4 WRIGHT J offensive rebound (4)                               |
| 03:40     |  |              |          | 12 THOMAS T 3pt FG second chance, jump shot missed             |
| 03:37     | 13 REED J defensive rebound (2)                                |              |          |  |
| 03:19     | 1 HAYES C foul offensive (1 - 9)                               |              |          | 12 THOMAS T foul drawn (1)                                     |
| 03:19     | 1 HAYES C turnover offensive (1)                               |              |          |  |
| 03:19     | 13 REED J substitution out                                     |              |          |  |
| 03:19     | 12 WILLIAMS K substitution in                                  |              |          |  |
| 02:57     |  | <b>34-28</b> | <b>6</b> | 21 ROBBINS L 2pt FG from turnover in the paint, dunk, made (7) |
| 02:57     |  |              |          | 4 WRIGHT J assist (1)  |
| 02:29     | 1 HAYES C 2pt FG in the paint, layup blocked                   |              |          |  |
| 02:29     |  |              |          | 20 ANSONG E block (1)  |
| 02:24     | 1 HAYES C offensive rebound (4)                                |              |          |  |
| 02:23     | 3 HILL J 3pt FG second chance, jump shot missed                |              |          |  |
| 02:21     | 12 WILLIAMS K offensive rebound (4)                            |              |          |  |
| 02:20     | 12 WILLIAMS K 2pt FG second chance in the paint, layup blocked |              |          |  |
| 02:20     |  |              |          | 21 ROBBINS L block (6)   |
| 02:19     |  |              |          | 21 ROBBINS L defensive rebound (4)                             |
| 02:19     | jump ball situation  |              |          |  |
| 02:19     | 34 PHILLIPS JR. S substitution out                             |              |          |  |
| 02:19     | 13 REED J substitution in                                      |              |          |  |
| 02:19     |  |              |          | 20 ANSONG E substitution out                                   |
| 02:19     |  |              |          | 42 MILLORA-BROWN Q substitution in                             |
| 02:03     |  |              |          | 42 MILLORA-BROWN Q 2pt FG in the paint, layup blocked          |
| 02:03     | 13 REED J block (2)  |              |          |  |
| 02:00     | 12 WILLIAMS K defensive rebound (5)                            |              |          |  |
| 01:55     | 13 REED J foul drawn (1)                                       |              |          | 42 MILLORA-BROWN Q foul personal (1 - 9)                       |
| 01:55     | 1 HAYES C substitution out                                     |              |          |  |
| 01:55     | 0 HANNIBAL T substitution in                                   |              |          |  |
| 01:55     | 13 REED J 1&1 free throw 1 missed                              |              |          |  |



Official Basketball Play by Play - First Half  
**Vanderbilt at LSU**  
 02/22/23 Maravich Assembly Center, Baton Rouge  
 2022-23 Men's Basketball

**Game Time:** 6:00 PM  
**Game Duration:** 2:05  
**Attendance:** 8,827

**Officials:** Joe Lindsay, Vladimir Voyard-Tadal, Patrick Evans

| Game Time            | LSU   | Score        | Diff     | VAN   |
|----------------------|---|--------------|----------|---|
| 01:53                |   |              |          | 4 WRIGHT J defensive rebound (5)                        |
| 01:42                |   |              |          | 5 MANJON E 2pt FG in the paint, jump shot missed        |
| 01:39                |   |              |          | 42 MILLORA-BROWN Q offensive rebound (2)                |
| 01:37                | 0 HANNIBAL T foul personal (1 - 10)             |              |          | 21 ROBBINS L foul drawn (4)                             |
| 01:37                |   | <b>34-29</b> | <b>5</b> | 21 ROBBINS L free throw 1 - 2 made (8)                  |
| 01:37                |   |              |          | 4 WRIGHT J substitution out                             |
| 01:37                |   |              |          | 5 MANJON E substitution out                             |
| 01:37                |   |              |          | 0 LAWRENCE T substitution in                            |
| 01:37                |   |              |          | 3 LEWIS P substitution in                               |
| 01:37                |   |              |          | 21 ROBBINS L free throw 2 - 2 missed                    |
| 01:35                | 44 MILLER A defensive rebound (3)               |              |          |   |
| 01:23                | 13 REED J 2pt FG in the paint, layup made (6)   | <b>36-29</b> | <b>7</b> |   |
| 01:07                |   | <b>36-32</b> | <b>4</b> | 21 ROBBINS L 3pt FG , jump shot made (11)               |
| 01:07                |   |              |          | 3 LEWIS P assist (1)                                    |
| 00:40                | 12 WILLIAMS K 3pt FG , jump shot made (12)      | <b>39-32</b> | <b>7</b> |   |
| 00:40                | 3 HILL J assist (2)                             |              |          |   |
| 00:38                | Timeout 30 Sec                                  |              |          |   |
| 00:13                |   |              |          | 21 ROBBINS L 2pt FG outside the paint, jump shot missed |
| 00:09                | 0 HANNIBAL T defensive rebound (5)              |              |          |   |
| 00:04                | 12 WILLIAMS K 2pt FG in the paint, layup missed |              |          |   |
| 00:02                |   |              |          | 3 LEWIS P defensive rebound (1)                         |
| <b>END OF PERIOD</b> |   |              |          |   |
| <b>LSU 39-32 VAN</b> |   |              |          |   |



Vanderbilt at LSU

02/22/23 Maravich Assembly Center, Baton Rouge  
2022-23 Men's Basketball

Game Time: 6:00 PM  
Game Duration: 2:05  
Attendance: 8,827

Officials: Joe Lindsay, Vladimir Voyard-Tadal, Patrick Evans

Vanderbilt - 32

| NO.           | Name                  | F/C | Min   | FG    |      |     | 3P |    |     | FT |    |    | Rebounds |   |   | Fouls |   | TP | AS | TO | ST | Blocks |     | +/- |
|---------------|-----------------------|-----|-------|-------|------|-----|----|----|-----|----|----|----|----------|---|---|-------|---|----|----|----|----|--------|-----|-----|
|               |                       |     |       | M-A   | M-A  | M-A | OR | DR | TOT | PF | FD | BS | BA       |   |   |       |   |    |    |    |    |        |     |     |
| 10            | Myles Stute           | F   | 10:22 | 0-3   | 0-3  | 0-0 | 0  | 0  | 0   | 2  | 1  | 0  | 1        | 0 | 0 | 0     | 0 | 0  | 0  | 0  | 0  | 0      | -10 |     |
| 21            | Liam Robbins          | C   | 16:35 | 3-9   | 2-5  | 3-5 | 0  | 4  | 4   | 0  | 4  | 11 | 0        | 2 | 0 | 6     | 0 | 0  | 0  | 0  | 0  | -8     |     |     |
| 0             | Tyrin Lawrence        | G   | 11:45 | 4-7   | 2-3  | 1-1 | 0  | 0  | 0   | 1  | 1  | 11 | 0        | 1 | 0 | 0     | 0 | 0  | 0  | 0  | 0  | -5     |     |     |
| 5             | Ezra Manjon           | G   | 07:15 | 0-1   | 0-0  | 0-0 | 0  | 2  | 2   | 2  | 0  | 0  | 2        | 0 | 0 | 0     | 0 | 0  | 0  | 0  | 0  | 6      |     |     |
| 12            | Trey Thomas           | G   | 19:05 | 2-4   | 1-3  | 0-0 | 1  | 1  | 2   | 0  | 1  | 5  | 1        | 0 | 0 | 0     | 0 | 0  | 0  | 0  | 0  | -4     |     |     |
| 4             | Jordan Wright         |     | 10:37 | 1-5   | 1-1  | 2-2 | 2  | 3  | 5   | 2  | 2  | 5  | 1        | 0 | 0 | 0     | 0 | 0  | 0  | 1  | 1  | 1      |     |     |
| 1             | Colin Smith           |     | 08:32 | 0-1   | 0-1  | 0-0 | 0  | 2  | 2   | 1  | 0  | 0  | 0        | 0 | 0 | 0     | 0 | 0  | 0  | 0  | 0  | -7     |     |     |
| 42            | Quentin Millora-Brown |     | 05:44 | 0-1   | 0-0  | 0-0 | 1  | 1  | 2   | 1  | 1  | 0  | 0        | 0 | 0 | 0     | 0 | 0  | 0  | 1  | 1  | 0      |     |     |
| 3             | Paul Lewis            |     | 06:34 | 0-1   | 0-1  | 0-0 | 0  | 1  | 1   | 0  | 0  | 0  | 1        | 0 | 0 | 0     | 0 | 0  | 0  | 0  | 0  | -9     |     |     |
| 20            | Emmanuel Ansong       |     | 03:31 | 0-0   | 0-0  | 0-0 | 0  | 0  | 0   | 0  | 0  | 0  | 0        | 0 | 0 | 0     | 0 | 0  | 0  | 1  | 0  | 1      |     |     |
| Team          |                       |     |       |       |      |     | 1  | 0  | 1   |    |    | 0  |          |   | 1 |       |   |    |    |    |    |        |     |     |
| <b>Totals</b> |                       |     |       | 10-32 | 6-17 | 6-8 | 5  | 14 | 19  | 9  | 10 | 32 | 6        | 4 | 0 | 8     | 2 |    |    |    |    |        | -7  |     |

| Shooting By Period |       |       |
|--------------------|-------|-------|
| 1st FG%            | 10-32 | 31.3% |
| 3PT%               | 6-17  | 35.3% |
| FT%                | 6-8   | 75%   |
| GM FG%             | 10-32 | 31.3% |
| 3PT%               | 6-17  | 35.3% |
| FT%                | 6-8   | 75.0% |

Dead Ball Rebounds: 1, 0

Technical Fouls::NONE

LSU - 39

| NO.           | Name               | F/C | Min   | FG    |      |      | 3P |    |     | FT |    |    | Rebounds |   |   | Fouls |   | TP | AS | TO | ST | Blocks |  | +/- |
|---------------|--------------------|-----|-------|-------|------|------|----|----|-----|----|----|----|----------|---|---|-------|---|----|----|----|----|--------|--|-----|
|               |                    |     |       | M-A   | M-A  | M-A  | OR | DR | TOT | PF | FD | BS | BA       |   |   |       |   |    |    |    |    |        |  |     |
| 12            | KJ Williams        | F   | 16:44 | 4-11  | 2-5  | 2-3  | 2  | 3  | 5   | 0  | 2  | 12 | 0        | 0 | 0 | 0     | 3 | 7  |    |    |    |        |  |     |
| 15            | Tyrell Ward        | F   | 08:50 | 3-3   | 2-2  | 0-0  | 0  | 1  | 1   | 2  | 0  | 8  | 1        | 0 | 0 | 0     | 0 | 1  |    |    |    |        |  |     |
| 20            | Derek Fountain     | F   | 09:10 | 0-3   | 0-0  | 0-0  | 2  | 2  | 4   | 2  | 1  | 0  | 1        | 0 | 0 | 0     | 2 | 2  |    |    |    |        |  |     |
| 1             | Cam Hayes          | G   | 14:50 | 1-5   | 0-0  | 0-0  | 1  | 3  | 4   | 1  | 2  | 2  | 3        | 1 | 1 | 0     | 2 | 5  |    |    |    |        |  |     |
| 44            | Adam Miller        | G   | 15:58 | 1-4   | 1-2  | 4-4  | 1  | 2  | 3   | 1  | 2  | 7  | 2        | 2 | 2 | 0     | 1 | 3  |    |    |    |        |  |     |
| 3             | Justice Hill       |     | 11:10 | 1-4   | 1-4  | 0-0  | 1  | 1  | 2   | 0  | 0  | 3  | 2        | 1 | 0 | 0     | 0 | 6  |    |    |    |        |  |     |
| 13            | Jalen Reed         |     | 10:59 | 3-4   | 0-0  | 0-1  | 0  | 2  | 2   | 2  | 1  | 6  | 0        | 1 | 0 | 2     | 0 | 4  |    |    |    |        |  |     |
| 34            | Shawn Phillips Jr. |     | 04:16 | 0-0   | 0-0  | 0-0  | 0  | 1  | 1   | 1  | 0  | 0  | 0        | 0 | 0 | 0     | 0 | -2 |    |    |    |        |  |     |
| 0             | Trae Hannibal      |     | 08:03 | 0-0   | 0-0  | 1-2  | 2  | 3  | 5   | 1  | 1  | 1  | 1        | 0 | 0 | 0     | 0 | 9  |    |    |    |        |  |     |
| Team          |                    |     |       |       |      |      | 0  | 0  | 0   |    |    | 0  |          |   | 0 |       |   |    |    |    |    |        |  |     |
| <b>Totals</b> |                    |     |       | 13-34 | 6-13 | 7-10 | 9  | 18 | 27  | 10 | 9  | 39 | 10       | 5 | 3 | 2     | 8 | 7  |    |    |    |        |  |     |

| Shooting By Period |       |       |
|--------------------|-------|-------|
| 1st FG%            | 13-34 | 38.2% |
| 3PT%               | 6-13  | 46.2% |
| FT%                | 7-10  | 70%   |
| GM FG%             | 13-34 | 38.2% |
| 3PT%               | 6-13  | 46.2% |
| FT%                | 7-10  | 70.0% |

Dead Ball Rebounds: 1, 0

Technical Fouls::NONE

|                  | VAN           | LSU           |
|------------------|---------------|---------------|
| Biggest lead     | 7 (1st 16:31) | 10 (1st 6:48) |
| Best Scoring Run | 6(1st 16:31)  | 13(1st 6:48)  |
| Lead Changes     | 1             |               |
| Times Tied       | 1             |               |
| Time with Lead   | 08:55         | 09:47         |

|               | VAN | LSU |
|---------------|-----|-----|
| Points from   |     |     |
| Turnovers     | 10  | 4   |
| Paint         | 8   | 12  |
| Second Chance | 7   | 8   |
| Fast Breaks   | 2   | 5   |
| Bench         | 5   | 10  |

|     | Period by Period Scoring |     |     |
|-----|--------------------------|-----|-----|
|     | 1st                      | 2nd | TOT |
| VAN | 32                       | 45  | 77  |
| LSU | 39                       | 45  | 84  |





## Period 2

## Quarter Starters:

|     |              |               |            |               |              |
|-----|--------------|---------------|------------|---------------|--------------|
| LSU | 1 Hayes C    | 12 Williams K | 15 Ward T  | 20 Fountain D | 44 Miller A  |
| VAN | 0 Lawrence T | 5 Manjon E    | 10 Stute M | 12 Thomas T   | 21 Robbins L |

| Game Time | LSU  | Score | Diff | VAN  |
|-----------|--|-------|------|--|
| 20:00     | 0 HANNIBAL T substitution out                    |       |      |  |
| 20:00     | 3 HILL J substitution out                        |       |      |  |
| 20:00     | 13 REED J substitution out                       |       |      |  |
| 20:00     | 1 HAYES C substitution in                        |       |      |  |
| 20:00     | 15 WARD T substitution in                        |       |      |  |
| 20:00     | 20 FOUNTAIN D substitution in                    |       |      |  |
| 20:00     |  |       |      | 3 LEWIS P substitution out                         |
| 20:00     |  |       |      | 42 MILLORA-BROWN Q substitution out                |
| 20:00     |  |       |      | 5 MANJON E substitution in                         |
| 20:00     |  |       |      | 10 STUTE M substitution in                         |
| 19:46     | 12 WILLIAMS K 3pt FG , jump shot missed          |       |      |  |
| 19:42     |  |       |      | 21 ROBBINS L defensive rebound (5)                 |
| 19:16     |  |       |      | 10 STUTE M 3pt FG , jump shot blocked              |
| 19:16     | 20 FOUNTAIN D block (1)                          |       |      |  |
| 19:12     | 15 WARD T defensive rebound (2)                  |       |      |  |
| 19:00     | 12 WILLIAMS K 2pt FG in the paint, layup blocked |       |      |  |
| 19:00     |  |       |      | 21 ROBBINS L block (7)                             |
| 18:54     |  |       |      | 5 MANJON E defensive rebound (3)                   |
| 18:48     |  | 39-34 | 5    | 0 LAWRENCE T 2pt FG in the paint, layup made (13)  |
| 18:33     | 1 HAYES C 2pt FG in the paint, layup missed      |       |      |  |
| 18:31     |  |       |      | 10 STUTE M defensive rebound (1)                   |
| 18:13     |  | 39-36 | 3    | 5 MANJON E 2pt FG in the paint, layup made (2)     |
| 17:55     | 44 MILLER A 2pt FG in the paint, layup missed    |       |      |  |
| 17:53     |  |       |      | 21 ROBBINS L defensive rebound (6)                 |
| 17:41     |  | 39-38 | 1    | 5 MANJON E 2pt FG in the paint, jump shot made (4) |
| 17:41     | Timeout 30 Sec                                   |       |      |  |
| 17:26     | 1 HAYES C foul drawn (3)                         |       |      | 21 ROBBINS L foul shooting (1 - 1)                 |
| 17:26     | 1 HAYES C free throw 1 - 2 made (3)              | 40-38 | 2    |  |
| 17:26     | 1 HAYES C free throw 2 - 2 made (4)              | 41-38 | 3    |  |
| 17:09     | 20 FOUNTAIN D foul personal (3 - 1)              |       |      | 21 ROBBINS L foul drawn (5)                        |
| 17:07     | 20 FOUNTAIN D substitution out                   |       |      |  |
| 17:07     | 13 REED J substitution in                        |       |      |  |
| 17:01     |  | 41-40 | 1    | 0 LAWRENCE T 2pt FG in the paint, layup made (15)  |
| 17:01     |  |       |      | 5 MANJON E assist (3)                              |
| 16:39     | 12 WILLIAMS K 2pt FG in the paint, layup blocked |       |      |  |
| 16:39     |  |       |      | 21 ROBBINS L block (8)                             |
| 16:36     |  |       |      | 0 LAWRENCE T defensive rebound (1)                 |
| 16:19     |  |       |      | 0 LAWRENCE T 2pt FG in the paint, layup missed     |
| 16:17     | 1 HAYES C defensive rebound (5)                  |       |      |  |
| 16:04     | 13 REED J foul drawn (2)                         |       |      | 10 STUTE M foul shooting (3 - 2)                   |
| 16:04     | 13 REED J free throw 1 - 2 made (7)              | 42-40 | 2    |  |
| 16:04     | 12 WILLIAMS K substitution out                   |       |      |  |
| 16:04     | 34 PHILLIPS JR. S substitution in                |       |      |  |

**Vanderbilt at LSU**02/22/23 Maravich Assembly Center, Baton Rouge  
2022-23 Men's Basketball**Game Time:** 6:00 PM  
**Game Duration:** 2:05  
**Attendance:** 8,827**Officials:** Joe Lindsay, Vladimir Voyard-Tadal, Patrick Evans

| Game Time | LSU   | Score        | Diff      | VAN   |
|-----------|---|--------------|-----------|---|
| 16:04     |   |              |           | 10 STUTE M substitution out                       |
| 16:04     |   |              |           | 4 WRIGHT J substitution in                        |
| 16:04     | 13 REED J free throw 2 - 2 made (8)                       | <b>43-40</b> | <b>3</b>  |   |
| 15:57     | 15 WARD T foul personal (3 - 2)                           |              |           | 5 MANJON E foul drawn (1)                         |
| 15:57     | Timeout media   |              |           |   |
| 15:57     | 15 WARD T substitution out                                |              |           |   |
| 15:57     | 0 HANNIBAL T substitution in                              |              |           |   |
| 15:57     | 34 PHILLIPS JR. S foul personal (2 - 3)                   |              |           | 21 ROBBINS L foul drawn (6)                       |
| 15:52     |   | <b>43-42</b> | <b>1</b>  | 5 MANJON E 2pt FG in the paint, layup made (6)    |
| 15:52     | 1 HAYES C foul shooting (2 - 4)                           |              |           | 5 MANJON E foul drawn (2)                         |
| 15:52     | 1 HAYES C substitution out                                |              |           |   |
| 15:52     | 3 HILL J substitution in                                  |              |           |   |
| 15:52     |   |              |           | 5 MANJON E free throw 1 - 1 missed                |
| 15:52     |   |              |           | 4 WRIGHT J offensive rebound (6)                  |
| 15:52     | 13 REED J foul personal (3 - 5)                           |              |           | 4 WRIGHT J foul drawn (3)                         |
| 15:52     | 13 REED J foul personal (4 - 6)                           |              |           | 21 ROBBINS L foul drawn (7)                       |
| 15:48     | 0 HANNIBAL T steal (1)                                    |              |           | 21 ROBBINS L turnover lost ball (3)               |
| 15:15     | 0 HANNIBAL T foul drawn (2)                               |              |           | 12 THOMAS T foul shooting (1 - 3)                 |
| 15:15     | 0 HANNIBAL T free throw 1 - 2 made (2)                    | <b>44-42</b> | <b>2</b>  |   |
| 15:15     | 34 PHILLIPS JR. S substitution out                        |              |           |   |
| 15:15     | 12 WILLIAMS K substitution in                             |              |           |   |
| 15:15     | 0 HANNIBAL T free throw 2 - 2 made (3)                    | <b>45-42</b> | <b>3</b>  |   |
| 15:02     | 44 MILLER A foul personal (2 - 7)                         |              |           | 4 WRIGHT J foul drawn (4)                         |
| 15:02     |   |              |           | 4 WRIGHT J free throw 1 - 2 missed                |
| 15:02     |   |              |           | offensive dead ball rebound (2)                   |
| 15:02     |   | <b>45-43</b> | <b>2</b>  | 4 WRIGHT J free throw 2 - 2 made (6)              |
| 14:46     | 44 MILLER A foul drawn (3)                                |              |           | 0 LAWRENCE T foul personal (2 - 4)                |
| 14:39     | 3 HILL J 3pt FG , jump shot missed                        |              |           |   |
| 14:36     |   |              |           | 21 ROBBINS L defensive rebound (7)                |
| 14:31     | 20 FOUNTAIN D foul shooting (4 - 8)                       |              |           | 21 ROBBINS L foul drawn (8)                       |
| 14:31     |   |              |           | 21 ROBBINS L free throw 1 - 2 missed              |
| 14:31     |   |              |           | offensive dead ball rebound (3)                   |
| 14:31     |   | <b>45-44</b> | <b>1</b>  | 21 ROBBINS L free throw 2 - 2 made (12)           |
| 14:31     | 13 REED J substitution out                                |              |           |   |
| 14:31     | 34 PHILLIPS JR. S substitution in                         |              |           |   |
| 14:07     | 12 WILLIAMS K 2pt FG in the paint, layup made (14)        | <b>47-44</b> | <b>3</b>  |   |
| 14:07     | 34 PHILLIPS JR. S assist (1)                              |              |           |   |
| 13:31     |   | <b>47-46</b> | <b>1</b>  | 21 ROBBINS L 2pt FG in the paint, layup made (14) |
| 13:31     |   |              |           | 5 MANJON E assist (4)                             |
| 13:00     | 44 MILLER A foul drawn (4)                                |              |           | 21 ROBBINS L foul shooting (2 - 5)                |
| 13:00     | 44 MILLER A free throw 1 - 2 missed                       |              |           |   |
| 13:00     | offensive dead ball rebound (2)                           |              |           |   |
| 13:00     | 44 MILLER A free throw 2 - 2 made (8)                     | <b>48-46</b> | <b>2</b>  |   |
| 12:42     |   | <b>48-49</b> | <b>-1</b> | 12 THOMAS T 3pt FG , jump shot made (8)           |
| 12:42     |   |              |           | 5 MANJON E assist (5)                             |
| 12:12     | 44 MILLER A 2pt FG outside the paint, jump shot made (10) | <b>50-49</b> | <b>1</b>  |   |
| 11:57     | 34 PHILLIPS JR. S foul personal (3 - 9)                   |              |           | 21 ROBBINS L foul drawn (9)                       |
| 11:57     |   | <b>50-50</b> | <b>0</b>  | 21 ROBBINS L 1&1 free throw 1 made (15)           |
| 11:57     |   |              |           | 21 ROBBINS L 1&1 free throw 2 missed              |



**Vanderbilt at LSU**

| Game Time | LSU   | Score        | Diff     | VAN   |
|-----------|---|--------------|----------|---|
| 11:56     | 34 PHILLIPS JR. S defensive rebound (2)   |              |          |   |
| 11:41     | 12 WILLIAMS K foul drawn (3)  |              |          | 4 WRIGHT J foul personal (3 - 6)                      |
| 11:38     | 44 MILLER A 3pt FG , jump shot missed   |              |          |   |
| 11:33     | 12 WILLIAMS K offensive rebound (6)   |              |          |   |
| 11:33     | 12 WILLIAMS K 2pt FG second chance in the paint, layup made (16)                        | <b>52-50</b> | <b>2</b> |   |
| 11:14     | 12 WILLIAMS K steal (1)   |              |          | 21 ROBBINS L turnover bad pass (4)                    |
| 11:07     | 44 MILLER A 2pt FG fast break from turnover in the paint, layup made (12)               | <b>54-50</b> | <b>4</b> |   |
| 10:45     |   |              |          | 5 MANJON E turnover bad pass (1)                      |
| 10:25     | 12 WILLIAMS K 2pt FG from turnover in the paint, jump shot blocked                      |              |          |   |
| 10:25     |   |              |          | 21 ROBBINS L block (9)                                |
| 10:20     | 12 WILLIAMS K offensive rebound (7)   |              |          |   |
| 10:20     | 12 WILLIAMS K 2pt FG from turnover second chance outside the paint, jump shot made (18) | <b>56-50</b> | <b>6</b> |   |
| 10:10     |   | <b>56-53</b> | <b>3</b> | 12 THOMAS T 3pt FG , jump shot made (11)              |
| 10:10     |   |              |          | 4 WRIGHT J assist (2)                                 |
| 09:51     | 12 WILLIAMS K 2pt FG in the paint, layup made (20)                                      | <b>58-53</b> | <b>5</b> |   |
| 09:51     | 12 WILLIAMS K foul drawn (4)  |              |          | 21 ROBBINS L foul shooting (3 - 7)                    |
| 09:51     | 12 WILLIAMS K free throw 1 - 1 missed   |              |          |   |
| 09:48     |   |              |          | 4 WRIGHT J defensive rebound (7)                      |
| 09:33     | 34 PHILLIPS JR. S foul personal (4 - 10)  |              |          | 21 ROBBINS L foul drawn (10)                          |
| 09:33     |   | <b>58-54</b> | <b>4</b> | 21 ROBBINS L free throw 1 - 2 made (16)               |
| 09:33     | 34 PHILLIPS JR. S substitution out  |              |          |   |
| 09:33     | 20 FOUNTAIN D substitution in   |              |          |   |
| 09:33     |   |              |          | 21 ROBBINS L free throw 2 - 2 missed                  |
| 09:31     | 44 MILLER A defensive rebound (4)   |              |          |   |
| 09:17     | 12 WILLIAMS K 3pt FG , jump shot made (23)  | <b>61-54</b> | <b>7</b> |   |
| 09:17     | 44 MILLER A assist (3)  |              |          |   |
| 08:46     |   | <b>61-56</b> | <b>5</b> | 0 LAWRENCE T 2pt FG in the paint, jump shot made (17) |
| 08:27     | 3 HILL J 2pt FG outside the paint, jump shot missed                                     |              |          |   |
| 08:24     | 20 FOUNTAIN D offensive rebound (5)   |              |          |   |
| 08:24     | 20 FOUNTAIN D 2pt FG second chance in the paint, layup missed                           |              |          |   |
| 08:22     | 3 HILL J offensive rebound (3)  |              |          |   |
| 08:22     | 3 HILL J 2pt FG second chance in the paint, layup made (5)                              | <b>63-56</b> | <b>7</b> |   |
| 08:05     |   | <b>63-58</b> | <b>5</b> | 21 ROBBINS L 2pt FG in the paint, dunk, made (18)     |
| 08:05     |   |              |          | 0 LAWRENCE T assist (1)                               |
| 07:41     | 44 MILLER A 3pt FG , jump shot missed   |              |          |   |
| 07:38     |   |              |          | 4 WRIGHT J defensive rebound (8)                      |
| 07:33     |   |              |          | 4 WRIGHT J 3pt FG , jump shot missed                  |
| 07:32     | 12 WILLIAMS K defensive rebound (8)   |              |          |   |
| 07:32     | 12 WILLIAMS K foul drawn (5)  |              |          | 21 ROBBINS L foul personal (4 - 8)                    |
| 07:32     | Timeout media   |              |          |   |
| 07:32     | 44 MILLER A substitution out  |              |          |   |
| 07:32     | 15 WARD T substitution in   |              |          |   |
| 07:32     |   |              |          | 4 WRIGHT J substitution out                           |
| 07:32     |   |              |          | 21 ROBBINS L substitution out                         |
| 07:32     |   |              |          | 1 SMITH C substitution in                             |
| 07:32     |   |              |          | 42 MILLORA-BROWN Q substitution in                    |



**Vanderbilt at LSU**

| Game Time | LSU  | Score        | Diff      | VAN  |
|-----------|--|--------------|-----------|--|
| 07:32     | 12 WILLIAMS K 1&1 free throw 1 made (24)                       | <b>64-58</b> | <b>6</b>  |  |
| 07:32     | 12 WILLIAMS K 1&1 free throw 2 made (25)                       | <b>65-58</b> | <b>7</b>  |  |
| 07:14     |  |              |           | 1 SMITH C 2pt FG in the paint, jump shot missed                            |
| 07:11     | 20 FOUNTAIN D defensive rebound (6)                            |              |           |  |
| 06:43     | 12 WILLIAMS K 3pt FG , jump shot made (28)                     | <b>68-58</b> | <b>10</b> |  |
| 06:43     | 3 HILL J assist (3)  |              |           |  |
| 06:19     |  | <b>68-60</b> | <b>8</b>  | 0 LAWRENCE T 2pt FG outside the paint, jump shot made (19)                 |
| 05:53     | 12 WILLIAMS K 2pt FG outside the paint, jump shot made (30)    | <b>70-60</b> | <b>10</b> |  |
| 05:27     |  |              |           | 12 THOMAS T 2pt FG outside the paint, jump shot missed                     |
| 05:24     | 12 WILLIAMS K defensive rebound (9)                            |              |           |  |
| 05:23     | 12 WILLIAMS K turnover lost ball (1)                           |              |           | 0 LAWRENCE T steal (1)   |
| 05:18     |  | <b>70-63</b> | <b>7</b>  | 1 SMITH C 3pt FG fast break from turnover, jump shot made (3)              |
| 05:18     |  |              |           | 0 LAWRENCE T assist (2)  |
| 04:58     | 20 FOUNTAIN D 2pt FG in the paint, layup made (2)              | <b>72-63</b> | <b>9</b>  |  |
| 04:36     | 15 WARD T steal (1)  |              |           | 0 LAWRENCE T turnover bad pass (2)   |
| 04:32     | 0 HANNIBAL T substitution out                                  |              |           |  |
| 04:32     | 44 MILLER A substitution in                                    |              |           |  |
| 04:32     |  |              |           | 42 MILLORA-BROWN Q substitution out  |
| 04:32     |  |              |           | 21 ROBBINS L substitution in   |
| 04:17     | 44 MILLER A 2pt FG from turnover in the paint, layup made (14) | <b>74-63</b> | <b>11</b> |  |
| 04:05     |  |              |           | 12 THOMAS T 2pt FG in the paint, jump shot missed                          |
| 04:01     |  |              |           | 21 ROBBINS L offensive rebound (8)   |
| 04:01     | 44 MILLER A foul shooting (3 - 11)                             |              |           | 21 ROBBINS L foul drawn (11)   |
| 04:01     |  | <b>74-64</b> | <b>10</b> | 21 ROBBINS L free throw 1 - 2 made (19)                                    |
| 04:01     |  | <b>74-65</b> | <b>9</b>  | 21 ROBBINS L free throw 2 - 2 made (20)                                    |
| 03:38     | 12 WILLIAMS K 3pt FG , jump shot missed                        |              |           |  |
| 03:35     |  |              |           | 0 LAWRENCE T defensive rebound (2)   |
| 03:23     |  |              |           | 1 SMITH C 3pt FG , jump shot missed  |
| 03:21     |  |              |           | 21 ROBBINS L offensive rebound (9)   |
| 03:19     |  | <b>74-67</b> | <b>7</b>  | 21 ROBBINS L 2pt FG second chance in the paint, layup made (22)            |
| 02:41     | 12 WILLIAMS K 2pt FG in the paint, layup made (32)             | <b>76-67</b> | <b>9</b>  |  |
| 02:41     | 20 FOUNTAIN D assist (2)                                       |              |           |  |
| 02:29     |  | <b>76-69</b> | <b>7</b>  | 1 SMITH C 2pt FG in the paint, layup made (5)                              |
| 02:18     | jump ball situation  |              |           |  |
| 02:18     | 44 MILLER A turnover lost ball (3)                             |              |           | 5 MANJON E steal (1)   |
| 02:18     | Timeout media  |              |           |  |
| 02:18     | 15 WARD T substitution out                                     |              |           |  |
| 02:18     | 20 FOUNTAIN D substitution out                                 |              |           |  |
| 02:18     | 0 HANNIBAL T substitution in                                   |              |           |  |
| 02:18     | 13 REED J substitution in                                      |              |           |  |
| 02:09     |  |              |           | 12 THOMAS T 3pt FG from turnover, jump shot missed                         |
| 02:05     |  |              |           | 21 ROBBINS L offensive rebound (10)  |
| 02:05     |  |              |           | 21 ROBBINS L 2pt FG from turnover second chance in the paint, layup missed |
| 02:05     |  |              |           | offensive rebound (33)   |
| 01:58     | 0 HANNIBAL T foul personal (2 - 12)                            |              |           | 5 MANJON E foul drawn (3)  |
| 01:58     |  | <b>76-70</b> | <b>6</b>  | 5 MANJON E free throw 1 - 2 made (7)                                       |
| 01:58     |  |              |           | 5 MANJON E free throw 2 - 2 missed   |
| 01:57     | 44 MILLER A defensive rebound (5)                              |              |           |  |



**Vanderbilt at LSU**

**Officials:** Joe Lindsay, Vladimir Voyard-Tadal, Patrick Evans

| Game Time            | LSU  | Score        | Diff     | VAN  |
|----------------------|--|--------------|----------|--|
| 01:46                | 3 HILL J foul drawn (1)                    |              |          | 5 MANJON E foul personal (3 - 9)                             |
| 01:46                | 3 HILL J 1&1 free throw 1 made (6)         | <b>77-70</b> | <b>7</b> |  |
| 01:46                | 3 HILL J 1&1 free throw 2 missed           |              |          |  |
| 01:45                |  |              |          | 1 SMITH C defensive rebound (3)                              |
| 01:26                |  | <b>77-73</b> | <b>4</b> | 1 SMITH C 3pt FG , jump shot made (8)                        |
| 01:26                |  |              |          | 5 MANJON E assist (6)  |
| 00:56                | 12 WILLIAMS K 3pt FG , jump shot made (35) | <b>80-73</b> | <b>7</b> |  |
| 00:56                | 3 HILL J assist (4)                        |              |          |  |
| 00:50                | 13 REED J foul shooting (5 - 13)           |              |          | 21 ROBBINS L foul drawn (12)                                 |
| 00:50                | 13 REED J substitution out                 |              |          |  |
| 00:50                | 20 FOUNTAIN D substitution in              |              |          |  |
| 00:50                |  |              |          | 21 ROBBINS L free throw fast break 1 - 2 missed              |
| 00:50                |  |              |          | offensive dead ball rebound (4)                              |
| 00:50                |  | <b>80-74</b> | <b>6</b> | 21 ROBBINS L free throw fast break 2 - 2 made (23)           |
| 00:35                | 44 MILLER A foul drawn (5)                 |              |          | 12 THOMAS T foul personal (2 - 10)                           |
| 00:35                | 44 MILLER A free throw 1 - 2 made (15)     | <b>81-74</b> | <b>7</b> |  |
| 00:35                | 44 MILLER A free throw 2 - 2 made (16)     | <b>82-74</b> | <b>8</b> |  |
| 00:25                |  | <b>82-77</b> | <b>5</b> | 1 SMITH C 3pt FG , jump shot made (11)                       |
| 00:25                |  |              |          | 5 MANJON E assist (7)  |
| 00:24                | Timeout 30 Sec                             |              |          |  |
| 00:21                | 44 MILLER A foul drawn (6)                 |              |          | 5 MANJON E foul personal (4 - 11)                            |
| 00:21                | 44 MILLER A free throw 1 - 2 made (17)     | <b>83-77</b> | <b>6</b> |  |
| 00:21                | 44 MILLER A free throw 2 - 2 made (18)     | <b>84-77</b> | <b>7</b> |  |
| 00:18                |  |              |          | 12 THOMAS T 3pt FG , jump shot missed                        |
| 00:15                |  |              |          | 21 ROBBINS L offensive rebound (11)                          |
| 00:15                |  |              |          | 21 ROBBINS L 2pt FG second chance in the paint, layup missed |
| 00:13                | 12 WILLIAMS K defensive rebound (10)       |              |          |  |
| 00:13                | jump ball situation                        |              |          |  |
| <b>END OF GAME</b>   |  |              |          |  |
| <b>LSU 84-77 VAN</b> |  |              |          |  |



**Vanderbilt at LSU**

02/22/23 Maravich Assembly Center, Baton Rouge  
2022-23 Men's Basketball

Game Time: 6:00 PM  
Game Duration: 2:05  
Attendance: 8,827

Officials: Joe Lindsay, Vladimir Voyard-Tadal, Patrick Evans

**Vanderbilt - 45**

| NO.           | Name                  | F/C | Min   | FG    | 3P   | FT   | Rebounds |    |     | Fouls |    | TP | AS | TO | ST | Blocks |    | +/- |
|---------------|-----------------------|-----|-------|-------|------|------|----------|----|-----|-------|----|----|----|----|----|--------|----|-----|
|               |                       |     |       | M-A   | M-A  | M-A  | OR       | DR | TOT | PF    | FD |    |    |    |    | BS     | BA |     |
| 10            | Myles Stute           | F   | 03:56 | 0-1   | 0-1  | 0-0  | 0        | 1  | 1   | 1     | 0  | 0  | 0  | 0  | 0  | 0      | 1  | 5   |
| 21            | Liam Robbins          | C   | 17:00 | 3-5   | 0-0  | 6-10 | 4        | 3  | 7   | 4     | 8  | 12 | 0  | 2  | 0  | 3      | 0  | 4   |
| 0             | Tyrin Lawrence        | G   | 20:00 | 4-5   | 0-0  | 0-0  | 0        | 2  | 2   | 1     | 0  | 8  | 2  | 1  | 1  | 0      | 0  | 0   |
| 5             | Ezra Manjon           | G   | 20:00 | 3-3   | 0-0  | 1-3  | 0        | 1  | 1   | 2     | 3  | 7  | 5  | 1  | 1  | 0      | 0  | 0   |
| 12            | Trey Thomas           | G   | 20:00 | 2-6   | 2-4  | 0-0  | 0        | 0  | 0   | 2     | 0  | 6  | 0  | 0  | 0  | 0      | 0  | 0   |
| 3             | Paul Lewis            |     | 00:00 | 0-0   | 0-0  | 0-0  | 0        | 0  | 0   | 0     | 0  | 0  | 0  | 0  | 0  | 0      | 0  | 0   |
| 4             | Jordan Wright         |     | 08:32 | 0-1   | 0-1  | 1-2  | 1        | 2  | 3   | 1     | 2  | 1  | 1  | 0  | 0  | 0      | 0  | -3  |
| 1             | Colin Smith           |     | 07:32 | 4-6   | 3-4  | 0-0  | 0        | 1  | 1   | 0     | 0  | 11 | 0  | 0  | 0  | 0      | 0  | -2  |
| 42            | Quentin Millora-Brown |     | 03:00 | 0-0   | 0-0  | 0-0  | 0        | 0  | 0   | 0     | 0  | 0  | 0  | 0  | 0  | 0      | 0  | -4  |
| Team          |                       |     |       |       |      |      | 1        | 0  | 1   |       |    | 0  |    | 0  |    |        |    |     |
| <b>Totals</b> |                       |     |       | 16-27 | 5-10 | 8-15 | 6        | 10 | 16  | 11    | 13 | 45 | 8  | 4  | 2  | 3      | 1  | 0   |

| Shooting By Period  |       |       |
|---------------------|-------|-------|
| 2 <sup>nd</sup> FG% | 16-27 | 59.3% |
| 3PT%                | 5-10  | 50.0% |
| FT%                 | 8-15  | 53.3% |
| GM FG%              | 16-27 | 59.3% |
| 3PT%                | 5-10  | 50.0% |
| FT%                 | 8-15  | 53.3% |

Dead Ball Rebounds: 3, 0

Technical Fouls::NONE

**LSU - 45**

| NO.           | Name               | F/C | Min   | FG    | 3P  | FT    | Rebounds |    |     | Fouls |    | TP | AS | TO | ST | Blocks |    | +/- |
|---------------|--------------------|-----|-------|-------|-----|-------|----------|----|-----|-------|----|----|----|----|----|--------|----|-----|
|               |                    |     |       | M-A   | M-A | M-A   | OR       | DR | TOT | PF    | FD |    |    |    |    | BS     | BA |     |
| 12            | KJ Williams        | F   | 19:11 | 9-14  | 3-5 | 2-3   | 2        | 3  | 5   | 0     | 3  | 23 | 0  | 1  | 1  | 0      | 3  | 0   |
| 15            | Tyrell Ward        | F   | 09:17 | 0-0   | 0-0 | 0-0   | 0        | 1  | 1   | 1     | 0  | 0  | 0  | 0  | 1  | 0      | 0  | -2  |
| 20            | Derek Fountain     | F   | 10:58 | 1-2   | 0-0 | 0-0   | 1        | 1  | 2   | 2     | 0  | 2  | 1  | 0  | 0  | 1      | 0  | -1  |
| 1             | Cam Hayes          | G   | 04:08 | 0-1   | 0-0 | 2-2   | 0        | 1  | 1   | 1     | 1  | 2  | 0  | 0  | 0  | 0      | 0  | -6  |
| 44            | Adam Miller        | G   | 17:00 | 3-6   | 0-2 | 5-6   | 0        | 2  | 2   | 2     | 4  | 11 | 1  | 1  | 0  | 0      | 0  | -4  |
| 13            | Jalen Reed         |     | 04:04 | 0-0   | 0-0 | 2-2   | 0        | 0  | 0   | 3     | 1  | 2  | 0  | 0  | 0  | 0      | 0  | -2  |
| 34            | Shawn Phillips Jr. |     | 05:47 | 0-0   | 0-0 | 0-0   | 0        | 1  | 1   | 3     | 0  | 0  | 1  | 0  | 0  | 0      | 0  | 3   |
| 0             | Trae Hannibal      |     | 13:43 | 0-0   | 0-0 | 2-2   | 0        | 0  | 0   | 1     | 1  | 2  | 0  | 0  | 1  | 0      | 0  | 6   |
| 3             | Justice Hill       |     | 15:52 | 1-3   | 0-1 | 1-2   | 1        | 0  | 1   | 0     | 1  | 3  | 2  | 0  | 0  | 0      | 0  | 6   |
| Team          |                    |     |       |       |     |       | 0        | 0  | 0   |       |    | 0  |    | 0  |    |        |    |     |
| <b>Totals</b> |                    |     |       | 14-26 | 3-8 | 14-17 | 4        | 9  | 13  | 13    | 11 | 45 | 5  | 2  | 3  | 1      | 3  | 0   |

| Shooting By Period  |       |       |
|---------------------|-------|-------|
| 2 <sup>nd</sup> FG% | 14-26 | 53.8% |
| 3PT%                | 3-8   | 37.5% |
| FT%                 | 14-17 | 82.4% |
| GM FG%              | 14-26 | 53.8% |
| 3PT%                | 3-8   | 37.5% |
| FT%                 | 14-17 | 82.4% |

Dead Ball Rebounds: 1, 0

Technical Fouls::NONE

|                  | VAN                       | LSU                       |
|------------------|---------------------------|---------------------------|
| Biggest lead     | 1 (2 <sup>nd</sup> 12:42) | 11 (2 <sup>nd</sup> 4:17) |
| Best Scoring Run | 6(2 <sup>nd</sup> 17:41)  | 6(2 <sup>nd</sup> 10:20)  |
| Lead Changes     | 2                         |                           |
| Times Tied       | 1                         |                           |
| Time with Lead   | 00:30                     | 18:52                     |

| Points from   | VAN | LSU |
|---------------|-----|-----|
| Turnovers     | 4   | 8   |
| Paint         | 20  | 16  |
| Second Chance | 5   | 6   |
| Fast Breaks   | 4   | 4   |
| Bench         | 12  | 7   |

|     | Period by Period Scoring |     |     |
|-----|--------------------------|-----|-----|
|     | 1st                      | 2nd | TOT |
| VAN | 32                       | 45  | 77  |
| LSU | 39                       | 45  | 84  |



**Vanderbilt at LSU**

02/22/23 Maravich Assembly Center, Baton Rouge  
2022-23 Men's Basketball

**Game Time:** 6:00 PM  
**Game Duration:** 2:05  
**Attendance:** 8,827

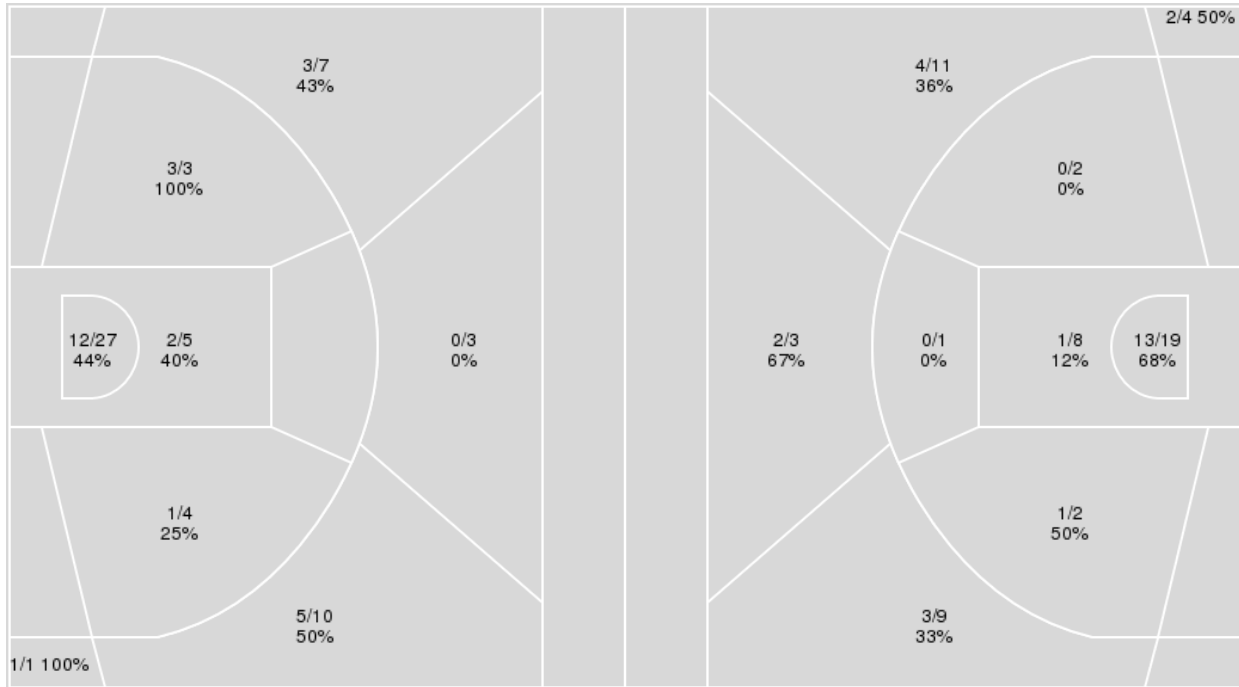
**Officials:** Joe Lindsay, Vladimir Voyard-Tadal, Patrick Evans

{ Players => 0, 1, 2, 3, 4, 5, 10, 11, 12, 13, 15, 20, 21, 25, 30, 34, 44; }  
FG Types => All; Results => All;

{ Players => 0, 1, 2, 3, 4, 5, 10, 11, 12, 20, 21, 22, 23, 25, 34, 42; } FG  
Types => All; Results => All;

**LSU**

**Vanderbilt**



| LSU         | M/A   | %  |
|-------------|-------|----|
| Field Goals | 27/60 | 45 |
| 2 Points    | 18/39 | 46 |
| 3 Points    | 9/21  | 43 |
| Free Throws | 21/27 | 78 |

| Vanderbilt  | M/A   | %  |
|-------------|-------|----|
| Field Goals | 26/59 | 44 |
| 2 Points    | 15/32 | 47 |
| 3 Points    | 11/27 | 41 |
| Free Throws | 14/23 | 61 |



**Vanderbilt at LSU**

02/22/23 Maravich Assembly Center, Baton Rouge  
2022-23 Men's Basketball

Game Time: 6:00 PM  
Game Duration: 2:05  
Attendance: 8,827

Officials: Joe Lindsay, Vladimir Voyard-Tadal, Patrick Evans

**Vanderbilt**

| No | Name                  | Mins  |       | Score   |         | Points Diff |     | Points per Min |      | Assists |     | Rebounds |     | Steals |     | Turnovers |     |
|----|-----------------------|-------|-------|---------|---------|-------------|-----|----------------|------|---------|-----|----------|-----|--------|-----|-----------|-----|
|    |                       | On    | Off   | On      | Off     | On          | Off | On             | Off  | On      | Off | On       | Off | On     | Off | On        | Off |
| 0  | Tyrin Lawrence        | 31:45 | 08:15 | 67 - 72 | 10 - 12 | -5          | -2  | 2.11           | 1.21 | 12      | 2   | 24       | 11  | 2      | 0   | 7         | 1   |
| 1  | Colin Smith           | 16:04 | 23:56 | 29 - 38 | 48 - 46 | -9          | 2   | 1.80           | 2.01 | 3       | 11  | 13       | 22  | 2      | 0   | 1         | 7   |
| 3  | Paul Lewis            | 06:34 | 33:26 | 5 - 14  | 72 - 70 | -9          | 2   | 0.76           | 2.15 | 1       | 13  | 5        | 30  | 0      | 2   | 0         | 8   |
| 4  | Jordan Wright         | 19:09 | 20:51 | 38 - 40 | 39 - 44 | -2          | -5  | 1.98           | 1.87 | 7       | 7   | 15       | 20  | 0      | 2   | 6         | 2   |
| 5  | Ezra Manjon           | 27:15 | 12:45 | 59 - 53 | 18 - 31 | 6           | -13 | 2.17           | 1.41 | 12      | 2   | 26       | 9   | 2      | 0   | 6         | 2   |
| 10 | Myles Stute           | 14:18 | 25:42 | 22 - 27 | 55 - 57 | -5          | -2  | 1.54           | 2.14 | 4       | 10  | 14       | 21  | 0      | 2   | 3         | 5   |
| 12 | Trey Thomas           | 39:05 | 00:55 | 77 - 81 | 0 - 3   | -4          | -3  | 1.97           | 0.00 | 14      | 0   | 35       | 0   | 2      | 0   | 8         | 0   |
| 20 | Emmanuel Ansong       | 03:31 | 36:29 | 7 - 6   | 70 - 78 | 1           | -8  | 1.99           | 1.92 | 2       | 12  | 5        | 30  | 0      | 2   | 1         | 7   |
| 21 | Liam Robbins          | 33:35 | 06:25 | 67 - 71 | 10 - 13 | -4          | -3  | 2.00           | 1.56 | 13      | 1   | 33       | 2   | 1      | 1   | 7         | 1   |
| 42 | Quentin Millora-Brown | 08:44 | 31:16 | 14 - 18 | 63 - 66 | -4          | -3  | 1.60           | 2.01 | 2       | 12  | 5        | 30  | 1      | 1   | 1         | 7   |

**LSU**

| No | Name               | Mins  |       | Score   |         | Points Diff |     | Points per Min |      | Assists |     | Rebounds |     | Steals |     | Turnovers |     |
|----|--------------------|-------|-------|---------|---------|-------------|-----|----------------|------|---------|-----|----------|-----|--------|-----|-----------|-----|
|    |                    | On    | Off   | On      | Off     | On          | Off | On             | Off  | On      | Off | On       | Off | On     | Off | On        | Off |
| 0  | Trae Hannibal      | 21:46 | 18:14 | 55 - 40 | 29 - 37 | 15          | -8  | 2.53           | 1.59 | 8       | 7   | 24       | 16  | 3      | 3   | 1         | 6   |
| 1  | Cam Hayes          | 18:58 | 21:02 | 31 - 32 | 53 - 45 | -1          | 8   | 1.63           | 2.52 | 7       | 8   | 21       | 19  | 3      | 3   | 4         | 3   |
| 3  | Justice Hill       | 27:02 | 12:58 | 62 - 50 | 22 - 27 | 12          | -5  | 2.29           | 1.70 | 10      | 5   | 28       | 12  | 4      | 2   | 6         | 1   |
| 12 | KJ Williams        | 35:55 | 04:05 | 78 - 71 | 6 - 6   | 7           | 0   | 2.17           | 1.47 | 14      | 1   | 35       | 5   | 5      | 1   | 5         | 2   |
| 13 | Jalen Reed         | 15:03 | 24:57 | 28 - 26 | 56 - 51 | 2           | 5   | 1.86           | 2.24 | 5       | 10  | 16       | 24  | 2      | 4   | 3         | 4   |
| 15 | Tyrell Ward        | 18:07 | 21:53 | 35 - 36 | 49 - 41 | -1          | 8   | 1.93           | 2.24 | 7       | 8   | 14       | 26  | 3      | 3   | 3         | 4   |
| 20 | Derek Fountain     | 20:08 | 19:52 | 43 - 42 | 41 - 35 | 1           | 6   | 2.14           | 2.06 | 9       | 6   | 20       | 20  | 3      | 3   | 5         | 2   |
| 34 | Shawn Phillips Jr. | 10:03 | 29:57 | 19 - 18 | 65 - 59 | 1           | 6   | 1.89           | 2.17 | 2       | 13  | 10       | 30  | 2      | 4   | 2         | 5   |
| 44 | Adam Miller        | 32:58 | 07:02 | 69 - 70 | 15 - 7  | -1          | 8   | 2.09           | 2.13 | 13      | 2   | 32       | 8   | 5      | 1   | 6         | 1   |





**Vanderbilt at LSU**

02/22/23 Maravich Assembly Center, Baton Rouge  
2022-23 Men's Basketball

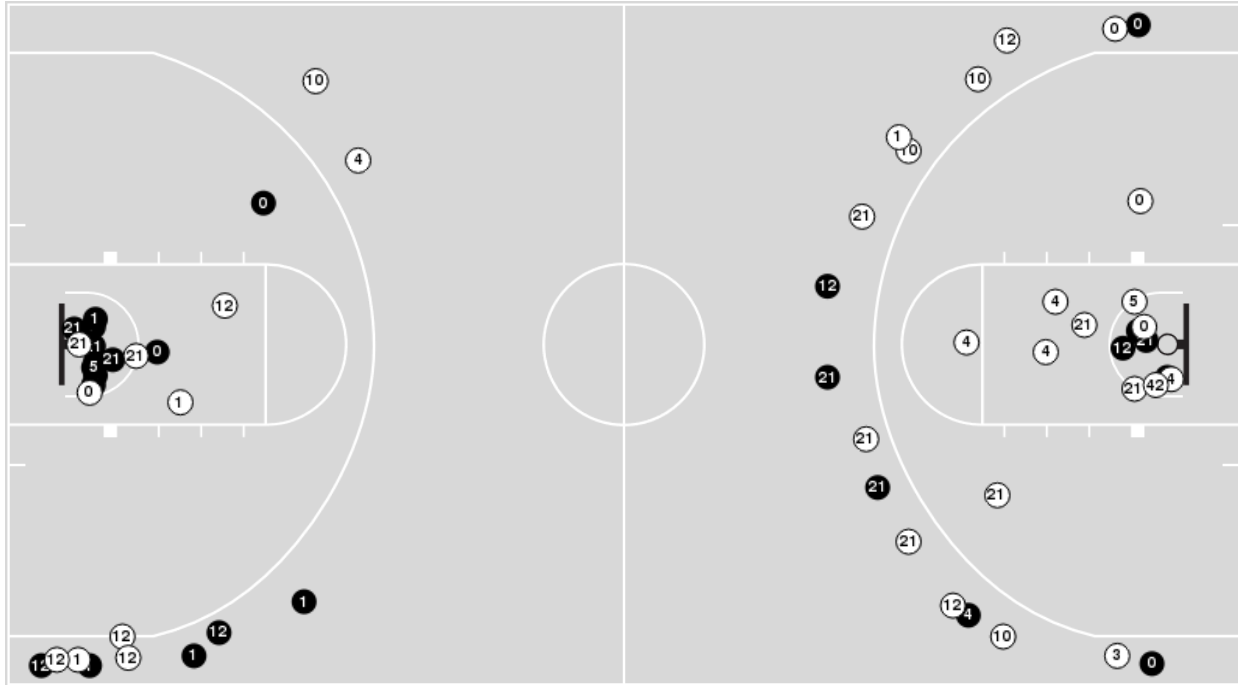
Game Time: 6:00 PM  
Game Duration: 2:05  
Attendance: 8,827

Officials: Joe Lindsay, Vladimir Voyard-Tadal, Patrick Evans

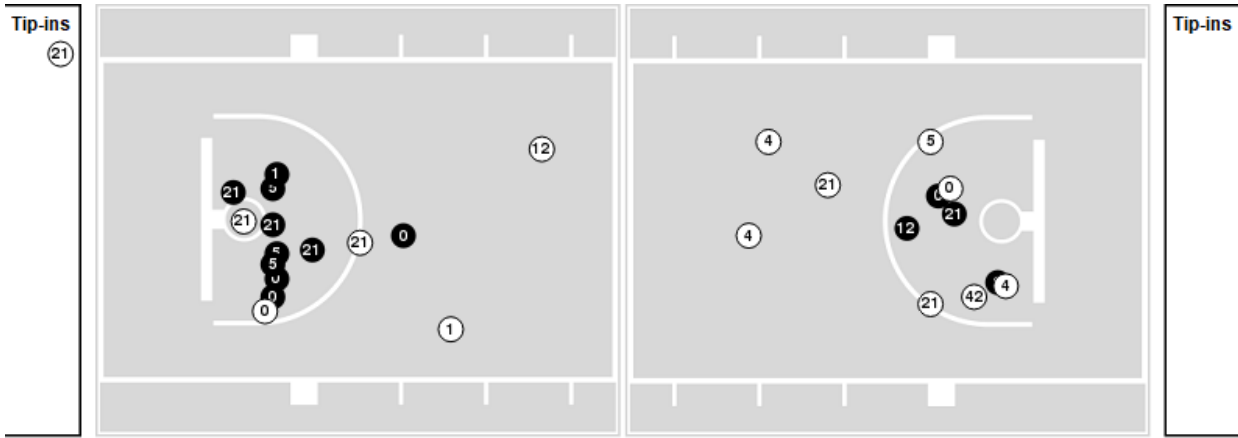
Players => 0, 1, 2, 3, 4, 5, 10, 11, 12, 20, 21, 22, 23, 25, 34, 42 FG Types=>All Results=>All

**Vanderbilt**

**All Field Goals**



**Blow Up Chart**



● Made    ○ Missed    N - Player Number

| Vanderbilt  | M/A   | %  |
|-------------|-------|----|
| Field Goals | 26/59 | 44 |
| 2 Points    | 15/32 | 47 |
| 3 Points    | 11/27 | 41 |
| Free Throws | 14/23 | 61 |

| Vanderbilt           | M/A          | %  |
|----------------------|--------------|----|
| Points in the Paint  | 28 (14 / 27) | 52 |
| Fast Break Points    | 6 (4/5)      | 80 |
| Second Chance Points | 12 (7/13)    | 54 |
| Effective FG%        | 53           |    |



**Vanderbilt at LSU**

02/22/23 Maravich Assembly Center, Baton Rouge  
2022-23 Men's Basketball

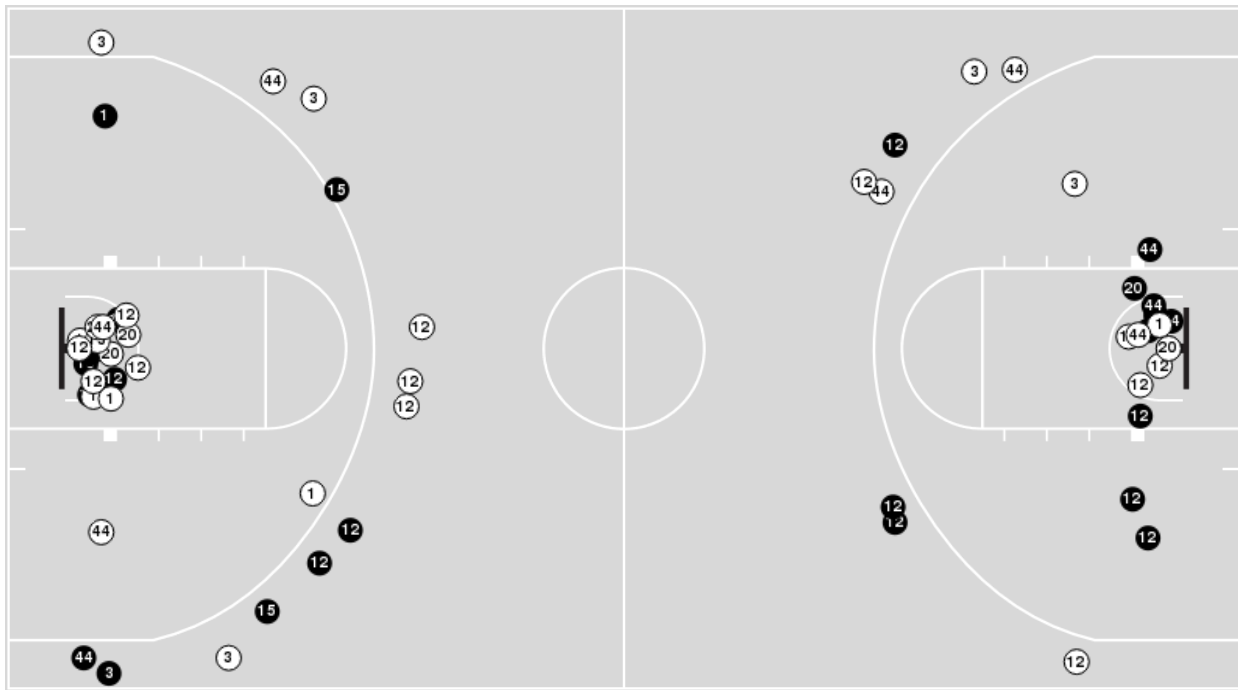
**Game Time:** 6:00 PM  
**Game Duration:** 2:05  
**Attendance:** 8,827

**Officials:** Joe Lindsay, Vladimir Voyard-Tadal, Patrick Evans

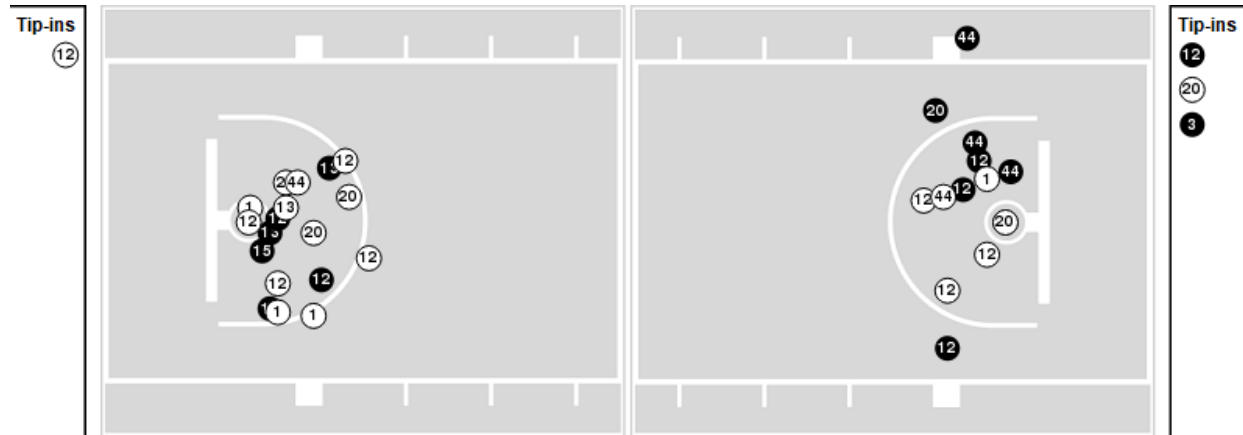
Players => 0, 1, 2, 3, 4, 5, 10, 11, 12, 13, 15, 20, 21, 25, 30, 34, 44 FG Types=>All Results=>All

**LSU**

**All Field Goals**



**Blow Up Chart**



● Made ○ Missed N - Player Number

| LSU         | M/A   | %  |
|-------------|-------|----|
| Field Goals | 27/60 | 45 |
| 2 Points    | 18/39 | 46 |
| 3 Points    | 9/21  | 43 |
| Free Throws | 21/27 | 78 |

| LSU                  | M/A          | %  |
|----------------------|--------------|----|
| Points in the Paint  | 28 (14 / 32) | 44 |
| Fast Break Points    | 9 (7/9)      | 78 |
| Second Chance Points | 14 (7/13)    | 54 |
| Effective FG%        | 52           |    |



Official Basketball Rotations Summary - Final  
**Vanderbilt at LSU**  
 02/22/23 Maravich Assembly Center, Baton Rouge  
 2022-23 Men's Basketball

**Game Time:** 6:00 PM  
**Game Duration:** 2:05  
**Attendance:** 8,827

**Officials:** Joe Lindsay, Vladimir Voyard-Tadal, Patrick Evans

**Vanderbilt**

| Lineup   | Quarter On | Time On | Quarter Off | Time Off | Time on Court | Score | Score Diff | Reb | Stl | Tov | Ass | PPP    |
|--|------------|---------|-------------|----------|---------------|-------|------------|-----|-----|-----|-----|--------|
| 0- Lawrence T/ 5- Manjon E/ 10- Stute M/ 12- Thomas T/ 21- Robbins L/        | 1          | 20:00   | 1           | 16:58    | 03:02         | 6-2   | 4          | 3   | 0   | 1   | 2   | 1.0000 |
| 0- Lawrence T/ 4- Wright J/ 10- Stute M/ 12- Thomas T/ 21- Robbins L/        | 1          | 16:58   | 1           | 14:22    | 02:36         | 5-9   | -4         | 2   | 0   | 2   | 1   | 1.0246 |
| 0- Lawrence T/ 1- Smith C/ 4- Wright J/ 12- Thomas T/ 21- Robbins L/         | 1          | 14:22   | 1           | 13:59    | 00:23         | 2-0   | 2          | 0   | 0   | 0   | 0   | 2.0000 |
| 0- Lawrence T/ 1- Smith C/ 4- Wright J/ 12- Thomas T/ 42- Millora-Brown Q/   | 1          | 13:59   | 1           | 11:58    | 02:01         | 3-4   | -1         | 0   | 0   | 0   | 0   | 0.8721 |
| 1- Smith C/ 3- Lewis P/ 4- Wright J/ 12- Thomas T/ 42- Millora-Brown Q/      | 1          | 11:58   | 1           | 10:34    | 01:24         | 2-0   | 2          | 2   | 0   | 0   | 0   | 0.6667 |
| 1- Smith C/ 3- Lewis P/ 4- Wright J/ 12- Thomas T/ 21- Robbins L/            | 1          | 10:34   | 1           | 10:34    | 00:00         | 0-0   | 0          | 0   | 0   | 0   | 0   | 0.0000 |
| 1- Smith C/ 3- Lewis P/ 10- Stute M/ 12- Thomas T/ 21- Robbins L/            | 1          | 10:34   | 1           | 07:56    | 02:38         | 0-6   | -6         | 2   | 0   | 0   | 0   | 0.0000 |
| 0- Lawrence T/ 1- Smith C/ 3- Lewis P/ 10- Stute M/ 21- Robbins L/           | 1          | 07:56   | 1           | 07:01    | 00:55         | 0-3   | -3         | 0   | 0   | 0   | 0   | 0.0000 |
| 0- Lawrence T/ 1- Smith C/ 10- Stute M/ 12- Thomas T/ 21- Robbins L/         | 1          | 07:01   | 1           | 05:50    | 01:11         | 3-4   | -1         | 2   | 0   | 0   | 0   | 1.5000 |
| 4- Wright J/ 5- Manjon E/ 12- Thomas T/ 20- Ansong E/ 21- Robbins L/         | 1          | 05:50   | 1           | 02:19    | 03:31         | 7-6   | 1          | 5   | 0   | 1   | 2   | 1.6204 |
| 4- Wright J/ 5- Manjon E/ 12- Thomas T/ 21- Robbins L/ 42- Millora-Brown Q/  | 1          | 02:19   | 1           | 01:37    | 00:42         | 1-0   | 1          | 2   | 0   | 0   | 0   | 0.6944 |
| 0- Lawrence T/ 3- Lewis P/ 12- Thomas T/ 21- Robbins L/ 42- Millora-Brown Q/ | 1          | 01:37   | 2           | 20:00    | 01:37         | 3-5   | -2         | 1   | 0   | 0   | 1   | 1.2295 |
| 0- Lawrence T/ 5- Manjon E/ 10- Stute M/ 12- Thomas T/ 21- Robbins L/        | 2          | 20:00   | 2           | 16:04    | 03:56         | 8-3   | 5          | 5   | 0   | 0   | 1   | 1.3333 |
| 0- Lawrence T/ 4- Wright J/ 5- Manjon E/ 12- Thomas T/ 21- Robbins L/        | 2          | 16:04   | 2           | 07:32    | 08:32         | 18-21 | -3         | 4   | 0   | 3   | 4   | 1.3889 |
| 0- Lawrence T/ 1- Smith C/ 5- Manjon E/ 12- Thomas T/ 42- Millora-Brown Q/   | 2          | 07:32   | 2           | 04:32    | 03:00         | 5-9   | -4         | 0   | 1   | 1   | 1   | 1.0000 |
| 0- Lawrence T/ 1- Smith C/ 5- Manjon E/ 12- Thomas T/ 21- Robbins L/         | 2          | 04:32   | 2           | 00:00    | 04:32         | 14-12 | 2          | 7   | 1   | 0   | 2   | 1.8325 |



**Vanderbilt at LSU**

**LSU**

| Lineup  | Quarter On | Time On | Quarter Off | Time Off | Time on Court | Score | Score Diff | Reb | Stl | Tov | Ass | PPP    |
|---|------------|---------|-------------|----------|---------------|-------|------------|-----|-----|-----|-----|--------|
| 1- Hayes C/ 12- Williams K/ 15- Ward T/ 20- Fountain D/ 44- Miller A/       | 1          | 20:00   | 1           | 15:22    | 04:38         | 5-9   | -4         | 4   | 1   | 1   | 2   | 0.7143 |
| 1- Hayes C/ 3- Hill J/ 12- Williams K/ 20- Fountain D/ 44- Miller A/        | 1          | 15:22   | 1           | 14:22    | 01:00         | 6-2   | 4          | 2   | 1   | 1   | 2   | 2.0000 |
| 3- Hill J/ 12- Williams K/ 13- Reed J/ 20- Fountain D/ 44- Miller A/        | 1          | 14:22   | 1           | 13:13    | 01:09         | 0-3   | -3         | 1   | 0   | 1   | 0   | 0.0000 |
| 1- Hayes C/ 3- Hill J/ 12- Williams K/ 13- Reed J/ 44- Miller A/            | 1          | 13:13   | 1           | 13:00    | 00:13         | 1-0   | 1          | 0   | 0   | 0   | 0   | 2.2727 |
| 1- Hayes C/ 3- Hill J/ 13- Reed J/ 34- Phillips Jr. S/ 44- Miller A/        | 1          | 13:00   | 1           | 11:58    | 01:02         | 3-2   | 1          | 2   | 0   | 1   | 1   | 1.2295 |
| 0- Hannibal T/ 1- Hayes C/ 3- Hill J/ 13- Reed J/ 34- Phillips Jr. S/       | 1          | 11:58   | 1           | 10:34    | 01:24         | 0-2   | -2         | 2   | 0   | 0   | 0   | 0.0000 |
| 0- Hannibal T/ 1- Hayes C/ 3- Hill J/ 12- Williams K/ 13- Reed J/           | 1          | 10:34   | 1           | 07:56    | 02:38         | 6-0   | 6          | 4   | 0   | 0   | 1   | 1.2000 |
| 0- Hannibal T/ 12- Williams K/ 15- Ward T/ 20- Fountain D/ 44- Miller A/    | 1          | 07:56   | 1           | 05:50    | 02:06         | 7-3   | 4          | 5   | 0   | 0   | 2   | 1.6204 |
| 1- Hayes C/ 12- Williams K/ 15- Ward T/ 20- Fountain D/ 44- Miller A/       | 1          | 05:50   | 1           | 05:33    | 00:17         | 1-0   | 1          | 0   | 0   | 0   | 0   | 1.1364 |
| 1- Hayes C/ 12- Williams K/ 13- Reed J/ 15- Ward T/ 44- Miller A/           | 1          | 05:33   | 1           | 04:09    | 01:24         | 4-5   | -1         | 1   | 1   | 0   | 1   | 1.6393 |
| 1- Hayes C/ 13- Reed J/ 15- Ward T/ 34- Phillips Jr. S/ 44- Miller A/       | 1          | 04:09   | 1           | 03:44    | 00:25         | 1-0   | 1          | 0   | 0   | 0   | 0   | 2.2727 |
| 1- Hayes C/ 3- Hill J/ 13- Reed J/ 34- Phillips Jr. S/ 44- Miller A/        | 1          | 03:44   | 1           | 03:19    | 00:25         | 0-0   | 0          | 1   | 0   | 1   | 0   | 0.0000 |
| 1- Hayes C/ 3- Hill J/ 12- Williams K/ 34- Phillips Jr. S/ 44- Miller A/    | 1          | 03:19   | 1           | 02:19    | 01:00         | 0-2   | -2         | 2   | 0   | 0   | 0   | 0.0000 |
| 1- Hayes C/ 3- Hill J/ 12- Williams K/ 13- Reed J/ 44- Miller A/            | 1          | 02:19   | 1           | 01:55    | 00:24         | 0-0   | 0          | 1   | 0   | 0   | 0   | 0.0000 |
| 0- Hannibal T/ 3- Hill J/ 12- Williams K/ 13- Reed J/ 44- Miller A/         | 1          | 01:55   | 2           | 20:00    | 01:55         | 5-4   | 1          | 2   | 0   | 0   | 1   | 1.4535 |
| 1- Hayes C/ 12- Williams K/ 15- Ward T/ 20- Fountain D/ 44- Miller A/       | 2          | 20:00   | 2           | 17:07    | 02:53         | 2-6   | -4         | 1   | 0   | 0   | 0   | 0.4098 |
| 1- Hayes C/ 12- Williams K/ 13- Reed J/ 15- Ward T/ 44- Miller A/           | 2          | 17:07   | 2           | 16:04    | 01:03         | 1-2   | -1         | 1   | 0   | 0   | 0   | 0.6944 |
| 1- Hayes C/ 13- Reed J/ 15- Ward T/ 34- Phillips Jr. S/ 44- Miller A/       | 2          | 16:04   | 2           | 15:57    | 00:07         | 1-0   | 1          | 0   | 0   | 0   | 0   | 2.2727 |
| 0- Hannibal T/ 1- Hayes C/ 13- Reed J/ 34- Phillips Jr. S/ 44- Miller A/    | 2          | 15:57   | 2           | 15:52    | 00:05         | 0-2   | -2         | 0   | 0   | 0   | 0   | 0.0000 |
| 0- Hannibal T/ 3- Hill J/ 13- Reed J/ 34- Phillips Jr. S/ 44- Miller A/     | 2          | 15:52   | 2           | 15:15    | 00:37         | 1-0   | 1          | 0   | 1   | 0   | 0   | 2.2727 |
| 0- Hannibal T/ 3- Hill J/ 12- Williams K/ 13- Reed J/ 44- Miller A/         | 2          | 15:15   | 2           | 14:31    | 00:44         | 1-2   | -1         | 0   | 0   | 0   | 0   | 0.6944 |
| 0- Hannibal T/ 3- Hill J/ 12- Williams K/ 34- Phillips Jr. S/ 44- Miller A/ | 2          | 14:31   | 2           | 09:33    | 04:58         | 13-10 | 3          | 3   | 1   | 0   | 1   | 1.7760 |
| 0- Hannibal T/ 3- Hill J/ 12- Williams K/ 20- Fountain D/ 44- Miller A/     | 2          | 09:33   | 2           | 07:32    | 02:01         | 5-4   | 1          | 4   | 0   | 0   | 1   | 1.6667 |
| 0- Hannibal T/ 3- Hill J/ 12- Williams K/ 15- Ward T/ 20- Fountain D/       | 2          | 07:32   | 2           | 04:32    | 03:00         | 9-5   | 4          | 2   | 1   | 1   | 1   | 1.8443 |
| 3- Hill J/ 12- Williams K/ 15- Ward T/ 20- Fountain D/ 44- Miller A/        | 2          | 04:32   | 2           | 02:18    | 02:14         | 4-6   | -2         | 0   | 0   | 1   | 1   | 1.0000 |
| 0- Hannibal T/ 3- Hill J/ 12- Williams K/ 13- Reed J/ 44- Miller A/         | 2          | 02:18   | 2           | 00:50    | 01:28         | 4-4   | 0          | 1   | 0   | 0   | 1   | 2.1277 |
| 0- Hannibal T/ 3- Hill J/ 12- Williams K/ 20- Fountain D/ 44- Miller A/     | 2          | 00:50   | 2           | 00:00    | 00:50         | 4-4   | 0          | 1   | 0   | 0   | 0   | 2.2727 |



Official Basketball Line Up Analysis - Final  
**Vanderbilt at LSU**  
 02/22/23 Maravich Assembly Center, Baton Rouge  
 2022-23 Men's Basketball

**Game Time:** 6:00 PM  
**Game Duration:** 2:05  
**Attendance:** 8,827

**Officials:** Joe Lindsay, Vladimir Voyard-Tadal, Patrick Evans

**Vanderbilt**

| Lineup   | Time  | Score | Score Diff | Pts/Min | Reb | Stl | Tov | Ass | PPP    |
|--|-------|-------|------------|---------|-----|-----|-----|-----|--------|
| 0- Lawrence T/ 4- Wright J/ 5- Manjon E/ 12- Thomas T/ 21- Robbins L/        | 08:32 | 18-21 | -3         | 2.1094  | 4   | 0   | 3   | 4   | 1.3889 |
| 0- Lawrence T/ 5- Manjon E/ 10- Stute M/ 12- Thomas T/ 21- Robbins L/        | 06:58 | 14-5  | 9          | 2.0096  | 8   | 0   | 1   | 3   | 1.1667 |
| 0- Lawrence T/ 1- Smith C/ 5- Manjon E/ 12- Thomas T/ 21- Robbins L/         | 04:32 | 14-12 | 2          | 3.0882  | 7   | 1   | 0   | 2   | 1.8325 |
| 4- Wright J/ 5- Manjon E/ 12- Thomas T/ 20- Ansong E/ 21- Robbins L/         | 03:31 | 7-6   | 1          | 1.9905  | 5   | 0   | 1   | 2   | 1.6204 |
| 0- Lawrence T/ 1- Smith C/ 5- Manjon E/ 12- Thomas T/ 42- Millora-Brown Q/   | 03:00 | 5-9   | -4         | 1.6667  | 0   | 1   | 1   | 1   | 1.0000 |
| 1- Smith C/ 3- Lewis P/ 10- Stute M/ 12- Thomas T/ 21- Robbins L/            | 02:38 | 0-6   | -6         | 0.0000  | 2   | 0   | 0   | 0   | 0.0000 |
| 0- Lawrence T/ 4- Wright J/ 10- Stute M/ 12- Thomas T/ 21- Robbins L/        | 02:36 | 5-9   | -4         | 1.9231  | 2   | 0   | 2   | 1   | 1.0246 |
| 0- Lawrence T/ 1- Smith C/ 4- Wright J/ 12- Thomas T/ 42- Millora-Brown Q/   | 02:01 | 3-4   | -1         | 1.4876  | 0   | 0   | 0   | 0   | 0.8721 |
| 0- Lawrence T/ 3- Lewis P/ 12- Thomas T/ 21- Robbins L/ 42- Millora-Brown Q/ | 01:37 | 3-5   | -2         | 1.8557  | 1   | 0   | 0   | 1   | 1.2295 |
| 1- Smith C/ 3- Lewis P/ 4- Wright J/ 12- Thomas T/ 42- Millora-Brown Q/      | 01:24 | 2-0   | 2          | 1.4286  | 2   | 0   | 0   | 0   | 0.6667 |
| 0- Lawrence T/ 1- Smith C/ 10- Stute M/ 12- Thomas T/ 21- Robbins L/         | 01:11 | 3-4   | -1         | 2.5352  | 2   | 0   | 0   | 0   | 1.5000 |
| 0- Lawrence T/ 1- Smith C/ 3- Lewis P/ 10- Stute M/ 21- Robbins L/           | 00:55 | 0-3   | -3         | 0.0000  | 0   | 0   | 0   | 0   | 0.0000 |
| 4- Wright J/ 5- Manjon E/ 12- Thomas T/ 21- Robbins L/ 42- Millora-Brown Q/  | 00:42 | 1-0   | 1          | 1.4286  | 2   | 0   | 0   | 0   | 0.6944 |
| 0- Lawrence T/ 1- Smith C/ 4- Wright J/ 12- Thomas T/ 21- Robbins L/         | 00:23 | 2-0   | 2          | 5.2174  | 0   | 0   | 0   | 0   | 2.0000 |
| 1- Smith C/ 3- Lewis P/ 4- Wright J/ 12- Thomas T/ 21- Robbins L/            | 00:00 | 0-0   | 0          | NaN     | 0   | 0   | 0   | 0   | 0.0000 |



Official Basketball Line Up Analysis - Final  
**Vanderbilt at LSU**  
 02/22/23 Maravich Assembly Center, Baton Rouge  
 2022-23 Men's Basketball

**Game Time:** 6:00 PM  
**Game Duration:** 2:05  
**Attendance:** 8,827

**Officials:** Joe Lindsay, Vladimir Voyard-Tadal, Patrick Evans

**LSU**

| Lineup  | Time  | Score | Score Diff | Pts/Min | Reb | Stl | Tov | Ass | PPP    |
|---|-------|-------|------------|---------|-----|-----|-----|-----|--------|
| 1- Hayes C/ 12- Williams K/ 15- Ward T/ 20- Fountain D/ 44- Miller A/       | 07:48 | 8-15  | -7         | 1.0256  | 5   | 1   | 1   | 2   | 0.6270 |
| 0- Hannibal T/ 3- Hill J/ 12- Williams K/ 34- Phillips Jr. S/ 44- Miller A/ | 04:58 | 13-10 | 3          | 2.6174  | 3   | 1   | 0   | 1   | 1.7760 |
| 0- Hannibal T/ 3- Hill J/ 12- Williams K/ 13- Reed J/ 44- Miller A/         | 04:07 | 10-10 | 0          | 2.4291  | 3   | 0   | 0   | 2   | 1.4793 |
| 0- Hannibal T/ 3- Hill J/ 12- Williams K/ 15- Ward T/ 20- Fountain D/       | 03:00 | 9-5   | 4          | 3.0000  | 2   | 1   | 1   | 1   | 1.8443 |
| 0- Hannibal T/ 3- Hill J/ 12- Williams K/ 20- Fountain D/ 44- Miller A/     | 02:51 | 9-8   | 1          | 3.1579  | 5   | 0   | 0   | 1   | 1.8908 |
| 0- Hannibal T/ 1- Hayes C/ 3- Hill J/ 12- Williams K/ 13- Reed J/           | 02:38 | 6-0   | 6          | 2.2785  | 4   | 0   | 0   | 1   | 1.2000 |
| 1- Hayes C/ 12- Williams K/ 13- Reed J/ 15- Ward T/ 44- Miller A/           | 02:27 | 5-7   | -2         | 2.0408  | 2   | 1   | 0   | 1   | 1.2887 |
| 3- Hill J/ 12- Williams K/ 15- Ward T/ 20- Fountain D/ 44- Miller A/        | 02:14 | 4-6   | -2         | 1.7910  | 0   | 0   | 1   | 1   | 1.0000 |
| 0- Hannibal T/ 12- Williams K/ 15- Ward T/ 20- Fountain D/ 44- Miller A/    | 02:06 | 7-3   | 4          | 3.3333  | 5   | 0   | 0   | 2   | 1.6204 |
| 1- Hayes C/ 3- Hill J/ 13- Reed J/ 34- Phillips Jr. S/ 44- Miller A/        | 01:27 | 3-2   | 1          | 2.0690  | 3   | 0   | 2   | 1   | 0.8721 |
| 0- Hannibal T/ 1- Hayes C/ 3- Hill J/ 13- Reed J/ 34- Phillips Jr. S/       | 01:24 | 0-2   | -2         | 0.0000  | 2   | 0   | 0   | 0   | 0.0000 |
| 3- Hill J/ 12- Williams K/ 13- Reed J/ 20- Fountain D/ 44- Miller A/        | 01:09 | 0-3   | -3         | 0.0000  | 1   | 0   | 1   | 0   | 0.0000 |
| 1- Hayes C/ 3- Hill J/ 12- Williams K/ 20- Fountain D/ 44- Miller A/        | 01:00 | 6-2   | 4          | 6.0000  | 2   | 1   | 1   | 2   | 2.0000 |
| 1- Hayes C/ 3- Hill J/ 12- Williams K/ 34- Phillips Jr. S/ 44- Miller A/    | 01:00 | 0-2   | -2         | 0.0000  | 2   | 0   | 0   | 0   | 0.0000 |
| 1- Hayes C/ 3- Hill J/ 12- Williams K/ 13- Reed J/ 44- Miller A/            | 00:37 | 1-0   | 1          | 1.6216  | 1   | 0   | 0   | 0   | 2.2727 |
| 0- Hannibal T/ 3- Hill J/ 13- Reed J/ 34- Phillips Jr. S/ 44- Miller A/     | 00:37 | 1-0   | 1          | 1.6216  | 0   | 1   | 0   | 0   | 2.2727 |
| 1- Hayes C/ 13- Reed J/ 15- Ward T/ 34- Phillips Jr. S/ 44- Miller A/       | 00:32 | 2-0   | 2          | 3.7500  | 0   | 0   | 0   | 0   | 2.2727 |
| 0- Hannibal T/ 1- Hayes C/ 13- Reed J/ 34- Phillips Jr. S/ 44- Miller A/    | 00:05 | 0-2   | -2         | 0.0000  | 0   | 0   | 0   | 0   | 0.0000 |