



LSU at Missouri

02/01/23 Mizzou Arena, Columbia  
2022-23 Men's Basketball

Game Time: 8:00 PM  
Game Duration: 2:04  
Attendance: 12,769

Officials: Don Daily, Steven Anderson, Olandis Poole

LSU - 77

Record: 12-10 (1-8)

NO.	Name	Min	FG			3P			FT			Rebounds			Fouls		TP	AS	TO	ST	Blocks		+/-
			M-A	M-A	M-A	OR	DR	TOT	PF	FD	BS	BA											
12	KJ Williams	F 33:14	6-10	1-3	2-2	4	7	11	3	2	15	1	0	0	2	0	-18						
20	Derek Fountain	F 30:47	5-12	0-1	1-3	6	5	11	3	3	11	0	0	1	0	-4							
1	Cam Hayes	G 20:54	4-7	2-4	0-0	0	0	0	4	0	10	3	0	0	0	-3							
11	Justice Williams	G 02:15	0-0	0-0	0-0	0	0	0	0	0	0	0	0	0	0	-8							
44	Adam Miller	G 34:21	3-12	3-11	2-2	0	1	1	1	1	11	1	4	4	0	-9							
3	Justice Hill	35:30	4-15	3-11	2-2	1	1	2	0	2	13	4	3	1	0	0							
0	Trae Hannibal	21:18	3-5	0-0	5-6	1	2	3	1	4	11	5	3	0	0	-1							
13	Jalen Reed	03:17	0-0	0-0	0-2	0	2	2	2	2	0	0	0	0	0	-5							
15	Tyrell Ward	07:51	2-5	2-3	0-0	0	0	0	4	0	6	0	1	0	0	-8							
34	Shawn Phillips Jr.	10:33	0-0	0-0	0-0	0	2	2	0	0	0	1	0	1	0	6							
Team						3	3	6			0			1									
<b>Totals</b>			27-66	11-33	12-17	15	23	38	18	14	77	15	12	7	2	4	-10						

Shooting By Period		
1 <sup>st</sup> FG%	12-30	40.0%
3PT%	6-18	33.3%
FT%	5-8	62.5%
2 <sup>nd</sup> FG%	15-36	41.7%
3PT%	5-15	33.3%
FT%	7-9	77.8%
GM FG%	27-66	40.9%
3PT%	11-33	33.3%
FT%	12-17	70.6%

Dead Ball Rebounds: 2, 0

Technical Fouls::NONE

Missouri - 87

Record: 17-5 (5-4)

NO.	Name	Min	FG			3P			FT			Rebounds			Fouls		TP	AS	TO	ST	Blocks		+/-
			M-A	M-A	M-A	OR	DR	TOT	PF	FD	BS	BA											
24	Kobe Brown	F 36:42	10-11	5-6	1-1	1	7	8	3	4	26	5	2	2	1	0	10						
35	Noah Carter	F 22:27	5-9	3-6	1-2	1	2	3	1	2	14	4	2	0	0	8							
5	D'Moi Hodge	G 31:35	4-7	0-2	0-0	0	2	2	2	0	8	3	1	1	1	-1							
10	Nick Honor	G 26:34	2-4	0-1	2-2	0	1	1	2	4	6	2	0	1	0	5							
11	Isiah Mosley	G 20:59	5-12	2-4	0-0	1	1	2	0	1	12	3	2	0	1	14							
4	DeAndre Gholston	18:34	4-8	3-5	3-4	0	1	1	2	4	14	1	1	0	0	6							
23	Aidan Shaw	06:47	0-0	0-0	0-0	0	1	1	2	0	0	1	0	1	0	0							
55	Sean East II	19:59	1-4	0-2	0-0	0	2	2	1	1	2	6	1	1	0	1							
0	Mohamed Diarra	14:04	2-4	0-1	1-3	1	9	10	1	2	5	1	0	0	1	2							
1	Kaleb Brown	02:19	0-0	0-0	0-0	0	0	0	0	0	0	0	0	0	0	5							
Team						1	1	2			0			1									
<b>Totals</b>			33-59	13-27	8-12	5	27	32	14	18	87	26	10	6	4	2	10						

Shooting By Period		
1 <sup>st</sup> FG%	17-32	53.1%
3PT%	11-23	47.8%
FT%	3-4	75%
2 <sup>nd</sup> FG%	16-27	59.3%
3PT%	2-4	50.0%
FT%	5-8	62.5%
GM FG%	33-59	55.9%
3PT%	13-27	48.1%
FT%	8-12	66.7%

Dead Ball Rebounds: 2, 0

Technical Fouls::NONE

	LSU	Mizzou
Biggest lead	0 (1 <sup>st</sup> 20:00)	18 (1 <sup>st</sup> 8:43)
Best Scoring Run	9(1 <sup>st</sup> 4:16)	8(1 <sup>st</sup> 17:46)
Lead Changes	0	
Times Tied	0	
Time with Lead	00:00	39:23

	LSU	Mizzou
Points from		
Turnovers	14	17
Paint	32	36
Second Chance	18	7
Fast Breaks	12	14
Bench	30	21

	Period by Period Scoring		
	1st	2nd	TOT
LSU	35	42	77
Mizzou	48	39	87



**LSU at Missouri**

02/01/23 Mizzou Arena, Columbia  
2022-23 Men's Basketball

**Game Time:** 8:00 PM  
**Game Duration:** 2:04  
**Attendance:** 12,769

**Officials:** Don Daily, Steven Anderson, Olandis Poole

**Period 1**

**Quarter Starters:**

<b>Mizzou</b>	5 Hodge D	10 Honor N	11 Mosley I	24 Brown K	35 Carter N
<b>LSU</b>	1 Hayes C	11 Williams J	12 Williams K	20 Fountain D	44 Miller A

Game Time	Mizzou	Score	Diff	LSU
20:00	35 CARTER N jumpball won			20 FOUNTAIN D jumpball lost
19:44	11 MOSLEY I foul drawn (1)			1 HAYES C foul personal (1 - 1)
19:23	24 BROWN K 3pt FG , jump shot made (3)	<b>3-0</b>	<b>3</b>	
19:23	35 CARTER N assist (1)			
18:48				turnover shot clock (1)
18:28	35 CARTER N 3pt FG from turnover, jump shot made (3)	<b>6-0</b>	<b>6</b>	
18:28	11 MOSLEY I assist (1)			
18:02				20 FOUNTAIN D 2pt FG in the paint, layup missed
17:59	11 MOSLEY I defensive rebound (1)			
17:56	11 MOSLEY I 2pt FG in the paint, jump shot missed			
17:55	35 CARTER N offensive rebound (1)			
17:55	35 CARTER N foul drawn (1)			20 FOUNTAIN D foul personal (1 - 2)
17:46	5 HODGE D 2pt FG second chance in the paint, layup made (2)	<b>8-0</b>	<b>8</b>	
17:46	35 CARTER N assist (2)			
17:45				Timeout 30 Sec
17:45				11 WILLIAMS J substitution out
17:45				3 HILL J substitution in
17:19		<b>8-3</b>	<b>5</b>	1 HAYES C 3pt FG , jump shot made (3)
16:52	35 CARTER N 3pt FG , jump shot made (6)	<b>11-3</b>	<b>8</b>	
16:52	11 MOSLEY I assist (2)			
16:26				44 MILLER A 3pt FG , jump shot missed
16:26				12 WILLIAMS K offensive rebound (1)
16:26	24 BROWN K foul personal (1 - 1)			12 WILLIAMS K foul drawn (1)
16:22				1 HAYES C 3pt FG second chance, jump shot missed
16:18				20 FOUNTAIN D offensive rebound (1)
16:18		<b>11-5</b>	<b>6</b>	20 FOUNTAIN D 2pt FG second chance in the paint, layup made (2)
16:13	5 HODGE D 3pt FG , jump shot missed			
16:11				12 WILLIAMS K defensive rebound (2)
16:05				44 MILLER A 3pt FG , jump shot missed
16:03	24 BROWN K defensive rebound (1)			
15:57	35 CARTER N 3pt FG , jump shot missed			
15:54				44 MILLER A defensive rebound (1)
15:45				3 HILL J 3pt FG , jump shot missed
15:41				12 WILLIAMS K offensive rebound (3)
15:41		<b>11-7</b>	<b>4</b>	12 WILLIAMS K 2pt FG second chance in the paint, layup made (2)
15:23	11 MOSLEY I 3pt FG , jump shot missed			
15:23	offensive rebound (4)			
15:23	Timeout media			
15:23				1 HAYES C substitution out
15:23				0 HANNIBAL T substitution in
15:23	11 MOSLEY I substitution out			
15:23	4 GHOLSTON D substitution in			



**LSU at Missouri**

02/01/23 Mizzou Arena, Columbia  
2022-23 Men's Basketball

**Game Time:** 8:00 PM  
**Game Duration:** 2:04  
**Attendance:** 12,769

**Officials:** Don Daily, Steven Anderson, Olandis Poole

Game Time	Mizzou	Score	Diff	LSU
15:14	35 CARTER N 3pt FG second chance, jump shot made (9)	<b>14-7</b>	<b>7</b>	
15:14	24 BROWN K assist (1)			
15:14				44 MILLER A 3pt FG , jump shot missed
15:14				12 WILLIAMS K offensive rebound (4)
15:14				12 WILLIAMS K 2pt FG second chance in the paint, jump shot missed
15:14	35 CARTER N defensive rebound (2)			
15:14	35 CARTER N 3pt FG , jump shot missed			
15:14				20 FOUNTAIN D defensive rebound (2)
14:12		<b>14-9</b>	<b>5</b>	12 WILLIAMS K 2pt FG in the paint, layup made (4)
14:12				0 HANNIBAL T assist (1)
13:54	24 BROWN K 3pt FG , jump shot made (6)	<b>17-9</b>	<b>8</b>	
13:54	35 CARTER N assist (3)			
13:22				3 HILL J 3pt FG , jump shot missed
13:22	defensive rebound (6)			
13:22	5 HODGE D substitution out			
13:22	35 CARTER N substitution out			
13:22	23 SHAW A substitution in			
13:22	55 EAST II S substitution in			
13:22				20 FOUNTAIN D substitution out
13:22				13 REED J substitution in
13:08	24 BROWN K 3pt FG , jump shot missed			
13:05				0 HANNIBAL T defensive rebound (1)
13:00		<b>17-11</b>	<b>6</b>	0 HANNIBAL T 2pt FG fast break in the paint, layup made (2)
12:50	55 EAST II S 3pt FG , jump shot missed			
12:47				13 REED J defensive rebound (1)
12:47	23 SHAW A foul personal (1 - 2)			13 REED J foul drawn (1)
12:47	10 HONOR N substitution out			
12:47	11 MOSLEY I substitution in			
12:47				44 MILLER A substitution out
12:47				15 WARD T substitution in
12:31				15 WARD T 3pt FG , jump shot missed
12:29	23 SHAW A defensive rebound (1)			
12:22	4 GHOLSTON D 2pt FG outside the paint, jump shot made (2)	<b>19-11</b>	<b>8</b>	
12:13	23 SHAW A steal (1)			0 HANNIBAL T turnover lost ball (1)
12:02	11 MOSLEY I 3pt FG from turnover, jump shot made (3)	<b>22-11</b>	<b>11</b>	
12:02	23 SHAW A assist (1)			
11:40	55 EAST II S foul drawn (1)			15 WARD T foul offensive (1 - 3)
11:40				15 WARD T turnover offensive (1)
11:40	Timeout media			
11:40	24 BROWN K substitution out			
11:40	0 DIARRA M substitution in			
11:08	4 GHOLSTON D 3pt FG from turnover, jump shot made (5)	<b>25-11</b>	<b>14</b>	
10:48	4 GHOLSTON D foul shooting (1 - 3)			12 WILLIAMS K foul drawn (2)
10:48		<b>25-12</b>	<b>13</b>	12 WILLIAMS K free throw 1 - 2 made (5)
10:48	0 DIARRA M substitution out			
10:48	23 SHAW A substitution out			
10:48	24 BROWN K substitution in			
10:48	35 CARTER N substitution in			



**LSU at Missouri**

02/01/23 Mizzou Arena, Columbia  
2022-23 Men's Basketball

**Game Time:** 8:00 PM  
**Game Duration:** 2:04  
**Attendance:** 12,769

**Officials:** Don Daily, Steven Anderson, Olandis Poole

Game Time	Mizzou	Score	Diff	LSU
10:48				0 HANNIBAL T substitution out
10:48				44 MILLER A substitution in
10:48		<b>25-13</b>	<b>12</b>	12 WILLIAMS K free throw 2 - 2 made (6)
10:36	35 CARTER N foul drawn (2)			13 REED J foul shooting (1 - 4)
10:36	35 CARTER N free throw 1 - 2 missed			
10:36	offensive dead ball rebound (1)			
10:36	35 CARTER N free throw 2 - 2 made (10)	<b>26-13</b>	<b>13</b>	
10:15	4 GHOLSTON D foul shooting (2 - 4)			13 REED J foul drawn (2)
10:15				13 REED J free throw 1 - 2 missed
10:15				offensive dead ball rebound (1)
10:15				13 REED J free throw 2 - 2 missed
10:15	35 CARTER N defensive rebound (3)			
10:15	11 MOSLEY I 3pt FG , jump shot missed			
10:15				13 REED J defensive rebound (2)
10:15				15 WARD T 2pt FG in the paint, layup blocked
10:15	11 MOSLEY I block (1)			
10:15	55 EAST II S defensive rebound (1)			
10:10	4 GHOLSTON D foul drawn (1)			13 REED J foul personal (2 - 5)
10:05	4 GHOLSTON D substitution out			
10:05	1 BROWN K substitution in			
10:05				13 REED J substitution out
10:05				15 WARD T substitution out
10:05				1 HAYES C substitution in
10:05				20 FOUNTAIN D substitution in
09:34	11 MOSLEY I 2pt FG in the paint, jump shot made (5)	<b>28-13</b>	<b>15</b>	
09:34	55 EAST II S assist (1)			
09:34		<b>28-16</b>	<b>12</b>	3 HILL J 3pt FG , jump shot made (3)
09:34				1 HAYES C assist (1)
09:11	11 MOSLEY I 3pt FG , jump shot made (8)	<b>31-16</b>	<b>15</b>	
09:11	55 EAST II S assist (2)			
08:48				12 WILLIAMS K 3pt FG , jump shot missed
08:46	55 EAST II S defensive rebound (2)			
08:43	24 BROWN K 3pt FG fast break, jump shot made (9)	<b>34-16</b>	<b>18</b>	
08:43	55 EAST II S assist (3)			
08:41				Timeout 30 Sec
08:41				12 WILLIAMS K substitution out
08:41				34 PHILLIPS JR. S substitution in
08:33				3 HILL J 3pt FG , jump shot missed
08:30				20 FOUNTAIN D offensive rebound (3)
08:17	24 BROWN K steal (1)			44 MILLER A turnover bad pass (1)
07:56	35 CARTER N 2pt FG from turnover in the paint, layup missed			
07:53				20 FOUNTAIN D defensive rebound (4)
07:46				3 HILL J turnover bad pass (1)
07:46	Timeout media			
07:46	1 BROWN K substitution out			
07:46	5 HODGE D substitution in			
07:34	24 BROWN K foul drawn (1)			1 HAYES C foul personal (2 - 6)
07:34	35 CARTER N substitution out			
07:34	23 SHAW A substitution in			



**LSU at Missouri**

02/01/23 Mizzou Arena, Columbia  
2022-23 Men's Basketball

**Game Time:** 8:00 PM  
**Game Duration:** 2:04  
**Attendance:** 12,769

**Officials:** Don Daily, Steven Anderson, Olandis Poole

Game Time	Mizzou	Score	Diff	LSU
07:34				1 HAYES C substitution out
07:34				0 HANNIBAL T substitution in
07:21	5 HODGE D turnover bad pass (1)			20 FOUNTAIN D steal (1)
07:08		<b>34-19</b>	<b>15</b>	44 MILLER A 3pt FG from turnover, jump shot made (3)
07:08				3 HILL J assist (1)
06:39	11 MOSLEY I turnover lost ball (1)			44 MILLER A steal (1)
06:39				44 MILLER A turnover travel (2)
06:39	55 EAST II S substitution out			
06:39	10 HONOR N substitution in			
06:25	11 MOSLEY I turnover lost ball (2)			44 MILLER A steal (2)
06:18		<b>34-22</b>	<b>12</b>	3 HILL J 3pt FG fast break from turnover, jump shot made (6)
06:18				0 HANNIBAL T assist (2)
06:17	Timeout 30 Sec			
06:17	11 MOSLEY I substitution out			
06:17	23 SHAW A substitution out			
06:17	4 GHOLSTON D substitution in			
06:17	35 CARTER N substitution in			
05:47	35 CARTER N 3pt FG , jump shot missed			
05:45	24 BROWN K offensive rebound (2)			
05:44	4 GHOLSTON D 3pt FG second chance, jump shot missed			
05:42				defensive rebound (13)
05:42	24 BROWN K foul personal (2 - 5)			20 FOUNTAIN D foul drawn (1)
05:42	24 BROWN K substitution out			
05:42	0 DIARRA M substitution in			
05:09				44 MILLER A 3pt FG , jump shot missed
05:08				0 HANNIBAL T offensive rebound (2)
05:08	35 CARTER N foul shooting (1 - 6)			0 HANNIBAL T foul drawn (1)
05:08		<b>34-23</b>	<b>11</b>	0 HANNIBAL T free throw 1 - 2 made (3)
05:08	4 GHOLSTON D substitution out			
05:08	55 EAST II S substitution in			
05:08				0 HANNIBAL T free throw 2 - 2 missed
05:07	0 DIARRA M defensive rebound (1)			
04:54	10 HONOR N 3pt FG , jump shot missed			
04:53				defensive rebound (15)
04:53				34 PHILLIPS JR. S substitution out
04:53				12 WILLIAMS K substitution in
04:36				20 FOUNTAIN D 2pt FG in the paint, layup missed
04:32				20 FOUNTAIN D offensive rebound (5)
04:32				20 FOUNTAIN D 2pt FG second chance in the paint, layup missed
04:31	10 HONOR N defensive rebound (1)			
04:24	0 DIARRA M 3pt FG , jump shot missed			
04:22				12 WILLIAMS K defensive rebound (5)
04:16		<b>34-25</b>	<b>9</b>	3 HILL J 2pt FG fast break in the paint, layup made (8)
04:00	55 EAST II S 2pt FG in the paint, layup made (2)	<b>36-25</b>	<b>11</b>	
03:47	55 EAST II S foul personal (1 - 7)			44 MILLER A foul drawn (1)
03:47				Timeout media
03:47	35 CARTER N substitution out			
03:47	24 BROWN K substitution in			



**LSU at Missouri**

02/01/23 Mizzou Arena, Columbia  
2022-23 Men's Basketball

**Game Time:** 8:00 PM  
**Game Duration:** 2:04  
**Attendance:** 12,769

**Officials:** Don Daily, Steven Anderson, Olandis Poole

Game Time	Mizzou	Score	Diff	LSU
03:47				3 HILL J substitution out
03:47				20 FOUNTAIN D substitution out
03:47				15 WARD T substitution in
03:47				34 PHILLIPS JR. S substitution in
03:47		<b>36-26</b>	<b>10</b>	44 MILLER A 1&1 free throw 1 made (4)
03:47		<b>36-27</b>	<b>9</b>	44 MILLER A 1&1 free throw 2 made (5)
03:25	24 BROWN K 3pt FG , jump shot made (12)	<b>39-27</b>	<b>12</b>	
03:25	5 HODGE D assist (1)			
03:07		<b>39-30</b>	<b>9</b>	12 WILLIAMS K 3pt FG , jump shot made (9)
03:07				0 HANNIBAL T assist (3)
02:54	10 HONOR N foul drawn (1)			15 WARD T foul personal (2 - 7)
02:54	10 HONOR N 1&1 free throw 1 made (1)	<b>40-30</b>	<b>10</b>	
02:54	10 HONOR N 1&1 free throw 2 made (2)	<b>41-30</b>	<b>11</b>	
02:43	5 HODGE D steal (1)			0 HANNIBAL T turnover lost ball (2)
02:39	24 BROWN K 2pt FG fast break from turnover in the paint, dunk, made (14)	<b>43-30</b>	<b>13</b>	
02:39	5 HODGE D assist (2)			
02:27				15 WARD T 2pt FG outside the paint, jump shot missed
02:25	0 DIARRA M defensive rebound (2)			
02:18	55 EAST II S 2pt FG in the paint, jump shot missed			
02:15				34 PHILLIPS JR. S defensive rebound (1)
02:05		<b>43-33</b>	<b>10</b>	15 WARD T 3pt FG , jump shot made (3)
02:05				44 MILLER A assist (1)
01:51	24 BROWN K 3pt FG , jump shot made (17)	<b>46-33</b>	<b>13</b>	
01:51	0 DIARRA M assist (1)			
01:32	24 BROWN K foul drawn (2)			0 HANNIBAL T foul offensive (1 - 8)
01:32				0 HANNIBAL T turnover offensive (3)
01:32				0 HANNIBAL T substitution out
01:32				15 WARD T substitution out
01:32				1 HAYES C substitution in
01:32				3 HILL J substitution in
01:18	55 EAST II S turnover bad pass (1)			3 HILL J steal (1)
01:13		<b>46-35</b>	<b>11</b>	1 HAYES C 2pt FG fast break from turnover in the paint, layup made (5)
01:13				3 HILL J assist (2)
00:46	0 DIARRA M 2pt FG in the paint, layup made (2)	<b>48-35</b>	<b>13</b>	
00:34				12 WILLIAMS K 3pt FG , jump shot missed
00:30	0 DIARRA M defensive rebound (3)			
00:21	55 EAST II S 3pt FG , jump shot missed			
00:18				34 PHILLIPS JR. S defensive rebound (2)
00:00				3 HILL J 3pt FG , jump shot missed
00:00				offensive dead ball rebound (2)
<b>END OF PERIOD</b>				
<b>Mizzou 48-35 LSU</b>				



LSU at Missouri

02/01/23 Mizzou Arena, Columbia  
2022-23 Men's Basketball

Game Time: 8:00 PM  
Game Duration: 2:04  
Attendance: 12,769

Officials: Don Daily, Steven Anderson, Olandis Poole

LSU - 35

NO.	Name	Min	FG			Rebounds			Fouls		TP	AS	TO	ST	Blocks		+/-
			M-A	3P	FT	OR	DR	TOT	PF	FD					BS	BA	
12	KJ Williams	F 16:12	3-6	1-3	2-2	3	2	5	0	2	9	0	0	0	0	0	-20
20	Derek Fountain	F 12:56	1-4	0-0	0-0	3	2	5	1	1	2	0	0	1	0	0	-6
1	Cam Hayes	G 08:40	2-3	1-2	0-0	0	0	0	2	0	5	1	0	0	0	0	-9
11	Justice Williams	G 02:15	0-0	0-0	0-0	0	0	0	0	0	0	0	0	0	0	0	-8
44	Adam Miller	G 18:01	1-5	1-5	2-2	0	1	1	0	1	5	1	2	2	0	0	-6
3	Justice Hill	15:30	3-7	2-6	0-0	0	0	0	0	0	8	2	1	1	0	0	-3
0	Trae Hannibal	10:37	1-1	0-0	1-2	1	1	2	1	1	3	3	3	0	0	0	-4
13	Jalen Reed	03:17	0-0	0-0	0-2	0	2	2	2	2	0	0	0	0	0	0	-5
15	Tyrell Ward	04:57	1-4	1-2	0-0	0	0	0	2	0	3	0	1	0	0	1	-9
34	Shawn Phillips Jr.	07:35	0-0	0-0	0-0	0	2	2	0	0	0	0	0	0	0	0	5
Team						0	2	2			0		1				
<b>Totals</b>			12-30	6-18	5-8	7	12	19	8	7	35	7	8	4	0	1	-13

Shooting By Period		
1st FG%	12-30	40.0%
3PT%	6-18	33.3%
FT%	5-8	62.5%
GM FG%	12-30	40.0%
3PT%	6-18	33.3%
FT%	5-8	62.5%

Dead Ball Rebounds: 2, 0

Technical Fouls::NONE

Missouri - 48

NO.	Name	Min	FG			Rebounds			Fouls		TP	AS	TO	ST	Blocks		+/-
			M-A	3P	FT	OR	DR	TOT	PF	FD					BS	BA	
24	Kobe Brown	F 17:13	6-7	5-6	0-0	1	1	2	2	2	17	1	0	1	0	0	12
35	Noah Carter	F 12:22	3-7	3-6	1-2	1	2	3	1	2	10	3	0	0	0	0	12
5	D'Moi Hodge	G 14:24	1-2	0-1	0-0	0	0	0	0	0	2	2	1	1	0	0	3
10	Nick Honor	G 13:52	0-1	0-1	2-2	0	1	1	0	1	2	0	0	0	0	0	4
11	Isiah Mosley	G 11:07	3-6	2-4	0-0	0	1	1	0	1	8	2	2	0	1	0	10
4	DeAndre Gholston	06:27	2-3	1-2	0-0	0	0	0	2	1	5	0	0	0	0	0	8
23	Aidan Shaw	03:51	0-0	0-0	0-0	0	1	1	1	0	0	1	0	1	0	0	-1
55	Sean East II	11:51	1-4	0-2	0-0	0	2	2	1	1	2	3	1	0	0	0	9
0	Mohamed Diarra	06:34	1-2	0-1	0-0	0	3	3	0	0	2	1	0	0	0	0	3
1	Kaleb Brown	02:19	0-0	0-0	0-0	0	0	0	0	0	0	0	0	0	0	0	5
Team						1	1	2			0		0				
<b>Totals</b>			17-32	11-23	3-4	3	12	15	7	8	48	13	4	3	1	0	13

Shooting By Period		
1st FG%	17-32	53.1%
3PT%	11-23	47.8%
FT%	3-4	75%
GM FG%	17-32	53.1%
3PT%	11-23	47.8%
FT%	3-4	75.0%

Dead Ball Rebounds: 1, 0

Technical Fouls::NONE

	LSU	Mizzou	Points from		Period by Period Scoring			
Biggest lead	0 (1 <sup>st</sup> 20:00)	18 (1 <sup>st</sup> 8:43)	Turnovers	8	11			
Best Scoring Run	9(1 <sup>st</sup> 4:16)	8(1 <sup>st</sup> 17:46)	Paint	12	10			
Lead Changes	0		Second Chance	5	5			
Times Tied	0		Fast Breaks	9	5			
Time with Lead	00:00	19:23	Bench	14	9			
					LSU	35	42	77
					Mizzou	48	39	87



**LSU at Missouri**

02/01/23 Mizzou Arena, Columbia  
2022-23 Men's Basketball

**Game Time:** 8:00 PM  
**Game Duration:** 2:04  
**Attendance:** 12,769

**Officials:** Don Daily, Steven Anderson, Olandis Poole

**Period 2**

**Quarter Starters:**

<b>Mizzou</b>	5 Hodge D	10 Honor N	11 Mosley I	24 Brown K	35 Carter N
<b>LSU</b>	1 Hayes C	3 Hill J	12 Williams K	20 Fountain D	44 Miller A

Game Time	Mizzou	Score	Diff	LSU
20:00				34 PHILLIPS JR. S substitution out
20:00				20 FOUNTAIN D substitution in
20:00	0 DIARRA M substitution out			
20:00	55 EAST II S substitution out			
20:00	11 MOSLEY I substitution in			
20:00	35 CARTER N substitution in			
19:43				3 HILL J 3pt FG , jump shot missed
19:39	24 BROWN K defensive rebound (3)			
19:13	5 HODGE D 2pt FG in the paint, jump shot missed			
19:10	11 MOSLEY I offensive rebound (2)			
19:09	11 MOSLEY I 2pt FG second chance in the paint, jump shot made (10)	<b>50-35</b>	<b>15</b>	
18:43		<b>50-37</b>	<b>13</b>	1 HAYES C 2pt FG in the paint, jump shot made (7)
18:16	11 MOSLEY I 2pt FG in the paint, jump shot missed			
18:14				20 FOUNTAIN D defensive rebound (6)
18:08				44 MILLER A 3pt FG , jump shot missed
18:06	24 BROWN K defensive rebound (4)			
18:04	35 CARTER N 2pt FG fast break outside the paint, jump shot made (12)	<b>52-37</b>	<b>15</b>	
18:04	24 BROWN K assist (2)			
17:41				20 FOUNTAIN D 3pt FG , jump shot missed
17:41				offensive rebound (21)
17:35		<b>52-40</b>	<b>12</b>	1 HAYES C 3pt FG second chance, jump shot made (10)
17:35				12 WILLIAMS K assist (1)
17:19	10 HONOR N foul drawn (2)			1 HAYES C foul personal (3 - 1)
17:01	11 MOSLEY I 2pt FG in the paint, layup missed			
16:58				12 WILLIAMS K defensive rebound (6)
16:57	10 HONOR N steal (1)			44 MILLER A turnover lost ball (3)
16:51	24 BROWN K 2pt FG fast break from turnover in the paint, layup made (19)	<b>54-40</b>	<b>14</b>	
16:51	11 MOSLEY I assist (3)			
16:51	24 BROWN K foul drawn (3)			12 WILLIAMS K foul shooting (1 - 2)
16:51	24 BROWN K free throw fast break 1 - 1 made (20)	<b>55-40</b>	<b>15</b>	
16:22				1 HAYES C 2pt FG in the paint, jump shot missed
16:20				20 FOUNTAIN D offensive rebound (7)
16:17				20 FOUNTAIN D 2pt FG second chance in the paint, layup missed
16:15				3 HILL J offensive rebound (1)
16:14		<b>55-43</b>	<b>12</b>	44 MILLER A 3pt FG second chance, jump shot made (8)
16:14				1 HAYES C assist (2)
15:50	5 HODGE D 2pt FG in the paint, layup made (4)	<b>57-43</b>	<b>14</b>	
15:50	24 BROWN K assist (3)			
15:41		<b>57-45</b>	<b>12</b>	20 FOUNTAIN D 2pt FG in the paint, dunk, made (4)
15:41				3 HILL J assist (3)





**LSU at Missouri**

02/01/23 Mizzou Arena, Columbia  
2022-23 Men's Basketball

**Game Time:** 8:00 PM  
**Game Duration:** 2:04  
**Attendance:** 12,769

**Officials:** Don Daily, Steven Anderson, Olandis Poole

Game Time	Mizzou	Score	Diff	LSU
15:21	24 BROWN K 2pt FG in the paint, layup made (22)	<b>59-45</b>	<b>14</b>	
15:06				12 WILLIAMS K 2pt FG in the paint, layup missed
15:03	5 HODGE D defensive rebound (1)			
15:01	11 MOSLEY I 2pt FG fast break in the paint, dunk, made (12)	<b>61-45</b>	<b>16</b>	
15:01	5 HODGE D assist (3)			
14:59				Timeout 30 Sec
14:59	11 MOSLEY I substitution out			
14:59	4 GHOLSTON D substitution in			
14:59				1 HAYES C substitution out
14:59				12 WILLIAMS K substitution out
14:59				15 WARD T substitution in
14:59				34 PHILLIPS JR. S substitution in
14:53				20 FOUNTAIN D 2pt FG outside the paint, jump shot missed
14:51				20 FOUNTAIN D offensive rebound (8)
14:50		<b>61-47</b>	<b>14</b>	20 FOUNTAIN D 2pt FG second chance in the paint, layup made (6)
14:37	24 BROWN K 2pt FG in the paint, layup made (24)	<b>63-47</b>	<b>16</b>	
14:37	10 HONOR N assist (1)			
14:14	10 HONOR N foul drawn (3)			44 MILLER A foul offensive (1 - 3)
14:14				44 MILLER A turnover offensive (4)
14:14				20 FOUNTAIN D substitution out
14:14				0 HANNIBAL T substitution in
13:58	24 BROWN K foul drawn (4)			15 WARD T foul personal (3 - 4)
13:46	4 GHOLSTON D turnover bad pass (1)			34 PHILLIPS JR. S steal (1)
13:39	10 HONOR N foul personal (1 - 1)			3 HILL J foul drawn (1)
13:35		<b>63-50</b>	<b>13</b>	15 WARD T 3pt FG from turnover, jump shot made (6)
13:35				34 PHILLIPS JR. S assist (1)
13:14	10 HONOR N 2pt FG in the paint, jump shot made (4)	<b>65-50</b>	<b>15</b>	
13:14	35 CARTER N assist (4)			
12:39		<b>65-52</b>	<b>13</b>	0 HANNIBAL T 2pt FG in the paint, jump shot made (5)
12:29	10 HONOR N 2pt FG in the paint, layup made (6)	<b>67-52</b>	<b>15</b>	
12:29	35 CARTER N substitution out			
12:29	23 SHAW A substitution in			
12:09				3 HILL J 2pt FG in the paint, layup blocked
12:09	24 BROWN K block (1)			
12:05	5 HODGE D defensive rebound (2)			
12:05	10 HONOR N foul drawn (4)			15 WARD T foul personal (4 - 5)
12:05				15 WARD T substitution out
12:05				20 FOUNTAIN D substitution in
12:01	4 GHOLSTON D foul drawn (2)			20 FOUNTAIN D foul personal (2 - 6)
12:01	10 HONOR N substitution out			
12:01	55 EAST II S substitution in			
12:01				34 PHILLIPS JR. S substitution out
12:01				12 WILLIAMS K substitution in
11:47	4 GHOLSTON D 3pt FG , jump shot made (8)	<b>70-52</b>	<b>18</b>	
11:47	55 EAST II S assist (4)			
11:36	24 BROWN K foul shooting (3 - 2)			0 HANNIBAL T foul drawn (2)
11:36				Timeout media
11:36		<b>70-53</b>	<b>17</b>	0 HANNIBAL T free throw 1 - 2 made (6)



**LSU at Missouri**

02/01/23 Mizzou Arena, Columbia  
2022-23 Men's Basketball

**Game Time:** 8:00 PM  
**Game Duration:** 2:04  
**Attendance:** 12,769

**Officials:** Don Daily, Steven Anderson, Olandis Poole

Game Time	Mizzou	Score	Diff	LSU
11:36		<b>70-54</b>	<b>16</b>	0 HANNIBAL T free throw 2 - 2 made (7)
11:30	5 HODGE D 3pt FG , jump shot missed			
11:30				defensive rebound (26)
11:11		<b>70-56</b>	<b>14</b>	0 HANNIBAL T 2pt FG in the paint, dunk, made (9)
10:50	4 GHOLSTON D 3pt FG , jump shot made (11)	<b>73-56</b>	<b>17</b>	
10:50	55 EAST II S assist (5)			
10:25	5 HODGE D foul personal (1 - 3)			0 HANNIBAL T foul drawn (3)
10:25				44 MILLER A substitution out
10:25				1 HAYES C substitution in
10:04				3 HILL J 3pt FG , jump shot missed
10:04				offensive rebound (27)
10:04	24 BROWN K substitution out			
10:04	0 DIARRA M substitution in			
10:00	23 SHAW A foul shooting (2 - 4)			20 FOUNTAIN D foul drawn (2)
10:00		<b>73-57</b>	<b>16</b>	20 FOUNTAIN D free throw 1 - 2 made (7)
09:58				20 FOUNTAIN D free throw 2 - 2 missed
09:57	0 DIARRA M defensive rebound (4)			
09:48	5 HODGE D 2pt FG in the paint, layup made (6)	<b>75-57</b>	<b>18</b>	
09:48	4 GHOLSTON D assist (1)			
09:33		<b>75-59</b>	<b>16</b>	20 FOUNTAIN D 2pt FG in the paint, layup made (9)
09:33				0 HANNIBAL T assist (4)
09:33	5 HODGE D foul shooting (2 - 5)			20 FOUNTAIN D foul drawn (3)
09:33	0 DIARRA M substitution out			
09:33	23 SHAW A substitution out			
09:33	24 BROWN K substitution in			
09:33	35 CARTER N substitution in			
09:33				20 FOUNTAIN D free throw 1 - 1 missed
09:31	24 BROWN K defensive rebound (5)			
09:13	4 GHOLSTON D 2pt FG outside the paint, jump shot missed			
09:10				0 HANNIBAL T defensive rebound (3)
09:03		<b>75-62</b>	<b>13</b>	3 HILL J 3pt FG , jump shot made (11)
09:03				0 HANNIBAL T assist (5)
08:46	35 CARTER N 2pt FG in the paint, layup made (14)	<b>77-62</b>	<b>15</b>	
08:46	24 BROWN K assist (4)			
08:11				20 FOUNTAIN D 2pt FG in the paint, layup missed
08:08				12 WILLIAMS K offensive rebound (7)
08:08		<b>77-64</b>	<b>13</b>	12 WILLIAMS K 2pt FG second chance in the paint, layup made (11)
07:45	4 GHOLSTON D 3pt FG , jump shot missed			
07:42				12 WILLIAMS K defensive rebound (8)
07:40				3 HILL J 3pt FG , jump shot missed
07:36				20 FOUNTAIN D offensive rebound (9)
07:34		<b>77-66</b>	<b>11</b>	20 FOUNTAIN D 2pt FG second chance in the paint, layup made (11)
07:30	35 CARTER N turnover out of bounds (1)			
07:29	Timeout media			
07:29	5 HODGE D substitution out			
07:29	11 MOSLEY I substitution in			
07:29				0 HANNIBAL T substitution out
07:29				44 MILLER A substitution in



**LSU at Missouri**

02/01/23 Mizzou Arena, Columbia  
2022-23 Men's Basketball

**Game Time:** 8:00 PM  
**Game Duration:** 2:04  
**Attendance:** 12,769

**Officials:** Don Daily, Steven Anderson, Olandis Poole

Game Time	Mizzou	Score	Diff	LSU
07:14				44 MILLER A 3pt FG from turnover, jump shot missed
07:14				offensive rebound (32)
07:14	35 CARTER N substitution out			
07:14	0 DIARRA M substitution in			
07:05				44 MILLER A 3pt FG from turnover second chance, jump shot missed
07:01	0 DIARRA M defensive rebound (5)			
06:46	24 BROWN K 2pt FG in the paint, layup made (26)	<b>79-66</b>	<b>13</b>	
06:46	55 EAST II S assist (6)			
06:22				3 HILL J 3pt FG , jump shot missed
06:21	0 DIARRA M defensive rebound (6)			
06:21	0 DIARRA M foul drawn (1)			12 WILLIAMS K foul personal (2 - 7)
06:20	0 DIARRA M 1&1 free throw 1 missed			
06:19				20 FOUNTAIN D defensive rebound (10)
06:04		<b>79-68</b>	<b>11</b>	12 WILLIAMS K 2pt FG in the paint, layup made (13)
06:04				1 HAYES C assist (3)
05:39	11 MOSLEY I 2pt FG in the paint, layup blocked			
05:39				12 WILLIAMS K block (1)
05:35				12 WILLIAMS K defensive rebound (9)
05:32				44 MILLER A 3pt FG , jump shot missed
05:28	0 DIARRA M defensive rebound (7)			
05:07	4 GHOLSTON D 2pt FG in the paint, layup missed			
05:05	0 DIARRA M offensive rebound (8)			
05:04	0 DIARRA M 2pt FG second chance in the paint, layup blocked			
05:04				12 WILLIAMS K block (2)
04:59				12 WILLIAMS K defensive rebound (10)
04:58	55 EAST II S steal (1)			3 HILL J turnover bad pass (2)
04:43	4 GHOLSTON D foul drawn (3)			1 HAYES C foul personal (4 - 8)
04:43	55 EAST II S substitution out			
04:43	10 HONOR N substitution in			
04:43				1 HAYES C substitution out
04:43				0 HANNIBAL T substitution in
04:43	4 GHOLSTON D 1&1 free throw 1 made (12)	<b>80-68</b>	<b>12</b>	
04:43	4 GHOLSTON D 1&1 free throw 2 made (13)	<b>81-68</b>	<b>13</b>	
04:43	4 GHOLSTON D substitution out			
04:43	5 HODGE D substitution in			
04:16				0 HANNIBAL T 2pt FG in the paint, layup missed
04:14	24 BROWN K defensive rebound (6)			
03:49	11 MOSLEY I 2pt FG in the paint, layup missed			
03:46				20 FOUNTAIN D defensive rebound (11)
03:39				3 HILL J 2pt FG in the paint, layup missed
03:37	24 BROWN K defensive rebound (7)			
03:11	10 HONOR N 2pt FG in the paint, layup missed			
03:09				12 WILLIAMS K defensive rebound (11)
03:07	jump ball situation			
03:07	24 BROWN K steal (2)			3 HILL J turnover lost ball (3)
03:07	Timeout media			
02:59	0 DIARRA M foul drawn (2)			12 WILLIAMS K foul shooting (3 - 9)
02:59	0 DIARRA M free throw 1 - 2 missed			



**LSU at Missouri**

02/01/23 Mizzou Arena, Columbia  
2022-23 Men's Basketball

**Game Time:** 8:00 PM  
**Game Duration:** 2:04  
**Attendance:** 12,769

**Officials:** Don Daily, Steven Anderson, Olandis Poole

Game Time	Mizzou	Score	Diff	LSU
02:59	offensive dead ball rebound (2)			
02:59	0 DIARRA M free throw 2 - 2 made (3)	<b>82-68</b>	<b>14</b>	
02:41	0 DIARRA M foul shooting (1 - 6)			0 HANNIBAL T foul drawn (4)
02:41		<b>82-69</b>	<b>13</b>	0 HANNIBAL T free throw 1 - 2 made (10)
02:41	11 MOSLEY I substitution out			
02:41	4 GHOLSTON D substitution in			
02:41		<b>82-70</b>	<b>12</b>	0 HANNIBAL T free throw 2 - 2 made (11)
02:38	4 GHOLSTON D foul drawn (4)			20 FOUNTAIN D foul personal (3 - 10)
02:38	4 GHOLSTON D free throw 1 - 2 made (14)	<b>83-70</b>	<b>13</b>	
02:37	4 GHOLSTON D free throw 2 - 2 missed			
02:35				3 HILL J defensive rebound (2)
02:19				3 HILL J 2pt FG in the paint, jump shot missed
02:16	4 GHOLSTON D defensive rebound (1)			
01:49	0 DIARRA M 2pt FG in the paint, layup made (5)	<b>85-70</b>	<b>15</b>	
01:49	10 HONOR N assist (2)			
01:33		<b>85-72</b>	<b>13</b>	12 WILLIAMS K 2pt FG in the paint, jump shot made (15)
01:33				3 HILL J assist (4)
01:31				Timeout 60 Sec
01:31	Timeout 30 Sec			
01:31	0 DIARRA M substitution out			
01:31	35 CARTER N substitution in			
01:31				44 MILLER A substitution out
01:31				1 HAYES C substitution in
01:19	turnover 10 sec back court (7)			
01:19	35 CARTER N substitution out			
01:19	0 DIARRA M substitution in			
01:08				0 HANNIBAL T 2pt FG from turnover in the paint, layup blocked
01:08	0 DIARRA M block (1)			
01:04	0 DIARRA M defensive rebound (9)			
01:02	5 HODGE D 2pt FG fast break in the paint, dunk, made (8)	<b>87-72</b>	<b>15</b>	
01:02	24 BROWN K assist (5)			
00:49	10 HONOR N foul shooting (2 - 7)			3 HILL J foul drawn (2)
00:49		<b>87-73</b>	<b>14</b>	3 HILL J free throw 1 - 2 made (12)
00:49	0 DIARRA M substitution out			
00:49	4 GHOLSTON D substitution out			
00:49	5 HODGE D substitution out			
00:49	11 MOSLEY I substitution in			
00:49	35 CARTER N substitution in			
00:49	55 EAST II S substitution in			
00:49		<b>87-74</b>	<b>13</b>	3 HILL J free throw 2 - 2 made (13)
00:47	Timeout 30 Sec			
00:47	35 CARTER N turnover bad pass (2)			
00:47	11 MOSLEY I substitution out			
00:47	35 CARTER N substitution out			
00:47	0 DIARRA M substitution in			
00:47	5 HODGE D substitution in			
00:47				0 HANNIBAL T substitution out
00:47				44 MILLER A substitution in
00:41				44 MILLER A 2pt FG from turnover in the paint, layup blocked



Official Basketball Play by Play - Second Half

### LSU at Missouri

02/01/23 Mizzou Arena, Columbia  
2022-23 Men's Basketball

Game Time: 8:00 PM

Game Duration: 2:04

Attendance: 12,769

Officials: Don Daily, Steven Anderson, Olandis Poole

Game Time	Mizzou	Score	Diff	LSU
00:41	5 HODGE D block (1)			
00:35	24 BROWN K defensive rebound (8)			
00:34	24 BROWN K turnover bad pass (1)			44 MILLER A steal (3)
00:29				1 HAYES C 3pt FG from turnover, jump shot missed
00:26	0 DIARRA M defensive rebound (10)			
00:20	24 BROWN K turnover bad pass (2)			44 MILLER A steal (4)
00:16		87-77	10	44 MILLER A 3pt FG fast break from turnover, jump shot made (11)
<b>END OF GAME</b>				
<b>Mizzou 87-77 LSU</b>				



**LSU at Missouri**

02/01/23 Mizzou Arena, Columbia  
2022-23 Men's Basketball

Game Time: 8:00 PM  
Game Duration: 2:04  
Attendance: 12,769

Officials: Don Daily, Steven Anderson, Olandis Poole

LSU - 42

NO.	Name	Min	FG			Rebounds			Fouls		TP	AS	TO	ST	Blocks		+/-
			M-A	3P	FT	OR	DR	TOT	PF	FD					BS	BA	
12	KJ Williams	F 17:02	3-4	0-0	0-0	1	5	6	3	0	6	1	0	0	2	0	2
20	Derek Fountain	F 17:51	4-8	0-1	1-3	3	3	6	2	2	9	0	0	0	0	0	2
1	Cam Hayes	G 12:14	2-4	1-2	0-0	0	0	0	2	0	5	2	0	0	0	0	6
11	Justice Williams	G 00:00	0-0	0-0	0-0	0	0	0	0	0	0	0	0	0	0	0	0
44	Adam Miller	G 16:20	2-7	2-6	0-0	0	0	0	1	0	6	0	2	2	0	1	-3
3	Justice Hill	20:00	1-8	1-5	2-2	1	1	2	0	2	5	2	2	0	0	1	3
15	Tyrell Ward	02:54	1-1	1-1	0-0	0	0	0	2	0	3	0	0	0	0	0	1
34	Shawn Phillips Jr.	02:58	0-0	0-0	0-0	0	0	0	0	0	0	1	0	1	0	0	1
0	Trae Hannibal	10:41	2-4	0-0	4-4	0	1	1	0	3	8	2	0	0	0	1	3
Team						3	1	4			0		0				
<b>Totals</b>			15-36	5-15	7-9	8	11	19	10	7	42	8	4	3	2	3	3

Shooting By Period		
2 <sup>nd</sup> FG%	15-36	41.7%
3PT%	5-15	33.3%
FT%	7-9	77.8%
GM FG%	15-36	41.7%
3PT%	5-15	33.3%
FT%	7-9	77.8%

Dead Ball Rebounds: 0, 0

Technical Fouls::NONE

Missouri - 39

NO.	Name	Min	FG			Rebounds			Fouls		TP	AS	TO	ST	Blocks		+/-
			M-A	3P	FT	OR	DR	TOT	PF	FD					BS	BA	
24	Kobe Brown	F 19:29	4-4	0-0	1-1	0	6	6	1	2	9	4	2	1	1	0	-2
35	Noah Carter	F 10:05	2-2	0-0	0-0	0	0	0	0	0	4	1	2	0	0	0	-4
5	D'Moi Hodge	G 17:11	3-5	0-1	0-0	0	2	2	2	0	6	1	0	0	1	0	-4
10	Nick Honor	G 12:42	2-3	0-0	0-0	0	0	0	2	3	4	2	0	1	0	0	1
11	Isiah Mosley	G 09:52	2-6	0-0	0-0	1	0	1	0	0	4	1	0	0	0	1	4
4	DeAndre Gholston	12:07	2-5	2-3	3-4	0	1	1	0	3	9	1	1	0	0	0	-2
23	Aidan Shaw	02:56	0-0	0-0	0-0	0	0	0	1	0	0	0	0	0	0	0	1
55	Sean East II	08:08	0-0	0-0	0-0	0	0	0	0	0	0	3	0	1	0	0	-8
0	Mohamed Diarra	07:30	1-2	0-0	1-3	1	6	7	1	2	3	0	0	0	1	1	-1
Team						0	0	0			0		1				
<b>Totals</b>			16-27	2-4	5-8	2	15	17	7	10	39	13	6	3	3	2	-3

Shooting By Period		
2 <sup>nd</sup> FG%	16-27	59.3%
3PT%	2-4	50.0%
FT%	5-8	62.5%
GM FG%	16-27	59.3%
3PT%	2-4	50.0%
FT%	5-8	62.5%

Dead Ball Rebounds: 1, 0

Technical Fouls::NONE

	LSU	Mizzou
Biggest lead	0 (1 <sup>st</sup> 20:00)	18 (2 <sup>nd</sup> 11:47)
Best Scoring Run	5(2 <sup>nd</sup> 9:03)	5(2 <sup>nd</sup> 11:47)
Lead Changes	0	
Times Tied	0	
Time with Lead	00:00	19:43

Points from	LSU	Mizzou
Turnovers	6	6
Paint	20	26
Second Chance	13	2
Fast Breaks	3	9
Bench	16	12

	Period by Period Scoring		
	1st	2nd	TOT
LSU	35	42	77
Mizzou	48	39	87



**LSU at Missouri**

02/01/23 Mizzou Arena, Columbia  
2022-23 Men's Basketball

**Game Time:** 8:00 PM  
**Game Duration:** 2:04  
**Attendance:** 12,769

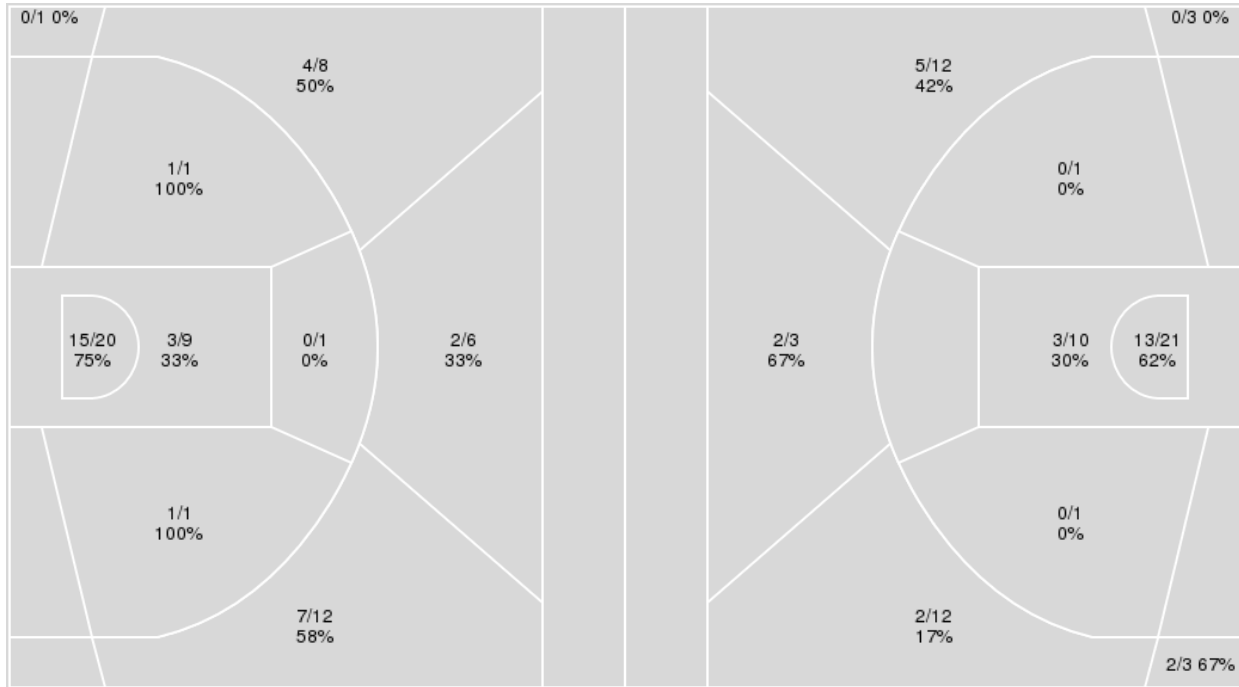
**Officials:** Don Daily, Steven Anderson, Olandis Poole

{ Players => All; } FG Types => All; Results => All;

{ Players => 0, 1, 2, 3, 4, 5, 10, 11, 12, 13, 15, 20, 21, 25, 30, 34, 44; }  
FG Types => All; Results => All;

**Missouri**

**LSU**



Missouri	M/A	%
Field Goals	33/59	56
2 Points	20/32	62
3 Points	13/27	48
Free Throws	8/12	67

LSU	M/A	%
Field Goals	27/66	41
2 Points	16/33	48
3 Points	11/33	33
Free Throws	12/17	71



**LSU at Missouri**

02/01/23 Mizzou Arena, Columbia  
2022-23 Men's Basketball

Game Time: 8:00 PM  
Game Duration: 2:04  
Attendance: 12,769

Officials: Don Daily, Steven Anderson, Olandis Poole

**LSU**

No	Name	Mins		Score		Points Diff		Points per Min		Assists		Rebounds		Steals		Turnovers	
		On	Off	On	Off	On	Off	On	Off	On	Off	On	Off	On	Off	On	Off
0	Trae Hannibal	21:18	18:42	47 - 48	30 - 39	-1	-9	2.21	1.60	9	6	19	19	4	3	6	6
1	Cam Hayes	20:54	19:06	39 - 42	38 - 45	-3	-7	1.87	1.99	8	7	22	16	3	4	5	7
3	Justice Hill	35:30	04:30	69 - 69	8 - 18	0	-10	1.94	1.78	13	2	37	1	7	0	9	3
11	Justice Williams	02:15	37:45	0 - 8	77 - 79	-8	-2	0.00	2.04	0	15	0	38	0	7	1	11
12	KJ Williams	33:14	06:46	63 - 81	14 - 6	-18	8	1.90	2.07	12	3	32	6	3	4	8	4
13	Jalen Reed	03:17	36:43	4 - 9	73 - 78	-5	-5	1.22	1.99	0	15	3	35	0	7	2	10
15	Tyrell Ward	07:51	32:09	17 - 25	60 - 62	-8	-2	2.17	1.87	3	12	3	35	1	6	5	7
20	Derek Fountain	30:47	09:13	58 - 62	19 - 25	-4	-6	1.88	2.06	11	4	33	5	5	2	8	4
34	Shawn Phillips Jr.	10:33	29:27	24 - 18	53 - 69	6	-16	2.27	1.80	6	9	8	30	5	2	6	6
44	Adam Miller	34:21	05:39	64 - 73	13 - 14	-9	-1	1.86	2.30	13	2	33	5	7	0	10	2

**Missouri**

No	Name	Mins		Score		Points Diff		Points per Min		Assists		Rebounds		Steals		Turnovers	
		On	Off	On	Off	On	Off	On	Off	On	Off	On	Off	On	Off	On	Off
0	Mohamed Diarra	14:04	25:56	29 - 27	58 - 50	2	8	2.06	2.24	7	19	15	17	3	3	3	7
1	Kaleb Brown	02:19	37:41	8 - 3	79 - 74	5	5	3.45	2.10	3	23	1	31	1	5	0	10
4	DeAndre Gholston	18:34	21:26	40 - 34	47 - 43	6	4	2.15	2.19	12	14	15	17	2	4	3	7
5	D'Moi Hodge	31:35	08:25	66 - 67	21 - 10	-1	11	2.09	2.50	21	5	24	8	3	3	9	1
10	Nick Honor	26:34	13:26	58 - 53	29 - 24	5	5	2.18	2.16	17	9	22	10	3	3	7	3
11	Isiah Mosley	20:59	19:01	46 - 32	41 - 45	14	-4	2.19	2.16	13	13	18	14	5	1	4	6
23	Aidan Shaw	06:47	33:13	16 - 16	71 - 61	0	10	2.36	2.14	4	22	3	29	1	5	3	7
24	Kobe Brown	36:42	03:18	80 - 70	7 - 7	10	0	2.18	2.12	25	1	29	3	6	0	10	0
35	Noah Carter	22:27	17:33	49 - 41	38 - 36	8	2	2.18	2.17	16	10	17	15	2	4	4	6
55	Sean East II	19:59	20:01	43 - 42	44 - 35	1	9	2.15	2.20	12	14	16	16	4	2	7	3





**LSU at Missouri**

02/01/23 Mizzou Arena, Columbia  
2022-23 Men's Basketball

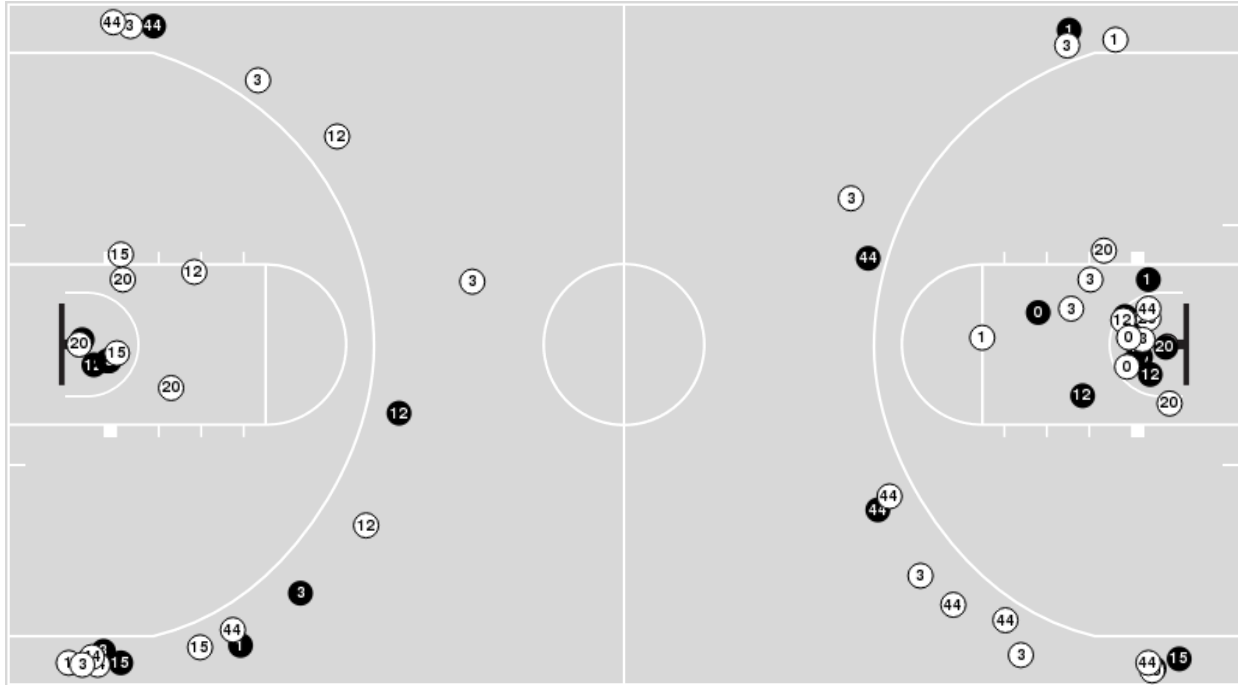
**Game Time:** 8:00 PM  
**Game Duration:** 2:04  
**Attendance:** 12,769

**Officials:** Don Daily, Steven Anderson, Olandis Poole

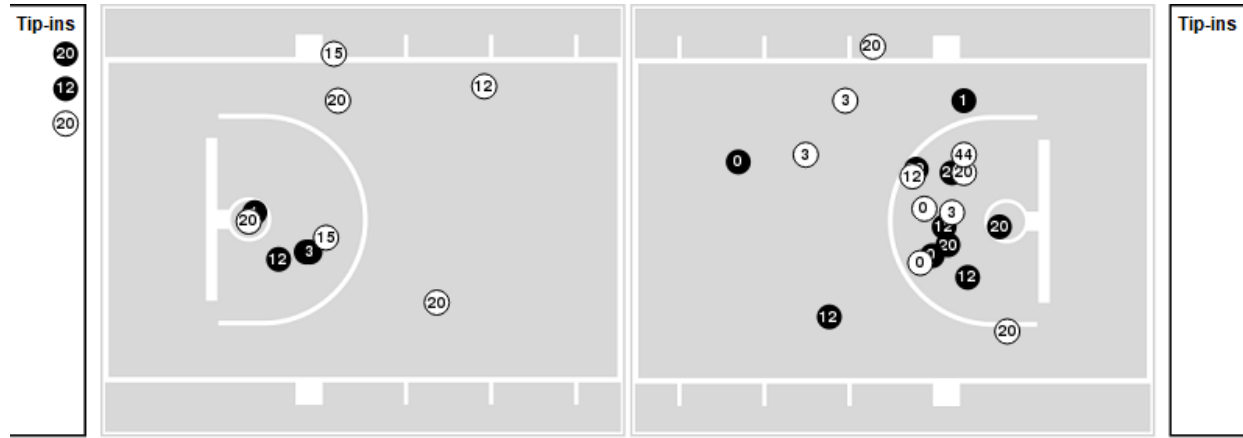
Players => 0, 1, 2, 3, 4, 5, 10, 11, 12, 13, 15, 20, 21, 25, 30, 34, 44 FG Types=>AllResults=>All

**LSU**

**All Field Goals**



**Blow Up Chart**



● Made ○ Missed N - Player Number

LSU	M/A	%
Field Goals	27/66	41
2 Points	16/33	48
3 Points	11/33	33
Free Throws	12/17	71

LSU	M/A	%
Points in the Paint	32 (16 / 31)	52
Fast Break Points	12 (5/5)	100
Second Chance Points	18 (9/16)	56
Effective FG%	49	



**LSU at Missouri**

02/01/23 Mizzou Arena, Columbia  
2022-23 Men's Basketball

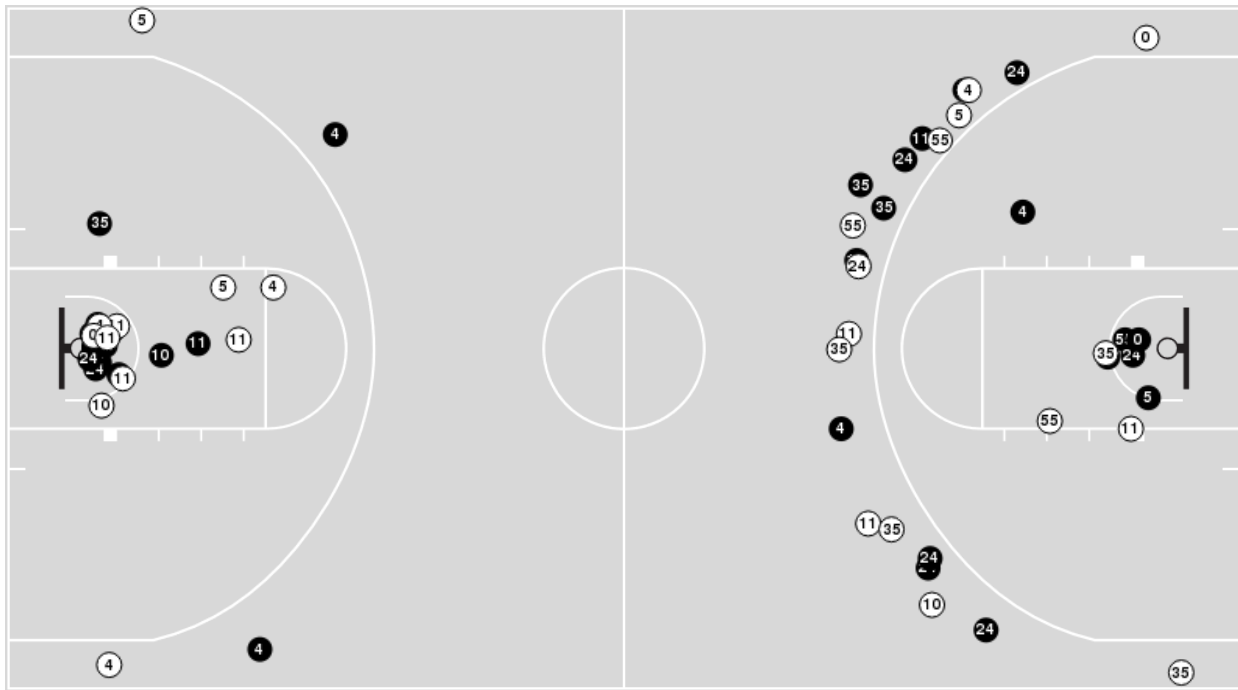
Game Time: 8:00 PM  
Game Duration: 2:04  
Attendance: 12,769

Officials: Don Daily, Steven Anderson, Olandis Poole

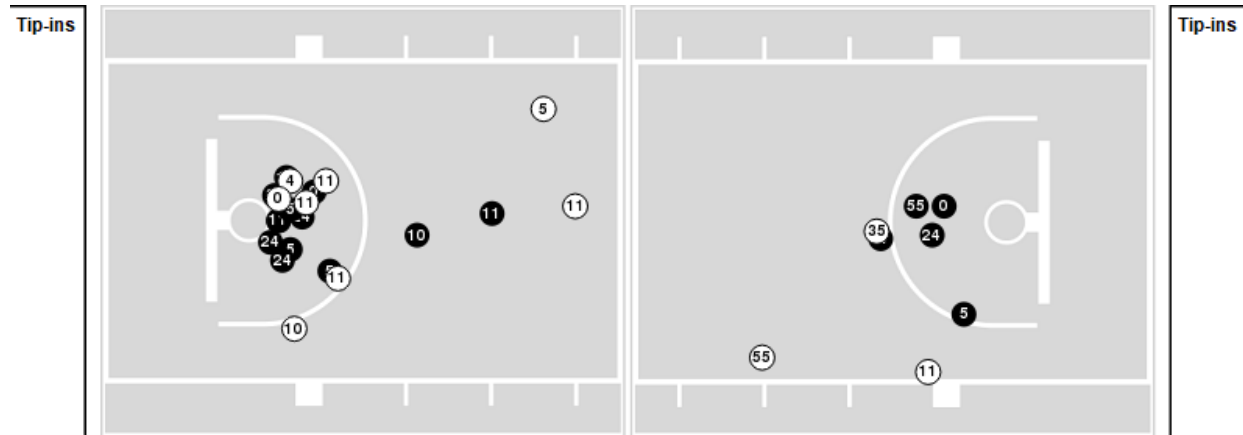
Players => AllFG Types=>AllResults=>All

**Missouri**

**All Field Goals**



**Blow Up Chart**



● Made ○ Missed N - Player Number

Missouri	M/A	%
Field Goals	33/59	56
2 Points	20/32	62
3 Points	13/27	48
Free Throws	8/12	67

Missouri	M/A	%
Points in the Paint	36 (18 / 29)	62
Fast Break Points	14 (7/7)	100
Second Chance Points	7 (3/5)	60
Effective FG%	67	



**LSU at Missouri**

02/01/23 Mizzou Arena, Columbia  
2022-23 Men's Basketball

**Game Time:** 8:00 PM  
**Game Duration:** 2:04  
**Attendance:** 12,769

**Officials:** Don Daily, Steven Anderson, Olandis Poole

**LSU**

Lineup	Quarter On	Time On	Quarter Off	Time Off	Time on Court	Score	Score Diff	Reb	Stl	Tov	Ass	PPP
1- Hayes C/ 11- Williams J/ 12- Williams K/ 20- Fountain D/ 44- Miller A/	1	20:00	1	17:45	02:15	0-8	-8	0	0	1	0	0.0000
1- Hayes C/ 3- Hill J/ 12- Williams K/ 20- Fountain D/ 44- Miller A/	1	17:45	1	15:23	02:22	7-3	4	5	0	0	0	1.7500
0- Hannibal T/ 3- Hill J/ 12- Williams K/ 20- Fountain D/ 44- Miller A/	1	15:23	1	13:22	02:01	2-6	-4	2	0	0	1	0.6667
0- Hannibal T/ 3- Hill J/ 12- Williams K/ 13- Reed J/ 44- Miller A/	1	13:22	1	12:47	00:35	2-0	2	2	0	0	0	2.0000
0- Hannibal T/ 3- Hill J/ 12- Williams K/ 13- Reed J/ 15- Ward T/	1	12:47	1	10:48	01:59	1-8	-7	0	0	2	0	0.2907
3- Hill J/ 12- Williams K/ 13- Reed J/ 15- Ward T/ 44- Miller A/	1	10:48	1	10:05	00:43	1-1	0	1	0	0	0	0.4310
1- Hayes C/ 3- Hill J/ 12- Williams K/ 20- Fountain D/ 44- Miller A/	1	10:05	1	08:41	01:24	3-8	-5	0	0	0	1	1.5000
1- Hayes C/ 3- Hill J/ 20- Fountain D/ 34- Phillips Jr. S/ 44- Miller A/	1	08:41	1	07:34	01:07	0-0	0	2	0	2	0	0.0000
0- Hannibal T/ 3- Hill J/ 20- Fountain D/ 34- Phillips Jr. S/ 44- Miller A/	1	07:34	1	04:53	02:41	7-0	7	3	3	1	2	1.8041
0- Hannibal T/ 3- Hill J/ 12- Williams K/ 20- Fountain D/ 44- Miller A/	1	04:53	1	03:47	01:06	2-2	0	2	0	0	0	1.0000
0- Hannibal T/ 12- Williams K/ 15- Ward T/ 34- Phillips Jr. S/ 44- Miller A/	1	03:47	1	01:32	02:15	8-10	-2	1	0	2	2	1.3605
1- Hayes C/ 3- Hill J/ 12- Williams K/ 34- Phillips Jr. S/ 44- Miller A/	1	01:32	2	20:00	01:32	2-2	0	1	1	0	1	0.6667
1- Hayes C/ 3- Hill J/ 12- Williams K/ 20- Fountain D/ 44- Miller A/	2	20:00	2	14:59	05:01	10-13	-3	5	0	1	3	1.2500
3- Hill J/ 15- Ward T/ 20- Fountain D/ 34- Phillips Jr. S/ 44- Miller A/	2	14:59	2	14:14	00:45	2-2	0	1	0	1	0	1.0000
0- Hannibal T/ 3- Hill J/ 15- Ward T/ 34- Phillips Jr. S/ 44- Miller A/	2	14:14	2	12:05	02:09	5-4	1	0	1	0	1	1.6667
0- Hannibal T/ 3- Hill J/ 20- Fountain D/ 34- Phillips Jr. S/ 44- Miller A/	2	12:05	2	12:01	00:04	0-0	0	0	0	0	0	0.0000
0- Hannibal T/ 3- Hill J/ 12- Williams K/ 20- Fountain D/ 44- Miller A/	2	12:01	2	10:25	01:36	4-6	-2	1	0	0	0	2.1277
0- Hannibal T/ 1- Hayes C/ 3- Hill J/ 12- Williams K/ 20- Fountain D/	2	10:25	2	07:29	02:56	10-4	6	5	0	0	2	1.8797
1- Hayes C/ 3- Hill J/ 12- Williams K/ 20- Fountain D/ 44- Miller A/	2	07:29	2	04:43	02:46	2-2	0	4	0	1	1	0.4000
0- Hannibal T/ 3- Hill J/ 12- Williams K/ 20- Fountain D/ 44- Miller A/	2	04:43	2	01:31	03:12	4-6	-2	3	0	1	1	0.6803
0- Hannibal T/ 1- Hayes C/ 3- Hill J/ 12- Williams K/ 20- Fountain D/	2	01:31	2	00:47	00:44	2-2	0	0	0	0	0	1.0638
1- Hayes C/ 3- Hill J/ 12- Williams K/ 20- Fountain D/ 44- Miller A/	2	00:47	2	00:00	00:47	3-0	3	0	2	0	0	1.0000



**LSU at Missouri**

02/01/23 Mizzou Arena, Columbia  
2022-23 Men's Basketball

**Game Time:** 8:00 PM  
**Game Duration:** 2:04  
**Attendance:** 12,769

**Officials:** Don Daily, Steven Anderson, Olandis Poole

**Missouri**

Lineup	Quarter On	Time On	Quarter Off	Time Off	Time on Court	Score	Score Diff	Reb	Stl	Tov	Ass	PPP
5- Hodge D/ 10- Honor N/ 11- Mosley I/ 24- Brown K/ 35- Carter N/	1	20:00	1	15:23	04:37	11-7	4	4	0	0	4	1.8333
4- Gholston D/ 5- Hodge D/ 10- Honor N/ 24- Brown K/ 35- Carter N/	1	15:23	1	13:22	02:01	6-2	4	2	0	0	2	2.0000
4- Gholston D/ 10- Honor N/ 23- Shaw A/ 24- Brown K/ 55- East II S/	1	13:22	1	12:47	00:35	0-2	-2	0	0	0	0	0.0000
4- Gholston D/ 11- Mosley I/ 23- Shaw A/ 24- Brown K/ 55- East II S/	1	12:47	1	11:40	01:07	5-0	5	1	1	0	1	2.5000
0- Diarra M/ 4- Gholston D/ 11- Mosley I/ 23- Shaw A/ 55- East II S/	1	11:40	1	10:48	00:52	3-1	2	0	0	0	0	3.0000
4- Gholston D/ 11- Mosley I/ 24- Brown K/ 35- Carter N/ 55- East II S/	1	10:48	1	10:05	00:43	1-1	0	2	0	0	0	0.5319
1- Brown K/ 11- Mosley I/ 24- Brown K/ 35- Carter N/ 55- East II S/	1	10:05	1	07:46	02:19	8-3	5	1	1	0	3	2.0000
5- Hodge D/ 11- Mosley I/ 24- Brown K/ 35- Carter N/ 55- East II S/	1	07:46	1	07:34	00:12	0-0	0	0	0	0	0	0.0000
5- Hodge D/ 11- Mosley I/ 23- Shaw A/ 24- Brown K/ 55- East II S/	1	07:34	1	06:39	00:55	0-3	-3	0	0	2	0	0.0000
5- Hodge D/ 10- Honor N/ 11- Mosley I/ 23- Shaw A/ 24- Brown K/	1	06:39	1	06:17	00:22	0-3	-3	0	0	1	0	0.0000
4- Gholston D/ 5- Hodge D/ 10- Honor N/ 24- Brown K/ 35- Carter N/	1	06:17	1	05:42	00:35	0-0	0	1	0	0	0	0.0000
0- Diarra M/ 4- Gholston D/ 5- Hodge D/ 10- Honor N/ 35- Carter N/	1	05:42	1	05:08	00:34	0-1	-1	0	0	0	0	0.0000
0- Diarra M/ 5- Hodge D/ 10- Honor N/ 35- Carter N/ 55- East II S/	1	05:08	1	03:47	01:21	2-2	0	2	0	0	0	0.6667
0- Diarra M/ 5- Hodge D/ 10- Honor N/ 24- Brown K/ 55- East II S/	1	03:47	2	20:00	03:47	12-10	2	2	1	1	3	1.5228
5- Hodge D/ 10- Honor N/ 11- Mosley I/ 24- Brown K/ 35- Carter N/	2	20:00	2	14:59	05:01	13-10	3	4	1	0	4	1.5403
4- Gholston D/ 5- Hodge D/ 10- Honor N/ 24- Brown K/ 35- Carter N/	2	14:59	2	12:29	02:30	6-7	-1	0	0	1	2	1.5000
4- Gholston D/ 5- Hodge D/ 10- Honor N/ 23- Shaw A/ 24- Brown K/	2	12:29	2	12:01	00:28	0-0	0	1	0	0	0	0.0000
4- Gholston D/ 5- Hodge D/ 23- Shaw A/ 24- Brown K/ 55- East II S/	2	12:01	2	10:04	01:57	6-4	2	0	0	0	2	2.0000
0- Diarra M/ 4- Gholston D/ 5- Hodge D/ 23- Shaw A/ 55- East II S/	2	10:04	2	09:33	00:31	2-3	-1	1	0	0	1	2.0000
4- Gholston D/ 5- Hodge D/ 24- Brown K/ 35- Carter N/ 55- East II S/	2	09:33	2	07:29	02:04	2-7	-5	1	0	1	1	0.5000
4- Gholston D/ 11- Mosley I/ 24- Brown K/ 35- Carter N/ 55- East II S/	2	07:29	2	07:14	00:15	0-0	0	0	0	0	0	0.0000
0- Diarra M/ 4- Gholston D/ 11- Mosley I/ 24- Brown K/ 55- East II S/	2	07:14	2	04:43	02:31	2-2	0	4	1	0	1	0.5814
0- Diarra M/ 4- Gholston D/ 10- Honor N/ 11- Mosley I/ 24- Brown K/	2	04:43	2	04:43	00:00	2-0	2	0	0	0	0	2.2727
0- Diarra M/ 5- Hodge D/ 10- Honor N/ 11- Mosley I/ 24- Brown K/	2	04:43	2	02:41	02:02	1-1	0	2	1	0	0	0.3472
0- Diarra M/ 4- Gholston D/ 5- Hodge D/ 10- Honor N/ 24- Brown K/	2	02:41	2	01:31	01:10	3-3	0	1	0	0	1	1.5957
4- Gholston D/ 5- Hodge D/ 10- Honor N/ 24- Brown K/ 35- Carter N/	2	01:31	2	01:19	00:12	0-0	0	0	0	1	0	0.0000
0- Diarra M/ 4- Gholston D/ 5- Hodge D/ 10- Honor N/ 24- Brown K/	2	01:19	2	00:49	00:29	2-1	1	1	0	0	1	2.0000
10- Honor N/ 11- Mosley I/ 24- Brown K/ 35- Carter N/ 55- East II S/	2	00:49	2	00:47	00:03	0-1	-1	0	0	1	0	0.0000
0- Diarra M/ 5- Hodge D/ 10- Honor N/ 24- Brown K/ 55- East II S/	2	00:47	2	00:00	00:47	0-3	-3	2	0	2	0	0.0000



**LSU at Missouri**

02/01/23 Mizzou Arena, Columbia  
2022-23 Men's Basketball

**Game Time:** 8:00 PM  
**Game Duration:** 2:04  
**Attendance:** 12,769

**Officials:** Don Daily, Steven Anderson, Olandis Poole

**LSU**

Lineup	Time	Score	Score Diff	Pts/Min	Reb	Stl	Tov	Ass	PPP
1- Hayes C/ 3- Hill J/ 12- Williams K/ 20- Fountain D/ 44- Miller A/	12:20	25-26	-1	2.0270	14	2	2	5	1.1364
0- Hannibal T/ 3- Hill J/ 12- Williams K/ 20- Fountain D/ 44- Miller A/	07:55	12-20	-8	1.5158	8	0	1	2	0.9404
0- Hannibal T/ 1- Hayes C/ 3- Hill J/ 12- Williams K/ 20- Fountain D/	03:40	12-6	6	3.2727	5	0	0	2	1.6667
0- Hannibal T/ 3- Hill J/ 20- Fountain D/ 34- Phillips Jr. S/ 44- Miller A/	02:45	7-0	7	2.5455	3	3	1	2	1.8041
1- Hayes C/ 11- Williams J/ 12- Williams K/ 20- Fountain D/ 44- Miller A/	02:15	0-8	-8	0.0000	0	0	1	0	0.0000
0- Hannibal T/ 12- Williams K/ 15- Ward T/ 34- Phillips Jr. S/ 44- Miller A/	02:15	8-10	-2	3.5556	1	0	2	2	1.3605
0- Hannibal T/ 3- Hill J/ 15- Ward T/ 34- Phillips Jr. S/ 44- Miller A/	02:09	5-4	1	2.3256	0	1	0	1	1.6667
0- Hannibal T/ 3- Hill J/ 12- Williams K/ 13- Reed J/ 15- Ward T/	01:59	1-8	-7	0.5042	0	0	2	0	0.2907
1- Hayes C/ 3- Hill J/ 12- Williams K/ 34- Phillips Jr. S/ 44- Miller A/	01:32	2-2	0	1.3043	1	1	0	1	0.6667
1- Hayes C/ 3- Hill J/ 20- Fountain D/ 34- Phillips Jr. S/ 44- Miller A/	01:07	0-0	0	0.0000	2	0	2	0	0.0000
3- Hill J/ 15- Ward T/ 20- Fountain D/ 34- Phillips Jr. S/ 44- Miller A/	00:45	2-2	0	2.6667	1	0	1	0	1.0000
3- Hill J/ 12- Williams K/ 13- Reed J/ 15- Ward T/ 44- Miller A/	00:43	1-1	0	1.3953	1	0	0	0	0.4310
0- Hannibal T/ 3- Hill J/ 12- Williams K/ 13- Reed J/ 44- Miller A/	00:35	2-0	2	3.4286	2	0	0	0	2.0000



**LSU at Missouri**

02/01/23 Mizzou Arena, Columbia  
2022-23 Men's Basketball

**Game Time:** 8:00 PM  
**Game Duration:** 2:04  
**Attendance:** 12,769

**Officials:** Don Daily, Steven Anderson, Olandis Poole

**Missouri**

Lineup	Time	Score	Score Diff	Pts/Min	Reb	Stl	Tov	Ass	PPP
5- Hodge D/ 10- Honor N/ 11- Mosley I/ 24- Brown K/ 35- Carter N/	09:38	24-17	7	2.4913	8	1	0	8	1.6620
4- Gholston D/ 5- Hodge D/ 10- Honor N/ 24- Brown K/ 35- Carter N/	05:18	12-9	3	2.2642	3	0	2	4	1.3333
0- Diarra M/ 5- Hodge D/ 10- Honor N/ 24- Brown K/ 55- East II S/	04:34	12-13	-1	2.6277	4	1	3	3	1.2146
0- Diarra M/ 4- Gholston D/ 11- Mosley I/ 24- Brown K/ 55- East II S/	02:31	2-2	0	0.7947	4	1	0	1	0.5814
1- Brown K/ 11- Mosley I/ 24- Brown K/ 35- Carter N/ 55- East II S/	02:19	8-3	5	3.4532	1	1	0	3	2.0000
4- Gholston D/ 5- Hodge D/ 24- Brown K/ 35- Carter N/ 55- East II S/	02:04	2-7	-5	0.9677	1	0	1	1	0.5000
0- Diarra M/ 5- Hodge D/ 10- Honor N/ 11- Mosley I/ 24- Brown K/	02:02	1-1	0	0.4918	2	1	0	0	0.3472
4- Gholston D/ 5- Hodge D/ 23- Shaw A/ 24- Brown K/ 55- East II S/	01:57	6-4	2	3.0769	0	0	0	2	2.0000
0- Diarra M/ 4- Gholston D/ 5- Hodge D/ 10- Honor N/ 24- Brown K/	01:39	5-4	1	3.0303	2	0	0	2	1.7361
0- Diarra M/ 5- Hodge D/ 10- Honor N/ 35- Carter N/ 55- East II S/	01:21	2-2	0	1.4815	2	0	0	0	0.6667
4- Gholston D/ 11- Mosley I/ 23- Shaw A/ 24- Brown K/ 55- East II S/	01:07	5-0	5	4.4776	1	1	0	1	2.5000
4- Gholston D/ 11- Mosley I/ 24- Brown K/ 35- Carter N/ 55- East II S/	00:58	1-1	0	1.0345	2	0	0	0	0.5319
5- Hodge D/ 11- Mosley I/ 23- Shaw A/ 24- Brown K/ 55- East II S/	00:55	0-3	-3	0.0000	0	0	2	0	0.0000
0- Diarra M/ 4- Gholston D/ 11- Mosley I/ 23- Shaw A/ 55- East II S/	00:52	3-1	2	3.4615	0	0	0	0	3.0000
4- Gholston D/ 10- Honor N/ 23- Shaw A/ 24- Brown K/ 55- East II S/	00:35	0-2	-2	0.0000	0	0	0	0	0.0000
0- Diarra M/ 4- Gholston D/ 5- Hodge D/ 10- Honor N/ 35- Carter N/	00:34	0-1	-1	0.0000	0	0	0	0	0.0000
0- Diarra M/ 4- Gholston D/ 5- Hodge D/ 23- Shaw A/ 55- East II S/	00:31	2-3	-1	3.8710	1	0	0	1	2.0000
4- Gholston D/ 5- Hodge D/ 10- Honor N/ 23- Shaw A/ 24- Brown K/	00:28	0-0	0	0.0000	1	0	0	0	0.0000
5- Hodge D/ 10- Honor N/ 11- Mosley I/ 23- Shaw A/ 24- Brown K/	00:22	0-3	-3	0.0000	0	0	1	0	0.0000
5- Hodge D/ 11- Mosley I/ 24- Brown K/ 35- Carter N/ 55- East II S/	00:12	0-0	0	0.0000	0	0	0	0	0.0000
10- Honor N/ 11- Mosley I/ 24- Brown K/ 35- Carter N/ 55- East II S/	00:03	0-1	-1	0.0000	0	0	1	0	0.0000
0- Diarra M/ 4- Gholston D/ 10- Honor N/ 11- Mosley I/ 24- Brown K/	00:00	2-0	2	∞	0	0	0	0	2.2727