



**Auburn at LSU**

01/18/23 Maravich Assembly Center, Baton Rouge  
2022-23 Men's Basketball

Game Time: 6:00 PM  
Game Duration: 1:58  
Attendance: 9,967

Officials: Doug Shows, Steven Anderson, Courtney Green

Auburn - 67

Record: 15-3 (5-1)

| NO.           | Name              | F | Min   | FG    |      |      | Rebounds |    |     | Fouls |    | TP | AS | TO | ST | Blocks |    | +/- |
|---------------|-------------------|---|-------|-------|------|------|----------|----|-----|-------|----|----|----|----|----|--------|----|-----|
|               |                   |   |       | M-A   | M-A  | M-A  | OR       | DR | TOT | PF    | FD |    |    |    |    | BS     | BA |     |
| 2             | Jaylin Williams   | F | 32:44 | 6-13  | 1-4  | 1-1  | 3        | 4  | 7   | 2     | 1  | 14 | 2  | 2  | 0  | 3      | 0  | 14  |
| 4             | Johni Broome      | F | 22:41 | 2-5   | 0-0  | 0-2  | 1        | 5  | 6   | 3     | 3  | 4  | 0  | 3  | 2  | 2      | 0  | 5   |
| 1             | Wendell Green Jr. | G | 29:12 | 5-14  | 1-6  | 3-3  | 0        | 4  | 4   | 0     | 3  | 14 | 4  | 0  | 2  | 0      | 2  | 13  |
| 12            | Zep Jasper        | G | 18:05 | 2-4   | 1-2  | 0-0  | 2        | 0  | 2   | 0     | 0  | 5  | 1  | 1  | 0  | 0      | 0  | 4   |
| 22            | Allen Flanigan    | G | 23:27 | 3-6   | 2-3  | 0-0  | 0        | 7  | 7   | 5     | 0  | 8  | 0  | 1  | 1  | 0      | 1  | 10  |
| 0             | K.D. Johnson      |   | 21:55 | 2-7   | 2-4  | 2-2  | 0        | 1  | 1   | 1     | 1  | 8  | 1  | 0  | 2  | 0      | 2  | 14  |
| 44            | Dylan Cardwell    |   | 17:19 | 2-3   | 0-1  | 0-2  | 3        | 4  | 7   | 3     | 2  | 4  | 2  | 0  | 0  | 2      | 0  | 13  |
| 21            | Yohan Traore      |   | 07:16 | 1-2   | 0-1  | 0-0  | 0        | 0  | 0   | 0     | 0  | 2  | 0  | 1  | 0  | 0      | 0  | 4   |
| 3             | Tre Donaldson     |   | 10:48 | 0-1   | 0-1  | 0-0  | 0        | 4  | 4   | 0     | 2  | 0  | 1  | 0  | 1  | 0      | 0  | 5   |
| 24            | Lior Berman       |   | 16:33 | 3-4   | 1-2  | 1-1  | 1        | 0  | 1   | 2     | 1  | 8  | 0  | 0  | 0  | 0      | 0  | 8   |
| Team          |                   |   |       |       |      |      | 1        | 1  | 2   |       |    | 0  |    | 2  |    |        |    |     |
| <b>Totals</b> |                   |   |       | 26-59 | 8-24 | 7-11 | 11       | 30 | 41  | 16    | 13 | 67 | 11 | 10 | 8  | 7      | 5  | 18  |

| Shooting By Period |       |       |
|--------------------|-------|-------|
| 1st FG%            | 12-25 | 48.0% |
| 3PT%               | 5-11  | 45.5% |
| FT%                | 3-7   | 42.9% |
| 2nd FG%            | 14-34 | 41.2% |
| 3PT%               | 3-13  | 23.1% |
| FT%                | 4-4   | 100%  |
| GM FG%             | 26-59 | 44.1% |
| 3PT%               | 8-24  | 33.3% |
| FT%                | 7-11  | 63.6% |

Dead Ball Rebounds: 2, 0

Technical Fouls::NONE

LSU - 49

Record: 12-6 (1-5)

| NO.           | Name               | F | Min   | FG    |      |       | Rebounds |    |     | Fouls |    | TP | AS | TO | ST | Blocks |    | +/- |
|---------------|--------------------|---|-------|-------|------|-------|----------|----|-----|-------|----|----|----|----|----|--------|----|-----|
|               |                    |   |       | M-A   | M-A  | M-A   | OR       | DR | TOT | PF    | FD |    |    |    |    | BS     | BA |     |
| 12            | KJ Williams        | F | 35:32 | 7-15  | 2-5  | 0-1   | 3        | 5  | 8   | 0     | 2  | 16 | 0  | 3  | 2  | 2      | 2  | -12 |
| 20            | Derek Fountain     | F | 25:47 | 1-6   | 0-1  | 0-0   | 4        | 1  | 5   | 2     | 1  | 2  | 0  | 2  | 1  | 1      | 2  | -17 |
| 1             | Cam Hayes          | G | 26:25 | 1-6   | 0-3  | 0-0   | 0        | 3  | 3   | 0     | 0  | 2  | 2  | 0  | 0  | 0      | 1  | -3  |
| 11            | Justice Williams   | G | 31:33 | 3-7   | 1-1  | 0-0   | 1        | 5  | 6   | 3     | 1  | 7  | 1  | 1  | 0  | 0      | 1  | -14 |
| 44            | Adam Miller        | G | 36:34 | 2-11  | 1-8  | 0-0   | 1        | 2  | 3   | 3     | 1  | 5  | 3  | 4  | 1  | 0      | 1  | -17 |
| 0             | Trae Hannibal      |   | 23:26 | 3-11  | 0-1  | 10-12 | 1        | 1  | 2   | 2     | 8  | 16 | 1  | 1  | 0  | 1      | 0  | -16 |
| 4             | Kendal Coleman     |   | 05:40 | 0-0   | 0-0  | 1-2   | 0        | 1  | 1   | 1     | 1  | 1  | 0  | 0  | 0  | 0      | 0  | -1  |
| 15            | Tyrell Ward        |   | 03:21 | 0-1   | 0-1  | 0-0   | 0        | 0  | 0   | 1     | 0  | 0  | 0  | 0  | 0  | 0      | 0  | -6  |
| 13            | Jalen Reed         |   | 08:46 | 0-1   | 0-0  | 0-2   | 1        | 4  | 5   | 1     | 2  | 0  | 0  | 0  | 1  | 1      | 0  | -1  |
| 34            | Shawn Phillips Jr. |   | 02:56 | 0-0   | 0-0  | 0-0   | 0        | 0  | 0   | 0     | 0  | 0  | 0  | 0  | 0  | 0      | 0  | -3  |
| Team          |                    |   |       |       |      |       | 3        | 2  | 5   |       |    | 0  |    | 0  |    |        |    |     |
| <b>Totals</b> |                    |   |       | 17-58 | 4-20 | 11-17 | 14       | 24 | 38  | 13    | 16 | 49 | 7  | 11 | 5  | 5      | 7  | -18 |

| Shooting By Period |       |       |
|--------------------|-------|-------|
| 1st FG%            | 7-27  | 25.9% |
| 3PT%               | 2-11  | 18.2% |
| FT%                | 5-7   | 71.4% |
| 2nd FG%            | 10-31 | 32.3% |
| 3PT%               | 2-9   | 22.2% |
| FT%                | 6-10  | 60%   |
| GM FG%             | 17-58 | 29.3% |
| 3PT%               | 4-20  | 20.0% |
| FT%                | 11-17 | 64.7% |

Dead Ball Rebounds: 3, 0

Technical Fouls::NONE

|                  | AUB                       | LSU                       |
|------------------|---------------------------|---------------------------|
| Biggest lead     | 19 (2 <sup>nd</sup> 6:44) | 0 (1 <sup>st</sup> 20:00) |
| Best Scoring Run | 12(1 <sup>st</sup> 2:29)  | 9(2 <sup>nd</sup> 15:50)  |
| Lead Changes     | 0                         |                           |
| Times Tied       | 0                         |                           |
| Time with Lead   | 39:47                     | 00:00                     |

| Points from   | AUB | LSU |
|---------------|-----|-----|
| Turnovers     | 15  | 2   |
| Paint         | 32  | 20  |
| Second Chance | 7   | 9   |
| Fast Breaks   | 5   | 3   |
| Bench         | 22  | 17  |

|     | Period by Period Scoring |     |     |
|-----|--------------------------|-----|-----|
|     | 1st                      | 2nd | TOT |
| AUB | 32                       | 35  | 67  |
| LSU | 21                       | 28  | 49  |



**Officials:** Doug Shows, Steven Anderson, Courtney Green

**Period 1**

**Quarter Starters:**

|            |               |               |               |               |               |
|------------|---------------|---------------|---------------|---------------|---------------|
| <b>LSU</b> | 1 Hayes C     | 11 Williams J | 12 Williams K | 20 Fountain D | 44 Miller A   |
| <b>AUB</b> | 1 Green Jr. W | 2 Williams J  | 4 Broome J    | 12 Jasper Z   | 22 Flanigan A |

| Game Time | LSU   | Score       | Diff      | AUB  |
|-----------|---|-------------|-----------|--|
| 20:00     | 20 FOUNTAIN D jumpball lost   |             |           | 4 BROOME J jumpball won                                    |
| 19:47     |   | <b>0-3</b>  | <b>-3</b> | 12 JASPER Z 3pt FG , jump shot made (3)                    |
| 19:47     |   |             |           | 2 WILLIAMS J assist (1)                                    |
| 19:27     | 20 FOUNTAIN D 3pt FG , jump shot missed                                       |             |           |  |
| 19:23     |   |             |           | 22 FLANIGAN A defensive rebound (1)                        |
| 19:05     |   |             |           | 12 JASPER Z 2pt FG in the paint, layup missed              |
| 19:03     |   |             |           | 12 JASPER Z offensive rebound (1)                          |
| 19:03     | jump ball situation   |             |           |  |
| 19:03     | 20 FOUNTAIN D steal (1)   |             |           | 12 JASPER Z turnover lost ball (1)                         |
| 18:41     | 12 WILLIAMS K 2pt FG from turnover in the paint, jump shot missed             |             |           |  |
| 18:37     | 20 FOUNTAIN D offensive rebound (1)   |             |           |  |
| 18:35     | 20 FOUNTAIN D 2pt FG from turnover second chance in the paint, layup missed   |             |           |  |
| 18:33     | 12 WILLIAMS K offensive rebound (1)   |             |           |  |
| 18:32     | 12 WILLIAMS K 2pt FG from turnover second chance in the paint, layup made (2) | <b>2-3</b>  | <b>-1</b> |  |
| 18:08     | 44 MILLER A foul personal (1 - 1)   |             |           | 4 BROOME J foul drawn (1)                                  |
| 17:52     | 11 WILLIAMS J foul personal (1 - 2)   |             |           | 1 GREEN JR. W foul drawn (1)                               |
| 17:39     | 20 FOUNTAIN D foul shooting (1 - 3)   |             |           | 4 BROOME J foul drawn (2)                                  |
| 17:39     |   |             |           | 4 BROOME J free throw 1 - 2 missed                         |
| 17:39     |   |             |           | offensive dead ball rebound (1)                            |
| 17:39     |   |             |           | 4 BROOME J free throw 2 - 2 missed                         |
| 17:38     | 44 MILLER A defensive rebound (1)   |             |           |  |
| 17:22     | 12 WILLIAMS K 2pt FG in the paint, layup blocked                              |             |           |  |
| 17:22     |   |             |           | 4 BROOME J block (1)                                       |
| 17:20     |   |             |           | 22 FLANIGAN A defensive rebound (2)                        |
| 17:14     |   | <b>2-6</b>  | <b>-4</b> | 2 WILLIAMS J 3pt FG fast break, jump shot made (3)         |
| 17:14     |   |             |           | 12 JASPER Z assist (1)                                     |
| 16:55     | 20 FOUNTAIN D 2pt FG in the paint, layup blocked                              |             |           |  |
| 16:55     |   |             |           | 2 WILLIAMS J block (1)                                     |
| 16:52     |   |             |           | 22 FLANIGAN A defensive rebound (3)                        |
| 16:45     |   | <b>2-8</b>  | <b>-6</b> | 1 GREEN JR. W 2pt FG outside the paint, jump shot made (2) |
| 16:23     | 12 WILLIAMS K 3pt FG , jump shot made (5)                                     | <b>5-8</b>  | <b>-3</b> |  |
| 16:23     | 44 MILLER A assist (1)  |             |           |  |
| 16:01     | 11 WILLIAMS J foul shooting (2 - 4)   |             |           | 1 GREEN JR. W foul drawn (2)                               |
| 16:01     |   | <b>5-9</b>  | <b>-4</b> | 1 GREEN JR. W free throw 1 - 3 made (3)                    |
| 16:01     |   | <b>5-10</b> | <b>-5</b> | 1 GREEN JR. W free throw 2 - 3 made (4)                    |
| 16:01     | 11 WILLIAMS J substitution out  |             |           |  |
| 16:01     | 0 HANNIBAL T substitution in  |             |           |  |
| 16:01     |   |             |           | 4 BROOME J substitution out                                |
| 16:01     |   |             |           | 12 JASPER Z substitution out                               |
| 16:01     |   |             |           | 0 JOHNSON K substitution in                                |
| 16:01     |   |             |           | 44 CARDWELL D substitution in                              |



**Auburn at LSU**

01/18/23 Maravich Assembly Center, Baton Rouge  
2022-23 Men's Basketball

**Game Time:** 6:00 PM  
**Game Duration:** 1:58  
**Attendance:** 9,967

**Officials:** Doug Shows, Steven Anderson, Courtney Green

| Game Time | LSU  | Score       | Diff      | AUB  |
|-----------|--|-------------|-----------|--|
| 16:01     |  | <b>5-11</b> | <b>-6</b> | 1 GREEN JR. W free throw 3 - 3 made (5)              |
| 15:47     | 12 WILLIAMS K 3pt FG , jump shot missed                |             |           |  |
| 15:43     |  |             |           | 22 FLANIGAN A defensive rebound (4)                  |
| 15:26     |  |             |           | 2 WILLIAMS J 2pt FG in the paint, jump shot missed   |
| 15:23     | 1 HAYES C defensive rebound (1)                        |             |           |  |
| 15:16     | 1 HAYES C 3pt FG , jump shot missed                    |             |           |  |
| 15:13     |  |             |           | 2 WILLIAMS J defensive rebound (1)                   |
| 14:46     |  |             |           | 2 WILLIAMS J 3pt FG , jump shot missed               |
| 14:43     |  |             |           | 44 CARDWELL D offensive rebound (1)                  |
| 14:41     | jump ball situation                                    |             |           |  |
| 14:41     | Timeout media  |             |           |  |
| 14:41     | 20 FOUNTAIN D substitution out                         |             |           |  |
| 14:41     | 4 COLEMAN K substitution in                            |             |           |  |
| 14:41     |  |             |           | 2 WILLIAMS J substitution out                        |
| 14:41     |  |             |           | 21 TRAORE Y substitution in                          |
| 14:22     |  |             |           | 1 GREEN JR. W 3pt FG second chance, jump shot missed |
| 14:20     | defensive rebound (5)                                  |             |           |  |
| 14:06     | 44 MILLER A 3pt FG , jump shot missed                  |             |           |  |
| 14:03     |  |             |           | 22 FLANIGAN A defensive rebound (5)                  |
| 13:34     |  |             |           | 0 JOHNSON K 3pt FG , jump shot missed                |
| 13:30     | 1 HAYES C defensive rebound (2)                        |             |           |  |
| 13:21     | 0 HANNIBAL T 2pt FG in the paint, layup missed         |             |           |  |
| 13:18     |  |             |           | 22 FLANIGAN A defensive rebound (6)                  |
| 12:59     | 4 COLEMAN K foul shooting (1 - 5)                      |             |           | 44 CARDWELL D foul drawn (1)                         |
| 12:59     |  |             |           | 44 CARDWELL D free throw 1 - 2 missed                |
| 12:59     |  |             |           | offensive dead ball rebound (2)                      |
| 12:59     | 1 HAYES C substitution out                             |             |           |  |
| 12:59     | 15 WARD T substitution in                              |             |           |  |
| 12:59     |  |             |           | 1 GREEN JR. W substitution out                       |
| 12:59     |  |             |           | 22 FLANIGAN A substitution out                       |
| 12:59     |  |             |           | 3 DONALDSON T substitution in                        |
| 12:59     |  |             |           | 24 BERMAN L substitution in                          |
| 12:59     |  |             |           | 44 CARDWELL D free throw 2 - 2 missed                |
| 12:56     | 12 WILLIAMS K defensive rebound (2)                    |             |           |  |
| 12:36     | 0 HANNIBAL T foul drawn (1)                            |             |           | 44 CARDWELL D foul personal (1 - 1)                  |
| 12:36     |  |             |           | 44 CARDWELL D substitution out                       |
| 12:36     |  |             |           | 4 BROOME J substitution in                           |
| 12:27     | 0 HANNIBAL T foul drawn (2)                            |             |           | 4 BROOME J foul shooting (1 - 2)                     |
| 12:27     | 0 HANNIBAL T free throw 1 - 2 missed                   |             |           |  |
| 12:27     | offensive dead ball rebound (1)                        |             |           |  |
| 12:27     | 12 WILLIAMS K substitution out                         |             |           |  |
| 12:27     | 13 REED J substitution in                              |             |           |  |
| 12:27     | 0 HANNIBAL T free throw 2 - 2 made (1)                 | <b>6-11</b> | <b>-5</b> |  |
| 12:02     |  | <b>6-14</b> | <b>-8</b> | 24 BERMAN L 3pt FG , jump shot made (3)              |
| 12:02     |  |             |           | 3 DONALDSON T assist (1)                             |
| 11:39     | 44 MILLER A 2pt FG outside the paint, jump shot missed |             |           |  |
| 11:35     |  |             |           | 4 BROOME J defensive rebound (1)                     |
| 11:31     | 15 WARD T foul personal (1 - 6)                        |             |           | 3 DONALDSON T foul drawn (1)                         |
| 11:31     | Timeout media  |             |           |  |



**Auburn at LSU**

01/18/23 Maravich Assembly Center, Baton Rouge  
2022-23 Men's Basketball

**Game Time:** 6:00 PM  
**Game Duration:** 1:58  
**Attendance:** 9,967

**Officials:** Doug Shows, Steven Anderson, Courtney Green

| Game Time | LSU  | Score        | Diff       | AUB  |
|-----------|--|--------------|------------|--|
| 11:31     | 4 COLEMAN K substitution out                               |              |            |  |
| 11:31     | 12 WILLIAMS K substitution in                              |              |            |  |
| 11:31     |  |              |            | 21 TRAORE Y substitution out                               |
| 11:31     |  |              |            | 2 WILLIAMS J substitution in                               |
| 11:26     |  | <b>6-16</b>  | <b>-10</b> | 24 BERMAN L 2pt FG in the paint, layup made (5)            |
| 11:26     |  |              |            | 2 WILLIAMS J assist (2)                                    |
| 11:12     | 15 WARD T substitution out                                 |              |            |  |
| 11:12     | 1 HAYES C substitution in                                  |              |            |  |
| 11:00     | 0 HANNIBAL T foul drawn (3)                                |              |            | 24 BERMAN L foul shooting (1 - 3)                          |
| 11:00     | 0 HANNIBAL T free throw 1 - 2 made (2)                     | <b>7-16</b>  | <b>-9</b>  |  |
| 11:00     | 0 HANNIBAL T free throw 2 - 2 made (3)                     | <b>8-16</b>  | <b>-8</b>  |  |
| 10:42     |  |              |            | 2 WILLIAMS J 2pt FG outside the paint, jump shot missed    |
| 10:39     |  |              |            | 4 BROOME J offensive rebound (2)                           |
| 10:38     | 12 WILLIAMS K steal (1)                                    |              |            | 4 BROOME J turnover lost ball (1)                          |
| 10:31     | 44 MILLER A 3pt FG from turnover, jump shot missed         |              |            |  |
| 10:27     |  |              |            | 0 JOHNSON K defensive rebound (1)                          |
| 10:23     |  |              |            | 0 JOHNSON K 2pt FG in the paint, layup blocked             |
| 10:23     | 12 WILLIAMS K block (1)                                    |              |            |  |
| 10:22     | defensive rebound (8)                                      |              |            |  |
| 10:22     | 0 HANNIBAL T substitution out                              |              |            |  |
| 10:22     | 11 WILLIAMS J substitution in                              |              |            |  |
| 10:01     | 12 WILLIAMS K 2pt FG outside the paint, jump shot missed   |              |            |  |
| 09:59     |  |              |            | 2 WILLIAMS J defensive rebound (2)                         |
| 09:36     |  |              |            | 4 BROOME J 2pt FG outside the paint, jump shot missed      |
| 09:31     | 11 WILLIAMS J defensive rebound (1)                        |              |            |  |
| 09:26     | 11 WILLIAMS J 2pt FG outside the paint, jump shot made (2) | <b>10-16</b> | <b>-6</b>  |  |
| 09:09     |  |              |            | 2 WILLIAMS J 2pt FG in the paint, jump shot missed         |
| 09:06     | 13 REED J defensive rebound (1)                            |              |            |  |
| 08:59     | 13 REED J 2pt FG in the paint, layup missed                |              |            |  |
| 08:56     |  |              |            | 3 DONALDSON T defensive rebound (1)                        |
| 08:51     |  |              |            | 2 WILLIAMS J turnover travel (1)                           |
| 08:51     | 13 REED J substitution out                                 |              |            |  |
| 08:51     | 20 FOUNTAIN D substitution in                              |              |            |  |
| 08:51     |  |              |            | 0 JOHNSON K substitution out                               |
| 08:51     |  |              |            | 3 DONALDSON T substitution out                             |
| 08:51     |  |              |            | 24 BERMAN L substitution out                               |
| 08:51     |  |              |            | 1 GREEN JR. W substitution in                              |
| 08:51     |  |              |            | 12 JASPER Z substitution in                                |
| 08:51     |  |              |            | 22 FLANIGAN A substitution in                              |
| 08:36     | 44 MILLER A 3pt FG from turnover, jump shot missed         |              |            |  |
| 08:33     |  |              |            | 4 BROOME J defensive rebound (3)                           |
| 08:04     |  |              |            | 2 WILLIAMS J 3pt FG , jump shot missed                     |
| 08:02     | 11 WILLIAMS J defensive rebound (2)                        |              |            |  |
| 08:02     | 11 WILLIAMS J foul drawn (1)                               |              |            | 4 BROOME J foul personal (2 - 4)                           |
| 08:02     |  |              |            | 4 BROOME J substitution out                                |
| 08:02     |  |              |            | 44 CARDWELL D substitution in                              |
| 07:48     | 12 WILLIAMS K 3pt FG , jump shot made (8)                  | <b>13-16</b> | <b>-3</b>  |  |
| 07:48     | 44 MILLER A assist (2)                                     |              |            |  |
| 07:30     |  | <b>13-18</b> | <b>-5</b>  | 1 GREEN JR. W 2pt FG outside the paint, jump shot made (7) |



**Auburn at LSU**

01/18/23 Maravich Assembly Center, Baton Rouge  
2022-23 Men's Basketball

**Game Time:** 6:00 PM  
**Game Duration:** 1:58  
**Attendance:** 9,967

**Officials:** Doug Shows, Steven Anderson, Courtney Green

| Game Time | LSU  | Score        | Diff       | AUB   |
|-----------|--|--------------|------------|---|
| 07:30     |  |              |            | 44 CARDWELL D assist (1)                                      |
| 07:22     | 44 MILLER A foul drawn (1)                                       |              |            | 2 WILLIAMS J foul personal (1 - 5)                            |
| 07:22     | Timeout media  |              |            |   |
| 07:07     | 12 WILLIAMS K 2pt FG in the paint, jump shot missed              |              |            |   |
| 07:04     |  |              |            | 1 GREEN JR. W defensive rebound (1)                           |
| 06:52     |  | <b>13-20</b> | <b>-7</b>  | 44 CARDWELL D 2pt FG in the paint, dunk, made (2)             |
| 06:52     |  |              |            | 1 GREEN JR. W assist (1)                                      |
| 06:32     | 44 MILLER A turnover bad pass (1)                                |              |            |   |
| 06:01     |  |              |            | turnover shot clock (4)                                       |
| 06:01     | 11 WILLIAMS J substitution out                                   |              |            |   |
| 06:01     | 0 HANNIBAL T substitution in                                     |              |            |   |
| 05:48     | 1 HAYES C 3pt FG from turnover, jump shot missed                 |              |            |   |
| 05:47     |  |              |            | defensive rebound (17)  |
| 05:47     |  |              |            | 44 CARDWELL D substitution out                                |
| 05:47     |  |              |            | 4 BROOME J substitution in                                    |
| 05:32     | 12 WILLIAMS K foul drawn (1)                                     |              |            | 22 FLANIGAN A foul offensive (1 - 6)                          |
| 05:32     |  |              |            | 22 FLANIGAN A turnover offensive (1)                          |
| 05:32     |  |              |            | 4 BROOME J substitution out                                   |
| 05:32     |  |              |            | 44 CARDWELL D substitution in                                 |
| 05:03     | 0 HANNIBAL T 2pt FG from turnover in the paint, jump shot missed |              |            |   |
| 05:00     | offensive rebound (12)   |              |            |   |
| 05:00     | 1 HAYES C substitution out                                       |              |            |   |
| 05:00     | 11 WILLIAMS J substitution in                                    |              |            |   |
| 05:00     |  |              |            | 1 GREEN JR. W substitution out                                |
| 05:00     |  |              |            | 3 DONALDSON T substitution in                                 |
| 04:51     | 44 MILLER A 3pt FG from turnover second chance, jump shot missed |              |            |   |
| 04:48     |  |              |            | 22 FLANIGAN A defensive rebound (7)                           |
| 04:27     |  | <b>13-23</b> | <b>-10</b> | 22 FLANIGAN A 3pt FG , jump shot made (3)                     |
| 04:05     | 20 FOUNTAIN D turnover travel (1)                                |              |            |   |
| 04:05     | 20 FOUNTAIN D substitution out                                   |              |            |   |
| 04:05     | 34 PHILLIPS JR. S substitution in                                |              |            |   |
| 04:05     |  |              |            | 3 DONALDSON T substitution out                                |
| 04:05     |  |              |            | 44 CARDWELL D substitution out                                |
| 04:05     |  |              |            | 1 GREEN JR. W substitution in                                 |
| 04:05     |  |              |            | 4 BROOME J substitution in                                    |
| 03:57     |  |              |            | 4 BROOME J turnover bad pass (2)                              |
| 03:57     | Timeout media  |              |            |   |
| 03:57     |  |              |            | 4 BROOME J substitution out                                   |
| 03:57     |  |              |            | 12 JASPER Z substitution out                                  |
| 03:57     |  |              |            | 0 JOHNSON K substitution in                                   |
| 03:57     |  |              |            | 44 CARDWELL D substitution in                                 |
| 03:39     | 44 MILLER A 3pt FG from turnover, jump shot missed               |              |            |   |
| 03:36     |  |              |            | 44 CARDWELL D defensive rebound (2)                           |
| 03:20     |  |              |            | 1 GREEN JR. W 3pt FG , jump shot missed                       |
| 03:15     |  |              |            | 2 WILLIAMS J offensive rebound (3)                            |
| 02:59     |  |              |            | 1 GREEN JR. W 2pt FG second chance in the paint, layup missed |
| 02:56     |  |              |            | 44 CARDWELL D offensive rebound (3)                           |



Official Basketball Play by Play - First Half

**Auburn at LSU**

01/18/23 Maravich Assembly Center, Baton Rouge  
2022-23 Men's Basketball

**Game Time:** 6:00 PM  
**Game Duration:** 1:58  
**Attendance:** 9,967

**Officials:** Doug Shows, Steven Anderson, Courtney Green

| Game Time            | LSU   | Score        | Diff       | AUB   |
|----------------------|---|--------------|------------|---|
| 02:56                |   | <b>13-25</b> | <b>-12</b> | 44 CARDWELL D 2pt FG second chance in the paint, dunk, made (4) |
| 02:42                | 11 WILLIAMS J 2pt FG in the paint, jump shot missed         |              |            |   |
| 02:40                | 11 WILLIAMS J offensive rebound (3)                         |              |            |   |
| 02:37                | 12 WILLIAMS K turnover lost ball (1)                        |              |            | 1 GREEN JR. W steal (1)   |
| 02:29                |   | <b>13-28</b> | <b>-15</b> | 0 JOHNSON K 3pt FG from turnover, jump shot made (3)            |
| 02:02                | 12 WILLIAMS K 2pt FG outside the paint, jump shot made (10) | <b>15-28</b> | <b>-13</b> |   |
| 02:02                | 0 HANNIBAL T assist (1)                                     |              |            |   |
| 01:28                |   | <b>15-30</b> | <b>-15</b> | 22 FLANIGAN A 2pt FG in the paint, layup made (5)               |
| 01:09                | 12 WILLIAMS K 2pt FG in the paint, layup made (12)          | <b>17-30</b> | <b>-13</b> |   |
| 01:09                | 12 WILLIAMS K foul drawn (2)                                |              |            | 2 WILLIAMS J foul shooting (2 - 7)                              |
| 01:09                | 11 WILLIAMS J substitution out                              |              |            |   |
| 01:09                | 34 PHILLIPS JR. S substitution out                          |              |            |   |
| 01:09                | 1 HAYES C substitution in                                   |              |            |   |
| 01:09                | 20 FOUNTAIN D substitution in                               |              |            |   |
| 01:09                |   |              |            | 44 CARDWELL D substitution out                                  |
| 01:09                |   |              |            | 4 BROOME J substitution in                                      |
| 01:09                | 12 WILLIAMS K free throw 1 - 1 missed                       |              |            |   |
| 01:07                |   |              |            | 2 WILLIAMS J defensive rebound (4)                              |
| 00:51                |   |              |            | 1 GREEN JR. W 3pt FG , jump shot missed                         |
| 00:47                | 0 HANNIBAL T defensive rebound (1)                          |              |            |   |
| 00:45                | 0 HANNIBAL T foul drawn (4)                                 |              |            | 22 FLANIGAN A foul shooting (2 - 8)                             |
| 00:45                | 0 HANNIBAL T free throw fast break 1 - 2 made (4)           | <b>18-30</b> | <b>-12</b> |   |
| 00:45                |   |              |            | 4 BROOME J substitution out                                     |
| 00:45                |   |              |            | 22 FLANIGAN A substitution out                                  |
| 00:45                |   |              |            | 24 BERMAN L substitution in                                     |
| 00:45                |   |              |            | 44 CARDWELL D substitution in                                   |
| 00:45                | 0 HANNIBAL T free throw fast break 2 - 2 made (5)           | <b>19-30</b> | <b>-11</b> |   |
| 00:27                |   | <b>19-32</b> | <b>-13</b> | 2 WILLIAMS J 2pt FG in the paint, dunk, made (5)                |
| 00:27                |   |              |            | 0 JOHNSON K assist (1)  |
| 00:01                | 0 HANNIBAL T 2pt FG in the paint, layup made (7)            | <b>21-32</b> | <b>-11</b> |   |
| <b>END OF PERIOD</b> |   |              |            |   |
| <b>LSU 21-32 AUB</b> |   |              |            |   |



**Auburn at LSU**

01/18/23 Maravich Assembly Center, Baton Rouge  
2022-23 Men's Basketball

Game Time: 6:00 PM  
Game Duration: 1:58  
Attendance: 9,967

Officials: Doug Shows, Steven Anderson, Courtney Green

**Auburn - 32**

| NO.           | Name              | Min     | FG    |      |     | Rebounds |    |     | Fouls |    | TP | AS | TO | ST | Blocks |    | +/- |
|---------------|-------------------|---------|-------|------|-----|----------|----|-----|-------|----|----|----|----|----|--------|----|-----|
|               |                   |         | M-A   | 3P   | FT  | OR       | DR | TOT | PF    | FD |    |    |    |    | BS     | BA |     |
| 2             | Jaylin Williams   | F 16:50 | 2-7   | 1-3  | 0-0 | 1        | 3  | 4   | 2     | 0  | 5  | 2  | 1  | 0  | 1      | 0  | 9   |
| 4             | Johni Broome      | F 09:20 | 0-1   | 0-0  | 0-2 | 1        | 2  | 3   | 2     | 2  | 0  | 0  | 2  | 0  | 1      | 0  | 4   |
| 1             | Wendell Green Jr. | G 14:57 | 2-6   | 0-3  | 3-3 | 0        | 1  | 1   | 0     | 2  | 7  | 1  | 0  | 1  | 0      | 0  | 8   |
| 12            | Zep Jasper        | G 08:53 | 1-2   | 1-1  | 0-0 | 1        | 0  | 1   | 0     | 0  | 3  | 1  | 1  | 0  | 0      | 0  | 9   |
| 22            | Allen Flanigan    | G 15:07 | 2-2   | 1-1  | 0-0 | 0        | 7  | 7   | 2     | 0  | 5  | 0  | 1  | 0  | 0      | 0  | 12  |
| 0             | K.D. Johnson      | 11:07   | 1-3   | 1-2  | 0-0 | 0        | 1  | 1   | 0     | 0  | 3  | 1  | 0  | 0  | 0      | 1  | 2   |
| 44            | Dylan Cardwell    | 10:40   | 2-2   | 0-0  | 0-2 | 2        | 1  | 3   | 1     | 1  | 4  | 1  | 0  | 0  | 0      | 0  | 7   |
| 21            | Yohan Traore      | 03:10   | 0-0   | 0-0  | 0-0 | 0        | 0  | 0   | 0     | 0  | 0  | 0  | 0  | 0  | 0      | 0  | 2   |
| 3             | Tre Donaldson     | 05:03   | 0-0   | 0-0  | 0-0 | 0        | 1  | 1   | 0     | 1  | 0  | 1  | 0  | 0  | 0      | 0  | 3   |
| 24            | Lior Berman       | 04:53   | 2-2   | 1-1  | 0-0 | 0        | 0  | 0   | 1     | 0  | 5  | 0  | 0  | 0  | 0      | 0  | -1  |
| Team          |                   |         |       |      |     | 0        | 1  | 1   |       |    | 0  |    | 1  |    |        |    |     |
| <b>Totals</b> |                   |         | 12-25 | 5-11 | 3-7 | 5        | 17 | 22  | 8     | 6  | 32 | 7  | 6  | 1  | 2      | 1  | 11  |

| Shooting By Period |       |       |
|--------------------|-------|-------|
| 1st FG%            | 12-25 | 48.0% |
| 3PT%               | 5-11  | 45.5% |
| FT%                | 3-7   | 42.9% |
| GM FG%             | 12-25 | 48.0% |
| 3PT%               | 5-11  | 45.5% |
| FT%                | 3-7   | 42.9% |

Dead Ball Rebounds: 2, 0

Technical Fouls::NONE

**LSU - 21**

| NO.           | Name               | Min     | FG   |      |     | Rebounds |    |     | Fouls |    | TP | AS | TO | ST | Blocks |    | +/- |
|---------------|--------------------|---------|------|------|-----|----------|----|-----|-------|----|----|----|----|----|--------|----|-----|
|               |                    |         | M-A  | 3P   | FT  | OR       | DR | TOT | PF    | FD |    |    |    |    | BS     | BA |     |
| 12            | KJ Williams        | F 19:04 | 5-10 | 2-3  | 0-1 | 1        | 1  | 2   | 0     | 2  | 12 | 0  | 1  | 1  | 1      | 1  | -9  |
| 20            | Derek Fountain     | F 11:14 | 0-3  | 0-1  | 0-0 | 1        | 0  | 1   | 1     | 0  | 0  | 0  | 1  | 1  | 0      | 1  | -8  |
| 1             | Cam Hayes          | G 14:22 | 0-2  | 0-2  | 0-0 | 0        | 2  | 2   | 0     | 0  | 0  | 0  | 0  | 0  | 0      | 0  | -1  |
| 11            | Justice Williams   | G 12:11 | 1-2  | 0-0  | 0-0 | 1        | 2  | 3   | 2     | 1  | 2  | 0  | 0  | 0  | 0      | 0  | -10 |
| 44            | Adam Miller        | G 20:00 | 0-6  | 0-5  | 0-0 | 0        | 1  | 1   | 1     | 1  | 0  | 2  | 1  | 0  | 0      | 0  | -11 |
| 0             | Trae Hannibal      | 11:40   | 1-3  | 0-0  | 5-6 | 0        | 1  | 1   | 0     | 4  | 7  | 1  | 0  | 0  | 0      | 0  | -7  |
| 4             | Kendal Coleman     | 03:10   | 0-0  | 0-0  | 0-0 | 0        | 0  | 0   | 1     | 0  | 0  | 0  | 0  | 0  | 0      | 0  | -2  |
| 15            | Tyrell Ward        | 01:47   | 0-0  | 0-0  | 0-0 | 0        | 0  | 0   | 1     | 0  | 0  | 0  | 0  | 0  | 0      | 0  | -4  |
| 13            | Jalen Reed         | 03:36   | 0-1  | 0-0  | 0-0 | 0        | 1  | 1   | 0     | 0  | 0  | 0  | 0  | 0  | 0      | 0  | 0   |
| 34            | Shawn Phillips Jr. | 02:56   | 0-0  | 0-0  | 0-0 | 0        | 0  | 0   | 0     | 0  | 0  | 0  | 0  | 0  | 0      | 0  | -3  |
| Team          |                    |         |      |      |     | 1        | 2  | 3   |       |    | 0  |    | 0  |    |        |    |     |
| <b>Totals</b> |                    |         | 7-27 | 2-11 | 5-7 | 4        | 10 | 14  | 6     | 8  | 21 | 3  | 3  | 2  | 1      | 2  | -11 |

| Shooting By Period |      |       |
|--------------------|------|-------|
| 1st FG%            | 7-27 | 25.9% |
| 3PT%               | 2-11 | 18.2% |
| FT%                | 5-7  | 71.4% |
| GM FG%             | 7-27 | 25.9% |
| 3PT%               | 2-11 | 18.2% |
| FT%                | 5-7  | 71.4% |

Dead Ball Rebounds: 1, 0

Technical Fouls::NONE

|                  | AUB                       | LSU                       |
|------------------|---------------------------|---------------------------|
| Biggest lead     | 15 (1 <sup>st</sup> 2:29) | 0 (1 <sup>st</sup> 20:00) |
| Best Scoring Run | 12(1 <sup>st</sup> 2:29)  | 7(1 <sup>st</sup> 7:48)   |
| Lead Changes     | 0                         |                           |
| Times Tied       | 0                         |                           |
| Time with Lead   | 19:47                     | 00:00                     |

| Points from   | AUB | LSU |
|---------------|-----|-----|
| Turnovers     | 3   | 2   |
| Paint         | 10  | 6   |
| Second Chance | 2   | 2   |
| Fast Breaks   | 3   | 2   |
| Bench         | 12  | 7   |

|     | Period by Period Scoring |     |     |
|-----|--------------------------|-----|-----|
|     | 1st                      | 2nd | TOT |
| AUB | 32                       | 35  | 67  |
| LSU | 21                       | 28  | 49  |



**Auburn at LSU**

**Period 2**

**Quarter Starters:**

|            |               |               |               |               |               |
|------------|---------------|---------------|---------------|---------------|---------------|
| <b>LSU</b> | 1 Hayes C     | 11 Williams J | 12 Williams K | 20 Fountain D | 44 Miller A   |
| <b>AUB</b> | 1 Green Jr. W | 2 Williams J  | 4 Broome J    | 12 Jasper Z   | 22 Flanigan A |

| Game Time | LSU  | Score        | Diff       | AUB  |
|-----------|--|--------------|------------|--|
| 20:00     | 0 HANNIBAL T substitution out                              |              |            |  |
| 20:00     | 11 WILLIAMS J substitution in                              |              |            |  |
| 20:00     |  |              |            | 0 JOHNSON K substitution out                                   |
| 20:00     |  |              |            | 24 BERMAN L substitution out                                   |
| 20:00     |  |              |            | 44 CARDWELL D substitution out                                 |
| 20:00     |  |              |            | 4 BROOME J substitution in                                     |
| 20:00     |  |              |            | 12 JASPER Z substitution in                                    |
| 20:00     |  |              |            | 22 FLANIGAN A substitution in                                  |
| 19:36     | 11 WILLIAMS J 2pt FG in the paint, layup missed            |              |            |  |
| 19:34     |  |              |            | 4 BROOME J defensive rebound (4)                               |
| 19:04     |  |              |            | 2 WILLIAMS J 3pt FG , jump shot missed                         |
| 19:01     | 20 FOUNTAIN D defensive rebound (2)                        |              |            |  |
| 18:54     | 44 MILLER A 2pt FG in the paint, layup made (2)            | <b>23-32</b> | <b>-9</b>  |  |
| 18:24     |  | <b>23-34</b> | <b>-11</b> | 4 BROOME J 2pt FG in the paint, jump shot made (2)             |
| 18:10     | 44 MILLER A 3pt FG , jump shot made (5)                    | <b>26-34</b> | <b>-8</b>  |  |
| 18:10     | 1 HAYES C assist (1)                                       |              |            |  |
| 17:49     |  |              |            | 1 GREEN JR. W 2pt FG in the paint, jump shot missed            |
| 17:46     | 11 WILLIAMS J defensive rebound (4)                        |              |            |  |
| 17:30     | 11 WILLIAMS J 2pt FG in the paint, jump shot made (4)      | <b>28-34</b> | <b>-6</b>  |  |
| 17:02     | 12 WILLIAMS K steal (2)                                    |              |            | 2 WILLIAMS J turnover lost ball (2)                            |
| 16:58     | 1 HAYES C 2pt FG from turnover in the paint, layup blocked |              |            |  |
| 16:58     |  |              |            | 2 WILLIAMS J block (2)   |
| 16:54     | 20 FOUNTAIN D offensive rebound (3)                        |              |            |  |
| 16:53     | 20 FOUNTAIN D turnover lost ball (2)                       |              |            | 4 BROOME J steal (1)   |
| 16:48     |  |              |            | 22 FLANIGAN A 2pt FG from turnover in the paint, layup missed  |
| 16:46     | 12 WILLIAMS K defensive rebound (3)                        |              |            |  |
| 16:40     | jump ball situation  |              |            |  |
| 16:40     | 44 MILLER A turnover lost ball (2)                         |              |            | 22 FLANIGAN A steal (1)  |
| 16:25     |  |              |            | 1 GREEN JR. W 2pt FG from turnover in the paint, layup blocked |
| 16:25     | 20 FOUNTAIN D block (1)                                    |              |            |  |
| 16:23     | 44 MILLER A defensive rebound (2)                          |              |            |  |
| 16:20     | 1 HAYES C 2pt FG in the paint, layup made (2)              | <b>30-34</b> | <b>-4</b>  |  |
| 16:09     |  |              |            | 12 JASPER Z 3pt FG , jump shot missed                          |
| 16:05     | 12 WILLIAMS K defensive rebound (4)                        |              |            |  |
| 15:50     | 12 WILLIAMS K 2pt FG in the paint, jump shot made (14)     | <b>32-34</b> | <b>-2</b>  |  |
| 15:50     | 1 HAYES C assist (2)                                       |              |            |  |
| 15:25     |  | <b>32-37</b> | <b>-5</b>  | 22 FLANIGAN A 3pt FG , jump shot made (8)                      |
| 15:25     |  |              |            | 1 GREEN JR. W assist (2)                                       |
| 15:09     | 44 MILLER A 2pt FG in the paint, layup blocked             |              |            |  |
| 15:09     |  |              |            | 2 WILLIAMS J block (3)   |
| 15:06     | 44 MILLER A offensive rebound (3)                          |              |            |  |
| 15:05     | 11 WILLIAMS J 3pt FG second chance, jump shot made (7)     | <b>35-37</b> | <b>-2</b>  |  |





**Auburn at LSU**

**Officials:** Doug Shows, Steven Anderson, Courtney Green

| Game Time | LSU   | Score        | Diff       | AUB   |
|-----------|---|--------------|------------|---|
| 15:05     | 44 MILLER A assist (3)                                    |              |            |   |
| 14:45     |   |              |            | 22 FLANIGAN A 3pt FG , jump shot missed                                 |
| 14:41     |   |              |            | 12 JASPER Z offensive rebound (2)                                       |
| 14:40     |   | <b>35-39</b> | <b>-4</b>  | 12 JASPER Z 2pt FG second chance in the paint, layup made (5)           |
| 14:39     |   |              |            | Timeout 30 Sec  |
| 14:39     |   |              |            | 12 JASPER Z substitution out  |
| 14:39     |   |              |            | 0 JOHNSON K substitution in   |
| 14:19     | 12 WILLIAMS K turnover lost ball (2)                      |              |            | 4 BROOME J steal (2)  |
| 14:14     |   | <b>35-41</b> | <b>-6</b>  | 4 BROOME J 2pt FG fast break from turnover in the paint, layup made (4) |
| 14:14     |   |              |            | 1 GREEN JR. W assist (3)  |
| 14:14     | Timeout media   |              |            |   |
| 14:11     | 44 MILLER A turnover lost ball (3)                        |              |            | 0 JOHNSON K steal (1)   |
| 14:07     |   | <b>35-44</b> | <b>-9</b>  | 0 JOHNSON K 3pt FG from turnover, jump shot made (6)                    |
| 14:07     |   |              |            | 1 GREEN JR. W assist (4)  |
| 13:37     | 1 HAYES C 3pt FG , jump shot missed                       |              |            |   |
| 13:33     |   |              |            | 1 GREEN JR. W defensive rebound (2)                                     |
| 13:25     |   |              |            | 0 JOHNSON K 3pt FG , jump shot missed                                   |
| 13:20     | 12 WILLIAMS K defensive rebound (5)                       |              |            |   |
| 13:20     | 1 HAYES C substitution out                                |              |            |   |
| 13:20     | 0 HANNIBAL T substitution in                              |              |            |   |
| 13:19     | 0 HANNIBAL T foul drawn (5)                               |              |            | 22 FLANIGAN A foul personal (3 - 1)                                     |
| 13:19     |   |              |            | 22 FLANIGAN A substitution out  |
| 13:19     |   |              |            | 24 BERMAN L substitution in   |
| 13:07     | 20 FOUNTAIN D 2pt FG in the paint, layup made (2)         | <b>37-44</b> | <b>-7</b>  |   |
| 12:29     |   | <b>37-47</b> | <b>-10</b> | 1 GREEN JR. W 3pt FG , jump shot made (10)                              |
| 12:09     | 11 WILLIAMS J turnover bad pass (1)                       |              |            |   |
| 11:49     |   | <b>37-49</b> | <b>-12</b> | 1 GREEN JR. W 2pt FG from turnover in the paint, layup made (12)        |
| 11:28     | 44 MILLER A 3pt FG , jump shot missed                     |              |            |   |
| 11:26     |   |              |            | 1 GREEN JR. W defensive rebound (3)                                     |
| 11:17     | 44 MILLER A steal (1)                                     |              |            | 4 BROOME J turnover lost ball (3)                                       |
| 11:16     | 44 MILLER A turnover bad pass (4)                         |              |            | 1 GREEN JR. W steal (2)   |
| 11:16     | 0 HANNIBAL T foul personal (1 - 1)                        |              |            | 1 GREEN JR. W foul drawn (3)  |
| 11:16     | Timeout media   |              |            |   |
| 11:16     |   |              |            | 2 WILLIAMS J substitution out   |
| 11:16     |   |              |            | 21 TRAORE Y substitution in   |
| 11:01     |   | <b>37-51</b> | <b>-14</b> | 24 BERMAN L 2pt FG from turnover in the paint, layup made (7)           |
| 11:01     | 44 MILLER A foul shooting (2 - 2)                         |              |            | 24 BERMAN L foul drawn (1)  |
| 11:01     |   | <b>37-52</b> | <b>-15</b> | 24 BERMAN L free throw 1 - 1 made (8)                                   |
| 10:47     | 0 HANNIBAL T 2pt FG outside the paint, jump shot made (9) | <b>39-52</b> | <b>-13</b> |   |
| 10:22     |   | <b>39-54</b> | <b>-15</b> | 1 GREEN JR. W 2pt FG in the paint, jump shot made (14)                  |
| 10:04     | 20 FOUNTAIN D substitution out                            |              |            |   |
| 10:04     | 13 REED J substitution in                                 |              |            |   |
| 09:54     | 0 HANNIBAL T foul drawn (6)                               |              |            | 4 BROOME J foul shooting (3 - 2)  |
| 09:54     | 0 HANNIBAL T free throw 1 - 2 missed                      |              |            |   |
| 09:54     | offensive dead ball rebound (2)                           |              |            |   |
| 09:54     | 44 MILLER A substitution out                              |              |            |   |
| 09:54     | 1 HAYES C substitution in                                 |              |            |   |



**Auburn at LSU**

01/18/23 Maravich Assembly Center, Baton Rouge  
2022-23 Men's Basketball

**Game Time:** 6:00 PM  
**Game Duration:** 1:58  
**Attendance:** 9,967

**Officials:** Doug Shows, Steven Anderson, Courtney Green

| Game Time | LSU   | Score        | Diff       | AUB   |
|-----------|---|--------------|------------|---|
| 09:54     |   |              |            | 4 BROOME J substitution out                                     |
| 09:54     |   |              |            | 44 CARDWELL D substitution in                                   |
| 09:54     | 0 HANNIBAL T free throw 2 - 2 made (10)                         | <b>40-54</b> | <b>-14</b> |   |
| 09:36     |   |              |            | 21 TRAORE Y 3pt FG , jump shot missed                           |
| 09:33     |   |              |            | 44 CARDWELL D offensive rebound (4)                             |
| 09:31     |   |              |            | 1 GREEN JR. W 3pt FG second chance, jump shot missed            |
| 09:26     | 13 REED J defensive rebound (2)                                 |              |            |   |
| 09:25     | 13 REED J foul drawn (1)  |              |            | 0 JOHNSON K foul personal (1 - 3)                               |
| 09:12     | 0 HANNIBAL T 2pt FG in the paint, layup missed                  |              |            |   |
| 09:10     | offensive rebound (24)  |              |            |   |
| 08:58     | 0 HANNIBAL T 2pt FG second chance in the paint, layup made (12) | <b>42-54</b> | <b>-12</b> |   |
| 08:37     |   |              |            | 24 BERMAN L 3pt FG , jump shot missed                           |
| 08:33     | 11 WILLIAMS J defensive rebound (5)                             |              |            |   |
| 08:27     | 0 HANNIBAL T 2pt FG in the paint, layup missed                  |              |            |   |
| 08:26     | 13 REED J offensive rebound (3)                                 |              |            |   |
| 08:26     | 13 REED J foul drawn (2)  |              |            | 44 CARDWELL D foul shooting (2 - 4)                             |
| 08:26     | 13 REED J free throw 1 - 2 missed                               |              |            |   |
| 08:26     | offensive dead ball rebound (3)                                 |              |            |   |
| 08:26     | 12 WILLIAMS K substitution out                                  |              |            |   |
| 08:26     | 20 FOUNTAIN D substitution in                                   |              |            |   |
| 08:26     |   |              |            | 21 TRAORE Y substitution out                                    |
| 08:26     |   |              |            | 2 WILLIAMS J substitution in                                    |
| 08:25     | 13 REED J free throw 2 - 2 missed                               |              |            |   |
| 08:24     |   |              |            | 1 GREEN JR. W defensive rebound (4)                             |
| 08:02     |   |              |            | 1 GREEN JR. W 2pt FG in the paint, layup blocked                |
| 08:02     | 13 REED J block (1)   |              |            |   |
| 08:02     |   |              |            | 2 WILLIAMS J offensive rebound (5)                              |
| 08:02     |   | <b>42-56</b> | <b>-14</b> | 2 WILLIAMS J 2pt FG second chance in the paint, layup made (7)  |
| 08:02     | 13 REED J foul shooting (1 - 3)                                 |              |            | 2 WILLIAMS J foul drawn (1)                                     |
| 08:02     |   |              |            | 1 GREEN JR. W substitution out                                  |
| 08:02     |   |              |            | 3 DONALDSON T substitution in                                   |
| 08:02     | 11 WILLIAMS J substitution out                                  |              |            |   |
| 08:02     | 44 MILLER A substitution in                                     |              |            |   |
| 08:02     |   | <b>42-57</b> | <b>-15</b> | 2 WILLIAMS J free throw 1 - 1 made (8)                          |
| 07:44     | 0 HANNIBAL T turnover lost ball (1)                             |              |            | 3 DONALDSON T steal (1)   |
| 07:38     |   | <b>42-59</b> | <b>-17</b> | 2 WILLIAMS J 2pt FG from turnover in the paint, layup made (10) |
| 07:38     |   |              |            | 44 CARDWELL D assist (2)  |
| 07:25     | 20 FOUNTAIN D 2pt FG in the paint, layup blocked                |              |            |   |
| 07:25     |   |              |            | 44 CARDWELL D block (1)   |
| 07:24     | offensive rebound (27)  |              |            |   |
| 07:24     | Timeout media   |              |            |   |
| 07:24     | 0 HANNIBAL T substitution out                                   |              |            |   |
| 07:24     | 13 REED J substitution out                                      |              |            |   |
| 07:24     | 11 WILLIAMS J substitution in                                   |              |            |   |
| 07:24     | 12 WILLIAMS K substitution in                                   |              |            |   |
| 07:24     |   |              |            | 0 JOHNSON K substitution out                                    |
| 07:24     |   |              |            | 24 BERMAN L substitution out                                    |



**Auburn at LSU**

**Officials:** Doug Shows, Steven Anderson, Courtney Green

| Game Time | LSU  | Score        | Diff       | AUB   |
|-----------|--|--------------|------------|---|
| 07:24     |  |              |            | 12 JASPER Z substitution in                           |
| 07:24     |  |              |            | 22 FLANIGAN A substitution in                         |
| 07:19     | 11 WILLIAMS J 2pt FG second chance in the paint, layup missed                |              |            |   |
| 07:19     | 20 FOUNTAIN D offensive rebound (4)  |              |            |   |
| 07:19     | 20 FOUNTAIN D foul drawn (1)   |              |            | 22 FLANIGAN A foul personal (4 - 5)                   |
| 07:19     |  |              |            | 22 FLANIGAN A substitution out                        |
| 07:19     |  |              |            | 24 BERMAN L substitution in                           |
| 07:06     | 1 HAYES C 2pt FG second chance in the paint, layup missed                    |              |            |   |
| 07:03     |  |              |            | 44 CARDWELL D defensive rebound (5)                   |
| 06:44     |  | <b>42-61</b> | <b>-19</b> | 2 WILLIAMS J 2pt FG in the paint, jump shot made (12) |
| 06:27     | 12 WILLIAMS K 2pt FG in the paint, jump shot made (16)                       | <b>44-61</b> | <b>-17</b> |   |
| 06:27     | 11 WILLIAMS J assist (1)   |              |            |   |
| 06:09     |  |              |            | 3 DONALDSON T 3pt FG , jump shot missed               |
| 06:06     | 1 HAYES C defensive rebound (3)  |              |            |   |
| 05:53     | 11 WILLIAMS J 2pt FG in the paint, layup blocked                             |              |            |   |
| 05:53     |  |              |            | 44 CARDWELL D block (2)                               |
| 05:50     |  |              |            | 3 DONALDSON T defensive rebound (2)                   |
| 05:50     | 44 MILLER A foul personal (3 - 4)  |              |            | 3 DONALDSON T foul drawn (2)                          |
| 05:50     |  |              |            | 3 DONALDSON T substitution out                        |
| 05:50     |  |              |            | 1 GREEN JR. W substitution in                         |
| 05:50     | 20 FOUNTAIN D substitution out   |              |            |   |
| 05:50     | 0 HANNIBAL T substitution in   |              |            |   |
| 05:44     |  | <b>44-63</b> | <b>-19</b> | 2 WILLIAMS J 2pt FG in the paint, jump shot made (14) |
| 05:33     | 12 WILLIAMS K 3pt FG , jump shot missed                                      |              |            |   |
| 05:30     |  |              |            | 44 CARDWELL D defensive rebound (6)                   |
| 05:29     | 0 HANNIBAL T foul personal (2 - 5)   |              |            | 44 CARDWELL D foul drawn (2)                          |
| 05:17     |  |              |            | 1 GREEN JR. W 3pt FG , jump shot missed               |
| 05:13     |  |              |            | 24 BERMAN L offensive rebound (1)                     |
| 04:55     |  |              |            | 44 CARDWELL D 3pt FG second chance, jump shot missed  |
| 04:51     |  |              |            | 2 WILLIAMS J offensive rebound (6)                    |
| 04:31     |  |              |            | turnover shot clock (9)                               |
| 04:31     | 1 HAYES C substitution out   |              |            |   |
| 04:31     | 20 FOUNTAIN D substitution in  |              |            |   |
| 04:31     |  |              |            | 44 CARDWELL D substitution out                        |
| 04:31     |  |              |            | 4 BROOME J substitution in                            |
| 04:16     | 0 HANNIBAL T 2pt FG from turnover outside the paint, jump shot missed        |              |            |   |
| 04:14     | 12 WILLIAMS K offensive rebound (6)  |              |            |   |
| 04:12     | 12 WILLIAMS K 2pt FG from turnover second chance in the paint, layup blocked |              |            |   |
| 04:12     |  |              |            | 4 BROOME J block (2)                                  |
| 04:10     |  |              |            | 4 BROOME J defensive rebound (5)                      |
| 04:10     | 20 FOUNTAIN D foul personal (2 - 6)  |              |            | 4 BROOME J foul drawn (3)                             |
| 03:49     |  |              |            | 2 WILLIAMS J 2pt FG in the paint, jump shot missed    |
| 03:47     | 11 WILLIAMS J defensive rebound (6)  |              |            |   |
| 03:39     | 12 WILLIAMS K 3pt FG , jump shot missed                                      |              |            |   |
| 03:33     | 20 FOUNTAIN D offensive rebound (5)  |              |            |   |
| 03:33     | Timeout 30 Sec   |              |            |   |
| 03:33     |  |              |            | 1 GREEN JR. W substitution out                        |



**Auburn at LSU**

**Officials:** Doug Shows, Steven Anderson, Courtney Green

| Game Time | LSU   | Score        | Diff       | AUB  |
|-----------|---|--------------|------------|--|
| 03:33     |   |              |            | 12 JASPER Z substitution out                                   |
| 03:33     |   |              |            | 24 BERMAN L substitution out                                   |
| 03:33     |   |              |            | 0 JOHNSON K substitution in                                    |
| 03:33     |   |              |            | 3 DONALDSON T substitution in                                  |
| 03:33     |   |              |            | 22 FLANIGAN A substitution in                                  |
| 03:17     | 44 MILLER A 3pt FG second chance, jump shot missed  |              |            |  |
| 03:12     | 12 WILLIAMS K offensive rebound (7)                 |              |            |  |
| 03:11     | 12 WILLIAMS K turnover lost ball (3)                |              |            | 0 JOHNSON K steal (2)  |
| 03:06     |   |              |            | 0 JOHNSON K 2pt FG from turnover in the paint, layup missed    |
| 03:04     | 12 WILLIAMS K defensive rebound (8)                 |              |            |  |
| 02:50     | 20 FOUNTAIN D 2pt FG in the paint, jump shot missed |              |            |  |
| 02:46     |   |              |            | 2 WILLIAMS J defensive rebound (7)                             |
| 02:31     |   |              |            | 22 FLANIGAN A 2pt FG in the paint, layup blocked               |
| 02:31     | 12 WILLIAMS K block (2)                             |              |            |  |
| 02:30     |   |              |            | offensive rebound (37)   |
| 02:30     | 12 WILLIAMS K substitution out                      |              |            |  |
| 02:30     | 20 FOUNTAIN D substitution out                      |              |            |  |
| 02:30     | 4 COLEMAN K substitution in                         |              |            |  |
| 02:30     | 13 REED J substitution in                           |              |            |  |
| 02:29     |   |              |            | 4 BROOME J 2pt FG second chance in the paint, jump shot missed |
| 02:26     | 13 REED J defensive rebound (4)                     |              |            |  |
| 02:18     | 0 HANNIBAL T 3pt FG , jump shot missed              |              |            |  |
| 02:15     |   |              |            | 4 BROOME J defensive rebound (6)                               |
| 02:11     |   |              |            | 0 JOHNSON K 2pt FG in the paint, layup blocked                 |
| 02:11     | 0 HANNIBAL T block (1)                              |              |            |  |
| 02:08     | 13 REED J defensive rebound (5)                     |              |            |  |
| 02:01     | 0 HANNIBAL T 2pt FG in the paint, layup missed      |              |            |  |
| 01:59     | 0 HANNIBAL T offensive rebound (2)                  |              |            |  |
| 01:59     | 0 HANNIBAL T foul drawn (7)                         |              |            | 22 FLANIGAN A foul shooting (5 - 6)                            |
| 01:59     |   |              |            | 22 FLANIGAN A substitution out                                 |
| 01:59     |   |              |            | 24 BERMAN L substitution in                                    |
| 01:59     | 0 HANNIBAL T free throw 1 - 2 made (13)             | <b>45-63</b> | <b>-18</b> |  |
| 01:59     | 0 HANNIBAL T free throw 2 - 2 made (14)             | <b>46-63</b> | <b>-17</b> |  |
| 01:43     |   |              |            | 4 BROOME J 2pt FG in the paint, layup missed                   |
| 01:41     | 4 COLEMAN K defensive rebound (1)                   |              |            |  |
| 01:34     | 0 HANNIBAL T foul drawn (8)                         |              |            | 24 BERMAN L foul shooting (2 - 7)                              |
| 01:34     | 0 HANNIBAL T free throw 1 - 2 made (15)             | <b>47-63</b> | <b>-16</b> |  |
| 01:34     | 44 MILLER A substitution out                        |              |            |  |
| 01:34     | 15 WARD T substitution in                           |              |            |  |
| 01:34     | 0 HANNIBAL T free throw 2 - 2 made (16)             | <b>48-63</b> | <b>-15</b> |  |
| 01:16     | 11 WILLIAMS J foul shooting (3 - 7)                 |              |            | 0 JOHNSON K foul drawn (1)                                     |
| 01:16     |   | <b>48-64</b> | <b>-16</b> | 0 JOHNSON K free throw 1 - 2 made (7)                          |
| 01:16     |   |              |            | 2 WILLIAMS J substitution out                                  |
| 01:16     |   |              |            | 21 TRAORE Y substitution in                                    |
| 01:16     |   |              |            | 4 BROOME J substitution out                                    |
| 01:16     |   |              |            | 44 CARDWELL D substitution in                                  |
| 01:16     |   | <b>48-65</b> | <b>-17</b> | 0 JOHNSON K free throw 2 - 2 made (8)                          |
| 01:12     | 0 HANNIBAL T 2pt FG in the paint, layup missed      |              |            |  |



Official Basketball Play by Play - Second Half

### Auburn at LSU

01/18/23 Maravich Assembly Center, Baton Rouge  
2022-23 Men's Basketball

Game Time: 6:00 PM

Game Duration: 1:58

Attendance: 9,967

Officials: Doug Shows, Steven Anderson, Courtney Green

| Game Time            | LSU  | Score        | Diff       | AUB   |
|----------------------|--|--------------|------------|---|
| 01:09                |  |              |            | 3 DONALDSON T defensive rebound (3)                 |
| 00:59                |  | <b>48-67</b> | <b>-19</b> | 21 TRAORE Y 2pt FG in the paint, jump shot made (2) |
| 00:51                | 4 COLEMAN K foul drawn (1)                       |              |            | 44 CARDWELL D foul shooting (3 - 8)                 |
| 00:51                | 4 COLEMAN K free throw fast break 1 - 2 made (1) | <b>49-67</b> | <b>-18</b> |   |
| 00:51                | 4 COLEMAN K free throw fast break 2 - 2 missed   |              |            |   |
| 00:50                |  |              |            | 3 DONALDSON T defensive rebound (4)                 |
| 00:34                | 13 REED J steal (1)                              |              |            | 21 TRAORE Y turnover lost ball (1)                  |
| 00:26                | 15 WARD T 3pt FG from turnover, jump shot missed |              |            |   |
| 00:23                |  |              |            | 44 CARDWELL D defensive rebound (7)                 |
| <b>END OF GAME</b>   |  |              |            |   |
| <b>LSU 49-67 AUB</b> |  |              |            |   |



**Auburn at LSU**

01/18/23 Maravich Assembly Center, Baton Rouge  
2022-23 Men's Basketball

Game Time: 6:00 PM  
Game Duration: 1:58  
Attendance: 9,967

Officials: Doug Shows, Steven Anderson, Courtney Green

**Auburn - 35**

| NO.           | Name              | F | Min   | FG    |      |     | Rebounds |    |     | Fouls |    | TP | AS | TO | ST | Blocks |    | +/- |
|---------------|-------------------|---|-------|-------|------|-----|----------|----|-----|-------|----|----|----|----|----|--------|----|-----|
|               |                   |   |       | M-A   | M-A  | M-A | OR       | DR | TOT | PF    | FD |    |    |    |    | BS     | BA |     |
| 2             | Jaylin Williams   | F | 15:54 | 4-6   | 0-1  | 1-1 | 2        | 1  | 3   | 0     | 1  | 9  | 0  | 1  | 0  | 2      | 0  | 5   |
| 4             | Johni Broome      | F | 13:21 | 2-4   | 0-0  | 0-0 | 0        | 3  | 3   | 1     | 1  | 4  | 0  | 1  | 2  | 1      | 0  | 1   |
| 1             | Wendell Green Jr. | G | 14:15 | 3-8   | 1-3  | 0-0 | 0        | 3  | 3   | 0     | 1  | 7  | 3  | 0  | 1  | 0      | 2  | 5   |
| 12            | Zep Jasper        | G | 09:12 | 1-2   | 0-1  | 0-0 | 1        | 0  | 1   | 0     | 0  | 2  | 0  | 0  | 0  | 0      | 0  | -5  |
| 22            | Allen Flanigan    | G | 08:20 | 1-4   | 1-2  | 0-0 | 0        | 0  | 0   | 3     | 0  | 3  | 0  | 0  | 1  | 0      | 1  | -2  |
| 0             | K.D. Johnson      |   | 10:48 | 1-4   | 1-2  | 2-2 | 0        | 0  | 0   | 1     | 1  | 5  | 0  | 0  | 2  | 0      | 1  | 12  |
| 24            | Lior Berman       |   | 11:40 | 1-2   | 0-1  | 1-1 | 1        | 0  | 1   | 1     | 1  | 3  | 0  | 0  | 0  | 0      | 0  | 9   |
| 21            | Yohan Traore      |   | 04:06 | 1-2   | 0-1  | 0-0 | 0        | 0  | 0   | 0     | 0  | 2  | 0  | 1  | 0  | 0      | 0  | 2   |
| 44            | Dylan Cardwell    |   | 06:39 | 0-1   | 0-1  | 0-0 | 1        | 3  | 4   | 2     | 1  | 0  | 1  | 0  | 0  | 2      | 0  | 6   |
| 3             | Tre Donaldson     |   | 05:45 | 0-1   | 0-1  | 0-0 | 0        | 3  | 3   | 0     | 1  | 0  | 0  | 0  | 1  | 0      | 0  | 2   |
| Team          |                   |   |       |       |      |     | 1        | 0  | 1   |       |    | 0  |    | 1  |    |        |    |     |
| <b>Totals</b> |                   |   |       | 14-34 | 3-13 | 4-4 | 6        | 13 | 19  | 8     | 7  | 35 | 4  | 4  | 7  | 5      | 4  | 7   |

| Shooting By Period  |       |        |
|---------------------|-------|--------|
| 2 <sup>nd</sup> FG% | 14-34 | 41.2%  |
| 3PT%                | 3-13  | 23.1%  |
| FT%                 | 4-4   | 100%   |
| GM FG%              | 14-34 | 41.2%  |
| 3PT%                | 3-13  | 23.1%  |
| FT%                 | 4-4   | 100.0% |

Dead Ball Rebounds: 0, 0

Technical Fouls::NONE

**LSU - 28**

| NO.           | Name             | F | Min   | FG    |     |      | Rebounds |    |     | Fouls |    | TP | AS | TO | ST | Blocks |    | +/- |
|---------------|------------------|---|-------|-------|-----|------|----------|----|-----|-------|----|----|----|----|----|--------|----|-----|
|               |                  |   |       | M-A   | M-A | M-A  | OR       | DR | TOT | PF    | FD |    |    |    |    | BS     | BA |     |
| 12            | KJ Williams      | F | 16:28 | 2-5   | 0-2 | 0-0  | 2        | 4  | 6   | 0     | 0  | 4  | 0  | 2  | 1  | 1      | 1  | -3  |
| 20            | Derek Fountain   | F | 14:33 | 1-3   | 0-0 | 0-0  | 3        | 1  | 4   | 1     | 1  | 2  | 0  | 1  | 0  | 1      | 1  | -9  |
| 1             | Cam Hayes        | G | 12:03 | 1-4   | 0-1 | 0-0  | 0        | 1  | 1   | 0     | 0  | 2  | 2  | 0  | 0  | 0      | 1  | -2  |
| 11            | Justice Williams | G | 19:22 | 2-5   | 1-1 | 0-0  | 0        | 3  | 3   | 1     | 0  | 5  | 1  | 1  | 0  | 0      | 1  | -4  |
| 44            | Adam Miller      | G | 16:34 | 2-5   | 1-3 | 0-0  | 1        | 1  | 2   | 2     | 0  | 5  | 1  | 3  | 1  | 0      | 1  | -6  |
| 0             | Trae Hannibal    |   | 11:46 | 2-8   | 0-1 | 5-6  | 1        | 0  | 1   | 2     | 4  | 9  | 0  | 1  | 0  | 1      | 0  | -9  |
| 13            | Jalen Reed       |   | 05:10 | 0-0   | 0-0 | 0-2  | 1        | 3  | 4   | 1     | 2  | 0  | 0  | 0  | 1  | 1      | 0  | -1  |
| 4             | Kendal Coleman   |   | 02:30 | 0-0   | 0-0 | 1-2  | 0        | 1  | 1   | 0     | 1  | 1  | 0  | 0  | 0  | 0      | 0  | 1   |
| 15            | Tyrell Ward      |   | 01:34 | 0-1   | 0-1 | 0-0  | 0        | 0  | 0   | 0     | 0  | 0  | 0  | 0  | 0  | 0      | 0  | -2  |
| Team          |                  |   |       |       |     |      | 2        | 0  | 2   |       |    | 0  |    | 0  |    |        |    |     |
| <b>Totals</b> |                  |   |       | 10-31 | 2-9 | 6-10 | 10       | 14 | 24  | 7     | 8  | 28 | 4  | 8  | 3  | 4      | 5  | -7  |

| Shooting By Period  |       |       |
|---------------------|-------|-------|
| 2 <sup>nd</sup> FG% | 10-31 | 32.3% |
| 3PT%                | 2-9   | 22.2% |
| FT%                 | 6-10  | 60%   |
| GM FG%              | 10-31 | 32.3% |
| 3PT%                | 2-9   | 22.2% |
| FT%                 | 6-10  | 60.0% |

Dead Ball Rebounds: 2, 0

Technical Fouls::NONE

|                  | AUB                       | LSU                       |
|------------------|---------------------------|---------------------------|
| Biggest lead     | 19 (2 <sup>nd</sup> 6:44) | 0 (1 <sup>st</sup> 20:00) |
| Best Scoring Run | 8(2 <sup>nd</sup> 11:01)  | 9(2 <sup>nd</sup> 15:50)  |
| Lead Changes     | 0                         |                           |
| Times Tied       | 0                         |                           |
| Time with Lead   | 19:36                     | 00:00                     |

| Points from   | AUB | LSU |
|---------------|-----|-----|
| Turnovers     | 12  | 0   |
| Paint         | 22  | 14  |
| Second Chance | 5   | 7   |
| Fast Breaks   | 2   | 1   |
| Bench         | 10  | 10  |

|     | Period by Period Scoring |     |     |
|-----|--------------------------|-----|-----|
|     | 1st                      | 2nd | TOT |
| AUB | 32                       | 35  | 67  |
| LSU | 21                       | 28  | 49  |



**Auburn at LSU**

01/18/23 Maravich Assembly Center, Baton Rouge  
2022-23 Men's Basketball

**Game Time:** 6:00 PM  
**Game Duration:** 1:58  
**Attendance:** 9,967

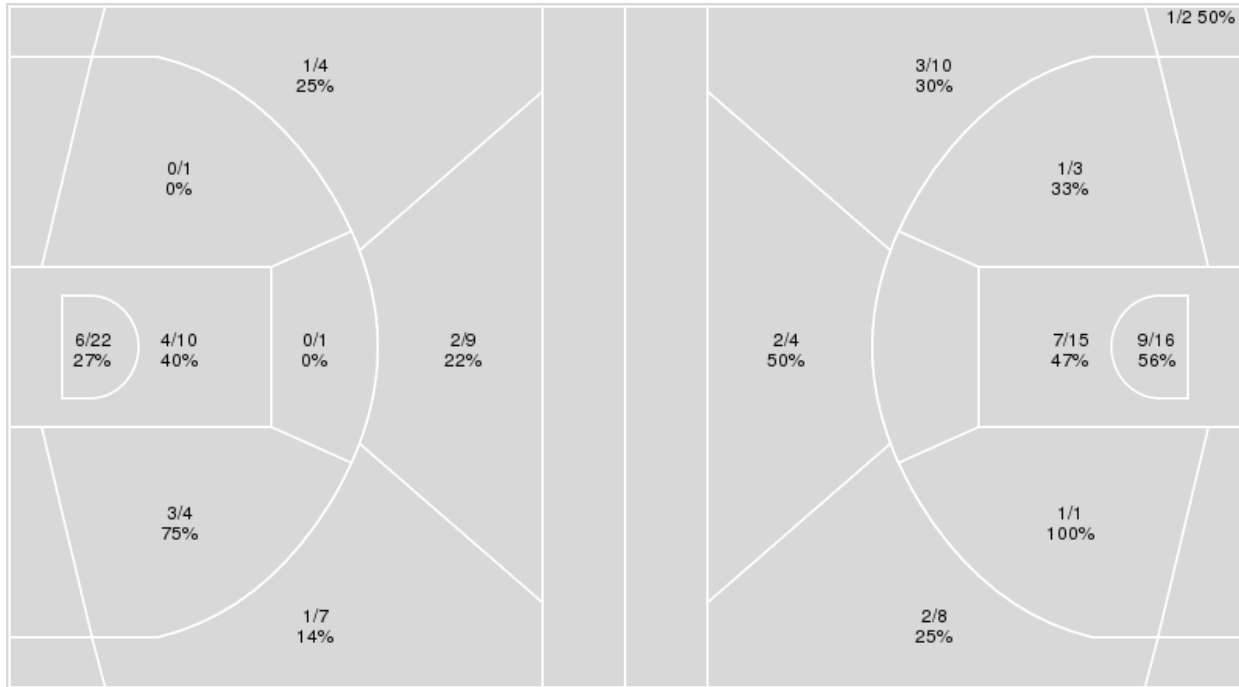
**Officials:** Doug Shows, Steven Anderson, Courtney Green

{ Players => 0, 1, 2, 3, 4, 5, 10, 11, 12, 13, 15, 20, 21, 25, 30, 34, 44; }  
FG Types => All; Results => All;

{ Players => 0, 1, 2, 3, 4, 5, 10, 12, 14, 20, 21, 22, 23, 24, 25, 42, 44, 55; }  
FG Types => All; Results => All;

**LSU**

**Auburn**



| LSU         | M/A   | %  |
|-------------|-------|----|
| Field Goals | 17/58 | 29 |
| 2 Points    | 13/38 | 34 |
| 3 Points    | 4/20  | 20 |
| Free Throws | 11/17 | 65 |

| Auburn      | M/A   | %  |
|-------------|-------|----|
| Field Goals | 26/59 | 44 |
| 2 Points    | 18/35 | 51 |
| 3 Points    | 8/24  | 33 |
| Free Throws | 7/11  | 64 |



**Auburn at LSU**

01/18/23 Maravich Assembly Center, Baton Rouge  
2022-23 Men's Basketball

**Game Time:** 6:00 PM  
**Game Duration:** 1:58  
**Attendance:** 9,967

**Officials:** Doug Shows, Steven Anderson, Courtney Green

**Auburn**

| No | Name              | Mins  |       | Score   |         | Points Diff |     | Points per Min |      | Assists |     | Rebounds |     | Steals |     | Turnovers |     |
|----|-------------------|-------|-------|---------|---------|-------------|-----|----------------|------|---------|-----|----------|-----|--------|-----|-----------|-----|
|    |                   | On    | Off   | On      | Off     | On          | Off | On             | Off  | On      | Off | On       | Off | On     | Off | On        | Off |
| 0  | K.D. Johnson      | 21:55 | 18:05 | 39 - 25 | 28 - 24 | 14          | 4   | 1.78           | 1.55 | 6       | 5   | 25       | 16  | 6      | 2   | 4         | 6   |
| 1  | Wendell Green Jr. | 29:12 | 10:48 | 50 - 37 | 17 - 12 | 13          | 5   | 1.71           | 1.57 | 8       | 3   | 27       | 14  | 6      | 2   | 7         | 3   |
| 2  | Jaylin Williams   | 32:44 | 07:16 | 56 - 42 | 11 - 7  | 14          | 4   | 1.71           | 1.51 | 10      | 1   | 34       | 7   | 8      | 0   | 9         | 1   |
| 3  | Tre Donaldson     | 10:48 | 29:12 | 17 - 12 | 50 - 37 | 5           | 13  | 1.57           | 1.71 | 3       | 8   | 14       | 27  | 2      | 6   | 3         | 7   |
| 4  | Johni Broome      | 22:41 | 17:19 | 38 - 33 | 29 - 16 | 5           | 13  | 1.68           | 1.67 | 7       | 4   | 19       | 22  | 6      | 2   | 7         | 3   |
| 12 | Zep Jasper        | 18:05 | 21:55 | 28 - 24 | 39 - 25 | 4           | 14  | 1.55           | 1.78 | 5       | 6   | 16       | 25  | 2      | 6   | 6         | 4   |
| 21 | Yohan Traore      | 07:16 | 32:44 | 11 - 7  | 56 - 42 | 4           | 14  | 1.51           | 1.71 | 1       | 10  | 7        | 34  | 0      | 8   | 1         | 9   |
| 22 | Allen Flanigan    | 23:27 | 16:33 | 37 - 27 | 30 - 22 | 10          | 8   | 1.58           | 1.81 | 7       | 4   | 23       | 18  | 6      | 2   | 5         | 5   |
| 24 | Lior Berman       | 16:33 | 23:27 | 30 - 22 | 37 - 27 | 8           | 10  | 1.81           | 1.58 | 4       | 7   | 18       | 23  | 2      | 6   | 5         | 5   |
| 44 | Dylan Cardwell    | 17:19 | 22:41 | 29 - 16 | 38 - 33 | 13          | 5   | 1.67           | 1.68 | 4       | 7   | 22       | 19  | 2      | 6   | 3         | 7   |

**LSU**

| No | Name               | Mins  |       | Score   |         | Points Diff |     | Points per Min |      | Assists |     | Rebounds |     | Steals |     | Turnovers |     |
|----|--------------------|-------|-------|---------|---------|-------------|-----|----------------|------|---------|-----|----------|-----|--------|-----|-----------|-----|
|    |                    | On    | Off   | On      | Off     | On          | Off | On             | Off  | On      | Off | On       | Off | On     | Off | On        | Off |
| 0  | Trae Hannibal      | 23:26 | 16:34 | 23 - 39 | 26 - 28 | -16         | -2  | 0.98           | 1.57 | 1       | 6   | 22       | 16  | 3      | 2   | 6         | 5   |
| 1  | Cam Hayes          | 26:25 | 13:35 | 35 - 38 | 14 - 29 | -3          | -15 | 1.32           | 1.03 | 6       | 1   | 27       | 11  | 3      | 2   | 6         | 5   |
| 4  | Kendal Coleman     | 05:40 | 34:20 | 6 - 7   | 43 - 60 | -1          | -17 | 1.06           | 1.25 | 0       | 7   | 7        | 31  | 1      | 4   | 0         | 11  |
| 11 | Justice Williams   | 31:33 | 08:27 | 42 - 56 | 7 - 11  | -14         | -4  | 1.33           | 0.83 | 7       | 0   | 30       | 8   | 4      | 1   | 10        | 1   |
| 12 | KJ Williams        | 35:32 | 04:28 | 43 - 55 | 6 - 12  | -12         | -6  | 1.21           | 1.34 | 7       | 0   | 33       | 5   | 4      | 1   | 10        | 1   |
| 13 | Jalen Reed         | 08:46 | 31:14 | 13 - 14 | 36 - 53 | -1          | -17 | 1.48           | 1.15 | 0       | 7   | 12       | 26  | 2      | 3   | 1         | 10  |
| 15 | Tyrell Ward        | 03:21 | 36:39 | 3 - 9   | 46 - 58 | -6          | -12 | 0.90           | 1.26 | 0       | 7   | 1        | 37  | 1      | 4   | 0         | 11  |
| 20 | Derek Fountain     | 25:47 | 14:13 | 32 - 49 | 17 - 18 | -17         | -1  | 1.24           | 1.20 | 6       | 1   | 23       | 15  | 3      | 2   | 10        | 1   |
| 34 | Shawn Phillips Jr. | 02:56 | 37:04 | 4 - 7   | 45 - 60 | -3          | -15 | 1.36           | 1.21 | 1       | 6   | 1        | 37  | 0      | 5   | 1         | 10  |
| 44 | Adam Miller        | 36:34 | 03:26 | 44 - 61 | 5 - 6   | -17         | -1  | 1.20           | 1.46 | 7       | 0   | 34       | 4   | 4      | 1   | 11        | 0   |

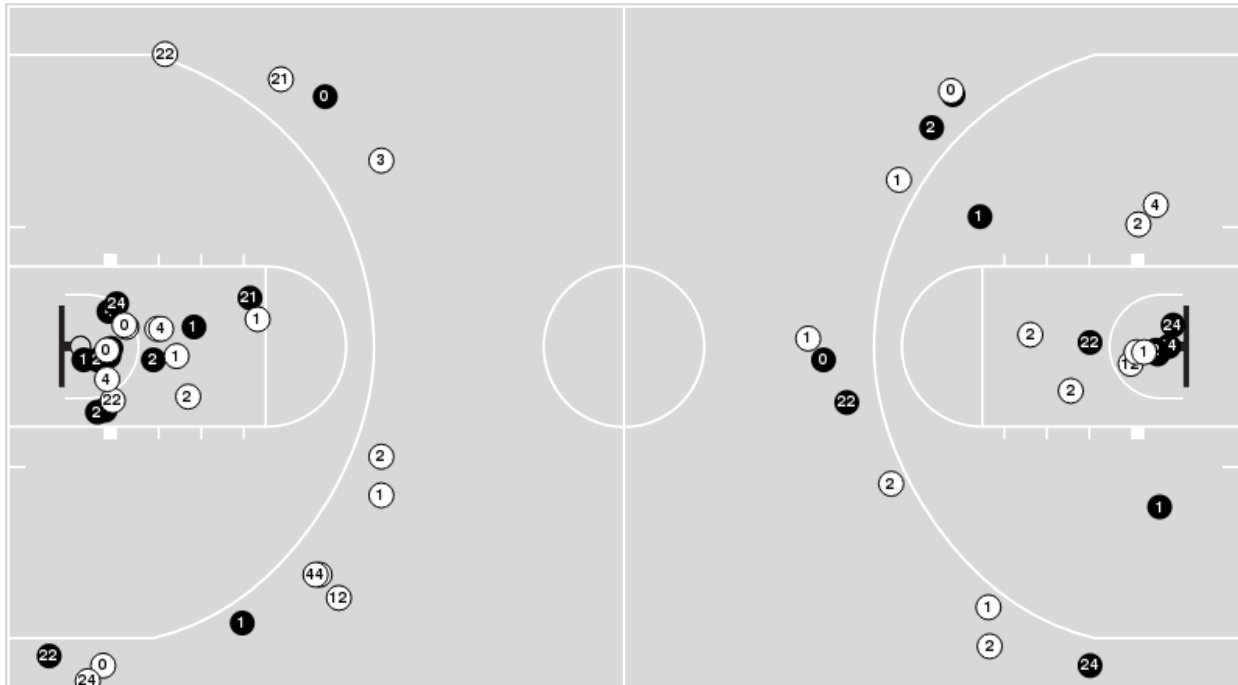




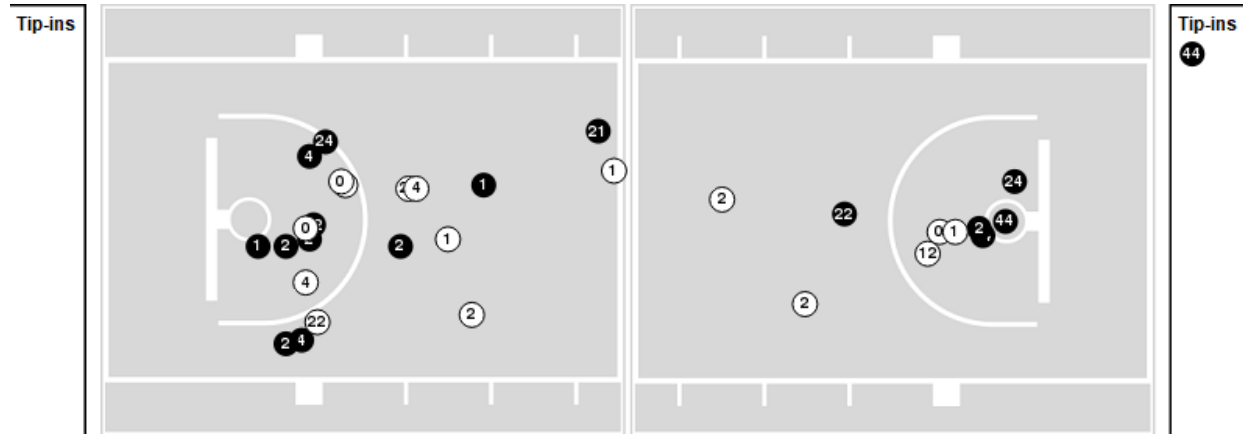
Players => 0, 1, 2, 3, 4, 5, 10, 12, 14, 20, 21, 22, 23, 24, 25, 42, 44, 55 FG Types=>All Results=>All

**Auburn**

**All Field Goals**



**Blow Up Chart**



● Made    ○ Missed    N - Player Number

| Auburn      | M/A   | %  |
|-------------|-------|----|
| Field Goals | 26/59 | 44 |
| 2 Points    | 18/35 | 51 |
| 3 Points    | 8/24  | 33 |
| Free Throws | 7/11  | 64 |

| Auburn               | M/A          | %   |
|----------------------|--------------|-----|
| Points in the Paint  | 32 (16 / 31) | 52  |
| Fast Break Points    | 5 (2/2)      | 100 |
| Second Chance Points | 7 (4/9)      | 44  |
| Effective FG%        | 51           |     |



**Auburn at LSU**

01/18/23 Maravich Assembly Center, Baton Rouge  
2022-23 Men's Basketball

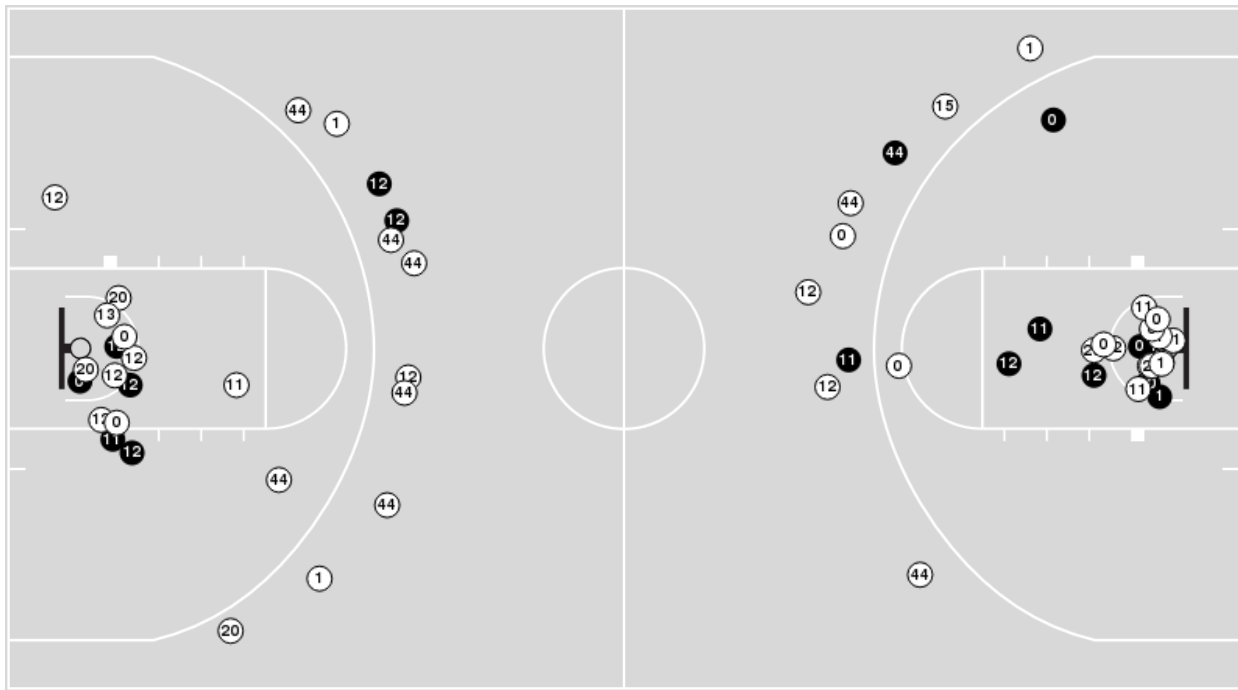
**Game Time:** 6:00 PM  
**Game Duration:** 1:58  
**Attendance:** 9,967

**Officials:** Doug Shows, Steven Anderson, Courtney Green

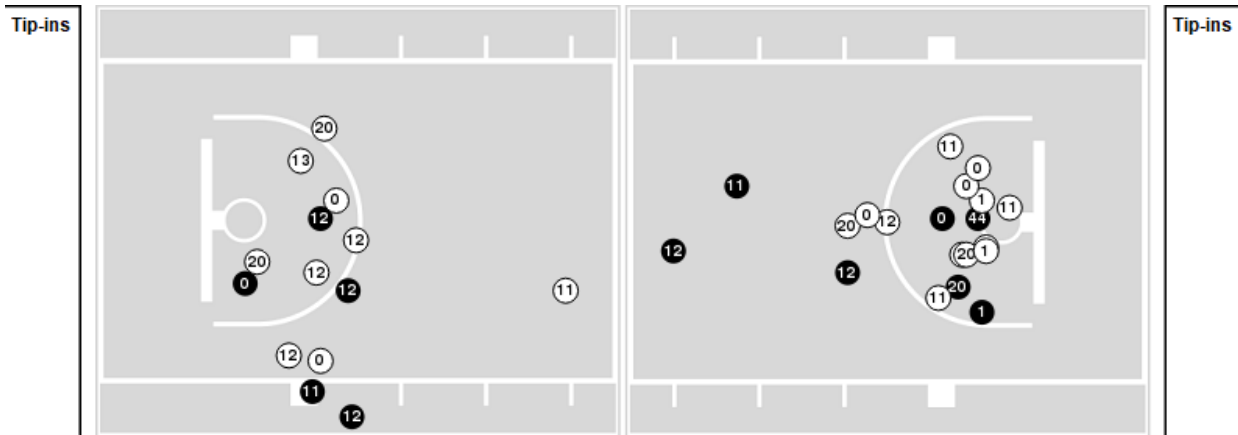
Players => 0, 1, 2, 3, 4, 5, 10, 11, 12, 13, 15, 20, 21, 25, 30, 34, 44 FG Types=>AllResults=>All

**LSU**

**All Field Goals**



**Blow Up Chart**



● Made ○ Missed N - Player Number

| LSU         | M/A   | %  |
|-------------|-------|----|
| Field Goals | 17/58 | 29 |
| 2 Points    | 13/38 | 34 |
| 3 Points    | 4/20  | 20 |
| Free Throws | 11/17 | 65 |

| LSU                  | M/A          | %  |
|----------------------|--------------|----|
| Points in the Paint  | 20 (10 / 32) | 31 |
| Fast Break Points    | 3 (3/4)      | 75 |
| Second Chance Points | 9 (5/13)     | 38 |
| Effective FG%        | 33           |    |



**Auburn at LSU**

**Officials:** Doug Shows, Steven Anderson, Courtney Green

**Auburn**

| Lineup   | Quarter On | Time On | Quarter Off | Time Off | Time on Court | Score | Score Diff | Reb | Stl | Tov | Ass | PPP    |
|--|------------|---------|-------------|----------|---------------|-------|------------|-----|-----|-----|-----|--------|
| 1- Green Jr. W/ 2- Williams J/ 4- Broome J/ 12- Jasper Z/ 22- Flanigan A/    | 1          | 20:00   | 1           | 16:01    | 03:59         | 10-5  | 5          | 4   | 0   | 1   | 2   | 1.7361 |
| 0- Johnson K/ 1- Green Jr. W/ 2- Williams J/ 22- Flanigan A/ 44- Cardwell D/ | 1          | 16:01   | 1           | 14:41    | 01:20         | 1-0   | 1          | 3   | 0   | 0   | 0   | 0.6944 |
| 0- Johnson K/ 1- Green Jr. W/ 21- Traore Y/ 22- Flanigan A/ 44- Cardwell D/  | 1          | 14:41   | 1           | 12:59    | 01:42         | 0-0   | 0          | 2   | 0   | 0   | 0   | 0.0000 |
| 0- Johnson K/ 3- Donaldson T/ 21- Traore Y/ 24- Berman L/ 44- Cardwell D/    | 1          | 12:59   | 1           | 12:36    | 00:23         | 0-0   | 0          | 0   | 0   | 0   | 0   | 0.0000 |
| 0- Johnson K/ 3- Donaldson T/ 4- Broome J/ 21- Traore Y/ 24- Berman L/       | 1          | 12:36   | 1           | 11:31    | 01:05         | 3-1   | 2          | 1   | 0   | 0   | 1   | 3.0000 |
| 0- Johnson K/ 2- Williams J/ 3- Donaldson T/ 4- Broome J/ 24- Berman L/      | 1          | 11:31   | 1           | 08:51    | 02:40         | 2-4   | -2         | 4   | 0   | 2   | 1   | 0.3333 |
| 1- Green Jr. W/ 2- Williams J/ 4- Broome J/ 12- Jasper Z/ 22- Flanigan A/    | 1          | 08:51   | 1           | 08:02    | 00:49         | 0-0   | 0          | 1   | 0   | 0   | 0   | 0.0000 |
| 1- Green Jr. W/ 2- Williams J/ 12- Jasper Z/ 22- Flanigan A/ 44- Cardwell D/ | 1          | 08:02   | 1           | 05:47    | 02:15         | 4-3   | 1          | 2   | 0   | 1   | 2   | 1.3333 |
| 1- Green Jr. W/ 2- Williams J/ 4- Broome J/ 12- Jasper Z/ 22- Flanigan A/    | 1          | 05:47   | 1           | 05:32    | 00:15         | 0-0   | 0          | 0   | 0   | 1   | 0   | 0.0000 |
| 1- Green Jr. W/ 2- Williams J/ 12- Jasper Z/ 22- Flanigan A/ 44- Cardwell D/ | 1          | 05:32   | 1           | 05:00    | 00:32         | 0-0   | 0          | 0   | 0   | 0   | 0   | 0.0000 |
| 2- Williams J/ 3- Donaldson T/ 12- Jasper Z/ 22- Flanigan A/ 44- Cardwell D/ | 1          | 05:00   | 1           | 04:05    | 00:55         | 3-0   | 3          | 1   | 0   | 0   | 0   | 3.0000 |
| 1- Green Jr. W/ 2- Williams J/ 4- Broome J/ 12- Jasper Z/ 22- Flanigan A/    | 1          | 04:05   | 1           | 03:57    | 00:08         | 0-0   | 0          | 0   | 0   | 1   | 0   | 0.0000 |
| 0- Johnson K/ 1- Green Jr. W/ 2- Williams J/ 22- Flanigan A/ 44- Cardwell D/ | 1          | 03:57   | 1           | 01:09    | 02:48         | 7-4   | 3          | 3   | 1   | 0   | 0   | 2.3333 |
| 0- Johnson K/ 1- Green Jr. W/ 2- Williams J/ 4- Broome J/ 22- Flanigan A/    | 1          | 01:09   | 1           | 00:45    | 00:24         | 0-1   | -1         | 1   | 0   | 0   | 0   | 0.0000 |
| 0- Johnson K/ 1- Green Jr. W/ 2- Williams J/ 24- Berman L/ 44- Cardwell D/   | 1          | 00:45   | 2           | 20:00    | 00:45         | 2-3   | -1         | 0   | 0   | 0   | 1   | 2.0000 |
| 1- Green Jr. W/ 2- Williams J/ 4- Broome J/ 12- Jasper Z/ 22- Flanigan A/    | 2          | 20:00   | 2           | 14:39    | 05:21         | 7-14  | -7         | 2   | 2   | 1   | 1   | 0.7778 |
| 0- Johnson K/ 1- Green Jr. W/ 2- Williams J/ 4- Broome J/ 22- Flanigan A/    | 2          | 14:39   | 2           | 13:19    | 01:20         | 5-0   | 5          | 1   | 2   | 0   | 2   | 1.6667 |
| 0- Johnson K/ 1- Green Jr. W/ 2- Williams J/ 4- Broome J/ 24- Berman L/      | 2          | 13:19   | 2           | 11:16    | 02:03         | 5-2   | 3          | 1   | 1   | 1   | 0   | 1.6667 |
| 0- Johnson K/ 1- Green Jr. W/ 4- Broome J/ 21- Traore Y/ 24- Berman L/       | 2          | 11:16   | 2           | 09:54    | 01:22         | 5-2   | 3          | 0   | 0   | 0   | 0   | 2.0492 |
| 0- Johnson K/ 1- Green Jr. W/ 21- Traore Y/ 24- Berman L/ 44- Cardwell D/    | 2          | 09:54   | 2           | 08:26    | 01:28         | 0-3   | -3         | 1   | 0   | 0   | 0   | 0.0000 |
| 0- Johnson K/ 1- Green Jr. W/ 2- Williams J/ 24- Berman L/ 44- Cardwell D/   | 2          | 08:26   | 2           | 08:02    | 00:24         | 2-0   | 2          | 2   | 0   | 0   | 0   | 2.0000 |
| 0- Johnson K/ 2- Williams J/ 3- Donaldson T/ 24- Berman L/ 44- Cardwell D/   | 2          | 08:02   | 2           | 07:24    | 00:38         | 3-0   | 3          | 0   | 1   | 0   | 1   | 2.0833 |
| 2- Williams J/ 3- Donaldson T/ 12- Jasper Z/ 22- Flanigan A/ 44- Cardwell D/ | 2          | 07:24   | 2           | 07:19    | 00:05         | 0-0   | 0          | 0   | 0   | 0   | 0   | 0.0000 |
| 2- Williams J/ 3- Donaldson T/ 12- Jasper Z/ 24- Berman L/ 44- Cardwell D/   | 2          | 07:19   | 2           | 05:50    | 01:29         | 2-2   | 0          | 2   | 0   | 0   | 0   | 1.0000 |
| 1- Green Jr. W/ 2- Williams J/ 12- Jasper Z/ 24- Berman L/ 44- Cardwell D/   | 2          | 05:50   | 2           | 04:31    | 01:19         | 2-0   | 2          | 3   | 0   | 1   | 0   | 1.0000 |
| 1- Green Jr. W/ 2- Williams J/ 4- Broome J/ 12- Jasper Z/ 24- Berman L/      | 2          | 04:31   | 2           | 03:33    | 00:58         | 0-0   | 0          | 1   | 0   | 0   | 0   | 0.0000 |
| 0- Johnson K/ 2- Williams J/ 3- Donaldson T/ 4- Broome J/ 22- Flanigan A/    | 2          | 03:33   | 2           | 01:59    | 01:34         | 0-0   | 0          | 3   | 1   | 0   | 0   | 0.0000 |
| 0- Johnson K/ 2- Williams J/ 3- Donaldson T/ 4- Broome J/ 24- Berman L/      | 2          | 01:59   | 2           | 01:16    | 00:43         | 1-4   | -3         | 0   | 0   | 0   | 0   | 0.6944 |
| 0- Johnson K/ 3- Donaldson T/ 4- Broome J/ 21- Traore Y/ 24- Berman L/       | 2          | 01:16   | 2           | 01:16    | 00:00         | 0-0   | 0          | 0   | 0   | 0   | 0   | 0.0000 |
| 0- Johnson K/ 3- Donaldson T/ 21- Traore Y/ 24- Berman L/ 44- Cardwell D/    | 2          | 01:16   | 2           | 00:00    | 01:16         | 3-1   | 2          | 3   | 0   | 1   | 0   | 1.2295 |



**Auburn at LSU**

01/18/23 Maravich Assembly Center, Baton Rouge  
2022-23 Men's Basketball

**Game Time:** 6:00 PM  
**Game Duration:** 1:58  
**Attendance:** 9,967

**Officials:** Doug Shows, Steven Anderson, Courtney Green

**LSU**

| Lineup   | Quarter On | Time On | Quarter Off | Time Off | Time on Court | Score | Score Diff | Reb | Stl | Tov | Ass | PPP    |
|--|------------|---------|-------------|----------|---------------|-------|------------|-----|-----|-----|-----|--------|
| 1- Hayes C/ 11- Williams J/ 12- Williams K/ 20- Fountain D/ 44- Miller A/        | 1          | 20:00   | 1           | 16:01    | 03:59         | 5-10  | -5         | 3   | 1   | 0   | 1   | 1.0000 |
| 0- Hannibal T/ 1- Hayes C/ 12- Williams K/ 20- Fountain D/ 44- Miller A/         | 1          | 16:01   | 1           | 14:41    | 01:20         | 0-1   | -1         | 1   | 0   | 0   | 0   | 0.0000 |
| 0- Hannibal T/ 1- Hayes C/ 4- Coleman K/ 12- Williams K/ 44- Miller A/           | 1          | 14:41   | 1           | 12:59    | 01:42         | 0-0   | 0          | 2   | 0   | 0   | 0   | 0.0000 |
| 0- Hannibal T/ 4- Coleman K/ 12- Williams K/ 15- Ward T/ 44- Miller A/           | 1          | 12:59   | 1           | 12:27    | 00:32         | 0-0   | 0          | 1   | 0   | 0   | 0   | 0.0000 |
| 0- Hannibal T/ 4- Coleman K/ 13- Reed J/ 15- Ward T/ 44- Miller A/               | 1          | 12:27   | 1           | 11:31    | 00:56         | 1-3   | -2         | 0   | 0   | 0   | 0   | 0.6944 |
| 0- Hannibal T/ 12- Williams K/ 13- Reed J/ 15- Ward T/ 44- Miller A/             | 1          | 11:31   | 1           | 11:12    | 00:19         | 0-2   | -2         | 0   | 0   | 0   | 0   | 0.0000 |
| 0- Hannibal T/ 1- Hayes C/ 12- Williams K/ 13- Reed J/ 44- Miller A/             | 1          | 11:12   | 1           | 10:22    | 00:50         | 2-0   | 2          | 1   | 1   | 0   | 0   | 1.0638 |
| 1- Hayes C/ 11- Williams J/ 12- Williams K/ 13- Reed J/ 44- Miller A/            | 1          | 10:22   | 1           | 08:51    | 01:31         | 2-0   | 2          | 2   | 0   | 0   | 0   | 0.6667 |
| 1- Hayes C/ 11- Williams J/ 12- Williams K/ 20- Fountain D/ 44- Miller A/        | 1          | 08:51   | 1           | 06:01    | 02:50         | 3-4   | -1         | 1   | 0   | 1   | 1   | 0.7500 |
| 0- Hannibal T/ 1- Hayes C/ 12- Williams K/ 20- Fountain D/ 44- Miller A/         | 1          | 06:01   | 1           | 05:00    | 01:01         | 0-0   | 0          | 1   | 0   | 0   | 0   | 0.0000 |
| 0- Hannibal T/ 11- Williams J/ 12- Williams K/ 20- Fountain D/ 44- Miller A/     | 1          | 05:00   | 1           | 04:05    | 00:55         | 0-3   | -3         | 0   | 0   | 1   | 0   | 0.0000 |
| 0- Hannibal T/ 11- Williams J/ 12- Williams K/ 34- Phillips Jr. S/ 44- Miller A/ | 1          | 04:05   | 1           | 01:09    | 02:56         | 4-7   | -3         | 1   | 0   | 1   | 1   | 1.0000 |
| 0- Hannibal T/ 1- Hayes C/ 12- Williams K/ 20- Fountain D/ 44- Miller A/         | 1          | 01:09   | 2           | 20:00    | 01:09         | 4-2   | 2          | 1   | 0   | 0   | 0   | 1.7241 |
| 1- Hayes C/ 11- Williams J/ 12- Williams K/ 20- Fountain D/ 44- Miller A/        | 2          | 20:00   | 2           | 13:20    | 06:40         | 14-12 | 2          | 8   | 1   | 4   | 3   | 1.1667 |
| 0- Hannibal T/ 11- Williams J/ 12- Williams K/ 20- Fountain D/ 44- Miller A/     | 2          | 13:20   | 2           | 10:04    | 03:16         | 4-10  | -6         | 0   | 1   | 2   | 0   | 0.8000 |
| 0- Hannibal T/ 11- Williams J/ 12- Williams K/ 13- Reed J/ 44- Miller A/         | 2          | 10:04   | 2           | 09:54    | 00:10         | 0-0   | 0          | 0   | 0   | 0   | 0   | 0.0000 |
| 0- Hannibal T/ 1- Hayes C/ 11- Williams J/ 12- Williams K/ 13- Reed J/           | 2          | 09:54   | 2           | 08:26    | 01:28         | 3-0   | 3          | 4   | 0   | 0   | 0   | 1.5957 |
| 0- Hannibal T/ 1- Hayes C/ 11- Williams J/ 13- Reed J/ 20- Fountain D/           | 2          | 08:26   | 2           | 08:02    | 00:24         | 0-2   | -2         | 0   | 0   | 0   | 0   | 0.0000 |
| 0- Hannibal T/ 1- Hayes C/ 13- Reed J/ 20- Fountain D/ 44- Miller A/             | 2          | 08:02   | 2           | 07:24    | 00:38         | 0-3   | -3         | 1   | 0   | 1   | 0   | 0.0000 |
| 1- Hayes C/ 11- Williams J/ 12- Williams K/ 20- Fountain D/ 44- Miller A/        | 2          | 07:24   | 2           | 05:50    | 01:34         | 2-2   | 0          | 2   | 0   | 0   | 1   | 0.6667 |
| 0- Hannibal T/ 1- Hayes C/ 11- Williams J/ 12- Williams K/ 44- Miller A/         | 2          | 05:50   | 2           | 04:31    | 01:19         | 0-2   | -2         | 0   | 0   | 0   | 0   | 0.0000 |
| 0- Hannibal T/ 11- Williams J/ 12- Williams K/ 20- Fountain D/ 44- Miller A/     | 2          | 04:31   | 2           | 02:30    | 02:01         | 0-0   | 0          | 5   | 0   | 1   | 0   | 0.0000 |
| 0- Hannibal T/ 4- Coleman K/ 11- Williams J/ 13- Reed J/ 44- Miller A/           | 2          | 02:30   | 2           | 01:34    | 00:56         | 3-0   | 3          | 4   | 0   | 0   | 0   | 1.2931 |
| 0- Hannibal T/ 4- Coleman K/ 11- Williams J/ 13- Reed J/ 15- Ward T/             | 2          | 01:34   | 2           | 00:00    | 01:34         | 2-4   | -2         | 0   | 1   | 0   | 0   | 0.6024 |



**Auburn at LSU**

01/18/23 Maravich Assembly Center, Baton Rouge  
2022-23 Men's Basketball

**Game Time:** 6:00 PM  
**Game Duration:** 1:58  
**Attendance:** 9,967

**Officials:** Doug Shows, Steven Anderson, Courtney Green

**Auburn**

| Lineup   | Time  | Score | Score Diff | Pts/Min | Reb | Stl | Tov | Ass | PPP    |
|--|-------|-------|------------|---------|-----|-----|-----|-----|--------|
| 1- Green Jr. W/ 2- Williams J/ 4- Broome J/ 12- Jasper Z/ 22- Flanigan A/    | 10:32 | 17-19 | -2         | 1.6139  | 7   | 2   | 4   | 3   | 0.9572 |
| 0- Johnson K/ 1- Green Jr. W/ 2- Williams J/ 22- Flanigan A/ 44- Cardwell D/ | 04:08 | 8-4   | 4          | 1.9355  | 6   | 1   | 0   | 0   | 1.8018 |
| 0- Johnson K/ 2- Williams J/ 3- Donaldson T/ 4- Broome J/ 24- Berman L/      | 03:23 | 3-8   | -5         | 0.8867  | 4   | 0   | 2   | 1   | 0.4032 |
| 1- Green Jr. W/ 2- Williams J/ 12- Jasper Z/ 22- Flanigan A/ 44- Cardwell D/ | 02:47 | 4-3   | 1          | 1.4371  | 2   | 0   | 1   | 2   | 1.3333 |
| 0- Johnson K/ 1- Green Jr. W/ 2- Williams J/ 4- Broome J/ 24- Berman L/      | 02:03 | 5-2   | 3          | 2.4390  | 1   | 1   | 1   | 0   | 1.6667 |
| 0- Johnson K/ 1- Green Jr. W/ 2- Williams J/ 4- Broome J/ 22- Flanigan A/    | 01:44 | 5-1   | 4          | 2.8846  | 2   | 2   | 0   | 2   | 1.2500 |
| 0- Johnson K/ 1- Green Jr. W/ 21- Traore Y/ 22- Flanigan A/ 44- Cardwell D/  | 01:42 | 0-0   | 0          | 0.0000  | 2   | 0   | 0   | 0   | 0.0000 |
| 0- Johnson K/ 3- Donaldson T/ 21- Traore Y/ 24- Berman L/ 44- Cardwell D/    | 01:39 | 3-1   | 2          | 1.8182  | 3   | 0   | 1   | 0   | 1.0417 |
| 0- Johnson K/ 2- Williams J/ 3- Donaldson T/ 4- Broome J/ 22- Flanigan A/    | 01:34 | 0-0   | 0          | 0.0000  | 3   | 1   | 0   | 0   | 0.0000 |
| 2- Williams J/ 3- Donaldson T/ 12- Jasper Z/ 24- Berman L/ 44- Cardwell D/   | 01:29 | 2-2   | 0          | 1.3483  | 2   | 0   | 0   | 0   | 1.0000 |
| 0- Johnson K/ 1- Green Jr. W/ 21- Traore Y/ 24- Berman L/ 44- Cardwell D/    | 01:28 | 0-3   | -3         | 0.0000  | 1   | 0   | 0   | 0   | 0.0000 |
| 0- Johnson K/ 1- Green Jr. W/ 4- Broome J/ 21- Traore Y/ 24- Berman L/       | 01:22 | 5-2   | 3          | 3.6585  | 0   | 0   | 0   | 0   | 2.0492 |
| 1- Green Jr. W/ 2- Williams J/ 12- Jasper Z/ 24- Berman L/ 44- Cardwell D/   | 01:19 | 2-0   | 2          | 1.5190  | 3   | 0   | 1   | 0   | 1.0000 |
| 0- Johnson K/ 1- Green Jr. W/ 2- Williams J/ 24- Berman L/ 44- Cardwell D/   | 01:09 | 4-3   | 1          | 3.4783  | 2   | 0   | 0   | 1   | 2.0000 |
| 0- Johnson K/ 3- Donaldson T/ 4- Broome J/ 21- Traore Y/ 24- Berman L/       | 01:05 | 3-1   | 2          | 2.7692  | 1   | 0   | 0   | 1   | 3.0000 |
| 2- Williams J/ 3- Donaldson T/ 12- Jasper Z/ 22- Flanigan A/ 44- Cardwell D/ | 01:00 | 3-0   | 3          | 3.0000  | 1   | 0   | 0   | 0   | 3.0000 |
| 1- Green Jr. W/ 2- Williams J/ 4- Broome J/ 12- Jasper Z/ 24- Berman L/      | 00:58 | 0-0   | 0          | 0.0000  | 1   | 0   | 0   | 0   | 0.0000 |
| 0- Johnson K/ 2- Williams J/ 3- Donaldson T/ 24- Berman L/ 44- Cardwell D/   | 00:38 | 3-0   | 3          | 4.7368  | 0   | 1   | 0   | 1   | 2.0833 |



**Auburn at LSU**

01/18/23 Maravich Assembly Center, Baton Rouge  
2022-23 Men's Basketball

**Game Time:** 6:00 PM  
**Game Duration:** 1:58  
**Attendance:** 9,967

**Officials:** Doug Shows, Steven Anderson, Courtney Green

**LSU**

| Lineup   | Time  | Score | Score Diff | Pts/Min | Reb | Stl | Tov | Ass | PPP    |
|--|-------|-------|------------|---------|-----|-----|-----|-----|--------|
| 1- Hayes C/ 11- Williams J/ 12- Williams K/ 20- Fountain D/ 44- Miller A/        | 15:03 | 24-28 | -4         | 1.5947  | 14  | 2   | 5   | 6   | 1.0000 |
| 0- Hannibal T/ 11- Williams J/ 12- Williams K/ 20- Fountain D/ 44- Miller A/     | 06:12 | 4-13  | -9         | 0.6452  | 5   | 1   | 4   | 0   | 0.4000 |
| 0- Hannibal T/ 1- Hayes C/ 12- Williams K/ 20- Fountain D/ 44- Miller A/         | 03:30 | 4-3   | 1          | 1.1429  | 3   | 0   | 0   | 0   | 0.7519 |
| 0- Hannibal T/ 11- Williams J/ 12- Williams K/ 34- Phillips Jr. S/ 44- Miller A/ | 02:56 | 4-7   | -3         | 1.3636  | 1   | 0   | 1   | 1   | 1.0000 |
| 0- Hannibal T/ 1- Hayes C/ 4- Coleman K/ 12- Williams K/ 44- Miller A/           | 01:42 | 0-0   | 0          | 0.0000  | 2   | 0   | 0   | 0   | 0.0000 |
| 0- Hannibal T/ 4- Coleman K/ 11- Williams J/ 13- Reed J/ 15- Ward T/             | 01:34 | 2-4   | -2         | 1.2766  | 0   | 1   | 0   | 0   | 0.6024 |
| 1- Hayes C/ 11- Williams J/ 12- Williams K/ 13- Reed J/ 44- Miller A/            | 01:31 | 2-0   | 2          | 1.3187  | 2   | 0   | 0   | 0   | 0.6667 |
| 0- Hannibal T/ 1- Hayes C/ 11- Williams J/ 12- Williams K/ 13- Reed J/           | 01:28 | 3-0   | 3          | 2.0455  | 4   | 0   | 0   | 0   | 1.5957 |
| 0- Hannibal T/ 1- Hayes C/ 11- Williams J/ 12- Williams K/ 44- Miller A/         | 01:19 | 0-2   | -2         | 0.0000  | 0   | 0   | 0   | 0   | 0.0000 |
| 0- Hannibal T/ 4- Coleman K/ 13- Reed J/ 15- Ward T/ 44- Miller A/               | 00:56 | 1-3   | -2         | 1.0714  | 0   | 0   | 0   | 0   | 0.6944 |
| 0- Hannibal T/ 4- Coleman K/ 11- Williams J/ 13- Reed J/ 44- Miller A/           | 00:56 | 3-0   | 3          | 3.2143  | 4   | 0   | 0   | 0   | 1.2931 |
| 0- Hannibal T/ 1- Hayes C/ 12- Williams K/ 13- Reed J/ 44- Miller A/             | 00:50 | 2-0   | 2          | 2.4000  | 1   | 1   | 0   | 0   | 1.0638 |
| 0- Hannibal T/ 1- Hayes C/ 13- Reed J/ 20- Fountain D/ 44- Miller A/             | 00:38 | 0-3   | -3         | 0.0000  | 1   | 0   | 1   | 0   | 0.0000 |
| 0- Hannibal T/ 4- Coleman K/ 12- Williams K/ 15- Ward T/ 44- Miller A/           | 00:32 | 0-0   | 0          | 0.0000  | 1   | 0   | 0   | 0   | 0.0000 |
| 0- Hannibal T/ 1- Hayes C/ 11- Williams J/ 13- Reed J/ 20- Fountain D/           | 00:24 | 0-2   | -2         | 0.0000  | 0   | 0   | 0   | 0   | 0.0000 |
| 0- Hannibal T/ 12- Williams K/ 13- Reed J/ 15- Ward T/ 44- Miller A/             | 00:19 | 0-2   | -2         | 0.0000  | 0   | 0   | 0   | 0   | 0.0000 |
| 0- Hannibal T/ 11- Williams J/ 12- Williams K/ 13- Reed J/ 44- Miller A/         | 00:10 | 0-0   | 0          | 0.0000  | 0   | 0   | 0   | 0   | 0.0000 |