



Florida at LSU

01/10/23 Maravich Assembly Center, Baton Rouge  
2022-23 Men's Basketball

Game Time: 6:00 PM  
Game Duration: 2:06  
Attendance: 9,159

Officials: Terry Oglesby, Tony Greene, Todd Austin

Florida - 67

Record: 9-7 (2-2)

NO.	Name	F	Min	FG	3P	FT	Rebounds			Fouls		TP	AS	TO	ST	Blocks		+/-
				M-A	M-A	M-A	OR	DR	TOT	PF	FD					BS	BA	
3	Alex Fudge	F	22:18	3-7	0-3	1-4	1	2	3	3	4	7	1	0	1	0	0	-3
12	Colin Castleton	F	35:39	3-6	0-0	12-15	2	5	7	2	10	18	2	3	0	5	0	16
2	Trey Bonham	G	11:35	1-3	1-3	0-2	0	1	1	0	1	3	1	0	1	0	0	-4
5	Will Richard	G	24:25	1-3	0-2	3-3	0	5	5	5	2	5	1	1	3	2	0	14
11	Kyle Lofton	G	31:36	3-4	0-1	2-2	0	2	2	2	1	8	0	2	2	1	0	2
14	Kowacie Reeves		21:21	3-12	1-8	4-4	2	1	3	1	2	11	1	2	0	0	0	2
0	Myreon Jones		30:05	2-6	2-5	2-2	0	3	3	0	1	8	3	0	2	0	0	12
24	Riley Kugel		18:40	3-7	1-3	0-0	1	5	6	2	0	7	1	2	1	0	0	21
33	Jason Jitoboh		04:21	0-0	0-0	0-0	0	0	0	0	0	0	0	0	0	0	0	-5
Team							2	2	4			0		0				
<b>Totals</b>				19-48	5-25	24-32	8	26	34	15	21	67	10	10	10	8	0	11

Shooting By Period		
1 <sup>st</sup> FG%	8-28	28.6%
3PT%	3-17	17.6%
FT%	6-10	60%
2 <sup>nd</sup> FG%	11-20	55.0%
3PT%	2-8	25.0%
FT%	18-22	81.8%
GM FG%	19-48	39.6%
3PT%	5-25	20.0%
FT%	24-32	75.0%

Dead Ball Rebounds: 4, 0

Technical Fouls::NONE

LSU - 56

Record: 12-4 (1-3)

NO.	Name	F	Min	FG	3P	FT	Rebounds			Fouls		TP	AS	TO	ST	Blocks		+/-
				M-A	M-A	M-A	OR	DR	TOT	PF	FD					BS	BA	
12	KJ Williams	F	34:24	8-20	1-9	6-8	4	3	7	2	7	23	0	1	0	0	2	-15
20	Derek Fountain	F	29:48	3-4	0-0	2-2	1	5	6	5	3	8	2	3	1	0	1	8
0	Trae Hannibal	G	28:14	1-6	0-0	2-2	5	7	12	2	2	4	3	4	2	0	4	-14
3	Justice Hill	G	30:13	1-9	1-7	0-0	0	5	5	2	1	3	6	3	1	0	0	-5
44	Adam Miller	G	33:36	2-12	1-8	3-4	0	3	3	3	2	8	0	3	1	0	1	-13
11	Justice Williams		13:22	0-1	0-1	0-0	1	0	1	2	0	0	1	1	0	0	0	-6
13	Jalen Reed		02:55	0-0	0-0	0-0	0	0	0	3	0	0	0	0	0	0	0	-5
15	Tyrell Ward		16:37	2-4	2-3	0-0	0	1	1	0	0	6	0	0	0	0	0	2
4	Kendal Coleman		10:51	2-3	0-0	0-0	1	0	1	2	0	4	0	0	0	0	0	-7
Team							3	1	4			0		1				
<b>Totals</b>				19-59	5-28	13-16	15	25	40	21	15	56	12	16	5	0	8	-11

Shooting By Period		
1 <sup>st</sup> FG%	10-28	35.7%
3PT%	5-17	29.4%
FT%	3-4	75%
2 <sup>nd</sup> FG%	9-31	29.0%
3PT%	0-11	0.0%
FT%	10-12	83.3%
GM FG%	19-59	32.2%
3PT%	5-28	17.9%
FT%	13-16	81.3%

Dead Ball Rebounds: 2, 0

Technical Fouls::NONE

	FLA	LSU
Biggest lead	11 (2 <sup>nd</sup> 3:05)	8 (1 <sup>st</sup> 6:49)
Best Scoring Run	8 (1 <sup>st</sup> 14:19)	7 (1 <sup>st</sup> 16:40)
Lead Changes	3	
Times Tied	8	
Time with Lead	14:23	21:03

	FLA	LSU
Points from		
Turnovers	23	5
Paint	28	24
Second Chance	10	19
Fast Breaks	16	1
Bench	26	10

	Period by Period Scoring		
	1st	2nd	TOT
FLA	25	42	67
LSU	28	28	56



**Officials:** Terry Oglesby, Tony Greene, Todd Austin

**Period 1**

**Quarter Starters:**

<b>LSU</b>	0 Hannibal T	3 Hill J	12 Williams K	20 Fountain D	44 Miller A
<b>FLA</b>	2 Bonham T	3 Fudge A	5 Richard W	11 Lofton K	12 Castleton C

Game Time	LSU	Score	Diff	FLA
20:00	20 FOUNTAIN D jumpball lost			12 CASTLETON C jumpball won
19:45				2 BONHAM T 3pt FG , jump shot missed
19:41	0 HANNIBAL T defensive rebound (1)			
19:36	44 MILLER A foul drawn (1)			3 FUDGE A foul shooting (1 - 1)
19:36	44 MILLER A free throw 1 - 2 made (1)	1-0	1	
19:36	44 MILLER A free throw 2 - 2 made (2)	2-0	2	
19:23	0 HANNIBAL T steal (1)			11 LOFTON K turnover bad pass (1)
19:22	0 HANNIBAL T foul drawn (1)			11 LOFTON K foul personal (1 - 2)
19:05	12 WILLIAMS K 3pt FG from turnover, jump shot missed			
19:02	0 HANNIBAL T offensive rebound (2)			
19:00	20 FOUNTAIN D 2pt FG from turnover second chance in the paint, layup made (2)	4-0	4	
19:00	0 HANNIBAL T assist (1)			
18:42				3 FUDGE A 3pt FG , jump shot missed
18:38	3 HILL J defensive rebound (1)			
18:20	0 HANNIBAL T 2pt FG outside the paint, jump shot missed			
18:17				11 LOFTON K defensive rebound (1)
17:57				5 RICHARD W 3pt FG , jump shot missed
17:53				12 CASTLETON C offensive rebound (1)
17:53				12 CASTLETON C turnover lost ball (1)
17:40	0 HANNIBAL T turnover bad pass (1)			5 RICHARD W steal (1)
17:27	3 HILL J steal (1)			12 CASTLETON C turnover bad pass (2)
17:22	44 MILLER A 3pt FG from turnover, jump shot missed			
17:19				5 RICHARD W defensive rebound (1)
17:10	3 HILL J foul shooting (1 - 1)			2 BONHAM T foul drawn (1)
17:10				2 BONHAM T free throw 1 - 2 missed
17:10				offensive dead ball rebound (1)
17:10				3 FUDGE A substitution out
17:10				14 REEVES K substitution in
17:10				2 BONHAM T free throw 2 - 2 missed
17:09	0 HANNIBAL T defensive rebound (3)			
16:47	0 HANNIBAL T substitution out			
16:47	11 WILLIAMS J substitution in			
16:40	12 WILLIAMS K 3pt FG , jump shot made (3)	7-0	7	
16:40	3 HILL J assist (1)			
16:39	3 HILL J foul drawn (1)			5 RICHARD W foul offensive (1 - 3)
16:39				5 RICHARD W turnover offensive (1)
16:38	12 WILLIAMS K 3pt FG from turnover, jump shot missed			
16:35	11 WILLIAMS J offensive rebound (1)			
16:32	12 WILLIAMS K turnover travel (1)			
16:21				14 REEVES K 3pt FG from turnover, jump shot missed
16:18	3 HILL J defensive rebound (2)			
16:12	3 HILL J 2pt FG in the paint, layup missed			



Official Basketball Play by Play - First Half  
**Florida at LSU**  
 01/10/23 Maravich Assembly Center, Baton Rouge  
 2022-23 Men's Basketball

**Game Time:** 6:00 PM  
**Game Duration:** 2:06  
**Attendance:** 9,159

**Officials:** Terry Oglesby, Tony Greene, Todd Austin

Game Time	LSU	Score	Diff	FLA
16:10				14 REEVES K defensive rebound (1)
15:48	11 WILLIAMS J foul personal (1 - 2)			12 CASTLETON C foul drawn (1)
15:48	Timeout media			
15:48	3 HILL J substitution out			
15:48	0 HANNIBAL T substitution in			
15:48				2 BONHAM T substitution out
15:48				11 LOFTON K substitution out
15:48				0 JONES M substitution in
15:48				24 KUGEL R substitution in
15:39				14 REEVES K 2pt FG in the paint, layup missed
15:39				14 REEVES K offensive rebound (2)
15:39	20 FOUNTAIN D foul shooting (1 - 3)			14 REEVES K foul drawn (1)
15:39		7-1	6	14 REEVES K free throw 1 - 2 made (1)
15:39		7-2	5	14 REEVES K free throw 2 - 2 made (2)
15:21	12 WILLIAMS K 3pt FG , jump shot missed			
15:17				24 KUGEL R defensive rebound (1)
15:04				5 RICHARD W 3pt FG , jump shot missed
15:00	20 FOUNTAIN D defensive rebound (1)			
14:53	11 WILLIAMS J turnover lost ball (1)			
14:53	20 FOUNTAIN D substitution out			
14:53	13 REED J substitution in			
14:38		7-5	2	14 REEVES K 3pt FG from turnover, jump shot made (5)
14:38				0 JONES M assist (1)
14:22	0 HANNIBAL T turnover lost ball (2)			5 RICHARD W steal (2)
14:19		7-7	0	5 RICHARD W 2pt FG fast break from turnover in the paint, layup made (2)
14:19	13 REED J foul shooting (1 - 4)			5 RICHARD W foul drawn (1)
14:19	11 WILLIAMS J substitution out			
14:19	3 HILL J substitution in			
14:19		7-8	-1	5 RICHARD W free throw fast break 1 - 1 made (3)
13:59	12 WILLIAMS K 2pt FG in the paint, hook shot made (5)	9-8	1	
13:46	44 MILLER A steal (1)			14 REEVES K turnover lost ball (1)
13:32	12 WILLIAMS K 2pt FG from turnover in the paint, layup made (7)	11-8	3	
13:32	0 HANNIBAL T assist (2)			
13:08				14 REEVES K 3pt FG , jump shot missed
13:05	0 HANNIBAL T defensive rebound (4)			
13:00	0 HANNIBAL T 2pt FG in the paint, layup blocked			
13:00				12 CASTLETON C block (1)
12:55				24 KUGEL R defensive rebound (2)
12:49	13 REED J foul personal (2 - 5)			12 CASTLETON C foul drawn (2)
12:49	15 WARD T substitution in			
12:49	44 MILLER A substitution out			
12:38		11-10	1	12 CASTLETON C 2pt FG in the paint, hook shot made (2)
12:12	3 HILL J 2pt FG in the paint, layup missed			
12:10				5 RICHARD W defensive rebound (2)
12:00				14 REEVES K 2pt FG outside the paint, jump shot missed
11:58				12 CASTLETON C offensive rebound (2)
11:58	13 REED J foul shooting (3 - 6)			12 CASTLETON C foul drawn (3)
11:58				12 CASTLETON C free throw 1 - 2 missed



Official Basketball Play by Play - First Half  
**Florida at LSU**  
 01/10/23 Maravich Assembly Center, Baton Rouge  
 2022-23 Men's Basketball

**Game Time:** 6:00 PM  
**Game Duration:** 2:06  
**Attendance:** 9,159

**Officials:** Terry Oglesby, Tony Greene, Todd Austin

Game Time	LSU	Score	Diff	FLA
11:58				offensive dead ball rebound (2)
11:58		<b>11-11</b>	<b>0</b>	12 CASTLETON C free throw 2 - 2 made (3)
11:58	Timeout media			
11:58	12 WILLIAMS K substitution out			
11:58	13 REED J substitution out			
11:58	4 COLEMAN K substitution in			
11:58	20 FOUNTAIN D substitution in			
11:58				5 RICHARD W substitution out
11:58				3 FUDGE A substitution in
11:58				12 CASTLETON C substitution out
11:58				33 JITOBOH J substitution in
11:39	15 WARD T 2pt FG in the paint, layup missed			
11:37	20 FOUNTAIN D offensive rebound (2)			
11:35	3 HILL J 3pt FG second chance, jump shot made (3)	<b>14-11</b>	<b>3</b>	
11:35	20 FOUNTAIN D assist (1)			
11:08		<b>14-14</b>	<b>0</b>	0 JONES M 3pt FG , jump shot made (3)
11:08				14 REEVES K assist (1)
10:46	3 HILL J 3pt FG , jump shot missed			
10:43	offensive rebound (10)			
10:43	0 HANNIBAL T substitution out			
10:43	44 MILLER A substitution in			
10:43				24 KUGEL R substitution out
10:43				11 LOFTON K substitution in
10:38	15 WARD T 3pt FG second chance, jump shot made (3)	<b>17-14</b>	<b>3</b>	
10:38	20 FOUNTAIN D assist (2)			
10:15				0 JONES M 3pt FG , jump shot missed
10:11	15 WARD T defensive rebound (1)			
10:04	44 MILLER A 2pt FG in the paint, layup made (4)	<b>19-14</b>	<b>5</b>	
09:45				14 REEVES K 3pt FG , jump shot missed
09:42	3 HILL J defensive rebound (3)			
09:23	3 HILL J turnover bad pass (1)			0 JONES M steal (1)
09:20		<b>19-16</b>	<b>3</b>	14 REEVES K 2pt FG fast break from turnover in the paint, dunk, made (7)
09:20				0 JONES M assist (2)
08:46	44 MILLER A 3pt FG , jump shot blocked			
08:46				11 LOFTON K block (1)
08:40				0 JONES M defensive rebound (1)
08:38				14 REEVES K 3pt FG , jump shot missed
08:34	3 HILL J defensive rebound (4)			
08:09	4 COLEMAN K 2pt FG in the paint, dunk, made (2)	<b>21-16</b>	<b>5</b>	
08:09	3 HILL J assist (2)			
07:39				14 REEVES K 3pt FG , jump shot missed
07:37				offensive rebound (11)
07:37	Timeout media			
07:37	3 HILL J substitution out			
07:37	4 COLEMAN K substitution out			
07:37	15 WARD T substitution out			
07:37	0 HANNIBAL T substitution in			
07:37	11 WILLIAMS J substitution in			



Official Basketball Play by Play - First Half  
**Florida at LSU**  
 01/10/23 Maravich Assembly Center, Baton Rouge  
 2022-23 Men's Basketball

**Game Time:** 6:00 PM  
**Game Duration:** 2:06  
**Attendance:** 9,159

**Officials:** Terry Oglesby, Tony Greene, Todd Austin

Game Time	LSU	Score	Diff	FLA
07:37	12 WILLIAMS K substitution in			
07:37				14 REEVES K substitution out
07:37				33 JITOBOH J substitution out
07:37				5 RICHARD W substitution in
07:37				12 CASTLETON C substitution in
07:35				3 FUDGE A 2pt FG second chance outside the paint, jump shot missed
07:32	0 HANNIBAL T defensive rebound (5)			
07:03	0 HANNIBAL T 2pt FG in the paint, layup blocked			
07:03				5 RICHARD W block (1)
06:59				3 FUDGE A defensive rebound (1)
06:58				0 JONES M 2pt FG in the paint, layup missed
06:55	12 WILLIAMS K defensive rebound (1)			
06:49	44 MILLER A 3pt FG , jump shot made (7)	<b>24-16</b>	<b>8</b>	
06:49	0 HANNIBAL T assist (3)			
06:29	12 WILLIAMS K foul personal (1 - 7)			12 CASTLETON C foul drawn (4)
06:29	20 FOUNTAIN D substitution out			
06:29	4 COLEMAN K substitution in			
06:29				0 JONES M substitution out
06:29				2 BONHAM T substitution in
06:29				12 CASTLETON C 1&1 free throw 1 missed
06:28	44 MILLER A defensive rebound (1)			
06:13	12 WILLIAMS K 3pt FG , jump shot missed			
06:09				defensive rebound (13)
05:51				3 FUDGE A 3pt FG , jump shot missed
05:46				offensive rebound (14)
05:41		<b>24-19</b>	<b>5</b>	2 BONHAM T 3pt FG second chance, jump shot made (3)
05:19	11 WILLIAMS J 3pt FG , jump shot missed			
05:15				defensive rebound (15)
05:15				3 FUDGE A substitution out
05:15				24 KUGEL R substitution in
04:52	4 COLEMAN K foul personal (1 - 8)			12 CASTLETON C foul drawn (5)
04:52	4 COLEMAN K substitution out			
04:52	20 FOUNTAIN D substitution in			
04:52		<b>24-20</b>	<b>4</b>	12 CASTLETON C 1&1 free throw 1 made (4)
04:52		<b>24-21</b>	<b>3</b>	12 CASTLETON C 1&1 free throw 2 made (5)
04:29	20 FOUNTAIN D foul drawn (1)			5 RICHARD W foul personal (2 - 4)
04:29	0 HANNIBAL T substitution out			
04:29	3 HILL J substitution in			
04:14	3 HILL J 3pt FG , jump shot missed			
04:11				2 BONHAM T defensive rebound (1)
03:56				24 KUGEL R 3pt FG , jump shot missed
03:53	20 FOUNTAIN D defensive rebound (3)			
03:45	44 MILLER A 3pt FG , jump shot missed			
03:42				24 KUGEL R defensive rebound (3)
03:36				24 KUGEL R 2pt FG in the paint, jump shot missed
03:33	44 MILLER A defensive rebound (2)			
03:30	44 MILLER A foul drawn (2)			24 KUGEL R foul shooting (1 - 5)
03:30				Timeout media



Official Basketball Play by Play - First Half  
**Florida at LSU**  
 01/10/23 Maravich Assembly Center, Baton Rouge  
 2022-23 Men's Basketball

**Game Time:** 6:00 PM  
**Game Duration:** 2:06  
**Attendance:** 9,159

**Officials:** Terry Oglesby, Tony Greene, Todd Austin

Game Time	LSU	Score	Diff	FLA
03:30	44 MILLER A free throw fast break 1 - 2 missed			
03:30	offensive dead ball rebound (1)			
03:30	44 MILLER A free throw fast break 2 - 2 made (8)	<b>25-21</b>	<b>4</b>	
03:10				2 BONHAM T 3pt FG , jump shot missed
03:04	20 FOUNTAIN D defensive rebound (4)			
02:42	44 MILLER A turnover bad pass (1)			5 RICHARD W steal (3)
02:29		<b>25-23</b>	<b>2</b>	11 LOFTON K 2pt FG from turnover in the paint, layup made (2)
01:58	3 HILL J turnover bad pass (2)			2 BONHAM T steal (1)
01:54		<b>25-25</b>	<b>0</b>	24 KUGEL R 2pt FG fast break from turnover in the paint, layup made (2)
01:54				2 BONHAM T assist (1)
01:53	11 WILLIAMS J substitution out			
01:53	44 MILLER A substitution out			
01:53	0 HANNIBAL T substitution in			
01:53	15 WARD T substitution in			
01:53				5 RICHARD W substitution out
01:53				24 KUGEL R substitution out
01:53				0 JONES M substitution in
01:53				14 REEVES K substitution in
01:32	3 HILL J 3pt FG , jump shot missed			
01:27				12 CASTLETON C defensive rebound (3)
01:08				12 CASTLETON C 2pt FG outside the paint, jump shot missed
01:03	0 HANNIBAL T defensive rebound (6)			
00:50	15 WARD T 3pt FG , jump shot made (6)	<b>28-25</b>	<b>3</b>	
00:50	3 HILL J assist (3)			
00:23				0 JONES M 3pt FG , jump shot missed
00:20	3 HILL J defensive rebound (5)			
00:13	Timeout 30 Sec			
00:13	0 HANNIBAL T substitution out			
00:13	44 MILLER A substitution in			
00:13				2 BONHAM T substitution out
00:13				14 REEVES K substitution out
00:13				3 FUDGE A substitution in
00:13				24 KUGEL R substitution in
00:04	12 WILLIAMS K 3pt FG , jump shot missed			
00:01				11 LOFTON K defensive rebound (2)
<b>END OF PERIOD</b>				
<b>LSU 28-25 FLA</b>				



**Florida at LSU**

01/10/23 Maravich Assembly Center, Baton Rouge  
2022-23 Men's Basketball

Game Time: 6:00 PM  
Game Duration: 2:06  
Attendance: 9,159

Officials: Terry Oglesby, Tony Greene, Todd Austin

**Florida - 25**

NO.	Name	F	Min	FG			Rebounds			Fouls		TP	AS	TO	ST	Blocks		+/-
				M-A	M-A	M-A	OR	DR	TOT	PF	FD					BS	BA	
3	Alex Fudge	F	09:46	0-3	0-2	0-0	0	1	1	1	0	0	0	0	0	0	0	-9
12	Colin Castleton	F	15:39	1-2	0-0	3-5	2	1	3	0	5	5	0	2	0	1	0	2
2	Trey Bonham	G	10:28	1-3	1-3	0-2	0	1	1	0	1	3	1	0	1	0	0	-2
5	Will Richard	G	13:46	1-3	0-2	1-1	0	2	2	2	1	3	0	1	3	1	0	5
11	Kyle Lofton	G	14:55	1-1	0-0	0-0	0	2	2	1	0	2	0	1	0	1	0	-10
14	Kowacie Reeves		11:13	2-9	1-6	2-2	1	1	2	0	1	7	1	1	0	0	0	-4
0	Myreon Jones		11:12	1-4	1-3	0-0	0	1	1	0	0	3	2	0	1	0	0	-4
24	Riley Kugel		08:40	1-3	0-1	0-0	0	3	3	1	0	2	0	0	0	0	0	12
33	Jason Jitoboh		04:21	0-0	0-0	0-0	0	0	0	0	0	0	0	0	0	0	0	-5
Team							2	2	4			0			0			
<b>Totals</b>				8-28	3-17	6-10	5	14	19	5	8	25	4	5	5	3	0	-3

Shooting By Period		
1st FG%	8-28	28.6%
3PT%	3-17	17.6%
FT%	6-10	60%
GM FG%	8-28	28.6%
3PT%	3-17	17.6%
FT%	6-10	60.0%

Dead Ball Rebounds: 2, 0

Technical Fouls::NONE

**LSU - 28**

NO.	Name	F	Min	FG			Rebounds			Fouls		TP	AS	TO	ST	Blocks		+/-
				M-A	M-A	M-A	OR	DR	TOT	PF	FD					BS	BA	
12	KJ Williams	F	15:39	3-8	1-6	0-0	0	1	1	1	0	7	0	1	0	0	0	-2
20	Derek Fountain	F	15:28	1-1	0-0	0-0	1	3	4	1	1	2	2	0	0	0	0	11
0	Trae Hannibal	G	13:06	0-3	0-0	0-0	1	5	6	0	1	0	3	2	1	0	2	-2
3	Justice Hill	G	15:23	1-6	1-4	0-0	0	5	5	1	1	3	3	2	1	0	0	12
44	Adam Miller	G	16:14	2-5	1-4	3-4	0	2	2	0	2	8	0	1	1	0	1	3
11	Justice Williams		08:12	0-1	0-1	0-0	1	0	1	1	0	0	0	1	0	0	0	-9
13	Jalen Reed		02:55	0-0	0-0	0-0	0	0	0	3	0	0	0	0	0	0	0	-5
15	Tyrell Ward		07:05	2-3	2-2	0-0	0	1	1	0	0	6	0	0	0	0	0	5
4	Kendal Coleman		05:58	1-1	0-0	0-0	0	0	0	1	0	2	0	0	0	0	0	2
Team							1	0	1			0			0			
<b>Totals</b>				10-28	5-17	3-4	4	17	21	8	5	28	8	7	3	0	3	3

Shooting By Period		
1st FG%	10-28	35.7%
3PT%	5-17	29.4%
FT%	3-4	75%
GM FG%	10-28	35.7%
3PT%	5-17	29.4%
FT%	3-4	75.0%

Dead Ball Rebounds: 1, 0

Technical Fouls::NONE

	FLA	LSU
Biggest lead	1 (1 <sup>st</sup> 14:19)	8 (1 <sup>st</sup> 6:49)
Best Scoring Run	8 (1 <sup>st</sup> 14:19)	7 (1 <sup>st</sup> 16:40)
Lead Changes	2	
Times Tied	4	
Time with Lead	00:20	17:20

	FLA	LSU
Points from		
Turnovers	12	4
Paint	10	10
Second Chance	6	8
Fast Breaks	7	1
Bench	12	8

	Period by Period Scoring		
	1st	2nd	TOT
FLA	25	42	67
LSU	28	28	56



**Period 2**

**Quarter Starters:**

<b>LSU</b>	0 Hannibal T	3 Hill J	12 Williams K	20 Fountain D	44 Miller A
<b>FLA</b>	2 Bonham T	3 Fudge A	5 Richard W	11 Lofton K	12 Castleton C

Game Time	LSU	Score	Diff	FLA
20:00	15 WARD T substitution out			
20:00	0 HANNIBAL T substitution in			
20:00				0 JONES M substitution out
20:00				24 KUGEL R substitution out
20:00				2 BONHAM T substitution in
20:00				5 RICHARD W substitution in
19:35	12 WILLIAMS K 2pt FG outside the paint, jump shot missed			
19:32	0 HANNIBAL T offensive rebound (7)			
19:28	3 HILL J 3pt FG second chance, jump shot missed			
19:24	12 WILLIAMS K offensive rebound (2)			
19:12	12 WILLIAMS K 2pt FG second chance in the paint, jump shot blocked			
19:12				12 CASTLETON C block (2)
19:07	0 HANNIBAL T offensive rebound (8)			
19:07	0 HANNIBAL T 2pt FG second chance in the paint, layup made (2)	<b>30-25</b>	<b>5</b>	
18:53	3 HILL J foul shooting (2 - 1)			3 FUDGE A foul drawn (1)
18:53				3 FUDGE A free throw 1 - 2 missed
18:53				offensive dead ball rebound (3)
18:53				2 BONHAM T substitution out
18:53				0 JONES M substitution in
18:53		<b>30-26</b>	<b>4</b>	3 FUDGE A free throw 2 - 2 made (1)
18:36	44 MILLER A 3pt FG , jump shot missed			
18:33				12 CASTLETON C defensive rebound (4)
18:23		<b>30-28</b>	<b>2</b>	3 FUDGE A 2pt FG in the paint, dunk, made (3)
18:23				12 CASTLETON C assist (1)
18:02	12 WILLIAMS K 2pt FG in the paint, jump shot missed			
17:59				5 RICHARD W defensive rebound (3)
17:56	44 MILLER A foul shooting (1 - 2)			5 RICHARD W foul drawn (2)
17:56		<b>30-29</b>	<b>1</b>	5 RICHARD W free throw fast break 1 - 2 made (4)
17:56		<b>30-30</b>	<b>0</b>	5 RICHARD W free throw fast break 2 - 2 made (5)
17:41	12 WILLIAMS K foul drawn (1)			5 RICHARD W foul personal (3 - 1)
17:41				5 RICHARD W substitution out
17:41				14 REEVES K substitution in
17:36	12 WILLIAMS K 3pt FG , jump shot missed			
17:34				0 JONES M defensive rebound (2)
17:22				12 CASTLETON C 2pt FG in the paint, dunk, missed
17:18				14 REEVES K offensive rebound (3)
17:18				14 REEVES K 3pt FG second chance, jump shot missed
17:14	12 WILLIAMS K defensive rebound (3)			
16:56	20 FOUNTAIN D 2pt FG in the paint, layup made (4)	<b>32-30</b>	<b>2</b>	
16:31		<b>32-32</b>	<b>0</b>	11 LOFTON K 2pt FG in the paint, layup made (4)
16:16	44 MILLER A 2pt FG outside the paint, jump shot missed			
16:13	0 HANNIBAL T offensive rebound (9)			





Game Time	LSU	Score	Diff	FLA
15:56	12 WILLIAMS K 2pt FG second chance outside the paint, jump shot made (9)	34-32	2	
15:56	3 HILL J assist (4)			
15:31		34-34	0	11 LOFTON K 2pt FG in the paint, layup made (6)
15:18	12 WILLIAMS K foul drawn (2)			11 LOFTON K foul personal (2 - 2)
15:18	Timeout media			
15:18	12 WILLIAMS K substitution out			
15:18	4 COLEMAN K substitution in			
15:16	4 COLEMAN K 2pt FG in the paint, dunk, made (4)	36-34	2	
15:16	3 HILL J assist (5)			
15:01				11 LOFTON K turnover lost ball (2)
14:53	20 FOUNTAIN D foul offensive (2 - 3)			3 FUDGE A foul drawn (2)
14:53	20 FOUNTAIN D turnover offensive (1)			
14:53				3 FUDGE A substitution out
14:53				24 KUGEL R substitution in
14:40	20 FOUNTAIN D steal (1)			24 KUGEL R turnover bad pass (1)
14:36	20 FOUNTAIN D turnover bad pass (2)			0 JONES M steal (2)
14:31				24 KUGEL R 2pt FG from turnover in the paint, layup missed
14:27				24 KUGEL R offensive rebound (4)
14:27		36-36	0	24 KUGEL R 2pt FG from turnover second chance in the paint, layup made (4)
14:11	4 COLEMAN K 2pt FG in the paint, layup missed			
14:08				12 CASTLETON C defensive rebound (5)
14:03	4 COLEMAN K foul shooting (2 - 4)			12 CASTLETON C foul drawn (6)
14:03		36-37	-1	12 CASTLETON C free throw fast break 1 - 2 made (6)
14:03	20 FOUNTAIN D substitution out			
14:03	12 WILLIAMS K substitution in			
14:03		36-38	-2	12 CASTLETON C free throw fast break 2 - 2 made (7)
13:47	44 MILLER A turnover lost ball (2)			24 KUGEL R steal (1)
13:42		36-41	-5	0 JONES M 3pt FG fast break from turnover, jump shot made (6)
13:42				24 KUGEL R assist (1)
13:38	Timeout 30 Sec			
13:38	44 MILLER A substitution out			
13:38	15 WARD T substitution in			
13:24	12 WILLIAMS K foul drawn (3)			14 REEVES K foul shooting (1 - 3)
13:24	12 WILLIAMS K free throw 1 - 2 made (10)	37-41	-4	
13:24	4 COLEMAN K substitution out			
13:24	20 FOUNTAIN D substitution in			
13:24	12 WILLIAMS K free throw 2 - 2 made (11)	38-41	-3	
13:07		38-43	-5	14 REEVES K 2pt FG in the paint, layup made (9)
13:07				12 CASTLETON C assist (2)
12:50	12 WILLIAMS K 2pt FG in the paint, layup blocked			
12:50				12 CASTLETON C block (3)
12:45				24 KUGEL R defensive rebound (5)
12:34	0 HANNIBAL T steal (2)			12 CASTLETON C turnover bad pass (3)
12:05	3 HILL J turnover bad pass (3)			
11:44				24 KUGEL R 3pt FG from turnover, jump shot missed
11:40	20 FOUNTAIN D defensive rebound (5)			
11:20	20 FOUNTAIN D 2pt FG outside the paint, jump shot made (6)	40-43	-3	
11:20	3 HILL J assist (6)			



**Florida at LSU**

01/10/23 Maravich Assembly Center, Baton Rouge  
2022-23 Men's Basketball

**Game Time:** 6:00 PM  
**Game Duration:** 2:06  
**Attendance:** 9,159

**Officials:** Terry Oglesby, Tony Greene, Todd Austin

Game Time	LSU	Score	Diff	FLA
11:00	0 HANNIBAL T foul shooting (1 - 5)			11 LOFTON K foul drawn (1)
11:00	Timeout media			
11:00	0 HANNIBAL T substitution out			
11:00	44 MILLER A substitution in			
11:00		<b>40-44</b>	<b>-4</b>	11 LOFTON K free throw 1 - 2 made (7)
11:00		<b>40-45</b>	<b>-5</b>	11 LOFTON K free throw 2 - 2 made (8)
11:00				11 LOFTON K substitution out
11:00				5 RICHARD W substitution in
10:44	12 WILLIAMS K 3pt FG , jump shot missed			
10:40				24 KUGEL R defensive rebound (6)
10:20		<b>40-48</b>	<b>-8</b>	24 KUGEL R 3pt FG , jump shot made (7)
10:20				0 JONES M assist (3)
10:02	20 FOUNTAIN D 2pt FG in the paint, layup blocked			
10:02				5 RICHARD W block (2)
10:02	offensive rebound (28)			
10:02	3 HILL J substitution out			
10:02	11 WILLIAMS J substitution in			
09:45	turnover shot clock (12)			
09:22				24 KUGEL R turnover out of bounds (2)
09:09	12 WILLIAMS K foul drawn (4)			24 KUGEL R foul shooting (2 - 4)
09:09	12 WILLIAMS K free throw 1 - 2 missed			
09:09	offensive dead ball rebound (2)			
09:09	12 WILLIAMS K free throw 2 - 2 made (12)	<b>41-48</b>	<b>-7</b>	
08:53				14 REEVES K 3pt FG , jump shot missed
08:51	12 WILLIAMS K defensive rebound (4)			
08:39	44 MILLER A 3pt FG , jump shot missed			
08:36				5 RICHARD W defensive rebound (4)
08:21				12 CASTLETON C 2pt FG in the paint, layup missed
08:18	20 FOUNTAIN D defensive rebound (6)			
08:11	44 MILLER A 2pt FG in the paint, layup missed			
08:07	12 WILLIAMS K offensive rebound (5)			
08:07	12 WILLIAMS K 2pt FG second chance in the paint, layup made (14)	<b>43-48</b>	<b>-5</b>	
07:41	12 WILLIAMS K foul shooting (2 - 6)			14 REEVES K foul drawn (2)
07:41	Timeout media			
07:41		<b>43-49</b>	<b>-6</b>	14 REEVES K free throw 1 - 2 made (10)
07:41		<b>43-50</b>	<b>-7</b>	14 REEVES K free throw 2 - 2 made (11)
07:41				14 REEVES K substitution out
07:41				11 LOFTON K substitution in
07:33	20 FOUNTAIN D foul drawn (2)			5 RICHARD W foul personal (4 - 5)
07:33				5 RICHARD W substitution out
07:33				3 FUDGE A substitution in
07:26	12 WILLIAMS K 2pt FG in the paint, layup made (16)	<b>45-50</b>	<b>-5</b>	
07:26	11 WILLIAMS J assist (1)			
07:26	12 WILLIAMS K foul drawn (5)			12 CASTLETON C foul shooting (1 - 6)
07:26	12 WILLIAMS K free throw 1 - 1 made (17)	<b>46-50</b>	<b>-4</b>	
07:03				0 JONES M 3pt FG , jump shot missed
07:00	defensive rebound (32)			
06:52	20 FOUNTAIN D foul offensive (3 - 7)			3 FUDGE A foul drawn (3)



**Florida at LSU**

**Officials:** Terry Oglesby, Tony Greene, Todd Austin

Game Time	LSU	Score	Diff	FLA
06:52	20 FOUNTAIN D turnover offensive (3)			
06:31				11 LOFTON K 3pt FG from turnover, jump shot missed
06:22				3 FUDGE A offensive rebound (2)
06:22		<b>46-52</b>	<b>-6</b>	3 FUDGE A 2pt FG from turnover second chance in the paint, layup made (5)
06:08	20 FOUNTAIN D foul drawn (3)			3 FUDGE A foul shooting (2 - 7)
06:08	20 FOUNTAIN D free throw 1 - 2 made (7)	<b>47-52</b>	<b>-5</b>	
06:08	15 WARD T substitution out			
06:08	0 HANNIBAL T substitution in			
06:08				24 KUGEL R substitution out
06:08				5 RICHARD W substitution in
06:08	20 FOUNTAIN D free throw 2 - 2 made (8)	<b>48-52</b>	<b>-4</b>	
05:47				3 FUDGE A 3pt FG , jump shot missed
05:43	0 HANNIBAL T defensive rebound (10)			
05:36	44 MILLER A 3pt FG , jump shot missed			
05:32				0 JONES M defensive rebound (3)
05:13	20 FOUNTAIN D foul shooting (4 - 8)			3 FUDGE A foul drawn (4)
05:13				3 FUDGE A free throw 1 - 2 missed
05:13				offensive dead ball rebound (4)
05:13	20 FOUNTAIN D substitution out			
05:13	4 COLEMAN K substitution in			
05:13				3 FUDGE A free throw 2 - 2 missed
05:12	0 HANNIBAL T defensive rebound (11)			
04:55	0 HANNIBAL T turnover lost ball (3)			11 LOFTON K steal (1)
04:52	11 WILLIAMS J foul shooting (2 - 9)			0 JONES M foul drawn (1)
04:52		<b>48-53</b>	<b>-5</b>	0 JONES M free throw fast break 1 - 2 made (7)
04:52	11 WILLIAMS J substitution out			
04:52	3 HILL J substitution in			
04:52		<b>48-54</b>	<b>-6</b>	0 JONES M free throw fast break 2 - 2 made (8)
04:52				Timeout 30 Sec
04:38	12 WILLIAMS K foul drawn (6)			12 CASTLETON C foul personal (2 - 8)
04:38	4 COLEMAN K substitution out			
04:38	20 FOUNTAIN D substitution in			
04:38	12 WILLIAMS K 1&1 free throw 1 made (18)	<b>49-54</b>	<b>-5</b>	
04:38	12 WILLIAMS K 1&1 free throw 2 missed			
04:36				12 CASTLETON C defensive rebound (6)
04:26	20 FOUNTAIN D foul personal (5 - 10)			12 CASTLETON C foul drawn (7)
04:26	20 FOUNTAIN D substitution out			
04:26	4 COLEMAN K substitution in			
04:26		<b>49-55</b>	<b>-6</b>	12 CASTLETON C free throw 1 - 2 made (8)
04:26		<b>49-56</b>	<b>-7</b>	12 CASTLETON C free throw 2 - 2 made (9)
04:05	44 MILLER A 3pt FG , jump shot missed			
04:01				12 CASTLETON C defensive rebound (7)
03:56		<b>49-58</b>	<b>-9</b>	3 FUDGE A 2pt FG in the paint, dunk, made (7)
03:56				5 RICHARD W assist (1)
03:47	Timeout media			
03:31	3 HILL J 3pt FG , jump shot missed			
03:27				5 RICHARD W defensive rebound (5)
03:05		<b>49-60</b>	<b>-11</b>	12 CASTLETON C 2pt FG in the paint, layup made (11)



**Florida at LSU**

**Officials:** Terry Oglesby, Tony Greene, Todd Austin

Game Time	LSU	Score	Diff	FLA
03:05				3 FUDGE A assist (1)
02:56	12 WILLIAMS K 3pt FG , jump shot missed			
02:51	4 COLEMAN K offensive rebound (1)			
02:51	Timeout 30 Sec			
02:43	0 HANNIBAL T 2pt FG second chance in the paint, layup blocked			
02:43				12 CASTLETON C block (4)
02:38	12 WILLIAMS K offensive rebound (6)			
02:38	12 WILLIAMS K 2pt FG second chance in the paint, layup made (20)	<b>51-60</b>	<b>-9</b>	
02:29	0 HANNIBAL T foul personal (2 - 11)			12 CASTLETON C foul drawn (8)
02:29		<b>51-61</b>	<b>-10</b>	12 CASTLETON C free throw 1 - 2 made (12)
02:29				12 CASTLETON C free throw 2 - 2 missed
02:28	44 MILLER A defensive rebound (3)			
02:04	44 MILLER A 2pt FG outside the paint, jump shot missed			
02:02	12 WILLIAMS K offensive rebound (7)			
02:02	12 WILLIAMS K 2pt FG second chance in the paint, layup made (22)	<b>53-61</b>	<b>-8</b>	
02:02	12 WILLIAMS K foul drawn (7)			3 FUDGE A foul shooting (3 - 9)
02:02	4 COLEMAN K substitution out			
02:02	15 WARD T substitution in			
02:02				3 FUDGE A substitution out
02:02				14 REEVES K substitution in
02:02	12 WILLIAMS K free throw 1 - 1 made (23)	<b>54-61</b>	<b>-7</b>	
01:54				14 REEVES K turnover bad pass (2)
01:54				14 REEVES K substitution out
01:54				3 FUDGE A substitution in
01:42	3 HILL J 3pt FG from turnover, jump shot missed			
01:38				3 FUDGE A defensive rebound (3)
01:25		<b>54-63</b>	<b>-9</b>	12 CASTLETON C 2pt FG in the paint, layup made (14)
01:15	0 HANNIBAL T foul drawn (2)			5 RICHARD W foul personal (5 - 10)
01:15				5 RICHARD W substitution out
01:15				24 KUGEL R substitution in
01:15	0 HANNIBAL T free throw 1 - 2 made (3)	<b>55-63</b>	<b>-8</b>	
01:15	0 HANNIBAL T free throw 2 - 2 made (4)	<b>56-63</b>	<b>-7</b>	
01:15				Timeout 60 Sec
01:02	44 MILLER A foul personal (2 - 12)			12 CASTLETON C foul drawn (9)
01:02		<b>56-64</b>	<b>-8</b>	12 CASTLETON C free throw 1 - 2 made (15)
01:02		<b>56-65</b>	<b>-9</b>	12 CASTLETON C free throw 2 - 2 made (16)
00:56	0 HANNIBAL T 2pt FG in the paint, layup blocked			
00:56				12 CASTLETON C block (5)
00:56	offensive rebound (39)			
00:52	44 MILLER A turnover lost ball (3)			11 LOFTON K steal (2)
00:43	44 MILLER A foul personal (3 - 13)			12 CASTLETON C foul drawn (10)
00:43		<b>56-66</b>	<b>-10</b>	12 CASTLETON C free throw 1 - 2 made (17)
00:43		<b>56-67</b>	<b>-11</b>	12 CASTLETON C free throw 2 - 2 made (18)
00:36	15 WARD T 3pt FG , jump shot missed			
00:31	0 HANNIBAL T offensive rebound (12)			
00:30	0 HANNIBAL T turnover lost ball (4)			3 FUDGE A steal (1)
<b>END OF GAME</b>				



Official Basketball Play by Play - Second Half

### Florida at LSU

01/10/23 Maravich Assembly Center, Baton Rouge  
2022-23 Men's Basketball

**Game Time:** 6:00 PM

**Game Duration:** 2:06

**Attendance:** 9,159

**Officials:** Terry Oglesby, Tony Greene, Todd Austin

Game Time	LSU	Score	Diff	FLA
LSU 56-67 FLA				



Florida at LSU

01/10/23 Maravich Assembly Center, Baton Rouge  
2022-23 Men's Basketball

Game Time: 6:00 PM  
Game Duration: 2:06  
Attendance: 9,159

Officials: Terry Oglesby, Tony Greene, Todd Austin

Florida - 42

NO.	Name	F	Min	FG			Rebounds			Fouls		TP	AS	TO	ST	Blocks		+/-
				M-A	3P	FT	OR	DR	TOT	PF	FD					BS	BA	
3	Alex Fudge	F	12:32	3-4	0-1	1-4	1	1	2	2	4	7	1	0	1	0	0	6
12	Colin Castleton	F	20:00	2-4	0-0	9-10	0	4	4	2	5	13	2	1	0	4	0	14
2	Trey Bonham	G	01:07	0-0	0-0	0-0	0	0	0	0	0	0	0	0	0	0	-2	
5	Will Richard	G	10:39	0-0	0-0	2-2	0	3	3	3	1	2	1	0	0	1	9	
11	Kyle Lofton	G	16:41	2-3	0-1	2-2	0	0	0	1	1	6	0	1	2	0	12	
0	Myreon Jones		18:53	1-2	1-2	2-2	0	2	2	0	1	5	1	0	1	0	16	
14	Kowacie Reeves		10:08	1-3	0-2	2-2	1	0	1	1	1	4	0	1	0	0	6	
24	Riley Kugel		10:00	2-4	1-2	0-0	1	2	3	1	0	5	1	2	1	0	9	
Team							0	0	0			0						
<b>Totals</b>				11-20	2-8	18-22	3	12	15	10	13	42	6	5	5	5	0	14

Shooting By Period		
2 <sup>nd</sup> FG%	11-20	55.0%
3PT%	2-8	25.0%
FT%	18-22	81.8%
GM FG%	11-20	55.0%
3PT%	2-8	25.0%
FT%	18-22	81.8%

Dead Ball Rebounds: 2, 0

Technical Fouls::NONE

LSU - 28

NO.	Name	F	Min	FG			Rebounds			Fouls		TP	AS	TO	ST	Blocks		+/-
				M-A	3P	FT	OR	DR	TOT	PF	FD					BS	BA	
12	KJ Williams	F	18:45	5-12	0-3	6-8	4	2	6	1	7	16	0	0	0	0	2	-13
20	Derek Fountain	F	14:20	2-3	0-0	2-2	0	2	2	4	2	6	0	3	1	0	1	-3
0	Trae Hannibal	G	15:08	1-3	0-0	2-2	4	2	6	2	1	4	0	2	1	0	2	-12
3	Justice Hill	G	14:50	0-3	0-3	0-0	0	0	0	1	0	0	3	1	0	0	0	-17
44	Adam Miller	G	17:22	0-7	0-4	0-0	0	1	1	3	0	0	0	2	0	0	0	-16
4	Kendal Coleman		04:53	1-2	0-0	0-0	1	0	1	1	0	2	0	0	0	0	0	-9
15	Tyrell Ward		09:32	0-1	0-1	0-0	0	0	0	0	0	0	0	0	0	0	0	-3
11	Justice Williams		05:10	0-0	0-0	0-0	0	0	0	1	0	0	1	0	0	0	0	3
Team							2	1	3			0		1				
<b>Totals</b>				9-31	0-11	10-12	11	8	19	13	10	28	4	9	2	0	5	-14

Shooting By Period		
2 <sup>nd</sup> FG%	9-31	29.0%
3PT%	0-11	0.0%
FT%	10-12	83.3%
GM FG%	9-31	29.0%
3PT%	0-11	0.0%
FT%	10-12	83.3%

Dead Ball Rebounds: 1, 0

Technical Fouls::NONE

	FLA	LSU
Biggest lead	11 (2 <sup>nd</sup> 3:05)	5 (2 <sup>nd</sup> 19:07)
Best Scoring Run	7 (2 <sup>nd</sup> 13:42)	3 (2 <sup>nd</sup> 8:07)
Lead Changes	1	
Times Tied	4	
Time with Lead	14:03	03:18

Points from	FLA	LSU
Turnovers	11	1
Paint	18	14
Second Chance	4	11
Fast Breaks	9	0
Bench	14	2

	Period by Period Scoring		
	1st	2nd	TOT
FLA	25	42	67
LSU	28	28	56



**Florida at LSU**

01/10/23 Maravich Assembly Center, Baton Rouge  
2022-23 Men's Basketball

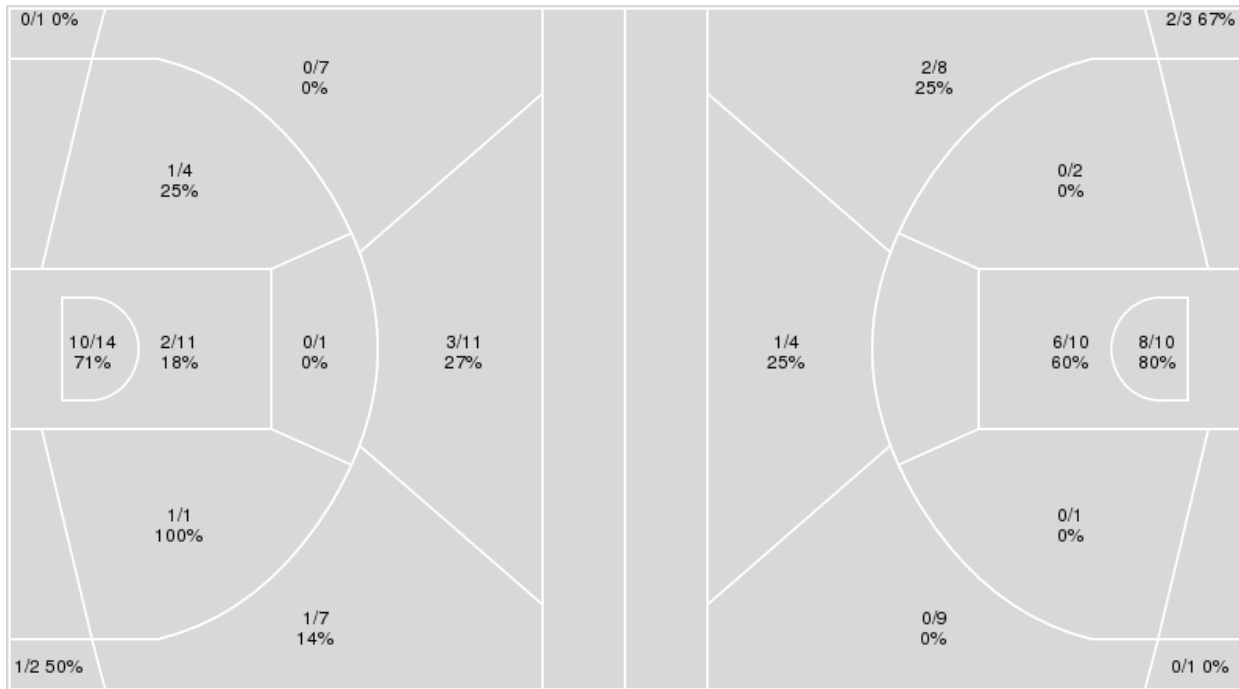
**Game Time:** 6:00 PM  
**Game Duration:** 2:06  
**Attendance:** 9,159

**Officials:** Terry Oglesby, Tony Greene, Todd Austin

{ Players => 0, 1, 2, 3, 4, 5, 10, 11, 12, 13, 15, 20, 21, 25, 30, 34, 44; } { Players => All; } FG Types => All; Results => All;  
FG Types => All; Results => All;

**LSU**

**Florida**



LSU	M/A	%
Field Goals	19/59	32
2 Points	14/31	45
3 Points	5/28	18
Free Throws	13/16	81

Florida	M/A	%
Field Goals	19/48	40
2 Points	14/23	61
3 Points	5/25	20
Free Throws	24/32	75



**Florida at LSU**

01/10/23 Maravich Assembly Center, Baton Rouge  
2022-23 Men's Basketball

**Game Time:** 6:00 PM  
**Game Duration:** 2:06  
**Attendance:** 9,159

**Officials:** Terry Oglesby, Tony Greene, Todd Austin

**Florida**

No	Name	Mins		Score		Points Diff		Points per Min		Assists		Rebounds		Steals		Turnovers	
		On	Off	On	Off	On	Off	On	Off	On	Off	On	Off	On	Off	On	Off
0	Myreon Jones	30:05	09:55	58 - 46	9 - 10	12	-1	1.93	0.91	9	1	25	9	7	3	6	4
2	Trey Bonham	11:35	28:25	9 - 13	58 - 43	-4	15	0.78	2.04	1	9	10	24	3	7	4	6
3	Alex Fudge	22:18	17:42	34 - 37	33 - 19	-3	14	1.52	1.86	5	5	20	14	5	5	4	6
5	Will Richard	24:25	15:35	41 - 27	26 - 29	14	-3	1.68	1.67	6	4	24	10	5	5	7	3
11	Kyle Lofton	31:36	08:24	48 - 46	19 - 10	2	9	1.52	2.26	7	3	27	7	9	1	8	2
12	Colin Castleton	35:39	04:21	62 - 46	5 - 10	16	-5	1.74	1.15	8	2	32	2	9	1	10	0
14	Kowacie Reeves	21:21	18:39	36 - 34	31 - 22	2	9	1.69	1.66	6	4	16	18	4	6	7	3
24	Riley Kugel	18:40	21:20	42 - 21	25 - 35	21	-10	2.25	1.17	6	4	14	20	7	3	4	6
33	Jason Jitoboh	04:21	35:39	5 - 10	62 - 46	-5	16	1.15	1.74	2	8	2	32	1	9	0	10

**LSU**

No	Name	Mins		Score		Points Diff		Points per Min		Assists		Rebounds		Steals		Turnovers	
		On	Off	On	Off	On	Off	On	Off	On	Off	On	Off	On	Off	On	Off
0	Trae Hannibal	28:14	11:46	38 - 52	18 - 15	-14	3	1.35	1.53	8	4	27	13	5	0	10	6
3	Justice Hill	30:13	09:47	45 - 50	11 - 17	-5	-6	1.49	1.12	10	2	30	10	5	0	11	5
4	Kendal Coleman	10:51	29:09	17 - 24	39 - 43	-7	-4	1.57	1.34	4	8	11	29	1	4	5	11
11	Justice Williams	13:22	26:38	15 - 21	41 - 46	-6	-5	1.12	1.54	3	9	15	25	0	5	8	8
12	KJ Williams	34:24	05:36	44 - 59	12 - 8	-15	4	1.28	2.14	8	4	35	5	4	1	13	3
13	Jalen Reed	02:55	37:05	4 - 9	52 - 58	-5	-6	1.37	1.40	1	11	1	39	1	4	1	15
15	Tyrell Ward	16:37	23:23	27 - 25	29 - 42	2	-13	1.62	1.24	6	6	15	25	1	4	6	10
20	Derek Fountain	29:48	10:12	44 - 36	12 - 31	8	-19	1.48	1.18	11	1	31	9	4	1	11	5
44	Adam Miller	33:36	06:24	46 - 59	10 - 8	-13	2	1.37	1.56	9	3	35	5	4	1	15	1





**Florida at LSU**

01/10/23 Maravich Assembly Center, Baton Rouge  
2022-23 Men's Basketball

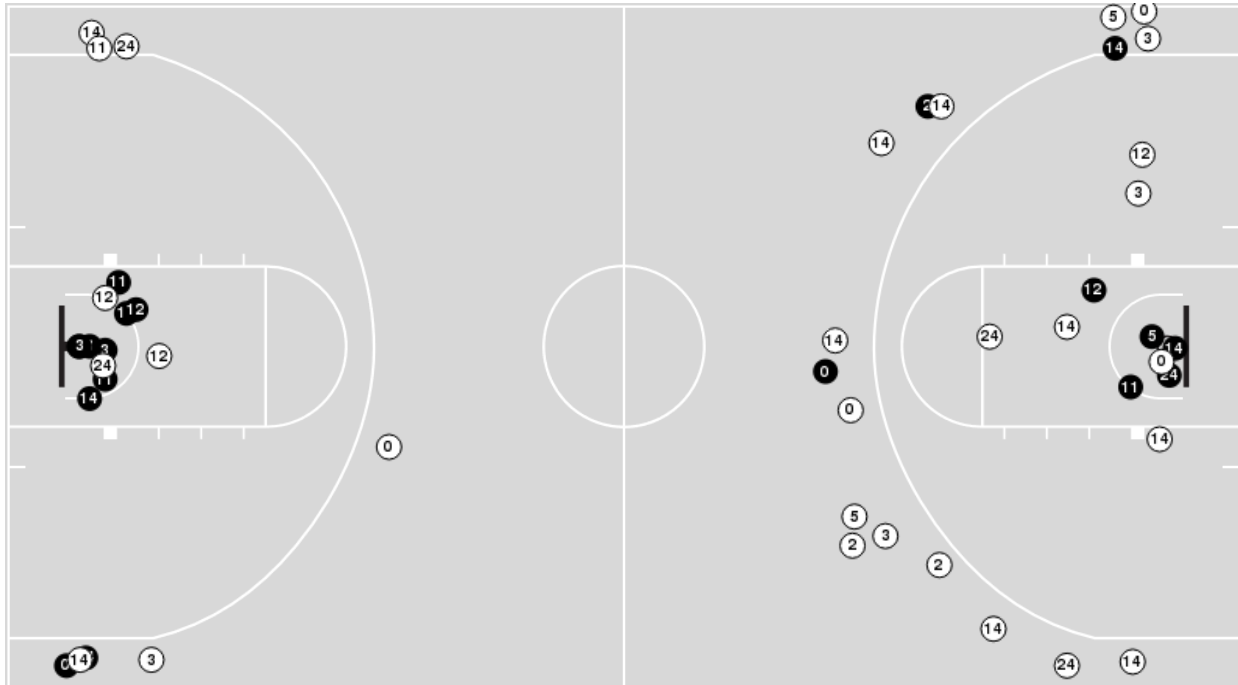
**Game Time:** 6:00 PM  
**Game Duration:** 2:06  
**Attendance:** 9,159

**Officials:** Terry Oglesby, Tony Greene, Todd Austin

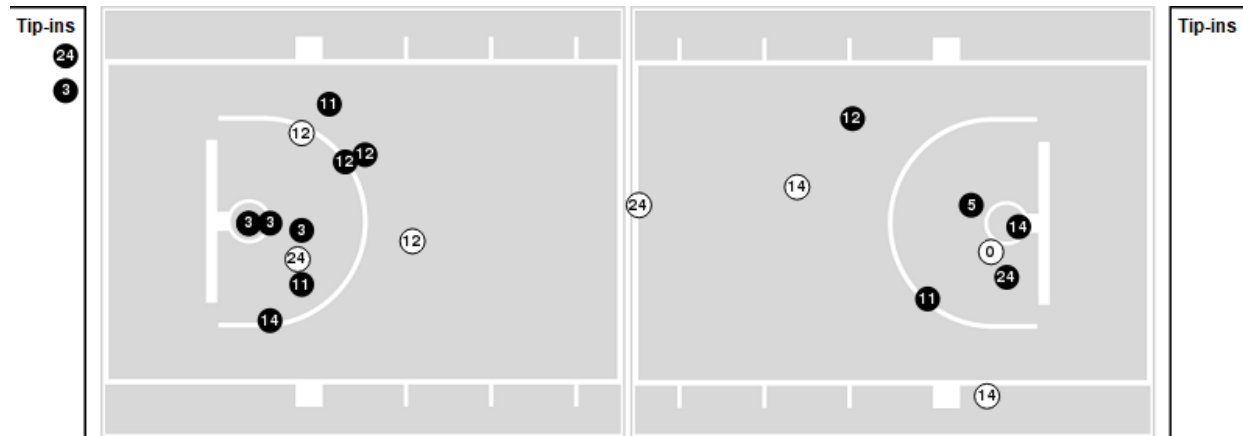
Players => AllFG Types=>AllResults=>All

**Florida**

**All Field Goals**



**Blow Up Chart**



● Made    ○ Missed    N - Player Number

Florida	M/A	%
Field Goals	19/48	40
2 Points	14/23	61
3 Points	5/25	20
Free Throws	24/32	75

Florida	M/A	%
Points in the Paint	28 (14 / 20)	70
Fast Break Points	16 (11/11)	100
Second Chance Points	10 (6/9)	67
Effective FG%	45	



**Florida at LSU**

01/10/23 Maravich Assembly Center, Baton Rouge  
2022-23 Men's Basketball

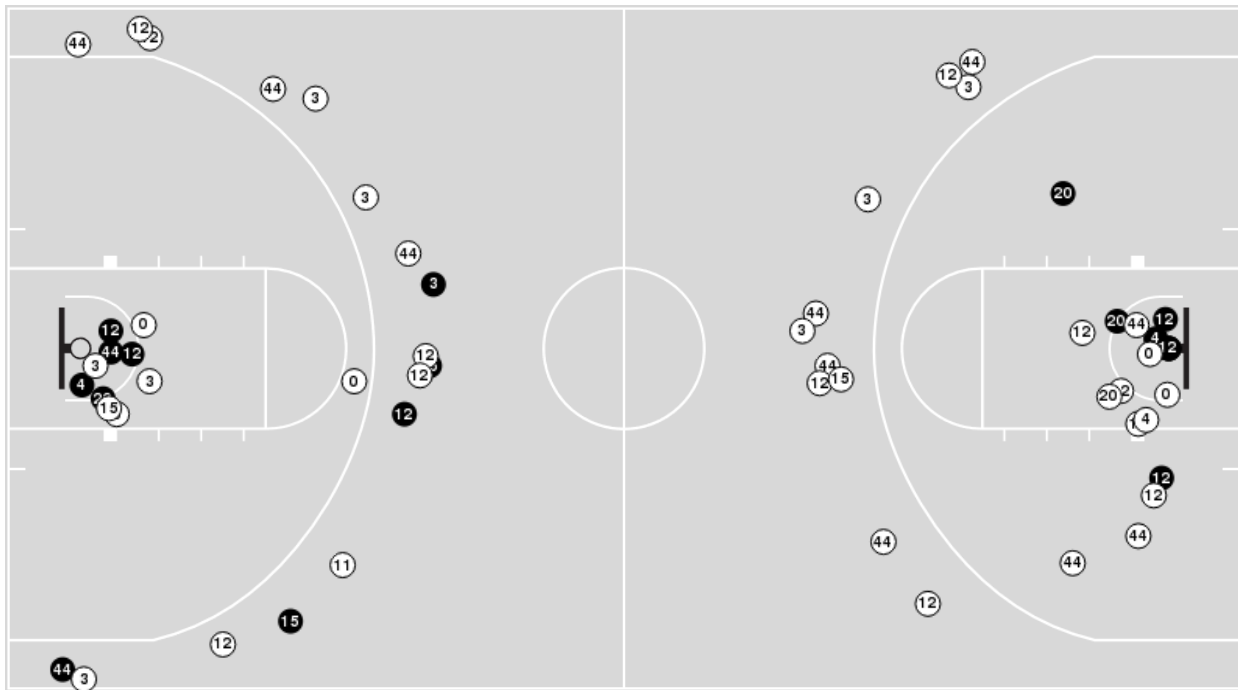
**Game Time:** 6:00 PM  
**Game Duration:** 2:06  
**Attendance:** 9,159

**Officials:** Terry Oglesby, Tony Greene, Todd Austin

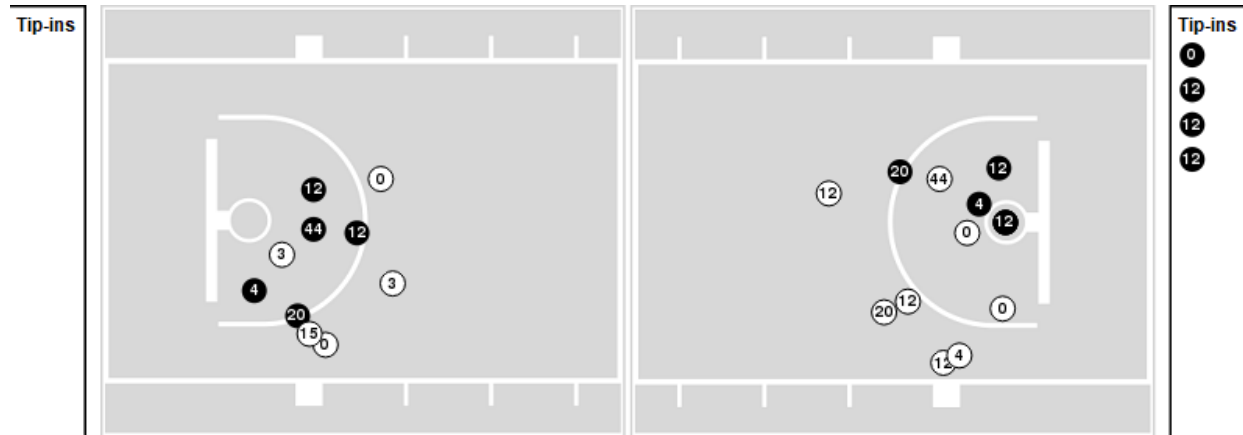
Players => 0, 1, 2, 3, 4, 5, 10, 11, 12, 13, 15, 20, 21, 25, 30, 34, 44FG Types=>AllResults=>All

**LSU**

**All Field Goals**



**Blow Up Chart**



● Made    ○ Missed    N - Player Number

LSU	M/A	%
Field Goals	19/59	32
2 Points	14/31	45
3 Points	5/28	18
Free Throws	13/16	81

LSU	M/A	%
Points in the Paint	24 (12 / 25)	48
Fast Break Points	1 (1/2)	50
Second Chance Points	19 (9/12)	75
Effective FG%	36	



**Florida at LSU**

**Florida**

Lineup	Quarter On	Time On	Quarter Off	Time Off	Time on Court	Score	Score Diff	Reb	Stl	Tov	Ass	PPP
2- Bonham T/ 3- Fudge A/ 5- Richard W/ 11- Lofton K/ 12- Castleton C/	1	20:00	1	17:10	02:50	0-4	-4	3	1	3	0	0.0000
2- Bonham T/ 5- Richard W/ 11- Lofton K/ 12- Castleton C/ 14- Reeves K/	1	17:10	1	15:48	01:22	0-3	-3	1	0	1	0	0.0000
0- Jones M/ 5- Richard W/ 12- Castleton C/ 14- Reeves K/ 24- Kugel R/	1	15:48	1	11:58	03:50	11-4	7	5	1	1	1	1.3415
0- Jones M/ 3- Fudge A/ 12- Castleton C/ 14- Reeves K/ 24- Kugel R/	1	11:58	1	11:58	00:00	0-0	0	0	0	0	0	0.0000
0- Jones M/ 3- Fudge A/ 14- Reeves K/ 24- Kugel R/ 33- Jitoboh J/	1	11:58	1	10:43	01:15	3-3	0	0	0	0	1	3.0000
0- Jones M/ 3- Fudge A/ 11- Lofton K/ 14- Reeves K/ 33- Jitoboh J/	1	10:43	1	07:37	03:06	2-7	-5	2	1	0	1	0.5000
0- Jones M/ 3- Fudge A/ 5- Richard W/ 11- Lofton K/ 12- Castleton C/	1	07:37	1	06:29	01:08	0-3	-3	1	0	0	0	0.0000
2- Bonham T/ 3- Fudge A/ 5- Richard W/ 11- Lofton K/ 12- Castleton C/	1	06:29	1	05:15	01:14	3-0	3	3	0	0	0	2.0833
2- Bonham T/ 5- Richard W/ 11- Lofton K/ 12- Castleton C/ 24- Kugel R/	1	05:15	1	01:53	03:22	6-1	5	2	2	0	1	1.0204
0- Jones M/ 2- Bonham T/ 11- Lofton K/ 12- Castleton C/ 14- Reeves K/	1	01:53	1	00:13	01:40	0-3	-3	1	0	0	0	0.0000
0- Jones M/ 3- Fudge A/ 11- Lofton K/ 12- Castleton C/ 24- Kugel R/	1	00:13	2	20:00	00:13	0-0	0	1	0	0	0	0.0000
2- Bonham T/ 3- Fudge A/ 5- Richard W/ 11- Lofton K/ 12- Castleton C/	2	20:00	2	18:53	01:07	0-2	-2	0	0	0	0	0.0000
0- Jones M/ 3- Fudge A/ 5- Richard W/ 11- Lofton K/ 12- Castleton C/	2	18:53	2	17:41	01:12	5-0	5	2	0	0	1	2.1552
0- Jones M/ 3- Fudge A/ 11- Lofton K/ 12- Castleton C/ 14- Reeves K/	2	17:41	2	14:53	02:48	4-6	-2	2	0	1	0	1.0000
0- Jones M/ 11- Lofton K/ 12- Castleton C/ 14- Reeves K/ 24- Kugel R/	2	14:53	2	11:00	03:53	11-4	7	3	2	2	2	1.4175
0- Jones M/ 5- Richard W/ 12- Castleton C/ 14- Reeves K/ 24- Kugel R/	2	11:00	2	07:41	03:19	5-3	2	2	0	1	1	1.0246
0- Jones M/ 5- Richard W/ 11- Lofton K/ 12- Castleton C/ 24- Kugel R/	2	07:41	2	07:33	00:08	0-0	0	0	0	0	0	0.0000
0- Jones M/ 3- Fudge A/ 11- Lofton K/ 12- Castleton C/ 24- Kugel R/	2	07:33	2	06:08	01:25	2-4	-2	1	0	0	0	1.0000
0- Jones M/ 3- Fudge A/ 5- Richard W/ 11- Lofton K/ 12- Castleton C/	2	06:08	2	02:02	04:06	9-6	3	4	1	0	2	1.3804
0- Jones M/ 5- Richard W/ 11- Lofton K/ 12- Castleton C/ 14- Reeves K/	2	02:02	2	01:54	00:08	0-1	-1	0	0	1	0	0.0000
0- Jones M/ 3- Fudge A/ 5- Richard W/ 11- Lofton K/ 12- Castleton C/	2	01:54	2	01:15	00:39	2-0	2	1	0	0	0	2.0000
0- Jones M/ 3- Fudge A/ 11- Lofton K/ 12- Castleton C/ 24- Kugel R/	2	01:15	2	00:00	01:15	4-2	2	0	2	0	0	2.2727



**Officials:** Terry Oglesby, Tony Greene, Todd Austin

**LSU**

Lineup	Quarter On	Time On	Quarter Off	Time Off	Time on Court	Score	Score Diff	Reb	Stl	Tov	Ass	PPP
0- Hannibal T/3- Hill J/ 12- Williams K/ 20- Fountain D/ 44- Miller A/	1	20:00	1	16:47	03:13	4-0	4	4	2	1	1	0.8197
3- Hill J/ 11- Williams J/ 12- Williams K/ 20- Fountain D/ 44- Miller A/	1	16:47	1	15:48	00:59	3-0	3	2	0	1	1	1.0000
0- Hannibal T/ 11- Williams J/ 12- Williams K/ 20- Fountain D/ 44- Miller A/	1	15:48	1	14:53	00:55	0-2	-2	1	0	1	0	0.0000
0- Hannibal T/ 11- Williams J/ 12- Williams K/ 13- Reed J/ 44- Miller A/	1	14:53	1	14:19	00:34	0-5	-5	0	0	1	0	0.0000
0- Hannibal T/ 3- Hill J/ 12- Williams K/ 13- Reed J/ 44- Miller A/	1	14:19	1	12:49	01:30	4-1	3	1	1	0	1	1.3333
0- Hannibal T/ 3- Hill J/ 12- Williams K/ 13- Reed J/ 15- Ward T/	1	12:49	1	11:58	00:51	0-3	-3	0	0	0	0	0.0000
0- Hannibal T/ 3- Hill J/ 4- Coleman K/ 15- Ward T/ 20- Fountain D/	1	11:58	1	10:43	01:15	3-3	0	2	0	0	1	3.0000
3- Hill J/ 4- Coleman K/ 15- Ward T/ 20- Fountain D/ 44- Miller A/	1	10:43	1	07:37	03:06	7-2	5	3	0	1	2	1.4000
0- Hannibal T/ 11- Williams J/ 12- Williams K/ 20- Fountain D/ 44- Miller A/	1	07:37	1	06:29	01:08	3-0	3	2	0	0	1	1.5000
0- Hannibal T/ 4- Coleman K/ 11- Williams J/ 12- Williams K/ 44- Miller A/	1	06:29	1	04:52	01:37	0-3	-3	1	0	0	0	0.0000
0- Hannibal T/ 11- Williams J/ 12- Williams K/ 20- Fountain D/ 44- Miller A/	1	04:52	1	04:29	00:23	0-2	-2	0	0	0	0	0.0000
3- Hill J/ 11- Williams J/ 12- Williams K/ 20- Fountain D/ 44- Miller A/	1	04:29	1	01:53	02:36	1-4	-3	3	0	2	0	0.2049
0- Hannibal T/ 3- Hill J/ 12- Williams K/ 15- Ward T/ 20- Fountain D/	1	01:53	1	00:13	01:40	3-0	3	2	0	0	1	1.5000
3- Hill J/ 12- Williams K/ 15- Ward T/ 20- Fountain D/ 44- Miller A/	1	00:13	2	20:00	00:13	0-0	0	0	0	0	0	0.0000
0- Hannibal T/ 3- Hill J/ 12- Williams K/ 20- Fountain D/ 44- Miller A/	2	20:00	2	15:18	04:42	6-9	-3	5	0	0	1	1.0000
0- Hannibal T/ 3- Hill J/ 4- Coleman K/ 20- Fountain D/ 44- Miller A/	2	15:18	2	14:03	01:15	2-3	-1	0	1	2	1	0.5000
0- Hannibal T/ 3- Hill J/ 4- Coleman K/ 12- Williams K/ 44- Miller A/	2	14:03	2	13:38	00:25	0-4	-4	0	0	1	0	0.0000
0- Hannibal T/ 3- Hill J/ 4- Coleman K/ 12- Williams K/ 15- Ward T/	2	13:38	2	13:24	00:14	1-0	1	0	0	0	0	2.2727
0- Hannibal T/ 3- Hill J/ 12- Williams K/ 15- Ward T/ 20- Fountain D/	2	13:24	2	11:00	02:24	3-2	1	1	1	1	1	0.8721
3- Hill J/ 12- Williams K/ 15- Ward T/ 20- Fountain D/ 44- Miller A/	2	11:00	2	10:02	00:58	0-5	-5	1	0	0	0	0.0000
11- Williams J/ 12- Williams K/ 15- Ward T/ 20- Fountain D/ 44- Miller A/	2	10:02	2	06:08	03:54	7-4	3	4	0	2	1	1.0355
0- Hannibal T/ 11- Williams J/ 12- Williams K/ 20- Fountain D/ 44- Miller A/	2	06:08	2	05:13	00:55	1-0	1	1	0	0	0	0.6944
0- Hannibal T/ 4- Coleman K/ 11- Williams J/ 12- Williams K/ 44- Miller A/	2	05:13	2	04:52	00:21	0-1	-1	1	0	1	0	0.0000
0- Hannibal T/ 3- Hill J/ 4- Coleman K/ 12- Williams K/ 44- Miller A/	2	04:52	2	04:38	00:14	0-1	-1	0	0	0	0	0.0000
0- Hannibal T/ 3- Hill J/ 12- Williams K/ 20- Fountain D/ 44- Miller A/	2	04:38	2	04:26	00:12	1-0	1	0	0	0	0	1.1364
0- Hannibal T/ 3- Hill J/ 4- Coleman K/ 12- Williams K/ 44- Miller A/	2	04:26	2	02:02	02:24	4-7	-3	4	0	0	0	1.0000
0- Hannibal T/ 3- Hill J/ 12- Williams K/ 15- Ward T/ 44- Miller A/	2	02:02	2	00:00	02:02	3-6	-3	2	0	2	0	0.6944



**Florida at LSU**

01/10/23 Maravich Assembly Center, Baton Rouge  
2022-23 Men's Basketball

**Game Time:** 6:00 PM  
**Game Duration:** 2:06  
**Attendance:** 9,159

**Officials:** Terry Oglesby, Tony Greene, Todd Austin

**Florida**

Lineup	Time	Score	Score Diff	Pts/Min	Reb	Stl	Tov	Ass	PPP
0- Jones M/ 5- Richard W/ 12- Castleton C/ 14- Reeves K/ 24- Kugel R/	07:09	16-7	9	2.2378	7	1	2	2	1.2232
0- Jones M/ 3- Fudge A/ 5- Richard W/ 11- Lofton K/ 12- Castleton C/	07:05	16-9	7	2.2588	8	1	0	3	1.3514
2- Bonham T/ 3- Fudge A/ 5- Richard W/ 11- Lofton K/ 12- Castleton C/	05:11	3-6	-3	0.5788	6	1	3	0	0.4098
0- Jones M/ 11- Lofton K/ 12- Castleton C/ 14- Reeves K/ 24- Kugel R/	03:53	11-4	7	2.8326	3	2	2	2	1.4175
2- Bonham T/ 5- Richard W/ 11- Lofton K/ 12- Castleton C/ 24- Kugel R/	03:22	6-1	5	1.7822	2	2	0	1	1.0204
0- Jones M/ 3- Fudge A/ 11- Lofton K/ 14- Reeves K/ 33- Jitoboh J/	03:06	2-7	-5	0.6452	2	1	0	1	0.5000
0- Jones M/ 3- Fudge A/ 11- Lofton K/ 12- Castleton C/ 24- Kugel R/	02:53	6-6	0	2.0809	2	2	0	0	1.5957
0- Jones M/ 3- Fudge A/ 11- Lofton K/ 12- Castleton C/ 14- Reeves K/	02:48	4-6	-2	1.4286	2	0	1	0	1.0000
0- Jones M/ 2- Bonham T/ 11- Lofton K/ 12- Castleton C/ 14- Reeves K/	01:40	0-3	-3	0.0000	1	0	0	0	0.0000
2- Bonham T/ 5- Richard W/ 11- Lofton K/ 12- Castleton C/ 14- Reeves K/	01:22	0-3	-3	0.0000	1	0	1	0	0.0000
0- Jones M/ 3- Fudge A/ 14- Reeves K/ 24- Kugel R/ 33- Jitoboh J/	01:15	3-3	0	2.4000	0	0	0	1	3.0000
0- Jones M/ 5- Richard W/ 11- Lofton K/ 12- Castleton C/ 24- Kugel R/	00:08	0-0	0	0.0000	0	0	0	0	0.0000
0- Jones M/ 5- Richard W/ 11- Lofton K/ 12- Castleton C/ 14- Reeves K/	00:08	0-1	-1	0.0000	0	0	1	0	0.0000
0- Jones M/ 3- Fudge A/ 12- Castleton C/ 14- Reeves K/ 24- Kugel R/	00:00	0-0	0	NaN	0	0	0	0	0.0000



**Florida at LSU**

01/10/23 Maravich Assembly Center, Baton Rouge  
2022-23 Men's Basketball

**Game Time:** 6:00 PM  
**Game Duration:** 2:06  
**Attendance:** 9,159

**Officials:** Terry Oglesby, Tony Greene, Todd Austin

**LSU**

Lineup	Time	Score	Score Diff	Pts/Min	Reb	Stl	Tov	Ass	PPP
0- Hannibal T/ 3- Hill J/ 12- Williams K/ 20- Fountain D/ 44- Miller A/	08:07	11-9	2	1.3552	9	2	1	2	0.9354
0- Hannibal T/ 3- Hill J/ 12- Williams K/ 15- Ward T/ 20- Fountain D/	04:04	6-2	4	1.4754	3	1	1	2	1.1029
11- Williams J/ 12- Williams K/ 15- Ward T/ 20- Fountain D/ 44- Miller A/	03:54	7-4	3	1.7949	4	0	2	1	1.0355
3- Hill J/ 11- Williams J/ 12- Williams K/ 20- Fountain D/ 44- Miller A/	03:35	4-4	0	1.1163	5	0	3	1	0.5076
0- Hannibal T/ 11- Williams J/ 12- Williams K/ 20- Fountain D/ 44- Miller A/	03:21	4-4	0	1.1940	4	0	1	1	0.7353
3- Hill J/ 4- Coleman K/ 15- Ward T/ 20- Fountain D/ 44- Miller A/	03:06	7-2	5	2.2581	3	0	1	2	1.4000
0- Hannibal T/ 3- Hill J/ 4- Coleman K/ 12- Williams K/ 44- Miller A/	03:03	4-12	-8	1.3115	4	0	1	0	0.8000
0- Hannibal T/ 3- Hill J/ 12- Williams K/ 15- Ward T/ 44- Miller A/	02:02	3-6	-3	1.4754	2	0	2	0	0.6944
0- Hannibal T/ 4- Coleman K/ 11- Williams J/ 12- Williams K/ 44- Miller A/	01:58	0-4	-4	0.0000	2	0	1	0	0.0000
0- Hannibal T/ 3- Hill J/ 12- Williams K/ 13- Reed J/ 44- Miller A/	01:30	4-1	3	2.6667	1	1	0	1	1.3333
0- Hannibal T/ 3- Hill J/ 4- Coleman K/ 15- Ward T/ 20- Fountain D/	01:15	3-3	0	2.4000	2	0	0	1	3.0000
0- Hannibal T/ 3- Hill J/ 4- Coleman K/ 20- Fountain D/ 44- Miller A/	01:15	2-3	-1	1.6000	0	1	2	1	0.5000
3- Hill J/ 12- Williams K/ 15- Ward T/ 20- Fountain D/ 44- Miller A/	01:11	0-5	-5	0.0000	1	0	0	0	0.0000
0- Hannibal T/ 3- Hill J/ 12- Williams K/ 13- Reed J/ 15- Ward T/	00:51	0-3	-3	0.0000	0	0	0	0	0.0000
0- Hannibal T/ 11- Williams J/ 12- Williams K/ 13- Reed J/ 44- Miller A/	00:34	0-5	-5	0.0000	0	0	1	0	0.0000
0- Hannibal T/ 3- Hill J/ 4- Coleman K/ 12- Williams K/ 15- Ward T/	00:14	1-0	1	4.2857	0	0	0	0	2.2727