



Missouri at LSU

03/10/22 Amalie Arena, Tampa  
2021-22 Men's Basketball

Game Time: 3:17 PM  
Game Duration: 2:01  
Attendance: 10,295

Officials: Don Daily, Patrick Evans, Rob Rorke

Missouri - 68

Record: 12-21

NO.	Name	F	Min	FG			3P			FT			Rebounds			Fouls		TP	AS	TO	ST	Blocks		+/-
				M-A	M-A	M-A	OR	DR	TOT	PF	FD	BS	BA											
23	Trevon Brazile	F	30:16	5-11	1-2	4-4	5	3	8	2	3	15	1	2	2	2	2	2	2	2	2	2	-6	
24	Kobe Brown	F	30:29	3-7	0-2	1-1	2	1	3	3	2	7	3	5	2	0	1	5	2	0	1	-5		
4	Javon Pickett	G	25:17	4-9	1-3	5-5	0	3	3	2	2	14	3	1	2	0	0	2	0	0	0	-4		
5	Jarron Coleman	G	14:35	0-5	0-4	1-2	0	0	0	3	1	1	0	2	0	0	0	0	0	0	0	-24		
12	DaJuan Gordon	G	27:41	7-9	4-5	1-2	2	4	6	4	2	19	0	2	0	0	0	0	0	0	0	-1		
1	Amari Davis		22:05	1-6	0-0	2-2	2	1	3	1	2	4	1	2	2	0	1	2	2	0	1	-13		
21	Ronnie DeGray III		23:32	2-7	1-3	1-1	1	2	3	1	2	6	3	1	2	0	3	1	2	0	3	-5		
13	Kaleb Brown		26:05	1-1	0-0	0-0	0	4	4	1	1	2	5	5	1	1	0	1	1	0	18			
Team							1	1	2			0			4									
<b>Totals</b>				23-55	7-19	15-17	13	19	32	17	15	68	16	24	11	3	7						-8	

Shooting By Period		
1st FG%	9-25	36.0%
3PT%	3-11	27.3%
FT%	2-3	66.7%
2nd FG%	14-30	46.7%
3PT%	4-8	50.0%
FT%	13-14	92.9%
GM FG%	23-55	41.8%
3PT%	7-19	36.8%
FT%	15-17	88.2%

Dead Ball Rebounds: 2, 0

Technical Fouls::NONE

LSU - 76

Record: 22-10

NO.	Name	F	Min	FG			3P			FT			Rebounds			Fouls		TP	AS	TO	ST	Blocks		+/-
				M-A	M-A	M-A	OR	DR	TOT	PF	FD	BS	BA											
4	Darius Days	F	28:31	6-11	2-4	2-2	3	4	7	3	1	16	0	2	3	1	1	1	3	1	1	-4		
5	Mwani Wilkinson	F	24:16	0-2	0-2	0-0	0	3	3	3	0	0	1	1	0	0	0	1	0	0	0	6		
15	Efton Reid	C	22:09	6-6	0-0	0-0	1	0	1	3	0	12	1	2	1	2	0	2	1	2	0	19		
0	Brandon Murray	G	35:19	2-8	0-3	3-5	0	5	5	2	5	7	9	2	0	0	2	6	0	0	2	6		
1	Xavier Pinson	G	32:17	3-6	1-3	4-4	0	0	0	1	6	11	5	4	3	0	0	2	3	0	0	2		
2	Eric Gaines		26:30	4-6	1-3	2-2	1	1	2	0	1	11	2	2	1	2	0	5	2	1	2	5		
13	Tari Eason		27:57	7-11	1-4	4-5	0	5	5	2	4	19	0	6	1	2	0	5	2	0	5			
3	Alex Fudge		03:01	0-0	0-0	0-0	0	0	0	1	0	0	0	0	0	0	0	0	0	0	0	1		
Team							0	1	1			0			0									
<b>Totals</b>				28-50	5-19	15-18	5	19	24	15	17	76	18	19	9	7	3	8						

Shooting By Period		
1st FG%	13-26	50.0%
3PT%	5-12	41.7%
FT%	8-8	100%
2nd FG%	15-24	62.5%
3PT%	0-7	0.0%
FT%	7-10	70%
GM FG%	28-50	56.0%
3PT%	5-19	26.3%
FT%	15-18	83.3%

Dead Ball Rebounds: 1, 0

Technical Fouls::NONE

	MU	LSU
Biggest lead	0 (1st 20:00)	25 (1st 4:52)
Best Scoring Run	9 (1st 3:03)	12 (2nd 9:11)
Lead Changes	0	
Times Tied	0	
Time with Lead	00:00	39:03

	MU	LSU
Points from		
Turnovers	14	29
Paint	32	42
Second Chance	17	5
Fast Breaks	11	18
Bench	12	30

	Period by Period Scoring		
	1st	2nd	TOT
MU	23	45	68
LSU	39	37	76



**Missouri at LSU**

03/10/22 Amalie Arena, Tampa  
2021-22 Men's Basketball

**Game Time:** 3:17 PM  
**Game Duration:** 2:01  
**Attendance:** 10,295

**Officials:** Don Daily, Patrick Evans, Rob Rorke

**Period 1**

**Quarter Starters:**

<b>LSU</b>	0 Murray B	1 Pinson X	4 Days D	5 Wilkinson M	15 Reid E
<b>MU</b>	4 Pickett J	5 Coleman J	12 Gordon D	23 Brazile T	24 Brown K

Game Time	LSU	Score	Diff	MU
20:00	15 REID E jumpball won			23 BRAZILE T jumpball lost
19:41	0 MURRAY B 3pt FG , jump shot missed			
19:37				23 BRAZILE T defensive rebound (1)
19:17				5 COLEMAN J turnover travel (1)
19:03	1 PINSON X 2pt FG from turnover in the paint, driving layup made (2)	<b>2-0</b>	<b>2</b>	
18:34				12 GORDON D 2pt FG outside the paint, jump shot missed
18:31	4 DAYS D defensive rebound (1)			
18:10	0 MURRAY B 3pt FG , jump shot missed			
18:07	4 DAYS D offensive rebound (2)			
18:06	4 DAYS D 2pt FG second chance in the paint, jump shot missed			
18:04	4 DAYS D offensive rebound (3)			
18:03	4 DAYS D 2pt FG second chance in the paint, layup made (2)	<b>4-0</b>	<b>4</b>	
17:46				5 COLEMAN J 3pt FG , jump shot missed
17:43				24 BROWN K offensive rebound (1)
17:43		<b>4-2</b>	<b>2</b>	24 BROWN K 2pt FG second chance in the paint, layup made (2)
17:23	0 MURRAY B foul drawn (1)			23 BRAZILE T foul personal (1 - 1)
17:13	1 PINSON X foul drawn (1)			5 COLEMAN J foul shooting (1 - 2)
17:13	1 PINSON X free throw 1 - 2 made (3)	<b>5-2</b>	<b>3</b>	
17:13	1 PINSON X free throw 2 - 2 made (4)	<b>6-2</b>	<b>4</b>	
17:03	4 DAYS D steal (1)			5 COLEMAN J turnover bad pass (2)
16:56	1 PINSON X 3pt FG fast break from turnover, jump shot made (7)	<b>9-2</b>	<b>7</b>	
16:56	0 MURRAY B assist (1)			
16:56				Timeout 30 Sec
16:26				turnover shot clock (3)
16:26				4 PICKETT J substitution out
16:26				12 GORDON D substitution out
16:26				1 DAVIS A substitution in
16:26				21 DEGRAY III R substitution in
16:08	1 PINSON X turnover bad pass (1)			
15:48				23 BRAZILE T 2pt FG from turnover in the paint, layup blocked
15:48	4 DAYS D block (1)			
15:45	4 DAYS D defensive rebound (4)			
15:41	1 PINSON X turnover bad pass (2)			23 BRAZILE T steal (1)
15:19				5 COLEMAN J 3pt FG from turnover, jump shot missed
15:15				23 BRAZILE T offensive rebound (2)
15:05				24 BROWN K turnover bad pass (1)
15:05	Timeout media			
15:05	5 WILKINSON M substitution out			
15:05	15 REID E substitution out			
15:05	2 GAINES E substitution in			
15:05	13 EASON T substitution in			



**Missouri at LSU**

03/10/22 Amalie Arena, Tampa  
2021-22 Men's Basketball

**Game Time:** 3:17 PM  
**Game Duration:** 2:01  
**Attendance:** 10,295

**Officials:** Don Daily, Patrick Evans, Rob Rorke

Game Time	LSU	Score	Diff	MU
15:05				23 BRAZILE T substitution out
15:05				13 BROWN K substitution in
14:48	4 DAYS D 3pt FG from turnover, jump shot made (5)	<b>12-2</b>	<b>10</b>	
14:48	0 MURRAY B assist (2)			
14:17				21 DEGRAY III R 3pt FG , jump shot missed
14:13	13 EASON T defensive rebound (1)			
14:06	0 MURRAY B 2pt FG outside the paint, jump shot blocked			
14:06				13 BROWN K block (1)
14:02				21 DEGRAY III R defensive rebound (1)
13:54		<b>12-4</b>	<b>8</b>	24 BROWN K 2pt FG in the paint, layup made (4)
13:54				13 BROWN K assist (1)
13:32	2 GAINES E turnover bad pass (1)			1 DAVIS A steal (1)
13:27				1 DAVIS A 2pt FG from turnover in the paint, layup blocked
13:27	2 GAINES E block (1)			
13:24	13 EASON T defensive rebound (2)			
13:02	4 DAYS D 3pt FG , jump shot missed			
12:59				defensive rebound (5)
12:59				5 COLEMAN J substitution out
12:59				13 BROWN K substitution out
12:59				12 GORDON D substitution in
12:59				23 BRAZILE T substitution in
12:59	0 MURRAY B substitution out			
12:59	5 WILKINSON M substitution in			
12:59	4 DAYS D substitution out			
12:59	15 REID E substitution in			
12:41	1 PINSON X foul drawn (2)			12 GORDON D foul offensive (1 - 3)
12:41				12 GORDON D turnover offensive (1)
12:27	1 PINSON X foul drawn (3)			12 GORDON D foul personal (2 - 4)
12:27				12 GORDON D substitution out
12:27				5 COLEMAN J substitution in
12:22	1 PINSON X 2pt FG from turnover in the paint, layup made (9)	<b>14-4</b>	<b>10</b>	
12:10				turnover 10 sec back court (6)
12:02	13 EASON T 2pt FG from turnover in the paint, jump shot missed			
11:58				21 DEGRAY III R defensive rebound (2)
11:52	13 EASON T steal (1)			21 DEGRAY III R turnover lost ball (1)
11:48	2 GAINES E foul drawn (1)			5 COLEMAN J foul shooting (2 - 5)
11:48				Timeout media
11:48	2 GAINES E free throw fast break 1 - 2 made (1)	<b>15-4</b>	<b>11</b>	
11:48	2 GAINES E free throw fast break 2 - 2 made (2)	<b>16-4</b>	<b>12</b>	
11:48	1 PINSON X substitution out			
11:48	0 MURRAY B substitution in			
11:48				24 BROWN K substitution out
11:48				4 PICKETT J substitution in
11:48				5 COLEMAN J substitution out
11:48				13 BROWN K substitution in
11:41		<b>16-6</b>	<b>10</b>	23 BRAZILE T 2pt FG fast break in the paint, alleyoop made (2)
11:41				4 PICKETT J assist (1)
11:27	13 EASON T 3pt FG , jump shot made (3)	<b>19-6</b>	<b>13</b>	
11:27	0 MURRAY B assist (3)			



**Missouri at LSU**

03/10/22 Amalie Arena, Tampa  
2021-22 Men's Basketball

**Game Time:** 3:17 PM  
**Game Duration:** 2:01  
**Attendance:** 10,295

**Officials:** Don Daily, Patrick Evans, Rob Rorke

Game Time	LSU	Score	Diff	MU
11:02	15 REID E steal (1)			13 BROWN K turnover bad pass (1)
10:45	13 EASON T 2pt FG from turnover in the paint, dunk, made (5)	<b>21-6</b>	<b>15</b>	
10:45	0 MURRAY B assist (4)			
10:30				4 PICKETT J 3pt FG , jump shot missed
10:26				23 BRAZILE T offensive rebound (3)
10:26				23 BRAZILE T substitution out
10:26				24 BROWN K substitution in
10:26				13 BROWN K substitution out
10:26				5 COLEMAN J substitution in
10:13				24 BROWN K 3pt FG second chance, jump shot missed
10:09	5 WILKINSON M defensive rebound (1)			
10:06	2 GAINES E 2pt FG fast break in the paint, jump shot made (4)	<b>23-6</b>	<b>17</b>	
10:06	5 WILKINSON M assist (1)			
09:51				5 COLEMAN J 2pt FG outside the paint, jump shot missed
09:49	13 EASON T defensive rebound (3)			
09:26	0 MURRAY B 2pt FG in the paint, jump shot made (2)	<b>25-6</b>	<b>19</b>	
09:25	2 GAINES E substitution out			
09:25	13 EASON T substitution out			
09:25	1 PINSON X substitution in			
09:25	4 DAYS D substitution in			
09:25				Timeout 30 Sec
09:18				21 DEGRAY III R substitution out
09:18				23 BRAZILE T substitution in
09:17	1 PINSON X foul drawn (4)			24 BROWN K foul offensive (1 - 6)
09:17				24 BROWN K turnover offensive (2)
09:04	15 REID E 2pt FG from turnover in the paint, dunk, made (2)	<b>27-6</b>	<b>21</b>	
09:04	0 MURRAY B assist (5)			
08:52				23 BRAZILE T 2pt FG in the paint, dunk, missed
08:48				23 BRAZILE T offensive rebound (4)
08:47		<b>27-8</b>	<b>19</b>	23 BRAZILE T 2pt FG second chance in the paint, dunk, made (4)
08:43	4 DAYS D 3pt FG fast break, jump shot made (8)	<b>30-8</b>	<b>22</b>	
08:43	1 PINSON X assist (1)			
08:19				4 PICKETT J 2pt FG in the paint, jump shot missed
08:17				offensive rebound (9)
08:17	5 WILKINSON M substitution out			
08:17	3 FUDGE A substitution in			
08:12				5 COLEMAN J 3pt FG second chance, jump shot missed
08:09	0 MURRAY B defensive rebound (1)			
07:59	4 DAYS D 2pt FG in the paint, jump shot blocked			
07:59				23 BRAZILE T block (1)
07:55				4 PICKETT J defensive rebound (1)
07:47	3 FUDGE A foul shooting (1 - 1)			5 COLEMAN J foul drawn (1)
07:47				5 COLEMAN J free throw 1 - 2 missed
07:47				offensive dead ball rebound (1)
07:47		<b>30-9</b>	<b>21</b>	5 COLEMAN J free throw 2 - 2 made (1)
07:47				Timeout media
07:47	15 REID E substitution out			
07:47	13 EASON T substitution in			



**Missouri at LSU**

03/10/22 Amalie Arena, Tampa  
2021-22 Men's Basketball

**Game Time:** 3:17 PM  
**Game Duration:** 2:01  
**Attendance:** 10,295

**Officials:** Don Daily, Patrick Evans, Rob Rorke

Game Time	LSU	Score	Diff	MU
07:47				4 PICKETT J substitution out
07:47				12 GORDON D substitution in
07:34	13 EASON T foul offensive (1 - 2)			1 DAVIS A foul drawn (1)
07:34	13 EASON T turnover offensive (1)			
07:14				24 BROWN K 3pt FG from turnover, jump shot missed
07:11	4 DAYS D defensive rebound (5)			
07:03	13 EASON T 3pt FG , jump shot missed			
07:00				12 GORDON D defensive rebound (1)
06:36				1 DAVIS A 2pt FG outside the paint, jump shot missed
06:34	4 DAYS D defensive rebound (6)			
06:34	4 DAYS D foul drawn (1)			24 BROWN K foul personal (2 - 7)
06:34	0 MURRAY B substitution out			
06:34	2 GAINES E substitution in			
06:34				24 BROWN K substitution out
06:34				21 DEGRAY III R substitution in
06:34	4 DAYS D 1&1 free throw 1 made (9)	<b>31-9</b>	<b>22</b>	
06:34	4 DAYS D 1&1 free throw 2 made (10)	<b>32-9</b>	<b>23</b>	
06:26	1 PINSON X foul personal (1 - 3)			21 DEGRAY III R foul drawn (1)
06:26				5 COLEMAN J substitution out
06:26				13 BROWN K substitution in
06:04				turnover shot clock (10)
05:50	4 DAYS D turnover travel (1)			
05:40	1 PINSON X foul drawn (5)			23 BRAZILE T foul offensive (2 - 8)
05:40				23 BRAZILE T turnover offensive (1)
05:40				23 BRAZILE T substitution out
05:40				24 BROWN K substitution in
05:16	2 GAINES E turnover lost ball (2)			
05:16	1 PINSON X substitution out			
05:16	3 FUDGE A substitution out			
05:16	0 MURRAY B substitution in			
05:16	5 WILKINSON M substitution in			
05:10				24 BROWN K turnover (3)
05:00	0 MURRAY B 2pt FG from turnover in the paint, layup missed			
04:57	2 GAINES E offensive rebound (1)			
04:52	13 EASON T 2pt FG from turnover second chance in the paint, turnaround jump shot made (7)	<b>34-9</b>	<b>25</b>	
04:52	2 GAINES E assist (1)			
04:24		<b>34-12</b>	<b>22</b>	12 GORDON D 3pt FG , jump shot made (3)
04:24				21 DEGRAY III R assist (1)
04:07	13 EASON T turnover lost ball (2)			24 BROWN K steal (1)
04:04				24 BROWN K turnover lost ball (4)
04:04	4 DAYS D substitution out			
04:04	15 REID E substitution in			
03:49	13 EASON T turnover travel (3)			
03:49				Timeout media
03:40		<b>34-15</b>	<b>19</b>	12 GORDON D 3pt FG from turnover, jump shot made (6)
03:40				13 BROWN K assist (2)
03:17	5 WILKINSON M 3pt FG , jump shot missed			
03:14				12 GORDON D defensive rebound (2)



**Missouri at LSU**

03/10/22 Amalie Arena, Tampa  
2021-22 Men's Basketball

**Game Time:** 3:17 PM  
**Game Duration:** 2:01  
**Attendance:** 10,295

**Officials:** Don Daily, Patrick Evans, Rob Rorke

Game Time	LSU	Score	Diff	MU
03:03		<b>34-18</b>	<b>16</b>	21 DEGRAY III R 3pt FG , jump shot made (3)
03:03				1 DAVIS A assist (1)
03:02	Timeout 30 Sec			
03:02	5 WILKINSON M substitution out			
03:02	15 REID E substitution out			
03:02	1 PINSON X substitution in			
03:02	4 DAYS D substitution in			
02:46	1 PINSON X foul drawn (6)			1 DAVIS A foul shooting (1 - 9)
02:46	1 PINSON X free throw 1 - 2 made (10)	<b>35-18</b>	<b>17</b>	
02:46	1 PINSON X free throw 2 - 2 made (11)	<b>36-18</b>	<b>18</b>	
02:32				21 DEGRAY III R 3pt FG , jump shot missed
02:27				12 GORDON D offensive rebound (3)
02:27		<b>36-20</b>	<b>16</b>	12 GORDON D 2pt FG second chance in the paint, dunk, made (8)
02:00	4 DAYS D 2pt FG in the paint, jump shot missed			
01:58				13 BROWN K defensive rebound (1)
01:30				turnover shot clock (14)
01:28				24 BROWN K substitution out
01:28				23 BRAZILE T substitution in
01:15	1 PINSON X 3pt FG from turnover, jump shot missed			
01:11				12 GORDON D defensive rebound (4)
01:01	4 DAYS D steal (2)			12 GORDON D turnover bad pass (2)
00:56	2 GAINES E 3pt FG fast break from turnover, jump shot made (7)	<b>39-20</b>	<b>19</b>	
00:56	0 MURRAY B assist (6)			
00:33				21 DEGRAY III R 2pt FG in the paint, jump shot blocked
00:33	2 GAINES E block (2)			
00:33				21 DEGRAY III R offensive rebound (3)
00:32		<b>39-22</b>	<b>17</b>	21 DEGRAY III R 2pt FG second chance in the paint, layup made (5)
00:32	4 DAYS D foul shooting (1 - 4)			21 DEGRAY III R foul drawn (2)
00:32		<b>39-23</b>	<b>16</b>	21 DEGRAY III R free throw 1 - 1 made (6)
00:02	4 DAYS D 3pt FG , jump shot missed			
00:00				1 DAVIS A defensive rebound (1)
<b>END OF PERIOD</b>				
<b>LSU 39-23 MU</b>				



**Missouri at LSU**

03/10/22 Amalie Arena, Tampa  
2021-22 Men's Basketball

Game Time: 3:17 PM  
Game Duration: 2:01  
Attendance: 10,295

Officials: Don Daily, Patrick Evans, Rob Rorke

**Missouri - 23**

NO.	Name	F	Min	FG	3P	FT	Rebounds			Fouls		TP	AS	TO	ST	Blocks		+/-
				M-A	M-A	M-A	OR	DR	TOT	PF	FD					BS	BA	
23	Trevon Brazile	F	12:34	2-4	0-0	0-0	3	1	4	2	0	4	0	1	1	1	1	-18
24	Kobe Brown	F	16:16	2-4	0-2	0-0	1	0	1	2	0	4	0	4	1	0	0	-11
4	Javon Pickett	G	07:35	0-2	0-1	0-0	0	1	1	0	0	0	1	0	0	0	0	-16
5	Jarron Coleman	G	11:40	0-4	0-3	1-2	0	0	0	2	1	1	0	2	0	0	0	-20
12	DaJuan Gordon	G	11:53	3-4	2-2	0-0	1	3	4	2	0	8	0	2	0	0	0	-2
1	Amari Davis		16:26	0-2	0-0	0-0	0	1	1	1	1	0	1	0	1	0	1	-9
21	Ronnie DeGray III		13:42	2-5	1-3	1-1	1	2	3	0	2	6	1	1	0	0	1	-7
13	Kaleb Brown		09:54	0-0	0-0	0-0	0	1	1	0	0	0	2	1	0	1	0	3
Team							1	1	2			0			4			
<b>Totals</b>				9-25	3-11	2-3	7	10	17	9	4	23	5	15	3	2	3	-16

Shooting By Period		
1st FG%	9-25	36.0%
3PT%	3-11	27.3%
FT%	2-3	66.7%
GM FG%	9-25	36.0%
3PT%	3-11	27.3%
FT%	2-3	66.7%

Dead Ball Rebounds: 1, 0

Technical Fouls::NONE

**LSU - 39**

NO.	Name	F	Min	FG	3P	FT	Rebounds			Fouls		TP	AS	TO	ST	Blocks		+/-
				M-A	M-A	M-A	OR	DR	TOT	PF	FD					BS	BA	
4	Darius Days	F	15:24	3-8	2-4	2-2	2	4	6	1	1	10	0	1	2	1	1	11
5	Mwani Wilkinson	F	11:51	0-1	0-1	0-0	0	1	1	0	0	0	1	0	0	0	0	14
15	Efton Reid	C	11:09	1-1	0-0	0-0	0	0	0	0	0	2	0	0	1	0	0	14
0	Brandon Murray	G	17:31	1-5	0-2	0-0	0	1	1	0	1	2	6	0	0	0	1	10
1	Xavier Pinson	G	15:23	3-4	1-2	4-4	0	0	0	1	6	11	1	2	0	0	0	16
2	Eric Gaines		12:14	2-2	1-1	2-2	1	0	1	0	1	7	1	2	0	2	0	7
13	Tari Eason		13:27	3-5	1-2	0-0	0	3	3	1	0	7	0	3	1	0	0	7
3	Alex Fudge		03:01	0-0	0-0	0-0	0	0	0	1	0	0	0	0	0	0	0	1
Team							0	0	0			0			0			
<b>Totals</b>				13-26	5-12	8-8	3	9	12	4	9	39	9	8	4	3	2	16

Shooting By Period		
1st FG%	13-26	50.0%
3PT%	5-12	41.7%
FT%	8-8	100%
GM FG%	13-26	50.0%
3PT%	5-12	41.7%
FT%	8-8	100.0%

Dead Ball Rebounds: 0, 0

Technical Fouls::NONE

	MU	LSU
Biggest lead	0 (1 <sup>st</sup> 20:00)	25 (1 <sup>st</sup> 4:52)
Best Scoring Run	9 (1 <sup>st</sup> 3:03)	11 (1 <sup>st</sup> 9:04)
Lead Changes	0	
Times Tied	0	
Time with Lead	00:00	19:03

	MU	LSU
Points from		
Turnovers	3	21
Paint	12	16
Second Chance	9	4
Fast Breaks	2	13
Bench	6	14

	Period by Period Scoring		
	1st	2nd	TOT
MU	23	45	68
LSU	39	37	76



**Missouri at LSU**

03/10/22 Amalie Arena, Tampa  
2021-22 Men's Basketball

**Game Time:** 3:17 PM  
**Game Duration:** 2:01  
**Attendance:** 10,295

**Officials:** Don Daily, Patrick Evans, Rob Rorke

**Period 2**

**Quarter Starters:**

<b>LSU</b>	0 Murray B	1 Pinson X	4 Days D	5 Wilkinson M	15 Reid E
<b>MU</b>	4 Pickett J	12 Gordon D	13 Brown K	23 Brazile T	24 Brown K

Game Time	LSU	Score	Diff	MU
20:00	2 GAINES E substitution out			
20:00	13 EASON T substitution out			
20:00	5 WILKINSON M substitution in			
20:00	15 REID E substitution in			
20:00				1 DAVIS A substitution out
20:00				21 DEGRAY III R substitution out
20:00				4 PICKETT J substitution in
20:00				24 BROWN K substitution in
19:49				23 BRAZILE T 3pt FG , jump shot missed
19:44	0 MURRAY B defensive rebound (2)			
19:19	1 PINSON X 3pt FG , jump shot missed			
19:16				23 BRAZILE T defensive rebound (5)
18:59		<b>39-25</b>	<b>14</b>	13 BROWN K 2pt FG in the paint, layup made (2)
18:59				4 PICKETT J assist (2)
18:42	15 REID E 2pt FG in the paint, hook shot made (4)	<b>41-25</b>	<b>16</b>	
18:30		<b>41-28</b>	<b>13</b>	4 PICKETT J 3pt FG , jump shot made (3)
18:30				24 BROWN K assist (1)
18:01	5 WILKINSON M 3pt FG , jump shot missed			
17:58	4 DAYS D offensive rebound (7)			
17:58	4 DAYS D turnover out of bounds (2)			
17:47				23 BRAZILE T 2pt FG from turnover in the paint, dunk, missed
17:44				23 BRAZILE T offensive rebound (6)
17:43				23 BRAZILE T 2pt FG from turnover second chance in the paint, dunk, blocked
17:43	15 REID E block (1)			
17:43				23 BRAZILE T offensive rebound (7)
17:39	5 WILKINSON M foul shooting (1 - 1)			23 BRAZILE T foul drawn (1)
17:39		<b>41-29</b>	<b>12</b>	23 BRAZILE T free throw 1 - 2 made (5)
17:39		<b>41-30</b>	<b>11</b>	23 BRAZILE T free throw 2 - 2 made (6)
17:26	15 REID E turnover travel (1)			
17:15				4 PICKETT J 3pt FG from turnover, jump shot missed
17:11	0 MURRAY B defensive rebound (3)			
17:13	0 MURRAY B foul drawn (2)			12 GORDON D foul personal (3 - 1)
16:51	4 DAYS D 2pt FG in the paint, layup made (12)	<b>43-30</b>	<b>13</b>	
16:51	1 PINSON X assist (2)			
16:28				4 PICKETT J 2pt FG in the paint, layup missed
16:27				24 BROWN K offensive rebound (2)
16:27		<b>43-32</b>	<b>11</b>	24 BROWN K 2pt FG second chance in the paint, layup made (6)
16:27	5 WILKINSON M foul shooting (2 - 2)			24 BROWN K foul drawn (1)
16:27	5 WILKINSON M substitution out			
16:27	2 GAINES E substitution in			
16:27				12 GORDON D substitution out
16:27				1 DAVIS A substitution in





**Missouri at LSU**

03/10/22 Amalie Arena, Tampa  
2021-22 Men's Basketball

**Game Time:** 3:17 PM  
**Game Duration:** 2:01  
**Attendance:** 10,295

**Officials:** Don Daily, Patrick Evans, Rob Rorke

Game Time	LSU	Score	Diff	MU
16:27		<b>43-33</b>	<b>10</b>	24 BROWN K free throw 1 - 1 made (7)
16:08	1 PINSON X 2pt FG outside the paint, jump shot missed			
16:04				13 BROWN K defensive rebound (2)
16:04	4 DAYS D foul personal (2 - 3)			24 BROWN K foul drawn (2)
15:50	1 PINSON X steal (1)			24 BROWN K turnover bad pass (5)
15:44	15 REID E foul offensive (1 - 4)			23 BRAZILE T foul drawn (2)
15:44	15 REID E turnover offensive (2)			
15:44	Timeout media			
15:44	15 REID E substitution out			
15:44	13 EASON T substitution in			
15:44				24 BROWN K substitution out
15:44				21 DEGRAY III R substitution in
15:18	2 GAINES E steal (1)			4 PICKETT J turnover lost ball (1)
15:07	0 MURRAY B 2pt FG from turnover in the paint, layup made (4)	<b>45-33</b>	<b>12</b>	
15:07	1 PINSON X assist (3)			
14:59				1 DAVIS A turnover out of bounds (1)
14:59	13 EASON T 3pt FG from turnover, jump shot missed			
14:55				13 BROWN K defensive rebound (3)
14:53				23 BRAZILE T 2pt FG in the paint, jump shot missed
14:53				1 DAVIS A offensive rebound (2)
14:53	0 MURRAY B foul shooting (1 - 5)			1 DAVIS A foul drawn (2)
14:53		<b>45-34</b>	<b>11</b>	1 DAVIS A free throw 1 - 2 made (1)
14:53	13 EASON T substitution out			
14:53	15 REID E substitution in			
14:53				13 BROWN K substitution out
14:53				5 COLEMAN J substitution in
14:53		<b>45-35</b>	<b>10</b>	1 DAVIS A free throw 2 - 2 made (2)
14:47	1 PINSON X turnover bad pass (3)			21 DEGRAY III R steal (1)
14:30				1 DAVIS A turnover lost ball (2)
14:30				1 DAVIS A substitution out
14:30				12 GORDON D substitution in
14:16	0 MURRAY B foul drawn (3)			21 DEGRAY III R foul shooting (1 - 2)
14:16	0 MURRAY B free throw 1 - 2 made (5)	<b>46-35</b>	<b>11</b>	
14:16	4 DAYS D substitution out			
14:16	13 EASON T substitution in			
14:16				23 BRAZILE T substitution out
14:16				24 BROWN K substitution in
14:16				4 PICKETT J substitution out
14:16				13 BROWN K substitution in
14:16	0 MURRAY B free throw 2 - 2 missed			
14:15				24 BROWN K defensive rebound (3)
13:50				21 DEGRAY III R 2pt FG outside the paint, jump shot blocked
13:50	13 EASON T block (1)			
13:49	defensive rebound (16)			
13:34	15 REID E 2pt FG outside the paint, jump shot made (6)	<b>48-35</b>	<b>13</b>	
13:12	13 EASON T foul personal (2 - 6)			12 GORDON D foul drawn (1)
13:08				24 BROWN K 2pt FG in the paint, jump shot blocked
13:08	15 REID E block (2)			
13:05	2 GAINES E defensive rebound (2)			



**Missouri at LSU**

03/10/22 Amalie Arena, Tampa  
2021-22 Men's Basketball

**Game Time:** 3:17 PM  
**Game Duration:** 2:01  
**Attendance:** 10,295

**Officials:** Don Daily, Patrick Evans, Rob Rorke

Game Time	LSU	Score	Diff	MU
13:02	13 EASON T 2pt FG fast break in the paint, layup made (9)	<b>50-35</b>	<b>15</b>	
13:02	2 GAINES E assist (2)			
12:45				5 COLEMAN J 3pt FG , jump shot missed
12:41	0 MURRAY B defensive rebound (4)			
12:13	0 MURRAY B 3pt FG , jump shot missed			
12:07	15 REID E offensive rebound (1)			
11:58	13 EASON T foul drawn (1)			5 COLEMAN J foul shooting (3 - 3)
11:58	Timeout media			
11:58				5 COLEMAN J substitution out
11:58				13 BROWN K substitution out
11:58				21 DEGRAY III R substitution out
11:58				1 DAVIS A substitution in
11:58				4 PICKETT J substitution in
11:58				23 BRAZILE T substitution in
11:58	13 EASON T free throw 1 - 2 missed			
11:58	offensive dead ball rebound (1)			
11:58	13 EASON T free throw 2 - 2 made (10)	<b>51-35</b>	<b>16</b>	
11:52	1 PINSON X substitution out			
11:52	5 WILKINSON M substitution in			
11:30				12 GORDON D 3pt FG , jump shot missed
11:28	13 EASON T defensive rebound (4)			
11:13	15 REID E 2pt FG in the paint, layup made (8)	<b>53-35</b>	<b>18</b>	
10:50				1 DAVIS A 2pt FG outside the paint, jump shot missed
10:46	5 WILKINSON M defensive rebound (2)			
10:23	2 GAINES E 3pt FG , jump shot missed			
10:19				12 GORDON D defensive rebound (5)
10:13				24 BROWN K 2pt FG outside the paint, jump shot missed
10:10	13 EASON T defensive rebound (5)			
09:47	13 EASON T 2pt FG in the paint, layup made (12)	<b>55-35</b>	<b>20</b>	
09:47	15 REID E assist (1)			
09:31				4 PICKETT J 2pt FG in the paint, jump shot missed
09:28	5 WILKINSON M defensive rebound (3)			
09:11	15 REID E 2pt FG outside the paint, jump shot made (10)	<b>57-35</b>	<b>22</b>	
09:11	0 MURRAY B assist (7)			
08:46	15 REID E foul shooting (2 - 7)			12 GORDON D foul drawn (2)
08:46				12 GORDON D free throw 1 - 2 missed
08:46				offensive dead ball rebound (2)
08:46	0 MURRAY B substitution out			
08:46	13 EASON T substitution out			
08:46	1 PINSON X substitution in			
08:46	4 DAYS D substitution in			
08:46				1 DAVIS A substitution out
08:46				24 BROWN K substitution out
08:46				13 BROWN K substitution in
08:46				21 DEGRAY III R substitution in
08:46		<b>57-36</b>	<b>21</b>	12 GORDON D free throw 2 - 2 made (9)
08:25	15 REID E 2pt FG in the paint, turnaround jump shot made (12)	<b>59-36</b>	<b>23</b>	
08:09	15 REID E foul shooting (3 - 8)			4 PICKETT J foul drawn (1)
08:09		<b>59-37</b>	<b>22</b>	4 PICKETT J free throw 1 - 2 made (4)



**Missouri at LSU**

03/10/22 Amalie Arena, Tampa  
2021-22 Men's Basketball

**Game Time:** 3:17 PM  
**Game Duration:** 2:01  
**Attendance:** 10,295

**Officials:** Don Daily, Patrick Evans, Rob Rorke

Game Time	LSU	Score	Diff	MU
08:09	15 REID E substitution out			
08:09	13 EASON T substitution in			
08:09		<b>59-38</b>	<b>21</b>	4 PICKETT J free throw 2 - 2 made (5)
07:58	13 EASON T 3pt FG , jump shot missed			
07:53				13 BROWN K defensive rebound (4)
07:50		<b>59-40</b>	<b>19</b>	23 BRAZILE T 2pt FG fast break in the paint, layup made (8)
07:50				13 BROWN K assist (3)
07:28	2 GAINES E 2pt FG in the paint, driving layup made (9)	<b>61-40</b>	<b>21</b>	
07:11		<b>61-42</b>	<b>19</b>	23 BRAZILE T 2pt FG in the paint, layup made (10)
07:11				21 DEGRAY III R assist (2)
06:47	4 DAYS D 2pt FG in the paint, turnaround jump shot made (14)	<b>63-42</b>	<b>21</b>	
06:47	1 PINSON X assist (4)			
06:35		<b>63-45</b>	<b>18</b>	12 GORDON D 3pt FG , jump shot made (12)
06:35				13 BROWN K assist (4)
06:34				Timeout 30 Sec
06:34	2 GAINES E substitution out			
06:34	0 MURRAY B substitution in			
06:16	13 EASON T foul drawn (2)			13 BROWN K foul shooting (1 - 4)
06:16	Timeout media			
06:16	13 EASON T free throw 1 - 2 made (13)	<b>64-45</b>	<b>19</b>	
06:16	13 EASON T free throw 2 - 2 made (14)	<b>65-45</b>	<b>20</b>	
05:56	4 DAYS D foul personal (3 - 9)			23 BRAZILE T foul drawn (3)
05:56		<b>65-46</b>	<b>19</b>	23 BRAZILE T 1&1 free throw 1 made (11)
05:56		<b>65-47</b>	<b>18</b>	23 BRAZILE T 1&1 free throw 2 made (12)
05:47	13 EASON T turnover bad pass (4)			21 DEGRAY III R steal (2)
05:47				21 DEGRAY III R 2pt FG from turnover in the paint, dunk, blocked
05:47	13 EASON T block (2)			
05:47				12 GORDON D offensive rebound (6)
05:47		<b>65-49</b>	<b>16</b>	12 GORDON D 2pt FG from turnover second chance in the paint, layup made (14)
05:47	13 EASON T turnover bad pass (5)			23 BRAZILE T steal (2)
05:47	1 PINSON X steal (2)			13 BROWN K turnover bad pass (2)
05:24	5 WILKINSON M turnover bad pass (1)			13 BROWN K steal (1)
05:13	1 PINSON X steal (3)			13 BROWN K turnover bad pass (3)
05:09	13 EASON T 2pt FG fast break from turnover in the paint, layup made (16)	<b>67-49</b>	<b>18</b>	
05:09	1 PINSON X assist (5)			
05:09	13 EASON T foul drawn (3)			4 PICKETT J foul shooting (1 - 5)
05:09	13 EASON T free throw fast break 1 - 1 made (17)	<b>68-49</b>	<b>19</b>	
04:46				23 BRAZILE T turnover bad pass (2)
04:27	13 EASON T foul drawn (4)			12 GORDON D foul personal (4 - 6)
04:27				12 GORDON D substitution out
04:27				24 BROWN K substitution in
04:25	1 PINSON X turnover bad pass (4)			4 PICKETT J steal (1)
04:23		<b>68-51</b>	<b>17</b>	4 PICKETT J 2pt FG fast break from turnover in the paint, layup made (7)
04:23	5 WILKINSON M foul shooting (3 - 10)			4 PICKETT J foul drawn (2)
04:23	4 DAYS D substitution out			
04:23	2 GAINES E substitution in			



**Missouri at LSU**

03/10/22 Amalie Arena, Tampa  
2021-22 Men's Basketball

**Game Time:** 3:17 PM  
**Game Duration:** 2:01  
**Attendance:** 10,295

**Officials:** Don Daily, Patrick Evans, Rob Rorke

Game Time	LSU	Score	Diff	MU
04:23		<b>68-52</b>	<b>16</b>	4 PICKETT J free throw fast break 1 - 1 made (8)
04:13	0 MURRAY B 2pt FG in the paint, jump shot blocked			
04:13				23 BRAZILE T block (2)
04:09				4 PICKETT J defensive rebound (2)
03:58		<b>68-54</b>	<b>14</b>	4 PICKETT J 2pt FG in the paint, layup made (10)
03:58				21 DEGRAY III R assist (3)
03:27	13 EASON T 2pt FG in the paint, layup made (19)	<b>70-54</b>	<b>16</b>	
03:27	0 MURRAY B assist (8)			
03:08		<b>70-57</b>	<b>13</b>	23 BRAZILE T 3pt FG , jump shot made (15)
03:08				13 BROWN K assist (5)
03:00	5 WILKINSON M substitution out			
03:00	4 DAYS D substitution in			
02:55	4 DAYS D 2pt FG in the paint, jump shot made (16)	<b>72-57</b>	<b>15</b>	
02:55	0 MURRAY B assist (9)			
02:42	0 MURRAY B foul personal (2 - 11)			13 BROWN K foul drawn (1)
02:42	Timeout media			
02:42				21 DEGRAY III R substitution out
02:42				12 GORDON D substitution in
02:42		<b>72-58</b>	<b>14</b>	4 PICKETT J free throw 1 - 2 made (11)
02:42		<b>72-59</b>	<b>13</b>	4 PICKETT J free throw 2 - 2 made (12)
02:12	0 MURRAY B foul drawn (4)			4 PICKETT J foul personal (2 - 7)
02:12	0 MURRAY B 1&1 free throw 1 made (6)	<b>73-59</b>	<b>14</b>	
02:12	0 MURRAY B 1&1 free throw 2 made (7)	<b>74-59</b>	<b>15</b>	
02:05				13 BROWN K turnover bad pass (4)
01:51	2 GAINES E 2pt FG from turnover in the paint, dunk, made (11)	<b>76-59</b>	<b>17</b>	
01:32		<b>76-61</b>	<b>15</b>	4 PICKETT J 2pt FG in the paint, layup made (14)
01:32				24 BROWN K assist (2)
01:20	13 EASON T turnover bad pass (6)			4 PICKETT J steal (2)
01:16		<b>76-63</b>	<b>13</b>	12 GORDON D 2pt FG fast break from turnover in the paint, layup made (16)
01:16				4 PICKETT J assist (3)
00:38	2 GAINES E 3pt FG , jump shot missed			
00:34				4 PICKETT J defensive rebound (3)
00:30		<b>76-66</b>	<b>10</b>	12 GORDON D 3pt FG , jump shot made (19)
00:30				23 BRAZILE T assist (1)
00:29				Timeout 60 Sec
00:29				12 GORDON D substitution out
00:29				1 DAVIS A substitution in
00:24	0 MURRAY B turnover bad pass (1)			24 BROWN K steal (2)
00:19		<b>76-68</b>	<b>8</b>	1 DAVIS A 2pt FG fast break from turnover in the paint, layup made (4)
00:19				24 BROWN K assist (3)
00:16	0 MURRAY B turnover bad pass (2)			1 DAVIS A steal (2)
00:10				1 DAVIS A 2pt FG from turnover in the paint, layup missed
00:10				1 DAVIS A offensive rebound (3)
00:10				1 DAVIS A 2pt FG from turnover second chance in the paint, layup missed
00:10	0 MURRAY B defensive rebound (5)			
00:10	0 MURRAY B foul drawn (5)			24 BROWN K foul personal (3 - 8)
00:10	0 MURRAY B 1&1 free throw 1 missed			



Official Basketball Play by Play - Second Half

### Missouri at LSU

03/10/22 Amalie Arena, Tampa  
2021-22 Men's Basketball

Game Time: 3:17 PM

Game Duration: 2:01

Attendance: 10,295

Officials: Don Daily, Patrick Evans, Rob Rorke

Game Time	LSU	Score	Diff	MU
00:09				23 BRAZILE T defensive rebound (8)
00:03	4 DAYS D steal (3)			13 BROWN K turnover bad pass (5)
END OF GAME				
LSU 76-68 MU				



Missouri at LSU

03/10/22 Amalie Arena, Tampa  
2021-22 Men's Basketball

Game Time: 3:17 PM  
Game Duration: 2:01  
Attendance: 10,295

Officials: Don Daily, Patrick Evans, Rob Rorke

Missouri - 45

NO.	Name	F	Min	FG			Rebounds			Fouls		TP	AS	TO	ST	Blocks		+/-
				M-A	3P	FT	OR	DR	TOT	PF	FD					BS	BA	
23	Trevon Brazile	F	17:42	3-7	1-2	4-4	2	2	4	0	3	11	1	1	1	1	1	12
24	Kobe Brown	F	14:13	1-3	0-0	1-1	1	1	2	1	2	3	3	1	1	0	1	6
4	Javon Pickett	G	17:42	4-7	1-2	5-5	0	2	2	2	2	14	2	1	2	0	0	12
5	Jarron Coleman	G	02:55	0-1	0-1	0-0	0	0	0	1	0	0	0	0	0	0	0	-4
12	DaJuan Gordon	G	15:48	4-5	2-3	1-2	1	1	2	2	2	11	0	0	0	0	0	1
1	Amari Davis		05:39	1-4	0-0	2-2	2	0	2	0	1	4	0	2	1	0	0	-4
21	Ronnie DeGray III		09:50	0-2	0-0	0-0	0	0	0	1	0	0	2	0	2	0	2	2
13	Kaleb Brown		16:11	1-1	0-0	0-0	0	3	3	1	1	2	3	4	1	0	0	15
Team							0	0	0			0		0				
<b>Totals</b>				14-30	4-8	13-14	6	9	15	8	11	45	11	9	8	1	4	8

Shooting By Period		
2 <sup>nd</sup> FG%	14-30	46.7%
3PT%	4-8	50.0%
FT%	13-14	92.9%
GM FG%	14-30	46.7%
3PT%	4-8	50.0%
FT%	13-14	92.9%

Dead Ball Rebounds: 1, 0

Technical Fouls::NONE

LSU - 37

NO.	Name	F	Min	FG			Rebounds			Fouls		TP	AS	TO	ST	Blocks		+/-
				M-A	3P	FT	OR	DR	TOT	PF	FD					BS	BA	
4	Darius Days	F	13:07	3-3	0-0	0-0	1	0	1	2	0	6	0	1	1	0	0	-15
5	Mwani Wilkinson	F	12:25	0-1	0-1	0-0	0	2	2	3	0	0	0	1	0	0	0	-8
15	Efton Reid	C	11:00	5-5	0-0	0-0	1	0	1	3	0	10	1	2	0	2	0	5
0	Brandon Murray	G	17:48	1-3	0-1	3-5	0	4	4	2	4	5	3	2	0	0	1	-4
1	Xavier Pinson	G	16:54	0-2	0-1	0-0	0	0	0	0	0	0	4	2	3	0	0	-14
2	Eric Gaines		14:16	2-4	0-2	0-0	0	1	1	0	0	4	1	0	1	0	0	-2
13	Tari Eason		14:30	4-6	0-2	4-5	0	2	2	1	4	12	0	3	0	2	0	-2
Team							0	1	1			0		0				
<b>Totals</b>				15-24	0-7	7-10	2	10	12	11	8	37	9	11	5	4	1	-8

Shooting By Period		
2 <sup>nd</sup> FG%	15-24	62.5%
3PT%	0-7	0.0%
FT%	7-10	70%
GM FG%	15-24	62.5%
3PT%	0-7	0.0%
FT%	7-10	70.0%

Dead Ball Rebounds: 1, 0

Technical Fouls::NONE

	MU	LSU
Biggest lead	0 (1 <sup>st</sup> 20:00)	23 (2 <sup>nd</sup> 8:25)
Best Scoring Run	9(2 <sup>nd</sup> 0:19)	12(2 <sup>nd</sup> 9:11)
Lead Changes	0	
Times Tied	0	
Time with Lead	00:00	19:49

Points from	MU	LSU
Turnovers	11	8
Paint	20	26
Second Chance	8	1
Fast Breaks	9	5
Bench	6	16

	Period by Period Scoring		
	1st	2nd	TOT
MU	23	45	68
LSU	39	37	76



**Missouri at LSU**

03/10/22 Amalie Arena, Tampa  
2021-22 Men's Basketball

**Game Time:** 3:17 PM  
**Game Duration:** 2:01  
**Attendance:** 10,295

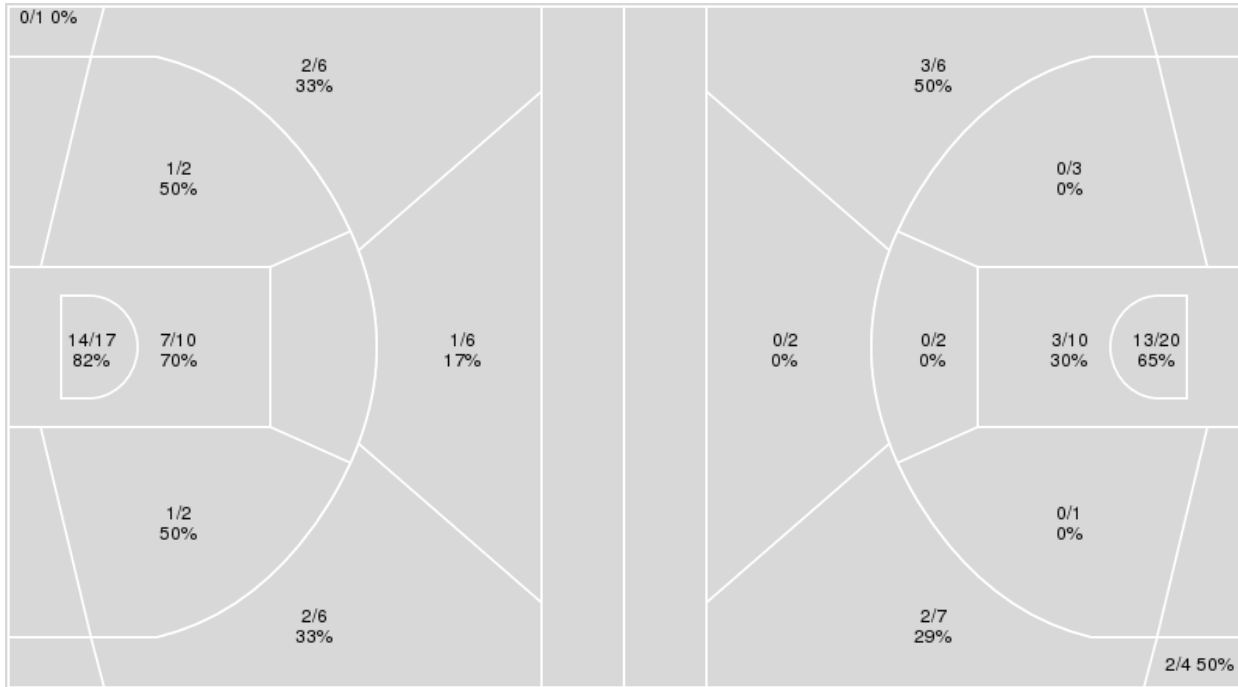
**Officials:** Don Daily, Patrick Evans, Rob Rorke

{ Players => 0, 1, 2, 3, 4, 5, 10, 11, 13, 15, 20, 21, 22, 24, 25, 30, 44; }  
FG Types => All; Results => All;

{ Players => 0, 1, 2, 4, 5, 11, 12, 13, 21, 23, 24, 32; } FG Types => All;  
Results => All;

**LSU**

**Missouri**



LSU	M/A	%
Field Goals	28/50	56
2 Points	23/31	74
3 Points	5/19	26
Free Throws	15/18	83

Missouri	M/A	%
Field Goals	23/55	42
2 Points	16/36	44
3 Points	7/19	37
Free Throws	15/17	88



**Missouri at LSU**

03/10/22 Amalie Arena, Tampa  
2021-22 Men's Basketball

**Game Time:** 3:17 PM  
**Game Duration:** 2:01  
**Attendance:** 10,295

**Officials:** Don Daily, Patrick Evans, Rob Rorke

**Missouri**

No	Name	Mins		Score		Points Diff		Points per Min		Assists		Rebounds		Steals		Turnovers	
		On	Off	On	Off	On	Off	On	Off	On	Off	On	Off	On	Off	On	Off
1	Amari Davis	22:05	17:55	26 - 39	42 - 37	-13	5	1.18	2.34	6	10	21	11	6	5	17	7
4	Javon Pickett	25:17	14:43	52 - 56	16 - 20	-4	-4	2.06	1.09	12	4	20	12	8	3	14	10
5	Jarron Coleman	14:35	25:25	8 - 32	60 - 44	-24	16	0.55	2.36	1	15	11	21	3	8	8	16
12	DaJuan Gordon	27:41	12:19	48 - 49	20 - 27	-1	-7	1.73	1.62	11	5	18	14	5	6	14	10
13	Kaleb Brown	26:05	13:55	62 - 44	6 - 32	18	-26	2.38	0.43	16	0	23	9	9	2	15	9
21	Ronnie DeGray III	23:32	16:28	42 - 47	26 - 29	-5	-3	1.78	1.58	10	6	17	15	8	3	17	7
23	Trevon Brazile	30:16	09:44	55 - 61	13 - 15	-6	-2	1.82	1.34	12	4	26	6	9	2	21	3
24	Kobe Brown	30:29	09:31	47 - 52	21 - 24	-5	-3	1.54	2.21	12	4	24	8	7	4	14	10

**LSU**

No	Name	Mins		Score		Points Diff		Points per Min		Assists		Rebounds		Steals		Turnovers	
		On	Off	On	Off	On	Off	On	Off	On	Off	On	Off	On	Off	On	Off
0	Brandon Murray	35:19	04:41	64 - 58	12 - 10	6	2	1.81	2.56	17	1	24	0	8	1	17	2
1	Xavier Pinson	32:17	07:43	59 - 57	17 - 11	2	6	1.83	2.20	12	6	17	7	8	1	17	2
2	Eric Gaines	26:30	13:30	53 - 48	23 - 20	5	3	2.00	1.70	13	5	14	10	6	3	10	9
3	Alex Fudge	03:01	36:59	2 - 1	74 - 67	1	7	0.66	2.00	0	18	3	21	0	9	3	16
4	Darius Days	28:31	11:29	50 - 54	26 - 14	-4	12	1.75	2.26	11	7	14	10	7	2	18	1
5	Mwani Wilkinson	24:16	15:44	52 - 46	24 - 22	6	2	2.14	1.53	13	5	14	10	5	4	10	9
13	Tari Eason	27:57	12:03	55 - 50	21 - 18	5	3	1.97	1.74	14	4	16	8	7	2	13	6
15	Efton Reid	22:09	17:51	45 - 26	31 - 42	19	-11	2.03	1.74	10	8	18	6	4	5	7	12





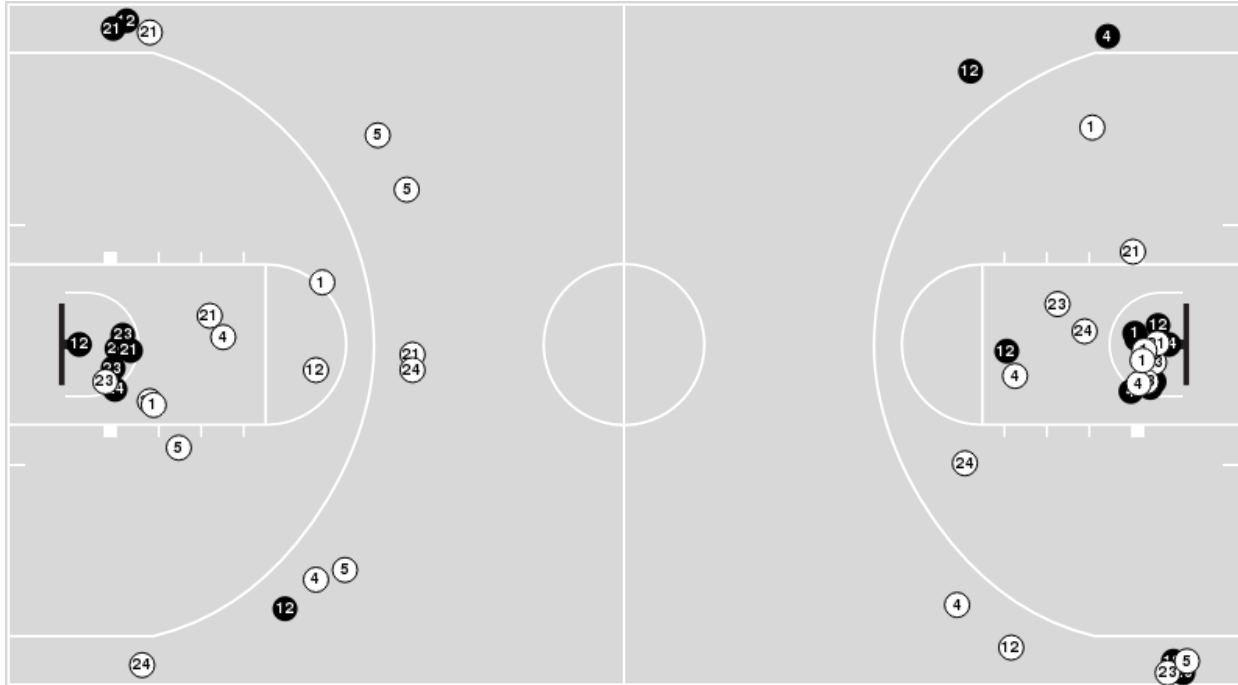
**Missouri at LSU**

03/10/22 Amalie Arena, Tampa  
2021-22 Men's Basketball

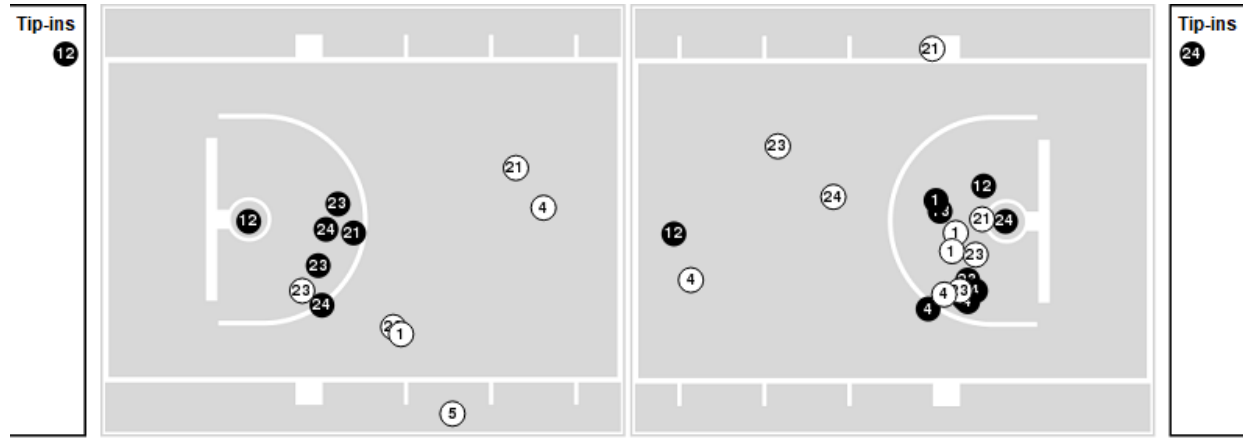
Players => 0, 1, 2, 4, 5, 11, 12, 13, 21, 23, 24, 32FG Types=>AllResults=>All

**Missouri**

**All Field Goals**



**Blow Up Chart**



● Made ○ Missed N - Player Number

Missouri	M/A	%
Field Goals	23/55	42
2 Points	16/36	44
3 Points	7/19	37
Free Throws	15/17	88

Missouri	M/A	%
Points in the Paint	32 (16 / 30)	53
Fast Break Points	11 (6/6)	100
Second Chance Points	17 (11/15)	73
Effective FG%	48	



**Missouri at LSU**

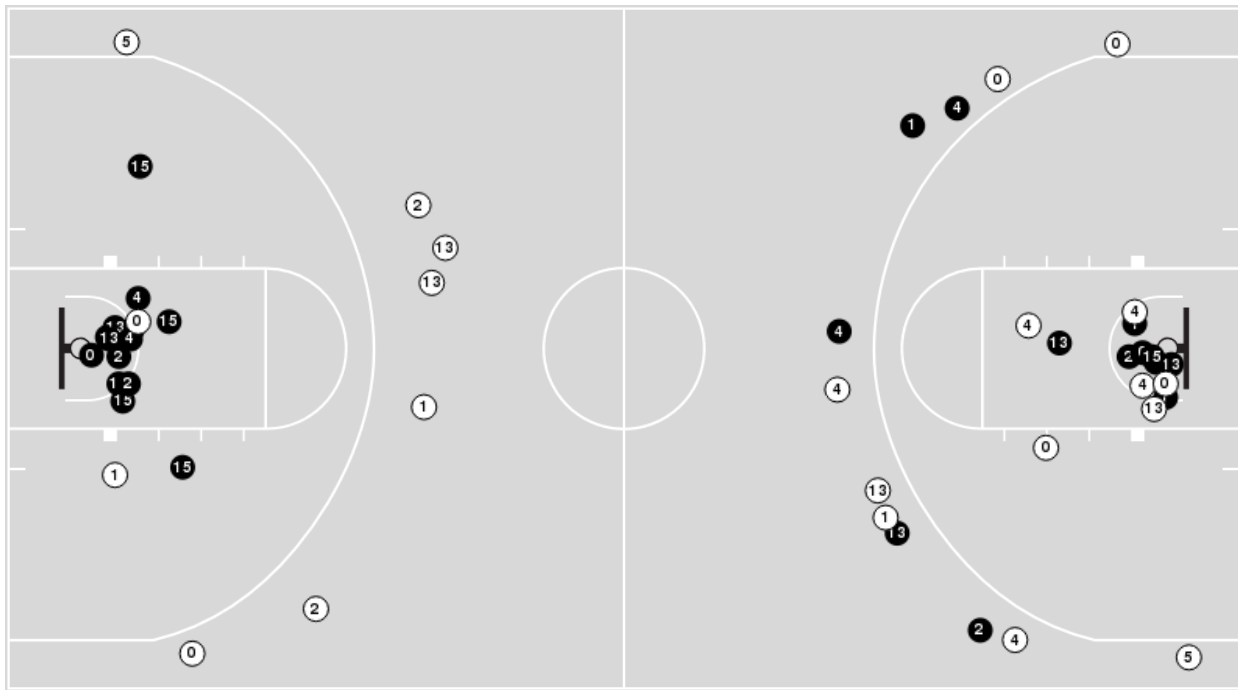
03/10/22 Amalie Arena, Tampa  
2021-22 Men's Basketball

Officials: Don Daily, Patrick Evans, Rob Rorke

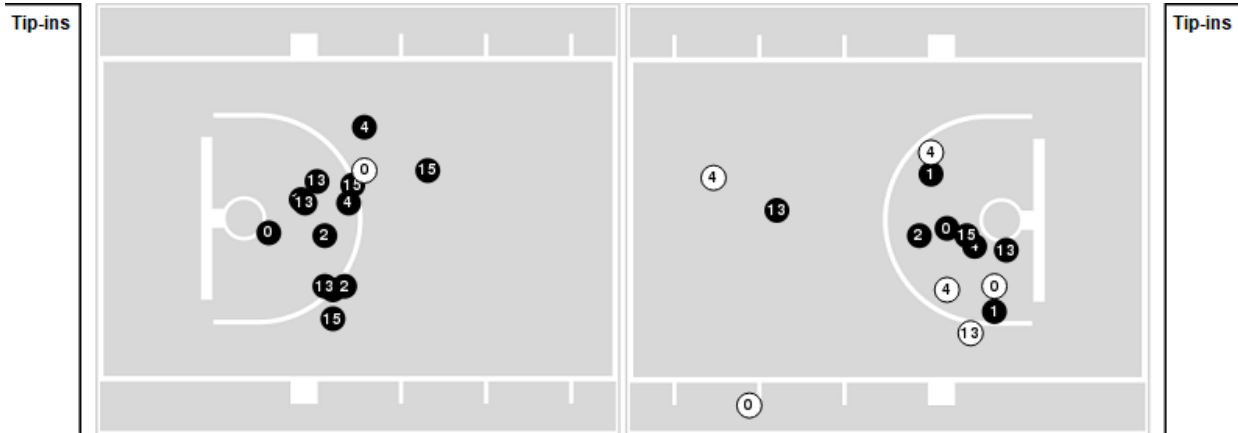
Players => 0, 1, 2, 3, 4, 5, 10, 11, 13, 15, 20, 21, 22, 24, 25, 30, 44FG Types=>AllResults=>All

**LSU**

**All Field Goals**



**Blow Up Chart**



● Made    ○ Missed    N - Player Number

LSU	M/A	%
Field Goals	28/50	56
2 Points	23/31	74
3 Points	5/19	26
Free Throws	15/18	83

LSU	M/A	%
Points in the Paint	42 (21 / 27)	78
Fast Break Points	18 (9/9)	100
Second Chance Points	5 (3/5)	60
Effective FG%	61	



**Missouri at LSU**

03/10/22 Amalie Arena, Tampa  
2021-22 Men's Basketball

**Game Time:** 3:17 PM  
**Game Duration:** 2:01  
**Attendance:** 10,295

**Officials:** Don Daily, Patrick Evans, Rob Rorke

**Missouri**

Lineup	Quarter On	Time On	Quarter Off	Time Off	Time on Court	Score	Score Diff	Reb	Stl	Tov	Ass	PPP
4- Pickett J/ 5- Coleman J/ 12- Gordon D/ 23- Brazile T/ 24- Brown K/	1	20:00	1	16:26	03:34	2-9	-7	2	0	3	0	0.4000
1- Davis A/ 5- Coleman J/ 21- DeGray III R/ 23- Brazile T/ 24- Brown K/	1	16:26	1	15:05	01:21	0-0	0	1	1	1	0	0.0000
1- Davis A/ 5- Coleman J/ 13- Brown K/ 21- DeGray III R/ 24- Brown K/	1	15:05	1	12:59	02:06	2-3	-1	2	1	0	1	0.6667
1- Davis A/ 12- Gordon D/ 21- DeGray III R/ 23- Brazile T/ 24- Brown K/	1	12:59	1	12:27	00:32	0-0	0	0	0	1	0	0.0000
1- Davis A/ 5- Coleman J/ 21- DeGray III R/ 23- Brazile T/ 24- Brown K/	1	12:27	1	11:48	00:39	0-4	-4	1	0	2	0	0.0000
1- Davis A/ 4- Pickett J/ 5- Coleman J/ 21- DeGray III R/ 23- Brazile T/	1	11:48	1	11:48	00:00	0-0	0	0	0	0	0	0.0000
1- Davis A/ 4- Pickett J/ 13- Brown K/ 21- DeGray III R/ 23- Brazile T/	1	11:48	1	10:26	01:22	2-5	-3	1	0	1	1	1.0000
1- Davis A/ 4- Pickett J/ 13- Brown K/ 21- DeGray III R/ 24- Brown K/	1	10:26	1	10:26	00:00	0-0	0	0	0	0	0	0.0000
1- Davis A/ 4- Pickett J/ 5- Coleman J/ 21- DeGray III R/ 24- Brown K/	1	10:26	1	09:18	01:08	0-4	-4	0	0	0	0	0.0000
1- Davis A/ 4- Pickett J/ 5- Coleman J/ 23- Brazile T/ 24- Brown K/	1	09:18	1	07:47	01:31	3-5	-2	3	0	1	0	0.7732
1- Davis A/ 5- Coleman J/ 12- Gordon D/ 23- Brazile T/ 24- Brown K/	1	07:47	1	06:34	01:13	0-0	0	1	0	0	0	0.0000
1- Davis A/ 5- Coleman J/ 12- Gordon D/ 21- DeGray III R/ 23- Brazile T/	1	06:34	1	06:26	00:08	0-2	-2	0	0	0	0	0.0000
1- Davis A/ 12- Gordon D/ 13- Brown K/ 21- DeGray III R/ 23- Brazile T/	1	06:26	1	05:40	00:46	0-0	0	0	0	2	0	0.0000
1- Davis A/ 12- Gordon D/ 13- Brown K/ 21- DeGray III R/ 24- Brown K/	1	05:40	1	01:28	04:12	11-4	7	3	1	3	3	1.5714
1- Davis A/ 12- Gordon D/ 13- Brown K/ 21- DeGray III R/ 23- Brazile T/	1	01:28	2	20:00	01:28	3-3	0	3	0	1	0	1.2295
4- Pickett J/ 12- Gordon D/ 13- Brown K/ 23- Brazile T/ 24- Brown K/	2	20:00	2	16:27	03:33	9-4	5	4	0	0	2	1.5306
1- Davis A/ 4- Pickett J/ 13- Brown K/ 23- Brazile T/ 24- Brown K/	2	16:27	2	15:44	00:43	1-0	1	1	0	1	0	0.6944
1- Davis A/ 4- Pickett J/ 13- Brown K/ 21- DeGray III R/ 23- Brazile T/	2	15:44	2	14:53	00:51	1-2	-1	2	0	2	0	0.4098
1- Davis A/ 4- Pickett J/ 5- Coleman J/ 21- DeGray III R/ 23- Brazile T/	2	14:53	2	14:30	00:23	1-0	1	0	1	1	0	0.6944
4- Pickett J/ 5- Coleman J/ 12- Gordon D/ 21- DeGray III R/ 23- Brazile T/	2	14:30	2	14:16	00:14	0-1	-1	0	0	0	0	0.0000
4- Pickett J/ 5- Coleman J/ 12- Gordon D/ 21- DeGray III R/ 24- Brown K/	2	14:16	2	14:16	00:00	0-0	0	0	0	0	0	0.0000
5- Coleman J/ 12- Gordon D/ 13- Brown K/ 21- DeGray III R/ 24- Brown K/	2	14:16	2	11:58	02:18	0-4	-4	1	0	0	0	0.0000
1- Davis A/ 4- Pickett J/ 12- Gordon D/ 23- Brazile T/ 24- Brown K/	2	11:58	2	08:46	03:12	0-7	-7	1	0	0	0	0.0000
4- Pickett J/ 12- Gordon D/ 13- Brown K/ 21- DeGray III R/ 23- Brazile T/	2	08:46	2	04:27	04:19	14-11	3	2	3	3	3	1.5217
4- Pickett J/ 13- Brown K/ 21- DeGray III R/ 23- Brazile T/ 24- Brown K/	2	04:27	2	02:42	01:45	8-4	4	1	1	0	2	2.3256
4- Pickett J/ 12- Gordon D/ 13- Brown K/ 23- Brazile T/ 24- Brown K/	2	02:42	2	00:29	02:12	9-4	5	1	1	1	3	1.8443
1- Davis A/ 4- Pickett J/ 13- Brown K/ 23- Brazile T/ 24- Brown K/	2	00:29	2	00:00	00:30	2-0	2	2	2	1	1	0.6667



**Missouri at LSU**

03/10/22 Amalie Arena, Tampa  
2021-22 Men's Basketball

**Game Time:** 3:17 PM  
**Game Duration:** 2:01  
**Attendance:** 10,295

**Officials:** Don Daily, Patrick Evans, Rob Rorke

**LSU**

Lineup	Quarter On	Time On	Quarter Off	Time Off	Time on Court	Score	Score Diff	Reb	Stl	Tov	Ass	PPP
0- Murray B/ 1- Pinson X/ 4- Days D/ 5- Wilkinson M/ 15- Reid E/	1	20:00	1	15:05	04:55	9-2	7	4	1	2	1	1.3081
0- Murray B/ 1- Pinson X/ 2- Gaines E/ 4- Days D/ 13- Eason T/	1	15:05	1	12:59	02:06	3-2	1	2	0	1	1	0.7500
1- Pinson X/ 2- Gaines E/ 4- Days D/ 5- Wilkinson M/ 13- Eason T/	1	12:59	1	12:59	00:00	0-0	0	0	0	0	0	0.0000
1- Pinson X/ 2- Gaines E/ 5- Wilkinson M/ 13- Eason T/ 15- Reid E/	1	12:59	1	11:48	01:11	4-0	4	0	1	0	0	1.3889
0- Murray B/ 2- Gaines E/ 5- Wilkinson M/ 13- Eason T/ 15- Reid E/	1	11:48	1	09:25	02:23	9-2	7	2	1	0	3	2.2500
0- Murray B/ 1- Pinson X/ 4- Days D/ 5- Wilkinson M/ 15- Reid E/	1	09:25	1	08:17	01:08	5-2	3	0	0	0	2	2.5000
0- Murray B/ 1- Pinson X/ 3- Fudge A/ 4- Days D/ 15- Reid E/	1	08:17	1	07:47	00:30	0-1	-1	1	0	0	0	0.0000
0- Murray B/ 1- Pinson X/ 3- Fudge A/ 4- Days D/ 13- Eason T/	1	07:47	1	06:34	01:13	0-0	0	2	0	1	0	0.0000
1- Pinson X/ 2- Gaines E/ 3- Fudge A/ 4- Days D/ 13- Eason T/	1	06:34	1	05:16	01:18	2-0	2	0	0	2	0	0.6944
0- Murray B/ 2- Gaines E/ 4- Days D/ 5- Wilkinson M/ 13- Eason T/	1	05:16	1	04:04	01:12	2-3	-1	1	0	1	1	1.0000
0- Murray B/ 2- Gaines E/ 5- Wilkinson M/ 13- Eason T/ 15- Reid E/	1	04:04	1	03:02	01:02	0-6	-6	0	0	1	0	0.0000
0- Murray B/ 1- Pinson X/ 2- Gaines E/ 4- Days D/ 13- Eason T/	1	03:02	2	20:00	03:02	5-5	0	0	1	0	1	1.0246
0- Murray B/ 1- Pinson X/ 4- Days D/ 5- Wilkinson M/ 15- Reid E/	2	20:00	2	16:27	03:33	4-9	-5	3	0	2	1	0.8000
0- Murray B/ 1- Pinson X/ 2- Gaines E/ 4- Days D/ 15- Reid E/	2	16:27	2	15:44	00:43	0-1	-1	0	1	1	0	0.0000
0- Murray B/ 1- Pinson X/ 2- Gaines E/ 4- Days D/ 13- Eason T/	2	15:44	2	14:53	00:51	2-1	1	0	1	0	1	1.0000
0- Murray B/ 1- Pinson X/ 2- Gaines E/ 4- Days D/ 15- Reid E/	2	14:53	2	14:16	00:37	1-1	0	0	0	1	0	0.6944
0- Murray B/ 1- Pinson X/ 2- Gaines E/ 13- Eason T/ 15- Reid E/	2	14:16	2	11:52	02:24	5-0	5	4	0	0	1	1.5060
0- Murray B/ 2- Gaines E/ 5- Wilkinson M/ 13- Eason T/ 15- Reid E/	2	11:52	2	08:46	03:06	6-0	6	4	0	0	2	1.5000
1- Pinson X/ 2- Gaines E/ 4- Days D/ 5- Wilkinson M/ 15- Reid E/	2	08:46	2	08:09	00:37	2-2	0	0	0	0	0	2.0000
1- Pinson X/ 2- Gaines E/ 4- Days D/ 5- Wilkinson M/ 13- Eason T/	2	08:09	2	06:34	01:35	4-8	-4	0	0	0	1	1.3333
0- Murray B/ 1- Pinson X/ 4- Days D/ 5- Wilkinson M/ 13- Eason T/	2	06:34	2	04:23	02:11	5-6	-1	0	2	4	1	0.7911
0- Murray B/ 1- Pinson X/ 2- Gaines E/ 5- Wilkinson M/ 13- Eason T/	2	04:23	2	03:00	01:23	2-6	-4	0	0	0	1	1.0000
0- Murray B/ 1- Pinson X/ 2- Gaines E/ 4- Days D/ 13- Eason T/	2	03:00	2	00:00	03:00	6-11	-5	1	1	3	1	0.8197



**Missouri at LSU**

03/10/22 Amalie Arena, Tampa  
2021-22 Men's Basketball

**Game Time:** 3:17 PM  
**Game Duration:** 2:01  
**Attendance:** 10,295

**Officials:** Don Daily, Patrick Evans, Rob Rorke

**Missouri**

Lineup	Time	Score	Score Diff	Pts/Min	Reb	Stl	Tov	Ass	PPP
4- Pickett J/ 12- Gordon D/ 13- Brown K/ 23- Brazile T/ 24- Brown K/	05:45	18-8	10	3.1304	5	1	1	5	1.6729
4- Pickett J/ 12- Gordon D/ 13- Brown K/ 21- DeGray III R/ 23- Brazile T/	04:19	14-11	3	3.2432	2	3	3	3	1.5217
1- Davis A/ 12- Gordon D/ 13- Brown K/ 21- DeGray III R/ 24- Brown K/	04:12	11-4	7	2.6190	3	1	3	3	1.5714
4- Pickett J/ 5- Coleman J/ 12- Gordon D/ 23- Brazile T/ 24- Brown K/	03:34	2-9	-7	0.5607	2	0	3	0	0.4000
1- Davis A/ 4- Pickett J/ 12- Gordon D/ 23- Brazile T/ 24- Brown K/	03:12	0-7	-7	0.0000	1	0	0	0	0.0000
5- Coleman J/ 12- Gordon D/ 13- Brown K/ 21- DeGray III R/ 24- Brown K/	02:18	0-4	-4	0.0000	1	0	0	0	0.0000
1- Davis A/ 12- Gordon D/ 13- Brown K/ 21- DeGray III R/ 23- Brazile T/	02:14	3-3	0	1.3433	3	0	3	0	0.6757
1- Davis A/ 4- Pickett J/ 13- Brown K/ 21- DeGray III R/ 23- Brazile T/	02:13	3-7	-4	1.3534	3	0	3	1	0.6757
1- Davis A/ 5- Coleman J/ 13- Brown K/ 21- DeGray III R/ 24- Brown K/	02:06	2-3	-1	0.9524	2	1	0	1	0.6667
1- Davis A/ 5- Coleman J/ 21- DeGray III R/ 23- Brazile T/ 24- Brown K/	02:00	0-4	-4	0.0000	2	1	3	0	0.0000
4- Pickett J/ 13- Brown K/ 21- DeGray III R/ 23- Brazile T/ 24- Brown K/	01:45	8-4	4	4.5714	1	1	0	2	2.3256
1- Davis A/ 4- Pickett J/ 5- Coleman J/ 23- Brazile T/ 24- Brown K/	01:31	3-5	-2	1.9780	3	0	1	0	0.7732
1- Davis A/ 5- Coleman J/ 12- Gordon D/ 23- Brazile T/ 24- Brown K/	01:13	0-0	0	0.0000	1	0	0	0	0.0000
1- Davis A/ 4- Pickett J/ 13- Brown K/ 23- Brazile T/ 24- Brown K/	01:13	3-0	3	2.4658	3	2	2	1	0.6757
1- Davis A/ 4- Pickett J/ 5- Coleman J/ 21- DeGray III R/ 24- Brown K/	01:08	0-4	-4	0.0000	0	0	0	0	0.0000
1- Davis A/ 12- Gordon D/ 21- DeGray III R/ 23- Brazile T/ 24- Brown K/	00:32	0-0	0	0.0000	0	0	1	0	0.0000
1- Davis A/ 4- Pickett J/ 5- Coleman J/ 21- DeGray III R/ 23- Brazile T/	00:23	1-0	1	2.6087	0	1	1	0	0.6944
4- Pickett J/ 5- Coleman J/ 12- Gordon D/ 21- DeGray III R/ 23- Brazile T/	00:14	0-1	-1	0.0000	0	0	0	0	0.0000
1- Davis A/ 5- Coleman J/ 12- Gordon D/ 21- DeGray III R/ 23- Brazile T/	00:08	0-2	-2	0.0000	0	0	0	0	0.0000
1- Davis A/ 4- Pickett J/ 13- Brown K/ 21- DeGray III R/ 24- Brown K/	00:00	0-0	0	NaN	0	0	0	0	0.0000
4- Pickett J/ 5- Coleman J/ 12- Gordon D/ 21- DeGray III R/ 24- Brown K/	00:00	0-0	0	NaN	0	0	0	0	0.0000



**Missouri at LSU**

03/10/22 Amalie Arena, Tampa  
2021-22 Men's Basketball

**Game Time:** 3:17 PM  
**Game Duration:** 2:01  
**Attendance:** 10,295

**Officials:** Don Daily, Patrick Evans, Rob Rorke

**LSU**

Lineup	Time	Score	Score Diff	Pts/Min	Reb	Stl	Tov	Ass	PPP
0- Murray B/ 1- Pinson X/ 4- Days D/ 5- Wilkinson M/ 15- Reid E/	09:36	18-13	5	1.8750	7	1	4	4	1.2968
0- Murray B/ 1- Pinson X/ 2- Gaines E/ 4- Days D/ 13- Eason T/	08:59	16-19	-3	1.7811	3	3	4	4	0.8791
0- Murray B/ 2- Gaines E/ 5- Wilkinson M/ 13- Eason T/ 15- Reid E/	06:31	15-8	7	2.3018	6	1	1	5	1.5000
0- Murray B/ 1- Pinson X/ 2- Gaines E/ 13- Eason T/ 15- Reid E/	02:24	5-0	5	2.0833	4	0	0	1	1.5060
0- Murray B/ 1- Pinson X/ 4- Days D/ 5- Wilkinson M/ 13- Eason T/	02:11	5-6	-1	2.2901	0	2	4	1	0.7911
1- Pinson X/ 2- Gaines E/ 4- Days D/ 5- Wilkinson M/ 13- Eason T/	01:35	4-8	-4	2.5263	0	0	0	1	1.3333
0- Murray B/ 1- Pinson X/ 2- Gaines E/ 5- Wilkinson M/ 13- Eason T/	01:23	2-6	-4	1.4458	0	0	0	1	1.0000
0- Murray B/ 1- Pinson X/ 2- Gaines E/ 4- Days D/ 15- Reid E/	01:20	1-2	-1	0.7500	0	1	2	0	0.2907
1- Pinson X/ 2- Gaines E/ 3- Fudge A/ 4- Days D/ 13- Eason T/	01:18	2-0	2	1.5385	0	0	2	0	0.6944
0- Murray B/ 1- Pinson X/ 3- Fudge A/ 4- Days D/ 13- Eason T/	01:13	0-0	0	0.0000	2	0	1	0	0.0000
0- Murray B/ 2- Gaines E/ 4- Days D/ 5- Wilkinson M/ 13- Eason T/	01:12	2-3	-1	1.6667	1	0	1	1	1.0000
1- Pinson X/ 2- Gaines E/ 5- Wilkinson M/ 13- Eason T/ 15- Reid E/	01:11	4-0	4	3.3803	0	1	0	0	1.3889
1- Pinson X/ 2- Gaines E/ 4- Days D/ 5- Wilkinson M/ 15- Reid E/	00:37	2-2	0	3.2432	0	0	0	0	2.0000
0- Murray B/ 1- Pinson X/ 3- Fudge A/ 4- Days D/ 15- Reid E/	00:30	0-1	-1	0.0000	1	0	0	0	0.0000