



Officials: Pat Adams, Terry Wymer, Owen Shortt

LSU - 76

Record: 20-10 (8-9)

NO.	Name	Min	FG	3P	FT	Rebounds			Fouls		TP	AS	TO	ST	Blocks		+/-
			M-A	M-A	M-A	OR	DR	TOT	PF	FD					BS	BA	
4	Darius Days	F 33:26	7-12	3-5	2-2	2	4	6	3	1	19	1	2	3	0	0	6
5	Mwani Wilkinson	F 36:38	1-2	1-2	0-0	1	3	4	5	0	3	3	0	1	0	0	1
15	Efton Reid	C 16:58	1-3	0-1	0-0	3	5	8	4	1	2	0	2	0	1	0	-3
0	Brandon Murray	G 36:23	2-11	0-5	2-3	2	1	3	0	3	6	1	0	2	0	1	1
1	Xavier Pinson	G 31:33	5-21	0-7	2-2	3	2	5	4	1	12	5	3	1	0	1	4
13	Tari Eason	17:45	6-14	2-6	10-10	4	3	7	5	7	24	1	2	2	1	1	9
2	Eric Gaines	19:31	3-6	0-1	0-0	1	0	1	2	1	6	2	0	0	0	1	-15
24	Shareef O'Neal	07:08	1-3	0-1	2-2	0	2	2	1	1	4	0	0	0	1	0	-6
11	Justice Williams	00:38	0-0	0-0	0-0	0	0	0	1	0	0	0	0	0	0	0	-2
Team						6	1	7			0		1				
<b>Totals</b>			26-72	6-28	18-19	22	21	43	25	15	76	13	10	9	3	4	-1

Shooting By Period		
1st FG%	14-34	41.2%
3PT%	3-14	21.4%
FT%	4-4	100%
2nd FG%	12-38	31.6%
3PT%	3-14	21.4%
FT%	14-15	93.3%
GM FG%	26-72	36.1%
3PT%	6-28	21.4%
FT%	18-19	94.7%

Dead Ball Rebounds: 0, 0

Technical Fouls: NONE

Arkansas - 77

Record: 24-6 (13-4)

NO.	Name	Min	FG	3P	FT	Rebounds			Fouls		TP	AS	TO	ST	Blocks		+/-
			M-A	M-A	M-A	OR	DR	TOT	PF	FD					BS	BA	
3	Trey Wade	F 08:30	0-1	0-0	0-0	0	0	0	0	0	0	0	0	0	0	0	-6
10	Jaylin Williams	F 34:28	6-11	0-2	7-8	0	10	10	5	8	19	1	3	2	1	0	0
0	Stanley Umude	G 39:20	8-16	3-8	4-4	1	4	5	1	3	23	1	1	1	1	0	2
1	JD Notae	G 38:38	3-12	2-6	4-4	0	7	7	2	4	12	5	4	0	1	2	1
5	Au'Diese Toney	G 38:35	6-9	0-1	6-6	4	0	4	2	3	18	1	1	0	0	0	1
4	Davonte Davis	30:46	1-4	0-3	2-4	0	1	1	3	5	4	4	3	0	0	0	5
20	Kamani Johnson	05:48	0-0	0-0	1-2	1	0	1	2	2	1	0	0	0	1	0	1
11	Chris Lykes	03:55	0-1	0-1	0-0	0	1	1	0	0	0	0	0	0	0	1	1
Team						4	1	5			0		0				
<b>Totals</b>			24-54	5-21	24-28	10	24	34	15	25	77	12	12	3	4	3	1

Shooting By Period		
1st FG%	12-31	38.7%
3PT%	2-14	14.3%
FT%	9-11	81.8%
2nd FG%	12-23	52.2%
3PT%	3-7	42.9%
FT%	15-17	88.2%
GM FG%	24-54	44.4%
3PT%	5-21	23.8%
FT%	24-28	85.7%

Dead Ball Rebounds: 3, 1

Technical Fouls: NONE

	LSU	ARK
Biggest lead	7 (2 <sup>nd</sup> 18:31)	5 (1 <sup>st</sup> 19:10)
Best Scoring Run	7 (2 <sup>nd</sup> 18:31)	6 (2 <sup>nd</sup> 13:56)
Lead Changes	8	
Times Tied	6	
Time with Lead	17:59	20:09

Points from	LSU	ARK
Turnovers	13	16
Paint	28	32
Second Chance	21	11
Fast Breaks	7	11
Bench	34	5

	Period by Period Scoring		
	1st	2nd	TOT
LSU	35	41	76
ARK	35	42	77



**LSU at Arkansas**

03/02/22 Bud Walton Arena, Fayetteville, Ark.  
2021-22 Men's Basketball

**Game Time:** 8:00 PM  
**Game Duration:** 2:16  
**Attendance:** 19,200

**Officials:** Pat Adams, Terry Wymer, Owen Shortt

**Period 1**

**Quarter Starters:**

<b>ARK</b>	0 Umude S	1 Notae J	3 Wade T	5 Toney A	10 Williams J
<b>LSU</b>	0 Murray B	1 Pinson X	4 Days D	5 Wilkinson M	15 Reid E

Game Time	ARK	Score	Diff	LSU
20:00	10 WILLIAMS J jumpball won			15 REID E jumpball lost
19:35	10 WILLIAMS J 2pt FG outside the paint, jump shot made (2)	<b>2-0</b>	<b>2</b>	
19:16	10 WILLIAMS J steal (1)			4 DAYS D turnover bad pass (1)
19:10	1 NOTAE J 3pt FG fast break from turnover, pull up jump shot made (3)	<b>5-0</b>	<b>5</b>	
18:47		<b>5-2</b>	<b>3</b>	4 DAYS D 2pt FG in the paint, layup made (2)
18:47				1 PINSON X assist (1)
18:35	10 WILLIAMS J turnover bad pass (1)			
18:28		<b>5-4</b>	<b>1</b>	1 PINSON X 2pt FG fast break from turnover in the paint, layup made (2)
18:14	1 NOTAE J foul drawn (1)			1 PINSON X foul personal (1 - 1)
18:08	10 WILLIAMS J 2pt FG in the paint, layup made (4)	<b>7-4</b>	<b>3</b>	
17:50				1 PINSON X 3pt FG , jump shot missed
17:47				offensive rebound (1)
17:46				turnover sec 5 (2)
17:31	3 WADE T 2pt FG from turnover in the paint, layup missed			
17:28				15 REID E defensive rebound (1)
17:25				0 MURRAY B 2pt FG in the paint, layup missed
17:20				offensive rebound (3)
17:11				1 PINSON X 2pt FG second chance in the paint, floating jump shot missed
17:07				1 PINSON X offensive rebound (1)
17:07		<b>7-6</b>	<b>1</b>	1 PINSON X 2pt FG second chance in the paint, layup made (4)
16:56	0 UMUDE S 3pt FG , jump shot missed			
16:52				15 REID E defensive rebound (2)
16:43		<b>7-8</b>	<b>-1</b>	15 REID E 2pt FG outside the paint, pull up jump shot made (2)
16:43				1 PINSON X assist (2)
16:14	5 TONEY A foul drawn (1)			4 DAYS D foul shooting (1 - 2)
16:14	5 TONEY A free throw 1 - 2 made (1)	<b>8-8</b>	<b>0</b>	
16:14	5 TONEY A free throw 2 - 2 made (2)	<b>9-8</b>	<b>1</b>	
16:05				15 REID E turnover lost ball (1)
15:51	0 UMUDE S 3pt FG from turnover, jump shot made (3)	<b>12-8</b>	<b>4</b>	
15:51	1 NOTAE J assist (1)			
15:36				1 PINSON X 2pt FG in the paint, layup missed
15:34				1 PINSON X offensive rebound (2)
15:31		<b>12-11</b>	<b>1</b>	4 DAYS D 3pt FG second chance, jump shot made (5)
15:31				5 WILKINSON M assist (1)
15:13	10 WILLIAMS J 2pt FG in the paint, turnaround jump shot missed			
15:10				15 REID E defensive rebound (3)
14:46				15 REID E 3pt FG , jump shot missed
14:42	10 WILLIAMS J defensive rebound (1)			
14:38	1 NOTAE J 3pt FG , pull up jump shot missed			
14:34				5 WILKINSON M defensive rebound (1)



**LSU at Arkansas**

03/02/22 Bud Walton Arena, Fayetteville, Ark.  
2021-22 Men's Basketball

**Game Time:** 8:00 PM  
**Game Duration:** 2:16  
**Attendance:** 19,200

**Officials:** Pat Adams, Terry Wymer, Owen Shortt

Game Time	ARK	Score	Diff	LSU
14:16				0 MURRAY B 3pt FG , jump shot missed
14:13				offensive rebound (9)
14:13	Timeout media			
14:13	3 WADE T substitution out			
14:13	4 DAVIS D substitution in			
14:13				15 REID E substitution out
14:13				13 EASON T substitution in
13:59				13 EASON T 3pt FG second chance , jump shot missed
13:55	10 WILLIAMS J defensive rebound (2)			
13:45	5 TONEY A 2pt FG in the paint, layup made (4)	<b>14-11</b>	<b>3</b>	
13:45	10 WILLIAMS J assist (1)			
13:27				1 PINSON X 3pt FG , jump shot missed
13:24	10 WILLIAMS J defensive rebound (3)			
13:12	10 WILLIAMS J foul drawn (1)			13 EASON T foul shooting (1 - 3)
13:12	10 WILLIAMS J free throw 1 - 2 made (5)	<b>15-11</b>	<b>4</b>	
13:12	0 UMUDE S substitution out			
13:12	20 JOHNSON K substitution in			
13:12				1 PINSON X substitution out
13:12				2 GAINES E substitution in
13:12	10 WILLIAMS J free throw 2 - 2 made (6)	<b>16-11</b>	<b>5</b>	
12:50		<b>16-13</b>	<b>3</b>	2 GAINES E 2pt FG outside the paint, pull up jump shot made (2)
12:34	1 NOTAE J 3pt FG , jump shot missed			
12:32				13 EASON T defensive rebound (1)
12:32	20 JOHNSON K foul personal (1 - 1)			13 EASON T foul drawn (1)
12:32	10 WILLIAMS J substitution out			
12:32	0 UMUDE S substitution in			
12:14		<b>16-15</b>	<b>1</b>	4 DAYS D 2pt FG in the paint, hook shot made (7)
12:03	1 NOTAE J 2pt FG in the paint, layup missed			
12:02	offensive rebound (4)			
12:01	1 NOTAE J substitution out			
12:01	11 LYKES C substitution in			
12:01				5 WILKINSON M substitution out
12:01				1 PINSON X substitution in
11:54	5 TONEY A 3pt FG second chance, jump shot missed			
11:52	offensive dead ball rebound (1)			
11:52	20 JOHNSON K foul drawn (1)			2 GAINES E foul personal (1 - 4)
11:52	Timeout media			
11:52	5 TONEY A substitution out			
11:52	1 NOTAE J substitution in			
11:43	4 DAVIS D 3pt FG second chance, jump shot missed			
11:39				4 DAYS D defensive rebound (1)
11:27				4 DAYS D turnover lost ball (2)
11:27	20 JOHNSON K substitution out			
11:27	10 WILLIAMS J substitution in			
11:27				4 DAYS D substitution out
11:27				24 O'NEAL S substitution in
11:08	0 UMUDE S 3pt FG from turnover, jump shot missed			
11:05				24 O'NEAL S defensive rebound (1)



**LSU at Arkansas**

03/02/22 Bud Walton Arena, Fayetteville, Ark.  
2021-22 Men's Basketball

**Game Time:** 8:00 PM  
**Game Duration:** 2:16  
**Attendance:** 19,200

**Officials:** Pat Adams, Terry Wymer, Owen Shortt

Game Time	ARK	Score	Diff	LSU
10:54				24 O'NEAL S 3pt FG , jump shot missed
10:51	1 NOTAE J defensive rebound (1)			
10:39	4 DAVIS D turnover bad pass (1)			13 EASON T steal (1)
10:30				1 PINSON X 3pt FG from turnover, jump shot missed
10:28	defensive dead ball rebound (2)			
10:27	4 DAVIS D foul drawn (1)			24 O'NEAL S foul personal (1 - 5)
10:27	4 DAVIS D foul flagrant 1 (1 - 2)			24 O'NEAL S foul drawn (1)
10:27	4 DAVIS D turnover offensive (2)			
10:27	4 DAVIS D substitution out			
10:27	5 TONEY A substitution in			
10:27		<b>16-16</b>	<b>0</b>	24 O'NEAL S free throw 1 - 2 made (1)
10:27		<b>16-17</b>	<b>-1</b>	24 O'NEAL S free throw 2 - 2 made (2)
10:27				24 O'NEAL S substitution out
10:27				15 REID E substitution in
10:25				0 MURRAY B 3pt FG , jump shot missed
10:22	1 NOTAE J defensive rebound (2)			
10:10	10 WILLIAMS J 2pt FG in the paint, layup made (8)	<b>18-17</b>	<b>1</b>	
10:10	10 WILLIAMS J foul drawn (2)			15 REID E foul shooting (1 - 6)
10:10	10 WILLIAMS J free throw 1 - 1 made (9)	<b>19-17</b>	<b>2</b>	
10:10				15 REID E substitution out
10:10				4 DAYS D substitution in
09:51				1 PINSON X 2pt FG outside the paint, jump shot blocked
09:51	1 NOTAE J block (1)			
09:46	11 LYKES C defensive rebound (1)			
09:43	10 WILLIAMS J 3pt FG , jump shot missed			
09:40	offensive rebound (8)			
09:20	5 TONEY A turnover bad pass (1)			4 DAYS D steal (1)
09:16		<b>19-19</b>	<b>0</b>	2 GAINES E 2pt FG fast break from turnover in the paint, dunk, made (4)
09:16				13 EASON T assist (1)
08:48	10 WILLIAMS J foul drawn (3)			4 DAYS D foul shooting (2 - 7)
08:48	10 WILLIAMS J free throw 1 - 2 made (10)	<b>20-19</b>	<b>1</b>	
08:48	11 LYKES C substitution out			
08:48	4 DAVIS D substitution in			
08:48				0 MURRAY B substitution out
08:48				4 DAYS D substitution out
08:48				5 WILKINSON M substitution in
08:48				24 O'NEAL S substitution in
08:48	10 WILLIAMS J free throw 2 - 2 made (11)	<b>21-19</b>	<b>2</b>	
08:22				24 O'NEAL S 2pt FG in the paint, turnaround jump shot missed
08:18	10 WILLIAMS J defensive rebound (4)			
08:14	1 NOTAE J foul offensive (1 - 3)			2 GAINES E foul drawn (1)
08:14	1 NOTAE J turnover offensive (1)			
08:03				13 EASON T 3pt FG from turnover, jump shot missed
08:00	10 WILLIAMS J defensive rebound (5)			
07:54	0 UMUDE S 2pt FG in the paint, layup missed			
07:50	5 TONEY A offensive rebound (1)			
07:50	5 TONEY A 2pt FG second chance in the paint, layup missed			
07:47	0 UMUDE S offensive rebound (1)			



**LSU at Arkansas**

03/02/22 Bud Walton Arena, Fayetteville, Ark.  
2021-22 Men's Basketball

**Game Time:** 8:00 PM  
**Game Duration:** 2:16  
**Attendance:** 19,200

**Officials:** Pat Adams, Terry Wymer, Owen Shortt

Game Time	ARK	Score	Diff	LSU
07:47	0 UMUDE S 2pt FG second chance in the paint, dunk, made (5)	<b>23-19</b>	<b>4</b>	
07:38		<b>23-22</b>	<b>1</b>	13 EASON T 3pt FG , pull up jump shot made (3)
07:38				1 PINSON X assist (3)
07:19	0 UMUDE S 3pt FG , jump shot missed			
07:15	5 TONEY A offensive rebound (2)			
07:15	5 TONEY A foul drawn (2)			5 WILKINSON M foul shooting (1 - 8)
07:15	Timeout media			
07:15				2 GAINES E substitution out
07:15				0 MURRAY B substitution in
07:15	5 TONEY A free throw 1 - 2 made (5)	<b>24-22</b>	<b>2</b>	
07:15	5 TONEY A free throw 2 - 2 made (6)	<b>25-22</b>	<b>3</b>	
06:59	0 UMUDE S steal (1)			13 EASON T turnover bad pass (1)
06:54	5 TONEY A 2pt FG fast break from turnover in the paint, dunk, made (8)	<b>27-22</b>	<b>5</b>	
06:38	5 TONEY A foul shooting (1 - 4)			1 PINSON X foul drawn (1)
06:38		<b>27-23</b>	<b>4</b>	1 PINSON X free throw 1 - 2 made (5)
06:38				13 EASON T substitution out
06:38				4 DAYS D substitution in
06:38		<b>27-24</b>	<b>3</b>	1 PINSON X free throw 2 - 2 made (6)
06:32	0 UMUDE S 2pt FG fast break in the paint, dunk, made (7)	<b>29-24</b>	<b>5</b>	
06:32	4 DAVIS D assist (1)			
06:13				4 DAYS D 2pt FG outside the paint, floating jump shot missed
06:10	1 NOTAE J defensive rebound (3)			
06:07	10 WILLIAMS J 3pt FG , pull up jump shot missed			
06:04				5 WILKINSON M defensive rebound (2)
05:45				1 PINSON X 2pt FG in the paint, jump shot missed
05:44	defensive rebound (15)			
05:44				24 O'NEAL S substitution out
05:44				13 EASON T substitution in
05:32	1 NOTAE J 2pt FG outside the paint, step back jump shot missed			
05:29				0 MURRAY B defensive rebound (1)
05:20				4 DAYS D 3pt FG , jump shot missed
05:14	10 WILLIAMS J defensive rebound (6)			
05:12	10 WILLIAMS J turnover lost ball (2)			5 WILKINSON M steal (1)
05:11	10 WILLIAMS J foul drawn (4)			13 EASON T foul offensive (2 - 9)
05:11				13 EASON T turnover offensive (2)
04:56	0 UMUDE S turnover bad pass (1)			4 DAYS D steal (2)
04:45		<b>29-26</b>	<b>3</b>	13 EASON T 2pt FG from turnover outside the paint, pull up jump shot made (5)
04:45				1 PINSON X assist (4)
04:35				13 EASON T substitution out
04:35				15 REID E substitution in
04:17	0 UMUDE S 2pt FG outside the paint, jump shot missed			
04:11				15 REID E defensive rebound (4)
04:04	jump ball situation			
03:47		<b>29-28</b>	<b>1</b>	0 MURRAY B 2pt FG outside the paint, jump shot made (2)
03:36	4 DAVIS D 3pt FG , jump shot missed			
03:33				5 WILKINSON M defensive rebound (3)
03:17				0 MURRAY B 2pt FG outside the paint, jump shot missed



**LSU at Arkansas**

03/02/22 Bud Walton Arena, Fayetteville, Ark.  
2021-22 Men's Basketball

**Game Time:** 8:00 PM  
**Game Duration:** 2:16  
**Attendance:** 19,200

**Officials:** Pat Adams, Terry Wymer, Owen Shortt

Game Time	ARK	Score	Diff	LSU
03:11	10 WILLIAMS J defensive rebound (7)			
03:06	10 WILLIAMS J 2pt FG in the paint, pull up jump shot made (13)	<b>31-28</b>	<b>3</b>	
03:06	5 TONEY A assist (1)			
02:43		<b>31-30</b>	<b>1</b>	1 PINSON X 2pt FG outside the paint, pull up jump shot made (8)
02:16	5 TONEY A 2pt FG in the paint, layup made (10)	<b>33-30</b>	<b>3</b>	
02:16	4 DAVIS D assist (2)			
01:52		<b>33-32</b>	<b>1</b>	1 PINSON X 2pt FG outside the paint, jump shot made (10)
01:34	4 DAVIS D foul drawn (2)			15 REID E foul personal (2 - 10)
01:34	Timeout media			
01:34				15 REID E substitution out
01:34				13 EASON T substitution in
01:34	4 DAVIS D free throw 1 - 2 missed			
01:34	offensive dead ball rebound (3)			
01:34	4 DAVIS D free throw 2 - 2 missed			
01:33				13 EASON T defensive rebound (2)
01:17				13 EASON T 2pt FG outside the paint, pull up jump shot missed
01:14				5 WILKINSON M offensive rebound (4)
01:11				0 MURRAY B 3pt FG second chance, jump shot missed
01:04				0 MURRAY B offensive rebound (2)
01:01		<b>33-35</b>	<b>-2</b>	4 DAYS D 3pt FG second chance, jump shot made (10)
01:01				0 MURRAY B assist (1)
01:01				Timeout 30 Sec
01:01				4 DAYS D substitution out
01:01				13 EASON T substitution out
01:01				2 GAINES E substitution in
01:01				24 O'NEAL S substitution in
00:44	0 UMUDE S 3pt FG , jump shot missed			
00:41				24 O'NEAL S defensive rebound (2)
00:17	10 WILLIAMS J foul drawn (5)			1 PINSON X foul offensive (2 - 11)
00:17				1 PINSON X turnover offensive (1)
00:17	4 DAVIS D substitution out			
00:17	11 LYKES C substitution in			
00:17				1 PINSON X substitution out
00:17				11 WILLIAMS J substitution in
00:02	11 LYKES C 3pt FG from turnover, jump shot blocked			
00:02				24 O'NEAL S block (1)
00:01	offensive rebound (18)			
00:00	0 UMUDE S 2pt FG from turnover second chance outside the paint, jump shot made (9)	<b>35-35</b>	<b>0</b>	
00:00	1 NOTAE J assist (2)			
<b>END OF PERIOD</b>				
<b>ARK 35-35 LSU</b>				



**LSU at Arkansas**

03/02/22 Bud Walton Arena, Fayetteville, Ark.  
2021-22 Men's Basketball

Game Time: 8:00 PM  
Game Duration: 2:16  
Attendance: 19,200

Officials: Pat Adams, Terry Wymer, Owen Shortt

**LSU - 35**

NO.	Name	Min	FG			Rebounds			Fouls		TP	AS	TO	ST	Blocks		+/-
			M-A	M-A	M-A	OR	DR	TOT	PF	FD					BS	BA	
4	Darius Days	F 15:32	4-6	2-3	0-0	0	1	1	2	0	10	0	2	2	0	0	6
5	Mwani Wilkinson	F 16:47	0-0	0-0	0-0	1	3	4	1	0	0	1	0	1	0	0	
15	Efton Reid	C 09:05	1-2	0-1	0-0	0	4	4	2	0	2	0	1	0	0	-2	
0	Brandon Murray	G 18:27	1-6	0-3	0-0	1	1	2	0	0	2	1	0	0	0	0	
1	Xavier Pinson	G 18:31	4-11	0-3	2-2	2	0	2	2	1	10	4	1	0	0	-1	
13	Tari Eason	09:17	2-5	1-3	0-0	0	2	2	2	1	5	1	2	1	0	2	
2	Eric Gaines	06:58	2-2	0-0	0-0	0	0	0	1	1	4	0	0	0	0	1	
24	Shareef O'Neal	05:05	0-2	0-1	2-2	0	2	2	1	1	2	0	0	0	1	-4	
11	Justice Williams	00:18	0-0	0-0	0-0	0	0	0	0	0	0	0	0	0	0	-2	
Team						3	0	3			0		1				
<b>Totals</b>			14-34	3-14	4-4	7	13	20	11	4	35	7	7	4	1	1	0

Shooting By Period		
1st FG%	14-34	41.2%
3PT%	3-14	21.4%
FT%	4-4	100%
GM FG%	14-34	41.2%
3PT%	3-14	21.4%
FT%	4-4	100.0%

Dead Ball Rebounds: 0, 0

Technical Fouls::NONE

**Arkansas - 35**

NO.	Name	Min	FG			Rebounds			Fouls		TP	AS	TO	ST	Blocks		+/-
			M-A	M-A	M-A	OR	DR	TOT	PF	FD					BS	BA	
3	Trey Wade	F 05:47	0-1	0-0	0-0	0	0	0	0	0	0	0	0	0	0	0	1
10	Jaylin Williams	F 18:55	4-7	0-2	5-5	0	7	7	0	5	13	1	2	1	0	0	2
0	Stanley Umude	G 19:20	4-10	1-5	0-0	1	0	1	0	0	9	0	1	1	0	0	1
1	JD Notae	G 19:51	1-5	1-3	0-0	0	3	3	1	1	3	2	1	0	1	0	0
5	Au'Diese Toney	G 18:35	3-5	0-1	4-4	2	0	2	1	2	10	1	1	0	0	0	0
4	Davonte Davis	12:16	0-2	0-2	0-2	0	0	0	1	2	0	2	2	0	0	-3	
20	Kamani Johnson	01:45	0-0	0-0	0-0	0	0	0	1	1	0	0	0	0	0	-3	
11	Chris Lykes	03:31	0-1	0-1	0-0	0	1	1	0	0	0	0	0	0	0	2	
Team						3	1	4			0		0				
<b>Totals</b>			12-31	2-14	9-11	6	12	18	4	11	35	6	7	2	1	1	0

Shooting By Period		
1st FG%	12-31	38.7%
3PT%	2-14	14.3%
FT%	9-11	81.8%
GM FG%	12-31	38.7%
3PT%	2-14	14.3%
FT%	9-11	81.8%

Dead Ball Rebounds: 2, 1

Technical Fouls::NONE

	LSU	ARK
Biggest lead	2 (1st 1:01)	5 (1st 19:10)
Best Scoring Run	6 (1st 10:27)	5 (1st 19:10)
Lead Changes	5	
Times Tied	4	
Time with Lead	01:47	17:20

Points from	LSU	ARK
Turnovers	8	10
Paint	10	16
Second Chance	8	6
Fast Breaks	4	7
Bench	11	0

	Period by Period Scoring		
	1st	2nd	TOT
LSU	35	41	76
ARK	35	42	77



**LSU at Arkansas**

03/02/22 Bud Walton Arena, Fayetteville, Ark.  
2021-22 Men's Basketball

**Game Time:** 8:00 PM  
**Game Duration:** 2:16  
**Attendance:** 19,200

**Officials:** Pat Adams, Terry Wymer, Owen Shortt

**Period 2**

**Quarter Starters:**

<b>ARK</b>	0 Umude S	1 Notae J	3 Wade T	5 Toney A	10 Williams J
<b>LSU</b>	0 Murray B	1 Pinson X	4 Days D	5 Wilkinson M	15 Reid E

Game Time	ARK	Score	Diff	LSU
20:00	11 LYKES C substitution out			
20:00	3 WADE T substitution in			
20:00				2 GAINES E substitution out
20:00				11 WILLIAMS J substitution out
20:00				24 O'NEAL S substitution out
20:00				1 PINSON X substitution in
20:00				4 DAYS D substitution in
20:00				15 REID E substitution in
19:38	10 WILLIAMS J 2pt FG in the paint, layup missed			
19:35				15 REID E defensive rebound (5)
19:22	1 NOTAE J foul shooting (2 - 1)			0 MURRAY B foul drawn (1)
19:22		<b>35-36</b>	<b>-1</b>	0 MURRAY B free throw 1 - 2 made (3)
19:22		<b>35-37</b>	<b>-2</b>	0 MURRAY B free throw 2 - 2 made (4)
19:09	1 NOTAE J turnover lost ball (2)			1 PINSON X steal (1)
19:03				0 MURRAY B 3pt FG from turnover, pull up jump shot missed
18:59	10 WILLIAMS J defensive rebound (8)			
18:52	1 NOTAE J 2pt FG in the paint, layup blocked			
18:52				15 REID E block (1)
18:49				4 DAYS D defensive rebound (2)
18:45		<b>35-40</b>	<b>-5</b>	4 DAYS D 3pt FG fast break, jump shot made (13)
18:45				1 PINSON X assist (5)
18:35	1 NOTAE J turnover lost ball (3)			0 MURRAY B steal (1)
18:31		<b>35-42</b>	<b>-7</b>	4 DAYS D 2pt FG from turnover in the paint, layup made (15)
18:31				5 WILKINSON M assist (2)
18:30	Timeout 30 Sec			
18:30	Timeout media			
18:30	1 NOTAE J substitution out			
18:30	4 DAVIS D substitution in			
18:01	5 TONEY A 2pt FG outside the paint, jump shot missed			
17:58				4 DAYS D defensive rebound (3)
17:44				1 PINSON X 2pt FG in the paint, layup missed
17:42				4 DAYS D offensive rebound (4)
17:26				1 PINSON X 3pt FG second chance, jump shot missed
17:22				15 REID E offensive rebound (6)
17:17	10 WILLIAMS J foul personal (1 - 2)			15 REID E foul drawn (1)
17:17	3 WADE T substitution out			
17:17	1 NOTAE J substitution in			
17:14	4 DAVIS D foul personal (2 - 3)			0 MURRAY B foul drawn (2)
17:09				1 PINSON X 2pt FG second chance outside the paint, jump shot missed
17:07				4 DAYS D offensive rebound (5)
17:06				4 DAYS D 2pt FG second chance in the paint, layup missed
17:04				15 REID E offensive rebound (7)





**LSU at Arkansas**

03/02/22 Bud Walton Arena, Fayetteville, Ark.  
2021-22 Men's Basketball

**Game Time:** 8:00 PM  
**Game Duration:** 2:16  
**Attendance:** 19,200

**Officials:** Pat Adams, Terry Wymer, Owen Shortt

Game Time	ARK	Score	Diff	LSU
17:03				15 REID E 2pt FG second chance in the paint, layup missed
17:00				1 PINSON X offensive rebound (3)
16:54	10 WILLIAMS J foul drawn (6)			1 PINSON X foul offensive (3 - 1)
16:54				1 PINSON X turnover offensive (2)
16:54				1 PINSON X substitution out
16:54				2 GAINES E substitution in
16:30	0 UMUDE S 2pt FG from turnover outside the paint, pull up jump shot made (11)	<b>37-42</b>	<b>-5</b>	
16:13				0 MURRAY B substitution out
16:13				1 PINSON X substitution in
15:57				1 PINSON X 3pt FG , jump shot missed
15:53	1 NOTAE J defensive rebound (4)			
15:41	4 DAVIS D 3pt FG , jump shot missed			
15:38				1 PINSON X defensive rebound (4)
15:27	4 DAVIS D foul drawn (3)			15 REID E foul offensive (3 - 2)
15:27				15 REID E turnover offensive (2)
15:27	Timeout media			
15:27				15 REID E substitution out
15:27				13 EASON T substitution in
15:15	0 UMUDE S foul drawn (1)			2 GAINES E foul personal (2 - 3)
15:02	10 WILLIAMS J 2pt FG from turnover in the paint, layup made (15)	<b>39-42</b>	<b>-3</b>	
14:36	10 WILLIAMS J steal (2)			1 PINSON X turnover bad pass (3)
14:29	1 NOTAE J foul drawn (2)			13 EASON T foul personal (3 - 4)
14:29				2 GAINES E substitution out
14:29				4 DAYS D substitution out
14:29				11 WILLIAMS J substitution in
14:29				24 O'NEAL S substitution in
14:23	10 WILLIAMS J 2pt FG from turnover outside the paint, jump shot missed			
14:19	offensive rebound (21)			
14:09	4 DAVIS D foul drawn (4)			11 WILLIAMS J foul personal (1 - 5)
14:09				1 PINSON X substitution out
14:09				11 WILLIAMS J substitution out
14:09				0 MURRAY B substitution in
14:09				2 GAINES E substitution in
14:01	1 NOTAE J 2pt FG from turnover second chance outside the paint, step back jump shot missed			
13:56	5 TONEY A offensive rebound (3)			
13:56	5 TONEY A 2pt FG from turnover second chance in the paint, layup made (12)	<b>41-42</b>	<b>-1</b>	
13:42				13 EASON T 2pt FG outside the paint, jump shot blocked
13:42	0 UMUDE S block (1)			
13:41				offensive rebound (30)
13:34	0 UMUDE S foul shooting (1 - 4)			13 EASON T foul drawn (2)
13:34		<b>41-43</b>	<b>-2</b>	13 EASON T free throw 1 - 2 made (6)
13:34		<b>41-44</b>	<b>-3</b>	13 EASON T free throw 2 - 2 made (7)
13:34				13 EASON T substitution out
13:34				4 DAYS D substitution in
13:26	0 UMUDE S 2pt FG fast break in the paint, dunk, made (13)	<b>43-44</b>	<b>-1</b>	
13:26	4 DAVIS D assist (3)			



**LSU at Arkansas**

03/02/22 Bud Walton Arena, Fayetteville, Ark.  
2021-22 Men's Basketball

**Game Time:** 8:00 PM  
**Game Duration:** 2:16  
**Attendance:** 19,200

**Officials:** Pat Adams, Terry Wymer, Owen Shortt

Game Time	ARK	Score	Diff	LSU
13:02		<b>43-46</b>	<b>-3</b>	24 O'NEAL S 2pt FG in the paint, dunk, made (4)
13:02				2 GAINES E assist (1)
12:50	4 DAVIS D foul drawn (5)			5 WILKINSON M foul shooting (2 - 6)
12:50	4 DAVIS D free throw 1 - 2 made (1)	<b>44-46</b>	<b>-2</b>	
12:50				24 O'NEAL S substitution out
12:50				15 REID E substitution in
12:50	4 DAVIS D free throw 2 - 2 made (2)	<b>45-46</b>	<b>-1</b>	
12:25				2 GAINES E 3pt FG , jump shot missed
12:21	4 DAVIS D defensive rebound (1)			
12:02	10 WILLIAMS J 2pt FG in the paint, layup made (17)	<b>47-46</b>	<b>1</b>	
12:02	0 UMUDE S assist (1)			
11:39				4 DAYS D 2pt FG outside the paint, floating jump shot missed
11:38	10 WILLIAMS J defensive rebound (9)			
11:38	10 WILLIAMS J foul drawn (7)			15 REID E foul personal (4 - 7)
11:38	Timeout media			
11:38				2 GAINES E substitution out
11:38				15 REID E substitution out
11:38				1 PINSON X substitution in
11:38				13 EASON T substitution in
11:38	10 WILLIAMS J 1&1 free throw 1 made (18)	<b>48-46</b>	<b>2</b>	
11:38	10 WILLIAMS J 1&1 free throw 2 made (19)	<b>49-46</b>	<b>3</b>	
11:25				1 PINSON X 2pt FG in the paint, jump shot missed
11:22				13 EASON T offensive rebound (3)
11:21				13 EASON T 2pt FG second chance outside the paint, jump shot missed
11:21				offensive rebound (32)
11:17		<b>49-48</b>	<b>1</b>	0 MURRAY B 2pt FG second chance in the paint, layup made (6)
11:17	4 DAVIS D foul shooting (3 - 5)			0 MURRAY B foul drawn (3)
11:17				0 MURRAY B free throw 1 - 1 missed
11:16	0 UMUDE S defensive rebound (2)			
11:01	0 UMUDE S 2pt FG outside the paint, jump shot missed			
10:58				4 DAYS D defensive rebound (6)
10:49				13 EASON T 3pt FG , jump shot missed
10:47	0 UMUDE S defensive rebound (3)			
10:33	1 NOTAE J 3pt FG , step back jump shot made (6)	<b>52-48</b>	<b>4</b>	
10:11				0 MURRAY B 3pt FG , jump shot missed
10:07				13 EASON T offensive rebound (4)
10:04	10 WILLIAMS J foul shooting (2 - 6)			13 EASON T foul drawn (3)
10:04		<b>52-49</b>	<b>3</b>	13 EASON T free throw 1 - 2 made (8)
10:04		<b>52-50</b>	<b>2</b>	13 EASON T free throw 2 - 2 made (9)
09:45	10 WILLIAMS J turnover bad pass (3)			4 DAYS D steal (3)
09:22		<b>52-53</b>	<b>-1</b>	13 EASON T 3pt FG from turnover, jump shot made (12)
09:22				4 DAYS D assist (1)
09:00	10 WILLIAMS J foul drawn (8)			4 DAYS D foul personal (3 - 8)
09:00				4 DAYS D substitution out
09:00				15 REID E substitution in
09:00	10 WILLIAMS J 1&1 free throw 1 missed			
08:59				13 EASON T defensive rebound (5)
08:37		<b>52-55</b>	<b>-3</b>	13 EASON T 2pt FG in the paint, jump shot made (14)



**LSU at Arkansas**

03/02/22 Bud Walton Arena, Fayetteville, Ark.  
2021-22 Men's Basketball

**Game Time:** 8:00 PM  
**Game Duration:** 2:16  
**Attendance:** 19,200

**Officials:** Pat Adams, Terry Wymer, Owen Shortt

Game Time	ARK	Score	Diff	LSU
08:25	4 DAVIS D turnover lost ball (3)			13 EASON T steal (2)
08:19				1 PINSON X 2pt FG from turnover in the paint, layup missed
08:17	10 WILLIAMS J defensive rebound (10)			
08:13	0 UMUDE S foul drawn (2)			1 PINSON X foul personal (4 - 9)
08:13				1 PINSON X substitution out
08:13				2 GAINES E substitution in
08:13	0 UMUDE S 1&1 free throw 1 made (14)	<b>53-55</b>	<b>-2</b>	
08:13	0 UMUDE S 1&1 free throw 2 made (15)	<b>54-55</b>	<b>-1</b>	
08:13				15 REID E substitution out
08:13				4 DAYS D substitution in
07:57	10 WILLIAMS J foul personal (3 - 7)			13 EASON T foul drawn (4)
07:57	Timeout media			
07:57		<b>54-56</b>	<b>-2</b>	13 EASON T 1&1 free throw 1 made (15)
07:57		<b>54-57</b>	<b>-3</b>	13 EASON T 1&1 free throw 2 made (16)
07:34	1 NOTAE J 3pt FG , jump shot missed			
07:31				defensive rebound (36)
07:14		<b>54-60</b>	<b>-6</b>	5 WILKINSON M 3pt FG , jump shot made (3)
07:14				2 GAINES E assist (2)
06:49	1 NOTAE J 2pt FG in the paint, pull up jump shot made (8)	<b>56-60</b>	<b>-4</b>	
06:32				13 EASON T 2pt FG in the paint, layup missed
06:31				13 EASON T offensive rebound (6)
06:31		<b>56-62</b>	<b>-6</b>	13 EASON T 2pt FG second chance in the paint, layup made (18)
06:31	10 WILLIAMS J foul shooting (4 - 8)			13 EASON T foul drawn (5)
06:31		<b>56-63</b>	<b>-7</b>	13 EASON T free throw 1 - 1 made (19)
06:13	4 DAVIS D 2pt FG in the paint, layup made (4)	<b>58-63</b>	<b>-5</b>	
05:49				13 EASON T 3pt FG , jump shot missed
05:45	0 UMUDE S defensive rebound (4)			
05:39	0 UMUDE S foul drawn (3)			13 EASON T foul personal (4 - 10)
05:39	0 UMUDE S free throw 1 - 2 made (16)	<b>59-63</b>	<b>-4</b>	
05:39				13 EASON T substitution out
05:39				15 REID E substitution in
05:39	0 UMUDE S free throw 2 - 2 made (17)	<b>60-63</b>	<b>-3</b>	
05:26				0 MURRAY B 2pt FG outside the paint, jump shot missed
05:22				15 REID E offensive rebound (8)
05:21				4 DAYS D 3pt FG second chance, jump shot missed
05:17				0 MURRAY B offensive rebound (3)
05:16				0 MURRAY B 2pt FG second chance in the paint, jump shot blocked
05:16	10 WILLIAMS J block (1)			
05:16				offensive rebound (40)
05:12		<b>60-65</b>	<b>-5</b>	4 DAYS D 2pt FG second chance in the paint, driving layup made (17)
04:49	0 UMUDE S 3pt FG , jump shot made (20)	<b>63-65</b>	<b>-2</b>	
04:49	4 DAVIS D assist (4)			
04:27	10 WILLIAMS J foul shooting (5 - 9)			4 DAYS D foul drawn (1)
04:27	10 WILLIAMS J substitution out			
04:27	11 LYKES C substitution in			
04:27		<b>63-66</b>	<b>-3</b>	4 DAYS D free throw 1 - 2 made (18)
04:27				15 REID E substitution out



**LSU at Arkansas**

03/02/22 Bud Walton Arena, Fayetteville, Ark.  
2021-22 Men's Basketball

**Game Time:** 8:00 PM  
**Game Duration:** 2:16  
**Attendance:** 19,200

**Officials:** Pat Adams, Terry Wymer, Owen Shortt

Game Time	ARK	Score	Diff	LSU
04:27				1 PINSON X substitution in
04:27		<b>63-67</b>	<b>-4</b>	4 DAYS D free throw 2 - 2 made (19)
04:27				4 DAYS D substitution out
04:27				24 O'NEAL S substitution in
04:03	1 NOTAE J foul drawn (3)			5 WILKINSON M foul shooting (3 - 11)
04:03	1 NOTAE J free throw 1 - 2 made (9)	<b>64-67</b>	<b>-3</b>	
04:03	11 LYKES C substitution out			
04:03	20 JOHNSON K substitution in			
04:03				2 GAINES E substitution out
04:03				24 O'NEAL S substitution out
04:03				4 DAYS D substitution in
04:03				13 EASON T substitution in
04:03	1 NOTAE J free throw 2 - 2 made (10)	<b>65-67</b>	<b>-2</b>	
03:51				1 PINSON X 3pt FG , jump shot missed
03:48				13 EASON T offensive rebound (7)
03:48	5 TONEY A foul shooting (2 - 10)			13 EASON T foul drawn (6)
03:48	Timeout media			
03:48		<b>65-68</b>	<b>-3</b>	13 EASON T free throw 1 - 2 made (20)
03:48		<b>65-69</b>	<b>-4</b>	13 EASON T free throw 2 - 2 made (21)
03:48				13 EASON T substitution out
03:48				2 GAINES E substitution in
03:24	1 NOTAE J 3pt FG , jump shot missed			
03:21				1 PINSON X defensive rebound (5)
02:53				2 GAINES E 2pt FG in the paint, layup blocked
02:53	20 JOHNSON K block (1)			
02:47	1 NOTAE J defensive rebound (5)			
02:44	5 TONEY A 2pt FG in the paint, layup made (14)	<b>67-69</b>	<b>-2</b>	
02:44	1 NOTAE J assist (3)			
02:29				Timeout 30 Sec
02:26		<b>67-71</b>	<b>-4</b>	2 GAINES E 2pt FG in the paint, layup made (6)
02:26				5 WILKINSON M assist (3)
02:10	0 UMUDE S 3pt FG , jump shot made (23)	<b>70-71</b>	<b>-1</b>	
02:10	1 NOTAE J assist (4)			
01:56				Timeout 30 Sec
01:56				2 GAINES E substitution out
01:56				13 EASON T substitution in
01:47		<b>70-73</b>	<b>-3</b>	13 EASON T 2pt FG in the paint, jump shot made (23)
01:47	20 JOHNSON K foul shooting (2 - 11)			13 EASON T foul drawn (7)
01:47		<b>70-74</b>	<b>-4</b>	13 EASON T free throw 1 - 1 made (24)
01:37	1 NOTAE J 2pt FG in the paint, layup blocked			
01:37				13 EASON T block (1)
01:35	5 TONEY A offensive rebound (4)			
01:35	5 TONEY A foul drawn (3)			13 EASON T foul personal (5 - 12)
01:35				13 EASON T substitution out
01:35				2 GAINES E substitution in
01:35	5 TONEY A free throw 1 - 2 made (15)	<b>71-74</b>	<b>-3</b>	
01:35	5 TONEY A free throw 2 - 2 made (16)	<b>72-74</b>	<b>-2</b>	
01:23				5 WILKINSON M 3pt FG , jump shot missed
01:20	1 NOTAE J defensive rebound (6)			



**LSU at Arkansas**

03/02/22 Bud Walton Arena, Fayetteville, Ark.  
2021-22 Men's Basketball

**Game Time:** 8:00 PM  
**Game Duration:** 2:16  
**Attendance:** 19,200

**Officials:** Pat Adams, Terry Wymer, Owen Shortt

Game Time	ARK	Score	Diff	LSU
01:13	5 TONEY A 2pt FG fast break in the paint, layup made (18)	<b>74-74</b>	<b>0</b>	
01:13	1 NOTAE J assist (5)			
00:52		<b>74-76</b>	<b>-2</b>	1 PINSON X 2pt FG in the paint, driving layup made (12)
00:46	0 UMUDE S 3pt FG , jump shot missed			
00:46	20 JOHNSON K offensive rebound (1)			
00:46	20 JOHNSON K foul drawn (2)			5 WILKINSON M foul flagrant 1 (4 - 13)
00:46	20 JOHNSON K free throw 1 - 2 made (1)	<b>75-76</b>	<b>-1</b>	
00:46	20 JOHNSON K free throw 2 - 2 missed			
00:46	offensive dead ball rebound (4)			
00:40	1 NOTAE J turnover lost ball (4)			0 MURRAY B steal (2)
00:19				1 PINSON X 3pt FG from turnover, jump shot missed
00:15				2 GAINES E offensive rebound (1)
00:14				2 GAINES E 2pt FG from turnover second chance in the paint, layup missed
00:12	1 NOTAE J defensive rebound (7)			
00:08	1 NOTAE J foul drawn (4)			5 WILKINSON M foul personal (5 - 14)
00:08				5 WILKINSON M substitution out
00:08				15 REID E substitution in
00:08	1 NOTAE J free throw 1 - 2 made (11)	<b>76-76</b>	<b>0</b>	
00:08	1 NOTAE J free throw 2 - 2 made (12)	<b>77-76</b>	<b>1</b>	
00:01				1 PINSON X 2pt FG in the paint, layup missed
00:00	0 UMUDE S defensive rebound (5)			
<b>END OF GAME</b>				
<b>ARK 77-76 LSU</b>				



**LSU at Arkansas**

03/02/22 Bud Walton Arena, Fayetteville, Ark.  
2021-22 Men's Basketball

Game Time: 8:00 PM  
Game Duration: 2:16  
Attendance: 19,200

Officials: Pat Adams, Terry Wymer, Owen Shortt

**LSU - 41**

NO.	Name	Min	FG		3P		FT		Rebounds			Fouls		TP	AS	TO	ST	Blocks		+/-
			M-A	M-A	M-A	OR	DR	TOT	PF	FD	BS	BA								
4	Darius Days	F 17:54	3-6	1-2	2-2	2	3	5	1	1	9	1	0	1	0	1	0	0	0	0
5	Mwani Wilkinson	F 19:51	1-2	1-2	0-0	0	0	0	4	0	3	2	0	0	0	0	0	0	0	1
15	Efton Reid	C 07:53	0-1	0-0	0-0	3	1	4	2	1	0	0	1	0	1	0	1	0	-1	
0	Brandon Murray	G 17:56	1-5	0-2	2-3	1	0	1	0	3	4	0	0	2	0	1	1	1	1	
1	Xavier Pinson	G 13:02	1-10	0-4	0-0	1	2	3	2	0	2	1	2	1	0	0	0	5		
2	Eric Gaines	12:33	1-4	0-1	0-0	1	0	1	1	0	2	2	0	0	0	0	1	-16		
13	Tari Eason	08:28	4-9	1-3	10-10	4	1	5	3	6	19	0	0	1	1	1	7			
11	Justice Williams	00:20	0-0	0-0	0-0	0	0	0	1	0	0	0	0	0	0	0	0	0		
24	Shareef O'Neal	02:03	1-1	0-0	0-0	0	0	0	0	0	2	0	0	0	0	0	0	-2		
Team									3	1	4			0						
<b>Totals</b>			12-38	3-14	14-15	15	8	23	14	11	41	6	3	5	2	3	-1			

Shooting By Period		
2 <sup>nd</sup> FG%	12-38	31.6%
3PT%	3-14	21.4%
FT%	14-15	93.3%
GM FG%	12-38	31.6%
3PT%	3-14	21.4%
FT%	14-15	93.3%

Dead Ball Rebounds: 0, 0

Technical Fouls::NONE

**Arkansas - 42**

NO.	Name	Min	FG		3P		FT		Rebounds			Fouls		TP	AS	TO	ST	Blocks		+/-
			M-A	M-A	M-A	OR	DR	TOT	PF	FD	BS	BA								
3	Trey Wade	F 02:43	0-0	0-0	0-0	0	0	0	0	0	0	0	0	0	0	0	0	0	0	-7
10	Jaylin Williams	F 15:33	2-4	0-0	2-3	0	3	3	5	3	6	0	1	1	1	0	-2			
0	Stanley Umude	G 20:00	4-6	2-3	4-4	0	4	4	1	3	14	1	0	0	1	0	1			
1	JD Notae	G 18:47	2-7	1-3	4-4	0	4	4	1	3	9	3	3	0	0	2	1			
5	Au'Diese Toney	G 20:00	3-4	0-0	2-2	2	0	2	1	1	8	0	0	0	0	0	1			
4	Davonte Davis	18:30	1-2	0-1	2-2	0	1	1	2	3	4	2	1	0	0	0	8			
11	Chris Lykes	00:24	0-0	0-0	0-0	0	0	0	0	0	0	0	0	0	0	0	-1			
20	Kamani Johnson	04:03	0-0	0-0	1-2	1	0	1	1	1	1	0	0	0	1	0	4			
Team									1	0	1			0						
<b>Totals</b>			12-23	3-7	15-17	4	12	16	11	14	42	6	5	1	3	2	1			

Shooting By Period		
2 <sup>nd</sup> FG%	12-23	52.2%
3PT%	3-7	42.9%
FT%	15-17	88.2%
GM FG%	12-23	52.2%
3PT%	3-7	42.9%
FT%	15-17	88.2%

Dead Ball Rebounds: 1, 0

Technical Fouls::NONE

	LSU	ARK
Biggest lead	7 (2 <sup>nd</sup> 18:31)	4 (2 <sup>nd</sup> 10:33)
Best Scoring Run	7 (2 <sup>nd</sup> 18:31)	6 (2 <sup>nd</sup> 13:56)
Lead Changes	4	
Times Tied	2	
Time with Lead	16:13	02:49

Points from	LSU	ARK
Turnovers	5	6
Paint	18	16
Second Chance	13	5
Fast Breaks	3	4
Bench	23	5

	Period by Period Scoring		
	1st	2nd	TOT
LSU	35	41	76
ARK	35	42	77



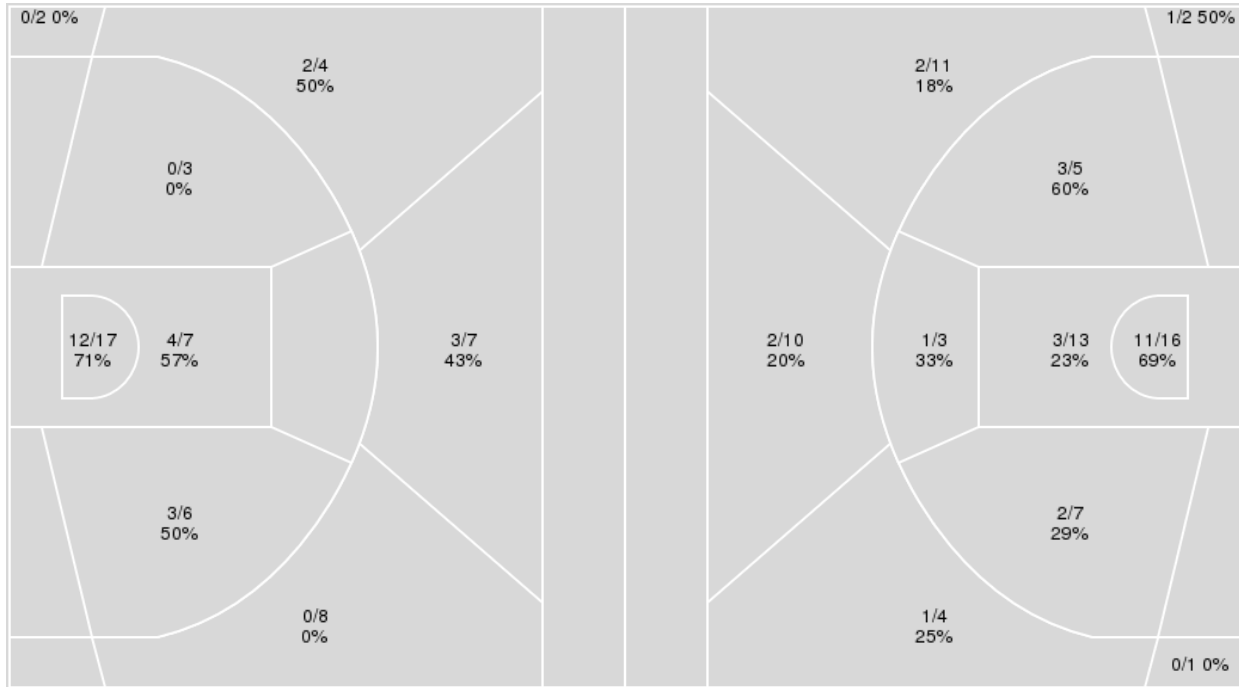
**Officials:** Pat Adams, Terry Wymer, Owen Shortt

{ Players => All; } FG Types => All; Results => All;

{ Players => 0, 1, 2, 3, 4, 5, 10, 11, 13, 15, 20, 21, 22, 24, 25, 30, 44; }  
 FG Types => All; Results => All;

**Arkansas**

**LSU**



Arkansas	M/A	%
Field Goals	24/54	44
2 Points	19/33	58
3 Points	5/21	24
Free Throws	24/28	86

LSU	M/A	%
Field Goals	26/72	36
2 Points	20/44	45
3 Points	6/28	21
Free Throws	18/19	95



**LSU at Arkansas**

03/02/22 Bud Walton Arena, Fayetteville, Ark.  
2021-22 Men's Basketball

**Game Time:** 8:00 PM  
**Game Duration:** 2:16  
**Attendance:** 19,200

**Officials:** Pat Adams, Terry Wymer, Owen Shortt

**LSU**

No	Name	Mins		Score		Points Diff		Points per Min		Assists		Rebounds		Steals		Turnovers	
		On	Off	On	Off	On	Off	On	Off	On	Off	On	Off	On	Off	On	Off
0	Brandon Murray	36:23	03:37	73 - 72	3 - 5	1	-2	2.01	0.83	12	1	42	1	9	0	8	2
1	Xavier Pinson	31:33	08:27	57 - 53	19 - 24	4	-5	1.81	2.25	11	2	36	7	9	0	10	0
2	Eric Gaines	19:31	20:29	31 - 46	45 - 31	-15	14	1.59	2.20	5	8	13	30	3	6	4	6
4	Darius Days	33:26	06:34	66 - 60	10 - 17	6	-7	1.97	1.52	12	1	39	4	7	2	8	2
5	Mwani Wilkinson	36:38	03:22	72 - 71	4 - 6	1	-2	1.97	1.19	12	1	41	2	7	2	9	1
11	Justice Williams	00:38	39:22	0 - 2	76 - 75	-2	1	0.00	1.93	0	13	0	43	0	9	0	10
13	Tari Eason	17:45	22:15	41 - 32	35 - 45	9	-10	2.31	1.57	6	7	16	27	6	3	4	6
15	Efton Reid	16:58	23:02	29 - 32	47 - 45	-3	2	1.71	2.04	5	8	24	19	3	6	5	5
24	Shareef O'Neal	07:08	32:52	11 - 17	65 - 60	-6	5	1.54	1.98	2	11	4	39	1	8	2	8

**Arkansas**

No	Name	Mins		Score		Points Diff		Points per Min		Assists		Rebounds		Steals		Turnovers	
		On	Off	On	Off	On	Off	On	Off	On	Off	On	Off	On	Off	On	Off
0	Stanley Umude	39:20	00:40	76 - 74	1 - 2	2	-1	1.93	1.50	12	0	34	0	3	0	12	0
1	JD Notae	38:38	01:22	77 - 76	0 - 0	1	0	1.99	0.00	12	0	34	0	3	0	12	0
3	Trey Wade	08:30	31:30	12 - 18	65 - 58	-6	7	1.41	2.06	1	11	2	32	1	2	3	9
4	Davonte Davis	30:46	09:14	59 - 54	18 - 22	5	-4	1.92	1.95	10	2	28	6	2	1	8	4
5	Au'Diese Toney	38:35	01:25	77 - 76	0 - 0	1	0	2.00	0.00	12	0	33	1	3	0	10	2
10	Jaylin Williams	34:28	05:32	63 - 63	14 - 13	0	1	1.83	2.53	9	3	27	7	3	0	11	1
11	Chris Lykes	03:55	36:05	7 - 6	70 - 70	1	0	1.79	1.94	1	11	5	29	0	3	3	9
20	Kamani Johnson	05:48	34:12	14 - 13	63 - 63	1	0	2.41	1.84	3	9	7	27	0	3	1	11



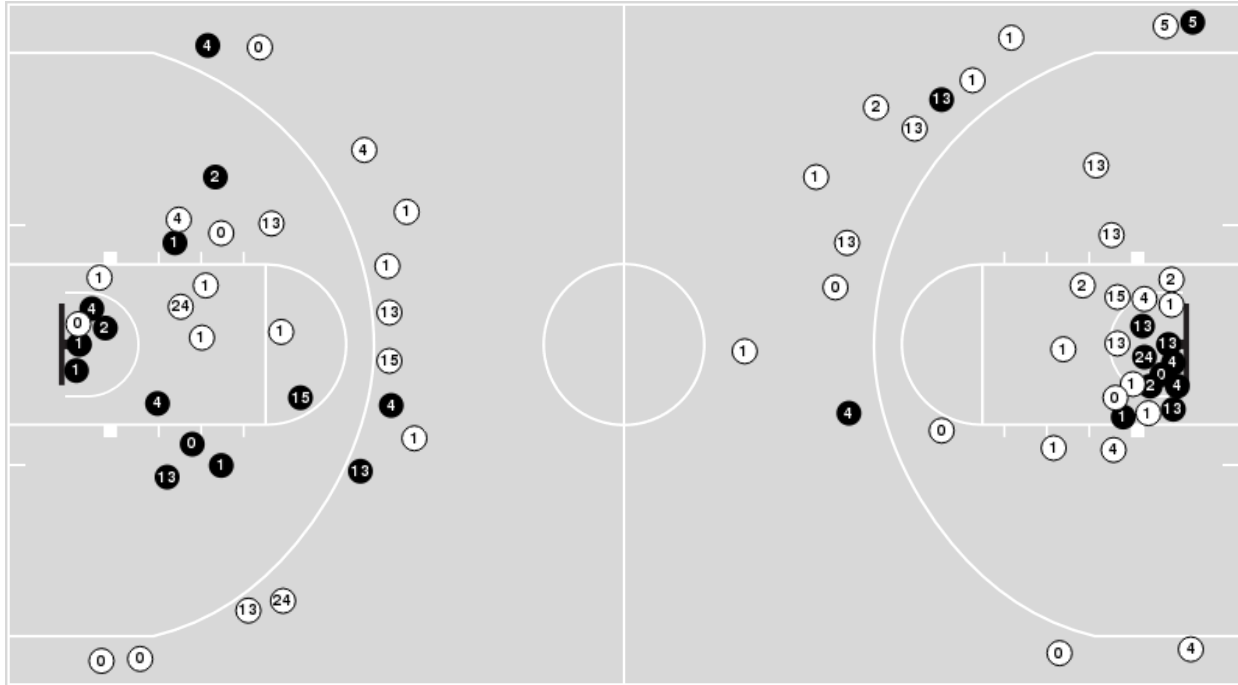


**Officials:** Pat Adams, Terry Wymer, Owen Shortt

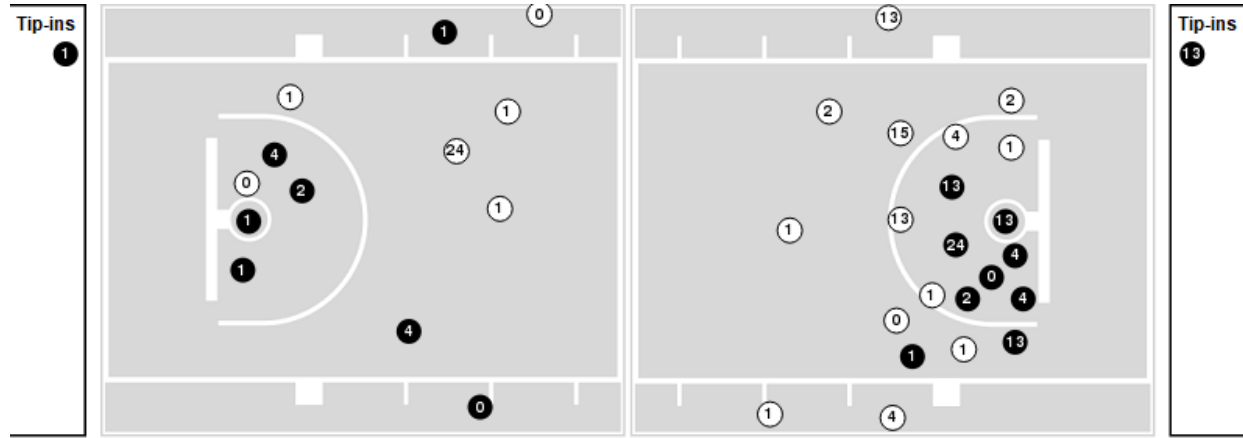
Players => 0, 1, 2, 3, 4, 5, 10, 11, 13, 15, 20, 21, 22, 24, 25, 30, 44 FG Types=>AllResults=>All

**LSU**

**All Field Goals**



**Blow Up Chart**



● Made ○ Missed N - Player Number

LSU	M/A	%
Field Goals	26/72	36
2 Points	20/44	45
3 Points	6/28	21
Free Throws	18/19	95

LSU	M/A	%
Points in the Paint	28 (14 / 29)	48
Fast Break Points	7 (3/3)	100
Second Chance Points	21 (13/25)	52
Effective FG%	40	

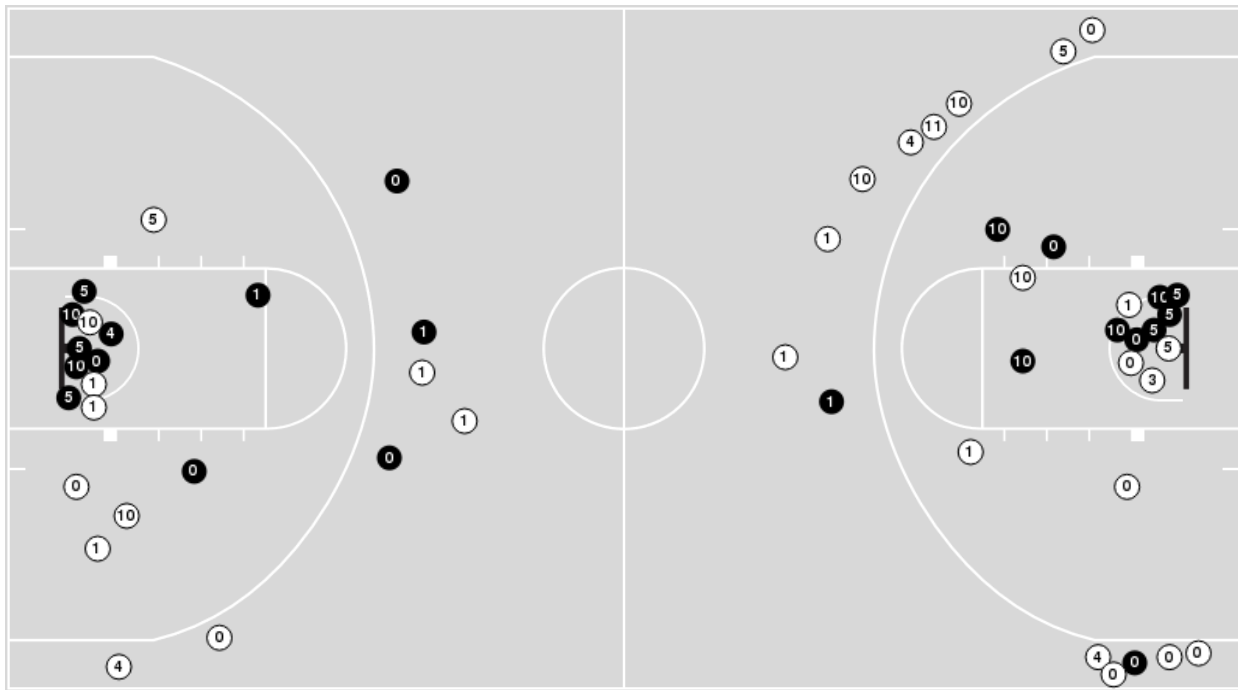


**Officials:** Pat Adams, Terry Wymer, Owen Shortt

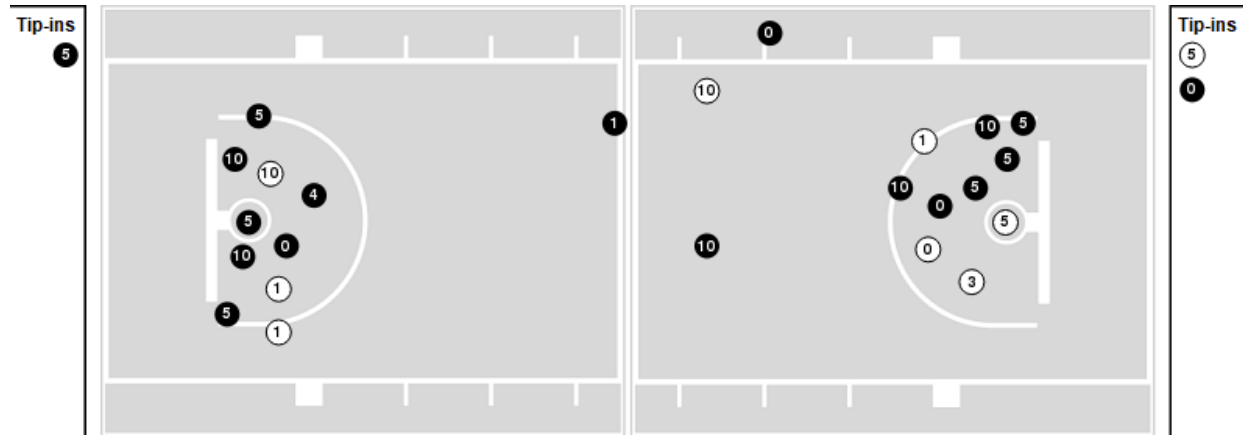
Players => AllFG Types=>AllResults=>All

**Arkansas**

**All Field Goals**



**Blow Up Chart**



● Made    ○ Missed    N - Player Number

Arkansas	M/A	%
Field Goals	24/54	44
2 Points	19/33	58
3 Points	5/21	24
Free Throws	24/28	86

Arkansas	M/A	%
Points in the Paint	32 (16 / 24)	67
Fast Break Points	11 (5/5)	100
Second Chance Points	11 (8/13)	62
Effective FG%	49	



**LSU at Arkansas**

03/02/22 Bud Walton Arena, Fayetteville, Ark.  
2021-22 Men's Basketball

**Game Time:** 8:00 PM  
**Game Duration:** 2:16  
**Attendance:** 19,200

**Officials:** Pat Adams, Terry Wymer, Owen Shortt

**LSU**

Lineup	Quarter On	Time On	Quarter Off	Time Off	Time on Court	Score	Score Diff	Reb	Stl	Tov	Ass	PPP
0- Murray B/ 1- Pinson X/ 4- Days D/ 5- Wilkinson M/ 15- Reid E/	1	20:00	1	14:13	05:47	11-12	-1	9	0	3	3	1.2222
0- Murray B/ 1- Pinson X/ 4- Days D/ 5- Wilkinson M/ 13- Eason T/	1	14:13	1	13:12	01:01	0-3	-3	0	0	0	0	0.0000
0- Murray B/ 2- Gaines E/ 4- Days D/ 5- Wilkinson M/ 13- Eason T/	1	13:12	1	12:01	01:11	4-1	3	1	0	0	0	2.0000
0- Murray B/ 1- Pinson X/ 2- Gaines E/ 4- Days D/ 13- Eason T/	1	12:01	1	11:27	00:34	0-0	0	1	0	1	0	0.0000
0- Murray B/ 1- Pinson X/ 2- Gaines E/ 13- Eason T/ 24- O'Neal S/	1	11:27	1	10:27	01:00	2-0	2	1	1	0	0	0.6944
0- Murray B/ 1- Pinson X/ 2- Gaines E/ 13- Eason T/ 15- Reid E/	1	10:27	1	10:10	00:17	0-3	-3	0	0	0	0	0.0000
0- Murray B/ 1- Pinson X/ 2- Gaines E/ 4- Days D/ 13- Eason T/	1	10:10	1	08:48	01:22	2-1	1	0	1	0	1	1.0000
1- Pinson X/ 2- Gaines E/ 5- Wilkinson M/ 13- Eason T/ 24- O'Neal S/	1	08:48	1	07:15	01:33	3-3	0	0	0	0	1	1.0000
0- Murray B/ 1- Pinson X/ 5- Wilkinson M/ 13- Eason T/ 24- O'Neal S/	1	07:15	1	06:38	00:37	1-4	-3	0	0	1	0	0.6944
0- Murray B/ 1- Pinson X/ 4- Days D/ 5- Wilkinson M/ 24- O'Neal S/	1	06:38	1	05:44	00:54	1-2	-1	1	0	0	0	0.4098
0- Murray B/ 1- Pinson X/ 4- Days D/ 5- Wilkinson M/ 13- Eason T/	1	05:44	1	04:35	01:09	2-0	2	1	2	1	1	0.6667
0- Murray B/ 1- Pinson X/ 4- Days D/ 5- Wilkinson M/ 15- Reid E/	1	04:35	1	01:34	03:01	6-4	2	2	0	0	0	1.5000
0- Murray B/ 1- Pinson X/ 4- Days D/ 5- Wilkinson M/ 13- Eason T/	1	01:34	1	01:01	00:33	3-0	3	3	0	0	1	3.0000
0- Murray B/ 1- Pinson X/ 2- Gaines E/ 5- Wilkinson M/ 24- O'Neal S/	1	01:01	1	00:17	00:43	0-0	0	1	0	1	0	0.0000
0- Murray B/ 2- Gaines E/ 5- Wilkinson M/ 11- Williams J/ 24- O'Neal S/	1	00:17	2	20:00	00:18	0-2	-2	0	0	0	0	0.0000
0- Murray B/ 1- Pinson X/ 4- Days D/ 5- Wilkinson M/ 15- Reid E/	2	20:00	2	16:54	03:06	7-0	7	8	2	1	2	1.4344
0- Murray B/ 2- Gaines E/ 4- Days D/ 5- Wilkinson M/ 15- Reid E/	2	16:54	2	16:13	00:41	0-2	-2	0	0	0	0	0.0000
1- Pinson X/ 2- Gaines E/ 4- Days D/ 5- Wilkinson M/ 15- Reid E/	2	16:13	2	15:27	00:46	0-0	0	1	0	1	0	0.0000
1- Pinson X/ 2- Gaines E/ 4- Days D/ 5- Wilkinson M/ 13- Eason T/	2	15:27	2	14:29	00:58	0-2	-2	0	0	1	0	0.0000
1- Pinson X/ 5- Wilkinson M/ 11- Williams J/ 13- Eason T/ 24- O'Neal S/	2	14:29	2	14:09	00:20	0-0	0	0	0	0	0	0.0000
0- Murray B/ 2- Gaines E/ 5- Wilkinson M/ 13- Eason T/ 24- O'Neal S/	2	14:09	2	13:34	00:35	2-2	0	1	0	0	0	2.2727
0- Murray B/ 2- Gaines E/ 4- Days D/ 5- Wilkinson M/ 24- O'Neal S/	2	13:34	2	12:50	00:44	2-3	-1	0	0	0	1	2.0000
0- Murray B/ 2- Gaines E/ 4- Days D/ 5- Wilkinson M/ 15- Reid E/	2	12:50	2	11:38	01:12	0-3	-3	0	0	0	0	0.0000
0- Murray B/ 1- Pinson X/ 4- Days D/ 5- Wilkinson M/ 13- Eason T/	2	11:38	2	09:00	02:38	7-5	2	4	1	0	1	1.6204
0- Murray B/ 1- Pinson X/ 5- Wilkinson M/ 13- Eason T/ 15- Reid E/	2	09:00	2	08:13	00:47	2-0	2	1	1	0	0	1.0000
0- Murray B/ 2- Gaines E/ 5- Wilkinson M/ 13- Eason T/ 15- Reid E/	2	08:13	2	08:13	00:00	0-2	-2	0	0	0	0	0.0000
0- Murray B/ 2- Gaines E/ 4- Days D/ 5- Wilkinson M/ 13- Eason T/	2	08:13	2	05:39	02:34	8-5	3	2	0	0	1	1.8519
0- Murray B/ 2- Gaines E/ 4- Days D/ 5- Wilkinson M/ 15- Reid E/	2	05:39	2	04:27	01:12	3-4	-1	3	0	0	0	2.0833
0- Murray B/ 1- Pinson X/ 2- Gaines E/ 4- Days D/ 5- Wilkinson M/	2	04:27	2	04:27	00:00	1-0	1	0	0	0	0	2.2727
0- Murray B/ 1- Pinson X/ 2- Gaines E/ 5- Wilkinson M/ 24- O'Neal S/	2	04:27	2	04:03	00:24	0-1	-1	0	0	0	0	0.0000
0- Murray B/ 1- Pinson X/ 4- Days D/ 5- Wilkinson M/ 13- Eason T/	2	04:03	2	03:48	00:15	2-1	1	1	0	0	0	2.2727
0- Murray B/ 1- Pinson X/ 2- Gaines E/ 4- Days D/ 5- Wilkinson M/	2	03:48	2	01:56	01:52	2-5	-3	1	0	0	1	1.0000
0- Murray B/ 1- Pinson X/ 4- Days D/ 5- Wilkinson M/ 13- Eason T/	2	01:56	2	01:35	00:21	3-0	3	0	0	0	0	2.0833
0- Murray B/ 1- Pinson X/ 2- Gaines E/ 4- Days D/ 5- Wilkinson M/	2	01:35	2	00:08	01:26	2-5	-3	1	1	0	0	0.6667
0- Murray B/ 1- Pinson X/ 2- Gaines E/ 4- Days D/ 15- Reid E/	2	00:08	2	00:00	00:09	0-2	-2	0	0	0	0	0.0000



**LSU at Arkansas**

03/02/22 Bud Walton Arena, Fayetteville, Ark.  
2021-22 Men's Basketball

**Game Time:** 8:00 PM  
**Game Duration:** 2:16  
**Attendance:** 19,200

**Officials:** Pat Adams, Terry Wymer, Owen Shortt

**Arkansas**

Lineup	Quarter On	Time On	Quarter Off	Time Off	Time on Court	Score	Score Diff	Reb	Stl	Tov	Ass	PPP
0- Umude S/ 1- Notae J/ 3- Wade T/ 5- Toney A/ 10- Williams J/	1	20:00	1	14:13	05:47	12-11	1	1	1	1	1	1.2146
0- Umude S/ 1- Notae J/ 4- Davis D/ 5- Toney A/ 10- Williams J/	1	14:13	1	13:12	01:01	3-0	3	2	0	0	1	2.0833
1- Notae J/ 4- Davis D/ 5- Toney A/ 10- Williams J/ 20- Johnson K/	1	13:12	1	12:32	00:40	1-2	-1	0	0	0	0	0.6944
0- Umude S/ 1- Notae J/ 4- Davis D/ 5- Toney A/ 20- Johnson K/	1	12:32	1	12:01	00:31	0-2	-2	1	0	0	0	0.0000
0- Umude S/ 4- Davis D/ 5- Toney A/ 11- Lykes C/ 20- Johnson K/	1	12:01	1	11:52	00:09	0-0	0	0	0	0	0	0.0000
0- Umude S/ 1- Notae J/ 4- Davis D/ 11- Lykes C/ 20- Johnson K/	1	11:52	1	11:27	00:25	0-0	0	0	0	0	0	0.0000
0- Umude S/ 1- Notae J/ 4- Davis D/ 10- Williams J/ 11- Lykes C/	1	11:27	1	10:27	01:00	0-0	0	1	0	2	0	0.0000
0- Umude S/ 1- Notae J/ 5- Toney A/ 10- Williams J/ 11- Lykes C/	1	10:27	1	08:48	01:39	4-4	0	3	0	1	0	1.3889
0- Umude S/ 1- Notae J/ 4- Davis D/ 5- Toney A/ 10- Williams J/	1	08:48	1	00:17	08:30	13-16	-3	9	1	3	3	0.8553
0- Umude S/ 1- Notae J/ 5- Toney A/ 10- Williams J/ 11- Lykes C/	1	00:17	2	20:00	00:18	2-0	2	1	0	0	1	2.0000
0- Umude S/ 1- Notae J/ 3- Wade T/ 5- Toney A/ 10- Williams J/	2	20:00	2	18:30	01:30	0-7	-7	1	0	2	0	0.0000
0- Umude S/ 3- Wade T/ 4- Davis D/ 5- Toney A/ 10- Williams J/	2	18:30	2	17:17	01:13	0-0	0	0	0	0	0	0.0000
0- Umude S/ 1- Notae J/ 4- Davis D/ 5- Toney A/ 10- Williams J/	2	17:17	2	04:27	12:50	28-23	5	9	1	2	3	1.5590
0- Umude S/ 1- Notae J/ 4- Davis D/ 5- Toney A/ 11- Lykes C/	2	04:27	2	04:03	00:24	1-2	-1	0	0	0	0	2.2727
0- Umude S/ 1- Notae J/ 4- Davis D/ 5- Toney A/ 20- Johnson K/	2	04:03	2	00:00	04:03	13-9	4	6	0	1	3	1.6089



**LSU at Arkansas**

03/02/22 Bud Walton Arena, Fayetteville, Ark.  
2021-22 Men's Basketball

**Game Time:** 8:00 PM  
**Game Duration:** 2:16  
**Attendance:** 19,200

**Officials:** Pat Adams, Terry Wymer, Owen Shortt

**LSU**

Lineup	Time	Score	Score Diff	Pts/Min	Reb	Stl	Tov	Ass	PPP
0- Murray B/ 1- Pinson X/ 4- Days D/ 5- Wilkinson M/ 15- Reid E/	11:54	24-16	8	2.0168	19	2	4	5	1.3423
0- Murray B/ 1- Pinson X/ 4- Days D/ 5- Wilkinson M/ 13- Eason T/	05:57	17-9	8	2.8571	9	3	1	3	1.3449
0- Murray B/ 2- Gaines E/ 4- Days D/ 5- Wilkinson M/ 13- Eason T/	03:45	12-6	6	3.2000	3	0	0	1	1.8987
0- Murray B/ 1- Pinson X/ 2- Gaines E/ 4- Days D/ 5- Wilkinson M/	03:18	5-10	-5	1.5152	2	1	0	1	0.9191
0- Murray B/ 2- Gaines E/ 4- Days D/ 5- Wilkinson M/ 15- Reid E/	03:05	3-9	-6	0.9730	3	0	0	0	0.8721
0- Murray B/ 1- Pinson X/ 2- Gaines E/ 4- Days D/ 13- Eason T/	01:56	2-1	1	1.0345	1	1	1	1	0.6667
1- Pinson X/ 2- Gaines E/ 5- Wilkinson M/ 13- Eason T/ 24- O'Neal S/	01:33	3-3	0	1.9355	0	0	0	1	1.0000
0- Murray B/ 1- Pinson X/ 2- Gaines E/ 5- Wilkinson M/ 24- O'Neal S/	01:07	0-1	-1	0.0000	1	0	1	0	0.0000
0- Murray B/ 1- Pinson X/ 2- Gaines E/ 13- Eason T/ 24- O'Neal S/	01:00	2-0	2	2.0000	1	1	0	0	0.6944
1- Pinson X/ 2- Gaines E/ 4- Days D/ 5- Wilkinson M/ 13- Eason T/	00:58	0-2	-2	0.0000	0	0	1	0	0.0000
0- Murray B/ 1- Pinson X/ 4- Days D/ 5- Wilkinson M/ 24- O'Neal S/	00:54	1-2	-1	1.1111	1	0	0	0	0.4098
0- Murray B/ 1- Pinson X/ 5- Wilkinson M/ 13- Eason T/ 15- Reid E/	00:47	2-0	2	2.5532	1	1	0	0	1.0000
1- Pinson X/ 2- Gaines E/ 4- Days D/ 5- Wilkinson M/ 15- Reid E/	00:46	0-0	0	0.0000	1	0	1	0	0.0000
0- Murray B/ 2- Gaines E/ 4- Days D/ 5- Wilkinson M/ 24- O'Neal S/	00:44	2-3	-1	2.7273	0	0	0	1	2.0000
0- Murray B/ 1- Pinson X/ 5- Wilkinson M/ 13- Eason T/ 24- O'Neal S/	00:37	1-4	-3	1.6216	0	0	1	0	0.6944
0- Murray B/ 2- Gaines E/ 5- Wilkinson M/ 13- Eason T/ 24- O'Neal S/	00:35	2-2	0	3.4286	1	0	0	0	2.2727
1- Pinson X/ 5- Wilkinson M/ 11- Williams J/ 13- Eason T/ 24- O'Neal S/	00:20	0-0	0	0.0000	0	0	0	0	0.0000
0- Murray B/ 2- Gaines E/ 5- Wilkinson M/ 11- Williams J/ 24- O'Neal S/	00:18	0-2	-2	0.0000	0	0	0	0	0.0000
0- Murray B/ 1- Pinson X/ 2- Gaines E/ 13- Eason T/ 15- Reid E/	00:17	0-3	-3	0.0000	0	0	0	0	0.0000
0- Murray B/ 1- Pinson X/ 2- Gaines E/ 4- Days D/ 15- Reid E/	00:09	0-2	-2	0.0000	0	0	0	0	0.0000
0- Murray B/ 2- Gaines E/ 5- Wilkinson M/ 13- Eason T/ 15- Reid E/	00:00	0-2	-2	NaN	0	0	0	0	0.0000



LSU at Arkansas

03/02/22 Bud Walton Arena, Fayetteville, Ark.  
2021-22 Men's Basketball

Game Time: 8:00 PM  
Game Duration: 2:16  
Attendance: 19,200

Officials: Pat Adams, Terry Wymer, Owen Shortt

Arkansas

Lineup	Time	Score	Score Diff	Pts/Min	Reb	Stl	Tov	Ass	PPP
0- Umude S/ 1- Notae J/ 4- Davis D/ 5- Toney A/ 10- Williams J/	22:21	44-39	5	1.9687	20	2	5	7	1.2717
0- Umude S/ 1- Notae J/ 3- Wade T/ 5- Toney A/ 10- Williams J/	07:17	12-18	-6	1.6476	2	1	3	1	0.8646
0- Umude S/ 1- Notae J/ 4- Davis D/ 5- Toney A/ 20- Johnson K/	04:34	13-11	2	2.8467	7	0	1	3	1.6089
0- Umude S/ 1- Notae J/ 5- Toney A/ 10- Williams J/ 11- Lykes C/	01:57	6-4	2	3.0769	4	0	1	1	1.5464
0- Umude S/ 3- Wade T/ 4- Davis D/ 5- Toney A/ 10- Williams J/	01:13	0-0	0	0.0000	0	0	0	0	0.0000
0- Umude S/ 1- Notae J/ 4- Davis D/ 10- Williams J/ 11- Lykes C/	01:00	0-0	0	0.0000	1	0	2	0	0.0000
1- Notae J/ 4- Davis D/ 5- Toney A/ 10- Williams J/ 20- Johnson K/	00:40	1-2	-1	1.5000	0	0	0	0	0.6944
0- Umude S/ 1- Notae J/ 4- Davis D/ 11- Lykes C/ 20- Johnson K/	00:25	0-0	0	0.0000	0	0	0	0	0.0000
0- Umude S/ 1- Notae J/ 4- Davis D/ 5- Toney A/ 11- Lykes C/	00:24	1-2	-1	2.5000	0	0	0	0	2.2727
0- Umude S/ 4- Davis D/ 5- Toney A/ 11- Lykes C/ 20- Johnson K/	00:09	0-0	0	0.0000	0	0	0	0	0.0000