



LSU at Kentucky

02/23/22 Rupp Arena, Lexington
2021-22 Men's Basketball

Game Time: 9:00 PM
Game Duration: 2:26
Attendance: 20,199

Officials: Terry Oglesby, Byron Jarrett, Patrick Evans

LSU - 66

Record: 19-9 (7-8)

NO.	Name	Min	FG	3P	FT	Rebounds			Fouls		TP	AS	TO	ST	Blocks		+/-
			M-A	M-A	M-A	OR	DR	TOT	PF	FD					BS	BA	
4	Darius Days	F 38:38	4-15	2-10	0-0	3	5	8	2	0	10	1	0	1	0	1	-7
5	Mwani Wilkinson	F 23:19	2-2	2-2	0-0	0	1	1	2	0	6	1	1	0	0	0	8
15	Efton Reid	C 25:29	2-2	0-0	1-3	0	2	2	5	4	5	0	1	1	0	0	-19
0	Brandon Murray	G 33:33	1-5	1-3	0-0	0	2	2	5	1	3	1	1	0	0	1	-10
1	Xavier Pinson	G 34:23	6-20	2-7	12-13	2	0	2	2	6	26	8	3	1	0	1	-2
13	Tari Eason	12:56	2-7	1-1	0-0	0	1	1	5	0	5	0	0	1	0	2	8
2	Eric Gaines	25:18	4-6	1-3	2-2	2	0	2	2	2	11	1	2	2	0	0	-4
3	Alex Fudge	06:21	0-0	0-0	0-0	0	0	0	2	0	0	0	0	0	0	0	2
11	Justice Williams	00:03	0-0	0-0	0-0	0	0	0	0	0	0	0	0	0	0	0	-1
Team						3	3	6			0		0				
Totals			21-57	9-26	15-18	10	14	24	25	13	66	12	8	6	0	5	-5

Shooting By Period		
1 st FG%	11-28	39.3%
3PT%	5-10	50.0%
FT%	4-5	80%
2 nd FG%	10-29	34.5%
3PT%	4-16	25.0%
FT%	11-13	84.6%
GM FG%	21-57	36.8%
3PT%	9-26	34.6%
FT%	15-18	83.3%

Dead Ball Rebounds: 3, 3

Technical Fouls: NONE

Kentucky - 71

Record: 23-5 (12-3)

NO.	Name	Min	FG	3P	FT	Rebounds			Fouls		TP	AS	TO	ST	Blocks		+/-
			M-A	M-A	M-A	OR	DR	TOT	PF	FD					BS	BA	
0	Jacob Toppin	F 39:04	2-7	1-2	3-4	1	5	6	1	2	8	0	0	1	1	0	4
12	Keion Brooks Jr.	F 21:22	2-5	0-0	2-2	0	1	1	3	1	6	0	3	0	1	0	-11
34	Oscar Tshiebwe	F 38:20	5-7	0-0	7-11	6	10	16	3	10	17	0	0	0	3	0	4
10	Davion Mintz	G 37:53	4-10	1-4	4-4	2	0	2	4	2	13	0	2	2	0	0	8
31	Kellan Grady	G 40:00	5-13	0-5	3-3	0	3	3	1	4	13	3	3	1	0	0	5
55	Lance Ware	04:11	0-0	0-0	1-2	0	0	0	1	2	1	0	1	0	0	0	1
11	Dontaie Allen	02:14	0-1	0-0	0-0	0	0	0	0	0	0	0	0	0	0	0	-3
23	Bryce Hopkins	15:34	5-6	0-1	3-6	2	2	4	0	4	13	0	1	0	0	0	16
4	Daimion Collins	01:22	0-0	0-0	0-0	0	0	0	1	0	0	0	1	0	0	0	1
Team						0	4	4			0		1				
Totals			23-49	2-12	23-32	11	25	36	14	25	71	3	12	4	5	0	5

Shooting By Period		
1 st FG%	8-24	33.3%
3PT%	0-5	0.0%
FT%	7-11	63.6%
2 nd FG%	15-25	60.0%
3PT%	2-7	28.6%
FT%	16-21	76.2%
GM FG%	23-49	46.9%
3PT%	2-12	16.7%
FT%	23-32	71.9%

Dead Ball Rebounds: 7, 1

Technical Fouls: Ware 1st 12:49

	LSU	UKY
Biggest lead	11 (1 st 7:17)	15 (2 nd 3:17)
Best Scoring Run	8 (1 st 15:49)	11 (2 nd 15:33)
Lead Changes	2	
Times Tied	2	
Time with Lead	20:54	17:50

Points from	LSU	UKY
Turnovers	23	5
Paint	22	34
Second Chance	10	17
Fast Breaks	8	5
Bench	16	14

	Period by Period Scoring		
	1st	2nd	TOT
LSU	31	35	66
UKY	23	48	71



LSU at Kentucky

02/23/22 Rupp Arena, Lexington
2021-22 Men's Basketball

Game Time: 9:00 PM
Game Duration: 2:26
Attendance: 20,199

Officials: Terry Oglesby, Byron Jarrett, Patrick Evans

Period 1

Quarter Starters:

UKY	0 Toppin J	10 Mintz D	12 Brooks Jr. K	31 Grady K	34 Tshiebwe O
LSU	0 Murray B	1 Pinson X	4 Days D	5 Wilkinson M	15 Reid E

Game Time	UKY	Score	Diff	LSU
20:00	34 TSHIEBWE O jumpball lost			15 REID E jumpball won
19:32				4 DAYS D 2pt FG in the paint, layup missed
19:32				4 DAYS D offensive rebound (1)
19:32				4 DAYS D 2pt FG second chance in the paint, layup blocked
19:32	12 BROOKS JR. K block (1)			
19:32				offensive rebound (2)
19:32				1 PINSON X 2pt FG second chance in the paint, layup missed
19:32	0 TOPPIN J defensive rebound (1)			
19:14	34 TSHIEBWE O foul drawn (1)			15 REID E foul personal (1 - 1)
19:02	12 BROOKS JR. K 2pt FG in the paint, dunk, made (2)	2-0	2	
19:02	31 GRADY K assist (1)			
18:40				1 PINSON X 2pt FG in the paint, layup missed
18:38	34 TSHIEBWE O defensive rebound (1)			
18:20	0 TOPPIN J 2pt FG in the paint, dunk, made (2)	4-0	4	
17:58		4-3	1	4 DAYS D 3pt FG , jump shot made (3)
17:58				5 WILKINSON M assist (1)
17:38	34 TSHIEBWE O foul drawn (2)			15 REID E foul shooting (2 - 2)
17:38	34 TSHIEBWE O free throw 1 - 2 made (1)	5-3	2	
17:38				15 REID E substitution out
17:38				13 EASON T substitution in
17:38	34 TSHIEBWE O free throw 2 - 2 made (2)	6-3	3	
17:16				1 PINSON X 2pt FG in the paint, layup blocked
17:16	34 TSHIEBWE O block (1)			
17:12				offensive rebound (3)
17:07				13 EASON T 2pt FG second chance in the paint, layup missed
17:05	0 TOPPIN J defensive rebound (2)			
17:02	12 BROOKS JR. K 2pt FG outside the paint, jump shot missed			
16:58				5 WILKINSON M defensive rebound (1)
16:46		6-6	0	1 PINSON X 3pt FG , jump shot made (3)
16:39	10 MINTZ D turnover lost ball (1)			13 EASON T steal (1)
16:35		6-8	-2	1 PINSON X 2pt FG fast break from turnover in the paint, layup made (5)
16:14	31 GRADY K 2pt FG in the paint, jump shot missed			
16:09				4 DAYS D defensive rebound (2)
15:49		6-11	-5	13 EASON T 3pt FG , jump shot made (3)
15:49				1 PINSON X assist (1)
15:25	0 TOPPIN J 2pt FG outside the paint, jump shot missed			
15:22	34 TSHIEBWE O offensive rebound (2)			
15:21	34 TSHIEBWE O 2pt FG second chance in the paint, layup made (4)	8-11	-3	
15:19	34 TSHIEBWE O foul drawn (3)			13 EASON T foul shooting (1 - 3)
15:19	Timeout media			
15:19	12 BROOKS JR. K substitution out			
15:19	55 WARE L substitution in			



LSU at Kentucky

02/23/22 Rupp Arena, Lexington
2021-22 Men's Basketball

Game Time: 9:00 PM
Game Duration: 2:26
Attendance: 20,199

Officials: Terry Oglesby, Byron Jarrett, Patrick Evans

Game Time	UKY	Score	Diff	LSU
15:19	34 TSHIEBWE O free throw 1 - 1 made (5)	9-11	-2	
14:55		9-13	-4	13 EASON T 2pt FG in the paint, layup made (5)
14:55				1 PINSON X assist (2)
14:24	31 GRADY K 3pt FG , jump shot missed			
14:20	34 TSHIEBWE O offensive rebound (3)			
14:20	34 TSHIEBWE O 2pt FG second chance in the paint, layup made (7)	11-13	-2	
14:06				13 EASON T 2pt FG in the paint, layup blocked
14:06	34 TSHIEBWE O block (2)			
14:02	0 TOPPIN J defensive rebound (3)			
13:38	10 MINTZ D 2pt FG outside the paint, jump shot missed			
13:35				4 DAYS D defensive rebound (3)
13:06				13 EASON T 2pt FG in the paint, layup missed
13:04	34 TSHIEBWE O defensive rebound (4)			
12:50	34 TSHIEBWE O 2pt FG in the paint, layup missed			
12:49				defensive dead ball rebound (1)
12:49	55 WARE L foul drawn (1)			5 WILKINSON M foul personal (1 - 4)
12:49	55 WARE L foul contact dead ball technical (1 - 1)			
12:49	55 WARE L turnover offensive (1)			
12:49		11-14	-3	1 PINSON X free throw 1 - 2 made (6)
12:49	55 WARE L substitution out			
12:49	12 BROOKS JR. K substitution in			
12:49		11-15	-4	1 PINSON X free throw 2 - 2 made (7)
12:35				0 MURRAY B 2pt FG outside the paint, jump shot missed
12:31	defensive rebound (8)			
12:15	34 TSHIEBWE O 2pt FG outside the paint, jump shot made (9)	13-15	-2	
11:55				4 DAYS D 3pt FG , jump shot missed
11:53	0 TOPPIN J defensive rebound (4)			
11:35	12 BROOKS JR. K turnover lost ball (1)			1 PINSON X steal (1)
11:30		13-17	-4	1 PINSON X 2pt FG from turnover in the paint, layup made (9)
11:30	0 TOPPIN J 2pt FG in the paint, jump shot missed			
11:30				13 EASON T defensive rebound (1)
11:27		13-20	-7	1 PINSON X 3pt FG , jump shot made (12)
10:45	34 TSHIEBWE O foul drawn (4)			1 PINSON X foul personal (1 - 5)
10:45	Timeout media			
10:45	10 MINTZ D substitution out			
10:45	11 ALLEN D substitution in			
10:45				0 MURRAY B substitution out
10:45				5 WILKINSON M substitution out
10:45				2 GAINES E substitution in
10:45				3 FUDGE A substitution in
10:29	31 GRADY K 2pt FG outside the paint, jump shot made (2)	15-20	-5	
10:05		15-22	-7	1 PINSON X 2pt FG in the paint, layup made (14)
10:00	31 GRADY K turnover bad pass (1)			
09:45				1 PINSON X 3pt FG from turnover, jump shot missed
09:42				2 GAINES E offensive rebound (1)
09:27		15-25	-10	4 DAYS D 3pt FG from turnover second chance, jump shot made (6)
09:27				1 PINSON X assist (3)
09:23	Timeout 30 Sec			



LSU at Kentucky

02/23/22 Rupp Arena, Lexington
2021-22 Men's Basketball

Game Time: 9:00 PM
Game Duration: 2:26
Attendance: 20,199

Officials: Terry Oglesby, Byron Jarrett, Patrick Evans

Game Time	UKY	Score	Diff	LSU
09:23	12 BROOKS JR. K substitution out			
09:23	55 WARE L substitution in			
09:11	34 TSHIEBWE O 2pt FG outside the paint, jump shot missed			
09:09				defensive rebound (9)
08:51				4 DAYS D 3pt FG , jump shot missed
08:48	34 TSHIEBWE O defensive rebound (5)			
08:40	11 ALLEN D 2pt FG in the paint, jump shot missed			
08:38				defensive dead ball rebound (2)
08:38	0 TOPPIN J substitution out			
08:38	11 ALLEN D substitution out			
08:38	10 MINTZ D substitution in			
08:38	23 HOPKINS B substitution in			
08:13				13 EASON T 2pt FG outside the paint, jump shot missed
08:10	defensive dead ball rebound (1)			
08:10	34 TSHIEBWE O foul drawn (5)			3 FUDGE A foul personal (1 - 6)
07:42	55 WARE L foul drawn (2)			13 EASON T foul shooting (2 - 7)
07:42	Timeout media			
07:42				13 EASON T substitution out
07:42				15 REID E substitution in
07:42	55 WARE L free throw 1 - 2 missed			
07:42	offensive dead ball rebound (2)			
07:42	55 WARE L free throw 2 - 2 made (1)	16-25	-9	
07:42	55 WARE L substitution out			
07:42	0 TOPPIN J substitution in			
07:17		16-27	-11	4 DAYS D 2pt FG in the paint, jump shot made (8)
07:01	23 HOPKINS B foul drawn (1)			3 FUDGE A foul shooting (2 - 8)
07:01	23 HOPKINS B free throw 1 - 2 missed			
07:01	offensive dead ball rebound (3)			
07:01				3 FUDGE A substitution out
07:01				0 MURRAY B substitution in
07:01	23 HOPKINS B free throw 2 - 2 missed			
07:01	34 TSHIEBWE O offensive rebound (6)			
06:50	10 MINTZ D 2pt FG second chance in the paint, layup missed			
06:50				defensive rebound (10)
06:26	10 MINTZ D steal (1)			1 PINSON X turnover lost ball (1)
06:10	31 GRADY K 2pt FG from turnover in the paint, jump shot made (4)	18-27	-9	
05:40	31 GRADY K foul drawn (1)			1 PINSON X foul offensive (2 - 9)
05:40				1 PINSON X turnover offensive (2)
05:40	23 HOPKINS B substitution out			
05:40	12 BROOKS JR. K substitution in			
05:23	34 TSHIEBWE O foul drawn (6)			4 DAYS D foul personal (1 - 10)
05:23	34 TSHIEBWE O free throw 1 - 2 missed			
05:23	offensive dead ball rebound (4)			
05:23				1 PINSON X substitution out
05:23				5 WILKINSON M substitution in
05:23	34 TSHIEBWE O free throw 2 - 2 made (10)	19-27	-8	
05:01		19-29	-10	15 REID E 2pt FG in the paint, dunk, made (2)
05:01				2 GAINES E assist (1)



LSU at Kentucky

02/23/22 Rupp Arena, Lexington
2021-22 Men's Basketball

Game Time: 9:00 PM
Game Duration: 2:26
Attendance: 20,199

Officials: Terry Oglesby, Byron Jarrett, Patrick Evans

Game Time	UKY	Score	Diff	LSU
04:38	10 MINTZ D 3pt FG , jump shot missed			
04:35				defensive dead ball rebound (3)
04:35	31 GRADY K foul personal (1 - 2)			2 GAINES E foul drawn (1)
04:13				5 WILKINSON M turnover travel (1)
04:03	0 TOPPIN J 3pt FG from turnover, jump shot missed			
04:00				0 MURRAY B defensive rebound (1)
03:44	31 GRADY K steal (1)			2 GAINES E turnover bad pass (1)
03:36	31 GRADY K 3pt FG from turnover, jump shot missed			
03:33	0 TOPPIN J offensive rebound (5)			
03:21	0 TOPPIN J 2pt FG from turnover second chance outside the paint, jump shot missed			
03:18				4 DAYS D defensive rebound (4)
03:04	12 BROOKS JR. K foul personal (1 - 3)			0 MURRAY B foul drawn (1)
03:04	Timeout media			
03:04				2 GAINES E substitution out
03:04				1 PINSON X substitution in
02:53				4 DAYS D 3pt FG , jump shot missed
02:51	34 TSHIEBWE O defensive rebound (7)			
02:34	31 GRADY K 2pt FG in the paint, jump shot missed			
02:33				defensive rebound (13)
02:20				1 PINSON X 2pt FG outside the paint, jump shot missed
02:17				1 PINSON X offensive rebound (1)
01:58				1 PINSON X 2pt FG second chance in the paint, layup missed
01:56	defensive rebound (14)			
01:56				1 PINSON X substitution out
01:56				2 GAINES E substitution in
01:43	10 MINTZ D 2pt FG in the paint, layup made (2)	21-29	-8	
01:16	0 TOPPIN J steal (1)			0 MURRAY B turnover lost ball (1)
01:06	10 MINTZ D 3pt FG from turnover, jump shot missed			
01:00				15 REID E defensive rebound (1)
00:56				Timeout 30 Sec
00:56				0 MURRAY B substitution out
00:56				1 PINSON X substitution in
00:31	12 BROOKS JR. K foul shooting (2 - 4)			1 PINSON X foul drawn (1)
00:31	12 BROOKS JR. K substitution out			
00:31	4 COLLINS D substitution in			
00:31				1 PINSON X free throw 1 - 3 missed
00:31				offensive dead ball rebound (4)
00:31		21-30	-9	1 PINSON X free throw 2 - 3 made (15)
00:31		21-31	-10	1 PINSON X free throw 3 - 3 made (16)
00:31				1 PINSON X substitution out
00:31				0 MURRAY B substitution in
00:07	34 TSHIEBWE O foul drawn (7)			5 WILKINSON M foul shooting (2 - 11)
00:07	34 TSHIEBWE O free throw 1 - 2 made (11)	22-31	-9	
00:07				5 WILKINSON M substitution out
00:07				1 PINSON X substitution in
00:07	34 TSHIEBWE O free throw 2 - 2 made (12)	23-31	-8	
00:07	34 TSHIEBWE O substitution out			
00:07	11 ALLEN D substitution in			



Official Basketball Play by Play - First Half

LSU at Kentucky

02/23/22 Rupp Arena, Lexington
2021-22 Men's Basketball

Game Time: 9:00 PM

Game Duration: 2:26

Attendance: 20,199

Officials: Terry Oglesby, Byron Jarrett, Patrick Evans

Game Time	UKY	Score	Diff	LSU
00:00				1 PINSON X 3pt FG , jump shot missed
00:00	31 GRADY K defensive rebound (1)			
END OF PERIOD				
UKY 23-31 LSU				



LSU at Kentucky

02/23/22 Rupp Arena, Lexington
2021-22 Men's Basketball

Game Time: 9:00 PM
Game Duration: 2:26
Attendance: 20,199

Officials: Terry Oglesby, Byron Jarrett, Patrick Evans

LSU - 31

NO.	Name	F	Min	FG			Rebounds			Fouls		TP	AS	TO	ST	Blocks		+/-
				M-A	M-A	M-A	OR	DR	TOT	PF	FD					BS	BA	
4	Darius Days	F	20:00	3-8	2-5	0-0	1	3	4	1	0	8	0	0	0	0	1	8
5	Mwani Wilkinson	F	14:31	0-0	0-0	0-0	0	1	1	2	0	0	1	1	0	0	0	7
15	Efton Reid	C	10:04	1-1	0-0	0-0	0	1	1	2	0	2	0	0	0	0	0	-4
0	Brandon Murray	G	15:51	0-1	0-0	0-0	0	1	1	0	1	0	0	1	0	0	0	2
1	Xavier Pinson	G	16:17	5-12	2-4	4-5	1	0	1	2	1	16	3	2	1	0	1	10
13	Tari Eason		09:56	2-6	1-1	0-0	0	1	1	2	0	5	0	0	1	0	1	12
2	Eric Gaines		09:37	0-0	0-0	0-0	1	0	1	0	1	0	1	1	0	0	0	1
3	Alex Fudge		03:44	0-0	0-0	0-0	0	0	0	2	0	0	0	0	0	0	0	4
Team							2	3	5			0		0				
Totals				11-28	5-10	4-5	5	10	15	11	3	31	5	5	2	0	3	8

Shooting By Period		
1 st FG%	11-28	39.3%
3PT%	5-10	50.0%
FT%	4-5	80%
GM FG%	11-28	39.3%
3PT%	5-10	50.0%
FT%	4-5	80.0%

Dead Ball Rebounds: 1, 3

Technical Fouls::NONE

Kentucky - 23

NO.	Name	F	Min	FG			Rebounds			Fouls		TP	AS	TO	ST	Blocks		+/-
				M-A	M-A	M-A	OR	DR	TOT	PF	FD					BS	BA	
0	Jacob Toppin	F	19:04	1-5	0-1	0-0	1	4	5	0	0	2	0	0	1	0	0	-9
12	Keion Brooks Jr.	F	13:16	1-2	0-0	0-0	0	0	0	2	0	2	0	1	0	1	0	-9
34	Oscar Tshiebwe	F	19:53	3-5	0-0	6-7	3	4	7	0	7	12	0	0	0	2	0	-8
10	Davion Mintz	G	17:53	1-5	0-2	0-0	0	0	0	0	0	2	0	1	1	0	0	-5
31	Kellan Grady	G	20:00	2-6	0-2	0-0	0	1	1	1	1	4	1	1	1	0	0	-8
55	Lance Ware		04:11	0-0	0-0	1-2	0	0	0	1	2	1	0	1	0	0	0	1
11	Dontaie Allen		02:14	0-1	0-0	0-0	0	0	0	0	0	0	0	0	0	0	0	-3
23	Bryce Hopkins		02:58	0-0	0-0	0-2	0	0	0	0	1	0	0	0	0	0	0	1
4	Daimion Collins		00:31	0-0	0-0	0-0	0	0	0	0	0	0	0	0	0	0	0	0
Team							0	2	2			0		0				
Totals				8-24	0-5	7-11	4	11	15	4	11	23	1	4	3	3	0	-8

Shooting By Period		
1 st FG%	8-24	33.3%
3PT%	0-5	0.0%
FT%	7-11	63.6%
GM FG%	8-24	33.3%
3PT%	0-5	0.0%
FT%	7-11	63.6%

Dead Ball Rebounds: 3, 1

Technical Fouls:Ware 1st12:49

	LSU	UKY	Points from		Period by Period Scoring				
Biggest lead	11 (1 st 7:17)	4 (1 st 18:20)	LSU	UKY	1st	2nd	TOT		
Best Scoring Run	8(1 st 15:49)	4(1 st 18:20)	9	3	LSU	31	35	66	
Lead Changes	1		Paint	12	12	UKY	23	48	71
Times Tied	1		Second Chance	3	5				
Time with Lead	16:35	02:16	Fast Breaks	2	0				
			Bench	5	1				



LSU at Kentucky

02/23/22 Rupp Arena, Lexington
2021-22 Men's Basketball

Game Time: 9:00 PM
Game Duration: 2:26
Attendance: 20,199

Officials: Terry Oglesby, Byron Jarrett, Patrick Evans

Period 2

Quarter Starters:

UKY	0 Toppin J	10 Mintz D	12 Brooks Jr. K	31 Grady K	34 Tshiebwe O
LSU	0 Murray B	1 Pinson X	4 Days D	5 Wilkinson M	15 Reid E

Game Time	UKY	Score	Diff	LSU
20:00	4 COLLINS D substitution out			
20:00	11 ALLEN D substitution out			
20:00	12 BROOKS JR. K substitution in			
20:00	34 TSHIEBWE O substitution in			
20:00				2 GAINES E substitution out
20:00				5 WILKINSON M substitution in
19:49	34 TSHIEBWE O foul drawn (8)			4 DAYS D foul shooting (2 - 1)
19:49	34 TSHIEBWE O free throw 1 - 2 missed			
19:49	offensive dead ball rebound (5)			
19:49	34 TSHIEBWE O free throw 2 - 2 missed			
19:49				15 REID E defensive rebound (2)
19:22				4 DAYS D 3pt FG , jump shot missed
19:19	34 TSHIEBWE O defensive rebound (8)			
19:13	12 BROOKS JR. K 2pt FG outside the paint, jump shot missed			
19:10	10 MINTZ D offensive rebound (1)			
19:08	10 MINTZ D 3pt FG second chance, jump shot made (5)	26-31	-5	
18:59		26-33	-7	15 REID E 2pt FG outside the paint, jump shot made (4)
18:59				1 PINSON X assist (4)
18:49	31 GRADY K 2pt FG in the paint, layup made (6)	28-33	-5	
18:30	12 BROOKS JR. K foul personal (3 - 1)			1 PINSON X foul drawn (2)
18:30	12 BROOKS JR. K substitution out			
18:30	23 HOPKINS B substitution in			
18:24				1 PINSON X 3pt FG , jump shot missed
18:21	34 TSHIEBWE O defensive rebound (9)			
18:10	23 HOPKINS B 3pt FG , jump shot missed			
18:06				0 MURRAY B defensive rebound (2)
17:51	jump ball situation			
17:38		28-36	-8	5 WILKINSON M 3pt FG , jump shot made (3)
17:38				0 MURRAY B assist (1)
17:16	23 HOPKINS B 2pt FG in the paint, jump shot made (2)	30-36	-6	
17:00				0 MURRAY B 3pt FG , jump shot missed
16:57	31 GRADY K defensive rebound (2)			
16:52	23 HOPKINS B foul drawn (2)			0 MURRAY B foul shooting (1 - 2)
16:52	23 HOPKINS B free throw fast break 1 - 2 made (3)	31-36	-5	
16:52				15 REID E substitution out
16:52				13 EASON T substitution in
16:52	23 HOPKINS B free throw fast break 2 - 2 made (4)	32-36	-4	
16:28				13 EASON T 2pt FG in the paint, layup blocked
16:28	0 TOPPIN J block (1)			
16:28	34 TSHIEBWE O defensive rebound (10)			
16:28	10 MINTZ D 2pt FG in the paint, layup made (7)	34-36	-2	
15:57				4 DAYS D 2pt FG in the paint, layup missed
15:54	23 HOPKINS B defensive rebound (1)			



LSU at Kentucky

02/23/22 Rupp Arena, Lexington
2021-22 Men's Basketball

Game Time: 9:00 PM
Game Duration: 2:26
Attendance: 20,199

Officials: Terry Oglesby, Byron Jarrett, Patrick Evans

Game Time	UKY	Score	Diff	LSU
15:48	Timeout media			
15:41	23 HOPKINS B 2pt FG in the paint, layup made (6)	36-36	0	
15:41	23 HOPKINS B foul drawn (3)			0 MURRAY B foul shooting (2 - 3)
15:41				5 WILKINSON M substitution out
15:41				2 GAINES E substitution in
15:41	23 HOPKINS B free throw 1 - 1 missed			
15:41	34 TSHIEBWE O offensive rebound (11)			
15:38	10 MINTZ D 3pt FG second chance, jump shot missed			
15:34	23 HOPKINS B offensive rebound (2)			
15:34	23 HOPKINS B 2pt FG second chance in the paint, layup made (8)	38-36	2	
15:33	23 HOPKINS B foul drawn (4)			0 MURRAY B foul shooting (3 - 4)
15:33	23 HOPKINS B free throw 1 - 1 made (9)	39-36	3	
15:19	10 MINTZ D foul shooting (1 - 2)			1 PINSON X foul drawn (3)
15:19		39-37	2	1 PINSON X free throw 1 - 2 made (17)
15:19		39-38	1	1 PINSON X free throw 2 - 2 made (18)
14:58	31 GRADY K foul drawn (2)			2 GAINES E foul personal (1 - 5)
14:42	31 GRADY K 3pt FG, jump shot missed			
14:40	offensive dead ball rebound (6)			
14:40	34 TSHIEBWE O foul drawn (9)			13 EASON T foul personal (3 - 6)
14:33	0 TOPPIN J 2pt FG second chance outside the paint, jump shot missed			
14:30	10 MINTZ D offensive rebound (2)			
14:29	10 MINTZ D foul drawn (1)			13 EASON T foul personal (4 - 7)
14:29				13 EASON T substitution out
14:29				15 REID E substitution in
14:29	10 MINTZ D 1&1 free throw 1 made (8)	40-38	2	
14:29	10 MINTZ D 1&1 free throw 2 made (9)	41-38	3	
14:06				1 PINSON X 2pt FG in the paint, layup missed
14:02				1 PINSON X offensive rebound (2)
14:02				1 PINSON X 2pt FG second chance in the paint, layup missed
14:01	34 TSHIEBWE O defensive rebound (12)			
13:48	23 HOPKINS B 2pt FG outside the paint, jump shot made (11)	43-38	5	
13:46				Timeout 30 Sec
13:25				0 MURRAY B 2pt FG in the paint, layup blocked
13:25	34 TSHIEBWE O block (3)			
13:20				4 DAYS D offensive rebound (5)
13:20				4 DAYS D 3pt FG second chance, jump shot missed
13:20	34 TSHIEBWE O defensive rebound (13)			
12:54	10 MINTZ D 2pt FG in the paint, jump shot missed			
12:51				4 DAYS D defensive rebound (6)
12:36				1 PINSON X 2pt FG outside the paint, jump shot missed
12:33	23 HOPKINS B defensive rebound (3)			
12:31	23 HOPKINS B turnover bad pass (1)			2 GAINES E steal (1)
12:23		43-40	3	2 GAINES E 2pt FG fast break from turnover in the paint, dunk, made (2)
12:16	34 TSHIEBWE O 2pt FG in the paint, dunk, made (14)	45-40	5	
12:16	31 GRADY K assist (2)			
11:57	34 TSHIEBWE O foul personal (1 - 3)			15 REID E foul drawn (1)
11:57	Timeout media			



LSU at Kentucky

02/23/22 Rupp Arena, Lexington
2021-22 Men's Basketball

Game Time: 9:00 PM
Game Duration: 2:26
Attendance: 20,199

Officials: Terry Oglesby, Byron Jarrett, Patrick Evans

Game Time	UKY	Score	Diff	LSU
11:57	23 HOPKINS B substitution out			
11:57	12 BROOKS JR. K substitution in			
11:57				0 MURRAY B substitution out
11:57				3 FUDGE A substitution in
11:38				2 GAINES E 3pt FG , jump shot missed
11:35	0 TOPPIN J defensive rebound (6)			
11:07	12 BROOKS JR. K 2pt FG in the paint, jump shot made (4)	47-40	7	
10:53				4 DAYS D 3pt FG , jump shot missed
10:50	defensive rebound (29)			
10:32	31 GRADY K 3pt FG , jump shot missed			
10:29				4 DAYS D defensive rebound (7)
10:12				1 PINSON X turnover bad pass (3)
10:05	31 GRADY K turnover bad pass (2)			
10:05				3 FUDGE A substitution out
10:05				4 DAYS D substitution out
10:05				5 WILKINSON M substitution in
10:05				13 EASON T substitution in
09:42	34 TSHIEBWE O foul shooting (2 - 4)			2 GAINES E foul drawn (2)
09:42		47-41	6	2 GAINES E free throw 1 - 2 made (3)
09:42		47-42	5	2 GAINES E free throw 2 - 2 made (4)
09:42				1 PINSON X substitution out
09:42				0 MURRAY B substitution in
09:28	31 GRADY K foul drawn (3)			13 EASON T foul shooting (5 - 8)
09:28				13 EASON T substitution out
09:28				4 DAYS D substitution in
09:28	31 GRADY K free throw 1 - 2 made (7)	48-42	6	
09:28	31 GRADY K free throw 2 - 2 made (8)	49-42	7	
09:06	34 TSHIEBWE O foul shooting (3 - 5)			15 REID E foul drawn (2)
09:06				15 REID E free throw 1 - 2 missed
09:06				offensive dead ball rebound (5)
09:06		49-43	6	15 REID E free throw 2 - 2 made (5)
09:02	31 GRADY K turnover lost ball (3)			4 DAYS D steal (1)
08:58		49-45	4	2 GAINES E 2pt FG fast break from turnover in the paint, layup made (6)
08:39	10 MINTZ D foul drawn (2)			15 REID E foul shooting (3 - 9)
08:39	10 MINTZ D free throw 1 - 2 made (10)	50-45	5	
08:39	34 TSHIEBWE O substitution out			
08:39	4 COLLINS D substitution in			
08:39	10 MINTZ D free throw 2 - 2 made (11)	51-45	6	
08:21	10 MINTZ D steal (2)			2 GAINES E turnover lost ball (2)
07:58	4 COLLINS D turnover bad pass (1)			15 REID E steal (1)
07:48	4 COLLINS D foul personal (1 - 6)			15 REID E foul drawn (3)
07:48		Timeout media		
07:48	4 COLLINS D substitution out			
07:48	34 TSHIEBWE O substitution in			
07:48				5 WILKINSON M substitution out
07:48				1 PINSON X substitution in
07:44				15 REID E turnover bad pass (1)
07:34	12 BROOKS JR. K 2pt FG from turnover outside the paint, jump shot missed			



LSU at Kentucky

02/23/22 Rupp Arena, Lexington
2021-22 Men's Basketball

Game Time: 9:00 PM
Game Duration: 2:26
Attendance: 20,199

Officials: Terry Oglesby, Byron Jarrett, Patrick Evans

Game Time	UKY	Score	Diff	LSU
07:31	34 TSHIEBWE O offensive rebound (14)			
07:19	31 GRADY K 2pt FG from turnover second chance in the paint, jump shot missed			
07:10	34 TSHIEBWE O offensive rebound (15)			
07:10	34 TSHIEBWE O 2pt FG from turnover second chance in the paint, layup made (16)	53-45	8	
07:00				1 PINSON X 3pt FG , jump shot missed
06:56				offensive rebound (22)
06:56	12 BROOKS JR. K substitution out			
06:56	23 HOPKINS B substitution in			
06:47		53-48	5	2 GAINES E 3pt FG second chance, jump shot made (9)
06:47				1 PINSON X assist (5)
06:16	10 MINTZ D 2pt FG outside the paint, jump shot made (13)	55-48	7	
05:46				2 GAINES E 3pt FG , jump shot missed
05:42				offensive dead ball rebound (6)
05:42	0 TOPPIN J foul personal (1 - 7)			15 REID E foul drawn (4)
05:42				15 REID E 1&1 free throw 1 missed
05:42	defensive rebound (32)			
05:25	31 GRADY K 2pt FG in the paint, layup made (10)	57-48	9	
05:25	31 GRADY K foul drawn (4)			15 REID E foul shooting (4 - 10)
05:25	31 GRADY K free throw 1 - 1 made (11)	58-48	10	
05:10				0 MURRAY B 3pt FG , jump shot missed
05:07	31 GRADY K defensive rebound (3)			
04:57	31 GRADY K 2pt FG in the paint, layup made (13)	60-48	12	
04:39	10 MINTZ D foul personal (2 - 8)			1 PINSON X foul drawn (4)
04:39				4 DAYS D substitution out
04:39				3 FUDGE A substitution in
04:39		60-49	11	1 PINSON X 1&1 free throw 1 made (19)
04:39		60-50	10	1 PINSON X 1&1 free throw 2 made (20)
04:08	31 GRADY K 3pt FG , jump shot missed			
04:02	23 HOPKINS B offensive rebound (4)			
04:02	23 HOPKINS B 2pt FG second chance in the paint, layup made (13)	62-50	12	
03:54				Timeout 30 Sec
03:54				3 FUDGE A substitution out
03:54				4 DAYS D substitution in
03:48				4 DAYS D 3pt FG , jump shot missed
03:45	34 TSHIEBWE O defensive rebound (16)			
03:17	0 TOPPIN J 3pt FG , jump shot made (5)	65-50	15	
03:17	31 GRADY K assist (3)			
02:46		65-52	13	1 PINSON X 2pt FG in the paint, layup made (22)
02:13	0 TOPPIN J foul drawn (1)			15 REID E foul shooting (5 - 11)
02:12				15 REID E substitution out
02:12				5 WILKINSON M substitution in
02:11	0 TOPPIN J free throw 1 - 2 missed			
02:11	offensive dead ball rebound (7)			
02:11	0 TOPPIN J free throw 2 - 2 made (6)	66-52	14	
01:59				1 PINSON X 3pt FG , jump shot missed
01:56				4 DAYS D offensive rebound (8)



LSU at Kentucky

02/23/22 Rupp Arena, Lexington
2021-22 Men's Basketball

Game Time: 9:00 PM
Game Duration: 2:26
Attendance: 20,199

Officials: Terry Oglesby, Byron Jarrett, Patrick Evans

Game Time	UKY	Score	Diff	LSU
01:52		66-54	12	2 GAINES E 2pt FG second chance in the paint, layup made (11)
01:52				4 DAYS D assist (1)
01:36	turnover 10 sec back court (9)			
01:36	23 HOPKINS B substitution out			
01:36	12 BROOKS JR. K substitution in			
01:29		66-57	9	5 WILKINSON M 3pt FG from turnover, jump shot made (6)
01:29				1 PINSON X assist (6)
01:29				Timeout 60 Sec
01:25	0 TOPPIN J foul drawn (2)			2 GAINES E foul personal (2 - 12)
01:25	0 TOPPIN J free throw fast break 1 - 2 made (7)	67-57	10	
01:25	34 TSHIEBWE O substitution out			
01:25	23 HOPKINS B substitution in			
01:25	0 TOPPIN J free throw fast break 2 - 2 made (8)	68-57	11	
01:17	10 MINTZ D foul personal (3 - 9)			1 PINSON X foul drawn (5)
01:17		68-58	10	1 PINSON X 1&1 free throw 1 made (23)
01:17	23 HOPKINS B substitution out			
01:17	34 TSHIEBWE O substitution in			
01:17		68-59	9	1 PINSON X 1&1 free throw 2 made (24)
01:11	12 BROOKS JR. K turnover bad pass (2)			2 GAINES E steal (2)
01:06		68-62	6	0 MURRAY B 3pt FG from turnover, jump shot made (3)
01:06				1 PINSON X assist (7)
00:44	Timeout 30 Sec			
00:43	10 MINTZ D turnover travel (2)			
00:34	10 MINTZ D foul shooting (4 - 10)			1 PINSON X foul drawn (6)
00:34		68-63	5	1 PINSON X free throw 1 - 2 made (25)
00:34		68-64	4	1 PINSON X free throw 2 - 2 made (26)
00:34	12 BROOKS JR. K turnover (3)			
00:34	34 TSHIEBWE O substitution out			
00:34	23 HOPKINS B substitution in			
00:26				1 PINSON X 2pt FG from turnover in the paint, layup missed
00:23	12 BROOKS JR. K defensive rebound (1)			
00:13	12 BROOKS JR. K foul drawn (1)			0 MURRAY B foul personal (4 - 13)
00:13	12 BROOKS JR. K free throw 1 - 2 made (5)	69-64	5	
00:13	12 BROOKS JR. K free throw 2 - 2 made (6)	70-64	6	
00:07				4 DAYS D 3pt FG , jump shot missed
00:05				2 GAINES E offensive rebound (2)
00:03		70-66	4	4 DAYS D 2pt FG second chance in the paint, layup made (10)
00:03				1 PINSON X assist (8)
00:03	Timeout 60 Sec			
00:03	12 BROOKS JR. K substitution out			
00:03	34 TSHIEBWE O substitution in			
00:03	Timeout 30 Sec			
00:03	34 TSHIEBWE O foul drawn (10)			0 MURRAY B foul personal (5 - 14)
00:03				0 MURRAY B substitution out
00:03				11 WILLIAMS J substitution in
00:03	34 TSHIEBWE O free throw fast break 1 - 2 missed			
00:03	offensive dead ball rebound (8)			
00:03	34 TSHIEBWE O free throw fast break 2 - 2 made (17)	71-66	5	



Official Basketball Play by Play - Second Half

LSU at Kentucky

02/23/22 Rupp Arena, Lexington
2021-22 Men's Basketball

Game Time: 9:00 PM

Game Duration: 2:26

Attendance: 20,199

Officials: Terry Oglesby, Byron Jarrett, Patrick Evans

Game Time	UKY	Score	Diff	LSU
00:03	34 TSHIEBWE O substitution out			
00:03	12 BROOKS JR. K substitution in			
END OF GAME				
UKY 71-66 LSU				



LSU at Kentucky

02/23/22 Rupp Arena, Lexington
2021-22 Men's Basketball

Game Time: 9:00 PM
Game Duration: 2:26
Attendance: 20,199

Officials: Terry Oglesby, Byron Jarrett, Patrick Evans

LSU - 35

NO.	Name	Min	FG			Rebounds			Fouls		TP	AS	TO	ST	Blocks		+/-
			M-A	M-A	M-A	OR	DR	TOT	PF	FD					BS	BA	
4	Darius Days	F 18:38	1-7	0-5	0-0	2	2	4	1	0	2	1	0	1	0	0	-15
5	Mwani Wilkinson	F 08:48	2-2	2-2	0-0	0	0	0	0	0	6	0	0	0	0	0	1
15	Efton Reid	C 15:25	1-1	0-0	1-3	0	1	1	3	4	3	0	1	1	0	0	-15
0	Brandon Murray	G 17:42	1-4	1-3	0-0	0	1	1	5	0	3	1	0	0	0	1	-12
1	Xavier Pinson	G 18:06	1-8	0-3	8-8	1	0	1	0	5	10	5	1	0	0	0	-12
13	Tari Eason	03:00	0-1	0-0	0-0	0	0	0	3	0	0	0	0	0	0	1	-4
2	Eric Gaines	15:41	4-6	1-3	2-2	1	0	1	2	1	11	0	1	2	0	0	-5
3	Alex Fudge	02:37	0-0	0-0	0-0	0	0	0	0	0	0	0	0	0	0	0	-2
11	Justice Williams	00:03	0-0	0-0	0-0	0	0	0	0	0	0	0	0	0	0	0	-1
Team						1	0	1			0		0				
Totals			10-29	4-16	11-13	5	4	9	14	10	35	7	3	4	0	2	-13

Shooting By Period		
2nd FG%	10-29	34.5%
3PT%	4-16	25.0%
FT%	11-13	84.6%
GM FG%	10-29	34.5%
3PT%	4-16	25.0%
FT%	11-13	84.6%

Dead Ball Rebounds: 2, 0

Technical Fouls::NONE

Kentucky - 48

NO.	Name	Min	FG			Rebounds			Fouls		TP	AS	TO	ST	Blocks		+/-
			M-A	M-A	M-A	OR	DR	TOT	PF	FD					BS	BA	
0	Jacob Toppin	F 20:00	1-2	1-1	3-4	0	1	1	1	2	6	0	0	0	1	0	13
12	Keion Brooks Jr.	F 08:06	1-3	0-0	2-2	0	1	1	1	1	4	0	2	0	0	0	-2
34	Oscar Tshiebwe	F 18:27	2-2	0-0	1-4	3	6	9	3	3	5	0	0	0	1	0	12
10	Davion Mintz	G 20:00	3-5	1-2	4-4	2	0	2	4	2	11	0	1	1	0	0	13
31	Kellan Grady	G 20:00	3-7	0-3	3-3	0	2	2	0	3	9	2	2	0	0	0	13
11	Dontaie Allen	00:00	0-0	0-0	0-0	0	0	0	0	0	0	0	0	0	0	0	0
23	Bryce Hopkins	12:36	5-6	0-1	3-4	2	2	4	0	3	13	0	1	0	0	0	15
4	Daimion Collins	00:51	0-0	0-0	0-0	0	0	0	1	0	0	0	1	0	0	0	1
Team						0	2	2			0		1				
Totals			15-25	2-7	16-21	7	14	21	10	14	48	2	8	1	2	0	13

Shooting By Period		
2nd FG%	15-25	60.0%
3PT%	2-7	28.6%
FT%	16-21	76.2%
GM FG%	15-25	60.0%
3PT%	2-7	28.6%
FT%	16-21	76.2%

Dead Ball Rebounds: 4, 0

Technical Fouls::NONE

	LSU	UKY
Biggest lead	8 (2 nd 19:49)	15 (2 nd 3:17)
Best Scoring Run	7(2 nd 0:34)	11(2 nd 15:33)
Lead Changes	1	
Times Tied	1	
Time with Lead	04:08	15:34

Points from	LSU	UKY
Turnovers	14	2
Paint	10	22
Second Chance	7	12
Fast Breaks	6	5
Bench	11	13

	Period by Period Scoring		
	1st	2nd	TOT
LSU	31	35	66
UKY	23	48	71



LSU at Kentucky

02/23/22 Rupp Arena, Lexington
2021-22 Men's Basketball

Game Time: 9:00 PM
Game Duration: 2:26
Attendance: 20,199

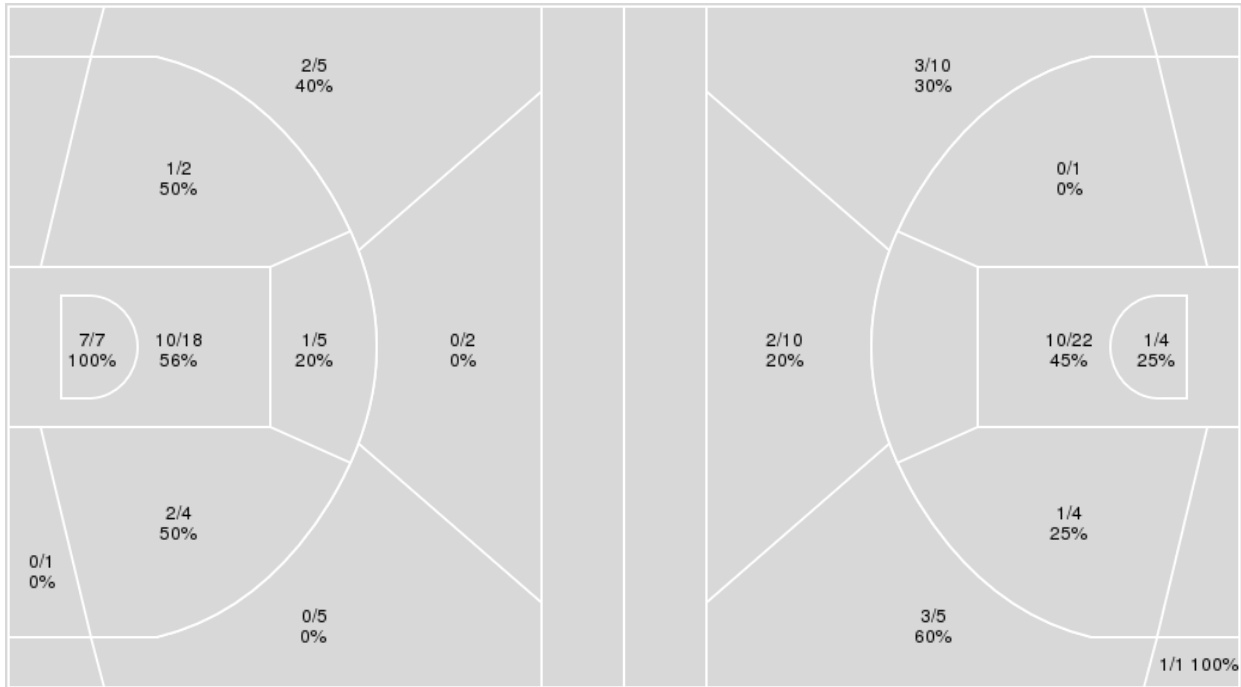
Officials: Terry Oglesby, Byron Jarrett, Patrick Evans

{ Players => 0, 1, 2, 3, 4, 10, 11, 12, 14, 20, 21, 23, 25, 31, 34, 55; } FG
Types => All; Results => All;

{ Players => 0, 1, 2, 3, 4, 5, 10, 11, 13, 15, 20, 21, 22, 24, 25, 30, 44; }
FG Types => All; Results => All;

Kentucky

LSU



Kentucky	M/A	%
Field Goals	23/49	47
2 Points	21/37	57
3 Points	2/12	17
Free Throws	23/32	72

LSU	M/A	%
Field Goals	21/57	37
2 Points	12/31	39
3 Points	9/26	35
Free Throws	15/18	83



LSU at Kentucky

02/23/22 Rupp Arena, Lexington
2021-22 Men's Basketball

Game Time: 9:00 PM
Game Duration: 2:26
Attendance: 20,199

Officials: Terry Oglesby, Byron Jarrett, Patrick Evans

LSU

No	Name	Mins		Score		Points Diff		Points per Min		Assists		Rebounds		Steals		Turnovers	
		On	Off	On	Off	On	Off	On	Off	On	Off	On	Off	On	Off	On	Off
0	Brandon Murray	33:33	06:27	55 - 65	11 - 6	-10	5	1.64	1.71	11	1	21	3	6	0	7	1
1	Xavier Pinson	34:23	05:37	61 - 63	5 - 8	-2	-3	1.77	0.89	11	1	21	3	4	2	4	4
2	Eric Gaines	25:18	14:42	41 - 45	25 - 26	-4	-1	1.62	1.70	7	5	13	11	4	2	8	0
3	Alex Fudge	06:21	33:39	9 - 7	57 - 64	2	-7	1.42	1.69	1	11	3	21	0	6	1	7
4	Darius Days	38:38	01:22	62 - 69	4 - 2	-7	2	1.60	2.93	12	0	24	0	6	0	8	0
5	Mwani Wilkinson	23:19	16:41	48 - 40	18 - 31	8	-13	2.06	1.08	10	2	16	8	5	1	4	4
11	Justice Williams	00:03	39:57	0 - 1	66 - 70	-1	-4	0.00	1.65	0	12	0	24	0	6	0	8
13	Tari Eason	12:56	27:04	26 - 18	40 - 53	8	-13	2.01	1.48	3	9	7	17	2	4	0	8
15	Efton Reid	25:29	14:31	28 - 47	38 - 24	-19	14	1.10	2.62	5	7	15	9	3	3	8	0

Kentucky

No	Name	Mins		Score		Points Diff		Points per Min		Assists		Rebounds		Steals		Turnovers	
		On	Off	On	Off	On	Off	On	Off	On	Off	On	Off	On	Off	On	Off
0	Jacob Toppin	39:04	00:56	70 - 66	1 - 0	4	1	1.79	1.07	3	0	36	0	4	0	12	0
4	Daimion Collins	01:22	38:38	3 - 2	68 - 64	1	4	2.20	1.76	0	3	1	35	1	3	1	11
10	Davion Mintz	37:53	02:07	69 - 61	2 - 5	8	-3	1.82	0.94	3	0	35	1	4	0	11	1
11	Dontaie Allen	02:14	37:46	2 - 5	69 - 61	-3	8	0.90	1.83	0	3	2	34	0	4	1	11
12	Keion Brooks Jr.	21:22	18:38	32 - 43	39 - 23	-11	16	1.50	2.09	1	2	16	20	3	1	9	3
23	Bryce Hopkins	15:34	24:26	37 - 21	34 - 45	16	-11	2.38	1.39	2	1	16	20	1	3	2	10
31	Kellan Grady	40:00	00:00	71 - 66	0 - 0	5	0	1.78	0.00	3	0	36	0	4	0	12	0
34	Oscar Tshiebwe	38:20	01:40	67 - 63	4 - 3	4	1	1.75	2.40	3	0	34	2	3	1	11	1
55	Lance Ware	04:11	35:49	4 - 3	67 - 63	1	4	0.96	1.87	0	3	4	32	0	4	1	11



LSU at Kentucky

02/23/22 Rupp Arena, Lexington
2021-22 Men's Basketball

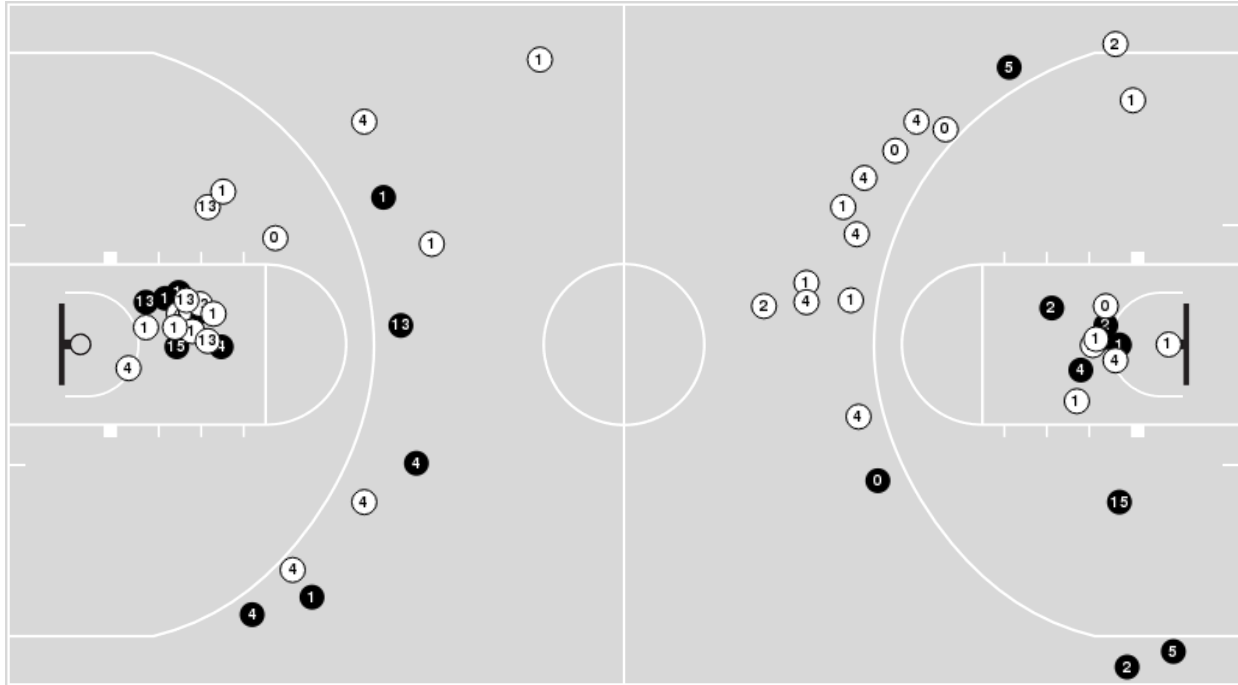
Game Time: 9:00 PM
Game Duration: 2:26
Attendance: 20,199

Officials: Terry Oglesby, Byron Jarrett, Patrick Evans

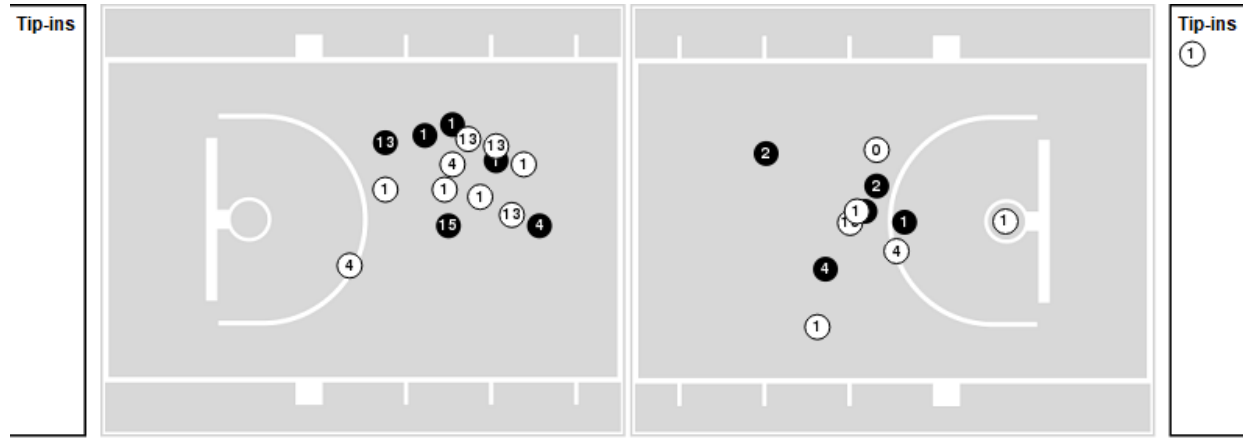
Players => 0, 1, 2, 3, 4, 5, 10, 11, 13, 15, 20, 21, 22, 24, 25, 30, 44 FG Types=>All Results=>All

LSU

All Field Goals



Blow Up Chart



● Made ○ Missed N - Player Number

LSU	M/A	%
Field Goals	21/57	37
2 Points	12/31	39
3 Points	9/26	35
Free Throws	15/18	83

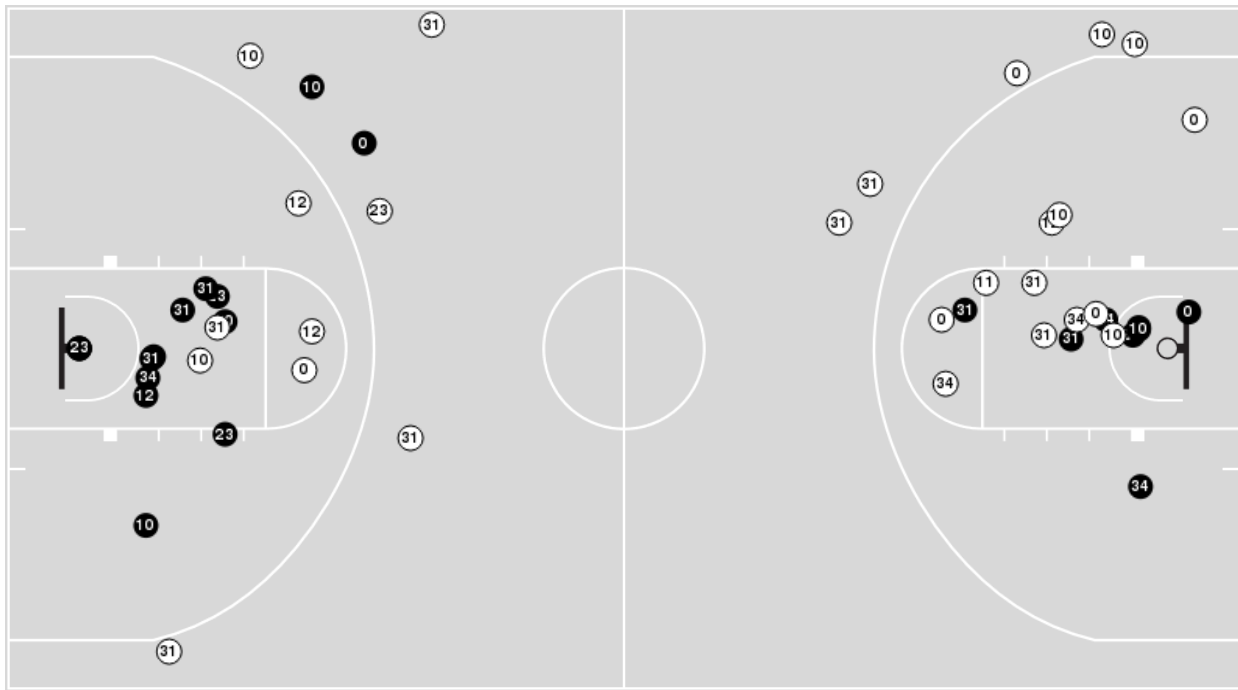
LSU	M/A	%
Points in the Paint	22 (11 / 26)	42
Fast Break Points	8 (5/5)	100
Second Chance Points	10 (4/11)	36
Effective FG%	45	



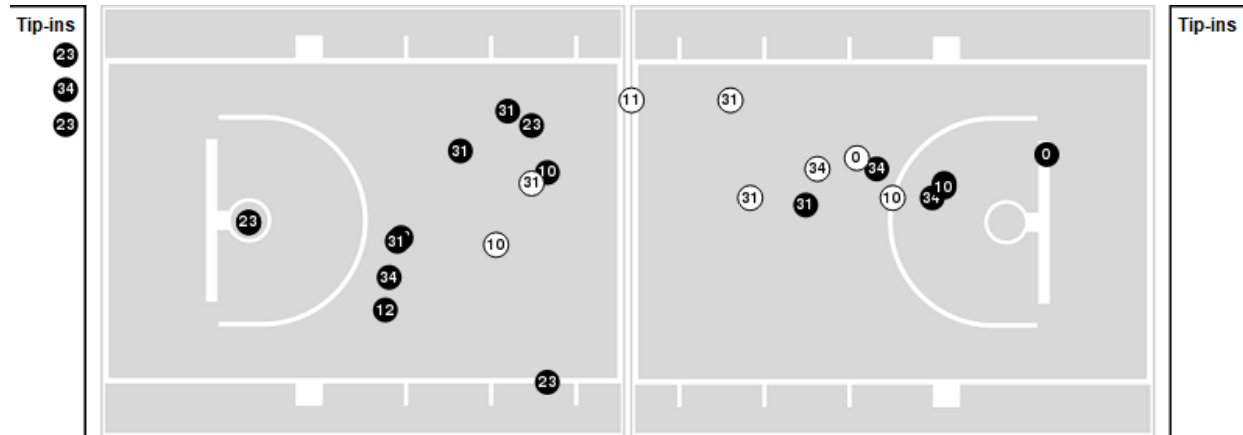
Players => 0, 1, 2, 3, 4, 10, 11, 12, 14, 20, 21, 23, 25, 31, 34, 55FG Types=>AllResults=>All

Kentucky

All Field Goals



Blow Up Chart



● Made ○ Missed N - Player Number

Kentucky	M/A	%
Field Goals	23/49	47
2 Points	21/37	57
3 Points	2/12	17
Free Throws	23/32	72

Kentucky	M/A	%
Points in the Paint	34 (17 / 25)	68
Fast Break Points	5 (5/6)	83
Second Chance Points	17 (10/15)	67
Effective FG%	49	



LSU at Kentucky

02/23/22 Rupp Arena, Lexington
2021-22 Men's Basketball

Game Time: 9:00 PM
Game Duration: 2:26
Attendance: 20,199

Officials: Terry Oglesby, Byron Jarrett, Patrick Evans

LSU

Lineup	Quarter On	Time On	Quarter Off	Time Off	Time on Court	Score	Score Diff	Reb	Stl	Tov	Ass	PPP
0- Murray B/ 1- Pinson X/ 4- Days D/ 5- Wilkinson M/ 15- Reid E/	1	20:00	1	17:38	02:22	3-5	-2	2	0	0	1	1.0000
0- Murray B/ 1- Pinson X/ 4- Days D/ 5- Wilkinson M/ 13- Eason T/	1	17:38	1	10:45	06:53	17-8	9	5	2	0	2	1.4310
1- Pinson X/ 2- Gaines E/ 3- Fudge A/ 4- Days D/ 13- Eason T/	1	10:45	1	07:42	03:03	5-2	3	2	0	0	1	1.2500
1- Pinson X/ 2- Gaines E/ 3- Fudge A/ 4- Days D/ 15- Reid E/	1	07:42	1	07:01	00:41	2-1	1	0	0	0	0	2.0000
0- Murray B/ 1- Pinson X/ 2- Gaines E/ 4- Days D/ 15- Reid E/	1	07:01	1	05:23	01:38	0-2	-2	1	0	2	0	0.0000
0- Murray B/ 2- Gaines E/ 4- Days D/ 5- Wilkinson M/ 15- Reid E/	1	05:23	1	03:04	02:19	2-1	1	2	0	2	1	0.6667
0- Murray B/ 1- Pinson X/ 4- Days D/ 5- Wilkinson M/ 15- Reid E/	1	03:04	1	01:56	01:08	0-0	0	2	0	0	0	0.0000
0- Murray B/ 2- Gaines E/ 4- Days D/ 5- Wilkinson M/ 15- Reid E/	1	01:56	1	00:56	01:00	0-2	-2	1	0	1	0	0.0000
1- Pinson X/ 2- Gaines E/ 4- Days D/ 5- Wilkinson M/ 15- Reid E/	1	00:56	1	00:31	00:25	2-0	2	0	0	0	0	1.5152
0- Murray B/ 2- Gaines E/ 4- Days D/ 5- Wilkinson M/ 15- Reid E/	1	00:31	1	00:07	00:24	0-1	-1	0	0	0	0	0.0000
0- Murray B/ 1- Pinson X/ 2- Gaines E/ 4- Days D/ 15- Reid E/	1	00:07	2	20:00	00:07	0-1	-1	0	0	0	0	0.0000
0- Murray B/ 1- Pinson X/ 4- Days D/ 5- Wilkinson M/ 15- Reid E/	2	20:00	2	16:52	03:08	5-8	-3	2	0	0	2	1.0000
0- Murray B/ 1- Pinson X/ 4- Days D/ 5- Wilkinson M/ 13- Eason T/	2	16:52	2	15:41	01:11	0-5	-5	0	0	0	0	0.0000
0- Murray B/ 1- Pinson X/ 2- Gaines E/ 4- Days D/ 13- Eason T/	2	15:41	2	14:29	01:12	2-3	-1	0	0	0	0	2.2727
0- Murray B/ 1- Pinson X/ 2- Gaines E/ 4- Days D/ 15- Reid E/	2	14:29	2	11:57	02:32	2-6	-4	3	1	0	0	0.5000
1- Pinson X/ 2- Gaines E/ 3- Fudge A/ 4- Days D/ 15- Reid E/	2	11:57	2	10:05	01:52	0-2	-2	1	0	1	0	0.0000
1- Pinson X/ 2- Gaines E/ 5- Wilkinson M/ 13- Eason T/ 15- Reid E/	2	10:05	2	09:42	00:23	2-0	2	0	0	0	0	2.2727
0- Murray B/ 2- Gaines E/ 5- Wilkinson M/ 13- Eason T/ 15- Reid E/	2	09:42	2	09:28	00:14	0-0	0	0	0	0	0	0.0000
0- Murray B/ 2- Gaines E/ 4- Days D/ 5- Wilkinson M/ 15- Reid E/	2	09:28	2	07:48	01:40	3-4	-1	0	2	1	0	1.0417
0- Murray B/ 1- Pinson X/ 2- Gaines E/ 4- Days D/ 15- Reid E/	2	07:48	2	04:39	03:09	3-9	-6	1	0	1	1	0.6757
0- Murray B/ 1- Pinson X/ 2- Gaines E/ 3- Fudge A/ 15- Reid E/	2	04:39	2	03:54	00:45	2-2	0	0	0	0	0	2.2727
0- Murray B/ 1- Pinson X/ 2- Gaines E/ 4- Days D/ 15- Reid E/	2	03:54	2	02:12	01:42	2-3	-1	0	0	0	0	1.0000
0- Murray B/ 1- Pinson X/ 2- Gaines E/ 4- Days D/ 5- Wilkinson M/	2	02:12	2	00:03	02:09	14-5	9	2	1	0	4	2.0710
1- Pinson X/ 2- Gaines E/ 4- Days D/ 5- Wilkinson M/ 11- Williams J/	2	00:03	2	00:00	00:03	0-1	-1	0	0	0	0	0.0000



LSU at Kentucky

02/23/22 Rupp Arena, Lexington
2021-22 Men's Basketball

Game Time: 9:00 PM
Game Duration: 2:26
Attendance: 20,199

Officials: Terry Oglesby, Byron Jarrett, Patrick Evans

Kentucky

Lineup	Quarter On	Time On	Quarter Off	Time Off	Time on Court	Score	Score Diff	Reb	Stl	Tov	Ass	PPP
0- Toppin J/ 10- Mintz D/ 12- Brooks Jr. K/ 31- Grady K/ 34- Tshiebwe O/	1	20:00	1	15:19	04:41	8-11	-3	4	0	1	1	1.1628
0- Toppin J/ 10- Mintz D/ 31- Grady K/ 34- Tshiebwe O/ 55- Ware L/	1	15:19	1	12:49	02:30	3-3	0	3	0	1	0	0.6757
0- Toppin J/ 10- Mintz D/ 12- Brooks Jr. K/ 31- Grady K/ 34- Tshiebwe O/	1	12:49	1	10:45	02:04	2-6	-4	2	0	1	0	0.6667
0- Toppin J/ 11- Allen D/ 12- Brooks Jr. K/ 31- Grady K/ 34- Tshiebwe O/	1	10:45	1	09:23	01:22	2-5	-3	0	0	1	0	1.0000
0- Toppin J/ 11- Allen D/ 31- Grady K/ 34- Tshiebwe O/ 55- Ware L/	1	09:23	1	08:38	00:45	0-0	0	1	0	0	0	0.0000
10- Mintz D/ 23- Hopkins B/ 31- Grady K/ 34- Tshiebwe O/ 55- Ware L/	1	08:38	1	07:42	00:56	1-0	1	0	0	0	0	1.1364
0- Toppin J/ 10- Mintz D/ 23- Hopkins B/ 31- Grady K/ 34- Tshiebwe O/	1	07:42	1	05:40	02:02	2-2	0	1	1	0	0	1.0638
0- Toppin J/ 10- Mintz D/ 12- Brooks Jr. K/ 31- Grady K/ 34- Tshiebwe O/	1	05:40	1	00:31	05:09	3-2	1	3	2	0	0	0.4360
0- Toppin J/ 4- Collins D/ 10- Mintz D/ 31- Grady K/ 34- Tshiebwe O/	1	00:31	1	00:07	00:24	2-2	0	0	0	0	0	2.2727
0- Toppin J/ 4- Collins D/ 10- Mintz D/ 11- Allen D/ 31- Grady K/	1	00:07	2	20:00	00:07	0-0	0	1	0	0	0	0.0000
0- Toppin J/ 10- Mintz D/ 12- Brooks Jr. K/ 31- Grady K/ 34- Tshiebwe O/	2	20:00	2	18:30	01:30	5-2	3	2	0	0	0	1.7361
0- Toppin J/ 10- Mintz D/ 23- Hopkins B/ 31- Grady K/ 34- Tshiebwe O/	2	18:30	2	11:57	06:33	17-7	10	10	0	1	1	1.4605
0- Toppin J/ 10- Mintz D/ 12- Brooks Jr. K/ 31- Grady K/ 34- Tshiebwe O/	2	11:57	2	08:39	03:18	5-5	0	2	0	2	0	0.9398
0- Toppin J/ 4- Collins D/ 10- Mintz D/ 12- Brooks Jr. K/ 31- Grady K/	2	08:39	2	07:48	00:51	1-0	1	0	1	1	0	0.6944
0- Toppin J/ 10- Mintz D/ 12- Brooks Jr. K/ 31- Grady K/ 34- Tshiebwe O/	2	07:48	2	06:56	00:52	2-0	2	2	0	0	0	2.0000
0- Toppin J/ 10- Mintz D/ 23- Hopkins B/ 31- Grady K/ 34- Tshiebwe O/	2	06:56	2	01:36	05:20	13-9	4	4	0	1	1	1.7760
0- Toppin J/ 10- Mintz D/ 12- Brooks Jr. K/ 31- Grady K/ 34- Tshiebwe O/	2	01:36	2	01:25	00:11	1-3	-2	0	0	0	0	2.2727
0- Toppin J/ 10- Mintz D/ 12- Brooks Jr. K/ 23- Hopkins B/ 31- Grady K/	2	01:25	2	01:17	00:08	1-1	0	0	0	0	0	2.2727
0- Toppin J/ 10- Mintz D/ 12- Brooks Jr. K/ 31- Grady K/ 34- Tshiebwe O/	2	01:17	2	00:34	00:42	0-6	-6	0	0	3	0	0.0000
0- Toppin J/ 10- Mintz D/ 12- Brooks Jr. K/ 23- Hopkins B/ 31- Grady K/	2	00:34	2	00:03	00:31	2-2	0	1	0	0	0	2.2727
0- Toppin J/ 10- Mintz D/ 23- Hopkins B/ 31- Grady K/ 34- Tshiebwe O/	2	00:03	2	00:03	00:01	1-0	1	0	0	0	0	1.1364
0- Toppin J/ 10- Mintz D/ 12- Brooks Jr. K/ 23- Hopkins B/ 31- Grady K/	2	00:03	2	00:00	00:03	0-0	0	0	0	0	0	0.0000



LSU at Kentucky

02/23/22 Rupp Arena, Lexington
2021-22 Men's Basketball

Game Time: 9:00 PM
Game Duration: 2:26
Attendance: 20,199

Officials: Terry Oglesby, Byron Jarrett, Patrick Evans

LSU

Lineup	Time	Score	Score Diff	Pts/Min	Reb	Stl	Tov	Ass	PPP
0- Murray B/ 1- Pinson X/ 2- Gaines E/ 4- Days D/ 15- Reid E/	09:08	7-21	-14	0.7664	5	1	3	1	0.5208
0- Murray B/ 1- Pinson X/ 4- Days D/ 5- Wilkinson M/ 13- Eason T/	08:04	17-13	4	2.1074	5	2	0	2	1.2248
0- Murray B/ 1- Pinson X/ 4- Days D/ 5- Wilkinson M/ 15- Reid E/	06:38	8-13	-5	1.2060	6	0	0	3	0.8000
0- Murray B/ 2- Gaines E/ 4- Days D/ 5- Wilkinson M/ 15- Reid E/	05:23	5-8	-3	0.9288	3	2	4	1	0.7267
1- Pinson X/ 2- Gaines E/ 3- Fudge A/ 4- Days D/ 13- Eason T/	03:03	5-2	3	1.6393	2	0	0	1	1.2500
1- Pinson X/ 2- Gaines E/ 3- Fudge A/ 4- Days D/ 15- Reid E/	02:33	2-3	-1	0.7843	1	0	1	0	0.5000
0- Murray B/ 1- Pinson X/ 2- Gaines E/ 4- Days D/ 5- Wilkinson M/	02:09	14-5	9	6.5116	2	1	0	4	2.0710
0- Murray B/ 1- Pinson X/ 2- Gaines E/ 4- Days D/ 13- Eason T/	01:12	2-3	-1	1.6667	0	0	0	0	2.2727
0- Murray B/ 1- Pinson X/ 2- Gaines E/ 3- Fudge A/ 15- Reid E/	00:45	2-2	0	2.6667	0	0	0	0	2.2727
1- Pinson X/ 2- Gaines E/ 4- Days D/ 5- Wilkinson M/ 15- Reid E/	00:25	2-0	2	4.8000	0	0	0	0	1.5152
1- Pinson X/ 2- Gaines E/ 5- Wilkinson M/ 13- Eason T/ 15- Reid E/	00:23	2-0	2	5.2174	0	0	0	0	2.2727
0- Murray B/ 2- Gaines E/ 5- Wilkinson M/ 13- Eason T/ 15- Reid E/	00:14	0-0	0	0.0000	0	0	0	0	0.0000
1- Pinson X/ 2- Gaines E/ 4- Days D/ 5- Wilkinson M/ 11- Williams J/	00:03	0-1	-1	0.0000	0	0	0	0	0.0000



LSU at Kentucky

02/23/22 Rupp Arena, Lexington
2021-22 Men's Basketball

Game Time: 9:00 PM
Game Duration: 2:26
Attendance: 20,199

Officials: Terry Oglesby, Byron Jarrett, Patrick Evans

Kentucky

Lineup	Time	Score	Score Diff	Pts/Min	Reb	Stl	Tov	Ass	PPP
0- Toppin J/ 10- Mintz D/ 12- Brooks Jr. K/ 31- Grady K/ 34- Tshiebwe O/	18:27	26-35	-9	1.4092	15	2	7	1	0.8844
0- Toppin J/ 10- Mintz D/ 23- Hopkins B/ 31- Grady K/ 34- Tshiebwe O/	13:56	33-18	15	2.3684	15	1	2	2	1.5193
0- Toppin J/ 10- Mintz D/ 31- Grady K/ 34- Tshiebwe O/ 55- Ware L/	02:30	3-3	0	1.2000	3	0	1	0	0.6757
0- Toppin J/ 11- Allen D/ 12- Brooks Jr. K/ 31- Grady K/ 34- Tshiebwe O/	01:22	2-5	-3	1.4634	0	0	1	0	1.0000
10- Mintz D/ 23- Hopkins B/ 31- Grady K/ 34- Tshiebwe O/ 55- Ware L/	00:56	1-0	1	1.0714	0	0	0	0	1.1364
0- Toppin J/ 4- Collins D/ 10- Mintz D/ 12- Brooks Jr. K/ 31- Grady K/	00:51	1-0	1	1.1765	0	1	1	0	0.6944
0- Toppin J/ 11- Allen D/ 31- Grady K/ 34- Tshiebwe O/ 55- Ware L/	00:45	0-0	0	0.0000	1	0	0	0	0.0000
0- Toppin J/ 10- Mintz D/ 12- Brooks Jr. K/ 23- Hopkins B/ 31- Grady K/	00:42	3-3	0	4.2857	1	0	0	0	2.2727
0- Toppin J/ 4- Collins D/ 10- Mintz D/ 31- Grady K/ 34- Tshiebwe O/	00:24	2-2	0	5.0000	0	0	0	0	2.2727
0- Toppin J/ 4- Collins D/ 10- Mintz D/ 11- Allen D/ 31- Grady K/	00:07	0-0	0	0.0000	1	0	0	0	0.0000