



LSU at TCU

01/29/22 Ed and Rae Schollmaier Arena, Fort Worth
2021-22 Men's Basketball

Game Time: 11:00 AM
Game Duration: 2:06
Attendance: 6,539

Officials: Gary Maxwell, Darron George, Bret Smith

LSU - 68

Record: 16-5

NO.	Name	F	Min	FG			3P			FT			Rebounds			Fouls		TP	AS	TO	ST	Blocks		+/-
				M-A	M-A	M-A	OR	DR	TOT	PF	FD	OR	DR	TOT	BS	BA								
4	Darius Days	F	32:34	5-14	1-3	3-4	6	6	12	4	5	14	0	0	0	1	1	0	1	1	0	2		
13	Tari Eason	F	25:51	7-12	0-2	2-3	2	1	3	3	2	16	1	1	3	0	0	0	0	0	0	-4		
15	Efton Reid	C	23:23	2-7	0-2	2-2	4	3	7	4	3	6	1	2	1	0	1	0	1	0	1	-8		
0	Brandon Murray	G	34:24	4-13	2-4	0-0	1	2	3	0	0	10	5	1	0	2	2	0	2	2	0	-3		
2	Eric Gaines	G	32:11	4-10	1-3	5-6	1	1	2	4	4	14	6	2	3	0	0	0	0	0	0	-4		
1	Xavier Pinson		07:03	0-3	0-2	2-2	0	0	0	0	1	2	0	0	0	0	0	0	0	0	0	-1		
3	Alex Fudge		06:23	0-0	0-0	0-0	0	1	1	0	1	0	0	1	0	0	0	0	0	0	0	-8		
5	Mwani Wilkinson		25:11	2-3	2-2	0-0	1	3	4	4	0	6	2	1	0	0	0	0	0	0	0	-6		
11	Justice Williams		10:05	0-3	0-1	0-0	1	1	2	1	0	0	0	0	0	0	0	0	0	0	0	-3		
24	Shareef O'Neal		02:55	0-0	0-0	0-0	0	0	0	2	0	0	0	0	1	0	0	0	0	0	0	-10		
Team							0	0	0			0			0									
Totals				24-65	6-19	14-17	16	18	34	22	16	68	15	9	8	3	3						-9	

Shooting By Period		
1st FG%	10-35	28.6%
3PT%	3-9	33.3%
FT%	6-7	85.7%
2nd FG%	14-30	46.7%
3PT%	3-10	30.0%
FT%	8-10	80%
GM FG%	24-65	36.9%
3PT%	6-19	31.6%
FT%	14-17	82.4%

Dead Ball Rebounds: 1, 0

Technical Fouls::NONE

TCU - 77

Record: 14-4

NO.	Name	F	Min	FG			3P			FT			Rebounds			Fouls		TP	AS	TO	ST	Blocks		+/-
				M-A	M-A	M-A	OR	DR	TOT	PF	FD	OR	DR	TOT	BS	BA								
2	Emanuel Miller	F	24:10	3-7	0-1	1-2	2	3	5	4	2	7	1	0	0	0	1	0	0	0	1	0	-5	
5	Charles O'Bannon	F	26:26	6-9	3-4	4-4	2	4	6	1	3	19	0	1	2	0	0	3	1	2	0	0	3	
4	Eddie Lampkin	C	19:51	1-2	0-0	1-2	1	2	3	3	2	3	1	2	0	1	0	0	1	0	0	0		
1	Mike Miles	G	36:28	6-14	0-3	7-9	2	6	8	1	5	19	6	1	0	1	2	14	6	1	0	1	14	
10	Damion Baugh	G	35:58	6-12	0-4	2-4	0	4	4	0	6	14	4	4	1	0	0	0	4	4	1	0	0	
0	Micah Peavy		20:53	3-5	0-1	1-2	1	2	3	4	1	7	0	1	0	0	0	21	0	1	0	0	21	
25	Souleymane Doumbia		04:49	0-0	0-0	0-2	1	0	1	1	1	0	0	0	0	0	0	10	0	0	0	0	10	
3	Francisco Farabello		13:43	2-4	2-4	0-0	0	1	1	0	1	6	2	2	0	0	0	-2	2	2	0	0	-2	
21	JaKobe Coles		04:41	0-1	0-1	2-2	0	2	2	1	1	2	0	0	0	0	0	8	0	0	0	0	8	
12	Xavier Cork		13:01	0-1	0-0	0-0	1	1	2	1	0	0	0	1	0	0	0	-4	0	1	0	1	-4	
Team							3	2	5			0			1									
Totals				27-55	5-18	18-27	13	27	40	16	22	77	14	13	3	3	3	9						

Shooting By Period		
1st FG%	15-29	51.7%
3PT%	1-10	10.0%
FT%	7-12	58.3%
2nd FG%	12-26	46.2%
3PT%	4-8	50.0%
FT%	11-15	73.3%
GM FG%	27-55	49.1%
3PT%	5-18	27.8%
FT%	18-27	66.7%

Dead Ball Rebounds: 6, 0

Technical Fouls::NONE

	LSU	TCU
Biggest lead	2 (1 st 19:35)	16 (2 nd 15:59)
Best Scoring Run	10 (2 nd 12:41)	8 (2 nd 19:20)
Lead Changes	9	
Times Tied	5	
Time with Lead	03:52	32:57

Points from	LSU	TCU
Turnovers	20	12
Paint	32	32
Second Chance	21	14
Fast Breaks	6	4
Bench	8	15

	Period by Period Scoring		
	1st	2nd	TOT
LSU	29	39	68
TCU	38	39	77



Period 1

Quarter Starters:

TCU	1 Miles M	2 Miller E	4 Lampkin E	5 O'Bannon C	10 Baugh D
LSU	0 Murray B	2 Gaines E	4 Days D	13 Eason T	15 Reid E

Game Time	TCU	Score	Diff	LSU
20:00	4 LAMPKIN E jumpball lost			15 REID E jumpball won
19:57				0 MURRAY B 2pt FG in the paint, driving layup missed
19:54	4 LAMPKIN E defensive rebound (1)			
19:53	4 LAMPKIN E turnover bad pass (1)			13 EASON T steal (1)
19:35		0-2	-2	4 DAYS D 2pt FG from turnover in the paint, jump shot made (2)
19:35				13 EASON T assist (1)
19:23	10 BAUGH D turnover lost ball (1)			2 GAINES E steal (1)
19:19				0 MURRAY B 2pt FG from turnover in the paint, driving layup missed
19:12	1 MILES M defensive rebound (1)			
19:12	jump ball situation			
19:02	5 O'BANNON C 3pt FG , jump shot missed			
18:59	offensive rebound (3)			
18:56	2 MILLER E 2pt FG second chance outside the paint, jump shot made (2)	2-2	0	
18:56	4 LAMPKIN E assist (1)			
18:43				4 DAYS D 3pt FG , jump shot missed
18:37	1 MILES M defensive rebound (2)			
18:33	2 MILLER E 2pt FG fast break outside the paint, jump shot made (4)	4-2	2	
18:33	10 BAUGH D assist (1)			
18:05				0 MURRAY B 2pt FG in the paint, layup blocked
18:05	4 LAMPKIN E block (1)			
18:02	10 BAUGH D defensive rebound (1)			
17:59	10 BAUGH D turnover lost ball (2)			13 EASON T steal (2)
17:55		4-4	0	13 EASON T 2pt FG fast break from turnover in the paint, dunk, made (2)
17:55				0 MURRAY B assist (1)
17:55	2 MILLER E foul shooting (1 - 1)			13 EASON T foul drawn (1)
17:55				13 EASON T free throw fast break 1 - 1 missed
17:55	2 MILLER E defensive rebound (1)			
17:34	10 BAUGH D 2pt FG in the paint, driving layup made (2)	6-4	2	
17:34	1 MILES M assist (1)			
17:25		6-6	0	15 REID E 2pt FG in the paint, layup made (2)
17:25				2 GAINES E assist (1)
17:10	10 BAUGH D turnover bad pass (3)			15 REID E steal (1)
16:50		6-8	-2	13 EASON T 2pt FG from turnover outside the paint, jump shot made (4)
16:30	1 MILES M 3pt FG , jump shot missed			
16:26	offensive rebound (7)			
16:23	4 LAMPKIN E substitution out			
16:23	5 O'BANNON C substitution out			
16:23	0 PEAVY M substitution in			
16:23	25 DOUMBIA S substitution in			



LSU at TCU

01/29/22 Ed and Rae Schollmaier Arena, Fort Worth
2021-22 Men's Basketball

Game Time: 11:00 AM
Game Duration: 2:06
Attendance: 6,539

Officials: Gary Maxwell, Darron George, Bret Smith

Game Time	TCU	Score	Diff	LSU
16:12	1 MILES M 2pt FG second chance outside the paint, step back jump shot made (2)	8-8	0	
15:47				15 REID E 2pt FG outside the paint, jump shot missed
15:43	0 PEAVY M defensive rebound (1)			
15:39	1 MILES M 2pt FG fast break in the paint, pull up jump shot made (4)	10-8	2	
15:20				4 DAYS D 2pt FG outside the paint, hook shot missed
15:16	2 MILLER E defensive rebound (2)			
15:12	0 PEAVY M 3pt FG , jump shot missed			
15:09	25 DOUMBIA S offensive rebound (1)			
15:08	25 DOUMBIA S foul drawn (1)			4 DAYS D foul shooting (1 - 1)
15:08	Timeout media			
15:08	10 BAUGH D substitution out			
15:08	3 FARABELLO F substitution in			
15:08				0 MURRAY B substitution out
15:08				2 GAINES E substitution out
15:08				13 EASON T substitution out
15:08				1 PINSON X substitution in
15:08				3 FUDGE A substitution in
15:08				5 WILKINSON M substitution in
15:08	25 DOUMBIA S free throw 1 - 2 missed			
15:08	offensive dead ball rebound (1)			
15:08	25 DOUMBIA S free throw 2 - 2 missed			
15:07				4 DAYS D defensive rebound (1)
14:39				15 REID E 3pt FG , jump shot missed
14:35				5 WILKINSON M offensive rebound (1)
14:33				1 PINSON X 3pt FG second chance, jump shot missed
14:29	3 FARABELLO F defensive rebound (1)			
14:21	1 MILES M foul drawn (1)			5 WILKINSON M foul shooting (1 - 2)
14:21	1 MILES M free throw 1 - 3 missed			
14:21	offensive dead ball rebound (2)			
14:21	1 MILES M free throw 2 - 3 missed			
14:21	offensive dead ball rebound (3)			
14:21	2 MILLER E substitution out			
14:21	25 DOUMBIA S substitution out			
14:21	4 LAMPKIN E substitution in			
14:21	21 COLES J substitution in			
14:21	1 MILES M free throw 3 - 3 made (5)	11-8	3	
14:08				1 PINSON X 2pt FG outside the paint, jump shot missed
14:07	defensive rebound (12)			
14:06	1 MILES M substitution out			
14:06	10 BAUGH D substitution in			
14:06				4 DAYS D substitution out
14:06				15 REID E substitution out
14:06				11 WILLIAMS J substitution in
14:06				13 EASON T substitution in
13:45	0 PEAVY M 2pt FG outside the paint, jump shot made (2)	13-8	5	
13:16	21 COLES J foul shooting (1 - 2)			1 PINSON X foul drawn (1)
13:16		13-9	4	1 PINSON X free throw 1 - 2 made (1)
13:16	21 COLES J substitution out			



LSU at TCU

01/29/22 Ed and Rae Schollmaier Arena, Fort Worth
2021-22 Men's Basketball

Game Time: 11:00 AM
Game Duration: 2:06
Attendance: 6,539

Officials: Gary Maxwell, Darron George, Bret Smith

Game Time	TCU	Score	Diff	LSU
13:16	2 MILLER E substitution in			
13:16				3 FUDGE A substitution out
13:16				5 WILKINSON M substitution out
13:16				0 MURRAY B substitution in
13:16				4 DAYS D substitution in
13:16		13-10	3	1 PINSON X free throw 2 - 2 made (2)
13:16				1 PINSON X substitution out
13:16				2 GAINES E substitution in
13:00	4 LAMPKIN E foul drawn (1)			11 WILLIAMS J foul personal (1 - 3)
12:59	2 MILLER E 2pt FG outside the paint, jump shot blocked			
12:59				4 DAYS D block (1)
12:55				11 WILLIAMS J defensive rebound (1)
12:53				0 MURRAY B 2pt FG outside the paint, jump shot missed
12:47	2 MILLER E defensive rebound (3)			
12:27	0 PEAVY M turnover lost ball (1)			4 DAYS D steal (1)
12:26	0 PEAVY M foul personal (1 - 3)			4 DAYS D foul drawn (1)
12:26	0 PEAVY M substitution out			
12:26	5 O'BANNON C substitution in			
12:04	5 O'BANNON C steal (1)			2 GAINES E turnover lost ball (1)
11:57	5 O'BANNON C 2pt FG from turnover in the paint, jump shot missed			
11:54				4 DAYS D defensive rebound (2)
11:47		13-12	1	13 EASON T 2pt FG in the paint, layup made (6)
11:47				2 GAINES E assist (2)
11:37	10 BAUGH D foul drawn (1)			13 EASON T foul personal (1 - 4)
11:37	Timeout media			
11:37	3 FARABELLO F substitution out			
11:37	1 MILES M substitution in			
11:37				11 WILLIAMS J substitution out
11:37				13 EASON T substitution out
11:37				5 WILKINSON M substitution in
11:37				15 REID E substitution in
11:17	10 BAUGH D 3pt FG , jump shot missed			
11:13				4 DAYS D defensive rebound (3)
11:02				Timeout 30 Sec
10:55				2 GAINES E 2pt FG in the paint, jump shot missed
10:53	5 O'BANNON C defensive rebound (1)			
10:53	5 O'BANNON C foul drawn (1)			2 GAINES E foul personal (1 - 5)
10:53				2 GAINES E substitution out
10:53				1 PINSON X substitution in
10:34	10 BAUGH D 2pt FG in the paint, driving layup made (4)	15-12	3	
10:10				0 MURRAY B 2pt FG outside the paint, jump shot missed
10:07				4 DAYS D offensive rebound (4)
10:06		15-14	1	4 DAYS D 2pt FG second chance in the paint, layup made (4)
09:50	10 BAUGH D 2pt FG in the paint, jump shot missed			
09:45	5 O'BANNON C offensive rebound (2)			
09:45	5 O'BANNON C 2pt FG second chance in the paint, layup missed			
09:43				15 REID E defensive rebound (1)
09:38		15-17	-2	5 WILKINSON M 3pt FG , jump shot made (3)



LSU at TCU

01/29/22 Ed and Rae Schollmaier Arena, Fort Worth
2021-22 Men's Basketball

Game Time: 11:00 AM
Game Duration: 2:06
Attendance: 6,539

Officials: Gary Maxwell, Darron George, Bret Smith

Game Time	TCU	Score	Diff	LSU
09:38				0 MURRAY B assist (2)
09:21	1 MILES M 3pt FG , jump shot missed			
09:17				5 WILKINSON M defensive rebound (2)
09:14				15 REID E 2pt FG in the paint, layup blocked
09:14	1 MILES M block (1)			
09:14	defensive rebound (16)			
09:12	4 LAMPKIN E substitution out			
09:12	5 O'BANNON C substitution out			
09:12	0 PEAVY M substitution in			
09:12	12 CORK X substitution in			
09:12				0 MURRAY B substitution out
09:12				4 DAYS D substitution out
09:12				15 REID E substitution out
09:12				11 WILLIAMS J substitution in
09:12				13 EASON T substitution in
09:12				24 O'NEAL S substitution in
08:47	10 BAUGH D 2pt FG in the paint, driving layup made (6)	17-17	0	
08:21				5 WILKINSON M 2pt FG in the paint, driving layup missed
08:18				11 WILLIAMS J offensive rebound (2)
08:04	10 BAUGH D foul drawn (2)			13 EASON T foul offensive (2 - 6)
08:04				13 EASON T turnover offensive (1)
08:04				13 EASON T substitution out
08:04				4 DAYS D substitution in
07:53	1 MILES M foul drawn (2)			24 O'NEAL S foul shooting (1 - 7)
07:53	Timeout media			
07:53				1 PINSON X substitution out
07:53				24 O'NEAL S substitution out
07:53				2 GAINES E substitution in
07:53				15 REID E substitution in
07:53	1 MILES M free throw 1 - 2 made (6)	18-17	1	
07:53	1 MILES M free throw 2 - 2 made (7)	19-17	2	
07:41				4 DAYS D 2pt FG outside the paint, jump shot missed
07:38				4 DAYS D offensive rebound (5)
07:34		19-20	-1	2 GAINES E 3pt FG second chance, jump shot made (3)
07:34				5 WILKINSON M assist (1)
07:02	10 BAUGH D 3pt FG , jump shot missed			
06:58				2 GAINES E defensive rebound (1)
06:50				4 DAYS D 2pt FG outside the paint, jump shot missed
06:47	12 CORK X defensive rebound (1)			
06:23	1 MILES M 2pt FG outside the paint, jump shot made (9)	21-20	1	
06:11				15 REID E 2pt FG in the paint, hook shot missed
06:08	10 BAUGH D defensive rebound (2)			
06:01	2 MILLER E 3pt FG , jump shot missed			
05:57	12 CORK X offensive rebound (2)			
05:57	12 CORK X 2pt FG second chance in the paint, layup missed			
05:53	0 PEAVY M offensive rebound (2)			
05:53	0 PEAVY M 2pt FG second chance in the paint, layup made (4)	23-20	3	
05:38				11 WILLIAMS J 2pt FG in the paint, jump shot missed
05:35				2 GAINES E offensive rebound (2)



Official Basketball Play by Play - First Half
LSU at TCU
 01/29/22 Ed and Rae Schollmaier Arena, Fort Worth
 2021-22 Men's Basketball

Game Time: 11:00 AM
Game Duration: 2:06
Attendance: 6,539

Officials: Gary Maxwell, Darron George, Bret Smith

Game Time	TCU	Score	Diff	LSU
05:34				2 GAINES E 3pt FG second chance, jump shot missed
05:31				4 DAYS D offensive rebound (6)
05:28	2 MILLER E foul shooting (2 - 4)			4 DAYS D foul drawn (2)
05:28		23-21	2	4 DAYS D free throw 1 - 2 made (5)
05:28	2 MILLER E substitution out			
05:28	12 CORK X substitution out			
05:28	4 LAMPKIN E substitution in			
05:28	21 COLES J substitution in			
05:28				5 WILKINSON M substitution out
05:28				11 WILLIAMS J substitution out
05:28				0 MURRAY B substitution in
05:28				3 FUDGE A substitution in
05:28	10 BAUGH D substitution out			
05:28	3 FARABELLO F substitution in			
05:28		23-22	1	4 DAYS D free throw 2 - 2 made (6)
05:28				4 DAYS D substitution out
05:28				13 EASON T substitution in
05:18	turnover 10 sec back court (6)			
05:14		23-24	-1	0 MURRAY B 2pt FG from turnover outside the paint, jump shot made (2)
05:14				2 GAINES E assist (3)
05:00	Timeout 30 Sec			
05:00				15 REID E substitution out
05:00				24 O'NEAL S substitution in
04:41	3 FARABELLO F 3pt FG , jump shot made (3)	26-24	2	
04:41	1 MILES M assist (2)			
04:30	3 FARABELLO F foul drawn (1)			24 O'NEAL S foul offensive (2 - 8)
04:30				24 O'NEAL S turnover offensive (1)
04:30				24 O'NEAL S substitution out
04:30				15 REID E substitution in
04:20	0 PEAVY M 2pt FG from turnover in the paint, driving layup made (6)	28-24	4	
04:03	jump ball situation			
04:03				3 FUDGE A substitution out
04:03				5 WILKINSON M substitution in
04:02				0 MURRAY B 3pt FG , jump shot missed
03:59	1 MILES M defensive rebound (3)			
03:55	1 MILES M 2pt FG in the paint, jump shot made (11)	30-24	6	
03:24				2 GAINES E 2pt FG in the paint, driving layup missed
03:24				15 REID E offensive rebound (2)
03:22	4 LAMPKIN E foul shooting (1 - 5)			15 REID E foul drawn (1)
03:22				Timeout media
03:22	21 COLES J substitution out			
03:22	10 BAUGH D substitution in			
03:22				13 EASON T substitution out
03:22				4 DAYS D substitution in
03:22		30-25	5	15 REID E free throw 1 - 2 made (3)
03:22		30-26	4	15 REID E free throw 2 - 2 made (4)
02:57	0 PEAVY M foul drawn (1)			2 GAINES E foul personal (2 - 9)
02:57				2 GAINES E substitution out



Official Basketball Play by Play - First Half
LSU at TCU
 01/29/22 Ed and Rae Schollmaier Arena, Fort Worth
 2021-22 Men's Basketball

Game Time: 11:00 AM
Game Duration: 2:06
Attendance: 6,539

Officials: Gary Maxwell, Darron George, Bret Smith

Game Time	TCU	Score	Diff	LSU
02:57				1 PINSON X substitution in
02:57	0 PEAVY M 1&1 free throw 1 made (7)	31-26	5	
02:57	3 FARABELLO F substitution out			
02:57	5 O'BANNON C substitution in			
02:57	0 PEAVY M 1&1 free throw 2 missed			
02:56				15 REID E defensive rebound (3)
02:51				0 MURRAY B turnover bad pass (1)
02:26	4 LAMPKIN E turnover travel (2)			
02:18		31-29	2	5 WILKINSON M 3pt FG from turnover, jump shot made (6)
02:18				0 MURRAY B assist (3)
02:05	5 O'BANNON C 2pt FG in the paint, layup made (2)	33-29	4	
02:05	10 BAUGH D assist (2)			
02:05	5 O'BANNON C foul drawn (2)			15 REID E foul shooting (1 - 10)
02:05				1 PINSON X substitution out
02:05				11 WILLIAMS J substitution in
02:05	5 O'BANNON C free throw 1 - 1 made (3)	34-29	5	
01:51				0 MURRAY B 2pt FG in the paint, jump shot missed
01:49	0 PEAVY M defensive rebound (3)			
01:45	10 BAUGH D 3pt FG , jump shot missed			
01:42	4 LAMPKIN E offensive rebound (2)			
01:40	4 LAMPKIN E 2pt FG second chance in the paint, layup made (2)	36-29	7	
01:30	0 PEAVY M foul personal (2 - 6)			4 DAYS D foul drawn (3)
01:30	0 PEAVY M substitution out			
01:30	4 LAMPKIN E substitution out			
01:30	12 CORK X substitution in			
01:30	21 COLES J substitution in			
01:21				11 WILLIAMS J 2pt FG in the paint, jump shot missed
01:20	21 COLES J defensive rebound (1)			
01:19	21 COLES J foul drawn (1)			15 REID E foul personal (2 - 11)
01:19	21 COLES J free throw 1 - 2 made (1)	37-29	8	
01:19				11 WILLIAMS J substitution out
01:19				15 REID E substitution out
01:19				1 PINSON X substitution in
01:19				13 EASON T substitution in
01:19	21 COLES J free throw 2 - 2 made (2)	38-29	9	
00:52				1 PINSON X 3pt FG , jump shot missed
00:48	21 COLES J defensive rebound (2)			
00:38	21 COLES J 3pt FG , jump shot missed			
00:34				0 MURRAY B defensive rebound (1)
00:08				4 DAYS D 2pt FG outside the paint, jump shot missed
00:04	1 MILES M defensive rebound (4)			
END OF PERIOD				
TCU 38-29 LSU				



LSU at TCU

01/29/22 Ed and Rae Schollmaier Arena, Fort Worth
2021-22 Men's Basketball

Game Time: 11:00 AM
Game Duration: 2:06
Attendance: 6,539

Officials: Gary Maxwell, Darron George, Bret Smith

LSU - 29

NO.	Name	F	Min	FG			Rebounds			Fouls		TP	AS	TO	ST	Blocks		+/-
				M-A	M-A	M-A	OR	DR	TOT	PF	FD					BS	BA	
4	Darius Days	F	15:56	2-7	0-1	2-2	3	3	6	1	3	6	0	0	1	1	0	-1
13	Tari Eason	F	11:54	3-3	0-0	0-1	0	0	0	2	1	6	1	1	2	0	0	-8
15	Efton Reid	C	14:23	1-5	0-1	2-2	1	2	3	2	1	4	0	0	1	0	1	-5
0	Brandon Murray	G	14:24	1-8	0-1	0-0	0	1	1	0	0	2	3	1	0	0	1	-3
2	Eric Gaines	G	12:11	1-4	1-2	0-0	1	1	2	2	0	3	3	1	1	0	0	-4
1	Xavier Pinson		07:03	0-3	0-2	2-2	0	0	0	0	1	2	0	0	0	0	0	-1
3	Alex Fudge		03:17	0-0	0-0	0-0	0	0	0	0	0	0	0	0	0	0	0	-4
5	Mwani Wilkinson		12:04	2-3	2-2	0-0	1	1	2	1	0	6	1	0	0	0	0	-8
11	Justice Williams		06:59	0-2	0-0	0-0	1	1	2	1	0	0	0	0	0	0	0	-6
24	Shareef O'Neal		01:49	0-0	0-0	0-0	0	0	0	2	0	0	0	1	0	0	0	-5
Team							0	0	0			0		0				
Totals				10-35	3-9	6-7	7	9	16	11	6	29	8	4	5	1	2	-9

Shooting By Period		
1st FG%	10-35	28.6%
3PT%	3-9	33.3%
FT%	6-7	85.7%
GM FG%	10-35	28.6%
3PT%	3-9	33.3%
FT%	6-7	85.7%

Dead Ball Rebounds: 0, 0

Technical Fouls::NONE

TCU - 38

NO.	Name	F	Min	FG			Rebounds			Fouls		TP	AS	TO	ST	Blocks		+/-
				M-A	M-A	M-A	OR	DR	TOT	PF	FD					BS	BA	
2	Emanuel Miller	F	13:27	2-4	0-1	0-0	0	3	3	2	0	4	0	0	0	0	1	0
5	Charles O'Bannon	F	09:48	1-4	0-1	1-1	1	1	2	0	2	3	0	0	1	0	0	-3
4	Eddie Lampkin	C	12:44	1-1	0-0	0-0	1	1	2	1	1	2	1	2	0	1	0	-1
1	Mike Miles	G	17:31	4-6	0-2	3-5	0	4	4	0	2	11	2	0	0	1	0	11
10	Damion Baugh	G	16:52	3-7	0-3	0-0	0	2	2	0	2	6	2	3	0	0	0	4
0	Micah Peavy		11:39	3-4	0-1	1-2	1	2	3	2	1	7	0	1	0	0	0	14
25	Souleymane Doumbia		02:02	0-0	0-0	0-2	1	0	1	0	1	0	0	0	0	0	0	4
3	Francisco Farabello		06:02	1-1	1-1	0-0	0	1	1	0	1	3	0	0	0	0	0	2
21	JaKobe Coles		04:41	0-1	0-1	2-2	0	2	2	1	1	2	0	0	0	0	0	8
12	Xavier Cork		05:14	0-1	0-0	0-0	1	1	2	0	0	0	0	0	0	0	0	6
Team							2	2	4			0		1				
Totals				15-29	1-10	7-12	7	19	26	6	11	38	5	7	1	2	1	9

Shooting By Period		
1st FG%	15-29	51.7%
3PT%	1-10	10.0%
FT%	7-12	58.3%
GM FG%	15-29	51.7%
3PT%	1-10	10.0%
FT%	7-12	58.3%

Dead Ball Rebounds: 3, 0

Technical Fouls::NONE

	LSU	TCU
Biggest lead	2 (1st 19:35)	9 (1st 1:19)
Best Scoring Run	5 (1st 9:38)	7 (1st 13:45)
Lead Changes	9	
Times Tied	5	
Time with Lead	03:52	12:57

Points from	LSU	TCU
Turnovers	11	4
Paint	10	18
Second Chance	9	8
Fast Breaks	2	4
Bench	8	12

	Period by Period Scoring		
	1st	2nd	TOT
LSU	29	39	68
TCU	38	39	77



Period 2

Quarter Starters:

TCU	1 Miles M	2 Miller E	4 Lampkin E	5 O'Bannon C	10 Baugh D
LSU	0 Murray B	2 Gaines E	4 Days D	13 Eason T	15 Reid E

Game Time	TCU	Score	Diff	LSU
20:00	12 CORK X substitution out			
20:00	21 COLES J substitution out			
20:00	2 MILLER E substitution in			
20:00	4 LAMPKIN E substitution in			
20:00				1 PINSON X substitution out
20:00				5 WILKINSON M substitution out
20:00				2 GAINES E substitution in
20:00				15 REID E substitution in
19:46	10 BAUGH D 3pt FG , jump shot missed			
19:41				15 REID E defensive rebound (4)
19:23	10 BAUGH D steal (1)			15 REID E turnover bad pass (1)
19:20	10 BAUGH D foul drawn (3)			13 EASON T foul flagrant 1 (3 - 1)
19:20	10 BAUGH D free throw 1 - 2 missed			
19:20	offensive dead ball rebound (4)			
19:20				13 EASON T substitution out
19:20				3 FUDGE A substitution in
19:20	10 BAUGH D free throw 2 - 2 made (7)	39-29	10	
19:07	1 MILES M 2pt FG outside the paint, step back jump shot missed			
19:05				3 FUDGE A defensive rebound (1)
19:04	4 LAMPKIN E foul personal (2 - 1)			3 FUDGE A foul drawn (1)
18:48				4 DAYS D 2pt FG in the paint, layup missed
18:44				4 DAYS D offensive rebound (7)
18:44				4 DAYS D 2pt FG second chance in the paint, layup missed
18:43				15 REID E offensive rebound (5)
18:43	jump ball situation			
18:43	4 LAMPKIN E foul personal (3 - 2)			15 REID E foul drawn (2)
18:43	4 LAMPKIN E substitution out			
18:43	25 DOUMBIA S substitution in			
18:41		39-31	8	15 REID E 2pt FG second chance in the paint, jump shot made (6)
18:41				0 MURRAY B assist (4)
18:24	5 O'BANNON C 2pt FG outside the paint, jump shot made (5)	41-31	10	
18:24	2 MILLER E assist (1)			
18:04				2 GAINES E 2pt FG in the paint, driving layup missed
18:01	1 MILES M defensive rebound (5)			
17:58	2 MILLER E 2pt FG fast break in the paint, driving layup missed			
17:56	offensive rebound (28)			
17:45	2 MILLER E 2pt FG second chance outside the paint, jump shot missed			
17:42				4 DAYS D defensive rebound (8)
17:28	25 DOUMBIA S foul personal (1 - 3)			15 REID E foul drawn (3)
17:23	2 MILLER E foul shooting (3 - 4)			4 DAYS D foul drawn (4)
17:23				4 DAYS D free throw 1 - 2 missed
17:23				offensive dead ball rebound (1)



Game Time	TCU	Score	Diff	LSU
17:23	2 MILLER E substitution out			
17:23	0 PEAVY M substitution in			
17:23		41-32	9	4 DAYS D free throw 2 - 2 made (7)
17:15	5 O'BANNON C 3pt FG , jump shot made (8)	44-32	12	
17:15	10 BAUGH D assist (3)			
16:54				15 REID E 3pt FG , jump shot missed
16:51				4 DAYS D offensive rebound (9)
16:51	1 MILES M foul personal (1 - 5)			4 DAYS D foul drawn (5)
16:46		44-34	10	0 MURRAY B 2pt FG second chance in the paint, jump shot made (4)
16:46				2 GAINES E assist (4)
16:34	5 O'BANNON C 3pt FG , jump shot made (11)	47-34	13	
16:34	1 MILES M assist (3)			
16:14	5 O'BANNON C steal (2)			3 FUDGE A turnover lost ball (1)
16:14	10 BAUGH D foul drawn (4)			4 DAYS D foul personal (2 - 2)
16:14				3 FUDGE A substitution out
16:14				5 WILKINSON M substitution in
15:59	5 O'BANNON C 3pt FG from turnover, jump shot made (14)	50-34	16	
15:59	10 BAUGH D assist (4)			
15:56				Timeout 30 Sec
15:56	Timeout media			
15:56	25 DOUMBIA S substitution out			
15:56	12 CORK X substitution in			
15:56				15 REID E substitution out
15:56				13 EASON T substitution in
15:43				13 EASON T 2pt FG in the paint, layup missed
15:39				13 EASON T offensive rebound (1)
15:39		50-36	14	13 EASON T 2pt FG second chance in the paint, layup made (8)
15:25	5 O'BANNON C foul offensive (1 - 6)			2 GAINES E foul drawn (1)
15:25	5 O'BANNON C turnover offensive (1)			
15:25	Timeout media			
15:00				13 EASON T 2pt FG from turnover in the paint, layup missed
15:00				13 EASON T offensive rebound (2)
14:59	12 CORK X foul shooting (1 - 7)			13 EASON T foul drawn (2)
14:59		50-37	13	13 EASON T free throw 1 - 2 made (9)
14:59		50-38	12	13 EASON T free throw 2 - 2 made (10)
14:32	0 PEAVY M 2pt FG in the paint, jump shot missed			
14:30				4 DAYS D defensive rebound (10)
14:21		50-40	10	13 EASON T 2pt FG in the paint, driving layup made (12)
13:49	1 MILES M 2pt FG outside the paint, pull up jump shot missed			
13:46				0 MURRAY B defensive rebound (2)
13:20		50-42	8	2 GAINES E 2pt FG in the paint, driving layup made (5)
12:49	1 MILES M 2pt FG outside the paint, jump shot blocked			
12:49				0 MURRAY B block (1)
12:45				5 WILKINSON M defensive rebound (3)
12:41	0 PEAVY M foul personal (3 - 8)			2 GAINES E foul drawn (2)
12:41	0 PEAVY M substitution out			
12:41	5 O'BANNON C substitution out			
12:41	12 CORK X substitution out			



LSU at TCU

01/29/22 Ed and Rae Schollmaier Arena, Fort Worth
2021-22 Men's Basketball

Game Time: 11:00 AM
Game Duration: 2:06
Attendance: 6,539

Officials: Gary Maxwell, Darron George, Bret Smith

Game Time	TCU	Score	Diff	LSU
12:41	2 MILLER E substitution in			
12:41	3 FARABELLO F substitution in			
12:41	4 LAMPKIN E substitution in			
12:41		50-43	7	2 GAINES E 1&1 free throw 1 made (6)
12:41				4 DAYS D substitution out
12:41				15 REID E substitution in
12:41		50-44	6	2 GAINES E 1&1 free throw 2 made (7)
12:23	10 BAUGH D 2pt FG in the paint, dunk, made (9)	52-44	8	
12:23	3 FARABELLO F assist (1)			
12:15		52-47	5	0 MURRAY B 3pt FG , jump shot made (7)
12:15				2 GAINES E assist (5)
12:02	3 FARABELLO F 3pt FG , jump shot missed			
12:00	2 MILLER E offensive rebound (4)			
11:58	2 MILLER E foul drawn (1)			5 WILKINSON M foul loose ball (2 - 3)
11:58	Timeout media			
11:58				13 EASON T substitution out
11:58				4 DAYS D substitution in
11:39	10 BAUGH D 2pt FG second chance outside the paint, jump shot missed			
11:36				5 WILKINSON M defensive rebound (4)
11:22		52-49	3	4 DAYS D 2pt FG in the paint, layup made (9)
11:03	3 FARABELLO F 3pt FG , jump shot made (6)	55-49	6	
11:03	1 MILES M assist (4)			
10:59	Timeout 30 Sec			
10:47		55-51	4	2 GAINES E 2pt FG in the paint, jump shot made (9)
10:47				15 REID E assist (1)
10:19	1 MILES M 3pt FG , jump shot missed			
10:14	2 MILLER E offensive rebound (5)			
10:06	4 LAMPKIN E 2pt FG second chance in the paint, hook shot missed			
10:02				4 DAYS D defensive rebound (11)
09:36		55-54	1	0 MURRAY B 3pt FG , jump shot made (10)
09:36				5 WILKINSON M assist (2)
09:19	4 LAMPKIN E foul drawn (2)			4 DAYS D foul shooting (3 - 4)
09:19	4 LAMPKIN E free throw 1 - 2 made (3)	56-54	2	
09:19	3 FARABELLO F substitution out			
09:19	5 O'BANNON C substitution in			
09:19				4 DAYS D substitution out
09:19				13 EASON T substitution in
09:19	4 LAMPKIN E free throw 2 - 2 missed			
09:18				13 EASON T defensive rebound (3)
09:04	1 MILES M foul drawn (3)			15 REID E foul offensive (3 - 5)
09:04				15 REID E turnover offensive (2)
09:04				5 WILKINSON M substitution out
09:04				4 DAYS D substitution in
09:03	2 MILLER E foul drawn (2)			4 DAYS D foul flagrant 1 (4 - 6)
09:03	2 MILLER E free throw 1 - 2 made (5)	57-54	3	
09:03	2 MILLER E free throw 2 - 2 missed			
09:03	offensive dead ball rebound (5)			
09:03				4 DAYS D substitution out



LSU at TCU

01/29/22 Ed and Rae Schollmaier Arena, Fort Worth
2021-22 Men's Basketball

Officials: Gary Maxwell, Darron George, Bret Smith

Game Time	TCU	Score	Diff	LSU
09:03				5 WILKINSON M substitution in
09:01	10 BAUGH D 2pt FG second chance in the paint, jump shot made (11)	59-54	5	
09:01	1 MILES M assist (5)			
08:44	10 BAUGH D foul drawn (5)			2 GAINES E foul offensive (3 - 7)
08:44				2 GAINES E turnover offensive (2)
08:20	1 MILES M turnover lost ball (1)			2 GAINES E steal (2)
08:14				13 EASON T 2pt FG from turnover in the paint, layup missed
08:12				15 REID E offensive rebound (6)
08:09				13 EASON T 3pt FG from turnover second chance, jump shot missed
08:05				15 REID E offensive rebound (7)
08:02		59-56	3	13 EASON T 2pt FG from turnover second chance in the paint, dunk, made (14)
08:02				2 GAINES E assist (6)
07:45	10 BAUGH D foul drawn (6)			15 REID E foul shooting (4 - 8)
07:45	Timeout media			
07:45	2 MILLER E substitution out			
07:45	0 PEAVY M substitution in			
07:45				24 O'NEAL S substitution in
07:45				15 REID E substitution out
07:45	10 BAUGH D free throw 1 - 2 missed			
07:45	offensive dead ball rebound (6)			
07:45	10 BAUGH D free throw 2 - 2 made (12)	60-56	4	
07:45	10 BAUGH D substitution out			
07:45	3 FARABELLO F substitution in			
07:34				13 EASON T 3pt FG , jump shot missed
07:28	4 LAMPKIN E defensive rebound (3)			
07:26	1 MILES M 2pt FG in the paint, driving layup missed			
07:22	5 O'BANNON C offensive rebound (3)			
07:22	5 O'BANNON C 2pt FG second chance in the paint, layup made (16)	62-56	6	
07:10				5 WILKINSON M turnover travel (1)
06:51	5 O'BANNON C foul drawn (3)			5 WILKINSON M foul shooting (3 - 9)
06:51	5 O'BANNON C free throw 1 - 3 made (17)	63-56	7	
06:51	5 O'BANNON C free throw 2 - 3 made (18)	64-56	8	
06:51	1 MILES M substitution out			
06:51	4 LAMPKIN E substitution out			
06:51	10 BAUGH D substitution in			
06:51	12 CORK X substitution in			
06:51				5 WILKINSON M substitution out
06:51				11 WILLIAMS J substitution in
06:51	5 O'BANNON C free throw 3 - 3 made (19)	65-56	9	
06:39	0 PEAVY M foul personal (4 - 9)			2 GAINES E foul drawn (3)
06:39	0 PEAVY M substitution out			
06:39	2 MILLER E substitution in			
06:39		65-57	8	2 GAINES E 1&1 free throw 1 made (10)
06:39				24 O'NEAL S substitution out
06:39				4 DAYS D substitution in
06:39				2 GAINES E 1&1 free throw 2 missed



LSU at TCU

Officials: Gary Maxwell, Darron George, Bret Smith

Game Time	TCU	Score	Diff	LSU
06:39				0 MURRAY B offensive rebound (3)
06:38				0 MURRAY B 2pt FG second chance in the paint, layup blocked
06:38	12 CORK X block (1)			
06:33	5 O'BANNON C defensive rebound (4)			
06:12	10 BAUGH D turnover bad pass (4)			13 EASON T steal (3)
05:50		65-60	5	4 DAYS D 3pt FG from turnover, jump shot made (12)
05:50				0 MURRAY B assist (5)
05:48				Timeout 30 Sec
05:48	2 MILLER E substitution out			
05:48	1 MILES M substitution in			
05:24	3 FARABELLO F turnover lost ball (1)			2 GAINES E steal (3)
05:20		65-62	3	2 GAINES E 2pt FG fast break from turnover in the paint, dunk, made (12)
05:06	1 MILES M 2pt FG in the paint, driving layup made (13)	67-62	5	
04:45				4 DAYS D 2pt FG outside the paint, jump shot missed
04:42	10 BAUGH D defensive rebound (3)			
04:38	3 FARABELLO F 3pt FG , jump shot missed			
04:33	1 MILES M offensive rebound (6)			
04:27	12 CORK X turnover offensive goal tending (1)			
04:27	3 FARABELLO F substitution out			
04:27	0 PEAVY M substitution in			
04:02				11 WILLIAMS J 3pt FG from turnover, jump shot missed
04:00	5 O'BANNON C defensive rebound (5)			
03:45	1 MILES M foul drawn (4)			2 GAINES E foul personal (4 - 10)
03:45	Timeout media			
03:45				11 WILLIAMS J substitution out
03:45				5 WILKINSON M substitution in
03:45	1 MILES M free throw 1 - 2 made (14)	68-62	6	
03:45	1 MILES M free throw 2 - 2 made (15)	69-62	7	
03:27		69-64	5	13 EASON T 2pt FG in the paint, pull up jump shot made (16)
03:05	1 MILES M 2pt FG in the paint, driving layup made (17)	71-64	7	
02:59				0 MURRAY B 3pt FG , jump shot missed
02:55				4 DAYS D offensive rebound (12)
02:54		71-66	5	4 DAYS D 2pt FG second chance in the paint, layup made (14)
02:22	1 MILES M 2pt FG in the paint, driving layup blocked			
02:22				0 MURRAY B block (2)
02:21	1 MILES M offensive rebound (7)			
02:19	1 MILES M foul drawn (5)			5 WILKINSON M foul shooting (4 - 11)
02:19	1 MILES M free throw 1 - 2 made (18)	72-66	6	
02:19	12 CORK X substitution out			
02:19	2 MILLER E substitution in			
02:19	1 MILES M free throw 2 - 2 made (19)	73-66	7	
01:57				4 DAYS D 3pt FG , jump shot missed
01:53	1 MILES M defensive rebound (8)			
01:30	10 BAUGH D 2pt FG in the paint, layup made (14)	75-66	9	
01:30	1 MILES M assist (6)			
01:24	2 MILLER E foul shooting (4 - 10)			2 GAINES E foul drawn (4)
01:24		75-67	8	2 GAINES E free throw 1 - 2 made (13)
01:24	0 PEAVY M substitution out			



Official Basketball Play by Play - Second Half

LSU at TCU

01/29/22 Ed and Rae Schollmaier Arena, Fort Worth
2021-22 Men's Basketball

Game Time: 11:00 AM

Game Duration: 2:06

Attendance: 6,539

Officials: Gary Maxwell, Darron George, Bret Smith

Game Time	TCU	Score	Diff	LSU
01:24	3 FARABELLO F substitution in			
01:24		75-68	7	2 GAINES E free throw 2 - 2 made (14)
00:58	2 MILLER E 2pt FG in the paint, dunk, made (7)	77-68	9	
00:58	3 FARABELLO F assist (2)			
00:52				2 GAINES E 3pt FG , jump shot missed
00:47	10 BAUGH D defensive rebound (4)			
00:22	3 FARABELLO F turnover out of bounds (2)			
00:22	3 FARABELLO F substitution out			
00:22	0 PEAVY M substitution in			
00:16				2 GAINES E 2pt FG from turnover in the paint, driving layup missed
00:13	5 O'BANNON C defensive rebound (6)			
END OF GAME				
TCU 77-68 LSU				



LSU at TCU

01/29/22 Ed and Rae Schollmaier Arena, Fort Worth
2021-22 Men's Basketball

Game Time: 11:00 AM
Game Duration: 2:06
Attendance: 6,539

Officials: Gary Maxwell, Darron George, Bret Smith

LSU - 39

NO.	Name	Min	FG			Rebounds			Fouls		TP	AS	TO	ST	Blocks		+/-
			M-A	M-A	M-A	OR	DR	TOT	PF	FD					BS	BA	
4	Darius Days	F 16:38	3-7	1-2	1-2	3	3	6	3	2	8	0	0	0	0	0	3
13	Tari Eason	F 13:57	4-9	0-2	2-2	2	1	3	1	1	10	0	0	1	0	0	4
15	Efton Reid	C 09:00	1-2	0-1	0-0	3	1	4	2	2	2	1	2	0	0	-3	
0	Brandon Murray	G 20:00	3-5	2-3	0-0	1	1	2	0	0	8	2	0	0	2	1	0
2	Eric Gaines	G 20:00	3-6	0-1	5-6	0	0	0	2	4	11	3	1	2	0	0	0
1	Xavier Pinson	00:00	0-0	0-0	0-0	0	0	0	0	0	0	0	0	0	0	0	0
3	Alex Fudge	03:06	0-0	0-0	0-0	0	1	1	0	1	0	0	1	0	0	-4	
5	Mwani Wilkinson	13:07	0-0	0-0	0-0	0	2	2	3	0	0	1	1	0	0	2	
24	Shareef O'Neal	01:06	0-0	0-0	0-0	0	0	0	0	0	0	0	0	0	0	-5	
11	Justice Williams	03:06	0-1	0-1	0-0	0	0	0	0	0	0	0	0	0	0	3	
Team						0	0	0			0						
Totals			14-30	3-10	8-10	9	9	18	11	10	39	7	5	3	2	1	0

Shooting By Period		
2 nd FG%	14-30	46.7%
3PT%	3-10	30.0%
FT%	8-10	80%
GM FG%	14-30	46.7%
3PT%	3-10	30.0%
FT%	8-10	80.0%

Dead Ball Rebounds: 1, 0

Technical Fouls::NONE

TCU - 39

NO.	Name	Min	FG			Rebounds			Fouls		TP	AS	TO	ST	Blocks		+/-
			M-A	M-A	M-A	OR	DR	TOT	PF	FD					BS	BA	
2	Emanuel Miller	F 10:43	1-3	0-0	1-2	2	0	2	2	2	3	1	0	0	0	0	-5
5	Charles O'Bannon	F 16:38	5-5	3-3	3-3	1	3	4	1	1	16	0	1	1	0	0	6
4	Eddie Lampkin	C 07:07	0-1	0-0	1-2	0	1	1	2	1	1	0	0	0	0	1	
1	Mike Miles	G 18:57	2-8	0-1	4-4	2	2	4	1	3	8	4	1	0	0	3	
10	Damion Baugh	G 19:06	3-5	0-1	2-4	0	2	2	0	4	8	2	1	1	0	-4	
21	JaKobe Coles	00:00	0-0	0-0	0-0	0	0	0	0	0	0	0	0	0	0	0	
25	Souleymane Doumbia	02:47	0-0	0-0	0-0	0	0	0	1	0	0	0	0	0	0	6	
0	Micah Peavy	09:14	0-1	0-0	0-0	0	0	0	2	0	0	0	0	0	0	7	
12	Xavier Cork	07:47	0-0	0-0	0-0	0	0	0	1	0	0	0	1	0	1	-10	
3	Francisco Farabello	07:41	1-3	1-3	0-0	0	0	0	0	0	3	2	2	0	0	-4	
Team						1	0	1			0		0				
Totals			12-26	4-8	11-15	6	8	14	10	11	39	9	6	2	1	2	0

Shooting By Period		
2 nd FG%	12-26	46.2%
3PT%	4-8	50.0%
FT%	11-15	73.3%
GM FG%	12-26	46.2%
3PT%	4-8	50.0%
FT%	11-15	73.3%

Dead Ball Rebounds: 3, 0

Technical Fouls::NONE

	LSU	TCU
Biggest lead	0 (1 st 20:00)	16 (2 nd 15:59)
Best Scoring Run	10(2 nd 12:41)	6(2 nd 15:59)
Lead Changes	0	
Times Tied	0	
Time with Lead	00:00	19:46

Points from	LSU	TCU
Turnovers	9	8
Paint	22	14
Second Chance	12	6
Fast Breaks	4	0
Bench	0	3

	Period by Period Scoring		
	1st	2nd	TOT
LSU	29	39	68
TCU	38	39	77



LSU at TCU

01/29/22 Ed and Rae Schollmaier Arena, Fort Worth
2021-22 Men's Basketball

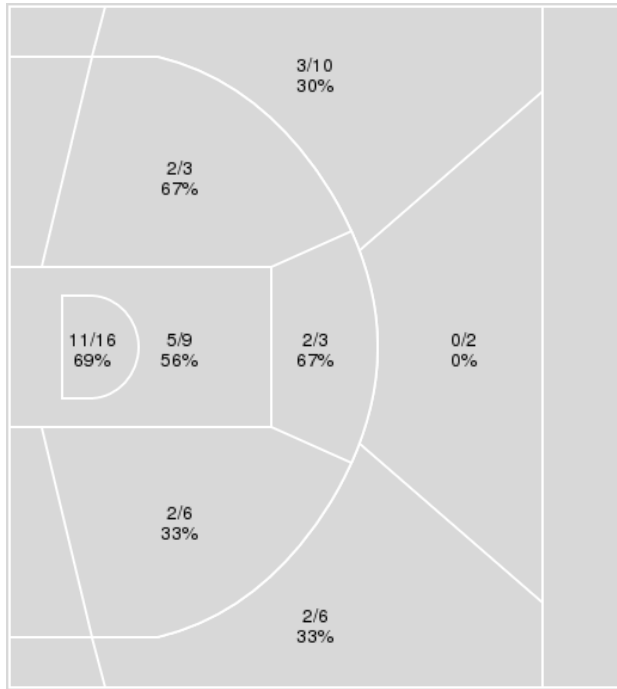
Game Time: 11:00 AM
Game Duration: 2:06
Attendance: 6,539

Officials: Gary Maxwell, Darron George, Bret Smith

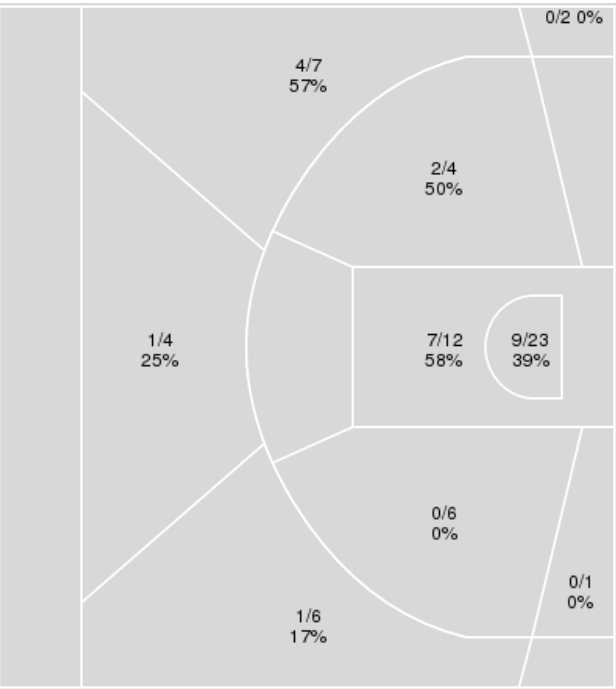
{ Players => 0, 1, 2, 3, 4, 5, 10, 11, 12, 13, 21, 25, 30, 33, 35; } FG
Types => All; Results => All;

{ Players => All; } FG Types => All; Results => All;

TCU



LSU



TCU	M/A	%
Field Goals	27/55	49
2 Points	22/37	59
3 Points	5/18	28
Free Throws	18/27	67

LSU	M/A	%
Field Goals	24/65	37
2 Points	18/46	39
3 Points	6/19	32
Free Throws	14/17	82



LSU at TCU

01/29/22 Ed and Rae Schollmaier Arena, Fort Worth
2021-22 Men's Basketball

Game Time: 11:00 AM
Game Duration: 2:06
Attendance: 6,539

Officials: Gary Maxwell, Darron George, Bret Smith

LSU

No	Name	Mins		Score		Points Diff		Points per Min		Assists		Rebounds		Steals		Turnovers	
		On	Off	On	Off	On	Off	On	Off	On	Off	On	Off	On	Off	On	Off
0	Brandon Murray	34:24	05:36	63 - 66	5 - 11	-3	-6	1.83	0.89	14	1	27	7	8	0	8	1
1	Xavier Pinson	07:03	32:57	10 - 11	58 - 66	-1	-8	1.42	1.76	2	13	8	26	0	8	2	7
2	Eric Gaines	32:11	07:49	58 - 62	10 - 15	-4	-5	1.80	1.28	13	2	26	8	8	0	7	2
3	Alex Fudge	06:23	33:37	9 - 17	59 - 60	-8	-1	1.41	1.76	3	12	7	27	0	8	2	7
4	Darius Days	32:34	07:26	58 - 56	10 - 21	2	-11	1.78	1.35	12	3	29	5	7	1	4	5
5	Mwani Wilkinson	25:11	14:49	43 - 49	25 - 28	-6	-3	1.71	1.69	7	8	25	9	1	7	5	4
11	Justice Williams	10:05	29:55	14 - 17	54 - 60	-3	-6	1.39	1.81	3	12	8	26	3	5	2	7
13	Tari Eason	25:51	14:09	41 - 45	27 - 32	-4	-5	1.59	1.91	8	7	16	18	8	0	7	2
15	Efton Reid	23:23	16:37	43 - 51	25 - 26	-8	-1	1.84	1.50	13	2	23	11	5	3	5	4
24	Shareef O'Neal	02:55	37:05	1 - 11	67 - 66	-10	1	0.34	1.81	0	15	1	33	0	8	3	6

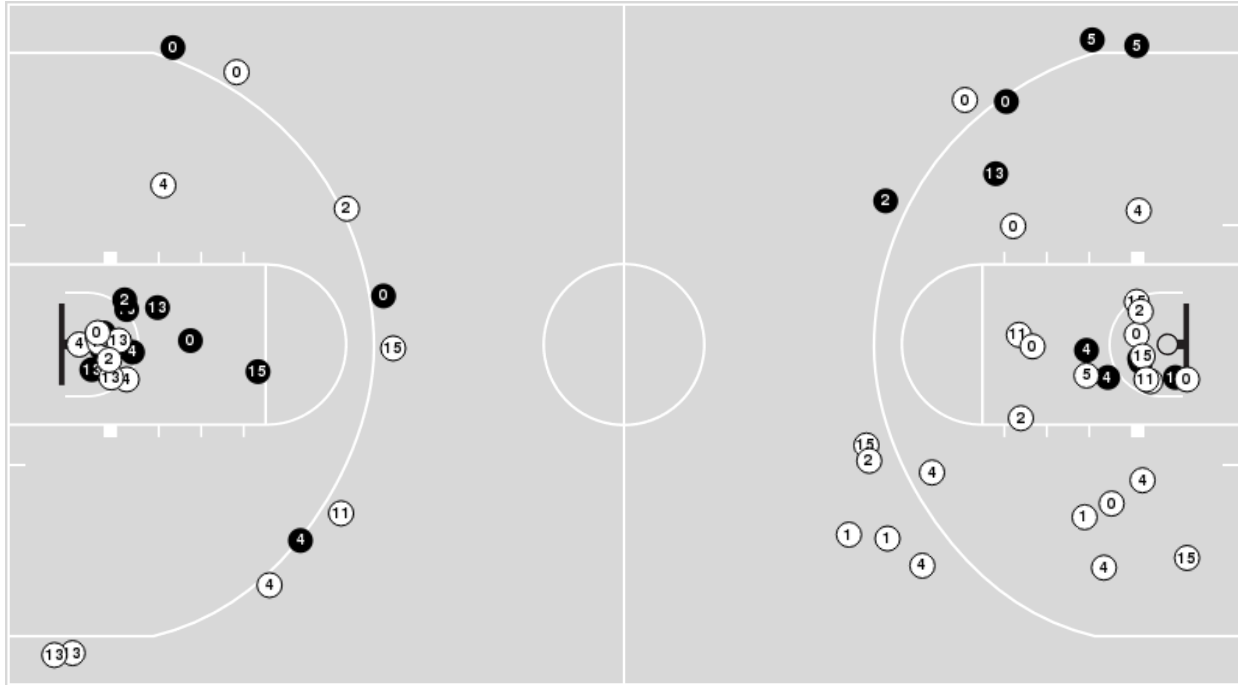
TCU

No	Name	Mins		Score		Points Diff		Points per Min		Assists		Rebounds		Steals		Turnovers	
		On	Off	On	Off	On	Off	On	Off	On	Off	On	Off	On	Off	On	Off
0	Micah Peavy	20:53	19:07	51 - 30	26 - 38	21	-12	2.44	1.36	6	8	19	21	1	2	4	9
1	Mike Miles	36:28	03:32	74 - 60	3 - 8	14	-5	2.03	0.85	14	0	38	2	2	1	11	2
2	Emanuel Miller	24:10	15:50	37 - 42	40 - 26	-5	14	1.53	2.53	9	5	27	13	2	1	8	5
3	Francisco Farabello	13:43	26:17	26 - 28	51 - 40	-2	11	1.90	1.94	4	10	12	28	1	2	6	7
4	Eddie Lampkin	19:51	20:09	39 - 39	38 - 29	0	9	1.96	1.89	8	6	19	21	2	1	8	5
5	Charles O'Bannon	26:26	13:34	48 - 45	29 - 23	3	6	1.82	2.14	11	3	27	13	3	0	11	2
10	Damion Baugh	35:58	04:02	65 - 65	12 - 3	0	9	1.81	2.98	13	1	35	5	3	0	12	1
12	Xavier Cork	13:01	26:59	18 - 22	59 - 46	-4	13	1.38	2.19	0	14	12	28	0	3	4	9
21	JaKobe Coles	04:41	35:19	12 - 4	65 - 64	8	1	2.56	1.84	1	13	5	35	0	3	1	12
25	Souleymane Doumbia	04:49	35:11	15 - 5	62 - 63	10	-1	3.11	1.76	4	10	6	34	1	2	0	13

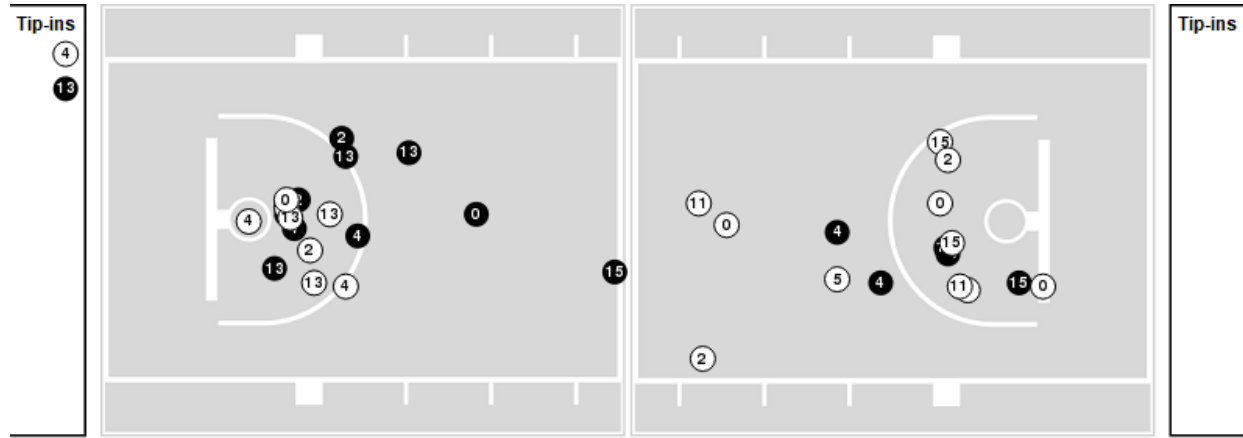


Players => AllFG Types=>AllResults=>All
LSU

All Field Goals



Blow Up Chart



● Made ○ Missed N - Player Number

LSU	M/A	%
Field Goals	24/65	37
2 Points	18/46	39
3 Points	6/19	32
Free Throws	14/17	82

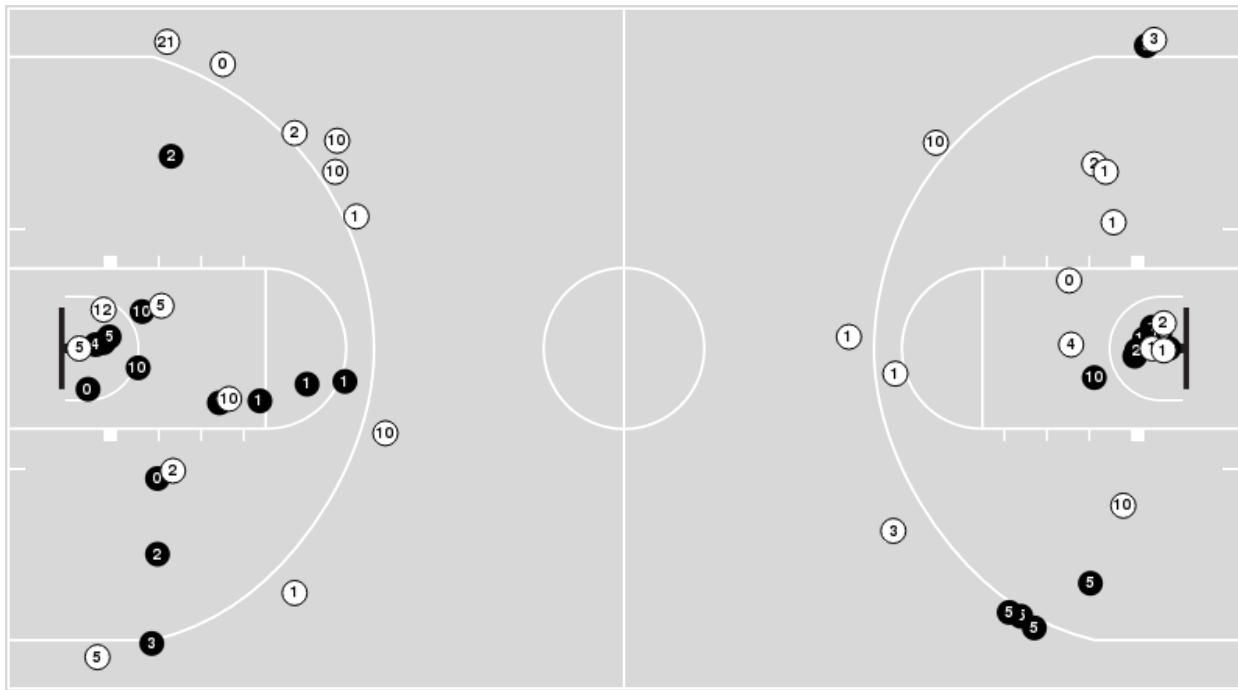
LSU	M/A	%
Points in the Paint	32 (16 / 35)	46
Fast Break Points	6 (4/5)	80
Second Chance Points	21 (13/18)	72
Effective FG%	42	



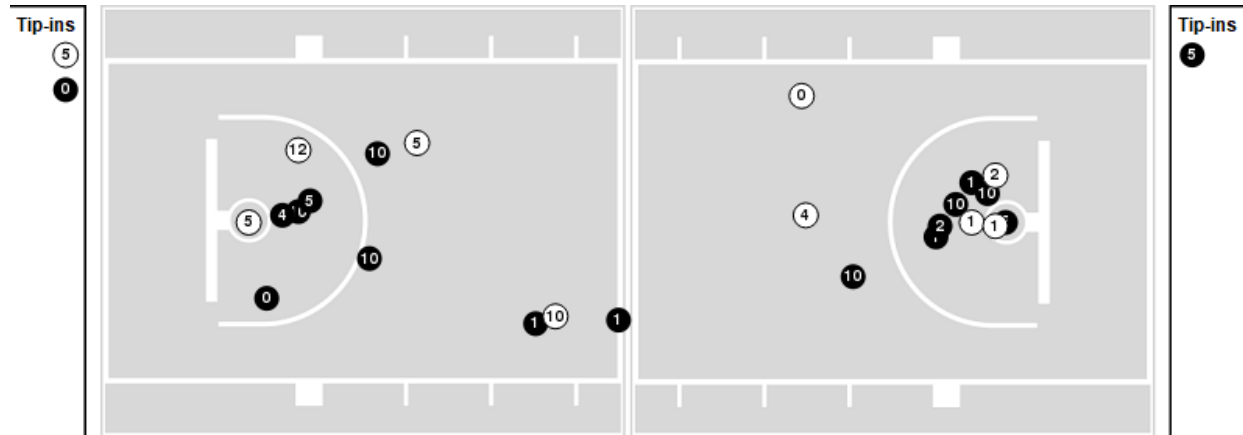
Players => 0, 1, 2, 3, 4, 5, 10, 11, 12, 13, 21, 25, 30, 33, 35FG Types=>AllResults=>All

TCU

All Field Goals



Blow Up Chart



● Made ○ Missed N - Player Number

TCU	M/A	%
Field Goals	27/55	49
2 Points	22/37	59
3 Points	5/18	28
Free Throws	18/27	67

TCU	M/A	%
Points in the Paint	32 (16 / 25)	64
Fast Break Points	4 (2/3)	67
Second Chance Points	14 (8/15)	53
Effective FG%	54	



Official Basketball Rotations Summary - Final
LSU at TCU
 01/29/22 Ed and Rae Schollmaier Arena, Fort Worth
 2021-22 Men's Basketball

Game Time: 11:00 AM
 Game Duration: 2:06
 Attendance: 6,539

Officials: Gary Maxwell, Darron George, Bret Smith

LSU

Lineup	Quarter On	Time On	Quarter Off	Time Off	Time on Court	Score	Score Diff	Reb	Stl	Tov	Ass	PPP
0- Murray B/ 2- Gaines E/ 4- Days D/ 13- Eason T/ 15- Reid E/	1	20:00	1	15:08	04:52	8-10	-2	0	4	0	3	0.7663
1- Pinson X/ 3- Fudge A/ 4- Days D/ 5- Wilkinson M/ 15- Reid E/	1	15:08	1	14:06	01:02	0-1	-1	2	0	0	0	0.0000
1- Pinson X/ 3- Fudge A/ 5- Wilkinson M/ 11- Williams J/ 13- Eason T/	1	14:06	1	13:16	00:50	1-2	-1	0	0	0	0	2.2727
0- Murray B/ 1- Pinson X/ 4- Days D/ 11- Williams J/ 13- Eason T/	1	13:16	1	13:16	00:00	1-0	1	0	0	0	0	2.2727
0- Murray B/ 2- Gaines E/ 4- Days D/ 11- Williams J/ 13- Eason T/	1	13:16	1	11:37	01:39	2-0	2	2	1	1	1	0.6667
0- Murray B/ 2- Gaines E/ 4- Days D/ 5- Wilkinson M/ 15- Reid E/	1	11:37	1	10:53	00:44	0-0	0	1	0	0	0	0.0000
0- Murray B/ 1- Pinson X/ 4- Days D/ 5- Wilkinson M/ 15- Reid E/	1	10:53	1	09:12	01:41	5-2	3	3	0	0	1	1.6667
1- Pinson X/ 5- Wilkinson M/ 11- Williams J/ 13- Eason T/ 24- O'Neal S/	1	09:12	1	08:04	01:08	0-2	-2	1	0	1	0	0.0000
1- Pinson X/ 4- Days D/ 5- Wilkinson M/ 11- Williams J/ 24- O'Neal S/	1	08:04	1	07:53	00:11	0-0	0	0	0	0	0	0.0000
2- Gaines E/ 4- Days D/ 5- Wilkinson M/ 11- Williams J/ 15- Reid E/	1	07:53	1	05:28	02:25	4-6	-2	4	0	0	1	1.1628
0- Murray B/ 2- Gaines E/ 3- Fudge A/ 4- Days D/ 15- Reid E/	1	05:28	1	05:28	00:00	1-0	1	0	0	0	0	2.2727
0- Murray B/ 2- Gaines E/ 3- Fudge A/ 13- Eason T/ 15- Reid E/	1	05:28	1	05:00	00:28	2-0	2	0	0	0	1	2.0000
0- Murray B/ 2- Gaines E/ 3- Fudge A/ 13- Eason T/ 24- O'Neal S/	1	05:00	1	04:30	00:30	0-3	-3	0	0	1	0	0.0000
0- Murray B/ 2- Gaines E/ 3- Fudge A/ 13- Eason T/ 15- Reid E/	1	04:30	1	04:03	00:27	0-2	-2	0	0	0	0	0.0000
0- Murray B/ 2- Gaines E/ 5- Wilkinson M/ 13- Eason T/ 15- Reid E/	1	04:03	1	03:22	00:41	0-2	-2	1	0	0	0	0.0000
0- Murray B/ 2- Gaines E/ 4- Days D/ 5- Wilkinson M/ 15- Reid E/	1	03:22	1	02:57	00:25	2-0	2	0	0	0	0	2.2727
0- Murray B/ 1- Pinson X/ 4- Days D/ 5- Wilkinson M/ 15- Reid E/	1	02:57	1	02:05	00:52	3-3	0	1	0	1	1	1.5000
0- Murray B/ 4- Days D/ 5- Wilkinson M/ 11- Williams J/ 15- Reid E/	1	02:05	1	01:19	00:46	0-4	-4	0	0	0	0	0.0000
0- Murray B/ 1- Pinson X/ 4- Days D/ 5- Wilkinson M/ 13- Eason T/	1	01:19	2	20:00	01:19	0-1	-1	1	0	0	0	0.0000
0- Murray B/ 2- Gaines E/ 4- Days D/ 13- Eason T/ 15- Reid E/	2	20:00	2	19:20	00:40	0-0	0	1	0	1	0	0.0000
0- Murray B/ 2- Gaines E/ 3- Fudge A/ 4- Days D/ 15- Reid E/	2	19:20	2	16:14	03:06	5-9	-4	5	0	1	2	1.0246
0- Murray B/ 2- Gaines E/ 4- Days D/ 5- Wilkinson M/ 15- Reid E/	2	16:14	2	15:56	00:18	0-3	-3	0	0	0	0	0.0000
0- Murray B/ 2- Gaines E/ 4- Days D/ 5- Wilkinson M/ 13- Eason T/	2	15:56	2	12:41	03:15	9-0	9	5	0	0	0	2.0833
0- Murray B/ 2- Gaines E/ 5- Wilkinson M/ 13- Eason T/ 15- Reid E/	2	12:41	2	11:58	00:43	4-2	2	0	0	0	1	2.7778
0- Murray B/ 2- Gaines E/ 4- Days D/ 5- Wilkinson M/ 15- Reid E/	2	11:58	2	09:19	02:39	7-4	3	2	0	0	2	2.3333
0- Murray B/ 2- Gaines E/ 5- Wilkinson M/ 13- Eason T/ 15- Reid E/	2	09:19	2	09:04	00:15	0-0	0	1	0	1	0	0.0000
0- Murray B/ 2- Gaines E/ 4- Days D/ 13- Eason T/ 15- Reid E/	2	09:04	2	09:03	00:01	0-1	-1	0	0	0	0	0.0000
0- Murray B/ 2- Gaines E/ 5- Wilkinson M/ 13- Eason T/ 15- Reid E/	2	09:03	2	07:45	01:18	2-2	0	2	1	1	1	1.0000
0- Murray B/ 2- Gaines E/ 5- Wilkinson M/ 13- Eason T/ 24- O'Neal S/	2	07:45	2	06:51	00:54	0-5	-5	0	0	1	0	0.0000
0- Murray B/ 2- Gaines E/ 11- Williams J/ 13- Eason T/ 24- O'Neal S/	2	06:51	2	06:39	00:12	1-1	0	0	0	0	0	2.2727
0- Murray B/ 2- Gaines E/ 4- Days D/ 11- Williams J/ 13- Eason T/	2	06:39	2	03:45	02:54	5-2	3	1	2	0	1	1.1261
0- Murray B/ 2- Gaines E/ 4- Days D/ 5- Wilkinson M/ 13- Eason T/	2	03:45	2	00:00	03:45	6-10	-4	1	0	0	0	1.0204



Official Basketball Rotations Summary - Final
LSU at TCU
 01/29/22 Ed and Rae Schollmaier Arena, Fort Worth
 2021-22 Men's Basketball

Game Time: 11:00 AM
 Game Duration: 2:06
 Attendance: 6,539

Officials: Gary Maxwell, Darron George, Bret Smith

TCU

Lineup	Quarter On	Time On	Quarter Off	Time Off	Time on Court	Score	Score Diff	Reb	Stl	Tov	Ass	PPP
1- Miles M/ 2- Miller E/ 4- Lampkin E/ 5- O'Bannon C/ 10- Baugh D/	1	20:00	1	16:23	03:37	6-8	-2	7	0	4	3	0.8571
0- Peavy M/ 1- Miles M/ 2- Miller E/ 10- Baugh D/ 25- Doumbia S/	1	16:23	1	15:08	01:15	4-0	4	3	0	0	0	2.0000
0- Peavy M/ 1- Miles M/ 2- Miller E/ 3- Farabello F/ 25- Doumbia S/	1	15:08	1	14:21	00:47	0-0	0	1	0	0	0	0.0000
0- Peavy M/ 1- Miles M/ 3- Farabello F/ 4- Lampkin E/ 21- Coles J/	1	14:21	1	14:06	00:15	1-0	1	1	0	0	0	2.2727
0- Peavy M/ 3- Farabello F/ 4- Lampkin E/ 10- Baugh D/ 21- Coles J/	1	14:06	1	13:16	00:50	2-1	1	0	0	0	0	2.0000
0- Peavy M/ 2- Miller E/ 3- Farabello F/ 4- Lampkin E/ 10- Baugh D/	1	13:16	1	12:26	00:50	0-1	-1	1	0	1	0	0.0000
2- Miller E/ 3- Farabello F/ 4- Lampkin E/ 5- O'Bannon C/ 10- Baugh D/	1	12:26	1	11:37	00:49	0-2	-2	0	1	0	0	0.0000
1- Miles M/ 2- Miller E/ 4- Lampkin E/ 5- O'Bannon C/ 10- Baugh D/	1	11:37	1	09:12	02:25	2-5	-3	3	0	0	0	0.5000
0- Peavy M/ 1- Miles M/ 2- Miller E/ 10- Baugh D/ 12- Cork X/	1	09:12	1	05:28	03:44	8-4	4	4	0	0	0	1.6393
0- Peavy M/ 1- Miles M/ 4- Lampkin E/ 10- Baugh D/ 21- Coles J/	1	05:28	1	05:28	00:00	0-0	0	0	0	0	0	0.0000
0- Peavy M/ 1- Miles M/ 3- Farabello F/ 4- Lampkin E/ 21- Coles J/	1	05:28	1	03:22	02:06	7-3	4	1	0	1	1	1.7500
0- Peavy M/ 1- Miles M/ 3- Farabello F/ 4- Lampkin E/ 10- Baugh D/	1	03:22	1	02:57	00:25	1-2	-1	0	0	0	0	2.2727
0- Peavy M/ 1- Miles M/ 4- Lampkin E/ 5- O'Bannon C/ 10- Baugh D/	1	02:57	1	01:30	01:27	5-3	2	2	0	1	1	1.2887
1- Miles M/ 5- O'Bannon C/ 10- Baugh D/ 12- Cork X/ 21- Coles J/	1	01:30	2	20:00	01:30	2-0	2	3	0	0	0	1.0638
1- Miles M/ 2- Miller E/ 4- Lampkin E/ 5- O'Bannon C/ 10- Baugh D/	2	20:00	2	18:43	01:17	1-0	1	0	1	0	0	0.3472
1- Miles M/ 2- Miller E/ 5- O'Bannon C/ 10- Baugh D/ 25- Doumbia S/	2	18:43	2	17:23	01:20	2-2	0	2	0	0	1	1.0000
0- Peavy M/ 1- Miles M/ 5- O'Bannon C/ 10- Baugh D/ 25- Doumbia S/	2	17:23	2	15:56	01:27	9-3	6	0	1	0	3	3.0000
0- Peavy M/ 1- Miles M/ 5- O'Bannon C/ 10- Baugh D/ 12- Cork X/	2	15:56	2	12:41	03:15	0-8	-8	0	0	1	0	0.0000
1- Miles M/ 2- Miller E/ 3- Farabello F/ 4- Lampkin E/ 10- Baugh D/	2	12:41	2	09:19	03:22	6-12	-6	2	0	0	2	1.3514
1- Miles M/ 2- Miller E/ 4- Lampkin E/ 5- O'Bannon C/ 10- Baugh D/	2	09:19	2	07:45	01:34	3-2	1	0	0	1	1	0.9036
0- Peavy M/ 1- Miles M/ 4- Lampkin E/ 5- O'Bannon C/ 10- Baugh D/	2	07:45	2	07:45	00:00	1-0	1	0	0	0	0	1.1364
0- Peavy M/ 1- Miles M/ 3- Farabello F/ 4- Lampkin E/ 5- O'Bannon C/	2	07:45	2	06:51	00:54	4-0	4	2	0	0	0	2.1277
0- Peavy M/ 3- Farabello F/ 5- O'Bannon C/ 10- Baugh D/ 12- Cork X/	2	06:51	2	06:39	00:12	1-0	1	0	0	0	0	2.2727
2- Miller E/ 3- Farabello F/ 5- O'Bannon C/ 10- Baugh D/ 12- Cork X/	2	06:39	2	05:48	00:51	0-4	-4	1	0	1	0	0.0000
1- Miles M/ 3- Farabello F/ 5- O'Bannon C/ 10- Baugh D/ 12- Cork X/	2	05:48	2	04:27	01:21	2-2	0	2	0	2	0	0.6667
0- Peavy M/ 1- Miles M/ 5- O'Bannon C/ 10- Baugh D/ 12- Cork X/	2	04:27	2	02:19	02:08	5-4	1	2	0	0	0	2.1552
0- Peavy M/ 1- Miles M/ 2- Miller E/ 5- O'Bannon C/ 10- Baugh D/	2	02:19	2	01:24	00:55	3-1	2	1	0	0	1	2.0833
1- Miles M/ 2- Miller E/ 3- Farabello F/ 5- O'Bannon C/ 10- Baugh D/	2	01:24	2	00:22	01:01	2-1	1	1	0	1	1	1.0000
0- Peavy M/ 1- Miles M/ 2- Miller E/ 5- O'Bannon C/ 10- Baugh D/	2	00:22	2	00:00	00:23	0-0	0	1	0	0	0	0.0000



LSU at TCU

01/29/22 Ed and Rae Schollmaier Arena, Fort Worth
2021-22 Men's Basketball

Game Time: 11:00 AM
Game Duration: 2:06
Attendance: 6,539

Officials: Gary Maxwell, Darron George, Bret Smith

LSU

Lineup	Time	Score	Score Diff	Pts/Min	Reb	Stl	Tov	Ass	PPP
0- Murray B/ 2- Gaines E/ 4- Days D/ 5- Wilkinson M/ 13- Eason T/	07:00	15-10	5	2.1429	6	0	0	0	1.4706
0- Murray B/ 2- Gaines E/ 4- Days D/ 13- Eason T/ 15- Reid E/	05:33	8-11	-3	1.4414	1	4	1	3	0.6993
0- Murray B/ 2- Gaines E/ 4- Days D/ 11- Williams J/ 13- Eason T/	04:33	7-2	5	1.5385	3	3	1	2	0.9409
0- Murray B/ 2- Gaines E/ 4- Days D/ 5- Wilkinson M/ 15- Reid E/	04:06	9-7	2	2.1951	3	0	0	2	1.8443
0- Murray B/ 2- Gaines E/ 3- Fudge A/ 4- Days D/ 15- Reid E/	03:06	6-9	-3	1.9355	5	0	1	2	1.1278
0- Murray B/ 2- Gaines E/ 5- Wilkinson M/ 13- Eason T/ 15- Reid E/	02:57	6-6	0	2.0339	4	1	2	2	1.1029
0- Murray B/ 1- Pinson X/ 4- Days D/ 5- Wilkinson M/ 15- Reid E/	02:33	8-5	3	3.1373	4	0	1	2	1.6000
2- Gaines E/ 4- Days D/ 5- Wilkinson M/ 11- Williams J/ 15- Reid E/	02:25	4-6	-2	1.6552	4	0	0	1	1.1628
0- Murray B/ 1- Pinson X/ 4- Days D/ 5- Wilkinson M/ 13- Eason T/	01:19	0-1	-1	0.0000	1	0	0	0	0.0000
1- Pinson X/ 5- Wilkinson M/ 11- Williams J/ 13- Eason T/ 24- O'Neal S/	01:08	0-2	-2	0.0000	1	0	1	0	0.0000
1- Pinson X/ 3- Fudge A/ 4- Days D/ 5- Wilkinson M/ 15- Reid E/	01:02	0-1	-1	0.0000	2	0	0	0	0.0000
0- Murray B/ 2- Gaines E/ 3- Fudge A/ 13- Eason T/ 15- Reid E/	00:55	2-2	0	2.1818	0	0	0	1	2.0000
0- Murray B/ 2- Gaines E/ 5- Wilkinson M/ 13- Eason T/ 24- O'Neal S/	00:54	0-5	-5	0.0000	0	0	1	0	0.0000
1- Pinson X/ 3- Fudge A/ 5- Wilkinson M/ 11- Williams J/ 13- Eason T/	00:50	1-2	-1	1.2000	0	0	0	0	2.2727
0- Murray B/ 4- Days D/ 5- Wilkinson M/ 11- Williams J/ 15- Reid E/	00:46	0-4	-4	0.0000	0	0	0	0	0.0000
0- Murray B/ 2- Gaines E/ 3- Fudge A/ 13- Eason T/ 24- O'Neal S/	00:30	0-3	-3	0.0000	0	0	1	0	0.0000
0- Murray B/ 2- Gaines E/ 11- Williams J/ 13- Eason T/ 24- O'Neal S/	00:12	1-1	0	5.0000	0	0	0	0	2.2727
1- Pinson X/ 4- Days D/ 5- Wilkinson M/ 11- Williams J/ 24- O'Neal S/	00:11	0-0	0	0.0000	0	0	0	0	0.0000
0- Murray B/ 1- Pinson X/ 4- Days D/ 11- Williams J/ 13- Eason T/	00:00	1-0	1	∞	0	0	0	0	2.2727



LSU at TCU

01/29/22 Ed and Rae Schollmaier Arena, Fort Worth
2021-22 Men's Basketball

Game Time: 11:00 AM

Game Duration: 2:06

Attendance: 6,539

Officials: Gary Maxwell, Darron George, Bret Smith

TCU

Lineup	Time	Score	Score Diff	Pts/Min	Reb	Stl	Tov	Ass	PPP
1- Miles M/ 2- Miller E/ 4- Lampkin E/ 5- O'Bannon C/ 10- Baugh D/	08:53	12-15	-3	1.3508	10	1	5	4	0.6977
0- Peavy M/ 1- Miles M/ 5- O'Bannon C/ 10- Baugh D/ 12- Cork X/	05:23	5-12	-7	0.9288	2	0	1	0	0.7911
0- Peavy M/ 1- Miles M/ 2- Miller E/ 10- Baugh D/ 12- Cork X/	03:44	8-4	4	2.1429	4	0	0	0	1.6393
1- Miles M/ 2- Miller E/ 3- Farabello F/ 4- Lampkin E/ 10- Baugh D/	03:22	6-12	-6	1.7822	2	0	0	2	1.3514
0- Peavy M/ 1- Miles M/ 3- Farabello F/ 4- Lampkin E/ 21- Coles J/	02:21	8-3	5	3.4043	2	0	1	1	1.8018
1- Miles M/ 5- O'Bannon C/ 10- Baugh D/ 12- Cork X/ 21- Coles J/	01:30	2-0	2	1.3333	3	0	0	0	1.0638
0- Peavy M/ 1- Miles M/ 4- Lampkin E/ 5- O'Bannon C/ 10- Baugh D/	01:27	6-3	3	4.1379	2	0	1	1	1.2605
0- Peavy M/ 1- Miles M/ 5- O'Bannon C/ 10- Baugh D/ 25- Doumbia S/	01:27	9-3	6	6.2069	0	1	0	3	3.0000
1- Miles M/ 3- Farabello F/ 5- O'Bannon C/ 10- Baugh D/ 12- Cork X/	01:21	2-2	0	1.4815	2	0	2	0	0.6667
1- Miles M/ 2- Miller E/ 5- O'Bannon C/ 10- Baugh D/ 25- Doumbia S/	01:20	2-2	0	1.5000	2	0	0	1	1.0000
0- Peavy M/ 1- Miles M/ 2- Miller E/ 5- O'Bannon C/ 10- Baugh D/	01:18	3-1	2	2.3077	2	0	0	1	2.0833
0- Peavy M/ 1- Miles M/ 2- Miller E/ 10- Baugh D/ 25- Doumbia S/	01:15	4-0	4	3.2000	3	0	0	0	2.0000
1- Miles M/ 2- Miller E/ 3- Farabello F/ 5- O'Bannon C/ 10- Baugh D/	01:01	2-1	1	1.9672	1	0	1	1	1.0000
0- Peavy M/ 1- Miles M/ 3- Farabello F/ 4- Lampkin E/ 5- O'Bannon C/	00:54	4-0	4	4.4444	2	0	0	0	2.1277
2- Miller E/ 3- Farabello F/ 5- O'Bannon C/ 10- Baugh D/ 12- Cork X/	00:51	0-4	-4	0.0000	1	0	1	0	0.0000
0- Peavy M/ 3- Farabello F/ 4- Lampkin E/ 10- Baugh D/ 21- Coles J/	00:50	2-1	1	2.4000	0	0	0	0	2.0000
0- Peavy M/ 2- Miller E/ 3- Farabello F/ 4- Lampkin E/ 10- Baugh D/	00:50	0-1	-1	0.0000	1	0	1	0	0.0000
2- Miller E/ 3- Farabello F/ 4- Lampkin E/ 5- O'Bannon C/ 10- Baugh D/	00:49	0-2	-2	0.0000	0	1	0	0	0.0000
0- Peavy M/ 1- Miles M/ 2- Miller E/ 3- Farabello F/ 25- Doumbia S/	00:47	0-0	0	0.0000	1	0	0	0	0.0000
0- Peavy M/ 1- Miles M/ 3- Farabello F/ 4- Lampkin E/ 10- Baugh D/	00:25	1-2	-1	2.4000	0	0	0	0	2.2727
0- Peavy M/ 3- Farabello F/ 5- O'Bannon C/ 10- Baugh D/ 12- Cork X/	00:12	1-0	1	5.0000	0	0	0	0	2.2727
0- Peavy M/ 1- Miles M/ 4- Lampkin E/ 10- Baugh D/ 21- Coles J/	00:00	0-0	0	NaN	0	0	0	0	0.0000