



**Arkansas at LSU**

01/15/22 Maravich Assembly Center, Baton Rouge  
2021-22 Men's Basketball

Game Time: 1:00 PM  
Game Duration: 2:16  
Attendance: 12,734

Officials: Tony Greene, Mike Nance, Rob Rorke

Arkansas - 65

Record: 12-5 (2-3)

NO.	Name	F	Min	FG	3P	FT	Rebounds			Fouls		TP	AS	TO	ST	Blocks		+/-
				M-A	M-A	M-A	OR	DR	TOT	PF	FD					BS	BA	
3	Trey Wade	F	20:02	1-2	0-0	0-0	2	0	2	1	1	2	0	0	1	0	0	-12
10	Jaylin Williams	F	33:53	4-7	1-2	2-2	1	12	13	3	6	11	1	0	3	1	0	9
0	Stanley Umude	G	24:09	2-4	1-2	3-4	1	5	6	2	2	8	0	3	0	0	0	6
1	JD Notae	G	26:41	7-13	2-6	3-4	1	2	3	4	4	19	4	3	1	0	1	18
5	Au'Diese Toney	G	38:40	4-8	0-1	4-6	2	2	4	1	3	12	0	4	1	1	1	4
4	Davonte Davis		32:37	3-9	1-3	0-0	4	4	8	3	1	7	3	5	1	0	2	7
11	Chris Lykes		21:16	2-11	0-3	2-2	0	1	1	4	4	6	0	1	0	0	0	1
23	Connor Vanover		01:17	0-1	0-0	0-0	0	0	0	0	0	0	0	0	0	0	0	2
2	Khalen Robinson		01:25	0-0	0-0	0-0	0	0	0	0	0	0	0	1	0	0	0	
Team							2	2	4			0		2				
<b>Totals</b>				23-55	5-17	14-18	13	28	41	18	21	65	8	19	7	2	4	7

Shooting By Period		
1st FG%	11-27	40.7%
3PT%	0-8	0.0%
FT%	9-10	90%
2nd FG%	12-28	42.9%
3PT%	5-9	55.6%
FT%	5-8	62.5%
GM FG%	23-55	41.8%
3PT%	5-17	29.4%
FT%	14-18	77.8%

Dead Ball Rebounds: 2, 0

Technical Fouls::NONE

LSU - 58

Record: 15-2 (3-2)

NO.	Name	F	Min	FG	3P	FT	Rebounds			Fouls		TP	AS	TO	ST	Blocks		+/-
				M-A	M-A	M-A	OR	DR	TOT	PF	FD					BS	BA	
4	Darius Days	F	30:16	1-8	0-3	1-2	1	3	4	5	2	3	2	2	3	1	0	4
5	Mwani Wilkinson	F	24:12	0-1	0-0	2-2	0	1	1	1	2	2	0	1	1	2	0	-6
15	Efton Reid	C	14:59	3-6	1-2	0-0	0	2	2	2	1	7	0	2	0	0	0	-3
0	Brandon Murray	G	19:50	1-5	0-3	0-0	0	1	1	5	0	2	2	3	0	0	0	-5
2	Eric Gaines	G	36:39	6-14	1-4	1-4	3	3	6	3	5	14	4	4	4	0	1	-9
13	Tari Eason		25:56	4-8	1-3	4-5	2	2	4	2	5	13	2	3	3	0	0	-11
3	Alex Fudge		23:18	5-6	2-2	1-2	1	3	4	1	1	13	0	0	2	1	0	-5
11	Justice Williams		17:05	1-5	0-1	2-2	0	2	2	2	1	4	1	0	1	0	1	0
24	Shareef O'Neal		07:45	0-2	0-1	0-0	0	3	3	0	1	0	0	1	0	0	0	0
Team							4	0	4			0		0				
<b>Totals</b>				21-55	5-19	11-17	11	20	31	21	18	58	11	16	14	4	2	-7

Shooting By Period		
1st FG%	13-30	43.3%
3PT%	3-10	30.0%
FT%	4-6	66.7%
2nd FG%	8-25	32.0%
3PT%	2-9	22.2%
FT%	7-11	63.6%
GM FG%	21-55	38.2%
3PT%	5-19	26.3%
FT%	11-17	64.7%

Dead Ball Rebounds: 1, 1

Technical Fouls::NONE

	ARK	LSU
Biggest lead	7 (2 <sup>nd</sup> 0:11)	8 (2 <sup>nd</sup> 9:01)
Best Scoring Run	10 (2 <sup>nd</sup> 3:31)	7 (1 <sup>st</sup> 15:41)
Lead Changes	7	
Times Tied	9	
Time with Lead	06:48	28:32

	ARK	LSU
Points from		
Turnovers	20	13
Paint	30	28
Second Chance	13	10
Fast Breaks	10	5
Bench	13	30

	Period by Period Scoring		
	1st	2nd	TOT
ARK	31	34	65
LSU	33	25	58



**Period 1**

**Quarter Starters:**

<b>LSU</b>	0 Murray B	2 Gaines E	4 Days D	5 Wilkinson M	15 Reid E
<b>ARK</b>	0 Umude S	1 Notae J	3 Wade T	5 Toney A	10 Williams J

Game Time	LSU	Score	Diff	ARK
20:00	15 REID E jumpball won			10 WILLIAMS J jumpball lost
19:37	15 REID E 2pt FG in the paint, jump shot made (2)	<b>2-0</b>	<b>2</b>	
19:37	4 DAYS D assist (1)			
19:15				1 NOTAE J 2pt FG in the paint, layup missed
19:09				3 WADE T offensive rebound (1)
19:03				0 UMUDE S 2pt FG second chance outside the paint, jump shot missed
19:00	15 REID E defensive rebound (1)			
18:40	2 GAINES E 2pt FG in the paint, layup missed			
18:37				10 WILLIAMS J defensive rebound (1)
18:31		<b>2-2</b>	<b>0</b>	5 TONEY A 2pt FG in the paint, layup made (2)
18:31				1 NOTAE J assist (1)
18:14	15 REID E 2pt FG outside the paint, jump shot made (4)	<b>4-2</b>	<b>2</b>	
18:14	2 GAINES E assist (1)			
18:01	4 DAYS D steal (1)			1 NOTAE J turnover bad pass (1)
17:48	0 MURRAY B 2pt FG from turnover outside the paint, jump shot made (2)	<b>6-2</b>	<b>4</b>	
17:30	5 WILKINSON M steal (1)			5 TONEY A turnover lost ball (1)
17:11	15 REID E 3pt FG from turnover, jump shot missed			
17:08				10 WILLIAMS J defensive rebound (2)
16:51	2 GAINES E steal (1)			0 UMUDE S turnover bad pass (1)
16:45	2 GAINES E 2pt FG from turnover in the paint, layup blocked			
16:45				5 TONEY A block (1)
16:44	offensive rebound (2)			
16:44				0 UMUDE S substitution out
16:44				4 DAVIS D substitution in
16:32	2 GAINES E 3pt FG from turnover second chance, jump shot missed			
16:29				1 NOTAE J defensive rebound (1)
16:09	15 REID E foul personal (1 - 1)			1 NOTAE J foul drawn (1)
16:09	15 REID E substitution out			
16:09	13 EASON T substitution in			
16:02				4 DAVIS D 3pt FG , jump shot missed
15:59	4 DAYS D defensive rebound (1)			
15:41	13 EASON T 3pt FG , jump shot made (3)	<b>9-2</b>	<b>7</b>	
15:41	2 GAINES E assist (2)			
15:32				Timeout 30 Sec
15:32	2 GAINES E substitution out			
15:32	5 WILKINSON M substitution out			
15:32	3 FUDGE A substitution in			
15:32	11 WILLIAMS J substitution in			
15:25	0 MURRAY B foul personal (1 - 2)			3 WADE T foul drawn (1)
15:23				5 TONEY A turnover out of bounds (2)
14:54	0 MURRAY B foul offensive (2 - 3)			10 WILLIAMS J foul drawn (1)



**Arkansas at LSU**

01/15/22 Maravich Assembly Center, Baton Rouge  
2021-22 Men's Basketball

**Game Time:** 1:00 PM  
**Game Duration:** 2:16  
**Attendance:** 12,734

**Officials:** Tony Greene, Mike Nance, Rob Rorke

Game Time	LSU	Score	Diff	ARK
14:54	0 MURRAY B turnover offensive (1)			
14:54	0 MURRAY B substitution out			
14:54	2 GAINES E substitution in			
14:54				5 TONEY A substitution out
14:54				11 LYKES C substitution in
14:32		<b>9-4</b>	<b>5</b>	10 WILLIAMS J 2pt FG from turnover outside the paint, jump shot made (2)
14:32				4 DAVIS D assist (1)
14:15	3 FUDGE A 2pt FG in the paint, layup made (2)	<b>11-4</b>	<b>7</b>	
13:51				4 DAVIS D 3pt FG , jump shot missed
13:48	2 GAINES E defensive rebound (1)			
13:41	4 DAYS D turnover bad pass (1)			3 WADE T steal (1)
13:37				4 DAVIS D 2pt FG from turnover in the paint, layup blocked
13:37	3 FUDGE A block (1)			
13:34				1 NOTAE J offensive rebound (2)
13:34		<b>11-6</b>	<b>5</b>	1 NOTAE J 2pt FG from turnover second chance in the paint, layup made (2)
13:34		<b>11-7</b>	<b>4</b>	1 NOTAE J free throw 1 - 1 made (3)
13:34	11 WILLIAMS J foul shooting (1 - 4)			1 NOTAE J foul drawn (2)
13:34	4 DAYS D substitution out			
13:34	15 REID E substitution in			
13:34				3 WADE T substitution out
13:34				5 TONEY A substitution in
13:20	15 REID E turnover lost ball (1)			4 DAVIS D steal (1)
13:18	15 REID E foul shooting (2 - 5)			1 NOTAE J foul drawn (3)
13:17	15 REID E substitution out			
13:17	4 DAYS D substitution in			
12:58		<b>11-9</b>	<b>2</b>	11 LYKES C 2pt FG from turnover outside the paint, jump shot made (2)
12:41	3 FUDGE A 3pt FG , jump shot made (5)	<b>14-9</b>	<b>5</b>	
12:33	11 WILLIAMS J foul personal (2 - 6)			11 LYKES C foul drawn (1)
12:33	11 WILLIAMS J substitution out			
12:33	5 WILKINSON M substitution in			
12:24	13 EASON T steal (1)			4 DAVIS D turnover lost ball (1)
12:20	2 GAINES E 2pt FG fast break from turnover in the paint, layup made (2)	<b>16-9</b>	<b>7</b>	
12:20	13 EASON T assist (1)			
12:10				11 LYKES C 3pt FG , jump shot missed
12:04				4 DAVIS D offensive rebound (1)
12:04		<b>16-11</b>	<b>5</b>	4 DAVIS D 2pt FG second chance in the paint, layup made (2)
11:42	5 WILKINSON M 2pt FG outside the paint, jump shot missed			
11:39				11 LYKES C defensive rebound (1)
11:32		<b>16-13</b>	<b>3</b>	10 WILLIAMS J 2pt FG in the paint, layup made (4)
11:32	3 FUDGE A foul shooting (1 - 7)			10 WILLIAMS J foul drawn (2)
11:32				Timeout media
11:32	3 FUDGE A substitution out			
11:32	13 EASON T substitution out			
11:32	0 MURRAY B substitution in			
11:32	24 O'NEAL S substitution in			
11:32		<b>16-14</b>	<b>2</b>	10 WILLIAMS J free throw 1 - 1 made (5)



**Arkansas at LSU**

01/15/22 Maravich Assembly Center, Baton Rouge  
2021-22 Men's Basketball

**Game Time:** 1:00 PM  
**Game Duration:** 2:16  
**Attendance:** 12,734

**Officials:** Tony Greene, Mike Nance, Rob Rorke

Game Time	LSU	Score	Diff	ARK
11:32				10 WILLIAMS J substitution out
11:32				3 WADE T substitution in
11:12	0 MURRAY B 3pt FG , jump shot missed			
11:09				5 TONEY A defensive rebound (1)
10:43				1 NOTAE J 3pt FG , jump shot missed
10:40	24 O'NEAL S defensive rebound (1)			
10:28	4 DAYS D 2pt FG outside the paint, jump shot missed			
10:24	2 GAINES E offensive rebound (2)			
10:24	2 GAINES E 2pt FG second chance in the paint, layup made (4)	<b>18-14</b>	<b>4</b>	
10:00		<b>18-16</b>	<b>2</b>	11 LYKES C 2pt FG outside the paint, jump shot made (4)
09:36	24 O'NEAL S 3pt FG , jump shot missed			
09:33				4 DAVIS D defensive rebound (2)
09:28				11 LYKES C 3pt FG , jump shot missed
09:25	4 DAYS D defensive rebound (2)			
09:10	24 O'NEAL S turnover offensive goal tending (1)			
09:10	4 DAYS D substitution out			
09:10	13 EASON T substitution in			
09:10				3 WADE T substitution out
09:10				10 WILLIAMS J substitution in
09:00		<b>18-18</b>	<b>0</b>	1 NOTAE J 2pt FG from turnover in the paint, layup made (5)
08:35	0 MURRAY B 3pt FG , jump shot missed			
08:32	offensive rebound (8)			
08:27	13 EASON T 2pt FG second chance in the paint, layup made (5)	<b>20-18</b>	<b>2</b>	
08:27	0 MURRAY B assist (1)			
08:00				1 NOTAE J 3pt FG , jump shot blocked
08:00	5 WILKINSON M block (1)			
07:57	5 WILKINSON M defensive rebound (1)			
07:56	5 WILKINSON M foul drawn (1)			1 NOTAE J foul personal (1 - 1)
07:56	Timeout media			
07:56	24 O'NEAL S substitution out			
07:56	15 REID E substitution in			
07:51	13 EASON T foul drawn (1)			5 TONEY A foul personal (1 - 2)
07:44	13 EASON T 2pt FG outside the paint, jump shot missed			
07:42				10 WILLIAMS J defensive rebound (3)
07:28		<b>20-20</b>	<b>0</b>	1 NOTAE J 2pt FG in the paint, layup made (7)
07:17	2 GAINES E foul drawn (1)			1 NOTAE J foul personal (2 - 3)
07:17	5 WILKINSON M substitution out			
07:17	3 FUDGE A substitution in			
07:17				1 NOTAE J substitution out
07:17				0 UMUDE S substitution in
07:08	15 REID E foul drawn (1)			10 WILLIAMS J foul personal (1 - 4)
07:06	15 REID E turnover out of bounds (2)			
07:06	15 REID E substitution out			
07:06	4 DAYS D substitution in			
06:59	0 MURRAY B foul personal (3 - 8)			11 LYKES C foul drawn (2)
06:59	0 MURRAY B substitution out			
06:59	11 WILLIAMS J substitution in			
06:59		<b>20-21</b>	<b>-1</b>	11 LYKES C 1&1 free throw 1 made (5)
06:59		<b>20-22</b>	<b>-2</b>	11 LYKES C 1&1 free throw 2 made (6)



Official Basketball Play by Play - First Half  
**Arkansas at LSU**  
 01/15/22 Maravich Assembly Center, Baton Rouge  
 2021-22 Men's Basketball

**Game Time:** 1:00 PM  
**Game Duration:** 2:16  
**Attendance:** 12,734

**Officials:** Tony Greene, Mike Nance, Rob Rorke

Game Time	LSU	Score	Diff	ARK
06:33	3 FUDGE A 3pt FG , jump shot made (8)	<b>23-22</b>	<b>1</b>	
06:33	11 WILLIAMS J assist (1)			
06:26		<b>23-24</b>	<b>-1</b>	5 TONEY A 2pt FG fast break in the paint, dunk, made (4)
06:26				4 DAVIS D assist (2)
06:24	Timeout 30 Sec			
06:01	2 GAINES E 2pt FG outside the paint, jump shot missed			
05:59				10 WILLIAMS J defensive rebound (4)
05:43	4 DAYS D steal (2)			0 UMUDE S turnover bad pass (2)
05:41	2 GAINES E foul drawn (2)			0 UMUDE S foul personal (1 - 5)
05:28	11 WILLIAMS J 2pt FG from turnover outside the paint, jump shot missed			
05:24	13 EASON T offensive rebound (1)			
05:20	13 EASON T foul offensive (1 - 9)			11 LYKES C foul drawn (3)
05:20	13 EASON T turnover offensive (1)			
05:20	13 EASON T substitution out			
05:20	24 O'NEAL S substitution in			
04:58				5 TONEY A 2pt FG from turnover in the paint, layup missed
04:58	24 O'NEAL S defensive rebound (2)			
04:58	24 O'NEAL S foul drawn (1)			10 WILLIAMS J foul personal (2 - 6)
04:46	4 DAYS D 2pt FG in the paint, layup missed			
04:43	4 DAYS D offensive rebound (3)			
04:43	4 DAYS D 2pt FG second chance in the paint, layup missed			
04:40				4 DAVIS D defensive rebound (3)
04:30				0 UMUDE S 3pt FG , jump shot missed
04:26				4 DAVIS D offensive rebound (4)
04:16	2 GAINES E steal (2)			4 DAVIS D turnover bad pass (2)
04:11	3 FUDGE A foul drawn (1)			4 DAVIS D foul shooting (1 - 7)
04:11	3 FUDGE A free throw fast break 1 - 2 made (9)	<b>24-24</b>	<b>0</b>	
04:11	4 DAYS D substitution out			
04:11	5 WILKINSON M substitution in			
04:11				10 WILLIAMS J substitution out
04:11				23 VANOVER C substitution in
04:11	3 FUDGE A free throw fast break 2 - 2 missed			
04:09				defensive rebound (14)
03:56				11 LYKES C 2pt FG outside the paint, jump shot missed
03:53				5 TONEY A offensive rebound (2)
03:53		<b>24-26</b>	<b>-2</b>	5 TONEY A 2pt FG second chance in the paint, layup made (6)
03:36	24 O'NEAL S 2pt FG in the paint, layup missed			
03:33				0 UMUDE S defensive rebound (1)
03:25				23 VANOVER C 2pt FG in the paint, layup missed
03:22				4 DAVIS D offensive rebound (5)
03:19				5 TONEY A turnover out of bounds (3)
03:19	Timeout media			
03:19	3 FUDGE A substitution out			
03:19	24 O'NEAL S substitution out			
03:19	4 DAYS D substitution in			
03:19	13 EASON T substitution in			
03:19				23 VANOVER C substitution out
03:19				3 WADE T substitution in



Official Basketball Play by Play - First Half  
**Arkansas at LSU**  
 01/15/22 Maravich Assembly Center, Baton Rouge  
 2021-22 Men's Basketball

**Game Time:** 1:00 PM  
**Game Duration:** 2:16  
**Attendance:** 12,734

**Officials:** Tony Greene, Mike Nance, Rob Rorke

Game Time	LSU	Score	Diff	ARK
03:08	11 WILLIAMS J foul drawn (1)			11 LYKES C foul personal (1 - 8)
03:08	11 WILLIAMS J 1&1 free throw 1 made (1)	<b>25-26</b>	<b>-1</b>	
03:08	11 WILLIAMS J 1&1 free throw 2 made (2)	<b>26-26</b>	<b>0</b>	
03:00	4 DAYS D foul shooting (1 - 10)			0 UMUDE S foul drawn (1)
03:00		<b>26-27</b>	<b>-1</b>	0 UMUDE S free throw fast break 1 - 2 made (1)
03:00		<b>26-28</b>	<b>-2</b>	0 UMUDE S free throw fast break 2 - 2 made (2)
02:36	13 EASON T 2pt FG in the paint, layup made (7)	<b>28-28</b>	<b>0</b>	
02:36	2 GAINES E assist (3)			
02:24	13 EASON T steal (2)			0 UMUDE S turnover bad pass (3)
02:20	4 DAYS D 3pt FG from turnover, jump shot missed			
02:16	2 GAINES E offensive rebound (3)			
02:12	11 WILLIAMS J 3pt FG from turnover second chance, jump shot missed			
02:08				0 UMUDE S defensive rebound (2)
02:08	4 DAYS D foul personal (2 - 11)			0 UMUDE S foul drawn (2)
02:08	5 WILKINSON M substitution out			
02:08	24 O'NEAL S substitution in			
02:08	4 DAYS D substitution out			
02:08	3 FUDGE A substitution in			
02:08		<b>28-29</b>	<b>-1</b>	0 UMUDE S free throw 1 - 2 made (3)
02:08				0 UMUDE S free throw 2 - 2 missed
02:06	11 WILLIAMS J defensive rebound (1)			
01:51	2 GAINES E 2pt FG in the paint, jump shot made (6)	<b>30-29</b>	<b>1</b>	
01:32				11 LYKES C 2pt FG outside the paint, jump shot missed
01:28	24 O'NEAL S defensive rebound (3)			
01:21	11 WILLIAMS J 2pt FG in the paint, layup made (4)	<b>32-29</b>	<b>3</b>	
01:21	13 EASON T assist (2)			
00:54				11 LYKES C 2pt FG outside the paint, jump shot missed
00:50				offensive rebound (19)
00:50				0 UMUDE S substitution out
00:50				3 WADE T substitution out
00:50				1 NOTAE J substitution in
00:50				10 WILLIAMS J substitution in
00:50				1 NOTAE J turnover bad pass (2)
00:50				1 NOTAE J substitution out
00:50				0 UMUDE S substitution in
00:38	2 GAINES E turnover lost ball (1)			10 WILLIAMS J steal (1)
00:35	13 EASON T foul shooting (2 - 12)			4 DAVIS D foul drawn (1)
00:35				4 DAVIS D substitution out
00:35				1 NOTAE J substitution in
00:35		<b>32-30</b>	<b>2</b>	1 NOTAE J free throw fast break 1 - 2 made (8)
00:35				10 WILLIAMS J substitution out
00:35				3 WADE T substitution in
00:35		<b>32-31</b>	<b>1</b>	1 NOTAE J free throw fast break 2 - 2 made (9)
00:35				1 NOTAE J substitution out
00:35				23 VANOVER C substitution in
00:11	2 GAINES E foul drawn (3)			11 LYKES C foul personal (2 - 9)
00:11				3 WADE T substitution out
00:11				1 NOTAE J substitution in



Official Basketball Play by Play - First Half

### Arkansas at LSU

01/15/22 Maravich Assembly Center, Baton Rouge  
2021-22 Men's Basketball

Game Time: 1:00 PM

Game Duration: 2:16

Attendance: 12,734

Officials: Tony Greene, Mike Nance, Rob Rorke

Game Time	LSU	Score	Diff	ARK
00:11				23 VANOVER C substitution out
00:11				10 WILLIAMS J substitution in
00:11	2 GAINES E 1&1 free throw 1 made (7)	<b>33-31</b>	<b>2</b>	
00:11	2 GAINES E 1&1 free throw 2 missed			
00:10				0 UMUDE S defensive rebound (3)
00:00				11 LYKES C 3pt FG , jump shot missed
00:00	defensive dead ball rebound (1)			
<b>END OF PERIOD</b>				
<b>LSU 33-31 ARK</b>				



**Arkansas at LSU**

01/15/22 Maravich Assembly Center, Baton Rouge  
2021-22 Men's Basketball

Game Time: 1:00 PM  
Game Duration: 2:16  
Attendance: 12,734

Officials: Tony Greene, Mike Nance, Rob Rorke

**Arkansas - 31**

NO.	Name	F	Min	FG			Rebounds			Fouls		TP	AS	TO	ST	Blocks		+/-
				M-A	M-A	M-A	OR	DR	TOT	PF	FD					BS	BA	
3	Trey Wade	F	11:41	0-0	0-0	0-0	1	0	1	0	1	0	0	0	1	0	0	-8
10	Jaylin Williams	F	13:53	2-2	0-0	1-1	0	4	4	2	2	5	0	0	1	0	0	0
0	Stanley Umude	G	10:33	0-2	0-1	3-4	0	3	3	1	2	3	0	3	0	0	0	-6
1	JD Notae	G	12:54	3-6	0-2	3-3	1	1	2	2	3	9	1	2	0	0	1	1
5	Au'Diese Toney	G	18:40	3-4	0-0	0-0	1	1	2	1	0	6	0	3	0	1	0	-5
4	Davonte Davis		16:08	1-4	0-2	0-0	3	2	5	1	1	2	2	2	1	0	1	1
11	Chris Lykes		14:54	2-8	0-3	2-2	0	1	1	2	3	6	0	0	0	0	0	5
23	Connor Vanover		01:17	0-1	0-0	0-0	0	0	0	0	0	0	0	0	0	0	0	2
Team							1	1	2			0		0				
<b>Totals</b>				11-27	0-8	9-10	7	13	20	9	12	31	3	10	3	1	2	-2

Shooting By Period		
1st FG%	11-27	40.7%
3PT%	0-8	0.0%
FT%	9-10	90%
GM FG%	11-27	40.7%
3PT%	0-8	0.0%
FT%	9-10	90.0%

Dead Ball Rebounds: 0, 0

Technical Fouls::NONE

**LSU - 33**

NO.	Name	F	Min	FG			Rebounds			Fouls		TP	AS	TO	ST	Blocks		+/-
				M-A	M-A	M-A	OR	DR	TOT	PF	FD					BS	BA	
4	Darius Days	F	14:39	0-4	0-1	0-0	1	2	3	2	0	0	1	1	2	0	0	4
5	Mwani Wilkinson	F	11:47	0-1	0-0	0-0	0	1	1	0	1	0	0	0	1	1	0	2
15	Efton Reid	C	04:58	2-3	0-1	0-0	0	1	1	2	1	4	0	2	0	0	0	2
0	Brandon Murray	G	09:39	1-3	0-2	0-0	0	0	0	3	0	2	1	1	0	0	0	4
2	Eric Gaines	G	19:22	3-7	0-1	1-2	2	1	3	0	3	7	3	1	2	0	1	2
13	Tari Eason		11:46	3-4	1-1	0-0	1	0	1	2	1	7	2	1	2	0	0	0
3	Alex Fudge		10:06	3-3	2-2	1-2	0	0	0	1	1	9	0	0	0	1	0	-4
11	Justice Williams		09:58	1-3	0-1	2-2	0	1	1	2	1	4	1	0	0	0	0	0
24	Shareef O'Neal		07:45	0-2	0-1	0-0	0	3	3	0	1	0	0	1	0	0	0	0
Team							2	0	2			0		0				
<b>Totals</b>				13-30	3-10	4-6	6	9	15	12	9	33	8	7	7	2	1	2

Shooting By Period		
1st FG%	13-30	43.3%
3PT%	3-10	30.0%
FT%	4-6	66.7%
GM FG%	13-30	43.3%
3PT%	3-10	30.0%
FT%	4-6	66.7%

Dead Ball Rebounds: 0, 1

Technical Fouls::NONE

	ARK	LSU
Biggest lead	2 (1st 6:59)	7 (1st 15:41)
Best Scoring Run	5 (1st 12:58)	7 (1st 15:41)
Lead Changes	4	
Times Tied	6	
Time with Lead	04:07	13:17

Points from	ARK	LSU
Turnovers	13	7
Paint	16	16
Second Chance	7	4
Fast Breaks	6	3
Bench	8	20

	Period by Period Scoring		
	1st	2nd	TOT
ARK	31	34	65
LSU	33	25	58





## Arkansas at LSU

01/15/22 Maravich Assembly Center, Baton Rouge  
2021-22 Men's Basketball

Game Time: 1:00 PM

Game Duration: 2:16

Attendance: 12,734

Officials: Tony Greene, Mike Nance, Rob Rorke

## Period 2

## Quarter Starters:

LSU	2 Gaines E	0 Murray B	4 Days D	5 Wilkinson M	15 Reid E
ARK	0 Umude S	1 Notae J	5 Toney A	10 Williams J	3 Wade T

Game Time	LSU	Score	Diff	ARK
20:00	3 FUDGE A substitution out			
20:00	11 WILLIAMS J substitution out			
20:00	13 EASON T substitution out			
20:00	24 O'NEAL S substitution out			
20:00	0 MURRAY B substitution in			
20:00	4 DAYS D substitution in			
20:00	5 WILKINSON M substitution in			
20:00	15 REID E substitution in			
20:00				11 LYKES C substitution out
20:00				3 WADE T substitution in
19:53				10 WILLIAMS J 2pt FG in the paint, layup missed
19:49	4 DAYS D defensive rebound (4)			
19:38	2 GAINES E 2pt FG in the paint, layup made (9)	35-31	4	
19:10		35-34	1	1 NOTAE J 3pt FG , jump shot made (12)
18:44	4 DAYS D foul drawn (1)			3 WADE T foul personal (1 - 1)
18:44				3 WADE T substitution out
18:44				4 DAVIS D substitution in
18:33	15 REID E 2pt FG in the paint, layup missed			
18:31				10 WILLIAMS J defensive rebound (5)
18:21		35-36	-1	1 NOTAE J 2pt FG in the paint, jump shot made (14)
18:07	15 REID E 3pt FG , jump shot made (7)	38-36	2	
18:07	0 MURRAY B assist (2)			
17:32				5 TONEY A 2pt FG in the paint, layup missed
17:28	2 GAINES E defensive rebound (4)			
17:10	2 GAINES E 3pt FG , jump shot made (12)	41-36	5	
17:10	4 DAYS D assist (2)			
16:55		41-39	2	0 UMUDE S 3pt FG , jump shot made (6)
16:55				10 WILLIAMS J assist (1)
16:36	2 GAINES E foul drawn (4)			1 NOTAE J foul shooting (3 - 2)
16:36	2 GAINES E free throw 1 - 2 missed			
16:36	offensive dead ball rebound (2)			
16:36	5 WILKINSON M substitution out			
16:36	15 REID E substitution out			
16:36	3 FUDGE A substitution in			
16:36	13 EASON T substitution in			
16:36				1 NOTAE J substitution out
16:36				2 ROBINSON K substitution in
16:36	2 GAINES E free throw 2 - 2 missed			
16:34				0 UMUDE S defensive rebound (4)
16:12	2 GAINES E steal (3)			4 DAVIS D turnover bad pass (3)
16:10	2 GAINES E foul drawn (5)			4 DAVIS D foul personal (2 - 3)
16:03	0 MURRAY B 3pt FG from turnover, jump shot missed			
15:58				10 WILLIAMS J defensive rebound (6)



**Arkansas at LSU**

Game Time	LSU	Score	Diff	ARK
15:49	3 FUDGE A steal (1)			5 TONEY A turnover bad pass (4)
15:49	Timeout media			
15:49	2 GAINES E substitution out			
15:49	11 WILLIAMS J substitution in			
15:36	0 MURRAY B foul offensive (4 - 1)			10 WILLIAMS J foul drawn (3)
15:36	0 MURRAY B turnover offensive (2)			
15:36	0 MURRAY B substitution out			
15:36	2 GAINES E substitution in			
15:30	4 DAYS D steal (3)			2 ROBINSON K turnover bad pass (1)
15:22	4 DAYS D 2pt FG fast break from turnover in the paint, layup made (2)	<b>43-39</b>	<b>4</b>	
15:11		<b>43-41</b>	<b>2</b>	10 WILLIAMS J 2pt FG fast break in the paint, layup made (7)
15:11				4 DAVIS D assist (3)
15:11	4 DAYS D foul shooting (3 - 2)			10 WILLIAMS J foul drawn (4)
15:11				2 ROBINSON K substitution out
15:11				11 LYKES C substitution in
15:11		<b>43-42</b>	<b>1</b>	10 WILLIAMS J free throw fast break 1 - 1 made (8)
14:47	11 WILLIAMS J 2pt FG in the paint, layup blocked			
14:47				10 WILLIAMS J block (1)
14:45	offensive rebound (18)			
14:45	4 DAYS D substitution out			
14:45	15 REID E substitution in			
14:44	13 EASON T turnover out of bounds (2)			
14:32	2 GAINES E foul shooting (1 - 3)			5 TONEY A foul drawn (1)
14:32				5 TONEY A free throw 1 - 2 missed
14:32				offensive dead ball rebound (1)
14:32		<b>43-43</b>	<b>0</b>	5 TONEY A free throw 2 - 2 made (7)
14:18	11 WILLIAMS J 2pt FG outside the paint, jump shot missed			
14:14				4 DAVIS D defensive rebound (6)
14:11				4 DAVIS D 2pt FG in the paint, layup missed
14:09	13 EASON T defensive rebound (2)			
14:07	13 EASON T foul drawn (2)			11 LYKES C foul personal (3 - 4)
14:07	11 WILLIAMS J substitution out			
14:07	5 WILKINSON M substitution in			
13:55	13 EASON T 3pt FG , jump shot missed			
13:51	13 EASON T offensive rebound (3)			
13:51	13 EASON T foul drawn (3)			0 UMUDE S foul shooting (2 - 5)
13:51	13 EASON T free throw 1 - 2 made (8)	<b>44-43</b>	<b>1</b>	
13:51				0 UMUDE S substitution out
13:51				3 WADE T substitution in
13:51	13 EASON T free throw 2 - 2 made (9)	<b>45-43</b>	<b>2</b>	
13:49	2 GAINES E steal (4)			11 LYKES C turnover lost ball (1)
13:48	2 GAINES E foul offensive (2 - 4)			11 LYKES C foul drawn (4)
13:48	2 GAINES E turnover offensive (2)			
13:37				5 TONEY A 3pt FG from turnover, jump shot missed
13:32				4 DAVIS D offensive rebound (7)
13:26				5 TONEY A 2pt FG from turnover second chance in the paint, layup blocked
13:26	5 WILKINSON M block (2)			
13:26				offensive rebound (26)



**Arkansas at LSU**

01/15/22 Maravich Assembly Center, Baton Rouge  
2021-22 Men's Basketball

**Game Time:** 1:00 PM  
**Game Duration:** 2:16  
**Attendance:** 12,734

**Officials:** Tony Greene, Mike Nance, Rob Rorke

Game Time	LSU	Score	Diff	ARK
13:16		<b>45-45</b>	<b>0</b>	4 DAVIS D 2pt FG from turnover second chance in the paint, layup made (4)
12:57	2 GAINES E 2pt FG in the paint, jump shot made (14)	<b>47-45</b>	<b>2</b>	
12:43	13 EASON T substitution out			
12:43	4 DAYS D substitution in			
12:27				4 DAVIS D 2pt FG outside the paint, jump shot missed
12:24	2 GAINES E defensive rebound (5)			
12:15	4 DAYS D 3pt FG , jump shot missed			
12:11	2 GAINES E offensive rebound (6)			
12:10	3 FUDGE A 2pt FG second chance in the paint, layup made (11)	<b>49-45</b>	<b>4</b>	
12:10	2 GAINES E assist (4)			
11:45				11 LYKES C 2pt FG in the paint, jump shot missed
11:41	3 FUDGE A defensive rebound (1)			
11:32	4 DAYS D foul drawn (2)			11 LYKES C foul shooting (4 - 6)
11:32	Timeout media			
11:32	15 REID E substitution out			
11:32	13 EASON T substitution in			
11:32				11 LYKES C substitution out
11:32				1 NOTAE J substitution in
11:32	4 DAYS D free throw 1 - 2 made (3)	<b>50-45</b>	<b>5</b>	
11:32	4 DAYS D free throw 2 - 2 missed			
11:31				10 WILLIAMS J defensive rebound (7)
11:25	5 WILKINSON M foul shooting (1 - 5)			5 TONEY A foul drawn (2)
11:25				5 TONEY A free throw fast break 1 - 2 missed
11:25				offensive dead ball rebound (2)
11:25		<b>50-46</b>	<b>4</b>	5 TONEY A free throw fast break 2 - 2 made (8)
11:06	2 GAINES E 2pt FG in the paint, jump shot missed			
11:03				10 WILLIAMS J defensive rebound (8)
10:57		<b>50-48</b>	<b>2</b>	1 NOTAE J 2pt FG in the paint, layup made (16)
10:44	13 EASON T foul drawn (4)			4 DAVIS D foul personal (3 - 7)
10:44	2 GAINES E substitution out			
10:44	11 WILLIAMS J substitution in			
10:44	13 EASON T 1&1 free throw 1 missed			
10:43				10 WILLIAMS J defensive rebound (9)
10:25	11 WILLIAMS J steal (1)			4 DAVIS D turnover bad pass (4)
10:10	5 WILKINSON M foul drawn (2)			1 NOTAE J foul personal (4 - 8)
10:10				1 NOTAE J substitution out
10:10				0 UMUDE S substitution in
10:10	5 WILKINSON M 1&1 free throw 1 made (1)	<b>51-48</b>	<b>3</b>	
10:10	5 WILKINSON M 1&1 free throw 2 made (2)	<b>52-48</b>	<b>4</b>	
09:45				4 DAVIS D 2pt FG in the paint, jump shot blocked
09:45	4 DAYS D block (1)			
09:41	3 FUDGE A defensive rebound (2)			
09:35	4 DAYS D 3pt FG , jump shot missed			
09:30	3 FUDGE A offensive rebound (3)			
09:30	3 FUDGE A 2pt FG second chance in the paint, layup missed			
09:29	offensive rebound (26)			
09:29	2 GAINES E substitution in			
09:29	5 WILKINSON M substitution out			



**Arkansas at LSU**

**Officials:** Tony Greene, Mike Nance, Rob Rorke

Game Time	LSU	Score	Diff	ARK
09:29				0 UMUDE S substitution out
09:29				11 LYKES C substitution in
09:26	13 EASON T foul drawn (5)			10 WILLIAMS J foul shooting (3 - 9)
09:26	13 EASON T free throw 1 - 2 made (10)	<b>53-48</b>	<b>5</b>	
09:26	13 EASON T free throw 2 - 2 made (11)	<b>54-48</b>	<b>6</b>	
09:05	3 FUDGE A steal (2)			4 DAVIS D turnover lost ball (5)
09:01	13 EASON T 2pt FG from turnover in the paint, dunk, made (13)	<b>56-48</b>	<b>8</b>	
09:01				Timeout 30 Sec
09:01				4 DAVIS D substitution out
09:01				1 NOTAE J substitution in
08:50				turnover 10 sec back court (17)
08:32	13 EASON T turnover bad pass (3)			10 WILLIAMS J steal (2)
08:25				11 LYKES C 2pt FG from turnover in the paint, jump shot missed
08:18				3 WADE T offensive rebound (2)
08:18				3 WADE T 2pt FG from turnover second chance in the paint, layup missed
08:17				10 WILLIAMS J offensive rebound (10)
08:15				10 WILLIAMS J 2pt FG from turnover second chance in the paint, jump shot missed
08:11	3 FUDGE A defensive rebound (4)			
07:45	4 DAYS D turnover bad pass (2)			10 WILLIAMS J steal (3)
07:40				11 LYKES C 2pt FG from turnover outside the paint, jump shot missed
07:37	11 WILLIAMS J defensive rebound (2)			
07:09	2 GAINES E 3pt FG , jump shot missed			
07:06				1 NOTAE J defensive rebound (3)
06:55		<b>56-50</b>	<b>6</b>	3 WADE T 2pt FG in the paint, layup made (2)
06:55				1 NOTAE J assist (2)
06:46	2 GAINES E foul offensive (3 - 6)			10 WILLIAMS J foul drawn (5)
06:46	2 GAINES E turnover offensive (3)			
06:46	Timeout media			
06:46	2 GAINES E substitution out			
06:46	3 FUDGE A substitution out			
06:46	13 EASON T substitution out			
06:46	0 MURRAY B substitution in			
06:46	5 WILKINSON M substitution in			
06:46	15 REID E substitution in			
06:46				3 WADE T substitution out
06:46				11 LYKES C substitution out
06:46				0 UMUDE S substitution in
06:46				4 DAVIS D substitution in
06:23				1 NOTAE J 2pt FG from turnover in the paint, jump shot missed
06:21	15 REID E defensive rebound (2)			
06:01	15 REID E 2pt FG in the paint, layup missed			
05:56				10 WILLIAMS J defensive rebound (11)
05:46				10 WILLIAMS J 3pt FG , jump shot missed
05:41	0 MURRAY B defensive rebound (1)			
05:31	4 DAYS D substitution out			
05:31	11 WILLIAMS J substitution out			
05:31	2 GAINES E substitution in			



**Arkansas at LSU**

**Officials:** Tony Greene, Mike Nance, Rob Rorke

Game Time	LSU	Score	Diff	ARK
05:31	13 EASON T substitution in			
05:20	0 MURRAY B 2pt FG in the paint, layup missed			
05:18				10 WILLIAMS J defensive rebound (12)
04:54		<b>56-53</b>	<b>3</b>	4 DAVIS D 3pt FG , jump shot made (7)
04:54				1 NOTAE J assist (3)
04:27	2 GAINES E turnover bad pass (4)			1 NOTAE J steal (1)
04:17				1 NOTAE J 3pt FG from turnover, jump shot missed
04:11				5 TONEY A offensive rebound (3)
04:11		<b>56-55</b>	<b>1</b>	5 TONEY A 2pt FG from turnover second chance in the paint, layup made (10)
03:57	13 EASON T 2pt FG in the paint, layup missed			
03:55				4 DAVIS D defensive rebound (8)
03:31		<b>56-58</b>	<b>-2</b>	1 NOTAE J 3pt FG , jump shot made (19)
03:22	Timeout 30 Sec			
03:22	5 WILKINSON M substitution out			
03:22	15 REID E substitution out			
03:22	3 FUDGE A substitution in			
03:22	4 DAYS D substitution in			
03:09	4 DAYS D 2pt FG outside the paint, jump shot missed			
03:05				0 UMUDE S defensive rebound (5)
02:40				1 NOTAE J 3pt FG , jump shot missed
02:35	13 EASON T defensive rebound (4)			
02:16	3 FUDGE A 2pt FG in the paint, dunk, made (13)	<b>58-58</b>	<b>0</b>	
01:45				Timeout 30 Sec
01:40				turnover shot clock (18)
01:29	2 GAINES E 2pt FG from turnover in the paint, layup missed			
01:25				defensive rebound (38)
01:12		<b>58-61</b>	<b>-3</b>	10 WILLIAMS J 3pt FG , jump shot made (11)
01:12				1 NOTAE J assist (4)
00:59	0 MURRAY B foul offensive (5 - 7)			10 WILLIAMS J foul drawn (6)
00:59	0 MURRAY B turnover offensive (3)			
00:59	0 MURRAY B substitution out			
00:59	5 WILKINSON M substitution in			
00:33	13 EASON T steal (3)			1 NOTAE J turnover lost ball (3)
00:27	5 WILKINSON M turnover lost ball (1)			5 TONEY A steal (1)
00:22	4 DAYS D foul personal (4 - 8)			1 NOTAE J foul drawn (4)
00:22				1 NOTAE J 1&1 free throw 1 missed
00:22				0 UMUDE S offensive rebound (6)
00:22		<b>58-63</b>	<b>-5</b>	0 UMUDE S 2pt FG from turnover second chance in the paint, layup made (8)
00:15	13 EASON T 3pt FG , jump shot missed			
00:13				5 TONEY A defensive rebound (4)
00:11	4 DAYS D foul personal (5 - 9)			5 TONEY A foul drawn (3)
00:11	4 DAYS D substitution out			
00:11	11 WILLIAMS J substitution in			
00:11		<b>58-64</b>	<b>-6</b>	5 TONEY A 1&1 free throw 1 made (11)
00:11		<b>58-65</b>	<b>-7</b>	5 TONEY A 1&1 free throw 2 made (12)
00:06	2 GAINES E 3pt FG , jump shot missed			
00:03				10 WILLIAMS J defensive rebound (13)

END OF GAME



Official Basketball Play by Play - Second Half

### Arkansas at LSU

01/15/22 Maravich Assembly Center, Baton Rouge  
2021-22 Men's Basketball

**Game Time:** 1:00 PM

**Game Duration:** 2:16

**Attendance:** 12,734

**Officials:** Tony Greene, Mike Nance, Rob Rorke

Game Time	LSU	Score	Diff	ARK
LSU 58-65 ARK				



**Arkansas at LSU**

01/15/22 Maravich Assembly Center, Baton Rouge  
2021-22 Men's Basketball

Game Time: 1:00 PM  
Game Duration: 2:16  
Attendance: 12,734

Officials: Tony Greene, Mike Nance, Rob Rorke

**Arkansas - 34**

NO.	Name	F	Min	FG			Rebounds			Fouls		TP	AS	TO	ST	Blocks		+/-
				M-A	M-A	M-A	OR	DR	TOT	PF	FD					BS	BA	
3	Trey Wade	F	08:21	1-2	0-0	0-0	1	0	1	1	0	2	0	0	0	0	0	-4
10	Jaylin Williams	F	20:00	2-5	1-2	1-1	1	8	9	1	4	6	1	0	2	1	0	9
0	Stanley Umude	G	13:36	2-2	1-1	0-0	1	2	3	1	0	5	0	0	0	0	0	12
1	JD Notae	G	13:47	4-7	2-4	0-1	0	1	1	2	1	10	3	1	1	0	0	17
5	Au'Diese Toney	G	20:00	1-4	0-1	4-6	1	1	2	0	3	6	0	1	1	0	1	9
4	Davonte Davis		16:29	2-5	1-1	0-0	1	2	3	2	0	5	1	3	0	0	1	6
2	Khalen Robinson		01:25	0-0	0-0	0-0	0	0	0	0	0	0	0	1	0	0	0	0
11	Chris Lykes		06:22	0-3	0-0	0-0	0	0	0	2	1	0	0	1	0	0	0	-4
Team							1	1	2			0		2				
<b>Totals</b>				12-28	5-9	5-8	6	15	21	9	9	34	5	9	4	1	2	9

Shooting By Period		
2 <sup>nd</sup> FG%	12-28	42.9%
3PT%	5-9	55.6%
FT%	5-8	62.5%
GM FG%	12-28	42.9%
3PT%	5-9	55.6%
FT%	5-8	62.5%

Dead Ball Rebounds: 2, 0

Technical Fouls::NONE

**LSU - 25**

NO.	Name	F	Min	FG			Rebounds			Fouls		TP	AS	TO	ST	Blocks		+/-
				M-A	M-A	M-A	OR	DR	TOT	PF	FD					BS	BA	
4	Darius Days	F	15:37	1-4	0-2	1-2	0	1	1	3	2	3	1	1	1	1	0	0
5	Mwani Wilkinson	F	12:25	0-0	0-0	2-2	0	0	0	1	1	2	0	1	0	1	0	-8
15	Efton Reid	C	10:01	1-3	1-1	0-0	0	1	1	0	0	3	0	0	0	0	0	-5
0	Brandon Murray	G	10:11	0-2	0-1	0-0	0	1	1	2	0	0	1	2	0	0	0	-9
2	Eric Gaines	G	17:17	3-7	1-3	0-2	1	2	3	3	2	7	1	3	2	0	0	-11
24	Shareef O'Neal		00:00	0-0	0-0	0-0	0	0	0	0	0	0	0	0	0	0	0	0
3	Alex Fudge		13:12	2-3	0-0	0-0	1	3	4	0	0	4	0	0	2	0	0	-1
13	Tari Eason		14:10	1-4	0-2	4-5	1	2	3	0	4	6	0	2	1	0	0	-11
11	Justice Williams		07:07	0-2	0-0	0-0	0	1	1	0	0	0	0	0	1	0	1	0
Team							2	0	2			0		0				
<b>Totals</b>				8-25	2-9	7-11	5	11	16	9	9	25	3	9	7	2	1	-9

Shooting By Period		
2 <sup>nd</sup> FG%	8-25	32.0%
3PT%	2-9	22.2%
FT%	7-11	63.6%
GM FG%	8-25	32.0%
3PT%	2-9	22.2%
FT%	7-11	63.6%

Dead Ball Rebounds: 1, 0

Technical Fouls::NONE

	ARK	LSU
Biggest lead	7 (2 <sup>nd</sup> 0:11)	8 (2 <sup>nd</sup> 9:01)
Best Scoring Run	10(2 <sup>nd</sup> 3:31)	6(2 <sup>nd</sup> 17:10)
Lead Changes	3	
Times Tied	3	
Time with Lead	02:41	15:08

	ARK	LSU
Points from		
Turnovers	7	6
Paint	14	12
Second Chance	6	6
Fast Breaks	4	2
Bench	5	10

	Period by Period Scoring		
	1st	2nd	TOT
ARK	31	34	65
LSU	33	25	58



**Arkansas at LSU**

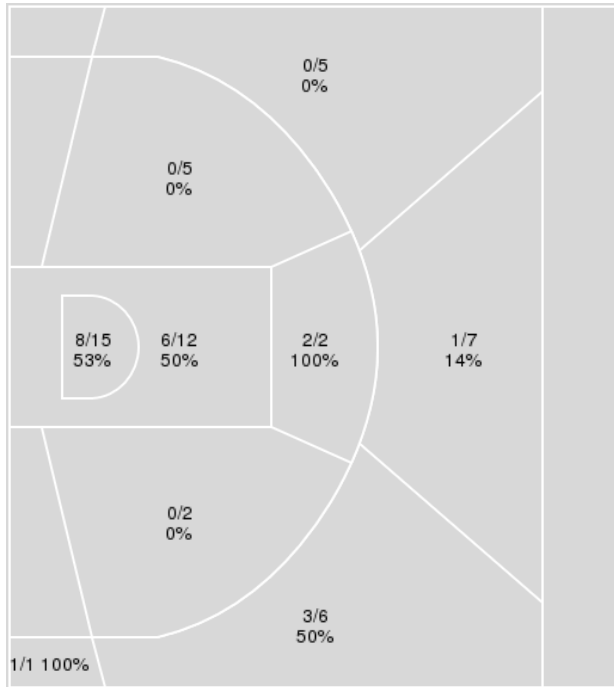
01/15/22 Maravich Assembly Center, Baton Rouge  
2021-22 Men's Basketball

**Game Time:** 1:00 PM  
**Game Duration:** 2:16  
**Attendance:** 12,734

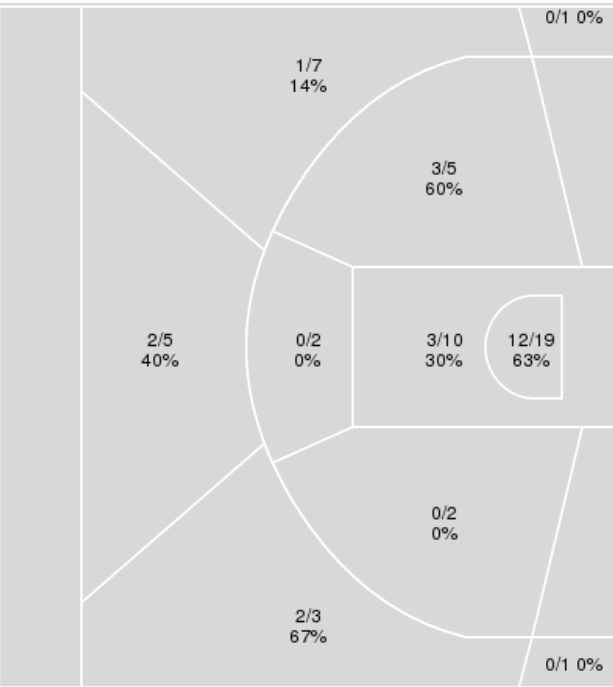
**Officials:** Tony Greene, Mike Nance, Rob Rorke

{ Players => 0, 1, 2, 3, 4, 5, 10, 11, 13, 15, 20, 21, 22, 24, 25, 30, 44; } { Players => All; } FG Types => All; Results => All;  
FG Types => All; Results => All;

**LSU**



**Arkansas**



LSU	M/A	%
Field Goals	21/55	38
2 Points	16/36	44
3 Points	5/19	26
Free Throws	11/17	65

Arkansas	M/A	%
Field Goals	23/55	42
2 Points	18/38	47
3 Points	5/17	29
Free Throws	14/18	78





## Arkansas at LSU

01/15/22 Maravich Assembly Center, Baton Rouge  
2021-22 Men's Basketball

Game Time: 1:00 PM

Game Duration: 2:16

Attendance: 12,734

Officials: Tony Greene, Mike Nance, Rob Rorke

## Arkansas

No	Name	Mins		Score		Points Diff		Points per Min		Assists		Rebounds		Steals		Turnovers	
		On	Off	On	Off	On	Off	On	Off	On	Off	On	Off	On	Off	On	Off
0	Stanley Umude	24:09	15:51	40 - 34	25 - 24	6	1	1.66	1.58	6	2	26	15	3	4	12	7
1	JD Notae	26:41	13:19	50 - 32	15 - 26	18	-11	1.87	1.13	6	2	27	14	6	1	10	9
2	Khalen Robinson	01:25	38:35	2 - 2	63 - 56	0	7	1.41	1.63	1	7	2	39	0	7	3	16
3	Trey Wade	20:02	19:58	23 - 35	42 - 23	-12	19	1.15	2.10	3	5	17	24	3	4	9	10
4	Davonte Davis	32:37	07:23	56 - 49	9 - 9	7	0	1.72	1.22	6	2	34	7	5	2	15	4
5	Au'Diese Toney	38:40	01:20	60 - 56	5 - 2	4	3	1.55	3.75	7	1	40	1	6	1	19	0
10	Jaylin Williams	33:53	06:07	57 - 48	8 - 10	9	-2	1.68	1.31	8	0	33	8	7	0	17	2
11	Chris Lykes	21:16	18:44	35 - 34	30 - 24	1	6	1.65	1.60	3	5	22	19	5	2	9	10
23	Connor Vanover	01:17	38:43	2 - 0	63 - 58	2	5	1.56	1.63	0	8	4	37	0	7	1	18

## LSU

No	Name	Mins		Score		Points Diff		Points per Min		Assists		Rebounds		Steals		Turnovers	
		On	Off	On	Off	On	Off	On	Off	On	Off	On	Off	On	Off	On	Off
0	Brandon Murray	19:50	20:10	23 - 28	35 - 37	-5	-2	1.16	1.74	6	5	13	18	5	9	6	10
2	Eric Gaines	36:39	03:21	56 - 65	2 - 0	-9	2	1.53	0.60	11	0	26	5	13	1	14	2
3	Alex Fudge	23:18	16:42	33 - 38	25 - 27	-5	-2	1.42	1.50	4	7	18	13	10	4	14	2
4	Darius Days	30:16	09:44	47 - 43	11 - 22	4	-11	1.55	1.13	9	2	25	6	13	1	10	6
5	Mwani Wilkinson	24:12	15:48	36 - 42	22 - 23	-6	-1	1.49	1.39	9	2	20	11	8	6	4	12
11	Justice Williams	17:05	22:55	26 - 26	32 - 39	0	-7	1.52	1.40	3	8	16	15	6	8	10	6
13	Tari Eason	25:56	14:04	39 - 50	19 - 15	-11	4	1.50	1.35	6	5	17	14	10	4	15	1
15	Efton Reid	14:59	25:01	20 - 23	38 - 42	-3	-4	1.33	1.52	5	6	11	20	4	10	5	11
24	Shareef O'Neal	07:45	32:15	10 - 10	48 - 55	0	-7	1.29	1.49	2	9	9	22	1	13	2	14



**Arkansas at LSU**

01/15/22 Maravich Assembly Center, Baton Rouge  
2021-22 Men's Basketball

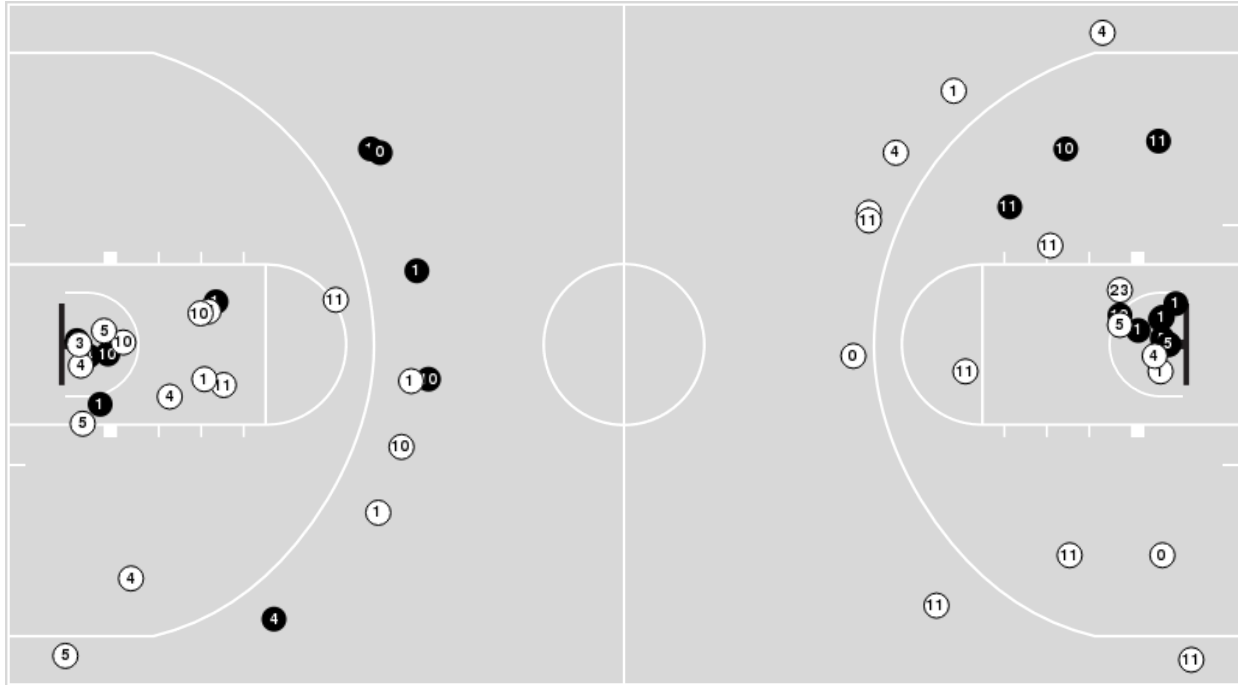
**Game Time:** 1:00 PM  
**Game Duration:** 2:16  
**Attendance:** 12,734

**Officials:** Tony Greene, Mike Nance, Rob Rorke

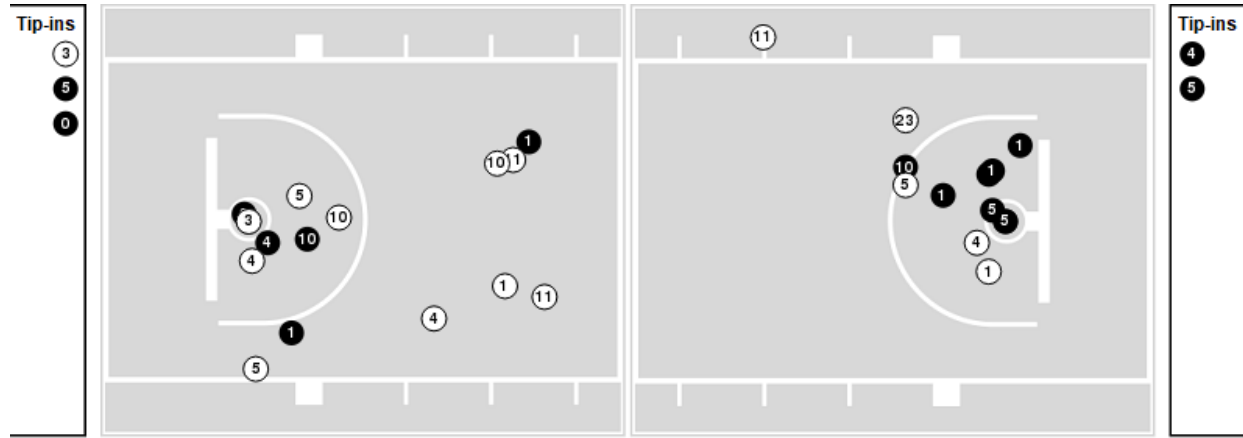
Players => AllFG Types=>AllResults=>All

**Arkansas**

**All Field Goals**



**Blow Up Chart**



● Made    ○ Missed    N - Player Number

Arkansas	M/A	%
Field Goals	23/55	42
2 Points	18/38	47
3 Points	5/17	29
Free Throws	14/18	78

Arkansas	M/A	%
Points in the Paint	30 (15 / 29)	52
Fast Break Points	10 (8/9)	89
Second Chance Points	13 (7/11)	64
Effective FG%	46	



**Arkansas at LSU**

01/15/22 Maravich Assembly Center, Baton Rouge  
2021-22 Men's Basketball

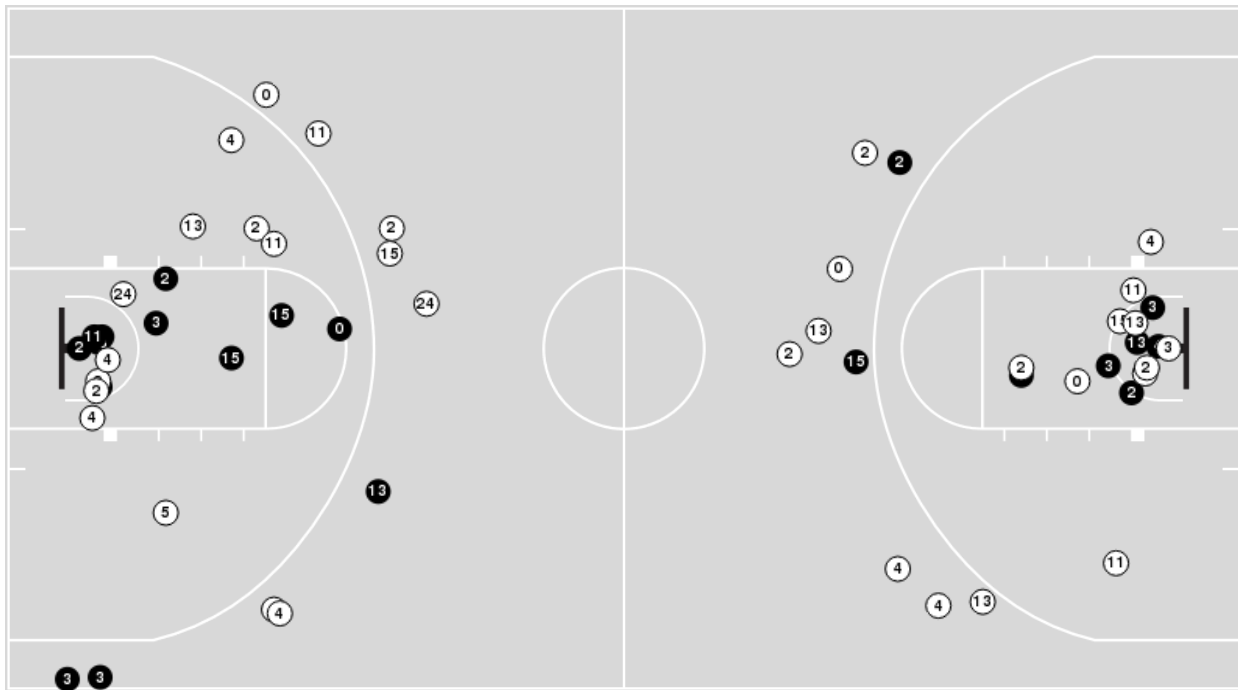
**Game Time:** 1:00 PM  
**Game Duration:** 2:16  
**Attendance:** 12,734

**Officials:** Tony Greene, Mike Nance, Rob Rorke

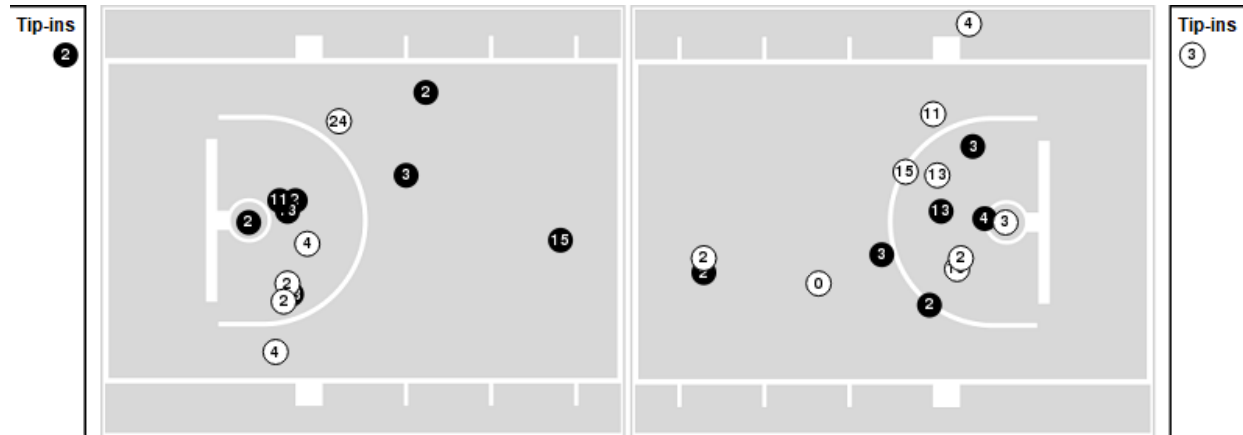
Players => 0, 1, 2, 3, 4, 5, 10, 11, 13, 15, 20, 21, 22, 24, 25, 30, 44FG Types=>AllResults=>All

**LSU**

**All Field Goals**



**Blow Up Chart**



● Made    ○ Missed    N - Player Number

LSU	M/A	%
Field Goals	21/55	38
2 Points	16/36	44
3 Points	5/19	26
Free Throws	11/17	65

LSU	M/A	%
Points in the Paint	28 (14 / 27)	52
Fast Break Points	5 (3/4)	75
Second Chance Points	10 (7/11)	64
Effective FG%	43	



**Arkansas at LSU**

01/15/22 Maravich Assembly Center, Baton Rouge  
2021-22 Men's Basketball

**Game Time:** 1:00 PM  
**Game Duration:** 2:16  
**Attendance:** 12,734

**Officials:** Tony Greene, Mike Nance, Rob Rorke

**Arkansas**

Lineup	Quarter On	Time On	Quarter Off	Time Off	Time on Court	Score	Score Diff	Reb	Stl	Tov	Ass	PPP
0- Umude S/ 1- Notae J/ 3- Wade T/ 5- Toney A/ 10- Williams J/	1	20:00	1	16:44	03:16	2-6	-4	3	0	3	1	0.4000
1- Notae J/ 3- Wade T/ 4- Davis D/ 5- Toney A/ 10- Williams J/	1	16:44	1	14:54	01:50	0-3	-3	1	0	1	0	0.0000
1- Notae J/ 3- Wade T/ 4- Davis D/ 10- Williams J/ 11- Lykes C/	1	14:54	1	13:34	01:20	5-2	3	1	1	0	1	1.4535
1- Notae J/ 4- Davis D/ 5- Toney A/ 10- Williams J/ 11- Lykes C/	1	13:34	1	11:32	02:02	7-5	2	2	1	1	0	1.5766
1- Notae J/ 3- Wade T/ 4- Davis D/ 5- Toney A/ 11- Lykes C/	1	11:32	1	09:10	02:22	2-2	0	2	0	0	0	0.6667
1- Notae J/ 4- Davis D/ 5- Toney A/ 10- Williams J/ 11- Lykes C/	1	09:10	1	07:17	01:53	4-2	2	1	0	0	0	1.3333
0- Umude S/ 4- Davis D/ 5- Toney A/ 10- Williams J/ 11- Lykes C/	1	07:17	1	04:11	03:06	4-4	0	3	0	2	1	0.8197
0- Umude S/ 4- Davis D/ 5- Toney A/ 11- Lykes C/ 23- Vanover C/	1	04:11	1	03:19	00:52	2-0	2	4	0	1	0	1.0000
0- Umude S/ 3- Wade T/ 4- Davis D/ 5- Toney A/ 11- Lykes C/	1	03:19	1	00:50	02:28	3-8	-5	2	0	1	0	0.7979
1- Notae J/ 4- Davis D/ 5- Toney A/ 10- Williams J/ 11- Lykes C/	1	00:50	1	00:50	00:00	0-0	0	0	0	1	0	0.0000
0- Umude S/ 4- Davis D/ 5- Toney A/ 10- Williams J/ 11- Lykes C/	1	00:50	1	00:35	00:15	0-0	0	0	1	0	0	0.0000
0- Umude S/ 1- Notae J/ 5- Toney A/ 10- Williams J/ 11- Lykes C/	1	00:35	1	00:35	00:00	1-0	1	0	0	0	0	2.2727
0- Umude S/ 1- Notae J/ 3- Wade T/ 5- Toney A/ 11- Lykes C/	1	00:35	1	00:35	00:00	1-0	1	0	0	0	0	2.2727
0- Umude S/ 3- Wade T/ 5- Toney A/ 11- Lykes C/ 23- Vanover C/	1	00:35	1	00:11	00:25	0-0	0	0	0	0	0	0.0000
0- Umude S/ 1- Notae J/ 5- Toney A/ 11- Lykes C/ 23- Vanover C/	1	00:11	1	00:11	00:00	0-0	0	0	0	0	0	0.0000
0- Umude S/ 1- Notae J/ 5- Toney A/ 10- Williams J/ 11- Lykes C/	1	00:11	2	20:00	00:11	0-1	-1	1	0	0	0	0.0000
0- Umude S/ 1- Notae J/ 3- Wade T/ 5- Toney A/ 10- Williams J/	2	20:00	2	18:44	01:16	3-2	1	0	0	0	0	1.5000
0- Umude S/ 1- Notae J/ 4- Davis D/ 5- Toney A/ 10- Williams J/	2	18:44	2	16:36	02:08	5-6	-1	1	0	0	1	1.6667
0- Umude S/ 2- Robinson K/ 4- Davis D/ 5- Toney A/ 10- Williams J/	2	16:36	2	15:11	01:25	2-2	0	2	0	3	1	0.5000
0- Umude S/ 4- Davis D/ 5- Toney A/ 10- Williams J/ 11- Lykes C/	2	15:11	2	13:51	01:20	2-1	1	1	0	0	0	0.8621
3- Wade T/ 4- Davis D/ 5- Toney A/ 10- Williams J/ 11- Lykes C/	2	13:51	2	11:32	02:19	2-5	-3	2	0	1	0	0.5000
1- Notae J/ 3- Wade T/ 4- Davis D/ 5- Toney A/ 10- Williams J/	2	11:32	2	10:10	01:22	3-1	2	3	0	1	0	1.0417
0- Umude S/ 3- Wade T/ 4- Davis D/ 5- Toney A/ 10- Williams J/	2	10:10	2	09:29	00:41	0-2	-2	0	0	0	0	0.0000
3- Wade T/ 4- Davis D/ 5- Toney A/ 10- Williams J/ 11- Lykes C/	2	09:29	2	09:01	00:28	0-4	-4	0	0	1	0	0.0000
1- Notae J/ 3- Wade T/ 5- Toney A/ 10- Williams J/ 11- Lykes C/	2	09:01	2	06:46	02:15	2-0	2	3	2	1	1	0.5000
0- Umude S/ 1- Notae J/ 4- Davis D/ 5- Toney A/ 10- Williams J/	2	06:46	2	00:00	06:46	15-2	13	9	2	2	2	1.4535



**Arkansas at LSU**

01/15/22 Maravich Assembly Center, Baton Rouge  
2021-22 Men's Basketball

**Game Time:** 1:00 PM  
**Game Duration:** 2:16  
**Attendance:** 12,734

**Officials:** Tony Greene, Mike Nance, Rob Rorke

**LSU**

Lineup	Quarter On	Time On	Quarter Off	Time Off	Time on Court	Score	Score Diff	Reb	Stl	Tov	Ass	PPP
0- Murray B/ 2- Gaines E/ 4- Days D/ 5- Wilkinson M/ 15- Reid E/	1	20:00	1	16:09	03:51	6-2	4	2	3	0	2	1.0000
0- Murray B/ 2- Gaines E/ 4- Days D/ 5- Wilkinson M/ 13- Eason T/	1	16:09	1	15:32	00:37	3-0	3	1	0	0	1	3.0000
0- Murray B/ 3- Fudge A/ 4- Days D/ 11- Williams J/ 13- Eason T/	1	15:32	1	14:54	00:38	0-0	0	0	0	1	0	0.0000
2- Gaines E/ 3- Fudge A/ 4- Days D/ 11- Williams J/ 13- Eason T/	1	14:54	1	13:34	01:20	2-5	-3	1	0	1	0	1.0000
2- Gaines E/ 3- Fudge A/ 11- Williams J/ 13- Eason T/ 15- Reid E/	1	13:34	1	13:17	00:17	0-0	0	0	0	1	0	0.0000
2- Gaines E/ 3- Fudge A/ 4- Days D/ 11- Williams J/ 13- Eason T/	1	13:17	1	12:33	00:44	3-2	1	0	0	0	0	3.0000
2- Gaines E/ 3- Fudge A/ 4- Days D/ 5- Wilkinson M/ 13- Eason T/	1	12:33	1	11:32	01:01	2-4	-2	0	1	0	1	1.0000
0- Murray B/ 2- Gaines E/ 4- Days D/ 5- Wilkinson M/ 24- O'Neal S/	1	11:32	1	09:10	02:22	2-3	-1	3	0	1	0	0.5000
0- Murray B/ 2- Gaines E/ 5- Wilkinson M/ 13- Eason T/ 24- O'Neal S/	1	09:10	1	07:56	01:14	2-2	0	2	0	0	1	2.0000
0- Murray B/ 2- Gaines E/ 5- Wilkinson M/ 13- Eason T/ 15- Reid E/	1	07:56	1	07:17	00:39	0-2	-2	0	0	0	0	0.0000
0- Murray B/ 2- Gaines E/ 3- Fudge A/ 13- Eason T/ 15- Reid E/	1	07:17	1	07:06	00:11	0-0	0	0	0	1	0	0.0000
0- Murray B/ 2- Gaines E/ 3- Fudge A/ 4- Days D/ 13- Eason T/	1	07:06	1	06:59	00:07	0-0	0	0	0	0	0	0.0000
2- Gaines E/ 3- Fudge A/ 4- Days D/ 11- Williams J/ 13- Eason T/	1	06:59	1	05:20	01:39	3-4	-1	1	1	1	1	1.0000
2- Gaines E/ 3- Fudge A/ 4- Days D/ 11- Williams J/ 24- O'Neal S/	1	05:20	1	04:11	01:09	1-0	1	2	1	0	0	0.6944
2- Gaines E/ 3- Fudge A/ 5- Wilkinson M/ 11- Williams J/ 24- O'Neal S/	1	04:11	1	03:19	00:52	0-2	-2	0	0	0	0	0.0000
2- Gaines E/ 4- Days D/ 5- Wilkinson M/ 11- Williams J/ 13- Eason T/	1	03:19	1	02:08	01:11	4-2	2	1	1	0	1	1.3889
2- Gaines E/ 4- Days D/ 11- Williams J/ 13- Eason T/ 24- O'Neal S/	1	02:08	1	02:08	00:00	0-0	0	0	0	0	0	0.0000
2- Gaines E/ 3- Fudge A/ 11- Williams J/ 13- Eason T/ 24- O'Neal S/	1	02:08	2	20:00	02:08	5-3	2	2	0	1	1	1.2887
0- Murray B/ 2- Gaines E/ 4- Days D/ 5- Wilkinson M/ 15- Reid E/	2	20:00	2	16:36	03:24	8-8	0	2	0	0	2	1.8018
0- Murray B/ 2- Gaines E/ 3- Fudge A/ 4- Days D/ 13- Eason T/	2	16:36	2	15:49	00:47	0-0	0	0	2	0	0	0.0000
0- Murray B/ 3- Fudge A/ 4- Days D/ 11- Williams J/ 13- Eason T/	2	15:49	2	15:36	00:13	0-0	0	0	0	1	0	0.0000
2- Gaines E/ 3- Fudge A/ 4- Days D/ 11- Williams J/ 13- Eason T/	2	15:36	2	14:45	00:51	2-3	-1	1	1	0	0	2.0000
2- Gaines E/ 3- Fudge A/ 11- Williams J/ 13- Eason T/ 15- Reid E/	2	14:45	2	14:07	00:38	0-1	-1	1	0	1	0	0.0000
2- Gaines E/ 3- Fudge A/ 5- Wilkinson M/ 13- Eason T/ 15- Reid E/	2	14:07	2	12:43	01:24	4-2	2	1	1	1	0	1.3889
2- Gaines E/ 3- Fudge A/ 4- Days D/ 5- Wilkinson M/ 15- Reid E/	2	12:43	2	11:32	01:11	2-0	2	3	0	0	1	2.0000
2- Gaines E/ 3- Fudge A/ 4- Days D/ 5- Wilkinson M/ 13- Eason T/	2	11:32	2	10:44	00:48	1-3	-2	0	0	0	0	0.5319
3- Fudge A/ 4- Days D/ 5- Wilkinson M/ 11- Williams J/ 13- Eason T/	2	10:44	2	09:29	01:15	2-0	2	3	1	0	0	1.5152
2- Gaines E/ 3- Fudge A/ 4- Days D/ 11- Williams J/ 13- Eason T/	2	09:29	2	06:46	02:43	4-2	2	2	1	3	0	0.6803
0- Murray B/ 4- Days D/ 5- Wilkinson M/ 11- Williams J/ 15- Reid E/	2	06:46	2	05:31	01:15	0-0	0	2	0	0	0	0.0000
0- Murray B/ 2- Gaines E/ 5- Wilkinson M/ 13- Eason T/ 15- Reid E/	2	05:31	2	03:22	02:09	0-8	-8	0	0	1	0	0.0000
0- Murray B/ 2- Gaines E/ 3- Fudge A/ 4- Days D/ 13- Eason T/	2	03:22	2	00:59	02:23	2-3	-1	1	0	1	0	0.5000
2- Gaines E/ 3- Fudge A/ 4- Days D/ 5- Wilkinson M/ 13- Eason T/	2	00:59	2	00:11	00:47	0-2	-2	0	1	1	0	0.0000
2- Gaines E/ 3- Fudge A/ 5- Wilkinson M/ 11- Williams J/ 13- Eason T/	2	00:11	2	00:00	00:12	0-2	-2	0	0	0	0	0.0000



**Officials:** Tony Greene, Mike Nance, Rob Rorke

**Arkansas**

Lineup	Time	Score	Score Diff	Pts/Min	Reb	Stl	Tov	Ass	PPP
0- Umude S/ 1- Notae J/ 4- Davis D/ 5- Toney A/ 10- Williams J/	08:54	20-8	12	2.2472	10	2	2	3	1.5015
0- Umude S/ 4- Davis D/ 5- Toney A/ 10- Williams J/ 11- Lykes C/	04:41	6-5	1	1.2811	4	1	2	1	0.8333
0- Umude S/ 1- Notae J/ 3- Wade T/ 5- Toney A/ 10- Williams J/	04:32	5-8	-3	1.1029	3	0	3	1	0.7143
1- Notae J/ 4- Davis D/ 5- Toney A/ 10- Williams J/ 11- Lykes C/	03:55	11-7	4	2.8085	3	1	2	0	1.3033
1- Notae J/ 3- Wade T/ 4- Davis D/ 5- Toney A/ 10- Williams J/	03:12	3-4	-1	0.9375	4	0	2	0	0.6148
3- Wade T/ 4- Davis D/ 5- Toney A/ 10- Williams J/ 11- Lykes C/	02:47	2-9	-7	0.7186	2	0	2	0	0.4000
0- Umude S/ 3- Wade T/ 4- Davis D/ 5- Toney A/ 11- Lykes C/	02:28	3-8	-5	1.2162	2	0	1	0	0.7979
1- Notae J/ 3- Wade T/ 4- Davis D/ 5- Toney A/ 11- Lykes C/	02:22	2-2	0	0.8451	2	0	0	0	0.6667
1- Notae J/ 3- Wade T/ 5- Toney A/ 10- Williams J/ 11- Lykes C/	02:15	2-0	2	0.8889	3	2	1	1	0.5000
0- Umude S/ 2- Robinson K/ 4- Davis D/ 5- Toney A/ 10- Williams J/	01:25	2-2	0	1.4118	2	0	3	1	0.5000
1- Notae J/ 3- Wade T/ 4- Davis D/ 10- Williams J/ 11- Lykes C/	01:20	5-2	3	3.7500	1	1	0	1	1.4535
0- Umude S/ 4- Davis D/ 5- Toney A/ 11- Lykes C/ 23- Vanover C/	00:52	2-0	2	2.3077	4	0	1	0	1.0000
0- Umude S/ 3- Wade T/ 4- Davis D/ 5- Toney A/ 10- Williams J/	00:41	0-2	-2	0.0000	0	0	0	0	0.0000
0- Umude S/ 3- Wade T/ 5- Toney A/ 11- Lykes C/ 23- Vanover C/	00:25	0-0	0	0.0000	0	0	0	0	0.0000
0- Umude S/ 1- Notae J/ 5- Toney A/ 10- Williams J/ 11- Lykes C/	00:11	1-1	0	5.4545	1	0	0	0	0.6944
0- Umude S/ 1- Notae J/ 3- Wade T/ 5- Toney A/ 11- Lykes C/	00:00	1-0	1	∞	0	0	0	0	2.2727
0- Umude S/ 1- Notae J/ 5- Toney A/ 11- Lykes C/ 23- Vanover C/	00:00	0-0	0	NaN	0	0	0	0	0.0000



**Officials:** Tony Greene, Mike Nance, Rob Rorke

**LSU**

Lineup	Time	Score	Score Diff	Pts/Min	Reb	Stl	Tov	Ass	PPP
2- Gaines E/ 3- Fudge A/ 4- Days D/ 11- Williams J/ 13- Eason T/	07:17	14-16	-2	1.9222	5	3	5	1	1.0870
0- Murray B/ 2- Gaines E/ 4- Days D/ 5- Wilkinson M/ 15- Reid E/	07:15	14-10	4	1.9310	4	3	0	4	1.3410
0- Murray B/ 2- Gaines E/ 3- Fudge A/ 4- Days D/ 13- Eason T/	03:17	2-3	-1	0.6091	1	2	1	0	0.3676
0- Murray B/ 2- Gaines E/ 5- Wilkinson M/ 13- Eason T/ 15- Reid E/	02:48	0-10	-10	0.0000	0	0	1	0	0.0000
2- Gaines E/ 3- Fudge A/ 4- Days D/ 5- Wilkinson M/ 13- Eason T/	02:36	3-9	-6	1.1538	0	2	1	1	0.5102
0- Murray B/ 2- Gaines E/ 4- Days D/ 5- Wilkinson M/ 24- O'Neal S/	02:22	2-3	-1	0.8451	3	0	1	0	0.5000
2- Gaines E/ 3- Fudge A/ 11- Williams J/ 13- Eason T/ 24- O'Neal S/	02:08	5-3	2	2.3438	2	0	1	1	1.2887
2- Gaines E/ 3- Fudge A/ 5- Wilkinson M/ 13- Eason T/ 15- Reid E/	01:24	4-2	2	2.8571	1	1	1	0	1.3889
3- Fudge A/ 4- Days D/ 5- Wilkinson M/ 11- Williams J/ 13- Eason T/	01:15	2-0	2	1.6000	3	1	0	0	1.5152
0- Murray B/ 4- Days D/ 5- Wilkinson M/ 11- Williams J/ 15- Reid E/	01:15	0-0	0	0.0000	2	0	0	0	0.0000
0- Murray B/ 2- Gaines E/ 5- Wilkinson M/ 13- Eason T/ 24- O'Neal S/	01:14	2-2	0	1.6216	2	0	0	1	2.0000
2- Gaines E/ 4- Days D/ 5- Wilkinson M/ 11- Williams J/ 13- Eason T/	01:11	4-2	2	3.3803	1	1	0	1	1.3889
2- Gaines E/ 3- Fudge A/ 4- Days D/ 5- Wilkinson M/ 15- Reid E/	01:11	2-0	2	1.6901	3	0	0	1	2.0000
2- Gaines E/ 3- Fudge A/ 4- Days D/ 11- Williams J/ 24- O'Neal S/	01:09	1-0	1	0.8696	2	1	0	0	0.6944
2- Gaines E/ 3- Fudge A/ 11- Williams J/ 13- Eason T/ 15- Reid E/	00:55	0-1	-1	0.0000	1	0	2	0	0.0000
2- Gaines E/ 3- Fudge A/ 5- Wilkinson M/ 11- Williams J/ 24- O'Neal S/	00:52	0-2	-2	0.0000	0	0	0	0	0.0000
0- Murray B/ 3- Fudge A/ 4- Days D/ 11- Williams J/ 13- Eason T/	00:51	0-0	0	0.0000	0	0	2	0	0.0000
0- Murray B/ 2- Gaines E/ 4- Days D/ 5- Wilkinson M/ 13- Eason T/	00:37	3-0	3	4.8649	1	0	0	1	3.0000
2- Gaines E/ 3- Fudge A/ 5- Wilkinson M/ 11- Williams J/ 13- Eason T/	00:12	0-2	-2	0.0000	0	0	0	0	0.0000
0- Murray B/ 2- Gaines E/ 3- Fudge A/ 13- Eason T/ 15- Reid E/	00:11	0-0	0	0.0000	0	0	1	0	0.0000
2- Gaines E/ 4- Days D/ 11- Williams J/ 13- Eason T/ 24- O'Neal S/	00:00	0-0	0	NaN	0	0	0	0	0.0000