



Kentucky at LSU

01/04/22 Maravich Assembly Center, Baton Rouge
2021-22 Men's Basketball

Game Time: 6:00 PM
Game Duration: 2:14
Attendance: 11,808

Officials: Joe Lindsay, Mike Nance, Chuck Jones

Kentucky - 60

Record: 11-3 (1-1)

NO.	Name	F	Min	FG		3P		FT		Rebounds			Fouls		TP	AS	TO	ST	Blocks		+/-
				M-A	M-A	M-A	OR	DR	TOT	PF	FD	BS	BA								
12	Keion Brooks Jr.	F	14:16	0-3	0-1	2-2	1	2	3	1	3	2	0	0	0	0	0	0	1	1	-12
34	Oscar Tshiebwe	F	28:37	4-9	0-0	0-3	4	9	13	2	4	8	0	2	2	1	1	1	1	-4	
2	Sahvir Wheeler	G	03:53	0-1	0-0	0-0	0	1	1	0	0	0	1	1	0	0	0	0	0	-5	
3	TyTy Washington Jr.	G	32:48	2-9	1-3	0-0	2	4	6	2	2	5	4	2	1	1	1	1	1		
31	Kellan Grady	G	39:13	4-13	4-12	1-2	0	1	1	1	3	13	2	2	2	0	1	1	-4		
0	Jacob Toppin		27:16	6-9	0-0	2-3	2	6	8	2	3	14	2	0	2	1	0	5			
10	Davion Mintz		28:06	4-12	3-8	5-6	0	0	0	1	3	16	2	4	0	1	0	6			
23	Bryce Hopkins		02:11	0-1	0-0	0-0	1	0	1	1	0	0	0	0	2	0	0	1	-2		
55	Lance Ware		12:19	1-1	0-0	0-4	0	3	3	2	2	2	0	2	1	0	0	4			
4	Daimion Collins		08:13	0-0	0-0	0-0	0	0	0	1	0	0	0	0	0	0	1	0	-10		
11	Dontaie Allen		03:08	0-0	0-0	0-0	0	0	0	2	0	0	0	0	0	0	0	0	-4		
Team							1	2	3			0			0						
Totals				21-58	8-24	10-20	11	28	39	15	20	60	11	15	8	6	5	-5			

Shooting By Period		
1st FG%	12-36	33.3%
3PT%	1-11	9.1%
FT%	5-11	45.5%
2nd FG%	9-22	40.9%
3PT%	7-13	53.8%
FT%	5-9	55.6%
GM FG%	21-58	36.2%
3PT%	8-24	33.3%
FT%	10-20	50.0%

Dead Ball Rebounds: 4, 0

Technical Fouls::NONE

LSU - 65

Record: 13-1 (1-1)

NO.	Name	F	Min	FG		3P		FT		Rebounds			Fouls		TP	AS	TO	ST	Blocks		+/-
				M-A	M-A	M-A	OR	DR	TOT	PF	FD	BS	BA								
4	Darius Days	F	29:06	3-12	3-11	0-0	0	7	7	2	0	9	2	1	0	0	0	0	0	1	
5	Mwani Wilkinson	F	27:05	0-3	0-2	0-0	1	5	6	2	1	0	1	1	2	0	0	0	-4		
15	Efton Reid	C	17:13	2-5	1-1	1-2	0	4	4	3	2	6	0	1	1	3	0	-5			
0	Brandon Murray	G	30:41	4-7	2-3	0-0	0	3	3	5	0	10	1	3	1	0	1	8			
1	Xavier Pinson	G	27:57	5-11	1-3	0-2	1	3	4	1	2	11	4	4	3	0	2	1			
2	Eric Gaines		21:58	3-6	2-2	0-0	0	2	2	3	1	8	3	3	4	0	2	14			
13	Tari Eason		29:30	4-9	0-1	5-7	2	4	6	2	6	13	3	2	0	1	1	7			
3	Alex Fudge		10:52	2-2	0-0	1-2	1	1	2	2	2	5	0	0	0	1	0	3			
11	Justice Williams		05:38	1-2	0-0	1-2	0	1	1	0	1	3	0	0	0	0	0	0			
Team							3	1	4			0			0						
Totals				24-57	9-23	8-15	8	31	39	20	15	65	14	15	11	5	6	5			

Shooting By Period		
1st FG%	12-29	41.4%
3PT%	5-10	50.0%
FT%	6-10	60%
2nd FG%	12-28	42.9%
3PT%	4-13	30.8%
FT%	2-5	40%
GM FG%	24-57	42.1%
3PT%	9-23	39.1%
FT%	8-15	53.3%

Dead Ball Rebounds: 4, 1

Technical Fouls::NONE

	UKY	LSU
Biggest lead	9 (2 nd 13:06)	9 (2 nd 2:35)
Best Scoring Run	11 (2 nd 17:11)	10 (2 nd 7:06)
Lead Changes	9	
Times Tied	3	
Time with Lead	14:02	24:01

Points from	UKY	LSU
Turnovers	16	15
Paint	24	24
Second Chance	6	16
Fast Breaks	7	9
Bench	32	29

	Period by Period Scoring		
	1st	2nd	TOT
UKY	30	30	60
LSU	35	30	65



Officials: Joe Lindsay, Mike Nance, Chuck Jones

Period 1

Quarter Starters:

LSU	0 Murray B	1 Pinson X	4 Days D	5 Wilkinson M	15 Reid E
UKY	2 Wheeler S	3 Washington Jr. T	12 Brooks Jr. K	31 Grady K	34 Tshiebwe O

Game Time	LSU	Score	Diff	UKY
20:00	15 REID E jumpball lost			34 TSHIEBWE O jumpball won
19:46		0-3	-3	3 WASHINGTON JR. T 3pt FG , jump shot made (3)
19:46				2 WHEELER S assist (1)
19:19	15 REID E 2pt FG in the paint, layup made (2)	2-3	-1	
19:19	0 MURRAY B assist (1)			
18:45				34 TSHIEBWE O 2pt FG outside the paint, jump shot missed
18:41	4 DAYS D defensive rebound (1)			
18:26	15 REID E 2pt FG in the paint, jump shot missed			
18:22				34 TSHIEBWE O defensive rebound (1)
18:19				2 WHEELER S 2pt FG outside the paint, jump shot missed
18:14	0 MURRAY B defensive rebound (1)			
18:06	5 WILKINSON M 3pt FG , jump shot missed			
18:04				3 WASHINGTON JR. T defensive rebound (1)
17:56				12 BROOKS JR. K 3pt FG , jump shot missed
17:52	5 WILKINSON M defensive rebound (1)			
17:43	0 MURRAY B 3pt FG , jump shot made (3)	5-3	2	
17:43	1 PINSON X assist (1)			
17:33				34 TSHIEBWE O 2pt FG in the paint, dunk, blocked
17:33	15 REID E block (1)			
17:28	4 DAYS D defensive rebound (2)			
17:08	15 REID E 2pt FG outside the paint, jump shot missed			
17:06				12 BROOKS JR. K defensive rebound (1)
16:58	4 DAYS D foul personal (1 - 1)			3 WASHINGTON JR. T foul drawn (1)
16:58				12 BROOKS JR. K substitution out
16:58				0 TOPPIN J substitution in
16:39				31 GRADY K 3pt FG , jump shot missed
16:36	1 PINSON X defensive rebound (1)			
16:23	0 MURRAY B 2pt FG outside the paint, jump shot missed			
16:20				2 WHEELER S defensive rebound (1)
16:16	1 PINSON X steal (1)			2 WHEELER S turnover lost ball (1)
16:09	1 PINSON X 3pt FG from turnover, jump shot made (3)	8-3	5	
16:07				2 WHEELER S substitution out
16:07				10 MINTZ D substitution in
15:40				10 MINTZ D 2pt FG outside the paint, jump shot missed
15:37	15 REID E defensive rebound (1)			
15:34	Timeout media			
15:34	1 PINSON X substitution out			
15:34	15 REID E substitution out			
15:34	2 GAINES E substitution in			
15:34	13 EASON T substitution in			
15:34				0 TOPPIN J substitution out
15:34				12 BROOKS JR. K substitution in
15:20	4 DAYS D 3pt FG , jump shot missed			



Kentucky at LSU

01/04/22 Maravich Assembly Center, Baton Rouge
2021-22 Men's Basketball

Game Time: 6:00 PM
Game Duration: 2:14
Attendance: 11,808

Officials: Joe Lindsay, Mike Nance, Chuck Jones

Game Time	LSU	Score	Diff	UKY
15:13				3 WASHINGTON JR. T defensive rebound (2)
15:00				34 TSHIEBWE O 2pt FG in the paint, layup missed
14:58				34 TSHIEBWE O offensive rebound (2)
14:57				34 TSHIEBWE O 2pt FG second chance in the paint, layup missed
14:57				34 TSHIEBWE O offensive rebound (3)
14:55		8-5	3	34 TSHIEBWE O 2pt FG second chance in the paint, layup made (2)
14:45	2 GAINES E 2pt FG in the paint, layup made (2)	10-5	5	
14:19	5 WILKINSON M foul personal (1 - 2)			12 BROOKS JR. K foul drawn (1)
14:19	5 WILKINSON M substitution out			
14:19	3 FUDGE A substitution in			
14:01	3 FUDGE A foul shooting (1 - 3)			12 BROOKS JR. K foul drawn (2)
14:01		10-6	4	12 BROOKS JR. K free throw 1 - 2 made (1)
14:01	0 MURRAY B substitution out			
14:01	11 WILLIAMS J substitution in			
14:01				10 MINTZ D substitution out
14:01				23 HOPKINS B substitution in
14:01		10-7	3	12 BROOKS JR. K free throw 2 - 2 made (2)
13:37	13 EASON T foul drawn (1)			34 TSHIEBWE O foul shooting (1 - 1)
13:37	13 EASON T free throw 1 - 2 made (1)	11-7	4	
13:37	4 DAYS D substitution out			
13:37	15 REID E substitution in			
13:37	13 EASON T free throw 2 - 2 missed			
13:36	offensive rebound (7)			
13:33	11 WILLIAMS J 2pt FG second chance outside the paint, jump shot made (2)	13-7	6	
13:33	2 GAINES E assist (1)			
13:25	2 GAINES E foul personal (1 - 4)			3 WASHINGTON JR. T foul drawn (2)
13:18		13-9	4	34 TSHIEBWE O 2pt FG in the paint, dunk, made (4)
13:18				3 WASHINGTON JR. T assist (1)
12:52	13 EASON T foul offensive (1 - 5)			12 BROOKS JR. K foul drawn (3)
12:52	13 EASON T turnover offensive (1)			
12:43	2 GAINES E steal (1)			23 HOPKINS B turnover lost ball (1)
12:28	3 FUDGE A 2pt FG from turnover in the paint, dunk, made (2)	15-9	6	
12:03				23 HOPKINS B 2pt FG in the paint, jump shot blocked
12:03	3 FUDGE A block (1)			
11:57	13 EASON T defensive rebound (1)			
11:55	2 GAINES E turnover lost ball (1)			31 GRADY K steal (1)
11:50				31 GRADY K 3pt FG from turnover, jump shot missed
11:50				12 BROOKS JR. K offensive rebound (2)
11:50				12 BROOKS JR. K 2pt FG from turnover second chance in the paint, layup blocked
11:50	15 REID E block (2)			
11:50				23 HOPKINS B offensive rebound (1)
11:50	3 FUDGE A foul drawn (1)			23 HOPKINS B foul offensive (1 - 2)
11:50				23 HOPKINS B turnover offensive (2)
11:50	Timeout media			
11:50				12 BROOKS JR. K substitution out
11:50				23 HOPKINS B substitution out



Kentucky at LSU

01/04/22 Maravich Assembly Center, Baton Rouge
2021-22 Men's Basketball

Game Time: 6:00 PM
Game Duration: 2:14
Attendance: 11,808

Officials: Joe Lindsay, Mike Nance, Chuck Jones

Game Time	LSU	Score	Diff	UKY
11:50				0 TOPPIN J substitution in
11:50				10 MINTZ D substitution in
11:35	2 GAINES E turnover bad pass (2)			34 TSHIEBWE O steal (1)
11:32		15-11	4	34 TSHIEBWE O 2pt FG fast break from turnover in the paint, dunk, made (6)
11:23	11 WILLIAMS J foul drawn (1)			34 TSHIEBWE O foul shooting (2 - 3)
11:23				34 TSHIEBWE O substitution out
11:23				55 WARE L substitution in
11:23	11 WILLIAMS J free throw 1 - 2 missed			
11:23	offensive dead ball rebound (1)			
11:23	2 GAINES E substitution out			
11:23	13 EASON T substitution out			
11:23	1 PINSON X substitution in			
11:23	4 DAYS D substitution in			
11:23	11 WILLIAMS J free throw 2 - 2 made (3)	16-11	5	
11:23	11 WILLIAMS J substitution out			
11:23	0 MURRAY B substitution in			
11:15				3 WASHINGTON JR. T 2pt FG in the paint, jump shot missed
11:12	15 REID E defensive rebound (2)			
10:53	1 PINSON X turnover lost ball (1)			
10:36	3 FUDGE A foul personal (2 - 6)			0 TOPPIN J foul drawn (1)
10:36	3 FUDGE A substitution out			
10:36	5 WILKINSON M substitution in			
10:22	1 PINSON X foul personal (1 - 7)			31 GRADY K foul drawn (1)
10:22		16-12	4	31 GRADY K 1&1 free throw 1 made (1)
10:22				31 GRADY K 1&1 free throw 2 missed
10:21	5 WILKINSON M defensive rebound (2)			
10:09	1 PINSON X turnover lost ball (2)			55 WARE L steal (1)
10:04	4 DAYS D foul personal (2 - 8)			10 MINTZ D foul drawn (1)
10:04	4 DAYS D substitution out			
10:04	13 EASON T substitution in			
10:04		16-13	3	10 MINTZ D 1&1 free throw 1 made (1)
10:04				10 MINTZ D 1&1 free throw 2 missed
10:03	5 WILKINSON M defensive rebound (3)			
09:45	5 WILKINSON M turnover lost ball (1)			
09:36				31 GRADY K 3pt FG from turnover, jump shot missed
09:33	0 MURRAY B defensive rebound (2)			
09:21	13 EASON T turnover bad pass (2)			0 TOPPIN J steal (1)
09:18		16-15	1	0 TOPPIN J 2pt FG fast break from turnover in the paint, dunk, made (2)
09:18	0 MURRAY B foul shooting (1 - 9)			0 TOPPIN J foul drawn (2)
09:18	1 PINSON X substitution out			
09:18	2 GAINES E substitution in			
09:18		16-16	0	0 TOPPIN J free throw fast break 1 - 1 made (3)
09:18				0 TOPPIN J substitution out
09:18				4 COLLINS D substitution in
09:13	2 GAINES E 2pt FG in the paint, layup missed			
09:11				31 GRADY K defensive rebound (1)
09:06				55 WARE L turnover travel (1)
08:52	0 MURRAY B turnover out of bounds (1)			



Official Basketball Play by Play - First Half
Kentucky at LSU
 01/04/22 Maravich Assembly Center, Baton Rouge
 2021-22 Men's Basketball

Game Time: 6:00 PM
Game Duration: 2:14
Attendance: 11,808

Officials: Joe Lindsay, Mike Nance, Chuck Jones

Game Time	LSU	Score	Diff	UKY
08:28		16-18	-2	3 WASHINGTON JR. T 2pt FG from turnover in the paint, jump shot made (5)
07:59	15 REID E 3pt FG , jump shot made (5)	19-18	1	
07:59	13 EASON T assist (1)			
07:48		19-20	-1	55 WARE L 2pt FG in the paint, alleyoop made (2)
07:48				3 WASHINGTON JR. T assist (2)
07:29	13 EASON T 2pt FG in the paint, jump shot made (3)	21-20	1	
07:23				10 MINTZ D 2pt FG outside the paint, jump shot missed
07:22	15 REID E defensive rebound (3)			
07:22	15 REID E foul drawn (1)			55 WARE L foul personal (1 - 4)
07:22	Timeout media			
07:22	5 WILKINSON M substitution out			
07:22	4 DAYS D substitution in			
07:22				10 MINTZ D substitution out
07:22				11 ALLEN D substitution in
06:58	2 GAINES E 2pt FG in the paint, layup blocked			
06:58				4 COLLINS D block (1)
06:58				55 WARE L defensive rebound (1)
06:34	2 GAINES E steal (2)			55 WARE L turnover lost ball (2)
06:27	4 DAYS D 3pt FG from turnover, jump shot missed			
06:24				55 WARE L defensive rebound (2)
06:24	15 REID E foul personal (1 - 10)			55 WARE L foul drawn (1)
06:24	2 GAINES E substitution out			
06:24	15 REID E substitution out			
06:24	1 PINSON X substitution in			
06:24	5 WILKINSON M substitution in			
06:24				55 WARE L free throw 1 - 2 missed
06:24				offensive dead ball rebound (1)
06:24				55 WARE L free throw 2 - 2 missed
06:22	4 DAYS D defensive rebound (3)			
06:16	4 DAYS D 3pt FG , jump shot missed			
06:12				defensive rebound (13)
06:12	0 MURRAY B substitution out			
06:12	11 WILLIAMS J substitution in			
06:12				4 COLLINS D substitution out
06:12				12 BROOKS JR. K substitution in
05:57				31 GRADY K 3pt FG , jump shot missed
05:56	5 WILKINSON M defensive rebound (4)			
05:56	5 WILKINSON M foul drawn (1)			11 ALLEN D foul personal (1 - 5)
05:43	4 DAYS D 3pt FG , jump shot made (3)	24-20	4	
05:43	1 PINSON X assist (2)			
05:15				31 GRADY K 2pt FG outside the paint, jump shot missed
05:11	4 DAYS D defensive rebound (4)			
05:01	1 PINSON X foul drawn (1)			55 WARE L foul personal (2 - 6)
05:01				31 GRADY K substitution out
05:01				10 MINTZ D substitution in
05:01	13 EASON T foul drawn (2)			12 BROOKS JR. K foul personal (1 - 7)
05:01	4 DAYS D substitution out			
05:01	15 REID E substitution in			



Official Basketball Play by Play - First Half
Kentucky at LSU
 01/04/22 Maravich Assembly Center, Baton Rouge
 2021-22 Men's Basketball

Game Time: 6:00 PM
Game Duration: 2:14
Attendance: 11,808

Officials: Joe Lindsay, Mike Nance, Chuck Jones

Game Time	LSU	Score	Diff	UKY
05:01				11 ALLEN D substitution out
05:01				12 BROOKS JR. K substitution out
05:01				0 TOPPIN J substitution in
05:01				31 GRADY K substitution in
05:01	13 EASON T 1&1 free throw 1 made (4)	25-20	5	
05:01	13 EASON T 1&1 free throw 2 made (5)	26-20	6	
04:53				3 WASHINGTON JR. T 2pt FG in the paint, jump shot blocked
04:53	15 REID E block (3)			
04:50	15 REID E defensive rebound (4)			
04:49	15 REID E turnover lost ball (1)			31 GRADY K steal (2)
04:42				3 WASHINGTON JR. T 2pt FG from turnover outside the paint, jump shot missed
04:40				3 WASHINGTON JR. T offensive rebound (3)
04:39				31 GRADY K 3pt FG from turnover second chance, jump shot missed
04:33				0 TOPPIN J offensive rebound (1)
04:33		26-22	4	0 TOPPIN J 2pt FG from turnover second chance in the paint, layup made (5)
04:15	13 EASON T 2pt FG in the paint, layup missed			
04:13	5 WILKINSON M offensive rebound (5)			
04:12	5 WILKINSON M 2pt FG second chance in the paint, layup missed			
04:12				55 WARE L defensive rebound (3)
04:12	15 REID E foul personal (2 - 11)			55 WARE L foul drawn (2)
04:12				55 WARE L free throw 1 - 2 missed
04:12				offensive dead ball rebound (2)
04:12	5 WILKINSON M substitution out			
04:12	15 REID E substitution out			
04:12	3 FUDGE A substitution in			
04:12	4 DAYS D substitution in			
04:12				55 WARE L free throw 2 - 2 missed
04:10	11 WILLIAMS J defensive rebound (1)			
03:51	11 WILLIAMS J 2pt FG outside the paint, jump shot missed			
03:49				0 TOPPIN J defensive rebound (2)
03:42		26-24	2	0 TOPPIN J 2pt FG outside the paint, jump shot made (7)
03:19	13 EASON T 2pt FG in the paint, layup missed			
03:17				0 TOPPIN J defensive rebound (3)
03:14		26-26	0	0 TOPPIN J 2pt FG fast break in the paint, dunk, made (9)
03:14				31 GRADY K assist (1)
03:12	Timeout 30 Sec			
03:12	11 WILLIAMS J substitution out			
03:12	0 MURRAY B substitution in			
03:12				55 WARE L substitution out
03:12				4 COLLINS D substitution in
03:07	3 FUDGE A 2pt FG fast break in the paint, dunk, made (4)	28-26	2	
03:07	1 PINSON X assist (3)			
02:36		28-28	0	0 TOPPIN J 2pt FG in the paint, layup made (11)
02:17	4 DAYS D 3pt FG , jump shot missed			
02:15				3 WASHINGTON JR. T defensive rebound (4)
02:12	4 DAYS D substitution out			



Officials: Joe Lindsay, Mike Nance, Chuck Jones

Game Time	LSU	Score	Diff	UKY
02:12	2 GAINES E substitution in			
02:08				10 MINTZ D 3pt FG , jump shot missed
02:05	2 GAINES E defensive rebound (1)			
02:02	1 PINSON X 2pt FG in the paint, dunk, missed			
02:00	offensive rebound (21)			
01:50	0 MURRAY B 3pt FG second chance , jump shot made (6)	31-28	3	
01:50	2 GAINES E assist (2)			
01:39				31 GRADY K 3pt FG , jump shot missed
01:35	13 EASON T defensive rebound (2)			
01:29	13 EASON T 2pt FG in the paint, layup blocked			
01:29				10 MINTZ D block (1)
01:29	3 FUDGE A offensive rebound (1)			
01:29	3 FUDGE A foul drawn (2)			3 WASHINGTON JR. T foul shooting (1 - 8)
01:29	3 FUDGE A free throw 1 - 2 missed			
01:29	offensive dead ball rebound (2)			
01:29				0 TOPPIN J substitution out
01:29				31 GRADY K substitution out
01:29				11 ALLEN D substitution in
01:29				55 WARE L substitution in
01:29	3 FUDGE A free throw 2 - 2 made (5)	32-28	4	
01:12				3 WASHINGTON JR. T 3pt FG , jump shot missed
01:09	3 FUDGE A defensive rebound (2)			
00:51	1 PINSON X 2pt FG in the paint, layup blocked			
00:51				3 WASHINGTON JR. T block (1)
00:44				3 WASHINGTON JR. T defensive rebound (5)
00:43				3 WASHINGTON JR. T 2pt FG in the paint, layup missed
00:41	13 EASON T defensive rebound (3)			
00:42	13 EASON T foul drawn (3)			11 ALLEN D foul shooting (2 - 9)
00:42	13 EASON T free throw fast break 1 - 2 missed			
00:42	offensive dead ball rebound (3)			
00:42				11 ALLEN D substitution out
00:42				31 GRADY K substitution in
00:42				4 COLLINS D substitution out
00:42				0 TOPPIN J substitution in
00:42	13 EASON T free throw fast break 2 - 2 made (6)	33-28	5	
00:14	1 PINSON X steal (2)			10 MINTZ D turnover lost ball (1)
00:11	1 PINSON X 2pt FG fast break from turnover in the paint, dunk, made (5)	35-28	7	
00:05				10 MINTZ D 3pt FG , jump shot missed
00:00				0 TOPPIN J offensive rebound (4)
00:00		35-30	5	0 TOPPIN J 2pt FG second chance in the paint, layup made (13)
END OF PERIOD				
LSU 35-30 UKY				



Kentucky at LSU

01/04/22 Maravich Assembly Center, Baton Rouge
2021-22 Men's Basketball

Game Time: 6:00 PM
Game Duration: 2:14
Attendance: 11,808

Officials: Joe Lindsay, Mike Nance, Chuck Jones

Kentucky - 30

NO.	Name	Min	FG			Rebounds			Fouls		TP	AS	TO	ST	Blocks		+/-
			M-A	3P	FT	OR	DR	TOT	PF	FD					BS	BA	
12	Keion Brooks Jr.	F 07:57	0-2	0-1	2-2	1	1	2	1	3	2	0	0	0	0	1	-6
34	Oscar Tshiebwe	F 08:37	3-7	0-0	0-0	2	1	3	2	0	6	0	0	1	0	1	-4
2	Sahvir Wheeler	G 03:53	0-1	0-0	0-0	0	1	1	0	0	0	1	1	0	0	-5	
3	TyTy Washington Jr.	G 20:00	2-7	1-2	0-0	1	4	5	1	2	5	2	0	0	1	-5	
31	Kellan Grady	G 19:13	0-7	0-6	1-2	0	1	1	0	1	1	1	0	2	0	-4	
0	Jacob Toppin	08:10	6-6	0-0	1-1	2	2	4	0	2	13	0	0	1	0	3	
10	Davion Mintz	11:35	0-4	0-2	1-2	0	0	0	0	1	1	0	1	0	1	5	
23	Bryce Hopkins	02:11	0-1	0-0	0-0	1	0	1	1	0	0	0	2	0	1	-2	
55	Lance Ware	09:40	1-1	0-0	0-4	0	3	3	2	2	2	0	2	1	0	2	
4	Daimion Collins	05:36	0-0	0-0	0-0	0	0	0	0	0	0	0	0	0	1	-5	
11	Dontaie Allen	03:08	0-0	0-0	0-0	0	0	0	2	0	0	0	0	0	0	-4	
Team						0	1	1			0		0				
Totals			12-36	1-11	5-11	7	14	21	9	11	30	4	6	5	3	4	-5

Shooting By Period		
1st FG%	12-36	33.3%
3PT%	1-11	9.1%
FT%	5-11	45.5%
GM FG%	12-36	33.3%
3PT%	1-11	9.1%
FT%	5-11	45.5%

Dead Ball Rebounds: 2, 0

Technical Fouls::NONE

LSU - 35

NO.	Name	Min	FG			Rebounds			Fouls		TP	AS	TO	ST	Blocks		+/-
			M-A	3P	FT	OR	DR	TOT	PF	FD					BS	BA	
4	Darius Days	F 12:03	1-5	1-5	0-0	0	4	4	2	0	3	0	0	0	0	3	
5	Mwani Wilkinson	F 11:07	0-2	0-1	0-0	1	4	5	1	1	0	0	1	0	0	4	
15	Efton Reid	C 12:28	2-4	1-1	0-0	0	4	4	2	1	5	0	1	0	3	2	
0	Brandon Murray	G 14:22	2-3	2-2	0-0	0	2	2	1	0	6	1	1	0	0	5	
1	Xavier Pinson	G 12:55	2-4	1-1	0-0	0	1	1	1	1	5	3	2	2	0	6	
2	Eric Gaines	09:17	1-3	0-0	0-0	0	1	1	1	0	2	2	2	2	0	4	
13	Tari Eason	14:15	1-4	0-0	4-6	0	3	3	1	3	6	1	2	0	1	0	
3	Alex Fudge	07:55	2-2	0-0	1-2	1	1	2	2	2	5	0	0	0	1	1	
11	Justice Williams	05:38	1-2	0-0	1-2	0	1	1	0	1	3	0	0	0	0	0	
Team						2	0	2			0		0				
Totals			12-29	5-10	6-10	4	21	25	11	9	35	7	9	4	4	3	5

Shooting By Period		
1st FG%	12-29	41.4%
3PT%	5-10	50.0%
FT%	6-10	60%
GM FG%	12-29	41.4%
3PT%	5-10	50.0%
FT%	6-10	60.0%

Dead Ball Rebounds: 3, 0

Technical Fouls::NONE

	UKY	LSU
Biggest lead	3 (1 st 19:46)	7 (1 st 0:11)
Best Scoring Run	7 (1 st 8:28)	8 (1 st 16:09)
Lead Changes	5	
Times Tied	3	
Time with Lead	02:51	15:12

Points from	UKY	LSU
Turnovers	11	7
Paint	20	12
Second Chance	6	6
Fast Breaks	7	5
Bench	16	16

	Period by Period Scoring		
	1st	2nd	TOT
UKY	30	30	60
LSU	35	30	65



Period 2

Quarter Starters:

LSU	0 Murray B	1 Pinson X	4 Days D	5 Wilkinson M	15 Reid E
UKY	0 Toppin J	3 Washington Jr. T	10 Mintz D	31 Grady K	34 Tshiebwe O

Game Time	LSU	Score	Diff	UKY
20:00	2 GAINES E substitution out			
20:00	3 FUDGE A substitution out			
20:00	13 EASON T substitution out			
20:00	4 DAYS D substitution in			
20:00	5 WILKINSON M substitution in			
20:00	15 REID E substitution in			
20:00				55 WARE L substitution out
20:00				34 TSHIEBWE O substitution in
19:44	15 REID E 2pt FG outside the paint, jump shot missed			
19:42				0 TOPPIN J defensive rebound (5)
19:34	5 WILKINSON M steal (1)			34 TSHIEBWE O turnover bad pass (1)
19:19	1 PINSON X turnover lost ball (3)			
19:05	15 REID E steal (1)			3 WASHINGTON JR. T turnover bad pass (1)
18:52	0 MURRAY B 2pt FG from turnover in the paint, layup blocked			
18:52				0 TOPPIN J block (1)
18:52				0 TOPPIN J defensive rebound (6)
18:39		35-33	2	10 MINTZ D 3pt FG , jump shot made (4)
18:39				31 GRADY K assist (2)
18:21	1 PINSON X 3pt FG , jump shot missed			
18:17				34 TSHIEBWE O defensive rebound (4)
17:59		35-36	-1	31 GRADY K 3pt FG , jump shot made (4)
17:59				10 MINTZ D assist (1)
17:38	4 DAYS D 3pt FG , jump shot missed			
17:36				defensive rebound (25)
17:11		35-39	-4	10 MINTZ D 3pt FG , jump shot made (7)
17:11				0 TOPPIN J assist (1)
17:09	Timeout 30 Sec			
16:56	0 MURRAY B 2pt FG outside the paint, jump shot made (8)	37-39	-2	
16:56	4 DAYS D assist (1)			
16:46	15 REID E foul shooting (3 - 1)			10 MINTZ D foul drawn (2)
16:46		37-40	-3	10 MINTZ D free throw 1 - 2 made (8)
16:46	15 REID E substitution out			
16:46	13 EASON T substitution in			
16:46		37-41	-4	10 MINTZ D free throw 2 - 2 made (9)
16:20	4 DAYS D 2pt FG in the paint, layup missed			
16:18				34 TSHIEBWE O defensive rebound (5)
15:55				10 MINTZ D 3pt FG , jump shot missed
15:51	1 PINSON X defensive rebound (2)			
15:44	13 EASON T 3pt FG , jump shot missed			
15:41				34 TSHIEBWE O defensive rebound (6)
15:20		37-44	-7	31 GRADY K 3pt FG , jump shot made (7)
15:20				3 WASHINGTON JR. T assist (3)
15:01	1 PINSON X 2pt FG in the paint, layup made (7)	39-44	-5	



Kentucky at LSU

Officials: Joe Lindsay, Mike Nance, Chuck Jones

Game Time	LSU	Score	Diff	UKY
14:39		39-47	-8	31 GRADY K 3pt FG , jump shot made (10)
14:39				3 WASHINGTON JR. T assist (4)
14:29	0 MURRAY B turnover bad pass (2)			3 WASHINGTON JR. T steal (1)
14:26	0 MURRAY B foul personal (2 - 2)			31 GRADY K foul drawn (2)
14:26	Timeout media			
14:26	1 PINSON X substitution out			
14:26	4 DAYS D substitution out			
14:26	2 GAINES E substitution in			
14:26	3 FUDGE A substitution in			
14:08				10 MINTZ D 3pt FG from turnover, jump shot missed
14:07				34 TSHIEBWE O offensive rebound (7)
14:07	13 EASON T foul personal (2 - 3)			34 TSHIEBWE O foul drawn (1)
13:56				10 MINTZ D 2pt FG from turnover second chance outside the paint, jump shot missed
13:52	0 MURRAY B defensive rebound (3)			
13:36	0 MURRAY B 2pt FG outside the paint, jump shot made (10)	41-47	-6	
13:06		41-50	-9	31 GRADY K 3pt FG , jump shot made (13)
13:06				0 TOPPIN J assist (2)
12:39	2 GAINES E 3pt FG , jump shot made (5)	44-50	-6	
12:39	13 EASON T assist (2)			
12:10	2 GAINES E foul personal (2 - 4)			31 GRADY K foul drawn (3)
12:10	2 GAINES E substitution out			
12:10	3 FUDGE A substitution out			
12:10	1 PINSON X substitution in			
12:10	4 DAYS D substitution in			
11:47				10 MINTZ D 3pt FG , jump shot missed
11:44	4 DAYS D defensive rebound (5)			
11:39	5 WILKINSON M 3pt FG , jump shot missed			
11:35	13 EASON T offensive rebound (4)			
11:35	13 EASON T 2pt FG second chance in the paint, layup made (8)	46-50	-4	
11:35	13 EASON T foul drawn (4)			3 WASHINGTON JR. T foul shooting (2 - 1)
11:35	Timeout media			
11:35				10 MINTZ D substitution out
11:35				12 BROOKS JR. K substitution in
11:35	13 EASON T free throw 1 - 1 made (9)	47-50	-3	
11:33				Timeout 30 Sec
11:05				31 GRADY K 3pt FG , jump shot missed
11:02				offensive rebound (29)
10:47	0 MURRAY B steal (1)			3 WASHINGTON JR. T turnover bad pass (2)
10:33	0 MURRAY B turnover bad pass (3)			0 TOPPIN J steal (2)
10:30				3 WASHINGTON JR. T 3pt FG from turnover, jump shot missed
10:30				3 WASHINGTON JR. T offensive rebound (6)
10:28				3 WASHINGTON JR. T 2pt FG from turnover second chance in the paint, layup missed
10:25				34 TSHIEBWE O offensive rebound (8)
10:25	5 WILKINSON M foul shooting (2 - 5)			34 TSHIEBWE O foul drawn (2)
10:25				34 TSHIEBWE O free throw 1 - 2 missed
10:25				offensive dead ball rebound (3)
10:25	0 MURRAY B substitution out			
10:25	2 GAINES E substitution in			



Kentucky at LSU

Officials: Joe Lindsay, Mike Nance, Chuck Jones

Game Time	LSU	Score	Diff	UKY
10:25				34 TSHIEBWE O free throw 2 - 2 missed
10:23	13 EASON T defensive rebound (5)			
10:00	4 DAYS D 3pt FG , jump shot missed			
09:54				34 TSHIEBWE O defensive rebound (9)
09:30				34 TSHIEBWE O 2pt FG outside the paint, jump shot missed
09:27	1 PINSON X defensive rebound (3)			
09:20	13 EASON T 2pt FG in the paint, layup missed			
09:17				34 TSHIEBWE O defensive rebound (10)
09:17	jump ball situation			
09:17	13 EASON T substitution out			
09:17	15 REID E substitution in			
09:17	4 DAYS D substitution out			
09:17	3 FUDGE A substitution in			
09:17				3 WASHINGTON JR. T substitution out
09:17				10 MINTZ D substitution in
09:03				0 TOPPIN J 2pt FG in the paint, jump shot missed
09:00	5 WILKINSON M defensive rebound (6)			
08:55	1 PINSON X 2pt FG in the paint, layup blocked			
08:55				34 TSHIEBWE O block (1)
08:53				34 TSHIEBWE O defensive rebound (11)
08:52				10 MINTZ D turnover travel (2)
08:52				12 BROOKS JR. K substitution out
08:52				4 COLLINS D substitution in
08:41	1 PINSON X 2pt FG from turnover in the paint, layup missed			
08:37				34 TSHIEBWE O defensive rebound (12)
08:36				34 TSHIEBWE O turnover lost ball (2)
08:36	3 FUDGE A substitution out			
08:36	5 WILKINSON M substitution out			
08:36	0 MURRAY B substitution in			
08:36	4 DAYS D substitution in			
08:08	15 REID E foul drawn (2)			4 COLLINS D foul shooting (1 - 2)
08:08	15 REID E free throw 1 - 2 made (6)	48-50	-2	
08:08	15 REID E free throw 2 - 2 missed			
08:05				0 TOPPIN J defensive rebound (7)
07:46	Timeout media			
07:46	15 REID E substitution out			
07:46	13 EASON T substitution in			
07:44	2 GAINES E foul personal (3 - 6)			34 TSHIEBWE O foul drawn (3)
07:30	0 MURRAY B foul personal (3 - 7)			34 TSHIEBWE O foul drawn (4)
07:30				34 TSHIEBWE O 1&1 free throw 1 missed
07:30	4 DAYS D defensive rebound (6)			
07:10	4 DAYS D 3pt FG , jump shot missed			
07:07	13 EASON T offensive rebound (6)			
07:06	2 GAINES E 3pt FG second chance, jump shot made (8)	51-50	1	
07:06	13 EASON T assist (3)			
06:44		51-52	-1	34 TSHIEBWE O 2pt FG in the paint, dunk, made (8)
06:44				10 MINTZ D assist (2)
06:26	4 DAYS D 3pt FG , jump shot made (6)	54-52	2	
06:26	1 PINSON X assist (4)			



Kentucky at LSU

Officials: Joe Lindsay, Mike Nance, Chuck Jones

Game Time	LSU	Score	Diff	UKY
06:15				Timeout 30 Sec
06:15	1 PINSON X substitution out			
06:15	5 WILKINSON M substitution in			
06:15				4 COLLINS D substitution out
06:15				12 BROOKS JR. K substitution in
06:00				10 MINTZ D substitution out
06:00				3 WASHINGTON JR. T substitution in
05:51				0 TOPPIN J 2pt FG outside the paint, jump shot missed
05:47	4 DAYS D defensive rebound (7)			
05:31	0 MURRAY B 3pt FG , jump shot missed			
05:28				0 TOPPIN J defensive rebound (8)
05:26	2 GAINES E steal (3)			31 GRADY K turnover bad pass (1)
05:23	4 DAYS D 3pt FG from turnover, jump shot missed			
05:17				12 BROOKS JR. K defensive rebound (3)
04:51				0 TOPPIN J 2pt FG outside the paint, jump shot missed
04:49	defensive rebound (36)			
04:49	5 WILKINSON M substitution out			
04:49	1 PINSON X substitution in			
04:49				0 TOPPIN J substitution out
04:49				10 MINTZ D substitution in
04:27	1 PINSON X 3pt FG , jump shot missed			
04:23	1 PINSON X offensive rebound (4)			
04:20	1 PINSON X 2pt FG second chance in the paint, jump shot made (9)	56-52	4	
03:55	Timeout media			
03:55	1 PINSON X substitution out			
03:55	5 WILKINSON M substitution in			
03:55				3 WASHINGTON JR. T substitution out
03:55				0 TOPPIN J substitution in
03:50	2 GAINES E steal (4)			31 GRADY K turnover lost ball (2)
03:30	4 DAYS D 3pt FG from turnover, jump shot made (9)	59-52	7	
03:30	2 GAINES E assist (3)			
03:06				12 BROOKS JR. K 2pt FG outside the paint, jump shot missed
03:03	2 GAINES E defensive rebound (2)			
02:39	2 GAINES E 2pt FG in the paint, layup blocked			
02:39				12 BROOKS JR. K block (1)
02:39	offensive rebound (39)			
02:39	5 WILKINSON M substitution out			
02:39	1 PINSON X substitution in			
02:39				12 BROOKS JR. K substitution out
02:39				55 WARE L substitution in
02:35	13 EASON T 2pt FG second chance in the paint, layup made (11)	61-52	9	
02:25	0 MURRAY B foul shooting (4 - 8)			0 TOPPIN J foul drawn (3)
02:25				0 TOPPIN J free throw 1 - 2 missed
02:25				offensive dead ball rebound (4)
02:25		61-53	8	0 TOPPIN J free throw 2 - 2 made (14)
01:59	1 PINSON X foul drawn (2)			31 GRADY K foul shooting (1 - 3)
01:58	1 PINSON X free throw 1 - 2 missed			
01:58	offensive dead ball rebound (4)			



Official Basketball Play by Play - Second Half

Kentucky at LSU

01/04/22 Maravich Assembly Center, Baton Rouge
2021-22 Men's Basketball

Game Time: 6:00 PM
Game Duration: 2:14
Attendance: 11,808

Officials: Joe Lindsay, Mike Nance, Chuck Jones

Game Time	LSU	Score	Diff	UKY
01:58	1 PINSON X free throw 2 - 2 missed			
01:58				34 TSHIEBWE O defensive rebound (13)
01:52	0 MURRAY B foul personal (5 - 9)			10 MINTZ D foul drawn (3)
01:52	0 MURRAY B substitution out			
01:52	5 WILKINSON M substitution in			
01:52		61-54	7	10 MINTZ D 1&1 free throw 1 made (10)
01:52		61-55	6	10 MINTZ D 1&1 free throw 2 made (11)
01:48	13 EASON T foul drawn (5)			0 TOPPIN J foul personal (1 - 4)
01:43	13 EASON T foul drawn (6)			0 TOPPIN J foul personal (2 - 5)
01:29	1 PINSON X turnover bad pass (4)			
01:20		61-58	3	10 MINTZ D 3pt FG from turnover, jump shot made (14)
00:50	2 GAINES E turnover bad pass (3)			
00:27		61-60	1	10 MINTZ D 2pt FG from turnover in the paint, layup made (16)
00:23	2 GAINES E foul drawn (1)			10 MINTZ D foul personal (1 - 6)
00:21	4 DAYS D turnover bad pass (1)			34 TSHIEBWE O steal (2)
00:16	1 PINSON X steal (3)			10 MINTZ D turnover lost ball (3)
00:13	13 EASON T 2pt FG fast break from turnover in the paint, layup made (13)	63-60	3	
00:13	4 DAYS D assist (2)			
00:09	5 WILKINSON M steal (2)			10 MINTZ D turnover lost ball (4)
00:02	1 PINSON X 2pt FG fast break from turnover in the paint, layup made (11)	65-60	5	
00:02	5 WILKINSON M assist (1)			
00:00				31 GRADY K 3pt FG , jump shot blocked
00:00	13 EASON T block (1)			
00:00	defensive dead ball rebound (5)			
END OF GAME				
LSU 65-60 UKY				



Kentucky at LSU

01/04/22 Maravich Assembly Center, Baton Rouge
2021-22 Men's Basketball

Game Time: 6:00 PM
Game Duration: 2:14
Attendance: 11,808

Officials: Joe Lindsay, Mike Nance, Chuck Jones

Kentucky - 30

NO.	Name	F	Min	FG			Rebounds			Fouls		TP	AS	TO	ST	Blocks		+/-
				M-A	M-A	M-A	OR	DR	TOT	PF	FD					BS	BA	
12	Keion Brooks Jr.	F	06:19	0-1	0-0	0-0	0	1	1	0	0	0	0	0	0	1	0	-6
34	Oscar Tshiebwe	F	20:00	1-2	0-0	0-3	2	8	10	0	4	2	0	2	1	1	0	0
2	Sahvir Wheeler	G	00:00	0-0	0-0	0-0	0	0	0	0	0	0	0	0	0	0	0	0
3	TyTy Washington Jr.	G	12:48	0-2	0-1	0-0	1	0	1	1	0	0	2	2	1	0	0	6
31	Kellan Grady	G	20:00	4-6	4-6	0-0	0	0	0	1	2	12	1	2	0	0	1	0
10	Davion Mintz		16:31	4-8	3-6	4-4	0	0	0	1	2	15	2	3	0	0	0	1
4	Daimion Collins		02:37	0-0	0-0	0-0	0	0	0	1	0	0	0	0	0	0	0	-5
0	Jacob Toppin		19:06	0-3	0-0	1-2	0	4	4	2	1	1	2	0	1	1	0	2
55	Lance Ware		02:39	0-0	0-0	0-0	0	0	0	0	0	0	0	0	0	0	0	2
Team							1	1	2			0		0				
Totals				9-22	7-13	5-9	4	14	18	6	9	30	7	9	3	3	1	0

Shooting By Period		
2 nd FG%	9-22	40.9%
3PT%	7-13	53.8%
FT%	5-9	55.6%
GM FG%	9-22	40.9%
3PT%	7-13	53.8%
FT%	5-9	55.6%

Dead Ball Rebounds: 2, 0

Technical Fouls::NONE

LSU - 30

NO.	Name	F	Min	FG			Rebounds			Fouls		TP	AS	TO	ST	Blocks		+/-
				M-A	M-A	M-A	OR	DR	TOT	PF	FD					BS	BA	
4	Darius Days	F	17:03	2-7	2-6	0-0	0	3	3	0	0	6	2	1	0	0	0	-2
5	Mwani Wilkinson	F	15:58	0-1	0-1	0-0	0	1	1	1	0	0	1	0	2	0	0	-8
15	Efton Reid	C	04:45	0-1	0-0	1-2	0	0	0	1	1	1	0	0	1	0	0	-7
0	Brandon Murray	G	16:19	2-4	0-1	0-0	0	1	1	4	0	4	0	2	1	0	1	3
1	Xavier Pinson	G	15:02	3-7	0-2	0-2	1	2	3	0	1	6	1	2	1	0	1	-5
13	Tari Eason		15:15	3-5	0-1	1-1	2	1	3	1	3	7	2	0	0	1	0	7
2	Eric Gaines		12:41	2-3	2-2	0-0	0	1	1	2	1	6	1	1	2	0	1	10
3	Alex Fudge		02:57	0-0	0-0	0-0	0	0	0	0	0	0	0	0	0	0	0	2
Team							1	1	2			0		0				
Totals				12-28	4-13	2-5	4	10	14	9	6	30	7	6	7	1	3	0

Shooting By Period		
2 nd FG%	12-28	42.9%
3PT%	4-13	30.8%
FT%	2-5	40%
GM FG%	12-28	42.9%
3PT%	4-13	30.8%
FT%	2-5	40.0%

Dead Ball Rebounds: 1, 1

Technical Fouls::NONE

	UKY	LSU
Biggest lead	9 (2 nd 13:06)	9 (2 nd 2:35)
Best Scoring Run	9(2 nd 17:11)	10(2 nd 7:06)
Lead Changes	4	
Times Tied	0	
Time with Lead	11:11	08:33

Points from	UKY	LSU
Turnovers	5	8
Paint	4	12
Second Chance	0	10
Fast Breaks	0	4
Bench	16	13

	Period by Period Scoring		
	1st	2nd	TOT
UKY	30	30	60
LSU	35	30	65



Kentucky at LSU

01/04/22 Maravich Assembly Center, Baton Rouge
2021-22 Men's Basketball

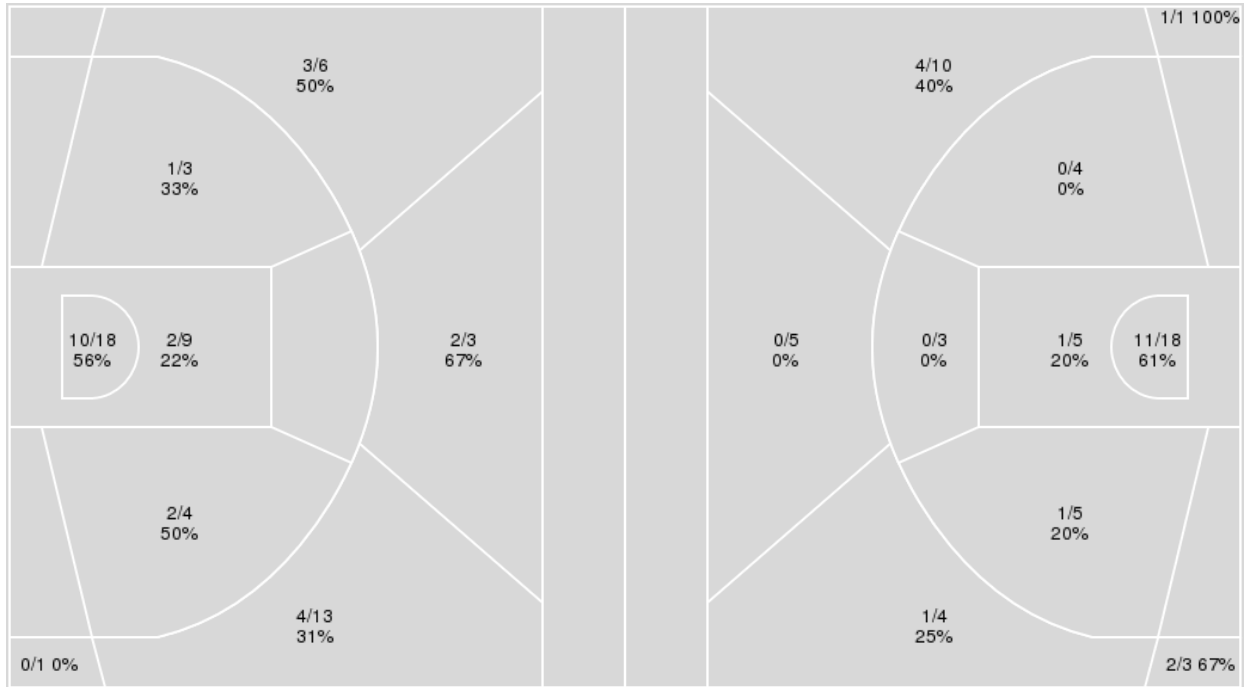
Game Time: 6:00 PM
Game Duration: 2:14
Attendance: 11,808

Officials: Joe Lindsay, Mike Nance, Chuck Jones

{ Players => 0, 1, 2, 3, 4, 5, 10, 11, 13, 15, 20, 21, 22, 24, 25, 30, 44; } { Players => All; } FG Types => All; Results => All;
FG Types => All; Results => All;

LSU

Kentucky



LSU	M/A	%
Field Goals	24/57	42
2 Points	15/34	44
3 Points	9/23	39
Free Throws	8/15	53

Kentucky	M/A	%
Field Goals	21/58	36
2 Points	13/34	38
3 Points	8/24	33
Free Throws	10/20	50



Kentucky at LSU

01/04/22 Maravich Assembly Center, Baton Rouge
2021-22 Men's Basketball

Game Time: 6:00 PM
Game Duration: 2:14
Attendance: 11,808

Officials: Joe Lindsay, Mike Nance, Chuck Jones

Kentucky

No	Name	Mins		Score		Points Diff		Points per Min		Assists		Rebounds		Steals		Turnovers	
		On	Off	On	Off	On	Off	On	Off	On	Off	On	Off	On	Off	On	Off
0	Jacob Toppin	27:16	12:44	47 - 42	13 - 23	5	-10	1.72	1.02	8	3	26	13	7	1	11	4
2	Sahvir Wheeler	03:53	36:07	3 - 8	57 - 57	-5	0	0.77	1.58	1	10	4	35	0	8	1	14
3	TyTy Washington Jr.	32:48	07:12	50 - 49	10 - 16	1	-6	1.52	1.39	10	1	35	4	7	1	10	5
4	Daimion Collins	08:13	31:47	8 - 18	52 - 47	-10	5	0.97	1.64	2	9	8	31	0	8	3	12
10	Davion Mintz	28:06	11:54	54 - 48	6 - 17	6	-11	1.92	0.50	9	2	23	16	6	2	9	6
11	Dontae Allen	03:08	36:52	0 - 4	60 - 61	-4	-1	0.00	1.63	0	11	4	35	0	8	1	14
12	Keion Brooks Jr.	14:16	25:44	9 - 21	51 - 44	-12	7	0.63	1.98	2	9	16	23	2	6	6	9
23	Bryce Hopkins	02:11	37:49	3 - 5	57 - 60	-2	-3	1.37	1.51	1	10	2	37	1	7	2	13
31	Kellan Grady	39:13	00:47	60 - 64	0 - 1	-4	-1	1.53	0.00	11	0	38	1	8	0	15	0
34	Oscar Tshiebwe	28:37	11:23	41 - 45	19 - 20	-4	-1	1.43	1.67	9	2	27	12	5	3	12	3
55	Lance Ware	12:19	27:41	25 - 21	35 - 44	4	-9	2.03	1.26	2	9	12	27	4	4	5	10

LSU

No	Name	Mins		Score		Points Diff		Points per Min		Assists		Rebounds		Steals		Turnovers	
		On	Off	On	Off	On	Off	On	Off	On	Off	On	Off	On	Off	On	Off
0	Brandon Murray	30:41	09:19	50 - 42	15 - 18	8	-3	1.63	1.61	10	4	29	10	8	3	8	7
1	Xavier Pinson	27:57	12:03	45 - 44	20 - 16	1	4	1.61	1.66	10	4	31	8	7	4	11	4
2	Eric Gaines	21:58	18:02	42 - 28	23 - 32	14	-9	1.91	1.28	9	5	20	19	7	4	7	8
3	Alex Fudge	10:52	29:08	20 - 17	45 - 43	3	2	1.84	1.54	4	10	12	27	2	9	4	11
4	Darius Days	29:06	10:54	42 - 41	23 - 19	1	4	1.44	2.11	10	4	24	15	9	2	8	7
5	Mwani Wilkinson	27:05	12:55	39 - 43	26 - 17	-4	9	1.44	2.01	9	5	26	13	8	3	11	4
11	Justice Williams	05:38	34:22	11 - 11	54 - 49	0	5	1.95	1.57	2	12	7	32	1	10	4	11
13	Tari Eason	29:30	10:30	53 - 46	12 - 14	7	-2	1.80	1.14	11	3	30	9	8	3	12	3
15	Efton Reid	17:13	22:47	23 - 28	42 - 32	-5	10	1.34	1.84	5	9	16	23	5	6	10	5



Kentucky at LSU

01/04/22 Maravich Assembly Center, Baton Rouge
2021-22 Men's Basketball

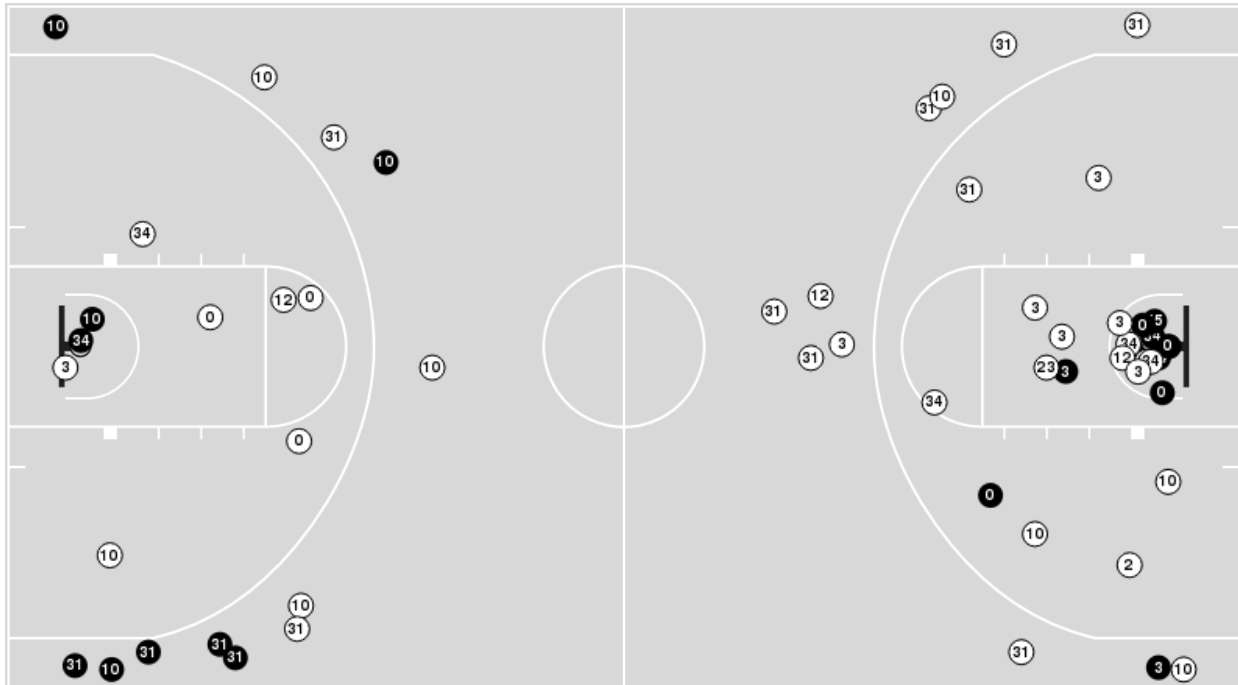
Game Time: 6:00 PM
Game Duration: 2:14
Attendance: 11,808

Officials: Joe Lindsay, Mike Nance, Chuck Jones

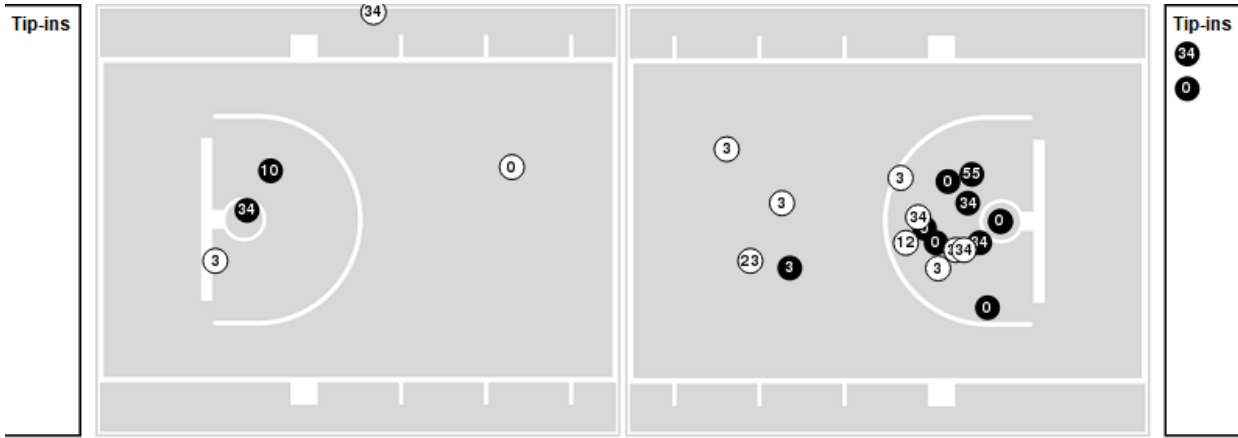
Players => AllFG Types=>AllResults=>All

Kentucky

All Field Goals



Blow Up Chart



● Made ○ Missed N - Player Number

Kentucky	M/A	%
Field Goals	21/58	36
2 Points	13/34	38
3 Points	8/24	33
Free Throws	10/20	50

Kentucky	M/A	%
Points in the Paint	24 (12 / 23)	52
Fast Break Points	7 (4/4)	100
Second Chance Points	6 (3/10)	30
Effective FG%	43	



Kentucky at LSU

01/04/22 Maravich Assembly Center, Baton Rouge
2021-22 Men's Basketball

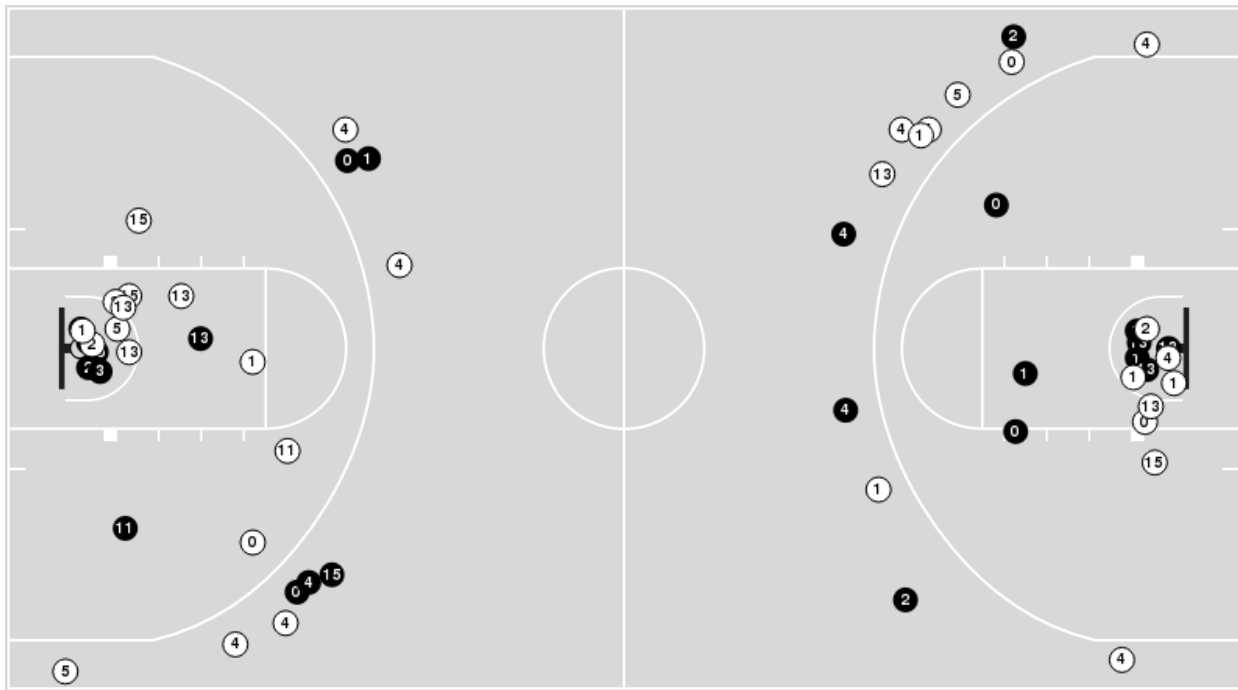
Game Time: 6:00 PM
Game Duration: 2:14
Attendance: 11,808

Officials: Joe Lindsay, Mike Nance, Chuck Jones

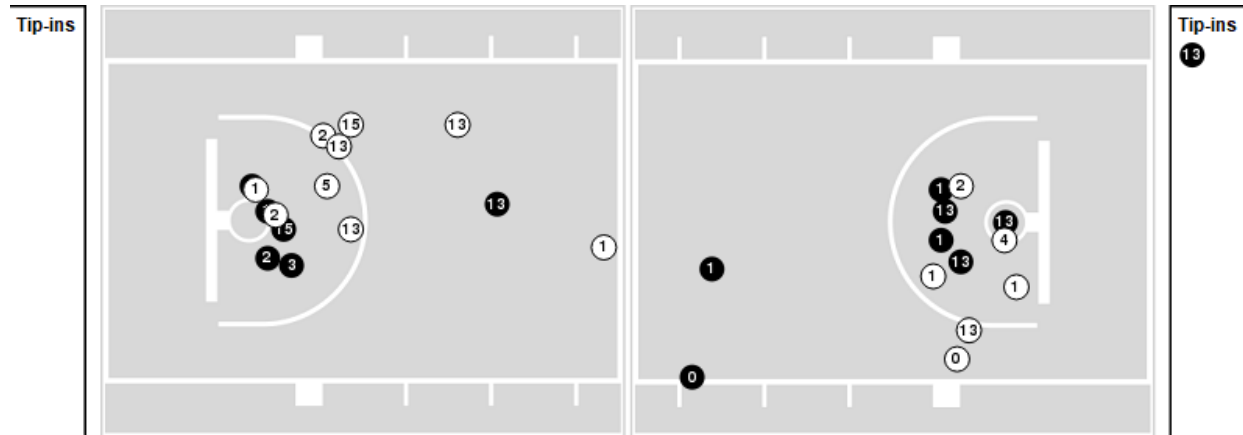
Players => 0, 1, 2, 3, 4, 5, 10, 11, 13, 15, 20, 21, 22, 24, 25, 30, 44FG Types=>AllResults=>All

LSU

All Field Goals



Blow Up Chart



● Made ○ Missed N - Player Number

LSU	M/A	%
Field Goals	24/57	42
2 Points	15/34	44
3 Points	9/23	39
Free Throws	8/15	53

LSU	M/A	%
Points in the Paint	24 (12 / 27)	44
Fast Break Points	9 (5/6)	83
Second Chance Points	16 (8/10)	80
Effective FG%	50	



Kentucky at LSU

01/04/22 Maravich Assembly Center, Baton Rouge
2021-22 Men's Basketball

Game Time: 6:00 PM
Game Duration: 2:14
Attendance: 11,808

Officials: Joe Lindsay, Mike Nance, Chuck Jones

Kentucky

Lineup	Quarter On	Time On	Quarter Off	Time Off	Time on Court	Score	Score Diff	Reb	Stl	Tov	Ass	PPP
2- Wheeler S/ 3- Washington Jr. T/ 12- Brooks Jr. K/ 31- Grady K/ 34- Tshiebwe O/	1	20:00	1	16:58	03:02	3-5	-2	3	0	0	1	0.6000
0- Toppin J/ 2- Wheeler S/ 3- Washington Jr. T/ 31- Grady K/ 34- Tshiebwe O/	1	16:58	1	16:07	00:51	0-3	-3	1	0	1	0	0.0000
0- Toppin J/ 3- Washington Jr. T/ 10- Mintz D/ 31- Grady K/ 34- Tshiebwe O/	1	16:07	1	15:34	00:33	0-0	0	0	0	0	0	0.0000
3- Washington Jr. T/ 10- Mintz D/ 12- Brooks Jr. K/ 31- Grady K/ 34- Tshiebwe O/	1	15:34	1	14:01	01:33	3-2	1	3	0	0	0	2.0833
3- Washington Jr. T/ 12- Brooks Jr. K/ 23- Hopkins B/ 31- Grady K/ 34- Tshiebwe O/	1	14:01	1	11:50	02:11	3-5	-2	2	1	2	1	0.6757
0- Toppin J/ 3- Washington Jr. T/ 10- Mintz D/ 31- Grady K/ 34- Tshiebwe O/	1	11:50	1	11:23	00:27	2-0	2	0	1	0	0	2.0000
0- Toppin J/ 3- Washington Jr. T/ 10- Mintz D/ 31- Grady K/ 55- Ware L/	1	11:23	1	09:18	02:05	5-1	4	0	2	0	0	0.9615
3- Washington Jr. T/ 4- Collins D/ 10- Mintz D/ 31- Grady K/ 55- Ware L/	1	09:18	1	07:22	01:56	4-5	-1	1	0	1	1	1.0000
3- Washington Jr. T/ 4- Collins D/ 11- Allen D/ 31- Grady K/ 55- Ware L/	1	07:22	1	06:12	01:10	0-0	0	3	0	1	0	0.0000
3- Washington Jr. T/ 11- Allen D/ 12- Brooks Jr. K/ 31- Grady K/ 55- Ware L/	1	06:12	1	05:01	01:11	0-3	-3	0	0	0	0	0.0000
3- Washington Jr. T/ 10- Mintz D/ 11- Allen D/ 12- Brooks Jr. K/ 55- Ware L/	1	05:01	1	05:01	00:00	0-0	0	0	0	0	0	0.0000
0- Toppin J/ 3- Washington Jr. T/ 10- Mintz D/ 31- Grady K/ 55- Ware L/	1	05:01	1	03:12	01:49	6-2	4	5	1	0	1	1.2295
0- Toppin J/ 3- Washington Jr. T/ 4- Collins D/ 10- Mintz D/ 31- Grady K/	1	03:12	1	01:29	01:43	2-5	-3	1	0	0	0	0.6667
3- Washington Jr. T/ 4- Collins D/ 10- Mintz D/ 11- Allen D/ 55- Ware L/	1	01:29	1	00:42	00:47	0-1	-1	1	0	0	0	0.0000
0- Toppin J/ 3- Washington Jr. T/ 10- Mintz D/ 31- Grady K/ 55- Ware L/	1	00:42	2	20:00	00:42	2-3	-1	1	0	1	0	1.0000
0- Toppin J/ 3- Washington Jr. T/ 10- Mintz D/ 31- Grady K/ 34- Tshiebwe O/	2	20:00	2	11:35	08:25	20-11	9	7	1	2	6	1.6835
0- Toppin J/ 3- Washington Jr. T/ 12- Brooks Jr. K/ 31- Grady K/ 34- Tshiebwe O/	2	11:35	2	09:17	02:18	0-1	-1	5	1	1	0	0.0000
0- Toppin J/ 10- Mintz D/ 12- Brooks Jr. K/ 31- Grady K/ 34- Tshiebwe O/	2	09:17	2	08:52	00:25	0-0	0	1	0	1	0	0.0000
0- Toppin J/ 4- Collins D/ 10- Mintz D/ 31- Grady K/ 34- Tshiebwe O/	2	08:52	2	06:15	02:37	2-7	-5	2	0	1	1	0.8197
0- Toppin J/ 10- Mintz D/ 12- Brooks Jr. K/ 31- Grady K/ 34- Tshiebwe O/	2	06:15	2	06:00	00:15	0-0	0	0	0	0	0	0.0000
0- Toppin J/ 3- Washington Jr. T/ 12- Brooks Jr. K/ 31- Grady K/ 34- Tshiebwe O/	2	06:00	2	04:49	01:11	0-0	0	2	0	1	0	0.0000
3- Washington Jr. T/ 10- Mintz D/ 12- Brooks Jr. K/ 31- Grady K/ 34- Tshiebwe O/	2	04:49	2	03:55	00:54	0-2	-2	0	0	0	0	0.0000
0- Toppin J/ 10- Mintz D/ 12- Brooks Jr. K/ 31- Grady K/ 34- Tshiebwe O/	2	03:55	2	02:39	01:16	0-3	-3	0	0	1	0	0.0000
0- Toppin J/ 10- Mintz D/ 31- Grady K/ 34- Tshiebwe O/ 55- Ware L/	2	02:39	2	00:00	02:39	8-6	2	1	1	2	0	1.1834



Kentucky at LSU

01/04/22 Maravich Assembly Center, Baton Rouge
2021-22 Men's Basketball

Game Time: 6:00 PM
Game Duration: 2:14
Attendance: 11,808

Officials: Joe Lindsay, Mike Nance, Chuck Jones

LSU

Lineup	Quarter On	Time On	Quarter Off	Time Off	Time on Court	Score	Score Diff	Reb	Stl	Tov	Ass	PPP
0- Murray B/ 1- Pinson X/ 4- Days D/ 5- Wilkinson M/ 15- Reid E/	1	20:00	1	15:34	04:26	8-3	5	6	1	0	2	1.1429
0- Murray B/ 2- Gaines E/ 4- Days D/ 5- Wilkinson M/ 13- Eason T/	1	15:34	1	14:19	01:15	2-2	0	0	0	0	0	1.0000
0- Murray B/ 2- Gaines E/ 3- Fudge A/ 4- Days D/ 13- Eason T/	1	14:19	1	14:01	00:18	0-1	-1	0	0	0	0	0.0000
2- Gaines E/ 3- Fudge A/ 4- Days D/ 11- Williams J/ 13- Eason T/	1	14:01	1	13:37	00:24	1-1	0	0	0	0	0	2.2727
2- Gaines E/ 3- Fudge A/ 11- Williams J/ 13- Eason T/ 15- Reid E/	1	13:37	1	11:23	02:14	4-4	0	2	1	3	1	0.8197
1- Pinson X/ 3- Fudge A/ 4- Days D/ 11- Williams J/ 15- Reid E/	1	11:23	1	11:23	00:00	1-0	1	0	0	0	0	2.2727
0- Murray B/ 1- Pinson X/ 3- Fudge A/ 4- Days D/ 15- Reid E/	1	11:23	1	10:36	00:47	0-0	0	1	0	1	0	0.0000
0- Murray B/ 1- Pinson X/ 4- Days D/ 5- Wilkinson M/ 15- Reid E/	1	10:36	1	10:04	00:32	0-1	-1	1	0	1	0	0.0000
0- Murray B/ 1- Pinson X/ 5- Wilkinson M/ 13- Eason T/ 15- Reid E/	1	10:04	1	09:18	00:46	0-3	-3	2	0	2	0	0.0000
0- Murray B/ 2- Gaines E/ 5- Wilkinson M/ 13- Eason T/ 15- Reid E/	1	09:18	1	07:22	01:56	5-5	0	1	0	1	1	1.2500
0- Murray B/ 2- Gaines E/ 4- Days D/ 13- Eason T/ 15- Reid E/	1	07:22	1	06:24	00:58	0-0	0	0	1	0	0	0.0000
0- Murray B/ 1- Pinson X/ 4- Days D/ 5- Wilkinson M/ 13- Eason T/	1	06:24	1	06:12	00:12	0-0	0	1	0	0	0	0.0000
1- Pinson X/ 4- Days D/ 5- Wilkinson M/ 11- Williams J/ 13- Eason T/	1	06:12	1	05:01	01:11	3-0	3	2	0	0	1	3.0000
1- Pinson X/ 5- Wilkinson M/ 11- Williams J/ 13- Eason T/ 15- Reid E/	1	05:01	1	04:12	00:49	2-2	0	2	0	1	0	0.6944
1- Pinson X/ 3- Fudge A/ 4- Days D/ 11- Williams J/ 13- Eason T/	1	04:12	1	03:12	01:00	0-4	-4	1	0	0	0	0.0000
0- Murray B/ 1- Pinson X/ 3- Fudge A/ 4- Days D/ 13- Eason T/	1	03:12	1	02:12	01:00	2-2	0	0	0	0	1	1.0000
0- Murray B/ 1- Pinson X/ 2- Gaines E/ 3- Fudge A/ 13- Eason T/	1	02:12	2	20:00	02:12	7-2	5	6	1	0	1	1.4706
0- Murray B/ 1- Pinson X/ 4- Days D/ 5- Wilkinson M/ 15- Reid E/	2	20:00	2	16:46	03:14	2-10	-8	0	2	1	1	0.3333
0- Murray B/ 1- Pinson X/ 4- Days D/ 5- Wilkinson M/ 13- Eason T/	2	16:46	2	14:26	02:20	2-7	-5	1	0	1	0	0.5000
0- Murray B/ 2- Gaines E/ 3- Fudge A/ 5- Wilkinson M/ 13- Eason T/	2	14:26	2	12:10	02:16	5-3	2	1	0	0	1	2.5000
0- Murray B/ 1- Pinson X/ 4- Days D/ 5- Wilkinson M/ 13- Eason T/	2	12:10	2	10:25	01:45	3-0	3	2	1	1	0	1.2295
1- Pinson X/ 2- Gaines E/ 4- Days D/ 5- Wilkinson M/ 13- Eason T/	2	10:25	2	09:17	01:08	0-0	0	2	0	0	0	0.0000
1- Pinson X/ 2- Gaines E/ 4- Days D/ 5- Wilkinson M/ 15- Reid E/	2	09:17	2	09:17	00:00	0-0	0	0	0	0	0	0.0000
1- Pinson X/ 2- Gaines E/ 3- Fudge A/ 5- Wilkinson M/ 15- Reid E/	2	09:17	2	08:36	00:41	0-0	0	1	0	0	0	0.0000
0- Murray B/ 1- Pinson X/ 2- Gaines E/ 4- Days D/ 15- Reid E/	2	08:36	2	07:46	00:50	1-0	1	0	0	0	0	1.1364
0- Murray B/ 1- Pinson X/ 2- Gaines E/ 4- Days D/ 13- Eason T/	2	07:46	2	06:15	01:31	6-2	4	2	0	0	2	3.0000
0- Murray B/ 2- Gaines E/ 4- Days D/ 5- Wilkinson M/ 13- Eason T/	2	06:15	2	04:49	01:26	0-0	0	2	1	0	0	0.0000
0- Murray B/ 1- Pinson X/ 2- Gaines E/ 4- Days D/ 13- Eason T/	2	04:49	2	03:55	00:54	2-0	2	1	0	0	0	2.0000
0- Murray B/ 2- Gaines E/ 4- Days D/ 5- Wilkinson M/ 13- Eason T/	2	03:55	2	02:39	01:16	3-0	3	2	1	0	1	3.0000
0- Murray B/ 1- Pinson X/ 2- Gaines E/ 4- Days D/ 13- Eason T/	2	02:39	2	01:52	00:47	2-1	1	0	0	0	0	1.0638
1- Pinson X/ 2- Gaines E/ 4- Days D/ 5- Wilkinson M/ 13- Eason T/	2	01:52	2	00:00	01:52	4-7	-3	0	2	3	2	0.8000



Officials: Joe Lindsay, Mike Nance, Chuck Jones

Kentucky

Lineup	Time	Score	Score Diff	Pts/Min	Reb	Stl	Tov	Ass	PPP
0- Toppin J/ 3- Washington Jr. T/ 10- Mintz D/ 31- Grady K/ 34- Tshiebwe O/	09:25	22-11	11	2.3363	7	2	2	6	1.5850
0- Toppin J/ 3- Washington Jr. T/ 10- Mintz D/ 31- Grady K/ 55- Ware L/	04:36	13-6	7	2.8261	6	3	1	1	1.0762
0- Toppin J/ 3- Washington Jr. T/ 12- Brooks Jr. K/ 31- Grady K/ 34- Tshiebwe O/	03:29	0-1	-1	0.0000	7	1	2	0	0.0000
2- Wheeler S/ 3- Washington Jr. T/ 12- Brooks Jr. K/ 31- Grady K/ 34- Tshiebwe O/	03:02	3-5	-2	0.9890	3	0	0	1	0.6000
0- Toppin J/ 10- Mintz D/ 31- Grady K/ 34- Tshiebwe O/ 55- Ware L/	02:39	8-6	2	3.0189	1	1	2	0	1.1834
0- Toppin J/ 4- Collins D/ 10- Mintz D/ 31- Grady K/ 34- Tshiebwe O/	02:37	2-7	-5	0.7643	2	0	1	1	0.8197
3- Washington Jr. T/ 10- Mintz D/ 12- Brooks Jr. K/ 31- Grady K/ 34- Tshiebwe O/	02:27	3-4	-1	1.2245	3	0	0	0	2.0833
3- Washington Jr. T/ 12- Brooks Jr. K/ 23- Hopkins B/ 31- Grady K/ 34- Tshiebwe O/	02:11	3-5	-2	1.3740	2	1	2	1	0.6757
3- Washington Jr. T/ 4- Collins D/ 10- Mintz D/ 31- Grady K/ 55- Ware L/	01:56	4-5	-1	2.0690	1	0	1	1	1.0000
0- Toppin J/ 10- Mintz D/ 12- Brooks Jr. K/ 31- Grady K/ 34- Tshiebwe O/	01:56	0-3	-3	0.0000	1	0	2	0	0.0000
0- Toppin J/ 3- Washington Jr. T/ 4- Collins D/ 10- Mintz D/ 31- Grady K/	01:43	2-5	-3	1.1650	1	0	0	0	0.6667
3- Washington Jr. T/ 11- Allen D/ 12- Brooks Jr. K/ 31- Grady K/ 55- Ware L/	01:11	0-3	-3	0.0000	0	0	0	0	0.0000
3- Washington Jr. T/ 4- Collins D/ 11- Allen D/ 31- Grady K/ 55- Ware L/	01:10	0-0	0	0.0000	3	0	1	0	0.0000
0- Toppin J/ 2- Wheeler S/ 3- Washington Jr. T/ 31- Grady K/ 34- Tshiebwe O/	00:51	0-3	-3	0.0000	1	0	1	0	0.0000
3- Washington Jr. T/ 4- Collins D/ 10- Mintz D/ 11- Allen D/ 55- Ware L/	00:47	0-1	-1	0.0000	1	0	0	0	0.0000
3- Washington Jr. T/ 10- Mintz D/ 11- Allen D/ 12- Brooks Jr. K/ 55- Ware L/	00:00	0-0	0	NaN	0	0	0	0	0.0000



Official Basketball Line Up Analysis - Final
Kentucky at LSU
 01/04/22 Maravich Assembly Center, Baton Rouge
 2021-22 Men's Basketball

Game Time: 6:00 PM
Game Duration: 2:14
Attendance: 11,808

Officials: Joe Lindsay, Mike Nance, Chuck Jones

LSU

Lineup	Time	Score	Score Diff	Pts/Min	Reb	Stl	Tov	Ass	PPP
0- Murray B/ 1- Pinson X/ 4- Days D/ 5- Wilkinson M/ 15- Reid E/	08:12	10-14	-4	1.2195	7	3	2	3	0.7143
0- Murray B/ 1- Pinson X/ 4- Days D/ 5- Wilkinson M/ 13- Eason T/	04:17	5-7	-2	1.1673	4	1	2	0	0.6720
0- Murray B/ 2- Gaines E/ 4- Days D/ 5- Wilkinson M/ 13- Eason T/	03:57	5-2	3	1.2658	4	2	0	1	1.0000
0- Murray B/ 1- Pinson X/ 2- Gaines E/ 4- Days D/ 13- Eason T/	03:12	10-3	7	3.1250	3	0	0	2	2.0492
1- Pinson X/ 2- Gaines E/ 4- Days D/ 5- Wilkinson M/ 13- Eason T/	03:00	4-7	-3	1.3333	2	2	3	2	0.5714
0- Murray B/ 2- Gaines E/ 3- Fudge A/ 5- Wilkinson M/ 13- Eason T/	02:16	5-3	2	2.2059	1	0	0	1	2.5000
2- Gaines E/ 3- Fudge A/ 11- Williams J/ 13- Eason T/ 15- Reid E/	02:14	4-4	0	1.7910	2	1	3	1	0.8197
0- Murray B/ 1- Pinson X/ 2- Gaines E/ 3- Fudge A/ 13- Eason T/	02:12	7-2	5	3.1818	6	1	0	1	1.4706
0- Murray B/ 2- Gaines E/ 5- Wilkinson M/ 13- Eason T/ 15- Reid E/	01:56	5-5	0	2.5862	1	0	1	1	1.2500
1- Pinson X/ 4- Days D/ 5- Wilkinson M/ 11- Williams J/ 13- Eason T/	01:11	3-0	3	2.5352	2	0	0	1	3.0000
1- Pinson X/ 3- Fudge A/ 4- Days D/ 11- Williams J/ 13- Eason T/	01:00	0-4	-4	0.0000	1	0	0	0	0.0000
0- Murray B/ 1- Pinson X/ 3- Fudge A/ 4- Days D/ 13- Eason T/	01:00	2-2	0	2.0000	0	0	0	1	1.0000
0- Murray B/ 2- Gaines E/ 4- Days D/ 13- Eason T/ 15- Reid E/	00:58	0-0	0	0.0000	0	1	0	0	0.0000
0- Murray B/ 1- Pinson X/ 2- Gaines E/ 4- Days D/ 15- Reid E/	00:50	1-0	1	1.2000	0	0	0	0	1.1364
1- Pinson X/ 5- Wilkinson M/ 11- Williams J/ 13- Eason T/ 15- Reid E/	00:49	2-2	0	2.4490	2	0	1	0	0.6944
0- Murray B/ 1- Pinson X/ 3- Fudge A/ 4- Days D/ 15- Reid E/	00:47	0-0	0	0.0000	1	0	1	0	0.0000
0- Murray B/ 1- Pinson X/ 5- Wilkinson M/ 13- Eason T/ 15- Reid E/	00:46	0-3	-3	0.0000	2	0	2	0	0.0000
1- Pinson X/ 2- Gaines E/ 3- Fudge A/ 5- Wilkinson M/ 15- Reid E/	00:41	0-0	0	0.0000	1	0	0	0	0.0000
2- Gaines E/ 3- Fudge A/ 4- Days D/ 11- Williams J/ 13- Eason T/	00:24	1-1	0	2.5000	0	0	0	0	2.2727
0- Murray B/ 2- Gaines E/ 3- Fudge A/ 4- Days D/ 13- Eason T/	00:18	0-1	-1	0.0000	0	0	0	0	0.0000
1- Pinson X/ 3- Fudge A/ 4- Days D/ 11- Williams J/ 15- Reid E/	00:00	1-0	1	∞	0	0	0	0	2.2727
1- Pinson X/ 2- Gaines E/ 4- Days D/ 5- Wilkinson M/ 15- Reid E/	00:00	0-0	0	NaN	0	0	0	0	0.0000