

2012 LSU Gymnastics Media Supplement



Kaleigh Dickson
2011 All-America

Ashley Lee
2010 All-America

Sarie Morrison
2011 All-SEC

TABLE OF CONTENTS

1.....	Table of Contents	17	Scholastic All-Americans
2.....	LSU Radio/TV Roster	18.....	SEC Academic Honor Roll Members
3.....	Bios	19.....	Letterwinners List
4	Bios	20	Perfect 10.00 Scores/All-Time 197 Scores
5.....	Bios	21.....	Highest Individual Event Scores
6	Bios	22.....	Highest Team Event Scores
7.....	Bios	23.....	SEC Championship & Postseason Results
8	Bios	24.....	Opponent Records
9	Bios	25.....	Opponent Records
10.....	Head Coach D-D Breaux Bio	26.....	Top Home Attendance Figures
11	Assistant Coach Bob Moore Bio	27.....	Year-by-Year Results
12	Assistant Coach Philip Ogletree Bio	28.....	Year-by-Year Results
13	Quick Facts	29.....	Year-by-Year Results
14.....	Individual National Champions	30	Year-by-Year Results
15	All-Americans	31.....	Year-by-Year Results
16.....	NCAA/SEC Success	32.....	Year-by-Year Results


RHEAGAN COURVILLE

AA • 5-2 • Fr.-HS
Baton Rouge, La.


KALEIGH DICKSON

AA • 5-0 • So.-1L
Oldsmar, Fla.


CASEY DUVAL

BB, FX • 4-11 • So.-1L
Gretna, La.


LAINIE FLEMING

UB • 5-7 • So.-1L
Glendale, Calif.


MCKENZIE FOX

UB • 5-7 • So.-1L
Waukesha, Wisc.


ERICKA GARCIA

AA • 5-1 • Jr.-2L
Mexico City, Mexico


JANELLE GARCIA

AA • 5-0 • Jr.-2L
Miami, Fla.


LLOIMINCIA HALL

AA • 4-11 • Fr.-HS
Dallas, Texas


JESSIE JORDAN

AA • 5-3 • Fr.-HS
Houston, Texas


RANDI LAU

AA • 5-0 • Fr.-HS
Honolulu, Hawaii


ASHLEY LEE

AA • 5-5 • Sr.-3L
Vacaville, Calif.


MALIAH MATHIS

AA • 5-2 • So.-1L
San Antonio, Texas


SARIE MORRISON

AA • 5-9 • So.-1L
Dallas, Texas


SHELBY PRUNTY

AA • 5-4 • Jr.-2L
Hanover Park, Ill.


BRITNEY TAYLOR

AA • 5-2 • Jr.-TR
Memphis, Tenn.


D-D BREAU

Head Coach
35th Season


BOB MOORE

Assistant Coach
13th Season


PHILIP OGLETREE

Assistant Coach
12th Season


ASHLEIGH CLARE-KEARNEY

Volunteer Assistant Coach
2nd Season



Rheagan Courville

All-Around

5-2 • Fr. • HS

Baton Rouge, La. (LAGTC)

- 2012 First-Team All-SEC
- 2012 Freshman All-SEC
- 2012 SEC Freshman of the Week (vs. Kentucky; vs. Alabama; vs. West Virginia)

FRESHMAN SEASON (2012)

Leads the team with 17 individual titles this season (7 vault, 4 all-around, 2 beam, 2 floor, 2 bars) ... Ranked third nationally on vault with a 9.930 RQS, No. 25 on bars with a 9.875 RQS, No. 19 on floor with a 9.890 RQS and No. 8 in the all-around with a 39.450 RQS ... Earned First-Team All-SEC and Freshman All-SEC honors by placing third in the all-around at the SEC Championship with a 39.450 ... Her third-place all-around finish at the SEC Championship is the best for an LSU gymnast since Susan Jackson tied for second in the all-around in 2009 ... Named SEC Freshman of the Week for the third time after she tied her season high in the all-around with a 39.500 against West Virginia and she also won the vault title with a 9.925 ... Put together three solid events at Iowa where she scored a 9.925 on vault and 9.875's on bars and floor ... Tacked on two more individual titles to her credit by winning vault (9.875) and bars (9.90) against NC State ... Named the SEC Freshman of the Week after she earned her third all-around title of the season and second in a row against Alabama with a 39.450, including 9.90's on vault and floor ... Won three individual titles in the tri-meet against Washington and Seattle Pacific, including the all-around (39.500), vault (9.90) and floor (9.90) ... Earned the beam title with a 9.925 at Florida as she also posted a 39.400 in the all-around, 9.925 on vault and a 9.85 on bars ... Named the SEC Freshman of the Week after she won four of five individual titles against Kentucky, including a career-high 39.450 in the all-around ... Captured the vault, bars, beam and all-around titles against Kentucky ... Her 9.925 on beam against Kentucky is the first time an LSU freshman has scored at least a 9.925 on beam since Lisa Rennie earned a 9.95 at the SEC Championship on March 20, 2004 ... Won the vault title for the second meet in a row with a 9.95 at Georgia ... Became the fifth gymnast in LSU history to score at least two 9.95's on vault in her career ... Tied for the vault title with a career-high 9.95 at Arkansas and finished third in the all-around (and led the team) with a season-best 39.375 ... One of 13 gymnasts in LSU history to score a 9.95 on vault ... Captured her first two individual event titles against Auburn as she posted a 9.925 on vault and a 9.90 on floor ... Joined a list of 15 other LSU gymnasts in school history to score a 9.925 on vault, the fourth-best vault score in team history ... Opened her collegiate career with a 39.175 to finish third in the all-around at the Cancun Classic ... Her 9.875 on vault at the Cancun Classic placed third ... One of the top recruits nationally last season who will look to provide immediate results as an all-arounder from the start of her career ... Did not compete much in the 2011 club season so that she could focus on preparation for her collegiate career.

CLUB/HIGH SCHOOL

Coached by former LSU national champion Susan Jackson at Louisiana Gymnastics Training Center ... Competed as an elite gymnast throughout her club career, most recently as a senior international elite gymnast ... Was a three-time qualifier for the Visa Championships (U.S. National Championships) ... Only competed once in 2011 to focus on her collegiate career, but she earned second place in the all-around, bars and beam at the Metroplex Challenge ... Finished 10th in the all-around at the 2010 Visa Championships ... Placed second in the all-around at both the 2010 Texas National Elite Qualifier and the 2010 Florida National Elite Qualifier, and she captured the beam titles at both meets and won the vault and floor titles at the Texas meet ... Earned a spot on the Junior U.S. National team in 2007 after placing fifth in the all-around at the Visa Championships ... Member of the National Honor Society in 2008 and 2009 ... Attended University Laboratory School in Baton Rouge where she was awarded for the most community service hours as a junior.

PERSONAL

Full name is Rheagan Renée Courville ... Born March 26, 1993 ... Daughter of Aaron and Bridget Courville ... Has one younger brother, Ryan ... Plans to major in business ... Chose to attend LSU because of the academic support and athletic excellence.

COURVILLE'S CAREER HIGHS

Vault: 9.950 (twice; Last: 1-28-12 at Georgia)
 Bars: 9.900 (3-2-12 vs. NC State)
 Beam: 9.925 (twice; Last: 2-10-12 at Florida)
 Floor: 9.900 (four times; Last: 3-16-12 vs. West Virginia)
 All-Around: 39.500 (twice; Last: 3-16-12 vs. West Virginia)

COURVILLE'S CAREER INDIVIDUAL TITLES

Vault: 7
 Bars: 2
 Beam: 2
 Floor: 2
 All-Around: 4
 Total: 17



Kaleigh Dickson

All-Around

5-0 • So. • 1L

Oldsmar, Fla. (LaFleur's)

- 2011 Second-Team All-American (AA)
- 2011 SEC Academic Honor Roll
- 2010 Scholastic All-American
- 2010 SEC Freshman Academic Honor Roll

SOPHOMORE SEASON (2012)

Competed in the all-around for the first time this season against West Virginia and earned a 9.825 on beam and 9.80 on floor ... Tied her season high on beam with a 9.825 and also scored a 9.80 on vault at Iowa ... Earned a 9.80 on vault vs. NC State ... Another productive meet at Washington (w/SPU) as she earned 9.80's on beam and floor and a 9.775 on vault ... Tied her career high on beam with a 9.825 at Florida and also tallied a 9.85 on vault and 9.80 on floor ... Earned a season-high 9.85 on floor against Kentucky and added a 9.80 on vault ... Solid meet at Georgia with a 9.825 on vault and 9.80's on beam and floor ... Set a career high with a 9.875 on vault and tied her career best on beam with a 9.825 at Arkansas ... Sat out the Auburn meet with a foot injury and is expected to be ready to compete at Arkansas ... Competed on vault, beam and floor in the opener at the Cancun Classic, posting a 9.80 on floor ... One of the top returning performers from 2011 ... A great leader for the team who always has a positive attitude.

REDSHIRT FRESHMAN SEASON (2011)

Bounced back from a season-ending injury prior to the 2010 season to become one of the team's top all-arounders in 2011 ... Displayed consistency throughout the season with only six falls in 51 total routines ... Earned Second Team All-America honors with a seventh-place finish in the all-around in the first semifinal at the NCAA Championships (4/15) ... Pushed LSU's streak to 19 consecutive years with at least one All-American with her performance at nationals ... Set a career high with a 39.175 all-around score at the NCAA Championships and also tied her career best on vault with a 9.85 ... Tallied season highs of 9.85 on vault, 9.80 on bars, 9.825 on beam, 9.875 on floor and 39.175 in the all-around ... Competed in the all-around in 12 of 13 meets, including the NCAA Championships ... Qualified to nationals by finishing as the top all-arounder not on a qualifying team at the NCAA Athens Regional (4/2) with a 39.075 all-around score ... Best events were vault with a 9.760 average and floor with a 9.748 average ... Scored a 9.80 or higher in eight of 13 floor routines ... Tallied a 39.000 all-around score or higher in six of 12 meets ... Named to the SEC Academic Honor Roll for the second straight year.

FRESHMAN SEASON (2010)

Suffered a knee injury in the fall and was forced to redshirt the season ... Will compete as a redshirt freshman in 2011.

CLUB/HIGH SCHOOL

Trained at LaFleur's Gymnastics in Tampa, Fla., under coaches Jeff LaFleur, Billy West and Amanda Stroud ... Was a three-time Level 10 Junior Olympic National Qualifier ... Placed second on vault and bars at the 2009 Florida state championships and finished second in the all-around ... Came in fourth in the all-around at the 2009 regional for Region 8 of USA Gymnastics and captured first place on vault and second on floor ... Was the 2008 Florida state vault and beam champion and finished second in the all-around ... Captured the all-around title at the 2008 regional with second-place finishes on vault and bars and a third-place mark on floor ... Finished 13th in the all-around at the 2008 national meet ... Placed 10th on bars and 17th in the all-around at the 2007 nationals ... Attended The Academy of the Holy Names High School in Tampa ... Earned status on the Principal and President's Honor Roll all four years ... Was a member of the Beta Club, Red Cross Club and Service Club ... Graduated with a 3.77 grade point average.

PERSONAL

Full name is Kaleigh Elizabeth Dickson ... Born August 15, 1991 ... Daughter of Bob and Joanne Dickson ... Has an older brother, Bobby, and a younger brother, Jack ... Majoring in mass communication at LSU ... Chose LSU because of the coaches, team and staff as well as the academic programs.

DICKSON'S CAREER HIGHS

Vault: 9.875 (1-20-12 at Arkansas)
 Bars: 9.800 (twice; Last: 2-18-11 vs. Georgia)
 Beam: 9.825 (five times; Last: 3-16-12 vs. West Virginia)
 Floor: 9.875 (3-4-11 vs. New Hampshire)
 All-Around: 39.175 (4-15-11 at NCAA Championships)


Casey Duvall

Balance Beam, Floor Exercise

4-11 • So. • 1L
Gretna, La. (All Star)

• **2011 SEC Freshman Academic Honor Roll**

SOPHOMORE SEASON (2012)

Saw action as an exhibition performer on beam at Iowa and at home versus West Virginia and scored a 9.775 both times ... Performed exhibition routines on beam and floor against NC State ... Exhibited on beam and floor at Washington (w/SPU) and tallied a 9.75 on beam ... Saw action in exhibition on beam and floor at Florida ... Competed in an exhibition on beam at Georgia ... Stepped into the floor lineup and earned a 9.575 on floor at Arkansas ... Tallied a 9.350 on floor against Auburn ... Competed on floor at the Cancun Classic but suffered a fall as she scored an 8.375 ... Talented sophomore who will provide great depth as a walk-on for the second-straight season ... Serves as an alternate in the beam and floor lineups ... One of the best students on the team who also brings a positive attitude to practice every day.

FRESHMAN SEASON (2011)

Served as a specialist on vault, beam and floor and provided quality depth on those events all season ... Competed twice on beam with a high of 9.350 vs. BYU (2/4) ... Exhibited on beam at the Metroplex Challenge (1/29) and posted a 9.80 ... Also performed exhibition routines on floor against Arkansas (2/11) and Georgia (2/18) ... Named to the SEC Freshman Academic Honor Roll.

CLUB/HIGH SCHOOL

Competed at All Star Gymnastics in Harvey, La., and she was coached by Jackie Latino ... Competed as a level 10 gymnast ... Was a member of the 2009 LHSAA Gymnastics Division I Team champions ... Captured the floor title at the 2010 New Orleans Jazz Invite with a 9.275 and scored a season high 9.375 on floor at the 2010 Purple and Gold Invite ... Took home the beam title at the 2009 Judges Holiday Classic ... Excellent student at Patrick F. Taylor Science and Technology Academy where she maintained a 4.6 GPA, took fourth place in the district science fair for molecular biology and also received the Jefferson Parish Award of Excellence ... Also competed in track in high school.

PERSONAL

Full name is Casey Lynn Duvall ... Born August 17, 1992 ... Daughter of Thomas and Sandra Duvall ... Has one older brother, Ryan ... Plans to major in biochemistry at LSU.

DUVALL'S CAREER HIGHS

Beam: 9.350 (2-4-11 vs. BYU)
 Floor: 9.575 (1-20-12 at Arkansas)


Lainie Fleming

Uneven Bars

5-7 • So. • 1L
Glendale, Calif. (Club Champion)

• **2011 SEC Academic Honor Roll**
 • **2010 Scholastic All-American**

SOPHOMORE SEASON (2012)

Did not compete against NC State, West Virginia or at the SEC Championship ... Tallied a 9.70 leading off on bars against Alabama ... Recorded a 9.725 in the leadoff spot on bars at Washington (w/SPU) ... Posted another new career high for the third-straight week with a 9.775 on bars at Florida ... Earned a new career high for the second-straight meet with a 9.75 on bars against Kentucky ... Set a career high with a 9.725 in the leadoff spot on bars at Georgia ... Suffered a fall in the leadoff spot on bars at Arkansas and tallied an 8.450

... Led off the bars lineup versus Auburn and scored a 9.650 ... Earned the No. 3 spot in the bars lineup at the Cancun Classic and scored a 9.70 ... An excellent student who adds quality depth to the bars lineup ... Saw action at the end of last season and is pushing for a spot in the lineup to open the 2012 season.

REDSHIRT FRESHMAN SEASON (2011)

Bars specialist who competed twice in the event in the final two meets of the season ... Gained great experience by competing in exhibition on bars early in the season ... Scored a 9.525 at the SEC Championship (3/19) and a career-high 9.650 at the NCAA Athens Regional (4/2) ... Provided a 9.725 on bars exhibition against New Hampshire (3/4) ... Earned SEC Academic Honor Roll recognition.

FRESHMAN SEASON (2010)

Did not compete as she had a wrist injury before the season began ... Will compete as a redshirt freshman in 2011 ... Earned NACGC/W Scholastic All-American honors as she maintained a 4.0 grade point average.

CLUB/HIGH SCHOOL

Trained at Club Champion Gymnastics under coaches Zak Johnson, Jennifer Dantzcher and Ivan Bereznyakov ... Captured the bars title at the 2007 California state championships ... Also won the bars titles at the 2007 LA Classic and the 2008 Surf City Classic ... Attended Mayfield Senior School ... Member of the California Scholarship Foundation for all four years and was a member of the national honor society her junior year ... Graduated with a 4.2 grade point average ... Received the class Latin award three years including AP Latin ... Also received the AP-US class award in 2008 and the math class award in 2007, 2008 and 2009.

PERSONAL

Full name is Elaine Theresa Fleming ... Goes by "Lainie" ... Born February 25, 1991 ... Daughter of Mark and Dara Fleming ... Has three younger brothers - Steven, Ryan and Luke ... Majoring in biological sciences ... Chose LSU because she has family in Louisiana and has always wanted to compete for LSU.

FLEMING'S CAREER HIGHS

Bars: 9.775 (2-10-12 at Florida)


McKenzie Fox

Uneven Bars

5-7 • So. • 1L
Waukesha, Wisc. (Midwest Twisters)

• **2011 SEC Freshman Academic Honor Roll**

SOPHOMORE SEASON (2012)

Performed an exhibition bars routine versus West Virginia and scored a 9.775 ... Did not compete at Iowa ... Scored a 9.125 on bars versus NC State ... Suffered a fall to finish with a 9.225 on bars at Washington (w/SPU) ...

Posted a career-high 9.75 on bars against Kentucky ... Scored a 9.30 on bars in her first action of the year at Georgia ... Did not compete at the Cancun Classic, against Auburn or at Arkansas ... Missed most of 2011 after injuring her achilles tendon early in the season ... Has returned in strong fashion from her injury and is pushing for a spot in the bars lineup in 2012.

FRESHMAN SEASON (2011)

A bars specialist who competed in the event in the first two meets of the season ... Suffered a season-ending foot injury in practice prior to the Metroplex Challenge (1/29) ... Scored a 9.225 at Oregon State (1/7) to open the season and posted a 9.650 at Auburn (1/14) a week later ... Earned a 9.60 in an exhibition routine against Florida (1/21) ... Provides excellent depth on bars for the Tigers ... Named to the SEC Freshman Academic Honor Roll.

CLUB/HIGH SCHOOL

Competed for Jack and Lori Nettesheim at Midwest Twisters Gymnastics in Hartland, Wisc. ... Was a seven-time regional championships qualifier for Region 4 ... Qualified for the 2009 J.O. National Invitation Tournament ... Captured the level 9 vault title in 2005 ... Outstanding student who maintained a 4.0 GPA at Waukesha West High School ... Member of the national honor society in 2009-10, honor roll from 2006-10 and earned recognition with the national society of high school scholars from 2008-10.

PERSONAL

Full name is McKenzie Rae Fox ... Born April 24, 1992 ... Daughter of Bryan and Lisa Fox ... Has one older sister, Bryanna, who also attends LSU ... Plans to major in Kinesiology with a focus in human movement.

FOX'S CAREER HIGHS

Bars: 9.750 (2-3-12 vs. Kentucky)


Ericka Garcia

All-Around

5-1 • Jr. • 2L

Mexico City, Mexico (Regio Club Gimnastico)

- 2012 SEC Community Service Team
- 2011 SEC Community Service Team

JUNIOR SEASON (2012)

Named to the SEC Community Service Team for the second straight season ... Serves as the leadoff performer on beam for LSU ... Did not compete at Iowa or vs. West Virginia ... Posted

a 9.75 on beam against NC State ... Sat out the Alabama meet to rest ... Scored a 9.75 on beam at Washington (w/SPU) ... Tied her career high for the second time this season with a 9.85 on beam at Florida ... Tallied a 9.825 on beam in the leadoff spot against Kentucky ... Tied her career high with a 9.85 on beam in the leadoff spot at Georgia ... Has returned to the beam lineup and led off for the second straight meet at Arkansas, scoring a 9.775 ... Led off the beam lineup against Auburn and delivered a solid 9.750 in her first routine since tearing her ACL last season ... Did not compete at the Cancun Classic.

SOPHOMORE SEASON (2011)

Competed only on vault, bars and beam in the first seven meets and became an all-arounder in the next two ... Tore her ACL at Alabama (3/11) at the end of her floor routine and missed the final two meets of the season ... Tallied a 39.000 all-around score in her second meet as an all-arounder against New Hampshire (3/4) ... Scored season highs of 9.775 on vault, 9.775 on bars, 9.85 on beam, 9.775 on floor and 39.000 in the all-around ... Tied her career high and captured her first individual title on beam with a 9.85 versus BYU ... Served as the anchor on beam and leadoff performer on vault and bars for the nine meets she competed ... Named to the 2011 SEC Community Service Team.

FRESHMAN SEASON (2010)

Was a mainstay in the vault, bars and beam lineups ... Sat out the first six meets of the season after joining the team in January ... Outstanding on vault all season as she scored below a 9.80 only once in eight meets ... Posted season highs of 9.875 on vault, 9.875 on bars and 9.85 on beam ... Earned her season-high 9.875 on vault and bars against Oregon State (3/5) ... Tallied her season-high 9.85 on beam at the SEC Championship (3/27) where she also posted a 9.85 on vault ... Received SEC Co-Freshman of the Week honors after she scored 9.825's on bars and beam and a 9.80 on vault versus Iowa (3/12) to help lead LSU to its season-high team score ... Ended the season with 9.80's on bars and beam at the NCAA Championship semifinal (4/22) and also scored a 9.75 on vault ... Scored a 9.80 or higher on vault in her first seven meets ... Posted three scores of 9.80 or higher on bars and three on beam ... Ranked third on the team with a 9.819 vault average ... Averaged a 9.731 on bars and 9.703 on beam.

CLUB/HIGH SCHOOL

Trained at Regio Club Gimnastico in Monterrey, Mexico, under coaches Antonio Barraza and Teresa Lopez ... Has represented Mexico in several international meets ... Competed at the 2009 Artistic Gymnastics World Championships in London, England ... Finished fifth in the all-around and on vault at the Hungarian Grand Prix 2009 Artistic Gymnastics Championships ... Captured the vault title and placed third on beam at the 33rd Memorial Joaquim Blume 2008 Artistic Gymnastics World Cup in Barcelona, Spain ... Earned third place on vault and ninth in the all-around at the 2008 Pacific Rim Gymnastics Championships in San Jose, Calif. ... Member of the Mexican national team that finished in third place at the XV Pan American Games in Rio de Janeiro, Brazil, in 2007 ... Attended Preparatoria No. 3 High School.

PERSONAL

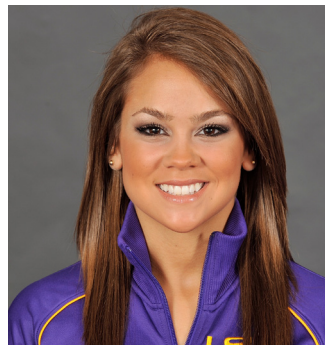
Born August 13, 1990 ... Full name is Ericka Marlene Garcia Aguiñiga ... Daughter of Angeles Aguiñiga and the late Fernando Garcia ... Majoring in dietetics.

GARCIA'S CAREER HIGHS

Vault: 9.875 (3-5-10 vs. Oregon State)
Bars: 9.875 (3-5-10 vs. Oregon State)
Beam: 9.850 (four times; Last: 2-10-12 at Florida)
Floor: 9.775 (3-4-11 vs. New Hampshire)
All-Around: 39.000 (3-4-11 vs. New Hampshire)

GARCIA'S CAREER INDIVIDUAL TITLES

Beam: 1
Total: 1


Janelle Garcia

All-Around

5-0 • Jr. • 2L

Miami, Fla. (Orlando Metro)

- 2011 SEC Academic Honor Roll
- 2011 LSU Female Student-Athlete Volunteer of the Year
- 2010 Scholastic All-American
- 2010 SEC Freshman Academic Honor Roll

JUNIOR SEASON (2012)

Has yet to compete this season ... A two-year

contributor who looks to earn a spot in the lineup in 2012 ... An outstanding student-athlete who demonstrates leadership in the classroom and community.

SOPHOMORE SEASON (2011)

Contributed on vault, beam and floor ... Trained as an all-arounder and provided outstanding depth ... Scored a career-high 9.80 on floor against Georgia (2/18) and also posted a 9.775 on floor versus BYU (2/4) ... Tallied a season-high 9.725 on beam against Florida (1/21) and earned back-to-back 9.75's on vault at the Metroplex Challenge (1/29) and versus BYU ... Competed on beam in six of 12 meets and saw action on floor five times ... Earned a spot on the SEC Academic Honor Roll for the second straight year ... Named the LSU Female Student-Athlete Volunteer of the Year for her commitment to community service.

FRESHMAN SEASON (2010)

Saw limited action but provided valuable depth on all four events ... Competed once on floor at the Lady Luck Invitational (1/15) and competed once on bars at Florida (1/29) where she posted a 9.70 ... Will look to provide depth and compete for a spot in the lineups as a sophomore ... Named a NACCG/W Scholastic All-American and a member of the SEC Freshman Academic Honor Roll.

CLUB/HIGH SCHOOL

Trained at Orlando Metro Gymnastics in Orlando, Fla., under coaches Jeff Wood and Christi Mitchell ... Was a Level 10 Junior Olympic National Qualifier ... Was the 2008 Region 8 and Florida state bar champion ... Finished third in the all-around in 2008 ... Reached nationals in 2006 and placed 15th in the all-around and ninth on floor ... Was home schooled since fourth grade through A Beka Academy ... A member of the Honor Roll.

PERSONAL

Born October 7, 1991 ... Daughter of Miguel and Marizel Garcia ... Has an older brother, Lester, and an older sister, Yesenia ... Majoring in communication disorders ... Chose to attend LSU because of the coaches as well as the reputation of the program.

GARCIA'S CAREER HIGHS

Vault: 9.750 (twice; Last: 2-4-11 vs. BYU)
Bars: 9.700 (1-29-10 at Florida)
Beam: 9.725 (1-21-11 vs. Florida)
Floor: 9.800 (2-18-11 vs. Georgia)



Lloimincia Hall

All-Around

4-11 • Fr. • HS

Dallas, Texas (Texas Dreams)

- 2012 SEC Floor Exercise Champion
- 2012 First-Team All-SEC
- 2012 Freshman All-SEC
- 2012 SEC Freshman of the Week (vs. Auburn; vs. NC State)

FRESHMAN SEASON (2012)

Has won 10 individual titles this season (seven on floor, two in the all-around, one on vault) ... Ranked No. 3 nationally on floor with a 9.930 RQS and No. 19 nationally in the all-around with a 39.355 RQS ... Became the third LSU gymnast and first Tiger freshman to win the SEC Floor Exercise title as she scored a 9.925 at the SEC Championship to earn First-Team All-SEC and Freshman All-SEC honors as well ... Tied her season high and the nation's highest score with a 9.975 on floor against West Virginia and finished second in the all-around with a 39.450 ... Set a season high with a 9.95 on vault to win her first title in that event at Iowa ... Became the 10th gymnast in LSU history to score a 9.975 or higher on floor when she earned a 9.975 against NC State ... Named the SEC Freshman of the Week for the second time this season after she won the all-around against NC State with a 39.425 and tied the nation's top floor score with a 9.975 ... Won the floor title with a season-high 9.95 against Alabama ... Held out of vault and bars at Washington so she could rest, and she posted a 9.825 on floor and 9.75 on beam ... Scored a season-best 39.450 in the all-around at Florida, tying Rheagan Courville for the highest all-around score in a meet this season ... Tallied a 9.875 on beam and 9.90 on floor at Florida ... Won the floor title against Kentucky with a 9.875 and scored a 9.825 on vault and 9.80 on beam ... Tied her season bests on bars (9.85), beam (9.80) and floor (9.90) at Georgia and won the floor title ... Upped her all-around total to a 39.325 at Arkansas and posted a season-best 9.85 on bars ... Named SEC Freshman of the Week after she won her first all-around title with a 39.200 against Auburn and also captured a share of the floor title with a 9.90 ... Also set a season high with a 9.80 on beam vs. Auburn ... Competed in the all-around at the Cancun Classic and posted a 9.90 on vault in her first event as a Tiger ... Added a 9.85 on floor as the anchor of the event in Cancun ... A solid Level 10 gymnast at the club level who brings a dynamic floor routine to the Tigers in 2012.

CLUB/HIGH SCHOOL

Trained at Texas Dreams where she was coached by Chris Burdette, Kim Zmeskal Burdette, Tiffany Tolnay and Johnnie Rae Schmelzer ... Competed as a level 10 gymnast ... Three-time J.O. National Championships qualifier, competing from 2009-11 ... Finished in the top 10 in the all-around in every appearance at nationals, including a second-place finish in 2010 when she also captured the floor title with a 9.650 ... Won the all-around titles at both the 2011 Texas State Championships and the 2011 Region 3 Championships ... Also captured the floor title at the 2011 regionals and the beam title at the 2011 Texas state meet ... Earned all-around titles at the 2010 Texas State Championships and 2010 Region 3 Championships ... Took home the all-around titles at several meets throughout the 2010 and 2011 club seasons ... Graduated with high honors from the School of Business & Management at Townview Magnet High School, and she was also a Texas Scholar and a member of the National Society of High School Scholars.

PERSONAL

Full name is Lloimincia D'Chelle Hall ... Goes by the nickname Mince ... Born Jan. 27, 1993 ... Born in Garland, Texas and calls Dallas, Texas home ... Daughter of Rev. Lloyd III and Stephanie Hall ... Chose LSU because of the dynamic campus, the academic center and her relationship with the coaches and teammates ... Plans to major in accounting.

HALL'S CAREER HIGHS

Vault: 9.950 (3-9-12 at Iowa)
Bars: 9.850 (1-20-12 at Arkansas)
Beam: 9.875 (2-10-12 at Florida)
Floor: 9.975 (twice; Last: 3-16-12 vs. West Virginia)
All-Around: 39.450 (twice; Last: 3-16-12 vs. West Virginia)

HALL'S CAREER INDIVIDUAL TITLES

Vault: 1
Floor: 7
All-Around: 2
Total: 10



Jessie Jordan

All-Around

5-3 • Fr. • HS

Houston, Texas (HGC/Zenith Elite)

- 2012 Second-Team All-SEC
- 2012 Freshman All-SEC
- 2012 SEC Co-Freshman of the Week (at Georgia)

FRESHMAN SEASON (2012)

Ranked 23rd nationally in the all-around with a 39.305 RQS and 25th on beam with a 9.865 RQS ... Placed sixth in the all-around at the SEC Championship with a 39.350 to earn Second-Team All-SEC and Freshman All-SEC honors ... Tied her career highs on vault (9.90) and floor (9.85) and finished third on beam with a 9.85 at the SEC Championship ... Earned 9.80's on bars and floor against West Virginia ... Led the team with a second-place finish in the all-around at Iowa with a 39.350, including a 9.875 on vault and 9.85's on beam and floor ... Tied her season high on bars with a 9.80 and also earned a 9.85 on beam and 9.825 on floor against NC State ... Produced another solid meet against Alabama with a 9.85 on beam, 9.825 on floor and 9.80 on vault ... Earned a 39.400 all-around total at Washington (w/SPU), including a season-high 9.90 on vault and season-high tying 9.875 on beam and 9.85 on floor ... Captured her second individual title of the year by tying for the vault crown with a 9.90 at Washington ... Tied vault and beam season highs with a 9.875 in both events at Florida ... Tied her season high on floor with a 9.85 against Kentucky and set a new season high with a 9.80 on bars ... Named SEC Co-Freshman of the Week after capturing her first career all-around title with a 39.250 at Georgia, becoming the first LSU gymnast to win the all-around in a meet outside of Baton Rouge since Susan Jackson won the 2010 NCAA All-Around title at the NCAA Championships ... Scored a 39.300 in the all-around at Arkansas as she tied or set new career highs on every event: 9.85 on vault, 9.725 on bars, 9.875 on beam, 9.85 on floor ... Finished second in the all-around against Auburn with a 39.025, and she led LSU with a 9.875 on beam ... Added a 9.850 on floor against Auburn ... Saw action in the all-around in her first meet as a Tiger and scored a 9.80 on floor at the Cancun Classic ... Originally scheduled to join the team for the 2013 season, she graduated high school and enrolled in LSU early ... Joined the team in December and competes as a freshman in 2012.

CLUB/HIGH SCHOOL

Trained at Houston Gymnastics Center under coaches Deliana Vodenitcharova and Roumen Yordanov ... Competed for Zenith Elite where she trained under Tatiana Schegolkova prior to her stint at HGC ... Four-time J.O. Nationals qualifier as a level 10 gymnast, competing in 2007-09 and again in 2011 ... Captured the all-around title at the 2011 Region 3 Championships with a 38.200, and she also finished in the top five on each event, highlighted by second-place finishes on vault (9.725) and beam (9.60) ... Tied for second in the all-around at the 2011 Texas State Championships and also finished second on floor ... Placed in the top 10 of the all-around at nationals in 2007, 2008 and 2009 ... Earned second place on beam in 2008 and third on vault in 2009 at J.O. nationals ... Graduated early from Manvel High School in Manvel, Texas and enrolled in December 2011 at LSU ... Maintained a 3.5 grade point average at Manvel High.

PERSONAL

Full name is Jessie Kay Jordan ... Born March 19, 1994 ... Daughter of John and Shela Jordan ... Has one older brother, J.J., and one younger sister, Jacy ... Calls Houston, Texas her hometown ... Is the first of her family to attend LSU ... Said she chose LSU because it fit what she was looking for.

JORDAN'S CAREER HIGHS

Vault: 9.900 (twice; Last: 3-24-12 at SEC Championship)
Bars: 9.800 (three times; Last: 3-16-12 vs. West Virginia)
Beam: 9.875 (four times; Last: 2-17-12 at Washington [w/SPU])
Floor: 9.850 (six times; Last: 3-24-12 at SEC Championship)
All-Around: 39.400 (2-17-12 at Washington [w/SPU])

JORDAN'S CAREER INDIVIDUAL TITLES

Vault: 1
All-Around: 1
Total: 2



Randi Lau

All-Around

5-0 • Fr. • HS

Honolulu, Hawaii (Kokokahi)

FRESHMAN SEASON (2012)

Posted a 9.825 on vault and a 9.70 on bars at the SEC Championship ... Tied her season highs on bars (9.825) and beam (9.85) against West Virginia and earned the beam title ... Competed in the all-around for only the second time this season at Iowa and scored a 9.825 on vault, 9.80 on bars and 9.775 on floor ... Tied her

season high on beam for the second-straight week with a 9.85 and also scored a 9.80 on bars versus NC State ... Recorded her best meet as a Tiger against Alabama as she earned a 9.85 on vault, season-high 9.85 on beam and a 9.80 on bars ... Posted a season-high 9.90 on vault and season-best 9.825 on beam at Washington (w/SPU) ... Picked up her first career individual title with the 9.9 vault at Washington ... Tallied season highs on bars (9.825) and floor (9.825) at Florida ... Set then season highs again on beam (9.80) and floor (9.80) against Kentucky ... Earned a 9.775 on floor and 9.725 on beam at Georgia ... Earned a 9.80 on bars and a 9.675 on floor at Arkansas ... Competed in the all-around against Auburn and tallied a 9.725 on bars while suffering a fall on the other three events ... Struggled in her first meet as a Tiger with a 9.000 on bars and a 9.125 on beam at the Cancun Classic ... A former U.S. Junior National Team member who brings elite skills to LSU ... Took time off from gymnastics late in her club career and is continuing to regain her form as she enters this season.

CLUB/HIGH SCHOOL

Trained at Kokokahi Gymnastics under coaches Bruce Burns and Suzie Gamble ... Competed as a level 10 gymnast in 2010 and 2011 ... Three-time U.S. Nationals qualifier and three-time J.O. National Championships qualifier ... Captured the beam title and finished third in the all-around at the 2011 Region 2 Championships ... Member of the U.S. National Team as a junior international elite competitor in 2008 after placing fifth on beam and eighth in the all-around at the Visa Championships ... Graduated a year early from Myron B. Thompson Academy in Honolulu, Hawaii ... Member of the National Honor Society in high school.

PERSONAL

Full name is Randi Kili Lau ... Born March 1, 1994 ... Daughter of Robert and Susan Lau ... Has one younger sister, Taylor, and one younger brother, Robby ... Chose LSU because of her relationship with the coaching staff ... Plans to major in biological sciences.

LAU'S CAREER HIGHS

Vault: 9.900 (2-17-12 at Washington [w/SPU])

Bars: 9.825 (twice; Last: 3-16-12 vs. West Virginia)

Beam: 9.850 (three times; Last: 3-16-12 vs. West Virginia)

Floor: 9.825 (2-10-12 at Florida)

All-Around: 38.400 (3-9-12 at Iowa)

LAU'S CAREER INDIVIDUAL TITLES

Vault: 1

Beam: 1

Total: 2



Ashley Lee

All-Around

5-5 • Sr. • 3L

Vacaville, Calif. (Elite)

- 2012 Second-Team All-SEC
- 2011 SEC Academic Honor Roll
- 2010 First Team All-American (VT)

SENIOR SEASON (2012)

Earned a 9.925 to finish second on vault and pick up Second-Team All-SEC honors at the SEC Championship ... Finished with a 9.85 on vault

and 9.80 on floor on Senior Night against West Virginia ... Had her streak of 19 straight meets with at least a 9.80 on vault snapped when she scored a 9.775 versus NC State ... Tied her career high on floor with a 9.825 against Alabama ... Tallied a 9.80 on vault and

a 9.775 on floor at Washington (w/SPU) ... Earned a 9.825 on vault versus Kentucky ... Set a new career high on vault and tied for the event title with a 9.95 at Arkansas ... Became of one only 13 gymnasts in LSU history to score a 9.95 on vault ... Tied her career high on floor with a 9.825 against Auburn and added a solid 9.875 on vault ... Scored a 9.80 on vault and a 9.60 on floor in the Cancun Classic ... The only senior on the team ... Has stepped into a leadership role for the Tigers ... Stepped up her training to be in the floor lineup after going in and out of the lineup the last two seasons ... Poised to compete on vault and floor as a senior.

JUNIOR SEASON (2011)

A mainstay in both the vault and floor lineups ... Led the team with a 9.844 average on vault and never scored below a 9.80 all season ... Competed on vault in all 12 meets and on floor 11 of 12 meets ... Captured three individual titles on vault with a 9.825 at Auburn (1/14), a 9.80 vs. BYU (2/4) and a 9.90 vs. Arkansas (2/11) ... Tied her career high on vault with the 9.9 against Arkansas ... Narrowly missed All-SEC honors with a 9.875 on vault at the SEC Championship (3/19) and also posted a season-high 9.775 on floor at the meet ... Named to the SEC Academic Honor Roll.

SOPHOMORE SEASON (2010)

Named a First Team All-American for scoring a 9.90 on vault in the NCAA Championship Prelims (4/22) ... Solid contributor all season on vault and floor for the Tigers ... Finished tied for ninth nationally on vault with a 9.7625 combined score at the NCAA Individual Event Finals (4/24) ... Second on the team with a 9.821 vault average ... Scored a career-high 9.90 on vault twice - at the NCAA Championships and at the Lady Luck Invitational (1/15) ... Won her first two career individual titles on vault in back-to-back meets versus Iowa (3/12) with a 9.875 and at Centenary (3/19) with a 9.85 ... Registered a season high of 9.825 on floor ... Helped lead the team to an upset of Oregon State (3/5) with a 9.85 on vault and a 9.825 on floor ... Tallied 10 scores of 9.80 or higher on vault in 14 meets, including eight in a row.

FRESHMAN SEASON (2009)

Joined the team in January as a talented vaulter ... Competed three times on vault and scored a 9.625 at Auburn (1/30), a career-high 9.80 at Alabama (2/13) and a 9.775 at Centenary (3/13) ... Provided excellent depth on vault for the Tigers and will look to compete as a regular in the lineup as a sophomore.

CLUB/HIGH SCHOOL

Trained at Elite Gymnastics in Baton Rouge for Johnny Moyal and Jessica Conner ... A 2006 level 10 regional qualifier ... Finished second on vault at the 2006 level 10 California state championships ... Competed in track and field for one week before suffering an injury at Vanden High School.

PERSONAL

Full name is Ashley DeLane Lee ... Born November 23, 1990 ... Daughter of Joe Lee and Nicole Arabia ... Has one older sister Erica and one younger sister Morgan ... Her father Joe attended LSU ... Majoring in sport administration ... Chose to attend LSU because she has family in Baton Rouge and she loves her teammates and the atmosphere.

LEE'S CAREER HIGHS

Vault: 9.950 (1-20-12 at Arkansas)

Floor: 9.825 (three times; Last: 2-24-12 vs. Alabama)

LEE'S CAREER INDIVIDUAL TITLES

Vault: 6

Total: 6



Maliah Mathis

All-Around

5-2 • So. • 1L

San Antonio, Texas (Aerial Athletics)

SOPHOMORE SEASON (2012)

Scored 9.825's on vault and floor at the SEC Championship ... Earned a 9.85 on floor and 9.80 on vault versus West Virginia ... Scored a 9.825 on floor at Iowa ... Registered a season-high 9.90 on floor against NC State in the only event she competed in the meet ... Tallied a 9.85 on floor and 9.80 on vault against Alabama ... Recorded a season-best 9.875 on vault at Washington (w/SPU) ... Scored a 9.75 on vault and 9.125 on floor at Florida ... Competed on floor for the first time this

season and scored a 9.775 against Kentucky, and she added a 9.85 on vault ... Posted a 9.85 on vault at Georgia ... Limited again to only competing on vault and scored a 9.85 at Arkansas ... Only competed on vault against Auburn and scored a 9.775 as she continues to battle an ankle injury ... Did not compete at the Cancun Classic because of an ankle injury but may see action against Auburn ... Hurt her ankle near the end of fall practice and may be limited early in the season ... A strong competitor on three events - vault, beam and floor - who will look to provide solid scores throughout the season ... Anchored the floor lineup as a freshman.

FRESHMAN SEASON (2011)

One of LSU's most dynamic performers ... Provided outstanding scores and routines on vault, beam and floor ... Tied for the nation's top score on floor as she earned a 9.975 against Georgia (2/18) ... Became only the seventh gymnast in school history to score a 9.975 on floor, and that score was the highest of the season for any LSU gymnast on any event ... Ranked 19th nationally on floor with a 9.880 regional qualifying score and led the team with a 9.810 season average in the event ... Also averaged a 9.808 on vault and a 9.631 on beam ... Scored season highs of 9.90 on vault, 9.85 on beam and 9.975 on floor ... Managed to score a season-high 9.9 on vault at Alabama (3/11) after overcoming a scratched cornea in her right eye prior to the meet ... Narrowly missed All-SEC honors by scoring a 9.875 on vault at the SEC Championship (3/19) in Birmingham ... Ranked second on the team in individual titles earned this season with seven - four on floor, two on vault and one on beam ... Vault titles came at Auburn (1/14) with a 9.825 and BYU (2/4) with a 9.80 ... Captured four floor titles in a row at the Metroplex Challenge (1/29) with a 9.875, vs. BYU with a 9.925, vs. Arkansas (2/11) with a 9.90 and against Georgia with the 9.975 ... Beam title came against Arkansas with a 9.85 ... Scored a 9.80 or higher in nine of 12 vaults and seven of 12 floor routines ... Posted a 9.90 or higher three times on floor and once on vault.

CLUB/HIGH SCHOOL

Competed for Heather Schnelzer and Ryan Snider at Aerial Athletics in San Antonio, Texas ... Was a three-time level 10 Junior Olympic National qualifier ... Captured the 2010 all-around and vault titles at the regional championships for Region 3 and placed second on bars, beam and floor ... Took second in the all-around and third on vault at the 2010 Level 10 Texas State Championships ... Won the vault title and finished second in the all-around at the 2009 Region 3 championships ... Captured the all-around, vault and bars titles at the 2010 WOGA Classic ... Career high club scores of 9.85 on vault and 9.70 on floor ... Maintained above a 3.5 GPA in high school.

PERSONAL

Full name is Maliah Nicole Mathis ... Born June 28, 1992 ... Daughter of Carlton and Theresa Mathis ... Has one older sister, Tanita, and one older brother, Carlton ... Majoring in general studies.

MATHIS' CAREER HIGHS

Vault: 9.900 (3-11-11 at Alabama)
Beam: 9.850 (2-11-11 vs. Arkansas)
Floor: 9.975 (2-18-11 vs. Georgia)

MATHIS' CAREER INDIVIDUAL TITLES

Vault: 2
Beam: 1
Floor: 4
Total: 7



Sarie Morrison

All-Around

5-9 • So. • 1L

Dallas, Texas (Elite Champion)

- 2011 Second-Team All-SEC
- 2011 Freshman All-SEC

SOPHOMORE SEASON (2012)

Ranks 24th nationally on bars with a 9.875 RQS ... Earned a 9.825 on bars at the SEC Championship ... Scored a third-straight 9.90 on bars to win her third bars title in a row versus West Virginia ... Won the bars title at Iowa with her second-straight 9.90 in the event ... Became the first LSU gymnast to score a 9.90 on bars this season as she did it against NC State ... Still limited to competing only on bars and she posted a 9.85 in the anchor spot against Alabama ... Earned a 9.80 on bars at Washington (w/SPU) ... Only

missed two meet as she returned to action at Florida where she led the team with a season-high 9.875 on bars ... Had foot surgery after the Arkansas meet and was expected to be out 4-6 weeks ... Only competed on bars against Auburn and Arkansas because of a foot injury ... Competed on vault, bars and beam at the Cancun Classic but pulled out of the floor lineup after injuring her foot ... One of the top all-arounders in the nation who displayed consistency throughout her freshman season.

FRESHMAN SEASON (2011)

Was outstanding in her first season as a Tiger ... Earned Second-Team All-SEC and Freshman All-SEC honors by scoring a second-place 9.90 on vault at the SEC Championship (3/19) ... Led the team with 12 individual titles during the season - five on bars, four on vault and three in the all-around ... Competed in the all-around in 11 of 12 meets ... Led the team on bars with a 9.788 average and served as the anchor of the lineup all season ... Scored season highs of 9.925 on vault, 9.925 on bars, 9.875 on beam, 9.90 on floor and 39.575 in the all-around ... All of her season highs except for her bars score came against Georgia (2/18) ... Earned her 9.925 season high on bars versus New Hampshire (3/4) ... Ranked 16th nationally on vault with a 9.890 regional qualifying score and ranked 22nd nationally on bars with a 9.870 RQS ... Had her best meet of the season against Georgia when she scored a 39.575 all-around total that ranked as the sixth-highest score in the country ... Her 39.575 all-around score against Georgia is also the highest all-around score by an LSU freshman since April Burkholder scored a school-record 39.875 in 2003 ... Named SEC Freshman of the Week after her stellar performance against Georgia ... Won three straight all-around titles against BYU (2/4), Arkansas (2/11) and Georgia ... Became the first freshman to compete in the all-around in her first meet at LSU since April Burkholder in 2003 ... Second on the team with a 9.838 season average on vault ... Tied for fourth in school history on vault and bars with 9.925's, joining a long list of accomplished LSU gymnasts in each event ... Posted a 9.80 or higher in 30 of 46 total routines during the season, including 10 of 12 vaults and 10 of 12 bars routines.

CLUB/HIGH SCHOOL

Competed for Marcus and Jana Harlin at Elite Champion Gymnastics in Plano, Texas ... Trained and competed at the International Elite level in 2005 and 2006 ... Participated at the 2006 U.S. Visa Championships ... Served as the captain of her high school gymnastics team at Lake Highlands High School ... Decided to drop down to level 10 in 2008 and she earned the all-around and bars titles at the regional championships for Region 3 ... Captured the Texas high school all-around and vault titles in 2008 ... Swept first place in the all-around, bars, beam and floor at both the 2008 district and regional championships ... Won the all-around titles at the 2009 Rose City Classic, 2009 WOGA Classic, 2009 Texas Prime Meet and 2009 Houston National Invitational ... Repeated as all-around champion at the 2010 WOGA Classic ... Is a two-time J.O. National qualifier in 2007 and 2009 ... Was named the Dallas Morning News Athlete of the Year in 2008 and 2009 ... Member of the National Honor Society from 2008-09, the Girls Service League in 2008, the Student Council in 2008 and received the Principal's Sportsmanship Award at her high school in 2010.

PERSONAL

Full name is Sarie Lynn Morrison ... Born November 22, 1991 ... Daughter of Tony and Tracie Morrison ... Has one younger brother, Reece ... Comes from an athletic family as her father played football ULM and her mother was a diver at Auburn ... Plans to major in Mass Communication.

MORRISON'S CAREER HIGHS

Vault: 9.925 (2-18-11 vs. Georgia)
Bars: 9.925 (3-4-11 vs. New Hampshire)
Beam: 9.875 (2-18-11 vs. Georgia)
Floor: 9.900 (2-18-11 vs. Georgia)
All-Around: 39.575 (2-18-11 vs. Georgia)

MORRISON'S CAREER INDIVIDUAL TITLES

Vault: 4
Bars: 8
All-Around: 3
Total: 15



Shelby Prunty

All-Around
5-4 • Jr. • 2L
Hanover Park, Ill. (IGI)

- 2011 SEC Academic Honor Roll
- 2010 SEC Freshman Academic Honor Roll

JUNIOR SEASON (2012)

Posted a 9.80 in the leadoff spot on beam at the SEC Championship ... Tied her season high again on beam and placed second with a 9.825 vs. West Virginia ... Tied her season

high on beam with a 9.825 at Iowa to finish third in the event ... Did not compete against NC State ... Returned to the beam lineup as the leadoff competitor against Alabama and scored a solid 9.825 ... Did not compete against Georgia, Kentucky, Florida or Washington (w/SPU) ... Only competed on beam at Arkansas and scored a 9.275 ... Competed on beam and posted a 9.80 against Auburn ... Missed the season opener with an injury ... Displayed tremendous nerves of steel last season as the leadoff performer on three events - bars, beam and floor - at the end of the 2011 season ... Recovering from an injury in her wrist and will be limited in the 2012 season.

SOPHOMORE SEASON (2011)

Solid performer throughout the season on bars, beam and floor ... Led off the beam lineup all season and earned the leadoff spot on bars and floor by the end of the season because of her great poise ... Tied or set new career highs on bars, beam and floor this season ... Led the team with a 9.756 average on beam and tied for third with Kaleigh Dickson on floor with a 9.748 average ... Extremely consistent with only two breaks in 35 routines on the season ... Season highs of 9.80 on bars, 9.875 on beam and 9.85 on floor ... Tied her career high on bars twice with a 9.80 against Georgia (2/18) and at the SEC Championship (3/19) ... Earned a new career mark on beam with a 9.875 at the Metroplex Challenge (1/29) ... Set a career high on floor with a 9.85 versus BYU (2/4) ... Named to the SEC Academic Honor Roll for the second straight year.

FRESHMAN SEASON (2010)

Saw action all season on bars and beam and led off the beam lineup most of the season ... Displayed improved confidence and scores as the season progressed ... Recorded season highs of 9.80 on bars and 9.825 on beam ... Earned her season-high 9.825 on beam at the NCAA Championship semifinal (4/22) and narrowly missed All-America honors as she finished one spot out of the top eight ... Scored her season high of 9.80 on bars in back-to-back meets against Oregon State (3/5) and Iowa (3/12) ... Competed on vault once against Texas Woman's and posted a 9.70 ... Ranked third on the team with a 9.721 average on beam ... Tallied six scores of 9.80 or higher on beam ... Averaged a 9.671 on bars ... Named to the SEC Freshman Academic Honor Roll.

CLUB/HIGH SCHOOL

Competed for Todd Gardner at Illinois Gymnastics Institute in Westmont, Ill. ... Was a two-time Junior Olympic National qualifier ... Captured the 2009 Illinois state title on bars ... Placed 15th in the all-around at the 2007 national championships ... Earned the beam title at the 2007 Region 5 Championships ... Finished sixth on bars and 10th in the all-around at the 2006 nationals ... Was phenomenal at the 2006 Region 5 Championships where she captured the floor title and finished second in the all-around ... Was a member of the honor roll all four years of high school.

PERSONAL

Full name is Shelby Elizabeth Prunty ... Born September 1, 1991 ... Daughter of William and Cindy Prunty ... Has one older sister, Colby ... Majoring in sport administration ... Her mother coaches gymnastics ... Chose to attend LSU because of her relationship with her teammates and coaches.

PRUNTY'S CAREER HIGHS

Vault: 9.700 (2-12-10 vs. Texas Woman's)
 Bars: 9.800 (four times; Last: 3-19-11 at SEC Championship)
 Beam: 9.875 (1-29-11 at Metroplex Challenge)
 Floor: 9.850 (2-4-11 vs. BYU)



Britney Taylor

All-Around
5-2 • Jr. • TR
Memphis, Tenn. (River City Gymnastics)

- 2011 Second-Team All-MAC
- 2010 MAC Freshman of the Year
- 2010 MAC Vault Champion
- 2010 First-Team All-MAC

JUNIOR SEASON (2012)

Performed exhibition vault and a floor routine against NC State ... Joined the team a couple

days prior to the start of the spring semester on Jan. 17, 2012 and has not yet competed in a regular lineup ... Competed in exhibition against Kentucky and scored a 9.725 ... Is eligible to compete immediately for LSU and will train as an all-arounder after transferring from Central Michigan University ... Adds tremendous depth in all four event lineups and will push to compete right away.

SOPHOMORE SEASON AT CENTRAL MICHIGAN (2011)

Battled injuries during the year ... Picked up Second-Team All-MAC honors after a seventh-place finish in the all-around with a 38.900 at the MAC Championship (3/19) ... Posted a 9.80 to finish third on beam at the MAC Championship ... Won event titles on vault and floor with 9.85 scores in the CMU Quad meet (2/24) ... Captured the floor title with a 9.825 at Western Michigan (2/20) ... Posted a 9.80 on vault and a season-best 39.025 in the all-around at the NCAA Tuscaloosa Regional (4/2) ... Earned a career-high 9.825 on bars at New Hampshire (3/7) ... Recorded 28 scores of 9.70 or higher and 10 scores of 9.80 or better.

FRESHMAN SEASON AT CENTRAL MICHIGAN (2010)

Named Mid-American Conference Freshman of the Year ... Earned First-Team All-Mac after becoming the MAC Vault Champion with a 9.825 in the event at the MAC Championship (3/27) ... Competed in the all-around in 11 of 12 meets ... Posted season highs of 9.875 on vault, 9.775 on bars, 9.850 on beam, 9.850 on floor and 39.275 in the all-around ... Finished fourth on beam with a 9.80 and eighth on vault with a 9.850 at the NCAA Central Regional Championships at Kentucky (4/10) ... Tallied 33 scores of 9.70 or higher and 16 scores of 9.80 or better during the season.

CLUB/HIGH SCHOOL

Competed as a Level 10 gymnast for coach Tam Banning at River City Gymnastics ... Qualified for J.O. Nationals five times ... Competed in the Tennessee state championships several times in her club career ... Attended Ridgeway High School where she also participated in dance, cheerleading and played in the marching band.

PERSONAL

Full name is Britney Mychael Taylor ... Born Oct. 15, 1990 ... Daughter of Michael and Bridget Taylor ... Has an older brother, Michael ... Plans to major in sports administration ... Is the first of her family to attend LSU.

TAYLOR'S CAREER HIGHS (ALL AT CENTRAL MICHIGAN)

Vault: 9.875 (twice; Last: 2-21-10 vs. Western Michigan)
 Bars: 9.825 (3-7-11 at New Hampshire)
 Beam: 9.850 (2-28-10 at Northern Illinois)
 Floor: 9.850 (three times; Last: 2-24-11 vs. Alaska, EMU, SEMO)
 All-Around: 39.275 (3-21-10 at Bowling Green)



D-D Breaux

HEAD COACH • 35TH SEASON

With each passing season, LSU gymnastics continues to shine as one of the nation's best programs, and head coach D-D Breaux has been the catalyst behind LSU's sustained success.

Led by Breaux, LSU has seen increasing accomplishments that includes nine NCAA Championships appearances in the last 10 seasons, two Super Sixes in the last four seasons and seven individual national titles since 2002.

Under Breaux's leadership and coaching, LSU gymnasts have begun to reach new heights in individual and team success.

In 2010, LSU reached the NCAA Championships for the ninth-straight year and 22nd time in Breaux's career. Susan Jackson became the first LSU gymnast to capture NCAA All-Around national title as she became LSU's first three-time NCAA champion.

In 2008 and 2009 LSU joined elite company by advancing to the NCAA Super Six Finals as Breaux and the Tigers broke through into the six-team field for the first time in program history to compete for college gymnastics' national championship in 2008. The Tigers finished fifth, beating out rival Alabama, for the best finish in program history since the current NCAA format was implemented in 1993.

In 2009, LSU made a repeat trip to the Super Six to compete for the national title and one day later Breaux coached senior Ashleigh Clare-Kearney to two individual national titles on vault and floor.

As the "Dean of Coaches" at LSU, Breaux has represented the University at the highest level both in the

gym and, most importantly, in the classroom for more than 30 years. Her dedication to the student-athlete on an individual basis has transcended into academic success, community involvement, Coach of the Year honors, SEC Championships, NCAA Regional Championships and top-10 national rankings throughout her tenure.

Now entering her 35th season as the mastermind of the LSU gymnastics program, the fire in Breaux's eyes burns as brightly today as it did on her first day on the job.

During her tenure Breaux has established and maintained LSU's reputation as one of the premier collegiate gymnastics programs in the country. Under her tutelage, the Tigers have finished among the nation's top-10 teams 22 times in 34 seasons, placing a program-best fourth in 1988, fifth in 2008 and sixth on four separate occasions.

LSU has also placed among the top three in regional competition on 26 separate occasions, winning regional titles nine times in three different decades, including back-to-back first-place regional finishes in 2008 and 2009. Her teams have included eight individual national titles, 106 All-America honors and 45 All-SEC selections.

Additionally, Breaux's Tigers won the inaugural SEC Championship title in 1981 and have gone on to finish second four times and third five other times.

For her dedication to the sport and her teams' numerous accomplishments, Breaux has been recognized by her peers time and time again. In the summer of 2009, Breaux received one of the highest honors as she was voted into the USA Gymnastics Region 8 Hall of Fame.

THE D-D BREAUX FILE

Hometown: Donaldsonville, La.

College: LSU, '76

As a Gymnast

Competed at Southeastern Louisiana University in 1972 and 1973. She led Southeastern to a second-place finish at the 1972 AIAW Gymnastics Championships.

Coaching Experience

1974-76	Assistant Coach	Southeastern La.
1978-	Head Coach	LSU

Began her coaching career at Southeastern as a student assistant. Transferred to LSU in 1976 and took over as head coach in 1978 while also working toward her master's degree.

D-D BREAUX NOTABLES

2	NCAA Super Six Finals (2008, 2009)
27	Consecutive NCAA Regional Appearances
22	NCAA Championships Appearances
8	NCAA Individual National Titles
1	Gymnastics Honda Award Recipient
106	All-America Honors
11	NCAA Regional Titles
13	SEC Champions
45	All-SEC Honors
6	SEC Coach of the Year Honors
5	NCAA Central Region Coach of the Year Honors
4	SEC Gymnasts of the Year
106	Scholastic All-America Honors
1	SEC Championship
2009	Named to the USA Gymnastics Region 8 Hall of Fame

D-D BREAUX YEAR-BY-YEAR RECORDS

YEAR	REGULAR SEASON	POST SEASON	NATIONAL FINISH	REGIONAL FINISH	SEC FINISH
1978	9-1	-	9TH*	1ST*	-
1979	8-1-1	-	11TH*	1ST*	-
1980	10-3	-	6TH*	1ST*	-
1981	18-5	-	11TH*	2ND*	1ST
1982	12-5	1-2	-	3RD	3RD
1983	11-6	6-7-1	6TH	3RD	3RD
1984	8-10	-	-	-	4TH
1985	12-13	4-1	-	2ND	4TH
1986	7-9	6-8	9TH	1ST	4TH
1987	13-4	10-7	7TH	2ND	4TH
1988	15-5-1	13-4	4TH	2ND	4TH
1989	17-6	5-1	-	2ND	4TH
1990	16-3	11-6	6TH	2ND	2ND
1991	9-8	9-8	7TH	3RD	3RD
1992	8-14	0-6	-	7TH	5TH
1993	8-9	9-7-1	7TH(T)	2ND	4TH
1994	13-4-1	6-5	8TH	2ND	3RD
1995	14-4	6-5	9TH	3RD	2ND
1996	9-11	4-2	-	3RD	5TH
1997	12-6-1	4-7	12TH	3RD	3RD
1998	15-7	5-6	9TH	3RD	3RD
1999	11-6	6-4	9TH	2ND	4TH
2000	15-4-1	6-4	9TH	2ND	2ND
2001	11-5	3-2	18TH	3RD	4TH
2002	10-10	6-4	8TH	1ST	4TH
2003	10-10	5-5	10TH	2ND	4TH
2004	15-6	7-3	7TH	1ST	3RD
2005	19-4	7-3	9TH	1ST	2ND
2006	14-11	5-5	8TH	2ND	4TH
2007	13-9	6-4	7TH	2ND	4TH
2008	17-6	9-6	5TH	1ST	4TH
2009	16-5	8-7	6TH	1ST	4TH
2010	11-7-1	4-6	9TH	2ND	4TH
2011	5-13	3-2	20TH	3RD	5TH
2012	10-11	--	--	--	4TH
35TH YEAR	421-241-6 (.635)	174-137-2 (.559)			

* AIAW FINISH
REGULAR SEASON RECORDS INCLUDE SEC CHAMPIONSHIP



Bob Moore

ASSISTANT COACH • 13TH SEASON

For more than a decade, Bob Moore has consistently coached the Tigers to be one of the top vaulting lineups in the nation, and in the past four seasons he has shown his mastery of coaching the event.

Moore coached Susan Jackson to the 2008 NCAA vault national title, and he followed that up by coaching Ashleigh Clare-Kearney to the 2009 NCAA vault title while Jackson was the runner up – giving LSU back-to-back national titles in the event. On top of that, Moore guided three Tigers to First-Team All-America status on vault in 2009 – Clare-Kearney, Jackson and Staci Schwitkis.

In 2010, Moore guided Jackson to a second place finish on vault again, and he coached former walk-on Ashley Lee to a ninth place finish – giving LSU back-to-back years with two gymnasts in the national top 10.

With more than 30 years of outstanding coaching across the southeast, Moore received one of the highest honors in his profession by being inducted into the USA Gymnastics Region 8 Hall of Fame in 2011.

Regarded as one of the best vaulting coaches in the country, Moore has been recognized several times for his exceptional work. He was named the NCAA Central Region Assistant Coach of the Year in 2009, marking the third time he has received the distinguished award. Moore first earned the award in 2005, sharing it with fellow LSU assistant Philip Ogletree, and Moore also received the award in 2007.

A longtime Southeastern Conference assistant, Moore begins his 13th season with the LSU gymnastics program, and his presence has been undeniable. He has helped the Tigers maintain their status as one of the nation's premier programs that includes nine NCAA Championships appearances in the last 10 years, two Super Sixes in the last four seasons and seven individual national titles since 2002.

Moore's primary responsibility with the Tigers is vaulting where the team has flourished under his watch as the team has finished in the top 10 of the national rankings in the event seven of his 12 years at LSU, including four straight seasons from 2007-10.

In his 12 seasons at LSU, Moore has coached his athletes to 13 All-America honors on vault, two national titles, and two national runner up finishes. In fact, LSU's one-two finish on vault in 2009 marked only the fourth time in NCAA history that two gymnasts from the same team finished first and second in the vault national finals.

As well as strengthening the Tigers on the vault, Moore plays a significant role with LSU's Bengal Gymnastics program, a highly successful youth age group program that practices in the Tigers' gymnastics training facility.

Moore is also the team's academic coordinator as he works closely with the gymnastics academic advisor to ensure each gymnast is on the right track each season. In Moore's 12 years with the team, LSU has produced 63 Scholastic All-Americans and 97 SEC Academic Honor Roll members.

Moore's expertise was fine tuned at two other SEC programs. Before joining the Tigers, Moore spent six years at the University of Florida where he served as the program's top assistant. To his credit, Moore coached two national champions on the vault, in addition to numerous All-Americans and SEC champions. And prior to his stint in Gainesville, Moore coached for five seasons as an assistant at Auburn.

A native of Birmingham, Ala., Moore graduated from Samford University in 1976 with a degree in general studies with an emphasis in music. Bob is married to the former Sandra Ballard, and "Pops" and "Momme" are the proud grandparents of Isabella, Sophia and David.

THE BOB MOORE FILE

Hometown: Birmingham, Ala.
College: Samford, '76

College Coaching Experience

1989-93	Assistant Coach	Auburn
1994-99	Assistant Coach	Florida
2000-	Assistant Coach	LSU

Vault National Champions Under Moore

Moore has been a collegiate assistant coach for more than 20 years, and in that time he has coached three gymnasts to four NCAA national championships in the event. Below is a list of NCAA Vault National Champions under Moore:

- 1997 - Susan Hines, Florida
- 1998 - Susan Hines, Florida
- 2008 - Susan Jackson, LSU
- 2009 - Ashleigh Clare-Kearney, LSU





Philip Ogletree

ASSISTANT COACH • 12TH SEASON

Philip Ogletree begins his 12th season as an assistant coach with the LSU gymnastics program, and he has been an integral reason for the Tigers' sustained success during his time at LSU.

Working primarily with the Tigers on uneven bars, Ogletree has guided LSU to 12 of the top 13 bars scores in school history, including a school-record 49.650 in 2002. In fact, under Ogletree's guidance the Tigers posted two of the top 10 scores in school history on bars in 2009 as LSU scored a 49.500 against UNC/Illinois-Chicago and a 49.450 versus North Carolina State.

In 2010, Ogletree's bars lineup posted a 49.300 at the NCAA Championships, which was the second-highest team total in the prelims.

Ogletree coached LSU to a top 10 team ranking on bars for seven straight seasons from 2004-10, including a No. 3 ranking in 2005 and a No. 4 ranking in 2009.

Individually, Ogletree's athletes have flourished under his watch, earning 15 All-America honors on the bars, including a school record three athletes in 2010 (Summer Hubbard, Susan Jackson and Samantha Engle) and 2005 (April Burkholder, Annie Gagnon and Lisa Rennie).

Under Ogletree's guidance, Hubbard became the first LSU gymnast to earn three-straight First-Team All-America honors on bars, and she became LSU's first national runner up on bars with a second-place 9.9250 score at the NCAA Individual Event Finals in 2010. Not only did Hubbard earn a runner up spot, but Jackson finished fourth – giving LSU two of the top five gymnasts on bars in 2010.

In addition, Ogletree coached Sharene Mamby to a rare 10.0 on bars during the 2001 season. The performance

marked just the second perfect score on the event in school history.

For his efforts, Ogletree has been recognized by his peers on several occasions as he was named the NCAA Central Region Assistant Coach of the Year in 2004 and then shared that same honor a year later with fellow assistant Bob Moore.

Not only has Ogletree provided outstanding coaching on bars, but he also serves as recruiting coordinator for LSU and has helped the Tigers maintain their status as one of the elite programs in the nation that includes nine NCAA Championships appearances in the last 10 seasons, two Super Sixes in the last four seasons and seven individual national titles since 2002.

Ogletree came to LSU after spending the previous season at the Georgia Gymnastics Academy. He arrived at LSU with 18 years of coaching experience, including 11 with Level 10 gymnasts in Georgia.

While his stop at LSU was his first collegiate stop, he was no stranger to LSU Athletics. During his time at the Atlanta School of Gymnastics, he tutored future LSU greats Abbey Burns and Kim and Kerry Descalopoulos, all natives of Georgia.

In his time as an athlete, Ogletree was a gymnast at the University of Georgia from 1980-82. He later graduated from Georgia State with a Bachelor of Science degree in education in 1992.

Ogletree is married to the former Jill Hickok. The couple has two children, Bridgette, 17, and Jake, 15.

THE PHILIP OGLETREE FILE

Hometown: Atlanta, Ga.

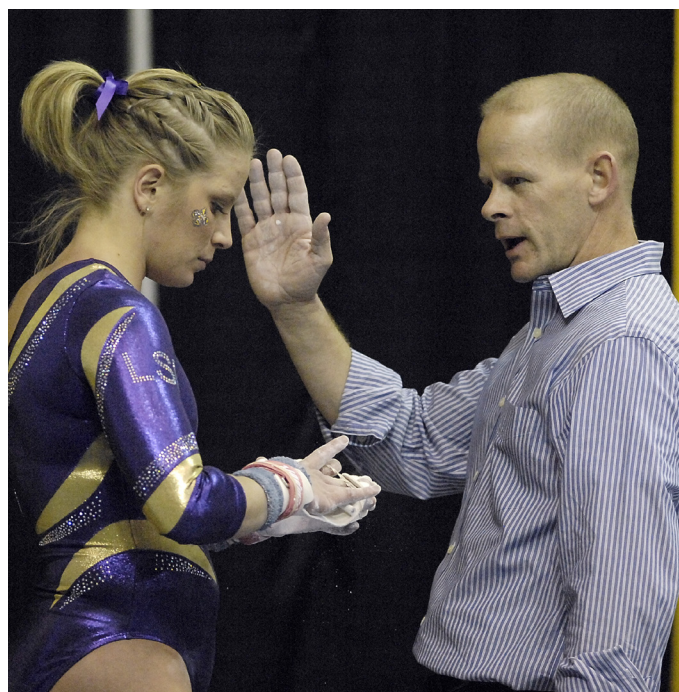
College: Georgia State, '92

College Coaching Experience

2001- Assistant Coach LSU

Recruiting is Key

Since his arrival at LSU, Ogletree has served as the recruiting coordinator for the Tigers, and he has brought in a wealth of talent that has seen LSU capture seven NCAA Individual National Championships since 2002, back-to-back NCAA Super Six appearances in 2008 and 2009 and nine straight NCAA Championships appearances from 2002-10.



LSU QUICK FACTS

UNIVERSITY INFORMATION

Location..... Baton Rouge, La.
 Founded.....1860
 Enrollment..... 28,771
 Nickname.....Tigers or Fighting Tigers
 Colors..... Purple and Gold
 Mascot.....Mike VI (live Bengal Tiger)
 Arena.....Pete Maravich Assembly Center (13,215)
 Conference.....Southeastern
 President.....Dr. John V. Lombardi
 Chancellor.....Dr. Michael V. Martin
 LSU Vice Chancellor/Director of Athletics.....Joe Alleva
 Senior Women's Administrator.....Miriam Segar
 Faculty Representative.....Bill Demastes

COACHING INFORMATION

Head Coach..... D-D Breaux
 Alma Mater, Year.....LSU, 1976
 Overall Record..... 585-367-8 (34 years)
 Career Record..... Same
 Regular Season.....411-230-6 (.640)
 Postseason.....174-137-2 (.559)
 Assistant Coach.....Bob Moore (12th season)
 Assistant Coach.....Philip Ogletree (11th season)
 Vol. Asst. Coach.....Ashleigh Clare-Kearney (2nd season)

TEAM INFORMATION

2011 Overall Record.....8-15
 2011 SEC Record/Finish.....0-6/5th
 2011 NCAA Regional Finish.....Third
 2011 NCAA Championships Finish.....N/A
 2011 High Score.....196.350
 Letterwinners Returning/Lost.....10/3
 All-Americans Returning/Lost.....2/1
 Newcomers.....5

GYMNASTICS HISTORY

Program Founded.....1975
 NCAA Individual Championships.....8
 NCAA Postseason Appearances.....29
 NCAA Championships Appearances.....22
 NCAA Super Six Appearances.....2
 NCAA Championships.....0
 NCAA Regional Titles.....11
 Conference Championships.....1
 All-Americans.....106
 All-Time Record in the PMAC.....238-53-3 (37 years)

SPORTS INFORMATION

Sports Information Director.....Michael Bonnette
 Gymnastics Contact.....Jake Terry
 Office Phone Number.....(225) 578-7678
 E-mail Address.....jerry9@lsu.edu
 Sports Information Fax Number.....(225) 578-1861
 Web site.....www.LSUsports.net
 Official Facebook Page.....www.Facebook.com/LSUgym
 Official Twitter Account.....@LSUgym

SPORTS INFORMATION ADDRESS

Mailing Address:
 LSU Sports Information
 Athletics Administration Building
 Baton Rouge, LA 70803

Overnight Address:
 LSU Sports Information
 LSU Athletics Administration Building
 Nicholson Dr. at N. Stadium Dr.
 Baton Rouge, LA 70803

TELEVISION

Director of Television.....Kevin Wagner
 Manager of Television.....John Schiebe
 Television Producer.....David Landry

PHONE DIRECTORY

Athletics Department.....(225) 578-8001
 Sports Information Office.....(225) 578-8226
 LSU Gymnastics Office.....(225) 578-5050

LIVE STATS/VIDEO

Live statistics and video will be available at all LSU gymnastics home meets.
 To view the stats and video, log on to www.LSUsports.net prior to the meet.

LIVE AUDIO

A live audio Internet broadcast will be available for free in the Geaux Zone on www.LSUsports.net for every LSU gymnastics away meet.
 "Voice of LSU Gymnastics" and Play-by-Play.....Mike Smith
 Color Analyst.....Ashleigh Clare-Kearney
 Color Analyst.....Sara Pollock

2012 ROSTER

Name	Events	Ht.	Cl.	Hometown/Previous School (Club)
Rheagan Courville	AA	5-2	Fr.	Baton Rouge, La./University (LAGTC)
Kaleigh Dickson	AA	5-0	So.	Oldsmar, Fla./Academy of the Holy Names (LaFleur's)
Casey Duvall	BB, FX	4-11	So.	Gretna, La./P.F.T. Science and Technology Academy (All Star)
Lainie Fleming	UB	5-7	So.	Glendale, Calif./Mayfield (Club Champion)
Mckenzie Fox	UB	5-7	So.	Waukesha, Wisc./West (Midwest Twisters)
Ericka Garcia	AA	5-1	Jr.	Mexico City, Mex./Preparatoria No. 3 (Regio Club Gimnastico)
Janelle Garcia	AA	5-0	Jr.	Miami, Fla./A Beka Academy (Orlando Metro)
Lloimincia Hall	AA	4-11	Fr.	Dallas, Texas/Townview Magnet Center (Texas Dreams)
Jessie Jordan	AA	5-3	Fr.	Houston, Texas/Manvel (Houston Gym Center/Zenith Elite)
Randi Lau	AA	5-0	Fr.	Honolulu, Hawaii/Myron Thompson Academy (Kokokahi)
Ashley Lee	AA	5-5	Sr.	Vacaville, Calif./Vanden (Elite)
Maliah Mathis	AA	5-2	So.	San Antonio, Texas/BJU Press Homeschool (Aerial Athletics)
Sarie Morrison	AA	5-9	So.	Dallas, Texas/Lake Highlands (Elite Champion)
Shelby Prunty	AA	5-4	Jr.	Hanover Park, Ill./Bartlett (IGI)
Britney Taylor	AA	5-2	Jr.	Memphis, Tenn./Central Michigan (River City Gymnastics)

PRONUNCIATION GUIDE

Kaleigh Dickson.....KAY-lee
 Janelle Garcia.....juh-NELL
 Maliah Mathis.....muh-LEE-uh
 Sarie Morrison.....SAIR-ee (rhymes with Mary)
 Shelby Prunty.....PRUN-tee
 Lloimincia Hall.....Luh-MEN-see-uh

INDIVIDUAL NATIONAL CHAMPIONS



Jeanie Beadle

1977 AIAW Balance Beam National Champion

A pioneer in LSU gymnastics history, Jeanie Beadle won the Tigers' first individual national championship, claiming the AIAW beam title in 1977. She competed for LSU from 1976-80 and earned All-America status in 1977 and 1978. Her national title marked the first individual title for any female student-athlete in LSU history, and her All-America honors were also a first for a female student-athlete at LSU. As the leader of the team during her career,

Beadle guided the Tigers to three straight first-place finishes at the AIAW Regionals. For all her accomplishments and firsts at LSU, the Baton Rouge native was inducted into the LSU Athletics Hall of Fame in 1999.



Ashleigh Clare-Kearney

2009 NCAA Vault National Champion
2009 NCAA Floor Exercise National Champion

Ashleigh Clare-Kearney finished her outstanding career April 18, 2009, by becoming LSU's first two-time national champion as she captured the vault national title with a 9.900 average and the floor national title with a 9.950 score in Lincoln, Neb. The five-time First Team All-American capped her senior season by earning NCAA Central Region Gymnast of the Year recognition, and she recorded her third straight First Team All-SEC honor after repeating as SEC Floor Exercise Champion. She was also the SEC Gymnast of the Year as a junior as she became LSU's second SEC All-Around champion in 2008.

Clare-Kearney ended her career as LSU's all-time leader in individual titles as she finished with 114, and she was instrumental in leading the Tigers to back-to-back NCAA Super Six appearances in 2008 and 2009.



Nicki Arnstad

2002 NCAA Floor Exercise National Champion

Nicki Arnstad capped an exceptional four-year career by winning the NCAA floor title at the 2002 national championships in Tuscaloosa, Ala. In the final performance of her career, Arnstad tallied a 9.950 to claim LSU's first NCAA individual national title. She earned a total of four All-America honors during her career as she was recognized twice on the floor and twice in the all-around. Also a two-time First Team All-SEC performer, she still shares the school record on the floor exercise (10.00), posting the perfect score twice during her senior season including at the NCAA Central Regional to lead LSU to the NCAA Championships.



Susan Jackson

2008 NCAA Vault National Champion
2010 NCAA All-Around National Champion
2010 NCAA Balance Beam National Champion

Susan Jackson became LSU's first gymnast to win a national title before her senior season as she earned the vault national title with a 9.8563 average as a sophomore at the 2008 NCAA Championships in Athens, Ga. After finishing as national runner up on vault in 2009 behind Ashleigh Clare-Kearney, Jackson went out on top as a senior in 2010 by capturing two more national titles to become LSU's first three-time champion. She tallied a 39.625

all-around score at the NCAA Championships in Gainesville, Fla., to earn LSU's first All-Around national title, and two days later she punctuated her career with a near-flawless performance to earn the beam national title with a 9.9625 score. Displaying consistency all season as a senior, Jackson was named the SEC Gymnast of the Year and NCAA Central Region Gymnast of the Year, and she became the first LSU gymnast to receive the prestigious AAI Award and Gymnastics Honda Sports Award that both go to the nation's top gymnast. Jackson further cemented her legacy by winning 11 all-around titles in 2010, breaking a 30-year-old school record for the most in a single season.



April Burkholder

2006 NCAA Balance Beam National Champion

One of the most decorated gymnasts in LSU history, April Burkholder ended a stellar four-year career by winning the national beam title at the 2006 NCAA Championships. In her final meet as a Tiger, Burkholder posted a 9.9125 on the beam in Corvallis, Ore., to become LSU's second beam national champion. She recorded a school record 14 All-America honors during her career and was named to the All-SEC team four times. Burkholder was also selected as both the NCAA Central Region and SEC Gymnast of the Year twice (2004 and 2005) and was named the SEC Freshman of the Year in

2003. She is also second in school history with eight perfect 10.00's and the only Tiger with at least one on three different events - scoring four on floor, two on vault and two on beam.

TOTAL ALL-AMERICA HONORS - 106

1977

Jeanie Beadle

1978

Jeanie Beadle
Jamie Middleton

1980

Jolaine Mighton
Sandra Smith (VT, FX)

1981

Sandra Smith

1982

Sandra Smith (VT)

1983

Sandra Smith

1986

Angie Topham (BB)

1987

Jennifer Lyerly (VT)

1988

Patti Kieckhefer (BB)

1990

Rachelle Fruge' (BB, FX, AA)
Elizabeth Wilson (UB)

1993

Kristine McDonald (VT)
Jennifer Wood (VT, UB, AA)

1994

Aida Canovas (BB)
Jennifer Wood (FX)

1995

Kristy Savoie (FX, AA)
Jennifer Wood (VT)

1996

Jennifer Wood (VT, UB, FX, AA)

1997

Colleen Barger (BB)
Amy McClosky (BB, FX)

1998

Colleen Barger (BB)
Abbey Burns (UB, AA)
Amy McClosky (BB)

1999

Sharyn MacEachern (VT)
Stacey Wegener (BB)
Colleen Barger (BB)

2000

Beth Boudreaux (BB)
Abbey Burns (UB)
Kim Descalopoulos (VT)
Sharyn MacEachern (VT)
Stacey Wegener (BB)

2001

Nicki Arnstad (FX, AA)

2002

Nicki Arnstad (FX, AA)
Lauren Companioni (FX)
Kristin Uransky (UB)

2003

Annie Gagnon (UB)

2004

April Burkholder (VT, BB, FX, AA)
Annie Gagnon (UB)

2005

April Burkholder (VT, UB, BB, FX, AA)
Annie Gagnon (VT, UB)
Terin Martinjak (BB)
Lisa Rennie (UB)

2006

April Burkholder (VT, UB, BB, FX, AA)
Kelly Lea (UB)
Terin Martinjak (BB, FX)
Kelly Phelan (FX)
Lisa Rennie (UB)

2007

Nicki Butler (VT, AA)
Kristi Esposito (BB)
Susan Jackson (FX)
Kelly Phelan (BB, FX)

2008

Ashleigh Clare-Kearney (UB, FX)
Summer Hubbard (UB)
Susan Jackson (AA, VT, BB, FX)

2009

Ashleigh Clare-Kearney (VT, UB, FX)
Susan Jackson (AA, VT, BB)
Summer Hubbard (UB)
Staci Schwitkis (VT)
Sabrina Franceschelli (AA)
Kayla Rogers (FX)

2010

Susan Jackson (AA, VT, UB, BB)
Summer Hubbard (UB)
Ashley Lee (VT)
Samantha Engle (UB)

2011

Kaleigh Dickson (AA)

NCAA SUCCESS

NCAA TEAM NATIONAL CHAMPIONSHIPS - 0

NCAA SUPER SIX FINALS APPEARANCES - 2

2008

After several years of narrowly missing out, the LSU gymnastics team broke through the preliminary round of the NCAA Championships in 2008 to advance to the program's first NCAA Super Six Final. In the team's first appearance in the national championship meet LSU beat out rival Alabama to place fifth – the program's highest finish in the Super Six era.

2009

One year later LSU repeated as Super Six participants as the Tigers rallied in the prelims at the 2009 NCAA Championships to advance to the finals. LSU has advanced to the Super Six two out of the last three years, and the Tigers aspire to reach the national title meet once again in 2011 and beyond.

NCAA REGIONAL TEAM CHAMPIONSHIPS - 11

Year	Location	Team Score
1975*	Baton Rouge, La.	79.75
1976*	Baton Rouge, La.	99.90
1977*	Stillwater, Okla.	134.25
1979*	Baton Rouge, La.	137.55
1980*	Baton Rouge, La.	147.65
1986	Baton Rouge, La.	185.25
2002	Baton Rouge, La.	196.450
2004	Baton Rouge, La.	197.500
2005	Durham, N.H.	197.125
2008	Baton Rouge, La.	197.625
2009	Columbus, Ohio	196.875

*AIAW Regional Finish

SOUTHEASTERN CONFERENCE SUCCESS

SEC TEAM CHAMPIONSHIPS - 1

1981

SEC COACH OF THE YEAR - 6

1990	D-D Breaux
1993	D-D Breaux
1994	D-D Breaux (Co-Coach of the Year)
1995	D-D Breaux (Co-Coach of the Year)
2000	D-D Breaux
2005	D-D Breaux

SEC GYMNAST OF THE YEAR - 4

2004	April Burkholder
2005	April Burkholder
2008	Ashleigh Clare-Kearney (Co-Gymnast of the Year)
2010	Susan Jackson

SEC FRESHMAN OF THE YEAR - 1

2003	April Burkholder
------	------------------

SEC CHAMPIONS - 22

1981	Sandra Smith (VT, FX)
1982	Sandra Smith (VT, FX)
1983	Sandra Smith (VT)
1985	Angie Topham (BB)
1988	Jennifer Lyerly (VT)
	Julianne Wilson (VT)
1990	Jami Snopek (VT)
1991	Rachelle Fruge' (BB, AA)
	Elizabeth Wilson (UB)
1994	Jennifer Wood (UB)
1998	Amy McClosky (BB)

2006	April Burkholder (BB)
2008	Ashleigh Clare-Kearney (FX, AA)
	Susan Jackson (VT)
2009	Ashleigh Clare-Kearney (FX)
	Susan Jackson (BB)
2010	Susan Jackson (VT)
2012	Lloimincia Hall (FX)

ALL-SEC HONORS - 47; ALL-SEC GYMNASTS - 30

1981	Lisa Benn
	Jamie Middleton
	Sandra Smith
1982	Sandra Smith
1983	Sandra Smith
1984	Ellen Donaldson
1985	Angie Topham
1987	Mary Spence
1990	Rachelle Fruge'
	Jami Snopek
1991	Rachelle Fruge'
	Elizabeth Wilson
1993	Jennifer Wood
1994	Jennifer Wood
1995	Kristy Savoie
	Jennifer Wood
1996	Jennifer Wood
1997	Stephanie Hyett
	Amy McClosky
1998	Colleen Barger
	Stephanie Hyett
	Amy McClosky
1999	Abbey Burns

2000	Nicki Arnstad
	Shanyn MacEachern
2002	Nicki Arnstad (First Team)
	Rebecca Lightsey (Second Team)
2003	April Burkholder (Second Team)
2004	April Burkholder (First Team)
	Lindsay Beddow (Second Team)
2005	April Burkholder (First Team)
	Nicki Butler (Second Team)
	Lisa Rennie (Second Team)
2006	April Burkholder (First Team)
2007	Ashleigh Clare-Kearney (First Team)
	Lauren Klein (Second Team)
2008	Ashleigh Clare-Kearney (First Team)
	Susan Jackson (First Team)
2009	Ashleigh Clare-Kearney (First Team)
	Susan Jackson (First Team)
2010	Susan Jackson (First Team)
	Gloria Johnson (Second Team)
2011	Sarie Morrison (Second Team)
2012	Rheagan Courville (First Team)
	Lloimincia Hall (First Team)
	Jessie Jordan (Second Team)
	Ashley Lee (Second Team)

FRESHMAN ALL-SEC (BEGAN IN 2009)

2011	Sarie Morrison
2012	Rheagan Courville
	Lloimincia Hall
	Jessie Jordan

TOTAL SCHOLASTICS ALL-AMERICANS - 106
1991

Kristine McDonald
Christine Wetzell
Elizabeth Wilson

1992

Alana Long

1993

Alana Long
Kristy Savoie

1994

Kelly Duffy
Alysia Furgatch
Alana Long
Roxanne St. Romain
Kristy Savoie

1995

Kelly Duffy
Alysia Furgatch
Jennifer Landry
Alana Long
Cindy Marion
Kristy Savoie

1996

Robin Evans
Jennifer Landry
Cindy Marion
Kristy Savoie

1997

Abbey Burns
Kerry Descalopoulos
Robin Evans
Cindy Marion
Amy McClosky

1998

Colleen Barger
Abbey Burns
Leah Concannon
Jennie Conrad
Kerry Descalopoulos
Kim Descalopoulos
Robin Evans
Cindy Marion
Amy McClosky
Stacey Wegener

1999

Colleen Barger
Abbey Burns
Leah Concannon
Jennie Conrad
Kerry Descalopoulos
Kim Descalopoulos
Stacey Wegener

2000

Colleen Barger
Abbey Burns
Marina Degteva
Adrienne Couret
Kerry Descalopoulos
Kim Descalopoulos
Sharene Mamby
Stacey Wegener

2001

Lindsay Beddow
Adrienne Couret
Marina Degteva
Sharene Mamby

2002

Lindsay Beddow
Lauren Companioni
Adrienne Couret
Marina Degteva
Rachel Franzella
Jade Jenkins
Sharene Mamby

2003

Lindsay Beddow
Lauren Companioni
Jade Jenkins
Kelly Lea
Terin Martinjak
Amanda Mueller

2004

Lindsay Beddow
Lauren Companioni
Annie Gagnon
Jade Jenkins
Kelly Lea
Amanda Mueller

2005

Lauren Companioni
Annie Gagnon
Jade Jenkins
Kelly Lea

2006

Kristi Esposito
Lauren Klein
Kelly Lea
Amanda Morales
Kelly Phelan

2007

Kristi Esposito
Lauren Klein
Amanda Morales
Kelly Phelan

2008

Ashleigh Clare-Kearney
Kristi Esposito
Sabrina Franceschelli
Lauren Klein
Amanda Morales

2009

Ashleigh Clare-Kearney
Lauren Klein
Amanda Morales

2010

Kaleigh Dickson
Lainie Fleming
Sabrina Franceschelli
Janelle Garcia

2011

Casey Duvall
Lainie Fleming
Janelle Garcia
Ashley Lee
Shelby Prunty
Staci Schmitz
Sarah Zoldos

SEC ACADEMIC HONOR ROLL MEMBERS

TOTAL SEC ACADEMIC HONOR ROLL SELECTIONS - 144

1987

Angie Topham

1990

Elizabeth Wilson

1991

Kristine McDonald
Christine Wetzel
Elizabeth Wilson

1992

Alana Long
Elizabeth Wilson

1993

Alana Long
Kristy Savoie

1994

Jennifer Landry
Alana Long
Kristy Savoie

1995

Kelly Duffy
Alysia Furgatch
Jennifer Landry
Alana Long
Roxanne St. Romain
Kristy Savoie

1996

Jennifer Landry
Cindy Marion
Amy McClosky
Kristy Savoie

1997

Robin Evans
Cindy Marion
Amy McClosky
Denise Savoie

1998

Colleen Barger
Abbey Burns
Kerry Descalopoulos
Kim Descalopoulos
Robin Evans
Stephanie Hyett
Cindy Marion
Amy McClosky
Denise Savoie
Kellye Smith
Stacey Wegener

1999

Colleen Barger
Abbey Burns
Leah Concannon
Jennie Conrad
Patricia Corbello

Kerry Descalopoulos
Kim Descalopoulos
Stephanie Hyett
Kellye Smith
Stacey Wegener

2000

Colleen Barger
Beth Boudreaux
Abbey Burns
Patricia Corbello
Adrienne Couret
Marina Degteva
Kerry Descalopoulos
Kim Descalopoulos
Stephanie Hyett
Sharene Mamby
Kellye Smith
Stacey Wegener

2001

Beth Boudreaux
Patricia Corbello
Adrienne Couret
Marina Degteva
Sharene Mamby

2002

Beth Boudreaux
Tricia Corbello
Adrienne Couret
Marina Degteva
Sharene Mamby

2003

Lindsay Beddow
Beth Boudreaux
Brooke Cazeaux
Lauren Companioni
Adrienne Couret
Marina Degteva
Rachel Franzella
Annie Gagnon
Jade Jenkins
Rebecca Lightsey
Sharene Mamby
Chelsea Richard
Kristin Uransky

SEC Freshman Academic Honor Roll

Kelly Lea
Terin Martinjak

2004

Lindsay Beddow
Lauren Companioni
Annie Gagnon
Jade Jenkins
Kelly Lea
Terin Martinjak
SEC Freshman Academic Honor Roll
Lisa Rennie

2005

April Burkholder
Lauren Companioni

Megan Durning
Annie Gagnon
Katherine Hilton
Jade Jenkins
Kelly Lea
Rikki L'Heureux
Kelly Phelan
Terin Martinjak
Lisa Rennie

2006

Kelly Lea
Terin Martinjak
Kelly Phelan
Lisa Rennie
SEC Freshman Academic Honor Roll
Lauren Klein
Amanda Morales
Vanessa Rodriguez
Christina Suhr

2007

Kristi Esposito
Lauren Klein
Amanda Morales
Kelly Phelan
Lisa Rennie
SEC Freshman Academic Honor Roll
Sabrina Franceschelli
Summer Hubbard
Kayla Rogers
Yvette Triay

2008

Ashleigh Clare-Kearney
Kristi Esposito
Sabrina Franceschelli
Lauren Klein
Kayla Rogers

2009

Ashleigh Clare-Kearney
Sabrina Franceschelli
Susan Jackson
Lauren Klein
Kayla Rogers

2010

Samantha Engle
Sabrina Franceschelli
Susan Jackson
SEC Freshman Academic Honor Roll
Kaleigh Dickson
Janelle Garcia
Shelby Prunty

2011

Kaleigh Dickson
Samantha Engle
Lainie Fleming
Janelle Garcia
Ashley Lee
Shelby Prunty
SEC Freshman Academic Honor Roll
Casey Duvall

Mckenzie Fox
Sidney Sanabria-Robles

A

Nicki Arnstad (1999-2002)

B

Colleen Barger (1997-2000)

Syreeta Barnett (1994-97)

Jeanie Beadle (1977-78)

Lindsay Beddow (2001-04)

Lisa Benn (1981-84)

Beth Boudreaux (1999-2002)

Brittany Brown (2003-04)

Stephanie Buck (1996)

April Burkholder (2003-06)

Nicki Butler (2004-07)

Abbey Burns (1997-2000)

C

Michelle Camarata (1981)

Aida Canovas (1993-95)

Brooke Cazeaux (2000-03)

Allison Christopher (1986)

Aimee Churchill (1988-91)

Paige Cipolloni (2008-09)

Ashleigh Clare-Kearney (2005, 2007-09)

Lauren Companioni (2002-05)

Leah Concannon (1998-99)

Jennie Conrad (1998-99)

Tricia Corbello (1998-2001)

Adrienne Couret (1999-2002)

Lauren Craig (1983-84)

D

Marina Degteva (1999-2002)

Tammy DeFries (1986-88)

Tracy Delello (1986)

Kerry Descalopoulos (1997-2000)

Kim Descalopoulos (1997-2000)

Kaleigh Dickson (2011)

Ellen Donaldson (1982-84)

Cathy Douglass (1987)

Kelly Duffy (1994-95)

Megan Durning (2003-05)

Amy Duval (1985)

Casey Duvall (2011)

E

Emily Ellis (2005-06)

Samantha Engle (2008-11)

Kristi Esposito (2007-08)

Dionne Estpindel (1981)

Robin Evans (1996-98)

F

Lainie Fleming (2011)

Tricia Fortson (1990)

Mckenzie Fox (2011)

Sabrina Franceschelli (2007-10)

Rachel Franzella (2002-03)

Nancy Frey (1983-84)

Rachelle Fruge' (1988-91)

Alysia Furgatch (1994-95)

G

Annie Gagnon (2002-05)

Ericka Garcia (2010-11)

Janelle Garcia (2010-11)

Teri Gibson (2006)

Amber Goforth (1992-93)

H

Terri Harris (1980)

Sherri Hayes (1977-78)

Katherine Hilton (2003-05)

Ashley Hopson (2001)

Eva Hozman (1989-90)

Summer Hubbard (2007-10)

Stephanie Hyett (1997-2000)

J

Susan Jackson (2007-10)

Jade Jenkins (2002-05)

Gloria Johnson (2009-10)

Jennifer Jones (1994)

K

Lori Kent (1977-80)

Patti Kieckhefer (1986-89)

Lauren Klein (2006-09)

L

Jennifer Landry (1993-96)

Kelly Lea (2003-06)

Ashley Lee (2009-11)

Rikki L'Heureux (2003-05)

Susan Lindblom (1988-90)

Rebecca Lightsey (2000-01)

Alana Long (1992-95)

Larissa Lowing (1992-95)

Jennifer Lyerly (1986-89)

Nikki Lyons (2008)

M

Shanyn MacEachern (1999-2002)

Sharene Mamby (1998-2000, 02)

Cindy Marion (1995-98)

Terin Martinjak (2003-06)

Maliah Mathis (2011)

Amy McClosky (1995-98)

Kristine McDonald (1990-93)

Debbie Menzie (1977-78)

Jamie Middleton (1978-81)

Jolaine Mighton (1980)

Kim Miner (1986)

Cecilia Montani (1984-86)

Amanda Morales (2006-08)

Sarie Morrison (2011)

Amanda Mueller (2001)

Daniela Muzkat (1987)

P

Kelly Phelan (2004-07)

Jennifer Pokrana (1996-97)

Kathy Polko (1986-88)

Shelby Prunty (2010-11)

Q

Elizabeth Qualine (1978-79)

R

Aparna Ray (1994-97)

Pam Reither (1982-85)

Lisa Rennie (2004-07)

Chelsea Richard (2001-03)

Tami Richardson (1985-86)

Vanessa Rodriguez (2006)

Nina Roffey (1986)

Donna Rogers (1984-85)

Kayla Rogers (2007-10)

Roxanne St. Romain (1994-95)

S

Denise Savoie (1996-98)

Kristy Savoie (1993-96)

Staci Schwitkis (2008-09)

Kellye Smith (1997-2000)

Sandra Smith (1980-83)

Jami Snopek (1988-91)

Mary Spence (1985-87)

Michelle Spillman (1987)

Paula Stansbury (1981-84)

Shea Lyn Streeter (1991)

Christina Suhr (2006)

Missy Sweeton (1979)

T

Jessica Thompson (2001)

Lindsey Thompson (2003-05)

Angie Topham (1985-88)

Beth Tostevin (1985-86)

Yvette Triay (2007-08)

Cindy Truman (1986)

U

Kristin Uransky (2001-02)

V

Maureen Valentine (1982-85)

Stephanie Viado (1996)

Kirstie Viens (2009)

W

Marla Walker (1982-85)

Stacey Wegener (1997-2000)

Elizabeth Wilson (1990-93)

Julianne Wilson (1988-90)

SuAnna Wells (1992-93)

Christine Wetzal (1989-91)

Sonja Wojtkun (1992)

Jennifer Wood (1993-96)

Y

Lisa Young (1987)

Z

Sarah Zoldos (2011)

Current gymnasts in bold.

PERFECT 10.00 SCORES

Total: 32

Vault (16)

Jennifer Wood	vs. Alabama	2/18/94
Jennifer Wood	vs. North Carolina State	2/25/94
Jennifer Wood	vs. Kentucky	3/4/94
Jennifer Wood	vs. Georgia	2/17/95
Jennifer Wood	vs. Arizona	2/24/95
Jennifer Wood	vs. Florida	3/3/95
Jennifer Wood	at NCAA Regional Championships	4/7/95
Jennifer Wood	vs. Alabama	2/23/96
Jennifer Wood	vs. New Hampshire/Missouri/Centenary	3/15/96
Stephanie Hyett	vs. Illinois-Chicago	3/7/97
April Burkholder	at Texas Woman's/Arizona	2/23/04
April Burkholder	at Oklahoma	3/11/05
Ashleigh Clare-Kearney	at Super Six Challenge (Fayetteville, Ark.)	1/5/07
Ashleigh Clare-Kearney	vs. Michigan State	2/29/08
Ashleigh Clare-Kearney	at NCAA Regional Championships (Baton Rouge)	4/12/08
Ashleigh Clare-Kearney	vs. North Carolina State	3/7/09

Bars (2)

Syreeta Barnett	vs. Illinois-Chicago	3/7/97
Sharene Mamby	vs. Denver	1/26/01

Beam (4)

Amy McClosky	vs. New Hampshire/Missouri/Centenary	3/15/96
April Burkholder	at Centenary	3/12/04
Terin Martinjak	at Centenary	3/12/04
April Burkholder	at Oklahoma	3/11/05

Floor (10)

Rachelle Fruge'	vs. Florida	3/15/91
Nicki Arnstad	at Super Six Challenge	1/11/02
Nicki Arnstad	at NCAA Central Regional Championships	4/6/02
April Burkholder	at Centenary/Texas Woman's	3/21/04
April Burkholder	vs. Alabama	1/23/04
April Burkholder	vs. Kentucky	2/20/04
Nicki Butler	at Texas Woman's/Arizona	2/23/04
Terin Martinjak	at Texas Woman's/Arizona	2/23/04
April Burkholder	vs. Arkansas	2/4/05
Ashleigh Clare-Kearney	vs. Michigan St.	2/29/08

ALL-TIME 197 SCORES - CHRONOLOGICAL ORDER

TOTAL 197 Scores - 26

3/7/97	197.150 vs. Illinois-Chicago (W, 197.150-194.075)
3/1/02	197.500 vs. Kentucky (W, 197.500-194.750)
3/14/02	197.675 vs. Centenary/Rhode Island (1st, R.I. 191.700; Cent 189.450)
3/21/03	197.225 at Centenary/Texas Woman's (1st, Cent 194.600; TW 194.575)
2/13/04	197.300 at Georgia (L, 198.050-197.300)
2/20/04	197.375 vs. Kentucky (W, 197.375-194.875)
2/23/04	197.100 at Texas Woman's w/Arizona (1st, UA 197.050; TW 193.475)
2/27/04	197.525 vs. Auburn (W, 197.525-195.600)
3/5/04	197.525 vs. Ohio State (W, 197.525-195.600)
3/12/04	197.650 at Centenary (W, 197.650-194.725)
3/20/04	197.275 at SEC Championships (3rd, UGA 198.175; UA 197.950)
4/2/04	197.500 vs. NCAA Central Regional Championships (1st, Ariz St. 196.500)
1/21/05	197.050 at Alabama (L, 197.175-197.050)
1/28/05	197.250 vs. Michigan State (W, 197.250-191.425)
3/11/05	197.850 at Oklahoma (W, 197.850-195.750)
4/9/05	197.125 at NCAA Northeast Regional Championships (1st, OU 195.550)
2/23/07	197.050 vs. Florida (L, 197.200-197.050)

3/9/07	197.175 vs. Penn State (W, 197.175-196.275)
3/16/07	197.025 vs. Nebraska (W, 197.025-143.750)
2/8/08	197.050 vs. Auburn/West Virginia (W, AU 195.475; WVU 192.750)
2/29/08	197.775 vs. Michigan State (W, 197.775-196.200)
3/2/08	197.050 at Centenary (W, 197.050-193.125)
4/12/08	197.625 vs. NCAA Central Regional Championships (1st, Stanford 197.525)
2/20/09	197.400 vs. North Carolina/Illinois-Chicago (1st, NC 194.775; IC 192.875)
3/7/09	197.150 vs. North Carolina State (W, 197.150-195.725)
3/12/10	197.150 vs. Iowa (W, 197.150-195.400)

Highest Score: 197.850 at Oklahoma - 3/11/05

Consecutive Meets with a 197 Score: 8 - from 2/13/04 to 4/2/04

Season with the Most 197 Scores: 2004 with 8

ALL-TIME EVENT SCORES - INDIVIDUAL

Vault

1. Jennifer Wood	10.00 (nine times)	1994-96
Stephanie Hyett	10.00	1997
April Burkholder	10.00 (twice)	2004-05
Ashleigh Clare-Kearney	10.00 (four times)	2007-09
2. Jennifer Wood	9.975 (five times)	1994-96
Kerry Descalopoulos	9.975	1997
Marina Degteva	9.975	2002
April Burkholder	9.975 (twice)	2003-04
Nicki Butler	9.975 (twice)	2004
Ashleigh Clare-Kearney	9.975 (five times)	2007-08
Susan Jackson	9.975	2008
3. Abbey Burns	9.950	1997
Kerry Descalopoulos	9.950	1997
Shany MacEachern	9.950	2002
Kristin Uransky	9.950	2002
April Burkholder	9.950 (nine times)	2003-06
Nicki Butler	9.950 (eight times)	2004-07
Annie Gagnon	9.950	2004
Ashleigh Clare-Kearney	9.950 (15 times)	2005, 07-09
Kelly Phelan	9.950	2005
Emily Ellis	9.950	2006
Susan Jackson	9.950 (11 times)	2008-10
Rheagan Courville	9.950 (two times)	2012
Ashley Lee	9.950	2012
Lloimincia Hall	9.950	2012
4. Jennifer Wood	9.925 (three times)	1994, 96
Kristy Savoie	9.925	1995
Kerry Descalopoulos	9.925	1997
Stephanie Hyett	9.925	1997
Kellye Smith	9.925	1997
Shany MacEachern	9.925	1999
Kristin Uransky	9.925 (three times)	2001-02
Marina Degteva	9.925	2002
April Burkholder	9.925 (eight times)	2003-06
Nicki Butler	9.925 (five times)	2004-05, 07
Ashleigh Clare-Kearney	9.925 (nine times)	2005, 07-09
Emily Ellis	9.925	2006
Kelly Phelan	9.925	2007
Susan Jackson	9.925 (seven times)	2008-10
Sarie Morrison	9.925	2011
Rheagan Courville	9.925 (three times)	2012

Bars

1. Syreeta Barnett	10.00	1997
Sharene Mamby	10.00	2001
2. Jennifer Wood	9.975	1994
Beth Boudreaux	9.975 (twice)	2002
Annie Gagnon	9.975	2004
3. Jennifer Wood	9.950 (twice)	1994-95
Abbey Burns	9.950	1998
Beth Boudreaux	9.950 (twice)	1999, 2002
Sharene Mamby	9.950 (three times)	2001-02
Marina Degteva	9.950 (twice)	2002
April Burkholder	9.950	2003
Annie Gagnon	9.950 (twice)	2004-05
Lisa Rennie	9.950	2005
Ashleigh Clare-Kearney	9.950 (three times)	2008-09
Susan Jackson	9.950 (twice)	2008, 2010
Staci Schwitkis	9.950	2008
Summer Hubbard	9.950	2010
Samantha Engle	9.950	2010
4. Jennifer Wood	9.925 (twice)	1994
Syreeta Barnett	9.925	1997
Stephanie Hyett	9.925	1997
Stacey Wegener	9.925	1998
Shany MacEachern	9.925	1999
Sharene Mamby	9.925 (three times)	1999, 2002
Abbey Burns	9.925	1999
Beth Boudreaux	9.925	2000
Marina Degteva	9.925 (four times)	2001-02
April Burkholder	9.925 (three times)	2003, 05-06
Katherine Hilton	9.925	2003
Annie Gagnon	9.925 (four times)	2004-05
Lisa Rennie	9.925 (three times)	2004-06
Ashleigh Clare-Kearney	9.925 (three times)	2008-09
Staci Schwitkis	9.925	2008
Sabrina Franceschelli	9.925	2009
Susan Jackson	9.925 (six times)	2009-10
Summer Hubbard	9.925 (five times)	2008-10
Sarie Morrison	9.925	2011

Beam

1. Amy McClosky	10.00	1996
April Burkholder	10.00 (twice)	2004-05
Terin Martinjak	10.00	2004
2. Jennifer Wood	9.975	1995
Amy McClosky	9.975	1996
April Burkholder	9.975 (four times)	2003-05
Lisa Rennie	9.975	2005

Ashleigh Clare-Kearney	9.975	2008
3. Susan Jackson	9.9625 (NCAA Champ.)	2010
4. Amy McClosky	9.950 (four times)	1996-97
Aida Canovas	9.950	1994
Stephanie Hyett	9.950	1998
Stacey Wegener	9.950 (twice)	1999
Abbey Burns	9.950 (twice)	1999
Beth Boudreaux	9.950	2002
April Burkholder	9.950	2003
Terin Martinjak	9.950 (twice)	2003, 05
Lisa Rennie	9.950 (three times)	2004-05
Nicki Butler	9.950	2005
Kelly Phelan	9.950	2005
Ashleigh Clare-Kearney	9.950	2008
Susan Jackson	9.950	2009
5. Beth Boudreaux	9.925 (twice)	1999, 2002
April Burkholder	9.925 (four times)	2003-04, 06
Lauren Companioni	9.925	2003
Megan Durning	9.925	2003
Terin Martinjak	9.925 (twice)	2003, 06
Kelly Phelan	9.925 (twice)	2004-05
Lisa Rennie	9.925 (five times)	2004-05
Annie Gagnon	9.925 (twice)	2005
Ashleigh Clare-Kearney	9.925	2007
Susan Jackson	9.925	2009
Samantha Engle	9.925 (twice)	2010
Rheagan Courville	9.925 (twice)	2012

Floor

1. Rachelle Fruge'	10.00	1991
Nicki Arnstad	10.00 (twice)	2002
April Burkholder	10.00 (four times)	2003-05
Nicki Butler	10.00	2004
Terin Martinjak	10.00	2004
Ashleigh Clare-Kearney	10.00	2008
2. Jennifer Wood	9.975	1995
Nicki Arnstad	9.975	2001
April Burkholder	9.975 (four times)	2004-05
Ashleigh Clare-Kearney	9.975 (three times)	2007, 09
Lauren Klein	9.975	2007
Susan Jackson	9.975 (four times)	2008-09
Maliah Mathis	9.975	2011
Lloimincia Hall	9.975 (two times)	2012
3. Jennifer Wood	9.950 (twice)	1993, 96
Abbey Burns	9.950	1997
Amy McClosky	9.950 (twice)	1998
Stacey Wegener	9.950	1998
Abbey Burns	9.950	1999
Nicki Arnstad	9.950 (twice)	2000-02
Lauren Companioni	9.950	2002
Marina Degteva	9.950 (twice)	2002
April Burkholder	9.950 (eight times)	2003-06
Brittany Brown	9.950	2004
Kelly Lea	9.950	2004
Ashleigh Clare-Kearney	9.950 (nine times)	2005, 07-09
Terin Martinjak	9.950	2005
Kelly Phelan	9.950 (twice)	2005-06
Lauren Klein	9.950	2007
Susan Jackson	9.950 (twice)	2010
Lloimincia Hall	9.950	2012
4. Kristy Savoie	9.925 (twice)	1996
Jennifer Wood	9.925	1996
Amy McClosky	9.925 (five times)	1997-98
Kim Descalopoulos	9.925	1997, 99
Abbey Burns	9.925	1998
Kellye Smith	9.925	1998
Stacey Wegener	9.925 (twice)	1998-99
Beth Boudreaux	9.925 (twice)	1999, 2001
Shany MacEachern	9.925 (three times)	1999-2000
Nicki Arnstad	9.925 (twice)	2001-02
Marina Degteva	9.925 (three times)	2001
Brooke Cazeaux	9.925	2002
Lauren Companioni	9.925 (three times)	2002-03
Rachel Franzella	9.925	2002
Brittany Brown	9.925 (two times)	2003-04
April Burkholder	9.925 (eight times)	2003-06
Jade Jenkins	9.925 (twice)	2003
Terin Martinjak	9.925 (four times)	2004-06
Kelly Phelan	9.925 (eight times)	2004-07
Lisa Rennie	9.925	2004
Ashleigh Clare-Kearney	9.925 (nine times)	2005, 07-09
Lauren Klein	9.925 (four times)	2007
Kristi Esposito	9.925	2008
Kayla Rogers	9.925	2009
Susan Jackson	9.925 (twice)	2009-10
Maliah Mathis	9.925	2011
Lloimincia Hall	9.925	2012

All-Around

1. April Burkholder	39.875	2003
2. April Burkholder	39.825	2005

Ashleigh Clare-Kearney	39.825	2008
4. April Burkholder	39.800	2004
Ashleigh Clare-Kearney	39.800	2008
6. April Burkholder	39.775	2004
Ashleigh Clare-Kearney	39.775	2007
8. Jennifer Wood	39.750	1995
9. Susan Jackson	39.725	2010
10. April Burkholder	39.700	2004
Susan Jackson	39.700	2009
12. Abbey Burns	39.675	1997
April Burkholder	39.675	2004
Ashleigh Clare-Kearney	39.675	2007

ALL-TIME EVENT SCORES - TEAM

Vault

1.	49.625	at Centenary	3/12/04
		NCAA Central Regional Championships	4/12/08
3.	49.550	vs. Centenary	3/18/05
4.	49.525	NCAA Central Regional Championships	4/2/04
		vs. Michigan State	2/29/08
6.	49.500	at NCAA Southeast Regional Championships	4/14/07
		at Arkansas	1/20/12
8.	49.475	vs. Illinois-Chicago	3/7/97
		at NCAA Northeast Regional Championships	4/9/05
		at Florida	2/15/08
11.	49.450	at Oklahoma	3/11/05
		at SEC Championships	3/31/07
		vs. Washington	3/7/08
		at NCAA Championships Semifinal 1	4/16/09

Bars

1.	49.650	vs. Kentucky	3/1/02
2.	49.550	vs. Centenary	2/13/98
		vs. Alabama	2/8/02
4.	49.525	vs. Denver	1/26/01
5.	49.500	vs. Rhode Island/Centenary	3/14/02
		vs. North Carolina/Illinois-Chicago	2/20/09
7.	49.475	at Centenary	3/2/08
8.	49.450	vs. Auburn	1/18/02
		at NCAA Prelims	4/24/08
		vs. North Carolina State	3/7/09
11.	49.425	vs. New Hampshire/Michigan State	3/9/01
		vs. Michigan State	2/29/08
		vs. Florida	2/6/09

Beam

1.	49.725	at Oklahoma	3/11/05
2.	49.550	at Texas Woman's	3/13/05
3.	49.475	at Alabama	3/6/99
		vs. Arkansas	2/28/03
5.	49.450	vs. Centenary/Texas Woman's	2/12/99
		vs. Florida	2/26/99
		vs. Illinois/Illinois-Chicago/Michigan State	3/12/99
		vs. Georgia	3/7/03
		at Centenary	3/12/04
10.	49.425	vs. Kentucky	2/20/04

Floor

1.	49.675	vs. Ohio State	3/5/04
2.	49.600	at Centenary/Texas Woman's	3/21/03
3.	49.575	vs. Missouri	3/14/98
4.	49.550	vs. Centenary/Rhode Island	3/14/02
		vs. Michigan State	1/28/05
		vs. Arkansas	2/4/05
		vs. Michigan State	2/29/08
8.	49.525	NCAA Central Regional Championships	4/2/02
9.	49.500	vs. Centenary/Texas Woman's/Towson	2/9/01
		vs. New Hampshire/Michigan State	3/9/01
		vs. Centenary/Texas Woman's	1/30/04
		vs. Oklahoma	2/24/06
		vs. Penn State	3/9/07
14.	49.475	vs. Florida	2/7/03
		vs. UCLA	3/17/06
		at Centenary	3/23/07
		at Centenary	3/2/08
		vs. North Carolina/Illinois-Chicago	2/20/09

Team

1.	197.850	at Oklahoma	3/11/05
2.	197.775	vs. Michigan State	2/29/08
3.	197.675	vs. Centenary/Rhode Island	3/14/02
4.	197.650	at Centenary	3/12/04
5.	197.625	at NCAA Central Regional Championship	4/12/08
6.	197.525	vs. Auburn	2/27/04
		vs. Ohio State	3/5/04
8.	197.500	vs. Kentucky	3/1/02
		NCAA Central Regional Championships	4/2/04
10.	197.400	vs. North Carolina/Illinois-Chicago	2/20/09
11.	197.375	vs. Kentucky	2/20/04
12.	197.300	at Georgia	2/13/04
13.	197.275	at SEC Championship	3/20/04
14.	197.250	vs. Michigan State	1/28/05
15.	197.225	at Centenary/Texas Woman's	3/21/03
16.	197.175	vs. Penn State	3/9/07
17.	197.150	vs. Illinois-Chicago	3/7/97
		vs. North Carolina State	3/7/09
		vs. Iowa	3/12/10
20.	197.125	at NCAA Northeast Regional Championships	4/9/05
21.	197.100	at Texas Woman's w/ Arizona	2/23/04
22.	197.050	at Alabama	1/21/05
		vs. Florida	2/23/07
		vs. Auburn/West Virginia	2/8/08
		at Centenary	3/2/08
26.	197.025	vs. Nebraska	3/16/07

ALL-TIME SEC CHAMPIONSHIP AND POSTSEASON RESULTS

1975	AIAW Regional	Baton Rouge, La.	1st	79.74
1976	AIAW Regional	Baton Rouge, La.	1st	99.90
	AIAW Championships	Boone, N.C.	23rd	96.40
1977	AIAW Regional	Stillwater, Okla.	1st	134.25
	AIAW Championships	Mt. Pleasant, Mich	14th	136.05
1978	AIAW Regional	Baton Rouge, La.	1st	140.60
	AIAW Championships	Seattle, Wash.	9th	137.70
1979	AIAW Regional	Baton Rouge, La.	1st	137.55
	AIAW Championships	State College, Pa.	11th	131.95
1980	AIAW Regional	Baton Rouge, La.	1st	147.65
	AIAW Championships	Baton Rouge, La.	6th	137.90
1981	SEC Championship	Baton Rouge, La.	1st	141.10
	SWIAW Regional	Austin, Texas	2nd	144.15
	AIAW Championships	Salt Lake City, Utah	11th	135.45
1982	SEC Championship	Tuscaloosa, Ala.	3rd	144.15
	NCAA Regional	Gainesville, Fla.	3rd	142.05
1983	SEC Championship	Gainesville, Fla.	3rd	176.70
	NCAA Central Regional	Gainesville, Fla.	3rd	182.65
	NCAA Championships	Salt Lake City, Utah	6th	177.80
1984	SEC Championship	Gainesville, Fla.	4th	173.20
1985	SEC Championship	Gainesville, Fla.	4th	180.50
	NCAA Central Regional	Tuscaloosa, Ala.	2nd	181.50
1986	SEC Championship	Gainesville, Fla.	4th	176.60
	NCAA Central Regional	Baton Rouge, La.	1st	185.25
	NCAA Championships	Gainesville, Fla.	9th	180.55
1987	SEC Championship	Athens, Ga.	4th	184.45
	NCAA Central Regional	Tuscaloosa, Ala.	2nd	186.80
	NCAA Championships	Salt Lake City, Utah	7th	181.50
1988	SEC Championship	Tuscaloosa, Ala.	4th	187.40
	NCAA Central Regional	Baton Rouge, La.	2nd	190.05
	NCAA Championships	Salt Lake City, Utah	4th	187.90
1989	SEC Championship	Gainesville, Fla.	4th	187.90
	NCAA Central Regional	Tuscaloosa, Ala.	2nd	187.55
1990	SEC Championship	Athens, Ga.	2nd	192.05
	NCAA Central Regional	Minneapolis, Minn.	2nd	190.85
	NCAA Championships	Corvallis, Ore.	6th	192.10
1991	SEC Championship	Lexington, Ky.	3rd	192.40
	NCAA Central Regional	Auburn, Ala.	3rd	191.75
	NCAA Championships	Tuscaloosa, Ala.	7th	188.60
1992	SEC Championship	Baton Rouge, La.	5th	188.65
	NCAA Central Regional	Columbia, Mo.	7th	184.85
1993	SEC Championship	Tuscaloosa, Ala.	4th	192.900
	NCAA Central Regional	Baton Rouge, La.	2nd	194.700
	NCAA Championships	Corvallis, Ore.	7th(t)	193.425
1994	SEC Championship	Auburn, Ala.	3rd	194.150
	NCAA Central Regional	Tuscaloosa, Ala.	2nd	194.400
	NCAA Championships	Salt Lake City, Utah	8th	193.225

1995	SEC Championship	Gainesville, Fla.	2nd	196.125
	NCAA Central Regional	Ann Arbor, Mich.	3rd	195.075
	NCAA Championships	Athens, Ga.	9th	193.025
1996	SEC Championship	Lexington, Ky.	5th	193.325
	NCAA Central Regional	Baton Rouge, La.	3rd	194.525
1997	SEC Championship	Athens, Ga.	3rd	196.025
	NCAA Central Regional	Ann Arbor, Mich.	3rd	196.175
	NCAA Championships	Gainesville, Fla.	12th	193.825
1998	SEC Championship	Baton Rouge, La.	3rd	196.450
	NCAA Central Regional	Tuscaloosa, Ala.	3rd	195.250
	NCAA Championships	Los Angeles, Calif.	9th	195.300
1999	SEC Championship	Tuscaloosa, Ala.	4th	195.325
	NCAA Central Regional	Baton Rouge, La.	2nd	194.600
	NCAA Championships	Salt Lake City, Utah	9th	194.475
2000	SEC Championship	Gainesville, Fla.	2nd(t)	196.825
	NCAA Central Regional	Tucson, Ariz.	2nd	195.650
	NCAA Championships	Boise, Idaho	9th	194.950
2001	SEC Championship	Birmingham, Ala.	4th	196.300
	NCAA Northeast Regional	Ann Arbor, Mich.	3rd	196.300
2002	SEC Championship	Birmingham, Ala.	4th	196.225
	NCAA Central Regional	Baton Rouge, La.	1st	196.450
	NCAA Championships	Tuscaloosa, Ala.	8th	195.850
2003	SEC Championship	Birmingham, Ala.	4th	195.650
	NCAA West Regional	Seattle, Wash.	2nd	195.700
	NCAA Championships	Lincoln, Neb.	10th	194.000
2004	SEC Championship	Duluth, Ga.	3rd	197.275
	NCAA Central Regional	Baton Rouge, La.	1st	197.500
	NCAA Championships	Los Angeles, Calif.	7th	196.650
2005	SEC Championship	Duluth, Ga.	2nd	196.975
	NCAA Northeast Regional	Durham, N.H.	1st	197.125
	NCAA Championships	Auburn, Ala.	9th	195.800
2006	SEC Championship	Birmingham, Ala.	4th	195.900
	NCAA Central Regional	Baton Rouge, La.	2nd	195.825
	NCAA Championships	Corvallis, Ore.	8th	195.650
2007	SEC Championship	North Little Rock, Ark.	4th	196.250
	NCAA Southeast Regional	Morgantown, W. Va.	2nd	195.950
	NCAA Championships	Salt Lake City, Utah	7th	196.275
2008	SEC Championship	Duluth, Ga.	4th	196.500
	NCAA Central Regional	Baton Rouge, La.	1st	197.625
	NCAA Championships Semifinal	Athens, Ga.	3rd	196.575
	NCAA Super Six	Athens, Ga.	5th	196.350
2009	SEC Championship	Nashville, Tenn.	4th	196.550
	NCAA Central Regional	Columbus, Ohio	1st	196.875
	NCAA Championships Semifinal	Lincoln, Neb.	3rd	196.300
	NCAA Super Six	Lincoln, Neb.	6th	196.375
2010	SEC Championship	Jacksonville, Fla.	4th	195.750
	NCAA Northeast Regional	University Park, Pa.	2nd	196.400
	NCAA Championships	Gainesville, Fla.	9th	196.025
2011	SEC Championship	Birmingham, Ala.	5th	195.475
	NCAA Athens Regional	Athens, Ga.	3rd	195.350
2012	SEC Championship	Duluth, Ga.	4th	196.425
	NCAA Seattle Regional	Seattle, Wash.		

ALL-TIME OPPONENT RECORDS

OPPONENT W-L-T	OVERALL W-L-T	HOME W-L-T	AWAY W-L-T	NEUTRAL W-L-T	REGULAR SEASON W-L-T	POSTSEASON W-L-T	LAST MEETING
Air Force	1-0-0	0-0-0	1-0-0	0-0-0	1-0-0	0-0-0	1978
Alabama	15-87-2	10-15-2	2-24-0	3-48-0	13-55-2	2-32-0	2012
Amarillo College	1-0-0	0-0-0	0-0-0	1-0-0	1-0-0	0-0-0	1977
Arizona	10-9-0	1-2-0	1-2-0	8-5-0	4-8-0	6-1-0	2012
Arizona State	10-9-0	2-2-0	2-1-0	6-6-0	2-4-0	8-5-0	2010
Arkansas	20-5-1	4-1-0	4-1-1	12-3-0	17-4-1	3-1-0	2012
Arkansas-Little Rock	1-0-0	1-0-0	0-0-0	0-0-0	1-0-0	0-0-0	1976
Auburn	65-13-0	20-4-0	10-5-0	35-4-0	54-10-0	11-3-0	2012
Ball State	4-0-0	1-0-0	0-0-0	3-0-0	3-0-0	1-0-0	2005
Boise State	2-0-0	0-0-0	0-0-0	2-0-0	1-0-0	1-0-0	2009
BYU	11-0-0	3-0-0	0-0-0	8-0-0	7-0-0	4-0-0	2011
Cal State Fullerton	2-4-0	0-1-0	0-0-0	2-3-0	0-0-0	2-4-0	2003
California Berkeley	1-0-0	0-0-0	0-0-0	1-0-0	1-0-0	0-0-0	1997
Centenary	28-1-0	14-0-0	11-1-0	3-0-0	28-1-0	0-0-0	2010
Central Michigan	2-0-0	2-0-0	0-0-0	0-0-0	0-0-0	2-0-0	2002
Clarion	0-1-0	0-0-0	0-0-0	0-1-0	0-0-0	0-1-0	1979
Colorado	3-0-0	1-0-0	2-0-0	0-0-0	3-0-0	0-0-0	1980
Colorado State	2-0-0	0-0-0	2-0-0	0-0-0	2-0-0	0-0-0	1980
Denver	8-2-0	3-0-0	0-1-0	5-1-0	7-2-0	1-0-0	2008
Eastern Kentucky	1-0-0	0-0-0	0-0-0	1-0-0	0-0-0	1-0-0	1979
Florida	29-61-0	13-10-0	6-25-0	10-26-0	24-48-0	5-13-0	2012
Furman	1-0-0	1-0-0	0-0-0	0-0-0	1-0-0	0-0-0	1976
George Washington	4-0-0	1-0-0	0-0-0	3-0-0	4-0-0	0-0-0	2008
Georgia	15-68-2	5-12-1	3-20-0	7-36-1	12-53-2	3-15-0	2012
Georgia College	1-0-0	0-0-0	0-0-0	1-0-0	1-0-0	0-0-0	1991
Houston Baptist	8-0-0	3-0-0	4-0-0	1-0-0	8-0-0	0-0-0	1991
Illinois	8-1-0	2-0-0	0-0-0	6-1-0	3-1-0	5-0-0	2007
Illinois-Chicago	11-1-0	6-0-0	0-0-0	5-1-0	8-1-0	3-0-0	2009
Illinois State	7-0-0	1-0-0	0-0-0	6-0-0	3-0-0	4-0-0	2002
Indiana of Pennsylvania	2-0-0	0-0-0	0-0-0	2-0-0	2-0-0	0-0-0	1992
Indiana State	2-0-0	2-0-0	0-0-0	0-0-0	1-0-0	1-0-0	1986
Iowa	10-2-0	4-0-0	3-0-0	3-2-0	9-1-0	1-1-0	2012
Iowa State	8-1-0	3-1-0	0-0-0	5-0-0	3-1-0	5-0-0	2006
Jacksonville State	5-0-0	4-0-0	1-0-0	0-0-0	4-0-0	1-0-0	1985
Kent State	5-0-0	2-0-0	0-0-0	5-0-0	1-0-0	4-0-0	2009
Kentucky	66-5-0	20-1-0	13-3-0	33-1-0	62-5-0	4-0-0	2012
Louisville	2-2-0	1-0-0	0-1-0	1-1-0	1-1-0	1-1-0	1982
Maryland	8-0-0	2-0-0	2-0-0	4-0-0	6-0-0	2-0-0	2011
Massachusetts	1-0-0	0-0-0	0-0-0	1-0-0	0-0-0	1-0-0	2001
Memphis State	4-1-0	3-0-0	1-1-0	0-0-0	4-1-0	0-0-0	1984
Michigan	11-13-0	4-1-0	0-5-0	7-7-0	5-2-0	6-11-0	2010
Michigan State	22-3-0	11-0-0	1-1-0	10-1-0	9-3-0	13-0-0	2009
Minnesota	13-0-0	4-0-0	1-0-0	8-0-0	5-0-0	8-0-0	2008
Miss. Univ. for Women	1-0-0	1-0-0	0-0-0	0-0-0	1-0-0	0-0-0	1977
Missouri	24-6-0	11-0-0	6-4-0	7-2-0	14-5-0	10-1-0	2011
Montana	1-0-0	0-0-0	0-0-0	1-0-0	1-0-0	0-0-0	1985
Montana State	1-0-0	0-0-0	0-0-0	1-0-0	1-0-0	0-0-0	1981
Nebraska	10-12-1	4-1-0	0-1-1	6-10-0	4-4-1	6-8-0	2011
New Hampshire	10-0-0	5-0-0	1-0-0	4-0-0	6-0-0	4-0-0	2011
New Mexico	1-2-0	1-0-0	0-1-0	0-1-0	1-2-0	0-0-0	1985
North Carolina	5-0-0	1-0-0	0-0-0	4-0-0	3-0-0	2-0-0	2009
North Carolina State	10-0-0	4-0-0	1-0-0	5-0-0	8-0-0	2-0-0	2012
Northern Colorado	2-0-0	1-0-0	1-0-0	0-0-0	2-0-0	0-0-0	1980
Northern Illinois	4-0-0	0-0-0	0-0-0	4-0-0	2-0-0	2-0-0	1994
Ohio State	12-0-0	3-0-0	2-0-0	7-0-0	4-0-0	8-0-0	2010
Oklahoma	9-6-0	1-2-0	0-1-0	8-3-0	3-3-0	6-3-0	2010

ALL-TIME OPPONENT RECORDS

OPPONENT	OVERALL W-L-T	HOME W-L-T	AWAY W-L-T	NEUTRAL W-L-T	REGULAR SEASON W-L-T	POSTSEASON W-L-T	LAST MEETING
Oklahoma State	5-0-0	4-0-0	0-0-0	1-0-0	1-0-0	4-0-0	1984
Oral Roberts	3-0-0	3-0-0	0-0-0	0-0-0	0-0-0	3-0-0	1982
Oregon	1-0-0	0-0-0	0-0-0	1-0-0	1-0-0	0-0-0	1981
Oregon State	10-8-1	2-1-0	1-2-1	7-5-0	2-3-0	8-5-1	2011
Penn State	16-17-0	7-2-0	2-5-0	7-10-0	9-12-0	7-5-0	2010
Pittsburgh	4-1-0	0-0-0	0-0-0	4-1-0	3-0-0	1-1-0	2005
Portland State	1-0-0	0-0-0	0-0-0	1-0-0	1-0-0	0-0-0	1981
Rhode Island	5-0-0	3-0-0	0-0-0	2-0-0	4-0-0	1-0-0	2002
Rutgers	1-0-0	0-0-0	0-0-0	1-0-0	0-0-0	1-0-0	2005
Seattle Pacific	1-0-0	0-0-0	0-0-0	1-0-0	1-0-0	0-0-0	2012
Southeast Missouri State	9-1-0	3-0-0	0-0-0	6-1-0	5-0-0	4-1-0	2009
Southern California	0-1-0	0-0-0	0-0-0	0-1-0	0-0-0	0-1-0	1979
Southern Illinois	2-0-0	2-0-0	0-0-0	0-0-0	0-0-0	2-0-0	1986
Southern Mississippi	2-0-0	2-0-0	0-0-0	0-0-0	2-0-0	0-0-0	1977
UL-Lafayette	1-0-0	1-0-0	0-0-0	0-0-0	1-0-0	0-0-0	1975
Southwest Missouri State	1-1-0	1-0-0	0-0-0	0-1-0	1-0-0	0-1-0	1979
Southwest Texas State	3-0-0	1-0-0	0-0-0	2-0-0	2-0-0	1-0-0	1980
Stanford	2-5-0	1-1-0	0-0-0	1-4-0	0-0-0	2-5-0	2010
Tennessee	1-0-0	0-0-0	1-0-0	0-0-0	1-0-0	0-0-0	1976
Texas	5-0-0	3-0-0	2-0-0	0-0-0	4-0-0	1-0-0	1981
Texas A&M	5-0-0	4-0-0	1-0-0	0-0-0	3-0-0	2-0-0	1980
Texas Woman's	11-0-0	5-0-0	4-0-0	2-0-0	11-0-0	0-0-0	2010
Towson State	2-0-0	0-0-0	0-0-0	2-0-0	1-0-0	1-0-0	2003
UTEP	1-0-0	0-0-0	0-0-0	1-0-0	1-0-0	0-0-0	1981
UCLA	3-19-1	1-1-0	0-4-0	2-14-1	2-4-0	1-15-1	2011
UC Santa Barbara	2-0-0	0-0-0	0-0-0	2-0-0	2-0-0	0-0-0	1997
Utah	2-27-0	2-2-0	0-9-0	0-16-0	2-5-0	0-22-0	2010
Utah State	4-1-0	2-0-0	0-0-0	2-1-0	2-0-0	2-1-0	2006
Washington	8-4-0	2-0-0	2-0-0	4-4-0	4-1-0	4-3-0	2012
West Virginia	11-0-0	5-0-0	1-0-0	5-0-0	7-0-0	4-0-0	2012
Western Michigan	3-0-0	1-0-0	0-0-0	2-0-0	3-0-0	0-0-0	2006
Wisconsin	2-0-0	0-0-0	0-0-0	2-0-0	1-0-0	1-0-0	1990
OVERALL	642-395-8	242-54-3	101-119-3	302-215-2	445-237-6	197-158-2	

2012 opponents in **bold**

TOP GYMNASTICS ATTENDANCE FIGURES IN MARAVICH CENTER HISTORY

RANK	ATTENDANCE	OPPONENT	DATE	RESULT	SCORE
1.	7,717	Alabama	2/22/08	L	196.300-196.125
2.	6,170	North Carolina State	3/7/09	W	197.150-195.725
3.	5,641	Oregon State	3/5/10	W	196.925-195.525
4.	5,159	North Carolina State	3/2/12	W	196.550-194.875
5.	5,076	Georgia	2/24/95	L	197.095-196.175
6.	4,460	Georgia	2/18/11	L	196.500-196.350
7.	4,369	Georgia	1/16/09	L	196.850-195.950
8.	4,170	Alabama	1/23/04	L	197.600-196.750
9.	4,155	Alabama	2/18/94	T	194.925-194.925
10.	4,122	Georgia	1/24/97	T	196.425-196.425
11.	4,088	Centenary	3/18/05	W	196.900-190.375
12.	4,022	Kentucky	1/23/98	W	194.975-192.775
13.	4,013	Alabama	2/24/12	L	197.025-196.575
14.	4,012	Georgia	2/11/05	W	196.375-195.525
15.	4,003	Florida	2/7/97	L	195.475-195.500
16.	3,976	Kentucky	2/3/12	W	196.125-195.050
17.	3,932	Ill.-Chicago, New Hampshire, W. Michigan	3/4/05	1st	196.175 (LSU)
18.	3,764	Georgia	2/2/07	L	197.425-196.450
19.	3,646	Super Six Challenge	1/6/06	4th	193.900 (LSU)
20.	3,590	Florida	1/21/11	L	196.425-194.000
21.	3,343	Washington	3/7/08	W	196.550-195.175
22.	3,320	Florida	2/23/07	L	197.200-197.050
23.	3,248	Georgia	1/29/93	L	194.900-190.800
24.	3,127	Florida	2/6/09	W	196.800-195.825
25.	3,048	Alabama	2/4/00	W	196.325-196.250
26.	3,045	Arkansas	2/27/09	W	196.150-195.800
27.	3,012	NCAA Central Regional	4/2/04	1st	197.500 (LSU)
28.	2,963	Auburn/West Virginia	2/8/08	1st	197.050 (LSU)
29.	2,918	Kentucky	3/5/94	W	192.250-191.425
30.	2,910	SEC Championship	3/21/98	3rd	196.450 (LSU)
31.	2,876	West Virginia	3/16/12	W	196.850-194.900
32.	2,855	NCAA Central Regional	4/7/06	2nd	195.825 (LSU)

YEAR-BY-YEAR HOME RECORD

YEAR	MEETS	RECORD	PERCENTAGE	YEAR	MEETS	RECORD	PERCENTAGE
1975	3	5-0	1.000	2000	5	5-0	1.000
1976	4	8-0	1.000	2001	5	7-1	.875
1977	5	6-0	1.000	2002	7	12-0	1.000
1978	5	7-0	1.000	2003	4	2-2	.500
1979	5	11-1	.917	2004	6	10-1	.909
1980	6	9-0	1.000	2005	6	8-0	1.000
1981	4	7-1	.875	2006	8	9-7	.563
1982	5	5-0	1.000	2007	6	4-2	.667
1983	3	3-0	1.000	2008	7	11-1	.917
1984	3	3-0	1.000	2009	5	5-1	.833
1985	6	2-4	.333	2010	6	6-0	1.000
1986	5	8-1	.889	2011	5	2-3	.400
1987	5	6-0	1.000	2012	5	4-1	.800
1988	6	11-1-1	.846	TOTAL	197	242-54-3	.814
1989	6	8-1	.889				
1990	5	5-0	1.000				
1991	5	2-3	.400				
1992	6	4-8	.333				
1993	5	9-3	.750				
1994	3	3-0-1	.875				
1995	5	5-2	.714				
1996	5	8-4	.667				
1997	5	3-1-1	.700				
1998	6	8-3	.727				
1999	6	11-2	.846				

YEAR-BY-YEAR RESULTS

1975

6-1 OVERALL, 3-0 POSTSEASON

LSU SCORE	W/L	OPPONENT	OPP. SCORE
82.85	W	USL	66.40
78.00	W	Alabama	72.85
89.65	L	at Memphis State	92.65
85.20	W	at Texas	81.20
79.74	1st	AIAW Regional Championships (Baton Rouge, La.)	
	W	Texas	78.86
	W	Southwest Texas State	73.08
	W	Southwestern Louisiana	54.33

1976

14-22 OVERALL, 6-22 POSTSEASON

LSU SCORE	W/L	OPPONENT	OPP. SCORE
93.15	W	Ark.-Little Rock	46.45
95.15	W	at Florida	94.95
85.90	W	at Alabama	68.60
89.50	W	Furman	27.50
95.20	1st	LSU Triangular	
	W	Texas	89.50
	W	Memphis State	75.20
91.90	W	at Georgia	84.00
93.30	W	at Tennessee	68.10
99.90	1st	AIAW Regional Championships (Baton Rouge, La.)	
	W	Texas	96.45
	W	Southwest Texas State	92.95
	W	Amarillo College	88.75
	W	Oklahoma State	86.50
96.40	23rd	AIAW National Championships (Boone, N.C.)	
	L	Clarion State	107.95
	L	Southwest Missouri State	106.80
	L	Cal State Fullerton	106.30
	L	Southern Illinois	106.00
	L	Penn State	104.25
	L	Arizona State	103.00
	L	Massachusetts	102.55
	L	Nevada	102.40
	L	Indiana State	101.65
	L	Utah	101.65
	L	Canisius	101.05
	L	Oregon	99.65
	L	Washington	99.60
	L	Grand View College	99.40
	L	Seattle Pacific	99.20
	L	Louisville	98.90
	L	Kent State	97.70
	L	San Diego State	97.45
	L	Colorado	97.35
	L	USC	96.95
	L	Wisconsin	96.70
	L	Michigan State	96.50
	W	Minnesota	93.35
	W	Central Michigan	91.05

1977

13-13 OVERALL, 3-13 POSTSEASON

LSU SCORE	W/L	OPPONENT	OPP. SCORE
177.65	W	Southern Miss.	54.55
123.70	W	at Memphis State	114.05
132.00	1st	LSU Triangular	
	W	Florida	115.00
	W	Alabama	105.25
132.15	W	Jacksonville State	118.75
132.10	W	Miss. Univ. for Women	110.80
138.40	1st	Texas A&M Invitational	
	W	Amarillo College	111.75
	W	Southwest Texas State	106.40
	W	Texas A&M	105.95
118.75	W	Southern Mississippi	85.85
134.25	1st	AIAW Regional Championships (Stillwater, Okla.)	
	W	Oklahoma State	121.75
136.05	14th	AIAW National Championships (Mount Pleasant, Mich.)	
	L	Clarion State	147.80
	L	Cal State Fullerton	146.80
	L	Penn State	146.40
	L	Massachusetts	144.70
	L	USC	142.30
	L	Southwest Missouri State	141.95
	L	Arizona State	138.55
	L	Indiana State	138.55
	L	Utah	138.50
	L	Southern Illinois	138.15
	L	UCLA	136.40
	L	Michigan State	136.15
	L	Nevada	136.15
	W	Washington	133.85
	W	Louisville	133.15

1978

19-9 OVERALL, 10-8 POSTSEASON

LSU SCORE	W/L	OPPONENT	OPP. SCORE
135.60	W	Illinois-Chicago	130.45
135.55	W	Auburn	121.7
136.45	W	at Jacksonville State	134.85
136.75	W	Texas A&M	120.10
132.05	W	at Florida	100.00
135.40	L	at Georgia	136.20
140.15	W	Memphis State	111.95
134.25	W	at Colorado State	123.55
135.95	W	at Colorado	132.75

133.05	W	at Air Force	113.95
140.60	1st	AIAW Regional Championships (Baton Rouge, La.)	
	W	Texas A&M	124.50
	W	Oklahoma State	123.25
	W	Oral Roberts	112.95
137.70	9th	AIAW National Championships (Seattle, Wash.)	
	L	Penn State	147.70
	L	Cal State Fullerton	147.55
	L	Southwest Missouri State	145.05
	L	Clarion State	142.05
	L	USC	141.65
	L	Utah	141.10
	L	Arizona State	140.875
	L	Massachusetts	138.70
	W	Louisville	136.30
	W	Michigan State	136.15
	W	Southern Illinois	135.90
	W	San Diego State	134.30
	W	Georgia	133.30
	W	New Hampshire	131.35
	W	Kent State	129.90

1979

17-11 OVERALL, 9-10 POSTSEASON

LSU SCORE	W/L	OPPONENT	OPP. SCORE
128.60	W	Illinois-Chicago	123.75
	W	Indiana State	121.2
	W	Nebraska	117.60
142.65	W	at Auburn	137.20
136.10	W	Northern Colorado	133.85
	W	Colorado	126.55
	W	Florida	118.00
131.40	L	Utah	133.90
132.25	T	at Nebraska	132.25
135.35	W	Southwest Missouri State	135.15
137.55	1st	AIAW Regional Championships (Baton Rouge, La.)	
	W	Oklahoma State	132.45
	W	Oral Roberts	131.00
	W	Texas A&M	120.65
	W	Southwest Texas State	119.55
131.95	11th	AIAW National Championships (State College, Pa.)	
	L	Cal State Fullerton	143.80
	L	Penn State	143.70
	L	Clarion	141.75
	L	Utah	138.10
	L	Southwest Missouri State	137.70
	L	Southern California	135.25
	L	Oregon State	134.55
	L	Louisville	133.90
	L	Pittsburgh	133.85
	L	Utah State	133.70
	W	Nebraska	131.95
	W	Georgia	131.60
	W	UCLA	130.95
	W	Eastern Kentucky	130.45
	W	Kent State	129.80

1980

28-8 OVERALL, 18-5 POSTSEASON

LSU SCORE	W/L	OPPONENT	OPP. SCORE
127.75		Texas Invitational (Austin, Texas)	
	W	Southwest Texas State	116.55
	W	Texas	92.45
140.40	W	Georgia	132.00
142.30	W	Texas A&M	130.00
136.30	L	at Penn State	144.10
141.35	W	Louisville	139.80
133.95		Wolf's Cup (Salt Lake City, Utah)	
	L	Utah	144.55
	L	Arizona State	139.75
140.50	W	at Colorado	132.60
140.50	W	at Colorado State	122.30
138.30	W	at Northern Colorado	134.90
142.70	W	Jacksonville State	140.05
141.20	W	Nebraska	133.55
147.65	1st	AIAW Regional Championships (Baton Rouge, La.)	
	W	Oklahoma State	140.10
	W	Oral Roberts	136.90
	W	Texas A&M	132.90
	W	Texas	121.40
137.90	6th	AIAW National Championships (Baton Rouge, La.)	
	L	Penn State	145.50
	L	Utah	144.15
	L	Cal State Fullerton	143.65
	L	Oregon State	140.15
	L	UCLA	138.85
	W	Brigham Young	137.50
	W	Louisville	137.40
	W	Arizona State	136.95
	W	Jacksonville State	135.15
	W	Southern Illinois	132.85
	W	Florida	132.65
	W	Utah State	131.45
	W	Oklahoma State	131.05
	W	Minnesota	130.05
	W	Nebraska	126.70

1981

25-16 OVERALL, 7-11 POSTSEASON

LSU SCORE	W/L	OPPONENT	OPP. SCORE
136.35		Sun Bowl Classic (El Paso, Texas)	
	W	Denver	126.70
	W	UTEP	119.05
142.20		Cat Classic (Columbia, Mo.)	
	L	Penn State	144.30
	W	Missouri	140.15
	W	Pittsburgh	139.55
	W	Brigham Young	136.70
	W	Montana State	117.25
142.90	L	at Florida	147.15
142.67	W	Utah State	138.61
141.10	1st	SEC Championship (Baton Rouge, La.)	
	W	Florida	139.90
	W	Georgia	135.05
	W	Alabama	134.15
	W	Auburn	125.45
	W	Kentucky	125.25
141.65		Shanico Invitational (Corvallis, Ore.)	
	L	Oregon State	145.90
	L	UCLA	142.25
	W	Washington	137.60
	W	Brigham Young	137.35
	W	Nebraska	135.50
	W	Portland State	121.20
	W	Oregon	86.95
143.05	L	Penn State	144.70
143.30	W	Texas	131.40
144.15	2nd	AIAW Regional Championships (Austin, Texas)	
	L	Oklahoma State	144.50
	W	Oral Roberts	140.00
	W	Texas	131.05
135.45	11th	AIAW National Championships (Salt Lake City, Utah)	
	L	Utah	145.65
	L	UCLA	144.10
	L	Cal State Fullerton	141.95
	L	Penn State	141.80
	L	Arizona State	141.60
	L	Florida	141.35
	L	Oregon State	141.15
	L	Oklahoma State	138.45
	L	USC	137.00
	L	BYU	136.00
	W	Pittsburgh	135.40
	W	Louisville	134.00
	W	Utah State	132.75
	W	Ohio State	132.30
	W	Missouri	130.00

1982

13-7 OVERALL, 1-2 POSTSEASON

LSU SCORE	W/L	OPPONENT	OPP. SCORE
141.35	W	Oral Roberts	131.90
145.35	W	Alabama	140.75
142.70	W	Missouri	138.80
142.05		Cat Classic (Columbia, Mo.)	
	L	Penn State	143.25
	W	Missouri	139.65
	W	Pittsburgh	136.60
	W	Arizona	136.10
	W	Brigham Young	135.15
141.70	W	Florida	138.80
141.30	L	at Penn State	143.70
139.95	L	at Louisville	142.60
144.15	3rd	SEC Championship (Tuscaloosa, Ala.)	
	L	Florida	145.60
	L	Alabama	144.55
	W	Georgia	142.05
	W	Kentucky	135.00
	W	Auburn	134.95
144.50	W	Georgia	140.10
142.05	3rd	NCAA Regional Championships (Gainesville, Fla.)	
	L	Florida	145.45
	L	Alabama	142.80
	W	North Carolina	137.40

YEAR-BY-YEAR RESULTS

1983

17-13-1 OVERALL, 6-7-1 POSTSEASON

LSU SCORE	W/L	OPPONENT	OPP. SCORE
177.20	W	at Georgia	174.00
175.25	L	at Alabama	180.25
	W	Minnesota	174.70
	W	Auburn	167.10
183.75	W	Texas Woman's	160.30
176.65	L	at Florida	182.90
176.55		Cat Classic (Columbia, Mo.)	
	L	Penn State	178.70
	L	Missouri	178.35
	W	Arizona	173.60
	W	Pittsburgh	172.65
	W	Kentucky	169.55
176.70	3rd	SEC Championship (Gainesville, Fla.)	
	L	Florida	181.95
	L	Alabama	181.75
	W	Georgia	175.10
	W	Kentucky	170.50
174.75	W	Centenary	169.60
183.20	W	Penn State	178.75
182.65	3rd	NCAA Regional Championships (Gainesville, Fla.)	
	L	Alabama	184.75
	L	Florida	184.65
	W	Georgia	179.25
	W	Oklahoma	178.80
	W	Oklahoma State	174.95
177.80	6th	NCAA Championships (Salt Lake City, Utah)	
	L	Utah	184.65
	L	Arizona State	183.30
	L	Cal State Fullerton	179.25
	L	Alabama	179.05
	L	Florida	177.85
	T	UCLA	177.80
	W	Ohio State	176.65
	W	Oregon State	173.55
	W	Nebraska	165.55

1984

8-10 OVERALL

DATE	LSU SCORE	W/L	OPPONENT	OPP. SCORE
1/6	175.80	W	New Mexico	172.30
1/20	176.90	L	at Arizona State	186.90
		W	Oklahoma State	173.30
2/1	169.95	L	at Centenary	173.50
		L	Illinois	171.50
2/3	172.80		Cat Classic (Columbia, Mo.)	
		L	Penn State	178.75
		L	Arizona	178.60
		L	Missouri	178.20
		W	Brigham Young	172.65
		W	Memphis State	169.35
2/8	175.00	W	Kentucky	166.30
2/22	178.25	W	Michigan	174.25
2/27	176.05	L	at Penn State	177.85
3/4	173.20	4th	SEC Championship (Gainesville, Fla.)	
		L	Florida	184.15
		L	Georgia	177.05
		L	Alabama	175.90
		W	Kentucky	165.35
		W	Auburn	161.55

1985

16-14 OVERALL, 4-1 POSTSEASON

DATE	LSU SCORE	W/L	OPPONENT	OPP. SCORE
12/27	176.00		Aloha Gymfest (Kailua, Hawaii)	
		L	New Mexico	177.30
		L	Oregon State	176.70
		W	Oklahoma	175.50
		W	UCLA	174.10
		W	Maryland	172.05
		W	Brigham Young	168.85
		W	Montana	165.10
		W	UC Santa Barbara	159.25
1/18	178.30	L	Alabama	183.30
1/25	177.40		Purina Cat Classic (Columbia, Mo.)	
		L	Penn State	181.90
		L	Arizona	180.65
		L	Missouri	180.40
		W	Kentucky	177.05
		W	New Hampshire	176.25
2/7	180.55	L	Arizona State	180.80
2/8	174.80	L	Florida	188.75
2/22	180.50	4th	SEC Championship (Gainesville, Fla.)	
		L	Florida	185.65
		L	Alabama	183.65
		L	Georgia	181.80
		W	Kentucky	173.45
		W	Auburn	158.90
3/1	184.60	W	Jacksonville State	178.60
3/2	182.25	L	at New Mexico	185.55
3/6	187.65	W	Penn State	185.70
3/16	183.85	L	Florida	189.00
3/30	181.50	2nd	NCAA Central Regional Championships (Tuscaloosa, Ala.)	
		L	Alabama	186.35
		W	Michigan State	178.35
		W	Illinois	177.80

W	Illinois State	177.25
W	Missouri	173.85

1986

13-17 OVERALL, 6-8 POSTSEASON

DATE	LSU SCORE	W/L	OPPONENT	OPP. SCORE
1/10	180.70	W	Missouri	176.50
1/17	180.65	W	at Houston Baptist	153.60
1/30	182.45	W	Centenary	153.25
2/3	178.25	L	at Utah	187.70
2/9	184.60	L	at Georgia	187.65
2/22	176.60	4th	SEC Championship (Gainesville, Fla.)	
		L	Georgia	185.15
		L	Florida	184.10
		L	Alabama	183.75
		W	Kentucky	175.95
		W	Auburn	171.40
2/28	180.65	L	Alabama	182.65
3/7	186.15	W	Kentucky	176.65
3/15	181.25	L	Alabama	184.60
		L	at Florida	184.10
3/22	184.05	L	at Alabama	188.55
		W	North Carolina State	179.55
4/5	185.25	1st	NCAA Central Regional Championships (Baton Rouge, La.)	
		W	Alabama	185.05
		W	Michigan State	183.45
		W	Indiana State	177.95
		W	Missouri	177.65
		W	Southern Illinois	175.55
4/18	180.55	9th	NCAA Championships (Gainesville, Fla.)	
		L	Utah	186.95
		L	Arizona State	186.70
		L	Alabama	186.35
		L	Georgia	185.45
		L	Cal State Fullerton	185.00
		L	Penn State	182.70
		L	UCLA	181.70
		L	Florida	181.30
		W	Ohio State	177.80

1987

23-11 OVERALL, 10-7 POSTSEASON

DATE	LSU SCORE	W/L	OPPONENT	OPP. SCORE
1/16	179.35	L	at Alabama	180.15
		W	Auburn	174.65
1/22	183.90	W	Auburn	175.35
1/30	183.65	W	Houston Baptist	175.60
		W	at Centenary	142.25
2/6	187.15	W	Georgia	186.35
2/20	181.20	W	at Penn State	179.75
2/27	186.50	W	Alabama	184.75
3/7	185.60	W	at Kentucky	182.80
3/11	186.05	W	West Virginia	175.60
		W	Rhode Island	174.25
3/16	188.55	W	Florida	186.10
3/27	184.45	4th	SEC Championship (Athens, Ga.)	
		L	Georgia	189.40
		L	Florida	185.65
		L	Alabama	185.30
		W	Auburn	181.40
		W	Kentucky	180.95
4/11	186.80	2nd	NCAA Central Regional Championships (Tuscaloosa, Ala.)	
		L	Alabama	189.05
		W	Michigan State	183.60
		W	Illinois-Chicago	183.30
		W	Minnesota	180.20
		W	Auburn	178.60
		W	Illinois State	178.00
4/24	181.50	7th	NCAA Championships (Salt Lake City, Utah)	
		L	Georgia	187.90
		L	Utah	187.55
		L	UCLA	187.00
		L	Alabama	186.60
		L	Arizona State	184.00
		L	Florida	183.80
		W	Ohio State	180.20
		W	Washington	179.85
		W	Nebraska	179.50
		W	Arizona	179.45
		W	Oregon State	174.50

1988

28-9-1 OVERALL, 13-4 POSTSEASON

DATE	LSU SCORE	W/L	OPPONENT	OPP. SCORE
1/16	182.65	W	at Centenary	174.75
1/24	184.65	W	at Auburn	182.30
1/28	187.10	T	Alabama	187.10
		W	Houston Baptist	181.55
2/4	183.50	L	at Georgia	184.00
2/13	184.20	W	Iowa State	177.55
2/19	184.45	W	Minnesota	179.55
2/24	189.95	W	Florida	185.90
2/27	190.90		Maryland Invitational (College Park, Md.)	
		W	Georgia	189.45
		W	Maryland	185.85
		W	North Carolina State	178.65
3/4	189.85	W	Kentucky	184.45
		W	Penn State	182.45
3/12	187.45	L	at Florida	189.00

3/26	187.40	4th	Rhode Island	177.60
			SEC Championship (Tuscaloosa, Ala.)	
		L	Alabama	190.15
		L	Georgia	189.20
		L	Florida	188.85
		W	Auburn	183.40
		W	Kentucky	183.20
3/30	188.85	W	at Houston Baptist	186.60
4/9	190.05	2nd	NCAA Central Regional Championships (Baton Rouge, La.)	
		L	Alabama	191.75
		W	Michigan State	187.15
		W	Auburn	186.10
		W	Illinois	181.70
		W	Missouri	181.70
		W	Minnesota	181.60
4/22	187.90	4th	NCAA Championships (Salt Lake City, Utah)	
		L	Alabama	190.05
		L	Utah	189.50
		L	UCLA	188.80
		W	Georgia	186.80
		W	Florida	186.65
		W	Oregon State	186.65
		W	Arizona State	185.10
		W	Arizona	184.00
		W	Nebraska	183.55
		W	Penn State	179.70
		W	Michigan State	178.80

1989

17-6 OVERALL, 5-1 POSTSEASON

DATE	LSU SCORE	W/L	OPPONENT	OPP. SCORE
1/14	186.20	W	at Centenary	177.25
1/19	187.50	W	Auburn	182.50
1/27	183.75		Purina Cat Classic (Columbia, Mo.)	
		L	Arizona	188.60
		L	Penn State	185.95
		W	Missouri	181.55
		W	Brigham Young	181.45
2/3	188.90	L	Georgia	189.20
		W	Houston Baptist	181.25
2/11	186.05	W	at Maryland	183.70
		W	Indiana of Penn.	181.70
2/17	191.25	W	Kentucky	188.90
2/23	188.65	W	Florida	188.00
2/28	190.10	W	Penn State	173.75
3/3	189.45	W	at Kentucky	184.25
3/12	189.85	W	Maryland	186.95
		W	West Virginia	185.35
		W	North Carolina State	183.05
3/18	187.90	4th	SEC Championship (Gainesville, Fla.)	
		L	Florida	191.50
		L	Alabama	191.05
		L	Georgia	190.40
		W	Auburn	185.05
		W	Kentucky	182.65
3/22	186.65	W	at Houston Baptist	185.35
4/1	187.55	2nd	NCAA Central Regional Championships (Tuscaloosa, Ala.)	
		L	Alabama	192.75
		W	Michigan State	186.70
		W	Minnesota	186.10
		W	Auburn	185.65
		W	Wisconsin	182.40
		W	Illinois	181.85

YEAR-BY-YEAR RESULTS

1990

27-9 OVERALL, 11-6 POSTSEASON

DATE	LSU SCORE	W/L	OPPONENT	OPP. SCORE
1/19	186.55	W	Michigan	175.95
1/28	189.40	W	Denver	182.80
2/3	186.45	L	at Alabama	189.85
2/11	190.15	W	Kentucky	184.75
2/18	189.60	L	at Georgia	191.15
2/24	193.05	W	Missouri	189.20
3/2	190.15	W	at Arizona State	188.75
		W	Florida	187.25
3/9	191.00	W	at Florida	190.15
		W	Ohio State	185.60
		W	Minnesota	185.55
		W	Wisconsin	183.15
		W	George Washington	181.75
3/16	192.10	W	Houston Baptist	187.50
3/23	192.05	2nd	SEC Championship (Athens, Ga.)	
		L	Alabama	193.55
		W	Georgia	191.85
		W	Auburn	188.15
		W	Florida	188.00
		W	Kentucky	186.30
4/9	190.850	2nd	NCAA Central Regional Championships (Minneapolis, Minn.)	
		L	Alabama	194.150
		W	Minnesota	188.650
		W	Auburn	187.125
		W	Illinois	186.525
		W	Southeast Missouri State	185.400
		W	Missouri	185.075
4/20	192.100	6th	NCAA Championships (Corvallis, Ore.)	
		L	Utah	194.900
		L	Alabama	194.575
		L	Georgia	193.225
		L	UCLA	193.100
		L	Nebraska	192.225
		W	Oregon State	189.950
		W	Cal State Fullerton	189.700
		W	Towson State	187.975
		W	Florida	187.175
		W	Arizona	187.175
		W	Ohio State	183.650

1991

18-16 OVERALL, 9-8 POSTSEASON

DATE	LSU SCORE	W/L	OPPONENT	OPP. SCORE
1/19	187.85	W	at Houston Baptist	186.35
1/25	188.30	L	Arizona State	188.55
2/2	190.10	L	Alabama	192.75
		L	at Georgia	191.80
2/8	190.35	W	Kentucky	182.35
2/15	192.10	L	Georgia	192.55
2/24	189.80	L	at Auburn	189.85
		W	Georgia College	185.25
3/1	193.75	W	Michigan	187.00
3/8	188.60	W	Southeast Missouri State	186.90
		W	at Kentucky	185.55
3/15	189.85	L	Florida	190.10
3/23	192.40	3rd	SEC Championship (Lexington, Ky.)	
		L	Georgia	194.10
		L	Alabama	194.05
		W	Florida	191.30
		W	Auburn	189.25
		W	Kentucky	186.00
4/6	191.75	3rd	NCAA Central Regional Championships (Auburn, Ala.)	
		L	Alabama	195.575
		L	Auburn	192.150
		W	Southeast Missouri State	189.025
		W	Northern Illinois	186.925
		W	Missouri	186.675
		W	Iowa	186.425
4/19	188.60	7th	NCAA Championships (Tuscaloosa, Ala.)	
		L	Alabama	195.125
		L	Utah	194.375
		L	Georgia	193.375
		L	Oregon State	192.350
		L	Penn State	190.950
		L	Florida	189.700
		W	Brigham Young	187.700
		W	Auburn	187.650
		W	Arizona State	187.650
		W	Arizona	187.475
		W	Utah State	185.950

1992

8-20 OVERALL, 0-6 POSTSEASON

DATE	LSU SCORE	W/L	OPPONENT	OPP. SCORE
1/19	184.65	L	at Georgia	193.35
1/24	186.80	L	Arizona	189.30
1/31	185.45	L	UCLA	188.90
2/7	188.55	L	Alabama	192.10
2/14	186.25	L	at Michigan	189.25
		W	Northern Illinois	185.20
		W	Indiana of Penn.	182.40
2/16	185.25	L	at Michigan	189.40
		L	Missouri	188.20
2/28	189.10	W	Kentucky	187.75
		W	Centenary	179.45
3/6	189.95	L	Auburn	190.70
		W	Southeast Missouri State	186.55
3/14	188.65	L	at Florida	191.45
		W	Kentucky	188.05

		W	George Washington	187.95
3/20	188.45	L	at Arizona	195.05
3/28	188.65	5th	SEC Championship (Baton Rouge, La.)	
		L	Georgia	196.40
		L	Alabama	194.50
		L	Auburn	191.35
		L	Florida	189.60
		W	Kentucky	185.95
4/11	184.85	7th	NCAA Central Regional Championships (Columbia, Mo.)	
		L	Alabama	193.125
		L	Michigan	189.775
		L	Auburn	188.525
		L	Missouri	188.325
		L	Iowa	187.350
		L	Southeast Missouri State	185.525

1993

17-16-1 OVERALL, 9-7-1 POSTSEASON

DATE	LSU SCORE	W/L	OPPONENT	OPP. SCORE
1/15	188.10	L	at Penn State	190.60
		W	Michigan State	186.55
1/22	187.35	W	at Centenary	184.20
1/29	190.80	L	Georgia	194.90
2/5	192.25	W	Washington	190.30
2/12	192.50	L	at Alabama	196.10
2/19	192.10	L	Florida	192.30
2/27	192.50	L	at Auburn	193.75
3/5	193.80	L	at Kentucky	194.30
3/14	191.95	W	George Washington	188.75
		W	Rhode Island	188.05
		W	Missouri	186.60
3/20	192.90	4th	SEC Championship (Tuscaloosa, Ala.)	
		L	Georgia	197.05
		L	Alabama	196.05
		L	Auburn	193.20
		W	Florida	192.10
		W	Kentucky	189.35
4/3	194.70	2nd	NCAA Central Regional Championships (Baton Rouge, La.)	
		L	Alabama	196.075
		W	Auburn	194.200
		W	Michigan	193.000
		W	Michigan State	192.175
		W	Missouri	189.825
		W	SE Missouri St.	189.000
4/15	193.425	17th	NCAA Championships (Corvallis, Ore.)	
		L	Georgia (196.400)	198.000
		L	Alabama (195.275)	196.825
		L	Utah (196.325)*	195.825
		L	UCLA (194.125)	194.925
		L	Arizona (194.025)*	194.075
		L	Auburn (193.775)*	193.725
		T	Oregon State	193.425
		W	Michigan	193.125
		W	Florida	193.950
		W	Penn State*	192.700
		W	Arizona State*	192.175

1994

19-9-1 OVERALL, 6-5 POSTSEASON

DATE	LSU SCORE	W/L	OPPONENT	OPP. SCORE
1/16	190.10		Shakespeare's Festival (Columbia, Mo.)	
		W	Missouri	185.750
		W	Iowa	185.450
		W	Ball State	181.650
		W	Northern Illinois	181.000
1/21	190.70	W	Auburn	189.900
1/28	191.975	L	at Georgia	195.350
2/4	191.200	W	at Florida	191.125
		W	Centenary	180.250
2/11	192.250	W	at Kentucky	191.425
2/18	194.925	T	Alabama	194.925
2/25	194.325	W	North Carolina State	189.350
3/4	195.325	W	Kentucky	190.500
3/18	195.550	L	at Alabama	196.250
3/26	194.150	3rd	SEC Championship (Auburn, Ala.)	
		L	Georgia	196.700
		L	Alabama	195.175
		W	Florida	194.125
		W	Auburn	192.700
		W	Kentucky	189.750
4/9	194.400	2nd	NCAA Central Regional Championships (Tuscaloosa, Ala.)	
		L	Alabama	196.900
		W	Michigan	193.600
		W	Auburn	191.475
		W	Minnesota	187.300
		W	Missouri	185.075
		W	Iowa State	184.225
4/21	193.225	8th	NCAA Championships (Salt Lake City, Utah)	
		L	Utah (194.925)*	196.400
		L	Alabama (196.300)*	196.350
		L	Georgia (195.050)	195.850
		L	Michigan (193.475)	195.150
		L	UCLA (193.700)	194.975
		L	Florida (194.250)*	194.850
		L	Oregon State*	193.625
		W	Brigham Young	192.325
		W	Arizona State*	190.825
		W	Washington	190.525
		W	New Hampshire	188.450

1995

20-9 OVERALL, 6-5 POSTSEASON

DATE	LSU SCORE	W/L	OPPONENT	OPP. SCORE
1/15	192.025		Shakespeare's Invitational (Columbia, Mo.)	
		W	Illinois-Chicago	187.825
		W	Illinois State	186.800
		W	Missouri	185.875
1/21	193.950	W	at Auburn	189.525
1/27	194.300	W	Centenary	182.125
2/3	195.550	L	at Alabama	196.700
2/10	194.800	W	at Kentucky	192.475
2/17	196.175	L	Georgia	197.050
2/24	195.475	W	Arizona	194.075
3/3	195.550	L	Florida	195.650
3/12	196.400	W	Oklahoma	193.000
		W	West Virginia	191.750
		W	Centenary	187.700
3/25	196.125	2nd	SEC Championship (Gainesville, Fla.)	
		L	Alabama	196.175
		W	Georgia	195.875
		W	Florida	195.650
		W	Kentucky	191.975
		W	Auburn	190.675
4/7	195.075	3rd	NCAA Central Regional Championships (Ann Arbor, Mich.)	
		L	Alabama	196.675
		L	Michigan	195.725
		W	Illinois State	189.875
		W	Illinois-Chicago	189.600
		W	Northern Illinois	189.450
		W	Southeast Missouri State	188.900
4/19	193.025	9th	NCAA Championships (Athens, Ga.)	
		L	Utah (195.325)*	196.650
		L	Alabama (195.600)	196.425
		L	Michigan (195.700)*	196.425
		L	UCLA (196.375)	196.150
		L	Georgia (196.825)*	196.075
		L	Oregon St. (195.500)	194.850
		L	Florida	195.425
		L	Penn State	194.150
		W	Brigham Young	191.975
		W	Nebraska*	191.750
		W	West Virginia*	189.650

1996

13-13 OVERALL, 4-2 POSTSEASON

DATE	LSU SCORE	W/L	OPPONENT	OPP. SCORE
1/20	189.025		Sunshine Fest Invitational (Nassau, Bahamas)	
		L	Georgia	195.400
		W	West Virginia	188.600
		W	Kentucky	188.525
1/27	161.925	L	at Georgia	195.875
2/2	192.725	L	Kentucky	193.075
2/9	193.250	L	at Florida	194.850
2/23	193.275	L	Alabama	196.500
3/1	193.250	W	Auburn	193.150
3/8	192.275		Invite '96 (Tucson, Ariz.)	
		L	Arizona	195.300
		L	Illinois-Chicago	192.800
		W	New Hampshire	189.675
		W	Southeast Missouri State	188.725
3/15	195.550	W	New Hampshire	191.325
		W	Missouri	190.875
		W	Centenary	188.650
3/29	193.325	5th	SEC Championship (Lexington, Ky.)	
		L	Georgia	197.450
		L	Alabama	195.950
		L	Florida	195.650
		L	Kentucky	195.250
		W	Auburn	191.150
4/13	194.525	3rd	NCAA Central Regional Championships (Baton Rouge, La.)	
		L	Alabama	198.075
		L	Michigan	196.275
		W	Michigan State	193.850
		W	Auburn	193.100
		W	Minnesota	192.625
		W	Iowa State	190.350

YEAR-BY-YEAR RESULTS

1997*

16-13-1 OVERALL, 4-7 POSTSEASON

RANKING	DATE	LSU SCORE	W/L	OPPONENT	OPP. SCORE
NO POLL	1/12	191.075	L	at Oklahoma	191.225
#14	1/17	193.900	W	#21 Michigan State	193.050
#8	1/24	196.425	T	#1 Georgia	196.425
#8	2/1	192.725	L	at #5 UCLA	195.150
			W	#25 Cal	190.800
			W	UC Santa Barbara	186.725
#11	2/7	195.000	L	#10 Florida	195.475
#11	2/14	195.300	W	Centenary	182.625
#10	2/21	195.650	L	at #2 Alabama	197.325
#9	3/1	196.350	1st	Tiger Invitational (Auburn, Ala.)	
			W	#6 West Virginia	193.775
			W	Auburn	191.875
			W	Michigan State	191.625
#7	3/7	197.150	W	Illinois-Chicago	194.075
#6	3/15	196.400	W	at #22 Kentucky	194.800
#5	3/22	196.025	3rd	SEC Championship (Athens, Ga.)	
			L	#1 Georgia	198.375
			L	#10 Florida	196.050
			W	#4 Alabama	195.775
			W	Kentucky	195.075
			W	Auburn	192.550
#5	4/5	196.175	3rd	NCAA Central Regional Championships (Ann Arbor, Mich.)	
			L	#2 Michigan	197.700
			L	#4 Alabama	196.250
			W	#21 Minnesota	195.125
			W	#23 Michigan State	194.700
			W	#17 Iowa State	194.475
			W	#16 SE Missouri State	193.450
#4	4/17	193.825	12th	NCAA Championships (Gainesville, Fla.)	
			L	#2 UCLA (196.425)*	197.150
			L	#9 Arizona St. (196.275)	196.850
			L	#6 Georgia (197.075)*	196.600
			L	#1 Michigan (196.200)	196.500
			L	#5 Florida (196.075)	196.425
			L	#10 Nebraska (196.025)*	195.250
			L	#8 Utah*	196.025
			L	#7 Washington	195.975
			L	#3 Alabama	195.600
			L	#11 Minnesota	194.775
			L	#12 Penn State*	194.300

1998

20-13 OVERALL, 5-6 POSTSEASON

RANKING	DATE	LSU SCORE	W/L	OPPONENT	OPP. SCORE
#10	1/10	189.000	2nd	MSU Invitational (East Lansing, Mich.)	
			L	#16 Michigan State	189.475
			W	Iowa State	188.875
			W	Ball State	185.350
			W	Illinois State	184.475
#12	1/18	189.050	2nd	Shakespeare's Festival (Columbia, Mo.)	
			L	#10 Michigan State	190.950
			W	#17 Missouri	187.675
			W	#22 Illinois State	185.875
			W	#23 Western Michigan	182.850
NR	1/23	194.975	W	#5 Kentucky	192.775
#18	1/30	194.825	W	#25 Auburn	191.300
#15	2/6	194.150	L	at #1 Georgia	196.600
			W	Denver	190.250
#13	2/13	195.500	W	Centenary	177.325
#14	2/27	194.025	L	at #4 Florida	196.625
#8	3/6	195.475	L	#2 Alabama	195.975
			W	#11 Penn State	194.175
#6	3/14	195.450	W	Missouri	193.300
#8	3/21	196.450	3rd	SEC Championship (Baton Rouge, La.)	
			L	#1 Georgia	197.600
			L	#5 Florida	196.725
			W	#3 Alabama	195.400
			W	#24 Kentucky	193.525
			W	Auburn	192.425
#8	4/4	195.250	3rd	NCAA Central Regional Championships (Tuscaloosa, Ala.)	
			L	#4 Alabama	196.550
			L	#2 Michigan	196.000
			W	#11 Iowa State	193.400
			W	#19 Minnesota	192.800
			W	#21 Illinois	191.575
			W	#14 Michigan State	190.000
#8	4/16	195.300	9th	NCAA Championships (Los Angeles, Calif.)	
			L	#1 Georgia (197.825)	197.725
			L	#2 Florida (196.750)*	196.350
			L	#3 Alabama (196.475)	196.300
			L	#6 Utah (196.200)*	196.025
			L	#10 UCLA (196.925)*	195.750
			L	#11 Arizona St. (195.450)	195.450
			L	#4 Washington*	195.450
			L	#5 Michigan	195.425
			W	#12 Penn State*	194.625
			W	#9 North Carolina State	194.125
			W	#7 BYU	193.400

1999

17-10 OVERALL, 6-4 POSTSEASON

RANKING	DATE	LSU SCORE	W/L	OPPONENT	OPP. SCORE
#9	1/15	194.150	W	at Auburn	191.750
#5	1/22	194.400	W	at Kentucky	192.625
#4	1/29	195.825	L	#2 Georgia	196.100

#4	2/12	196.275	W	Texas Woman's	185.475
			W	Centenary	184.000
#3	2/19	195.150	L	at #4 Utah	196.375
#4	2/26	196.950	W	#18 Florida	194.975
#5	3/6	196.475	L	at #2 Alabama	197.825
#4	3/12	196.050	W	#20 Illinois-Chicago	195.075
			W	#21 Illinois	194.350
			W	Michigan State	190.900
#4	3/19	194.500	W	Southeast Missouri State	192.425
#5	3/27	195.325	4th	SEC Championship (Tuscaloosa, Ala.)	
			L	#1 Georgia	197.475
			L	#2 Alabama	196.775
			L	#11 Florida	195.875
			W	#21 Kentucky	194.875
			W	Auburn	194.000
#5	4/10	194.600	2nd	NCAA Region IV Championships (Baton Rouge, La.)	
			L	#8 Stanford	194.675
			W	Central Michigan	193.350
			W	Ball State	193.375
			W	Auburn	193.300
			W	#21 Kentucky	191.825
#12	4/22	194.475	9th	NCAA Championships (Salt Lake City, Utah)	
			L	#1 Georgia (197.025)	196.850
			L	#3 Michigan (196.575)	196.550
			L	#4 Alabama (194.950)*	194.950
			L	#10 Ariz. St. (194.525)*	194.525
			L	#2 UCLA (196.425)*	195.850
			L	#6 Nebraska (196.225)	194.800
			L	#5 Utah	195.475
			L	#6 Penn State	194.775
			W	#11 Stanford*	194.000
			W	#9 Florida	194.000
			W	#8 West Virginia*	191.850

2000

21-8-1 OVERALL, 6-4 POSTSEASON

RANKING	DATE	LSU SCORE	W/L	OPPONENT	OPP. SCORE
#10	1/8	192.600	1st	MSU Invitational (East Lansing, Mich.)	
			W	#12 Oregon State	191.100
			W	#20 Ohio State	190.650
			W	Michigan State	190.625
#13	1/14	194.625	W	Kentucky	192.250
#10	1/23	196.225	L	at #5 Georgia	196.375
#6	1/28	195.125	W	#1 Utah	194.800
#7	2/4	196.325	W	#1 Alabama	196.250
#6	2/12	195.775	2nd	at TWU Quad Meet	
			L	#20 Oklahoma	195.800
			W	Texas Woman's	193.275
			W	Illinois-Chicago	192.400
#6	2/18	196.800	W	Centenary	189.100
#6	2/25	195.075	L	at #19 Florida	195.400
			W	#11 Iowa State	194.400
			W	#12 North Carolina State	194.250
#7	3/3	196.950	W	Auburn	194.375
#7	3/18	196.825	t2nd	SEC Championship (Gainesville, Fla.)	
			L	#4 Alabama	197.200
			T	#2 Georgia	196.825
			W	#16 Florida	195.775
			W	Kentucky	194.650
			W	Auburn	192.500
#7	4/1	195.650	2nd	NCAA Region III Championships (Tucson, Ariz.)	
			L	#5 Nebraska	196.875
			W	#18 Arizona State	195.500
			W	Arizona	194.100
			W	Illinois-Chicago	193.650
			W	Missouri	190.975
#10	4/13	194.950	9th	NCAA Championships (Boise, Idaho)	
			L	#2 UCLA (197.250)	197.300
			L	#6 Utah (196.125)*	196.875
			L	#4 Georgia (196.775)*	196.800
			L	#3 Nebraska (196.000)	196.725
			L	#1 Alabama (196.075)*	196.500
			L	#5 Michigan (195.925)	195.725
			L	#9 Penn State	195.350
			L	#8 Iowa State	195.325
			W	#7 Oregon State*	194.750
			W	#12 BYU*	194.500
			W	#11 West Virginia	194.175

2001

14-7 OVERALL, 3-2 POSTSEASON

RANKING	DATE	LSU SCORE	W/L	OPPONENT	OPP. SCORE
#8	1/12	194.000	W	at Kentucky	193.000
#14	1/19	193.875	L	#3 Georgia	196.100
#23	1/26	195.450	W	#21 Denver	194.275
#11	2/2	194.700	L	at #2 Alabama	197.350
#12	2/9	195.850	W	Towson State	193.850
			W	Texas Woman's	190.625
			W	Centenary	187.275
#13	2/16	196.475	W	#7 Florida	195.625
NR (RQS)	3/2	195.675	W	at Auburn	194.450
#18	3/9	196.950	W	#23 Michigan State	194.125
			W	New Hampshire	194.125
#21	3/23	196.300	4th	SEC Championship (Birmingham, Ala.)	
			L	#2 Georgia	198.000
			L	#3 Alabama	197.475
			L	#11 Florida	196.375
			W	Kentucky	195.850
			W	Auburn	194.500

#18	4/7	196.300	3rd	NCAA Northeast Regional Champs. (Ann Arbor, Mich.)	
			L	#7 Michigan	197.225
			L	#6 Stanford	196.725
			W	New Hampshire	194.225
			W	Rhode Island	189.075
			W	Massachusetts	188.525

2002

16-14 OVERALL, 6-4 POSTSEASON

RANKING	DATE	LSU SCORE	W/L	OPPONENT	OPP. SCORE
#11	1/11	193.825	5th	Super Six Challenge (Gainesville, Fla.)	
			L	#2 Georgia	196.525
			L	#4 Alabama	195.725
			L	#1 UCLA	195.650
			L	#7 Florida	194.600
			W	#12 Penn State	193.375
#15	1/18	196.200	W	#22 Auburn	194.775
#5	1/25	194.750	L	at #16 Florida	194.950
#10	2/1	196.125	W	#1 Utah	196.100
#10	2/8	196.925	W	#4 Alabama	196.575
#8	2/16	195.825	L	at #15 Denver	196.050
#8	2/22	196.725	W	#21 Iowa	194.825
#10	3/1	197.500	W	#18 Kentucky	194.750
#11	3/8	196.675	L	at #1 Georgia	197.450
#9	3/15	197.675	W	Rhode Island	191.700
			W	Centenary	189.450
#9	3/23	196.225	4th	SEC Championship (Birmingham, Ala.)	
			L	#3 Georgia	197.025
			L	#2 Alabama	196.925
			L	#18 Florida	196.425
			W	#19 Kentucky	194.325
			W	Auburn	194.325
#6	4/6	196.450	1st	NCAA Central Regional Champs. (Baton Rouge, La.)	
			W	#15 Florida	195.900
			W	#7 Iowa State	195.400
			W	#25 Central Michigan	193.675
			W	New Hampshire	193.075
			W	Illinois State	189.975
#5	4/18	195.850	8th	NCAA Championships (Tuscaloosa, Ala.)	
			L	#1 Alabama (197.300)	197.575
			L	#4 Georgia (196.650)*	197.250
			L	#2 UCLA (197.100)	197.150
			L	#3 Utah (196.775)*	196.950
			L	#7 Nebraska (196.575)*	196.425
			L	#9 Stanford (196.050)	196.025
			L	#8 Michigan*	196.175
			W	#10 Minnesota	195.700
			W	#11 Florida	195.675
			W	#12 Arizona*	194.975
			W	#6 Oregon State	192.925

2003

18-15 OVERALL, 5-5 POSTSEASON

YEAR-BY-YEAR RESULTS

2004

22-9 OVERALL, 7-3 POSTSEASON

RANKING	DATE	LSU SCORE	W/L	OPPONENT	OPP. SCORE
#10	1/9	194.875	2nd	MSU Invitational (East Lansing, Mich.)	
			L	#17 Arizona	195.425
			W	Michigan State	193.250
			W	Western Michigan	192.125
#16	1/16	195.300	L	at #8 Florida	197.100
#20	1/23	196.750	L	#2 Alabama	197.600
#14	1/30	196.500	W	Centenary	190.100
			W	Texas Woman's	188.275
#14	2/6	196.775	W	at #13 Arkansas	196.450
#13	2/13	197.300	L	at #3 Georgia	198.050
#10	2/20	197.375	W	Kentucky	194.875
#10	2/22	197.100	W	#15 Arizona	197.050
			W	at Texas Woman's	193.475
#10	2/27	197.525	W	#18 Auburn	195.600
#4	3/5	197.525	W	Ohio State	195.600
#6	3/12	197.650	W	at Centenary	194.725
#5	3/20	197.275	3rd	SEC Championship (Duluth, Ga.)	
			L	#4 Georgia	198.175
			L	#3 Alabama	197.950
			W	#8 Florida	197.225
			W	#20 Auburn	195.925
			W	#24 Arkansas	194.825
			W	Kentucky	193.850
#7	4/2	197.500	1st	NCAA Central Regional Championships (Baton Rouge, La.)	
			W	#17 Arizona State	196.500
			W	#6 BYU	196.175
			W	#23 Auburn	195.750
			W	Michigan State	195.025
			W	#24 Kent State	194.850
#3	4/15	196.650	7th	NCAA Championships (Los Angeles, Calif.)	
			L	#4 UCLA (197.675)*	198.125
			L	#2 Georgia (196.775)	197.200
			L	#7 Alabama (197.325)*	197.125
			L	#8 Stanford (196.850)	197.125
			L	#6 Florida (196.850)	196.800
			L	#1 Utah (196.925)*	195.775
			W	#10 Michigan*	196.500
			W	#9 Arizona State*	196.325
			W	#10 Nebraska	196.150
			W	#5 Oklahoma	195.750
			W	#12 Iowa	194.775

2005

26-7 OVERALL, 7-3 POSTSEASON

RANKING	DATE	LSU SCORE	W/L	OPPONENT	OPP. SCORE
#8	1/7	193.725	3rd	MSU Invitational (East Lansing, Mich.)	
			L	Michigan State	195.475
			L	#20 Denver	193.875
			W	Ball State	190.025
#20	1/14	195.625	W	#12 Florida	195.550
#8	1/21	197.050	L	at #4 Alabama	197.175
#7	1/28	197.250	W	#15 Michigan State	191.425
#4	2/4	196.925	W	#13 Arkansas	195.725
#3	2/11	196.375	W	#7 Georgia	195.525
#3	2/18	196.925	W	at #20 Kentucky	195.550
#3	2/20	195.600	W	at #22 Ohio State	194.075
#1	2/25	196.025	W	at #20 Auburn	195.025
#2	3/4	196.175	W	Illinois-Chicago	192.950
			W	New Hampshire	192.375
			W	Western Michigan	189.975
#4	3/11	197.850	W	at #9 Oklahoma	195.750
#4	3/13	196.800	W	at Texas Woman's	191.425
#1	3/18	196.900	W	Centenary	190.375
#2	3/26	196.975	2nd	SEC Championship (Duluth, Ga.)	
			L	#8 Georgia	197.250
			W	#5 Alabama	196.700
			W	#6 Florida	196.150
			W	#15 Arkansas	195.325
			W	#21 Auburn	195.125
			W	#19 Kentucky	193.800
#3	4/9	197.125	1st	NCAA Northeast Regional Champs. (Durham, N.H.)	
			W	#10 Oklahoma	195.550
			W	New Hampshire	194.700
			W	#15 Arkansas	193.950
			W	Pittsburgh	193.100
			W	Rutgers	191.350
#1	4/21	195.800	9th	NCAA Championships (Auburn, Ala.)	
			L	#8 Georgia (197.350)	197.825
			L	#4 Alabama (197.000)	197.400
			L	#2 Utah (196.850)*	197.275
			L	#3 UCLA (197.025)	197.150
			L	#6 Michigan (196.575)*	196.575
			L	#7 Nebraska (195.875)*	196.425
			L	#5 Florida	196.225
			L	#9 Iowa State	195.975
			W	#12 Penn State*	194.975
			W	#11 BYU	194.625
			W	#10 Oklahoma*	194.425

2006

19-16 OVERALL, 5-5 POSTSEASON

RANKING	DATE	LSU SCORE	W/L	OPPONENT	OPP. SCORE
#7	1/6	193.900	4th	Super Six Challenge (Baton Rouge, La.)	
			L	#4 Alabama	194.250

			L	#8 Nebraska	194.100
			L	#11 Iowa State	194.050
			W	#15 Auburn	193.675
			W	#16 Missouri	192.700
#8	1/15	194.050	1st	at TVU Quad Meet	
			W	Utah State	192.875
			W	Texas Woman's	190.475
			W	Centenary	188.125
#11	1/20	195.025	W	Iowa	191.100
#11	1/27	194.725	W	at #22 Arkansas	193.100
#14	2/4	196.100	L	at #1 Georgia	197.150
#13	2/10	195.875	W	#18 Kentucky	194.675
#13	2/17	196.550	L	#17 Auburn	196.700
#11	2/24	196.575	L	#5 Oklahoma	196.950
#11	2/26	196.525	W	at Centenary	190.425
#7	3/3	195.850	L	#4 Alabama	196.425
#7	3/10	195.275	L	at #2 Florida	196.150
			W	#16 Penn State	193.200
#8	3/17	196.825	W	#10 UCLA	195.975
#8	3/25	195.900	4th	SEC Championship (Birmingham, Ala.)	
			L	#1 Georgia	197.275
			L	#5 Alabama	196.975
			L	#3 Florida	196.275
			W	#14 Auburn	194.975
			W	#19 Arkansas	194.650
			W	#18 Kentucky	191.150
#7	4/7	195.825	2nd	NCAA Central Regional Championships (Baton Rouge, La.)	
			L	#6 Oklahoma	196.375
			W	#16 Penn State	194.900
			W	#20 Kentucky	194.075
			W	Michigan State	193.575
			W	Ohio State	193.000
#8	4/20	195.650	8th	NCAA Championships (Corvallis, Ore.)	
			L	#1 Georgia (197.275)	197.750
			L	#11 Utah (196.175)*	196.800
			L	#3 Alabama (196.250)*	196.725
			L	#4 Florida (196.225)	196.275
			L	#6 Nebraska (196.325)*	196.175
			L	#10 Iowa State (196.250)*	194.725
			L	#7 Michigan*	196.000
			W	#2 Arizona State	195.575
			W	#4 Oklahoma*	195.525
			W	#9 Oregon State	195.150
			W	#12 Arkansas	194.375

2007

19-13 OVERALL, 6-4 POSTSEASON

RANKING	DATE	LSU SCORE	W/L	OPPONENT	OPP. SCORE
#9	1/5	194.075	W	Super Six Challenge (Fayetteville, Ark.)	
			L	#3 Florida	196.550
			L	#7 Nebraska	195.200
			L	#14 Penn State	194.575
			W	#17 Denver	192.975
			W	#15 Arkansas	192.800
#9	1/12	194.875	W	at Iowa	192.525
#14	1/19	193.850	W	Illinois	193.300
#15	1/26	196.500	W	#14 Arkansas	195.575
#13	2/2	196.450	L	#2 Georgia	197.425
#12	2/9	195.575	W	at #24 Kentucky	194.325
#12	2/16	195.750	W	at #11 Auburn	194.775
#9	2/23	197.050	L	#1 Florida	197.200
#8	3/2	196.875	L	at #4 Alabama	197.250
#6	3/9	197.175	W	#17 Penn State	196.275
#8	3/16	197.025	W	#5 Nebraska	143.750
#6	3/23	196.800	W	at Centenary	191.400
#4	3/31	196.250	4th	SEC Championship (North Little Rock, Ark.)	
			L	#1 Florida	197.325
			L	#2 Georgia	197.175
			L	#3 Alabama	197.000
			W	#11 Arkansas	194.550
			W	#17 Auburn	194.475
			W	Kentucky	194.000
#5	4/14	195.950	2nd	NCAA Southeast Regional Champs. (Morgantown, W. Va.)	
			L	#8 UCLA	195.975
			W	#24 West Virginia	194.775
			W	#17 Auburn	193.950
			W	#22 N.C. State	193.950
			W	North Carolina	193.875
#10	4/26	196.275	7th	NCAA Championships (Salt Lake City, Utah)	
			L	#3 Georgia (197.700)	197.850
			L	#1 Utah (197.325)*	197.250
			L	#1 Florida (197.400)	197.225
			L	#9 UCLA (196.475)*	196.925
			L	#6 Stanford (197.200)*	196.825
			L	#5 Nebraska (196.625)	196.625
			W	#11 Oklahoma	196.250
			W	#4 Alabama	196.125
			W	#12 Denver*	195.575
			W	#8 Michigan*	195.100
			W	#7 Oregon State	195.100

2008

26-12 OVERALL, 9-6 POSTSEASON

RANKING	DATE	LSU SCORE	W/L	OPPONENT	OPP. SCORE
#10	1/4	195.725	1st	Cancun Classic (Cancun, Mexico)	
			W	#15 Denver	193.200
			W	Minnesota	192.725
			W	Texas Woman's	190.900

#10	1/11	195.550	W	Iowa	191.525
#7	1/18	195.900	W	at #8 Arkansas	195.300
#5	1/26	195.325	L	at #2 Georgia	197.550
#7	2/1	195.075	W	Kentucky	191.200
#7	2/8	197.050	W	#15 Auburn	195.475
			W	West Virginia	192.750
#6	2/15	196.325	L	at #3 Florida	197.925
#5	2/22	196.125	L	Alabama	196.300
#8	2/29	197.775	W	#19 Michigan State	196.200
#8	3/2	197.050	W	at Centenary	193.125
#5	3/7	196.550	W	Washington	195.175
#5	3/14	196.500	W	at #18 N.C. State	194.850
			W	North Carolina	193.500
			W	George Washington	192.550
#5	3/29	196.500	4th	SEC Championship (Duluth, Ga.)	
			L	#1 Georgia	197.350
			L	#3 Florida	197.325
			L	#6 Alabama	197.325
			W	#13 Auburn	196.100
			W	#11 Arkansas	194.650
			W	#20 Kentucky	194.025
#7	4/12	197.625	1st	NCAA Central Regional Championships (Baton Rouge, La.)	
			W	#6 Stanford	197.525
			W	Ohio State	195.125
			W	#18 Missouri	195.100
			W	#20 Kentucky	194.950
			W	Kent State	193.700
#3	4/24-25 (196.575)	196.350	5th	NCAA Championships (Athens, Ga.)	
			L	#1 Georgia (197.625)	197.450
			L	#5 Utah (196.950)	197.125
			L	#4 Stanford (196.900)	196.750
			L	#2 Florida (196.900)*	196.700
			W	#6 Alabama (196.650)*	196.125
			W	#9 UCLA	196.725
			W	#8 Michigan	196.075
			W	#10 Oklahoma*	196.075
			W	#11 Arkansas*	195.825
			W	#7 Oregon State*	195.475
			W	#12 Denver	194.200

2009

24-12 OVERALL, 8-7 POSTSEASON

RANKING	DATE	LSU SCORE	W/L	OPPONENT	OPP. SCORE
#7	1/2	194.900	1st	Cancun Classic (Cancun, Mexico)	
			W	#19 Boise State	193.700
			W	#8 Michigan	192.700
			W	North Carolina	190.325
#7	1/9	194.175	W	Southeast Missouri St.	191.675
			W	at Iowa	191.375
#14	1/16	195.950	L	#2 Georgia	196.850
#11	1/23	196.575	W	at Kentucky	195.225
#10	1/30	195.300	L	at #6 Auburn	

YEAR-BY-YEAR RESULTS

2010

15-13-1 OVERALL, 7-9 POSTSEASON

RANKING	DATE	LSU SCORE	W/L	OPPONENT	OPP. SCORE
#6	1/8	194.375	W	Maryland	190.625
#16	1/15	195.350	3rd	Lady Luck Invitational (Las Vegas, Nev.)	
			L	#15 Missouri	195.625
			L	#14 Kentucky	195.525
			W	Arizona State	192.675
#16	1/22	195.650	W	#11 Auburn	193.900
#13	1/29	195.050	L	at #4 Florida	196.725
#12	2/5	196.475	W	#1 Alabama	196.050
#11	2/12	196.475	W	Texas Woman's	190.775
#11	2/19	196.200	T	at #6 Arkansas	196.200
#10	2/26	196.050	L	at #5 Georgia	196.575
#10	3/5	196.925	W	#6 Oregon State	195.525
#10	3/12	197.150	W	Iowa	195.400
#11	3/19	196.425	W	at Centenary	186.700
#10	3/27	195.750	4th	SEC Championship (Jacksonville, Fla.)	
			L	#4 Florida	197.050
			L	#1 Alabama	196.875
			L	#5 Georgia	196.825
			W	#15 Auburn	195.575
			W	#8 Arkansas	195.275
			W	#18 Kentucky	194.800
#11	4/10	196.400	2nd	NCAA Northeast Regional Champs. (University Park, Pa.)	
			L	#2 Oklahoma	197.250
			W	#14 Penn State	196.050
			W	New Hampshire	194.800
			W	Ohio State	193.875
			W	Maryland	193.750
#9	4/22	196.025	9th	NCAA Championships (Gainesville, Fla.)	
			L	#1 UCLA (196.875)*	197.725
			L	#4 Oklahoma (196.550)*	197.250
			L	#3 Alabama (196.850)	197.225
			L	#6 Stanford (196.300)	197.100
			L	#2 Florida (196.775)	197.000
			L	#5 Utah (196.625)*	196.225
			L	#12 Nebraska*	196.175
			L	#8 Oregon State*	196.050
			W	#11 Michigan	195.700
			W	#7 Arkansas	195.600
			W	#10 Missouri	194.600

W #10 Arkansas 194.175
W #15 Auburn 194.100

From 1993 on, NCAA Championship scores listed in parentheses reflect preliminary round scores for teams advancing to the Super Six finals.

* - Signifies opponent in NCAA Championship Semifinal
^ - All rankings from 1997 on based on GymInfo Rankings

2011

8-15 OVERALL, 3-2 POSTSEASON

RANKING	DATE	LSU SCORE	W/L	OPPONENT	OPP. SCORE
#12	1/7	193.350	L	at #8 Oregon State	195.400
#25	1/14	194.475	L	at Auburn	194.775
#24	1/21	194.000	L	#1 Florida	196.425
#25	1/29	195.550	3rd	at Metroplex Challenge (Fort Worth, Texas)	
			L	#6 Alabama	196.825
			L	#10 Nebraska	195.600
			W	Missouri	193.400
#24	2/4	195.875	W	BYU	193.750
#19	2/11	194.875	L	#11 Arkansas	195.325
#21	2/18	196.350	L	#5 Georgia	196.500
#20	2/25	192.950	L	at Kentucky	195.575
#24	3/4	196.000	W	New Hampshire	194.350
#22	3/11	194.750	L	at #2 Alabama	196.950
#19	3/19	195.475	5th	SEC Championship (Birmingham, Ala.)	
			L	#2 Alabama	197.225
			L	#1 Florida	196.975
			L	#8 Georgia	196.625
			L	#12 Arkansas	195.800
			W	#22 Auburn	195.325
			W	Kentucky	193.950
#18	4/2	195.350	3rd	NCAA Athens Regional Championships (Athens, Ga.)	
			L	#6 UCLA	197.425
			L	#8 Georgia	196.750
			W	North Carolina State	194.750
			W	Maryland	193.200
			W	West Virginia	192.500

2012

10-11 OVERALL, 0-0 POSTSEASON

RANKING	DATE	LSU SCORE	W/L	OPPONENT	OPP. SCORE
#12	1/6	192.500	5th	at Cancun Classic (Cancun, Mexico)	
			L	#11 Arkansas	196.450
			L	#19 Arizona	195.150
			L	#17 Auburn	194.775
			L	#25 Iowa	193.875
#12	1/13	195.025	W	#17 Auburn	193.800
#25	1/20	196.325	L	at #3 Arkansas	197.225
#17	1/28	195.750	L	at #7 Georgia	197.250
#14	2/3	196.125	W	Kentucky	195.050
#14	2/10	196.850	L	at #4 Florida	197.850
#13	2/17	196.450	W	at #23 Washington	194.975
			W	Seattle Pacific	190.800
#13	2/24	196.575	L	#3 Alabama	197.025
#10	3/2	196.550	W	#20 North Carolina State	194.875
#9	3/9	196.300	W	at Iowa	195.700
#10	3/16	196.850	W	West Virginia	194.900
#8	3/24	196.425	4th	SEC Championship (Duluth, Ga.)	
			L	#1 Florida	197.150
			L	#3 Alabama	196.775
			L	#5 Georgia	196.575
			W	#24 Kentucky	194.350